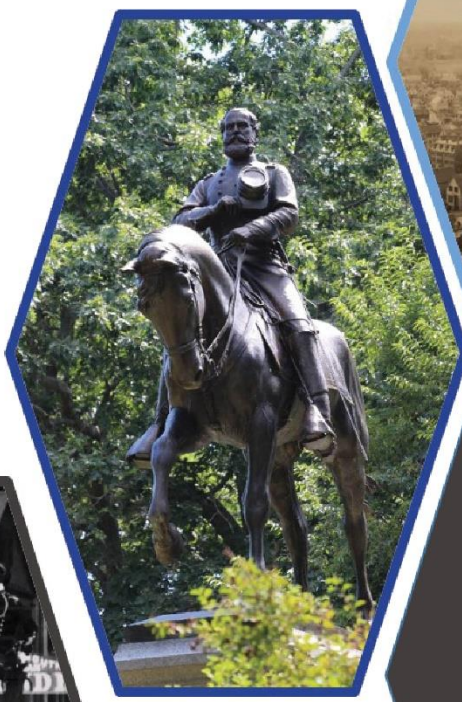


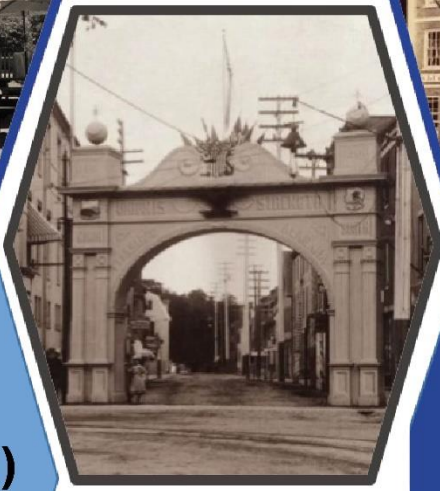


PORTSMOUTH NH P400

HISTORY LIGHTS OUR WAY
1623 - 2023



FY 2023



Fiscal Year 2023
(July 1, 2022 - June 30, 2023)
**Popular Annual
Financial Report (PAFR)**
City of Portsmouth, New Hampshire

Table of Contents

	Page #
Letter from the City Manager...	1
Elected Officials.....	2
Organizational Chart.....	3
Awards and Accolades	4
Engage in Your City Government.....	5
Portsmouth at a Glance.....	6
Demographics.....	7
Economic Indicators.....	8
Property Tax Rate.....	9
Property Tax Levy, Assessments, and Equalization.....	10
Property Tax Timeline & Tax Relief	11
FY23 Spotlight – Community Campus.....	12
City Dept. Services & Highlights ...	
Charter Departments (Police, Fire, & School)	13
Community Services.....	14
Public Works Department.....	15
FY23 Financial Highlights	
Letter from the Director of Finance and Administration	16
Glossary of Financial Terms.....	17
Net Position.....	18
General Fund Revenues.....	20
General Fund Expenditures.....	21
Fund Balance.....	22
Capital Assets & Long-Term Debt.....	23
Water & Sewer Funds.....	24
FY24 Budget.....	26
Did you know.....	27
Stay Connected.....	28
Contact Us.....	29

Popular Annual Financial Report

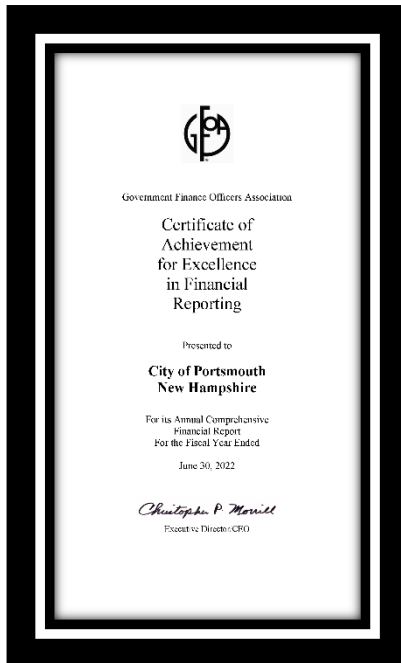
City of Portsmouth, New Hampshire



For the fiscal year ended June 30, 2023

Prepared by:
City of Portsmouth, Finance Department
Director of Finance and Administration, Judie Belanger

Award for Outstanding Achievement in Popular Annual Financial Reporting



The [Government Finance Officers Association of the United States and Canada \(GFOA\)](#) has given an Award for Outstanding Achievement in Popular Annual Financial Reporting to the City of Portsmouth, NH for the Fiscal Year ended June 30, 2022. The Award for Outstanding Achievement in Popular Annual Financial Reporting is a prestigious national award recognizing conformance with the highest standards for preparation of the state and local government popular reports.

In order to receive an Award for Outstanding Achievement in Popular Annual Financial Reporting, a government unit must publish a Popular Annual Financial Report, whose contents conform to program standards of creativity, presentation, understandability, and reader appeal.

An Award for Outstanding Achievement in Popular Annual Financial Reporting is valid for a period of one year only. This is the City of Portsmouth's 6th PAFR Award. We believe our current report continues to conform to the Popular Annual Financial Reporting requirements, and we are submitting it to GFOA to determine its eligibility for another Award.

A Letter from the City Manager



To the Citizens of Portsmouth,

I am pleased to present the Popular Annual Financial Report (PAFR) for the year ended June 30, 2023. This report, prepared for the non-financial reader, includes valuable information on the City's financial well-being.

It highlights various programs and accolades which affirm why Portsmouth is a great place to live, play, work and visit. This PAFR represents our commitment to maintaining clear and consistent communication with you as we look to stay connected and engaged.

This report documents how City Council policies are implemented as a means to achieve established goals for taxpayers and to clearly explain the financial strategies and tactics applied to accomplish that work. Thanks to long-standing municipal financial policies that have served us well and continue to provide the foundation for the City's AAA bond rating with Standard & Poor's, Portsmouth has once again finished the fiscal year in a strong financial position.

In making strategic financial decisions such as the establishment of our rate stabilization policies, the timing of bonding and holding the line on rate increases and property tax revaluations, Portsmouth taxpayers were insulated from increases seen in other communities. These tactics were especially critical in FY23, where the limited supply chain and contractor availability made it prudent to advance projects that could be realized and adjust those that could not. Careful examination of each Department's budget requests, opportunistic use of ARPA and other COVID-relief funds and grants, and the implementation of practical efficiencies wherever possible allowed us to keep the tax rate in check.

The City, specifically our Finance Department, was again recognized for excellence in financial reporting. The Government Finance Officers Association awarded its Triple Crown to commend the Department for the clarity and professionalism of the City Budget, the PAFR and the Annual Comprehensive Financial Report. Our priority is to report the budget and the City's financial affairs to you in a transparent and easily-understood manner, and to provide extensive detail through links to online documents and guides for those who wish to understand in greater detail how City finances work.

On behalf of the Finance Team led by Director Judie Belanger, I am proud to work in support of the City Council's focus on a culture of cost management among all employees while maintaining the same level of services that directly support our high quality of life here in the great City of Portsmouth.

I am grateful to the City Department Heads and their staff who work to prepare budgets that allow us to deliver City services diligently and faithfully. We continue to withstand the effects of global economic uncertainty thanks in large part to the City's long-standing, financial practices and to the professional, loyal, hard-working and dedicated City staff. It is my honor to be the leader of this exceptional organization.

Sincerely,

A handwritten signature in black ink, appearing to read 'K. Conard'.

Karen S. Conard, City Manager



City Officials

(as of June 30, 2023)

City Manager
Karen Conard

Deputy City Manager/Regulatory Counsel
Suzanne Woodland

Assistant City Manager for Economic & Community Development
Sean Clancy

Director of Finance and Administration
Judith Belanger

Deputy Finance Director
Andrew Purgiel

Director of Public Works and Facilities
Peter Rice

City Attorney
Susan Morrell

City Clerk
Kelli Barnaby

Human Resources Director
Kelly Harper

Chief Information Officer
Patricia Ainsworth

Fire Chief
William McQuillen

Chief of Police
Mark Newport

Superintendent of Schools
Zach McLaughlin

Director of Planning & Sustainability
Peter Britz

Health Officer
Kimberly McNamara

Inspections Director
Shanti Wolph

Revenue Administrator/Tax Collector
Nancy Bates

Deputy Public Works Director
Brian Goetz

City Assessor
Rosann Maurice-Lentz

Recreation Director
Todd Henley

Library Director
Christine Friese

Welfare Administrator
Ellen Tully

Portsmouth City Council

Portsmouth Elected Officials (FY23)

Police Commission



Stefany Shaheen, Chair
Buzz Scherr
Kate Coyle



Deaglan McEachern, Mayor



JoAnna Kelley, Assistant Mayor

School Board



Nancy Novelline Clayburgh, Chair
Margaux Peabody, Vice-Chair
Ann M. Walker
Christina "Pip" Clews
Hope Van Epps
Liz Barrett
Lisa Rapaport
Brian French
Kerry Nolte



John Tabor



Josh Denton



Beth Moreau



Andrew Bagley

Fire Commission



Jennifer J. Mosher-Matthes
Michael K. Hughes
Richard Gamester



Vincent Lombardi



Rich Blalock



Kate Cook

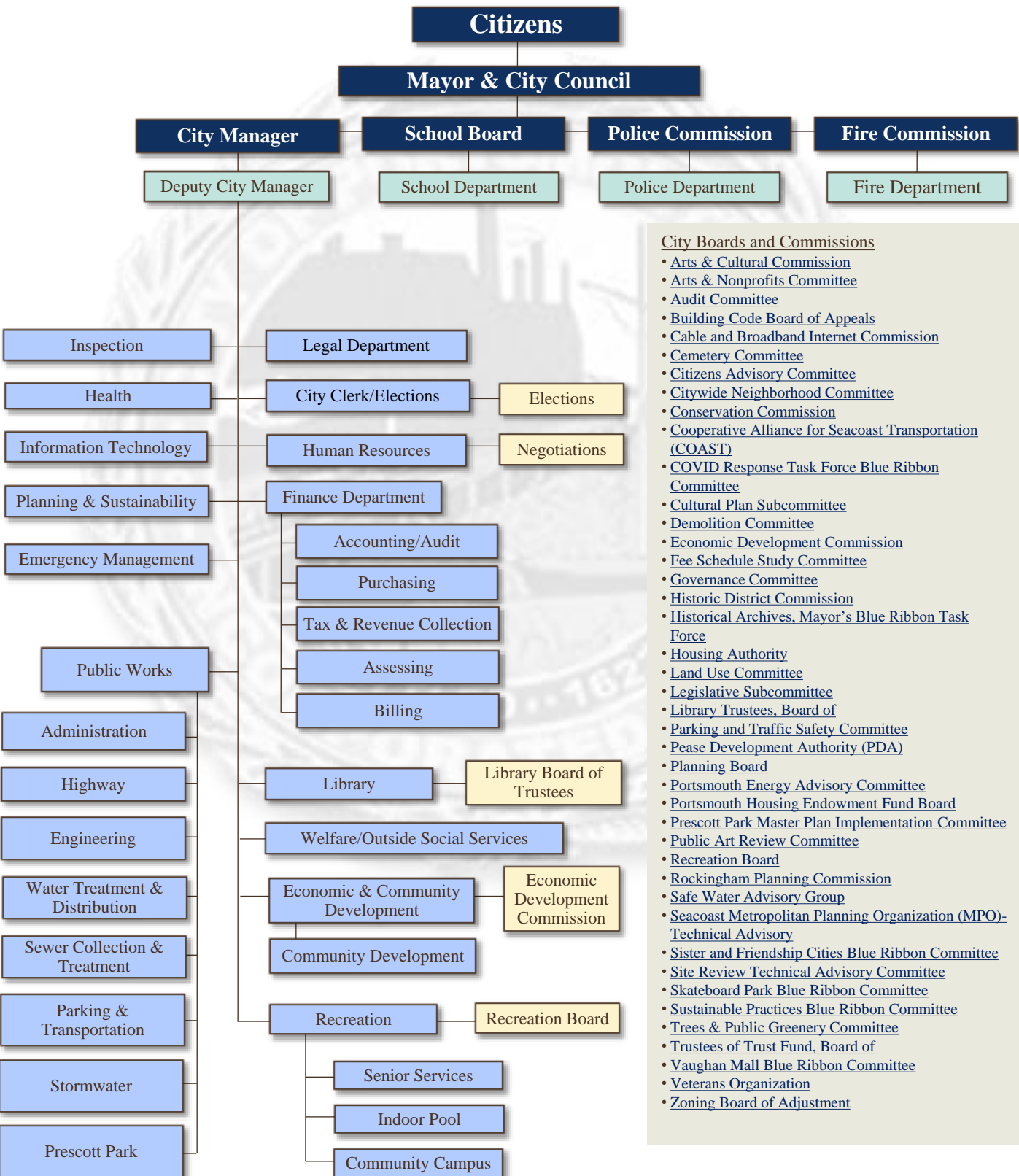
City Council meetings are held in the City Council Chambers, Municipal Complex, One Junkins Avenue, Portsmouth, New Hampshire 03801. The public is invited to attend City Council Meetings (meeting dates are available on the Meetings Calendar located on the City's website). The meetings are streamed live on Portsmouth's City YouTube Channel. For further information, call the City Clerk's Office at 603 – 610 – 7207.

FY23 Budget City Council Goals

- Invite and Honor Input from the Community, and Encourage Increased Participation/Engagement of Youth.
- Identify and Promote Strategies for Local Business Retention and Preservation of Affordable Commercial Spaces.
- Leverage Local Resources and Partnerships to Improve and Support Needs of Residents, Nonprofits, Arts, and Culture Community.
- Proactively Pursue the Integration of Sustainability, Resilience, and Climate Change Mitigation Actions Throughout City Government and the Community.
- Diversify and Enhance the Supply of Housing Choices.
- Continuously Enhance City Council Best Practices to Deliver a Trusted, Transparent, and Responsive Process.
- Consistently Communicate with Community Members and Stakeholders, Respecting Channels of Communication they Prefer and Keeping them Informed.

Citywide Organizational Chart

(As of June 30, 2023)



- City Boards and Commissions**
- [Arts & Cultural Commission](#)
 - [Arts & Nonprofits Committee](#)
 - [Audit Committee](#)
 - [Building Code Board of Appeals](#)
 - [Cable and Broadband Internet Commission](#)
 - [Cemetery Committee](#)
 - [Citizens Advisory Committee](#)
 - [Citywide Neighborhood Committee](#)
 - [Conservation Commission](#)
 - [Cooperative Alliance for Seacoast Transportation \(COAST\)](#)
 - [COVID Response Task Force Blue Ribbon Committee](#)
 - [Cultural Plan Subcommittee](#)
 - [Demolition Committee](#)
 - [Economic Development Commission](#)
 - [Fee Schedule Study Committee](#)
 - [Governance Committee](#)
 - [Historic District Commission](#)
 - [Historical Archives, Mayor's Blue Ribbon Task Force](#)
 - [Housing Authority](#)
 - [Land Use Committee](#)
 - [Legislative Subcommittee](#)
 - [Library Trustees, Board of](#)
 - [Parking and Traffic Safety Committee](#)
 - [Pease Development Authority \(PDA\)](#)
 - [Planning Board](#)
 - [Portsmouth Energy Advisory Committee](#)
 - [Portsmouth Housing Endowment Fund Board](#)
 - [Prescott Park Master Plan Implementation Committee](#)
 - [Public Art Review Committee](#)
 - [Recreation Board](#)
 - [Rockingham Planning Commission](#)
 - [Safe Water Advisory Group](#)
 - [Seacoast Metropolitan Planning Organization \(MPO\)- Technical Advisory](#)
 - [Sister and Friendship Cities Blue Ribbon Committee](#)
 - [Site Review Technical Advisory Committee](#)
 - [Skateboard Park Blue Ribbon Committee](#)
 - [Sustainable Practices Blue Ribbon Committee](#)
 - [Trees & Public Greenery Committee](#)
 - [Trustees of Trust Fund, Board of](#)
 - [Vaughan Mall Blue Ribbon Committee](#)
 - [Veterans Organization](#)
 - [Zoning Board of Adjustment](#)

FY23 Awards and Accolades

Peirce Island Wastewater Treatment Facility



NHDES Wastewater Plant of the Year and Engineering News Record New England "Best Project" Award: Peirce Island Wastewater Treatment Facility

Pease Wastewater Treatment



2022 EPA Regional Wastewater Treatment Plant Operator of the Year: Pease Wastewater Treatment Facility Plant Operator, Dave Lovely

Pease Water Treatment Plant



NH Division of Environmental Services 2023 Source Water Protection Award: for the City's ongoing efforts to protect properties around the Bellamy Reservoir through the purchase of conservation easements



Center for Disease Control (CDC) Water Fluoridation Award: Portsmouth and Pease water systems achieved optimal fluoridation levels for 12 months



NH Division of Environmental Services 2023 Source Water Protection Award: given for the City's ongoing efforts to protect properties around the Bellamy Reservoir through the purchase of conservation easements



ACEC Engineering Excellence Award for the Pease Drinking Water Treatment Facility

City of Portsmouth Public Works Department



The Arbor Day Foundation awarded the City of Portsmouth's Department of Public Works with its 25th Tree City USA designation



Water Environment Foundation from Associated Builders and Contractors (ABC) and the Environmental Protection Agency national awards



The Arbor Day Foundation awarded the City of Portsmouth's Department of Public Works' Parks and Greenery group its 5th Tree Growth Award

Inspection Department



2022 New Hampshire Building Officials Association Code Official of the Year: Portsmouth Building Inspector Timothy Metivier

School Department



45th Annual SkillsUSA NH Leadership & Skills Competition and Nationals - three gold medals and two bronze medals. The three gold medalists went on to participate in the national SkillsUSA conference.



Careers in Education, "Educators Rising NH" - eight students in the top three for their respective focus areas



NHIAA Division I Athletic Director of the Year: Thomas Kozikowski



Tourism Accolades

- [Fortune 50 Best Places to Live for Families 2023 \(Jun 2023\)](#)
- [Boston Sunday Globe, Three ways to celebrate Portsmouth's 400th anniversary](#)
- [Smithsonian Magazine, 15 Best Small Historic Towns to Visit in 2023](#)
- [The 15 Best Small Towns to Visit in 2023 | Travel | Smithsonian Magazine](#)
- [AAA Northern New England Journeys, Travel Destination: Portsmouth NH 400](#)
- [How NH Really Started: A 400th Anniversary Return to 1623 - New Hampshire Magazine \(nhmagazine.com\)](#)
- [WorldAtlas.com, 8 Coolest Small Towns in NH for Summer Vacation \(Apr 2023\)](#)
- [Livability.com, Top 25 Best Places to Live in the Northeast: Portsmouth #8 \(Mar 2023\) Top 25 Best Places to Live in the Northeast - Livability](#)
- [Travel + Leisure, 10 Best Places to Live on the East Coast - Portsmouth #2 \(Feb 2023\):](#)
- [TheTravel.com 10 Most Beautiful NH Towns You Should Visit \(Feb 2023\)](#)
- [Travel2Next.com, Things To Do in Portsmouth NH:](#)
- [Yankee, Holiday Winter Weekend in Portsmouth \(Nov/Dec 2022\)](#)
- [WhereverFamily.com, Romantic Dining in Portsmouth \(Dec 2022\)](#)
- [Country Living, 40 of the Prettiest American Towns to Visit in Winter \(#2\) \(Oct 2022\)](#)
- [AAA, 6 ways to celebrate the holidays outdoors with family \(Oct 2022\)](#)
- [US News & World Report, Top Romantic Getaways in NH \(Nov 2022\)](#)
- [House Beautiful, 44 Best Cities That Look Like Europe \(Sep 2022\)](#)
- [FamilyTravel.com Best New England Coastal Towns for Family Travel \(Sep 2022\)](#)
- [Livability.com Top 100 Places to Live in the US \(Jul 2022\)](#)
- [Conde Nast Traveler Best Things to Do in Portsmouth \(June 2022\)](#)

Engage in Your City Government

The City of Portsmouth offers several opportunities for Portsmouth Citizens to engage in its local government processes.

Annual Budget Process

- Budget Public Hearings (Police & Fire Commissions & School Board)
- Budget Public Hearing (City Council)
- Listening Sessions during City Council Budget Work Sessions

Capital Improvement Plan (CIP) Process

- [Citizen Project Request Forms](#)
- CIP Public Comments (Planning Board)
- CIP Public Hearing (City Council)

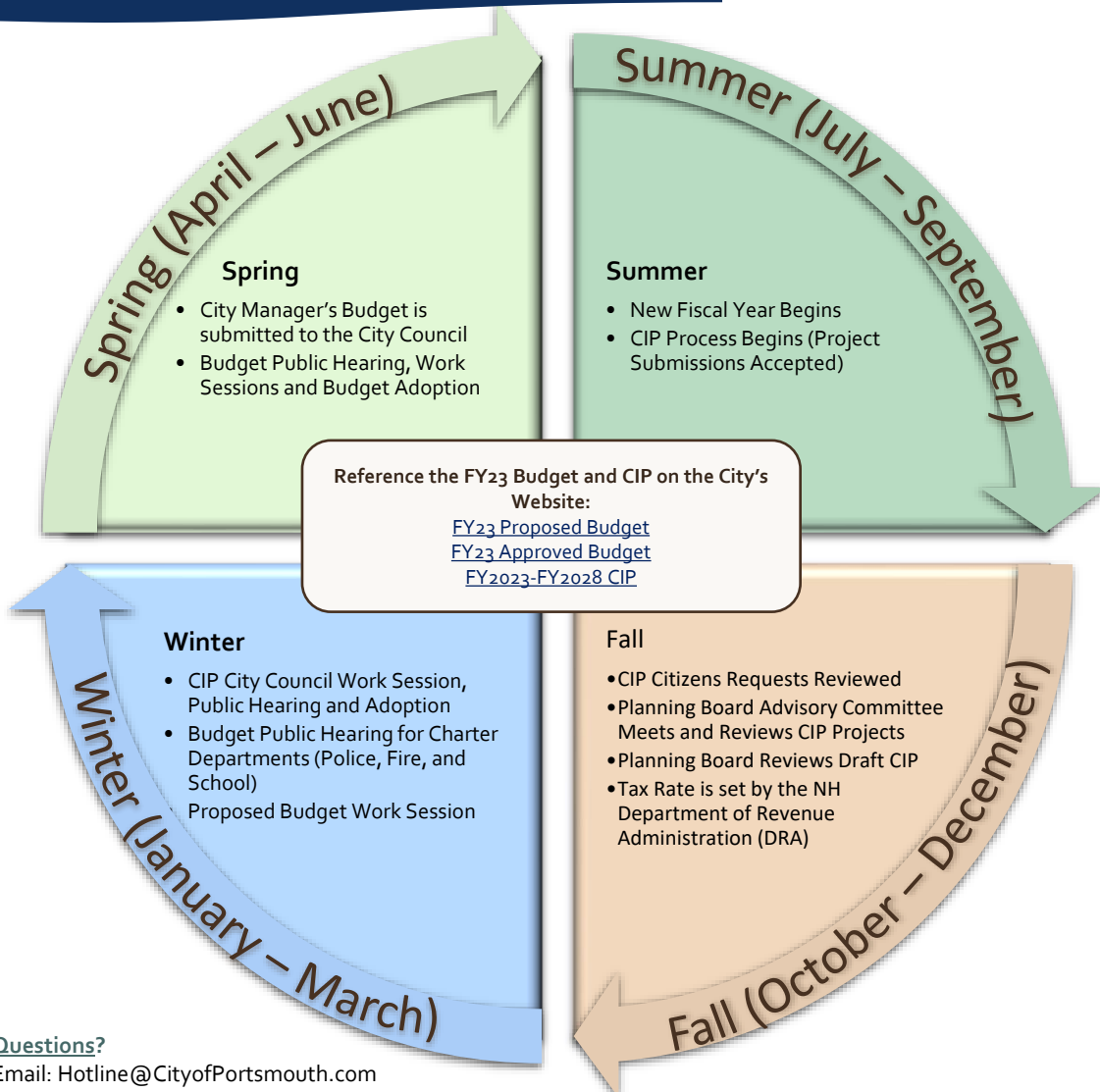
Other Public Input Sessions

- [City Council Public Comment Sessions](#)
- Boards, Commissions, and Committees Public Input Opportunities
- Planning and Public Works Public Input Sessions
- Master Planning Process
- Neighborhood Outreach Forum
- Economic Development ([Sister and Friends Cities Programs](#))

Boards, Commissions, Committees

- [Citywide Neighborhood Committee](#)
- [Citizen Advisory Committee \(for Community Development Block Grant funds\)](#)
- [Appointed Positions](#) (Boards, Commissions, and Committees)
- [Elected Positions](#) (Police Commission, Fire Commission, School Board)

FY23 Budget Process



Questions?

Email: Hotline@CityofPortsmouth.com

Portsmouth at a Glance...



Quick Facts

City Government

- Incorporated: 1849
- Form of Government: Council-Manager

Location

- County: Rockingham
- State: New Hampshire
- Tourism Region: Seacoast
- Planning Commission: Rockingham

Land

- Land Area¹: 16.8 square miles (15.7 square miles of land & 1.1 square miles of water)
- Public Parks & Playgrounds¹: 200+ acres
- Wetlands²: 3,538 acres

Driving Distance to Selected Cities

- [Manchester, NH: 45 miles](#)
- [Portland, ME: 53 miles](#)
- [Boston, MA: 56 miles](#)
- [Concord, NH: 59 miles](#)
- [New York City, NY: 265 miles](#)

Public Transportation

[COAST Bus Services](#)

- Operates a fixed-route bus service as well as on-demand service for ADA riders
- Operates a free weekend service around the Downtown on the Vintage Christmas Trolley for the month of December
- Operates the City's Senior Transportation Services

[Wildcat Transit](#)

- Provides bus service between downtown Portsmouth and the University of New Hampshire

[Amtrak Passenger Rail Link Service](#)

- Available between Portland and Boston with stops in Dover, Exeter, and Durham, NH

Nearest Airports

- [Pease International Airport](#)
- [Manchester-Boston Regional Airport](#)
- [Portland International Jetport](#)
- [Logan International Airport](#)

1. Source: Taintor&Associates, Existing Conditions, 2004
2. Source: City of Portsmouth, 2003 Wetlands Inventory

City Assets, Infrastructure, and Operating Indicators

Settled in 1623, Portsmouth is the nation's 3rd-oldest city with a rich heritage as a working seaport and the home of the State's only deep-water port. Portsmouth lies along the Piscataqua River, which divides New Hampshire and Maine. It is a regional economic and cultural hub located 56 miles north of Boston, Massachusetts and 53 miles south of Portland, Maine.

Public Safety - Police

- Police Stations: 1
- Police Vehicles: 35
- Police Canines: 2

Public Safety – Fire and Rescue

- Fire Stations: 3
- Fire Engines: 4
- Tower Truck: 2
- Heavy Rescue: 1
- Ambulance: 3
- Forestry Pick Up: 1
- Rigid Hull Inflatable Boat: 1
- Zodiac Boat: 1

Education

- [High School Buildings](#): 1
- [Middle School Buildings](#): 1
- Elementary School Buildings: 3

Public Works

- Miles of Streets (including Pease): 118
- Miles of Sidewalks: 74
- Bridges: 15
- City Owned Facilities Maintained: 9

Eco Municipality Assets

- [Recycling Centers](#): 1
- LED Streetlights: 1,600
- [Electric Charging Stations](#): 5 (7 plugs)
- Solar Panel Arrays: 2
- City Biodiesel Vehicles: 82
- City Electric Vehicles: 2
- City Open Space: 94 undeveloped parcels (932 acres)

Culture and Recreation

- [Libraries](#): 1
- Community Centers: 2
- [Senior Centers](#): 1
- Boat Dock Facilities: 2
- Swimming Pools: 3
- Tennis Courts: 6
- Pickelball Courts: 8

Parks, Playgrounds, and Cemeteries

- Playgrounds, Parks, and Ballfields: 26
- [Cemeteries](#) and [Burial Grounds](#): 6
- [Adopt a Spot Gardens](#): 48
- Greenspace Maintained: 80+ acres

Parking and Transportation

- Parking Garages: 2
- Garage Spaces: 1,491
 - [Foundry Place](#): 600
 - [Hanover](#): 891
- Metered Street Parking Spots: 671
- City Owned Parking Lots: 12
- City Owned Free Lots: 7 lots (464 spaces)
- Private Parking Lots with City Agreements: 2 lots (78 spaces)
- Bike Racks: 39
- Public Transit Options: 3

Water System:

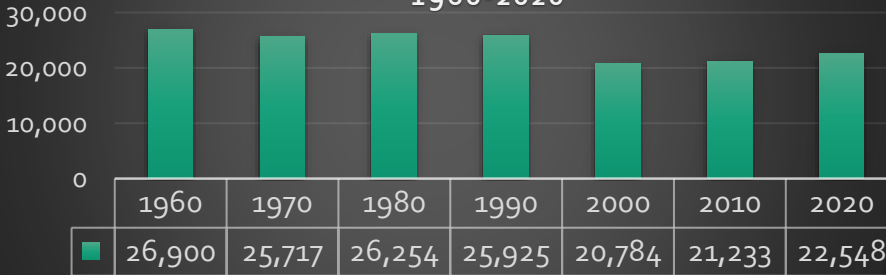
- Miles of Water Mains: 191
- Service Connections: 8,661
- Storage Capacity in Gallons (millions of gallons): 11
- Maximum Daily Capacity of Plant (millions of gallons): 4.0
- Water Balance (production v. billed and known use) – percentage: 2.67%
- Fire Hydrants: 1,035
- Precipitation for FY: 46.01 in

Sewage System

- Miles of Sanitary Sewers: 107
- Treatment Plants: 2
- Service Connections: 6,792
- Maximum Daily Capacity of Treatment (millions of gallons): 25.3

Portsmouth Demographics

Portsmouth Population Decennial Trends
1960-2020

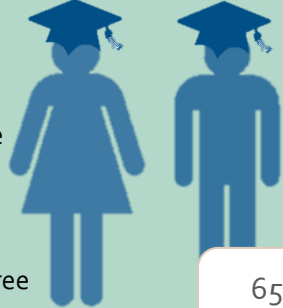


Population 22,277

Educational Attainment

97.2%

High School Graduate or Higher



63.1%

Bachelors Degree or Higher

22.4%

Graduate or Professional Degree

Housing Statistics

10,435 Households

11,184 Housing Units (94% Occupancy)

\$100,169 Median Household Income

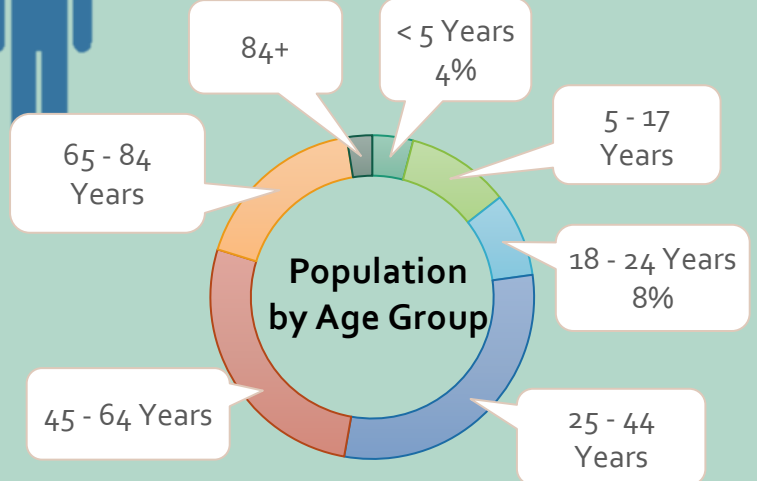
\$1,660 Median Gross Rent

2.07 Average Household Size

Renter-occupied
48%

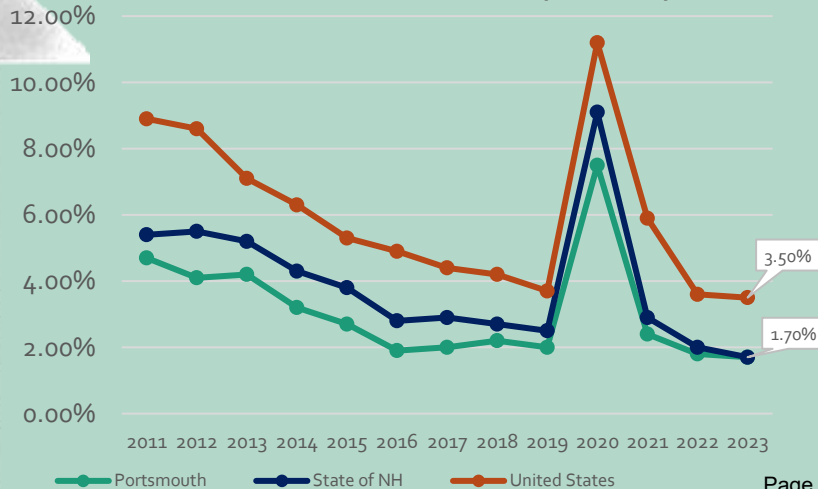


Owner-occupied
52%



Annual Average Unemployment Rates 2011-2023
Portsmouth is consistently lower than the state and region in unemployment rates.

(Source: Portsmouth Economic Development Department)



Economic Indicators



Total Valuation Before Exemptions

TY22 (FY23)

	Total	Count
Commercial *	\$ 2,751,922,983	1,418
Residential **	\$ 3,772,671,596	7,532
Totals	\$6,524,594,579	8,950

* Includes Pease Non-Airport and Utilities, does not include Pease Airport

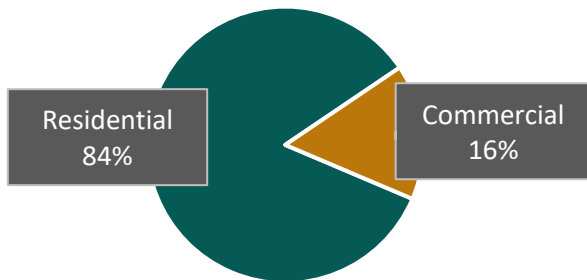
** Includes single family, condos, multi-family units, mobile homes, and vacant land

Residential Vs. Commercial

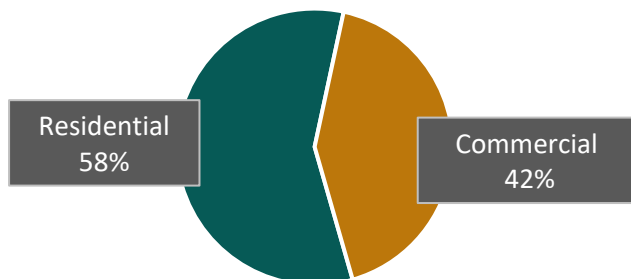
Important Numbers

- Residential Properties** make up **84%** (by count) of the properties in Portsmouth and pay **58%** of the tax burden.
- Commercial Properties** make up **16%** (by count) of the properties in Portsmouth and pay **42%** of the tax burden.

Residential vs. Commercial Properties by Percent of Taxable Parcel Count TY 2022 (FY2023)



Residential vs. Commercial Properties by Percent of Total Assessed Value TY 2022 (FY2023)

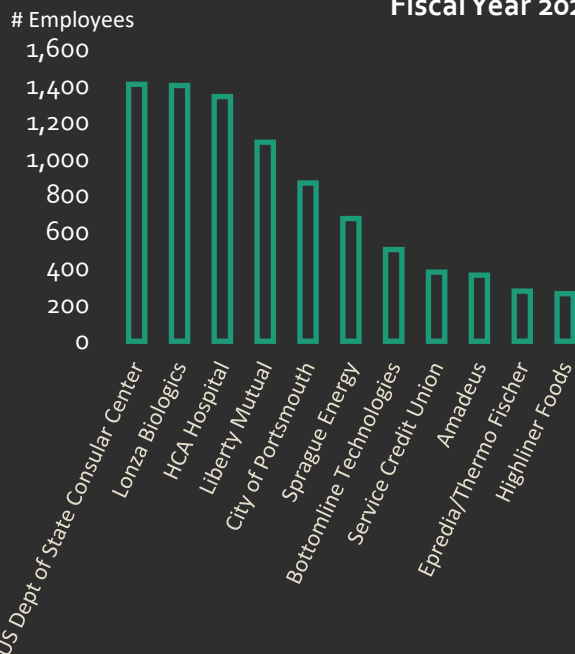


FY = Fiscal Year July 1st to June 30th
 TY = Tax Year April 1st to March 30th



Largest Portsmouth Employers

Fiscal Year 2023



Top 5 Taxpayers FY2023

The top 5 Taxpayers in Portsmouth paid 5.78% of the City's taxes in FY2023.

Company	Business Type	Percentage of Total Taxable Property
Public Service of New Hampshire	Utility	1.90%
HCA Health Services	Medical Building	1.42%
Arbor View & The Pines LLC	Apartment Complex	0.91%
Cate Street Development LLC	Mixed Use	0.78%
Northern Utilities Inc.	Utility	0.77%

Property Tax Rate



**Tax Rate Fiscal Year 2023
(Tax Year 2022)**
\$15.20 (per \$1,000)

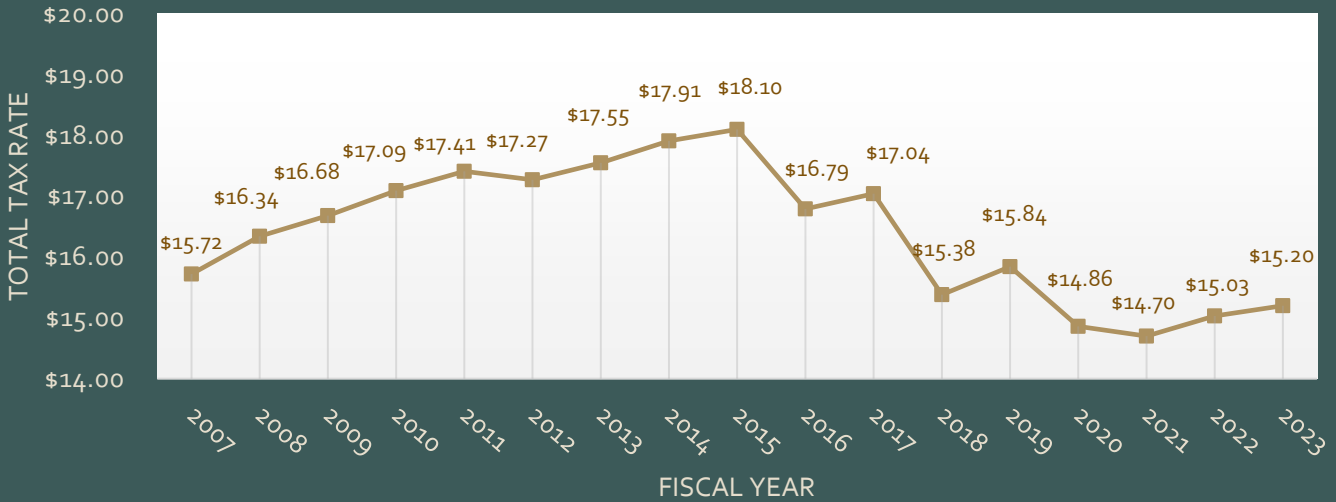
Municipal - \$7.59

County - \$0.85

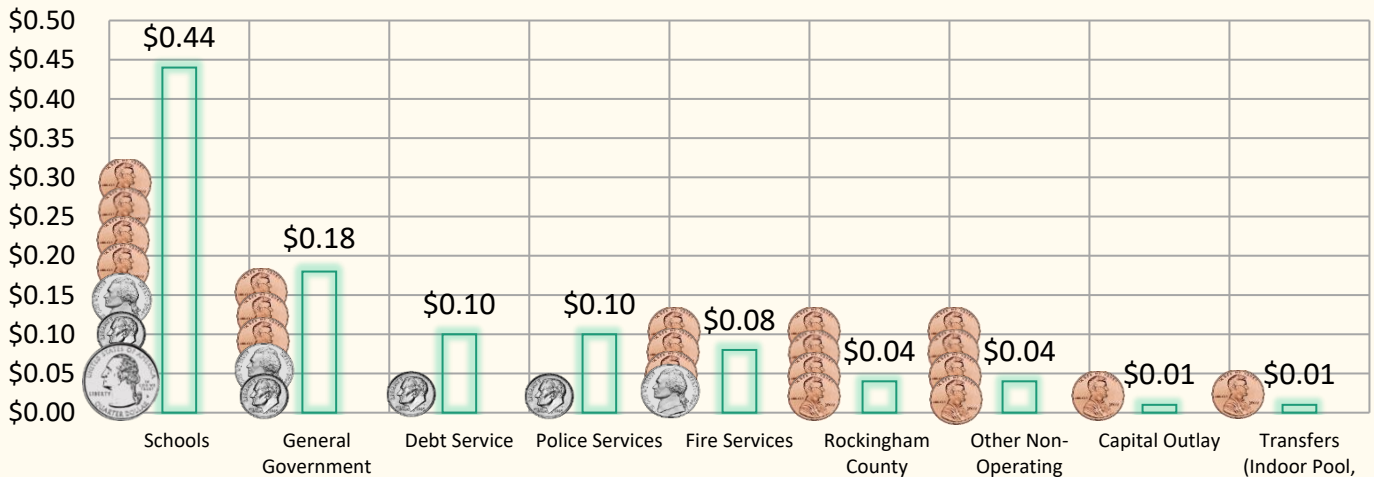
Local Education - \$5.40

State Education \$1.36

Portsmouth, NH Total Tax Rate
(Fiscal Years 2007-2023)



Where does \$1 of your Property Tax Money Go?

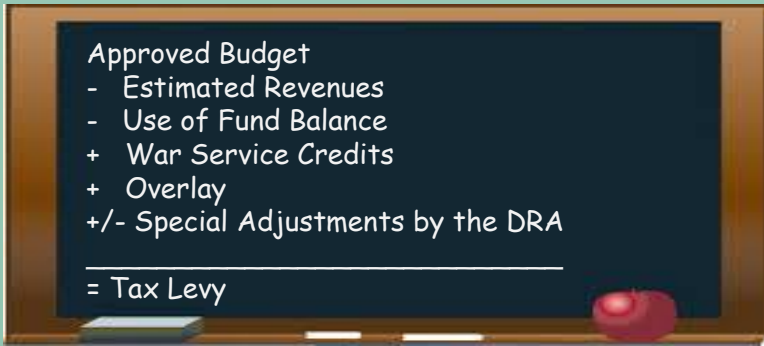


Property Tax Levy, Assessments, and Equalization

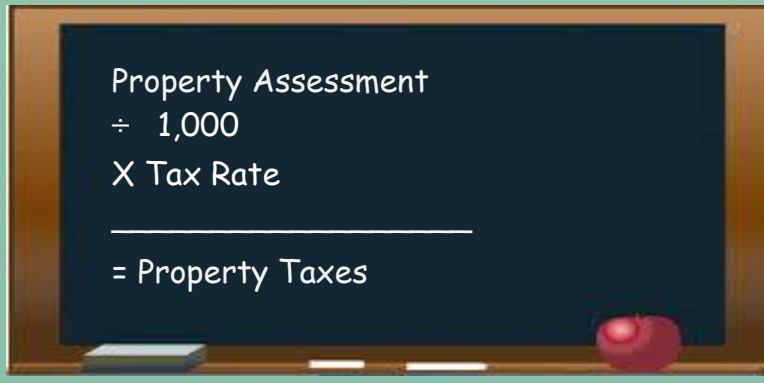
Property Tax Levy and Taxes

The City Council annually adopts a budget that consists of program-related operating and non-operating appropriations. Estimated Revenues (from fees/fines/etc.) are then subtracted from the annual appropriations resulting in a Tax Levy.

The Tax Levy is the amount of money that the City must raise through property taxes.



The Tax Rate is set annually in the fall by the State of New Hampshire. Once the tax rate is set, the formula to calculate what your property tax is as follows:



Property Assessments

Property Assessments, a value placed on each property in the City, are based on the market value and qualified comparable sales for each individual property, as well as other contributing factors, as of April 1st of each year. The State of New Hampshire relies on the assessment of values of properties at market value to attain fairness and equality to ensure the tax burden is proportionally spread across all property types.

Lookup Your Property's Assessed Value Online: <http://gis.vgsi.com/portsmouthnh/>

Equalized Tax Rate

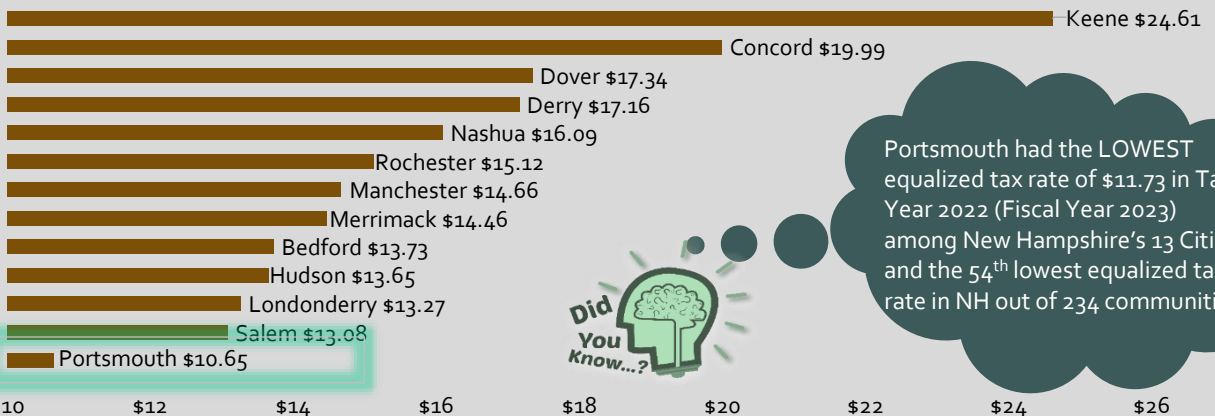
What is Equalization?

Each year the New Hampshire State Department of Revenue Administration (DRA) performs a statistical study of all of the State's municipal valuations. The study utilizes sales data to adjust all municipalities to 100% market value. This process is called equalization.

How is Equalization Used?

The State of New Hampshire utilizes the Equalized Value of each Town or City in order to proportionately share common tax burdens such as County Taxes and State Education Property Tax.

Total Equalized Tax Rate 2022 (FY 2023)
 (NH Communities with a Population of at Least 20,000 Residents)



Portsmouth had the **LOWEST** equalized tax rate of \$11.73 in Tax Year 2022 (Fiscal Year 2023) among New Hampshire's 13 Cities and the 54th lowest equalized tax rate in NH out of 234 communities.

Property Tax Timeline & Tax Relief

Important Dates

Tax Year

April 1 – March 30



Tax Assessment Date

April 1st

Tax assessments are adjusted annually based upon property inventory as of April 1st per NH RSA 75:8

City Fiscal Year

July 1 – June 30

Tax Rate

Tax rate is set by the [New Hampshire Department of Revenue Administration \(DRA\)](#) in late Fall (October - November)

Property Tax Bill

Tax bill payment options:

- City Hall (in the Tax Office)
- Online
- Pay by Phone
- Checks by Mail
- Drop Box located in front of City Hall

Tax Bill Due Dates

- **December** - First ½ of the total property tax bill
- **June** - Second ½ of the total property tax bill

Partial payments and pre-payments are accepted and encouraged. Contact the Tax Office at 603-610-7244 for more information.

Go Paperless

Paperless billing is now available for Water/ Sewer and Tax payments. Visit www.cityofportsmouth/city/pay-my-bill.

PAPERLESS BILLING

1

LOGIN OR SIGN UP
for the City's InvoiceCloud system.

2

SELECT
the paperless option for each invoice type.

3

VERIFY
your email address via the link sent to you.

IT'S AS EASY AS 1-2-3.

Safe, secure, and free!

YOU BENEFIT

- No more paper bills.
- See your bill any time.
- Push notifications when your bill is ready.

Tax Relief

Allowable by State Statute, the City of Portsmouth offers numerous options for Tax Relief for qualified residents.

• Veteran's Exemption

- Standard & Optional Veteran's Tax Credit (RSA 72:28)
-OR- All Veteran's Tax Credit (RSA 72:28-b)
- Surviving Spouse (RSA 72:29-a)
- Optional Tax Credit for Combat Service (RSA 72:28-c)
- Tax Credit for Service-Connected Total Disability (RSA 72:35)
- Certain Disabled Veterans – Total Exemption (RSA 72:36)

• Elderly and Disabled Exemptions

- Elderly or Disabled Tax Deferral (RSA 72:38-a)
- Elderly Tax Exemption
- Disabled Tax Exemption
- Blind Tax Exemptions
- Exemption for Improvements to Assist Persons with Disabilities

• Religious and Charitable Exemptions

• Solar Energy Systems Exemption

• Wind Powered Energy Systems Exemption

• Financial Hardship Application

Abatement Process

Property owners who wish to contest their assessments may request a review of their value by filing an abatement application with the Assessing Department.

- ✓ March 1st is the deadline to file the abatement application with the Assessor. The application can be found online. The Assessing Department must issue a response no later than July 1st.
- ✓ Property owners wishing to appeal the Assessing Department's decision can file with either the NH Board of Tax and Land Appeals or Rockingham County Superior Court by September 1st.

Contact the Assessor's Office for more information:

Phone: [603-610-7249](tel:603-610-7249)

Online: <https://www.cityofportsmouth.com/assessors>

FY23 Spotlight: Community Campus

The Community Campus is a 72,000 square foot facility managed by the Recreation Department. The City of Portsmouth purchased the building and surrounding acreage in 2022 from the Foundation for Seacoast Health. The building is home to multiple non-profit agencies that service Portsmouth and the greater Seacoast region. Those organizations include Seacoast Community School, Child Advocacy Center of Rockingham County, David Krempels Brain Injury Center, and Seacoast Outright. It will soon be home to Robert J. Lister Academy as well. The Recreation Department hosts all of its youth enrichment programs at the Campus now, and a full-time afterschool program is slated to be start there in the near future.



Amenities

-  **Gymnasium**
-  **Walking Trails**
-  **Playgrounds**
-  **Indoor & Outdoor Pickleball Courts**
-  **Athletic Fields**
-  **Greenhouse**
-  **Meeting Space**
-  **Art Room**
-  **Teaching Kitchen**

A sampling of programs hosted at the Community Campus:

- Snapology STEM Camp
- Various Afterschool Classes
- Volleyball Program
- Portsmouth High School Cheer Camp
- UNH Extension Master Gardeners Program
- Little League Award Ceremony
- Pre-K Music Together
- Seacoast Table Tennis Club
- Gather Food Bank Mobile Market
- Red Cross Blood Drives
- Seacoast Outright Teen Nights
- Indoor & Outdoor Pickleball
- Open Gym & Basketball Practices
- Various Board Meetings
- WIC Appointments
- Portsmouth Music and Arts Center Arts Camp
- Lego Robotics Program
- Prescott Park Arts Festival Rehearsals
- Senior Supper Club
- Library programs
- NH Humanities Lectures
- Special Events – Valentine’s Dance, Holiday Lunch
- City Meetings
- Community Concerts
- Mom & Me Yoga
- Battle of the Bands Fundraiser
- Intro to Skateboarding Sessions
- Pop Up Family Events – Magic Shows, Center for Wildlife
- ForestKids Outdoor Education
- Special Olympics Young Athletes Program
- Girl Scouts


Community Campus is the Recreational Hub of Portsmouth.




The Recreation Department holds over 60 program sessions or events in the Community Campus per year utilized by over 1600 participants, plus is host to multiple tenant programs and events as well.



For program info: cityofportsmouth.com/recreation

 City of Portsmouth NH Recreation

 PortsmouthRecreation

Charter Departments (Police, Fire & School)



Police Department



Mason and his handler Detective Rochelle Jones

Meet Mason the Comfort Dog

In FY23, the Portsmouth Police Department welcomed Mason the Comfort Dog. Mason is a 14-month-old male, black American Labrador Retriever who comes to the City from a non-profit organization called Hero Pups. Hero Pups provides comfort, emotional support, service, and therapy dogs to first responders and Veterans. Mason was sponsored by AT&T FirstNet. His handler is Detective Rochelle Jones.

Job Description

Mason will help boost morale for police officers, City personnel, and their families and be available for victim interviews to reduce stress. In between, he'll make appearances at community events, schools, assisted living facilities, and wherever else he is needed that is within his responsibilities.

Things to Remember When Interacting with Mason

Feel free to pet Mason. Please refrain from giving him commands. Please do NOT give him treats (his handler gives him plenty). He will gladly accept toys.

If anyone would like to contact Mason or has a request for an appearance, please email: Masonthecomfortdog@portsmouthnhpd.gov



FY23 Statistics

45,282 (17.2% ↑)
Police Department Service Calls

8,051 (4.1% ↓)
Total Motor Vehicle Stops

1,639 (62.6% ↑)
Total Number of Arrests

Fire Department

FY23 Accomplishments

Portsmouth Fire Department received the gift of a 1920 LaFrance Chemical Fire Truck from the Friends of Italian Americans and Bayberry Vintage Autos.

As part of the City's 400th Anniversary, the Fire Department, the Federal Fire Society and the Mechanic Fire Society hosted three open house events to showcase history of the Fire Service through photographs, artifacts, early fire engines, and informal talks.

The Fire and Information Technology (IT) Departments collaborated on a project to connect all of the Fire Stations together using large screen computer monitors. This system is used for training, allows for live briefing from the shift commander for large/complex events, and sharing of Incident Action Plans.



School Department



Mary C. Dondero Elementary School was recognized as a 2023 National Blue Ribbon School, which recognizes exemplary achievement in education by honoring high-performing schools.



New Franklin Elementary School was named #2 best elementary school in the state of New Hampshire by US News & World Report.

#6

Portsmouth School District was rated #6 in Best School Districts in New Hampshire according to Niche (www.niche.com).

Niche also ranked the Portsmouth School System:

- #1 School System in Rockingham County
- #10 Best School District for Athletes in NH
- #13 Best Places to Teach in NH

CHAMPIONSHIP FINALISTS:

- Girls Ice Hockey
- Girls Lacrosse
- Boys Lacrosse



Portsmouth School Enrollment

	Elementary School (P, K-5)	Middle School (6-8)	High School (9-12)
# of Schools	3	1	1
Grade Levels	P, K-5	6-8	9-12
Total Enrollment	944	499	1,031

Community Services (Recreation & Public Library)



Recreation

Experience the Recreation Department's Wide-Range of Services and Events!

- A new 20,000 square foot [skatepark](#) is under construction and opened in December 2023. The Recreation Department has partnered with First Push Syndicate to offer Intro to Skateboarding sessions throughout the year.
- The Recreation Department manages numerous facilities, fields and programs. Visit the Department's Website at <https://www.cityofportsmouth.com/recreation> for information on the [Community Campus](#), [Connie Bean Youth Recreation Center](#), [Spinnaker Point Adult Recreation Center](#), [Senior Activity Center](#), and [Indoor Pool](#). The Department also manages a [boat launch](#), [marina](#), [athletic turf field complex](#), [South Mill Pond Recreation Complex](#), and an [outdoor pool](#). There is a bi-annual program guide that lists all of the scheduled activities and events online as well.
- The Recreation Department is synonymous with [summer camp](#). Each year a full day camp takes place at the Connie Bean Center along with a host of other smaller camps. In addition, you can count on the Recreation Department for [soccer](#), [basketball](#), [tee ball](#), [arts & theater](#), [STEM programs](#), and many [Seasonal Special Events](#) including the annual Fall Family Fun Fest, Valentine's Day Dance, Tree of Love, Egg Hunt, Fireworks, Turkey Shoot and Holiday Parade.
- The [Community Campus](#) facility is the new recreation hub of the City and continues to serve the long-standing non-profit tenants as well as expanded Recreational programs including afterschool programming, open gym, and preschool activities. Bus service from all three elementary schools is available to transport students to the afterschool activities.
- The [Senior Activity Center](#) offers many recurring activities & events including a [comprehensive monthly senior newsletter](#). There are lots of day trips, as well as overnight trips to Iceland and Ireland. Special events draw large numbers of seniors, including the annual cookout which serves 250 people and the Thanksgiving and Holiday Luncheons which took place at the Campus thanks to the large gym.
- Portsmouth Seniors can take free medical rides and low cost shopping trips utilizing [Portsmouth Senior Transportation](#) in partnership with COAST from Monday – Friday (6am – 6pm). Call TripLink [603-834-6010](tel:603-834-6010) or email triplink@communityrides.org for more information.
- The [Indoor Pool](#) continues to offer a wide variety of aquatics programs. Participants' favorite [programs](#) include open swim, senior aqua fitness, swim lessons, Portsmouth High School's swim team, and private rentals. See pool schedule here <https://www.cityofportsmouth.com/recreation/indoor/indoor-pool-schedule>.



The Recreation Department has moved to online registration for all of its programs. Check out the [Recreation Department's Website](#) for more information!



Public Library

Come see what the Library has to offer!

For All Ages

- [Computers, Wifi, printing, scanning, copiers and fax machine](#)
- [3D Printing](#)
- [Museums passes](#)
- [Fun Stuff to borrow](#)
- Downloadable [ebooks, audiobooks, magazines, comics, movies & TV shows](#)
- [Research databases](#) for car repair, legal research, language and computer classes and more
- [PPL Rex](#): reading suggestions plus personalized book bundles and book lists
- [Exhibits](#)
- Film Screenings
- [Eleven Little Free Libraries](#) around Portsmouth
- [Cold Weather Coat Swap](#)

Adults

- Six [Book Clubs for Adults](#)
- [Weekly Meditation](#) daytime and evening
- Six [Language Discussion Groups](#)
- [Wireless Printing](#), Scanning, Faxing, [Computers & Wi-Fi](#)
- [Monthly Genealogy Workshops](#) and Local History Talks
- Mah Jongg
- Shakespeare Discussion Group
- [World Affairs Discussion Group](#)
- The Planner Society
- We Craft
- [Drop-In Device Help](#)
- Guitar Concerts
- Talks and Workshops on a variety of other topics, including mindfulness, writing, death, civics and more

Youth & Teens

- [Story Times](#)
- Five Book Clubs for Youth & Teens
- Outreach activities at local organizations, including Gosling Meadows, PEAK, Families First, Seacoast Science Center, local schools
- Partnering with City departments such as Family Fun Fest
- [Reading Dogs](#)
- LEGO Club (K-5)
- Crazy 8's Math Club (K-2)
- Middle School Mondays with games and crafts
- Homeschool Hangout
- [Hive Mind](#), [Teen D&D](#) and [Babysitter courses](#)
- Quarterly Reading Challenges to promote early literacy
- Summer Reading with programs and prizes

In FY23 the Library loaned out 328,163 items.

157,681 people visited the Portsmouth Public Library in FY23.

Visit the [Portsmouth's Library's Events Calendar](#) for a full listing of events.

Highway Division



1,074 Click N' Fix Items Addressed in FY23



48 Adopt-A-Spot Gardens within the City



82 City Biodiesel Vehicles

2 City Electric Vehicles



365 Period LED Downtown Street Lights

Parking Division

*FY23 Services Provided by the Parking Division helped offset Property Taxes by **67 cents.***

Services Provided:

- Transportation Programs
- Salaries & Benefits
- Paving Parking Lots
- Snow Removal
- Transportation Services
- School Bus Support
- Police Services Support
- Fire Services Support
- Bike/Pedestrian Plan Implementation

What is the Downtown Workforce Parking Program?

\$3 per Hour for a **10** hour parking session

Bring an application, your photo ID, and a check stub from a downtown business to the Foundry Parking Garage.

<https://www.cityofportsmouth.com/publicworks/parkportsmouth/downtown-workforce-parking-program>

Water & Sewer Divisions

FY23 Accomplishments

- Bellamy Reservoir Water Protection Project
- PFAS Treatment Piloting at Pease
- Sagamore Avenue Sewer Extension Project, Water and Sewer Pipe Replacements and Upgrade
- Sewer Separation Work
- Islington Street Corridor Roadway Improvements

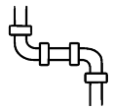
1,035 Fire Hydrants in the City



13 Water Main Breaks



107 Miles of Sanitary Sewers



190 Miles of Water Mains

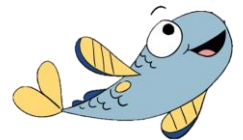
46.08 Inches of Precipitation



Stormwater Division

FY23 Accomplishments

- Stormwater BMPs (Best Management Practices) continued
- Stormwater Division Outreach: "Think Blue" Strawberry Banke Museum Exhibit



Stormwater Resources:

www.cityofportsmouth.com/publicworks/stormwater/about

Portsmouth Department of Public Works: (603) 427-1530

Learn More About Stormwater Do's And Don'ts



FY23 Financial Highlights



Judith Belanger
Director of Finance and
Administration
jabelanger@cityofportsmouth.com



I am pleased to present the City of Portsmouth's Popular Annual Financial Report (PAFR) for the Fiscal Year ended June 30, 2023. The PAFR is intended to increase knowledge throughout the community of Portsmouth's financial condition using a readily accessible and easily understandable report.

This report extracts and summarizes financial information from the Annual Comprehensive Financial Report (ACFR) that may be most informative to the citizenry of Portsmouth, and other interested parties, and is not intended to conform to Generally Accepted Accounting Principles (GAAP).

The PAFR provides pertinent information regarding expenditures, revenues, fund balance, debt service, and capital asset investments for Governmental and Proprietary Funds. It does not include information on all City's Funds or Component Units.

The Annual Comprehensive Financial Report (ACFR) is presented in accordance with Generally Accepted Accounting Principles (GAAP) and includes additional financial statements, note disclosures and required supplemental information, citywide initiatives, accomplishments, and statistical data. The complete audited ACFR is available on the City's website at <http://files.cityofportsmouth.com/finance/FY23/ACFR23.pdf>.

The interactive PAFR is available on the City's website which offers the ability to "click" on various links identified throughout this publication. Please visit <http://files.cityofportsmouth.com/finance/FY23/PAFR23.pdf>.

It is my hope that you find this report helpful and easy to read. I welcome any questions, comments, and/or suggestions regarding this document.

Government Finance Officers Association (GFOA) Awards



Certificate of Achievement
Financial Reporting

Certificate of Achievement for Excellence in Financial Reporting

GFOA awarded a Certificate of Achievement for Excellence in financial Reporting to the City of Portsmouth for its Annual Comprehensive Financial Report (ACFR) for Fiscal Year ended June 30, 2022. The City has received a total of thirty (30) awards for Fiscal Years ending June 30, 1988, 1989, and twenty-eight consecutive years from 1995 to 2022.



Award for Outstanding Achievement
Popular Annual Financial Reporting

Award for Outstanding Achievement in Popular Annual Financial Reporting (PAFR)

GFOA awarded the City an Outstanding Achievement in the Popular Annual financial Reporting for its Fiscal Year ended June 30, 2022 publication. The City has received a total of six (6) consecutive PAFR awards.



Distinguished Budget Presentation Award

Distinguished Budget Presentation Award

GFOA awarded the City the Distinguished Budget Presentation Award for its Fiscal Year beginning July 1, 2022 (FY23) budget document. The City has received a total of seventeen (17) consecutive awards.



Triple Crown

GFOA awarded the City a Triple Crown medallion for receiving all three GFOA Awards (ACFR, PAFR, and Budget Awards) for Fiscal Years 2019, 2020, 2021, and 2022.

Helpful Financial Terms

Abatement	An official reduction or elimination of one's assessed valuation after completion of the original assessed value.
Accrual Basis of Accounting	A basis of accounting in which revenues are recognized in the accounting period in which they are earned, and expenses are recognized in the period in which they are incurred.
Appropriation	An authorization granted by a legislative body to make expenditures and incur obligations for specific purpose.
Assessed Valuation	The fair market value placed upon real and personal property for levying property taxes.
Bond Premium	An amount that the underwriter provides to the issuer at the closing of bonds in addition to the principal (par) amount borrowed.
Business-Type or Enterprise Funds	A type of fund used in governmental accounting to account for activities that provide goods or services to the public for a fee that is meant to make the entity self-sustaining.
Capital Assets	Land, improvements to land, easements, building, building improvements, vehicles, machinery, equipment, and all other tangible or intangible assets that are used in operations and that have initial useful lives extending beyond a single reporting period.
Deferred Inflows and Outflows of Resources	Represents acquisition (inflows) and consumption (outflows) that are applicable to future reporting periods.
Fund Balance	The excess of an entity's assets over its liabilities also known as excess revenues over expenditures or net assets. Fund Balance can be further segmented as follows: <ul style="list-style-type: none"> • Non-spendable – Represents fund balance not available to be spent or legally required to be maintained intact. • Restricted – Represents fund balance that is restricted by creditors, grantors, contributors, or laws and regulations of other governments. • Committed – Self-imposed limitations set in place prior to the end of the period. • Assigned – Represents intentional constraints placed on resources utilized in subsequent periods for capital outlay projects and non-recurring expenditures. • Unassigned – Represents fund balance that is available for any purpose.
General Fund	Chief operating fund of the government.
Net Position	Reflects the City's net worth. Net Position = Assets (+) Deferred Outflows (-) Liabilities (-) Deferred Inflows.
Overlay	An appropriation to fund potential tax abatements.
State Revolving Loan Fund (SRF)	A fund administered by the State for the purpose of providing low-interest loans for investments in water and sanitation infrastructure.

The City's financial activities in total are made up of two classifications:

GOVERNMENTAL FUNDS:

- General Fund---Account for all general operating expenditures and revenues. This is the City's largest fund and primarily funded from property taxes.
- Special Revenue Funds---Proceeds of specific revenue sources that are restricted for a specific purpose.
- Capital Funds---Capital projects for City infrastructure improvements.
- Debt Service Funds---Principal and interest payments on a special assessment bond.
- Permanent Funds---Resources that are legally restricted to the extent that only earnings (not principal) may be used for purposes that support the reporting government's programs.

BUSINESS-TYPE OR ENTERPRISE FUNDS:

- Water Fund---Production, delivery, and storage of safe water supported primarily with user fees.
- Sewer Fund---Collection, transportation, and treatment of wastewater supported primarily with user fees.

Financial Position - Statement of Net Position

Net Position \$293.9 Million

Statement of Net Position presents information on all City funds' assets and liabilities, deferred inflow/outflows of resources, with the difference reported as net position. Over time, increases or decreases in net position may serve as a useful indicator as to whether the City's financial position is improving or deteriorating.

At the close of the fiscal year, the City's total net position of \$293.9 million represents an increase of \$26.1 million or 9.7% from FY22.

City of Portsmouth, NH Statement of Net Position (in Thousands)

	Governmental Activities		Business-Type Activities		Total		Total Percentage Change 2022-2023
	2023	2022	2023	2022	2023	2022	
Current and other assets	\$ 135,029	\$ 116,707	\$ 91,868	\$ 64,224	\$ 226,897	\$ 180,931	25.4%
Capital assets	270,153	269,934	262,699	260,977	532,852	530,911	0.4%
Total Assets	405,182	386,641	354,567	325,201	759,749	711,842	6.7%
Deferred outflows of resources	25,890	25,341	1,447	1,385	27,337	26,726	2.3%
Total assets and deferred outflows	\$ 431,072	\$ 411,982	\$ 356,014	\$ 326,586	\$ 787,086	\$ 738,568	6.6%
Long-term liabilities	\$ 244,339	\$ 214,199	\$ 171,734	\$ 178,183	\$ 416,073	\$ 392,382	6.0%
Other liabilities	27,705	35,692	9,898	6,250	37,603	41,942	-10.3%
Total liabilities	272,044	249,891	181,632	184,433	453,676	434,324	4.5%
Deferred inflows of resources	9,900	34,735	29,611	1,697	39,511	36,432	8.5%
Net position:							
Net investment in capital assets	163,203	158,507	114,949	109,948	278,152	268,455	3.6%
Restricted	23,588	15,727	-	-	23,588	15,727	50.0%
Unrestricted	(37,663)	(46,879)	29,822	30,508	(7,841)	(16,371)	-52.1%
Total net position	\$ 149,128	\$ 127,356	\$ 144,771	\$ 140,456	\$ 293,899	\$ 267,812	9.7%

Net Investment in Capital Assets is the largest portion of net position and reflects our investment in capital assets (e.g. land, buildings, machinery and equipment), less any related debt used to acquire the assets that is still outstanding. As of year-end, net investment in capital assets is \$278.2 million, an increase of \$9.7 million from FY22. These capital assets are used to provide services to citizens.

Restricted Net Position of \$23.6 million represents 8% of resources that are subject to external restrictions on how they may be used.

Unrestricted Net Position is the remaining amount of net position not restricted for a specific purpose. There are two reporting mandates from Governmental Accounting Standards Board (GASB): 1) Net pension liability representing the City's share of the New Hampshire Retirement System's unfunded liability and 2) Other Post-Employment Benefits (OPEB) liabilities. This resulted in an ending balance in Unrestricted Net Position of a negative \$7.8 million. [Detailed information regarding these liabilities can be found in notes 21 and 22 (pages 83-94) of the Fiscal Year ended June 30, 2023 ACFR.]

Financial Results – Changes in Net Position

City of Portsmouth, NH Summary of Changes in Net Position (In Thousands)

	Governmental Activities		Business-Type Activities		Total	
	2023	2022	2023	2022	2023	2022
REVENUES						
Program Revenues:						
Charges for Services	\$ 24,423	\$ 23,871	\$ 28,901	\$ 27,080	\$ 53,324	\$ 50,951
Operating Grants and Contributions	20,998	12,126	-	-	20,998	12,126
Capital Grants and Contributions	10,583	3,297	4,731	5,280	15,314	8,577
General Revenues:						
Property Taxes	99,371	97,948	-	-	99,371	97,948
Interest on Taxes	147	169	-	-	147	169
Grants and Contributions (not restricted)	1,939	1,639	-	-	1,939	1,639
Investment Income	3,087	(1,153)	1,305	159	4,392	(994)
Gain (loss) on sale of capital assets			(13)		(13)	-
Other	938	4,523	-	616	938	5,139
Total Revenues	161,487	142,420	34,924	33,135	196,410	175,555
EXPENSES						
General Government	15,741	17,257	-	-	15,741	17,257
Public Safety	24,021	21,771	-	-	24,021	21,771
Education	65,178	60,177	-	-	65,178	60,177
Public Works	24,231	18,139	-	-	24,231	18,139
Health and Human Services	1,003	683	-	-	1,003	683
Culture and Recreation	6,072	4,772	-	-	6,072	4,772
Community Development	970	628	-	-	970	628
Interest on Long-Term Debt	2,950	3,767	-	-	2,950	3,767
Water Operations	-	-	10,298	8,986	10,298	8,986
Sewer Operations	-	-	19,859	17,924	19,859	17,924
Total Expenses	140,166	127,194	30,157	26,910	170,323	154,104
Change in net position before transfers and special items	21,320	15,226	4,767	6,225	26,087	21,451
Transfer in(out)	452	312	(452)	(312)	-	-
Change in net position	21,772	15,538	4,315	5,913	26,087	21,451
Net Position - beginning of year	127,356	111,818	140,456	134,543	267,812	246,361
NET POSITION - END OF YEAR	\$ 149,128	\$ 127,356	\$ 144,771	\$ 140,456	\$ 293,899	\$ 267,812

Statement of Changes in Net Position presents revenues and expenses for the City as a whole and compares the changes in net position for the current and prior fiscal year.

FY23 Total Revenues of \$196.4 Million



Up \$20.8M or 11.9% from FY22

FY23 Total Expenses of \$170.3 Million



Up \$16.2M or 10.5% from FY22

General Fund Revenues

Where does the money come from to fund the General Fund Budget?



Property Taxes
72.36%



Licenses & Permits
5.73%



Intergovernmental
10.83%



Charges for Services
4.67%



Investment Income
1.32%



Interest on Taxes
0.11%



Fines & Costs
0.84%



Other Revenues
0.36%



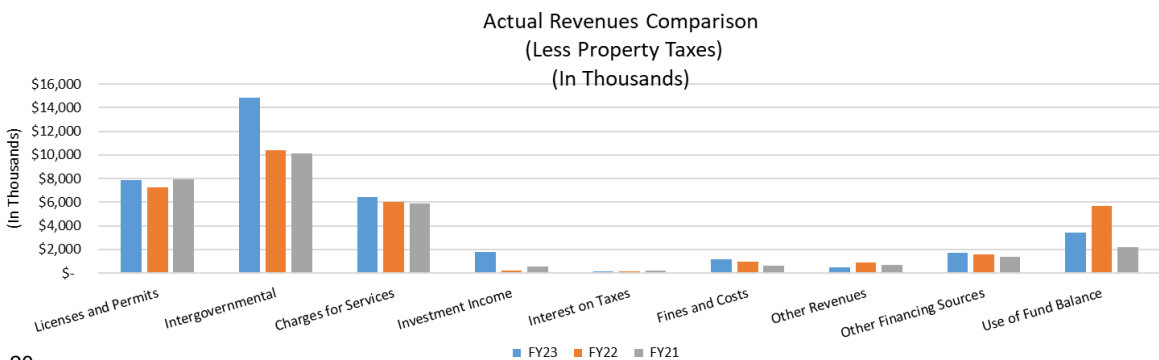
Other Financing Sources
1.27%



Use of Fund Balance
2.51%

General Fund activities are financed by revenues generated from local property taxes, state shared revenues, and other local sources. Actual revenues for FY23, FY22 and FY21 are depicted below.

Revenues	Actual 2023	Actual 2022	Actual 2021
Property taxes	\$ 99,298,398	\$ 95,437,728	\$ 92,170,220
Licenses and permits:			
Motor Vehicles Permits	5,345,495	5,000,874	5,226,849
Building Permits	1,422,567	1,266,473	1,767,842
Cable Franchise Fee	360,000	360,000	360,000
Other Licenses and Permits	728,453	631,257	556,159
Intergovernmental:			
School Building Aid from State	1,757,196	1,757,196	1,757,196
Rooms and Meals Tax from State	2,563,046	1,639,197	1,318,163
Highway Block Grant from State	441,672	426,293	429,034
School Tuition	6,810,047	6,577,471	6,613,787
Adequate Education Grant	3,285,215	-	-
Charges for services:			
PDA Airport District	3,052,158	2,825,878	2,726,229
Police Outside Detail	317,721	413,712	197,714
Ambulance Fees	1,198,254	860,223	935,293
Net Parking Related Revenue	1,203,647	1,366,294	1,789,564
Recreation Department	388,564	218,351	21,482
Other Charges for services	245,309	337,554	206,231
Investment Income:	1,812,447	201,845	526,494
Interest on Taxes:	147,262	168,752	191,444
Fines and Costs	1,159,490	986,490	616,806
Other Revenues:	493,145	907,155	676,400
Other Financing Sources:			
Bond Premium	4,763	132,611	-
Transfer In	1,744,576	1,421,368	1,394,259
Use of Fund Balance:	3,450,000	5,696,000	2,200,000
Total Revenues	\$ 137,229,425	\$ 128,632,721	\$ 121,681,166



General Fund Expenditures

How is the money spent to fund General Fund Services?

Revenues collected from property taxes, state shared revenues and other local revenues are used to fund the General Fund expenditures only. Actual Expenditures for FY23, FY22, and FY21 are depicted below.

Expenditures	Actual FY23	Actual FY22	Actual FY21
Operating Budget			
General Government	\$ 23,271,336	\$ 20,968,405	\$ 20,027,270
Police Department	12,646,674	12,261,722	11,737,056
Fire Department	10,226,092	9,812,552	9,501,041
School Department	57,928,462	53,547,130	52,008,812
Transfers	783,043	327,486	174,344
<i>Total Operating</i>	\$ 104,855,607	\$ 96,917,295	\$ 93,448,523
Non-Operating			
Debt Service	13,712,906	13,639,841	13,231,740
Rockingham County Tax	5,546,962	5,677,887	5,667,030
Capital Outlay	985,000	1,080,000	1,276,000
Other Non-Operating	4,870,510	4,688,498	3,893,367
<i>Total Non-Operating</i>	\$ 25,115,378	\$ 25,086,226	\$ 24,068,137
Total Expenditures	\$129,970,985	\$122,003,521	\$117,516,660

Operating Expenditures represent 80.7% of the total Expenditures



General Government
17.9%



Police Department
9.7%



Fire Department
7.9%



Education K-12
44.6%



Indoor Pool, Community Campus, and Prescott Park Transfers
.6%

Non-Operating Expenditures represents 19.3% of the total Expenditures.



Debt Service
10.5%



Rockingham County Tax
4.3%



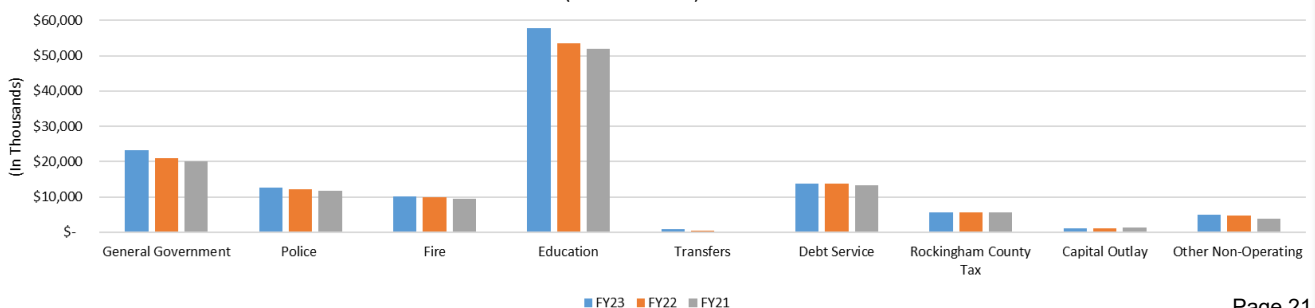
Capital Outlay
.8%



Other Non-Operating
3.7%

- **General Government-** City Council, City Manager, Finance, City Clerk, Elections, Legal, Human Resources, Public Works, Planning & Sustainability, Inspection, Health, Information Technology, Public Library, Recreation, Senior Services, Welfare, Outside Social Services, Economic & Community Development, and Emergency Management
- **Transfers-** Annual transfer for operating expenses for the Indoor Pool, Community Campus, and Prescott Park
- **Debt Service-** Principal and Interest on Long-Term Debt
- **Rockingham County Tax-** Portsmouth's apportionment of the Rockingham County Tax Obligation
- **Other Non-Operating-** Overlay, Capital Outlay, Contingency, IT Equipment Replacement, and Rolling Stock

Actual Expenditures Comparison
(In Thousands)



General Fund – Fund Balance

GENERAL FUND BALANCE SHEET

	2023	2022	2021
Assets:			
Cash and Investments	\$53,126,557	\$55,129,854	\$50,679,739
Receivables:			
Property Taxes	2,104,598	2,386,476	2,382,591
Departmental and other	4,260,209	948,406	3,966,215
Intergovernmental	6,227,737	-	-
Leases	263,215	293,877	-
Due from other funds	2,064,151	1,240,181	1,561,663
Advances to other funds	339,760	385,160	430,160
Other assets	77,564	109,038	79,029
TOTAL ASSETS	\$68,463,791	\$60,492,992	\$59,099,397
LIABILITIES, DEFERRED INFLOWS OF RESOURCES AND FUND BALANCES			
Liabilities:			
Accounts payable	\$ 1,603,635	\$ 1,599,959	\$ 1,721,800
Accrued liabilities	2,065,726	2,862,519	1,590,486
Unearned revenue	-	-	27,933
Tax refunds liability	313,471	1,686,561	5,196,616
Other liabilities	1,190,179	2,388,281	646,827
TOTAL LIABILITIES	5,173,011	8,537,320	9,183,662
Deferred inflows of Resources	7,922,823	1,771,061	1,300,414
Fund Balances:			
Nonspendable	339,760	385,160	430,160
Committed	27,665,287	23,464,101	21,324,259
Assigned	9,194,343	9,178,551	10,496,904
Unassigned	18,168,567	17,156,799	16,363,998
TOTAL FUND BALANCE	55,367,957	50,184,611	48,615,321
TOTAL LIABILITIES, DEFERRED INFLOWS OF RESOURCES AND FUND BALANCE	\$68,463,791	\$60,492,992	\$59,099,397

The General Fund balance sheet is prepared using the modified accrual basis of accounting. There are no long-term assets or liabilities reported on this statement.

Fund Balance is the excess of an entity's assets over its liabilities.

Total Fund Balance of \$55,367,957 or 41.8% of appropriations, represents an increase of \$5,183,346 or 10.3% from prior year.

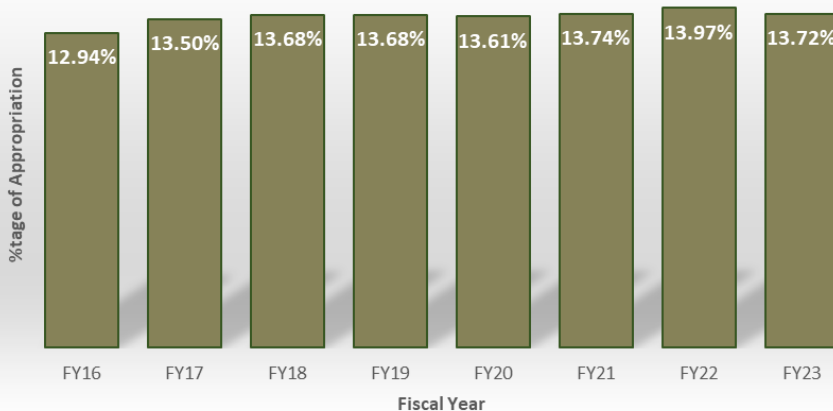
Unassigned Fund Balance Ordinance

The unassigned portion of the fund balance represents available resources that can be spent for future needs.

The City Council adopted in Fiscal Year 1998 the "Unassigned Fund Balance Ordinance." In Fiscal Year 2013, the ordinance was amended mandating that the City will maintain an unassigned fund balance of between 10% and 17% of general fund appropriations.

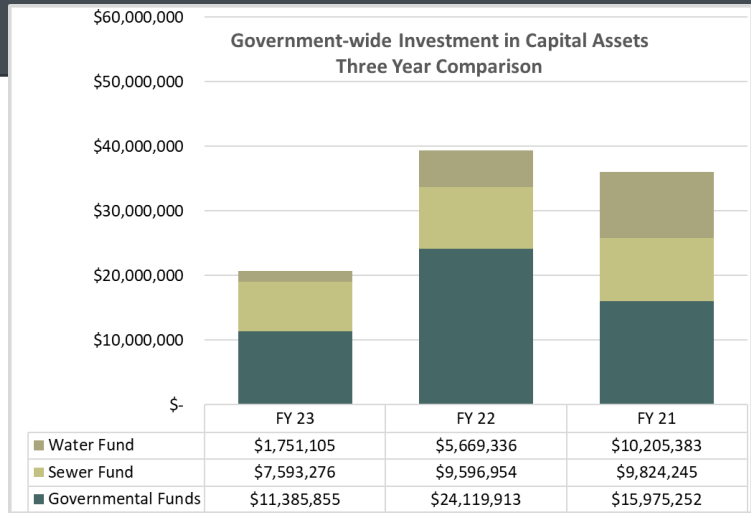
Unassigned fund balance at the end of the fiscal year was \$18,168,568 or 13.72% of the final general fund budget. This is an increase of \$1,011,767 or 5.9% from prior year.

GENERAL FUND - UNASSIGNED FUND BALANCE



Capital Assets

The City invests in capital improvements each year. The chart to the right depicts a 3-year history of capital expenditures to purchase, construct or improve infrastructure Citywide. These projects are funded through annual appropriations, bonds, loans, grants and other capital contributions.



Governmental Activities

Capitalized Assets

- Multi-Purpose playing field
- Cate Street Connector
- Longmeadow Road
- Corporate Drive
- Banfield Road Culvert and Pedestrian accommodations
- City Hall improvements
- Police Station improvements

Water Fund Activities

Capitalized Assets

- Pease Water Treatment building and equipment
- Madbury Water Treatment Facility
- Madbury Well
- Peirce Island force main
- State Street, Sagamore Avenue, Maplewood Avenue waterline replacements

Sewer Fund Activities

Capitalized Assets

- Mechanic Street force main
- Peirce Island force main

Long-term Debt

STANDARD & POOR'S

PORTSMOUTH IS A "AAA" BOND RATED COMMUNITY

In June 2023, Standard & Poor's Rating Group (S&P) affirmed the City's AAA bond rating for the thirteenth consecutive time.

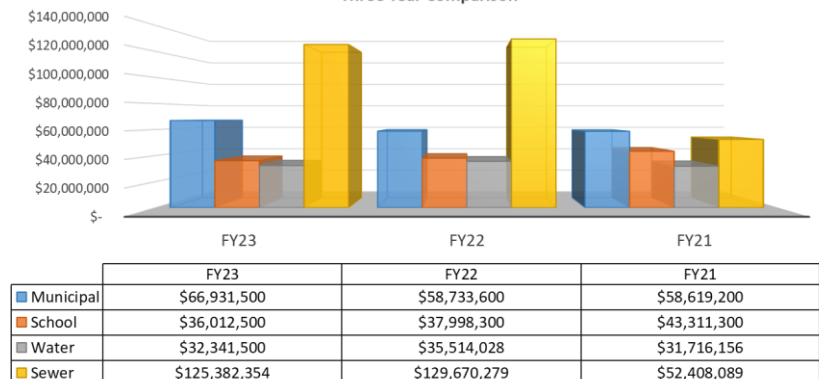
A bond rating is a grade given to bonds issued that indicates a community's credit worthiness, similar to your own personal credit score.

A "AAA" rating represents the highest credit rating available and translates to significant savings to you as the taxpayer through reduced interest rates on bonds which funds major capital projects.

At the end of FY23, debt for Governmental activity totaled \$260.6 Million (excluding unamortized premiums). This represents a reduction of \$1.25 million from last year's total debt of \$261.9 million. The net decrease is primarily attributable to:

- Reduction of outstanding debt principal of \$22 million
- Issuance of General Obligation (GO) bonds of \$20.7 million

**General Obligation Bonds and State Revolving Loans Outstanding
Three Year Comparison**





Enterprise Funds – Water & Sewer Funds

An Enterprise Fund establishes a separate accounting and financial reporting mechanism for municipal services for which a fee is charged in exchange for goods and/or services to the public. The City of Portsmouth has two Enterprise Funds: Water Fund and Sewer Fund and each are accounted for separately.

How is my water & sewer rate established?

The City’s water and sewer rate structure is a two-tiered inclining rate, meaning the first 10 units (a unit of 100 cubic feet of water or 748 gallons) of water consumed each month is billed using one rate, and water consumed greater than 10 units per month is billed at a higher rate. Since the large volume users have a greater impact on the water system, a second tier at the higher rate captures the additional costs incurred to serve them.

Does the City allow for Irrigation Meters?

YES!

The City allows for irrigation meters for both residential and commercial customers on a three-tiered inclining rate basis. Please call Public Works at (603) 766-1443 for more information.



What is the meter charge on my monthly bill?

The monthly meter charge is for ongoing maintenance and service of meters installed on the property and is based on the service size. The typical residential meter is 5/8” and is \$4.95/month.



Did you know the City offers Water & Sewer Assistance Programs

The City offers Water and Sewer payment assistance for qualifying customers who are residential homeowners or tenants. Information regarding these programs can be found on the City’s Website at <https://www.cityofportsmouth.com/public-works/water-and-sewer-assistance-programs> or call our billing department at (603) 610-7248 or (603) 610-7237.

FY23 WATER RATE

Consumption per month

1st Tier Rate (10 units or less)	\$4.54
2 nd Tier Rate (over 10 units)	\$5.46

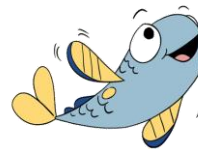
Irrigation Meter Consumption Rates

1st Tier Rate [0-10 units]	\$5.46
2 nd Tier Rate [11-20 units]	\$10.30
3 rd Tier Rate [over 20 units]	\$12.71

FY23 SEWER RATES

Sewer rates are based on water consumption per month.

1 st Tier Rate (10 units or less)	\$15.78
2 nd Tier Rate (over 10 units)	\$17.36



Did you know the City offers new toilet and washing machine rebates for qualifying appliances? - For more information visit <https://www.cityofportsmouth.com/publicworks/residential-toilet-and-washing-machine-rebate-program-additional-information>



Enterprise Funds – Water & Sewer Funds

The Water and Sewer funds are reported on the proprietary fund financial statements and use the full accrual basis of accounting similar to the private sector. Each report equity as net position. The Statement of Revenues, Expenses, and Changes in Net Position for FY23 and FY22 is displayed below for comparison.

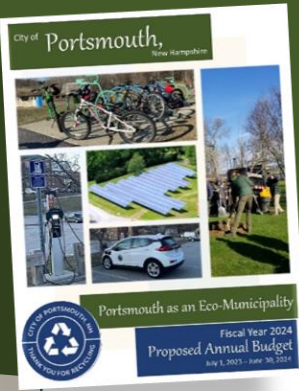


CITY OF PORTSMOUTH, NEW HAMPSHIRE
 PROPRIETARY FUNDS
 STATEMENT OF REVENUES, EXPENSES, AND CHANGES IN NET POSITION

	Water 2023	Water 2022	Sewer 2023	Sewer 2022	Total 2023	Total 2022
Operating Revenues:						
Charges for services	\$ 9,056,883	\$ 8,445,746	\$ 18,121,938	\$ 16,907,554	\$ 27,178,821	\$ 25,353,300
Licenses and permits	1,158,020	1,071,703	138,241	151,835	1,296,261	1,223,538
Department revenue	230,101	207,715	196,185	202,198	426,286	409,913
Other revenue	-	42,450	-	51,195		
Total Operating Revenues	10,445,004	9,767,614	18,456,364	17,312,782	28,901,368	26,986,751
Operating Expenses:						
Personnel services	2,767,375	3,584,565	3,963,314	4,293,254	6,730,689	7,877,819
Non-personnel services	3,928,740	2,063,640	7,745,045	5,415,543	11,673,785	7,479,183
Depreciation	2,573,747	2,202,290	5,035,803	5,047,923	7,609,550	7,250,213
Total Operating Expenses	9,269,862	7,850,495	16,744,162	14,756,720	26,014,024	22,607,215
Operating Income	1,175,142	1,917,119	1,712,202	2,556,062	2,887,344	4,473,181
Non-operating Revenues (Expenses):						
Intergovernmental revenues	-	-	3,564,327	-	3,564,327	-
Investment income	365,670	38,845	939,710	120,204	1,305,380	159,049
Bond amortization	245,204	218,174	332,469	398,087	577,673	616,261
Interest expense	(1,273,562)	(1,135,890)	(3,447,705)	(3,167,930)	(4,721,267)	(4,303,820)
Loss on disposal of capital assets	-	-	(13,388)	-	(13,388)	-
Total Non-operating Revenues (Expenses)	(662,688)	(878,871)	1,375,413	(2,649,639)	712,725	(3,528,510)
Income Before Contributions and Transfers	512,454	1,038,248	3,087,615	(93,577)	3,600,069	944,671
Capital contributions	1,035,778	460,641	131,175	4,819,279	1,166,953	5,279,920
Transfer out			(451,789)	(311,993)	(451,789)	(311,993)
Change in Net Position	1,548,232	1,498,889	2,767,001	4,413,709	4,315,233	5,912,598
Net Position at Beginning of Year	61,538,760	60,039,871	78,917,294	74,503,585	140,456,054	134,543,456
Net Position at End of Year	\$ 63,086,992	\$ 61,538,760	\$ 81,684,295	\$ 78,917,294	\$ 144,771,287	\$ 140,456,054

The total net position for the Water and Sewer Funds at the end of the year increased by \$4.3 million for a total of \$144.8 million. The Water Fund increased by \$1.5 million, and the Sewer Fund increased by \$4.4 million. Key elements of the changes include:

- Operating revenues over operating expenses of \$2.9 million represent a decrease of \$1.6 million from the prior year. Charges for services in the business-type activities experienced an increase of \$1.8 million. The Water Fund experienced an increase in operating revenues of \$677,390 or 7% and the Sewer Fund experienced an increase in operating revenues of \$1,143,582 or 6.7%, both primarily as a result of rate increases.
- Non-operating revenues of \$5.5 million represent an increase of \$4.7 million primarily due to an increase in investment interest rates and a first-year payment of a 30-year State Aid Grant (SAG) for the Peirce Island Waste Water Treatment Facility (PIWWTF) State Revolving Fund (SRF) Loan.
- Non-operating interest expense increased by \$4,174,447 to \$4.7 million.
- Capital contributions and intergovernmental revenues decreased \$548,640 from prior year primarily from the one-time principal forgiveness in FY22 of \$4.1 million and the first year of the PIWWTF SAG of \$2.2 million in FY23.



Next Year's FY24 Budgets

At the time of publication of the PAFR for year ending June 30, 2023, Fiscal Year 2024 is underway, and the budget document is available for review at the Public Library, City Clerk's office as well as on the City's website. The document describes the strategy implemented to continue the services, critical infrastructure needs, and fiscal stability of the City.

General Fund Fiscal Year 2024 Budget

Operating Budget

General Government	25,761,257
Police Department	13,959,993
Fire Department	11,243,307
School Department	60,680,961
Transfers to Other Funds	920,094
Total Operating	\$112,565,612

Non-Operating

Debt Service	13,180,206
Rockingham County Tax	5,730,000
Capital Outlay	1,820,000
McIntyre Settlement	500,000
Legal Fees	450,000
Other Non-Operating	4,377,557
Total Non-Operating	\$26,057,763

Total Annual Budget \$138,623,375

Tax Rate

The tax rate approved by the Department of Revenue Administration is \$16.13 per \$1,000 of assessed value.

\$16.13
93¢
(6.1%)

Water and Sewer Rates

Both the Water and Sewer Division user rates have been set based on a two-tier inclining rate block structure based on units of water consumed. One unit is equal to 100 cubic feet or 74.8 gallons of water.



The FY24 water user rates reflect a 4.5% increase from FY23.

First 10 units of water consumed per month increased from \$4.54 to \$4.74.

Over 10 units per month increased from \$5.46 to \$5.70.



The FY24 irrigation rates are based on a three-tier inclining rate structure.

- First 10 units of water consumed \$5.70/unit
- 10 units up to 20 units consumed \$10.76/unit
- Above 20 units consumed \$13.28/unit



The FY24 sewer user rates reflect a 4.5% increase from the FY23 rates.

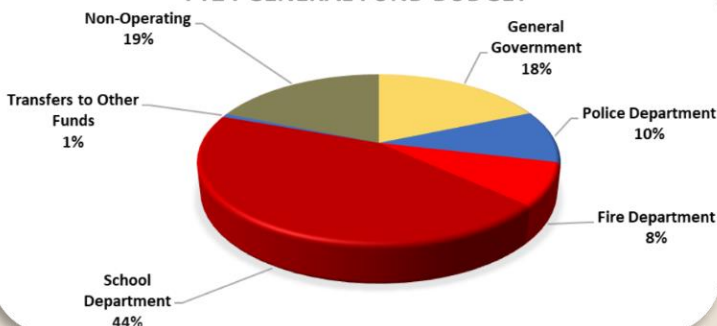
First 10 units of water consumed per month increased from \$15.78 to \$16.49.

Over 10 units per month increased from \$17.36 to \$18.14 per unit.

The FY24 General Fund Final Budget of \$138,623,375 includes two supplemental appropriations:

- \$890,000 for Collective Bargaining; and
- \$450,000 for Outside Legal Counsel.

FY24 GENERAL FUND BUDGET



Did you know . . .

? You can donate funds to a City Project?

Go to the City's Website <https://www.cityofportsmouth.com/city/pay-my-bill> to donate, or scan a QR code below with your mobile phone.



Skateboard Park

City Cemetery Improvements



Portsmouth Public Library



Community Education Scholarships

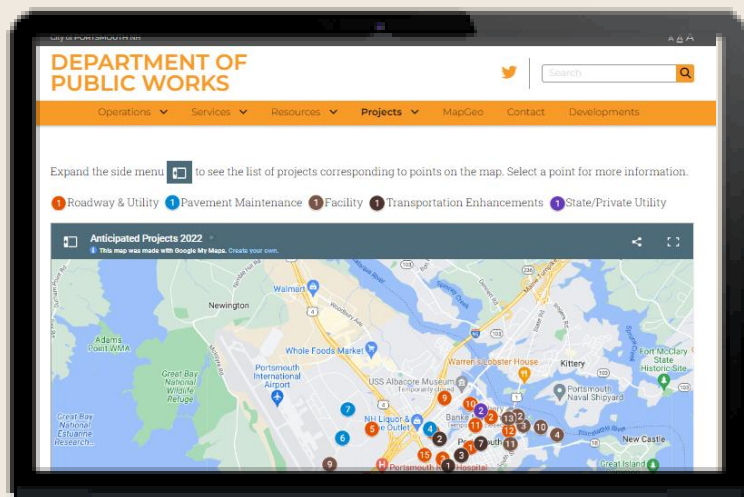


? The City has a webpage dedicated to providing the public information about City Projects?

You can find the Project Page on the City's Department of Public Works Page on the City's Website. <https://www.cityofportsmouth.com/publicworks/projects>

City projects in progress are listed as well as additional project information including:

- Project Description
- Project Status
- Designer
- City Staff Contact
- Unique Project Webpage Address



Download City Apps



Portsmouth Click N' Fix

Connect with the Public Works Department, send images, report issues, and more!

ParkMobile

View parking amenities and pay for parking (as well as feed the meter) all from your cell phone. **Residents get a discount when using the Park Mobile App!!**

ChargePoint Mobile App

The ChargePoint App helps the user find and utilize City ChargePoint EV Charging Stations.

Dockwa

Find and reserve available Prescott Park dock spaces online.

Libby and Hoopla

Explore Library Apps that allow you to download ebooks, audio, and magazines.

Smart911

This allows for Citywide Emergency alerts including snow parking bans.

For the most up-to-date list of resources to connect with the City of Portsmouth, visit: <https://portsnh.co/connect>



Visit CityofPortsmouth.com to:

- ✓ Pay your [Parking Ticket](#), [Water/ Sewer Bill](#), [Property Tax Bill](#), and more;
- ✓ Renew your [Motor Vehicle Registration](#);
- ✓ Register or Renew your [Dog License](#);
- ✓ Utilize [City Project Pages](#) to find information and sign up for email notices on individual projects;
- ✓ Get a City permit online with [ViewPoint Cloud Permits](#);
- ✓ Research property values through the [Vision Software system](#);
- ✓ View 3D maps of the City through [MapGeo](#);
- ✓ Sign up for the [City's Newsletter](#); and
- ✓ Send questions by email to: hotline@cityofportsmouth.com

Follow City Departments on Social Media

For up-to-date information on Citywide happenings (Road closures, recreation programs, parking information, snow bans, and more) follow City Departments on Social Media:



Facebook

- ✓ City Hall: [@cityhallportsmouthnh](#)
- ✓ Fire Department: [@portsmouthnhfiredepartment](#)
- ✓ Portsmouth Public Library: [@pplnh](#)
- ✓ Police Department: [@portsmouthnhpd](#)
- ✓ Recreation Department: [@portsmouthnhrec](#)
- ✓ Schools: [@PortsmouthSD](#)



X (Twitter)

- ✓ City of Portsmouth: ([@MuniPortsmouth](#))
- ✓ Police Department: ([@portsmouthnhpd](#))
- ✓ Fire Department: ([@portsmouthnhfd](#))
- ✓ Park Portsmouth: ([@ParkPortsmouth](#))
- ✓ Public Works Department: ([@PortsmouthDPW](#))
- ✓ Recreation Department: ([@PortsmouthRec](#))
- ✓ Portsmouth Schools: ([@portsschools](#))
- ✓ Planning Department ([@PlanPortsmouth](#))
- ✓ Portsmouth Public Library: ([@PortsmouthLibNH](#))



Instagram

- ✓ City of Portsmouth: [@cityofportsmouth](#)
- ✓ Public Works Department: [@portsmouthnhdpw](#)
- ✓ Stormwater Division: Think Blue Portsmouth, NH [@thinkblueportsmouthnh](#)
- ✓ Portsmouth Public Library: [@Portsmouthpubliclibrary](#)
- ✓ Park Portsmouth: [@Park_portsmouthnh](#)



Threads

- ✓ City of Portsmouth: [@cityofportsmouth](#)



Watch City Meetings LIVE from anywhere (plus recent or archived City Meetings) on the [City's YouTube Channel](#) <https://www.youtube.com/user/CityofPortsmouth> and TV Channel 22.

Contact Us

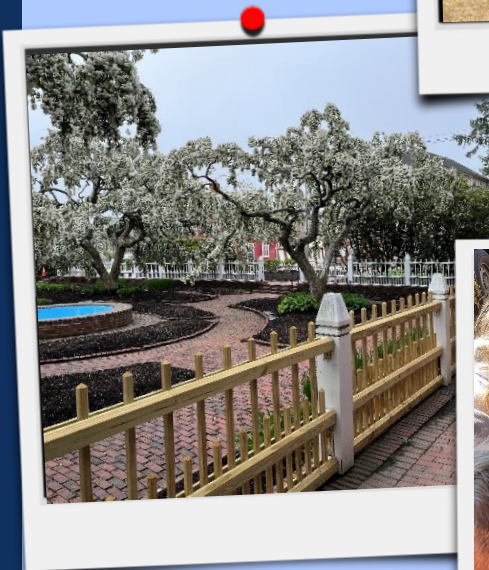
Name/ Department	Telephone Number	Primary Location
Portsmouth City Hall (Switchboard)	603-431-2000	Portsmouth City Hall 1 Junkins Ave Portsmouth, NH 03801
Mayor	603-610-7200	Portsmouth City Hall
City Manager	603-610-7202	Portsmouth City Hall
Deputy City Manager	603-610-7297	Portsmouth City Hall
Finance Department Director of Finance and Administration Accounts Payable Purchasing Tax Collector City Assessor	603-610-7223 603-610-7839 603-610-1712 603-610-7244 603-610-7249	Portsmouth City Hall
Portsmouth Public Works	603-427-1530	Public Works Building 680 Peverly Hill Road Portsmouth, NH 03801
Portsmouth Police Department	Emergency – 911 Non-Emergency 603-427-1500	Portsmouth Police Department 3 Junkins Avenue Portsmouth, NH 03801
Portsmouth Fire Department	Emergency – 911 Non-Emergency 603-427-1515	Portsmouth Fire Department – Station 1 170 Court Street Portsmouth, NH 03801
Portsmouth Public Library	603-427-1540	Portsmouth Public Library 175 Parrott Avenue Portsmouth, NH 03801
Portsmouth School Department	603-431-5080	Portsmouth School Department 1 Junkins Avenue Portsmouth, NH 03801
City Clerk's Office	603-610-7245	Portsmouth City Hall
Health Department	603-610-7273	Portsmouth City Hall
Inspection Department	603-610-7243	Portsmouth City Hall
Planning Department	603-610-7296	Portsmouth City Hall
Human Resources	603-610-7270	Portsmouth City Hall
Legal Department	603-610-7204	Portsmouth City Hall
Recreation Department	603-766-1483	Connie Bean 155 Parrott Avenue Portsmouth, NH 03801
Senior Services	603-610-4433	Portsmouth Senior Activity Center 125 Cottage Street Portsmouth, NH 03801
Welfare	603-610-7267	Portsmouth City Hall



Happy 400th Birthday, Portsmouth!

In FY2023, the City celebrated its 400th Birthday. Check out photos from the festivities on the Portsmouth, NH 400th Website:
<https://www.portsmouthnh400.org/>





2023
Popular Annual Financial Report
Fiscal Year Ended June 30, 2023