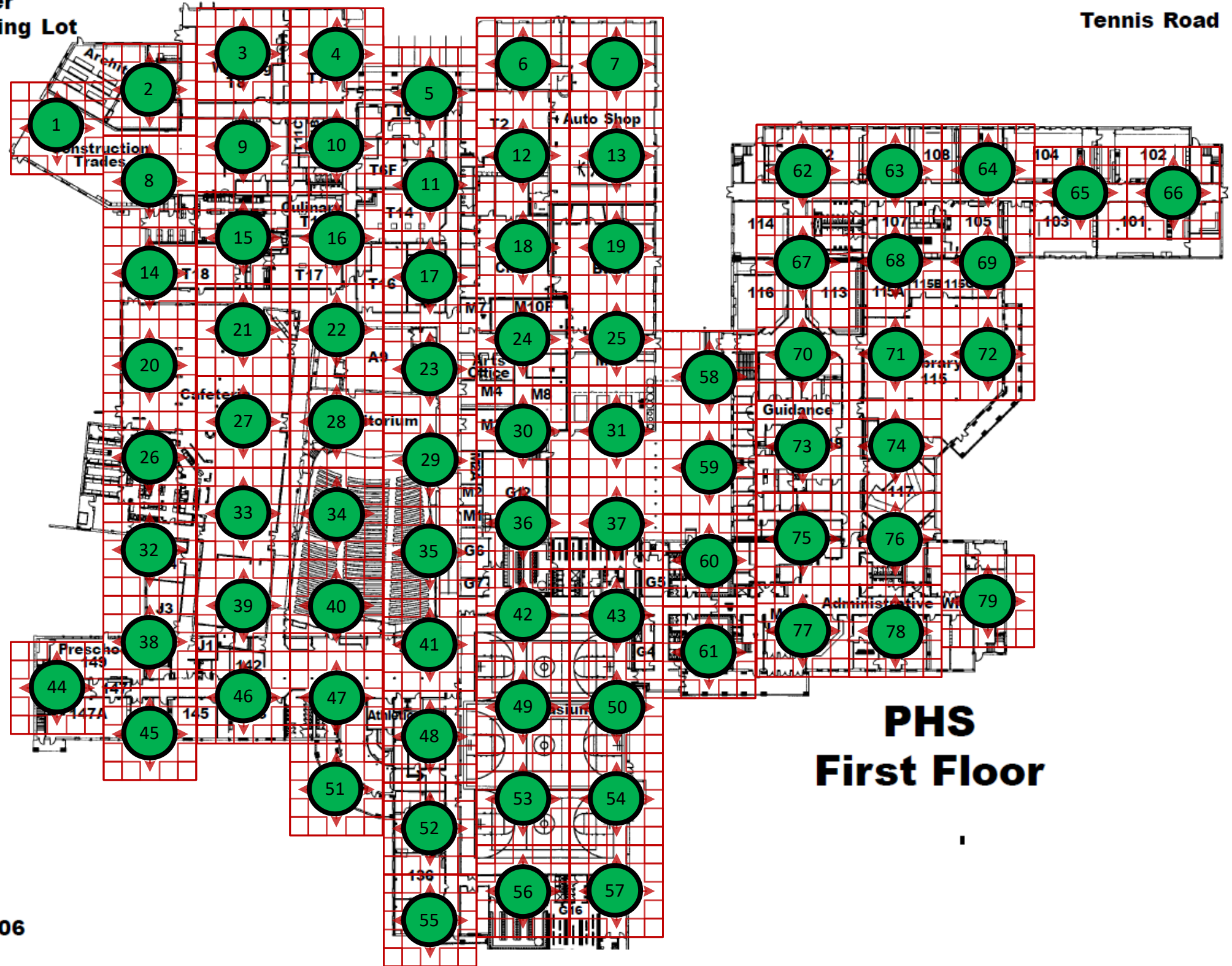


Upper Parking Lot

Tennis Road



# CITY OF PORTSMOUTH IN BUILDING RF TEST PLAN

FIRST FLOOR

50 ANDREW JARVIS DR  
PORTSMOUTH, NH 03801

TEST DATE:  
TECH:

## PASS

POLICE DOWNLINK 154.740  
UPLINK 155.985

ROOF SAMPLE:

FIRE DOWNLINK 154.340  
UPLINK 158.805

ROOF SAMPLE:

\*ALL DOWNLINK TEST READINGS ARE IN dB  
ALL UPLINK TEST READINGS ARE IN DAQ  
DOWNLINK READINGS AT OR BELOW -95dB FAIL MINIMUM SIGNAL TEST  
UPLINK READINGS AT OR BELOW 3.4 FAIL MINIMUM SIGNAL TEST



2-Way Communications Service, Inc. Confidential Proprietary  
System drawings may not be reproduced, copied or utilized without  
written permission.

11/1/06

Measurement Example:

Receive signal strength (dB) -94  
Outbound signal quality 4

\*No signal received is marked with an X.

Delivered Audio Quality Scale

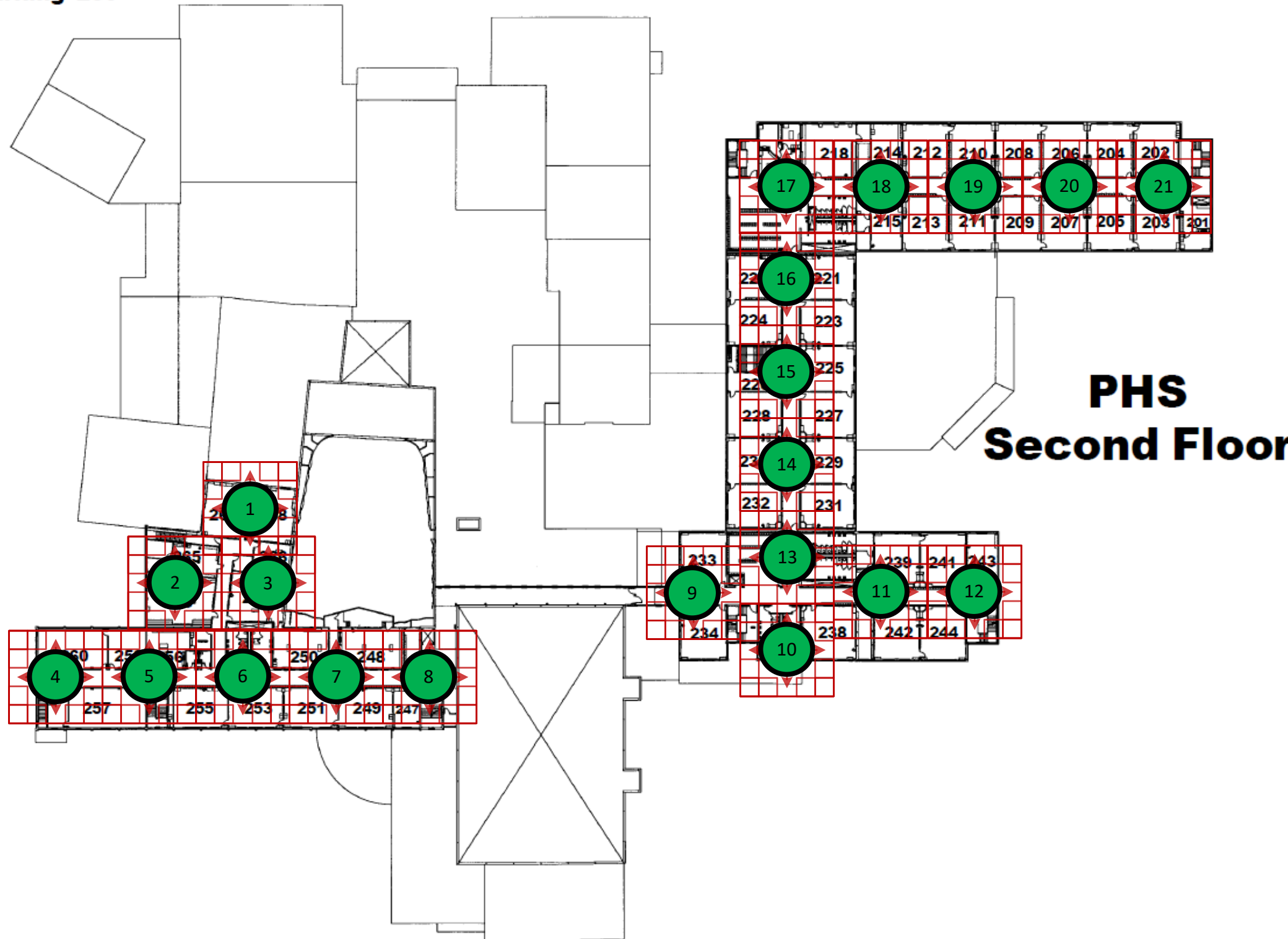
- 0 – Speech not present
- 1 – Unusable, Speech present but unreadable
- 2 – Understandable with considerable effort. Frequent repetition due to Noise/Distortion
- 3 – Speech understandable with slight effort. Occasional repetition due to Noise/Distortion
- 3.4 – Speech understandable without repetition. Some Noise/Distortion
- 4 – Speech easily understood. Occasional Noise/Distortion
- 4.5 – Speech easily understood. Infrequent Noise/Distortion
- 5 – Speech easily understood

Test Parameters

Signal levels >-90, include one sample per sector  
Signal levels <-90, include one sample per quadrant

Upper  
Parking Lot

Tennis Road



**PHS  
Second Floor**

**CITY OF PORTSMOUTH  
IN BUILDING RF TEST  
PLAN**

SECOND FLOOR

50 ANDREW JARVIS DR  
PORTSMOUTH, NH 03801

TEST DATE:  
TECH:

**PASS**

POLICE DOWNLINK 154.740  
UPLINK 155.985

ROOF SAMPLE:

FIRE DOWNLINK 154.340  
UPLINK 158.805

ROOF SAMPLE:

\*ALL DOWNLINK TEST READINGS ARE IN dB  
ALL UPLINK TEST READINGS ARE IN DAQ  
DOWNLINK READINGS AT OR BELOW -95dB FAIL MINIMUM SIGNAL TEST  
UPLINK READINGS AT OR BELOW 3.4 FAIL MINIMUM SIGNAL TEST



Measurement Example:

Receive signal strength (dB) -94  
Outbound signal quality 4

\*No signal received is marked with an X.

Delivered Audio Quality Scale

- 0 – Speech not present
- 1 – Unusable, Speech present but unreadable
- 2 – Understandable with considerable effort. Frequent repetition due to Noise/Distortion
- 3 – Speech understandable with slight effort. Occasional repetition due to Noise/Distortion
- 3.4 – Speech understandable without repetition. Some Noise/Distortion
- 4 – Speech easily understood. Occasional Noise/Distortion
- 4.5 – Speech easily understood. Infrequent Noise/Distortion
- 5 – Speech easily understood

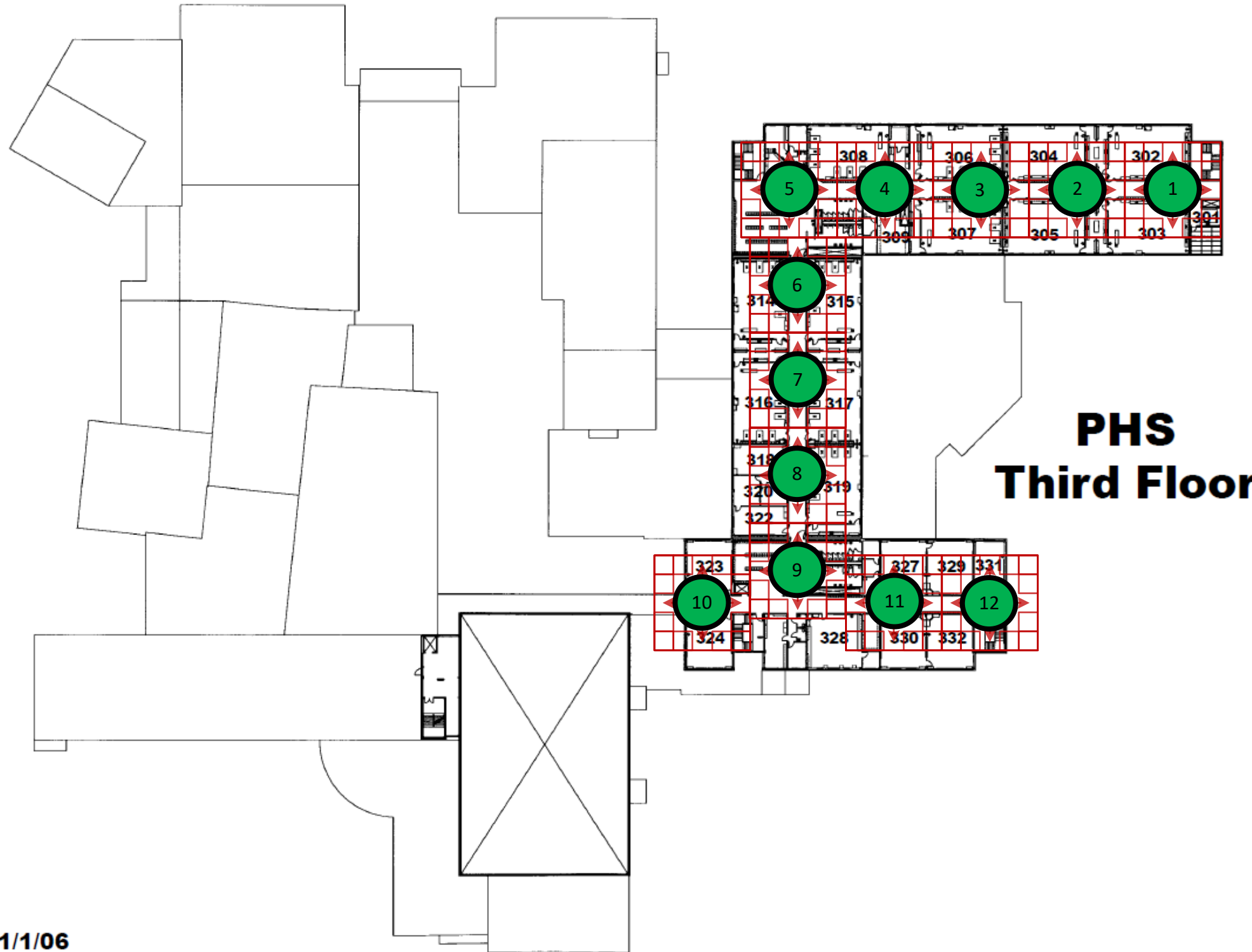
Test Parameters

Signal levels >-90, include one sample per sector  
Signal levels <-90, include one sample per quadrant

2-Way Communications Service, Inc. Confidential Proprietary  
System drawings may not be reproduced, copied or utilized without  
written permission.

Upper  
Parking Lot

Tennis Road



# PHS Third Floor

## CITY OF PORTSMOUTH IN BUILDING RF TEST PLAN

THIRD FLOOR

50 ANDREW JARVIS DR  
PORTSMOUTH, NH 03801

TEST DATE:  
TECH:

# PASS

POLICE DOWNLINK 154.740  
UPLINK 155.985

ROOF SAMPLE:

FIRE DOWNLINK 154.340  
UPLINK 158.805

ROOF SAMPLE:

\*ALL DOWNLINK TEST READINGS ARE IN dB  
ALL UPLINK TEST READINGS ARE IN DAQ  
DOWNLINK READINGS AT OR BELOW -95dB FAIL MINIMUM SIGNAL TEST  
UPLINK READINGS AT OR BELOW 3.4 FAIL MINIMUM SIGNAL TEST



2-Way Communications Service, Inc. Confidential Proprietary  
System drawings may not be reproduced, copied or utilized without  
written permission.

11/1/06

### Measurement Example:

Receive signal strength (dB) -94  
Outbound signal quality 4

\*No signal received is marked with an X.

### Delivered Audio Quality Scale

- 0 – Speech not present
- 1 – Unusable, Speech present but unreadable
- 2 – Understandable with considerable effort. Frequent repetition due to Noise/Distortion
- 3 – Speech understandable with slight effort. Occasional repetition due to Noise/Distortion
- 3.4 – Speech understandable without repetition. Some Noise/Distortion
- 4 – Speech easily understood. Occasional Noise/Distortion
- 4.5 – Speech easily understood. Infrequent Noise/Distortion
- 5 – Speech easily understood

### Test Parameters

Signal levels >-90, include one sample per sector  
Signal levels <-90, include one sample per quadrant