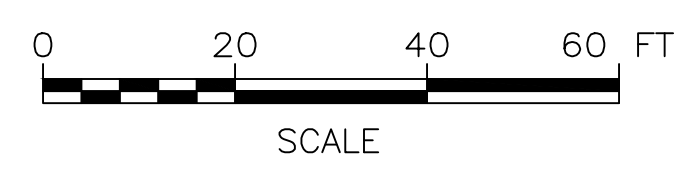
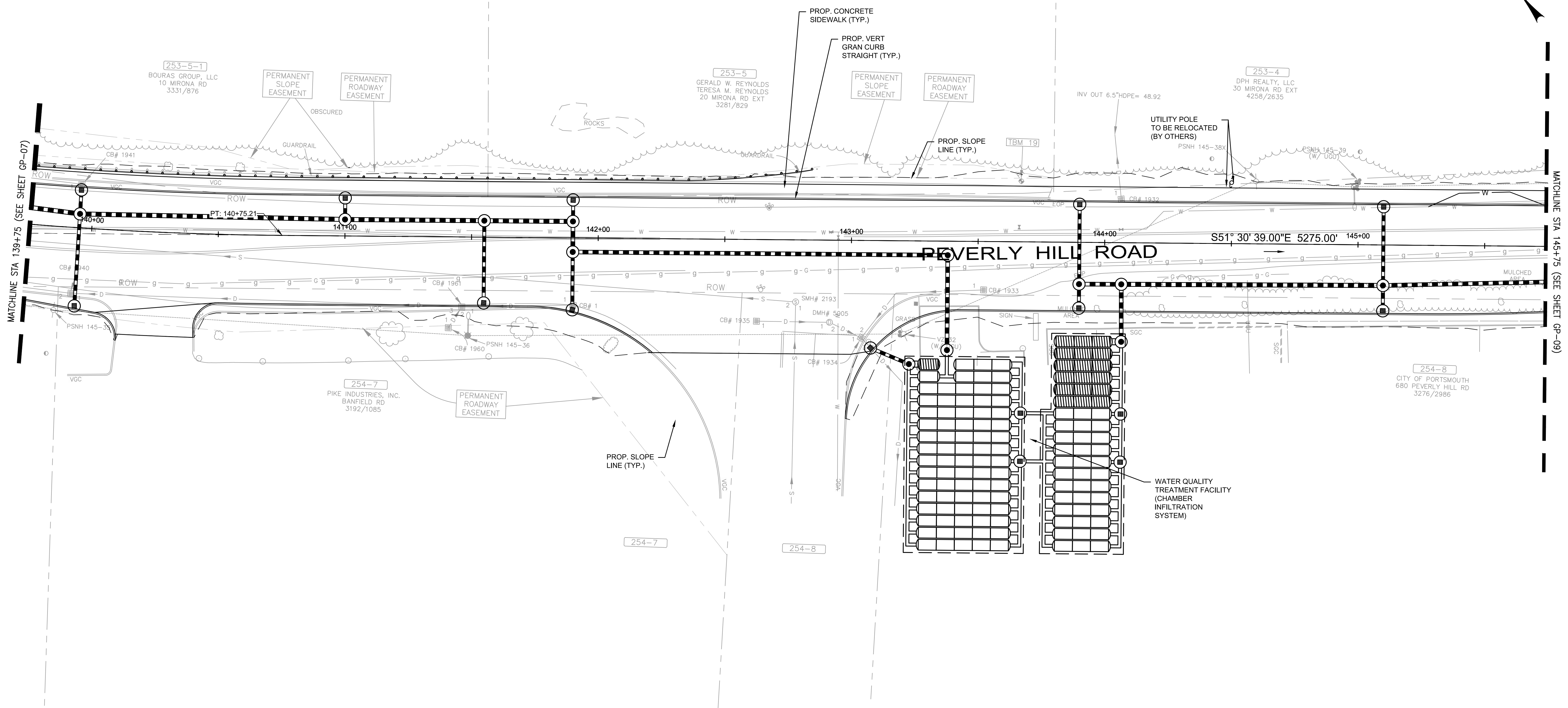
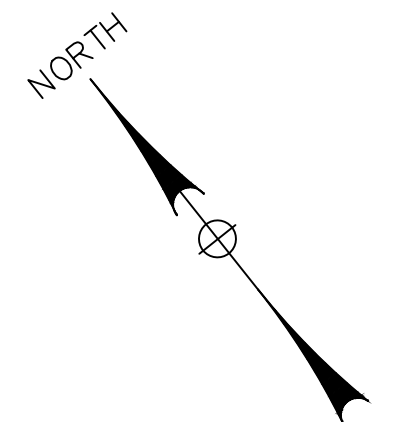


PRELIMINARY PLANS

IT IS A VIOLATION OF LAW FOR ANY PERSON, UNLESS THEY ARE ACTING UNDER THE DIRECT DIRECTION OF A LICENSED PROFESSIONAL ENGINEER, ARCHITECT, LANDSCAPE ARCHITECT, OR LAND SURVEYOR, TO ALTER AN ITEM IN ANY WAY. IF AN ITEM BEARING THE STAMP OF A LICENSED PROFESSIONAL IS ALTERED, THE ALTERING ENGINEER, ARCHITECT, LANDSCAPE ARCHITECT, OR LAND SURVEYOR SHALL STAMP THE DOCUMENT AND INCLUDE THE NOTATION "ALTERED BY" FOLLOWED BY THEIR SIGNATURE, THE DATE OF SUCH ALTERATION, AND A SPECIFIC DESCRIPTION OF THE ALTERATION.


McFarland Johnson
 53 REGIONAL DRIVE
 CONCORD, NH 03301

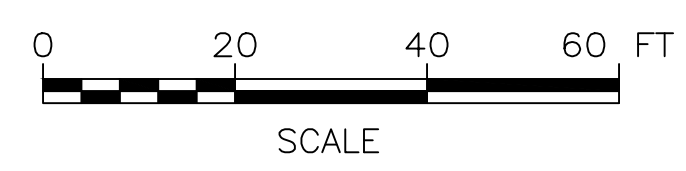
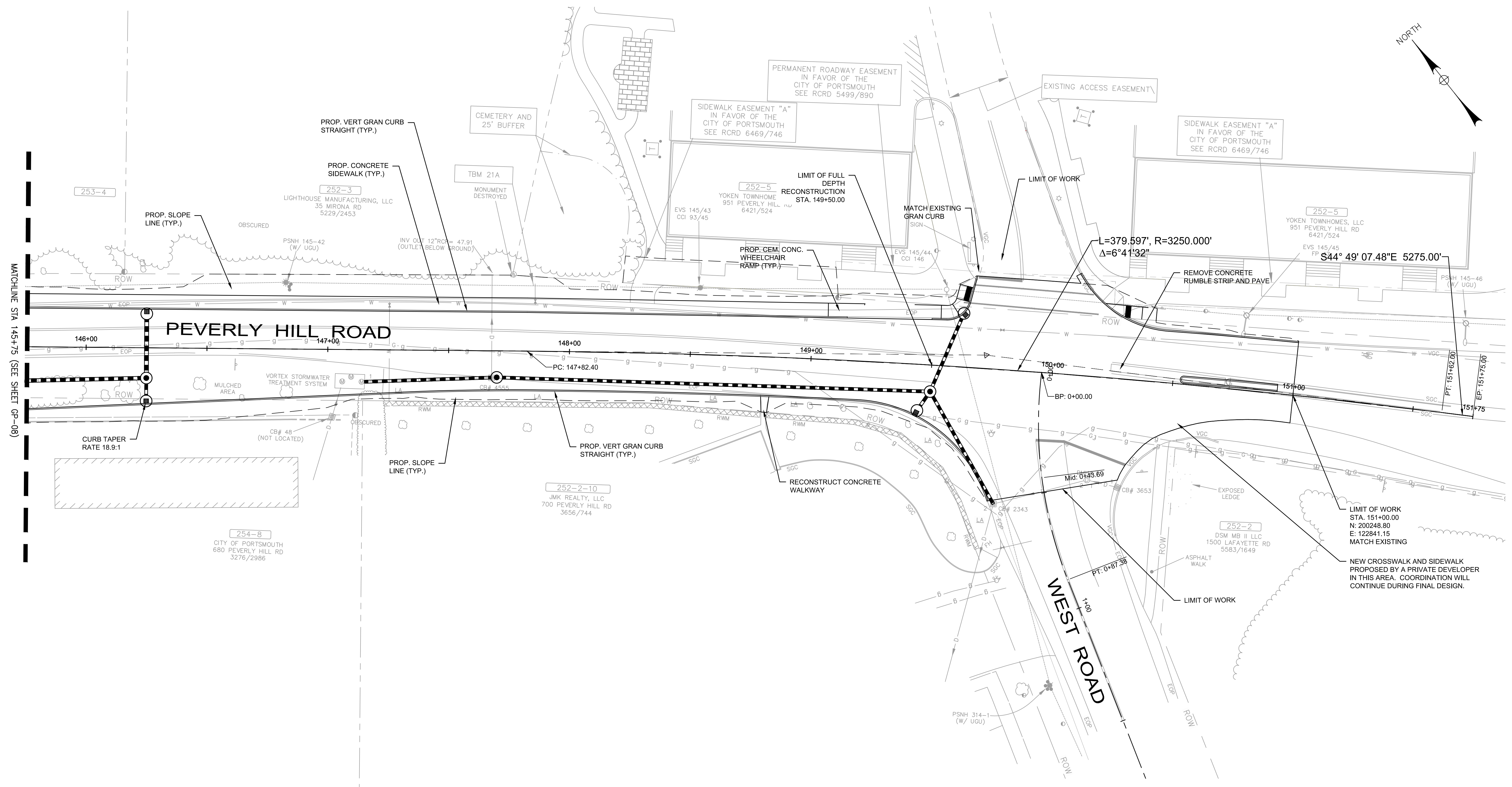
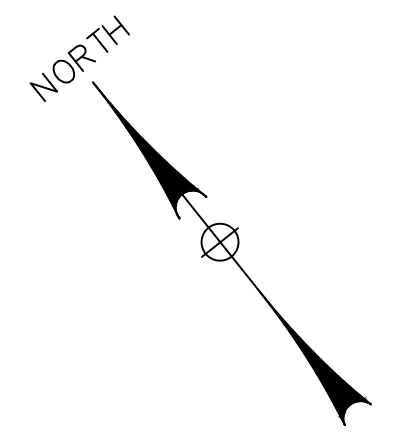
CITY OF PORTSMOUTH			
CITY OF PORTSMOUTH, NEW HAMPSHIRE			
PEVERLY HILL ROAD RECONSTRUCTION			
GENERAL PLAN (SHEET 7 OF 10)			
SCALE:	AS SHOWN	DESIGN:	MAH
DRAWN:	MJF	PROJECT:	18082.01
CHECKED:	BRC	DATE:	06/04/2024
			GP-07 9 OF 72



PRELIMINARY PLANS

IT IS A VIOLATION OF LAW FOR ANY PERSON, UNLESS THEY ARE ACTING UNDER THE DIRECT DIRECTION OF A LICENSED PROFESSIONAL ENGINEER, ARCHITECT, LANDSCAPE ARCHITECT, OR LAND SURVEYOR, TO ALTER AN ITEM IN ANY WAY. IF AN ITEM BEARING THE STAMP OF A LICENSED PROFESSIONAL IS ALTERED, THE ALTERING ENGINEER, ARCHITECT, LANDSCAPE ARCHITECT, OR LAND SURVEYOR SHALL STAMP THE DOCUMENT AND INCLUDE THE NOTATION "ALTERED BY" FOLLOWED BY THEIR SIGNATURE, THE DATE OF SUCH ALTERATION, AND A SPECIFIC DESCRIPTION OF THE ALTERATION.

CITY OF PORTSMOUTH CITY OF PORTSMOUTH, NEW HAMPSHIRE			
PEVERLY HILL ROAD RECONSTRUCTION			
GENERAL PLAN (SHEET 8 OF 10)			
REV	DATE	DESCRIPTION	BY
 McFarland Johnson 53 REGIONAL DRIVE CONCORD, NH 03301		SCALE: AS SHOWN DRAWN: M.J.F. CHECKED: BRC	DESIGN: MAH PROJECT: 18082.01 DATE: 06/04/2024 GP-08 10 OF 72



PRELIMINARY PLANS

IT IS A VIOLATION OF LAW FOR ANY PERSON, UNLESS THEY ARE ACTING UNDER THE DIRECT DIRECTION OF A LICENSED PROFESSIONAL ENGINEER, ARCHITECT, LANDSCAPE ARCHITECT, OR LAND SURVEYOR, TO ALTER AN ITEM IN ANY WAY. IF AN ITEM BEARING THE STAMP OF A LICENSED PROFESSIONAL IS ALTERED, THE ALTERING ENGINEER, ARCHITECT, LANDSCAPE ARCHITECT, OR LAND SURVEYOR SHALL STAMP THE DOCUMENT AND INCLUDE THE NOTATION "ALTERED BY" FOLLOWED BY THEIR SIGNATURE, THE DATE OF SUCH ALTERATION, AND A SPECIFIC DESCRIPTION OF THE ALTERATION.

CITY OF PORTSMOUTH			
CITY OF PORTSMOUTH, NEW HAMPSHIRE			
PEVERLY HILL ROAD RECONSTRUCTION			
GENERAL PLAN (SHEET 9 OF 10)			
REV	DATE	DESCRIPTION	BY
McFarland Johnson 53 REGIONAL DRIVE CONCORD, NH 03301		SCALE: AS SHOWN DRAWN: M.J.F. CHECKED: BRC	DESIGN: MAH PROJECT: 18082.01 DATE: 06/04/2024 GP-09 11 OF 72