

October 15, 2013

ADDENDUM #2

**Prescott Park Pavilion Building 2013
Bid Proposal #18-14**

This Addendum forms part of the original document marked: Bid #18-14 Prescott Park Pavilion Building 2013.

- **The bid opening date has been changed to October 17, 2013 @ 1:30 p.m.**
- **Attached is drawing T3.**
- **The following questions have been asked and answered.**

- 1) Is the unisex bathroom to be room 109 or 108? T3 shows it as 109 and the stair as 108. A1 shows unisex bathroom 108 and stair 108?

Room numbers are as follows: Stair 108, Unisex Bathroom 109

- 2) There is no finish schedule on T3 for unisex bathroom 109. Should the finishes be the same as mens room 106?

Please see attached revised Sheet T3. Unisex Bathroom 109 has been added to the Room Finish Schedule.

- 3) Sheet C2 refers to Sheets C3 and C4, but those were not included in the set.

The only Civil Sheets are C1 and C2. Sheets C3 and C4 do not exist.

- 4) The wording on alternate 3 leads me to believe that you are only looking for the cost to completely demolish the building (above what was called for in the plans/specs). The wording does not tell us to price the additional concrete slabs/foundations/walls/etc. that would be associated with completing the work. Can you clarify for me what you are looking for?

For Alternate #3 please include the cost to completely demolish the building and replace all existing slab/foundations/walls/etc. that are to remain in the Base Bid Option.

- 5) Clarification: In Addendum #1 it was noted to "Relocate Fire Alarm Control Panel (FACP) to the wall inside the Stair 108, between the egress doors."

There is not an existing FACP at the Pavilion Building. The new FACP is to be located to the wall inside Stair 108, between the egress doors.

All else remains unchanged from original bid document.

Please acknowledge receipt of this addendum within your proposal, failure to do so may subject a bidder to disqualification.

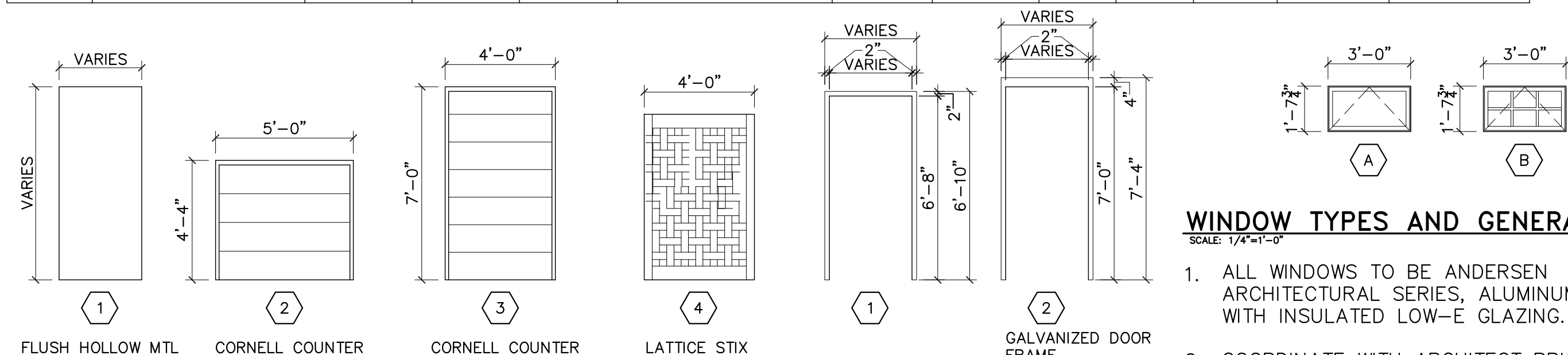
End of Addendum #2

DOOR SCHEDULE

NO.	ROOM NAME	DOOR		RATING	SIZE	FRAME		DETAILS		HRDWR	NOTES
		TYPE	MATERIAL			H	S				
1	STAIR 108	1	HM	-	3'-0" x 7'-0"	2	HM	-	-	1,3,7	-
2	WOMEN'S ROOM 104	4	WD	-	3'-9" x 7'-0"	-	-	-	-	2,8,9	-
3	WOMEN'S ROOM 104	1	HM	-	3'-0" x 7'-0"	2	HM	-	-	1,3,7	-
4	MEN'S ROOM 106	1	HM	-	3'-0" x 7'-0"	2	HM	-	-	1,3,7	-
5	MEN'S ROOM 106	4	WD	-	3'-9" x 7'-0"	-	-	-	-	2,8,9	-
6	KITCHEN 103	1	HM	-	3'-0" x 7'-0"	2	HM	-	-	1,3,7	-
7	KITCHEN 103	2	SS	-	3'-0" x 4'-4"	-	SS	-	-	-	COUNTER DR
8	KITCHEN 103	2	SS	-	3'-0" x 4'-4"	-	SS	-	-	-	COUNTER DR
9	KITCHEN 103	2	SS	-	3'-0" x 4'-4"	-	SS	-	-	-	COUNTER DR
10	KITCHEN 103	2	SS	-	3'-0" x 4'-4"	-	SS	-	-	-	COUNTER DR
11	SODA 107	3	SS	-	3'-0" x 7'-0"	-	SS	-	-	-	COUNTER DR
12	STAIR 108	1	HM	-	3'-0" x 7'-0"	1	HM	-	-	1,4,7	-
13	TOILET 102	1	HM	-	2'-6" x 6'-8"	1	HM	-	-	1,5	-
14	JANITOR 105	1	HM	-	2'-6" x 6'-8"	1	HM	-	-	1,6	-
15	STORAGE 201	1	HM	-	3'-0" x 6'-8"	1	HM	-	-	1,4,7	-
16	UNISEX BATH 109	1	HM	-	3'-0" x 7'-0"	2	HM	-	-	1,3,7	-

HARDWARE SCHEDULE

NO.	DESCRIPTION	MANUFACTURER	MODEL	DESCRIPTION
1	HINGE SET	STANLEY	F179 US26D	3 HINGES, 4-1/2" x 4-1/2", BRUSHED CHROME BALL BEARING
2	HINGE SET- LATTICE GATE	STANLEY	F179 US26D	2 HINGES, 4-1/2" x 4-1/2", BRUSHED CHROME BALL BEARING
3	PUSH PLATE/PULL BAR/DEADBOLT LOCK	ROCKWOOD/SCHLAGE	-	ROCKWOOD PUSH PLATE 70C,PULL PLATE 111X70C STAINLESS STEEL, DEADBOLT LOCK: SCHLAGE B500 SERIES, KEY BOTH SIDES, SATIN CHROME
4	DOOR LEVER/LOCK SET	SCHLAGE	S10D	S-SERIES, STYLE "NEPTUNE", PASSAGE LATCH, FINISH 626 SATIN CHROMIUM PLATED
5	DOOR LEVER/LOCK SET	SCHLAGE	S40D	S-SERIES, STYLE "NEPTUNE", BEDROOM/BATHROOM PRIVACY LOCK, FINISH 626 SATIN CHROMIUM PLATED
6	DOOR LEVER/LOCK SET	SCHLAGE	L9070	L-SERIES, HEAVY DUTY, CLOSET LOCK, FINISH 626 SATIN CHROMIUM PLATED
7	DOOR CLOSER	LCN	P1371	DOOR CLOSER W/ALUMINUM FINISH
8	PAD LOCK	-	-	-
9	HOOK AND EYE FOR GATE	-	-	ED



WINDOW TYPES AND GENERAL NOTES:

- ALL WINDOWS TO BE ANDERSEN ARCHITECTURAL SERIES, ALUMINUM CLAD WITH INSULATED LOW-E GLAZING.
- COORDINATE WITH ARCHITECT PRIOR TO WINDOW INSTALLATION

ROOM FINISH SCHEDULE

NO.	DESCRIPTION	FLOOR	BASE	WALLS				CEILING		NOTES
				NORTH	EAST	SOUTH	WEST	MATERIAL	HEIGHT	
101	STORAGE/PREP	VSF3	VSF3	FRP1	FRP1	FRP1	FRP1	GYP, P1	8'-9"	-
102	TOILET	VSF1	CTB1	CWT1	CWT1	CWT1	CWT1	GYP, P1	VARIES	-
103	KITCHEN	VSF3	VSF3	FRP1	FRP1	FRP1	FRP1	GYP, P1	8'-9"	-
104	WOMEN'S ROOM	VSF2	CTB2	CWT2,P3	CWT2	CWT2	CWT2,P3	GYP, P1	8'-9"	-
105	JANITOR	VSF3	VSF3	P3,P5	P3,P5	P3,P6	P3,P6	GYP, P1	8'-9"	-
106	MEN'S ROOM	VSF1	CTB1	CWT1,P3	CWT1,P3	CWT1	CWT1	GYP, P1	8'-9"	-
107	SODA	CONC	RCB1	P4,P6	P4,P6	P4,P6	P4,P6	GYP, P1	8'-9"	-
108	STAIR	RST1	RCB1	P2,P5	P2,P5	P2,P5	P2,P5	GYP, P1	7'-6"	-
109	UNISEX TOILET	VSF1	CTB1	CWT1	CWT1	CWT1	CWT1	GYP, P1	8'-9"	-
201	STORAGE	VSF3	VSF3	P2,P5	P2,P5	P2,P5	P2,P5	GYP, P1	VARIES	-

DOOR TYPES

SCALE: 1/4"=1'-0"

BATHROOM FIXTURE AND ACCESSORY SCHEDULE

ITEM	MODEL #	DESCRIPTION	NOTES
1	2854.128	AMERICAN STANDARD MADERA ADA 1.28 GPF AND MANUAL FLUSH VALVE, FLOOR MOUNTED TOILET	-
2	6590.125	AMERICAN STANDARD WASHBROOK 0.125 GPF URINAL WITH MANUAL FV	-
3	4869.004	AMERICAN STANDARD REGALYN ENAMELED CAST IRON WALL HUNG SINK	-
4	5502.170	AMERICAN STANDARD MONTERREY CENTERSET LAVATORY FAUCET W/GRID DRAIN	-
5	-	GLOBAL FLOOR ANCHORED/OVERHEAD BRACED STAINLESS STEEL TOILET PARTITIONS	#4 SATIN FINISH
6	B-5806x36	36" HORIZONTAL BOBRICK SERIES CONCEALED MOUNTING W/SNAP FLANGE GRAB BAR	PEENED NON-SLIP GRIPPING SURFACE
7	B-5806x42	42" HORIZONTAL BOBRICK SERIES CONCEALED MOUNTING W/SNAP FLANGE GRAB BAR	PEENED NON-SLIP GRIPPING SURFACE
8	B-5806x18	18" VERTICAL BOBRICK SERIES CONCEALED MOUNTING W/SNAP FLANGE GRAB BAR	PEENED NON-SLIP GRIPPING SURFACE
9	B-166 2436	24"x36" BOBRICK CLASSIC SERIES CHANNEL FRAMED MIRROR/SHELF COMBO	-
10	B-2111	BOBRICK CLASSIC SERIES SURFACE MOUNTED SOAP DISPENSER, STAINLESS STEEL	SATIN FINISH
11	B-212	BOBRICK CLOTHES HOOK AND BUMPER	-
12	B-282 25	BOBRICK CLASSIC SERIES SURFACE MOUNTED SANITARY NAPKIN/TAMPON VENDOR	-
13	B-254	BOBRICK CLASSIC SERIES SURFACE MOUNTED SANITARY NAPKIN DISPOSAL	-
14	B-2892	BOBRICK CLASSIC SERIES SURFACE MOUNTED TWIN JUMBO ROLL TOILET TISSUE DISPENSER	-
15	B-221	BOBRICK CLASSIC SERIES SURFACE MOUNTED SEAT COVER DISPENSER	-
16	B-2400	33 GAL BOBRICK FLOOR STANDING LARGE CAPACITY WASTE RECEPTICAL	-
17	XL-SB	XCELERATOR WALL MOUNTED AUTOMATIC HAND DRYER	BRUSHED STAINLESS STEEL
18	KB200	KOALA HORIZONTAL BABY CHANGING STATION, SURFACE MOUNT, WHITE GRANITE	-
19	63M	MUSTEE JAN MOP SINK	SAME AS KITCHEN

COLOR KEY MANUFACTURER GUIDE

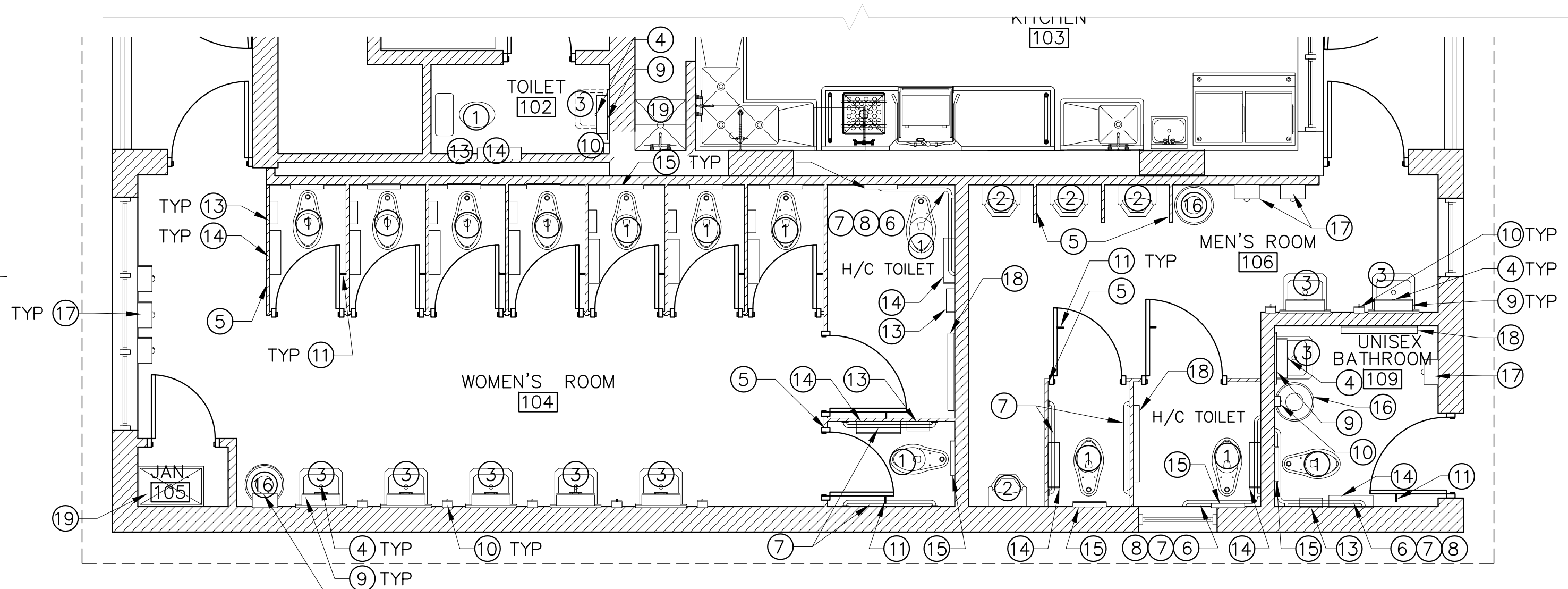
ITEM	MANUFACTURER	MODEL/TYPE	COLOR & FINISH	REMARKS
WALLS				
CWT1	CROSSVILLE	COLOR BLOX 6X12	A1105 YELLOW BRICK ROAD	RUNNING BOND PATTERN
CWT2	CROSSVILLE	COLOR BLOX 6X12	A1103 SLINKY	RUNNING BOND PATTERN
P1	SHERWIN WILLIAMS	HARMONY	CEILING WHITE, FLAT	-
P2	SHERWIN WILLIAMS	HARMONY	SW7021 SIMPLE WHITE, EGGSHELL	-
P3	SHERWIN WILLIAMS	HARMONY	SW7072 ONLINE, SEMI-GLOSS	TRIM
P4	SHERWIN WILLIAMS	EXTERIOR GRADE	SW7021 SIMPLE WHITE, SEMI GLOSS	-
P5	SHERWIN WILLIAMS	HARMONY	WALL PRIMER	PRIMER-FOR GYP WALLS
P6	SHERWIN WILLIAMS	PREP-RITE BLOCK FILLER	WHITE	CMU BLOCK FILLER PRIMER
FRP1	MARLITE	STANDARD FRP	STANDARD, PEBBLE FINISH WHITE	-
FLOORS				
VSF1	ALTRO	AQUARIUS VINYL SAFETY FLOORING	CORAL CRAB	-
VSF2	ALTRO	AQUARIUS VINYL SAFETY FLOORING	SPOONBILL	-
VSF3	ALTRO	ATLAS SAFETY FLOORING	ANVIL	COVE UP WALL 6"
RST1	JOHNSONITE	RUBBER STAIR TREAD W/INTEGRATED RISER	71 STORM CLOUD, RAISED ROUND TREAD/RISER	-
BASE				
CTB1	CROSSVILLE	COLOR BLOX 6X12 COVE BASE	YELLOW BRICK ROAD	-
CTB2	CROSSVILLE	COLOR BLOX 6X12 COVE BASE	SLINKY	-
RCB1	JOHNSONITE	4" TRADITIONAL COVE BASE	71 STORM CLOUD	-
CEILING				
GYP	-	-	P2	-
MISC				
-	-	-	-	-

ROOM FINISH GENERAL NOTES:

- MANUFACTURER'S NAMES AND CATALOG NUMBERS ARE USED TO PROVIDE AN INDICATION OF SURFACE TEXTURES AND COLORS DESIRED. OTHER MANUFACTURER'S PRODUCTS OF SIMILAR SURFACE TEXTURES, COLORS AND MEETING THE SPECIFIED REQUIREMENTS WILL BE ACCEPTABLE.
- CHANGES IN FLOOR FINISHES OCCUR UNDER DOORS TYPICALLY. CHANGES WHICH DO NOT OCCUR AT DOORS ARE INDICATED ON FLOOR PLANS.
- WHERE PATTERNS OR INSTRUCTIONS INDICATE, ARCHITECT SHALL PROVIDE DRAWINGS OR DIRECTIONS FOR FLOOR PATTERNS AND WALL PATTERN DESIGNS.
- ANY ACCESSORY ROOMS NOT LISTED ON THE ROOM FINISH SCHEDULE (CLOSETS, ETC.) SHALL BE PROVIDED WITH THE SAME FINISHES AS THE ADJACENT ROOM.
- UNLESS NOTED OTHERWISE PROVIDE APPROPRIATE TRANSITION STRIPS AT INTERSECTIONS OF DISSIMILAR FLOOR MATERIALS.
- PROVIDE MOISTURE RESISTANT GYP BD AT ALL WET AREAS.

ROOM FINISH LEGEND:

- FLOOR FINISHES:**
 CONC= CONCRETE
 CT= CERAMIC TILE
 RST= RUBBER STAIR TREAD
 VSF= VINYL SAFETY FLOOR
- WALL FINISHES:**
 CWT= CERAMIC WALL TILE
 GYP= GYPSUM WALL BOARD
 P= PAINT
 FRP= FIBERGLASS REINFORCED PANELS
- CEILING FINISHES:**
 GYP= GYPSUM WALL BOARD
- BASE FINISHES:**
 CTB= CERAMIC TILE BASE
 RCB= RUBBER COVE BASE
- GENERAL:**
 NIC= NOT IN CONTRACT
 TBD= TO BE DETERMINED



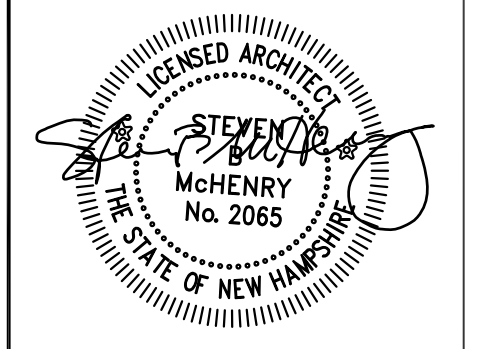
1 BATHROOM PLAN
SCALE: 1/4"=1'-0"

PROJECT:

KEY:

McHENRY
ARCHITECTURE

4 Market Street
Portsmouth, New Hampshire
603.430.0274



REVISIONS:

BID SET

PROJECT NAME:

Prescott Park
Pavilion Building
Portsmouth, NH

PROJECT NO.:

10014

DRAWN BY:

JU

APPROVED BY:

SMcH

ISSUE DATE:

16SEP12013

DRAWING NAME:

SCHEDULES

SCALE:

1/4"=1'-0"

DRAWING NO.:

T3