

CITY OF PORTSMOUTH  
Department of Public works

**BID #14-25 Foundry Place Parking Office Construction**

**ADDENDUM 3**

**QUESTIONS FROM CONTRACTOR:**

1. MECH - Specification 23 31 00-5 - They are calling for soldered or resi-welded seams for the first 15' of horizontal duct from the roof penetrations. Can this be substituted by welding watertight?
2. MECH - Specification 23 09 13-2 and 23 72 00-3 - Does the Foundry Place Parking Office have preferred controls contractor? Division 25 is noted in 23, but there is no 25 in the specifications. Notes: section 25 15 00 and 25 35 13.
3. PLBG - Is a trap guard for FD-1 suitable for this project?
4. HVAC Controls- Does the City have an ATC contractor we are to use on this project?
5. Fire Alarm- will any more information be provided on the existing fire alarm system and fire alarm Scope of Work for this space?
6. Detail 5/A8.02 calls out for a Fry Reglet glass channel header. However, Fry Reglet only makes a product DMGT which installs completely different than what is drawn on the plan. How should we proceed?
7. Please clarify if EMT or PVC conduit for all homeruns to the first device is acceptable then change over to Metal Clad Cable (MC Cable), or is MC cable acceptable throughout the space?
8. The existing space has PVC conduit installed in it, does the customer want PVC or EMT?
9. Drawing E1.02, the legend calls for switched receptacles in most areas, there are no switches shown on the drawings, please advise?
10. Drawing E1.02, keynote 1, provide a Centralized Controller, what does this mean?
11. Can the bid date be extended to November 27th?
12. Specs read "Price as alternate to provide ACT ceilings beneath concrete deck/drive aisle (plan north of column line A) Do not provide beneath metal decking (plan south of column line A)".  
These column lines are not on the RCP - what plan will show this alternate clearly?
13. The millwork spec calls for an AWI certification for the millwork. Is this required on a millwork project of this size/ scope?
14. Should there be a specification section for Automatic Fire Protection on this project?

**RESPONSES:**

1. No exception taken.
2. See response below Question #4 for City's preferred controls contractor. Note that no DDC is required for this project - only local manufacturer's controls are required.
- 3 No exception taken, given Contractor verifying approval by AHJ.
4. Reliable Controls, ENE is our controls vendor out of Bow NH, their contact is Paul O'Brien.
  - ENE Systems General Manager
  - Work: 603-856-0330
  - Mobile: 603-860-2695
  - Email: [pobrien@eneofnh.com](mailto:pobrien@eneofnh.com)

CITY OF PORTSMOUTH  
Department of Public works

- Address: 155 River Road, Unit 10 Bow, NH 03304

5. Contractors to coordinate with the City for record fire alarm drawings dated 2017 for original design intended configurations. The existing Fire Alarm system is Notifier; the FACP is located in the main electrical room. Contractors to field verify all existing conditions.

Project system requirements are listed on Sheet FA0.01 and Specification Section 28 46 00. Contractor to submit detailed stamped/signed fire alarm drawings and product data for AHJ's review and approval (which should also be submitted for RLA's review as submittal(s)).

6. Fry Reglet DMGT in color to match paint color is acceptable.

7. Most homeruns will be EMT unless exposed to physical damage. Refer to Specification 26 05 33.13, Section 2.01 for approved Conduit Applications. MC Cable is permitted incertain applications. Refer to 26 05 19, Section 2.01 for approved uses.

8. The use of PVC for interior conduit installation is not permitted unless approved by COP. Provide EMT, IMC, RMC, FMC, or MC in accordance with Specification 26 05 19 and 26 05 33.13.

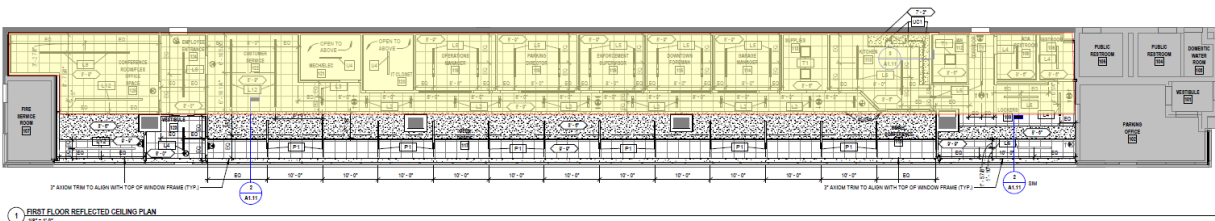
9. These receptacles are intended to be automatically controlled in compliance with ASHRAE 90.1, section 8.4.2. Provide plug load controllers and power packs for integration with lighting control system. See attached sample lighting control riser diagram for reference on page 2.

10. Keynote #1 notes "provide 120V power connection for centralized controller." This refers to central controller for mechanical ASHP system. Refer to Sheet M1.01 Keynote #7.

11. Yes, the bid date is being extended to December 2nd. See Addendum 2.

12. No specifications included for fire protection as this is intended to be a design/build installation. Project system requirements are listed on Sheet FP1.01. Contractor to submit detailed stamped/signed fire protection drawings and product data for AHJ's review and approval (which should also be submitted for RLA's review as submittal(s)).

13. See highlighted area below that this alternate refers to. This is an alternate to provide acoustical insulation on top of the ACT grid where it is beneath the driving surface above. We included this so we could have a price to add the insulation if we determine that the acoustics are louder than desired.



14. This is intended to be a design/build installation. Project system requirements are listed on Sheet FP1.01. Contractor to submit detailed stamped/signed fire protection drawings and product data for AHJ's review and approval (which should also be submitted for RLA's review as submittal(s)).

**The bidder will acknowledge this addendum within your proposal. Failure to do so may subject bidder to disqualification**

END OF ADDENDUM