

*City of Portsmouth
Public Works Department*

**Addendum #1
Parrott Ave Parking Lot Project
Bid Proposal #14-16**

Issued September 17, 2015

This addendum forms part of the original document marked: **Bid Proposal #14-16 – Parrott Ave Parking Lot Paving**. Please acknowledge this addendum within your proposal, failure to do so may subject a bidder to disqualification. Failure to acknowledge receipt of the Addendum may subject the Bidder to disqualification.

Contract Document and Specification Changes

Item 1-1 Proposal Form – Page 9

Delete the Proposal Form in its entirety and **replace** with the Revised Proposal Form issued with this Addendum.

The following bid quantities have been changed:

Item # 609.02	Curved Vertical Granite Curbing
Item # 614.72114	2” Schedule 40 Conduit, Installed
614.511	14” Concrete pull box with cast iron cover labeled ‘electric’
Item # 625	Light Pole Bases
Item # 625.52A	Light Pole with Luminaire, Type A

The following bid item has been added:

Item # 609.026	6” Curved Vertical Granite Curbing for Planters
----------------	---

**The following add-alternative bid items have been added:
(These are the same fixtures and bases specified in the original bid package)**

Item # 625	Light Pole Bases for Holophane Lights
Item # 625.52A	Light Pole with Luminaire, Holophane, Type A
Item # 625.52B	Light Pole with Luminaire, Holophane, Type B

**Item 1-2 Special Provisions – AMENDMENT TO SECTION 609 – Curbing Installation
Items 609.01, 609.02, 609.21, 609.22**

Materials:

ALL Curbing will be manufactured by Swenson Granite Works, Concord NH or approved equal.

If an equal is requested, a sample will be provided 1 week prior to installation.

- **All Sloped Granite Curbing shall be 4” x 12”**
- **Vertical Granite Curbing for Tree Planters shall be 6” x 18”**

- All other Vertical Granite Curbing, BOTH Straight AND Curved, shall be 5" x 17"

Item 1-3

Changes to the lighting system for the base bid:

The following specifications have been changed for the base bid:

Item # 625	Light Pole Bases
Item # 625.52A	Light Pole with Luminaire, Type A
Item # 625.52B	Light Pole with Luminaire, Type B

Special Provisions – Electrical Work – 2.08 FOUNDATIONS FOR LIGHTING POLES – Page 62

Foundations for light poles shall be as required by manufacturer, including number, type and location of anchor bolts. Foundations shall be made of minimum 5,000 psi concrete (at 28 days) and have steel reinforcement meeting ASTM A-615, grade 60 (cover to steel, 1" minimum). All foundations shall have 2-2" conduits for lighting circuits, 180 degrees apart. Foundations to be installed with the top of the concrete approximately ~~30"~~ 6" inches above final grade. Foundation minimum size is ~~24"~~ 30" diameter x ~~7'-0"~~ 6' 0" in length or as determined by the pole manufacturer. Conduits to be flush with top of concrete to not interfere with anchor bolts or pole base.

Special Provisions – Electrical Work – 2.09 LIGHTING

Base Bid Light Pole & Fixture ‘A’:

Light Pole with “Twin” Arm and Fixture as manufactured by Stresscrete/King Luminaire

(2) #K829-P2FL-IV-165(SSL)-80126-120:277 S/F KPL20 (2)#KA72-T-2-6' # KBH27-G-S11-FBP C/W 140-30/70 & D

(2) “Aurora” series 165 watt LED, Type IV distribution, flat LED array and clear flat lens, 120:277 autosensing voltage, finish painted black with (2) 6’ aluminum arms with center casting for tenon mount, finish painted black with “Belmont” series 27’ concrete octagonal pole, “eclipse” black with polished finish with anchor bolts

Base Bid Light Pole & Fixture ‘B’:

Light Pole with “Single” Arm and Fixture as manufactured by Stresscrete/King Luminaire

#K829-P2FL-IV-165(SSL)-80126-120:277 S/F KPL20 #KA72-T-1-6' # KBH27-G-S11-FBP C/W 140-30/70 & D

“Aurora” series 165 watt LED, Type IV distribution, flat LED array and clear flat lens, 120:277 autosensing voltage, finish painted black with 6’ aluminum arm with center casting for tenon mount, finish painted black with “Belmont” series 27’ concrete octagonal pole, “eclipse” black with polished finish with anchor bolts

Item 1-4 Alternative Bid Items

Special Provisions – Electrical Work – 2.09 LIGHTING

Install light poles and fixtures in quantities and locations as shown.

Light Pole Bases shall be as shown and detailed in the original bid package.

Light Pole & Fixture ‘A’: LEDG 060 35 5K AS K L4 LEDGF1FUS10C
BR1065 BK RTA2570E PL ND AK 4 As manufactured by Holophane

LEDgend (LEDG): LEDgend Roadway LED, 60 LEDS, 350mA Driver, 5,000 K CCT, Auto-sensing voltage, 120 thru 277, Black, Type IV Forward Throw, Single Fusing F1 BR1065: BR1065 Aluminum Arm 2 @ 180, Black (RTA2570E) Round Tapered Aluminum Pole 25FT, 7.0 x 4.0 x .156 Wall: RTA2570E, Plain Top, No Drill Pattern, Black Anodized, Anchor Bolts, Vibration Dampener

Light Pole & Fixture ‘B’: LEDG 060 35 5K AS K L4 LEDGF1FUS10C
BR1061 BK RTA2570E PL ND AK 4 As manufactured by Holophane

LEDgend (LEDG): LEDgend Roadway LED, 60 LEDS, 350mA Driver, 5,000 K CCT, Auto-sensing voltage, 120 thru 277, Black, Type IV Forward Throw, Single Fusing F1 BR1061: BR1061 Aluminum Arm 1 Unit, Black (RTA2570E) Round Tapered Aluminum Pole 25FT, 7.0 x 4.0 x .156 Wall: RTA2570E, Plain Top, No Drill Pattern, Black Anodized, Anchor Bolts, Vibration Dampener

Holophane

an Acuity Brands Company

Maine & New Hampshire

Office Phone: 207-582-5106

<http://www.holophane.com/>

Item 1-5 Bid Due Date Extension

Sealed bid proposals, **plainly marked**, **Parrott Ave Parking Lot**, Bid Proposal #14-16 **on the outside of the mailing envelope as well as the sealed bid envelope**, addressed to the Finance/Purchasing Department, City Hall, 1 Junkins Avenue, Portsmouth, New Hampshire, 03801, will be accepted until **2:30 p.m. on Thursday, September 24, 2015**; at which time all bids will be publicly opened and read aloud.

Drawing Changes

Item 1-7 Site Plan

The Citizens Bank property line has been adjusted to align with the curb line on the northern side of the parking lot. The light pole near the stairs has been relocated accordingly.

One additional style 'A' light has been added in the parking field and conduit runs have been adjusted accordingly. One (1) pull box has been added.

Item 1-8 Construction Details

The Light Pole Base detail has been changed to 30" diam. X 6' length to accommodate the revised light specified under the base bid.

The Light Pole Base detail for the bid alternative has been labeled as such. This is the original Light Pole Base specified for the Holophane lights which are now the Alternate Bid Item.

REVISED PROPOSAL FORM

Parrott Ave Parking Lot Paving

CITY OF PORTSMOUTH, N.H.

To the City of Portsmouth, New Hampshire, herein called the Owner.

The undersigned, as Bidder, herein referred to as singular and masculine declares as follows:

1. All interested in the Bid as Principals are named herein;
2. This bid is not made jointly, or in conjunction, cooperation or collusion with any other person, firm, corporation, or other legal entity;
3. No officer, agent or employee of the Owner is directly or indirectly interested in this Bid;
4. The bidder has carefully examined the sites of the proposed work and fully informed and satisfied himself as to the conditions there existing, the character and requirements of the proposed work, the difficulties attendant upon its execution and the accuracy of all estimated quantities stated in this Bid, and the bidder has carefully read and examined the Drawings, Agreement, Specifications and other Contract Documents therein referred to and knows and understands the terms and provisions thereof;
5. The bidder understands that the quantities of work calculated in the Bid or indicated on the Drawings or in the Specifications or other Contract Documents are approximate and are subject to increase or decrease or deletion as deemed necessary by the Portsmouth City Engineer. Any such changes will not result in or be justification for any penalty or increase in contract prices; and agrees that, if the Bid is accepted the bidder will contract with the Owner, as provided in the Contract Documents, this Bid Form being part of said Contract Documents, and that the bidder will supply or perform all labor, services, plant, machinery, apparatus, appliances, tools, supplies and all other activities required by the Contract Documents in the manner and within the time therein set forth, and that the bidder will take in full payment therefor the following item prices; and
6. It is the intention of this contract that the items listed above describe completely and thoroughly the entirety of the work as shown on the plans and as described in the specifications. All other items required to accomplish the above items are considered to be subsidiary work, unless shown as a pay item.

SEE PLAN OF PARKING LOT FOR SPECIFIC LOCATION OF ITEMS

ITEM #	EST. QTY.	UNITS	ITEM DESCRIPTION	UNIT PRICE IN FIGURES	ITEM TOTAL IN FIGURES
201.21	12	Ea.	Removal of Small Trees	_____	_____
202.5	1	Ea.	Remove Catch Basin	_____	_____
203.1	800	CY	Excavation & Removal of Excess Reclaim	_____	_____
203.1A	1750	SF	Remove Existing Sidewalk and loam along Junkins Ave and regrade for brick and cobble (F)	_____	_____
214	7,120	SY	Fine Grading	_____	_____
304.3	100	CY	Crushed Gravel in Place as needed	_____	_____
306.208	7,120	SY	8" Reclaim Stab. Base	_____	_____
306.36	350	CY	Stone for Reclaimed Stabilized Base (Token)	_____	_____
403.11 B	1,230	Ton	2.5" Machine Pave (50GYR) ¾" Fine Binder (aka Winter Binder)(Fall 2015)	_____	_____
403.11W	410	Ton	Machine Pave (50GYR) ½" Wearing (Spring 2016)	_____	_____
403.11S	30	Ton	Pavement for under Brick & Cobble sidewalk	_____	_____
403.12	20	Ton	Hand Method Pave (50GYR)	_____	_____
403.12C	50	Ton	Hand Method Pave for Curb Backfill	_____	_____
603.80208	105	LF	8" Corrugated smooth bore PE Drain Pipe	_____	_____
603.80212	136	LF	12" Corrugated smooth bore PE Drain Pipe	_____	_____
603.81012	18	LF	12" PVC Drain Pipe Installed	_____	_____
604.0007	5	Ea	Polyethylene Liner	_____	_____
604.12	5	Ea.	New Type B, 4' Catch Basin (w/Frame & Grate)	_____	_____
604.156	1	Ea.	New Type B, 6' Catch Basin (w/Frame & Grate)	_____	_____
604.45	14	Ea.	Adjust Structure Covers	_____	_____
608.5	2100	SF	Brick Sidewalk	_____	_____
608.52	2	Ea.	Handicapped Truncated Dome Panel	_____	_____
608.7	1280	SF	Cobble Stone surface	_____	_____

PROPOSAL FORM (continued)

609.01	270	LF	Vertical Granite Curbing	_____	_____
609.02	15	LF	Curved Vertical Granite Curbing	_____	_____
609.026	175	LF	6" Curved Vertical Granite Curbing for Planters	_____	_____
609.21	800	LF	Sloped Granite Curbing	_____	_____
609.22	200	LF	Sloped Granite Curbing w/Radial Joints	_____	_____
609.5A	1,000	LF	Reset Sloped Curbing	_____	_____
614.321	15	LF	2" Rigid steel for power pole riser & sweep	_____	_____
614.511	3	Ea	14" Concrete pull box with cast iron Cover labeled 'electric'	_____	_____
614.72114	1,275	LF	2" Schedule 40 Conduit, Installed	_____	_____
616	1	LS	Electrical Work for Lighting	_____	_____
618.6	10	HR	Portsmouth Police	<u>\$54.00</u>	<u>\$540.00</u>
618.7	40	HR	Flaggers	<u>\$20.00</u>	<u>\$800.00</u>
619	1	LS	Maintenance of Traffic	_____	_____
625	12	Ea.	Light Pole Bases, King Luminaire/Stresscrete	_____	_____
625.52 A	4	Ea.	Light Pole with Luminaire, King Luminaire/ Stresscrete, Type A	_____	_____
625.52B	8	Ea.	Light Pole with Luminaire, King Luminaire/ Stresscrete, Type B	_____	_____
632.0104	8,720	LF	4" Paint Striping with layout (Layout and Paint with four mobilizations, two this fall and two in the spring)	_____	_____
632.32	12	Ea.	Painted Handicap Symbol	_____	_____
661.1	5	Ea.	Bollards	_____	_____
641	100	CY	Loam and Seed	_____	_____
692	1	U	Mobilization	_____	_____

TOTAL FOR PROJECT AND BASIS OF AWARD

Total in Figures \$ _____

In Words \$ _____

PROPOSAL FORM FOR ALTERNATIVE BID CONSTRUCTION ITEMS
It is mandatory to fill out this section as well.

625	11	Ea.	Light Pole Bases, Holophane	_____	_____
625.52 A	3	Ea.	Light Pole with Luminaire, Holophane, Type A	_____	_____
625.52B	8	Ea.	Light Pole with Luminaire, Holophane, Type B	_____	_____

TOTAL FOR PROJECT ALTERNATIVE BID

Total in Figures \$ _____

In Words \$ _____

The City reserves the right to delete any portion of the work/reduce the quantities of work represented in this bid proposal form.

The undersigned agrees that for extra work, if any, performed in accordance with the terms and provisions of the Contract Documents, the bidder will accept compensation as stipulated therein.

Date

Company

By: _____
Signature

Business Address

Title: _____

City, State, Zip Code

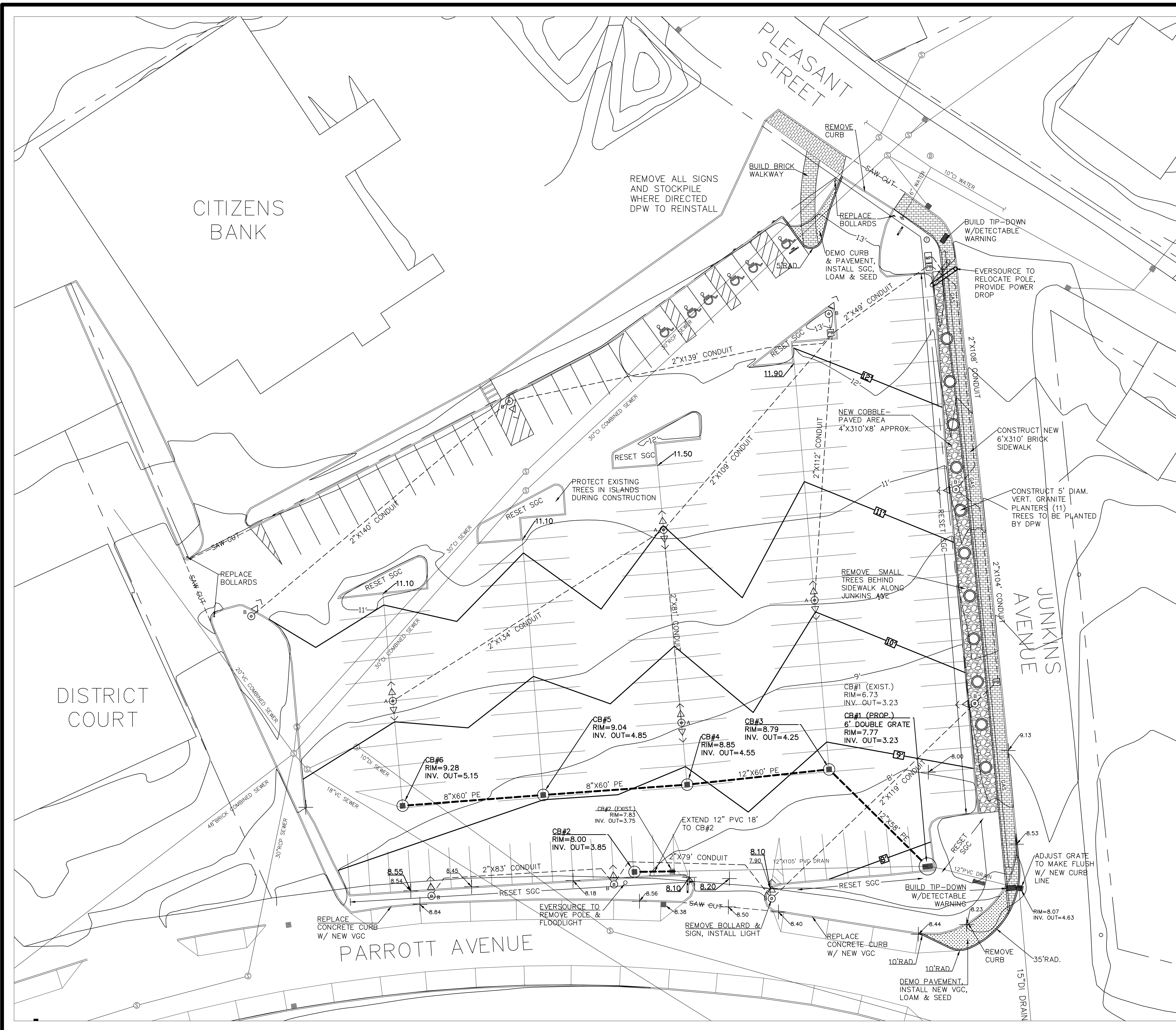
Telephone: _____

The Bidder has received and acknowledged Addenda No. _____ through _____.

All Bids are to be submitted on this form and in a sealed envelope, plainly marked on the outside with the Bidder's name and address and the Project name as it appears at the top of the Proposal Form.

We certify that the Company is currently pre-qualified with the State of New Hampshire for Small Site or Paving Work.

By: _____
Signature



NOTES:

1. TOPOGRAPHY IS BASED UPON NAVD 88
2. ALL MATERIALS PROPOSED ON THIS PLAN ARE TO MEET NHDOT AND CITY STANDARD SPECIFICATIONS
3. UTILITIES (IF SHOWN) ARE APPROXIMATE. CALL 1-800-DIG SAFE PRIOR TO ANY EXCAVATION
4. HOURS OF WORK WILL BE 7 AM TO 5 PM.
5. ONE HALF OF LOT SHALL REMAIN OPEN AT ALL TIMES.
6. SAFE ACCESS FOR VEHICLES AND PEDESTRIANS MUST BE MAINTAINED AT ALL TIMES THROUGHOUT OPEN HALF OF LOT.
7. ALL SIDEWALKS MUST BE SAFE FOR THE GENERAL PUBLIC AT ALL TIMES. BARRICADES, SIGNS ETC. WILL BE PROVIDED UNDER THE MAINTENANCE OF TRAFFIC ITEM IF NEEDED TO PROTECT THE PUBLIC. IT IS THE DECISION OF THE ENGINEER WHETHER THE CONTRACTOR HAS SUPPLIED THE PROPER SAFETY SUPPLIES.
8. THE CONTRACTOR WILL SUPPLY THE CITY WITH A 24 HOUR PHONE NUMBER IN CASE OF EMERGENCY.
9. CALCULUM OR OTHER DUST CONTROL MEASURES WILL BE PROVIDED IF DEEMED NECESSARY BY THE ENGINEER.
10. ALL TRANSITIONS SHALL BE SAW CUT NEATLY AT THE BACK OF SIDEWALK OR AS DIRECTED IN THE FIELD BY THE ENGINEER.
11. PROVIDE NEW HANDICAP RAMPS AS SHOWN ON THE PLAN. RAMPS SHALL BE 6\"/>
- 12. PROVIDE NEW 4\"/>

LEGEND

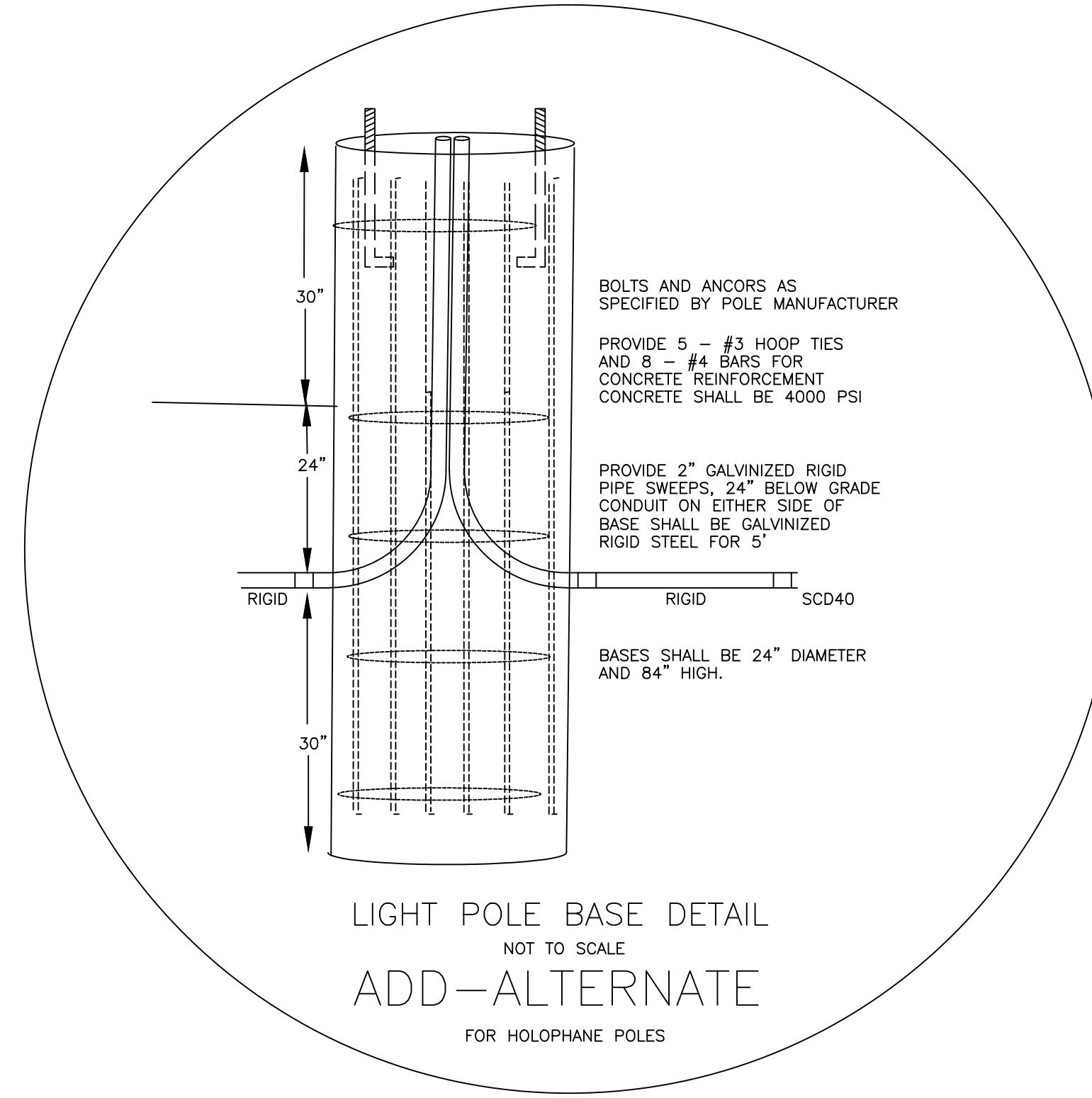
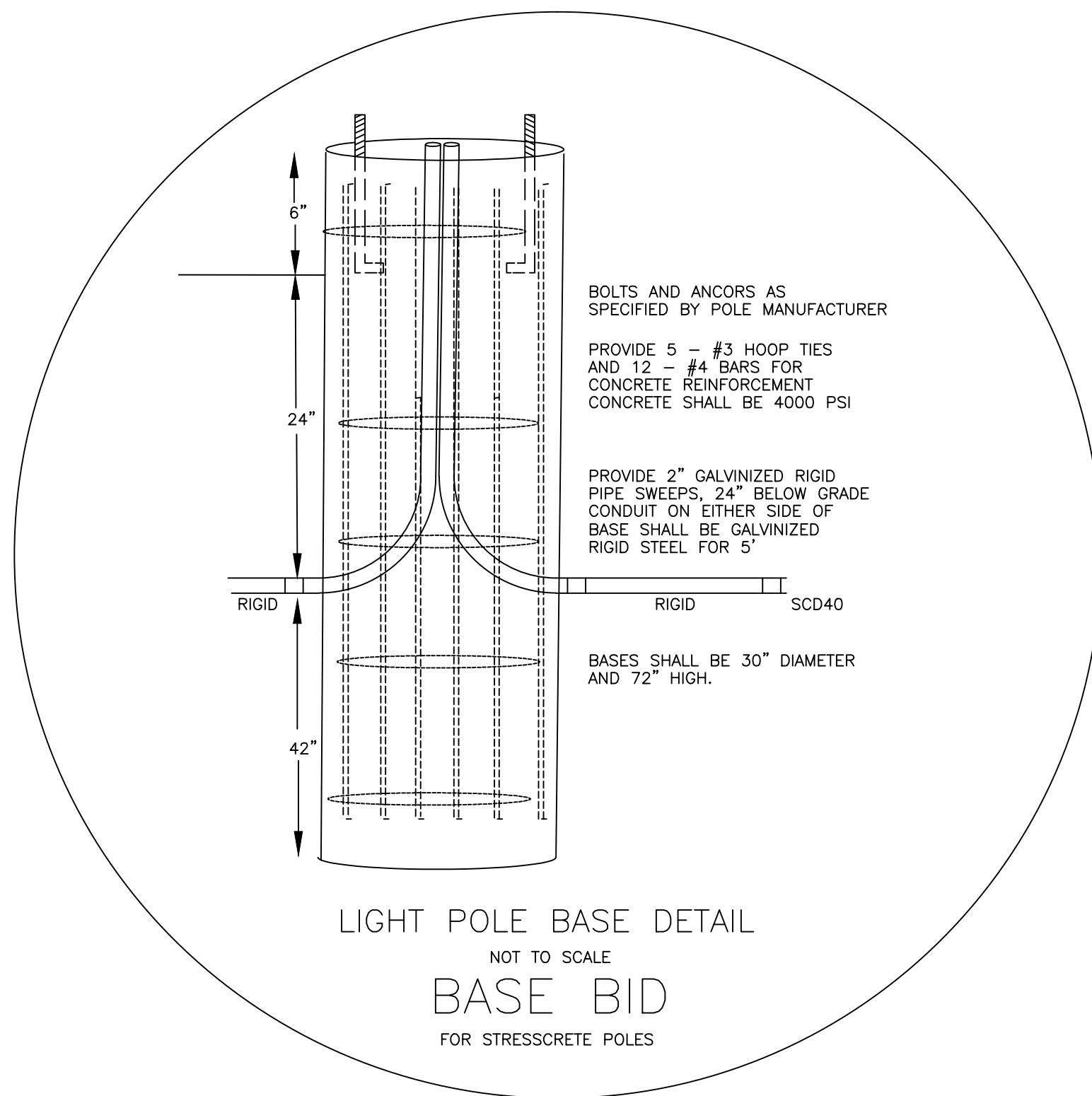
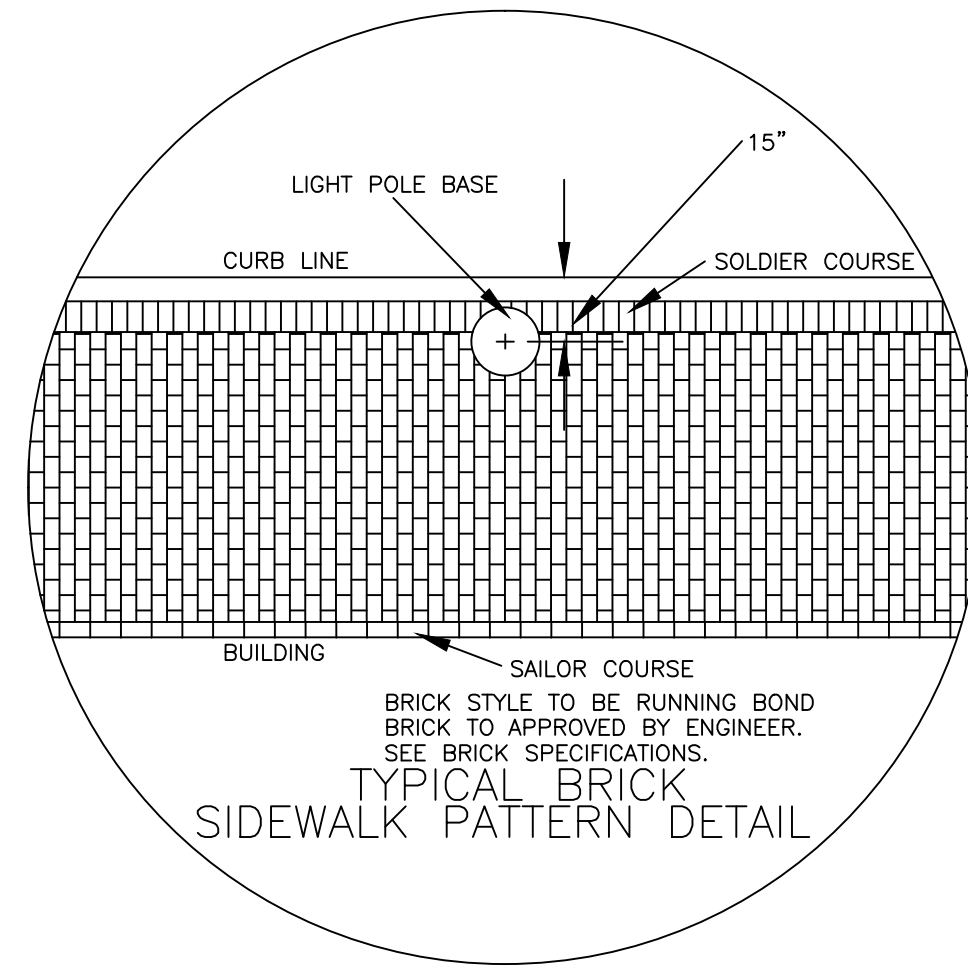
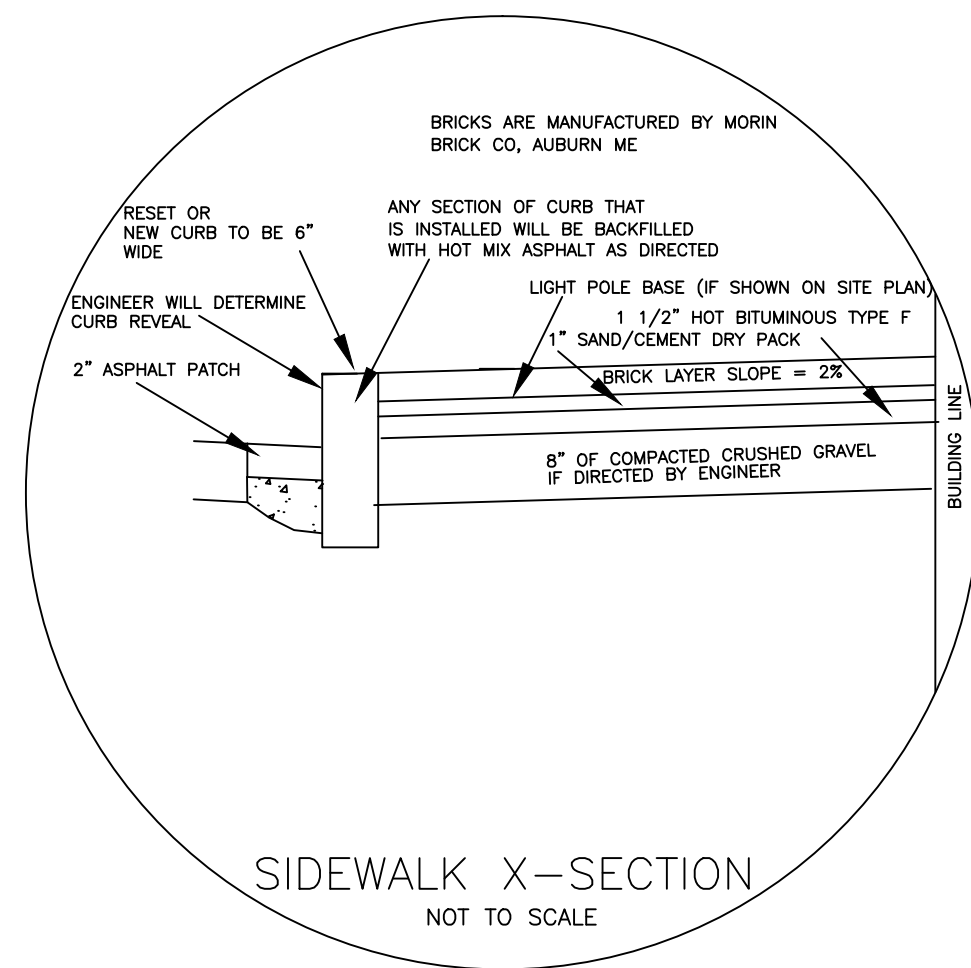
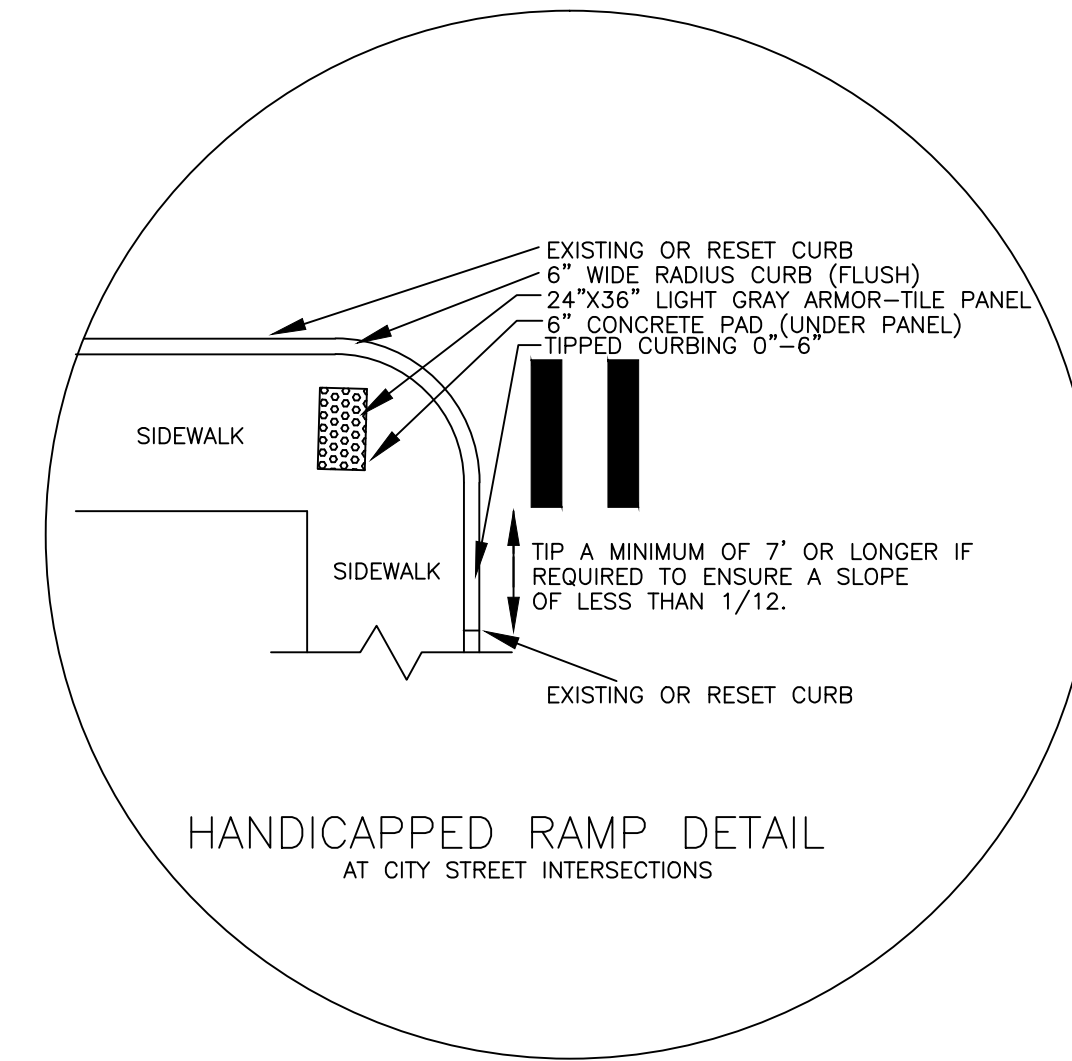
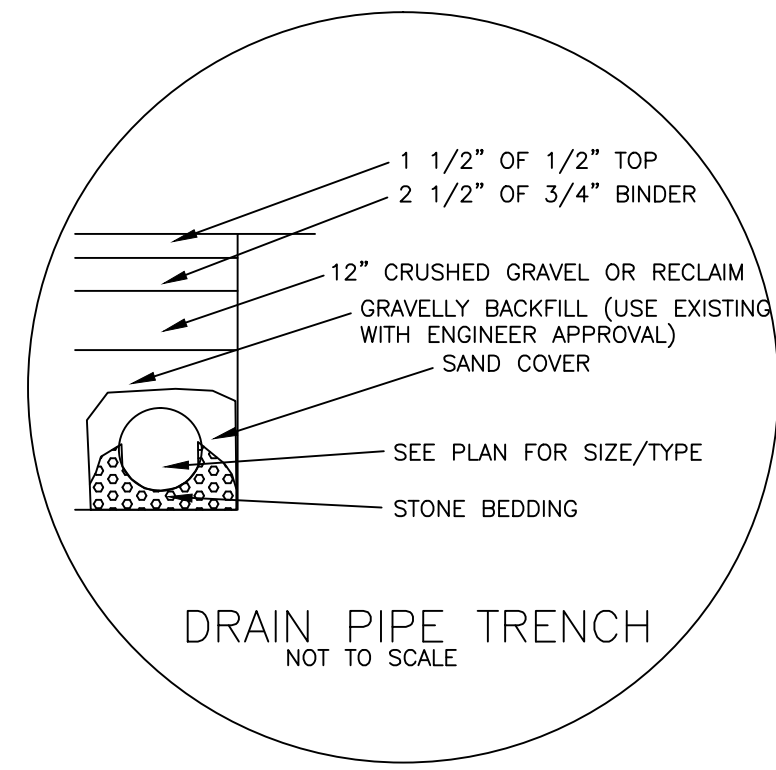
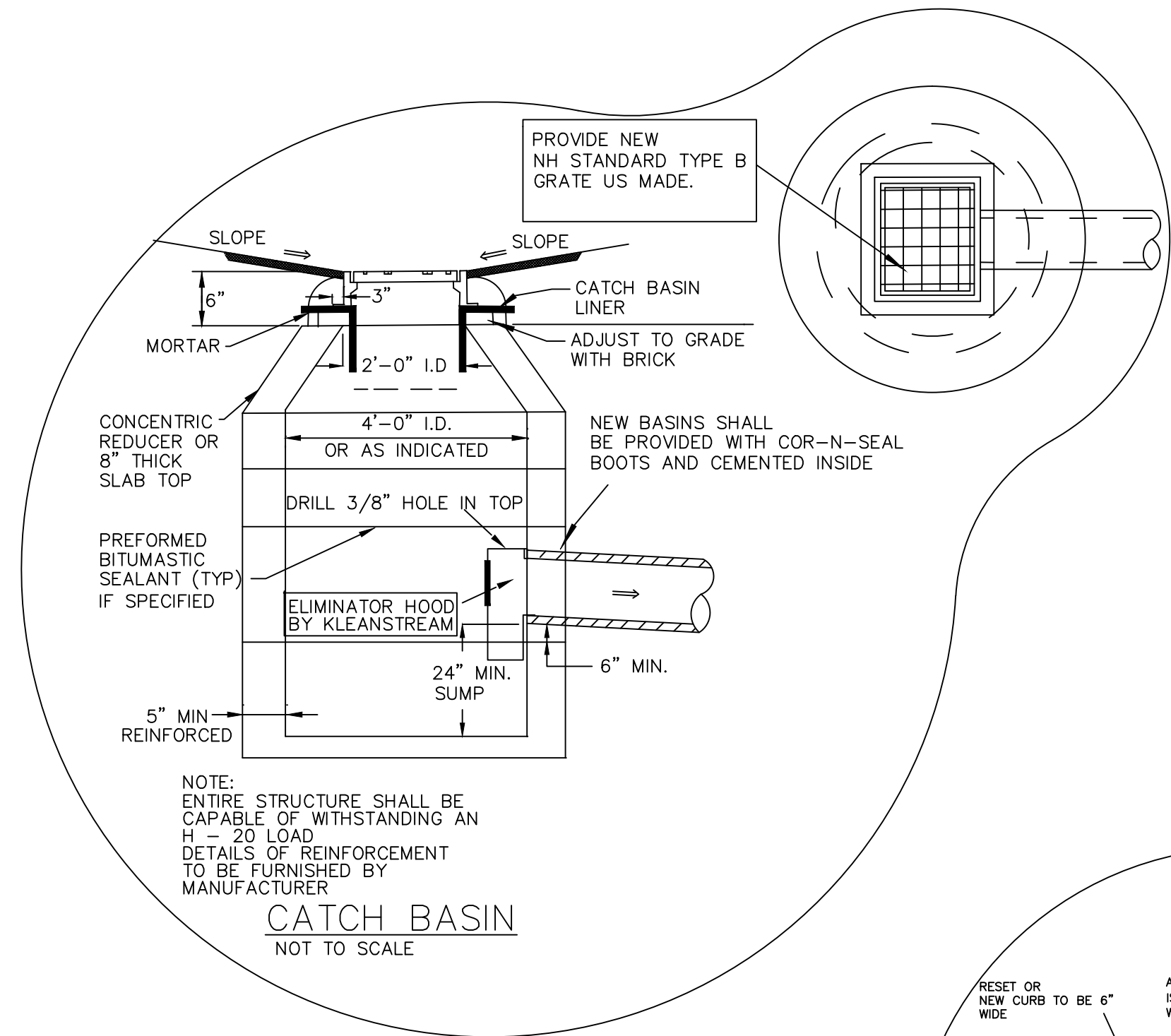
	EXISTING CATCH BASIN
	PROPOSED CATCH BASIN
	EXISTING DRAIN PIPE
	PROPOSED DRAIN PIPE
	EXISTING CONTOUR
	PROPOSED CONTOUR
	EXISTING CURB
	PROPOSED CURB
	PROPOSED ELECTRICAL CONDUIT
	PROPOSED AREA LIGHT DOUBLE LUMINAIRE
	PROPOSED AREA LIGHT SINGLE LUMINAIRE

9/17/15 REVISION 1 - ADDENDUM 1



CONSTRUCTION PLAN
FOR
PARROTT AVE PARKING LOT
SITE IMPROVEMENTS
PORTSMOUTH, NEW HAMPSHIRE
AUGUST 2015

SCALE 1"=20'



9/17/15	REVISION 1 - ADDENDUM 1
---------	-------------------------



CONSTRUCTION DETAILS
FOR
PARROTT AVE PARKING LOT
SITE IMPROVEMENTS
PORTSMOUTH, NEW HAMPSHIRE
AUGUST 2015

SCALE 1"=20'