

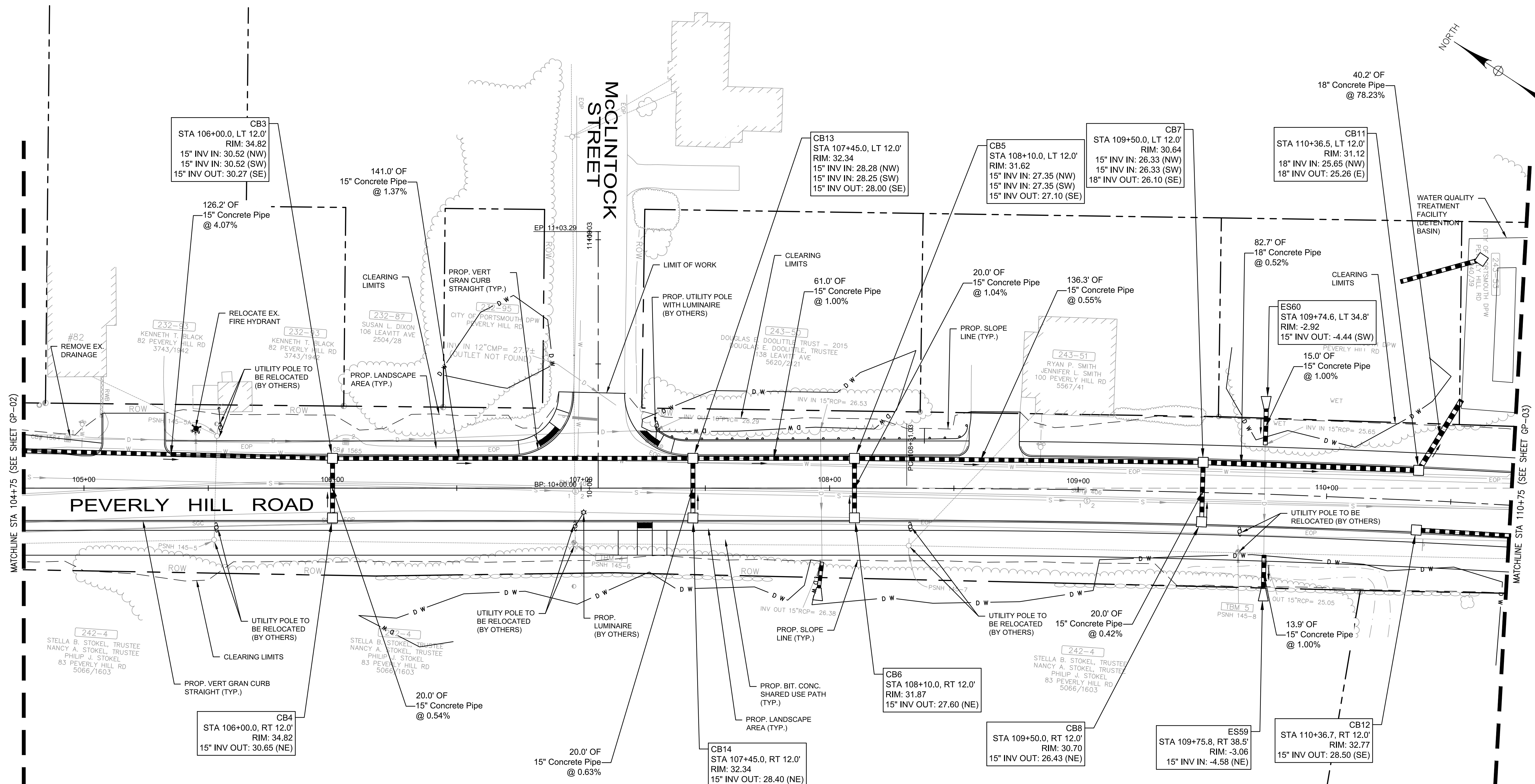
PRELIMINARY PLANS

IT IS A VIOLATION OF LAW FOR ANY PERSON, UNLESS THEY ARE ACTING UNDER THE DIRECT DIRECTION OF A LICENSED PROFESSIONAL ENGINEER, ARCHITECT, LANDSCAPE ARCHITECT, OR LAND SURVEYOR, TO ALTER AN ITEM IN ANY WAY. IF AN ITEM BEARING THE STAMP OF A LICENSED PROFESSIONAL IS ALTERED, THE ALTERING ENGINEER, ARCHITECT, LANDSCAPE ARCHITECT, OR LAND SURVEYOR SHALL STAMP THE DOCUMENT AND INCLUDE THE NOTATION "ALTERED BY" FOLLOWED BY THEIR SIGNATURE, THE DATE OF SUCH ALTERATION, AND A SPECIFIC DESCRIPTION OF THE ALTERATION.

NOTE: SEE LANDSCAPING PLANS FOR ADDITIONAL INFORMATION ON LANDSCAPE AREAS.

McFarland Johnson
53 REGIONAL DRIVE
CONCORD, NH 03301


CITY OF PORTSMOUTH CITY OF PORTSMOUTH, NEW HAMPSHIRE PEVERLY HILL ROAD RECONSTRUCTION GENERAL PLAN (SHEET 1 OF 10)			
SCALE: AS SHOWN	DESIGN: MAH	GP-01 3 OF 72	
DRAWN: MJF	PROJECT: 18082.01		
CHECKED: JWS	DATE: 07/20/2018		

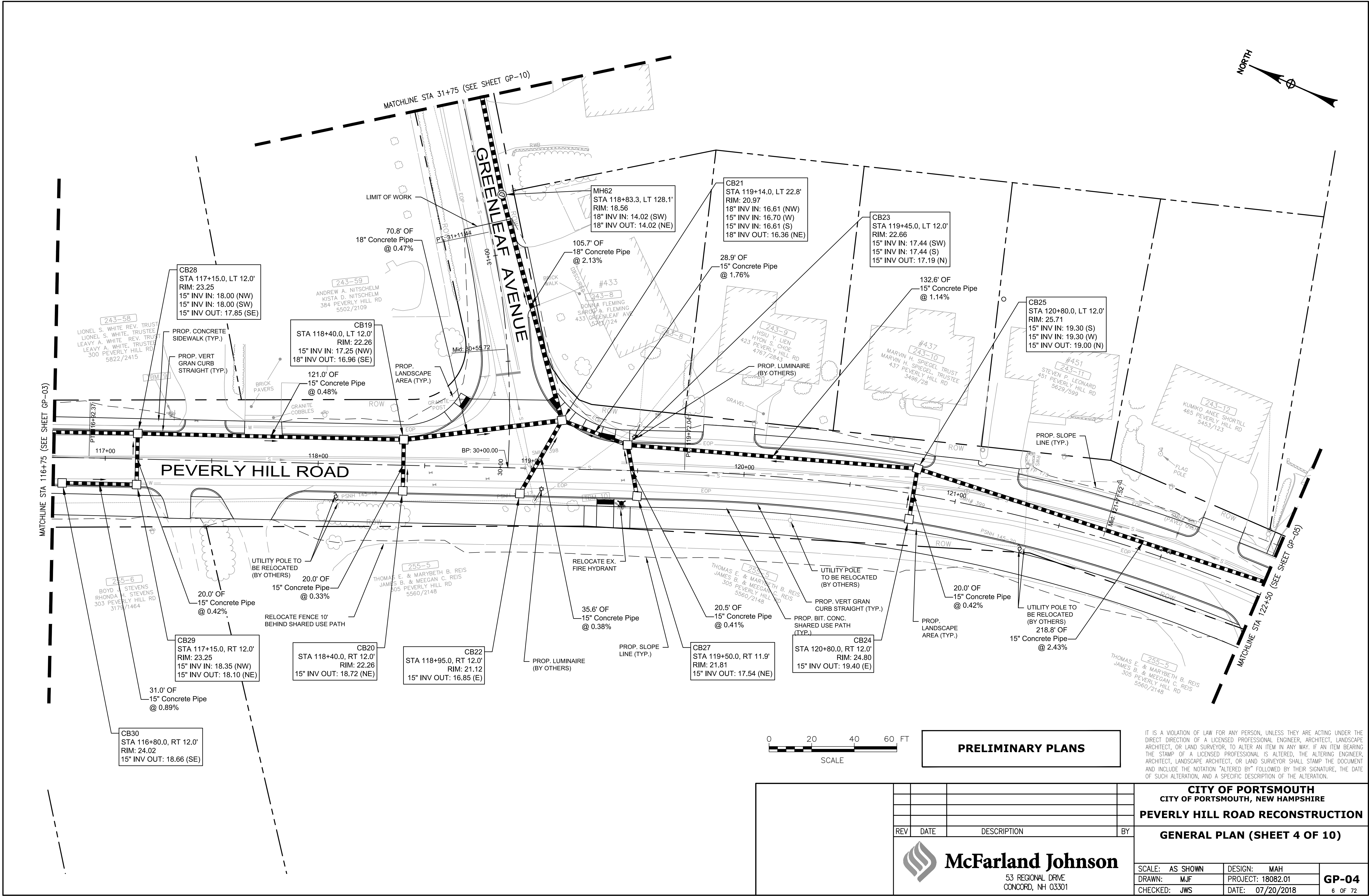


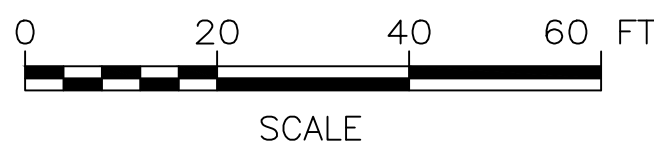
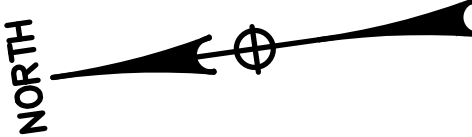
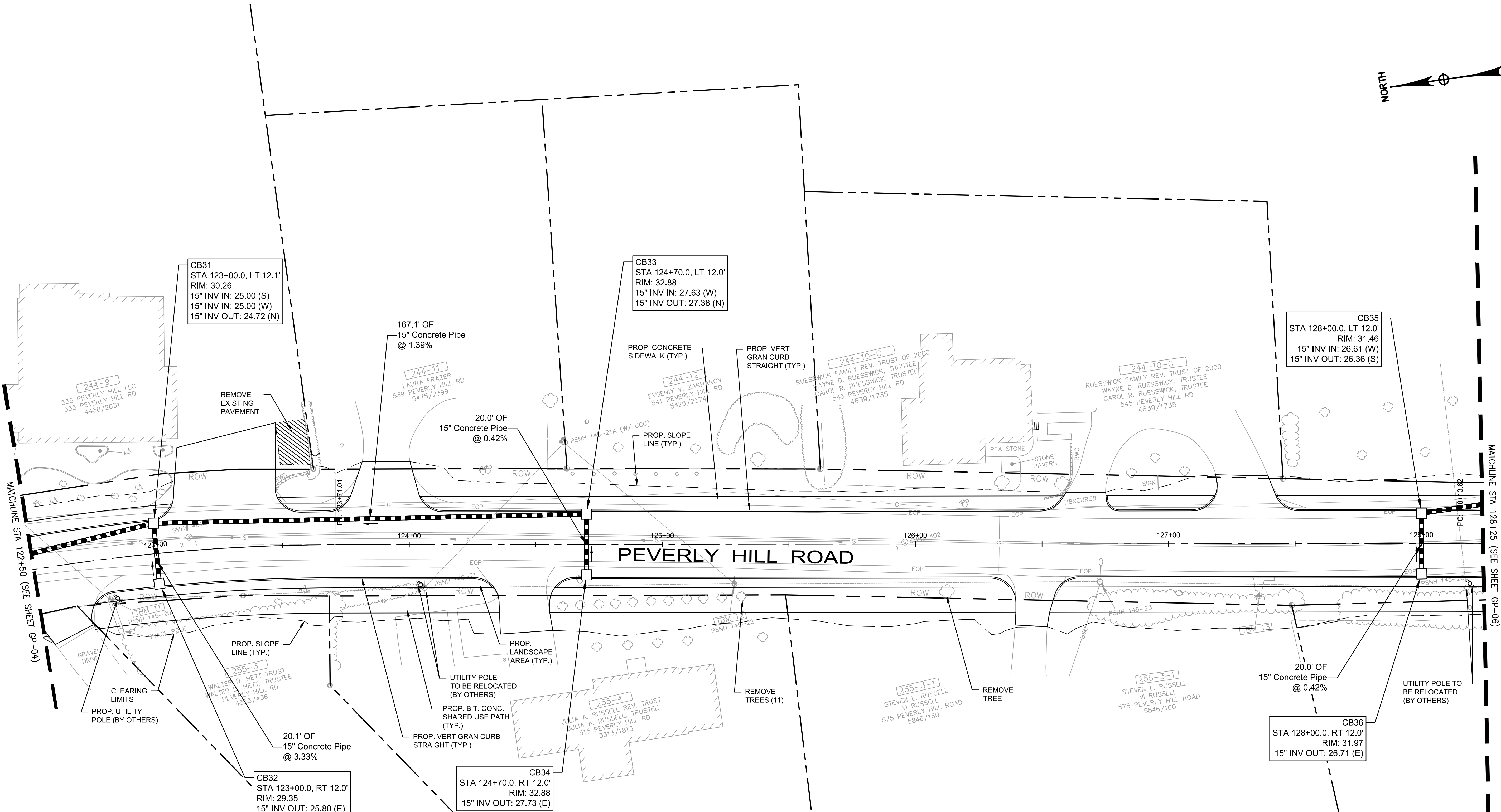
PRELIMINARY PLANS

IT IS A VIOLATION OF LAW FOR ANY PERSON, UNLESS THEY ARE ACTING UNDER THE DIRECT DIRECTION OF A LICENSED PROFESSIONAL ENGINEER, ARCHITECT, LANDSCAPE ARCHITECT, OR LAND SURVEYOR, TO ALTER AN ITEM IN ANY WAY. IF AN ITEM BEARING THE STAMP OF A LICENSED PROFESSIONAL IS ALTERED, THE ALTERING ENGINEER, ARCHITECT, LANDSCAPE ARCHITECT, OR LAND SURVEYOR SHALL STAMP THE DOCUMENT AND INCLUDE THE NOTATION "ALTERED BY" FOLLOWED BY THEIR SIGNATURE, THE DATE OF SUCH ALTERATION, AND A SPECIFIC DESCRIPTION OF THE ALTERATION.

CITY OF PORTSMOUTH
 CITY OF PORTSMOUTH, NEW HAMPSHIRE
PEVERLY HILL ROAD RECONSTRUCTION

REV	DATE	DESCRIPTION	BY	GENERAL PLAN (SHEET 2 OF 10)		
<div><div><div>McFarland Johnson</div><div>53 REGIONAL DRIVE CONCORD, NH 03301</div></div></div>				SCALE: AS SHOWN	DESIGN: MAH	GP-02 4 OF 72
				DRAWN: MJF	PROJECT: 18082.01	
				CHECKED: JWS	DATE: 07/20/2018	






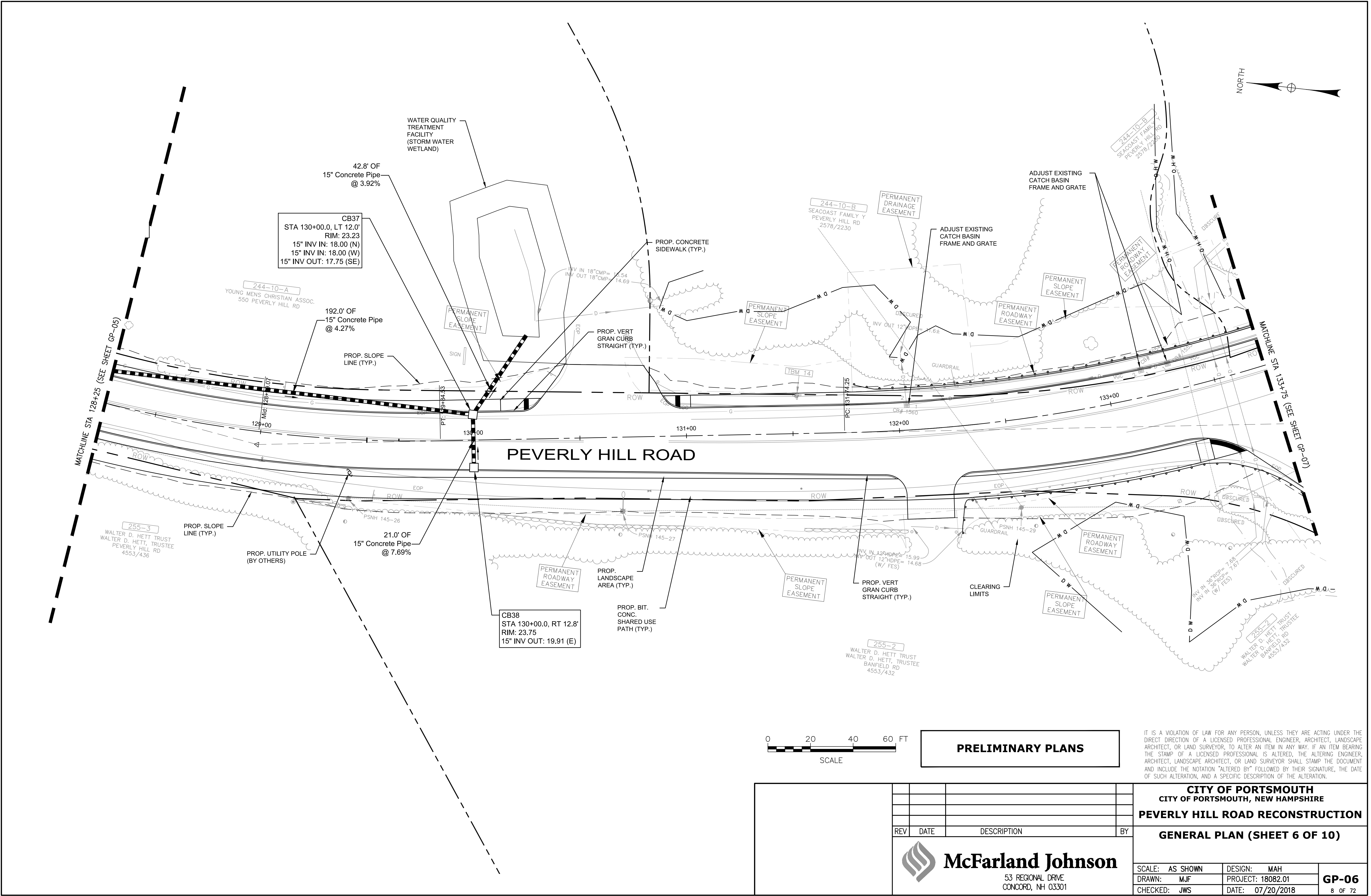
PRELIMINARY PLANS

IT IS A VIOLATION OF LAW FOR ANY PERSON, UNLESS THEY ARE ACTING UNDER THE DIRECT DIRECTION OF A LICENSED PROFESSIONAL ENGINEER, ARCHITECT, LANDSCAPE ARCHITECT, OR LAND SURVEYOR, TO ALTER AN ITEM IN ANY WAY. IF AN ITEM BEARING THE STAMP OF A LICENSED PROFESSIONAL IS ALTERED, THE ALTERING ENGINEER, ARCHITECT, LANDSCAPE ARCHITECT, OR LAND SURVEYOR SHALL STAMP THE DOCUMENT AND INCLUDE THE NOTATION "ALTERED BY" FOLLOWED BY THEIR SIGNATURE, THE DATE OF SUCH ALTERATION, AND A SPECIFIC DESCRIPTION OF THE ALTERATION.

CITY OF PORTSMOUTH CITY OF PORTSMOUTH, NEW HAMPSHIRE PEVERLY HILL ROAD RECONSTRUCTION GENERAL PLAN (SHEET 5 OF 10)			
SCALE: AS SHOWN DESIGN: MAH			
DRAWN: MJF PROJECT: 18082.01			
CHECKED: JWS DATE: 07/20/2018			
GP-05 7 OF 72			

	McFarland Johnson		
	53 REGIONAL DRIVE CONCORD, NH 03301		

REV	DATE	DESCRIPTION	BY

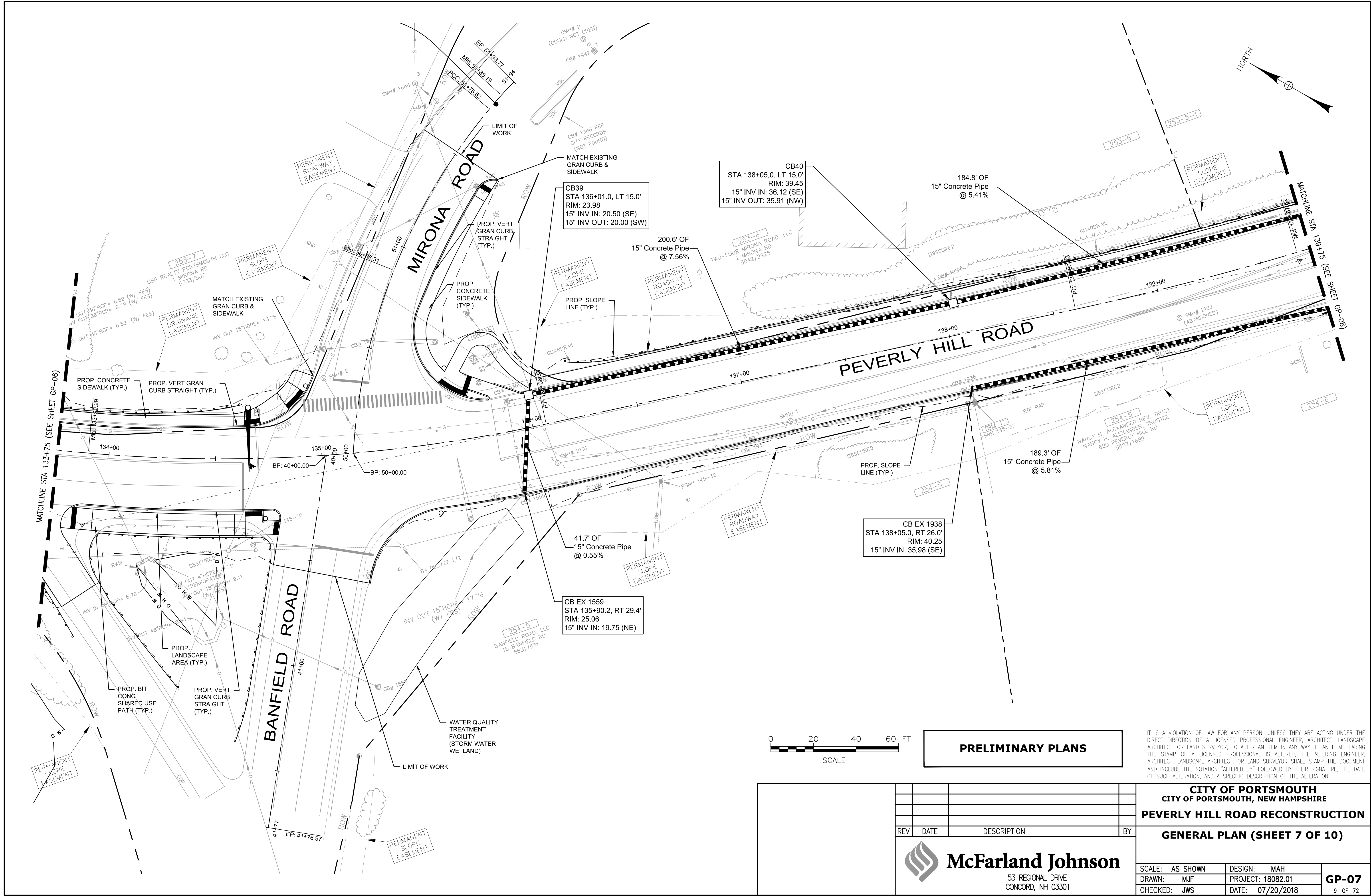


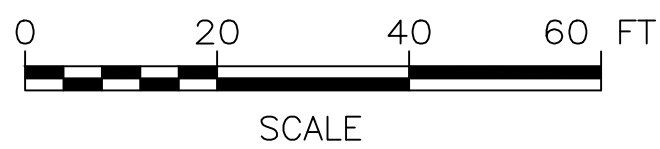
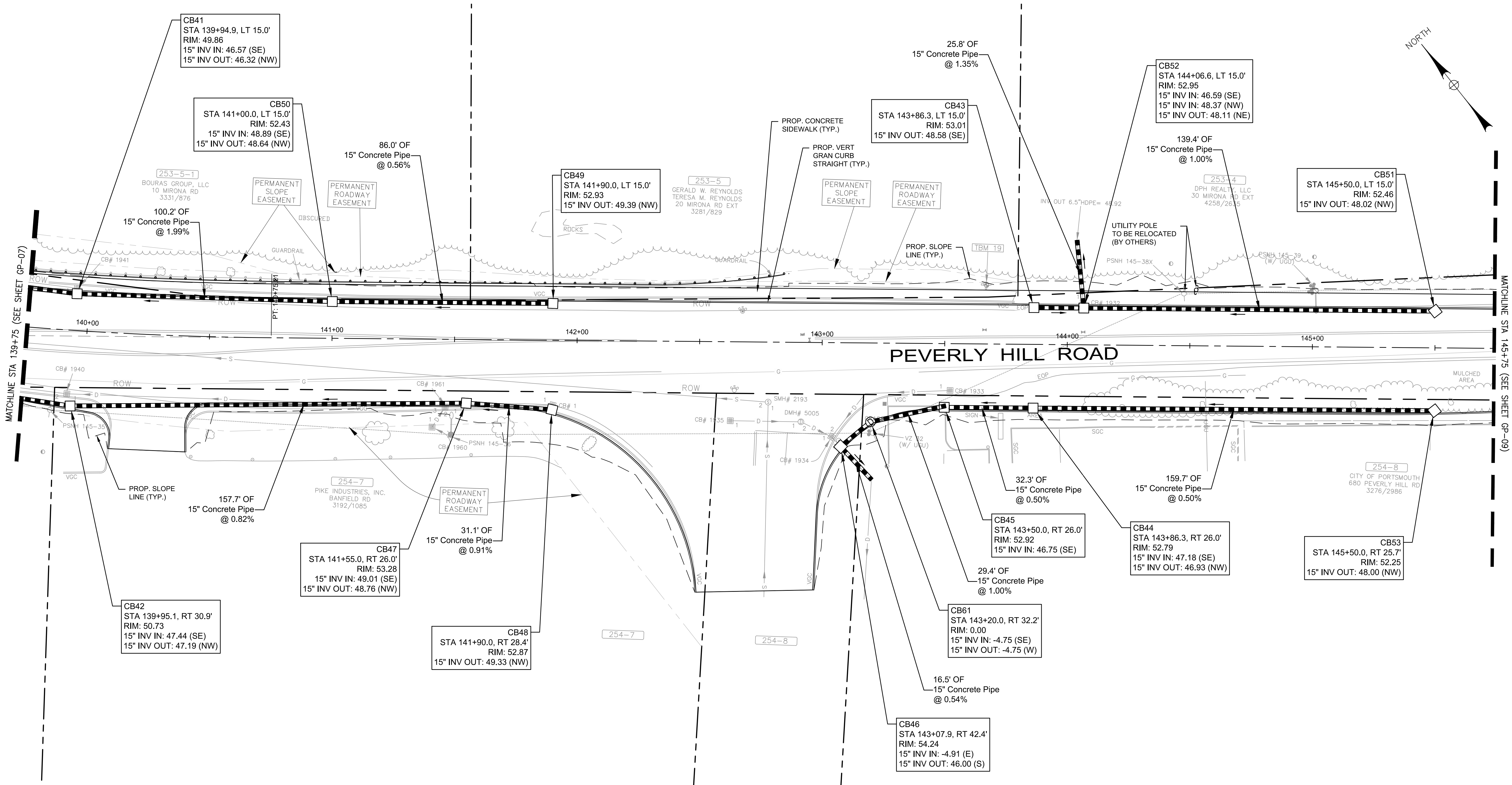
IT IS A VIOLATION OF LAW FOR ANY PERSON, UNLESS THEY ARE ACTING UNDER THE DIRECT DIRECTION OF A LICENSED PROFESSIONAL ENGINEER, ARCHITECT, LANDSCAPE ARCHITECT, OR LAND SURVEYOR, TO ALTER AN ITEM IN ANY WAY. IF AN ITEM BEARING THE STAMP OF A LICENSED PROFESSIONAL IS ALTERED, THE ALTERING ENGINEER, ARCHITECT, LANDSCAPE ARCHITECT, OR LAND SURVEYOR SHALL STAMP THE DOCUMENT AND INCLUDE THE NOTATION "ALTERED BY" FOLLOWED BY THEIR SIGNATURE, THE DATE OF SUCH ALTERATION, AND A SPECIFIC DESCRIPTION OF THE ALTERATION.

CITY OF PORTSMOUTH CITY OF PORTSMOUTH, NEW HAMPSHIRE		
PEVERLY HILL ROAD RECONSTRUCTION		
GENERAL PLAN (SHEET 6 OF 10)		
SCALE: AS SHOWN	DESIGN: MAH	GP-06 8 OF 72
DRAWN: MJF	PROJECT: 18082.01	
CHECKED: JWS	DATE: 07/20/2018	



McFarland Johnson
53 REGIONAL DRIVE
CONCORD, NH 03301





PRELIMINARY PLANS

IT IS A VIOLATION OF LAW FOR ANY PERSON, UNLESS THEY ARE ACTING UNDER THE DIRECT DIRECTION OF A LICENSED PROFESSIONAL ENGINEER, ARCHITECT, LANDSCAPE ARCHITECT, OR LAND SURVEYOR, TO ALTER AN ITEM IN ANY WAY. IF AN ITEM BEARING THE STAMP OF A LICENSED PROFESSIONAL IS ALTERED, THE ALTERING ENGINEER, ARCHITECT, LANDSCAPE ARCHITECT, OR LAND SURVEYOR SHALL STAMP THE DOCUMENT AND INCLUDE THE NOTATION "ALTERED BY" FOLLOWED BY THEIR SIGNATURE, THE DATE OF SUCH ALTERATION, AND A SPECIFIC DESCRIPTION OF THE ALTERATION.

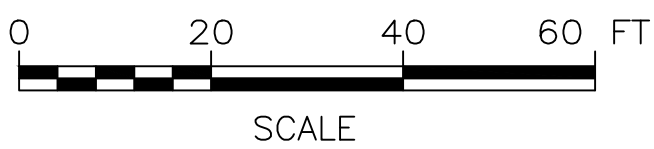
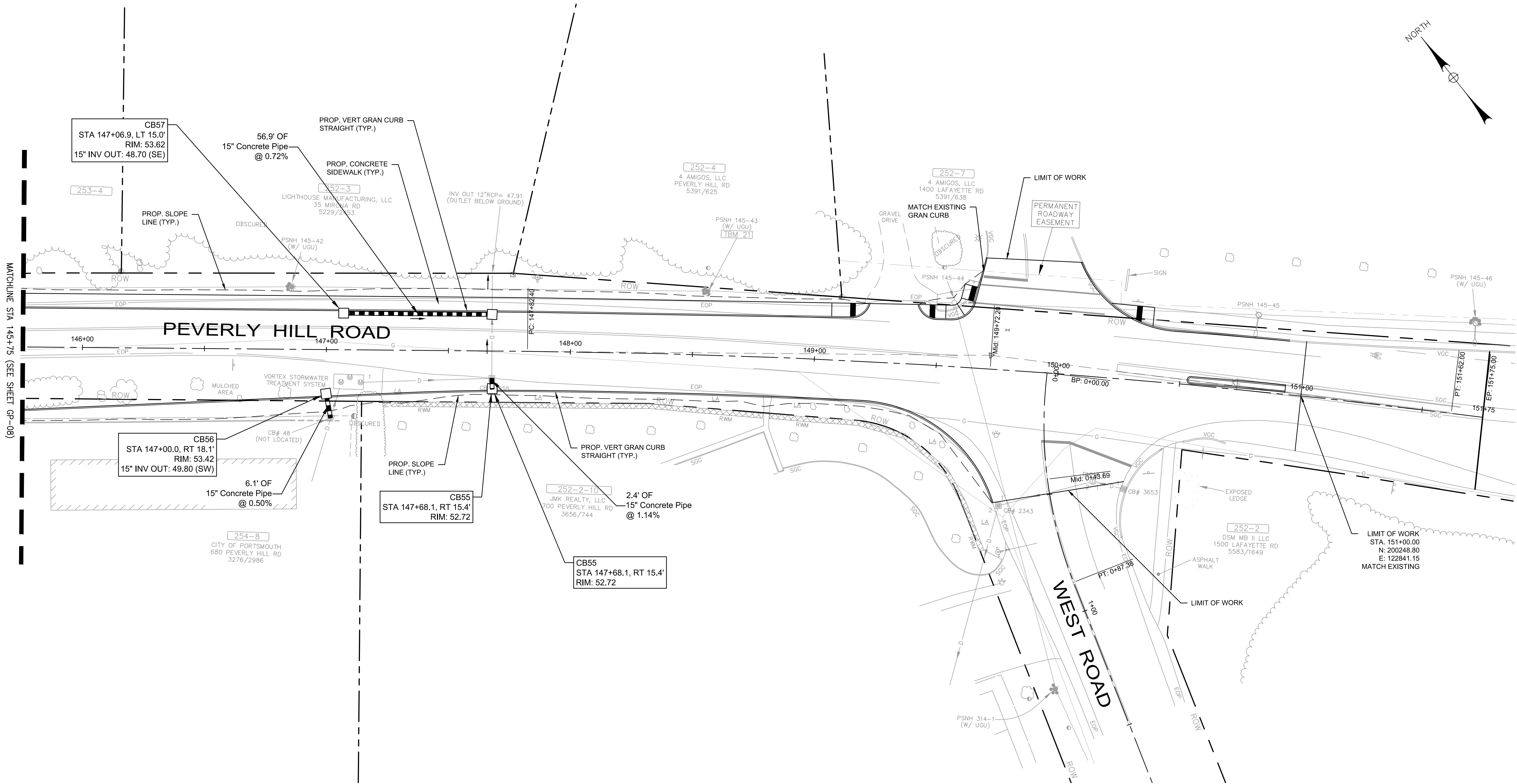


McFarland Johnson

53 REGIONAL DRIVE
CONCORD, NH 03301

REV	DATE	DESCRIPTION	BY

CITY OF PORTSMOUTH CITY OF PORTSMOUTH, NEW HAMPSHIRE PEVERLY HILL ROAD RECONSTRUCTION GENERAL PLAN (SHEET 8 OF 10)		
SCALE: AS SHOWN	DESIGN: MAH	GP-08 10 OF 72
DRAWN: MJF	PROJECT: 18082.01	
CHECKED: JWS	DATE: 07/20/2018	



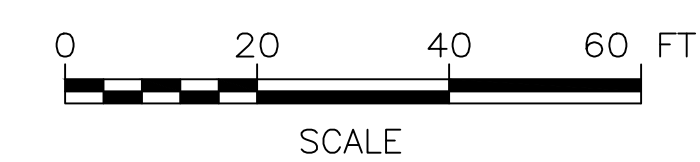
PRELIMINARY PLANS

IT IS A VIOLATION OF LAW FOR ANY PERSON, UNLESS THEY ARE ACTING UNDER THE DIRECT DIRECTION OF A LICENSED PROFESSIONAL ENGINEER, ARCHITECT, LANDSCAPE ARCHITECT, OR LAND SURVEYOR, TO ALTER AN ITEM IN ANY WAY. IF AN ITEM BEARING THE STAMP OF A LICENSED PROFESSIONAL IS ALTERED, THE ALTERING ENGINEER, ARCHITECT, LANDSCAPE ARCHITECT, OR LAND SURVEYOR SHALL STAMP THE DOCUMENT AND INCLUDE THE NOTATION "ALTERED BY" FOLLOWED BY THEIR SIGNATURE, THE DATE OF SUCH ALTERATION, AND A SPECIFIC DESCRIPTION OF THE ALTERATION.

				CITY OF PORTSMOUTH CITY OF PORTSMOUTH, NEW HAMPSHIRE		
				PEVERLY HILL ROAD RECONSTRUCTION		
				GENERAL PLAN (SHEET 9 OF 10)		
				SCALE: AS SHOWN	DESIGN: MAH	GP-09 11 OF 72
				DRAWN: MJF	PROJECT: 18082.01	
				CHECKED: JWS	DATE: 07/20/2018	




McFarland Johnson
53 REGIONAL DRIVE
CONCORD, NH 03301



PRELIMINARY PLANS

<p align="center">CITY OF PORTSMOUTH CITY OF PORTSMOUTH, NEW HAMPSHIRE</p> <p align="center">PEVERLY HILL ROAD RECONSTRUCTION</p> <p align="center">GENERAL PLAN (SHEET 10 OF 10)</p>		
SCALE: AS SHOWN	DESIGN: MAH	<p align="center">GP-10</p> <p align="center">12 OF 72</p>
DRAWN: MJF	PROJECT: 18082.01	
CHECKED: JWS	DATE: 07/20/2018	

REV	DATE	DESCRIPTION	BY
 McFarland Johnson 53 REGIONAL DRIVE CONCORD, NH 03301			