



GENERAL CONTRACTOR

STRUCTURAL ENGINEER

CIVIL ENGINEER

LANDSCAPE ARCHITECT

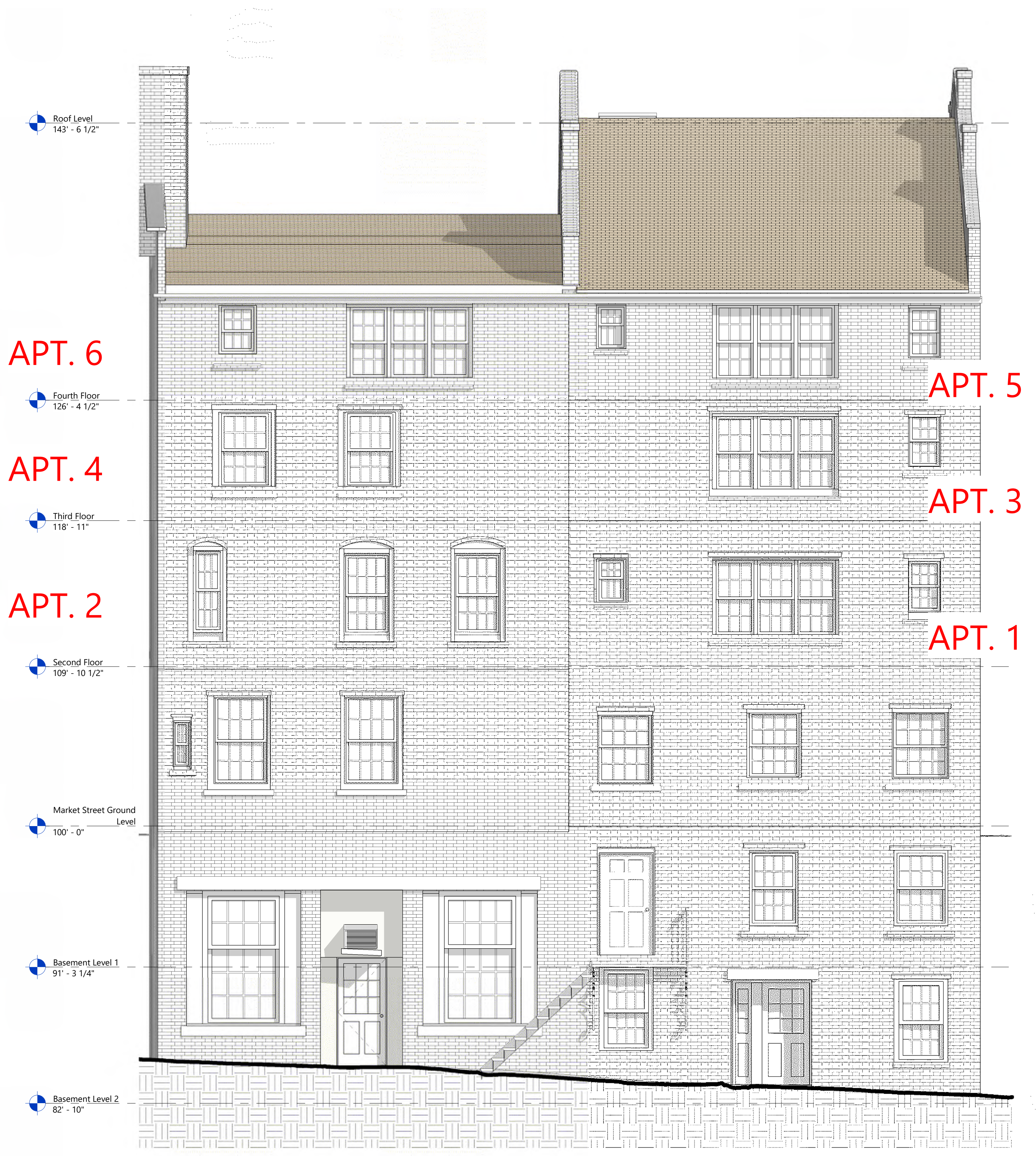
MECHANICAL ENGINEER

REVISION & REISSUE NOTES

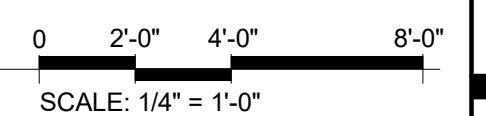
Rev # Date Description



EXISTING CERES STREET PHOTO REFERENCE IMAGE. NOT TO SCALE



1 Ceres Street Elevation
A201 1/4" = 1'-0"



HDC Submission

PROJECT NUMBER
24-047

95 Market Steet

95 Market Steet
Portsmouth, NH

Ceres Street Elevation

A201

Author: []
Checker: []
Scale: 1/4" = 1'-0"
Date: 01/07/2025







1.0 Item 21(Picture) falling parapet wall



1.0 Item 22(Picture) slate



1.0 Item 23(Picture) slate



1.0 Item 24(Picture) open chimneys



1.0 Item 11(Picture) slate



1.0 Item 12(Picture) slate