

John & Susan Durkin

(Homeowners)

564 Middle Street

Portsmouth, NH

603-828-4907

jdurkin@burnsbryant.com

HDC/Building Permit Application

1. Replace existing casement window with 15 lite, 36" X 80" inward swinging door. Black exterior. Andersen E Series – Full Divided Light.
2. Replace existing door with double hung, 2 over 2 window. Black exterior, Andersen E Series- Full Divided Light.
3. Replace existing single double hung window with (3) individual double hung, 2 over 2, windows, individually trimmed to match existing home with sidewall finished in cedar clapboards to match existing materials. Same windows (brand, size and construction) as #2 above. Black exterior. Andersen E Series- Full Divided Light
4. Replace existing 2 over 2 double hung window with double hung, 2 over 2, same window (brand, size and construction) as #2 and 3 above. Black exterior. Andersen E Series- Full Divided Light
5. Replace existing 2 over 2 double hung window with double hung, 2 over 2, same window (brand, size and construction) as #2, 3 and 4 above. Black exterior. Andersen E Series- Full Divided Light

Exterior framing of all windows and door to be done with wood, to match existing window frames.

Windows:

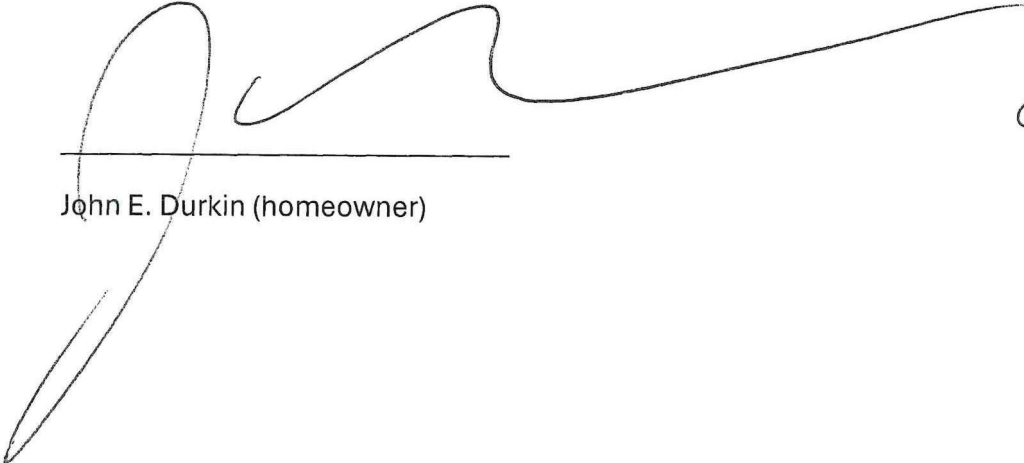
-all 6 windows will be same size, construction, brand. Andersen E Series, 2 over S, Full Divided Light, Black Exterior, 36" x 61"

*all six windows will be framed on exterior to match existing window frames.

Door: Andersen Series E 15 light door, Full Divided Light, Black Exterior. 36 x 80

Attachments:

1. Tax map, numbered to reference each paragraph above.
2. Proposed sketch, numbered to reference each paragraph above.
3. Brochure and technical specifications for Andersen E Series windows and door.
4. Spec Sheet for Andersen E Series windows and door.
5. Photographs of existing conditions:
 - a. Front of house from Middle Street.
 - b. Rear side showing areas for numbers 1 & 2.
 - c. Close up of 1, showing existing casement window.
 - d. Close up of 2, showing existing door.
 - e. Rear, showing existing window 3.
 - f. Driveway side of house, showing existing windows 4 & 5.
 - g. Close up of 4 & 5



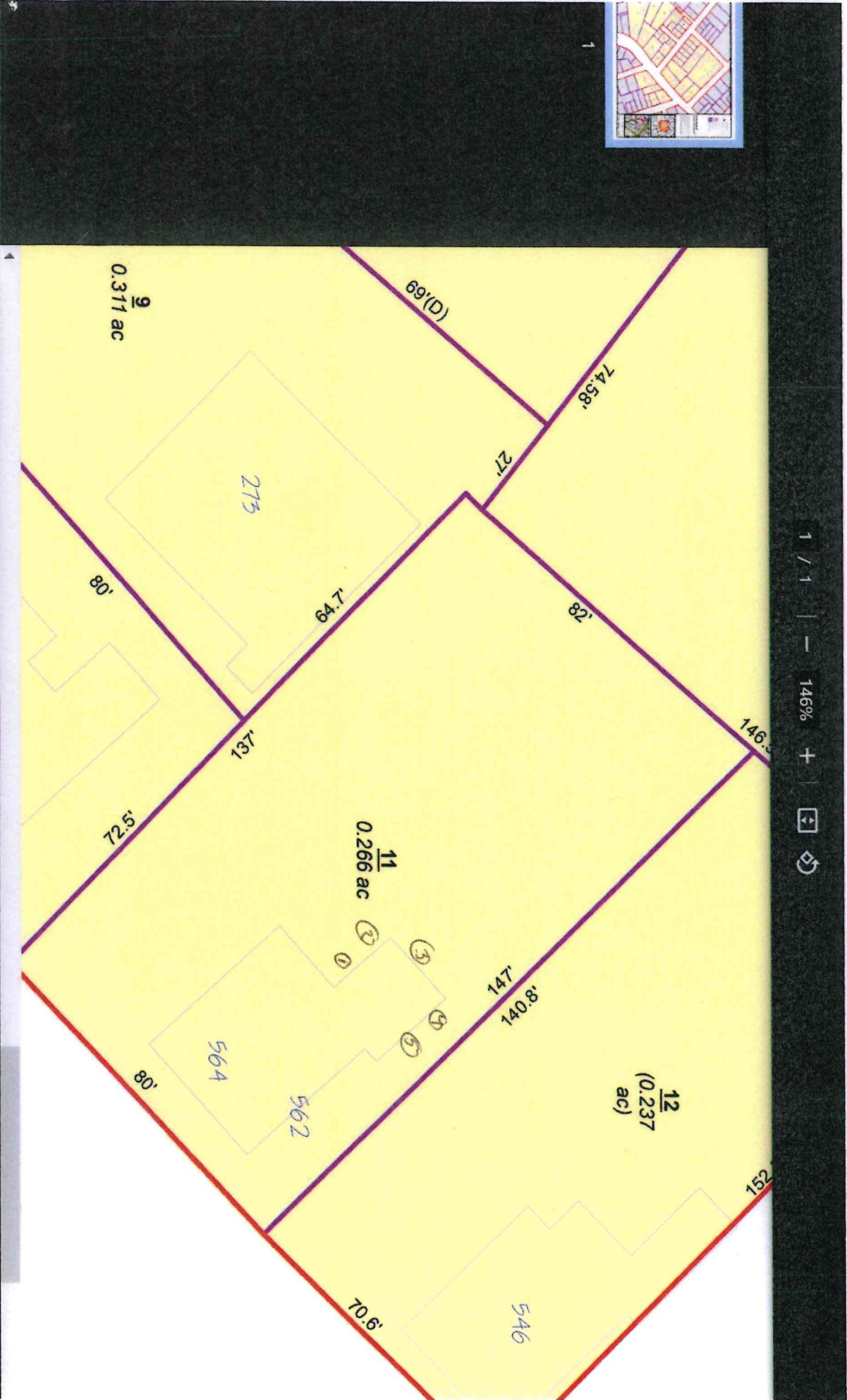
John E. Durkin (homeowner)

8/13/24

564 middle st.

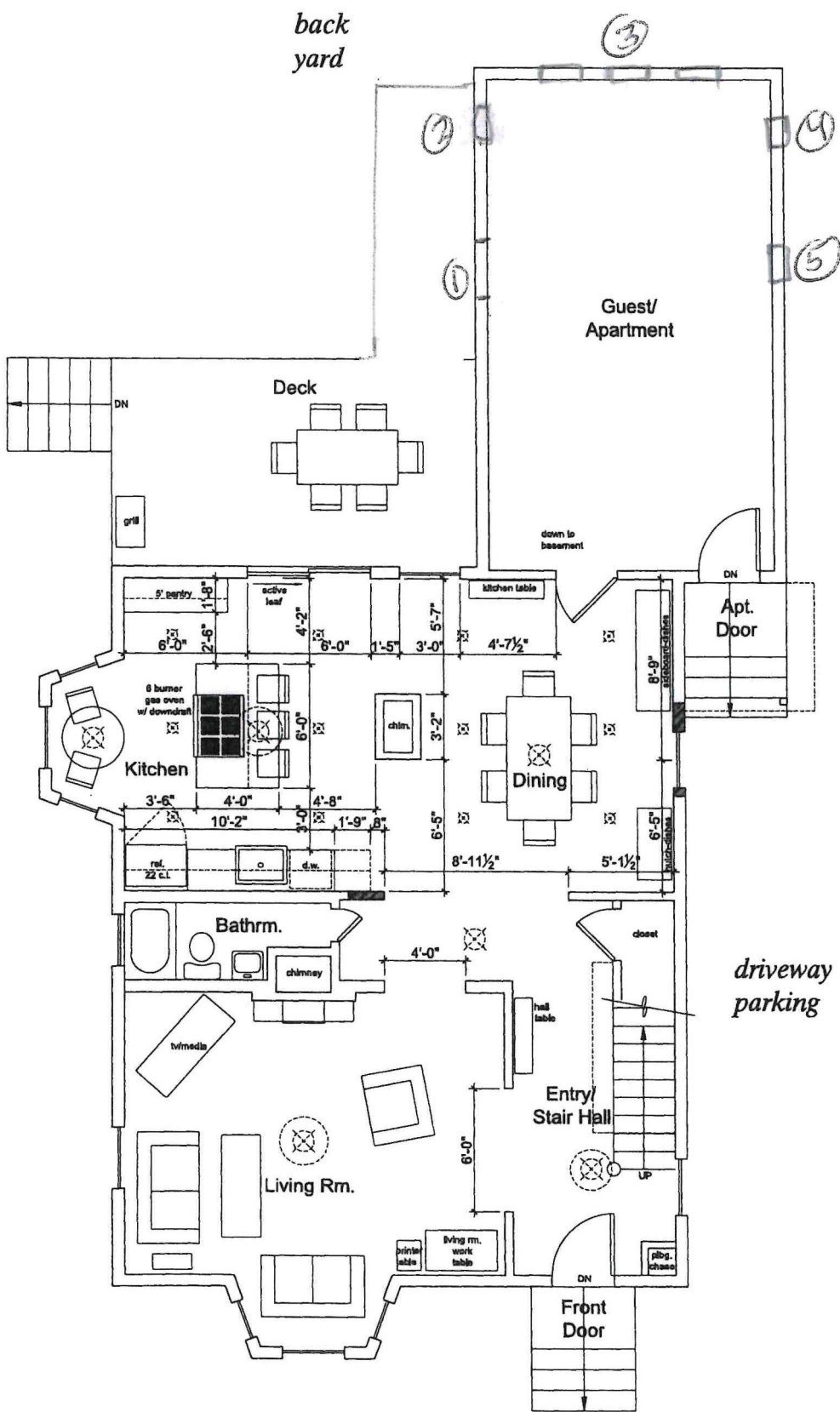
files.cityofportsmouth.com/maps/taxmaps/147.pdf

Portsmouth | City of Portsmouth 147.pdf Property - City of Portsmouth



here to search

Taskbar with icons for File Explorer, Microsoft Word, Microsoft Excel, Google Chrome, and weather information: 72°F Mostly sunny.

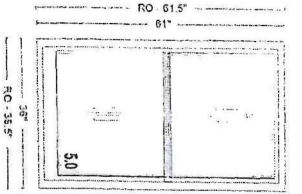


1. New 36 x 80 door
2. New window
3. (3) New windows
4. Replace existing window
5. Replace existing window

564 Middle Street

Proposed First Floor Plan



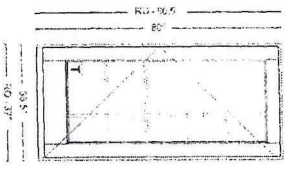


Item	Qty	Operation	Location	Unit Price	Ext. Price
400	6	Active/Active	None Assigned	\$1,264.89	\$7,589.34
RO Size: 36 1/2" x 61 1/2" Unit Size: 36" x 61"					

TCLDH3051, Unit, E-Series Double-Hung, Equal Sash, 4 9/16" Frame Depth, Rigid Vinyl w/Integral Vinyl Drip Cap, Black 2604 Exterior Frame, Black 2604 Exterior Sash/Panel, Pine w/White - Painted Interior Frame, Pine w/White - Painted Interior Sash/Panel, Active/Active, Dual Pane Low-E4 Standard Argon Fill Full Divided Light (FDL) 2 Wide, 1 High, Specified Equal Light Pattern, Black, 2604, Pine w/White - Painted, Chamfer Exterior Grille Bar/Ovolo Interior Grille Bar, 5/8" Grille Bar, Ovolo Glass Stop Black Glass / Grille Spacer, 2 Sash Locks Black, WhiteJamb Liner, Clad Exterior / Wood InteriorJamb Liner Inserts, Black, 2604, Full, TruScene

Insect Screen 1: E-Series Double-Hung, TCLDH3051 Full TruScene Black 2604

Unit #	U-Factor	SHGC	ENERGY STAR Clear Opening/Unit #	Width	Height	Area (Sq. Ft)	
A1	0.32	0.27	NO	A1	31.6875	24.2500	5.33630



Item	Qty	Operation	Location	Unit Price	Ext. Price
200	1	Left	None Assigned	\$3,073.97	\$3,073.97
RO Size: 37" x 80 1/2" Unit Size: 36 1/2" x 80"					

AFDI3068, Unit, E-Series Inswing Door-1 Panel-French, Standard Panel, 4 9/16" Frame Depth, Factory Assembled, Rigid Vinyl w/Integral Vinyl Drip Cap, Dark Bronze Anodized On-Floor Drainage Sill, 4 11/16" Sill Width, 4 11/16" Top Rail Height, 8" Bottom Rail Height, Black 2604 Exterior Frame, Black 2604 Exterior Sash/Panel, Pine w/White - Painted Interior Frame, Pine w/White - Painted Interior Sash/Panel, Left, Dual Pane Low-E4 Tempered Argon Fill Full Divided Light (FDL) 3 Wide, 5 High, Specified Equal Light Pattern, Black, 2604, Pine w/White - Painted, Chamfer Exterior Grille Bar/Ovolo Interior Grille Bar, 5/8" Grille Bar, Ovolo Glass Stop Black Glass / Grille Spacer, Multi-Point - Installed, Newbury, Satin Nickel, Stainless Steel, Exterior Keyed Lock

Trim Set 1: AFDI Left Newbury Satin Nickel PN:2579443

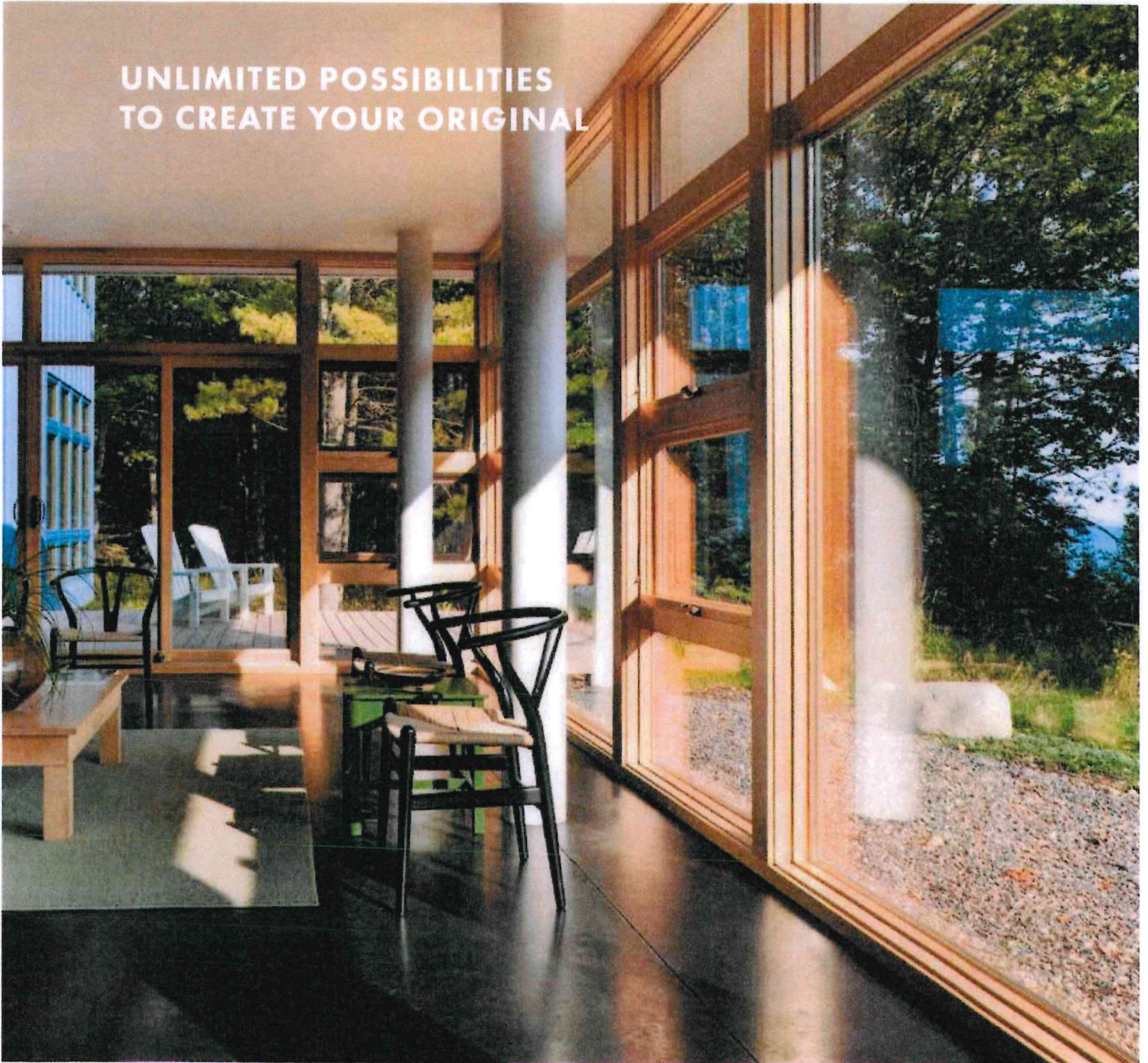
Exterior Keyed Lock 1: AFDI LH Newbury Satin Nickel PN:2579457

Unit #	U-Factor	SHGC	ENERGY STAR Clear Opening/Unit #	Width	Height	Area (Sq. Ft)	
A1	0.33	0.21	NO	A1	32.0000	76.3750	16.9722



E-SERIES
Architectural Collection

UNLIMITED POSSIBILITIES
TO CREATE YOUR ORIGINAL





E-SERIES WINDOWS & PATIO DOORS

The inspiration for your home can come from anywhere and with E-Series windows and patio doors from Andersen, you'll find custom colors, unlimited design options and dynamic sizes and shapes to create the home you've always imagined.

Whether you're looking to make a design statement or to simply recreate a classic, E-Series products give you more freedom to use your imagination and create your personal vision of home. And like all Andersen products, they are supported by over 115 years of commitment to quality and service that can only come from one of the most trusted names in the industry. For more information, please visit andersenwindows.com/e-series.





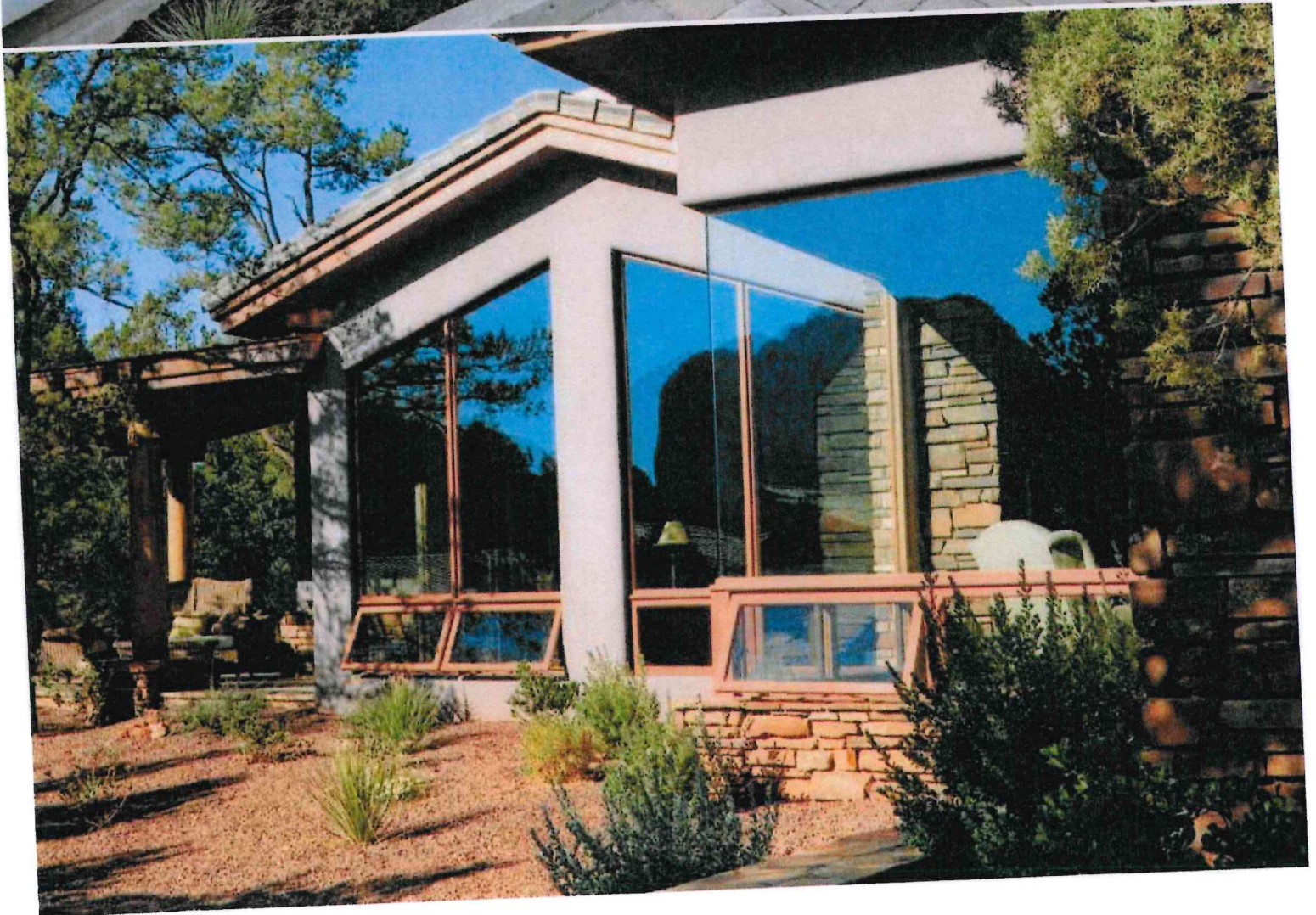
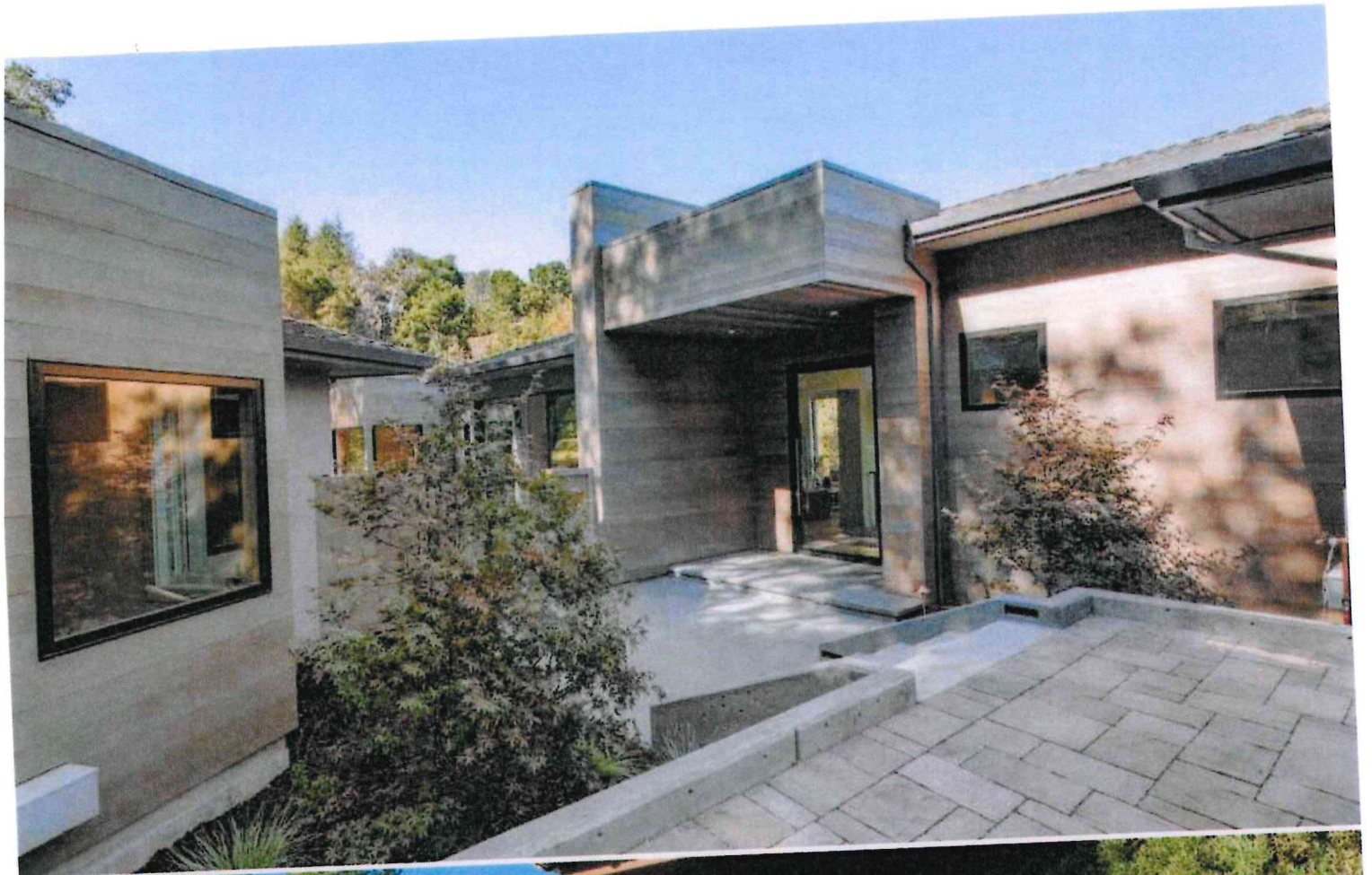
FSB® hardware features clean lines in a satin finish for a thoroughly modern look.



Dark colors and narrow profile options on windows, patio doors and grille options offer a truly contemporary style.

MODERN STYLE MADE EASY

Modern home styles incorporate clean lines, simple forms and open floor plans. They often feature floor-to-ceiling windows or glass doors with narrow profiles to maximize light and bring the outdoors in. Explore our Home Style library to see how E-Series products can help you achieve a modern home style. Visit andersenwindows.com/stylelibrary to learn more.



DO YOU DREAM IN COLOR?

While our large selection of 50 exterior colors covers a lot of ground, inspiration comes in infinite hues. Let us match a paint chip, a photograph or a favorite work of art to bring your dream color into the light of day. Or, choose from a selection of anodized finishes for a rich, lustrous metallic appearance that cannot peel or flake and is not affected by sunlight.

EXTERIOR COLORS



7 ANODIZED FINISHES



Design your window at
andersenwindows.com/design-tool

CUSTOM EXTERIORS OR 2-, 3- AND 4-TONE EXTERIORS

Choose a custom exterior color to get just the right color for your design. And, with our 2-, 3- and 4-tone color combinations, the sky's the limit. Mix and match up to four of our 50 exterior colors for a combination look that's all your own.



Colony white and black

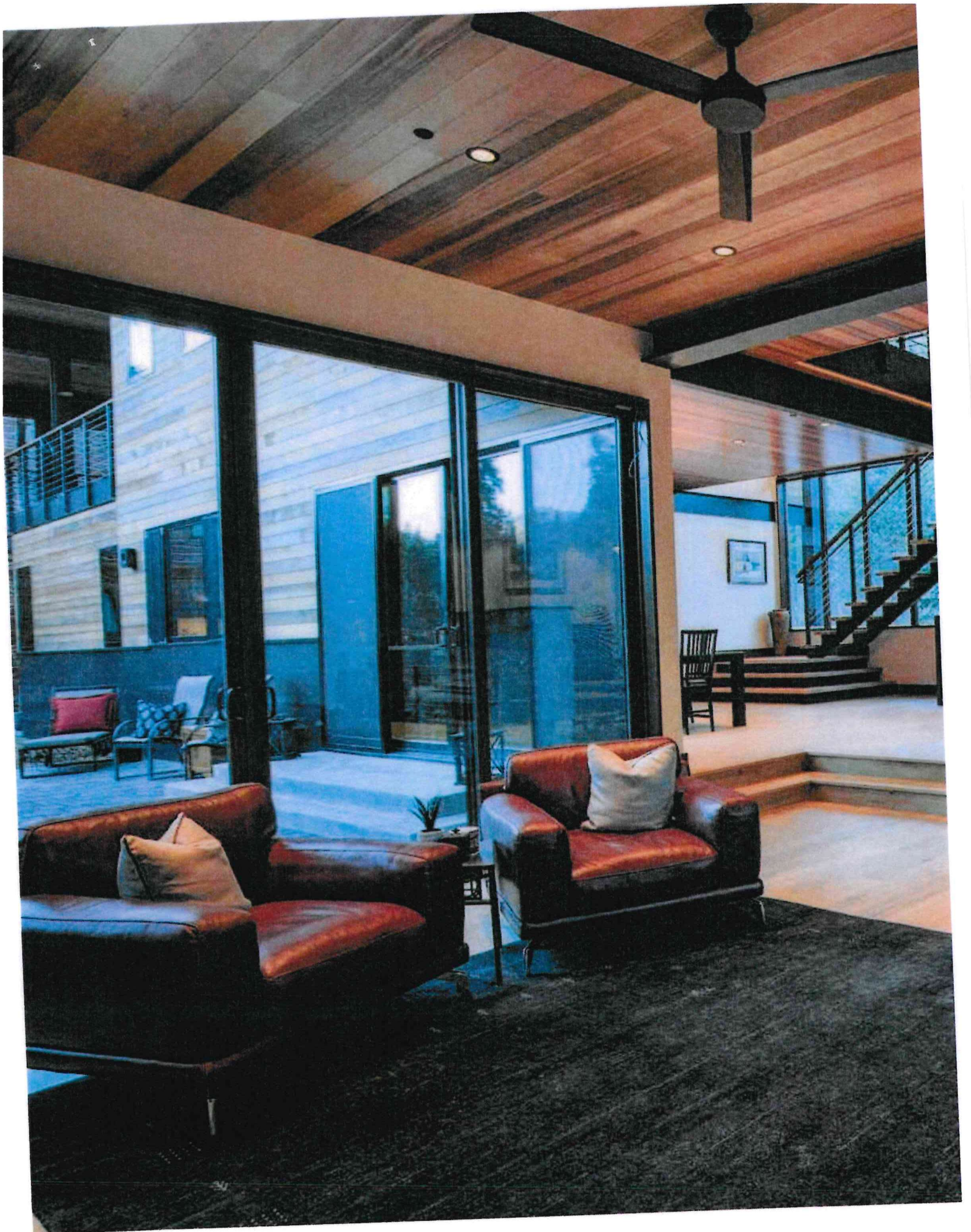
EXTERIOR TRIM

Choose exterior trim in either a flat casing, brick mould or sill nosing profile to add curb appeal to your home.



2" brick mould and 1 1/2" sill nose, shown on a casement window

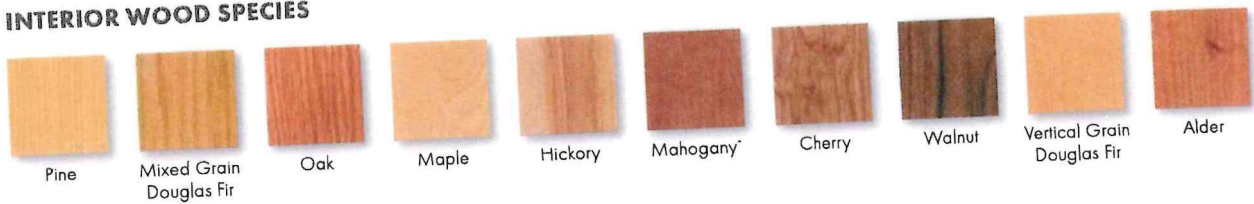
*Visit andersenwindows.com/warranty for details. Printing limitations prevent exact color duplication. Please see your Andersen supplier for actual color samples.



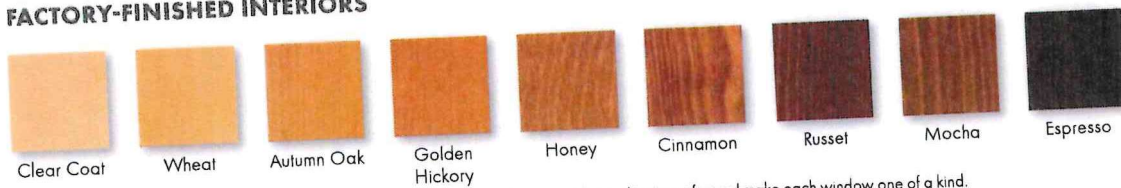
A RANGE OF INTERIORS — INCLUDING YOURS

Our distinctive woods add uncommon flair to any room. Each wood species has its own character, grain and staining capabilities so you can select one that makes your windows stand out or one that matches with your interior décor. Our high-quality, factory-applied stains offer you convenience along with beauty. Choose from a variety of wood finishes or select one of our painted options. Or for a natural look, select our clear coat option.

INTERIOR WOOD SPECIES



FACTORY-FINISHED INTERIORS



All interior finish options are shown on pine. Naturally occurring variations in grain, color and texture of wood make each window one of a kind.

INTERIOR PAINTED OPTIONS



Available on pine.

CUSTOM INTERIORS

Need an exotic wood species to complete your home or a special finish for just the right look or to match existing woodwork? We offer custom wood species and custom stain, paint or color matching for just the right finish to your design.

*Actual wood species is either Sapele or Sipo, both non-endangered species grown in Africa, with color and characteristics similar to Central American mahoganies.
 **Dark bronze and black also available on maple.
 †Anodized silver is available on maple only.
 Printing limitations prevent exact replication of colors and finishes. Please see your Andersen supplier for actual color and finish samples.



DESIGN VERSATILITY

Extruded aluminum's strength and versatility allow us to offer beautiful made-to-order design solutions for practically any combination of shapes and styles you can imagine. And because our exterior frame, sash and trim components utilize extruded aluminum, our products feature clean, architecturally accurate lines and details to complement your home's style.

ENERGY-SAVING GLASS

We have the glass you need to get the performance you want, including a variety of Low-E4® glass options to help control heating and cooling costs in any climate.

LOW-MAINTENANCE EXTERIORS

Baked-on silicone polyester enamel exteriors offer virtually maintenance-free performance and durability. They're warranted for 10 years against chalking and color change and for 20 years against cracking, checking, peeling, flaking, blistering and loss of adhesion.*

BUILT STRONG

E-Series windows and patio doors are made with heavy-gauge, extruded aluminum-clad wood sash and frames. Our thick cladding offers greater structural capabilities than thinner, roll-form aluminum, while providing a superior exterior finish that resists the elements of inclement weather, abrasion and impact.

BUILT FOR YEARS TO COME*

Most other window and patio door warranties end when a home is sold, but our coverage — 20 years on glass, 10 years on non-glass parts — transfers from each owner to the next. And because it is not prorated, the coverage offers full benefits, year after year, owner after owner.* So it adds real value when you decide to sell your home.

OWNER2OWNER
LIMITED WARRANTY

*Visit andersenwindows.com/warranty for details.

BEST-IN-CLASS GLASS

Glass can affect energy efficiency more than any other part of a window or patio door — and not all glass performs the same. Some types of glass do a better job at insulating your home. Others provide greater clarity. You can even choose glass to filter out specific kinds of light. Andersen offers one of the industry’s widest arrays of glass options, enabling you to find the right choice for your climate and your home. Choose from these High-Performance glass options.

GLASS	ENERGY		LIGHT	
	U-Factor How well a product prevents heat from escaping.	Solar Heat Gain Coefficient How well a product blocks heat caused by sunlight.	Visible Light Transmittance How much visible light comes through a product.	UV Protection How well a product blocks ultraviolet rays.
SmartSun™ Thermal control similar to tinted glass, with visible light transmittance similar to Low-E4 glass.	● ● ● ● ○	● ● ● ● ●	● ● ● ● ○	● ● ● ● ●
SmartSun with HeatLock® Coating Applied to the room-side surface, it reflects heat back into the home and improves U-factors values.	● ● ● ● ●	● ● ● ● ●	● ● ● ● ○	● ● ● ● ●
Low-E4® Outstanding overall performance for climates where both heating and cooling costs are a concern.	● ● ● ● ○	● ● ● ● ○	● ● ● ● ○	● ● ● ● ○
Low-E4 with HeatLock Coating Applied to the room-side surface, it reflects heat back into the home and improves U-factor values.	● ● ● ● ●	● ● ● ● ○	● ● ● ● ○	● ● ● ● ○
Sun Outstanding thermal control in southern climates where less solar heat gain is desired.	● ● ● ● ○	● ● ● ● ●	● ● ● ● ○	● ● ● ● ○
PassiveSun® Ideal for northern, passive solar construction applications where solar heat gain is desired.	● ● ● ● ○	● ○ ○ ○ ○	● ● ● ● ○	● ● ● ● ○
Triple-Pane with Low-E coatings on two surfaces Three panes of glass combine with either argon gas blend air or Low-E coatings to provide enhanced energy performance.	● ● ● ● ●	● ● ● ● ○	● ● ● ● ○	● ● ● ● ●
Clear Dual-Pane High visibility with basic thermal performance.	● ○ ○ ○ ○	○ ○ ○ ○ ○	● ● ● ● ●	○ ○ ○ ○ ○

Center of glass performance only. Ratings based on glass options as of May 2021. Visit andersenwindows.com/energystar for ENERGY STAR® map and NFRC total unit performance data.

HEATLOCK® TECHNOLOGY

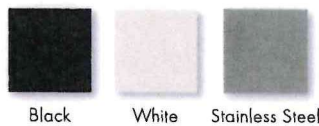
Our HeatLock coating can increase the energy efficiency of any E-Series window or patio door with Low-E4 or SmartSun glass. Applied to the room-side glass surface, it reflects heat back into the home for improved performance.

SPECIALTY GLASS

Select from our decorative glass collections or combine beveled, frosted, grooved, colored or textured glass with three coming options to create your own design. Specialty glass includes tinted glass, spandrel glass and Mapes panels as well as rain, reeded, satin etch and obscure glass options.

GLASS SPACER OPTIONS

Choose from stainless steel, black or white glass spacers to create a customized look. Add full divided light grilles and the grille spacer bar between the glass will match the selected glass spacer color.



STORMWATCH® PATIO DOORS

Andersen® E-Series patio doors are available with impact-resistant glass and structural upgrades to meet the tough building codes of hurricane-prone coastal areas. Visit andersenwindows.com/coastal for more information and see your local building code official for specific requirements in your area.



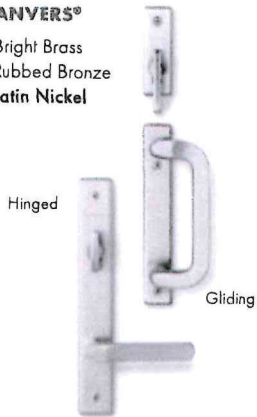
For more details on glass options, visit andersenwindows.com/glass.



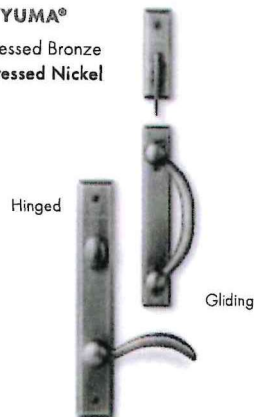
DESIGNS TO MATCH ANY STYLE

E-Series patio door hardware* is available in a variety of different designs to match virtually any style. Additional hardware options such as exterior keyed locks, matching hinge finishes and more are also available.

ANVERS®
Bright Brass
Oil Rubbed Bronze
Satin Nickel



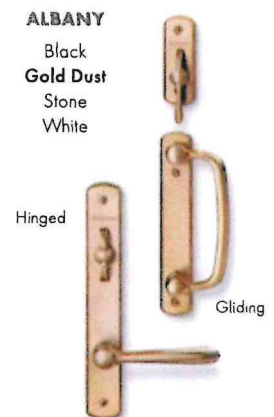
YUMA®
Distressed Bronze
Distressed Nickel



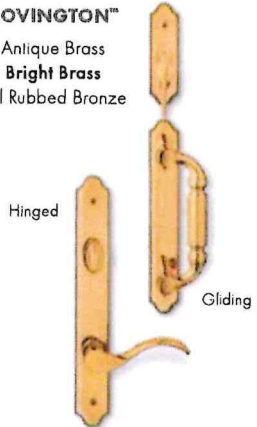
NEWBURY®
Antique Brass
Bright Brass
Brushed Chrome
Oil Rubbed Bronze
Polished Chrome
Satin Nickel



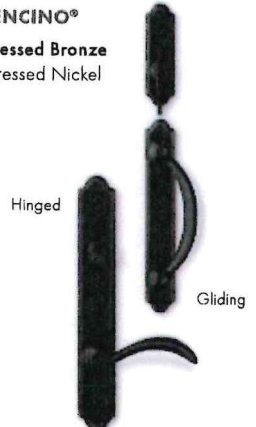
ALBANY
Black
Gold Dust
Stone
White



COVINGTON™
Antique Brass
Bright Brass
Oil Rubbed Bronze



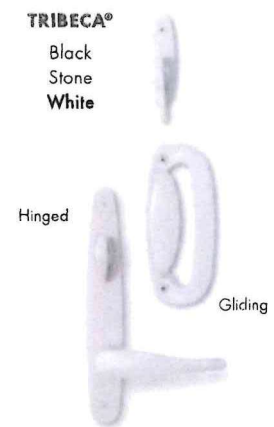
ENCINO®
Distressed Bronze
Distressed Nickel



WHITMORE®
Antique Brass
Bright Brass
Oil Rubbed Bronze
Satin Nickel



TRIBECA®
Black
Stone
White



Bold name denotes finish shown.

HARDWARE FINISHES



*Hardware sold separately.

Tribeca and Albany hardware are zinc die cast with powder-coated durable finish. Other hardware is solid forged brass. Distressed bronze and oil rubbed bronze are "living" finishes that will change with time and use. Bright brass and satin nickel finishes on patio door hardware feature a 10-year limited warranty. Matching hinges available in most finishes for inswing patio doors. Printing limitations prevent exact finish replication. See your Andersen supplier for actual finish samples.

DETAILS THAT MAKE AN IMPACT

E-Series window hardware* offers you the styles and finishes to enhance or complement any home's décor and style.

Casement & Awning



Operator Handle & Cover

Antique Brass | Black | Bright Chrome
Bronze | Gold | Oil Rubbed Bronze | Pewter
Polished Brass | Satin Chrome | White

French Casement



Operator Handle & Cover



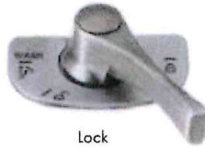
Sash Lock

Antique Brass | **Black**
Bright Chrome | Bronze
Polished Brass
Satin Chrome | White

Double-Hung



Sash Lift



Lock

Antique Brass | Black | Bright Chrome | Bronze | Gold
Oil Rubbed Bronze | **Pewter** | Polished Brass | Satin Chrome | White

Gliding Windows

Antique Brass
Black | Bright Chrome
Bronze | Gold
Oil Rubbed Bronze
Pewter | Polished Brass
Satin Chrome | White



Lock



Slim Line Sash Pull

Bold name denotes finish shown.

HARDWARE FINISHES



Antique Brass | Black | Bright Chrome | Bronze | Gold | Oil Rubbed Bronze | Pewter | Polished Brass | Satin Chrome | White

*Hardware sold separately.

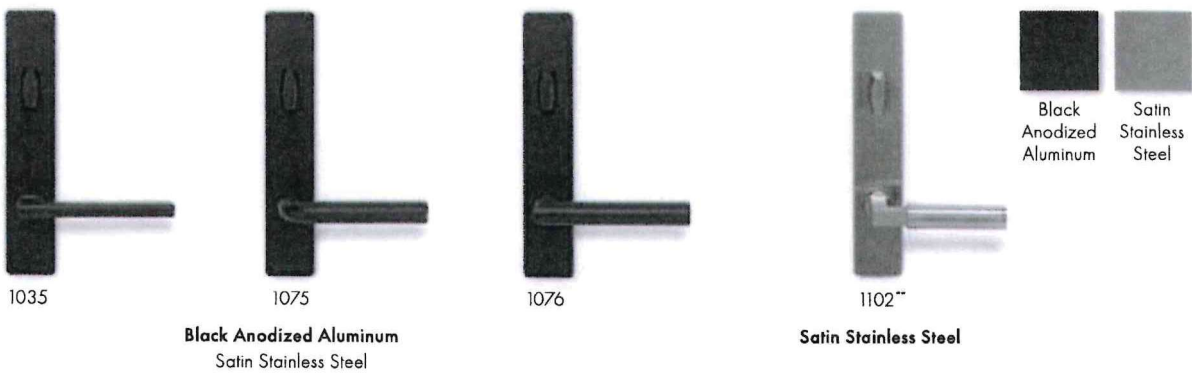
Oil rubbed bronze is a "living" finishes that will change with time and use.

Printing limitations prevent exact finish replication. See your Andersen supplier for actual finish samples.



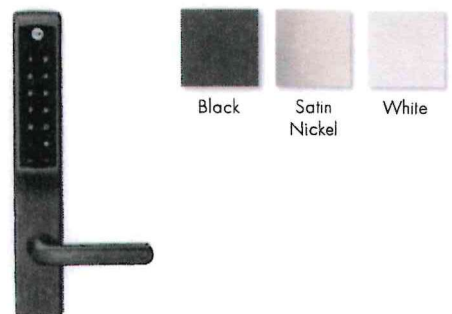
FSB® HINGED PATIO DOOR HARDWARE

Durable FSB hinged door hardware* features clean lines and a sleek finish for a thoroughly modern look.



YALE® ASSURE LOCK®

Monitor, lock and unlock from anywhere with the Yale Assure Lock.† This slim, sleek keyless lock is designed exclusively for Andersen® hinged patio doors† and integrates with a wide range of smart home platforms.



*Hardware sold separately.

**FSB style 1102 is not available in black anodized aluminum.

†Available on select hinged doors, see your Andersen supplier for details.

Printing limitations prevent exact finish replication. See your Andersen supplier for actual finish samples.

All marks where denoted are trademarks of their respective owners. Yale manufactures and supports the limited warranty for Yale Assure Lock for Andersen patio doors.

BETWEEN-THE-GLASS BLINDS & SHADES

Privacy options you simply have to see. E-Series blinds or shades between the glass provide the ultimate in practicality for your home. Our systems not only protect the blinds or shades, they also greatly reduce your cleaning time. Which means with Andersen, you have both privacy and convenience at your fingertips.



System 3 Shades

System 3 Blinds

BLINDS-BETWEEN-THE-GLASS

Blinds-between-the-glass can be added to many of our patio doors and rectangular picture windows. The blinds are placed between two panes of glass, available in three popular colors and can tilt, raise or lower* conveniently with a single control cord.



Control Cord

Blinds



Almond

Tan

White

SYSTEM 3 BLINDS & SHADES

System 3 blinds and shades create a triple-glazed window that provides greater energy efficiency and protects your blind or shade from damage. They are perfect for casement, awning and picture windows, and hinged patio doors. Frames are available in tan, gold, white or wood veneer.

Blinds



Almond

Tan

White

Shades



Almond

Pearl

Vanilla

Winter White

Control Knobs



Bronze

White

Black

Gold

*Not all sizes of blinds-between-the-glass are retractable.

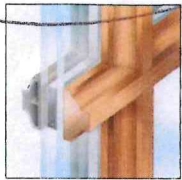
Printing limitations prevent exact color duplication. Please see your Andersen supplier for actual color samples.

ARCHITECTURALLY AUTHENTIC GRILLES

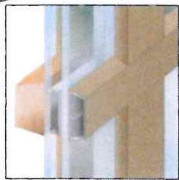
We offer a variety of grille styles and patterns to choose from, or design your own with varying lines, curves and shapes.

FULL DIVIDED LIGHT

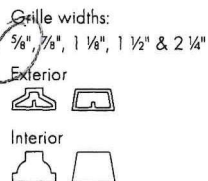
Features permanent interior and exterior grilles with grille spacer bars between two panes of insulating glass. A traditional divided light look with modern energy efficiency.



Chamfer -
Ovolo (colonial)



Contemporary -
Contemporary

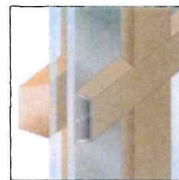


SIMULATED DIVIDED LIGHT

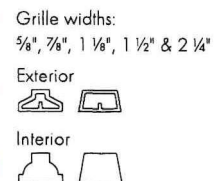
An economical solution featuring permanent interior and exterior grilles without grille spacer bars.



Chamfer -
Ovolo (colonial)

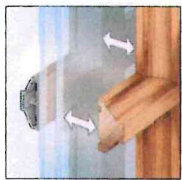


Contemporary -
Contemporary

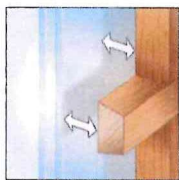


REMOVABLE INTERIOR WOOD GRILLES

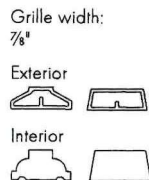
Removable interior wood grilles. Available with optional surround and an optional permanent exterior grille, shown to left below.



Chamfer -
Ovolo (colonial)

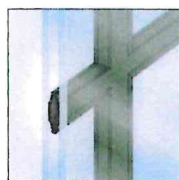


Contemporary

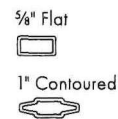


FINELIGHT™ GRILLES-BETWEEN-THE-GLASS

Aluminum grilles conveniently placed between two panes of glass for easy cleaning inside and out.



Contoured



Flat grilles are available in colony white, sierra bronze, pebble tan and forest green.

Contoured grilles are available in all 50 colors and two-tone combinations. colony white paired with black, sierra bronze, pebble tan or forest green.

SCREEN OUT THE INSECTS, NOT THE VIEW

E-Series insect screens let the beauty of the outdoors in, while keeping even small insects out. Choose from a wide selection of insect screen styles, including options that blend seamlessly with your window.

TRUSCENE® INSECT SCREENS*

TruScene insect screens for windows are made with a micro-fine stainless steel mesh that offers 50% more clarity than our conventional aluminum mesh insect screens. TruScene insect screens let in 25% more fresh air,** all while keeping out unwanted small insects.

WOOD VENEER INSECT SCREENS

For a clean appearance, E-Series interior window insect screens can feature a wood veneer to blend into your window.

RETRACTABLE INSECT SCREENS FOR WINDOWS AND PATIO DOORS

Retractable insect screens for casement and awning windows offer a sleek addition to any home. In place, the insect screen keeps insects out. When retracted, it provides a beautiful clear view.

For patio doors†, retractable insect screens are built with an innovative color-matched housing that hides the insect screen when not in use. It's there when you need it and gone when you don't.

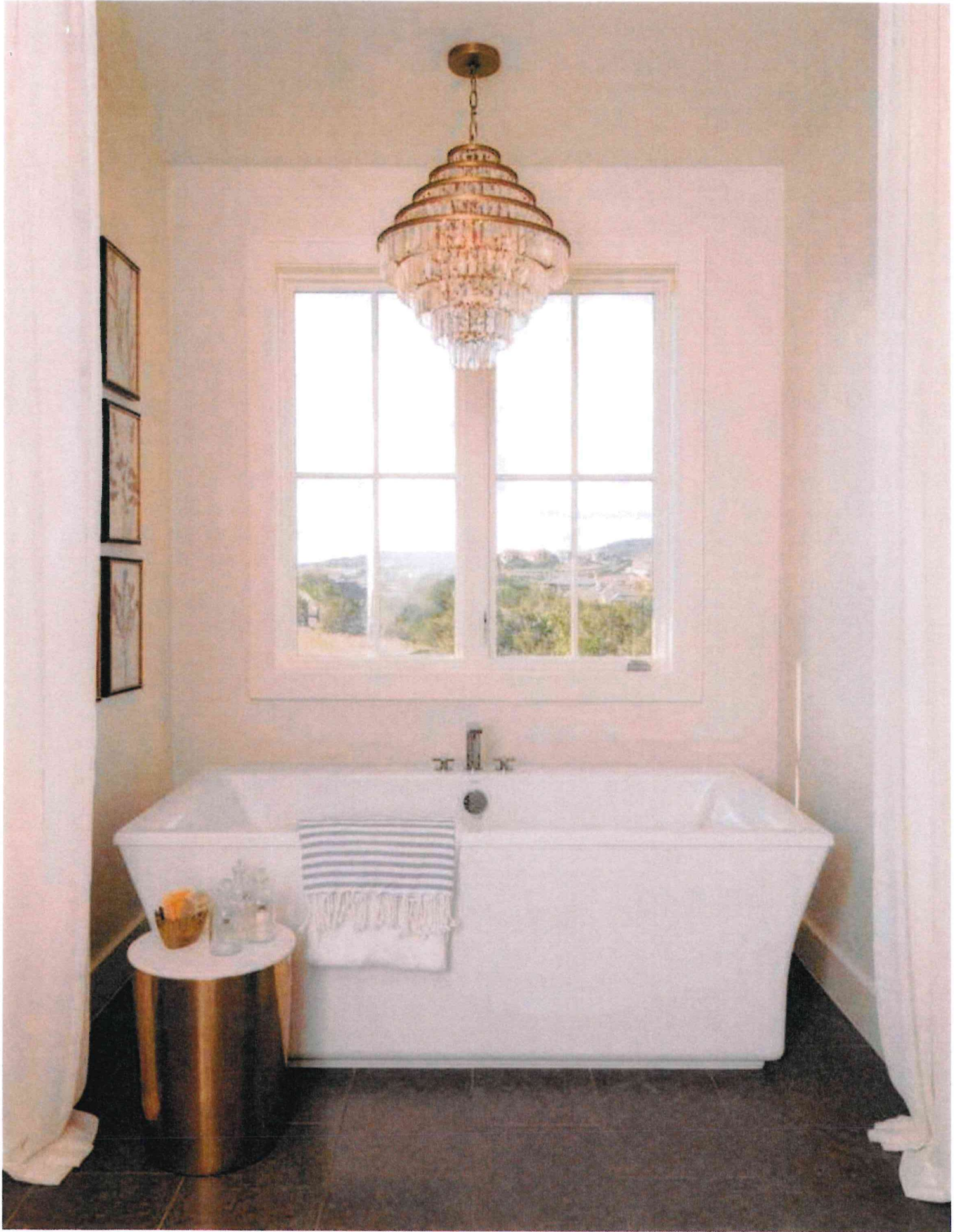


Retractable insect screen for casement and awning windows.

*TruScene wood-veneered insect screens utilize a different frame profile than other E-Series wood-veneered insect screens.

**TruScene insect screens let in over 25% more fresh air than standard Andersen fiberglass insect screens.

†Retractable insect screens are available on hinged inswing, hinged outswing and gliding patio doors. See your Andersen supplier for details.





THE ENVIRONMENT HAS A BUSINESS PARTNER

Respect for the environment is nothing new at Andersen. For more than a century, it's been part of who we are. Our commitment to recycle and reclaim materials began simply because it was good business. Now it's part of our broader commitment to sustainability and responsible stewardship of all our resources. Andersen is committed to providing you with long-lasting,* energy-efficient windows and doors. Visit andersenwindows.com/sustainability for more information.



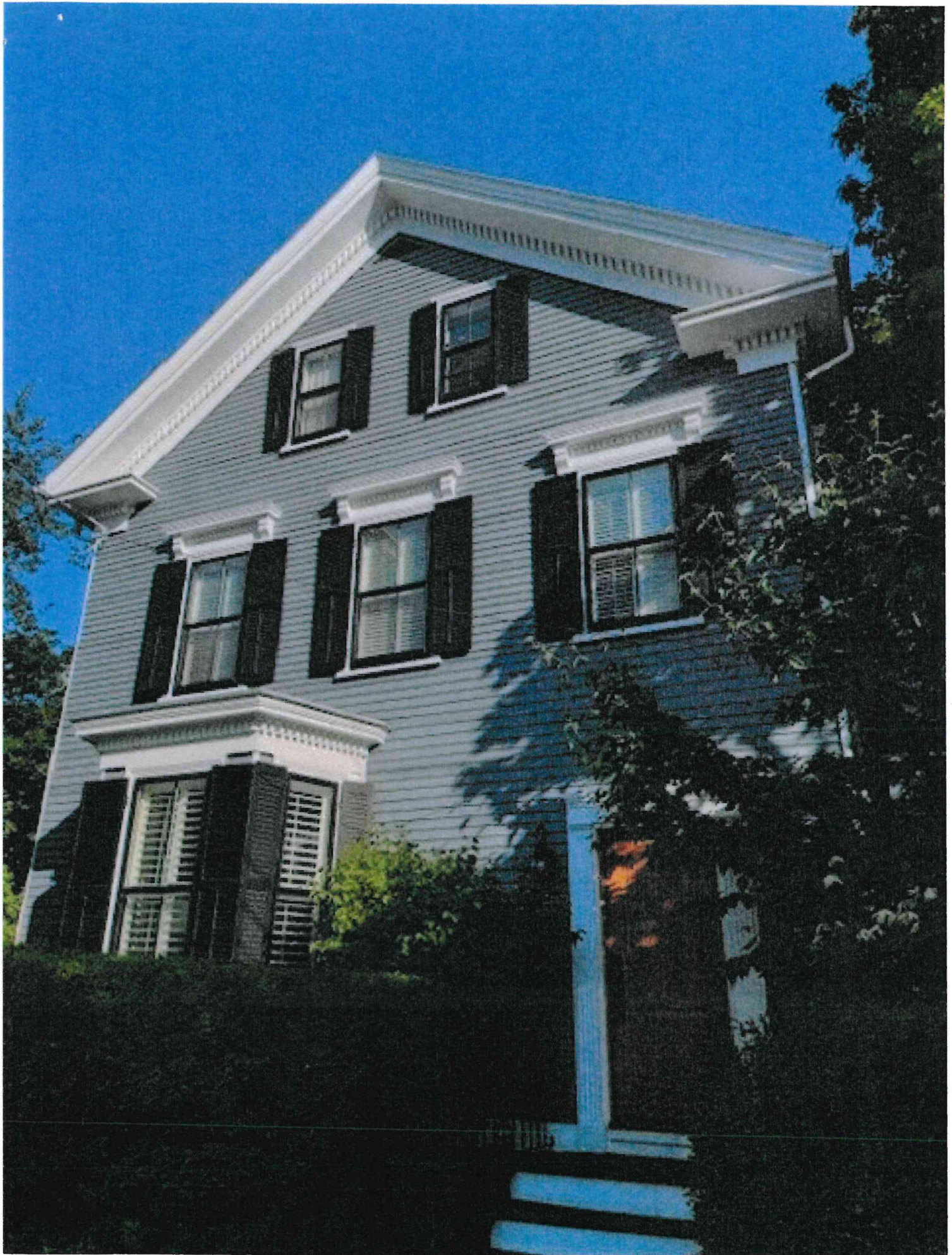
Andersen makes windows and doors with options that make them ENERGY STAR® v. 6.0 certified throughout the U.S.



Andersen is a charter member of the **U.S. Green Building Council** and a strong supporter of its LEED® (Leadership in Energy and Environmental Design) National Green Building Standard rating system.



*Visit andersenwindows.com/warranty for details.
All trademarks where denoted are marks of their respective owners.
©2022 Andersen Corporation. All rights reserved. 01/22 Part #9066670



514 Middle St - Front view

