



































ORDERING PROCESS WITH REFERENCE TO SHOP DRAWINGS:  
 Builders ordering the Marvin Windows and Door products featured within  
 this document are required to provide the manufacturer with the  
 approved signature of the purchaser and the return to the manufacturer  
 of the approved shop drawings. The manufacturer will not be responsible  
 for the approval shop drawings. Marvin Windows and Door reserves the  
 right to modify the shop drawings without notice. The manufacturer  
 is not responsible for any errors or omissions in the drawings.  
 Appropriately to guide every product, consultation with the drawings.

REVISION:

CREATED: 05/07/2024

PK VERSION: 0004.00.01

PROVIDE: MAINE COAST BLISS BLISSMACRO ONLY MAINE COAST BLISS BLISSMACRO ONLY

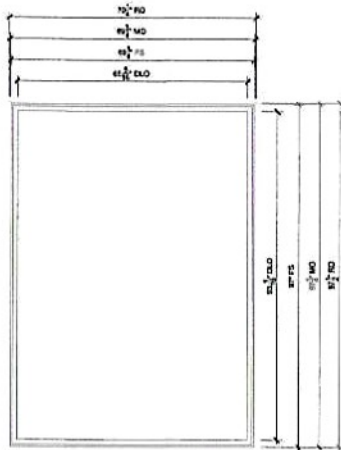
DISTRIBUTOR: ELDREDGE LUMBER & HARDWARE-YORK-00

DRAWN: HECTHER DITZEL

QUOTED: RTD00007W

SHEET  
1

OF 7

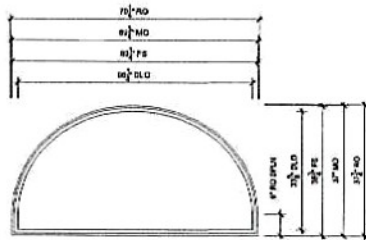


**BOW ST BLISS LOWER**  
SCALE: 3/4" = 1'-0"

① Head ② Jamb ③ SS

**SPECIFICATIONS**

- Line # 1
- Qty: 1
- Max Use: BOW ST BLISS Lower
- Product Line: Ultrama
- Jamb Description: Direct Glass Rectangle
- Range Opening: 70 1/2" X 87 1/2"
- Frame Size: 80 1/2" X 97"
- Masonry Opening: 62 3/4" X 87 1/2"
- Deck Opening: 70 1/2" X 87 1/2"
- Inside Opening: 70 1/2" X 87 1/2"
- Exterior Finish: Stone White
- Spigots: None
- Interior Finish: Primed
- Unit Type: Direct Glass Round Top
- Call Number: None
- Glass Information: Low E2 w/Argon, Black
- Order Type: None
- Hardware Type: None
- Screen Type: None
- Screen Color: None
- Screen Surround Color: None
- Screen Mesh Type: None
- Jamb Depth: 4 9/16"

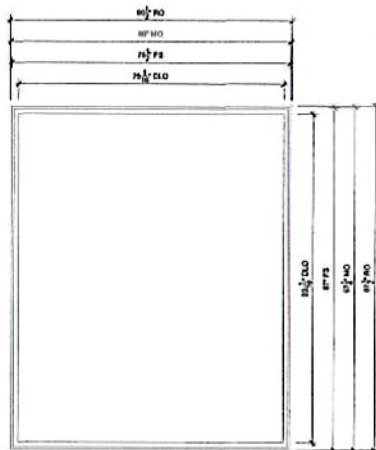


**BOW ST BLISS UPPER**  
SCALE: 3/4" = 1'-0"

① Head ② Jamb ③ SS

**SPECIFICATIONS**

- Line # 2
- Qty: 1
- Max Use: BOW ST BLISS UPPER
- Product Line: Ultrama
- Unit Description: Direct Glass Round Top
- Range Opening: 70 1/2" X 27 1/4"
- Frame Size: 80 1/2" X 36 5/8"
- Masonry Opening: 62 3/4" X 27 1/4"
- Deck Opening: 70 1/2" X 27 1/4"
- Inside Opening: 70 1/2" X 27 1/4"
- Exterior Finish: Stone White
- Spigots: None
- Interior Finish: Primed
- Unit Type: Direct Glass Round Top
- Call Number: None
- Glass Information: Low E2 w/Argon, Black
- Order Type: None
- Hardware Type: None
- Screen Type: None
- Screen Color: None
- Screen Surround Color: None
- Screen Mesh Type: None
- Jamb Depth: 4 9/16"

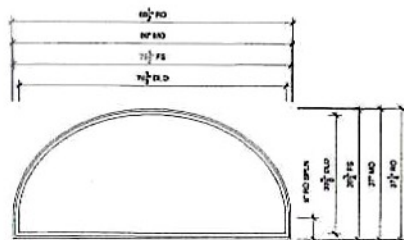


**MARKET ST BLISS FAR RT LWR**  
SCALE: 3/4" = 1'-0"

① Head ② Jamb ③ SS

**SPECIFICATIONS**

- Line # 3
- Qty: 1
- Max Use: MARKET ST BLISS FAR RT LWR
- Product Line: Ultrama
- Unit Description: Direct Glass Rectangle
- Range Opening: 87 1/2" X 87 1/2"
- Frame Size: 98 1/2" X 97"
- Masonry Opening: 80 1/2" X 87 1/2"
- Deck Opening: 88 1/2" X 87 1/2"
- Inside Opening: 88 1/2" X 87 1/2"
- Exterior Finish: Stone White
- Spigots: None
- Interior Finish: Primed
- Unit Type: Direct Glass Rectangle
- Call Number: None
- Glass Information: Low E2 w/Argon, Black
- Order Type: None
- Hardware Type: None
- Screen Type: None
- Screen Color: None
- Screen Surround Color: None
- Screen Mesh Type: None
- Jamb Depth: 4 9/16"



**MARKET ST BLISS FAR RT UP**  
SCALE: 3/4" = 1'-0"

① Head ② Jamb ③ SS

**SPECIFICATIONS**

- Line # 4
- Qty: 1
- Max Use: MARKET ST BLISS FAR RT UP
- Product Line: Ultrama
- Unit Description: Direct Glass Round Top
- Range Opening: 87 1/2" X 27 1/4"
- Frame Size: 98 1/2" X 36 5/8"
- Masonry Opening: 80 1/2" X 27 1/4"
- Deck Opening: 88 1/2" X 27 1/4"
- Inside Opening: 88 1/2" X 27 1/4"
- Exterior Finish: Stone White
- Spigots: None
- Interior Finish: Primed
- Unit Type: Direct Glass Round Top
- Call Number: None
- Glass Information: Low E2 w/Argon, Black
- Order Type: None
- Hardware Type: None
- Screen Type: None
- Screen Color: None
- Screen Surround Color: None
- Screen Mesh Type: None
- Jamb Depth: 4 9/16"

ORDERING PRODUCTS WITH REFERENCE TO SHOP DRAWINGS: Before making the Marvin Window and Door product purchase, please contact your local Marvin representative for the approved signature of the purchaser and be returned to the Architectural Department, Marvin Windows and Doors, P.O. Box 100, Olmsted, Massachusetts 01970. If no Marvin representative is available, please contact your local Marvin representative for the approved shop drawings. Marvin Windows and Doors reserves the right to change product specifications without notice. Responsibility for guaranteeing product conformance with the drawings is the responsibility of the purchaser.

REVISION:

CREATED: 05/07/2024

PK VERSION: 0034.08.01

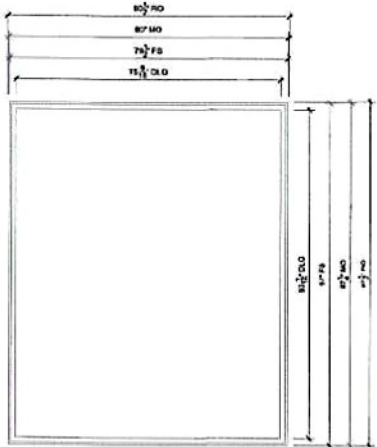
PROJECT: MAINE COAST BELLS BLISSMACRO ONLY / MAINE COAST BLISSMACRO ONLY

DISTRIBUTOR: ELDRIDGE LUMBER & HARDWARE, YORK, CO

DRAWN: HEATHER CITTEL

QUOTED: RTXANPW

SHEET  
2  
OF 7

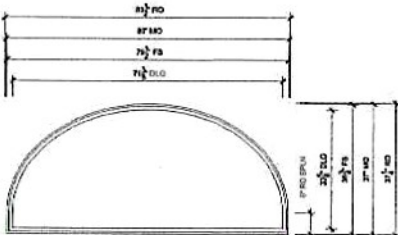


**MARKET ST BLISS LFT OF DR LW**  
SCALE: 3/4\"/>

⊕ Head ⊕ Jamb ⊕ SB

**SPECIFICATIONS**

- Line # 3
- Qty 1
- Material: MARVET ST BLISS LFT OF DR LW
- Product Line: UltraLite
- Unit Description: Direct Glass Rectangle
- Rough Opening: 80 1/2\"/>
- Frame Size: 78 1/2\"/>
- Manway Opening: 62\"/>
- Back Opening: 68 1/2\"/>
- Isola Opening: 68 1/2\"/>
- Exterior Finish: Stone White
- Screen: None
- Interior Finish: Painted
- Unit Type: Direct Glass Rectangle
- Call Number: None
- Glass Information: Low E2 w/Argon, Black
- Divider Type: None
- Hardware Type: None
- Screen Type: None
- Hardware Color: None
- Screen Color: None
- Screen Surround Color: None
- Screen Mesh Type: None
- Jamb Depth: 4 5/8\"/>

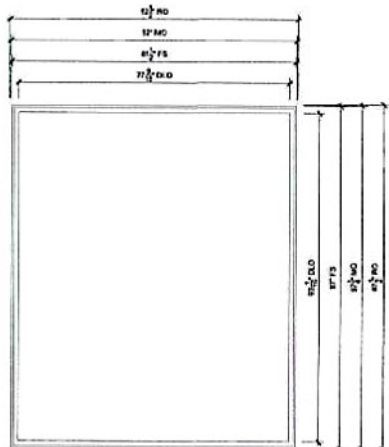


**MARKET ST BLISS LFT DR UP**  
SCALE: 3/4\"/>

⊕ Head ⊕ Jamb ⊕ SB

**SPECIFICATIONS**

- Line # 8
- Qty 1
- Material: MARVET ST BLISS LFT DR UP
- Product Line: UltraLite
- Unit Description: Direct Glass Round Top
- Rough Opening: 80 1/2\"/>
- Frame Size: 78 1/2\"/>
- Manway Opening: 62\"/>
- Back Opening: 68 1/2\"/>
- Isola Opening: 68 1/2\"/>
- Exterior Finish: Stone White
- Screen: None
- Interior Finish: Painted
- Unit Type: Direct Glass Round Top
- Call Number: None
- Glass Information: Low E2 w/Argon, Black
- Divider Type: None
- Hardware Type: None
- Screen Type: None
- Hardware Color: None
- Screen Surround Color: None
- Screen Mesh Type: None
- Jamb Depth: 4 5/8\"/>

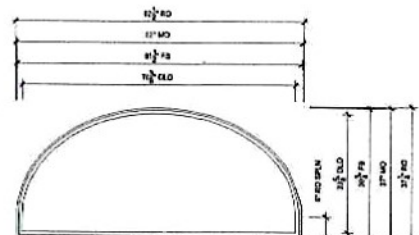


**MARKET ST MACRO FAR RT LWR**  
SCALE: 3/4\"/>

⊕ Head ⊕ Jamb ⊕ SB

**SPECIFICATIONS**

- Line # 1
- Qty 1
- Material: MARVET ST MACRO FAR RT LWR
- Product Line: UltraLite
- Unit Description: Direct Glass Rectangle
- Rough Opening: 82 1/2\"/>
- Frame Size: 81 1/2\"/>
- Manway Opening: 62\"/>
- Back Opening: 68 1/2\"/>
- Isola Opening: 68 1/2\"/>
- Exterior Finish: Stone White
- Screen: None
- Interior Finish: Painted
- Unit Type: Direct Glass Rectangle
- Call Number: None
- Glass Information: Low E2 w/Argon, Black
- Divider Type: None
- Hardware Type: None
- Screen Type: None
- Hardware Color: None
- Screen Surround Color: None
- Screen Mesh Type: None
- Jamb Depth: 4 5/8\"/>



**MARKET ST MACRO FAR RT UP**  
SCALE: 3/4\"/>

⊕ Head ⊕ Jamb ⊕ SB

**SPECIFICATIONS**

- Line # 8
- Qty 1
- Material: MARVET ST MACRO FAR RT UP
- Product Line: UltraLite
- Unit Description: Direct Glass Round Top
- Rough Opening: 82 1/2\"/>
- Frame Size: 81 1/2\"/>
- Manway Opening: 62\"/>
- Back Opening: 68 1/2\"/>
- Isola Opening: 68 1/2\"/>
- Exterior Finish: Stone White
- Screen: None
- Interior Finish: Painted
- Unit Type: Direct Glass Round Top
- Call Number: None
- Glass Information: Low E2 w/Argon, Black
- Divider Type: None
- Hardware Type: None
- Screen Type: None
- Hardware Color: None
- Screen Surround Color: None
- Screen Mesh Type: None
- Jamb Depth: 4 5/8\"/>

ORDERING PRODUCTS WITH REFERENCE TO SPEC DRAWINGS:  
 Before ordering the Marvin Windows and Door products, customer with approved signature of the Purchaser must be returned to the Architectural Department of Marvin Windows and Door, 470 Elm Street, Marlow, MA 01906. If the Marvin products shown are not available, the Architectural Department will provide an alternative product. The alternative product will be the approved specification. Marvin Windows and Door assumes no responsibility for guaranteeing product compatibility with the drawings.

REVISION

CREATED: 05/07/2024

PK VERSION: 0004.00.01

PROJECT: MAINE COAST BLINDS BLISSMACRO ONLY / MAINE COAST BLINDS BLISSMACRO ONLY

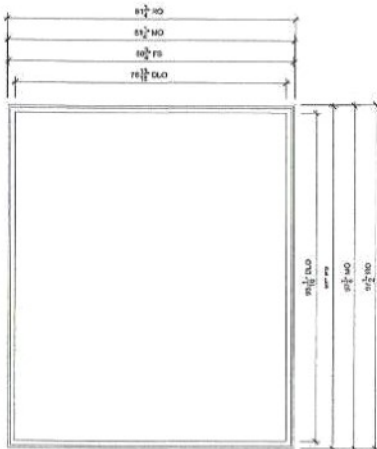
DIST/DEALER: ELURIDGE LUMBER & HARDWARE-YORK-GO

DRAWN: HEATHER DITZEL

QUOTE#: RT00049V

SHEET  
3

OF 7

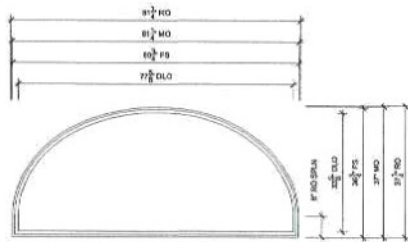


**MARKET ST MACRO LFT OF DR L**  
SCALE 3/4" = 1'-0"

⊕ Head ⊕ Jamb ⊕ Sill

**SPECIFICATIONS**

Line #: 9  
 Qty: 1  
 Mark Use: MARKET ST MACRO LFT OF DR L  
 Product Line: U950wa  
 Unit Description: Direct Glass Rectangle  
 Rough Opening: 81 1/4" X 87 1/2"  
 Frame Size: 80 3/4" X 87"  
 Masonry Opening: 81 1/4" X 87 1/4"  
 Sash Opening: 81 3/4" X 87 1/2"  
 Inset Opening: 81 3/4" X 87 1/2"  
 Exterior Finish: Stone White  
 Species: Pine  
 Interior Finish: Primed  
 Unit Type: Direct Glass Rectangle  
 Call Number: None  
 Glass Information: 03, Tempered Low E2 w/argon, Black  
 Color Type: None  
 Hardware Type: None  
 Screen Type: None  
 Hardware Color: None  
 Screen Diamond Color: None  
 Screen Mesh Type: None  
 Jamb Depth: 4 5/16"

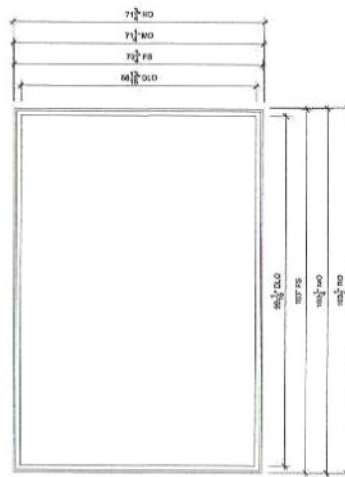


**MARKET ST MACRO LFT DR UP**  
SCALE 3/4" = 1'-0"

⊕ Head ⊕ Jamb ⊕ Sill

**SPECIFICATIONS**

Line #: 10  
 Qty: 1  
 Mark Use: MARKET ST MACRO LFT DR UP  
 Product Line: U950wa  
 Unit Description: Direct Glass Round Top  
 Rough Opening: 81 3/4" X 37 5/8"  
 Frame Size: 80 3/4" X 38 1/4"  
 Masonry Opening: 81 1/4" X 37"  
 Sash Opening: 81 3/4" X 37 1/4"  
 Inset Opening: 81 3/4" X 37 1/4"  
 Exterior Finish: Stone White  
 Species: Pine  
 Interior Finish: Primed  
 Unit Type: Direct Glass Round Top  
 Call Number: None  
 Glass Information: Low E2 w/argon, Black  
 Color Type: None  
 Hardware Type: None  
 Screen Type: None  
 Hardware Color: None  
 Screen Diamond Color: None  
 Screen Mesh Type: None  
 Jamb Depth: 4 5/16"

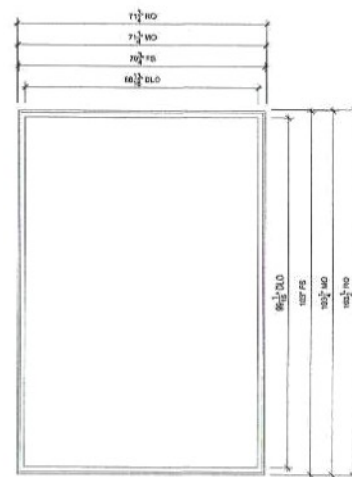


**MACRO ENTRANCE RIGHT**  
SCALE 3/4" = 1'-0"

⊕ Head ⊕ Jamb ⊕ Sill

**SPECIFICATIONS**

Line #: 11  
 Qty: 1  
 Mark Use: MACRO ENTRANCE RIGHT  
 Product Line: U950wa  
 Unit Description: Direct Glass Rectangle  
 Rough Opening: 71 5/8" X 103 1/2"  
 Frame Size: 70 3/4" X 103"  
 Masonry Opening: 71 1/4" X 103 1/4"  
 Sash Opening: 71 3/4" X 103 1/2"  
 Inset Opening: 71 3/4" X 103 1/2"  
 Exterior Finish: Stone White  
 Species: Pine  
 Interior Finish: Primed  
 Unit Type: Direct Glass Rectangle  
 Call Number: None  
 Glass Information: 03, Tempered Low E2 w/argon, Black  
 Color Type: None  
 Hardware Type: None  
 Screen Type: None  
 Hardware Color: None  
 Screen Diamond Color: None  
 Screen Mesh Type: None  
 Jamb Depth: 4 5/16"



**MACRO ENTRANCE LEFT**  
SCALE 3/4" = 1'-0"

⊕ Head ⊕ Jamb ⊕ Sill

**SPECIFICATIONS**

Line #: 12  
 Qty: 1  
 Mark Use: MACRO ENTRANCE LEFT  
 Product Line: U950wa  
 Unit Description: Direct Glass Rectangle  
 Rough Opening: 71 3/4" X 103 1/2"  
 Frame Size: 70 3/4" X 103"  
 Masonry Opening: 71 1/4" X 103 1/4"  
 Sash Opening: 71 3/4" X 103 1/2"  
 Inset Opening: 71 3/4" X 103 1/2"  
 Exterior Finish: Stone White  
 Species: Pine  
 Interior Finish: Primed  
 Unit Type: Direct Glass Rectangle  
 Call Number: None  
 Glass Information: 03, Tempered Low E2 w/argon, Black  
 Color Type: None  
 Hardware Type: None  
 Screen Type: None  
 Hardware Color: None  
 Screen Diamond Color: None  
 Screen Mesh Type: None  
 Jamb Depth: 4 5/16"



ORDERING PRODUCTS WITH REFERENCE TO SHOP DRAWINGS: Before ordering the Marvin Window and Door products (shown) which are subject to change without notice, please refer to the approved drawings of the product for the most current information. The approved drawings are the authoritative source for the approved window drawings. Marvin Windows and Doors hereby disclaims any responsibility in guaranteeing product coordination with the drawings.

REVISION:  
CREATED: 05/27/2024

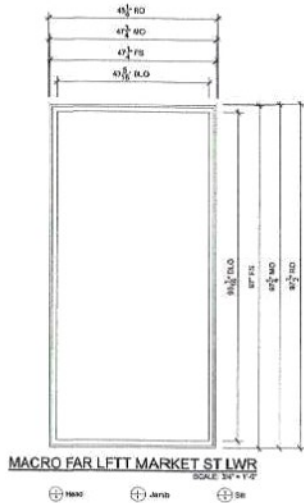
PROJECT: MAINE COAST BLISSMACRO ONLY / MAINE COAST BLISSMACRO ONLY

DIST/DEALER: ELDRIDGE LUMBER & HARDWARE-YORK-GO

DRAWN: HEATHER DITZEL

QUOTE#: RT0000W

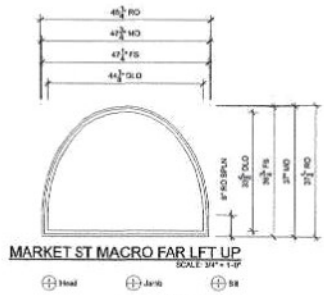
SHEET  
4  
OF 7



**MACRO FAR LEFT MARKET ST LWR**  
SCALE: 3/4\"/>

**SPECIFICATIONS**

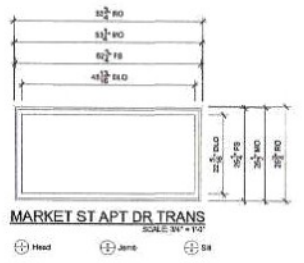
Line # 13  
Qty: 1  
Mark Unit: MACRO FAR LEFT MARKET ST LWR  
Product Line: URBAN  
Unit Description: Direct Glass Round Top  
Rough Opening: 48 1/4\"/>



**MARKET ST MACRO FAR LEFT UP**  
SCALE: 3/4\"/>

**SPECIFICATIONS**

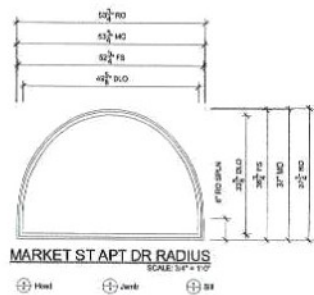
Line # 14  
Qty: 1  
Mark Unit: MARKET ST MACRO FAR LEFT UP  
Product Line: URBAN  
Unit Description: Direct Glass Round Top  
Rough Opening: 48 1/4\"/>



**MARKET ST APT DR TRANS**  
SCALE: 3/4\"/>

**SPECIFICATIONS**

Line # 15  
Qty: 1  
Mark Unit: MARKET ST APT DR TRANS  
Product Line: URBAN  
Unit Description: Direct Glass Rectangle  
Rough Opening: 63 3/4\"/>



**MARKET ST APT DR RADIUS**  
SCALE: 3/4\"/>

**SPECIFICATIONS**

Line # 16  
Qty: 1  
Mark Unit: MARKET ST APT DR RADIUS  
Product Line: URBAN  
Unit Description: Direct Glass Round Top  
Rough Opening: 63 3/4\"/>



**MARKET ST MACRO DR RADIUS**  
SCALE: 3/4\"/>

**SPECIFICATIONS**

Line # 17  
Qty: 1  
Mark Unit: MARKET ST MACRO DR RADIUS  
Product Line: URBAN  
Unit Description: Direct Glass Round Top  
Rough Opening: 63 3/4\"/>

ORDERING PRODUCTS WITH REFERENCE TO THIS DRAWING: Always ordering the Marvin Window and Door products illustrated with this drawing. The product name and description must be included. The approved signature of the purchaser must be returned to the Architectural Department. This drawing is not to be used for any other purpose without the written consent of Marvin. It is the responsibility of the purchaser to ensure that the approved shop drawings, Marvin Window and Door drawings and specifications are in accordance with the drawings.

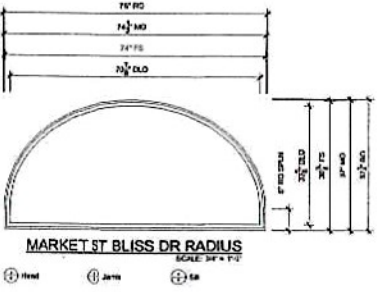
REVISION:

CREATED: 06/07/2024  
PK VERSION: 0004.08.01

PROJ: MAINE COAST BLISS MACRO ONLY / MAINE COAST BLISS MACRO ONLY

DISTO: ELDREDGE LUMBER & HARDWARE-YORK-CO

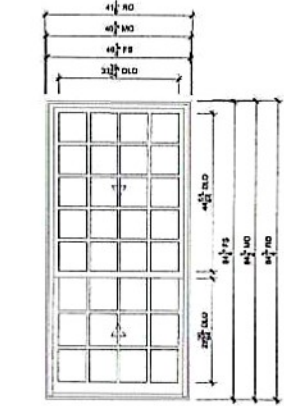
DRAWN: HEATHER CRITZEL  
QUOTES: RTD0009V



**MARKET ST BLISS DR RADIUS**  
SCALE: 3/4" = 1'-0"

**SPECIFICATIONS**

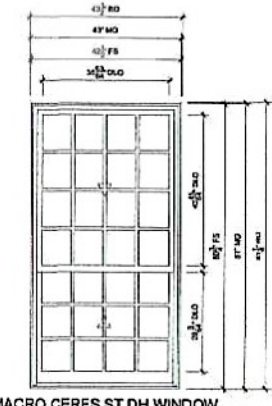
Line # 11  
Qty: 1  
Mark Use: MARKET ST BLISS DR RADIUS  
Product Line: Unbranded  
Unit Description: Drilled Glass Round Top  
Rough Opening: 7'0" X 3'0"  
Frame Size: 7'0" X 3'0"  
Masonry Opening: 7'0" X 3'0"  
Sash Opening: 7'0" X 3'0"  
Inset Opening: 7'0" X 3'0"  
Exterior Finish: Stone White  
Interior Finish: Painted  
Unit Type: Drilled Glass Round Top  
Call Number: None  
Glass Information: Low E2 w/Argon, Black  
Divider Type: None  
Hardware Type: None  
Screen Type: None  
Hardware Color: None  
Screen Surround Color: None  
Screen Mesh Type: None  
Jamb Depth: 4 5/8"



**BLISS CERES ST DH WINDOW**  
SCALE: 3/4" = 1'-0"

**SPECIFICATIONS**

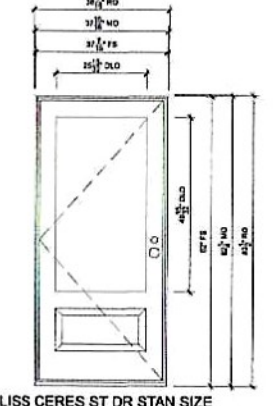
Line # 10  
Qty: 1  
Mark Use: BLISS CERES ST DH WINDOW  
Product Line: Unbranded  
Unit Description: Double Hung G2  
Rough Opening: 4'1" X 3'4" X 3/4"  
Frame Size: 4'0" X 3'4" X 3/4"  
Masonry Opening: 4'0" X 3'4" X 3/4"  
Sash Opening: 4'1" X 3'4" X 3/4"  
Inset Opening: 4'1" X 3'4" X 3/4"  
Exterior Finish: Stone White  
Interior Finish: Painted Interior Finish - White  
Unit Type: Double Hung G2  
Call Number: None  
Glass Information: IG, Low E2 w/Argon, Black, Tempered Low E2 w/Argon  
Divider Type: 7/8" Rectangular GCL w/ Spacer - Black  
Hardware Type: Sash Lock, LR Type: None, No Finger Pad, Top Sash Lifter - None, Bottom Sash Lifter - None, Window Opening Control - None  
Screen Type: Extended Aluminum Screen  
Hardware Color: Bronze  
Screen Surround Color: Stone White  
Screen Mesh Type: Bugle View Mesh  
Jamb Depth: 4 5/8"



**MACRO CERES ST DH WINDOW**  
SCALE: 3/4" = 1'-0"

**SPECIFICATIONS**

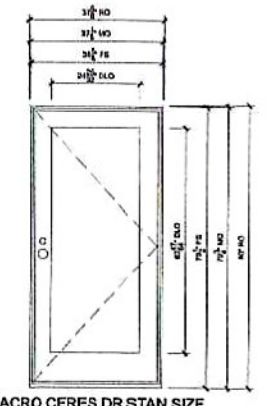
Line # 9  
Qty: 1  
Mark Use: MACRO CERES ST DH WINDOW  
Product Line: Unbranded  
Unit Description: Double Hung G2  
Rough Opening: 4'1" X 3'4" X 3/4"  
Frame Size: 4'0" X 3'4" X 3/4"  
Masonry Opening: 4'0" X 3'4" X 3/4"  
Sash Opening: 4'1" X 3'4" X 3/4"  
Inset Opening: 4'1" X 3'4" X 3/4"  
Exterior Finish: Stone White  
Interior Finish: Painted Interior Finish - White  
Unit Type: Double Hung G2  
Call Number: None  
Glass Information: IG, Low E2 w/Argon, Black, Tempered Low E2 w/Argon  
Divider Type: 7/8" Rectangular GCL w/ Spacer - Black  
Hardware Type: Sash Lock, LR Type: None, No Finger Pad, Top Sash Lifter - None, Bottom Sash Lifter - None, Window Opening Control - None  
Screen Type: Extended Aluminum Screen  
Hardware Color: Bronze  
Screen Surround Color: Stone White  
Screen Mesh Type: Bugle View Mesh  
Jamb Depth: 4 5/8"



**BLISS CERES ST DR STAN SIZE**  
SCALE: 3/4" = 1'-0"

**SPECIFICATIONS**

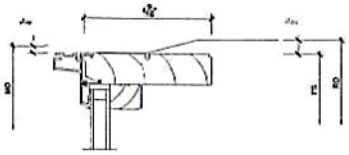
Line # 8  
Qty: 1  
Mark Use: BLISS CERES ST DR STAN SIZE  
Product Line: Unbranded  
Unit Description: Outswing French Door G2  
Rough Opening: 3'8" X 6'0" X 1/2"  
Frame Size: 3'7" X 5'8" X 1/2"  
Masonry Opening: 3'7" X 5'8" X 1/2"  
Sash Opening: 3'8" X 6'0" X 1/2"  
Inset Opening: 3'8" X 6'0" X 1/2"  
Exterior Finish: Stone White  
Interior Finish: Painted Interior Finish - White  
Unit Type: Outswing French Door G2, L, Right-Hand  
Call Number: CH204  
Glass Information: Tempered Low E2 w/Argon, Black  
Divider Type: None  
Hardware Type: Multi-Point Lock, Adjustable Hinges  
Screen Type: None  
Hardware Color: Oil Rubbed Bronze PVD  
Screen Surround Color: Stone  
Screen Mesh Type: None  
Jamb Depth: 4 5/8"



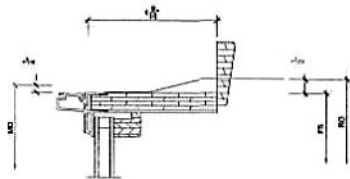
**MACRO CERES DR STAN SIZE**  
SCALE: 3/4" = 1'-0"

**SPECIFICATIONS**

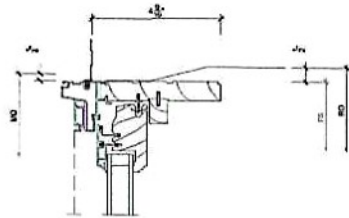
Line # 7  
Qty: 1  
Mark Use: MACRO CERES DR STAN SIZE  
Product Line: Unbranded  
Unit Description: Outswing French Door G2  
Rough Opening: 3'8" X 6'0" X 1/2"  
Frame Size: 3'8" X 5'8" X 1/2"  
Masonry Opening: 3'8" X 5'8" X 1/2"  
Sash Opening: 3'8" X 6'0" X 1/2"  
Inset Opening: 3'8" X 6'0" X 1/2"  
Exterior Finish: Stone White  
Interior Finish: Painted Interior Finish - White  
Unit Type: Outswing French Door G2, R, Left-Hand  
Call Number: CH204  
Glass Information: Tempered Low E2 w/Argon, Black  
Divider Type: None  
Hardware Type: Multi-Point Lock, Adjustable Hinges  
Screen Type: None  
Hardware Color: Oil Rubbed Bronze PVD  
Screen Surround Color: Stone  
Screen Mesh Type: None  
Jamb Depth: 4 5/8"



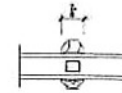
1 Head SCALE: 8" = 1'-0"



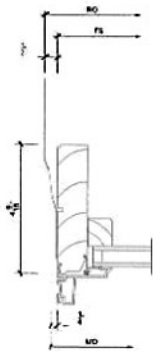
2 Head SCALE: 8" = 1'-0"



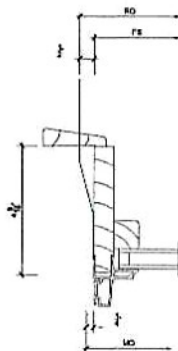
3 Head SCALE: 8" = 1'-0"



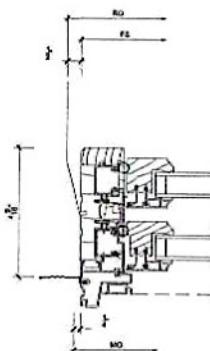
10 Divided Life SCALE: 8" = 1'-0"



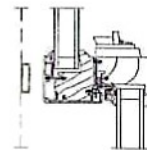
4 Jamb SCALE: 8" = 1'-0"



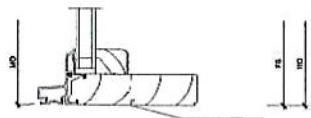
5 Jamb SCALE: 8" = 1'-0"



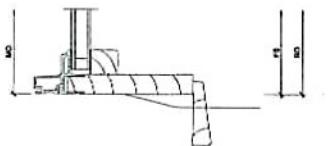
6 Jamb SCALE: 8" = 1'-0"



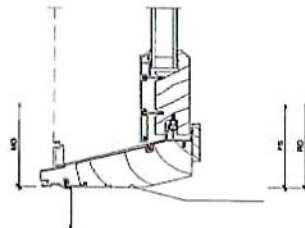
11 Checkrail SCALE: 8" = 1'-0"



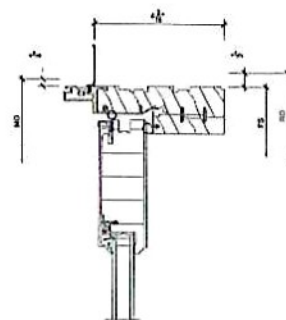
7 Sill SCALE: 8" = 1'-0"



8 Sill SCALE: 8" = 1'-0"



9 Sill SCALE: 8" = 1'-0"



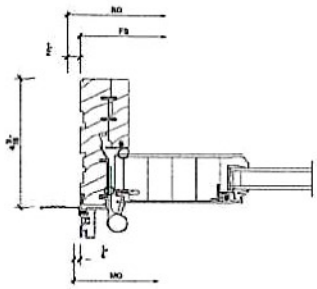
12 Head SCALE: 8" = 1'-0"



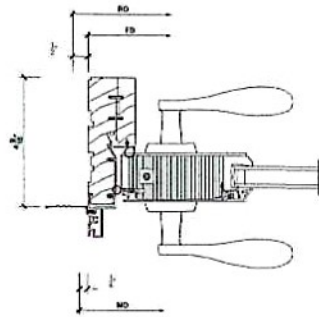
DESIGNED AND MANUFACTURED BY MARVIN WINDOW AND DOOR PRODUCTS. ALL DIMENSIONS ARE IN INCHES UNLESS OTHERWISE SPECIFIED. MARVIN WINDOW AND DOOR PRODUCTS IS NOT RESPONSIBLE FOR ANY DAMAGE TO PROPERTY OR PERSONS ARISING FROM THE USE OF THIS PRODUCT. MARVIN WINDOW AND DOOR PRODUCTS IS NOT RESPONSIBLE FOR ANY DAMAGE TO PROPERTY OR PERSONS ARISING FROM THE USE OF THIS PRODUCT.

PRODUCE: MAINE COAST BLINDS BLISSMACRO ONLY / MAINE COAST BLINDS BLISSMACRO ONLY  
 DISTRO/PALER: ELDRIDGE LUMBER & HARDWARE / DRFG-00  
 DRAWN: HEATHER DITZEL  
 QUOTES: RTW/VFW  
 PKL VERSION: 0304.08.01  
 REVISION:  
 CREATED: 05/07/2024





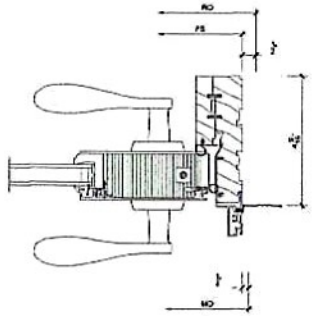
1 Jamb SCALE: 6" = 1'-0"



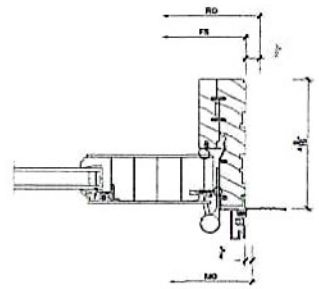
2 Jamb SCALE: 6" = 1'-0"

3 NOT USED SCALE: 6" = 1'-0"

4 NOT USED SCALE: 6" = 1'-0"



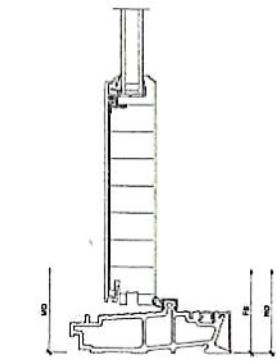
5 Jamb SCALE: 6" = 1'-0"



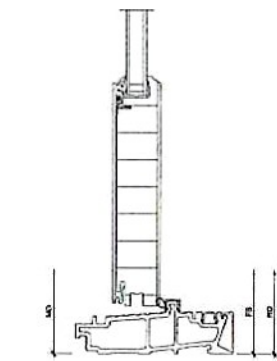
6 Jamb SCALE: 6" = 1'-0"

7 NOT USED SCALE: 6" = 1'-0"

8 NOT USED SCALE: 6" = 1'-0"



9 Sill SCALE: 6" = 1'-0"



10 Sill SCALE: 6" = 1'-0"

11 NOT USED SCALE: 6" = 1'-0"

12 NOT USED SCALE: 6" = 1'-0"



FOR LATEST PRODUCT INFORMATION, VISIT OUR WEBSITE: [www.marvin.com](http://www.marvin.com)  
 Before using the Marvin Window and Door products illustrated with this drawing, please read the instructions and safety information included in the product literature. The use of these products is limited to the applications and conditions specified in the literature. Marvin Windows & Doors, Inc. is not responsible for any damage or injury resulting from the use of these products in any application not specified in the literature. Marvin Windows & Doors reserves the right to change product specifications without notice.

PROJECT: MAINE COAST BLISS/MACRO ONLY / MAINE COAST BLISS/MACRO ONLY  
 DIST./PAALER: ELDREDE LUMBER & HARDWARE-YORK-CO  
 DRAWN: KATHER DITZEL  
 QUOTE# RTXNDW  
 PK VERSION: 0904-08-01  
 CREATED: 05/07/2024  
 REV: 004



**ORDERING PRODUCTS WITH REFERENCE TO SHOP DRAWINGS:**  
 Submitting the Marvin Window and Door products Manual with approved signature of the Purchaser must be returned to the Architectural Department, Marvin Windows and Doors, P.O. Box 100, Thermal, California 92388. It is the buyer's responsibility to ensure that the drawings are correct. It is the buyer's responsibility to coordinate with the drawings. It is the buyer's responsibility to coordinate with the drawings.

REVISIONS

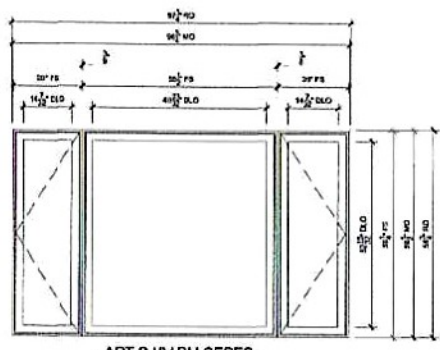
CREATED: 05/07/2024  
 PKL VERSION: 0004.08.01

PROJECT: MAINE COAST BLINDS DOPLIN/APTS / MAINE COAST BLINDS DOPLIN/APTS

DISTRIBUTOR: ELDREDGE LUMBER & HARDWARE-YORK-GO

DRAWN: KEAHEA CRITZEL

QUOTED: 03/27/2025

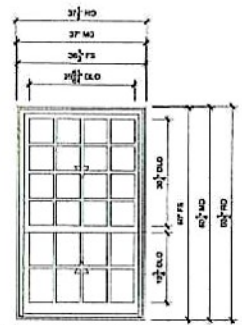


**APT 2 LIV RM CERES**  
 SCALE: 3/4" = 1'-0"

- ① Head
- ② Sill
- ③ Jamb
- ④ Vertical M. Fin
- ⑤ 61

**SPECIFICATIONS**

Line # 1  
 Qty: 1  
 Mark Up: APT 2 LIV RM CERES  
 Product Line: Window  
 Unit Description: Mark Assembly  
 Rough Opening: 37 1/2" X 66 3/4"  
 Frame Size: 36 1/2" X 66 1/2"  
 Masonry Opening: 36 1/2" X 66 3/4"  
 Sash Opening: 37 1/2" X 66 3/4"  
 Inside Opening: 37 1/2" X 66 3/4"  
 Exterior Finish: Stone White  
 Species: Pine  
 Interior Finish: Painted Interior Finish - White  
 Unit Type: (A) Casement, Left Hand, (A2) Casement, Right Hand  
 Call Number: #1023 CND 44A, (A2) None  
 Glass Information: 12 - 24", Low E3 w/Argon, Black  
 Divider Type: None  
 Hardware Type: (A) 2x4 Tolerp Handle, In Sash Travel Lintel, (A2) None  
 Screen Type: (A) 2x4 Extruded Aluminum Screen, (A2) None  
 Hardware Color: (A) 1903 Bronze, (A2) None  
 Screen Surface Color: (A) 1903 White, (A2) None  
 Screen Mesh Type: (A) 14/20 Bright View Mesh, (A2) None  
 Jamb Depth: 4 1/8"

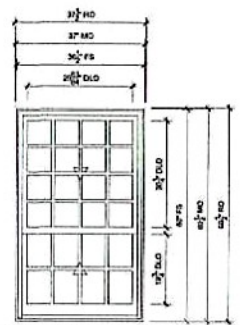


**APT 2 LIV RM BOW ST**  
 SCALE: 3/4" = 1'-0"

- ① Head
- ② Sill
- ③ Jamb
- ④ Divided Lite
- ⑤ Erection

**SPECIFICATIONS**

Line # 2  
 Qty: 1  
 Mark Up: APT 2 LIV RM BOW ST  
 Product Line: Window  
 Unit Description: Double Hung 02  
 Rough Opening: 37 1/2" X 66 1/2"  
 Frame Size: 36 1/2" X 66 1/2"  
 Masonry Opening: 37 1/2" X 66 1/2"  
 Sash Opening: 37 1/2" X 66 1/2"  
 Inside Opening: 37 1/2" X 66 1/2"  
 Exterior Finish: Stone White  
 Species: Pine  
 Interior Finish: Painted Interior Finish - White  
 Unit Type: Double Hung 02  
 Call Number: None  
 Glass Information: 12 - 24", Low E3 w/Argon, Black  
 Divider Type: 7/8" Rectangle SCL W/Spacer - Black  
 Hardware Type: (A) 1600, (A2) None, No Finger Pull, Top Sash Liner: None,  
 Bottom Sash Liner: None, Window Opening Control Device  
 Screen Type: Extruded Aluminum Screen  
 Hardware Color: Bronze  
 Screen Surface Color: Stone White  
 Screen Mesh Type: Bright View Mesh  
 Jamb Depth: 4 1/8"

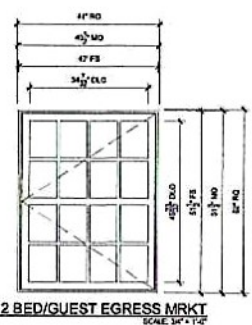


**APT 2 GUEST RM BOW ST**  
 SCALE: 3/4" = 1'-0"

- ① Head
- ② Sill
- ③ Jamb
- ④ Divided Lite
- ⑤ Erection

**SPECIFICATIONS**

Line # 7  
 Qty: 1  
 Mark Up: APT 2 GUEST RM BOW ST  
 Product Line: Window  
 Unit Description: Double Hung 02  
 Rough Opening: 37 1/2" X 66 1/2"  
 Frame Size: 36 1/2" X 66 1/2"  
 Masonry Opening: 37 1/2" X 66 1/2"  
 Sash Opening: 37 1/2" X 66 1/2"  
 Inside Opening: 37 1/2" X 66 1/2"  
 Exterior Finish: Stone White  
 Species: Pine  
 Interior Finish: Painted Interior Finish - White  
 Unit Type: Double Hung 02  
 Call Number: None  
 Glass Information: 12 - 24", Low E3 w/Argon, Black  
 Divider Type: 7/8" Rectangle SCL W/Spacer - Black  
 Hardware Type: (A) 1600, (A2) None, No Finger Pull, Top Sash Liner: None,  
 Bottom Sash Liner: None, Window Opening Control Device  
 Screen Type: Extruded Aluminum Screen  
 Hardware Color: Bronze  
 Screen Surface Color: Stone White  
 Screen Mesh Type: Bright View Mesh  
 Jamb Depth: 4 1/8"

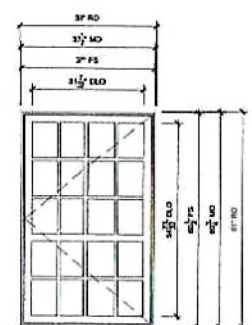


**APT 2 BED/GUEST EGRESS MKRT**  
 SCALE: 3/4" = 1'-0"

- ① Head
- ② Sill
- ③ Jamb
- ④ Divided Lite
- ⑤ Erection

**SPECIFICATIONS**

Line # 8  
 Qty: 2  
 Mark Up: APT 2 BED/GUEST EGRESS MKRT  
 Product Line: Window  
 Unit Description: Casement  
 Rough Opening: 47" X 62"  
 Frame Size: 47" X 62"  
 Masonry Opening: 48 1/2" X 64 1/2"  
 Sash Opening: 47" X 62"  
 Inside Opening: 47" X 62"  
 Exterior Finish: Stone White  
 Species: Pine  
 Interior Finish: Painted Interior Finish - White  
 Unit Type: Casement, Left Hand  
 Call Number: None  
 Glass Information: 12 - 24", Low E3 w/Argon, Black  
 Divider Type: 7/8" Vertical Rectangle SCL W/Spacer - Black  
 Hardware Type: Folding Handle, No Sash Travel Lintel  
 Screen Type: Aluminum Screen  
 Hardware Color: Bronze  
 Screen Surface Color: Stone White  
 Screen Mesh Type: Bright View Mesh  
 Jamb Depth: 4 1/8"



**APT 3 BED 1/2 MKRT ST EGRESS**  
 SCALE: 3/4" = 1'-0"

- ① Head
- ② Sill
- ③ Jamb
- ④ Divided Lite
- ⑤ Erection

**SPECIFICATIONS**

Line # 9  
 Qty: 2  
 Mark Up: APT 3 BED 1/2 MKRT ST EGRESS  
 Product Line: Window  
 Unit Description: Casement  
 Rough Opening: 38" X 61"  
 Frame Size: 37" X 60 1/2"  
 Masonry Opening: 37 1/2" X 60 3/4"  
 Sash Opening: 38" X 61"  
 Inside Opening: 38" X 61"  
 Exterior Finish: Stone White  
 Species: Pine  
 Interior Finish: Painted Interior Finish - White  
 Unit Type: Casement, Left Hand  
 Call Number: None  
 Glass Information: 12 - 24", Low E3 w/Argon, Black  
 Divider Type: 7/8" Vertical Rectangle SCL W/Spacer - Black  
 Hardware Type: Folding Handle, No Sash Travel Lintel  
 Screen Type: Extruded Aluminum Screen  
 Hardware Color: Bronze  
 Screen Surface Color: Stone White  
 Screen Mesh Type: Bright View Mesh  
 Jamb Depth: 4 1/8"



ORDERING PRODUCTS WITH REFERENCE TO SHOP DRAWINGS:  
 Before ordering the Marvin Window and Door products, compare with the approved drawings of the manufacturer. The manufacturer's name and address must be included in the order. The manufacturer's name and address must be included in the order. The manufacturer's name and address must be included in the order. The manufacturer's name and address must be included in the order.

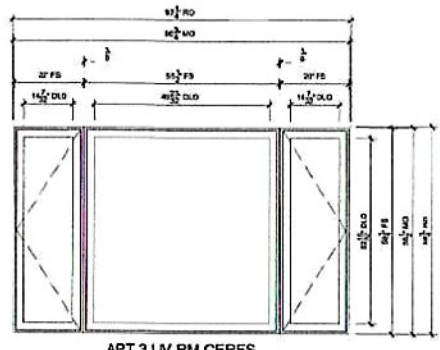
REV: 03/08

CREATED: 05/07/2024

PK VERSION: 0004-001

PROJECT: MAINE COAST BLURD DUPLICATIONS / MAINE COAST BLURD BLINDS DOOR-HW ARTS

DIST/DEALER: ELDREDE LUMBER & HARDWARE-YORK-GO  
 DRAWN: TANNER DITTEL  
 QUOTE#: 0287005

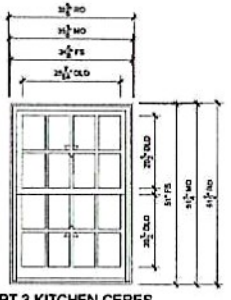


**APT 3 LIV RM CERES**  
 SCALE: 3/4" = 1'-0"

- ① Head
- ② Head
- ③ Jamb
- ④ Vertical Mullin
- ⑤ Sill

**SPECIFICATIONS**

Line # 10  
 Qty: 1  
 Mark Line: APT 3 LIV RM CERES  
 Product Line: Window  
 Unit Description: Window Assembly  
 Rough Opening: 37 1/4" X 58 3/4"  
 Frame Size: 36 1/4" X 58 1/4"  
 Maximum Opening: 36 3/4" X 58 1/4"  
 Sash Opening: 37 1/4" X 58 3/4"  
 Sill Opening: 37 1/4" X 58 3/4"  
 Jamb Opening: 37 1/4" X 58 3/4"  
 Exterior Finish: Stone White  
 Species: Pine  
 Interior Finish: Painted Interior Finish - White  
 Unit Type: Jamb, Casement, Left Hand  
 [A2] Casement, Right Hand  
 Call Number: None  
 Glass Information: IG - 1/2" Low E2 w/Argon, Back  
 Hardware Type: Satin Nickel, LH Type: None, RH Finger Pull, Top East Lintel: None  
 Sill/Dash Lintel: None  
 Corner Type: Aluminum Screen  
 Hardware Color: Bronze  
 Screen Color: Bronze  
 Screen Mesh Type: Bright View Mesh  
 Jamb Depth: 1 3/8"

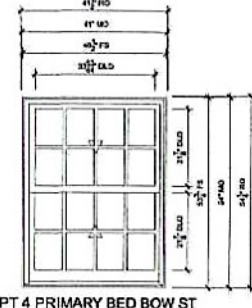


**APT 3 KITCHEN CERES**  
 SCALE: 3/4" = 1'-0"

- ① Head
- ② Sill
- ③ Checkrail
- ④ Jamb
- ⑤ Divided Lite

**SPECIFICATIONS**

Line # 11  
 Qty: 1  
 Mark Line: APT 3 KITCHEN CERES  
 Product Line: Window  
 Unit Description: Double Hung G2  
 Rough Opening: 38 5/8" X 58 3/4"  
 Frame Size: 34 1/8" X 58 1/4"  
 Maximum Opening: 35 1/4" X 58 1/4"  
 Sash Opening: 35 1/4" X 58 1/4"  
 Inset Opening: 35 5/8" X 58 1/4"  
 Exterior Finish: Stone White  
 Species: Pine  
 Interior Finish: Painted Interior Finish - White  
 Unit Type: Double Hung G2  
 Call Number: None  
 Glass Information: IG, Low E2 w/Argon, Back  
 Hardware Type: Satin Nickel, LH Type: None, RH Finger Pull, Top East Lintel: None  
 Sill/Dash Lintel: None  
 Corner Type: Aluminum Screen  
 Hardware Color: Bronze  
 Screen Color: Bronze  
 Screen Mesh Type: Bright View Mesh  
 Jamb Depth: 1 3/8"

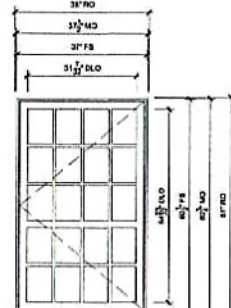


**APT 4 PRIMARY BED BOW ST**  
 SCALE: 3/4" = 1'-0"

- ① Head
- ② Sill
- ③ Checkrail
- ④ Jamb
- ⑤ Divided Lite

**SPECIFICATIONS**

Line # 12  
 Qty: 1  
 Mark Line: APT 4 PRIMARY BED BOW ST  
 Product Line: Window  
 Unit Description: Double Hung G2  
 Rough Opening: 41 1/2" X 54 1/4"  
 Frame Size: 40 1/2" X 53 3/4"  
 Maximum Opening: 41 1/8"  
 Sash Opening: 41 1/2" X 54 1/4"  
 Inset Opening: 41 1/2" X 54 1/4"  
 Exterior Finish: Stone White  
 Species: Pine  
 Interior Finish: Painted Interior Finish - White  
 Unit Type: Double Hung G2  
 Call Number: None  
 Glass Information: IG, Low E2 w/Argon, Back  
 Hardware Type: Satin Nickel, LH Type: None, RH Finger Pull, Top East Lintel: None  
 Sill/Dash Lintel: None  
 Corner Type: Aluminum Screen  
 Hardware Color: Bronze  
 Screen Color: Bronze  
 Screen Mesh Type: Bright View Mesh  
 Jamb Depth: 1 3/8"

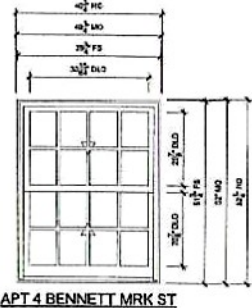


**APT4 PRIM/BENNETT MRKT EGR**  
 SCALE: 3/4" = 1'-0"

- ① Head
- ② Sill
- ③ Simulated Rail
- ④ Jamb
- ⑤ Divided Lite

**SPECIFICATIONS**

Line # 13  
 Qty: 1  
 Mark Line: APT4 PRIM/BENNETT MRKT EGR  
 Product Line: Window  
 Unit Description: Casement  
 Rough Opening: 37 1/4" X 61"  
 Frame Size: 37 1/8" X 60 1/2"  
 Maximum Opening: 37 1/4" X 60 3/4"  
 Sash Opening: 37 1/4" X 61"  
 Inset Opening: 37 1/4" X 61"  
 Exterior Finish: Stone White  
 Species: Pine  
 Interior Finish: Painted Interior Finish - White  
 Unit Type: Casement, Left Hand  
 Call Number: None  
 Glass Information: IG, Low E2 w/Argon, Back  
 Hardware Type: Satin Nickel, LH Type: None, RH Finger Pull, Top East Lintel: None  
 Sill/Dash Lintel: None  
 Corner Type: Aluminum Screen  
 Hardware Color: Bronze  
 Screen Color: Bronze  
 Screen Mesh Type: Bright View Mesh  
 Jamb Depth: 1 3/8"



**APT 4 BENNETT MRKT ST**  
 SCALE: 3/4" = 1'-0"

- ① Head
- ② Sill
- ③ Checkrail
- ④ Jamb
- ⑤ Divided Lite

**SPECIFICATIONS**

Line # 14  
 Qty: 1  
 Mark Line: APT 4 BENNETT MRKT ST  
 Product Line: Window  
 Unit Description: Double Hung G2  
 Rough Opening: 40 3/4" X 52 1/4"  
 Frame Size: 39 3/4" X 51 1/4"  
 Maximum Opening: 40 1/8" X 52 1/4"  
 Sash Opening: 40 3/4" X 52 1/4"  
 Inset Opening: 40 3/4" X 52 1/4"  
 Exterior Finish: Stone White  
 Species: Pine  
 Interior Finish: Painted Interior Finish - White  
 Unit Type: Double Hung G2  
 Call Number: None  
 Glass Information: IG, Low E2 w/Argon, Back  
 Hardware Type: Satin Nickel, LH Type: None, RH Finger Pull, Top East Lintel: None  
 Sill/Dash Lintel: None  
 Corner Type: Aluminum Screen  
 Hardware Color: Bronze  
 Screen Color: Bronze  
 Screen Mesh Type: Bright View Mesh  
 Jamb Depth: 1 3/8"



















ORDERING PROCEDURES WITH REFERENCE TO SHOP DRAWINGS:  
 Shop drawings are prepared by Marvin and their production facilities. The drawings are subject to change without notice. The manufacturer's approval of the shop drawings must be retained in the Architectural Record. The shop drawings are not to be used for construction purposes. No responsibility for any errors or omissions in the shop drawings or for any damage to property or persons is assumed by Marvin.

REVISION

CREATED: 05/07/2024

PK VERSION: 0004.08.01

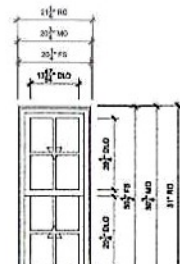
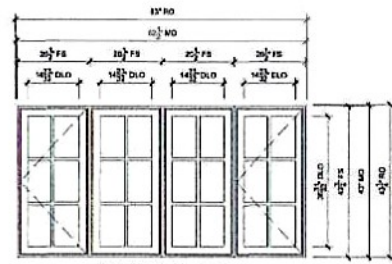
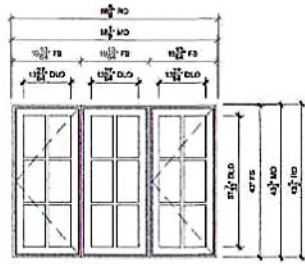
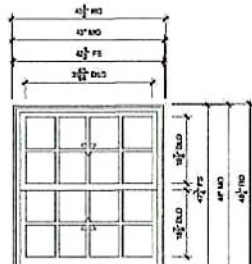
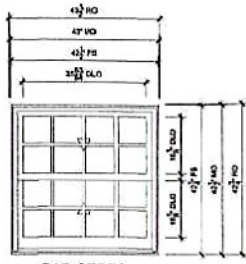
PROJECT: MAINE COAST BLDG DPHN STRIKER RESTAU / MAINE COAST BLDG DPHN RESTAURANT

DIST/DEALER: ELDRIDGE LUMBER & HARDWARE-YORK-00

OWNER: HEATHER DITZEL

QUOTES: Z2E185E

SHEET  
 1  
 OF 3



**SPECIFICATIONS**

Line # 1  
 Qty: 1  
 Max LHM BAR CERES  
 Product Line: LHM  
 Unit Description: Double Hung G2  
 Rough Opening: 43 1/2" X 42 3/4"  
 Frame Size: 42 1/2" X 42 1/4"  
 Masonry Opening: 42 1/2" X 42 1/4"  
 Sash Opening: 43 1/2" X 42 3/4"  
 Inset Opening: 43 1/2" X 42 3/4"  
 Exterior Finish: Stone White  
 Sashnet: Fibre  
 Interior Finish: Painted Interior Finish - White  
 Unit Type: Double Hung G2  
 Call Number: None  
 Glass Information: IG, Low E2 w/Argon, Black  
 Grids: Type: 2W Rectangular SCL W/ Spacer - Black  
 Hardware Type: Soft Lock, L1 Type: None, No Finger Pad, Top Sash Lock: None,  
 Bottom Sash Lock: None  
 Screen Type: Aluminum Screen  
 Hardware Color: Bronze  
 Screen Removal Color: Stone White  
 Screen Mesh Type: Bright View Mesh  
 Jamb Depth: 4 5/8"

**SPECIFICATIONS**

Line # 2  
 Qty: 2  
 Max LHM DINING  
 Product Line: LHM  
 Unit Description: Double Hung G2  
 Rough Opening: 43 1/2" X 48 1/4"  
 Frame Size: 42 1/2" X 48 1/4"  
 Masonry Opening: 43 1/2" X 48 1/4"  
 Sash Opening: 43 1/2" X 48 1/4"  
 Inset Opening: 43 1/2" X 48 1/4"  
 Exterior Finish: Stone White  
 Sashnet: Fibre  
 Interior Finish: Painted Interior Finish - White  
 Unit Type: [A1A2] Casement, Left/Right,  
 [A2] Casement, Stationary  
 Call Number: None  
 Glass Information: IG, Low E2 w/Argon, Black  
 Grids: Type: 2W Rectangular SCL W/ Spacer - Black  
 Hardware Type: Soft Lock, L1 Type: None, No Finger Pad, Top Sash Lock: None,  
 Bottom Sash Lock: None  
 Screen Type: Aluminum Screen  
 Hardware Color: Bronze  
 Screen Removal Color: Stone White  
 Screen Mesh Type: Bright View Mesh  
 Jamb Depth: 4 5/8"

**SPECIFICATIONS**

Line # 3  
 Qty: 1  
 Max LHM BACK BAR CERES  
 Product Line: LHM  
 Unit Description: Slender Assembly  
 Rough Opening: 58 1/4" X 41 1/2"  
 Frame Size: 57 5/8" X 41"  
 Masonry Opening: 58 1/4" X 43 1/4"  
 Sash Opening: 58 1/4" X 43 1/4"  
 Inset Opening: 58 1/4" X 43 1/4"  
 Exterior Finish: Stone White  
 Sashnet: Fibre  
 Interior Finish: Painted Interior Finish - White  
 Unit Type: [A1A2] Casement, Left/Right,  
 [A2] Casement, Stationary  
 Call Number: None  
 Glass Information: IG, Low E2 w/Argon, Black  
 Grids: Type: 2W Rectangular SCL W/ Spacer - Black  
 Hardware Type: [A1A2] Folding Handle, No Soft Seal Lockset,  
 [A2] None  
 Screen Type: [A1A2] Aluminum Screen, [A2] None  
 Hardware Color: [A1A2] Silver, [A2] Bronze  
 Screen Mesh Type: [A1A2] Bright View Mesh, [A2] None  
 Jamb Depth: 4 5/8"

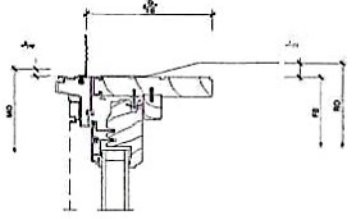
**SPECIFICATIONS**

Line # 4  
 Qty: 1  
 Max LHM BACK BAR CERES  
 Product Line: LHM  
 Unit Description: Slender Assembly  
 Rough Opening: 58 1/4" X 43 1/4"  
 Frame Size: 57 5/8" X 42 1/4"  
 Masonry Opening: 58 1/4" X 43 1/4"  
 Sash Opening: 58 1/4" X 43 1/4"  
 Inset Opening: 57 5/8" X 43 1/4"  
 Exterior Finish: Stone White  
 Sashnet: Fibre  
 Interior Finish: Painted Interior Finish - White  
 Unit Type: [A1A2] Casement, Left/Right,  
 [A2] Casement, Stationary  
 Call Number: None  
 Glass Information: IG, Low E2 w/Argon, Black  
 Grids: Type: 2W Rectangular SCL W/ Spacer - Black  
 Hardware Type: [A1A2] Folding Handle, No Soft Seal Lockset,  
 [A2] None  
 Screen Type: [A1A2] Aluminum Screen, [A2] None  
 Hardware Color: [A1A2] Silver, [A2] Bronze  
 Screen Mesh Type: [A1A2] Bright View Mesh, [A2] None  
 Jamb Depth: 4 5/8"

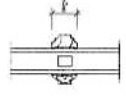
**SPECIFICATIONS**

Line # 5  
 Qty: 2  
 Max LHM BOW ST ENTRANCE  
 Product Line: LHM  
 Unit Description: Double Hung G2  
 Rough Opening: 21 1/4" X 51"  
 Frame Size: 20 1/4" X 51 1/2"  
 Masonry Opening: 21 1/4" X 51"  
 Sash Opening: 21 1/4" X 51"  
 Exterior Finish: Stone White  
 Sashnet: Fibre  
 Interior Finish: Painted Interior Finish - White  
 Unit Type: Double Hung G2  
 Call Number: None  
 Glass Information: IG, Tempered Low E2 w/Argon, Black  
 Grids: Type: 2W Rectangular SCL W/ Spacer - Black  
 Hardware Type: Soft Lock, L1 Type: None, No Finger Pad, Top Sash Lock: None,  
 Bottom Sash Lock: None  
 Screen Type: Aluminum Screen  
 Hardware Color: Bronze  
 Screen Removal Color: Stone White  
 Screen Mesh Type: Bright View Mesh  
 Jamb Depth: 4 5/8"

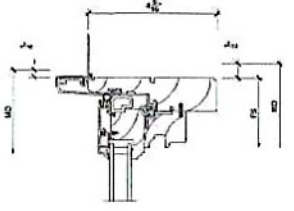




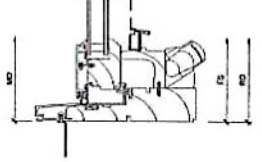
1/2 Head SCALE: 1/4" = 1'-0"



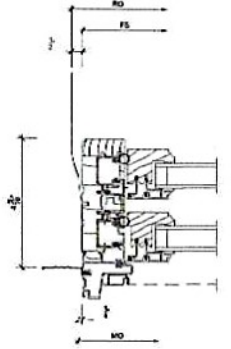
4/2 Divided Lite SCALE: 1/4" = 1'-0"



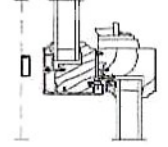
7/2 Head SCALE: 1/4" = 1'-0"



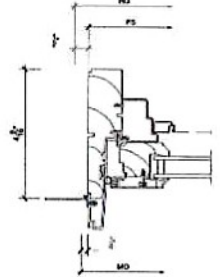
10/4 Sill SCALE: 1/4" = 1'-0"



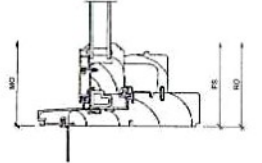
2/2 Jamb SCALE: 1/4" = 1'-0"



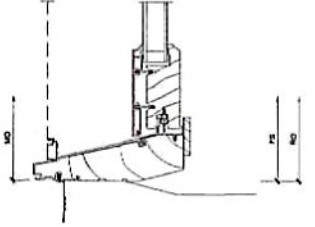
8/2 Checkrail SCALE: 1/4" = 1'-0"



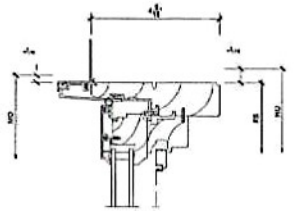
9/2 Jamb SCALE: 1/4" = 1'-0"



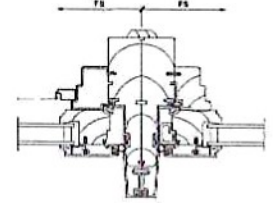
11/2 Sill SCALE: 1/4" = 1'-0"



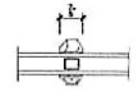
3/2 Sill SCALE: 1/4" = 1'-0"



6/2 Head SCALE: 1/4" = 1'-0"



5/2 Vertical Mullion SCALE: 1/4" = 1'-0"

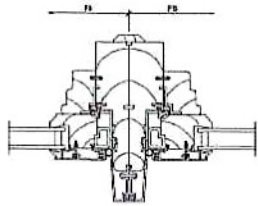


12/2 Divided Lite SCALE: 1/4" = 1'-0"



CONSULT PRODUCT WITH REFERENCE TO SPEC DRAWINGS. All drawings are the property of Marvin Windows and Doors, Inc. and are not to be reproduced without the written consent of Marvin Windows and Doors, Inc. All dimensions are in inches unless otherwise specified. All dimensions are to face unless otherwise specified. All dimensions are to be maintained throughout the life of the product. All dimensions are to be maintained throughout the life of the product. All dimensions are to be maintained throughout the life of the product.

PROJECT: MAINE COAST BUILDERS DOLPHIN RESTAURANT / MAINE COAST BUILDERS DOLPHIN RESTAURANT  
 DIST/DEALER: ELDREDE LUMBER & HARDWARE, YORK, CO  
 DRAWN: KATHA DITZEL  
 QUOTE#: 2211525  
 PK VERSION: 0004.08.01  
 CREATED: 05/07/2024  
 REVISION:



1  
1 Vertical Mullion SCALE: 6" = 1'-0"

4  
3 NOT USED SCALE: 6" = 1'-0"

7  
3 NOT USED SCALE: 6" = 1'-0"

10  
1 NOT USED SCALE: 6" = 1'-0"

2  
1 NOT USED SCALE: 6" = 1'-0"

3  
3 NOT USED SCALE: 6" = 1'-0"

4  
3 NOT USED SCALE: 6" = 1'-0"

11  
1 NOT USED SCALE: 6" = 1'-0"

1  
1 NOT USED SCALE: 6" = 1'-0"

8  
3 NOT USED SCALE: 6" = 1'-0"

9  
3 NOT USED SCALE: 6" = 1'-0"

12  
1 NOT USED SCALE: 6" = 1'-0"



ORDERING AND INSTALLATION INSTRUCTIONS TO BE OBTAINED FROM THE MARVIN REPRESENTATIVE IN YOUR AREA. BEFORE ORDERING, THE MARVIN REPRESENTATIVE AND OTHER PRODUCTS SUPPLIED WITH THIS WINDOW UNIT MUST BE ORDERED TOGETHER WITH THE MARVIN WINDOW UNIT. APPROVED SUPPLIERS OF FINISH MATERIALS AND GLASS ARE LISTED IN THE MARVIN WINDOW UNIT INSTALLATION MANUAL. MARVIN WINDOW AND DOOR UNITS ARE NOT TO BE USED IN APPLICATIONS WHERE THE MARVIN WINDOW AND DOOR UNITS ARE NOT DESIGNED TO BE USED. MARVIN WINDOW AND DOOR UNITS ARE NOT TO BE USED IN APPLICATIONS WHERE THE MARVIN WINDOW AND DOOR UNITS ARE NOT DESIGNED TO BE USED.

PROJECT: MAINE COAST BLDGS DOPLIN STRIKER RESTA / MAINE COAST BLDGS DOPLIN RESTAURANT

DIST/DEALER: ELDRIDGE LUMBER & HARDWARE-YORK-00

DRAWN: HEATHER DITZEL

QUOTE#: 23E195E

PK: VESCON 0004 08 01

CREATED: 05/07/2024

REV: 0000

SHEET  
3  
OF 3