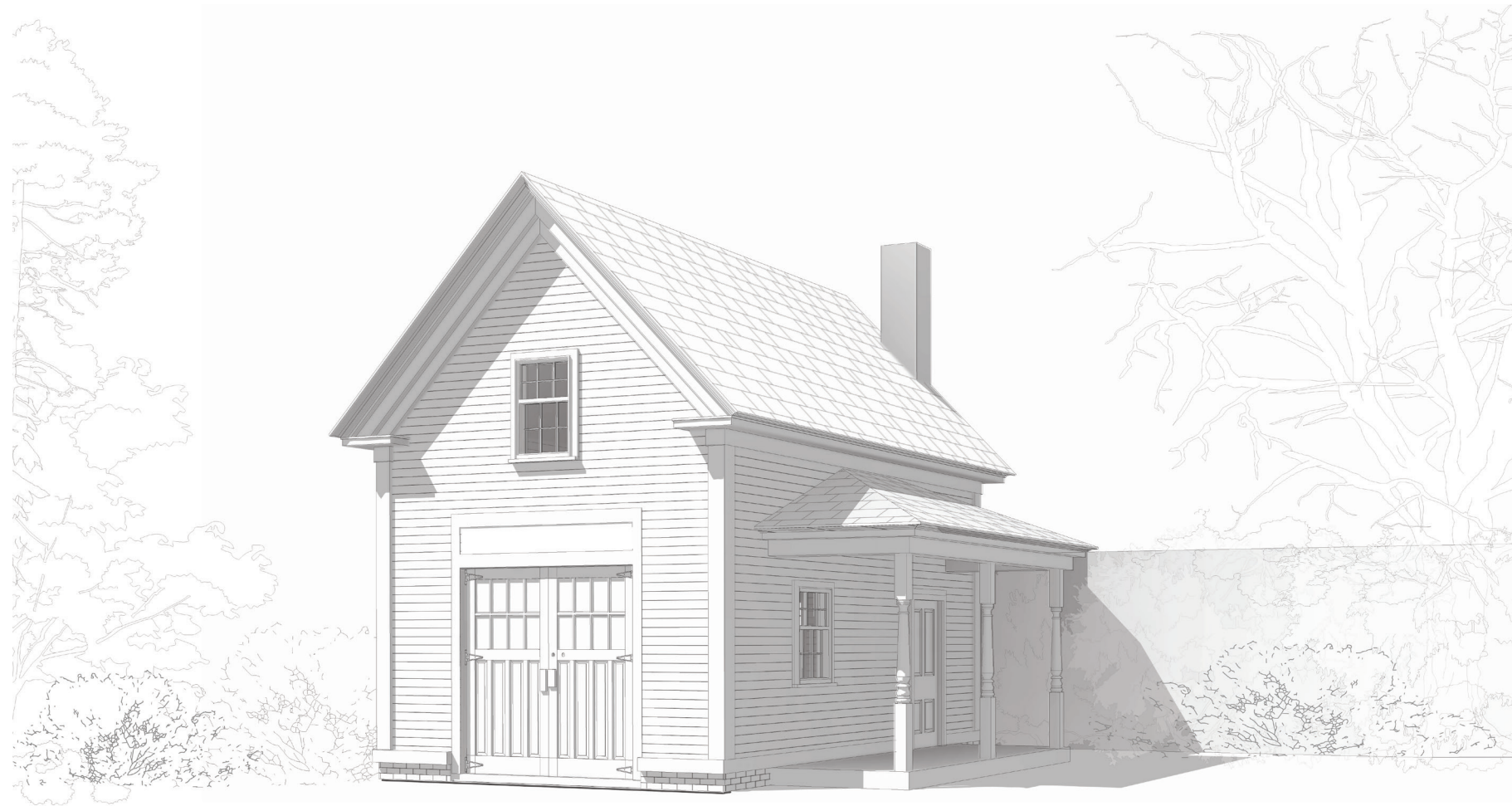


64 MT VERNON

PORTSMOUTH, NH



INSURANCE MAPS

OF

Portsmouth

NEW HAMPSHIRE

PUBLISHED BY THE

SANBORN MAP COMPANY

11 BROADWAY, NEW YORK

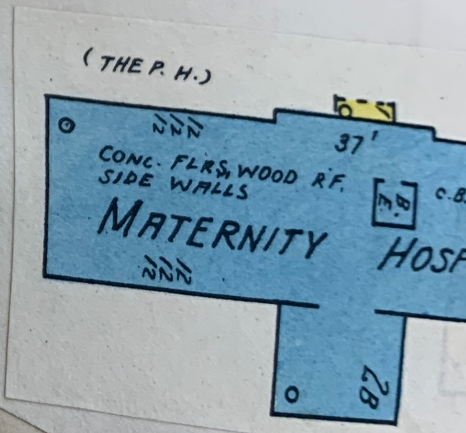
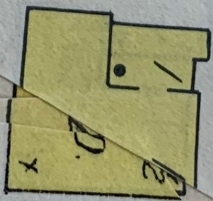
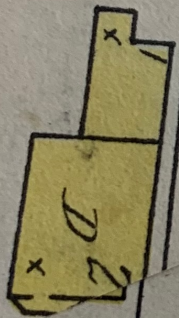
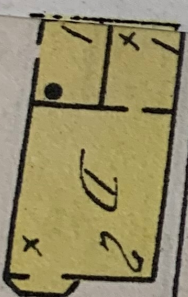
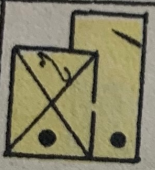
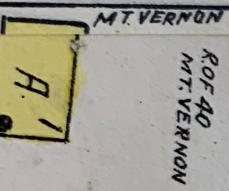
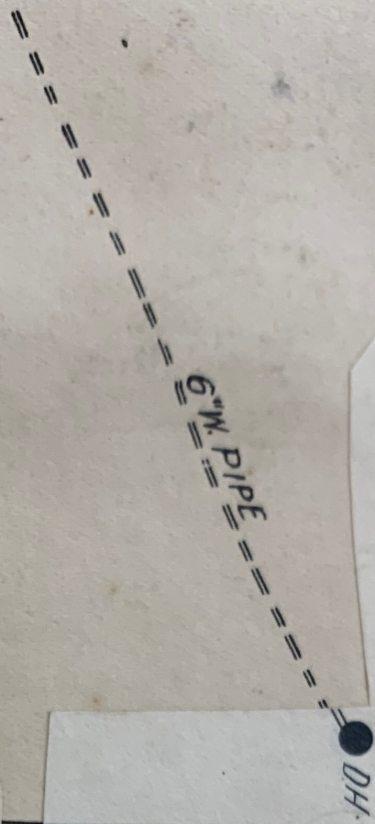
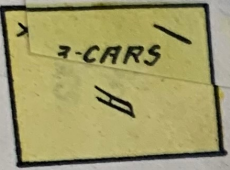
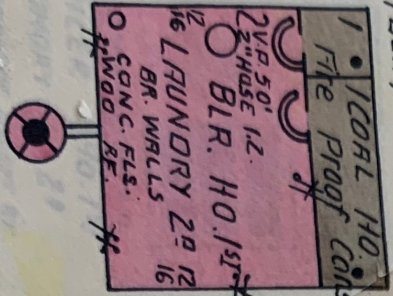
1920

COPYRIGHT 1920 BY THE SANBORN MAP CO.

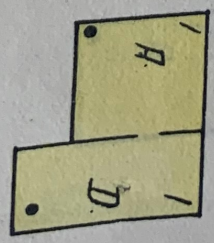
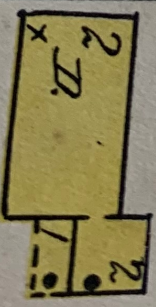
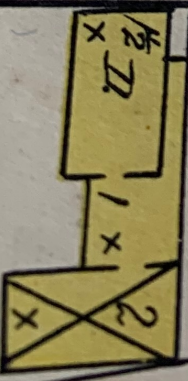
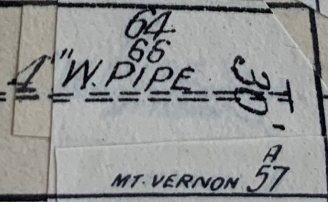
ALL RIGHTS RESERVED. NO PART OF THIS MAP MAY BE REPRODUCED IN ANY FORM WITHOUT WRITTEN PERMISSION FROM THE SANBORN MAP COMPANY.


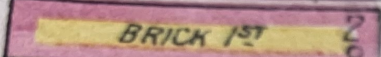
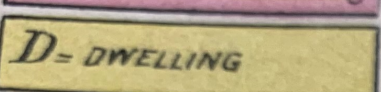
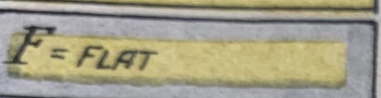
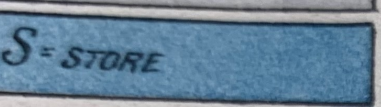
GREAT CARE HAS BEEN EXERCISED IN THE PRODUCTION OF OUR PUBLICATIONS AND OUR SERVICE, BUT ABSOLUTE ACCURACY IS NOT GUARANTEED.

Copyright renewed
1947 by
Sanborn Map Co.



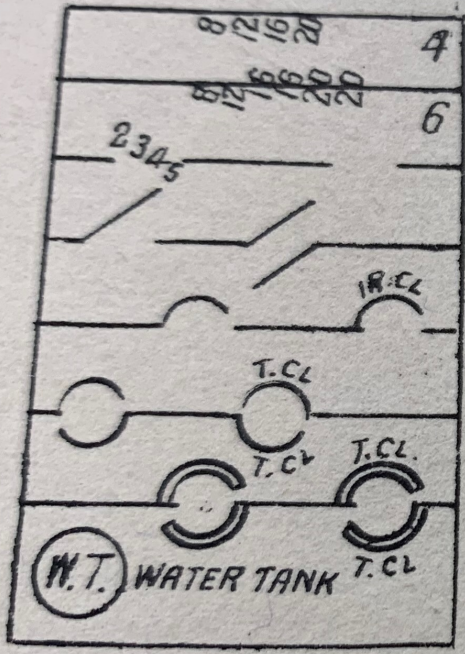
MT. VERNON
 40
 50
 39
 49
 57



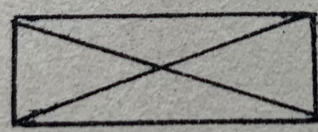
-  SHINGLE ROOF
-  BRICK 1st
-  D = DWELLING
-  F = FLAT
-  S = STORE

Brick veneered building
 Brick and frame "
 Frame building
 " " iron clad
 Stone building

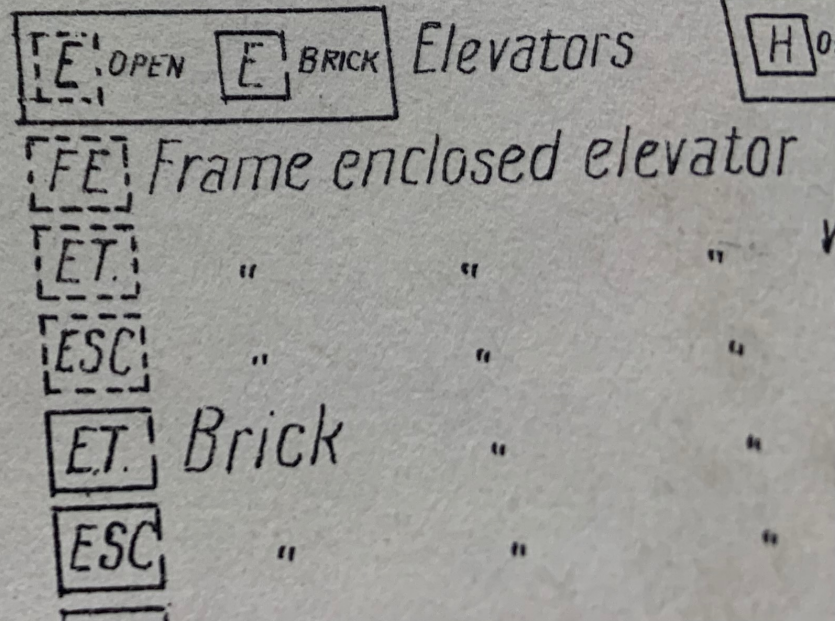
Windows 1st & 2^d with iron shutters
 tin clad shutters, and 5th & 6th with
 HORIZONTAL UP.B VERTICAL Steam b
 BRICK IR.CH IRON Chimneys F.P. Fr
 6" W. PIPE Water pipes an
 SINGLE D.H DOUBLE T.H TRIPLE Hyd

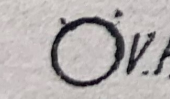

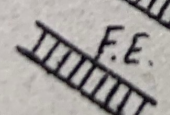


Figures-8,12,16,20 - indicate thickness of wall in inches.
 Wall without opening and size in inches
 " with openings Figures indicate on which floor.
 Openings with wired glass doors.
 " " single iron or iron clad doors.
 " " double " " tin clad doors
 " " standard steel vault doors, or standa



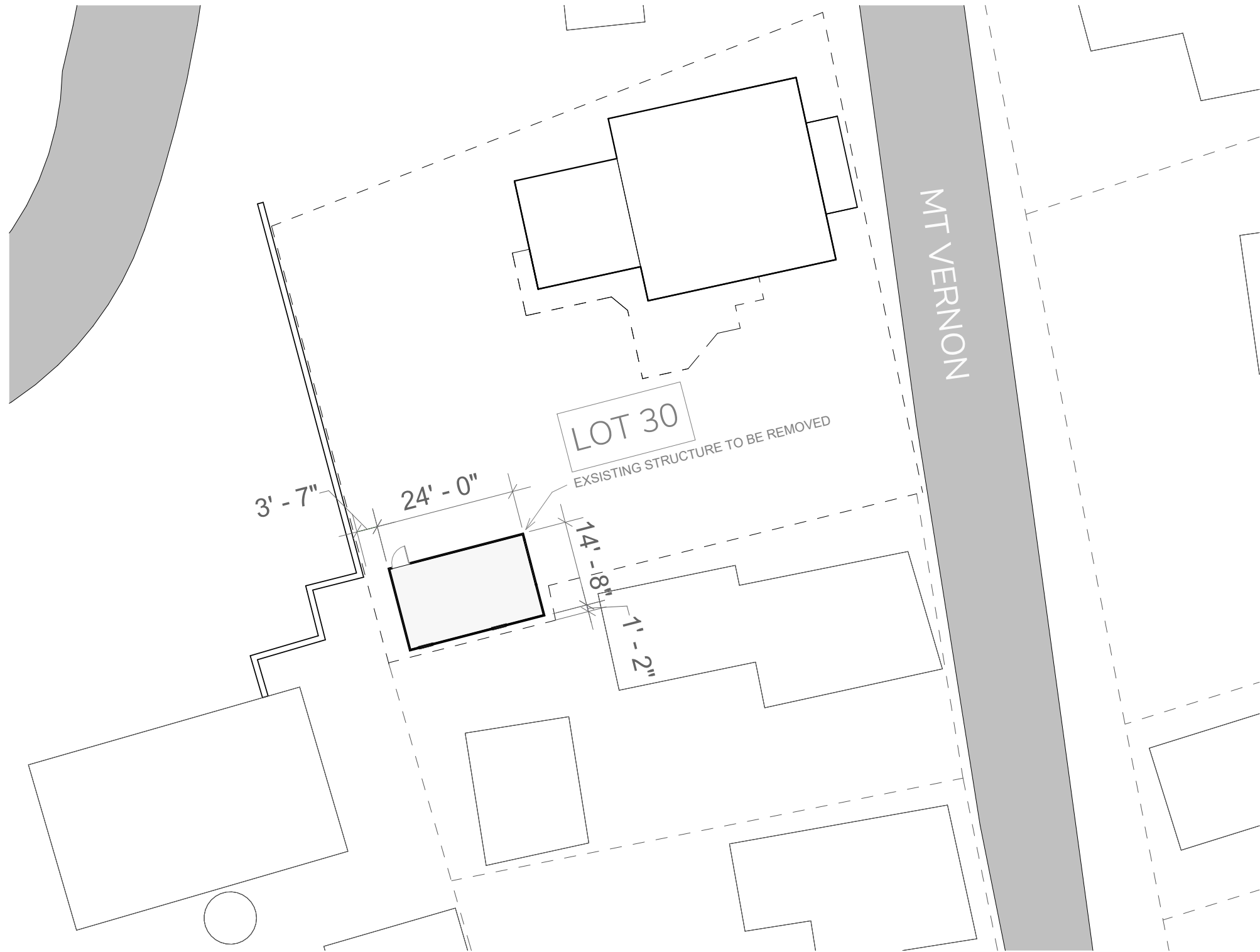
Stable

 Elevators
 Frame enclosed elevator
 " " "
 " " "
 Brick " "
 " " "

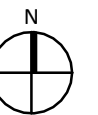
 V.P. Vertical pipe or stand pipe
 " " with fire escape
 Fire escape
 AFA Automatic fire alarm.
 I.E.P. Independent electric plant

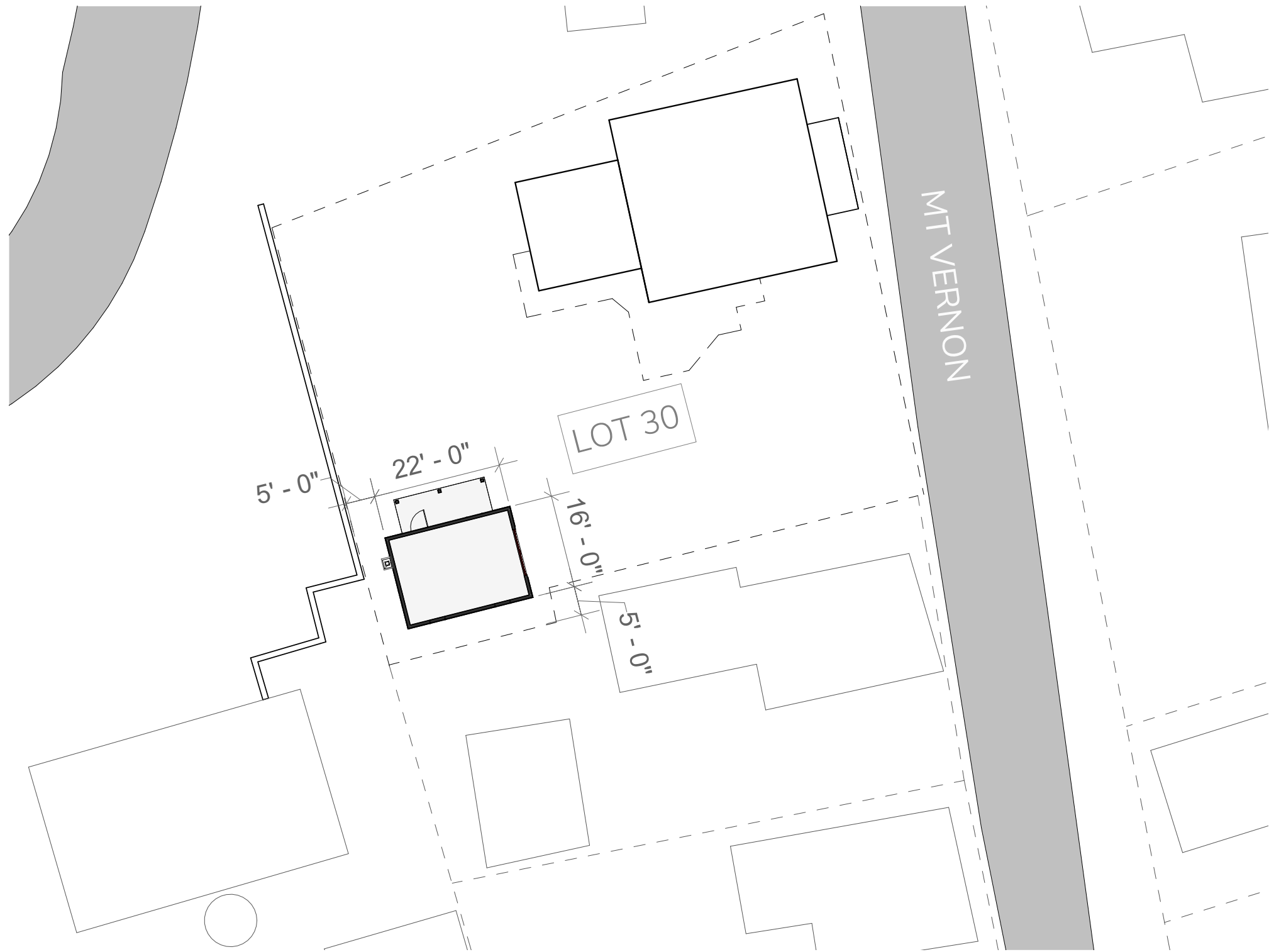




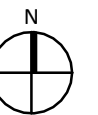


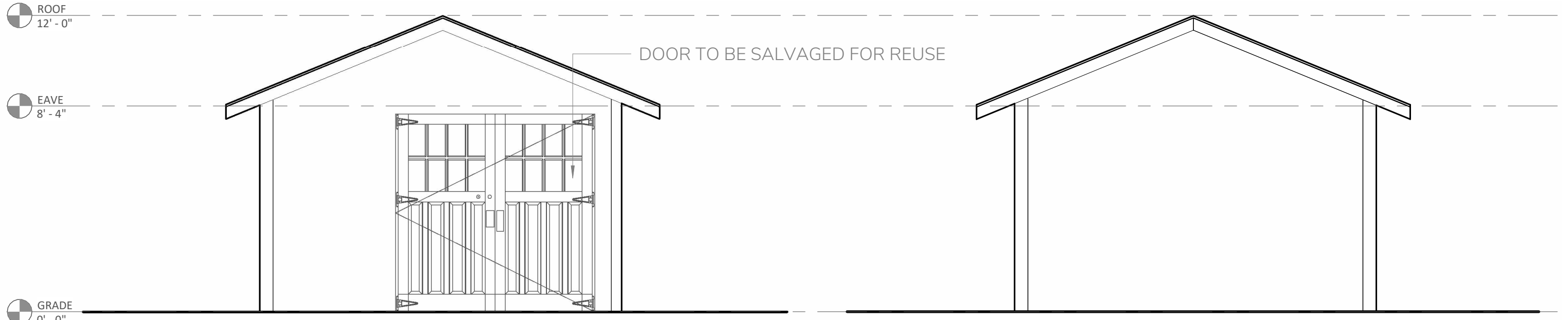
EXISTING SITE PLAN
1/16" = 1'-0"





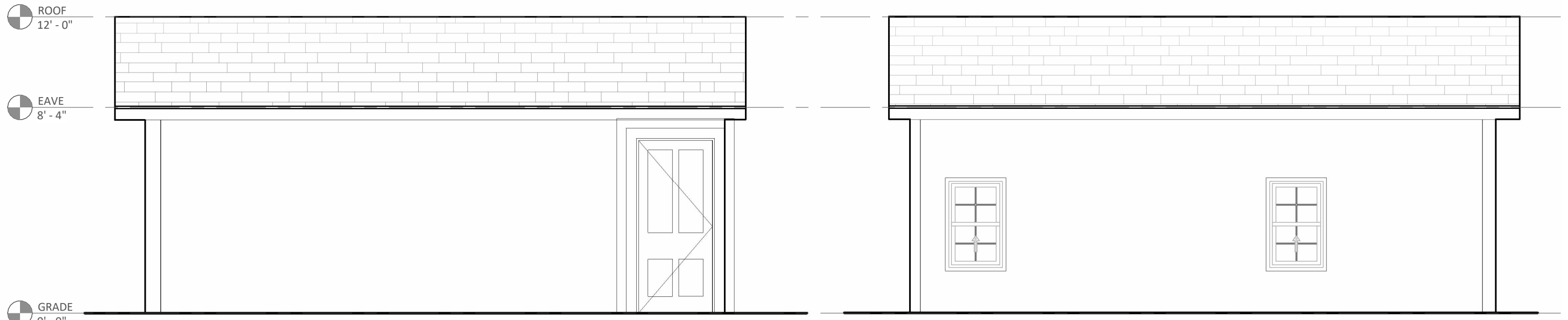
PROPOSED SITE PLAN
1/16" = 1'-0"





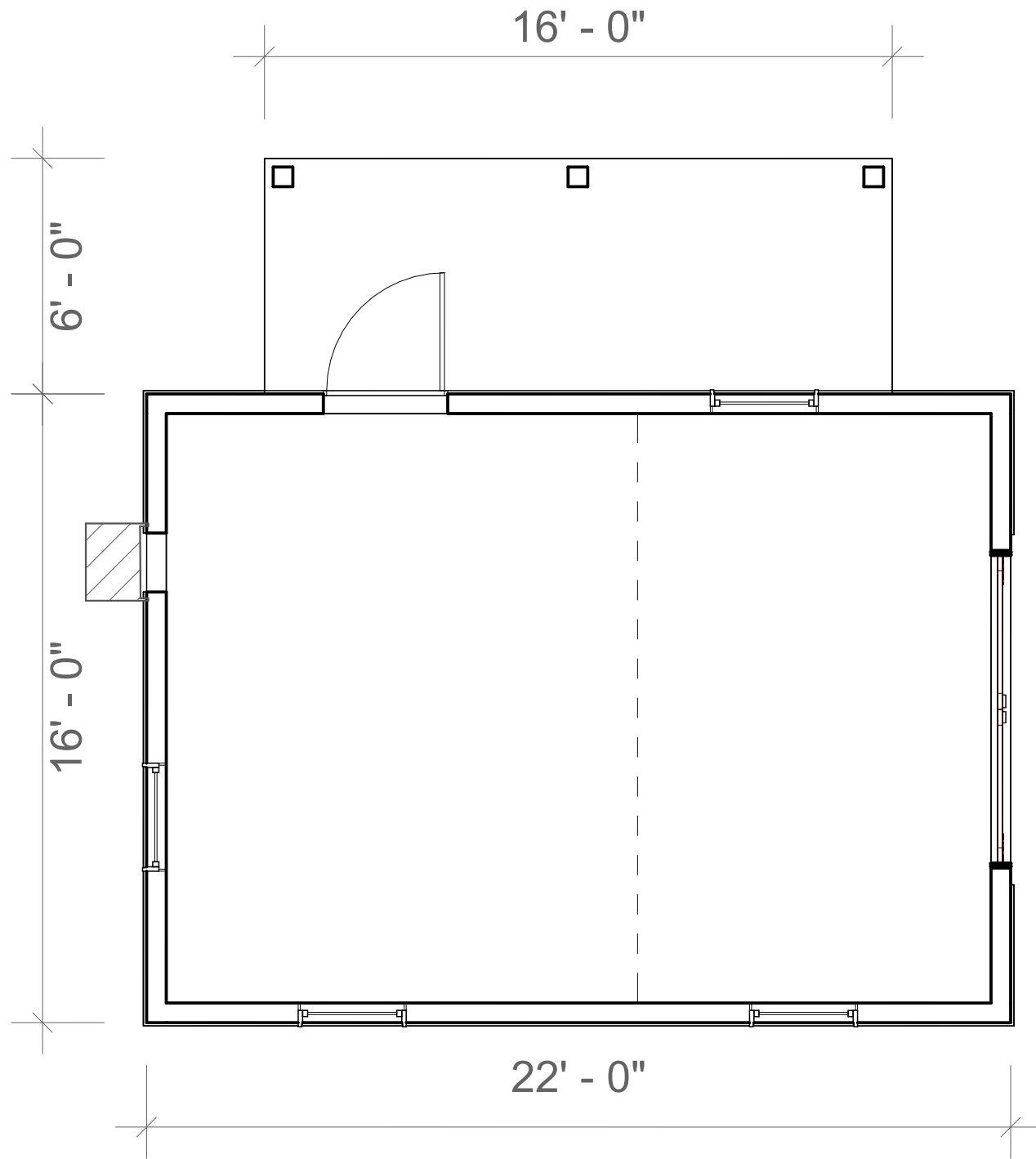
EXISTING EAST ELEVATION
1/4" = 1'-0"

EXISTING WEST ELEVATION
1/4" = 1'-0"

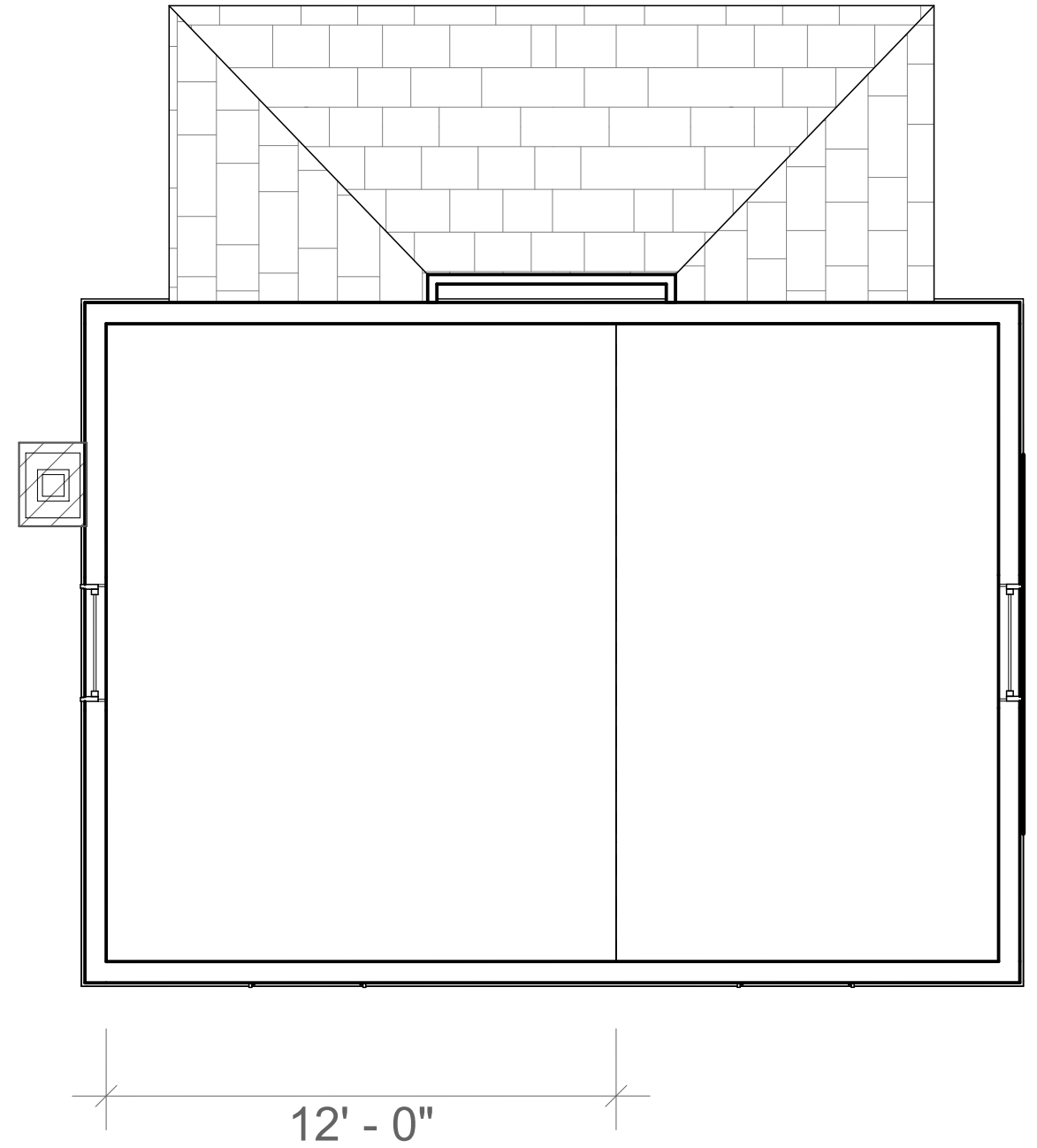


EXISTING NORTH ELEVATION
1/4" = 1'-0"

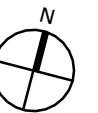
EXISTING SOUTH ELEVATION
1/4" = 1'-0"

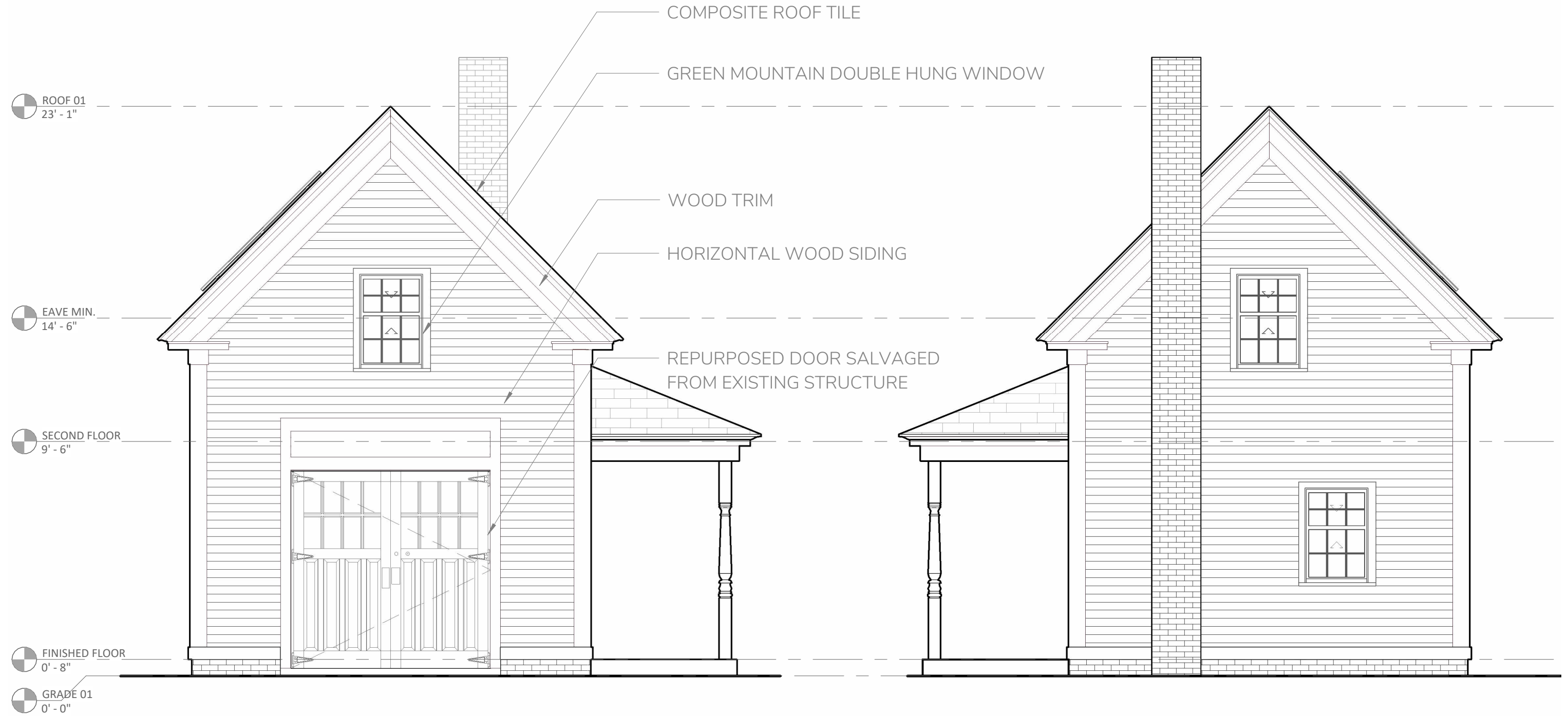


PROPOSED FIRST FLOOR PLAN
1/4" = 1'-0"



PROPOSED SECOND FLOOR PLAN
1/4" = 1'-0"





PROPOSED EAST ELEVATION
1/4" = 1'-0"

PROPOSED WEST ELEVATION
1/4" = 1'-0"



PROPOSED NORTH ELEVATION
1/4" = 1'-0"

PROPOSED SOUTH ELEVATION
1/4" = 1'-0"



East Facade



West Facade



Existing Shed to Be Demolished
North Facade



South Facade

Stipulations for 64 Mount Vernon St. Shed Renovation

1. Windows
 - a. All first floor windows will be Green Mountain double hung Milestone series 2624.
 - b. The second floor windows will match the size of Green Mountain 2420 windows.
The west side will be a Green Mountain DH Style Egress Window, which will look from the outside like a double hung, but open as a casement to meet fire code.
2. Chimney
The top of the chimney will be corbelled to match the house
3. Roof
The roof will be a composite slate similar to Inspire synthetic roofing tiles.