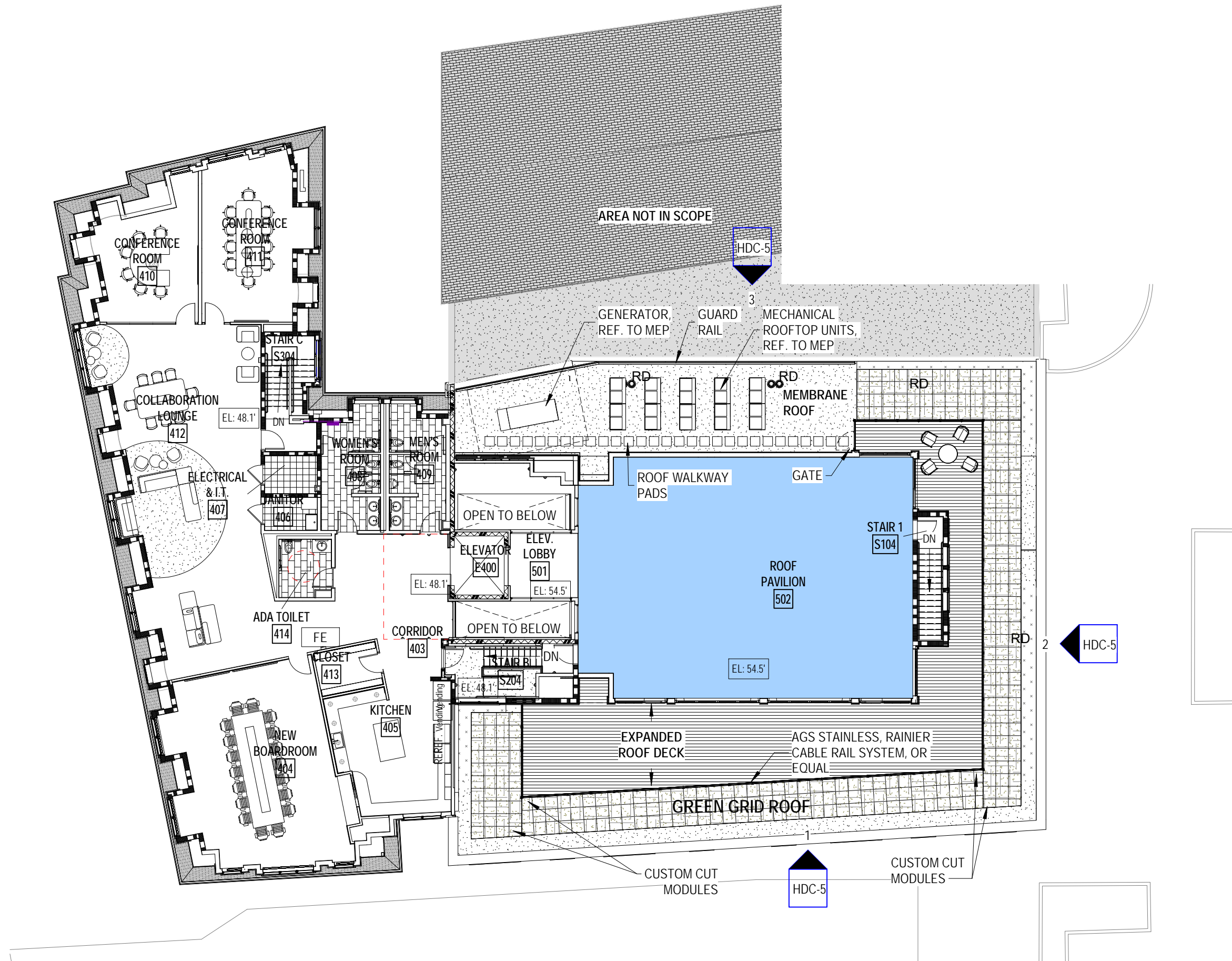
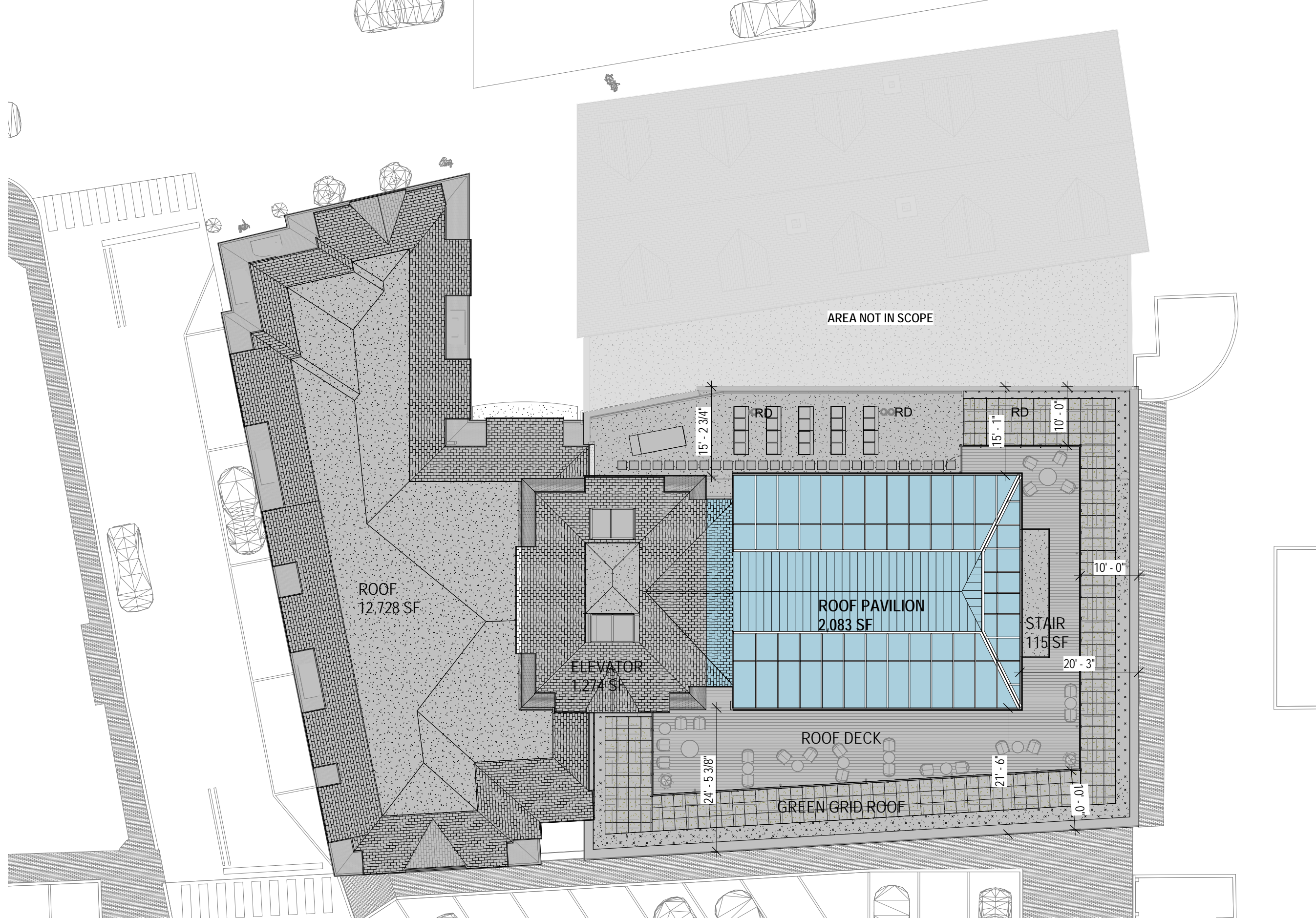




HDC-1 Aerial Perspective
 Novocure Flagship at 64 Vaughan Mall
 10/13/2023
 SCALE:





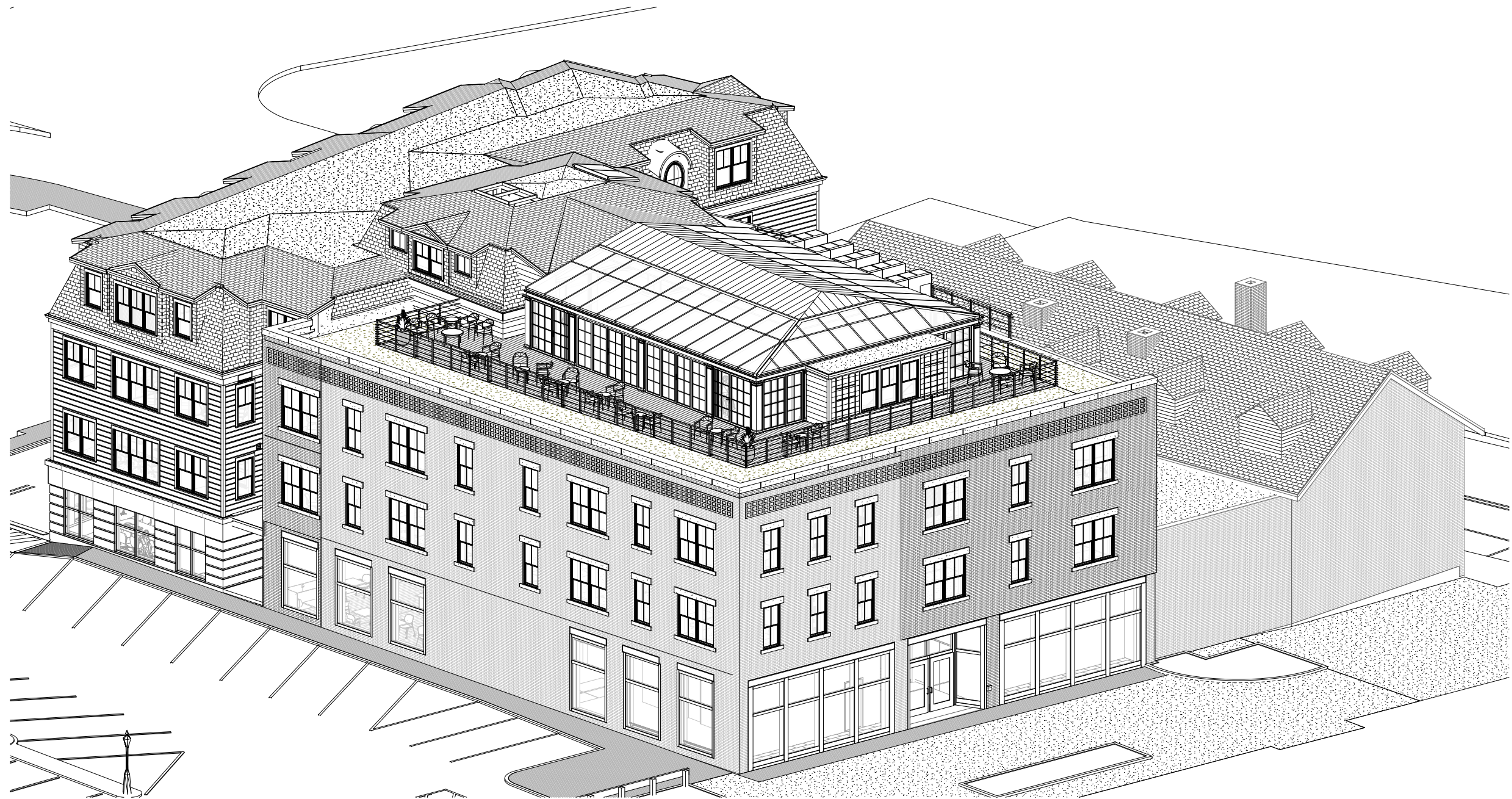
HDC-3 **ROOF AREA- PAVILION**
Novocure Flagship at 64 Vaughan Mall

10/13/2023
 SCALE: 1/16" = 1'-0"



ARCHITECTS
 INTERIORS
 PLANNERS

COPYRIGHT © 2022



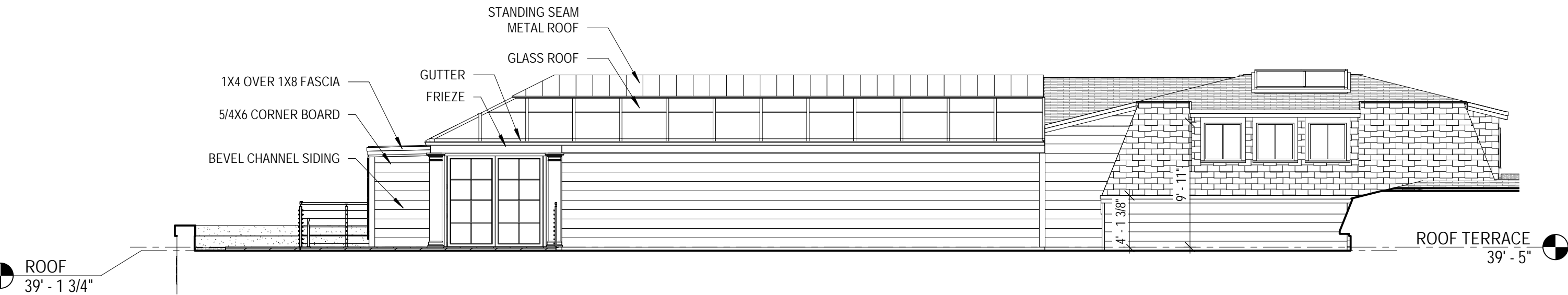
HDC-4 SOUTHEAST AXONOMETRIC - PROPOSED PAVILLION
Novocure Flagship at 64 Vaughan Mall

10/13/2023
SCALE:

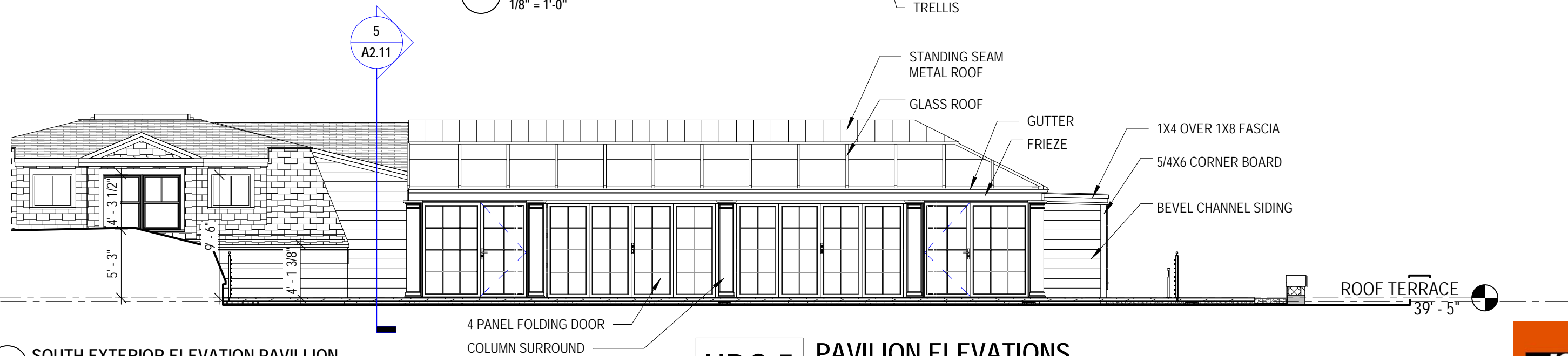
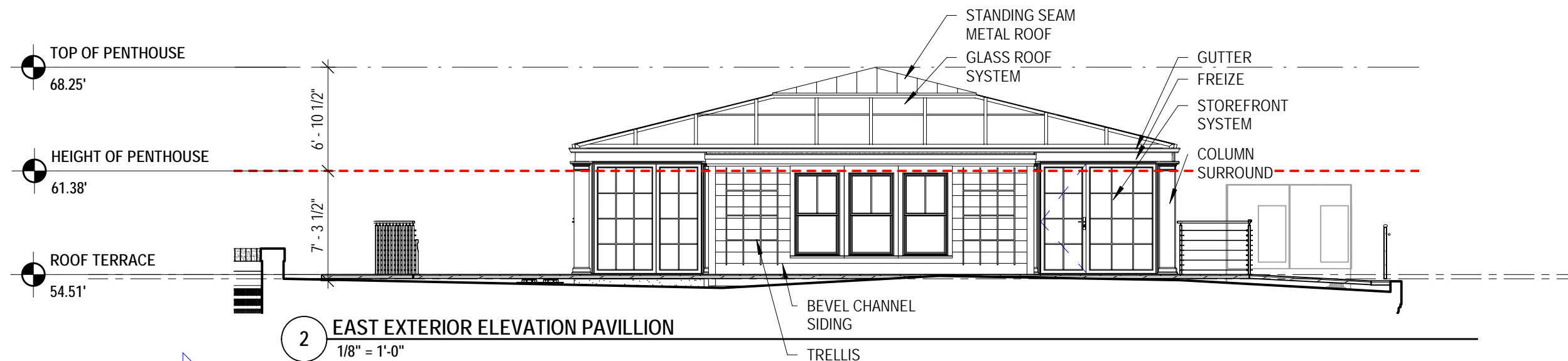


ARCHITECTS
INTERIORS
PLANNERS

COPYRIGHT © 2022



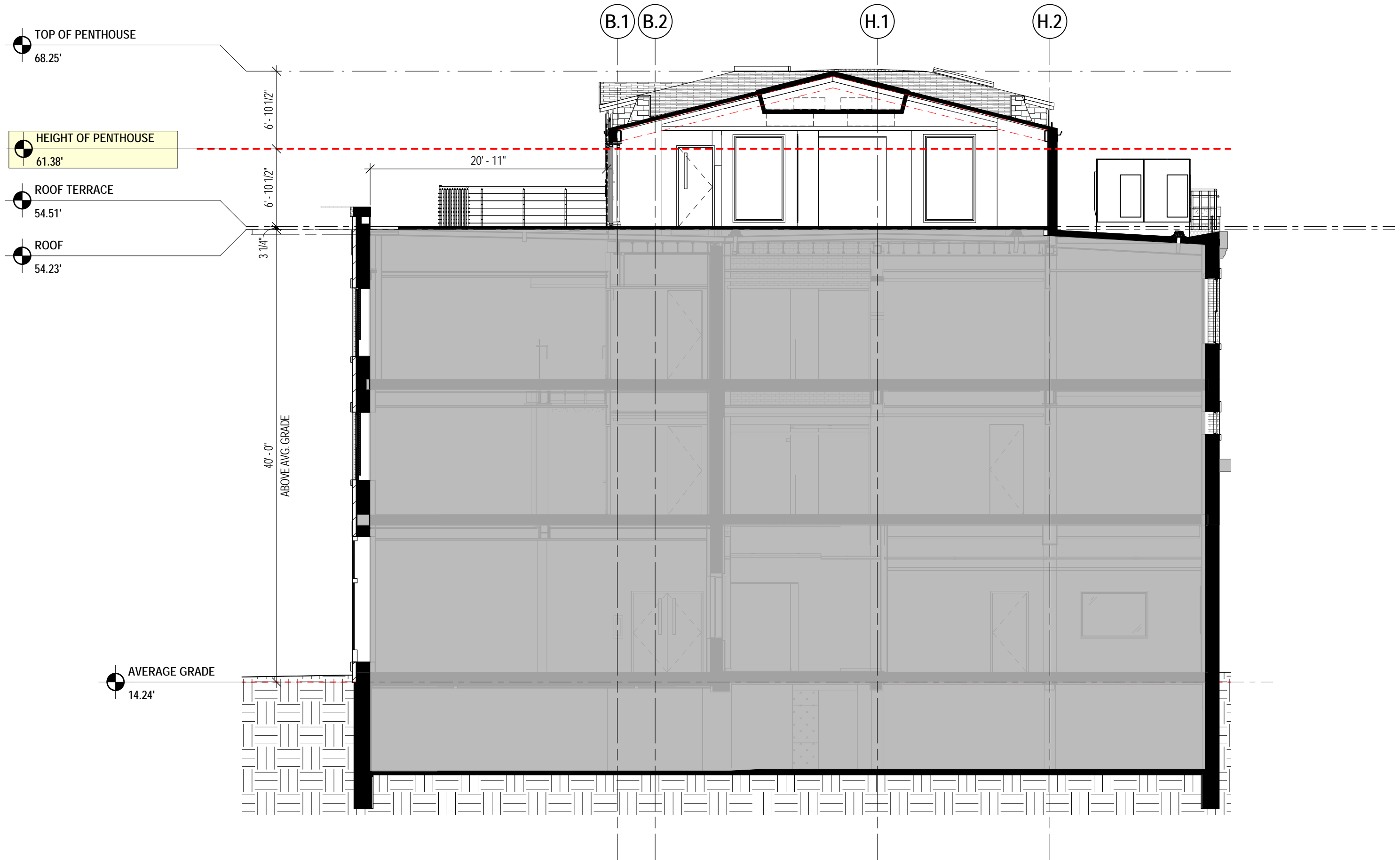
3 NORTH EXTERIOR ELEVATION PAVILLION
1/8" = 1'-0"



HDC-5 PAVILION ELEVATIONS

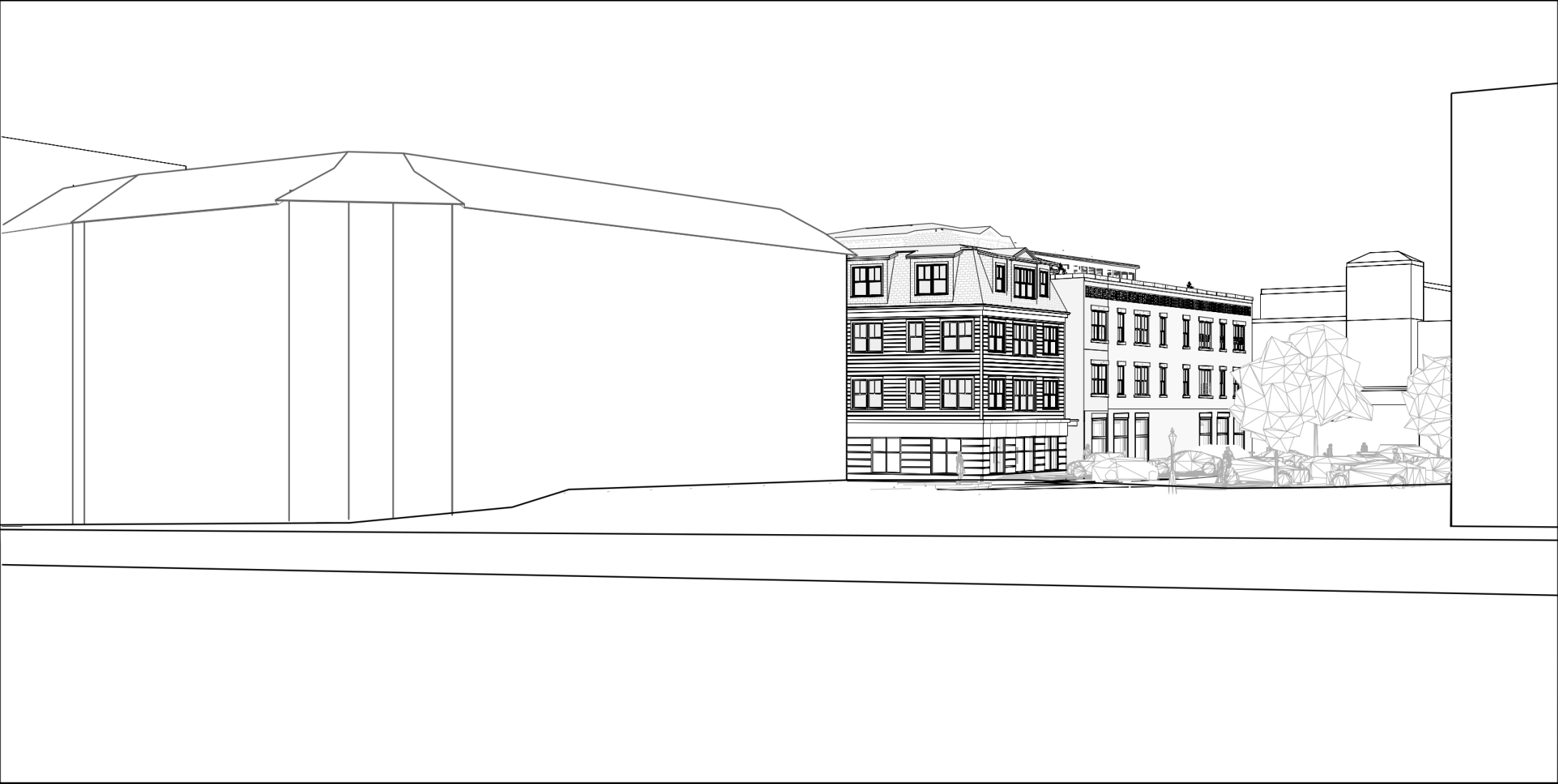
Novocure Flagship at 64 Vaughan Mall

10/13/2023
SCALE: 1/8" = 1'-0"



HDC-6 ENLARGED BUILDING SECTION
Novocure Flagship at 64 Vaughan Mall

10/13/2023
SCALE: 1/8" = 1'-0"



HDC-7

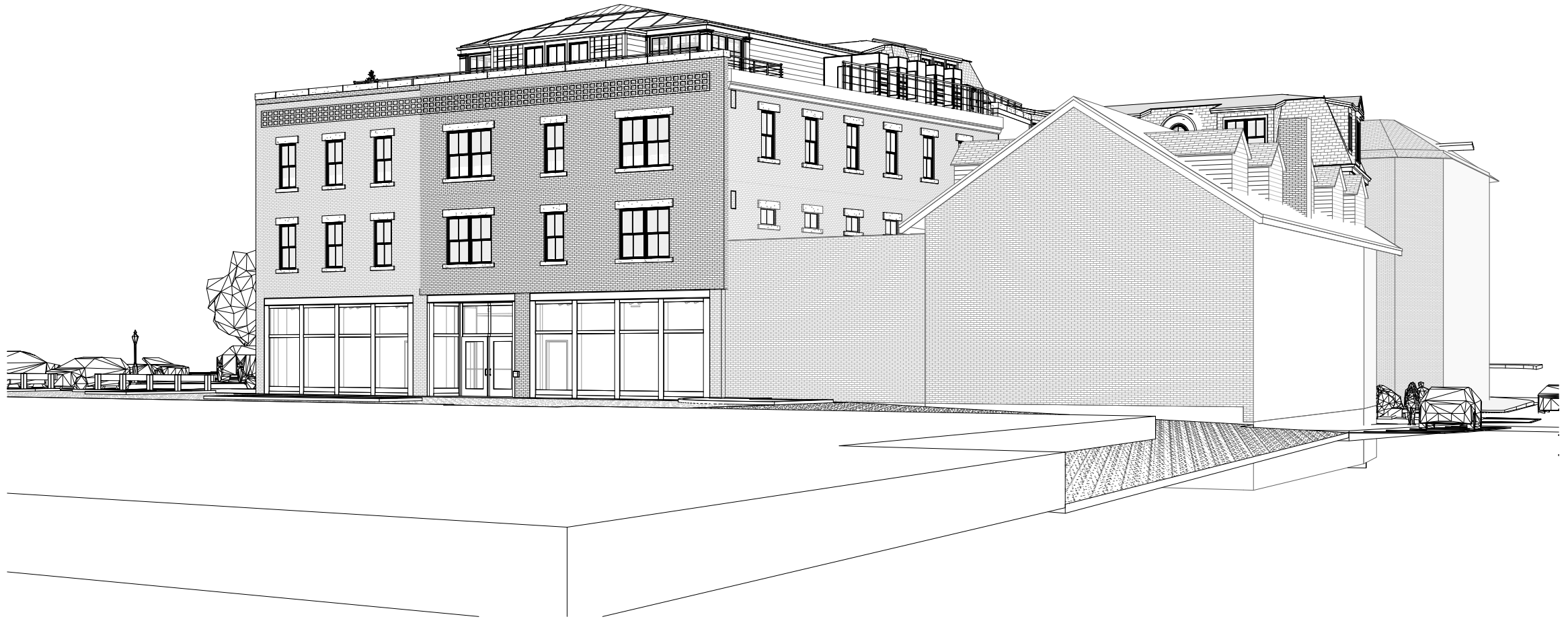
BRIDGE STREET PARKING LOT
Novocure Flagship at 64 Vaughan Mall

10/13/2023
SCALE:



ARCHITECTS
INTERIORS
PLANNERS

COPYRIGHT © 2022



HDC-8 HANOVER AND FLEET STREET
 Novocure Flagship at 64 Vaughan Mall
 10/13/2023
 SCALE:





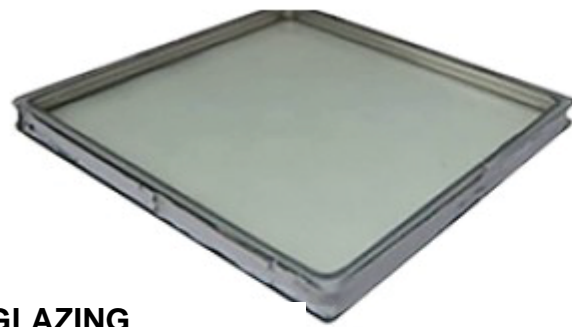
HDC-9 WORTH LOT VIEW 01
Novocure Flagship at 64 Vaughan Mall
10/13/2023
SCALE:



HDC-10 WORTH LOT VIEW 02
Novocure Flagship at 64 Vaughan Mall
10/13/2023
SCALE:



STANDING SEAM ROOF



GLAZING

LoE²-272

LoE²-272 is the most common and has a very slight green tint and assists in regulating temperatures in a conservatory, keeping it cooler in the summer and warmer in the winter.



FOLDING DOORS



CORNER POST

MATERIALS

Novocure Flagship at 64 Vaughan Mall

10/13/2023

SCALE: