

HDC

ADMINISTRATIVE APPROVALS

January 11, 2023

- | | | |
|----|---------------------------------------|------------------------------|
| 1. | 40 Court Street (LUHD-550) | -Request to Postpone |
| 2. | 11 Sheafe Street (LUHD-552) | - Request to Postpone |
| 3. | 55 Gates Street (LUHD-553) | - Request to Postpone |
| 4. | 44 Humphrey's Court (LUHD-554) | -Recommended Approval |

4. 44 Humphrey's Court

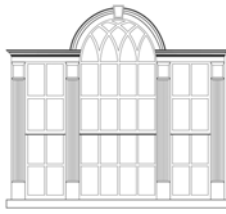
- Recommended Approval

Background: The applicant is seeking approval for the installation of egress windows.

Staff Comment: Recommended Approval

Stipulations:

1. _____
2. _____
3. _____



Green Mountain Window Co.

*Having Trouble Finding Traditional Style Windows That Meet Egress Code?
Problem Solved!*



Green Mountain Window's DH Style Egress Window[®]

Meets Egress with Windows As Small As 2'-0" x 3'-10" Sash Size (2' 2" x 4' 0" Frame Size)

Matches the Glazing of a Double Hung with Offset Glass for Top and Bottom Lites

Matches the Dual Sash Appearance of a Double Hung with Offset Sash Plane on Exterior

Available as a new construction window (shown above) or as an insert replacement unit. Any divided lite pattern available (2/2, 6/6, 12/12, etc) with glass sizes and stiles / rail dimensions that match traditional double hung windows. Optional meeting rail sash lock (shown above).

Patents Pending

These drawings, details, photos and specifications are the exclusive property of Green Mountain Window Company. These drawings, details, photos and specifications shall only be used for specifying Green Mountain Window Company products and for no other purposes, other than use by the US Patent and Trademark Office. No other use or reproduction of these drawings and specifications shall be permitted in any form, whether by electronic, mechanical, photocopying, recording or other means, without the prior written consent of Green Mountain Window, and any unauthorized use or reproduction is strictly prohibited.







