

28 SOUTH STREET
 LOT AREA 4792 SF

ALLOWABLE LOT COVERAGE 30%

PROPOSED LOT COVERAGE

EXIST. RESIDENCE	946 SF
EXIST SIDE PORCH	24 SF
EXIST GARAGE	371 SF
- BOX BAY ADDITION	46 SF
- REAR ADDITION	60 SF

1453 SF (30.3%)

NOTE: PLAN CHANGES ADDED TO "PROPERTY STAKEOUT SKETCH"
 BY ANNE WHITNEY ARCHITECT

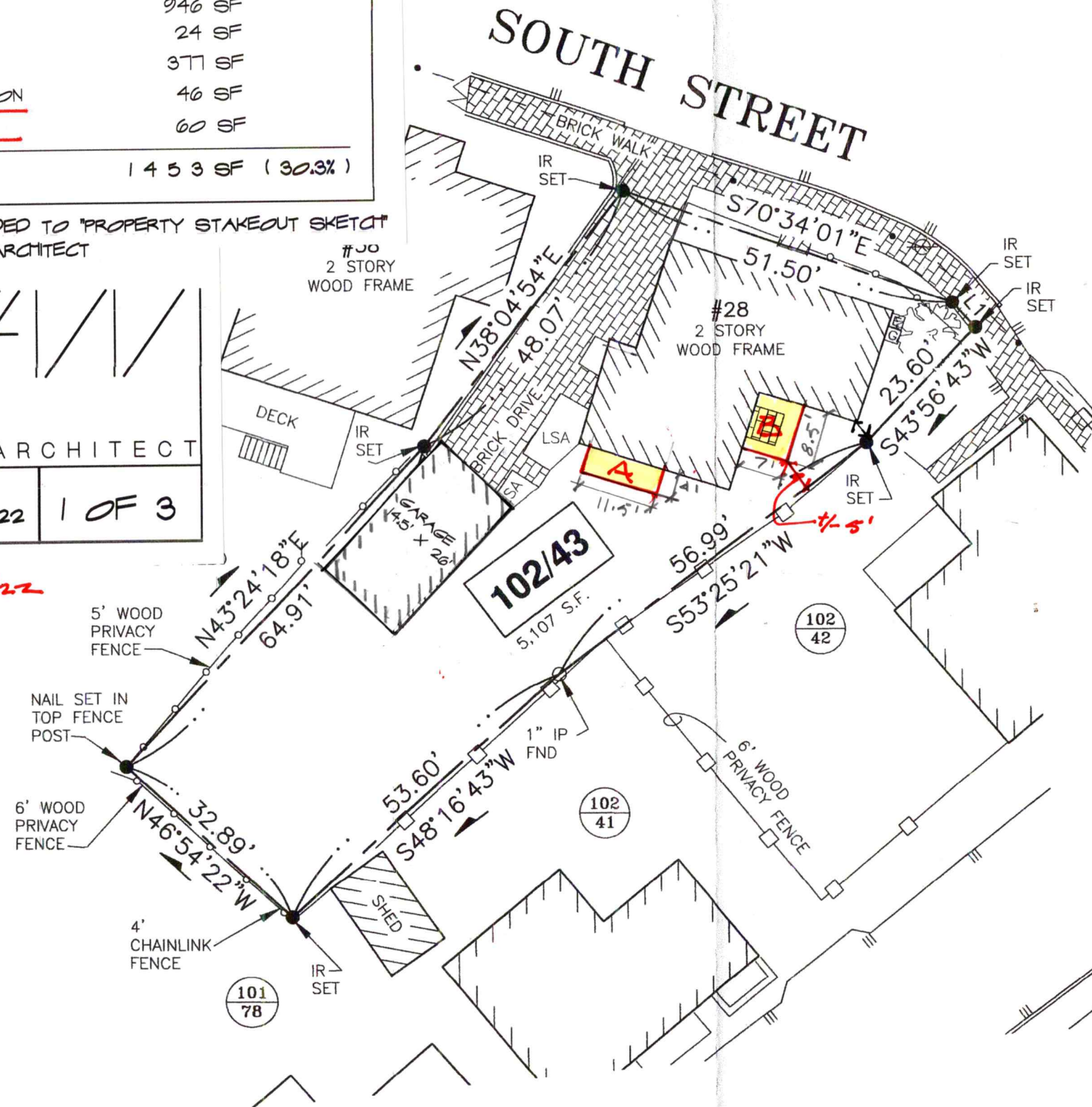
9 Sheafe Street
 Portsmouth
 NH 03801
 603-427-2832



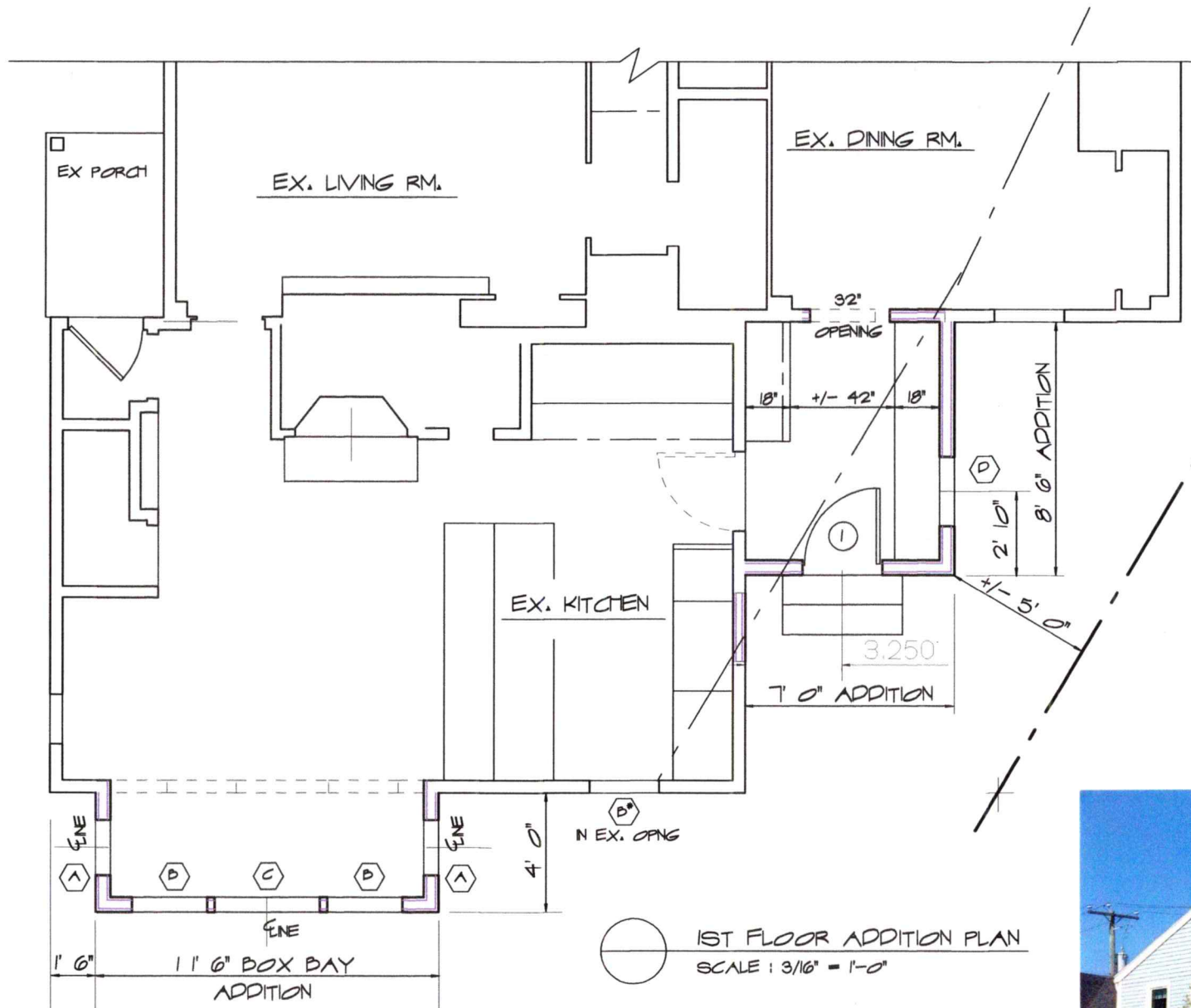
ANNE WHITNEY ARCHITECT

Project:	Date:	
# 2018	11/24/22	1 OF 3

REVISED 2/4/22



NOTICE: PROPERTY CORNERS SET: OCTOBER 22, 2012



1ST FLOOR ADDITION PLAN
SCALE: 3/16" = 1'-0"

WINDOW & EXTERIOR DOOR SCHEDULES

SYM.	UNIT	LITES	ROUGH OPENING	REMARKS	QUAN.
WINDOWS					
A	UDHG2 1624 cottage	6/1	1' 10 1/4" X 4' 8"	MARVIN INC., SIGNATURE. Clad Doublehung, 7/8" SDL w/ Low E Glazing, Cladding "Ebony" Hardware to be chosen by Owner. New 2x6 Wall	2
B	UDHG2 2424 cottage	6/1	2' 6 1/4" X 4' 8"	Ditto, 6/1 cottage	2
C	UDHPG2 4054	type 1	2' 6 1/4" X 4' 8"	Ditto, Picture Unit	1
D	UAWN 3040	6	2'7" X 3' 3 5/8"	MARVIN INC., SIGNATURE. Clad Casement, 7/8" SDL w/ Tempered Low E Glazing, Cladding "Ebony" Hardware to be chosen by Owner. New 2x6 Wall	1
EXTERIOR DOOR					
1	UFD 2868 XR	15	2' 10 7/16" x 6' 10 1/2"	MARVIN INC., SIGNATURE. Clad Inswing French Door, 7/8" SDL w/ Low E Glazing, Cladding "Ebony" Hardware to be chosen by Owner. New 2x6 Wall	1



EXISTING SIDE ENTRY

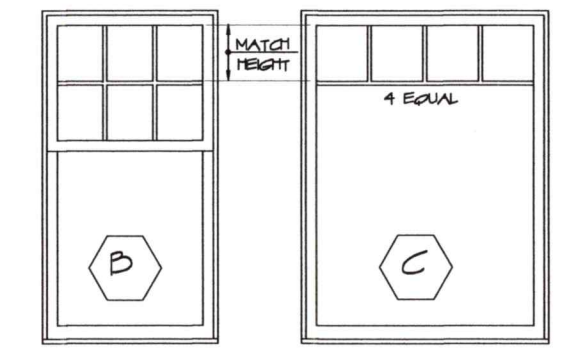


EXISTING REAR ELEVATION AT DINING



VIEW FROM MARCY STREET

TYPE I LITES



Schematic Design

9 Sheafe Street
Portsmouth
NH 03801
603-427-2832

ANNE WHITNEY ARCHITECT

ADDITIONS & RENOVATIONS, BOYD/STILES RESIDENCE
28 SOUTH STREET PORTSMOUTH, NH

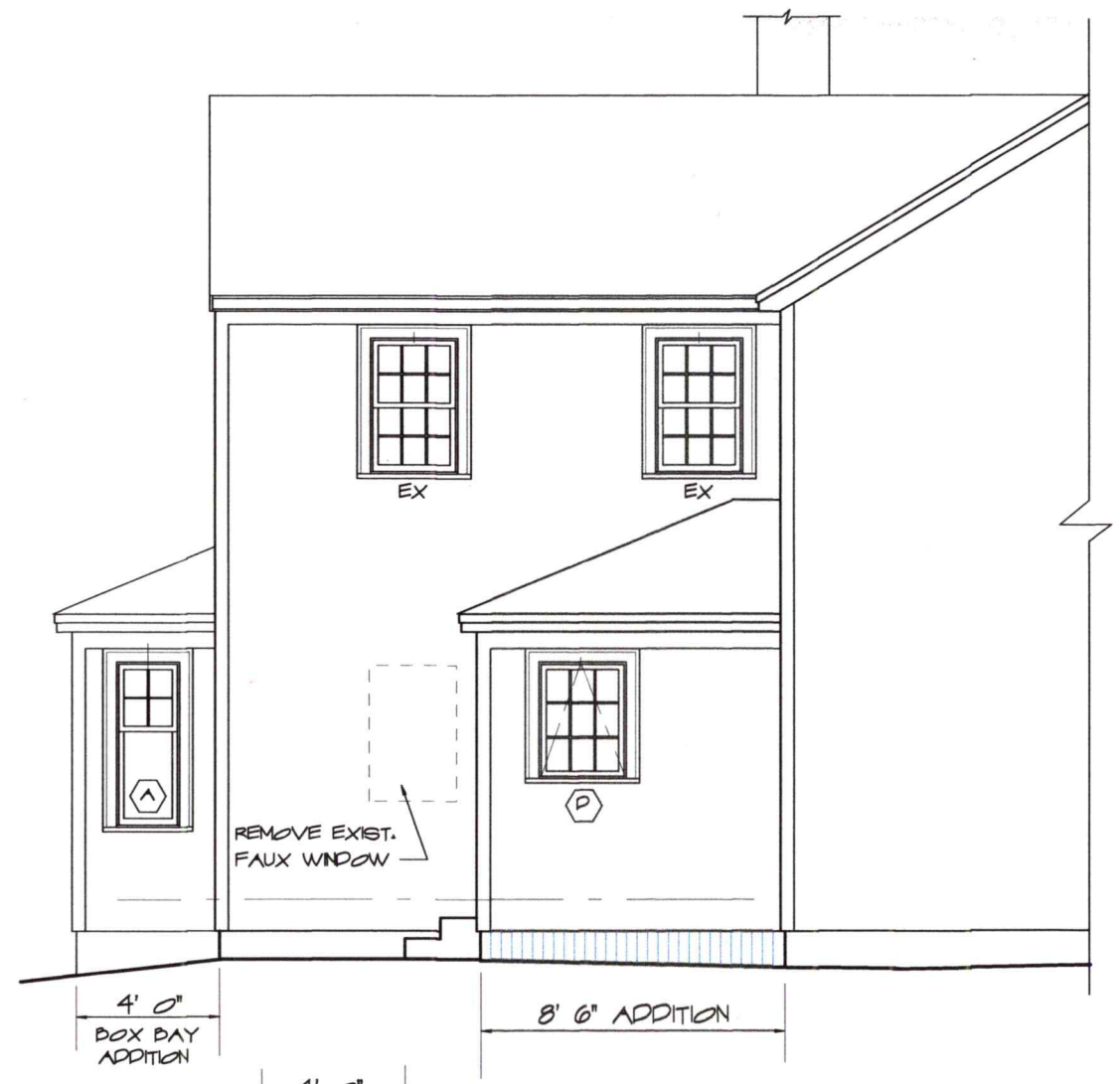
Project: 2018 Date: 2/8/22

Revisions:

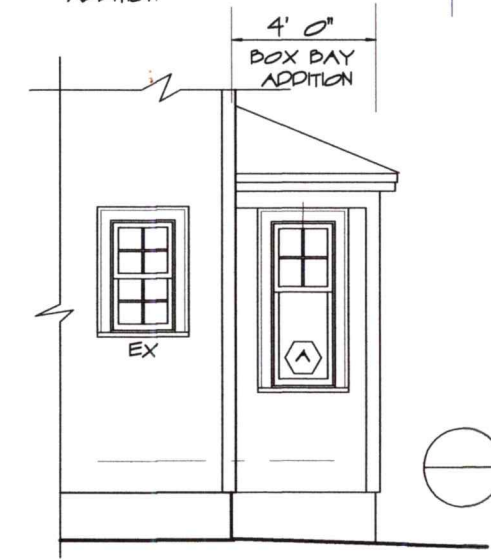
2 OF 3



REAR ELEVATION
SCALE: 3/16" = 1'-0"




LEFT SIDE ELEVATION
SCALE: 3/16" = 1'-0"



RIGHT SIDE OF BAY
SCALE: 3/16" = 1'-0"



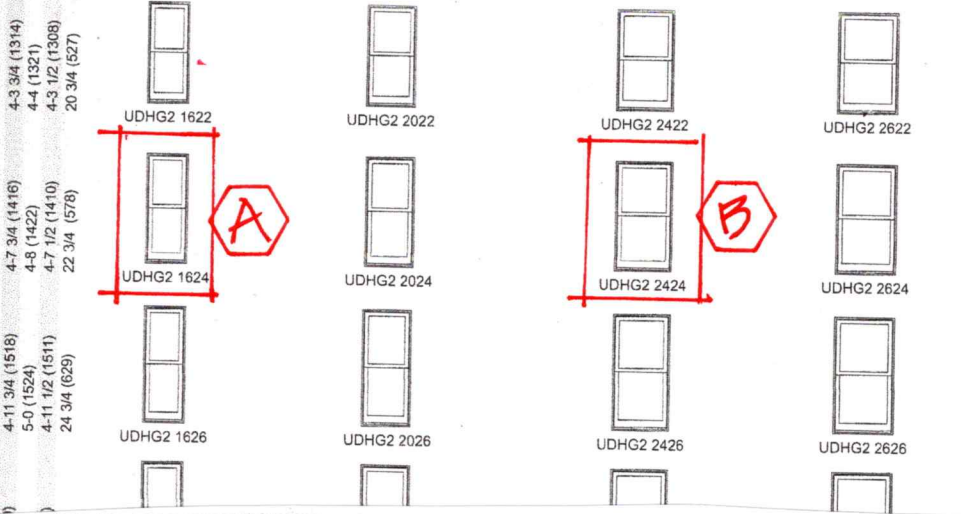
EXISTING REAR ELEVATION

SCHEMATIC DESIGN ADDITIONS & RENOVATIONS, BOYD/STILES RESIDENCE 28 SOUTH STREET PORTSMOUTH, NH	 ANNE WHITNEY ARCHITECT	Project: 2018	Date: 2/8/22
		Revisions:	3 OF 3

20 SOUTH STREET

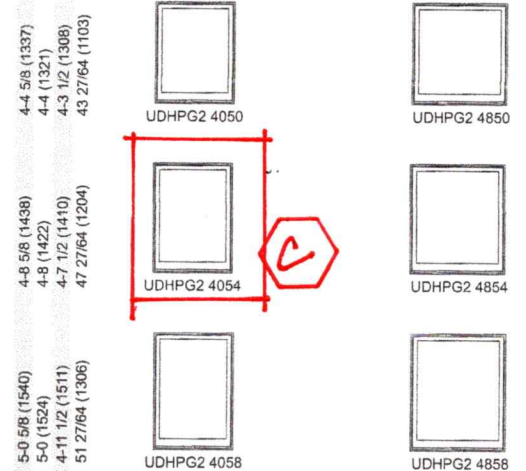
DOUBLE HUNG G2

MO (mm)	1'9 3/4 (552)	2-1 3/4 (654)	2-5 3/4 (756)	2-7 3/4 (806)
RO (mm)	1-10 1/4 (565)	2-2 1/4 (667)	2-6 1/4 (768)	2-8 1/4 (819)
FS (mm)	1-9 1/4 (540)	2-1 1/4 (641)	2-5 1/4 (743)	2-7 1/4 (794)
DLO (mm)	14 47/64 (347)	18 47/64 (476)	22 47/64 (577)	24 47/64 (628)



DOUBLE HUNG PICTURE G2

MO (mm)	3-5 3/4 (1060)	4-1 3/4 (1264)
RO (mm)	3-6 1/4 (1073)	4-2 1/4 (1276)
FS (mm)	3-5 1/4 (1048)	4-1 1/4 (1251)
DLO (mm)	24 17/64 (889)	42 47/64 (1085)



MARVIN SIGNATURE™ COLLECTION | ULTIMATE

AWNING / AWNING PUSH OUT

MO (mm)	1 - 4 1/2 (419)	1 - 6 1/2 (469)	1 - 8 1/2 (520)	2 - 1/2 (622)	2 - 2 1/2 (673)	2 - 4 1/2 (723)	2 - 6 1/2 (774)	2 - 8 1/2 (825)
RO (mm)	1 - 5 (431)	1 - 7 (482)	1 - 9 (533)	2 - 1 (635)	2 - 3 (688)	2 - 5 (736)	2 - 7 (787)	2 - 9 (838)
FS (mm)	1 - 4 (406)	1 - 6 (457)	1 - 8 (508)	2 - 0 (609)	2 - 2 (660)	2 - 4 (711)	2 - 6 (762)	2 - 8 (812)
DLO (mm)	0 - 10 13/64 (259)	1 - 0 13/64 (310)	1 - 2 13/64 (361)	1 - 6 13/64 (462)	1 - 8 13/64 (513)	1 - 10 13/64 (564)	2 - 0 13/64 (615)	2 - 2 13/64 (666)



MARVIN SIGNATURE™ COLLECTION | ULTIMATE

1 3/4" INSWING / OUTSWING FRENCH DOOR

6-8 HEIGHT (7-0, 8-0 AND 9-0 HEIGHTS SEE BELOW)

Clad MO (mm)	1-8 11/32 (517)	2-1 15/16 (659)	2-7 15/16 (811)	2-9 15/16 (862)	3-1 15/16 (946)
Wood MO (mm)	1-10 31/32 (583)	2-4 9/16 (726)	2-10 9/16 (878)	3-0 9/16 (929)	3-4 9/16 (1030)
RO (mm)	1-8 27/32 (529)	2-2 7/16 (672)	2-8 7/16 (824)	2-10 7/16 (875)	3-2 7/16 (976)
FS (mm)	1-7 27/32 (504)	2-1 7/16 (646)	2-7 7/16 (799)	2-9 7/16 (849)	3-1 7/16 (951)
DLO (mm)	0-11 1/2 (292)	11-1 19/32 (345)	1-7 19/32 (498)	1-9 19/32 (548)	2-1 19/32 (650)

