

DRAWING INDEX

- H.01 COVER
- H.10 SITE PLAN
- H.11 CONTEXT PLAN
- H.12 FLOOR PLANS
- H.20 STREET SECTIONS
- H.21 ELEVATION - FRONT
- H.22 - ELEVATION - WEST SIDE
- H.23 ELEVATION - SOUTH SIDE
- H.24 ELEVATION - EAST SIDE
- H.31- 35 VIGNETTES
- H.51 BIRDSEYE PERPECTIVE - NW
- H.52 BIRDSEYE PERSPECTIVE - SE
- H6.1 MATERIALS

Zoning & Code Review

GRB General Residence B
Flood Plain overlay

Portsmouth Zoning
dimensional standards
10.521

	GRB
Minimum Lot Dimensions	
Lot area	5,000 sf
Lot area per dwelling unit	5,000 sf
Continuous street frontage	80'
Depth	60'
Minimum Yard Dimensions	
front	5'
side	10'
rear	25'
Maximum Structure Dimensions	
sloped roof	35'
flat roof	30'
Roof appurtenance height	8'
Building coverage	30%
Minimum open space	25%

Revisions since last work session

1. Reduced width and height of front gable.
2. Decreased size of round window and thickened its casing trim.
3. Reduced and revised solar array layout, change to shallow in-line profile behind main roof ridges, pulled back away from roof edges.
4. Further material details - standing seam shingle roof and staight-edged wood shingles
5. Exterior Materials selections

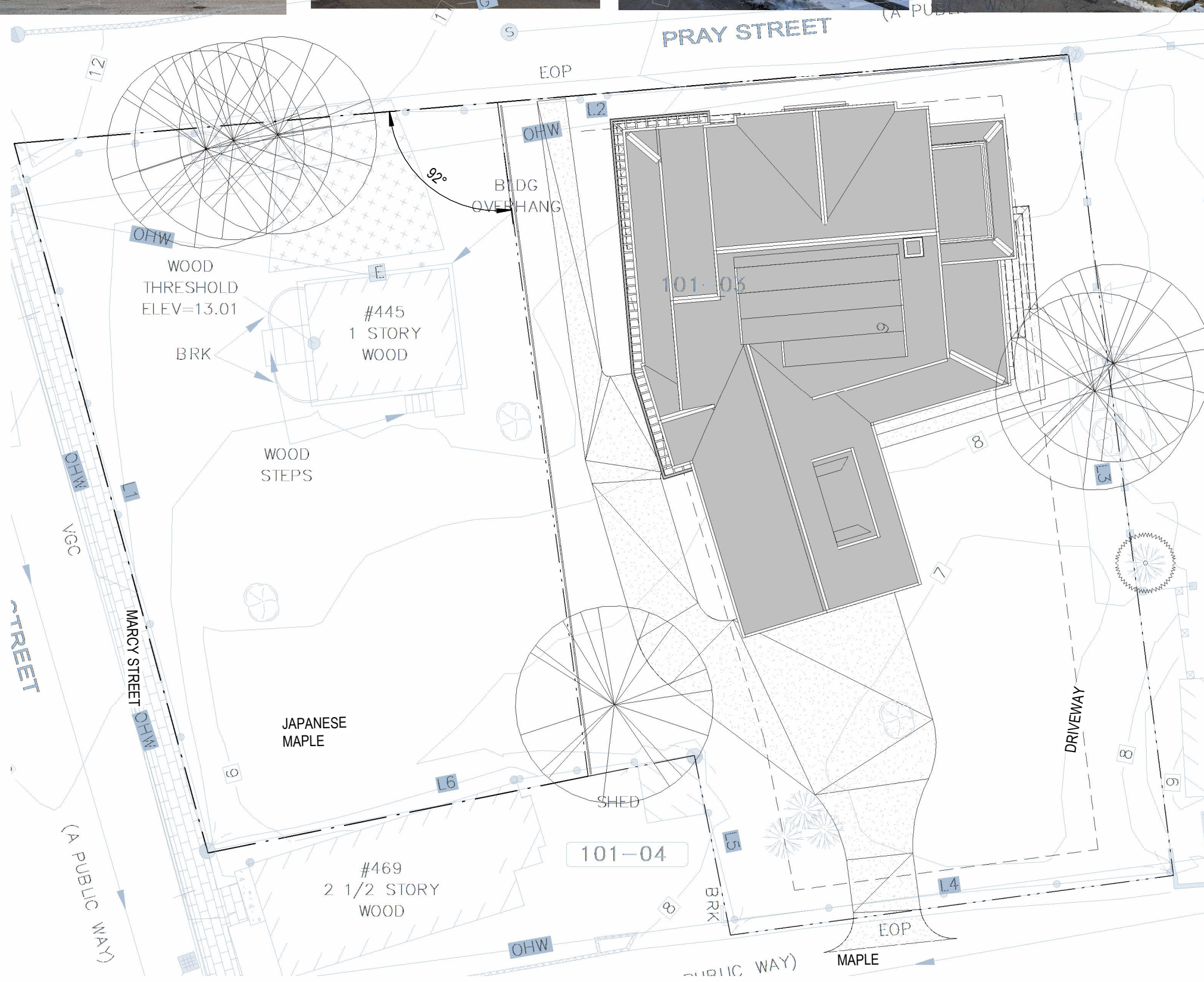
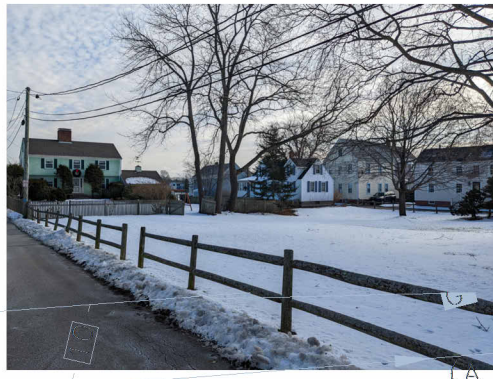
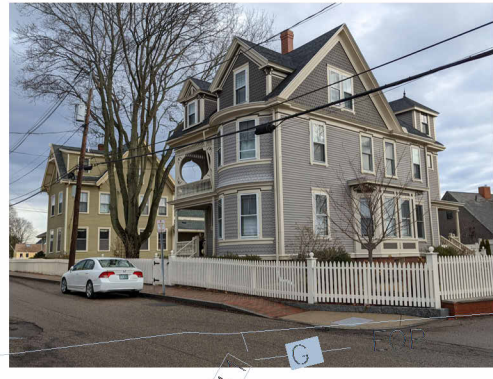


445 MARCY STREET NEW RESIDENCE

**HISTORIC DISTRICT COMMISSION
WORK SESSION 4**

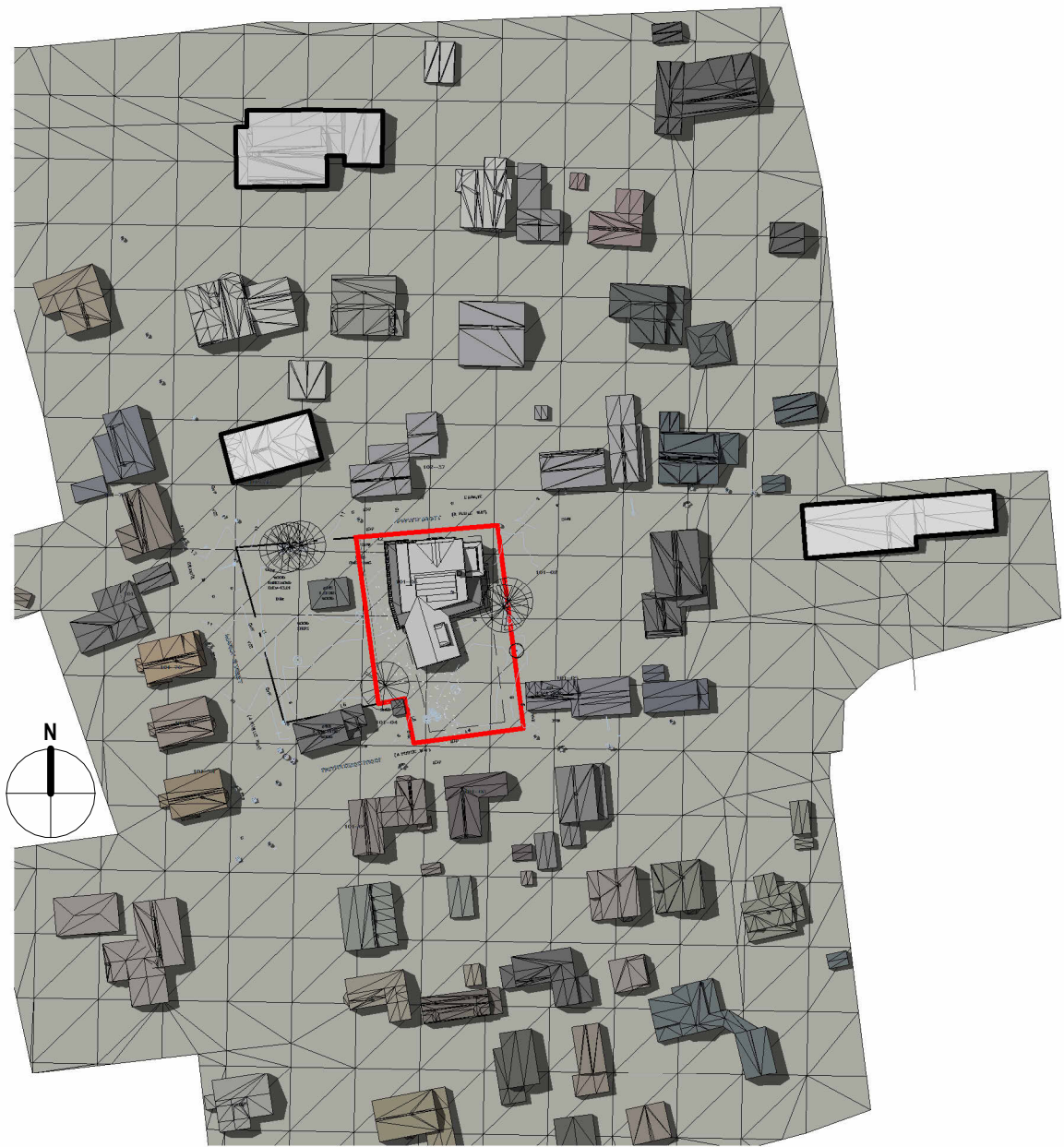
MAY 22, 2022



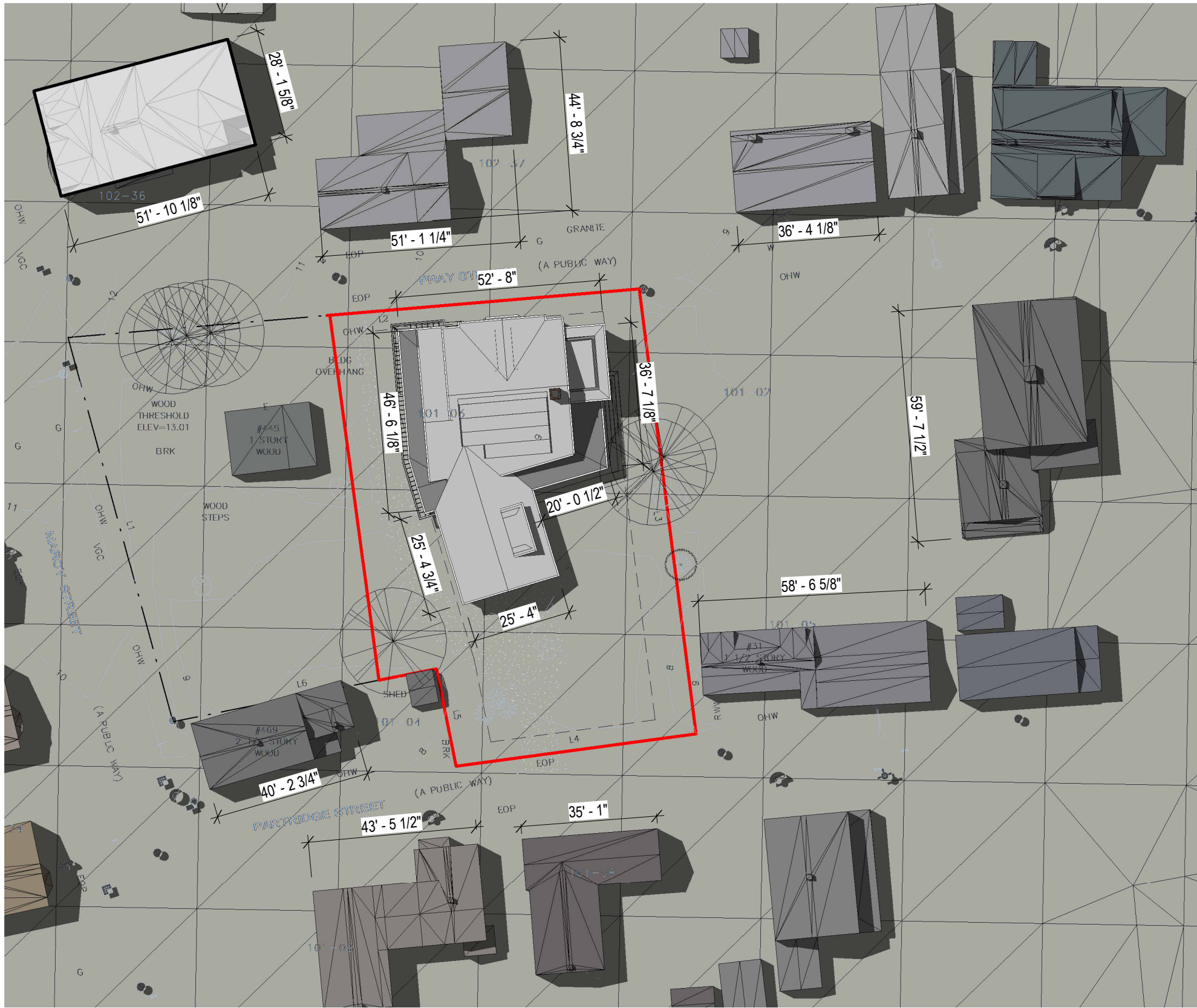


H.10 **SITE PLAN**
445 MARCY ST
 SCALE: 1/16" = 1'-0"
 5/22/2022



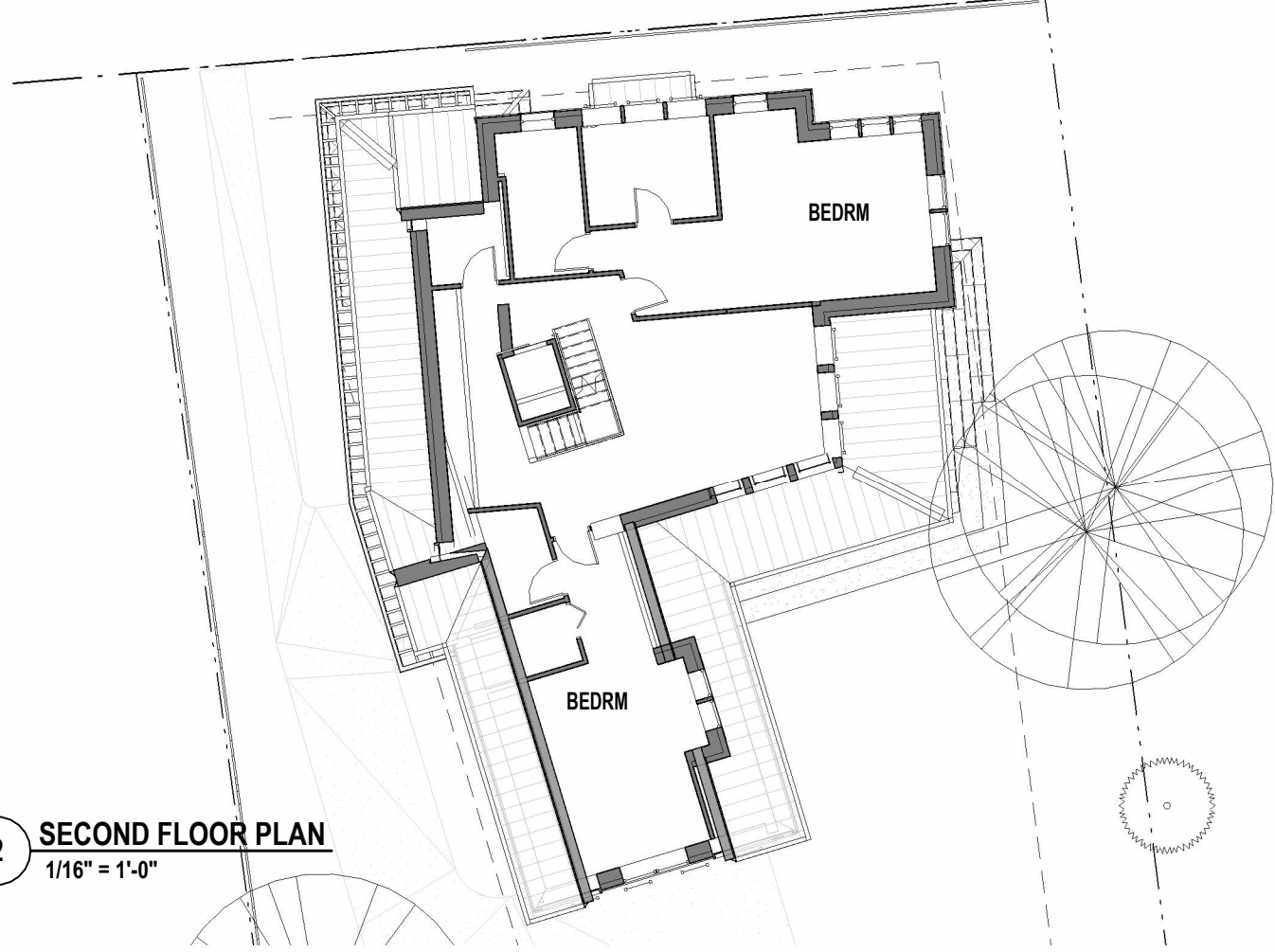


1 LEVEL 1 CONTEXT hdc4
1" = 100'-0"

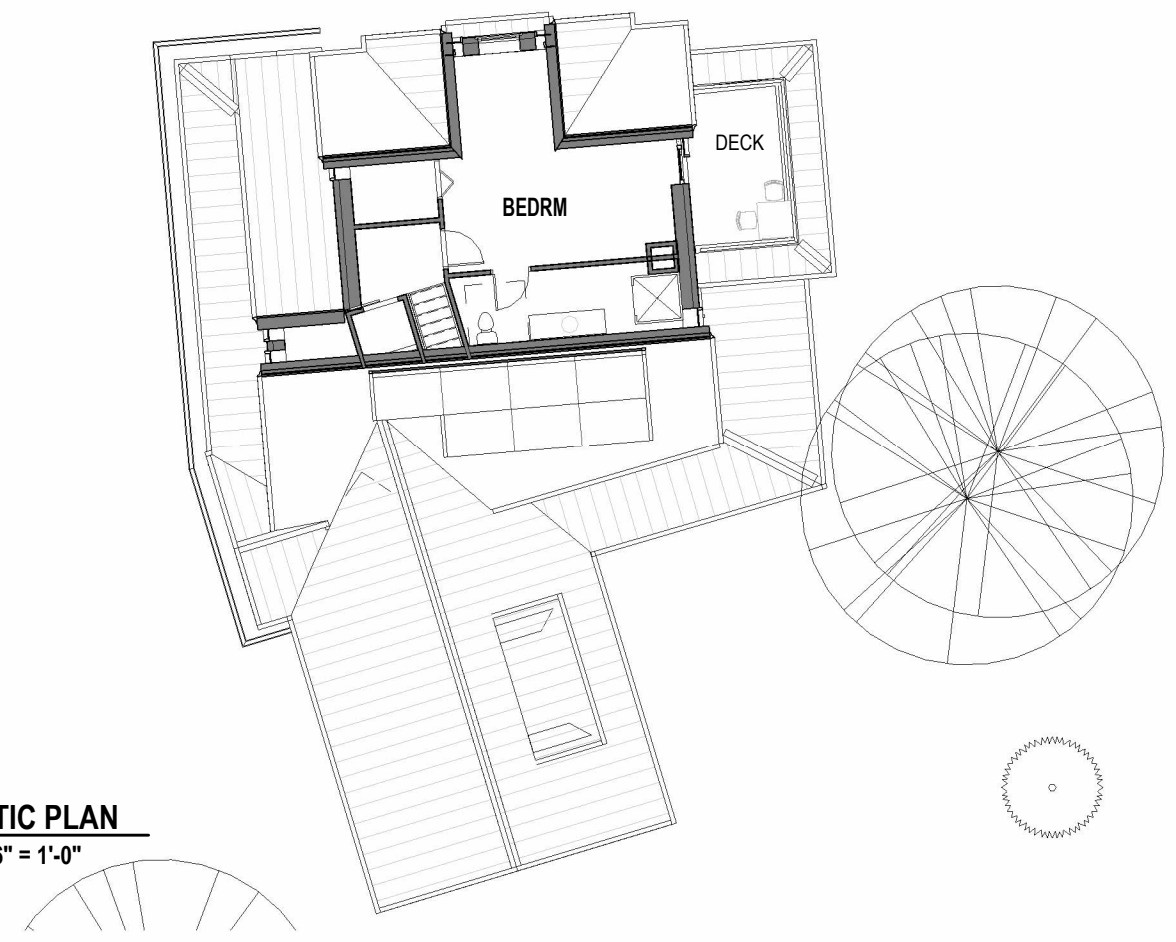


2 LEVEL 1 CONTEXT hdc4 DETAIL
1" = 30'-0"

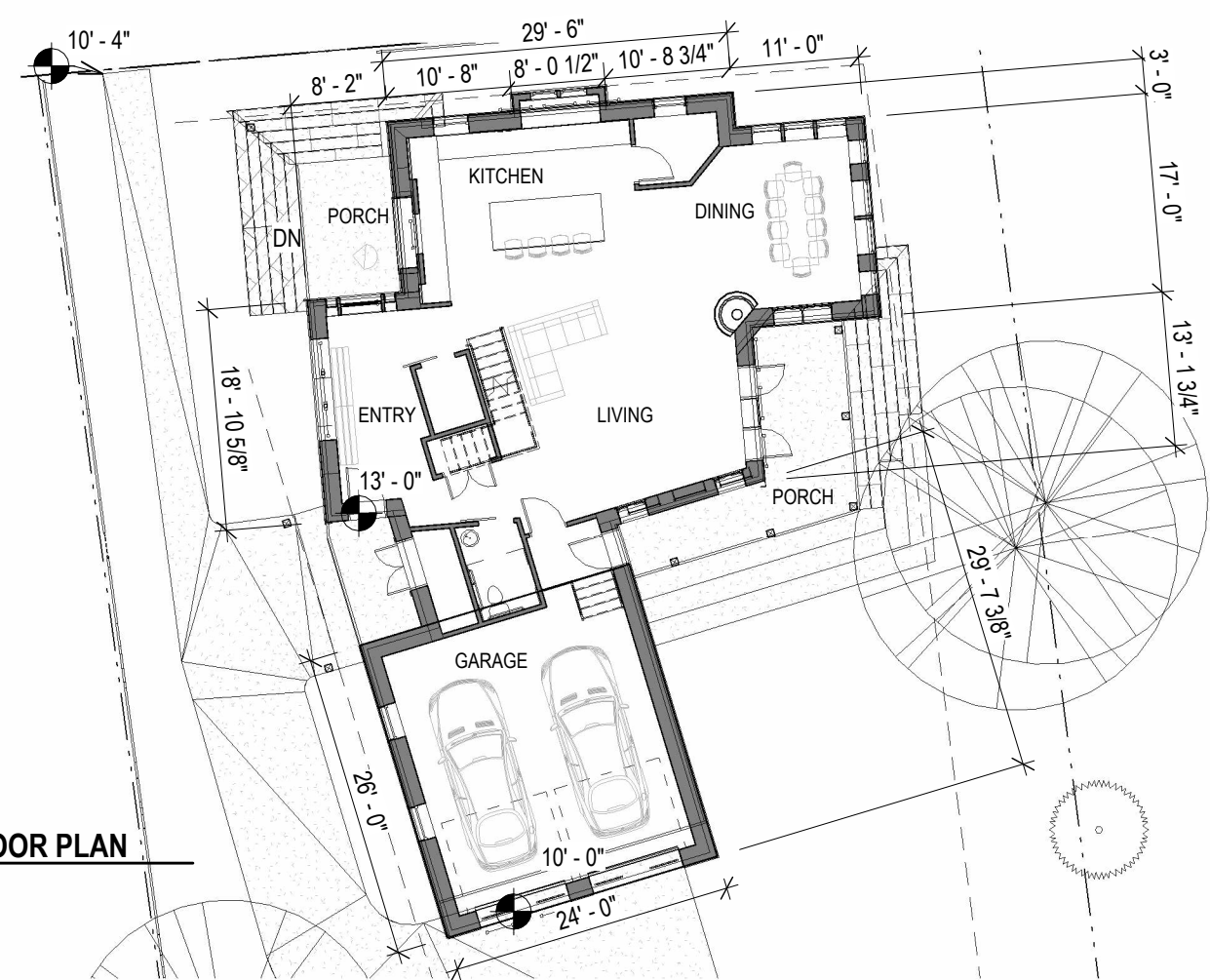
2 SECOND FLOOR PLAN
1/16" = 1'-0"

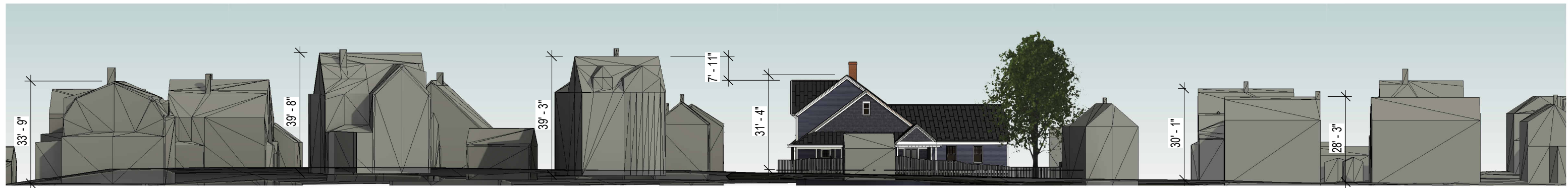


3 ATTIC PLAN
1/16" = 1'-0"



1 FIRST FLOOR PLAN
1/16" = 1'-0"

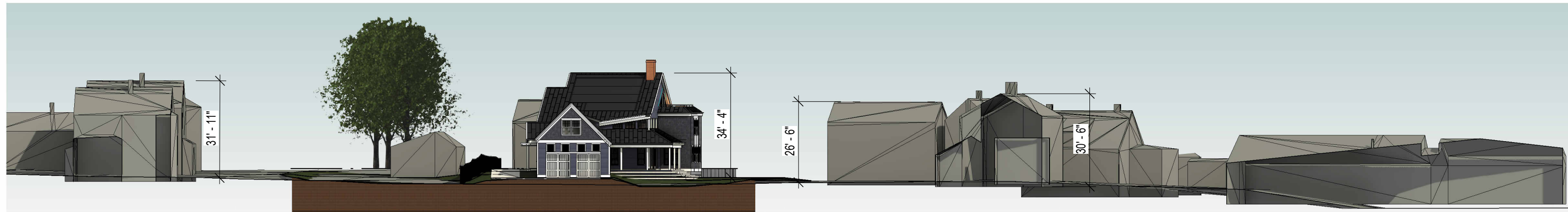




1 WEST ELEVATION - MARCY STREET
1/32" = 1'-0"



2 NORTH ELEVATION - PRAY STREET
1/32" = 1'-0"



3 SOUTH ELEVATION - PARTRIDGE STREET
1/32" = 1'-0"



4 EAST ELEVATION - WATER SIDE
1/32" = 1'-0"

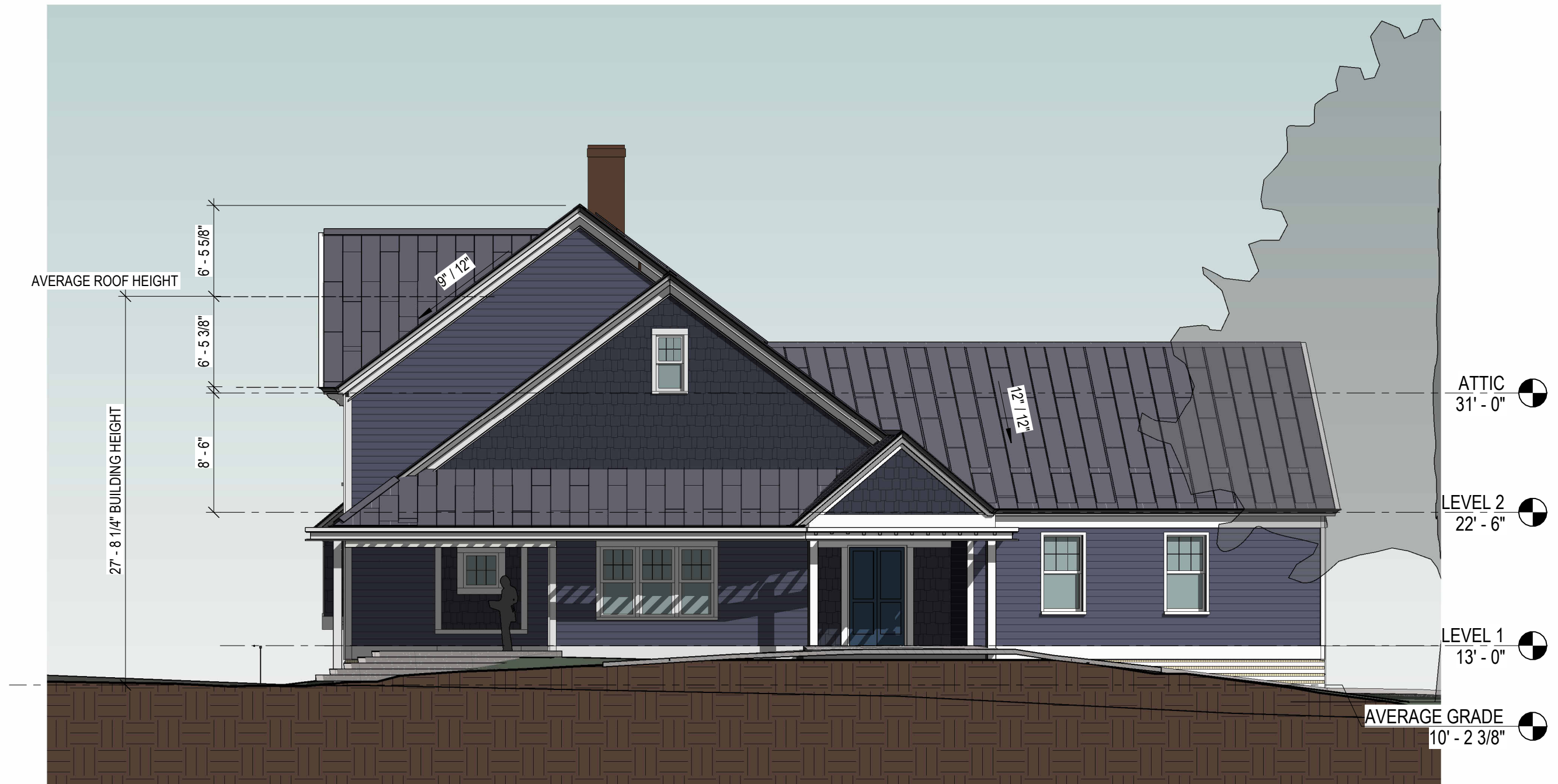
H.20 STREET SECTIONS
445 MARCY ST
SCALE: 1/32" = 1'-0"
5/22/2022





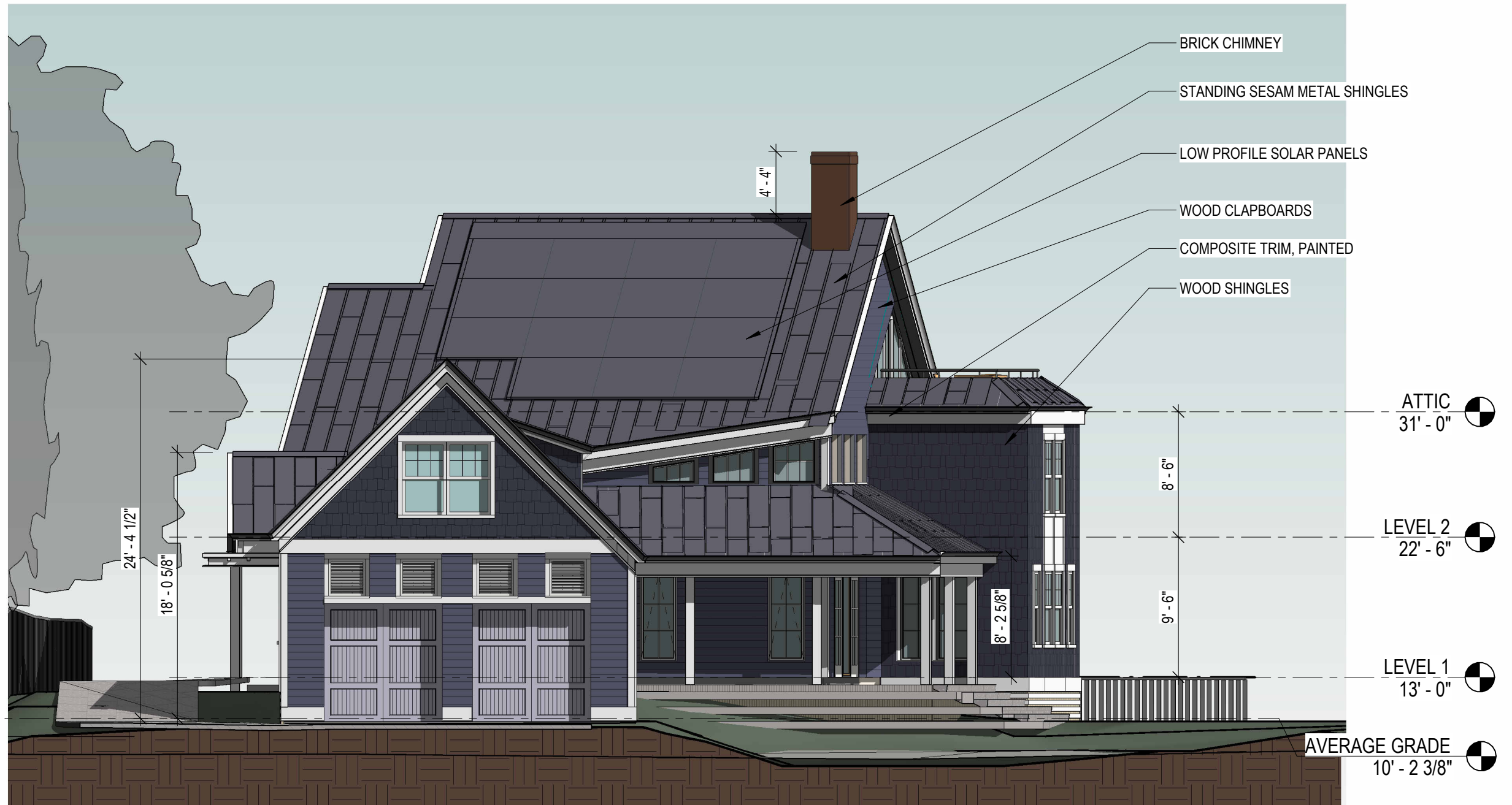
H.21 **ELEVATION - FRONT (NORTH)**
445 MARCY ST
 SCALE: 1/8" = 1'-0"
 5/22/2022





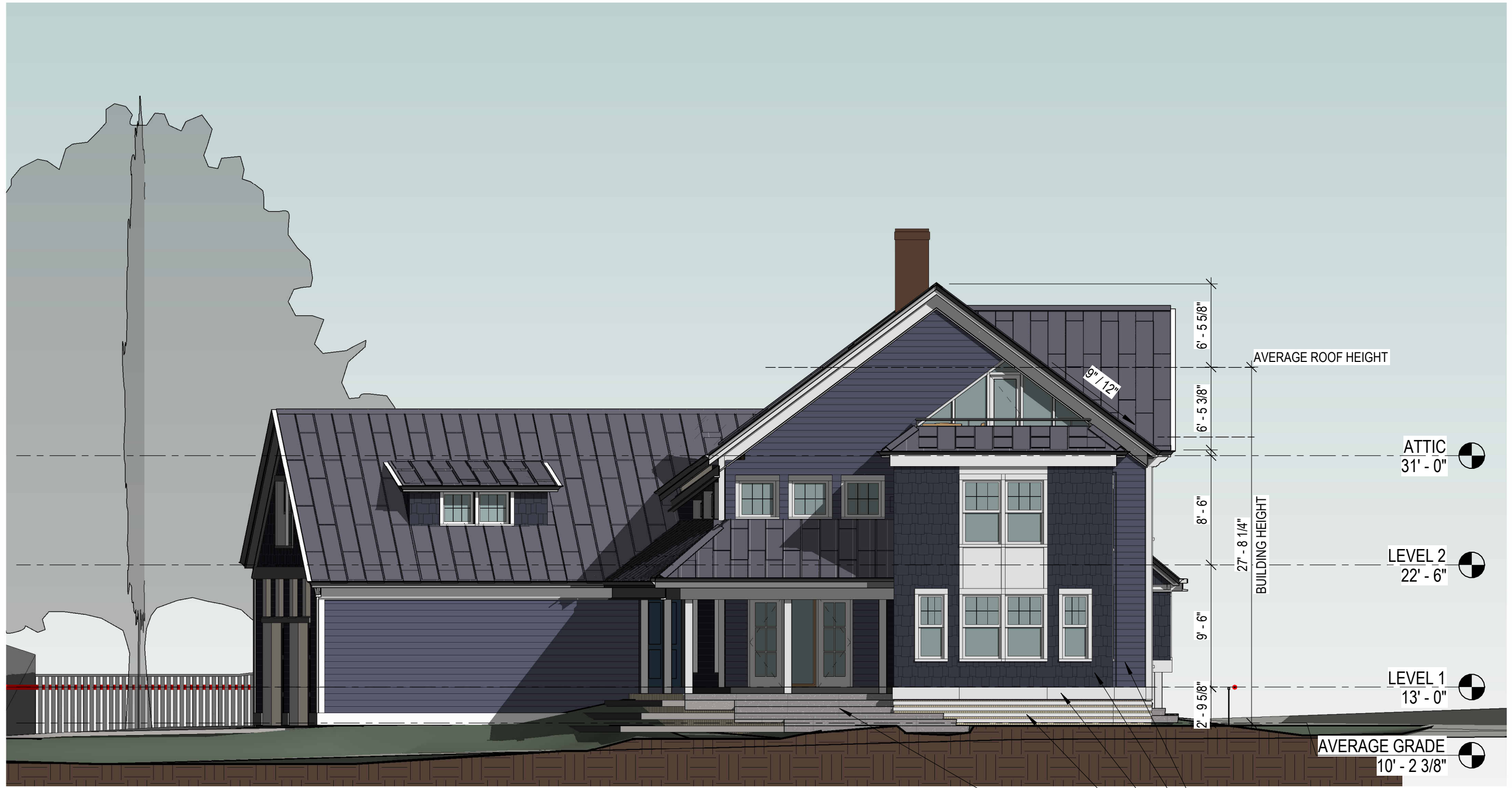
H.22 **ELEVATION - WEST SIDE**
445 MARCY ST
 SCALE: 1/8" = 1'-0"
 5/22/2022





H.23 **ELEVATION - REAR (SOUTH)**
445 MARCY ST
 SCALE: 1/8" = 1'-0"
 5/22/2022





6' - 5 5/8"
 6' - 5 3/8"
 8' - 6"
 9' - 6"
 2' - 9 5/8"
 27' - 8 1/4"
 AVERAGE ROOF HEIGHT
 ATTIC 31' - 0"
 LEVEL 2 22' - 6"
 LEVEL 1 13' - 0"
 AVERAGE GRADE 10' - 2 3/8"
 BUILDING HEIGHT

- WD CLAPBOARDS
- WD SHINGLES
- COMPOSITE TRIM
- COMPOSITE SKIRTING
- GRANITE STEPS

H.24 ELEVATION - EAST SIDE
445 MARCY ST

SCALE: 1/8" = 1'-0"
 5/22/2022





H.31 **VIGNETTE - FROM PRAY ST W**
445 MARCY ST
SCALE:
5/22/2022





H.32

**VIGNETTE - FROM PRAY ST E
445 MARCY ST**

SCALE:
5/22/2022





H.33

**VIGNETTE - FROM PARTRIDGE ST
445 MARCY ST**

SCALE:
5/22/2022



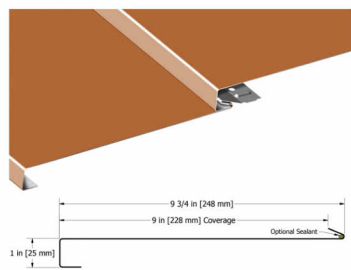


H.34

VIGNETTE - FROM MARCY ST
445 MARCY ST

SCALE:
5/22/2022





RUMBA SHAKE™

SKU: HBS090

MATERIAL

.032, .040 aluminum
24, 22 ga. metallic coated steel
16 oz. copper*
.8 mm zinc*

SHINGLE SPECS

Coverage: 9"
Length: 12'-0", 20'-0"

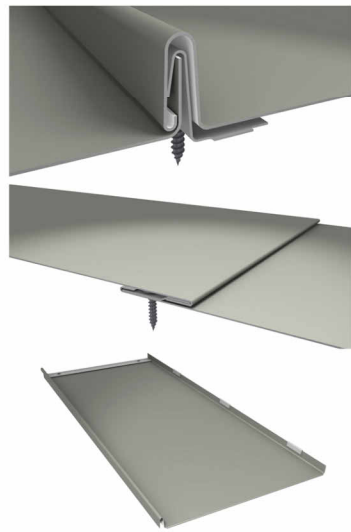
TEXTURE
Smooth, Stucco Embossed, or Wood Grain Embossed (24 ga. metallic coated steel, .032 aluminum & .040 aluminum only)

ANODIZED
Clear Satin, Dark Bronze

FASTENERS
Concealed fasteners and clips

MINIMUM SLOPE
4:12

www.atas.com/rumbashake



STANDING SEAM SHINGLE™

SKU: HSS164 (36"), HSS165 (60")

MATERIAL

.032 aluminum
16 oz. copper*

SHINGLE SPECS

Coverage: 16" x 36" or 60"
Seam Height: 1"

TEXTURE

Smooth

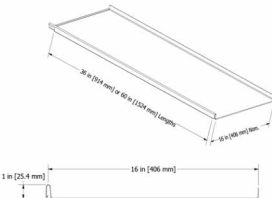
FASTENERS

Concealed fasteners and clips

MINIMUM SLOPE

4:12

www.atas.com/standingseamshingle



52 METAL ROOF PANELS | MODULAR

A leading manufacturer of sustainable building envelope technology, ATAS utilizes cool pigment paint on many color offerings. Our products reflect infrared radiation, which results in cooler surface temperatures, and maximum fade resistance.

Many of the ATAS products meet the qualifications for potential green building certification credits and industry ratings. See ATAS website for specific SRI values (www.atas.com/sri). Information on ATAS' sustainable products can be found at www.atas.com/sustainability.

70% PVDF finish carries a limited warranty against fading and chalking. ATAS coated materials are non-staining and virtually maintenance free. Any surface residue is easily removed with conventional cleaning solutions or detergents.



STOCK COLORS

70% PVDF resin based coatings provide high-performance durability for exterior and interior applications. These coatings are designed to resist fading, chalking, and abrasion. Meets the requirement of AAMA 2605-13 for aluminum substrates.



www.atas.com/colors



TECH DATA



Description

The sleek, black, low-profile design of the GAF DecoTech™ Solar System delivers performance and curb appeal at an affordable price.

Product Installation

Refer to the DecoTech™ Application Instructions for details on how to install the DecoTech™ Solar System.

Design Considerations

- DecoTech™ Module Assembly must be installed in landscape mode.
- The roof deck must be a minimum of 15/32" thick plywood or 7/16" thick OSB decking.
- DecoTech™ Module Assemblies are intended for use solely on roofs having a slope between 4:12 and 12:12.
- DC optimizers or AC inverters can be used.
- Asphalt shingle installations only.



Technical Specifications

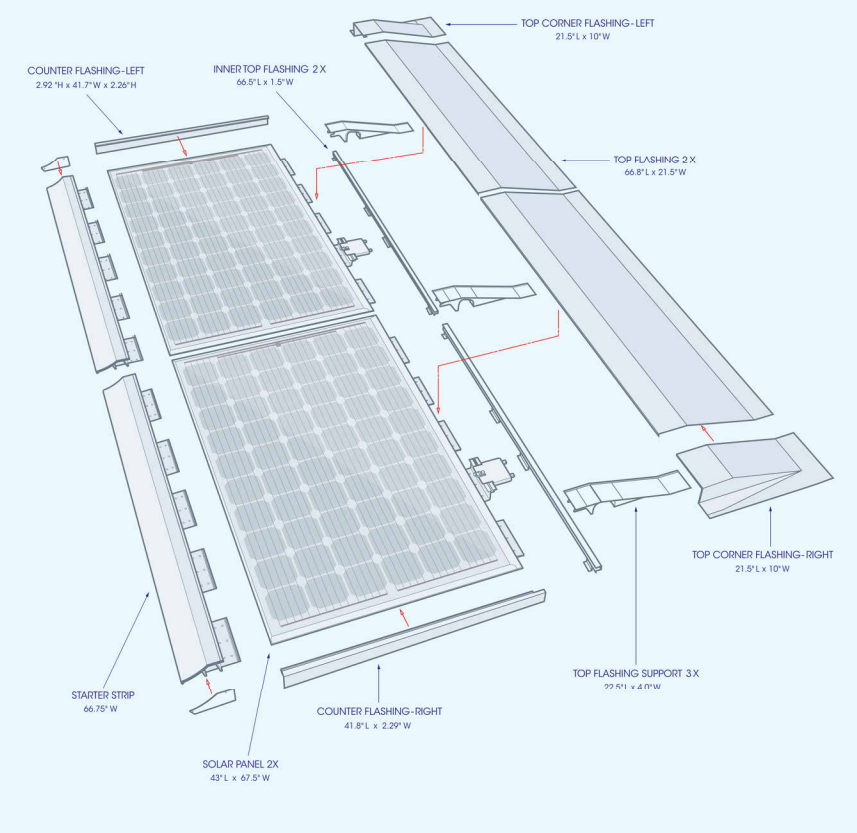
Model Number	RI 2000	Cells per module	60
PV Laminate	Silfab SLA Mono	Cell type	Monocrystalline
Maximum Power under STC* (P _{max})	310 Wp	PV Connector Type	PV wire with MC4 compatible
Open Circuit Voltage under STC (V _{oc})	40.25 V	PV Laminate Front	3.2 mm high transmittance, tempered, ar coating
Maximum Power Point Voltage under STC (V _{mpp})	33.05 V	PV Laminate Back	Multi-layer Polymer Backsheet
Short Circuit Current under STC (I _{sc})	9.93 A	Frame	Black Powder Coated Aluminum
Maximum Power Point Current under STC (I _{mpp})	9.38 A	Weight	44.4 lb. (20.14 kg)
Module Efficiency under STC (η _m)	19.0%	Operating Temperatures	-40 to +185°F (-40 to +85°C)
Temperature Correction Factor TC Voc	-0.30%/C	Design Loading	50 lb./ft ² (244 kg/m ²) Positive Design Load
		Certifications	SLA-M300/M310 UL 1703
		Fire Rating	DecoTech™ Frame: UL 2703



*STC: Standard Test Conditions 1000W/m², 25°C, AM 1.5. For additional parameters and certifications, refer to the latest version of the DecoTech™ Application Instructions



Dimensions



©2018 GAF 3/18 • #837 • SM037

gaf.com/solar • 1-800-ROOF-411

H.61

MATERIALS

445 MARCY ST

SCALE:
5/22/2022

