



LETTER OF AGENDA

We respectfully submit this Application for Approval for the project located at 140 Court Street:

- Install new canopies over existing entries.
- Previously approved materials from the 160 Court Street project are being used to construct the new canopies to instill design constituency across the Portsmouth Housing Authority properties.

Please refer to the attached drawings for information on this proposed approval for the Feaster Apartments.

Thank you for your consideration.
Sincerely,

Carla Goodknight, AIA, NCARB
Principal, CJ Architects

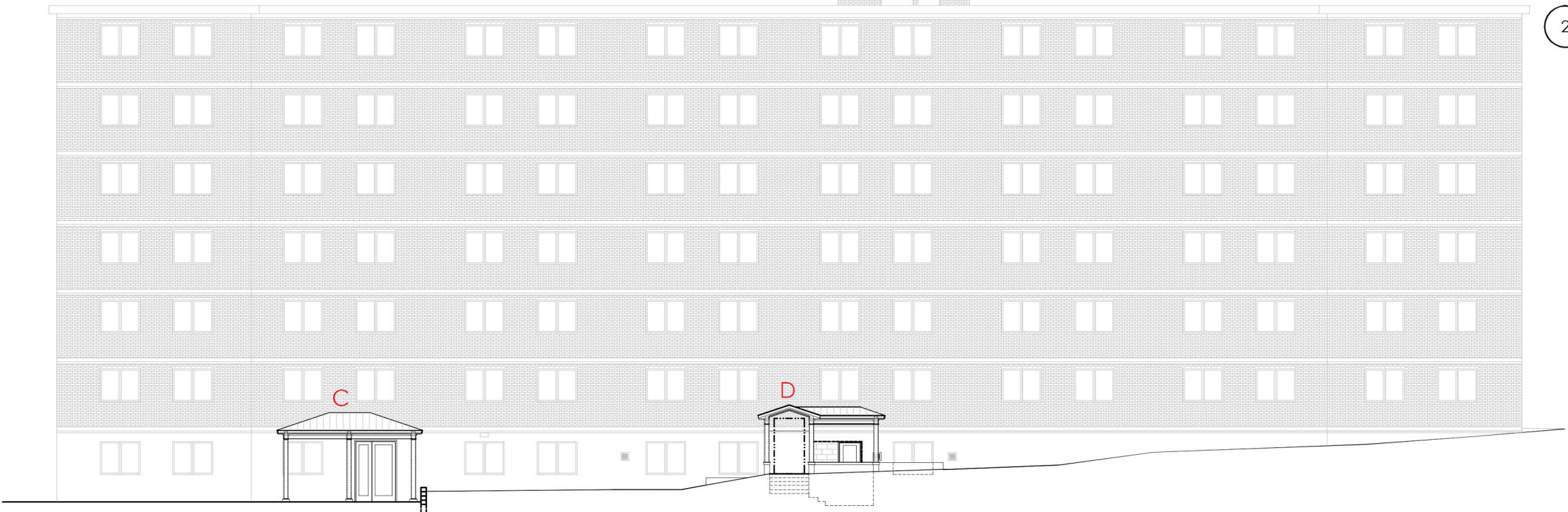




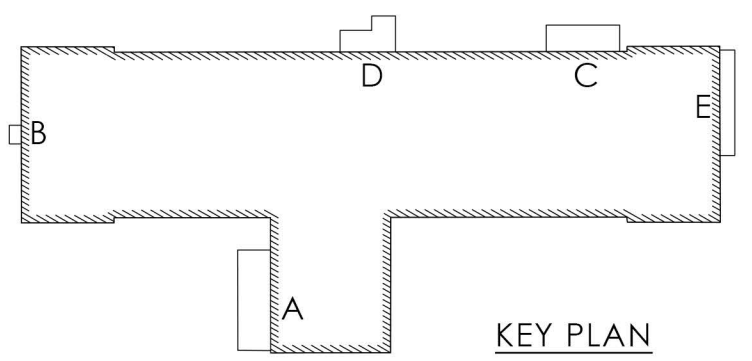
1 NORTH ELEVATION - PROPOSED
1/16" = 1'-0"



2 SOUTH ELEVATION - PROPOSED
1/16" = 1'-0"



3 EAST ELEVATION - PROPOSED
1/16" = 1'-0"



KEY PLAN

FEASTER APARTMENTS
PORTSMOUTH, NEW HAMPSHIRE

PROPOSED ELEVATIONS

HISTORIC DISTRICT COMMISSION APPLICATION FOR APPROVAL: JUNE 1, 2022



PORTSMOUTH
HOUSING



2.0



A. PROPOSED CANOPY AT NORTH ELEVATION



B. PROPOSED CANOPY AT NORTH ELEVATION



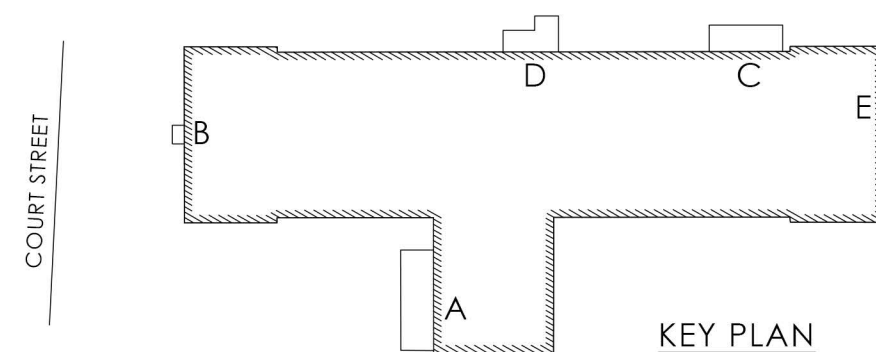
C. PROPOSED CANOPY AT EAST ELEVATION

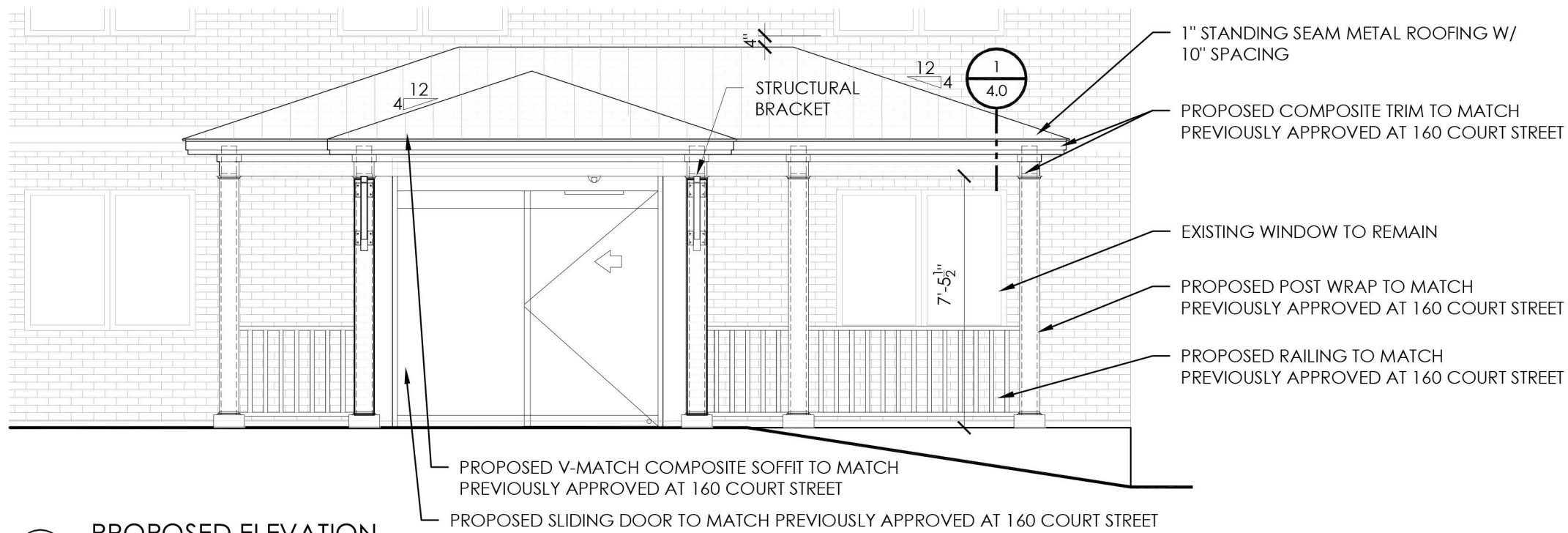


D. PROPOSED CANOPY AT EAST ELEVATION



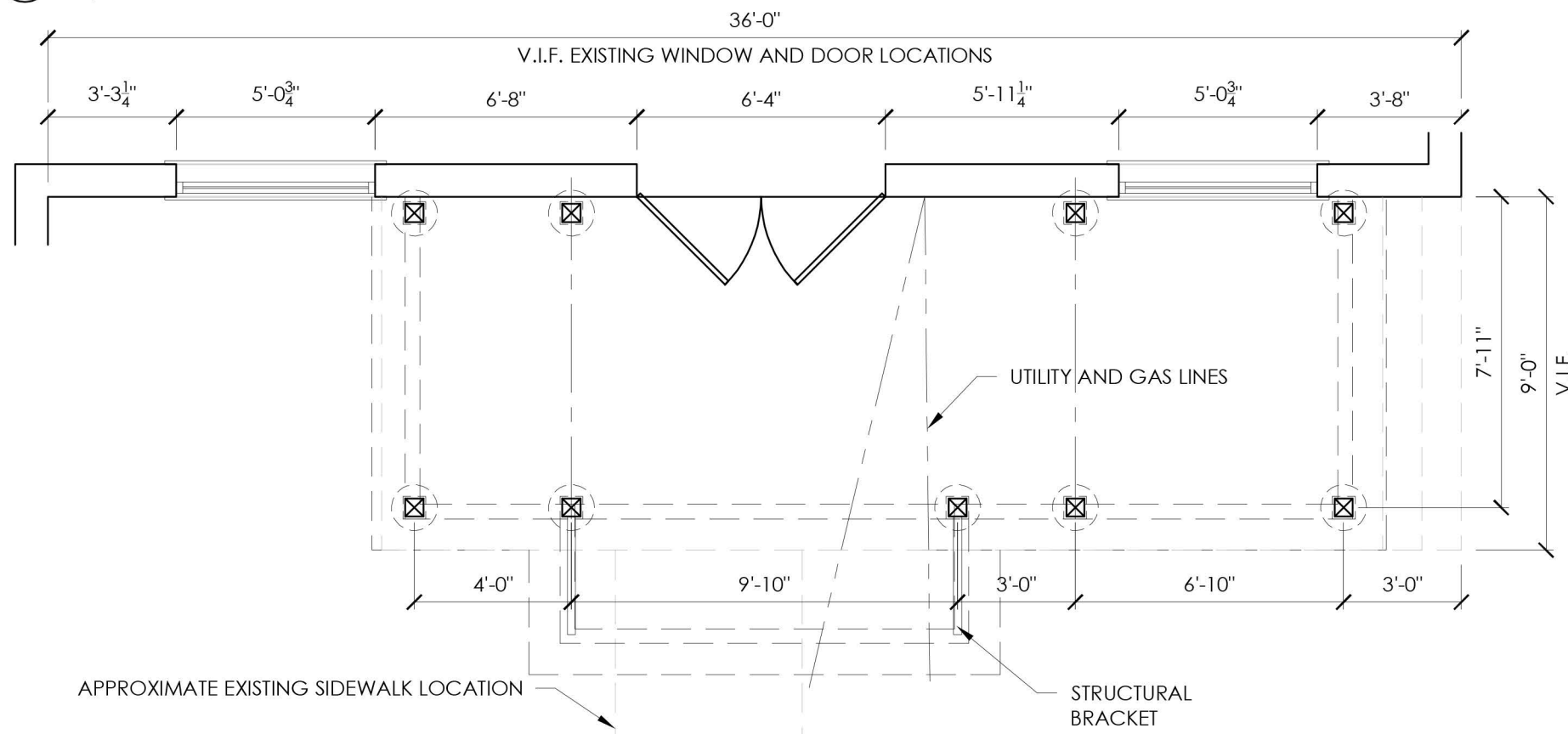
E. PROPOSED CANOPY AT SOUTH ELEVATION



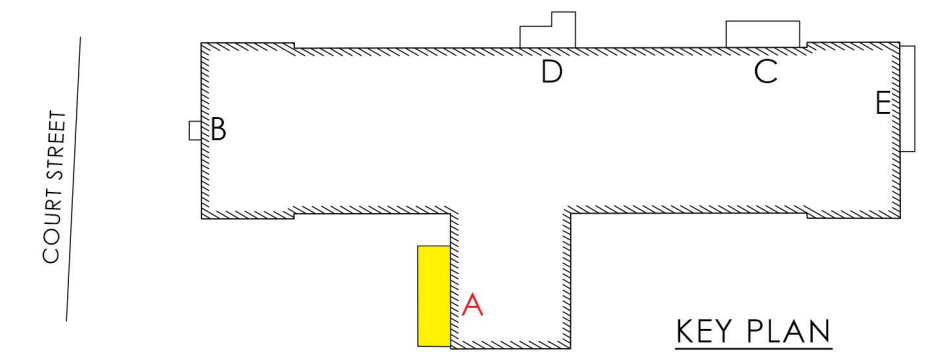


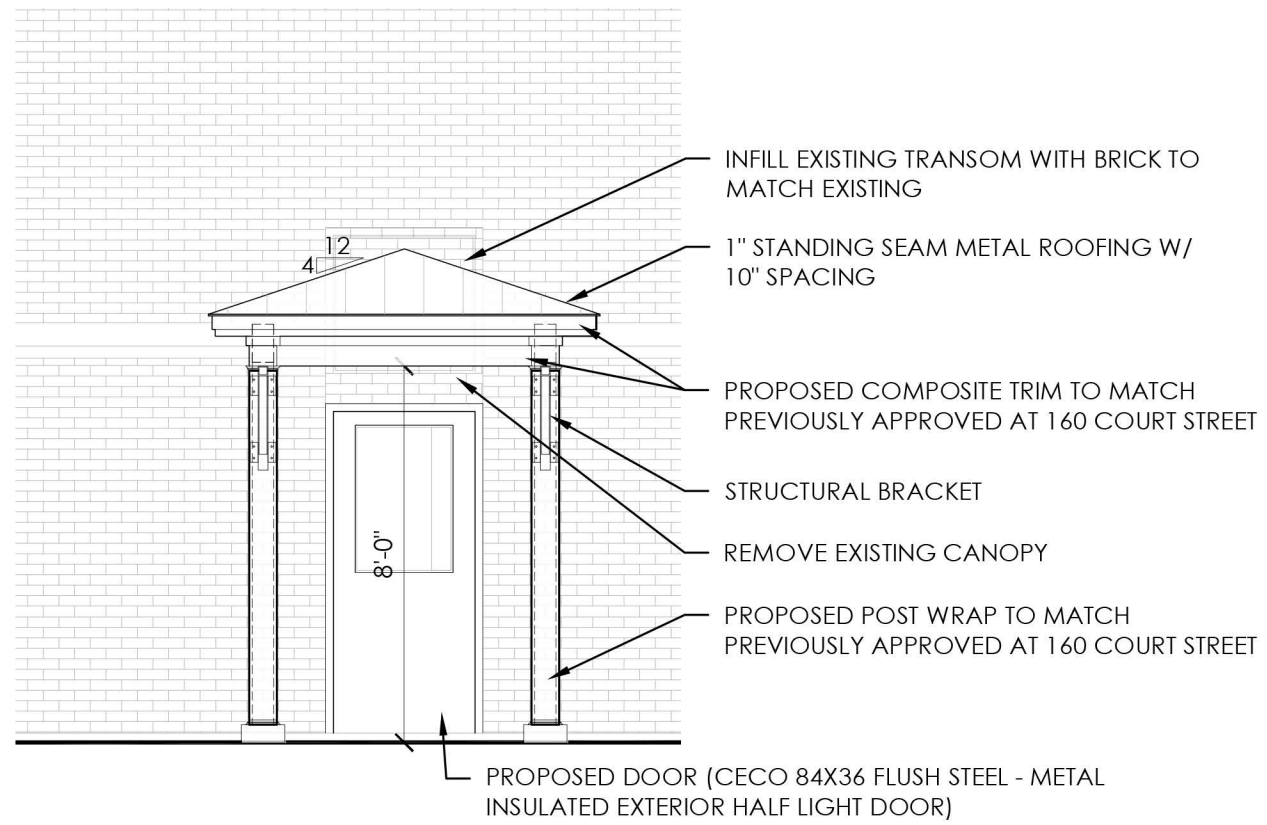
PROPOSED 3D VIEW

1 PROPOSED ELEVATION
1/4" = 1'-0"



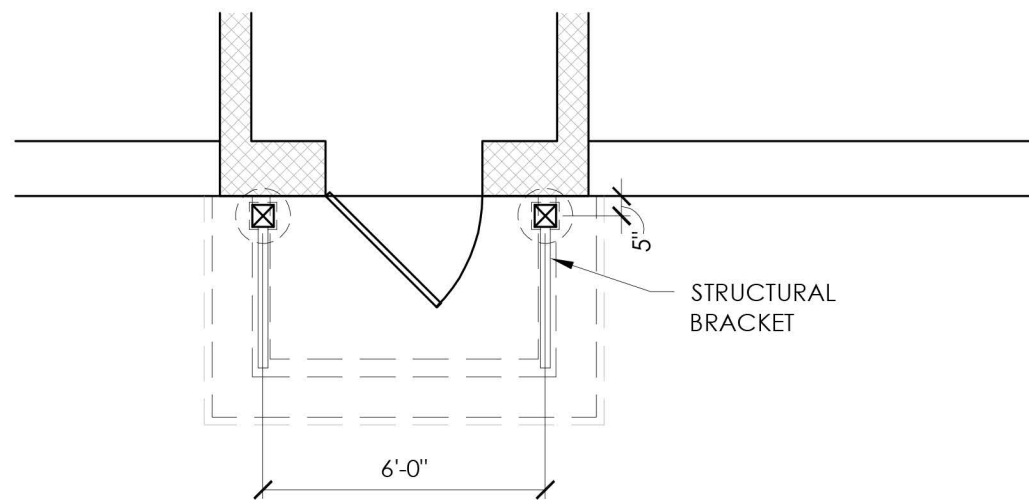
2 PROPOSED PLAN
1/4" = 1'-0"



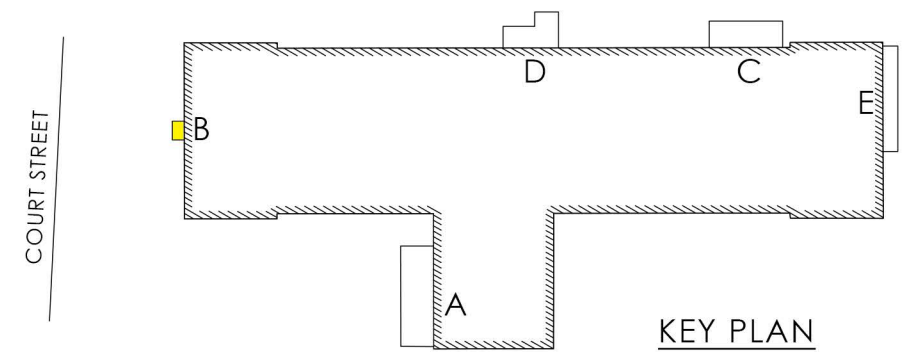


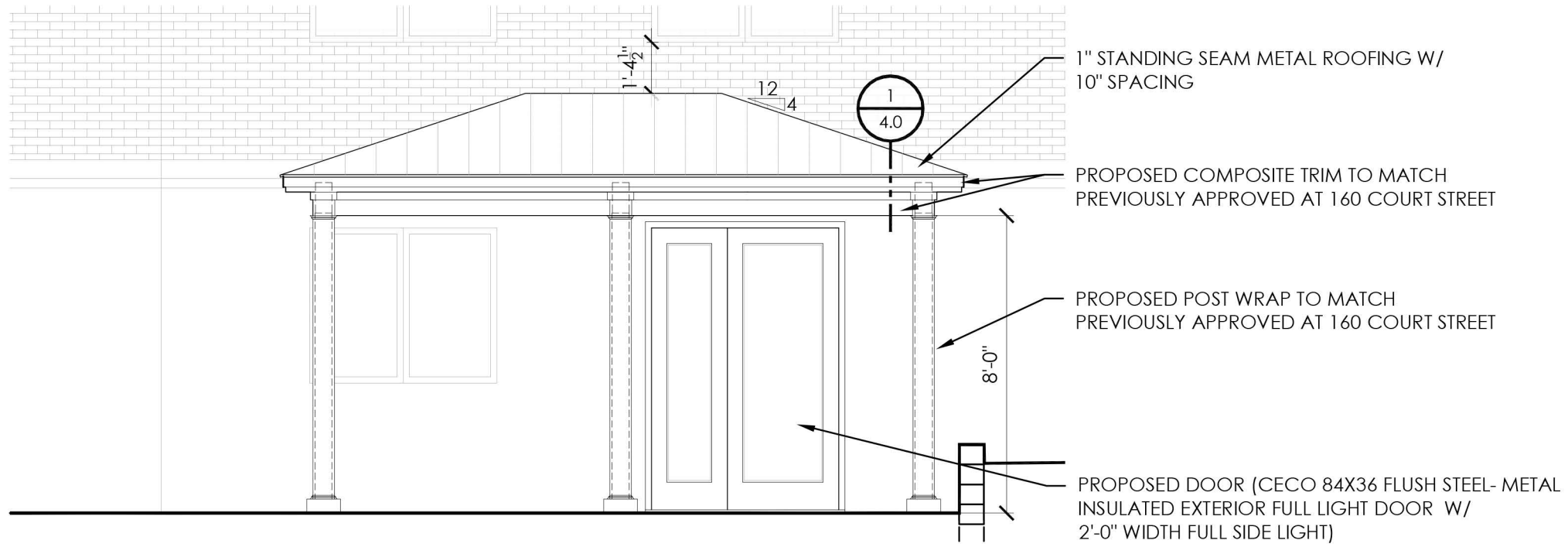
PROPOSED 3D VIEW

1 PROPOSED ELEVATION
1/4" = 1'-0"



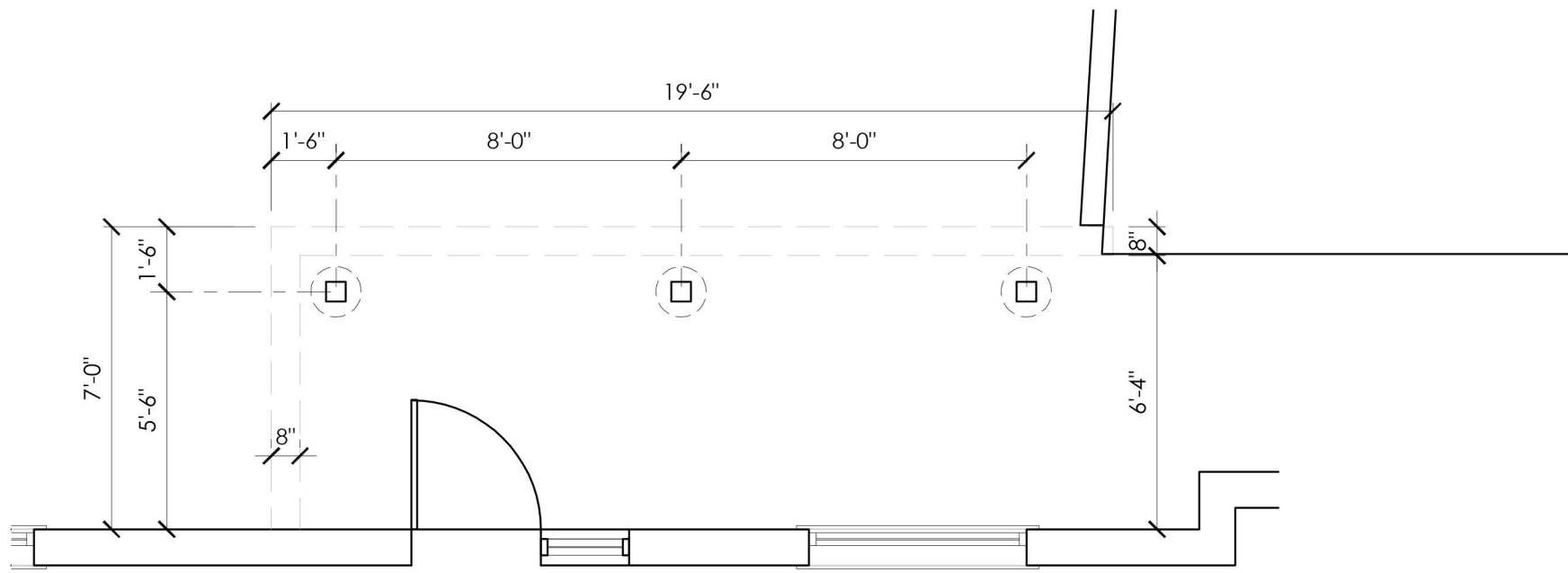
2 PROPOSED PLAN
1/4" = 1'-0"



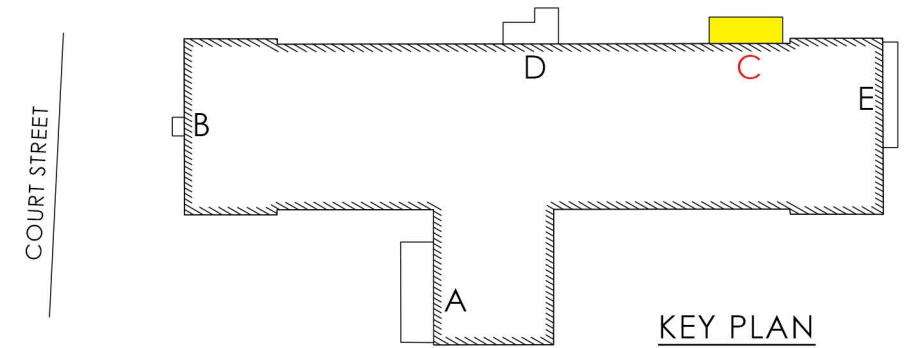


PROPOSED 3D VIEW

1 PROPOSED ELEVATION
1/4" = 1'-0"

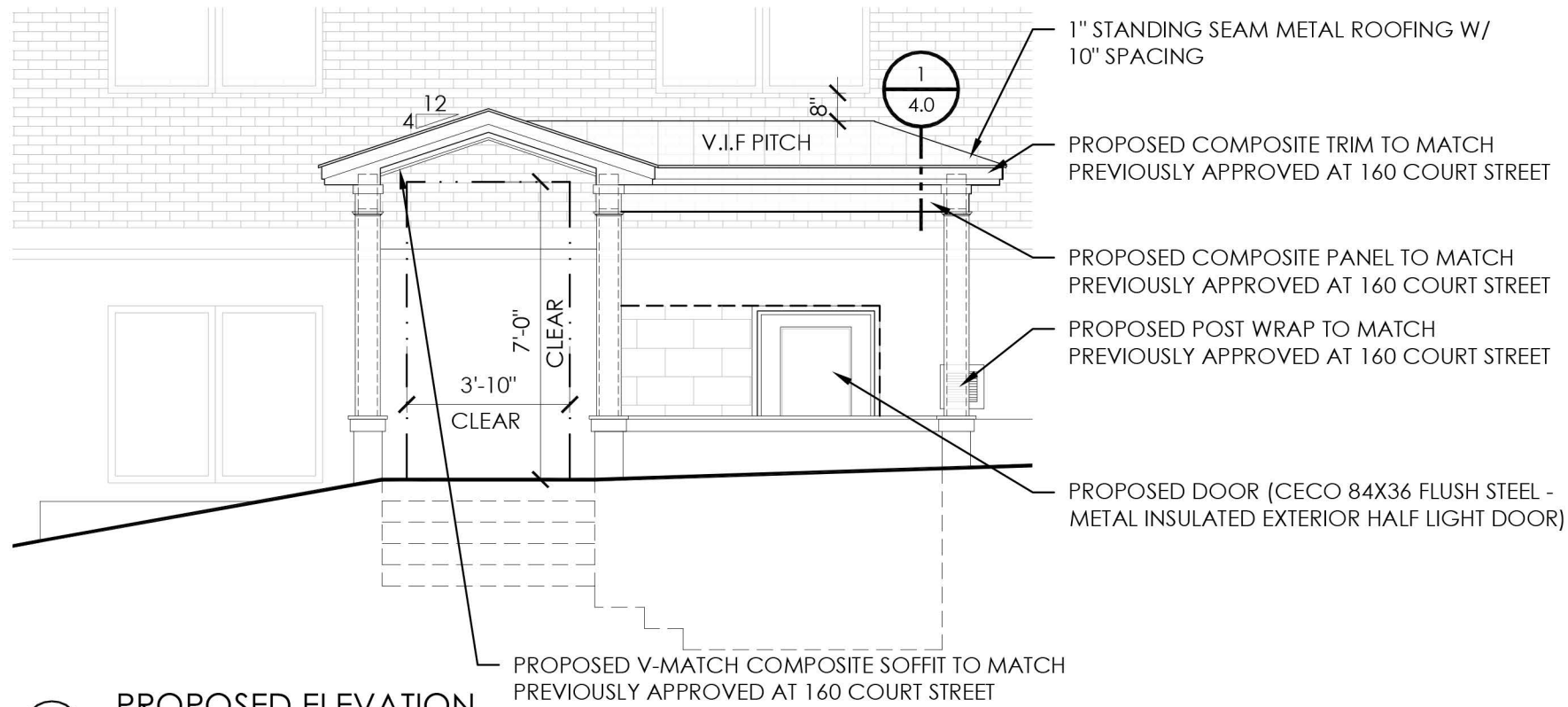


2 PROPOSED PLAN
1/4" = 1'-0"



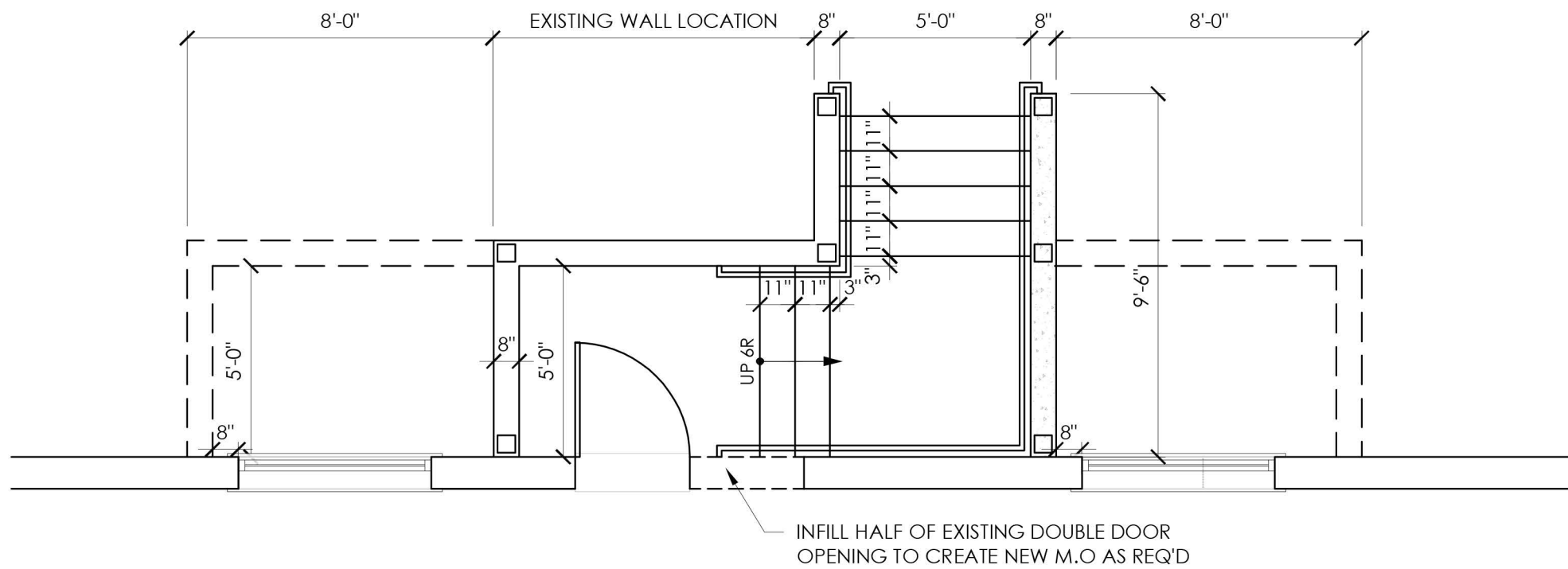
KEY PLAN



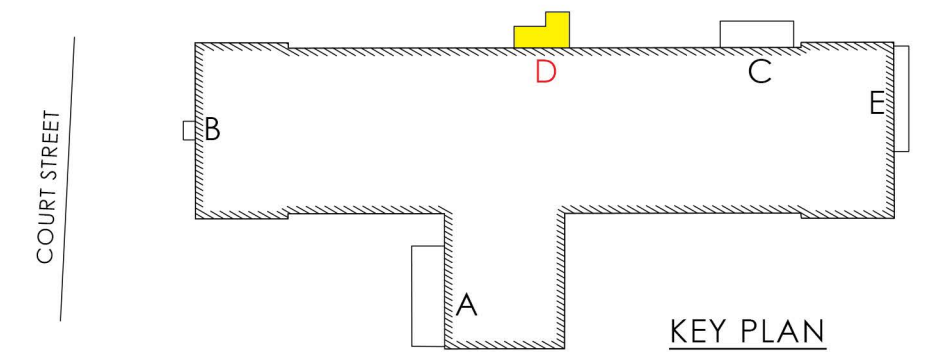


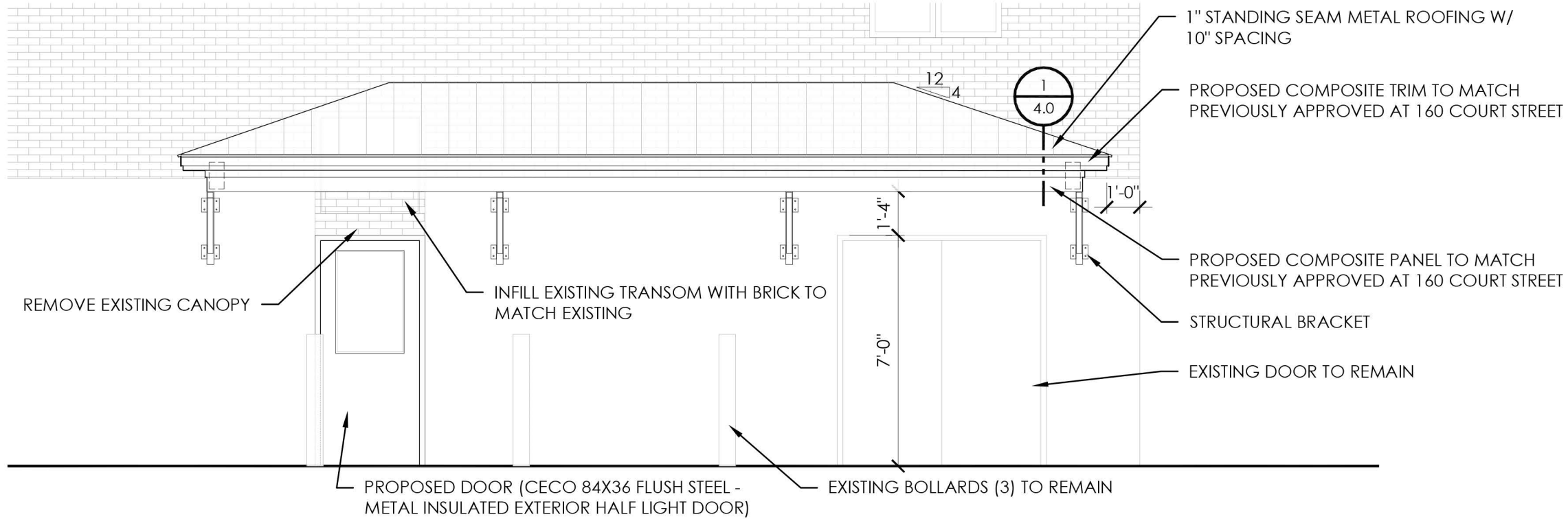
PROPOSED 3D VIEW

1 PROPOSED ELEVATION
1/4" = 1'-0"



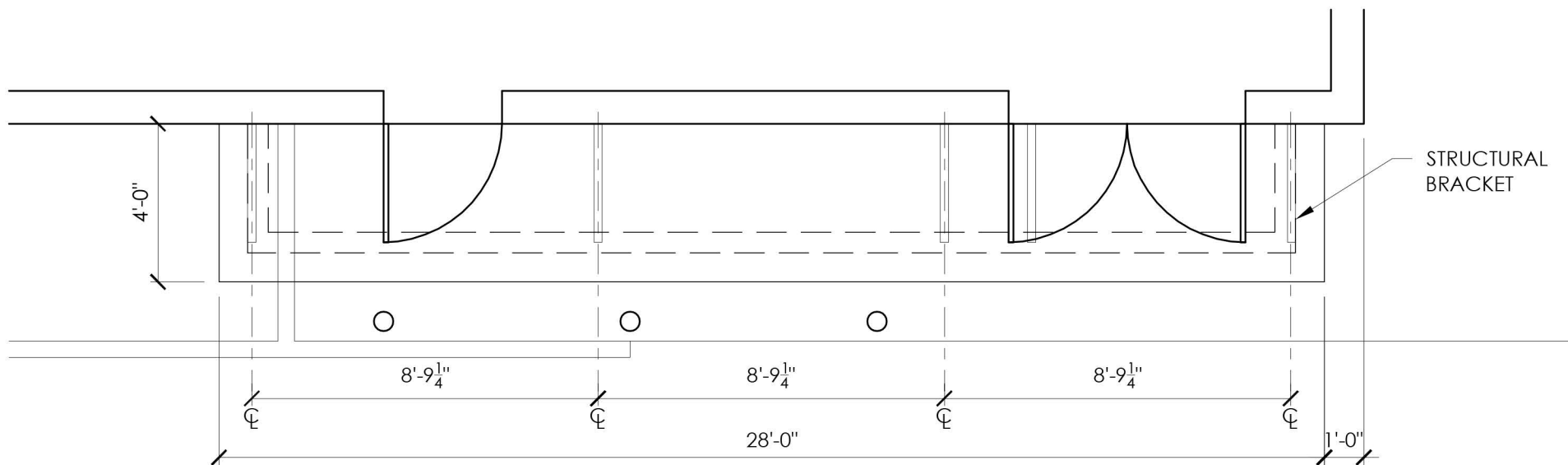
2 PROPOSED PLAN
1/4" = 1'-0"



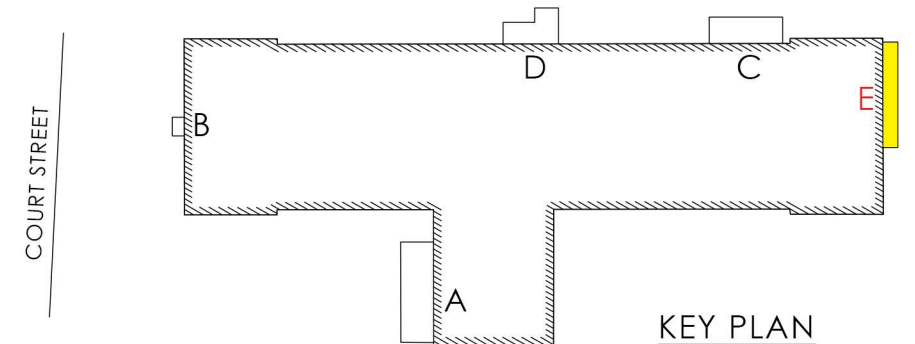


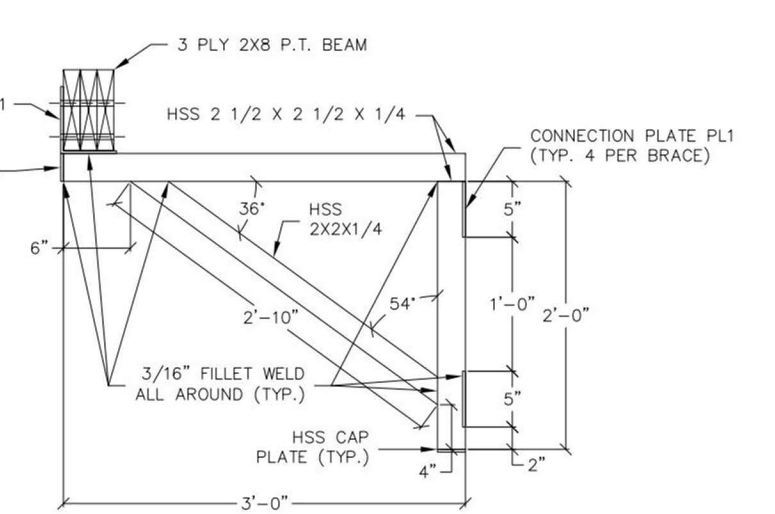
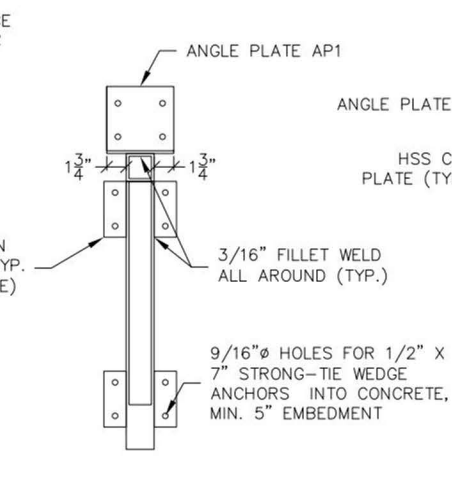
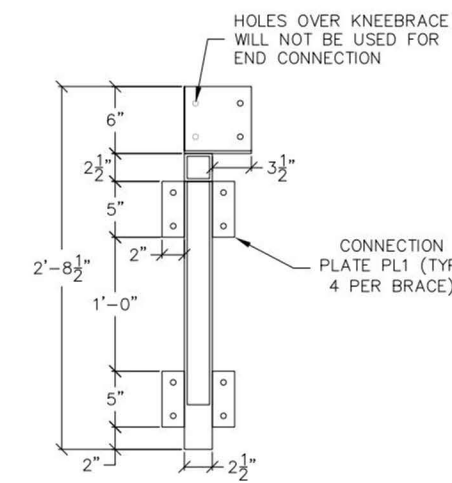
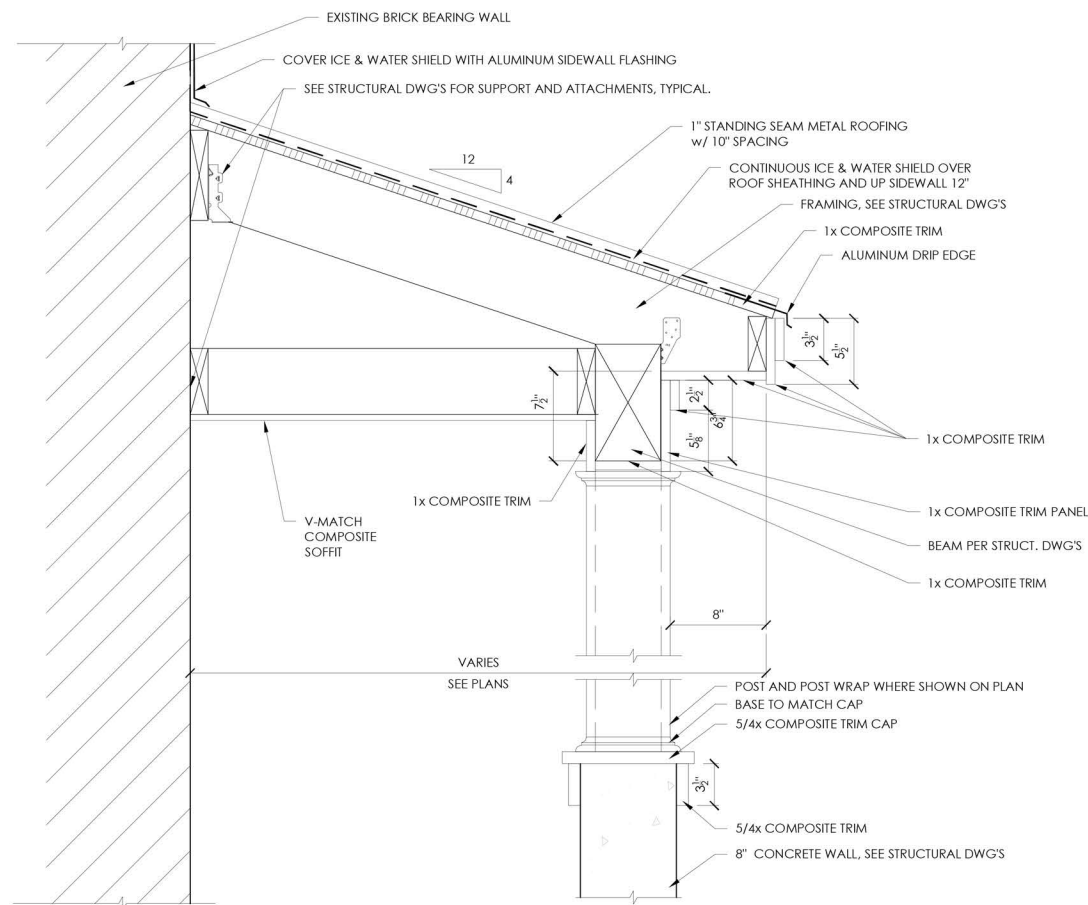
PROPOSED 3D VIEW

1 PROPOSED ELEVATION
1/4" = 1'-0"



2 PROPOSED PLAN
1/4" = 1'-0"





END KNEE-BRACE (TYP. 2)

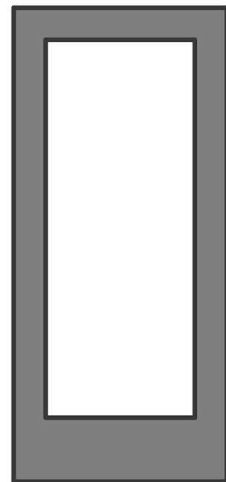
CENTER KNEE-BRACE (TYP. 2)

NOTE: LEFT ORIENTATION SHOWN (TYP. 1),
RIGHT ORIENTATION SIMILAR (TYP. 1)

KNEE-BRACE CONNECTION DETAIL

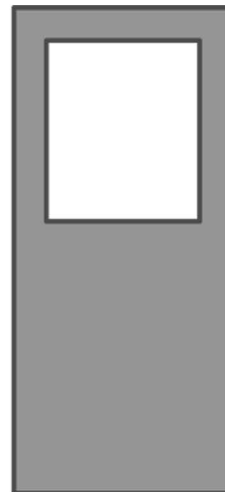
1 1/2" = 1'-0"

1 CANOPY
3" = 1'-0"



FULL LIGHT DOOR

Manufacturer: **CECO 84x36 FLUSH STEEL METAL INSULATED EXTERIOR FULL LIGHT DOOR**
Color: **BLACK**



HALF LIGHT DOOR

Manufacturer: **CECO 84x36 FLUSH STEEL METAL INSULATED EXTERIOR HALF LIGHT DOOR**
Color: **BLACK**



GLASS DOOR

(TO MATCH PREVIOUS APPROVAL AT 160 COURT STREET)
Manufacturer: **NABCO GT1175 AUTOMATIC SLIDING DOOR**
Color: **BLACK**

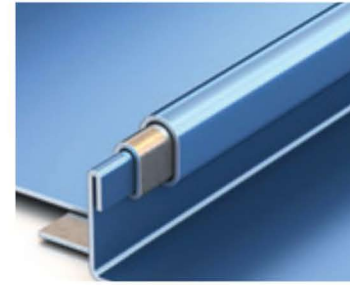




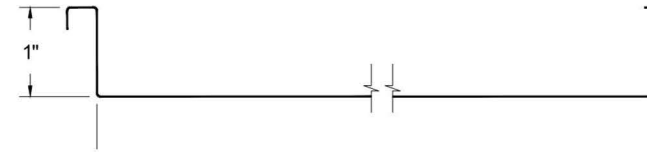
COMPOSITE TRIM

(TO MATCH PREVIOUSLY APPROVED AT 160 COURT STREET)

Manufacturer: **HARDIETRIM SMOOTH**
 Color: **TBD**



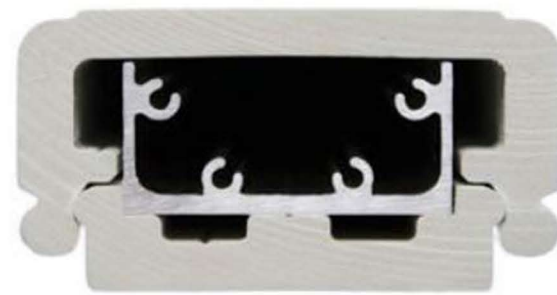
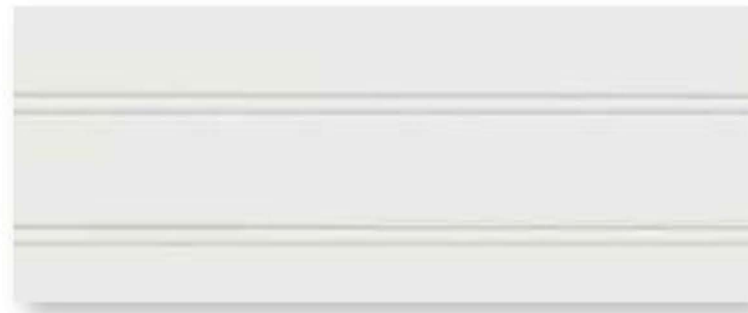
Double lock panel



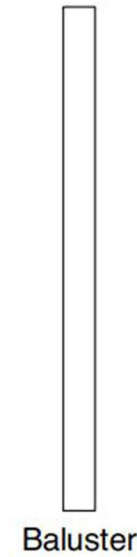
STANDING SEAM METAL ROOFING

Manufacturer: **DREXEL DMC 100SS STANDING SEAM**
 Color: **BRONZE**

BEADED PORCH PANEL



RS35350 Flat



Baluster



COMPOSITE SOFFIT

(TO MATCH PREVIOUS APPROVAL AT 160 COURT STREET)

Manufacturer: **HARDIESOFFIT**
 Color: **TBD**

RAILING

(TO MATCH PREVIOUS APPROVAL AT 160 COURT STREET)

Manufacturer: **BROSCO INTEX - DARTMOUTH**
 Color: **TBD**

COLUMN

(TO MATCH PREVIOUS APPROVAL AT 160 COURT STREET)

Manufacturer: **BROSCO - INTEX - DARTMOUTH**
 Color: **PAINT TO MATCH ADJACENT STOREFRONT TRIM**

