

**ATTN: Historic District  
Commission**

**RE: April 6, 2022 Meeting  
129 State Street  
Portsmouth, NH 03801**

**129 State Street  
Doyle Residence – Bill Doyle & Stephanie Nam**

**CONTACT:  
Shayne Forsley  
Hampshire Development Corp.  
[Shayne.forsley@hdcgc.net](mailto:Shayne.forsley@hdcgc.net)  
603.997.2519**

# HAMPSHIRE DEVELOPMENT CORPORATION

General Contractor

---

March 17, 2022

City of Portsmouth  
Planning Department  
1 Junkins Avenue  
Portsmouth, NH 03801

Attention: Historic District Commission  
RE: 129 State Street (LUHD-414)

The applicant and homeowners of 129 State Street, Bill & Stephanie Doyle requests to modify the façade to their property and add dormers for their use. The proposed design includes:

- Removal of the decorative window dressings
- Replacement of the non-historic windows & addition/reconfiguration of windows facing Sheafe Street
- Addition of limestone sills & headers on original masonry structure
- Addition of (2) skylights on State Street & shed dormer facing Sheafe Street
- Addition of oculus on main ridge of roof, and skylight on addition hip roof
- Addition of hip roof to rear portion of the modern structure
- New pediment option at main entry
- Replacement of asphalt shingle roof with synthetic slate
- Reconfiguration of garage entry & civilian entry at the rear of the modern addition on Sheafe Street
- Replacement of existing siding to modern addition with period appropriate clapboard or composite siding
- Addition of exterior lights above the garage doors and balcony facades
- General clean up of masonry & exterior trim to restore the structure back to its original form

The proposed architectural design is included in the package for your review and comment. We look forward to meeting with you for a work session for this project.

Sincerely,

Shayne Forsley  
General Manager

Cc: Bill Doyle & Stephanie Nam - Owners  
129 State Street  
Portsmouth, NH 03801













④ Courtyard View 1



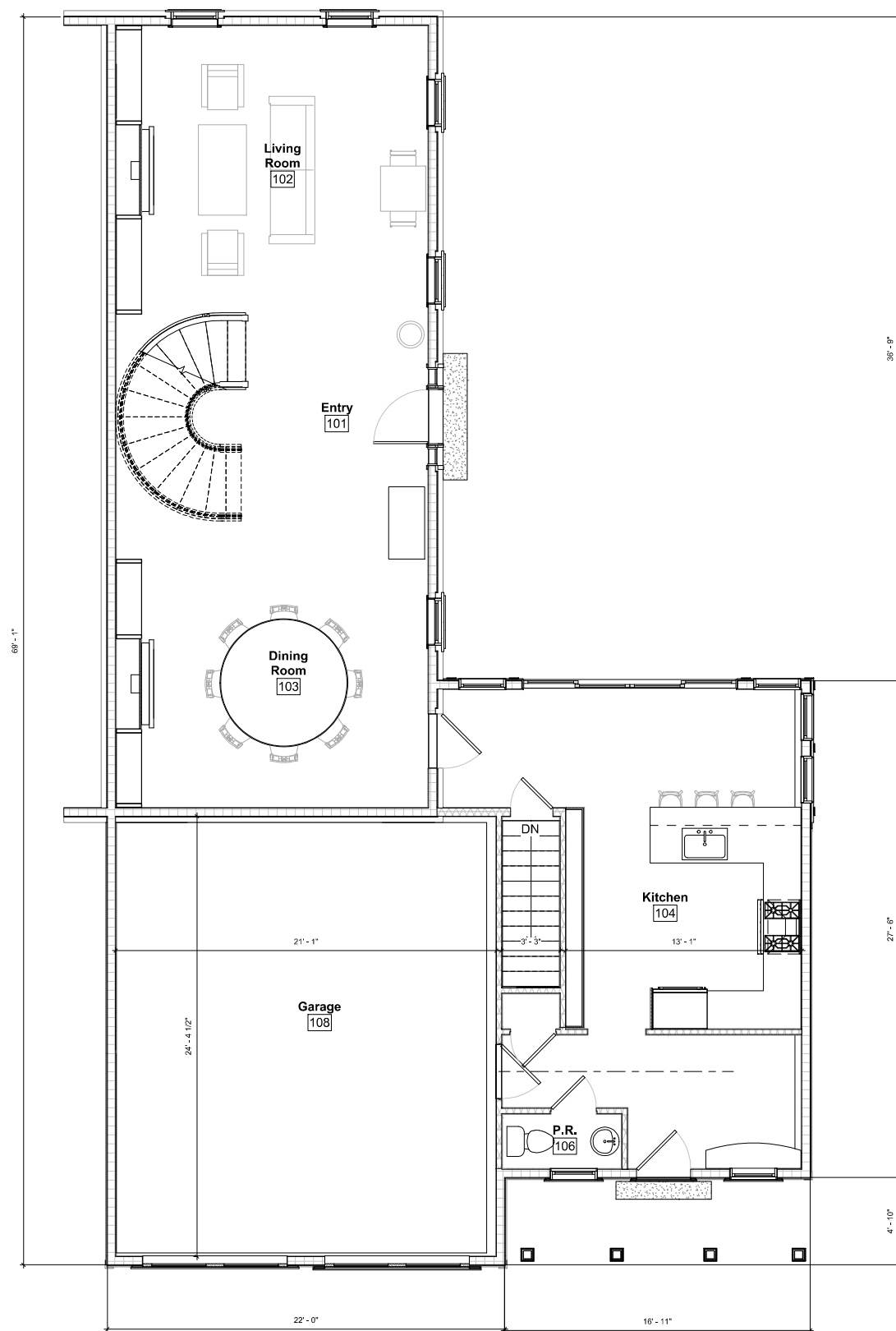
③ Sheafe St View 3



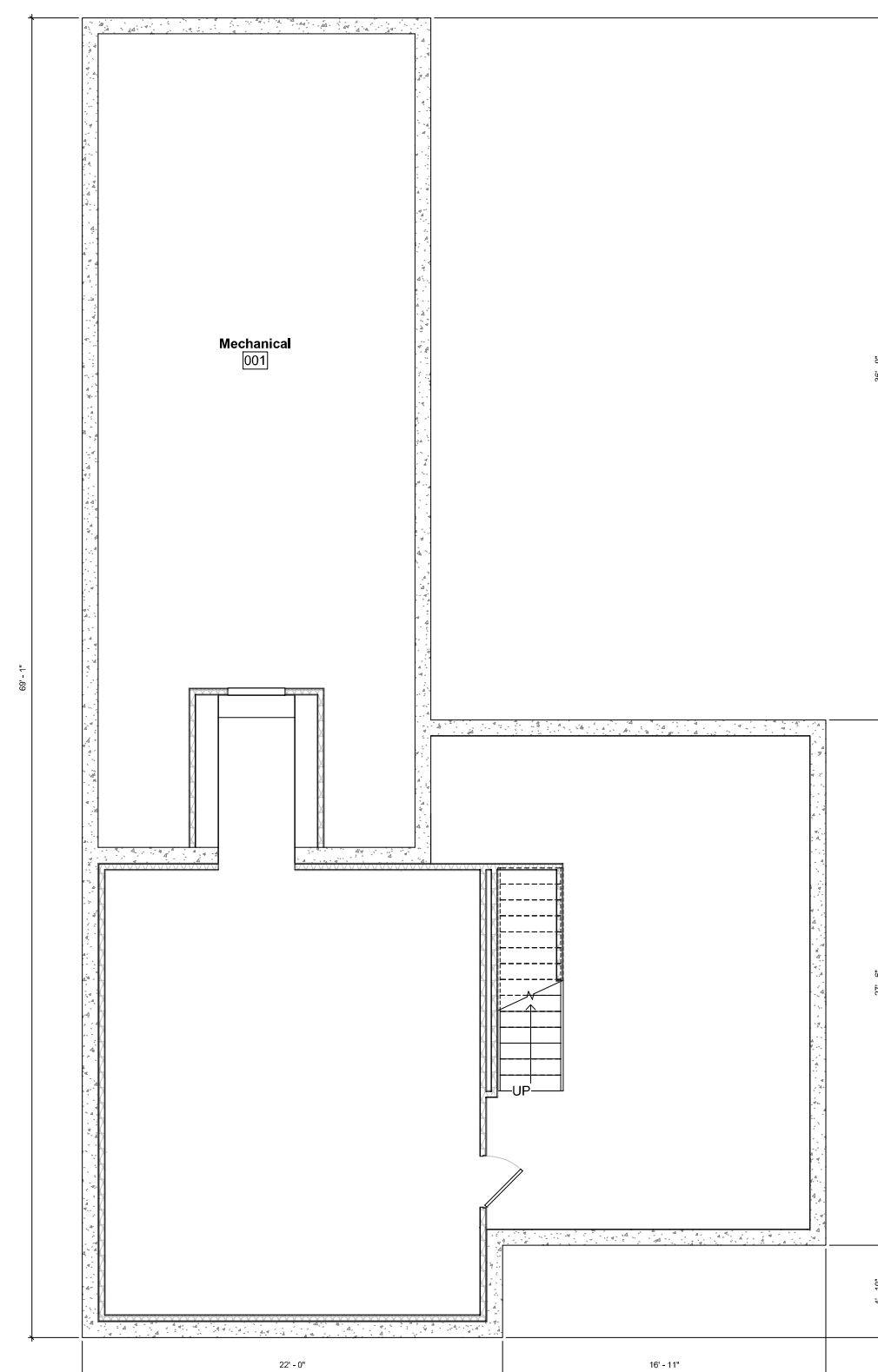
② Sheafe St View 2



① Sheafe St View 1

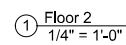
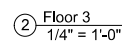
[illegible]

② Floor 1  
1/4" = 1'-0"



① Basement  
1/4" = 1'-0"

## A1.2









④ North - Existing  
1/8" = 1'-0"



① South - Existing  
1/8" = 1'-0"

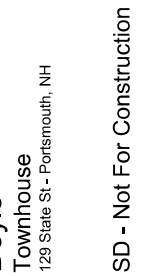


③ North - Proposed  
1/4" = 1'-0"

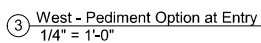
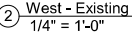


② South - Proposed  
1/4" = 1'-0"

#	Date	Note
3	2022.01.14	HDC Work Session
4	2022.02.16	HDC Work Session 2
5	2022.03.16	HDC

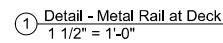
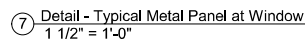
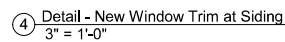
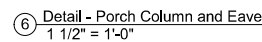
[illegible]

## A2.2



Existing front door and glass  
West - Proposed  
1/4" = 1'-0"





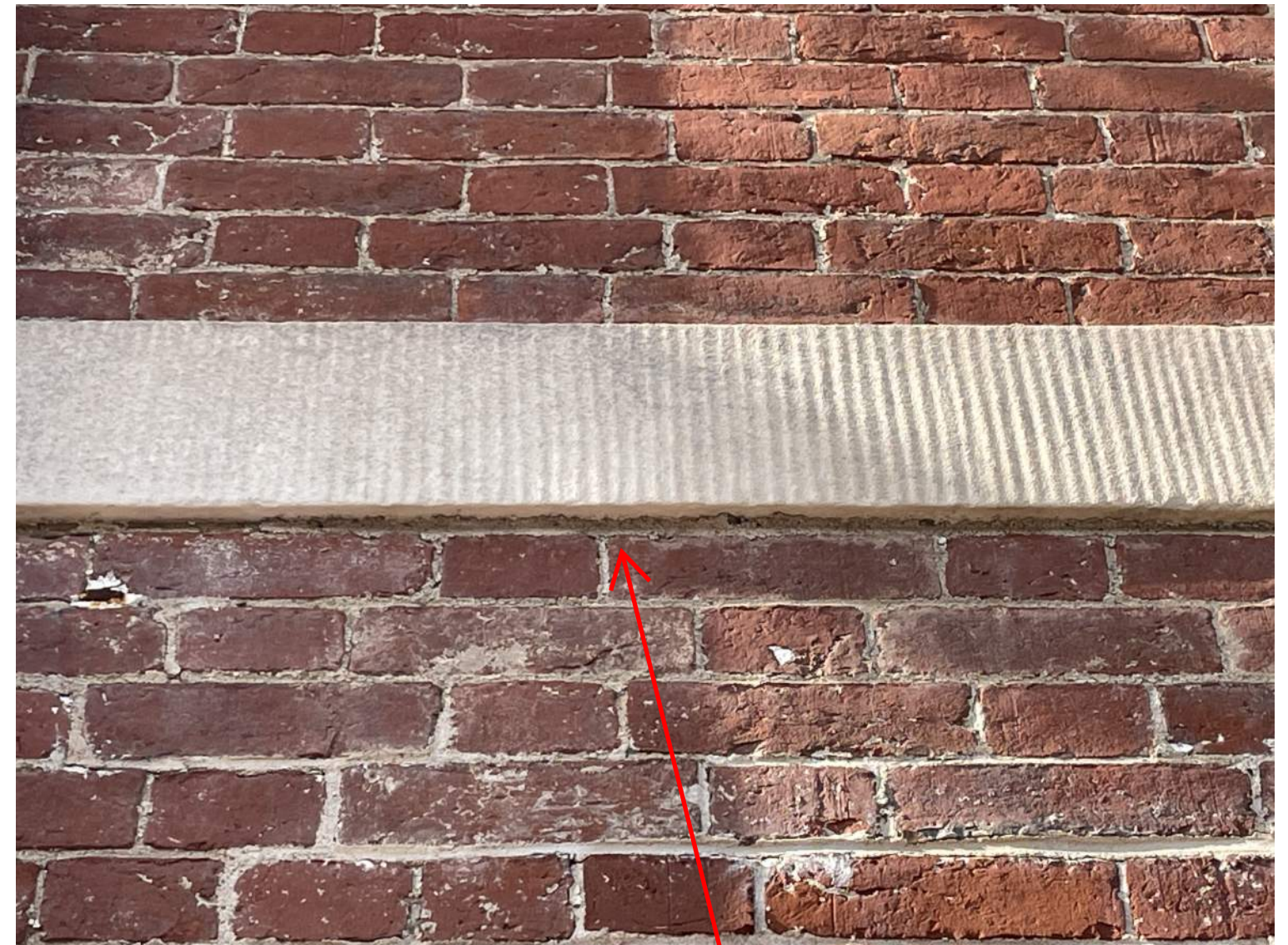
# **Material Specifications & Cut Sheets**



## Stone banding reference for proposed sills & heads



Limestone banding on  
State Street facade  
(EXISTING)



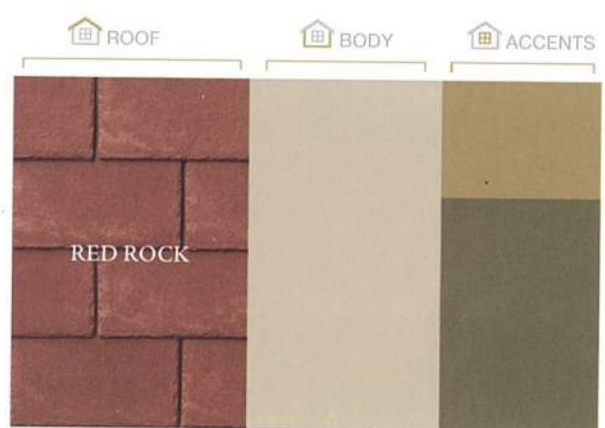
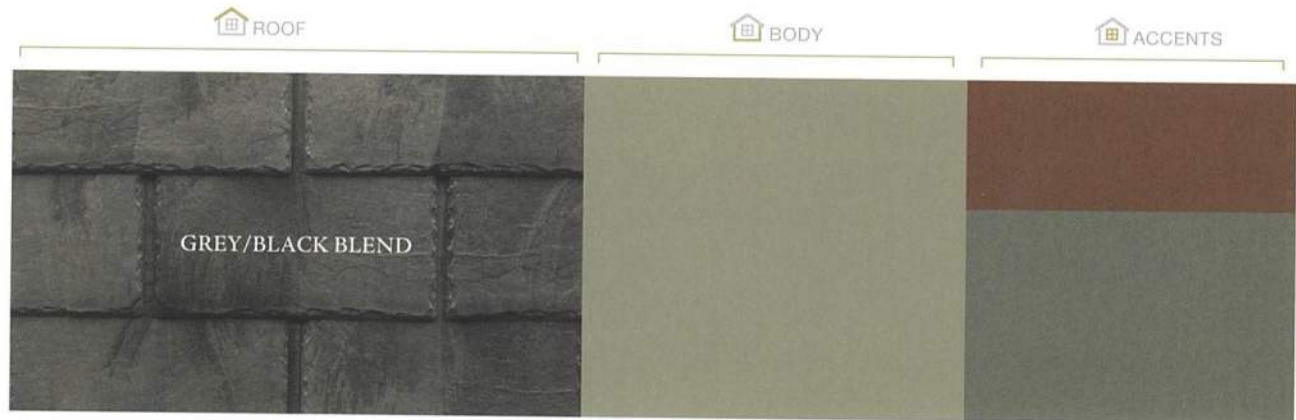
Limestone banding  
close-up (EXISTING)



# Classic SLATE

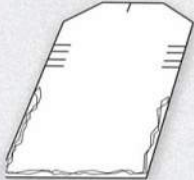
# Color

# Boral Inspire Synthetic Slate Shingles





# Specifications

## CLASSIC SLATE | Single Width

Class A: Item #4IFZE**** Class C: Item #4IFUE****	Exposure	Width	Height		Piece	Bundle	Square	Pallet	Truck
	Max: 7-1/2" Can be installed at 6" to 7-1/2"	12"	18"	Weight	1.5 lbs.	38 lbs.	240 lbs.	2,400 lbs.	42,500 lbs.
				Pieces	1	25	160	1,600	28,000
				Bundles	—	—	6.4	64	1,120
				Squares	—	—	—	10	175
				Pallets	—	—	—	—	18

## CLASSIC SLATE - STARTER

## CLASSIC SLATE - HIP AND RIDGE

Class A - Item #4IKZE****A Class C - Item #4IKUE****A	Width	Height	Weight / Piece	Weight / Bundle	Pieces / Bundle	Class A - Item #4INZE****A Class C - Item #4INUE****A	Width	Length	Exposure	Preformed Pitch	
	12"	13-1/2"	1 lbs.	25 lbs	25		12"	18"	6"-7.5"	3/12 - 18/12	
	Pieces / Liner Foot		Liner Feet / Bundle				Weight / Piece	Weight / Bundle	Pieces / Bundle	Pieces / Liner Foot	Liner Feet / Bundle
	1		25				1.5 lbs.	38 lbs.	25	1.6	15.6

TEST	TESTING PERFORMED	RESULTS FOR
Fire Rating	In accordance with UL790 / ASTM E108	Class A* or Class C Fire Rated System. (Depending on system)
Hail Rating	In accordance with UL2218	Class 4
Accelerated Ultra Violet Exposure	In accordance with ASTM G154 Xenon Arc Chamber 9,500+ hours	Tile exhibited virtually no fade and with no trace of cracking, spalling or deformation.
Wind Driven Rain / Wind Uplift	In accordance TAS 100-95; UL 580	Up to 110 mph. No water infiltration through sheathing. No tiles blew off, tore or blew upward.
Freeze-Thaw Cycle	In accordance with ASTM C666/C666M	No signs of damage or cracking after 300+ cycles.
Water Absorption	In accordance with ASTM C272	No appreciable weight gain.
Water Permeation	In accordance with ASTM E96/E96M	Tile shown to be impermeable per ASTM test methods.
Approvals: Florida Building Code Org. FL#7409, FL#16269, FL#16856; Texas Department of Insurance RC-404; CCRR-0188		

Please refer to our website for installation guides.

\*Contact Inspire Roofing Products for specific application requirements for UL Class A Fire rated systems.

\*\*\*\* Indicates color number.

Cover: Classic | Granite





INSPIRE<sup>®</sup>  
ROOFING PRODUCTS  
by BORAL



SKU: 41FUE5235

Classic Slate - Mist Grey

[www.BoralRoof.com](http://www.BoralRoof.com)



INSPIRE<sup>®</sup>  
ROOFING PRODUCTS  
by BORAL



SKU: 41FUE1150

Classic Slate - Steel Grey

[www.BoralRoof.com](http://www.BoralRoof.com)



# Lead Coated Copper - Dark Patina Finish





## ANDERSEN E-Series Double-Hung Windows



# DOUBLE-HUNG WINDOW

## FEATURES

### DOUBLE-HUNG WINDOWS

#### FRAME & SASH

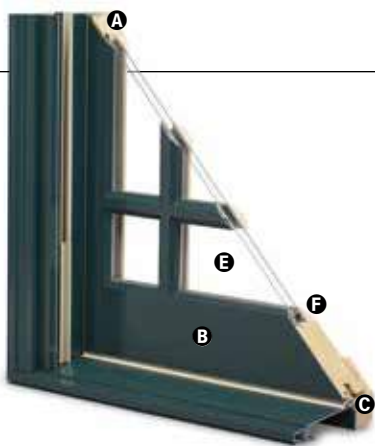
**A** Select wood components are kiln dried and treated with water/insect repellent and preservative. Interior wood surfaces are available in pine, mixed grain Douglas fir, cherry, hickory, mahogany\*, maple, oak, walnut, alder or vertical grain Douglas fir. Interior surfaces are available unfinished or factory primed. Factory-applied finishes are available in a variety of stain and paint options.

**B** Wood components are fitted with aluminum extrusions on the exterior. 50 exterior colors that meet AAMA 2604 and 2605 specifications are available, as well as custom colors. Also available is a selection of seven exterior anodized options.

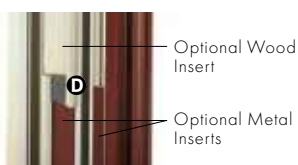
Optional vinyl installation flanges are pre-applied into a kerf on the frame exterior to facilitate installation. Optional aluminum flanges or metal installation clips are available.

**C** Compression bulb weatherstrip is applied on the bottom sash, head jamb, at the meeting rail and on side jambs for a maximum weather seal.

Jamb liners encase balancer assemblies that allow each sash to be tilted 90° inward from a bottom pivot and stay securely in place for washing.



**D** Double-hung jamb liners incorporate synthetic interior and exterior inserts or optional painted aluminum exterior and wood-veneered interior inserts.



#### GLASS

**E** High-Performance Low-E4® glass with a low-conductivity spacer. Triple-pane glass, tinted, clear dual-pane, high-altitude glass and other special glazing options are available.

**F** Glass is fixed in place from the interior with wood stops that can be removed for easy reglazing if necessary. Glass stops available in ovolo (colonial) and contemporary profiles.

#### HARDWARE

Sash lock/tilt mechanisms and keepers give a slim, more traditional design and allow opening and tilting of the window in one operation. Tilting the sash from the inside for cleaning is effortless.

Optional surface mount sash lifts allow for easy operation. Units less than 3' wide use one lift. Units 3' wide and greater use two lifts.

### HARDWARE OPTIONS



Lock



Sash Lift

Antique Brass | **Black** | Bright Chrome | Bronze | Gold  
Oil Rubbed Bronze | Pewter | Polished Brass | Satin Chrome | White

Windows with VeriLock® sensors use a different sash lock. See the next page for details.

#### HARDWARE FINISHES



Oil rubbed bronze is a "living" finish that will change with time and use.

## EXTERIOR & INTERIOR OPTIONS

**EXTERIOR COLORS** 50 exterior colors, 7 anodized finishes and custom colors. See exterior colors on page 11.

#### INTERIOR WOOD SPECIES



Pine | Mixed Grain Douglas Fir | Oak | Maple | Hickory | Mahogany\* | Cherry | Walnut | Vertical Grain Douglas Fir | Alder

#### FACTORY-FINISHED INTERIORS



Clear Coat | Wheat | Autumn Oak | Golden Hickory | Honey | Cinnamon | Russet | Mocha | Espresso

#### INTERIOR PAINTED OPTIONS



White | Birch Bark | Primed (for paint) | Canvas | Sandtone | Terratone | Forest Green | Dark Bronze | Dove Gray | Prairie Grass | Red Rock | Cocoa Bean | Black | Anodized Silver

\*Actual wood species is either Sapele or Sipo, both non-endangered species grown in Africa, with color and characteristics similar to Central American mahoganies. Printing limitations prevent exact replication of colors and finishes. Please see your Andersen supplier for actual color and finish samples.



## ACCESSORIES Sold Separately

### DOUBLE-HUNG WINDOWS

#### HARDWARE

##### Window Opening Control Device Kit

An optional Window Opening Control Device Kit is available, which limits opening the sash to less than 4" when the window is first opened. Available in stone and white.

#### SENSORS

##### VeriLock® Security Sensors



VeriLock sensors are unique as they detect whether the windows are locked or unlocked\* — a feature no other sensors can provide. See page 27 for Smart Home options.

##### Open/Closed Sensors

Wireless open/closed sensors are available in four colors. See page 27 for details.

#### INSECT SCREENS

##### Conventional Insect Screens



Charcoal fiberglass screen mesh fits into an aluminum frame in all 50 exterior colors and seven anodized finishes. Available in half or full insect screens. Aluminum screen mesh is available as an option.

##### TruScene® Insect Screens

TruScene insect screens available in all 50 exterior colors and seven anodized finishes.

See page 24 for more information on our insect screen options.

#### GRILLES

##### Full Divided Light

Permanent interior and exterior grilles with grille spacer bars between two panes of glass. Available in 5/8", 7/8", 1 1/8", 1 1/2", or 2 1/4" widths. Interior grilles are available with ovolo or contemporary profile (ovolo profile shown below). Not all widths are shown.



5/8"

7/8"



1 1/8"

1 1/2"

##### Simulated Divided Light

Permanent exterior and interior grilles without grille spacer bars. Available in 5/8", 7/8", 1 1/8", 1 1/2", or 2 1/4" widths. Interior grilles are available with ovolo or contemporary profile (ovolo profile shown below). Not all widths are shown.



7/8"

##### Finelight™

##### Grilles-Between-the-Glass

Available in 5/8" flat or 1" contoured aluminum profiles. Two-tone colors of pebble tan/colony white, sierra bronze/colony white or forest green/colony white are available on the 1" profile.



5/8" Flat

1" Contoured

##### Removable Interior Wood Grilles

Removable interior wood grilles are available in a 7/8" width and ovolo or contemporary profiles. Optional surround for removable grille and permanent exterior grilles also available.

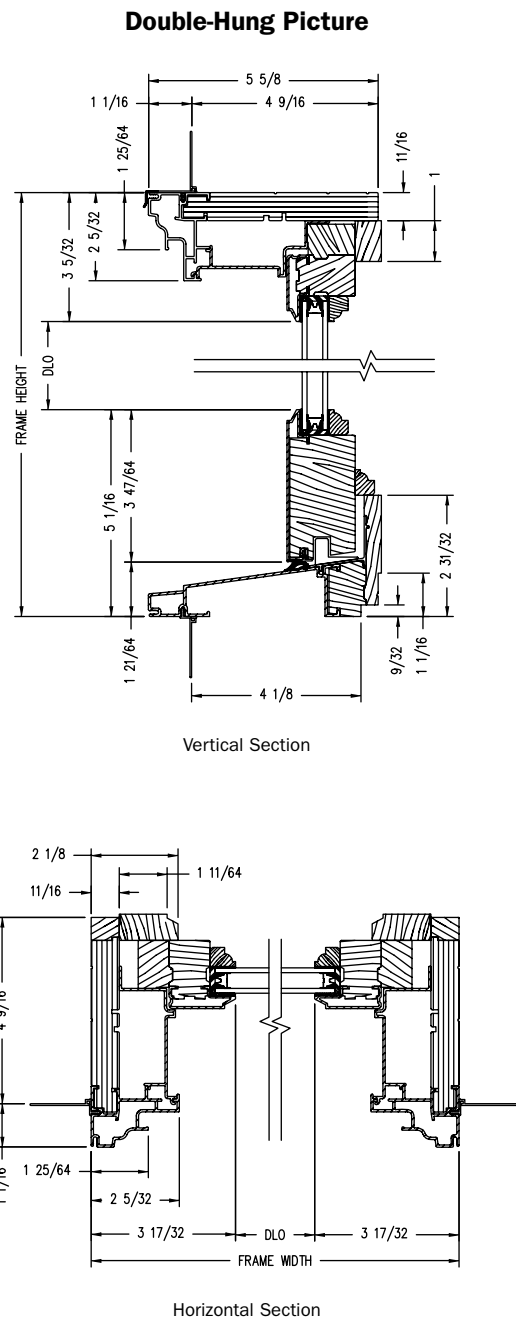
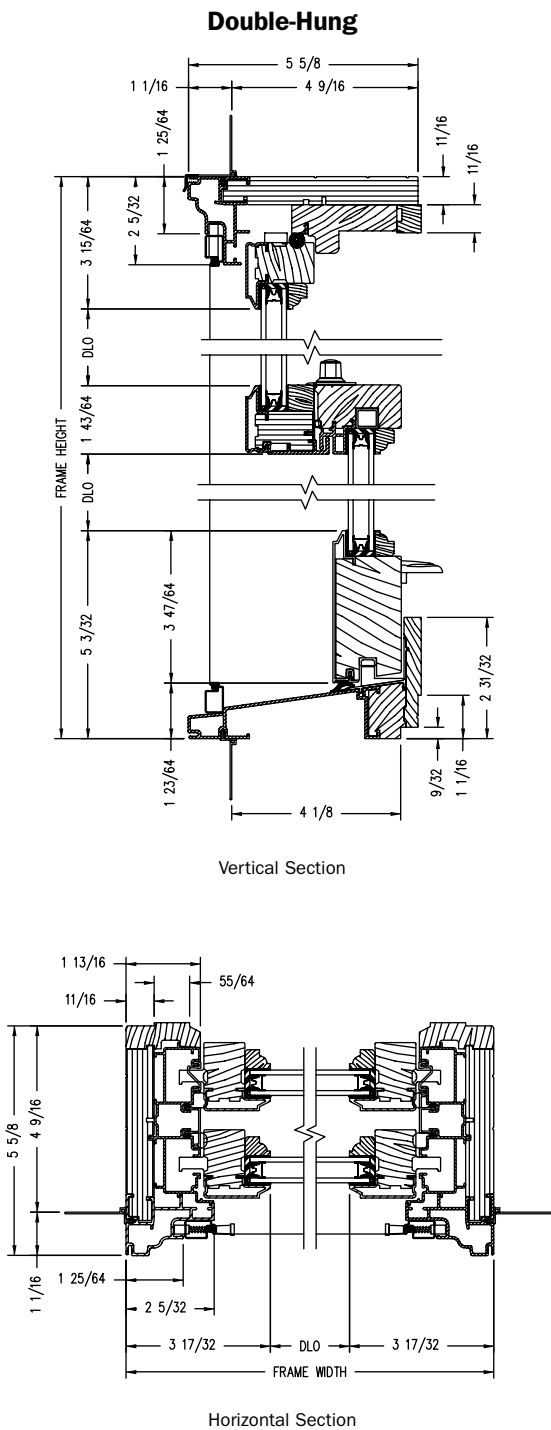


7/8"

See page 22 for more information on grilles.

\*When properly configured and maintained with a professionally installed security system and/or self monitoring system compatible with Honeywell® 5800 controls. See your Andersen supplier for more information.

## Double-Hung Windows



Shown with ovolo (colonial) glass stops.

PROPER INSTALLATION AND MAINTENANCE OF E-SERIES PRODUCTS IS ESSENTIAL TO ATTAIN OPTIMUM PERFORMANCE AND OPERATION. WRITTEN INSTALLATION INSTRUCTIONS THAT PROVIDE GUIDELINES FOR PROPER INSTALLATION ARE AVAILABLE BY VISITING [ANDERSENWINDOWS.COM](http://ANDERSENWINDOWS.COM). CUSTOM SIZES ARE AVAILABLE. CONTACT YOUR LOCAL SUPPLIER FOR MORE INFORMATION. DRAWINGS ARE NOT TO SCALE.

**VELUX®**

The No Leak Skylight™

## Skylight Specifications

# Fixed Skylight

Deck and Curb-Mounted

*Bringing light to life™*

# Fixed Skylights

Deck-Mounted, Curb-Mounted

The No Leak Skylight  
No Leak Promise  
No Worries

Deck-Mounted - FS  
Mounts directly to the roof deck



Curb-Mounted - FCM  
Mounts directly to a site-built curb



## Benefits

- Pre-finished white wood frame and protective aluminum or copper cladding.
- Streamlined exterior profile does not obstruct your roofline.
- Streamlined exterior profile does not obstruct your roofline.
- Pre-mounted Pick&Click!™ system brackets make the installation of sunscreen blinds a snap.

FS Model Size	14° - 85° 3:12 - 137:12	A06	C01	C04	C06	C08	C12	D26	D06	M02	M04	M06	M08	S01	S06
Rough Opening	(W-in. x H-in.)	14 1/2 x 45 3/4	21 x 26 7/8	21 x 37 7/8	21 x 45 3/4	21 x 54 7/16	21 x 70 1/4	22 1/2 x 22 15/16	22 1/2 x 45 3/4	30 1/16 x 30	30 1/16 x 37 7/8	30 1/16 x 45 3/4	30 1/16 x 54 7/16	44 1/4 x 26 7/8	44 1/4 x 45 3/4
Model FS sizes D26 and D06 fit perfectly between roof trusses.															

FCM Model Size	0° - 60° 0:12 - 20:12	1430	1446	2222	2230	2234	2246	2270	3030	3046	3055	3434	3446	4646	4672
Outside Curb	(W-in. x H-in.)	17 1/2 x 33 1/2	17 1/2 x 49 1/2	25 1/2 x 25 1/2	25 1/2 x 33 1/2	25 1/2 x 37 1/2	25 1/2 x 49 1/2	25 1/2 x 73 1/2	33 1/2 x 33 1/2	33 1/2 x 49 1/2	33 1/2 x 58 1/2	37 1/2 x 37 1/2	37 1/2 x 49 1/2	49 1/2 x 49 1/2	49 1/2 x 75 1/2
Max. Skylight Clearance	(W-in. x H-in.)	18 5/8 x 34 3/8	18 5/8 x 50 3/8	26 5/8 x 26 5/8	26 5/8 x 34 3/8	26 5/8 x 38 3/8	26 5/8 x 50 3/8	26 5/8 x 74 3/8	34 5/8 x 34 3/8	34 5/8 x 50 3/8	34 5/8 x 59 3/8	38 5/8 x 38 3/8	38 5/8 x 50 3/8	50 5/8 x 50 3/8	50 5/8 x 76 3/8

FCM custom sizes available



## Safest Glass to Live Under

Clean, Quiet & Safe

When selecting a VELUX Fixed Skylight rest assured your skylight comes with our most-recommended, top-rated glass: Clean, Quiet & Safe. Named for its three biggest benefits, this glass comes with state-of-the-art, energy-conserving LowE glass, designed to keep your home warmer in the winter and cooler in the summer.

**Clean:** Skylights stay cleaner longer with Neat® glass coating.

**Quiet:** Reduces unwanted outside noise by up to 25% compared to a standard double pane glass and up to 50% compared to a plastic skylight.

**Safe:** Unlike tempered, this glass does not shatter into pieces when cracked.



**ENERGY STAR certified products are the most straightforward way to help meet energy codes.**

Most VELUX residential products are ENERGY STAR certified in all 50 states. By specifying or using ENERGY STAR certified products, architects and builders can use windows and skylights to bring much needed daylight and fresh air inside, creating more attractive buildings and livable spaces while still meeting the local energy codes.

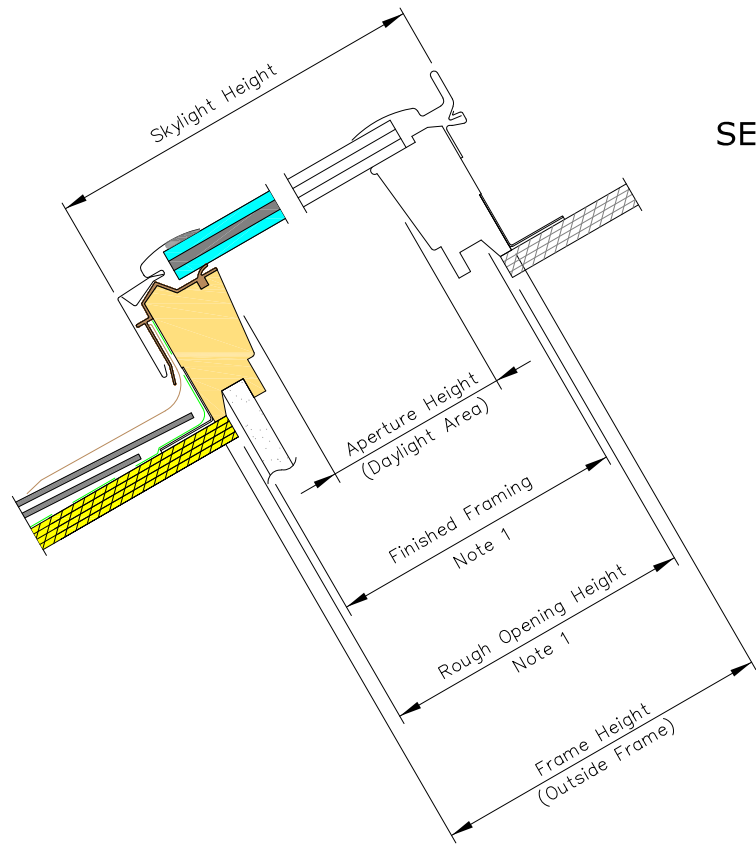
## 3 Layers of Protection

The No Leak Skylight™  
• No Leak Promise • No Worries

- 1 Pre-attached Seal**  
Pre-attached deck seal (deck-mounted) or gasket (curb-mounted) provides a tight seal for leak-proof installation.
- 2 Adhesive Underlayment**  
Adhesive underlayment for secondary water protection against the harshest weather conditions.
- 3 Engineered Flashing**  
Engineered flashing for easy installation and primary water protection.



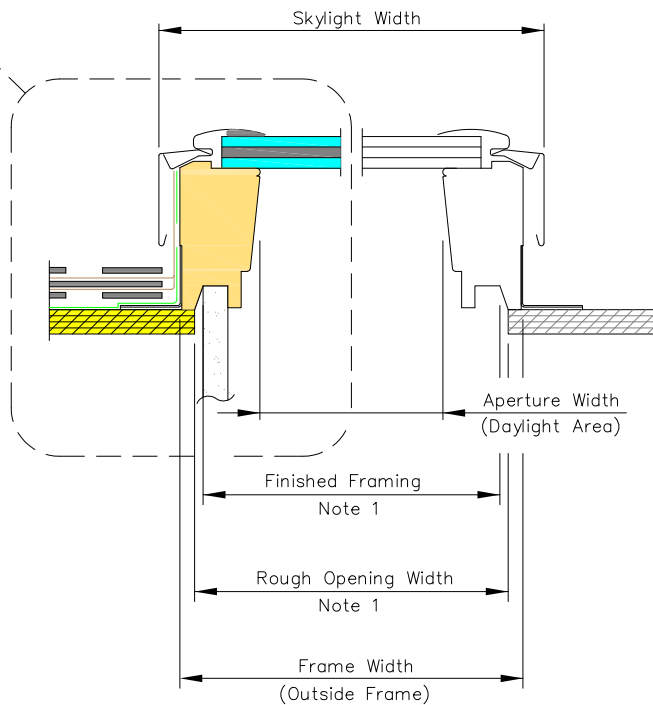




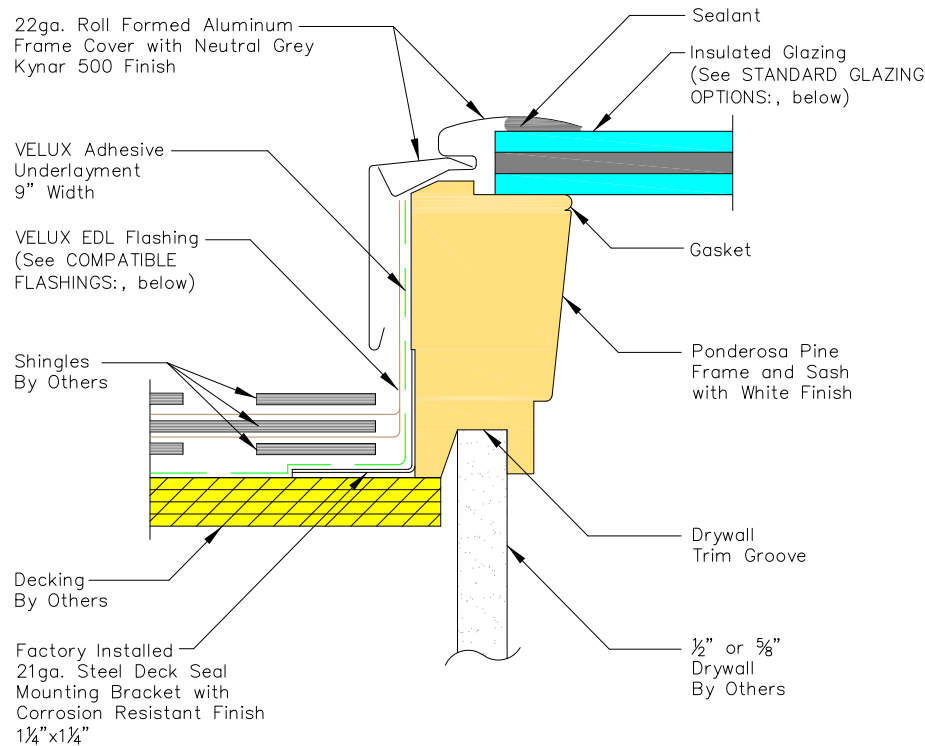
VERTICAL CROSS SECTION

SEE DETAIL

1



HORIZONTAL CROSS SECTION



DETAIL

1

PRODUCT DIMENSIONS

METRIC UNITS (MILLIMETERS)

Size	Rough Opening Width	Frame Width	Frame Aperture Width	Skylight Width	Rough Opening Height	Frame Height	Frame Aperture Height	Skylight Height	Daylight Area (Sq. Meters)
A06	368	387	303	409	1162	1175	1091	1200	.333
C01	533	546	462	568	682	695	611	720	.282
C04	533	546	462	568	962	975	891	1000	.412
C06	533	546	462	568	1162	1175	1091	1200	.504
C08	533	546	462	568	1382	1395	1311	1420	.606
C12	533	546	462	568	1784	1797	1713	1822	.792
D26*	572	590	506	612	582	599	511	620	.259
D06*	572	590	506	612	1162	1175	1091	1200	.552
M02	763	776	692	798	762	775	691	800	.486
M04	763	776	692	798	962	975	891	1000	.617
M06	763	776	692	798	1162	1175	1091	1200	.754
M08	763	776	692	798	1382	1395	1311	1420	.909
S01	1123	1136	1052	1158	682	695	611	720	.644
S06	1123	1136	1052	1158	1162	1175	1091	1200	1.148

IMPERIAL UNITS (INCHES)

Size	Rough Opening Width	Frame Width	Frame Aperture Width	Skylight Width	Rough Opening Height	Frame Height	Frame Aperture	Skylight Height	Daylight Area (Sq. Feet)
A06	14 1/2	15 1/4	11 15/16	16 1/8	45 3/4	46 1/4	42 15/16	47 1/4	3.56
C01	21	21 1/2	18 3/16	22 3/8	26 7/8	27 3/8	24 1/16	28 3/8	3.04
C04	21	21 1/2	18 3/16	22 3/8	37 7/8	38 3/8	35 1/16	39 3/8	4.43
C06	21	21 1/2	18 3/16	22 3/8	45 3/4	46 1/4	42 15/16	47 1/4	5.43
C08	21	21 1/2	18 3/16	22 3/8	54 7/16	54 15/16	51 5/8	55 15/16	6.52
C12	21	21 1/2	18 3/16	22 3/8	70 1/4	70 3/4	67 7/16	71 3/4	8.52
D26*	22 1/2	23 1/4	19 15/16	24 1/16	22 15/16	23 7/16	20 1/8	24 7/16	2.78
D06*	22 1/2	23 1/4	19 15/16	24 1/16	45 3/4	46 1/4	42 15/16	47 1/4	5.94
M02	30 1/16	30 9/16	27 1/4	31 7/16	30	30 1/2	27 3/16	31 1/2	5.15
M04	30 1/16	30 9/16	27 1/4	31 7/16	37 7/8	38 3/8	35 1/16	39 3/8	6.64
M06	30 1/16	30 9/16	27 1/4	31 7/16	45 3/4	46 1/4	42 15/16	47 1/4	8.13
M08	30 1/16	30 9/16	27 1/4	31 7/16	54 7/16	54 15/16	51 5/8	55 15/16	9.77
S01	44 1/4	44 3/4	41 7/16	45 9/16	26 7/8	27 3/8	24 1/16	28 3/8	6.92
S06	44 1/4	44 3/4	41 7/16	45 9/16	45 3/4	46 1/4	42 15/16	47 1/4	12.36

STANDARD GLAZING OPTIONS:

- Laminated LowE3 (04)
- Tempered LowE3 (05)
- Impact (06)
- Snowload (10)

\*Tempered Exterior Pane used with all options

COMPATIBLE FLASHINGS:

- EDL Step flashing
- EKL/EKX Combi flashing
- EDW Tile flashing
- EKW/EKX Combi tile flashing
- EDM Metal roof flashing
- ECB Counter flashing for curbs

\* BUILDER SERIES SKYLIGHT

NOTES:

1. The ROUGH OPENING and FINISHED FRAMING dimensions are based on perpendicular interior finish material on all four sides and these dimensions will vary depending on the roof construction, the thickness and the design of the interior finish material.



VELUX  
1418 Evans Pond Road  
Greenwood, SC 29649  
1-800-88-VELUX  
www.VELUXUSA.com

FS - Fixed Skylight



## Skylight Study



Perspective View from  
across State Street



## Skylight Study



Perspective View  
looking from 129 across  
State Street