



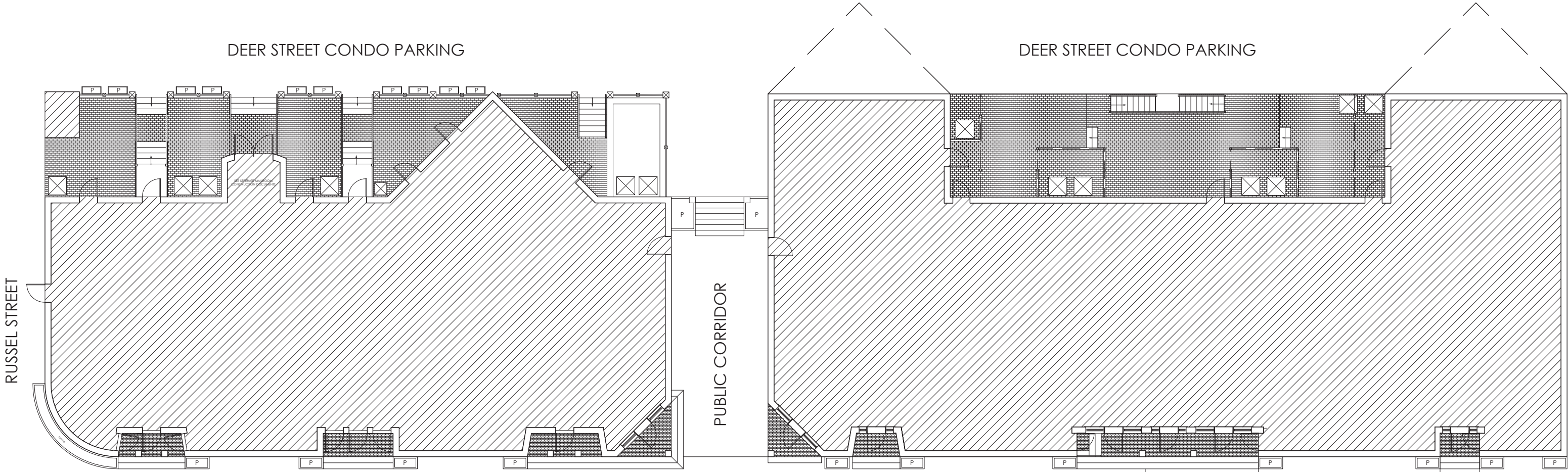
LOCUS MAP



59 DEER ST BUILDING B



33 DEER ST BUILDING A



FIRST FLOOR PLAN BUILDING B

DEER STREET

FIRST FLOOR PLAN BUILDING A

PROPOSD RENOVATIONS FOR
MARKET WHARF CONDOMINIUMS

33 & 59 DEER ST
PORTSMOUTH, NH

LOCUS MAP, SITE PLAN
& FIRST FLOOR PLAN

1/16" = 1'-0"

SHEET **1** OF 7

13 APRIL 2022



EXISTING REAR 1

PROPOSED REAR 1

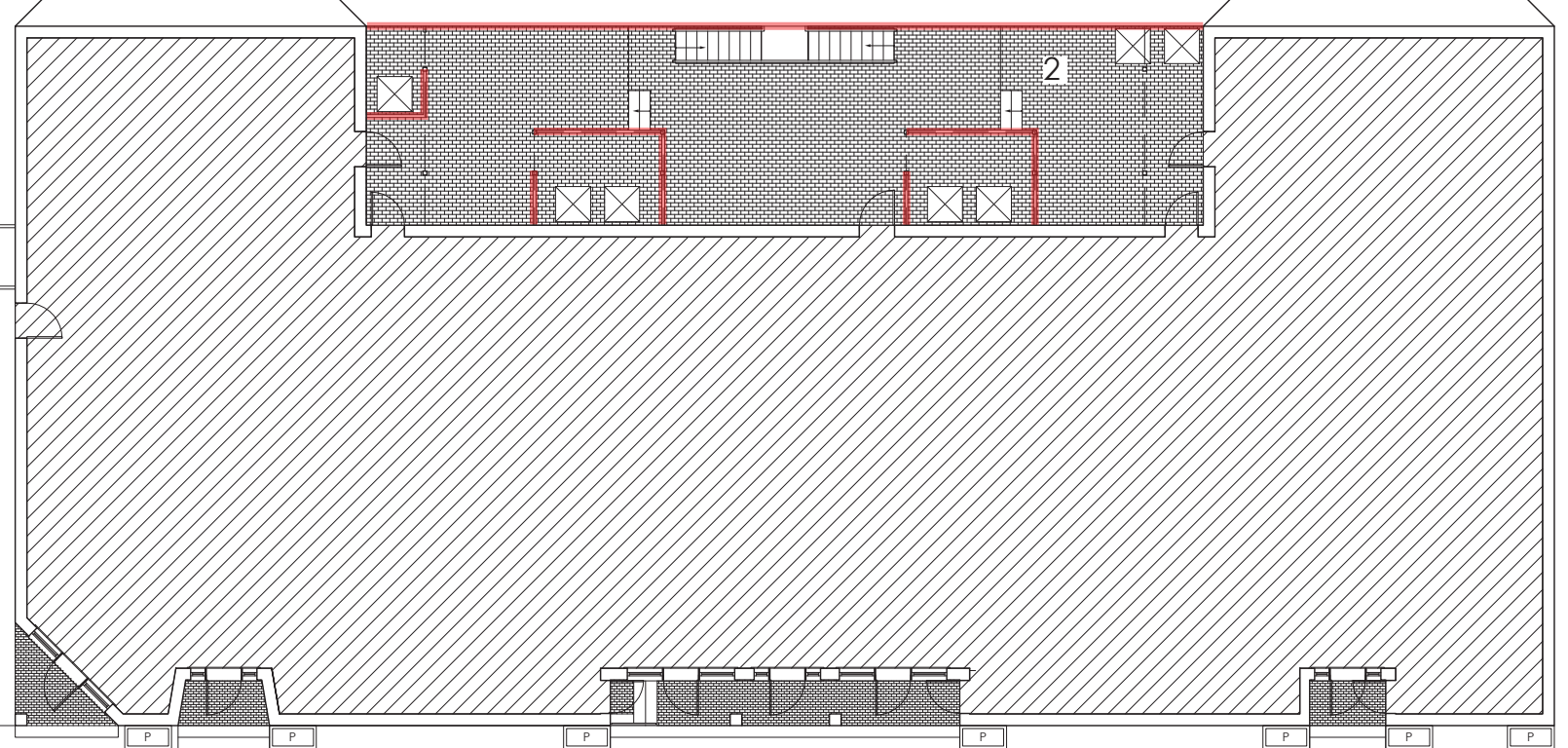
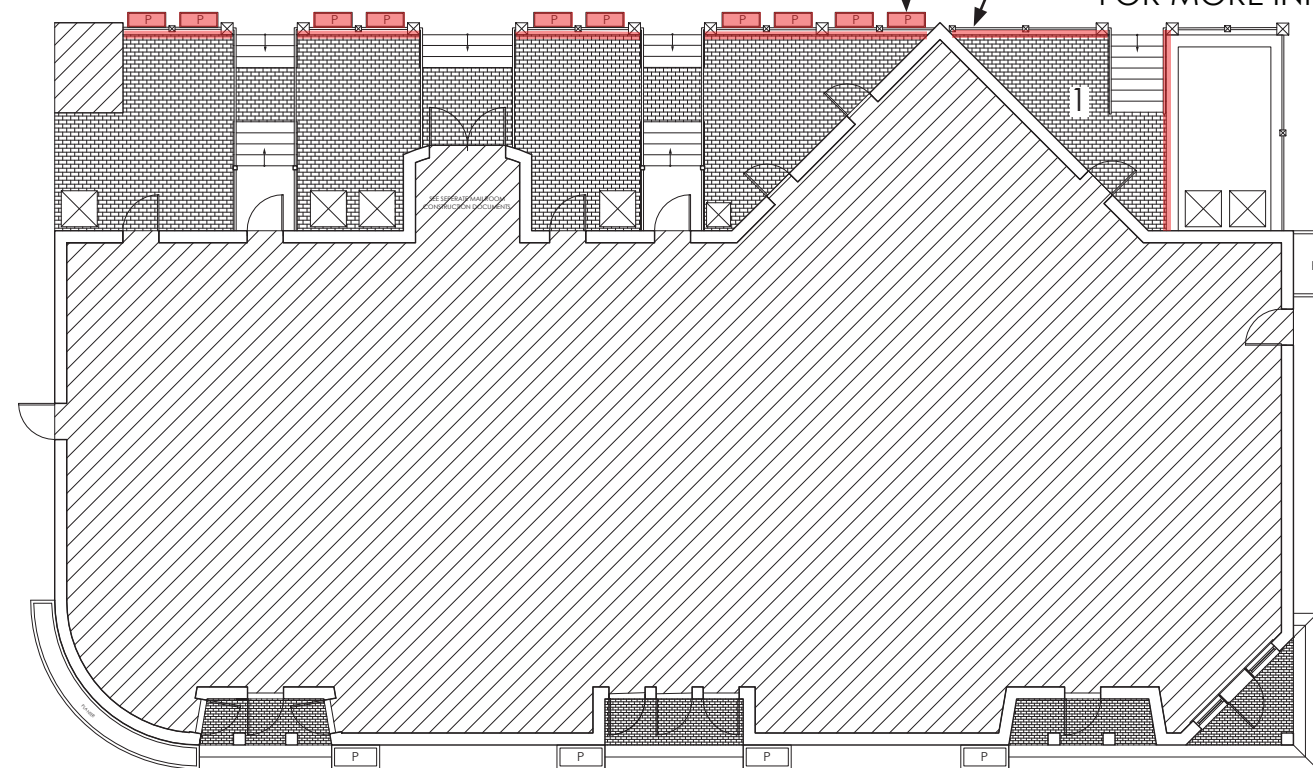
EXISTING REAR 2

PROPOSED REAR 2

PLANTERS SEE SPECIFICATIONS SHEET FOR MORE INFO

COMPOSITE SCREENING:
Timbertech Azek 1x6
SEE SPECIFICATIONS SHEET
FOR MORE INFO

COLUMN WRAP: White Azek to match existing
TRIM: White Azek with concealed plugs and fasteners to match existing



LEGEND

EXTENT OF WORK

BUILDING B FIRST FLOOR PLAN

BUILDING A FIRST FLOOR PLAN

PROPOSED RENOVATIONS FOR

MARKET WHARF CONDOMINIUMS

33 & 59 DEER ST
PORTSMOUTH, NH

SCREEN & WALL COVERING FIRST FLOOR PLAN

1/16" = 1'-0"

SHEET **2** OF 7

13 APRIL 2022

22002

D|M|A
DESTEFANO
MAUGEL
ARCHITECTS

© 2022



EXISTING REAR 1



PROPOSED REAR 1

OUTDOOR CEILING: TimberTech DrySpace to match existing

OUTDOOR CEILING: 1x6 Timbertech Azek Ceiling with 1/4" ventilation gap to match existing
SEE SPECIFICATION SHEET FOR MORE INFO



EXISTING REAR 2

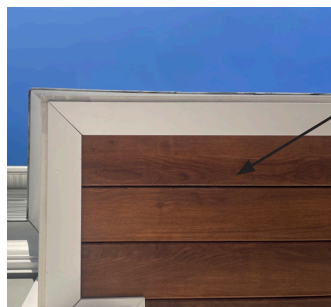


PROPOSED REAR 2

EXISTING EXAMPLES ON SITE

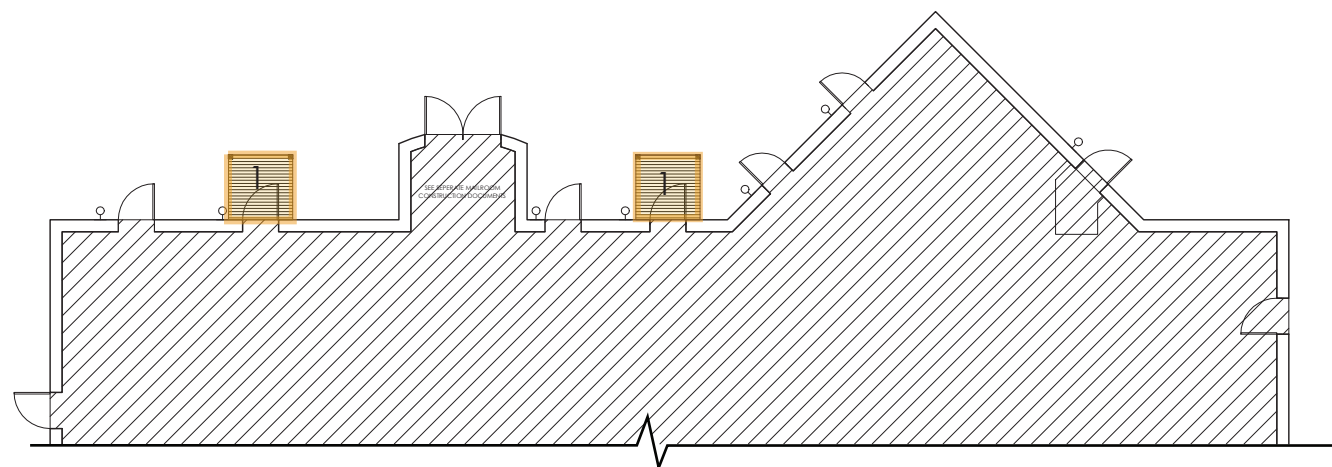


MATERIAL



TRIM

TRIM: White Azek with concealed plugs and fasteners to match existing



BUILDING B FIRST FLOOR PLAN

LEGEND

TimberTech Azek TimberTech DrySpace

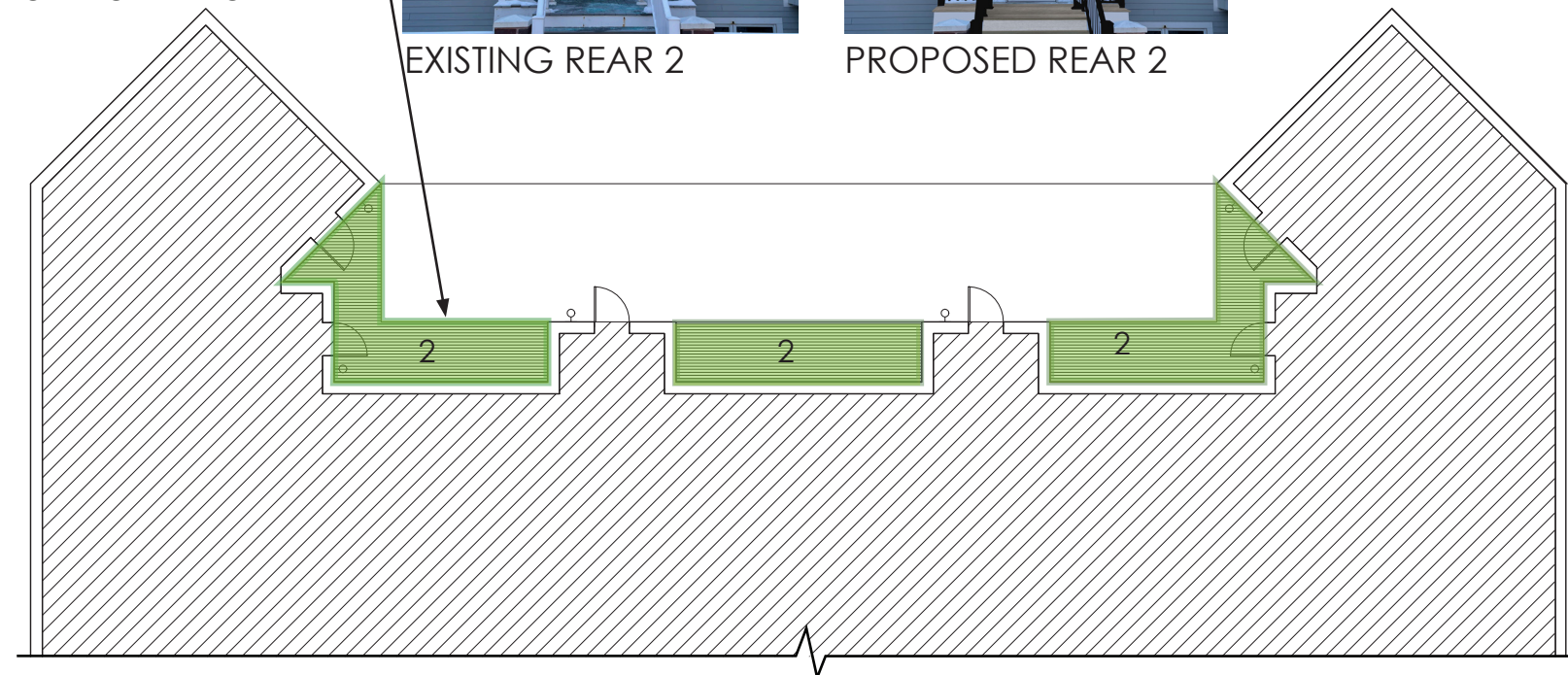
PROPOSED RENOVATIONS FOR

MARKET WHARF CONDOMINIUMS

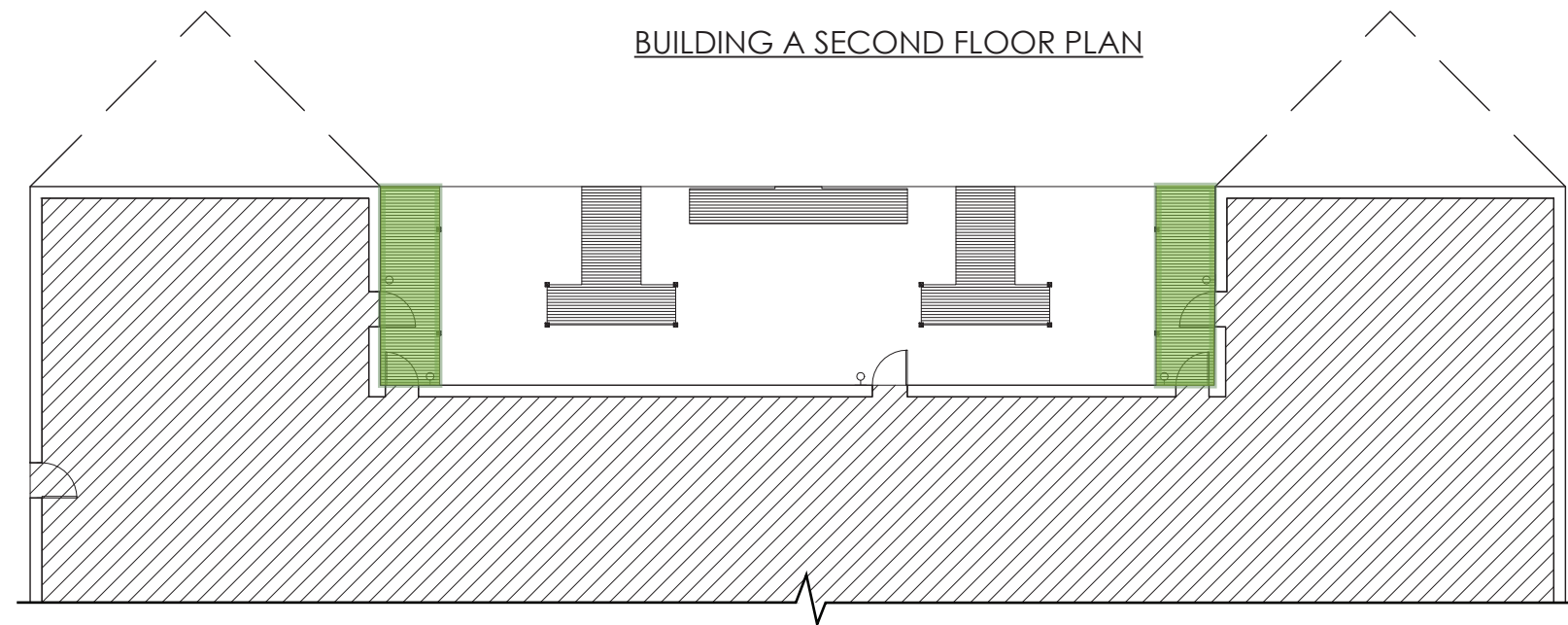
33 & 59 DEER ST
PORTSMOUTH, NH

OUTDOOR CEILINGS

1/16" = 1'-0"



BUILDING A SECOND FLOOR PLAN



BUILDING A FIRST FLOOR PLAN

SHEET **3** OF 7

13 APRIL 2022

22002



© 2022

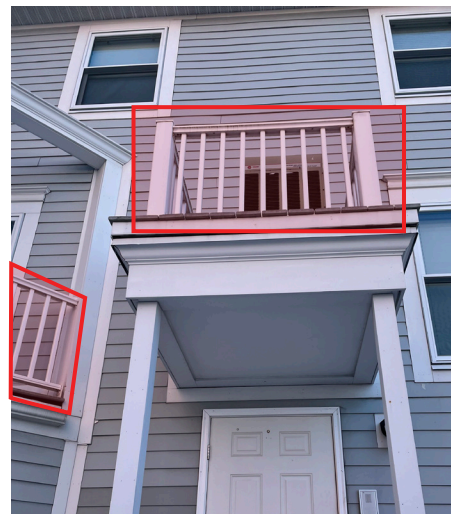


EXISTING FRONT 1



PROPOSED FRONT 1

4x4 corner posts at front balconies, finish to match existing



EXISTING REAR 2



PROPOSED REAR 2



EXISTING REAR 3



PROPOSED REAR 3

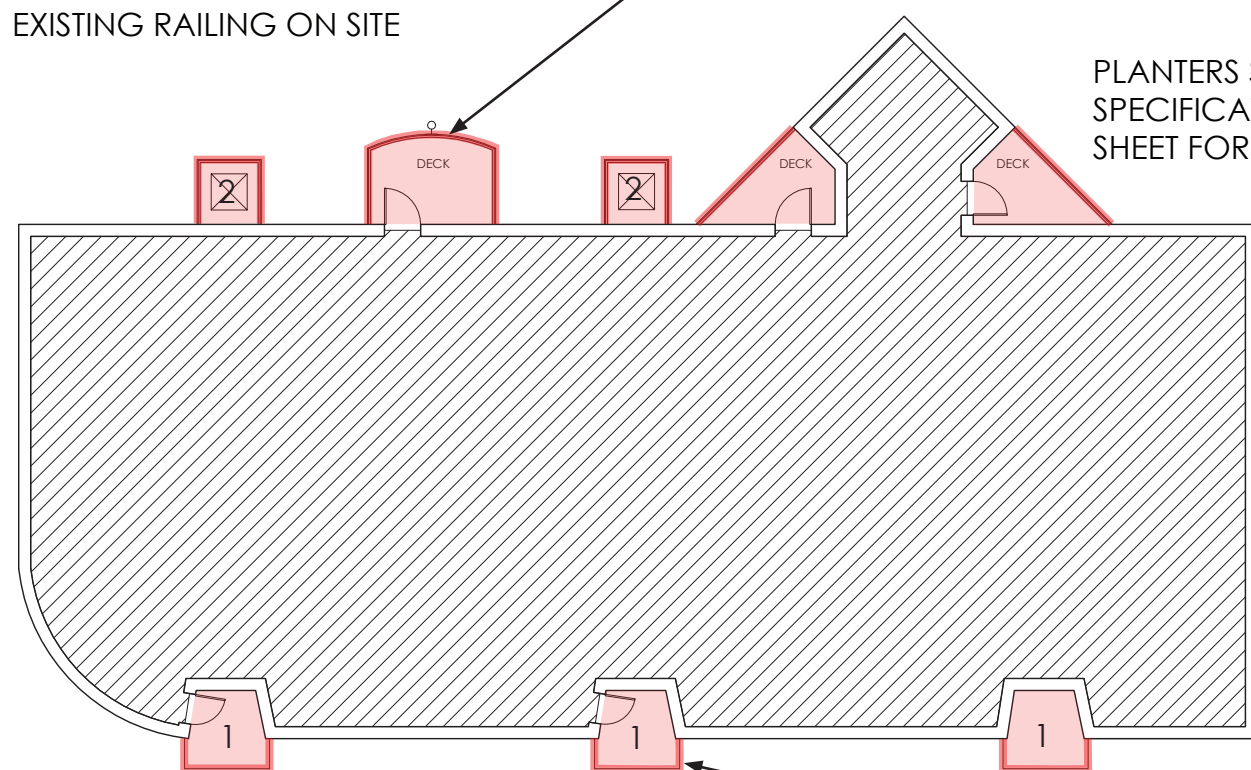


EXISTING RAILING ON SITE

RAILING: Regal Ideas aluminum
SEE SPECIFICATION SHEET FOR MORE INFO

DECKING & TREADS: Timbertech Azek Composite Decking
RISERS: Timbertech Azek Composite Screening
SEE SPECIFICATION SHEET FOR MORE INFO

PLANTERS SEE SPECIFICATIONS SHEET FOR MORE INFO

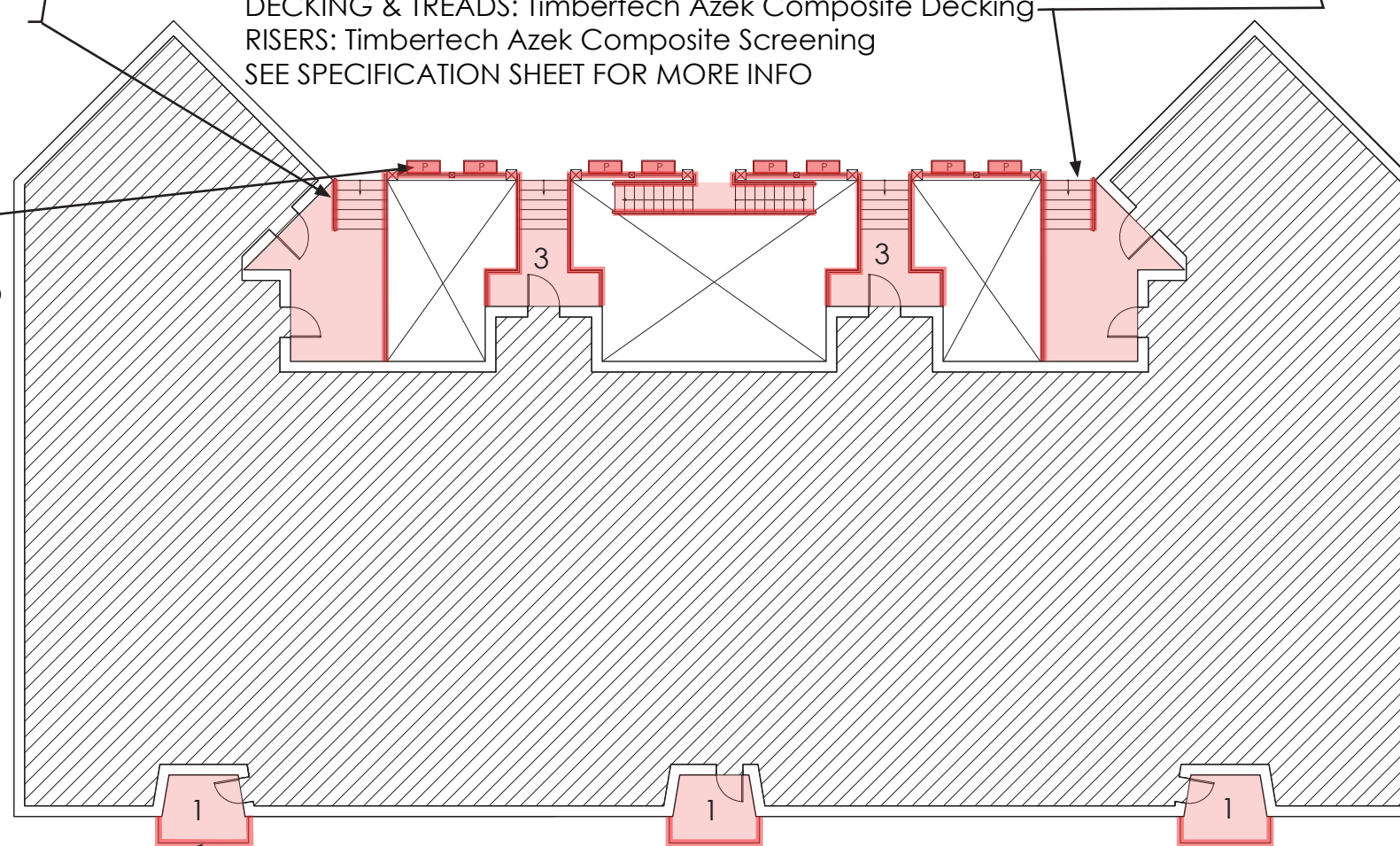


LEGEND

EXTENT OF WORK

RAILING FRONT: Regal Ideas aluminum
SEE SPECIFICATION SHEET FOR MORE INFO

BUILDING B SECOND FLOOR PLAN



BUILDING A SECOND FLOOR PLAN

PROPOSED RENOVATIONS FOR

MARKET WHARF CONDOMINIUMS

33 & 59 DEER ST
PORTSMOUTH, NH

BALCONY RAILING & STAIRWAY SECOND FLOOR PLAN

1/16" = 1'-0"

SHEET **4** OF 7

13 APRIL 2022

22002

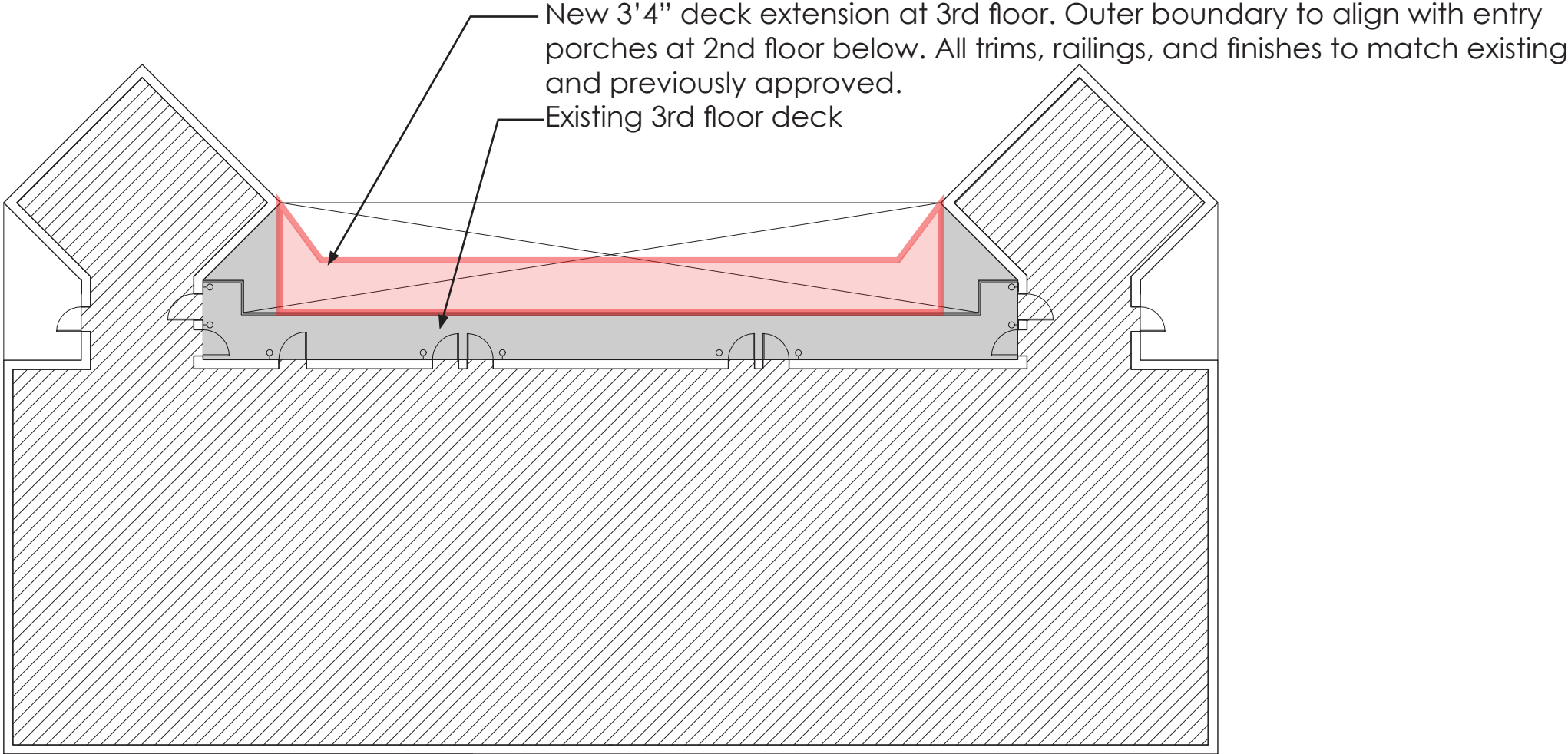


© 2022

BUILDING A REAR EXISTING



BUILDING A REAR PROPOSED



LEGEND

 EXTENT OF WORK

PROPOSD RENOVATIONS FOR

MARKET WHARF CONDOMINIUMS

33 & 59 DEER ST
PORTSMOUTH, NH

BUILDING A THIRD FLOOR PLAN

3RD FLOOR DECK ADDITION

1/16" = 1'-0"

SHEET **5** OF 7

13 APRIL 2022

22002

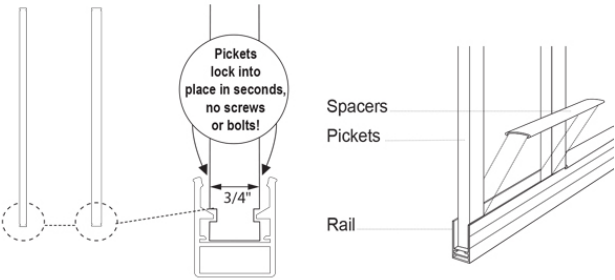


RAILING



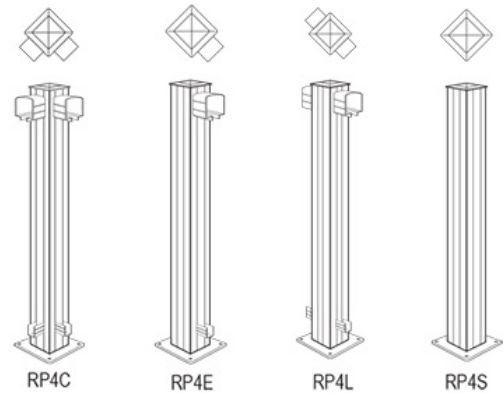
42 inch Picket Details:

- SP6: Straight Pickets for 6' o/c
- 3/4" pickets (14/pkg), Includes 30 aluminum 4" spacers
- SP8: Straight Pickets for 8' o/c
- 3/4" pickets (19/pkg), Includes 40 aluminum 4" spacers
- SP10: Straight Pickets for 10' o/c
- 3/4" pickets (24/pkg), Includes 50 aluminum 4" spacers
- SP56: Stair Straight Pickets for 6' o/c
- 3/4" pickets (12/pkg), Includes 26 aluminum 5" spacers
- WP3: Wide Pickets (covers 3ft with spacers)
- 1 9/16" pickets (6/pkg), Includes 14 aluminum 4" spacers
 - 1 package covers 3 linear feet.
- WPS3: Stair Wide Pickets (covers 3ft with spacers)
- 1 9/16" pickets (6/pkg), Includes 14 aluminum 5" spacers
 - 1 package covers 3 linear feet
- ** O/C = "On Center" measurement



Regal Ideas Aluminum
Picket System Options: Wide, Narrow, Decorative
Finish: (BL) and (OW)

CORNER POSTS



Regal Ideas Aluminum
42" 4" X 4" Aluminum Posts
Finish: (BL) and (OW)

4x4 inch Post Description:

- RP4C: Corner Post (4" x 4" x 42"H)
- Welded brackets at 90° to connect rails to posts
- RP4E: End Post (4" x 4" x 42"H)
- Welded brackets to connect rails to posts
- RP4L: Line Post (4" x 4" x 42"H)
- Welded brackets to connect rails to posts
- RP4S: Stair Post (4" x 4" x 42"H)
- For use with angle bracket or post bracket in stair, angle or custom

Note: Fasteners sold separately

Decorative Post Caps
Snap on aluminum cap to replace standard cap

- Ball Post Cap (DPC-B)
- Pyramid Post Cap (DPC-P)
- Tower Post Cap (DPC-T)

Base Plate Cover

- 2 1/4" Post Base Plate Cover
- Two piece cast aluminum base plate cover
- Wraps post base to hide fasteners and provide a finished appearance

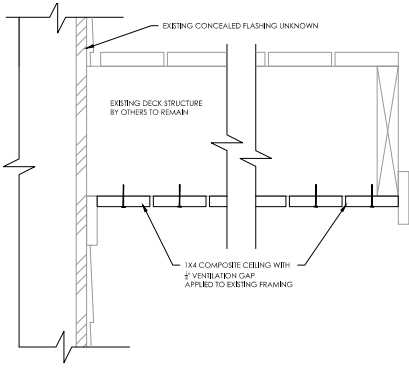
Sidemount Corner Post Bracket

- For Outside Corner fascia applications
- Fasteners sold separately

Sidemount Post Bracket

- Fascia mount bracket for End Post, Line Post, Stair Post or Inside Corner Post
- Fasteners sold separately

EXTERIOR CEILING



CEILING INSTALL DETAIL TYP.

Timbertech Edge Prime + Collection
Azek Ceiling 1x6 with 1/4" ventilation gap
Finish: Coconut Husk
Deck Boards: Actual dimensions: 5.36" x 0.94"
Lengths available: Square-Shoulder 16' and 20' or Grooved 12', 16', and 20'

SCREENING & RISERS

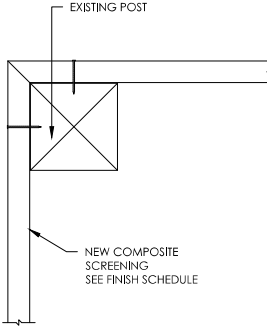


Timbertech Azek Landmark Collection
Deck Boards: Actual dimensions: 5.5" x 1"
Fascia Boards: Actual dimensions: .5" x 11.75" (For Risers)
Finish: French White Oak

DECKING & TREADS



Timbertech Azek Landmark Collection
Actual dimensions: 5.5" x 1"
Finish: Castle Gate



SCREENING PLAN DETAIL

PROPOSD RENOVATIONS FOR

MARKET WHARF CONDOMINIUMS

33 & 59 DEER ST
PORTSMOUTH, NH

SPECIFICATIONS

SHEET 6 OF 7

13 APRIL 2022

22002

D|M|A

DESTEFANO MAUGEL ARCHITECTS

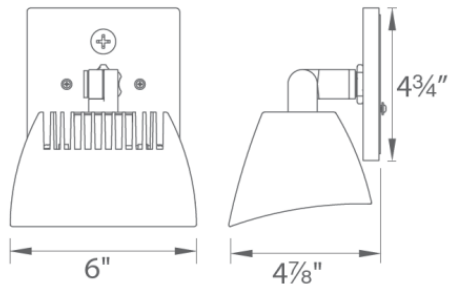
LIGHTING - Replace types at existing locations



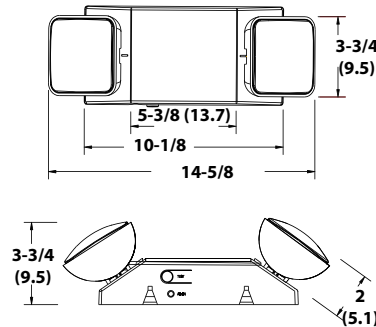
Kirchler - Stonebrook Wall Sconce
Product # 49257AZ
Finish: Architectural Bronze



WAC Lighting - Endurance Flood Light
Product # WP-LED335-30aWT
Finish: Architectural Bronze
Dimensions 6x4x4.75



Lithonia Lighting- Emergency Light Fixture
Product # ELM 2 LED
Finish: White

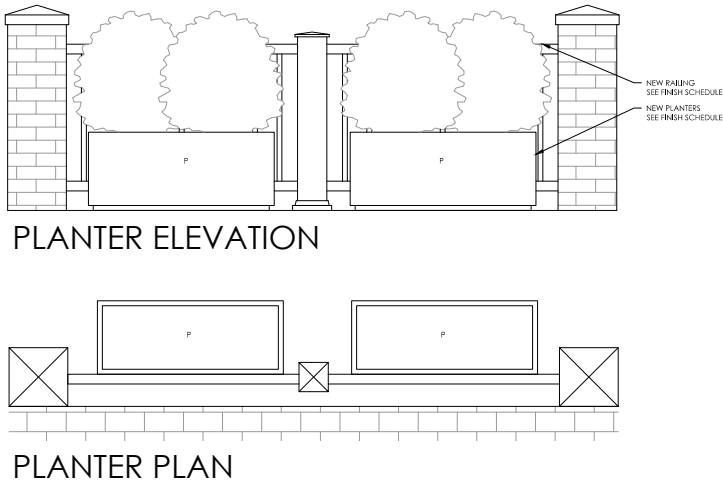


Weight (shipping): 1.7 lbs. (0.77 kgs.)
All dimensions are inches (centimeters) unless otherwise indicated.

PLANTERS



Veradeck Metallic Series
38" Planter
Product # 859600VS
Finish: Black



TIMBERTECH DRYSPACE



TimberTech DrySpace
16" on-center spans in 12' and 16' lengths
Finish: White

PROPOSD RENOVATIONS FOR

MARKET WHARF CONDOMINIUMS

33 & 59 DEER ST
PORTSMOUTH, NH

SPECIFICATIONS

OPTION A
SHEET 7 OF 7

13 APRIL 2022

22002

D|M|A

DESTEFANO

MAUGEL

ARCHITECTS