

Portsmouth
Parking & Traffic Safety Committee
8:00 A.M. – June 2, 2016
City Hall – Eileen Dondero Foley City Council Chambers

ON-SITE COMMITTEE: There will be no site visit this month.

AGENDA

- I. CALL TO ORDER**
- II. ROLL CALL**
- III. ACCEPTANCE OF THE MINUTES**
- IV. FINANCIAL REPORT**
- V. PUBLIC COMMENT (15 MINUTES)**
- VI. PRESENTATIONS**
 - A. Chestnut Street Streetscape Improvement project by The Music Hall
 - B. Peirce Island Road bridge deck repair project
- VII. NEW BUSINESS:**
 - A. Valet parking license renewals, Atlantic Parking Services – 3 locations. **Sample motion – move to approve requests to renew valet parking licenses.**
 - B. Valet parking license renewals, The One Hundred Club. **Sample motion – move to approve request to renew valet parking license.**
- VIII. OLD BUSINESS/ACTION ITEMS:**
 - A. Moped, motorcycle and scooter parking. Report back on request from Marc Stettner to revise rules regarding enforcement. **Sample motion – move to approve recommended ordinance to allow moped parking on sidewalks.**
- IX. PUBLIC COMMENT**
- X. INFORMATIONAL**
 - A. 2016 Parking Utilization study data collection begins June 2nd
 - B. PS21 “Islington Street Lab” implementation update
 - C. Proposed Neighborhood Traffic Calming program

ADJOURNMENT

Unaudited

Percentage of Fiscal Year Complete 83.33%
--

Totals Thru
April 30, 2016

FY 16

Parking Meter Fees
 Parking Meter Space Rentals
 Meter In Vehicle
 Parking Garage Revenue
 Garage Passes
 Parking Validation
 Pass Reinstatement
 Vaughan St Parking Facility

 Parking Violations
 Immobilization Administration Fee
 Summons Admin Fee

 Total FY 16 Parking

FY 16 to Date:		
TOTALS	BUDGETED	% of Budget
1,902,833	1,765,500	108%
94,905	50,000	190%
80,477	50,000	161%
1,715,469	1,850,000	93%
885,875	1,000,000	89%
11,150	10,000	112%
2,565	2,000	128%
13,750	15,000	92%
637,892	700,000	91%
19,435	12,000	162%
200	5,000	4%
5,364,550	5,459,500	98%

FY 16 BUDGETED

	(3,047,195.00)	Transfer to Parking Fund
	2,412,305.00	Funds Remaining in Gen Fund
	5,459,500.00	Total Revenue

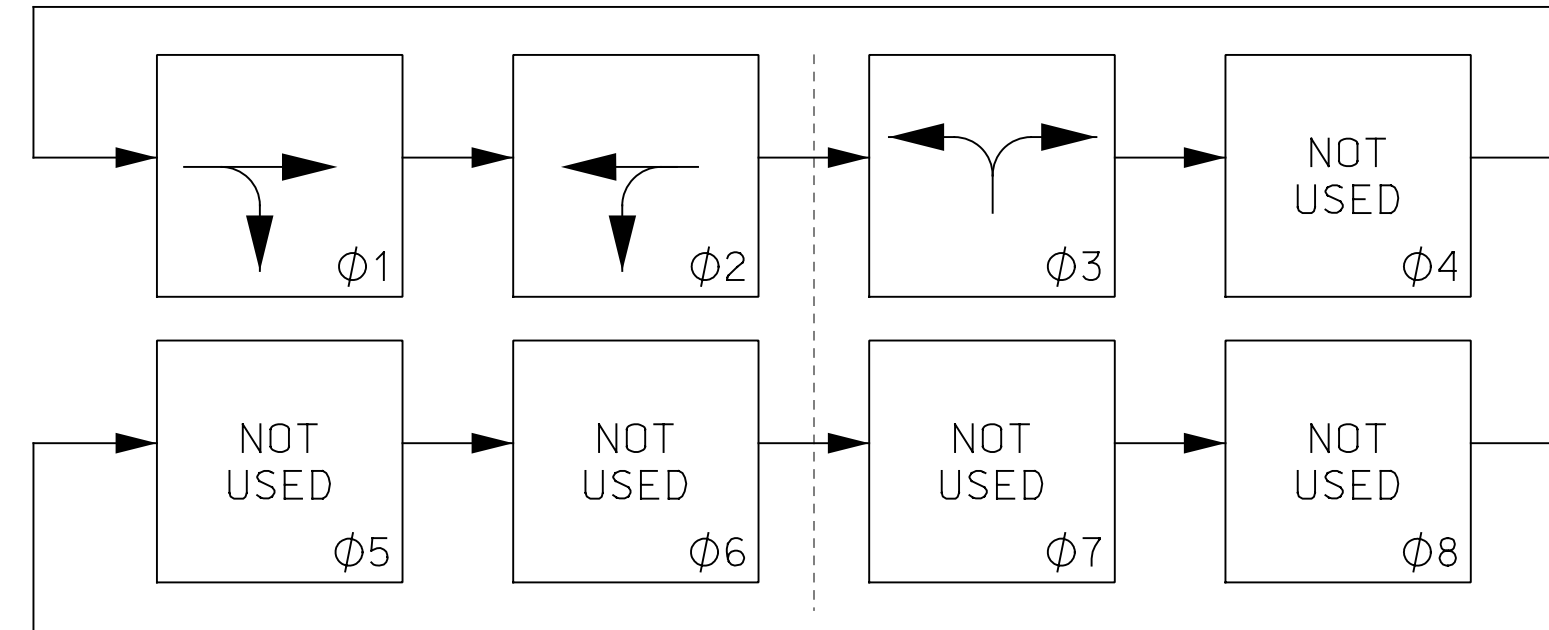
VI.A. Chestnut Street Streetscape Improvement project by The Music Hall



TRAFFIC CONTROL NOTES

1. TRAFFIC CONTROL DEVICES SHALL CONFORM TO SECTION 619 OF THE NHDOT STANDARD SPECIFICATIONS, AND THE 2009 MANUAL ON UNIFORM TRAFFIC CONTROL DEVICES (MUTCD), AS PUBLISHED BY THE U.S. DEPARTMENT OF TRANSPORTATION (USDOT) AND ADOPTED BY THE COMMISSIONER OF THE NEW HAMPSHIRE DEPARTMENT OF TRANSPORTATION. SIGNS SHALL ALSO CONFORM TO USDOT STANDARD HIGHWAY SIGNS AND NHDOT CONSTRUCTION SIGN STANDARDS.
2. THE CONTRACTOR SHALL BE RESPONSIBLE FOR SUPPLYING, ERECTING AND MAINTAINING PERMANENT CONSTRUCTION SIGNS AND WARNING DEVICES AS LISTED ON THE PLANS, AND SHALL ALSO BE RESPONSIBLE FOR SUPPLYING, ERECTING AND MAINTAINING ALL OPERATIONAL SIGNS AND WARNING DEVICES FOR THE PLANNED METHODS OF OPERATION IN CONFORMANCE WITH THE MUTCD.
3. THE CONTRACTOR SHALL MARK ALL HAZARDS WITHIN THE LIMITS OF THE PROJECT AND CONNECTING ROADS WITH WELL MAINTAINED SIGNS AND WARNING DEVICES. ALL SIGNS AND WARNING DEVICES SHALL BE MOVED, SUPPLEMENTED, CHANGED, OR REMOVED DURING THE PROGRESS OF THE CONSTRUCTION AS NEEDED.
4. TRAFFIC CONTROL DEVICES SHALL BE REMOVED, AND SIGNS SHALL BE COVERED OR REMOVED, WHEN THEY NO LONGER APPLY TO THE EXISTING CONDITIONS.
5. PLYWOOD SUBSTRATE FOR CONSTRUCTION SIGNS SHALL CONFORM TO SECTION 619. AND FLAT ALUMINUM SHEETS SHALL CONFORM TO SECTION 615 OF THE NHDOT STANDARD SPECIFICATIONS.
6. DETOURS INVOLVING THE ROUTING OF TRAFFIC OVER ROADS OUTSIDE THE LIMITS OF THE PROJECT SHALL BE MARKED AND MAINTAINED BY THE CONTRACTOR (UNLESS OTHERWISE NOTED). THE CONTRACTOR SHALL BE REQUIRED TO ERECT AND MAINTAIN ANY REQUIRED SIGNS AND WARNING DEVICES AT THE BEGINNING AND END OF THE WORK AND AT INTERSECTING ROADWAYS. THE LOCATION AND POSITION OF THESE SIGNS AND WARNING DEVICES SHALL BE AS APPROVED BY THE ENGINEER. THE CONTRACTOR MAY ALSO BE REQUIRED TO UNCOVER, COVER AND OTHERWISE MAINTAIN DETOUR SIGNS SUPPLIED BY OTHERS.
7. WORK ON THE PROJECT, OR ANY SEPARATE ACTIVITY THEREIN, SHALL NOT START UNTIL ALL THE REQUIRED SIGNS AND WARNING DEVICES ARE INSTALLED AND APPROVED BY THE ENGINEER.
8. SIGN LOCATIONS SHOWN ON THESE STANDARDS ARE RECOMMENDED AND MAY BE ADJUSTED AS DETERMINED BY THE ENGINEER. TYPICAL LAYOUTS SHOWN ARE NOT TO SCALE.
9. THE CONTRACTOR SHALL BE REQUIRED TO PROVIDE THE ENGINEER WITH CERTIFICATION THAT ALL THE SIGNS AND WARNING DEVICES USED ON THE PROJECT MEET THE SPECIFICATIONS.
10. THE USE OF CONSTRUCTION SIGNS AND WARNING DEVICES NOT SHOWN ON THESE STANDARDS OR MUTCD, UNLESS APPROVED BY THE ENGINEER, SHALL BE PROHIBITED.
11. ALL COSTS FOR TRAFFIC CONTROL DEVICES, INCLUDING PLACEMENT, RELOCATION AND REMOVAL OF SIGNS SHALL BE INCLUDED IN ITEM 619.1, MAINTENANCE OF TRAFFIC.
12. THE CONTRACTOR SHALL MAINTAIN SAFE, CONTINUOUS ACCESS TO ALL PROPERTIES ADJACENT TO THE PROJECT LOCATION.

NEMA STD 8Φ CONTROLLER

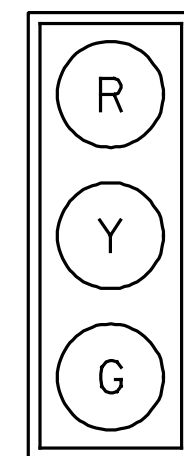


SIGNAL PHASING			
	Φ1	Φ2	Φ3
TIMING IN SECONDS	↖	↗	↔
INITIAL INTERVAL	8	8	5
VEHICLE EXTENSION	3	3	3
MAX. I *	20	10	5
MAX. II *	10	45	5
YELLOW	4	4	4
ALL RED	22	22	22
RECALL	OFF	OFF	OFF
DETECTOR MEMORY	L	L	L
FLASH	RED	RED	RED

* MAX. I = 0600 TO 1200
 * MAX. II = 1200 TO 0600

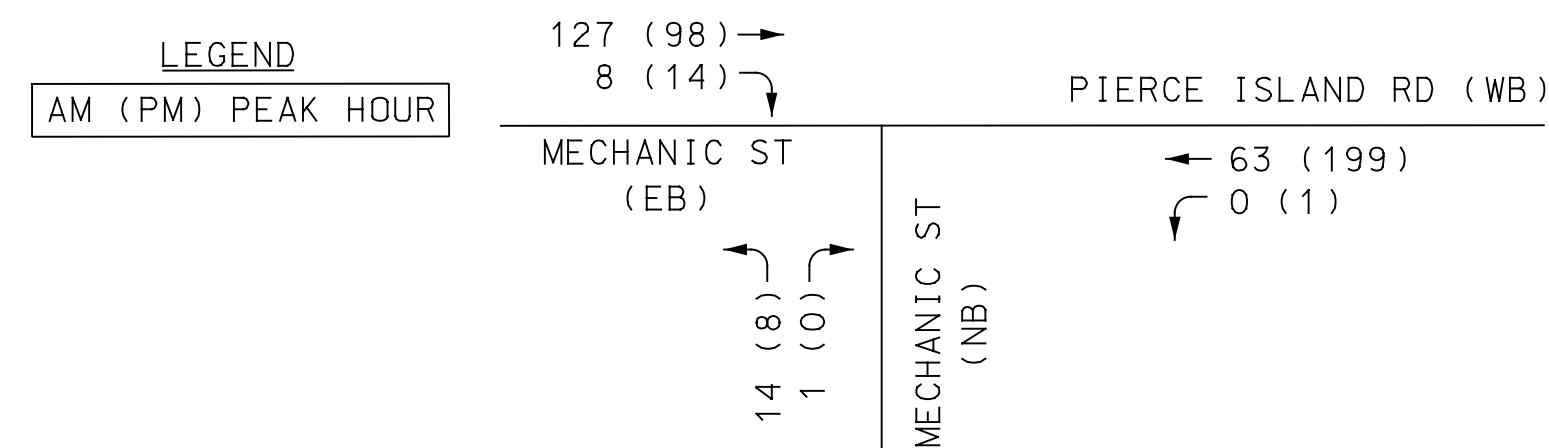
SIGNAL HEADS

ALL LENSES ARE 12" LED WITH 5" LOUVERED BACK PLATE



1, 2, 3

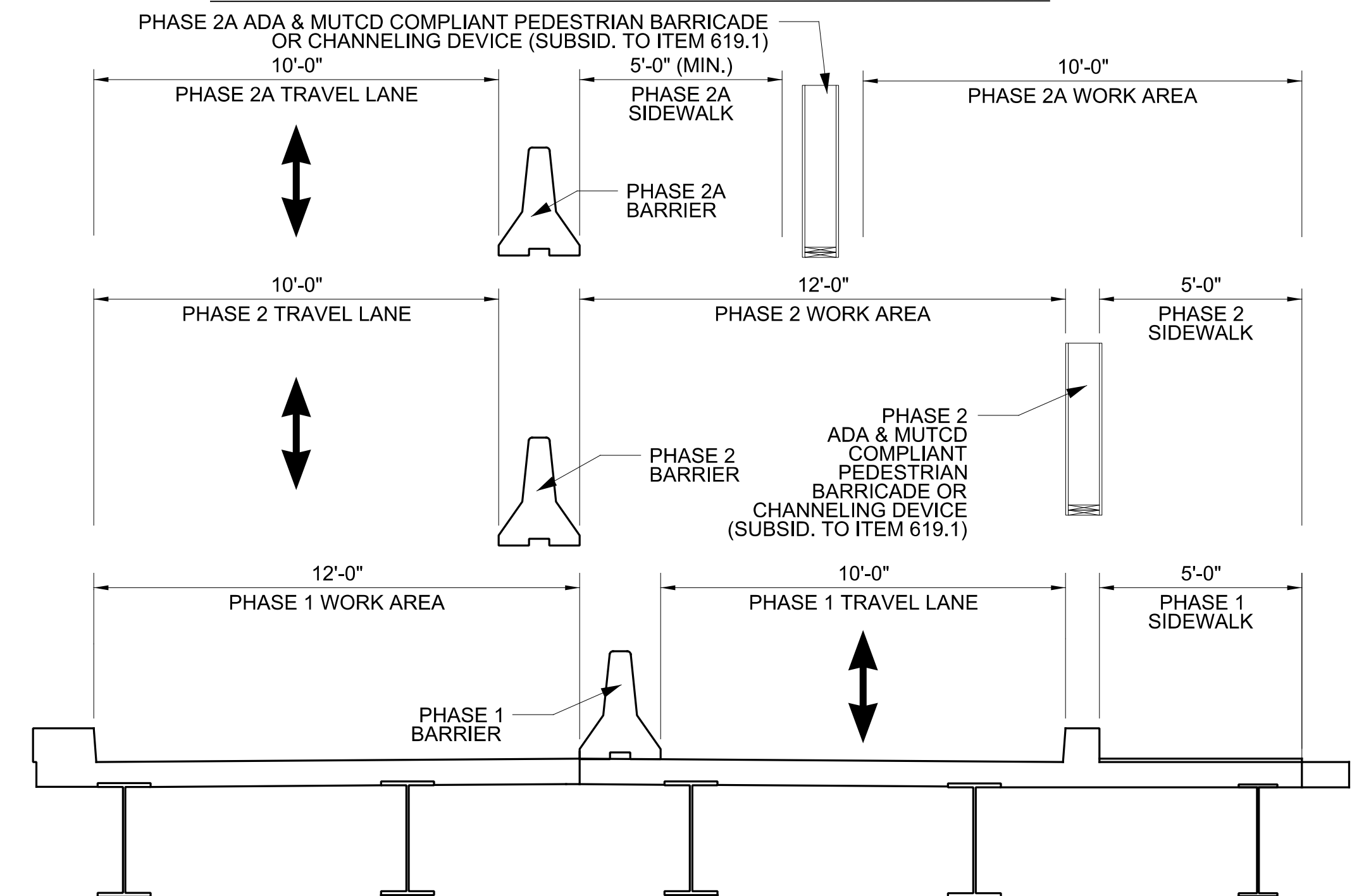
AM, PM PEAK TRAFFIC VOLUMES



CONSTRUCTION SIGNS AND WARNING DEVICES (ITEM 619.1)

TYPE	DESCRIPTION	SIZE WxH	SO. FT.	NO REQ.	TOTAL AREA	POST	COLOR
G20-2	END ROAD WORK	36" x 18"	4.5	2	9	1 POST PER SIGN	B/O
R10-6	STOP HERE ON RED	24" x 36"	6	3	18	1 POST PER SIGN	B/W
R10-7a	DO NOT BLOCK DRIVEWAY	24" x 30"	5	1	5	MOUNT WITH W3-3 ON EAST SIDE OF BRIDGE	B/W
R10-11a	NO TURN ON RED	30" x 36"	7.5	2	15	MOUNT ON TEMPORARY MAST ARM & WITH R10-6	B/W
W3-3	(Traffic Light Symbol)	36" x 36"	9	3	27	1 POST PER SIGN	B/O
W20-1a	ROAD WORK AHEAD	36" x 36"	9	3	27	1 POST PER SIGN	B/O
W20-4	ONE LANE ROAD AHEAD	36" x 36"	9	3	27	1 POST PER SIGN	B/O

TYPICAL SECTION- FACING WEST



REV	DESCRIPTION	DATE
APRIL 2016	DESIGN BY: AGB	
	DRAWN BY: JFMS	
	CHKD. BY: SBH	
	SCALE: AS SHOWN	

Hoyle, Tanner & Associates, Inc.
 100 International Drive - Suite 360
 Portsmouth, NH 03801
 Tel (603) 431-2520 · Fax (603) 431-9067
 www.foyletanner.com

CITY OF PORTSMOUTH
 PORTSMOUTH, NEW HAMPSHIRE
 PEIRCE ISLAND BRIDGE OVER LITTLE HARBOR
 CONSTRUCTION PHASING AND SIGNALIZATION NOTES

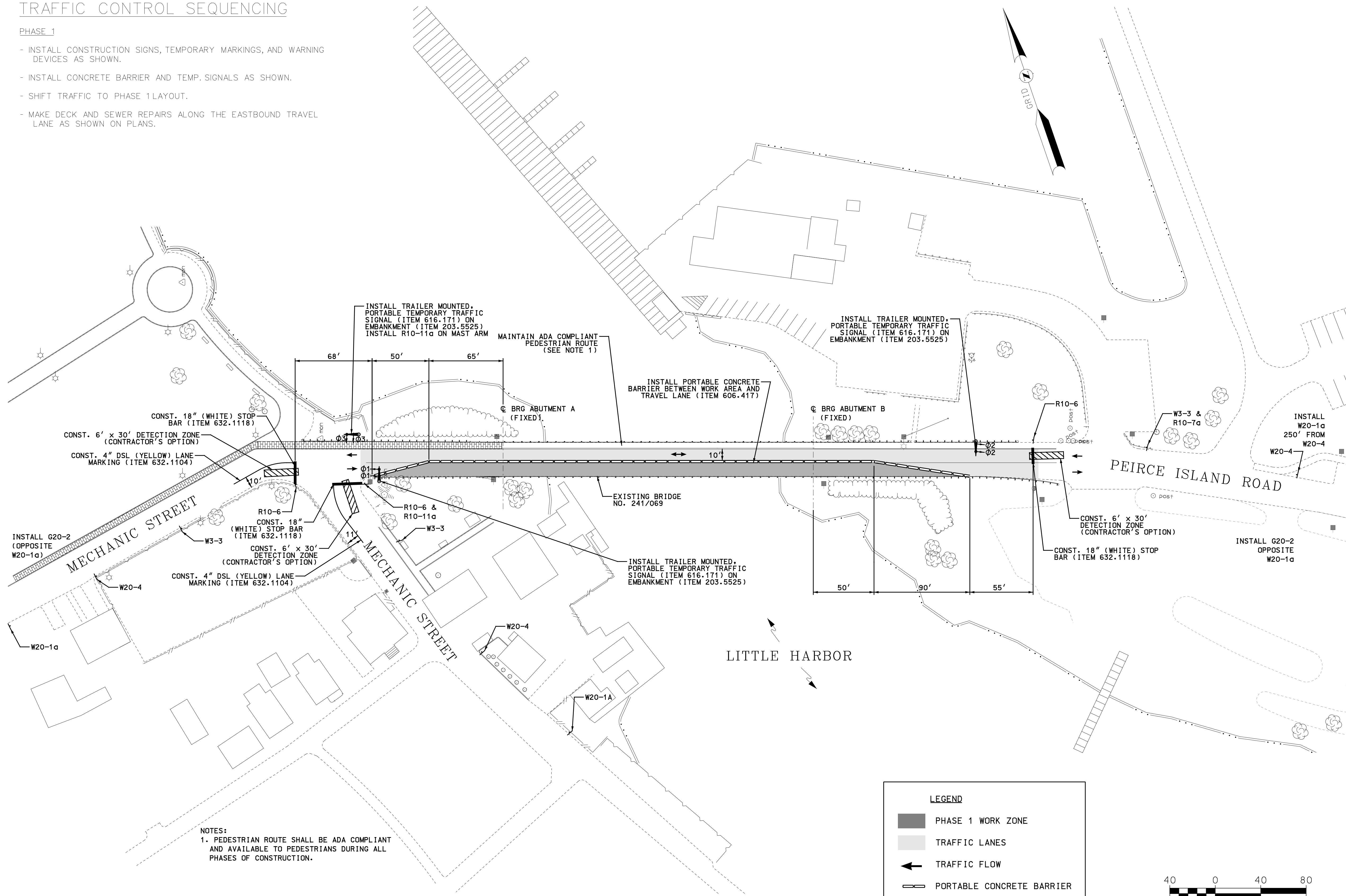
PROJECT NO.:	905105
FILE NAME:	905105trfplans
MODEL NAME:	TCP Notes
SHEET NO.	8
SHEET 8 OF 11	

4/20/2016 4:30:27 PM K:\905105-2-CADD\PIPCutSheet\905105trfplans.dgn

TRAFFIC CONTROL SEQUENCING

PHASE 1

- INSTALL CONSTRUCTION SIGNS, TEMPORARY MARKINGS, AND WARNING DEVICES AS SHOWN.
- INSTALL CONCRETE BARRIER AND TEMP. SIGNALS AS SHOWN.
- SHIFT TRAFFIC TO PHASE 1 LAYOUT.
- MAKE DECK AND SEWER REPAIRS ALONG THE EASTBOUND TRAVEL LANE AS SHOWN ON PLANS.



NOTES:
 1. PEDESTRIAN ROUTE SHALL BE ADA COMPLIANT AND AVAILABLE TO PEDESTRIANS DURING ALL PHASES OF CONSTRUCTION.

LEGEND

- PHASE 1 WORK ZONE
- ▨ TRAFFIC LANES
- ← TRAFFIC FLOW
- ▬ PORTABLE CONCRETE BARRIER



REV	DESCRIPTION	DATE
APRIL 2016	AGB	
	JFMS	
	SBH	
	AS SHOWN	

DESIGN BY: AGB
 DRAWN BY: JFMS
 CHKD. BY: SBH
 SCALE: AS SHOWN

This document is prepared as an instrument of service and shall remain the property of Hoyle, Tanner, Inc. It may not be used, reproduced, disseminated or transferred in any manner, including electronically, for any other purpose than that project, without the written permission of Hoyle, Tanner, Inc.

Hoyle, Tanner & Associates, Inc.
 100 International Drive - Suite 360
 Portsmouth, NH 03801
 Tel (603) 431-2520 · Fax (603) 431-9067
 www.hoyletanner.com

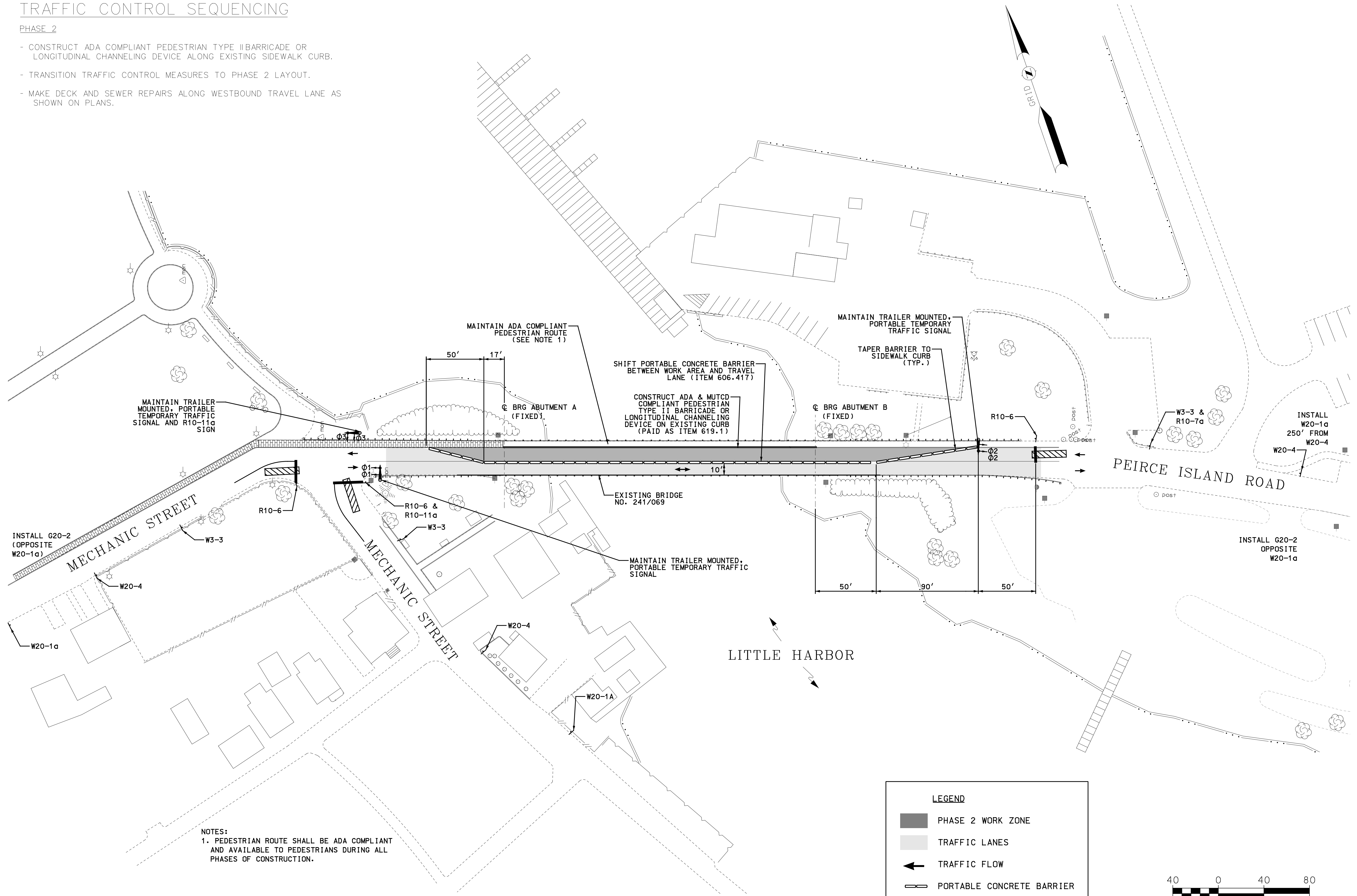
CITY OF PORTSMOUTH
 PORTSMOUTH, NEW HAMPSHIRE
 PEIRCE ISLAND BRIDGE OVER LITTLE HARBOR
 PHASE 1 TRAFFIC CONTROL PLAN

4/20/2016 4:30:28 PM K:\905105\2-CADD\Pln\CutSheet\905105trfplans.dgn

TRAFFIC CONTROL SEQUENCING

PHASE 2

- CONSTRUCT ADA COMPLIANT PEDESTRIAN TYPE II BARRICADE OR LONGITUDINAL CHANNELING DEVICE ALONG EXISTING SIDEWALK CURB.
- TRANSITION TRAFFIC CONTROL MEASURES TO PHASE 2 LAYOUT.
- MAKE DECK AND SEWER REPAIRS ALONG WESTBOUND TRAVEL LANE AS SHOWN ON PLANS.



NOTES:
 1. PEDESTRIAN ROUTE SHALL BE ADA COMPLIANT AND AVAILABLE TO PEDESTRIANS DURING ALL PHASES OF CONSTRUCTION.

LEGEND

- PHASE 2 WORK ZONE
- TRAFFIC LANES
- TRAFFIC FLOW
- PORTABLE CONCRETE BARRIER



REV	DESCRIPTION	DATE
APRIL 2016	DESIGN BY: AGB	
	DRAWN BY: JFMS	
	CHKD. BY: SBH	
	SCALE: AS SHOWN	

Hoyle, Tanner & Associates, Inc.
 100 International Drive - Suite 360
 Portsmouth, NH 03801
 Tel (603) 431-2520 · Fax (603) 431-8067
 www.hoyletanner.com

CITY OF PORTSMOUTH
 PORTSMOUTH, NEW HAMPSHIRE
 PEIRCE ISLAND BRIDGE OVER LITTLE HARBOR
 PHASE 2 TRAFFIC CONTROL PLAN

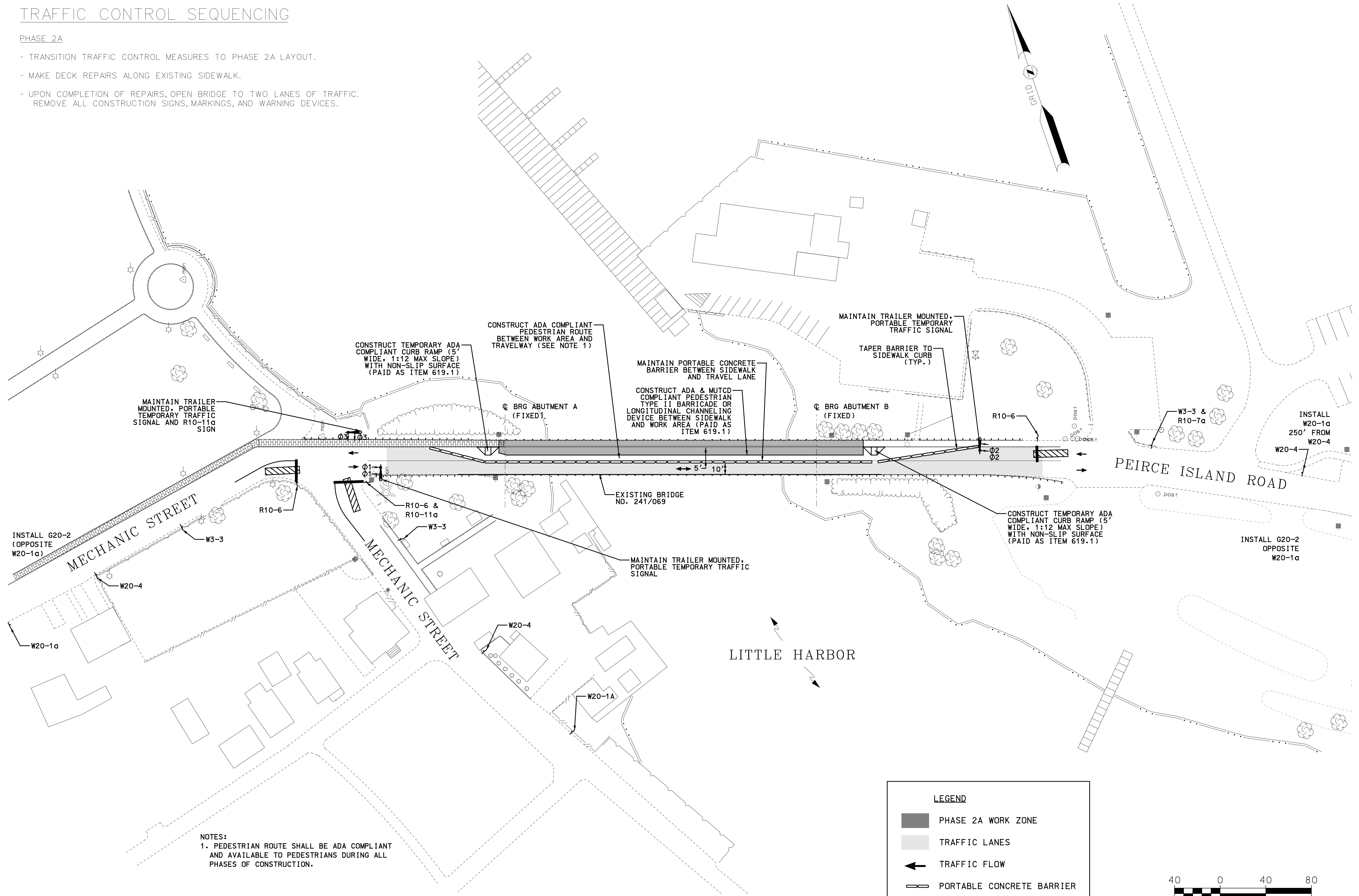
PROJECT NO.:	905105
FILE NAME:	905105trfplans
MODEL NAME:	TCP-Phase 2
SHEET NO.	10
SHEET 10 OF 11	

4/20/2016 4:30:28 PM K:\905105-2-CADD\Pln\CutSheet\905105trfplans.dgn

TRAFFIC CONTROL SEQUENCING

PHASE 2A

- TRANSITION TRAFFIC CONTROL MEASURES TO PHASE 2A LAYOUT.
- MAKE DECK REPAIRS ALONG EXISTING SIDEWALK.
- UPON COMPLETION OF REPAIRS, OPEN BRIDGE TO TWO LANES OF TRAFFIC.
REMOVE ALL CONSTRUCTION SIGNS, MARKINGS, AND WARNING DEVICES.



NOTES:
1. PEDESTRIAN ROUTE SHALL BE ADA COMPLIANT AND AVAILABLE TO PEDESTRIANS DURING ALL PHASES OF CONSTRUCTION.

LEGEND

- PHASE 2A WORK ZONE
- ▨ TRAFFIC LANES
- ← TRAFFIC FLOW
- ▬ PORTABLE CONCRETE BARRIER



REV	DESCRIPTION	DATE
APRIL 2016	DESIGN BY: AGB	
	DRAWN BY: JFMS	
	CHKD. BY: SBH	
	SCALE: AS SHOWN	

Hoyle, Tanner & Associates, Inc.
 100 International Drive - Suite 360
 Portsmouth, NH 03801
 Tel (603) 431-2520 · Fax (603) 431-8067
 www.hoyletanner.com

CITY OF PORTSMOUTH
 PORTSMOUTH, NEW HAMPSHIRE
 PEIRCE ISLAND BRIDGE OVER LITTLE HARBOR
 PHASE 2A TRAFFIC CONTROL PLAN

PROJECT NO.:	905105
FILE NAME:	905105trfplans
MODEL NAME:	TCP-Phase 2A
SHEET NO.	11
SHEET 11 OF 11	

4/20/2016 4:30:23 PM K:\905105-2-CADD\Pln\CutSheet\905105trfplans.dgn

This document is prepared as an instrument of service and shall remain the property of Hoyle, Tanner. It may not be used, reproduced, disseminated or transferred in any manner, including electronically, for any other purpose than that project, without the written permission of Hoyle, Tanner.