

PORTSMOUTH SCHOOL BOARD MINUTES FOR DECEMBER 01, 2009

LITTLE HARBOUR CONFERENCE ROOM

PORTSMOUTH, NH

DATE: TUESDAY, DECEMBER 01, 2009

TIME: 7:00PM [or thereafter]

It is anticipated that the School Board will hold a non meeting, prior to the regularly scheduled meeting at 6:30 p.m., in accordance with RSA 91 – A: 2 (3); in order to seek legal counsel.

I. CALL TO ORDER – Chair Shuldman called the meeting to order at 7:08 p.m.

II. ROLL CALL

Present: MITCH SHULDMAN (CHAIR), SHERI GARRITY (VICE CHAIR), LISA SWEET, LESLIE STEVENS, ANN WALKER, KENT LAPAGE, DEXTER LEGG, PATRICK ELLIS, REBECCA EMERSON, ED MCDONOUGH, (SUPERINTENDENT), STEVE ZADRAVEC (ASSISTANT SUIERINTENDENT), STEPHEN BARTLETT (BUSINESS ADMINISTRATOR), LINDA BRIOLAT (EMPLOYEE REPRESENTATIVE) ANN MAYER (SAU 50 REPRESENTATIVE), AND PHILIP BOYNTON (STUDENT REPRESENTATIVE)

Absent:

III. INVOCATION

IV. PLEDGE OF ALLEGIANCE - Chair Shuldman led in the pledge of allegiance.

V. PUBLIC COMMENTARY SESSION

VI. SUPERINTENDENT’S REPORT

i. ITEMS OF INFORMATION

(1) *TEACHING WITH INTERACTIVE WHITEBOARDS*

(2) CIP FUND REQUEST - CIP Request – Funds have been dedicated for work to be done over December break. This is considered an in house project. Mr. LaPage would like to see hours shown per project by manpower where budgets are going to be scrutinized. This will show a savings of “in house” work being done.

(3) FY11 BUDGET SCHEDULE - Next year’s budget submission date is February 15th. Other city departments have a shorter time frame.

ii. CORRESPONDENCE

(4) HOLIDAY DINNER INVITATION TO NEW BOARD MEMBERS

VII. OLD BUSINESS

i. WORKSHOP SESSION: REDISTRICTING – Mr. McDonough shared a PowerPoint with the Board that clearly depicts an enrollment bubble within all three elementary schools over the next two years. After a lengthy discussion, it was decided that there is a broader, longer-term issue. Current status of our

facilities and what we need going forward needs to be studied further in depth. The short-term issue, which is a bubble, will need to be addressed quickly. Redistricting does not seem to be the answer and should be shelved for now. The district is able to absorb for the next year or two.

MOTION: Motion to put together a committee to look at design capacity, facility assessment and programming of elementary schools by Mr. LaPage.

SECOND: Ms. Sweet

DISCUSSION:

VOTE: Unanimously Approved

- (1) NEW ENGLAND SCHOOL DEVELOPMENT ENROLLMENT COUNCIL PROJECTIONS – Complete projection PowerPoint can be viewed by clicking [here](#).
- (2) ELEMENTARY SCHOOLS ENROLLMENT CAPACITY – Enrollment capacity map attached to minutes as [Attachment 1](#).
- (3) “NO CHILD LEFT BEHIND: REQUIREMENTS FOR SCHOOL CHOICE – Attached to minutes as [Attachment 2](#).

ii. LETTER TO CITY COUNCIL RE: DISCUSSION

VIII. NEW BUSINESS

i. FIRST READING OF THE FOLLOWING POLICIES:

JICDD	VIOLENT ACTS BY STUDENTS TO AND FROM SCHOOL
KHB	ADVERTISING IN THE SCHOOLS
JG	SCHOOL AND GRADE LEVEL ASSIGNMENTS
JICA	STUDENT DRESS
BBAA	COMMITTEE OF THE WHOLE
JICDAA	EMPLOYEE/STUDENT RELATIONS
EBCC	BOMB THREATS
EH	ACCESS TO PUBLIC RECORDS

MOTION: Motion to accept first readings of above listed policies by Mr. LaPage.

SECOND: Ms. Sweet

DISCUSSION:

VOTE: Unanimously Approved

ii. CONSIDERATION AND APPROVAL OF LEAVE OF EMPLOYMENT

(1) REBECCA TUTTLE – KIDS PROGRAM – 1 YEAR POSITION

MOTION: Motion to accept a leave of absence (1 year) for Ms Rebecca Tuttle
by Mr. Legg

SECOND: Mr. LaPage

DISCUSSION:

VOTE: Unanimously Approved

IX. FUTURE AGENDA ITEMS

i. ENTRY PLAN UPDATE (DECEMBER)

ii. KATHY BIRSE-SIEGEL (DECEMBER)

iii. FACILITIES UPDATE (DECEMBER)

iv. STACY KRAMER – COALITION COORDINATOR FOR SEACOAST AREA

v. PLP UPDATE – (DECEMBER OR JANUARY)

Respectfully submitted by:



Mr. Edward McDonough
Superintendent of Schools



2009-10 Enrollment Projections

TO: Edward R. McDonough, Superintendent of Schools, Portsmouth, NH SAU #52
FROM: Donald G. Kennedy, Ed.D., Demographic Specialist
DATE: November 17, 2009
RE: Enrollment Projections

We are pleased to send you the enclosed documents displaying the past, present, and projected enrollments for the Portsmouth School District SAU #52. We have used the figures given to us by the district; data from 1999-00 were not available from the district or from the NH Department of Education. Therefore NESDEC developed the data from the Average Daily Membership report of the NH Department of Education (these data were not used in developing the projections for Portsmouth's future enrollments).

The reader will note that NESDEC has begun to phase-in the PK enrollments into NESDEC reports, K-12 totals will continue to be included as well. There recently has been a gradual increase in PK enrollments across New Hampshire. PK enrollment, over and above the Special Needs population, tends to vary with the spaces and the funds currently available.

The two factors at work which will have the greatest effect upon most future New Hampshire enrollments are: a decline in the number of births to local residents; and b. the possible resumption of in-migration. Neither of these factors is a major issue in Portsmouth...where the enrollments look quite steady. In the decade from 1994-2003, Portsmouth averaged 226 births per year; more recently (and expected over the next 6-7 years) are about 219-226 births annually. That said, there were only 204 births in 2006 to residents of Portsmouth and 203 births in 2007. The ever-changing relationship between Portsmouth births and Kindergarten enrollments is displayed on the B-K graph. Over the past decade, Portsmouth has registered about 71 Kindergarteners for every 100 Portsmouth births (five years previous); in 2009 the ratio rose very slightly to 73 for every 100 births. See the Birth-Kindergarten

chart. These sometimes contradictory bits of data translate to about 141-158 Kindergarteners each year for the next decade (although the 2010 Kindergarten will come from a large birth year and may have 171 students). Grade 1 is expected to be about 7% larger than the previous year's Kindergarten class, although this ratio also varies a bit. Second, like many nearby communities Portsmouth experiences enrollment fluctuations of migration in Grades 1-12: for example, over the past decade there have been 2.5-7% "move-ins" each year...fall 2009 had 5% in-migration in Grades 1-12 overall.

The K-12 enrollment total declined by 64 pupils over the past ten years; it is forecast to shrink by only 28 students over the next decade. Enrollment in Grades K-5 may decrease by 40 students over a decade, Grades 6-8 may decline by 64 students over a ten-year period; and enrollment may increase by 76 students in the high school (as some larger classes now in the elementary grades work their way up through the grades)...all over the next decade.

Will these patterns really last for as long as ten years? Probably not. As soon as the economy and real estate situation improve, even stronger in-migration may return to Portsmouth. The moderate decline in building permits appears in the "Additional Data" chart. There is a direct connection in school districts between the number of new families (moving into either new or turn-over residences) and a rise in school enrollments. Many communities in the area are experiencing only 60-70% as much turnover of real estate as in 2004-07, yet this pattern will change. See the description on Page 4 below regarding "reliability of projections".

If your district has need for further assistance in the area of long range facilities planning, we would urge you to call so that we might discuss our planning services which include our Demographic and Long-Range Enrollment Projection Studies.

We have enclosed suggestions for interpreting the printout and a brief description of the modified cohort survival methodology used in preparing the projections. As always, we would be delighted to hear from you regarding ways in which we might make the enrollment forecasts more useful to you. Please don't hesitate to call or email us at ep@nesdec.org. Best wishes for the school year.

Analyzing Your Enrollment

Historical Public Enrollments

1. After the "YEAR" column can be found the "BIRTHS" column. The number of births to residents for each of eleven years is displayed. Note any trends, e.g., have births been decreasing? increasing? leveling off? Kindergarten and Grade 1 enrollments are normally quite responsive to these fluctuations.
2. Look down the K and 1 columns and note the direction of the trend. This affords a comparison of these classes over a ten-year period. Add the K and Grade 1 enrollments of the first school year recorded, and compare them with the sum of the current K and Grade 1 enrollments.
3. Take the first K class and follow it diagonally to trace its movement to Grade 1, 2, etc. up to its current 10th grade status. This comparison (which can be accomplished for other classes also) gives some measure of the effects of migration in your school district. If a sixth grade class today is larger than it was as a K class six years ago, then in-migration has probably occurred; if it is smaller, then out-migration has probably occurred.
4. Compare each K class with the previous year's graduating class. Note which is larger and by what amount one surpasses the other. Larger graduating classes generally reflect declining enrollments; larger K classes generally indicate increasing enrollments.
5. In the "Grade Combinations" section, note the trends of elementary, middle school/junior high, and high school enrollments. A significant and consistent trend in these summaries usually results in the corresponding trend for projected enrollments. If enrollments are leveling off in the elementary grades after a period of decline, then the secondary enrollments might be expected to continue to decline for several years until the leveling off experience has had time to take hold at the secondary grades.

Enrollment Projections

1. Note the trends exhibited in the total K-12 (or 1-12) projection for the next five years as well as the

projections for various grade combinations. The trends on this page should generally exhibit a continuation of the trends mentioned above for historical enrollments, although the rate of change may be quite different.

2. Look at the births in the most recent years and note whether the trend is up, down, or level.
3. Make similar comparisons as appropriate on this page as were suggested for the "Historical Public Enrollments" page.

PROJECTION METHODOLOGY

The cohort survival technique is the most frequently used method of preparing enrollment forecasts. NESDEC uses that technique, but modifies it in order to move away from forecasts which are wholly computer or formula driven. Such modification permits the incorporation of important, current town-specific information into the generation of the enrollment forecasts. Basically, percentages are calculated from the historical enrollment data to determine a reliable percentage of increase or decrease in enrollment between any two grades. For example, if 100 students enrolled in Grade 1 in 2008-09, increased to 104 students in Grade 2 in 2009-10, the percentage of survival would have been 104% or a ratio of 1.04. Such ratios are calculated between each pair of grades or years in school over several recent years.

After study and analysis of the historical ratios and based upon a reasonable set of assumptions regarding births, migration rates, retention rates, etc., ratios most indicative of future growth patterns are determined for each pair of grades. The ratios thus selected are applied to the present enrollment statistics for a pre-determined number of years. The ratios used are the key factors in the reliability of the projections, given the validity of the data at the starting point. The strength of the ratios lies in the fact that each ratio encompasses collectively the variables that account for increases or decreases in the size of a grade enrollment as it moves on to the next grade. Each ratio represents the cumulative effect of the following factors:

1. Real estate turnover and new residential construction;
2. Migration, in or out, of the schools;
3. Drop-outs, transfers, etc.;
4. Births to residents;
5. Retention in the same grade.

RELIABILITY OF ENROLLMENT PROJECTIONS

Projections can serve as useful guides to school administrators for educational planning. In this regard, the projections are generally most reliable when they are closest in time to the current year. Projections six to ten years out may serve as a guide to future enrollments, and are useful for facility planning purposes. However, they should be viewed as subject to change given the possibility for change in the underlying assumptions/trends.

Projections based upon **the children already in the district** (the current K-12 population only) will be the most reliable; the second level of reliability will be for those children already **born into the community but not yet old enough to be in school**. The least reliable category is the group for which an estimate must be made **to predict the number of births**, thereby adding an additional variable. See these three multi-colored groupings on the “Projected Enrollment” slide/page.

How often do the actual enrollments closely match the NESDEC projections? The research literature reports the closest that enrollment forecasters are likely to come to actual enrollments is about 1% variance per year-from-the-known-data. That is, a 1% variance from projection-to-actual “one-year-out” into the future (2% variance “two-years-out” ... 10% variance “ten-years-out”). NESDEC reaches this “highest possible” standard in about 90% of cases. When our NESDEC variance is greater, the reasons often are one of the following: a. imbedded/intervening “hidden” variables (examples: a parochial school closed or other students returned from non-public schools, a charter school opened, the Kindergarten program changed entrance age or to extended/full-day, the high school toughened its course credit/graduation requirements, the District set new attendance boundaries for elementary schools, or the District had well-publicized budget/referendum difficulties); b. the District size was below 500 students, thus subject to fluctuations; or c. the District has not done enrollment projections on an annual basis.

Annual updates allow for early identification of recent changes in historical trends. When the actual enrollment in a grade is significantly different (high or low) from the projected number, it is important (yet difficult) to determine whether this is a one-year aberration or whether a new trend may be starting. **In light of this, NESDEC urges all school districts to have updated enrollment forecasts developed by NESDEC each October.** This service is available at no cost to affiliated school districts.

Using This Information Electronically

If you would like to extract the information contained in this report for your own documents or presentations, you can use Adobe Acrobat reader to convert the desired information to a “snapshot,” which can be inserted into PowerPoint slides, Word documents, etc. Because the snapshot tool creates a graphic, the image is not editable.

Steps for Using The Snapshot Tool in Adobe Acrobat Reader 8.0:

1. Click on Tools Menu;
2. Choose “Select & Zoom;”
3. Choose “Snapshot Tool;”
4. Click and drag around the text, chart, and/or graphics that you would like to capture: your selection will be copied to the clipboard automatically;
5. Click in the document where you would like the information to appear;*
6. Give Paste command.

If you have an earlier version of Adobe Acrobat and these instructions don't work for you, contact your tech support person, or NESDEC and we will try to assist you. Telephone (508)481-9444 or ep@nesdec.org. Ask for Peggy, Don, or Carol.

*You may paste your snapshot onto a PowerPoint slide, onto an Excel sheet, or even into a graphics program to save as a separate graphic file (in .jpg or other format), so that it is available for inserting into future documents.

Portsmouth, NH Historical Enrollment

School District: **Portsmouth, NH SAU#52**

11/17/09

Historical Enrollment By Grade*																			
Birth Year	Births	School Year	PK	K	1	2	3	4	5	6	7	8	9	10	11	12	UNGR	K-12	PK-12
1994	237	1999-00	58	167	178	173	168	159	172	177	187	266	259	259	263	263	0	2691	2749
1995	248	2000-01	43	169	172	183	178	173	164	177	182	192	271	264	264	268	0	2657	2700
1996	197	2001-02	37	170	179	155	162	188	167	190	181	175	278	267	267	254	0	2633	2670
1997	218	2002-03	31	147	183	181	157	159	178	162	197	191	251	279	250	253	5	2593	2624
1998	213	2003-04	42	167	154	178	181	157	156	170	167	211	294	261	276	268	14	2654	2696
1999	211	2004-05	46	159	172	149	177	187	158	164	171	162	288	304	266	276	0	2633	2679
2000	229	2005-06	12	134	159	167	154	181	186	157	166	165	255	294	285	257	0	2560	2572
2001	245	2006-07	13	178	148	160	168	155	195	175	167	166	268	246	308	287	0	2621	2634
2002	230	2007-08	17	164	196	153	159	172	153	197	173	163	265	292	231	296	0	2614	2631
2003	227	2008-09	15	154	185	183	152	152	166	154	209	178	243	281	284	244	0	2585	2600
2004	249	2009-10	19	180	164	183	184	148	149	168	164	209	282	243	269	284	0	2627	2646

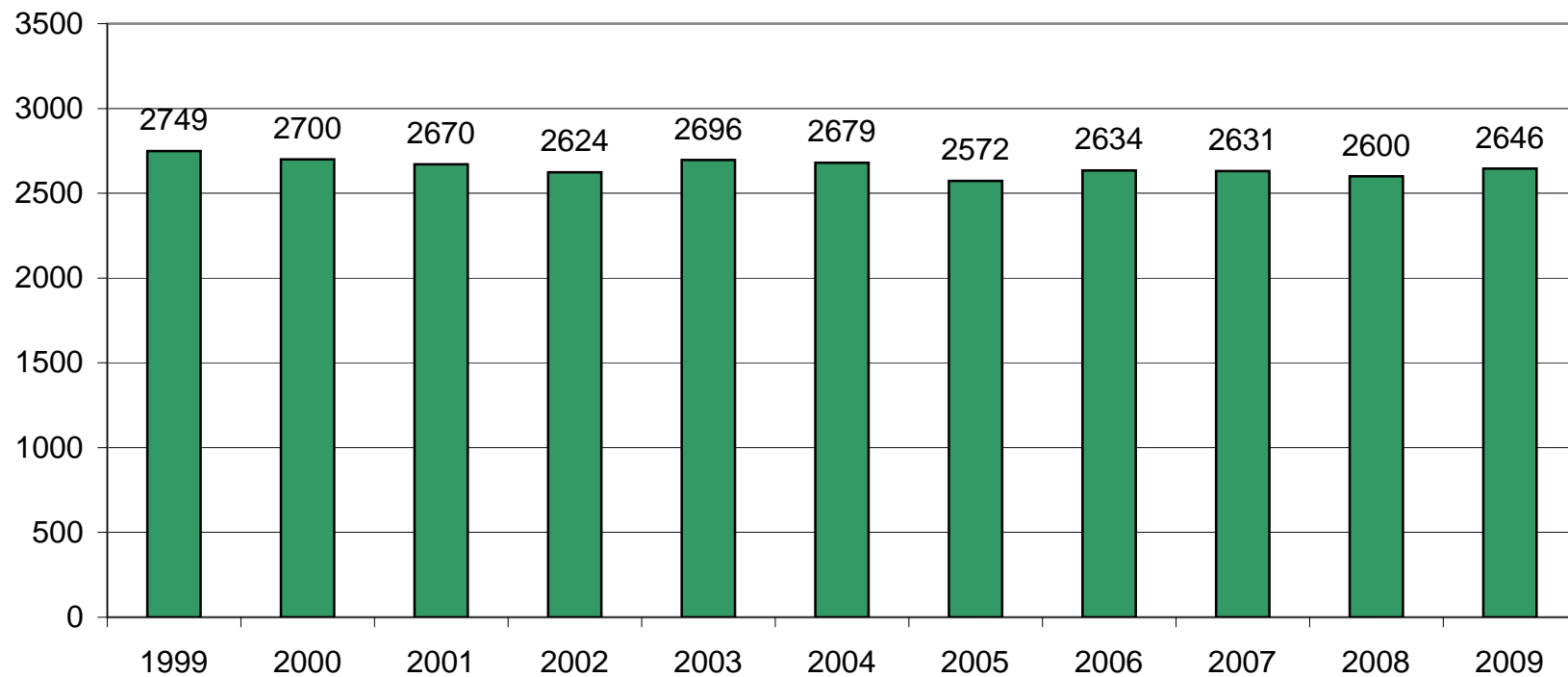
*1999-00 data developed from New Hampshire Department of Education report on Average Daily Membership

Historical Enrollment in Grade Combinations									
Year	PK-5	K-5	K-6	K-8	5-8	6-8	7-8	7-12	9-12
1999-00	1075	1017	1194	1647	802	630	453	1497	1044
2000-01	1082	1039	1216	1590	715	551	374	1441	1067
2001-02	1058	1021	1211	1567	713	546	356	1422	1066
2002-03	1036	1005	1167	1555	728	550	388	1421	1033
2003-04	1035	993	1163	1541	704	548	378	1477	1099
2004-05	1048	1002	1166	1499	655	497	333	1467	1134
2005-06	993	981	1138	1469	674	488	331	1422	1091
2006-07	1017	1004	1179	1512	703	508	333	1442	1109
2007-08	1014	997	1194	1530	686	533	336	1420	1084
2008-09	1007	992	1146	1533	707	541	387	1439	1052
2009-10	1027	1008	1176	1549	690	541	373	1451	1078

Historical Percentage Changes			
Year	K-12	Diff.	%
1999-00	2691	0	0.0%
2000-01	2657	-34	-1.3%
2001-02	2633	-24	-0.9%
2002-03	2593	-40	-1.5%
2003-04	2654	61	2.4%
2004-05	2633	-21	-0.8%
2005-06	2560	-73	-2.8%
2006-07	2621	61	2.4%
2007-08	2614	-7	-0.3%
2008-09	2585	-29	-1.1%
2009-10	2627	42	1.6%
K-12 Change		-64	-2.4%

Portsmouth, NH Historical Enrollment

PK-12, 1999-2009



Portsmouth, NH Projected Enrollment

School District: **Portsmouth, NH SAU#52**

11/17/09

Enrollment Projections By Grade*

Year	Births		School Year	PK	K	1	2	3	4	5	6	7	8	9	10	11	12	UNGR	K-12	PK-12
2004	249		2009-10	19	180	164	183	184	148	149	168	164	209	282	243	269	284	0	2627	2646
2005	245		2010-11	20	171	193	161	184	184	148	149	174	163	324	290	237	269	0	2647	2667
2006	204		2011-12	21	142	183	190	162	184	184	148	154	173	253	333	283	237	0	2626	2647
2007	203		2012-13	22	141	152	180	191	162	184	183	153	153	268	260	325	284	0	2636	2658
2008	227	(prov)	2013-14	23	158	151	150	181	191	162	183	189	152	237	276	254	326	0	2610	2633
2009	226	(est.)	2014-15	24	157	170	149	151	181	191	162	189	188	236	244	270	254	0	2542	2566
2010	221	(est.)	2015-16	25	154	168	167	150	151	181	190	168	188	292	243	238	270	0	2560	2585
2011	216	(est.)	2016-17	26	151	165	165	168	150	151	180	197	167	292	300	237	238	0	2561	2587
2012	219	(est.)	2017-18	27	152	162	162	166	168	150	151	186	196	259	300	293	237	0	2582	2609
2013	222	(est.)	2018-19	28	154	163	159	163	166	168	150	156	185	304	266	293	294	0	2621	2649
2014	221	(est.)	2019-20	29	154	165	160	160	163	166	167	155	155	287	313	260	294	0	2599	2628

*Projections should be updated on an annual basis.

Based on an estimate of births

Based on children already born

Based on students already enrolled

Projected Enrollment in Grade Combinations*

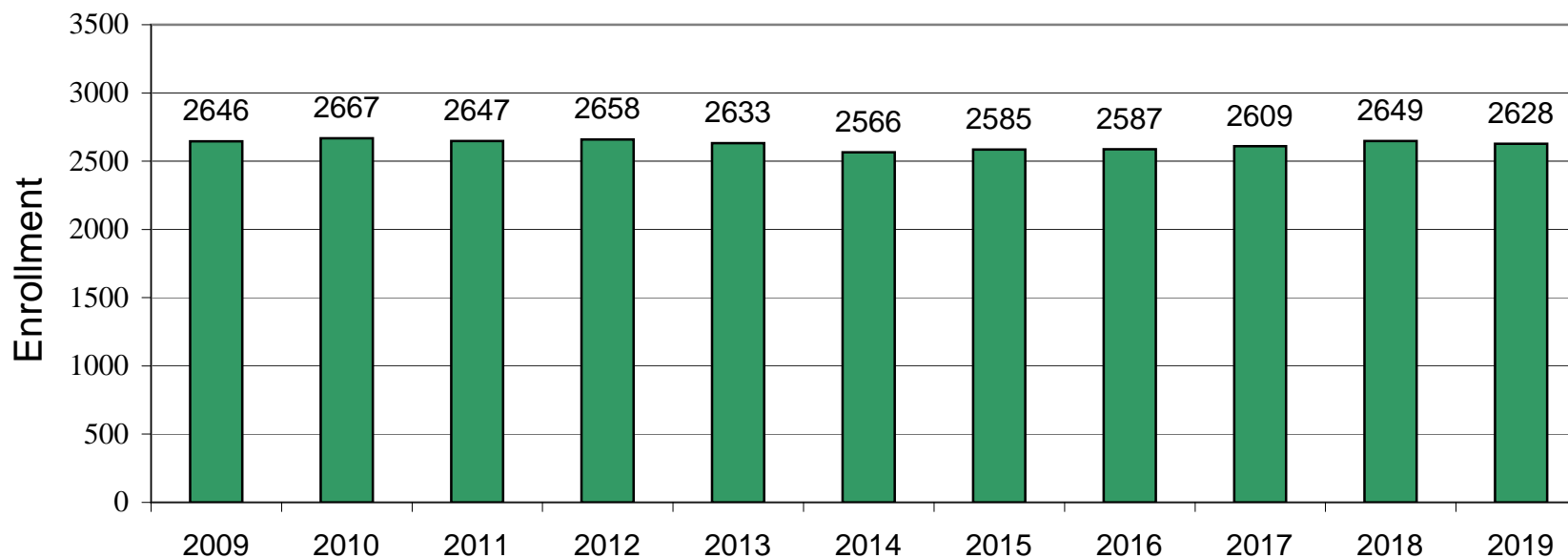
Year	PK-5	K-5	K-6	K-8	5-8	6-8	7-8	7-12	9-12
2009-10	1027	1008	1176	1549	690	541	373	1451	1078
2010-11	1061	1041	1190	1527	634	486	337	1457	1120
2011-12	1066	1045	1193	1520	659	475	327	1433	1106
2012-13	1032	1010	1193	1499	673	489	306	1443	1137
2013-14	1016	993	1176	1517	686	524	341	1434	1093
2014-15	1023	999	1161	1538	730	539	377	1381	1004
2015-16	996	971	1161	1517	727	546	356	1399	1043
2016-17	976	950	1130	1494	695	544	364	1431	1067
2017-18	987	960	1111	1493	683	533	382	1471	1089
2018-19	1001	973	1123	1464	659	491	341	1498	1157
2019-20	997	968	1135	1445	643	477	310	1464	1154

Projected Percentage Changes

Years	K-12	Diff.	%
2009-10	2627	0	0.0%
2010-11	2647	20	0.8%
2011-12	2626	-21	-0.8%
2012-13	2636	10	0.4%
2013-14	2610	-26	-1.0%
2014-15	2542	-68	-2.6%
2015-16	2560	18	0.7%
2016-17	2561	1	0.0%
2017-18	2582	21	0.8%
2018-19	2621	39	1.5%
2019-20	2599	-22	-0.8%
K-12 Change		-28	-1.1%

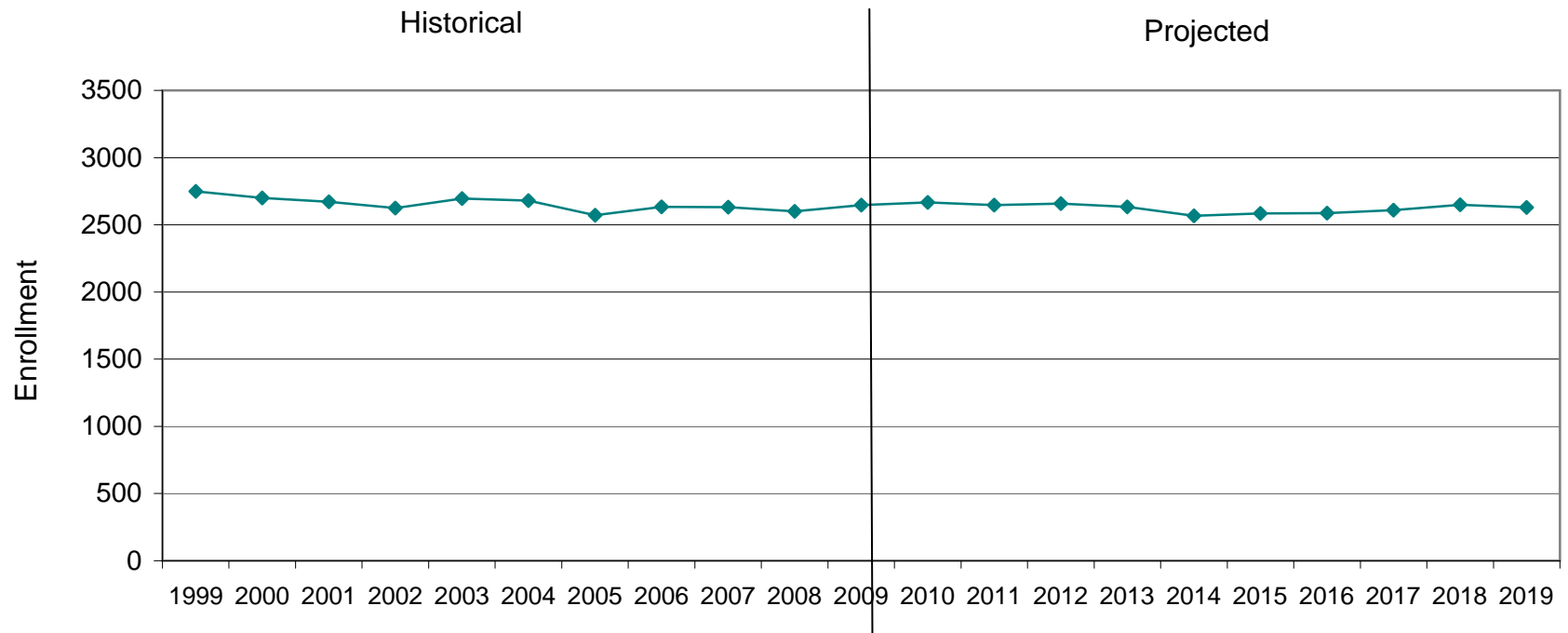
Portsmouth, NH Projected Enrollment

PK-12 TO 2019 Based On Data Through School Year 2009-10

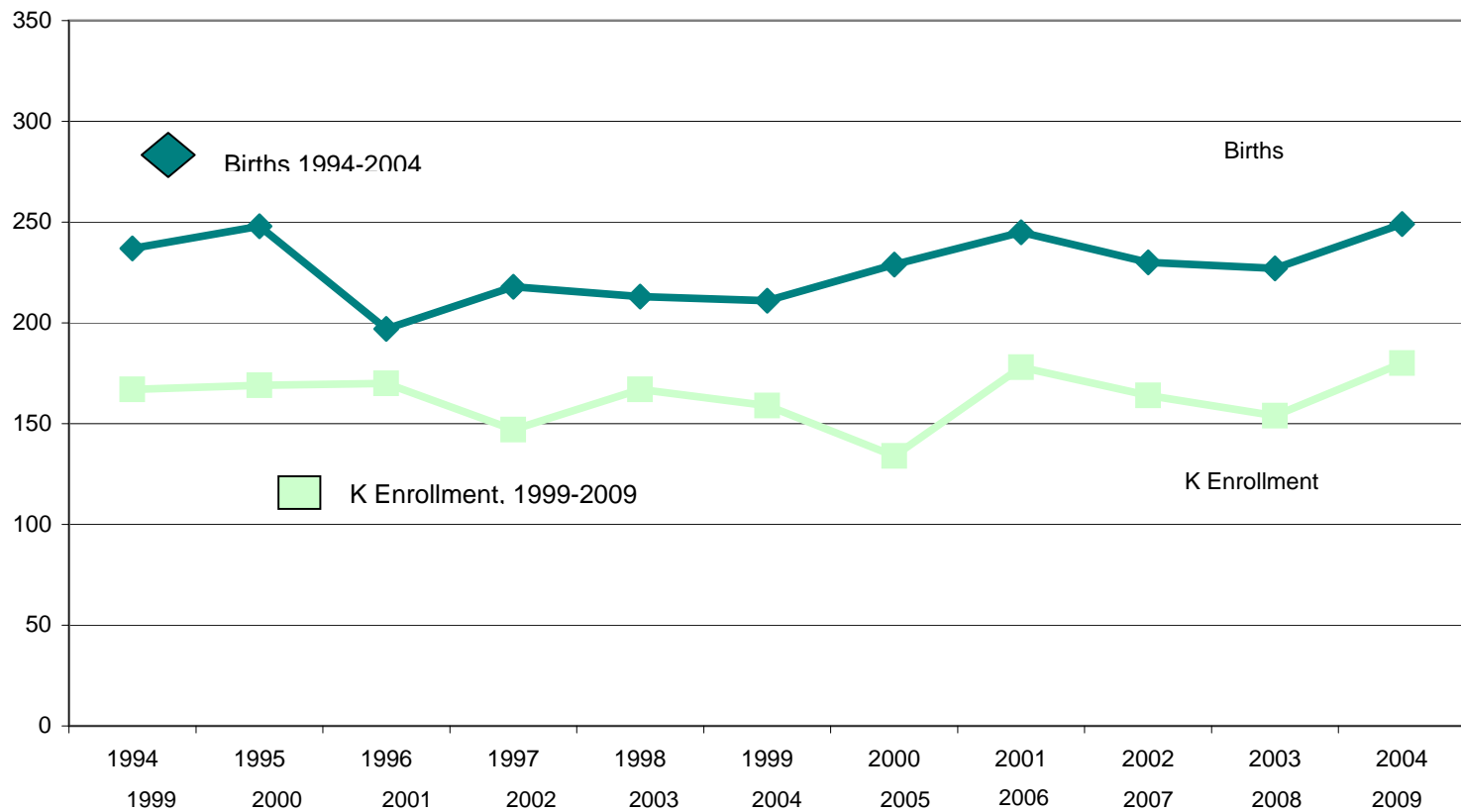


Portsmouth, NH Historical & Projected Enrollment

PK-12, 1999 TO 2019



Portsmouth, NH Birth-to-Kindergarten Relationship



Portsmouth, NH Additional Data

Building Permits Issued		
Year	Single-Family	Multi-Units
1999	47	0
2005	13	63
2006	21	4
2007	10	16
2008	6	30
2009	13 to date	4

Source: HUD

Enrollment History		
Year	Voc-Tech 9-12 Total	Non-Public K-12 Total
2000-01	662	n/a
2005-06	683	n/a
2006-07	791	n/a
2007-08	741	n/a
2008-09	913	n/a
2009-10	829	n/a

Residents in Non-Public Independent and Parochial Schools (Regular Education)														
Enrollments as of Oct. 1	K	1	2	3	4	5	6	7	8	9	10	11	12	K-12 TOTAL
	0	0	0	0	0	0	0	0	0	0	0	0	0	n/a

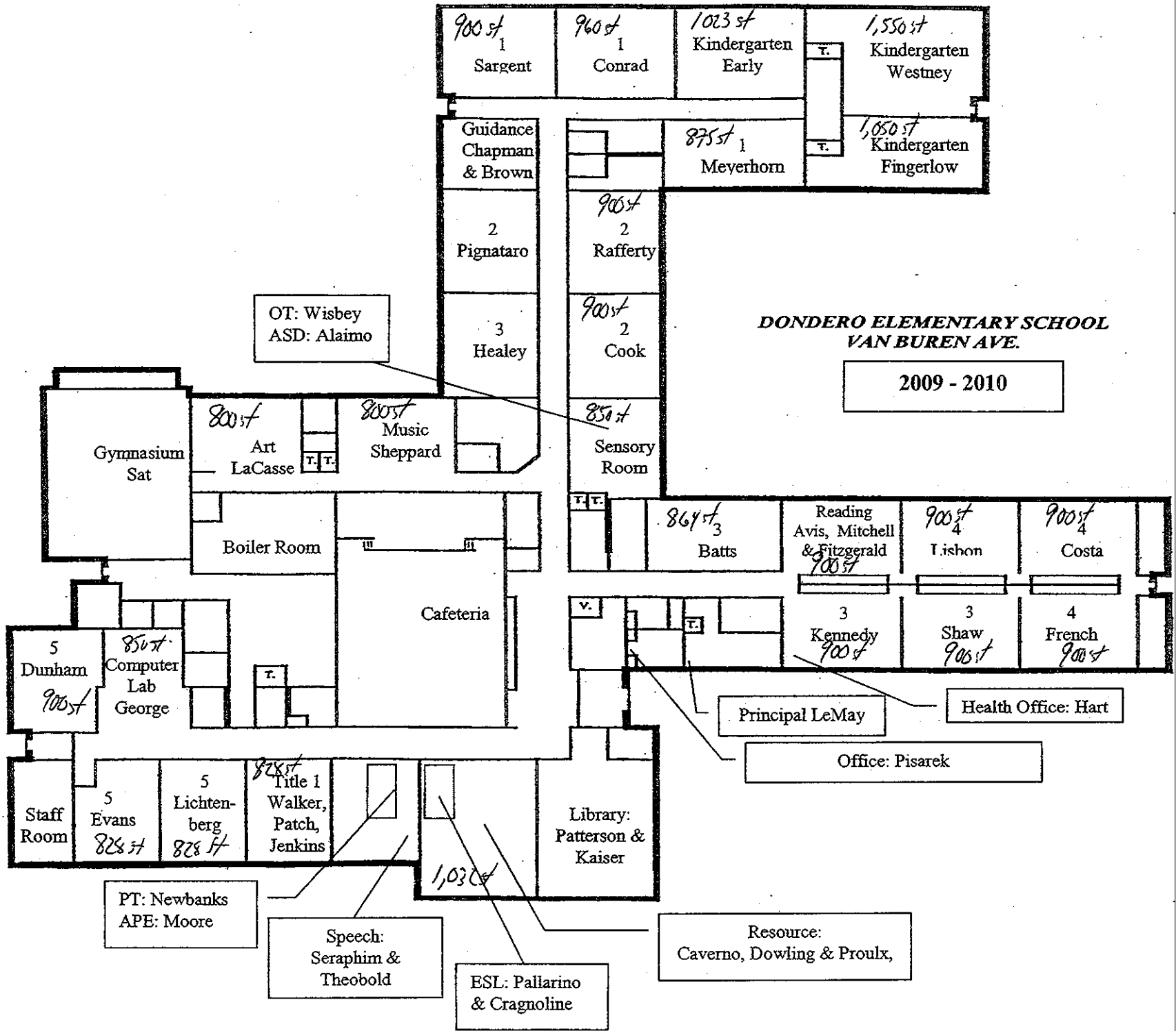
K-12 Home-Schooled Students	
2009	16

K-12 Residents Enrolled in Charter or Magnet Schools	
2009	5

K-12 SpEd Outplaced Students	
2009	14

K-12 Choiced-In, Tuitioned-In, & Other Non-Residents	
2009	0

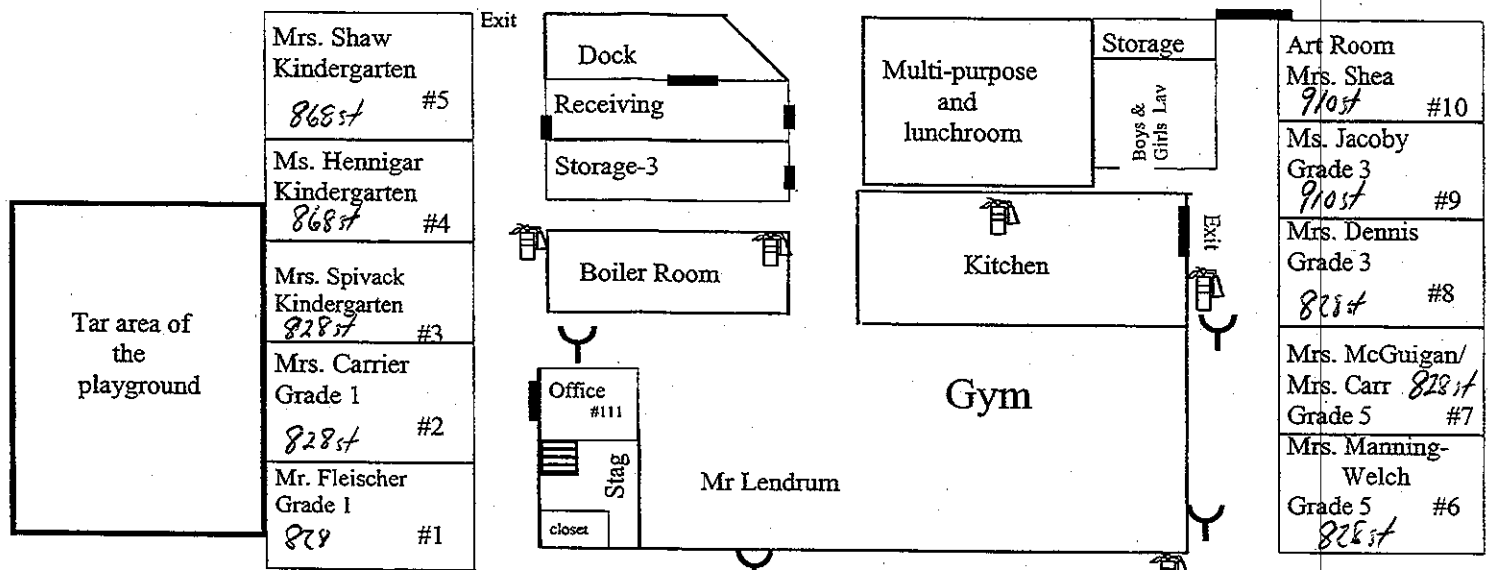
The above data were used to assist in the preparation of the enrollment projections. If additional demographic work is needed, please contact our office.



2009-2010

9-4-09

Exit

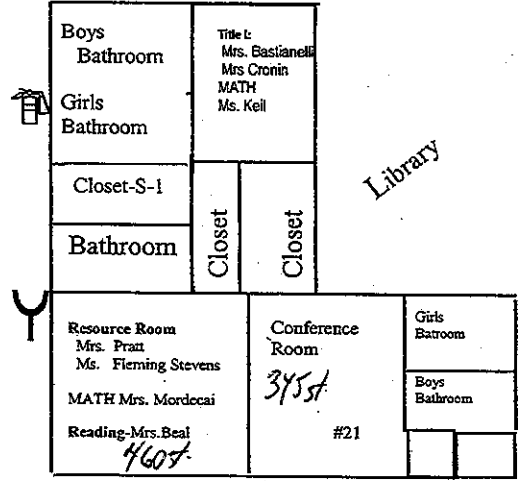
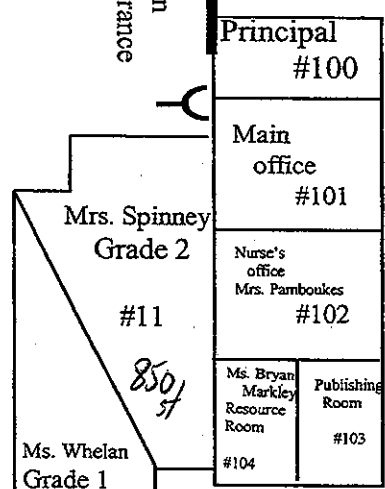


Tar area of the playground

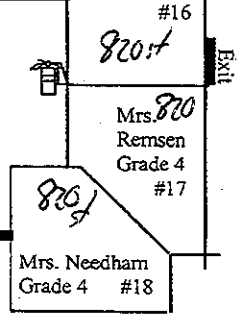
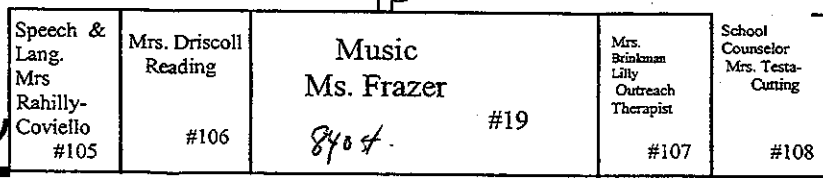
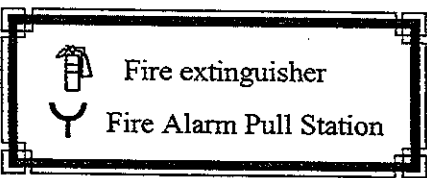
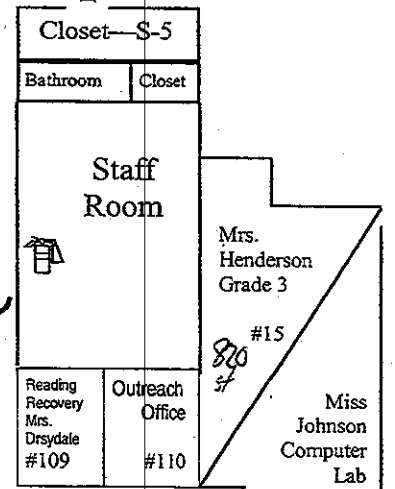
Vi Davis Sign

NEW FRANKLIN SCHOOL

Main Entrance



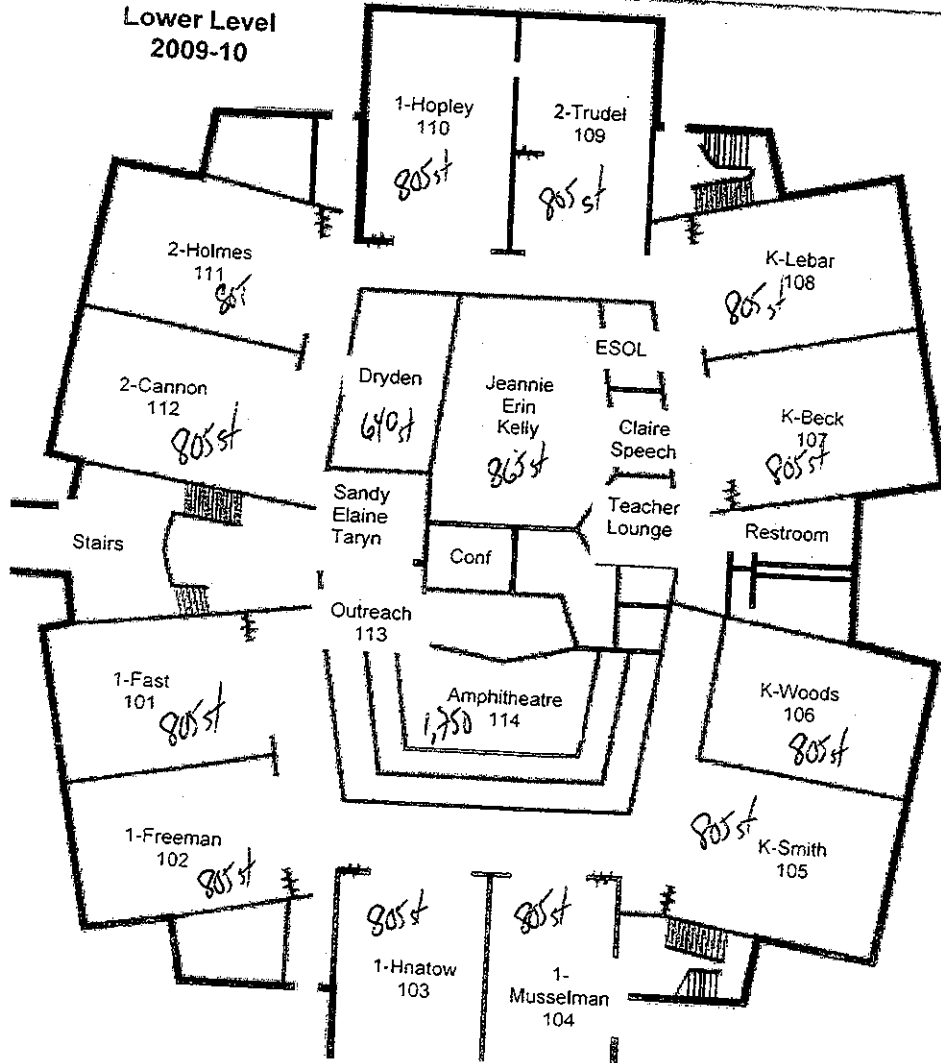
Library



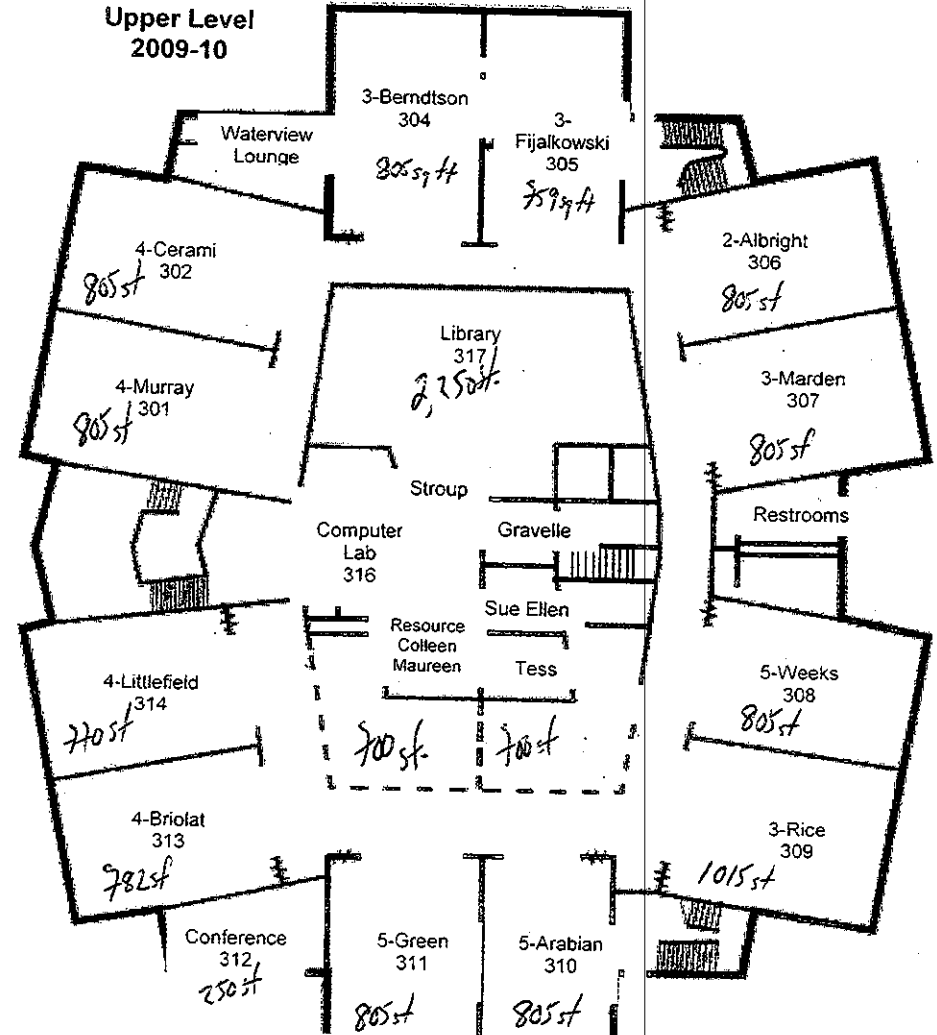
FLAG POLE

LITTLE HARBOUR SCHOOL MAP

Lower Level 2009-10



Upper Level 2009-10



Requirements for Public School Choice

- Schools must offer choice in every year of school improvement
- District must notify all parents of students enrolled in Title I schools that have been identified as having to provide choice
- Notification must be comprehensive and in an easy-to-understand format
 - ~~Inform parents that their child is eligible to attend another public school~~
 - Identify each public school, including public charter schools, that the parent can select
 - Describe the performance and overall quality of those schools
- If no schools are available parents must still be notified
- The LEA must offer more than one choice to eligible students if the LEA has more than 2 schools at the grade level in question
- Districts must provide transportation to the new school
- Districts may establish a cooperative agreement with other LEAs
- Districts may offer supplemental educational services to all eligible students in the first year of school improvement
- All students enrolled in the Title I School in Need of Improvement are eligible for choice
- Priority must be given to the lowest achieving, low income students
- Receiving schools cannot be identified for improvement
- Receiving school may include a public charter school within the LEA
- An LEA must permit the student to remain in the new school until the student has completed the highest grade in the school
- The LEA is no longer obligated to provide transportation when the student's school of origin is no longer identified for improvement.

Guidance on Choice may be located at: <http://www.ed.gov/policy/elsec/guid/schoolchoiceguid.doc>