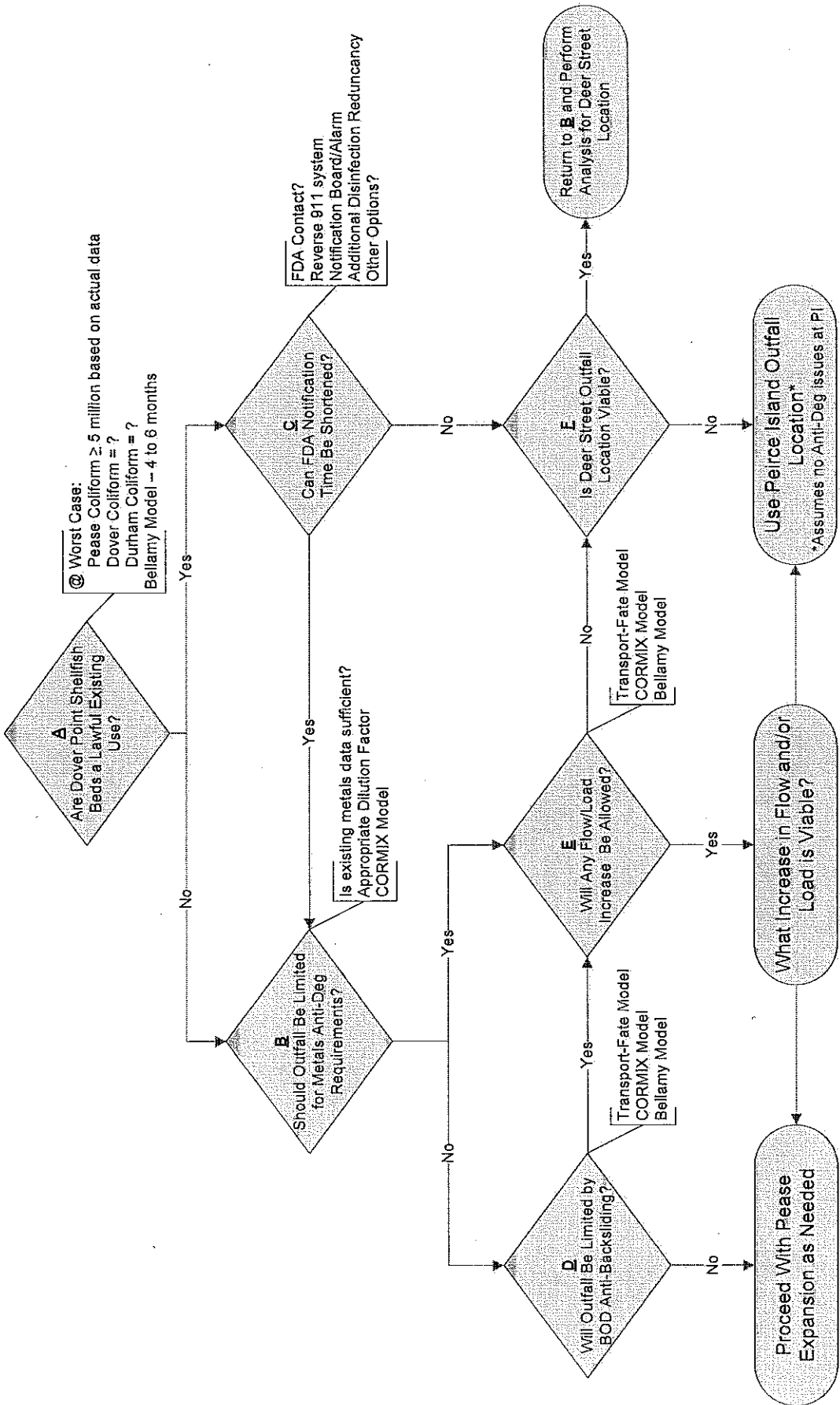


# What Increase in Flow and/or Load is Viable at Pease Outfall?

## Decision Flow Chart



**Portsmouth NH Wastewater Master Plan**  
 Questions Affecting Final Decision

QUESTION	TYPE	TIME TO ANSWER	INFORMATION NEEDED
1.) What increase in flow and/or load is viable at the Pease Outfall? At Deer St? a - f. See Flow Chart for related questions g. If Peirce Island Outfall is only option are there any associated anti-deg or anti-backsliding issues? h. What are acceptable models?	Regulatory	NH DES to Advise Based on Flow Chart	See Flow Chart
2.) Is BioMag a viable technology for the City of Portsmouth's wastewater treatment? a. What increase in Pease SBR capacity is viable? b. What reduction in pollutant concentrations is feasible?	Technical	18 Months	Pilot Wastewater Characterization
3.) What will be considered to satisfy the current Consent Decree? a. Is interim secondary treatment at PI acceptable for City's current sanitary flows in excess of the Pease WWTF capacity? If Yes: b. What derivation of current secondary flow is acceptable (AADF, Water Use, Other)? c. During wet weather events is a stormwater bypass acceptable at Peirce Island for flows in excess of sanitary? d. When should future permit including BNR requirements be expected if secondary requirement is met ASAP?	Regulatory	EPA to Advise	EPA to Advise
4.) What is the maximum capacity available at Peirce Island within existing facility limits? a. What technologies are appropriate? b. Can it be designed for conversion to a stormwater treatment facility in the future?	Technical	18 Months	Question 3 Answer Pilot(s) Wastewater Characterization
5.) What permit limits should be expected at Outfall locations in the near future? (TN, TP etc.) a. At Pease or Deer St? b. At Peirce Island?	Regulatory	EPA to Advise	N/A

