



# City of Portsmouth, New Hampshire

## DEPARTMENT OF COMMUNITY DEVELOPMENT

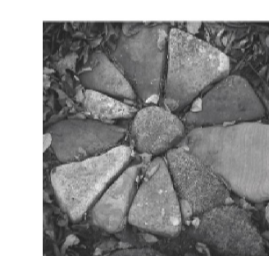
Plans for the Construction of

# ROCK STREET PARK IMPROVEMENTS

City of Portsmouth, New Hampshire  
John P. Bohenko, City Manager

Community Development Coordinator  
Elise D. Annunziata

Plans Prepared By:



**terra firma**

landscape architecture

163.a court street · portsmouth, nh 03801  
office 603.430.8388 | terrence@terrafirmalandarch.com

## ROSS ENGINEERING

Civil/Structural Engineering  
& Surveying

909 Islington St.  
Portsmouth, NH 03801  
(603) 433-7560

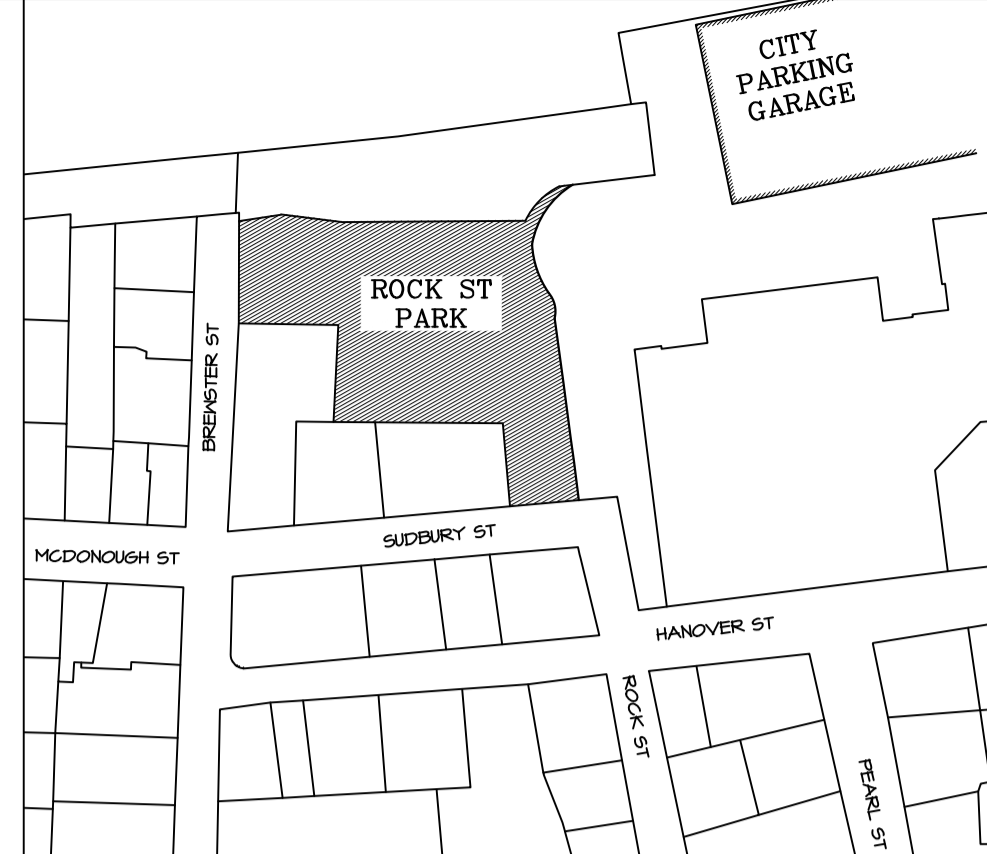
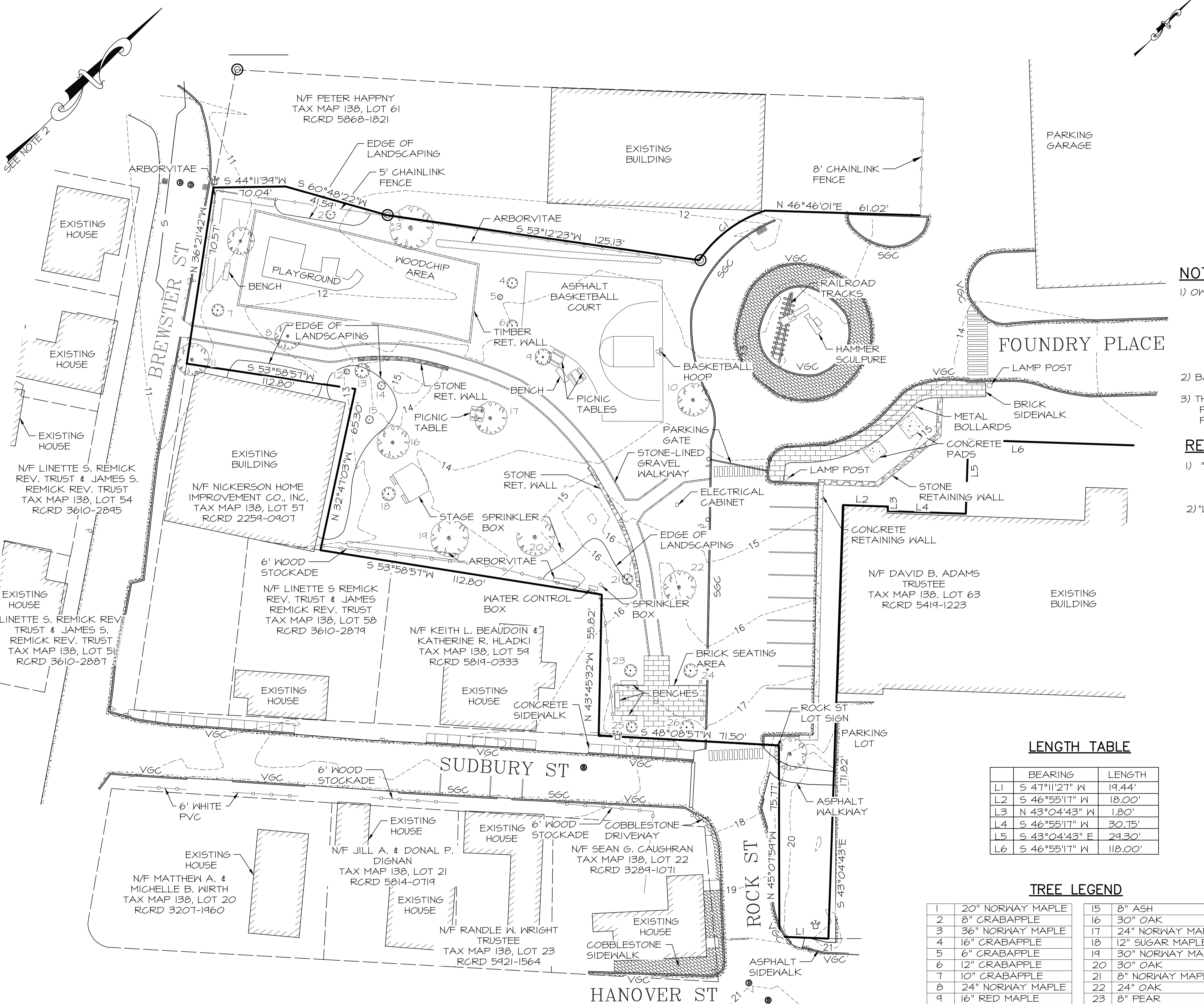
### INDEX OF DRAWINGS

E-1	Existing Conditions Plan
D-1	Demolition Plan
L-1	Landscape Plan
L-2	Hardscape Details
L-3	Planting Details
C-1	Layout and Utilities Plan
C-2	Grading and Drainage Plan
C-3	Details Sheet A
C-4	Details Sheet B
C-5	Erosion Control Plan

PROJECT SITE



LOCATION PLAN



**ROSS ENGINEERING**  
Civil/Structural Engineering  
& Surveying  
909 Islington St  
Portsmouth, NH 03801  
(603) 433-7560

**NOTES**

- OWNER OF RECORD:  
CITY OF PORTSMOUTH  
TAX MAP 138, LOT 60  
1 JUNKINS AVE  
PORTSMOUTH, NH 03801  
RCRD: 5848-0666  
AREA: 60,532 SF, 1.39 ACRES
- BASIS OF BEARING HELD FROM PLAN REFERENCE #1.
- THE PARCEL IS NOT WITHIN A FEMA FLOOD ZONE, AS PER FLOOD INSURANCE RATE MAP #33015C0254E, PANEL 330134, DATED MAY 17, 2005.

**REFERENCE PLANS**

- "STANDARD BOUNDARY SURVEY" BY AMBIT ENGINEERING, INC. DATED SEPTEMBER, 2015. RCRD D-40490
- "LOT LINE RELOCATION AND EASMENT PLAN" BY AMBIT ENGINEERING, INC. DATED MARCH, 2017. RCRD D-40491

**LEGEND**

- 100-- EXISTING CONTOUR
- PROPOSED CONTOUR
- 100x00 SPOT ELEVATION
- ⊙ MONUMENT FOUND
- UTILITY POLE
- FENCE
- CHAIN LINK FENCE
- GRANITE CURB
- ☼ FIRE HYDRANT
- ▒ COBBLESTONE
- ▒ BRICK
- CATCH BASIN
- ⊙ DRAIN MANHOLE
- ⊙ SEWER MANHOLE
- SEWER
- W — WATER
- ⊙ GAS VALVE
- ⊙ WATER STOP

**LENGTH TABLE**

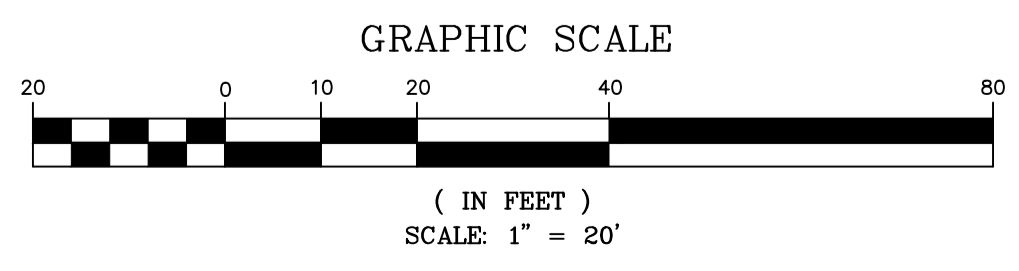
	BEARING	LENGTH
L1	S 47°11'27" W	19.44'
L2	S 46°55'17" W	18.00'
L3	N 43°04'43" W	1.80'
L4	S 46°55'17" W	30.75'
L5	S 43°04'43" E	24.30'
L6	S 46°55'17" W	118.00'

**TREE LEGEND**

1	20" NORWAY MAPLE	15	8" ASH
2	8" CRABAPPLE	16	30" OAK
3	36" NORWAY MAPLE	17	24" NORWAY MAPLE
4	16" CRABAPPLE	18	12" SUGAR MAPLE
5	6" CRABAPPLE	19	30" NORWAY MAPLE
6	12" CRABAPPLE	20	30" OAK
7	10" CRABAPPLE	21	8" NORWAY MAPLE
8	24" NORWAY MAPLE	22	24" OAK
9	16" RED MAPLE	23	8" PEAR
10	20" NORWAY MAPLE	24	10" PEAR
11	30" SUGAR MAPLE	25	7" PEAR
12	6" APPLE	26	10" PEAR
13	10" CHERRY	27	24" OAK
14	6" OAK		

**CURVE TABLE**

CURVE	RADIUS	ARC LENGTH	CHORD LENGTH	CHORD BEARING	DELTA ANGLE
CI	50.00'	33.37'	32.75'	S08°27'35"W	38°14'11"



City Review	City Review	Issue Notes
2/7/19	2/13/19	
1	2	

Date	Revision	No.
2/13/19	Revision	

Designed By	Drawn By	Checked By	Reviewed By	Submitted By	Project Manager
DDD	DDD	AR	AR	AR	AR

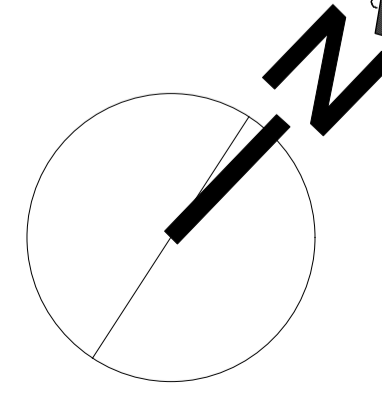
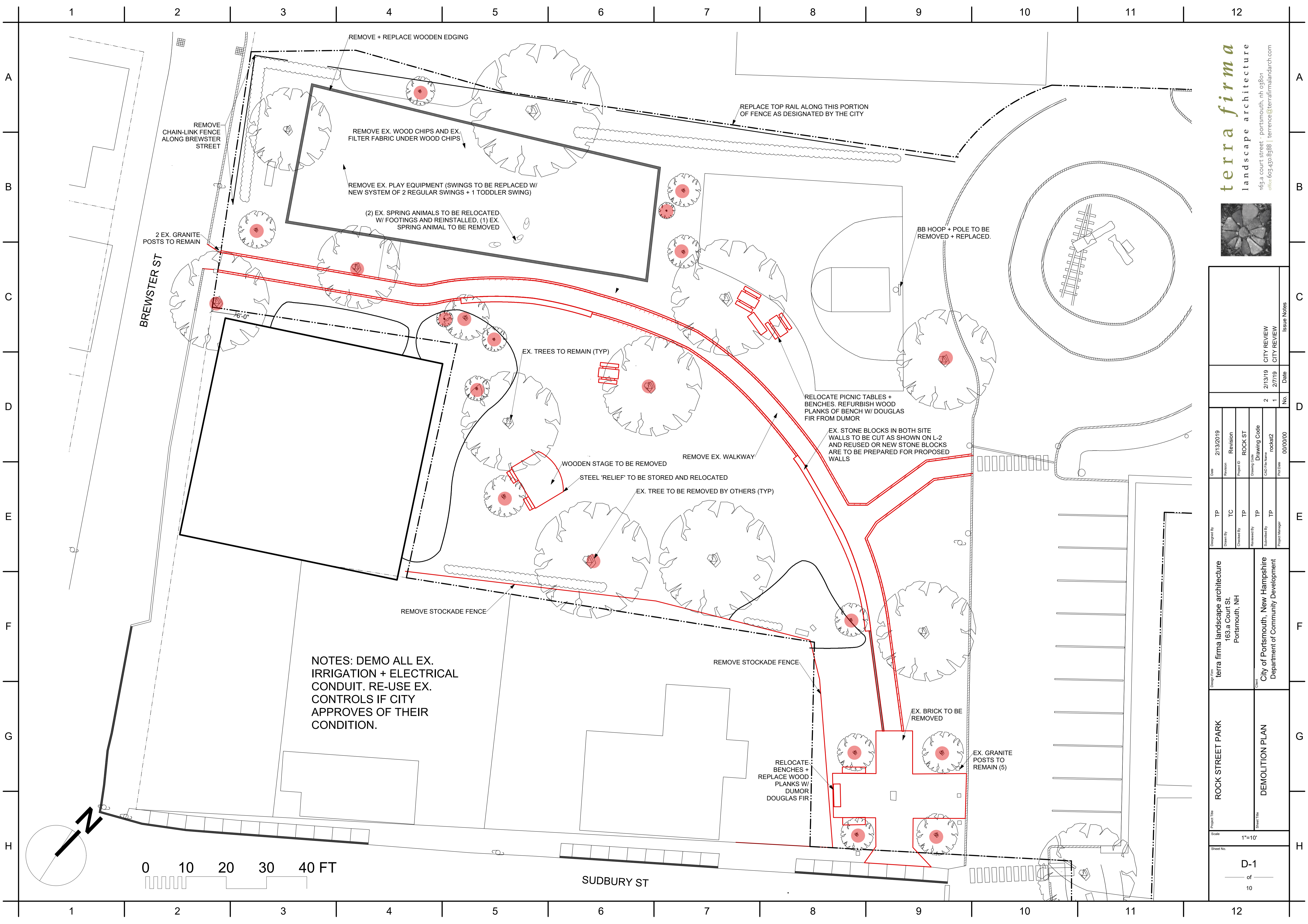
Project File	Sheet File
ROSS ENGINEERING 909 Islington St, Suite 6 Portsmouth, NH 03801	City of Portsmouth, New Hampshire Department of Community Development

Scale: 1" = 20'

Sheet No. **E-1**

10

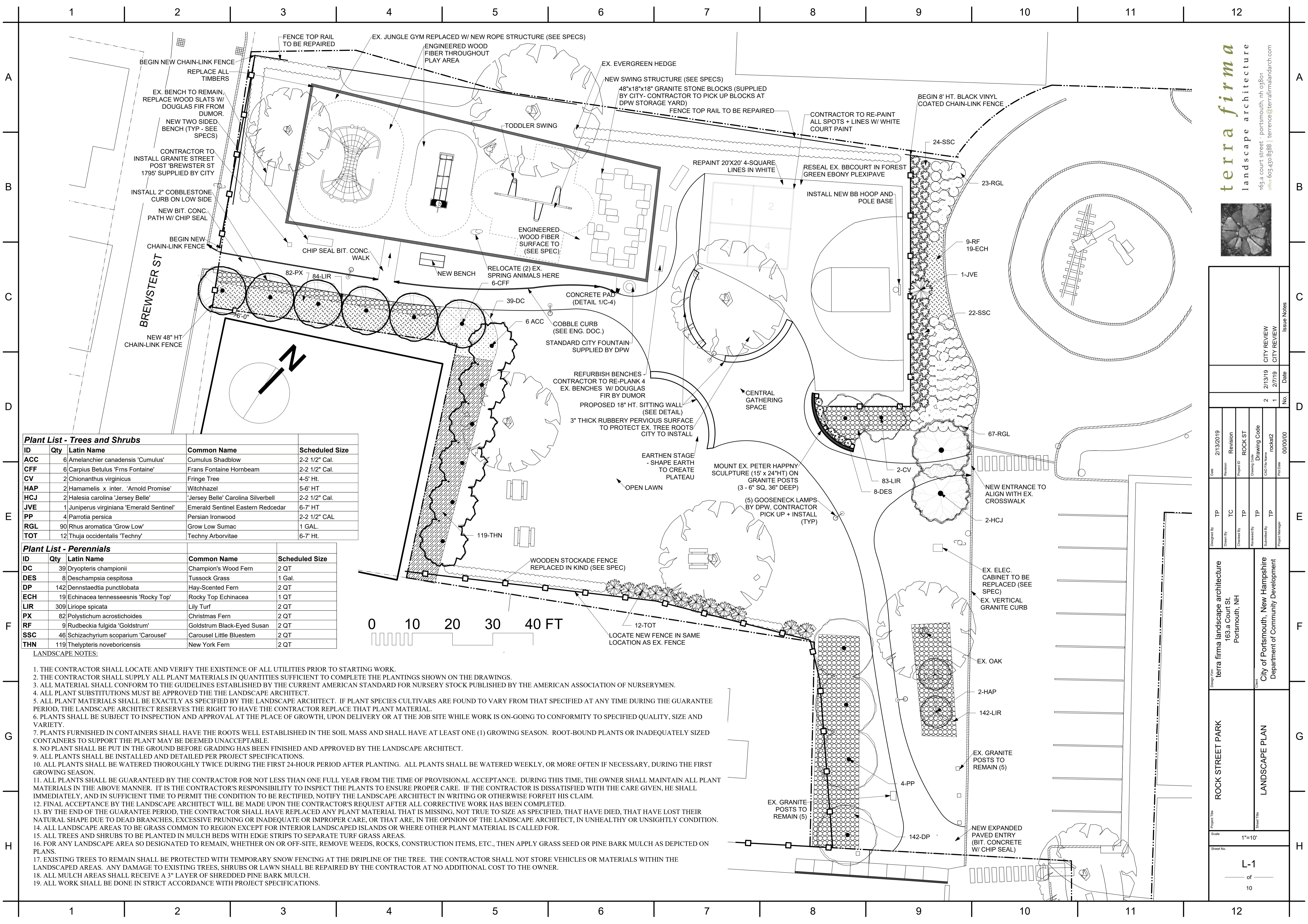


**terra firma**  
landscape architecture

163 a court street · portsmouth, nh 03801  
office 603.430.8388 | terrance@terrafirmalandscape.com



Project Title <b>ROCK STREET PARK</b>		Design Firm <b>terra firma landscape architecture</b> 163 a Court St. Portsmouth, NH		Date 2/13/2019	
Sheet Title <b>DEMOLITION PLAN</b>		Client <b>City of Portsmouth, New Hampshire</b> Department of Community Development		Revision ROCK ST	
Scale 1"=10'		Project ID ROCK ST		Drawing Code ROCKS2	
Sheet No. <b>D-1</b> of 10		Submitted By TP		No. 2	
		Project Manager TP		Date 2/13/19	
		Project Manager TP		Date 2/17/19	
		Project Manager TP		Date 2/17/19	
		Project Manager TP		Date 2/17/19	
		Project Manager TP		Date 2/17/19	



**Plant List - Trees and Shrubs**

ID	Qty	Latin Name	Common Name	Scheduled Size
ACC	6	Amelanchier canadensis 'Cumulus'	Cumulus Shadblow	2-2 1/2" Cal.
CFF	6	Carpinus Betulus 'Frns Fontaine'	Frans Fontaine Hornbeam	2-2 1/2" Cal.
CV	2	Chionanthus virginicus	Fringe Tree	4-5' HT.
HAP	2	Hamamelis x inter. 'Arnold Promise'	Witchhazel	5-6' HT
HCJ	2	Halesia carolina 'Jersey Belle'	'Jersey Belle' Carolina Silverbell	2-2 1/2" Cal.
JVE	1	Juniperus virginiana 'Emerald Sentinel'	Emerald Sentinel Eastern Redcedar	6-7' HT
PP	4	Parrotia persica	Persian Ironwood	2-2 1/2" CAL
RGL	90	Rhus aromatica 'Grow Low'	Grow Low Sumac	1 GAL.
TOT	12	Thuja occidentalis 'Techny'	Techny Arborvitae	6-7' HT.

**Plant List - Perennials**

ID	Qty	Latin Name	Common Name	Scheduled Size
DC	39	Dryopteris championii	Champion's Wood Fern	2 QT
DES	8	Deschampsia cespitosa	Tussock Grass	1 Gal.
DP	142	Dennstaedtia punctilobata	Hay-Scented Fern	2 QT
ECH	19	Echinacea tenneeseensis 'Rocky Top'	Rocky Top Echinacea	1 QT
LIR	309	Liriope spicata	Lily Turf	2 QT
PX	82	Polystichum acrostichoides	Christmas Fern	2 QT
RF	9	Rudbeckia fulgida 'Goldstrum'	Goldstrum Black-Eyed Susan	2 QT
SSC	46	Schizachyrium scoparium 'Carousef'	Carousel Little Bluestem	2 QT
THN	119	Thelypteris noveboricensis	New York Fern	2 QT

- LANDSCAPE NOTES:**
1. THE CONTRACTOR SHALL LOCATE AND VERIFY THE EXISTENCE OF ALL UTILITIES PRIOR TO STARTING WORK.
  2. THE CONTRACTOR SHALL SUPPLY ALL PLANT MATERIALS IN QUANTITIES SUFFICIENT TO COMPLETE THE PLANTINGS SHOWN ON THE DRAWINGS.
  3. ALL MATERIAL SHALL CONFORM TO THE GUIDELINES ESTABLISHED BY THE CURRENT AMERICAN STANDARD FOR NURSERY STOCK PUBLISHED BY THE AMERICAN ASSOCIATION OF NURSERYMEN.
  4. ALL PLANT SUBSTITUTIONS MUST BE APPROVED THE THE LANDSCAPE ARCHITECT.
  5. ALL PLANT MATERIALS SHALL BE EXACTLY AS SPECIFIED BY THE LANDSCAPE ARCHITECT. IF PLANT SPECIES CULTIVARS ARE FOUND TO VARY FROM THAT SPECIFIED AT ANY TIME DURING THE GUARANTEE PERIOD, THE LANDSCAPE ARCHITECT RESERVES THE RIGHT TO HAVE THE CONTRACTOR REPLACE THAT PLANT MATERIAL.
  6. PLANTS SHALL BE SUBJECT TO INSPECTION AND APPROVAL AT THE PLACE OF GROWTH, UPON DELIVERY OR AT THE JOB SITE WHILE WORK IS ON-GOING TO CONFORMITY TO SPECIFIED QUALITY, SIZE AND VARIETY.
  7. PLANTS FURNISHED IN CONTAINERS SHALL HAVE THE ROOTS WELL ESTABLISHED IN THE SOIL MASS AND SHALL HAVE AT LEAST ONE (1) GROWING SEASON. ROOT-BOUND PLANTS OR INADEQUATELY SIZED CONTAINERS TO SUPPORT THE PLANT MAY BE DEEMED UNACCEPTABLE.
  8. NO PLANT SHALL BE PUT IN THE GROUND BEFORE GRADING HAS BEEN FINISHED AND APPROVED BY THE LANDSCAPE ARCHITECT.
  9. ALL PLANTS SHALL BE INSTALLED AND DETAILED PER PROJECT SPECIFICATIONS.
  10. ALL PLANTS SHALL BE WATERED THOROUGHLY TWICE DURING THE FIRST 24-HOUR PERIOD AFTER PLANTING. ALL PLANTS SHALL BE WATERED WEEKLY, OR MORE OFTEN IF NECESSARY, DURING THE FIRST GROWING SEASON.
  11. ALL PLANTS SHALL BE GUARANTEED BY THE CONTRACTOR FOR NOT LESS THAN ONE FULL YEAR FROM THE TIME OF PROVISIONAL ACCEPTANCE. DURING THIS TIME, THE OWNER SHALL MAINTAIN ALL PLANT MATERIALS IN THE ABOVE MANNER. IT IS THE CONTRACTOR'S RESPONSIBILITY TO INSPECT THE PLANTS TO ENSURE PROPER CARE. IF THE CONTRACTOR IS DISSATISFIED WITH THE CARE GIVEN, HE SHALL IMMEDIATELY, AND IN SUFFICIENT TIME TO PERMIT THE CONDITION TO BE RECTIFIED, NOTIFY THE LANDSCAPE ARCHITECT IN WRITING OR OTHERWISE FORFEIT HIS CLAIM.
  12. FINAL ACCEPTANCE BY THE LANDSCAPE ARCHITECT WILL BE MADE UPON THE CONTRACTOR'S REQUEST AFTER ALL CORRECTIVE WORK HAS BEEN COMPLETED.
  13. BY THE END OF THE GUARANTEE PERIOD, THE CONTRACTOR SHALL HAVE REPLACED ANY PLANT MATERIAL THAT IS MISSING, NOT TRUE TO SIZE AS SPECIFIED, THAT HAVE DIED, THAT HAVE LOST THEIR NATURAL SHAPE DUE TO DEAD BRANCHES, EXCESSIVE PRUNING OR INADEQUATE OR IMPROPER CARE, OR THAT ARE, IN THE OPINION OF THE LANDSCAPE ARCHITECT, IN UNHEALTHY OR UNSIGHTLY CONDITION.
  14. ALL LANDSCAPE AREAS TO BE GRASS COMMON TO REGION EXCEPT FOR INTERIOR LANDSCAPED ISLANDS OR WHERE OTHER PLANT MATERIAL IS CALLED FOR.
  15. ALL TREES AND SHRUBS TO BE PLANTED IN MULCH BEDS WITH EDGE STRIPS TO SEPARATE TURF GRASS AREAS.
  16. FOR ANY LANDSCAPE AREA SO DESIGNATED TO REMAIN, WHETHER ON OR OFF-SITE, REMOVE WEEDS, ROCKS, CONSTRUCTION ITEMS, ETC., THEN APPLY GRASS SEED OR PINE BARK MULCH AS DEPICTED ON PLANS.
  17. EXISTING TREES TO REMAIN SHALL BE PROTECTED WITH TEMPORARY SNOW FENCING AT THE DRIPLINE OF THE TREE. THE CONTRACTOR SHALL NOT STORE VEHICLES OR MATERIALS WITHIN THE LANDSCAPED AREAS. ANY DAMAGE TO EXISTING TREES, SHRUBS OR LAWN SHALL BE REPAIRED BY THE CONTRACTOR AT NO ADDITIONAL COST TO THE OWNER.
  18. ALL MULCH AREAS SHALL RECEIVE A 3" LAYER OF SHREDDED PINE BARK MULCH.
  19. ALL WORK SHALL BE DONE IN STRICT ACCORDANCE WITH PROJECT SPECIFICATIONS.



Issue	Date	City Review	City Review
2	2/13/2019	CITY REVIEW	CITY REVIEW
1	2/7/19	CITY REVIEW	CITY REVIEW

Original By	Checked By	Reviewed By	Submitted By	Project Manager
TP	TP	TP	TP	TP

terra firma landscape architecture  
163 a Court St.  
Portsmouth, NH

City of Portsmouth, New Hampshire  
Department of Community Development

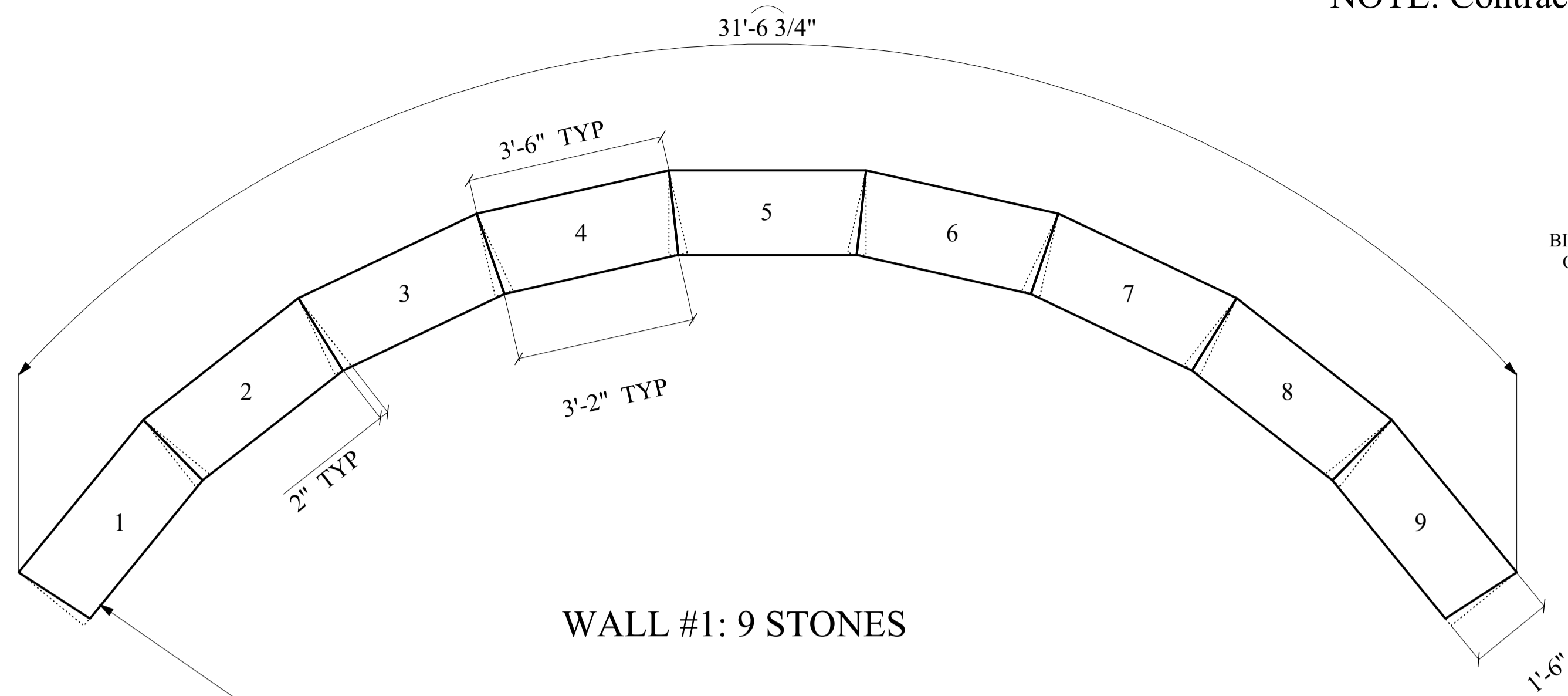
**ROCK STREET PARK**

**LANDSCAPE PLAN**

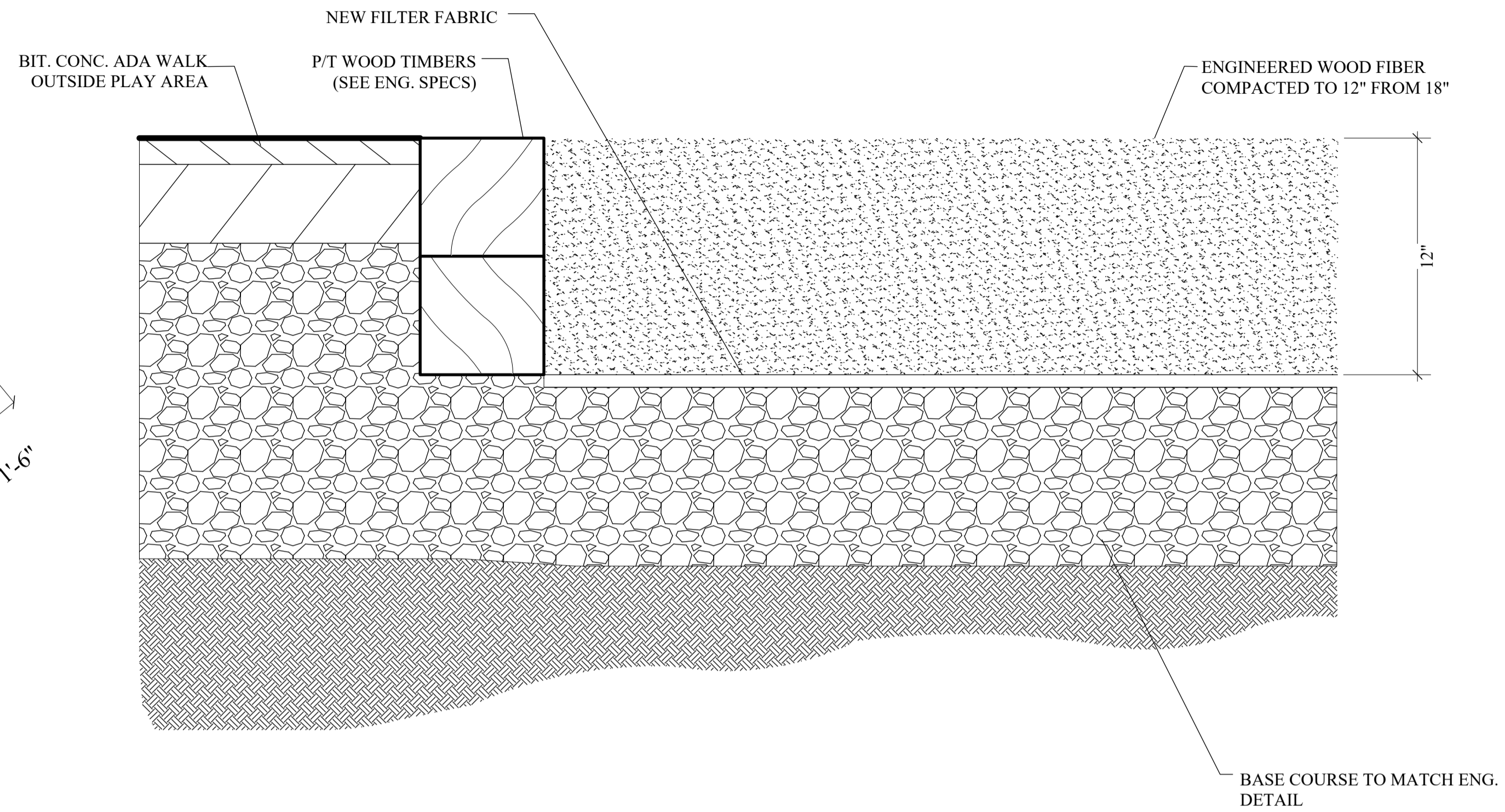
Scale: 1"=10'

Sheet No. L-1 of 10

NOTE: Contractor is to replace wood slats with Dumor Douglar Fir slats or equal as available from Mfgr.



WALL #1: 9 STONES



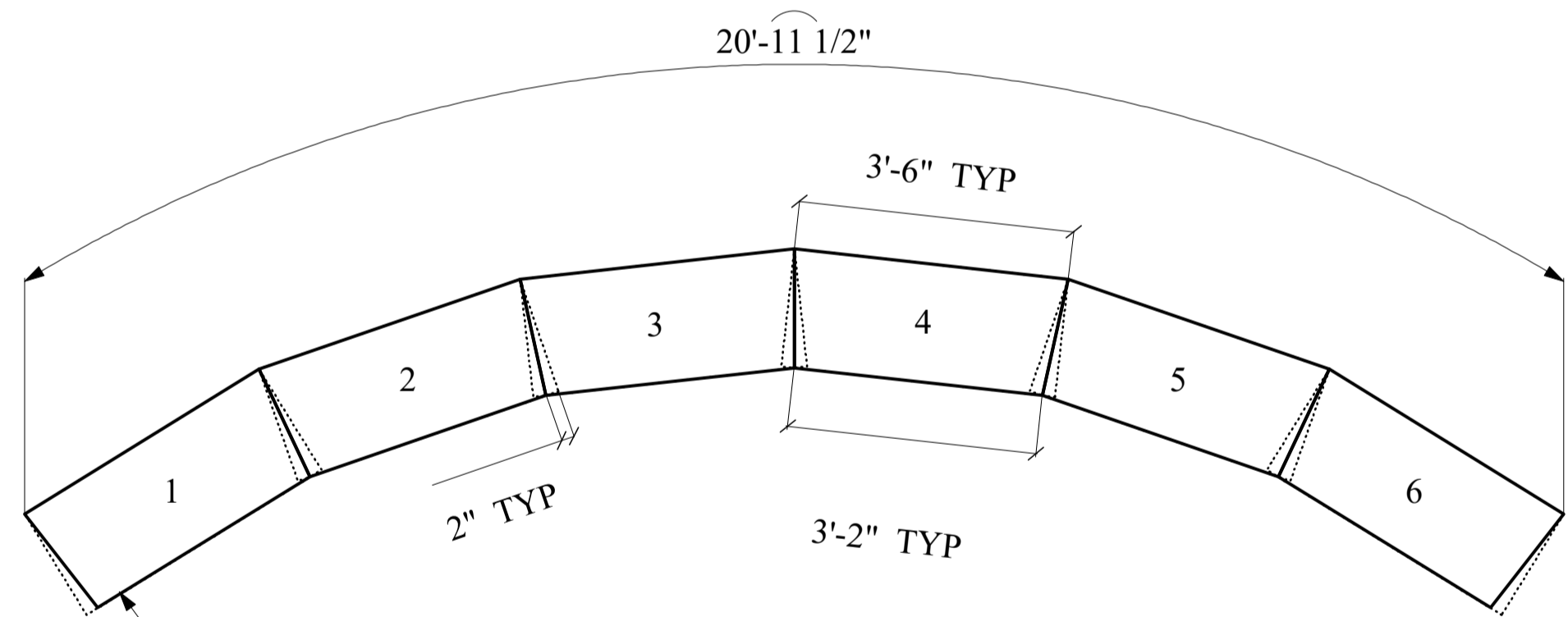
EWF SHALL BE COMPACTED IN 3-6\"/>

CONTRACTOR SHALL REMOVE ALL EX. WOOD CHIP MATERIAL AND ANY EX. FILTER FABRIC PRIOR TO INSTALL OF THE EWF.

CONTRACTOR TO INSTALL NEW FILTER FABRIC AND REPAIR EX. DRAINAGE SYSTEM DAMAGED BY THE INSTALLATION OF NEW PLAY EQUIPMENT.

ASTM & IPEMA CERTIFICATIONS INCLUDING BUT NOT LIMITED TO ASTM #S 1292 (SAFETY), 1951 (ACCESSIBILITY), 2075 (FREE OF METAL).

**2** ENGINEERED WOOD FIBER ADA PATHWAY SURFACING  
**L-2** NOT TO SCALE



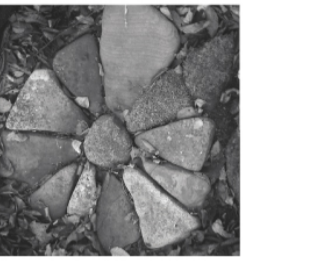
WALL #2+3: 6 STONES

CONTRACTOR TO SUPPLY NEW GRANITE BLOCKS AS SPECIFIED OR RE-WORK EXISTING STONES (ITEMIZE BOTH APPROACHES)

- 23 STONES ON SITE**
- JOINT ABUTTING EACH STONE IS SAW-CUT (BOTH STONE FACES)
  - OUTSIDE FACE: UNRENDERED (EX. ROCK FACE)
  - INSIDE FACE: UNRENDERED (EX. ROCK FACE)
  - TOP FACE: THERMAL FINISH
  - STONES TO BE UNIFORM HEIGHT OFF FINISH GRADE AT 16-18"

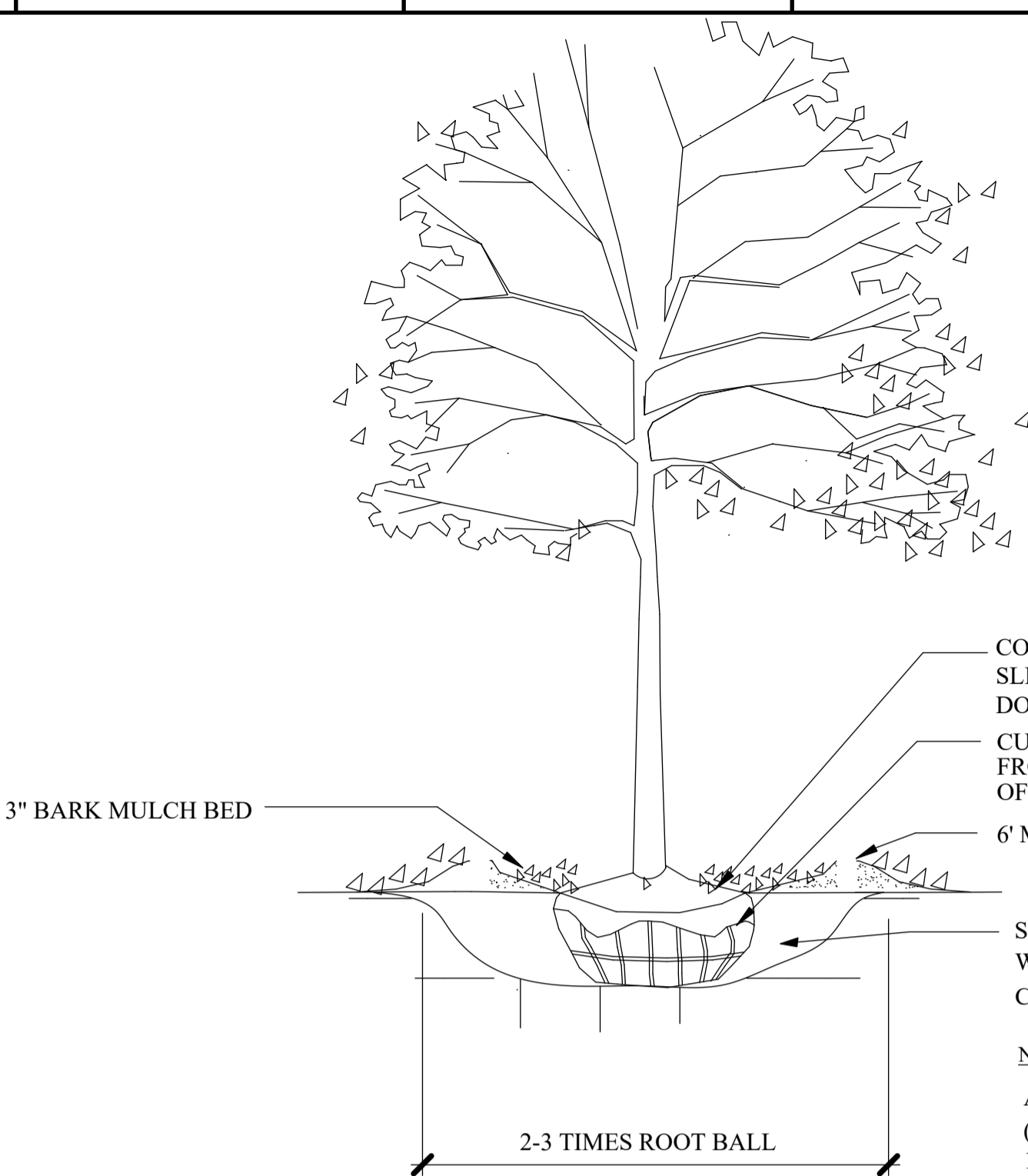
**1** STONE SITTING WALL - STONE CUT DETAIL PLAN  
**L-2** SCALE: 1/2"=1'-0"

**terra firma**  
 landscape architecture  
 163 a court street · portsmouth, nh 03801  
 office 603.430.8388 | terrence@terrafirmalandscape.com

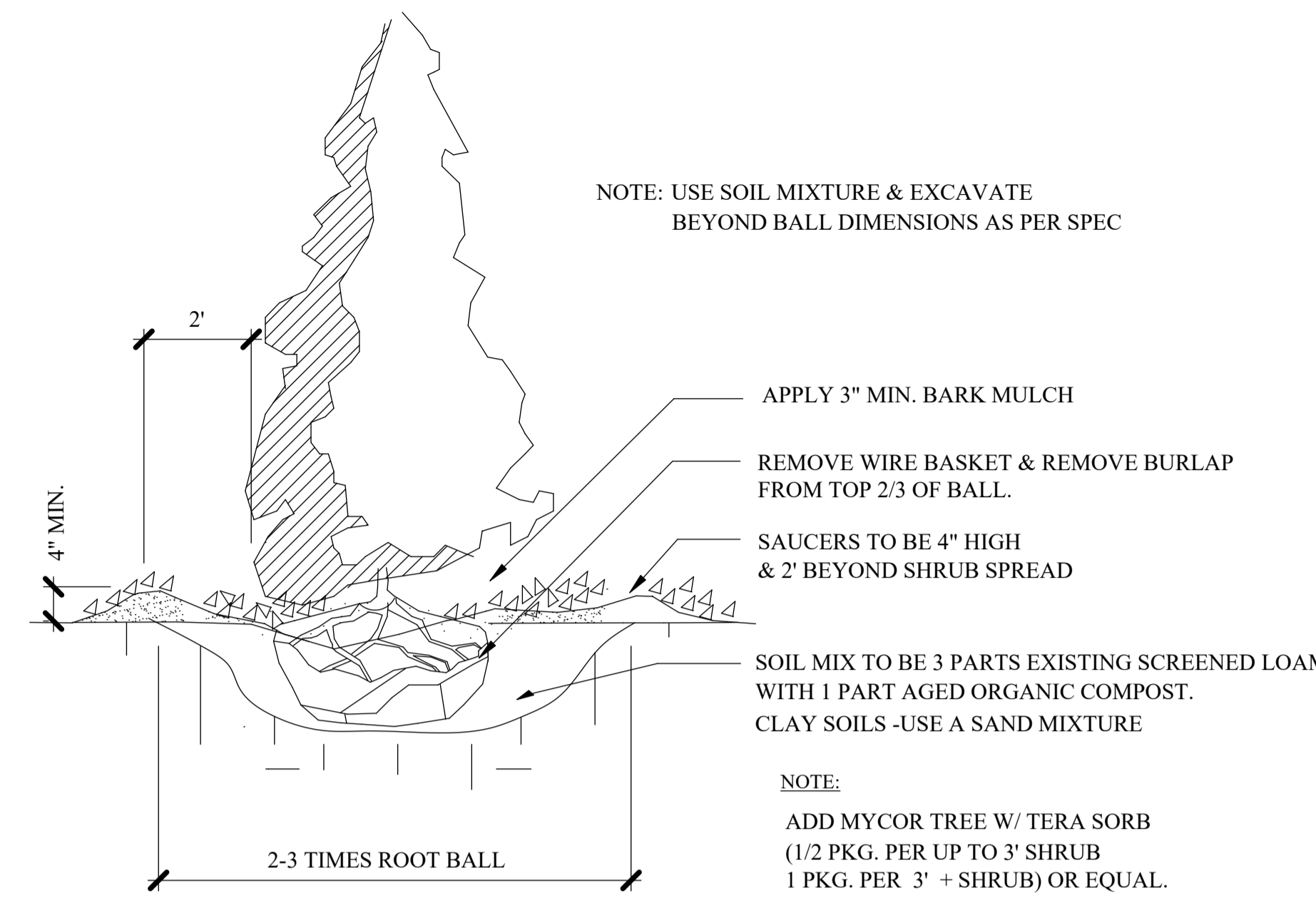


Design Firm	terra firma landscape architecture 163 a Court St. Portsmouth, NH	Client	City of Portsmouth, New Hampshire Department of Community Development
Project Title	ROCK STREET PARK	Sheet Title	HARDSCAPE DETAILS
Date	2/13/2019	Revision	ROCK ST
Drawn By	TP	Checked By	TP
Reviewed By	TP	Submitted By	TP
Project Manager		Project No.	00/00/00
City Review	2/13/19	Date	2/13/19
City Review	2/27/19	Date	2/27/19
No.	2	No.	1
Issue Notes			

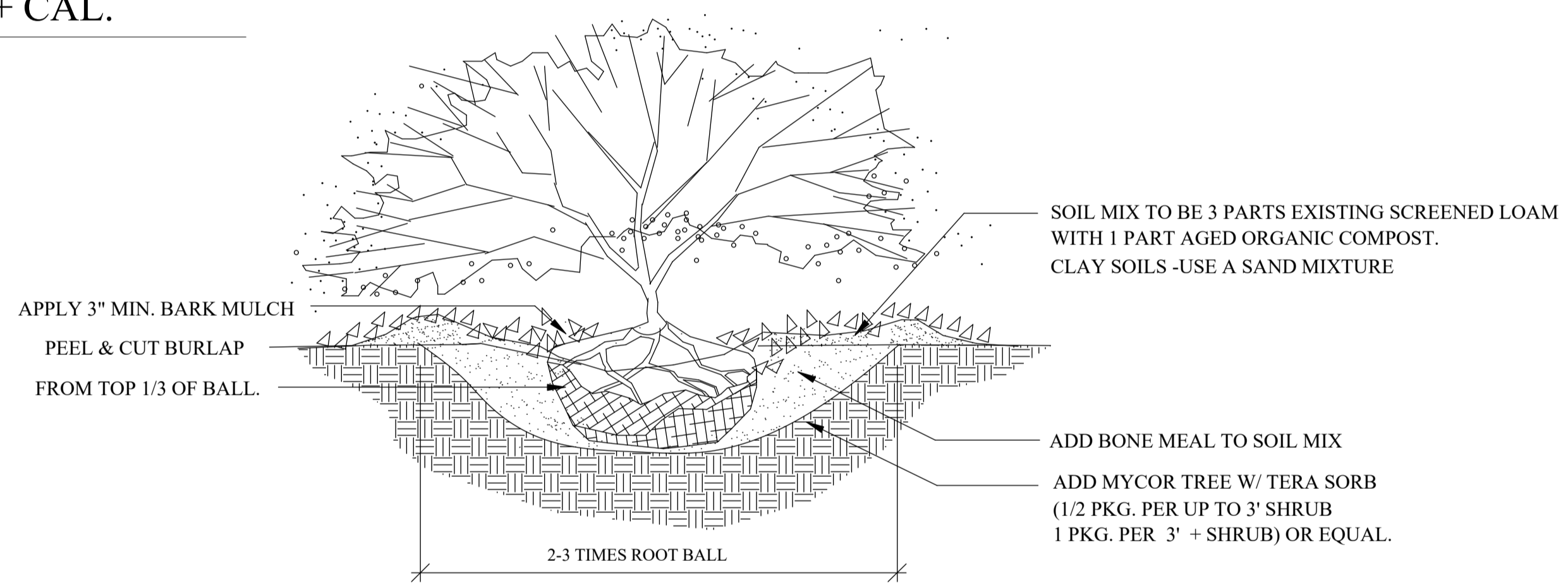
Scale: SEE SHEET  
 Sheet No. L-2 of 10



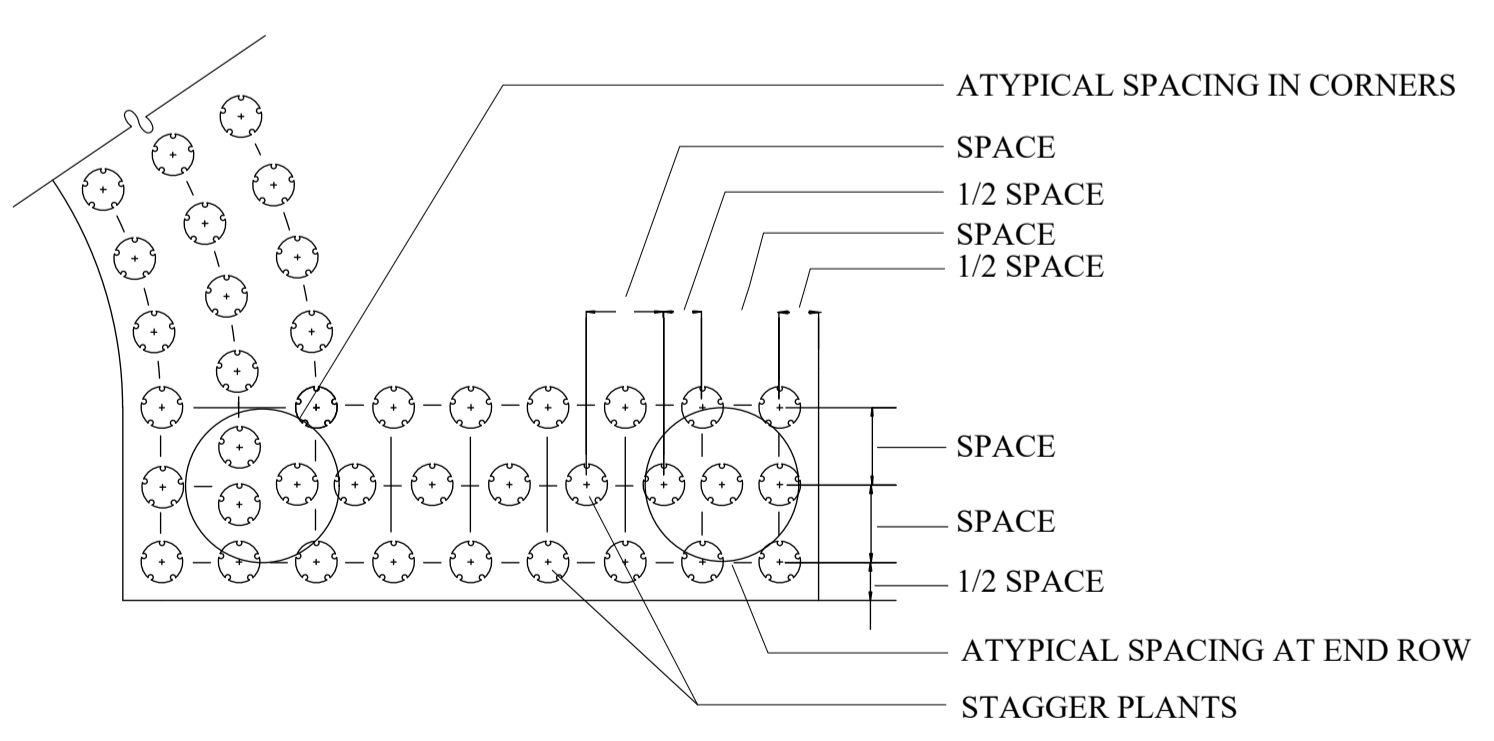
1  
L-3  
**TREE PLANTING - 2"+ CAL.**  
SCALE: NTS



2  
L-3  
**PYRAMIDAL EVERGREEN TREE PLANTING**  
SCALE: NTS

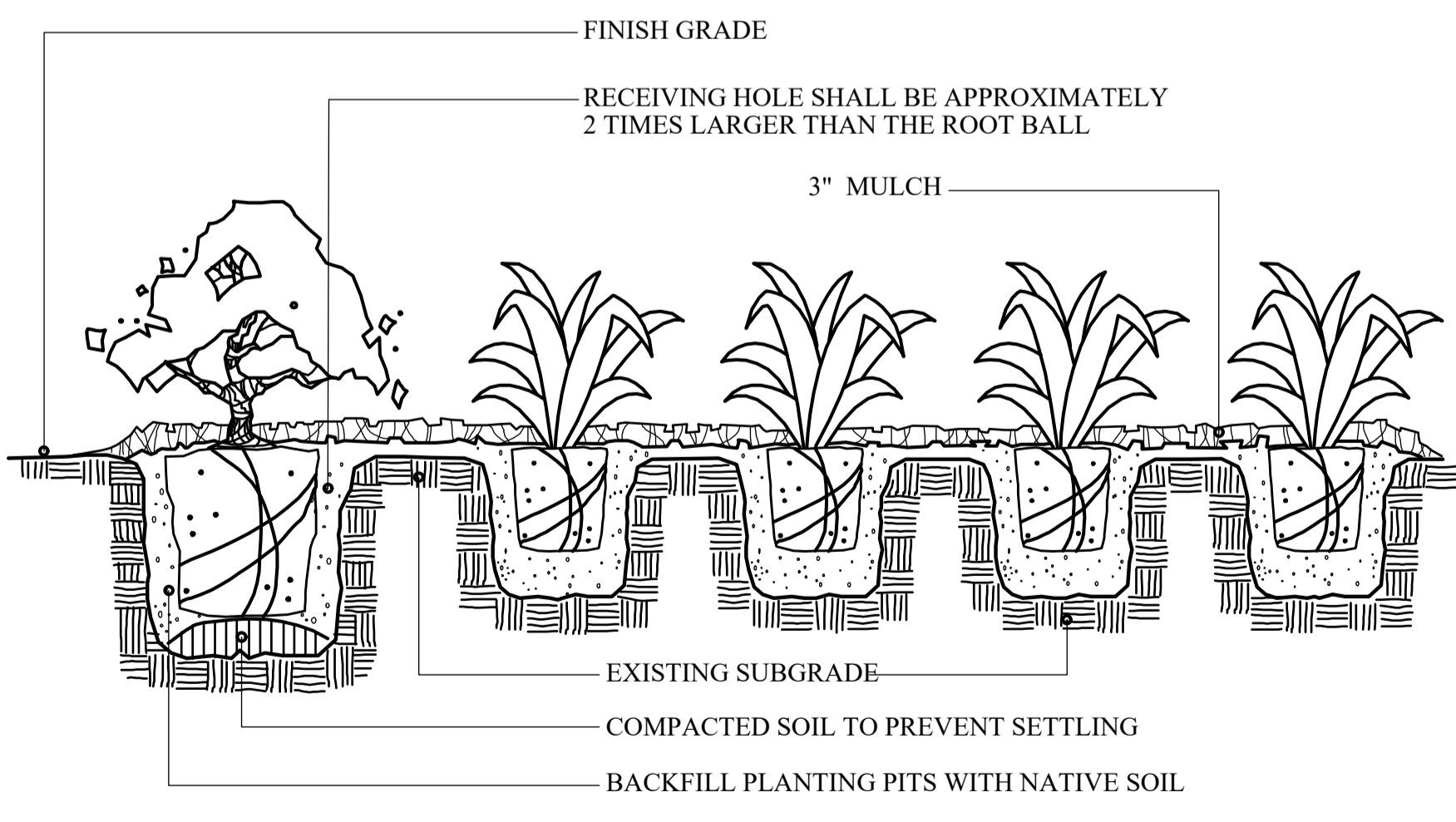


3  
L-3  
**B&B SHRUB PLANTING**  
SCALE: NTS



NOTES:  
1. PLACE PLANTS IN BED AS SHOWN, SPACING AS SPECIFIED IN PLANT SCHEDULE.  
2. GROUNDCOVER SHALL BE TRIANGULAR SPACED IN ROWS PARALLEL TO STRAIGHT EDGES AND SHALL BE EVENLY SPACED IN ROWS PARALLEL TO CURVE EDGES.

4  
L-3  
**GROUND COVER SPACING DETAIL**  
SCALE: NTS



NOTE: SHRUBS SHALL BE PLANTED A MINIMUM OF 1" & NO MORE THAN 2" ABOVE FINISH GRADE, DEPENDING UPON SITE CONDITIONS.

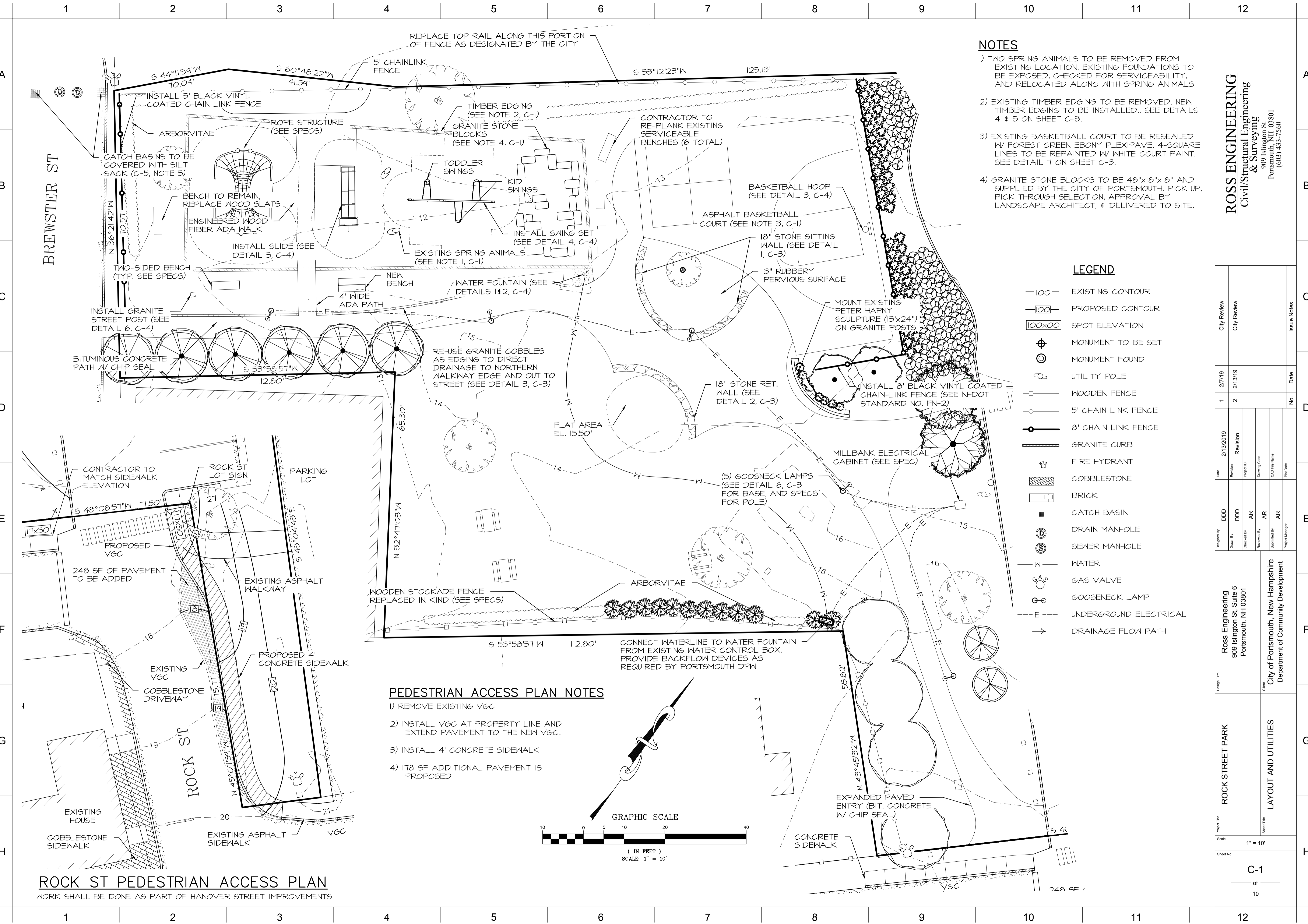
5  
L-3  
**SHRUB/GROUND COVER PLANTING DETAIL**  
SCALE: NTS

**City of Portsmouth Tree Planting Requirements**  
The base of the City of Portsmouth Tree Planting Requirements is the *ANSI A300 Part 6 Standard Practices for Planting and Transplanting*. ANSI A300 Part 6 lays out terms and basic standards as set forth by industry but it is NOT the "end all" for the City of Portsmouth. The following are the City of Portsmouth, NH Tree Planting Requirements that are in addition to or that go beyond the ANSI A300 Part 6.

1. All planting holes shall be dug by hand- **NO MACHINES**. The only exceptions are **new** construction where new planting pits, planting beds with granite curbing, and planting sites with Silva Cells are being created. If a machine is used to dig in any of these situations and planting depth needs to be raised the material in the bottom of the planting hole **MUST** be firmed with machine to prevent sinking of the root ball.
2. Remove Wire Basket entirely and upper 2/3 of Burlap shall be removed from the root ball **AND** planting hole.
3. The root ball of the tree shall be worked so that the root collar of the tree is visible and no girdling roots are present.
4. The root collar of the tree shall be 2"-3" above grade of planting hole for finished depth.
5. All plantings shall be backfilled with soil from the site and amended no more than 20% with Organic Compost. The only exceptions are new construction where engineered soil is being used in conjunction with Silva Cells and where new planting beds are being created.
6. All plantings shall be backfilled in three lifts and **ALL** lifts shall be watered so the planting will be set and free of air pockets- **NO EXCEPTIONS**.
7. An earth berm shall be placed around the perimeter of the planting hole except where curbed planting beds or pits are being used.
8. 2"-3" of mulch shall be placed over the planting area.
9. At the time the planting is complete the planting shall receive additional water to ensure complete hydration of the roots, backfill material and mulch layer.
10. Stakes and guys shall be used where appropriate and/or necessary. Guy material shall be non-damaging to the tree.
11. All planting stock shall be specimen quality, free of defects, and disease or injury. The City of Portsmouth, NH reserves the right to refuse/reject any plant material or planting action that fails to meet the standards set forth in the *ANSI A300 Part 6 Standard Practices for Planting and Transplanting* and/or The City of Portsmouth, NH Planting Requirements.



Design Firm	terra firma landscape architecture 163 a Court St. Portsmouth, NH
Client	City of Portsmouth, New Hampshire Department of Community Development
Project Title	ROCK STREET PARK
Sheet Title	PLANTING DETAILS
Scale	NOT TO SCALE
Sheet No.	L-3 of 10
Design By	TP
Drawn By	TC
Checked By	TP
Reviewed By	TP
Submitted By	TP
Project Manager	
Date	2/13/2019
Revision	ROCK ST
Project ID	rockst2
Drawing Code	00/00/00
City Review	2/13/19
City Review	2/17/19
No.	2
Date	2/17/19
Issue Notes	



**NOTES**

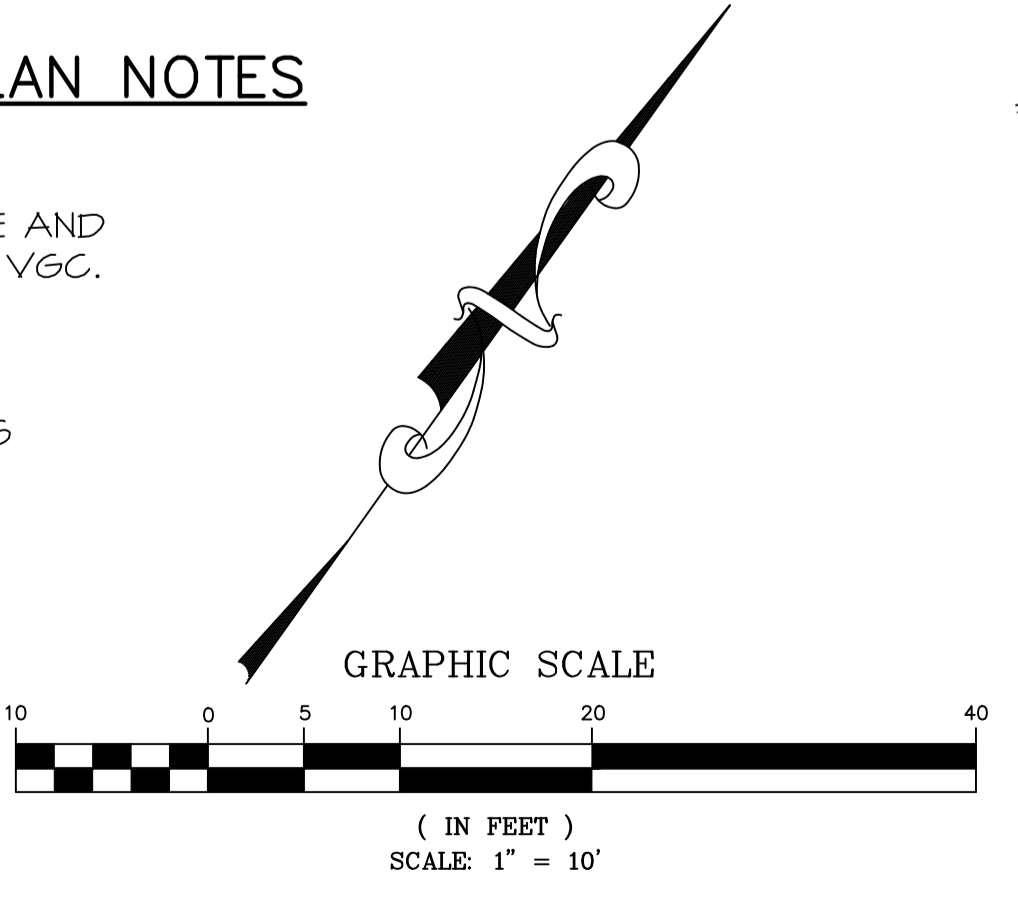
- 1) TWO SPRING ANIMALS TO BE REMOVED FROM EXISTING LOCATION. EXISTING FOUNDATIONS TO BE EXPOSED, CHECKED FOR SERVICEABILITY, AND RELOCATED ALONG WITH SPRING ANIMALS
- 2) EXISTING TIMBER EDGING TO BE REMOVED. NEW TIMBER EDGING TO BE INSTALLED. SEE DETAILS 4 & 5 ON SHEET C-3.
- 3) EXISTING BASKETBALL COURT TO BE RESEALED W/ FOREST GREEN EBONY PLEXIPAVE. 4-SQUARE LINES TO BE REPAINTED W/ WHITE COURT PAINT. SEE DETAIL 7 ON SHEET C-3.
- 4) GRANITE STONE BLOCKS TO BE 48"x18"x18" AND SUPPLIED BY THE CITY OF PORTSMOUTH. PICK UP, PICK THROUGH SELECTION, APPROVAL BY LANDSCAPE ARCHITECT, & DELIVERED TO SITE.

**LEGEND**

- 100 — EXISTING CONTOUR
- 100 — PROPOSED CONTOUR
- 100x00 SPOT ELEVATION
- ⊕ MONUMENT TO BE SET
- ⊙ MONUMENT FOUND
- ⊕ UTILITY POLE
- WOODEN FENCE
- 5' CHAIN LINK FENCE
- 8' CHAIN LINK FENCE
- ▬ GRANITE CURB
- ⊕ FIRE HYDRANT
- ▨ COBBLESTONE
- ▨ BRICK
- CATCH BASIN
- ⊕ DRAIN MANHOLE
- ⊕ SEWER MANHOLE
- W — WATER
- ⊕ GAS VALVE
- ⊕ GOOSENECK LAMP
- E --- UNDERGROUND ELECTRICAL
- DRAINAGE FLOW PATH

**PEDESTRIAN ACCESS PLAN NOTES**

- 1) REMOVE EXISTING VGC
- 2) INSTALL VGC AT PROPERTY LINE AND EXTEND PAVEMENT TO THE NEW VGC.
- 3) INSTALL 4' CONCRETE SIDEWALK
- 4) 178 SF ADDITIONAL PAVEMENT IS PROPOSED



**ROSS ENGINEERING**  
Civil/Structural Engineering  
& Surveying  
909 Islington St  
Portsmouth, NH 03801  
(603) 433-7560

Date	Revision	Project ID	Drawing Code	CAD File Name	Plot Date
2/13/2019	Revision				

City Review	City Review	Issue Notes
2/7/19	2/13/19	

Designed By	Drawn By	Checked By	Reviewed By	Submitted By	Project Manager
DDD	DDD	AR	AR	AR	

Design Firm: **Ross Engineering**  
909 Islington St, Suite 6  
Portsmouth, NH 03801

Client: **City of Portsmouth, New Hampshire**  
Department of Community Development

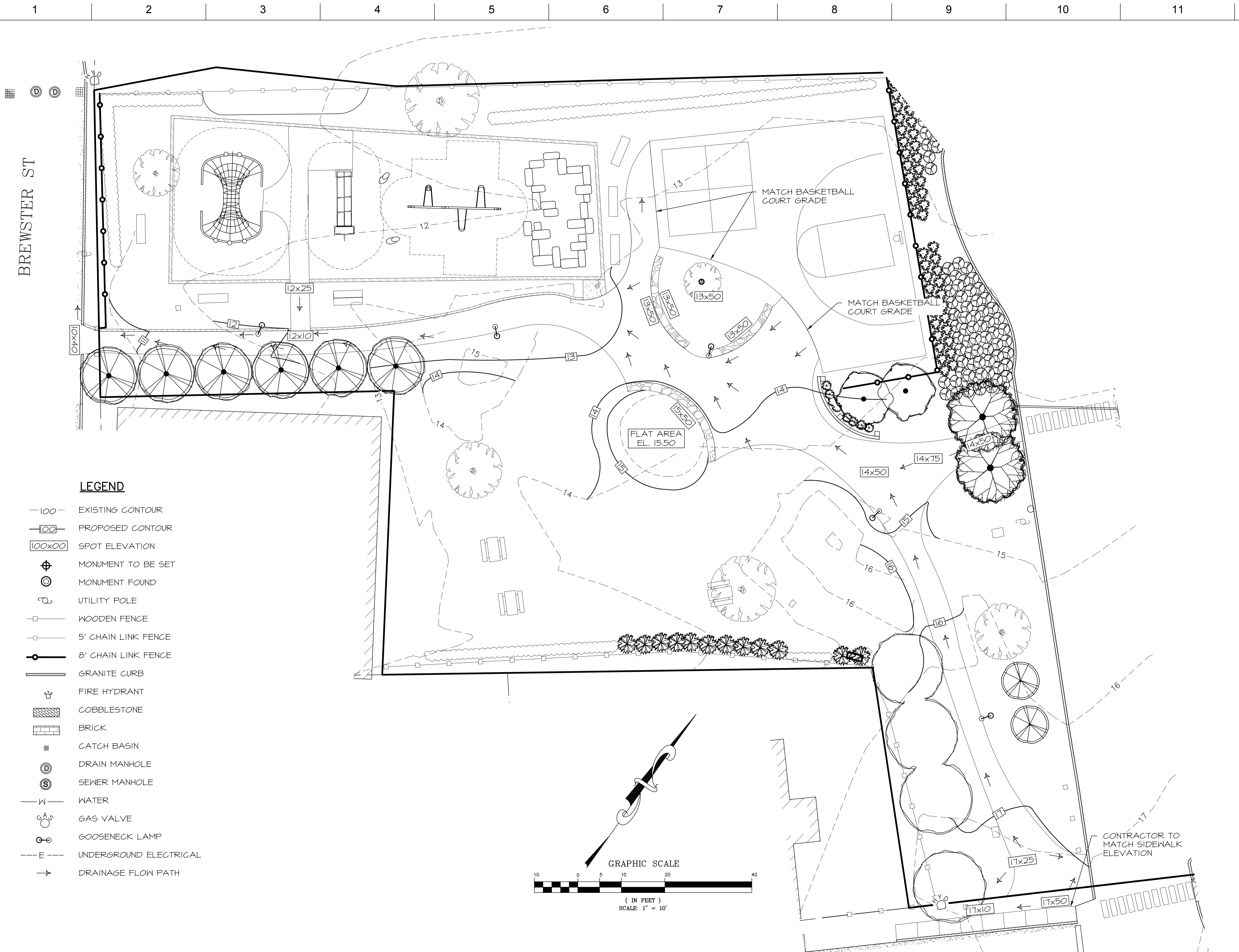
Project Title: **ROCK STREET PARK**

Sheet Title: **LAYOUT AND UTILITIES**

Scale: 1" = 10'

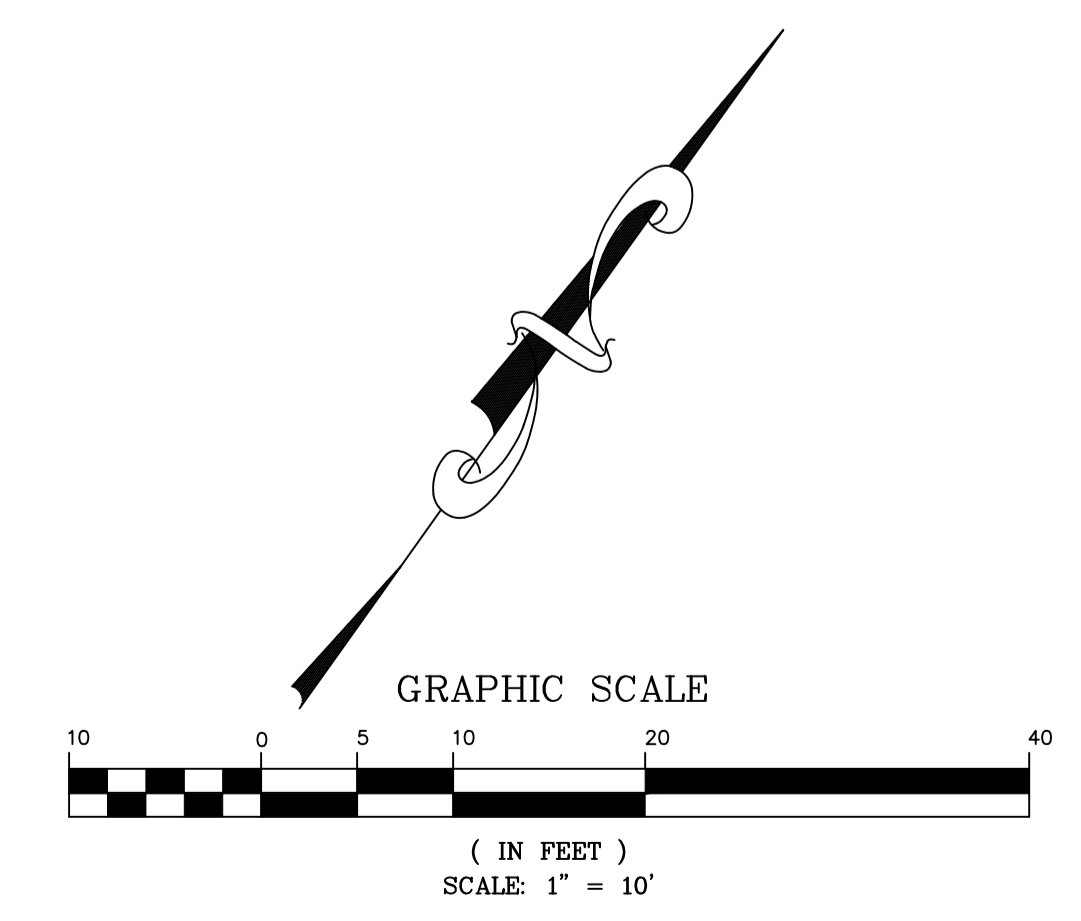
Sheet No. **C-1**

**ROCK ST PEDESTRIAN ACCESS PLAN**  
WORK SHALL BE DONE AS PART OF HANOVER STREET IMPROVEMENTS



**LEGEND**

- 100 — EXISTING CONTOUR
- 00 — PROPOSED CONTOUR
- 100x00 SPOT ELEVATION
- ⊕ MONUMENT TO BE SET
- ⊙ MONUMENT FOUND
- ⊕ UTILITY POLE
- WOODEN FENCE
- 5' CHAIN LINK FENCE
- 8' CHAIN LINK FENCE
- GRANITE CURB
- ⊕ FIRE HYDRANT
- ▨ COBBLESTONE
- ▨ BRICK
- CATCH BASIN
- ⊙ DRAIN MANHOLE
- ⊙ SEWER MANHOLE
- W — WATER
- ⊕ GAS VALVE
- ⊕ GOOSENECK LAMP
- E --- UNDERGROUND ELECTRICAL
- DRAINAGE FLOW PATH



**ROSS ENGINEERING**  
Civil/Structural Engineering  
& Surveying  
909 Islington St  
Portsmouth, NH 03801  
(603) 433-7560

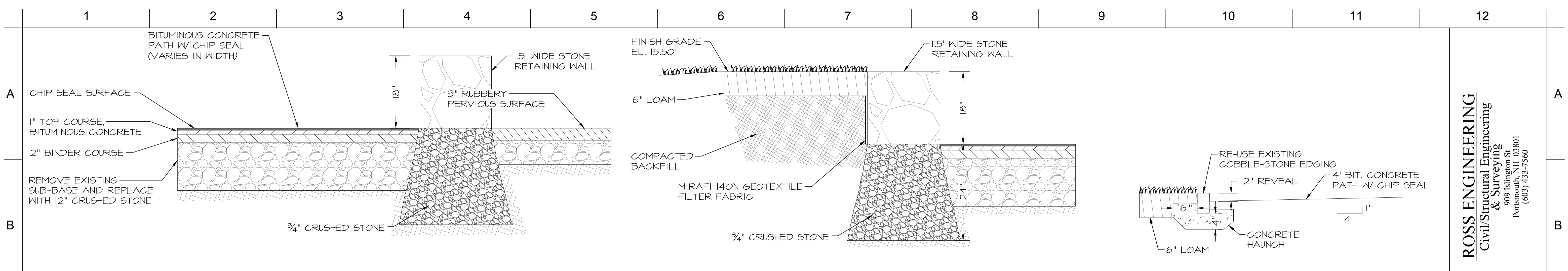
City Review	2/7/19	No.	Date
City Review	2/13/19		
Date	2/13/2019		
Revision	Revision		
Project ID			
Drawing Code			
CAD File Name			
Plot Date			
Designed By	DDD		
Drawn By	DDD		
Checked By	AR		
Reviewed By	AR		
Submitted By	AR		
Project Manager			

Design Firm: **Ross Engineering**  
909 Islington St, Suite 6  
Portsmouth, NH 03801  
Client: **City of Portsmouth, New Hampshire**  
Department of Community Development

Project Title: **ROCK STREET PARK**  
Sheet Title: **GRADING AND DRAINAGE PLAN**

Scale: 1" = 10'  
Sheet No.: **C-2**  
of  
10

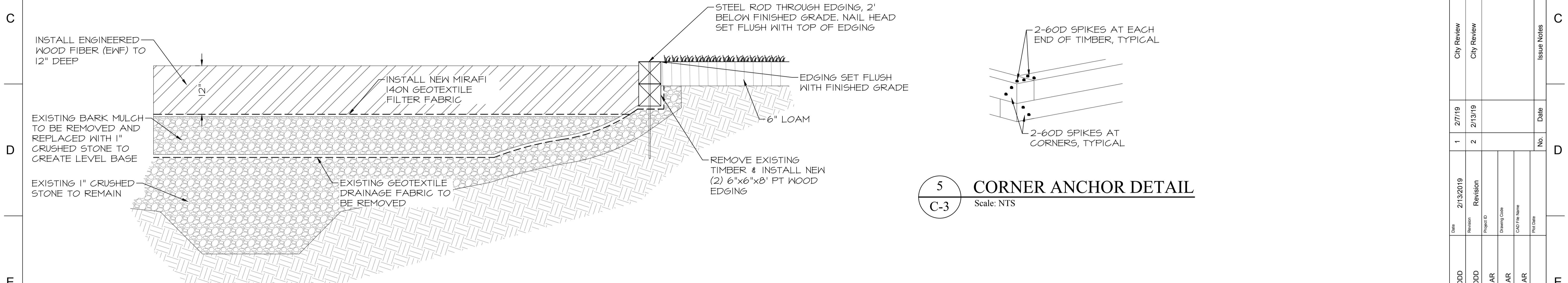




**1 SITTING WALL DETAIL**  
Scale: 1"=1'  
C-3

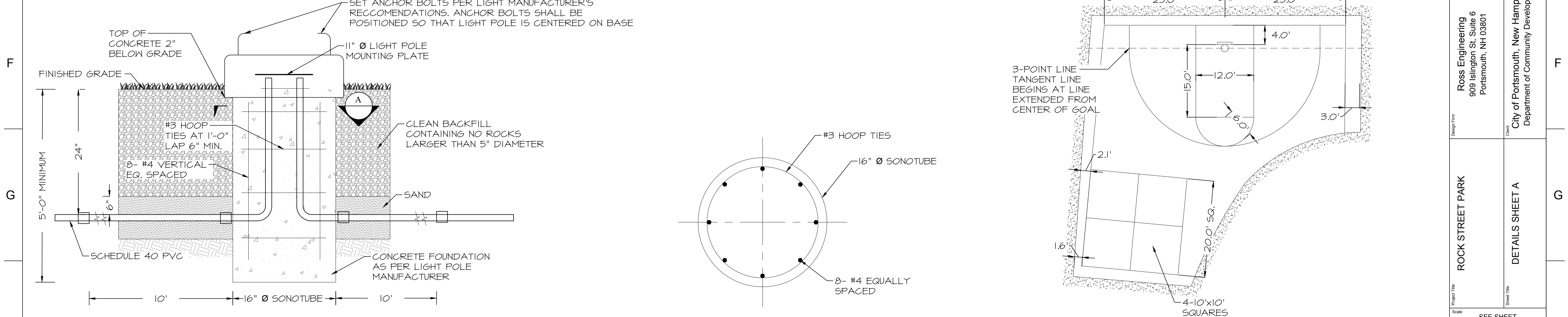
**2 RETAINING WALL DETAIL**  
Scale: 1"=1'  
C-3

**3 COBBLESTONE EDGING DETAIL**  
Scale: NTS  
C-3



**4 PLAYGROUND & EDGING DETAIL**  
Scale: 1"=1'  
C-3

**5 CORNER ANCHOR DETAIL**  
Scale: NTS  
C-3



**6 LIGHT FIXTURE BASE DETAIL**  
Scale: NTS  
C-3

**A SECTION**  
Scale: NTS  
C-3

**7 COURT PAINTING DETAIL**  
Scale: 1"=10'  
C-3

**ROSS ENGINEERING**  
Civil/Structural Engineering  
& Surveying  
909 Islington St.  
Portsmouth, NH 03801  
(603) 433-7560

City Review	City Review	Issue Notes
2/7/19	2/13/19	Date
1	2	No.
Date	Revision	Project ID
2/13/2019	Revision	Drawing Code
DDD	AR	CAD File Name
Designed By	Reviewed By	Plot Date
Drawn By	Submitted By	Project Manager
Checked By	AR	

Design Firm: **Ross Engineering**  
909 Islington St. Suite 6  
Portsmouth, NH 03801

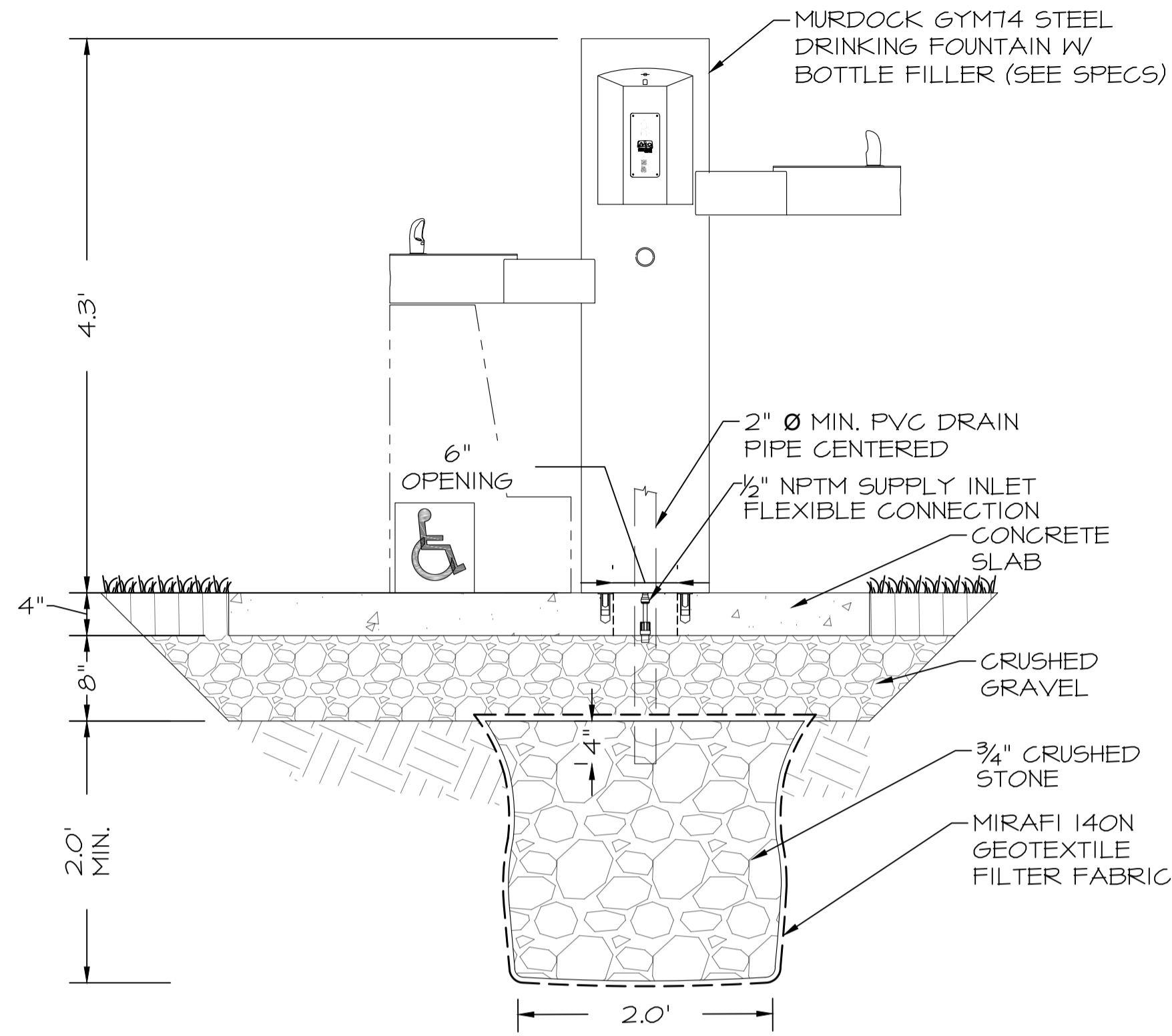
Client: **City of Portsmouth, New Hampshire**  
Department of Community Development

Project Title: **ROCK STREET PARK**

Sheet Title: **DETAILS SHEET A**

Scale: SEE SHEET

Sheet No.: **C-3**  
of  
10

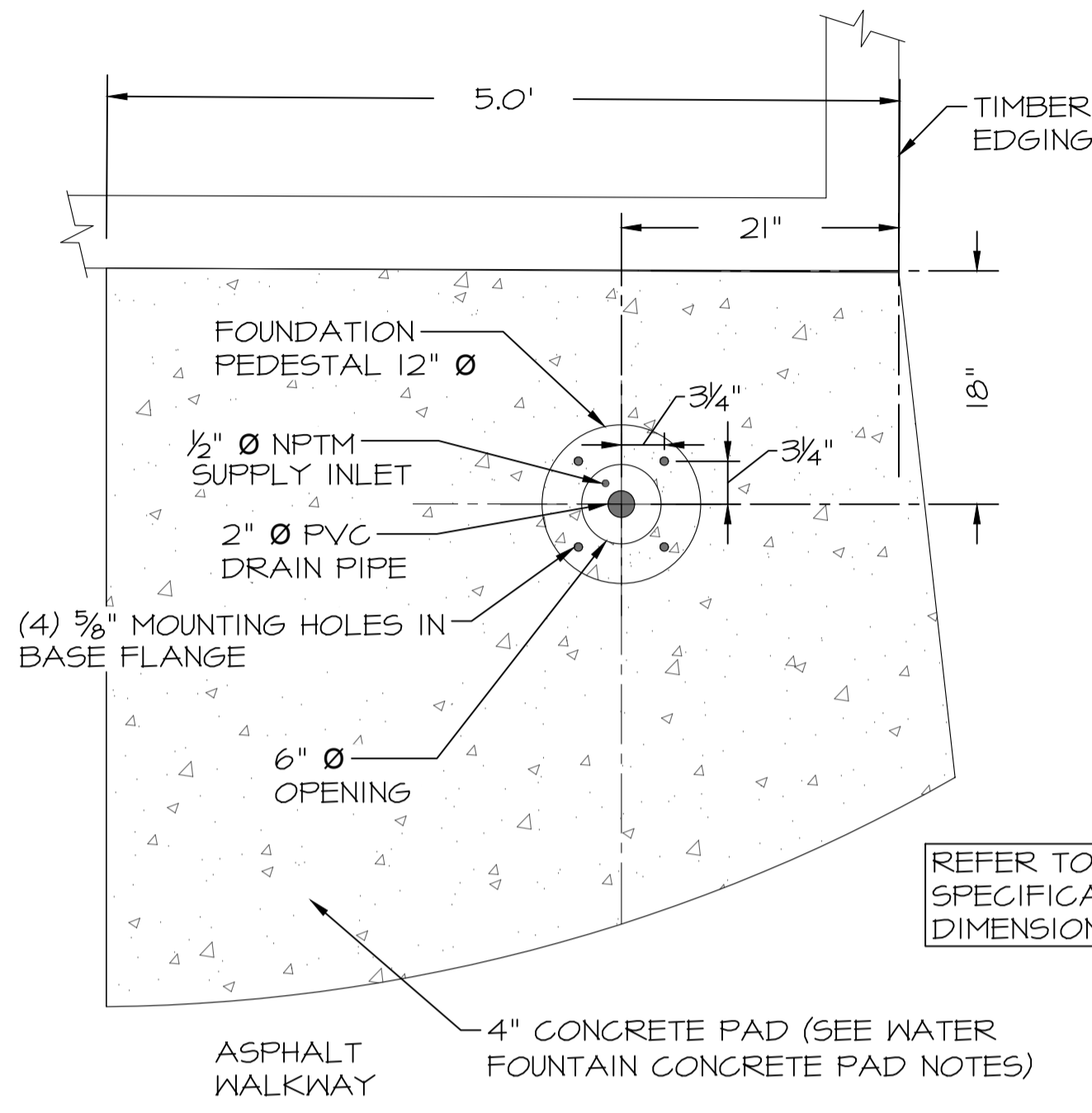


**1 WATER FOUNTAIN DETAIL**  
 Scale: 1"=1'  
 C-4

**WATER FOUNTAIN CONCRETE PAD NOTES**

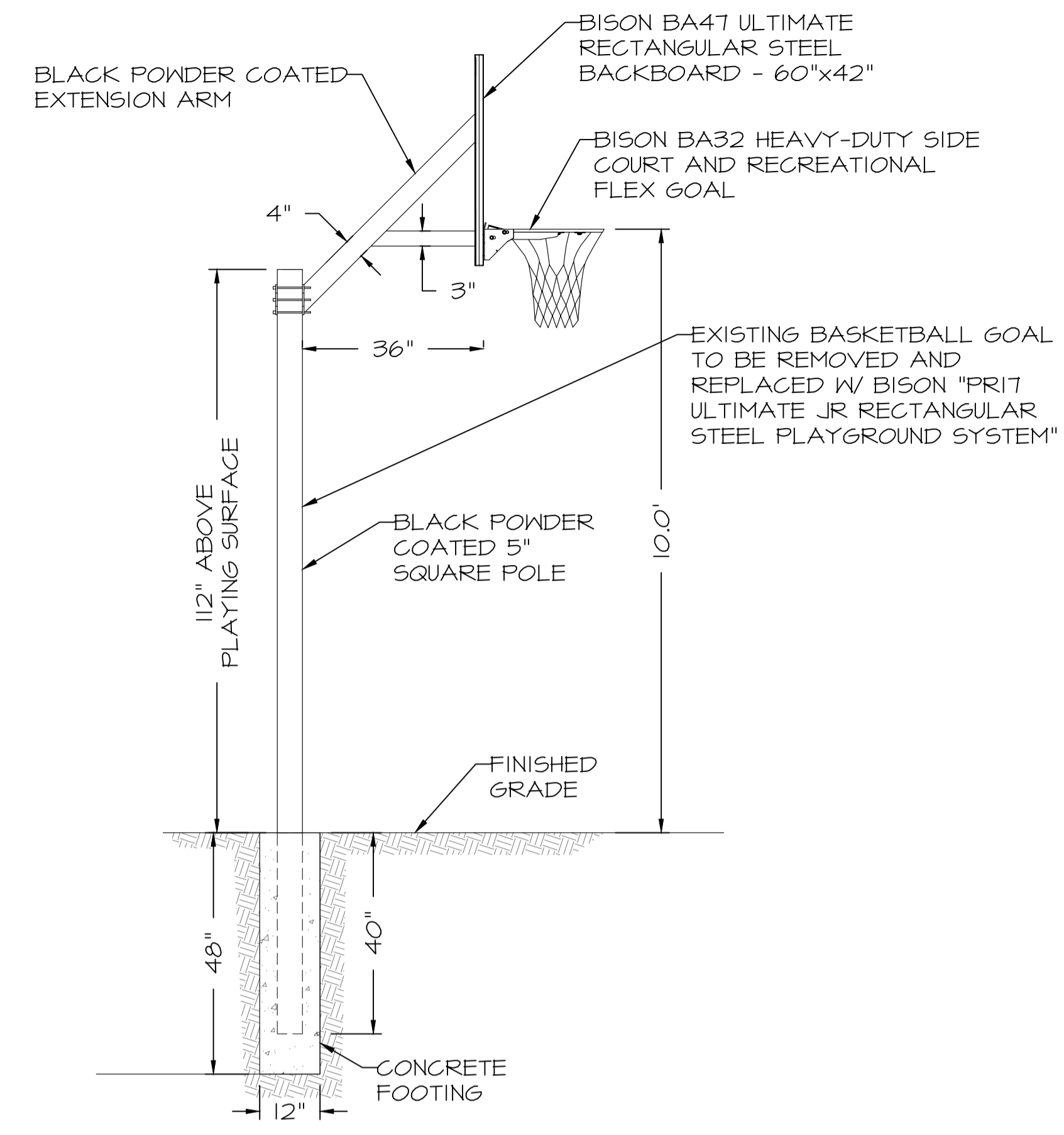
ALL CONCRETE MUST BE 4000 PSI, 5-7% AIR ENTRAINED, FIBER REINFORCED.

THE CONCRETE PAD WILL HAVE A LIGHT BROOM FINISH

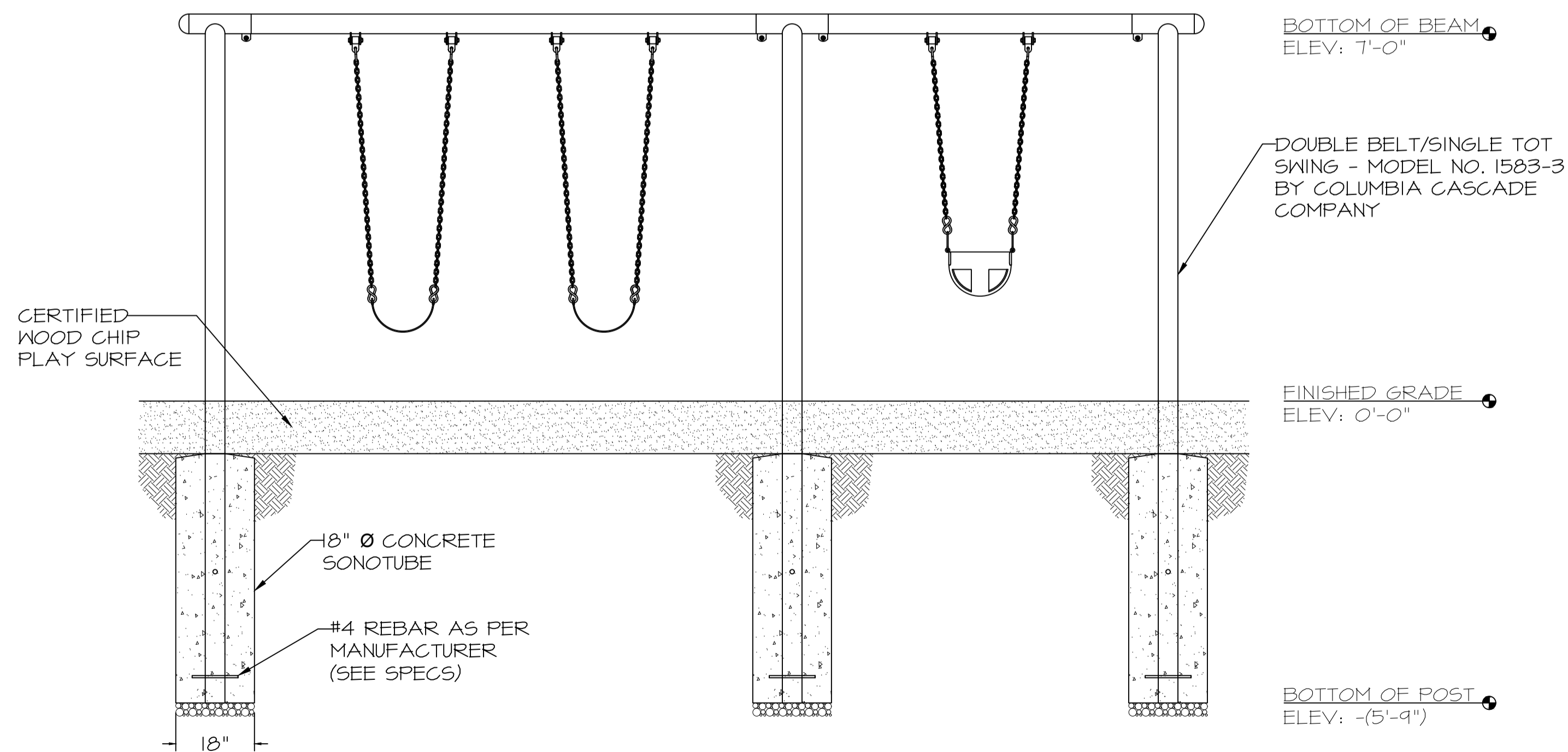


**2 WATER FOUNTAIN PLAN VIEW**  
 Scale: 1"=1'  
 C-4

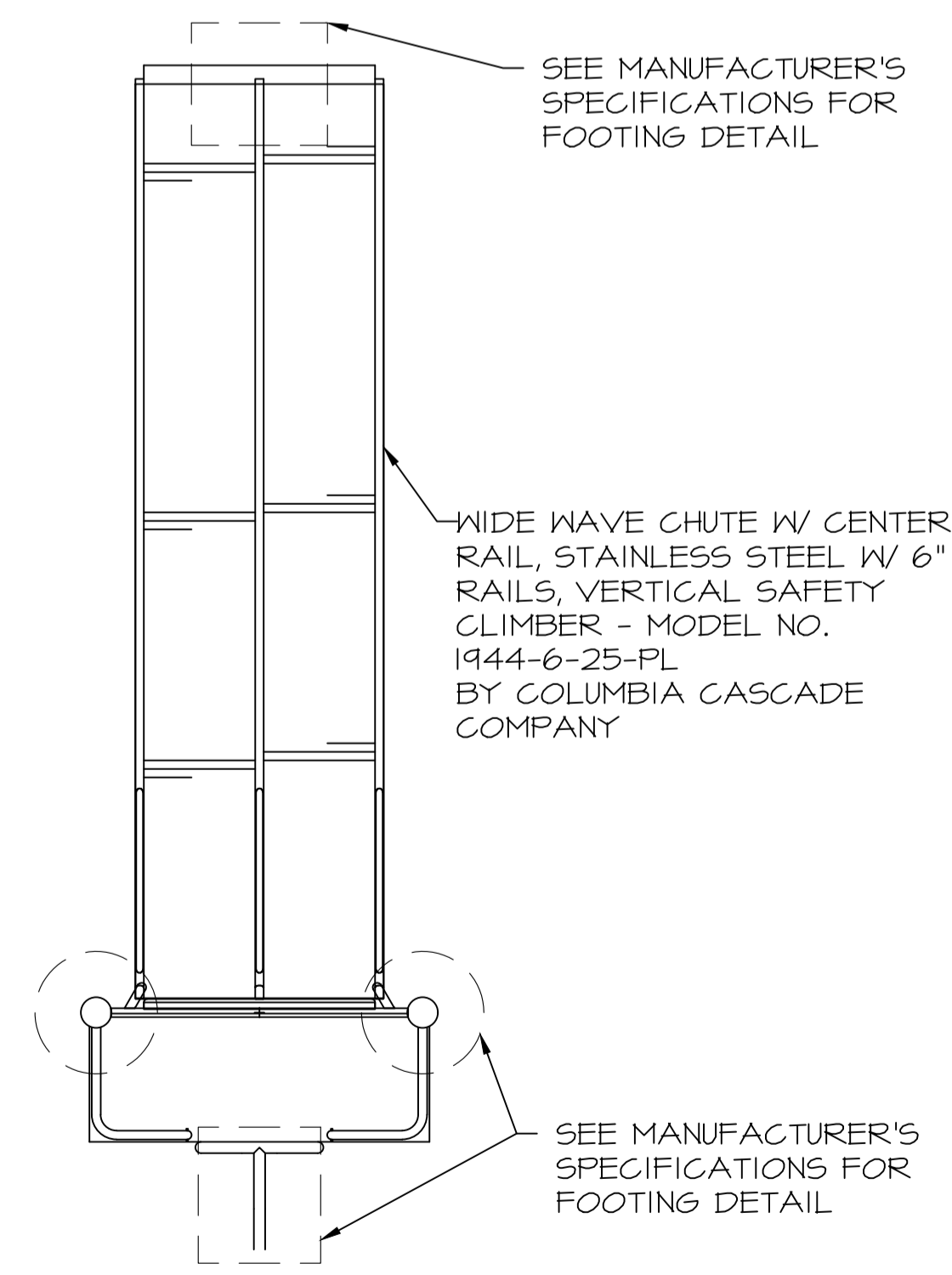
EXACT PLACEMENT PER LANDSCAPE ARCHITECT



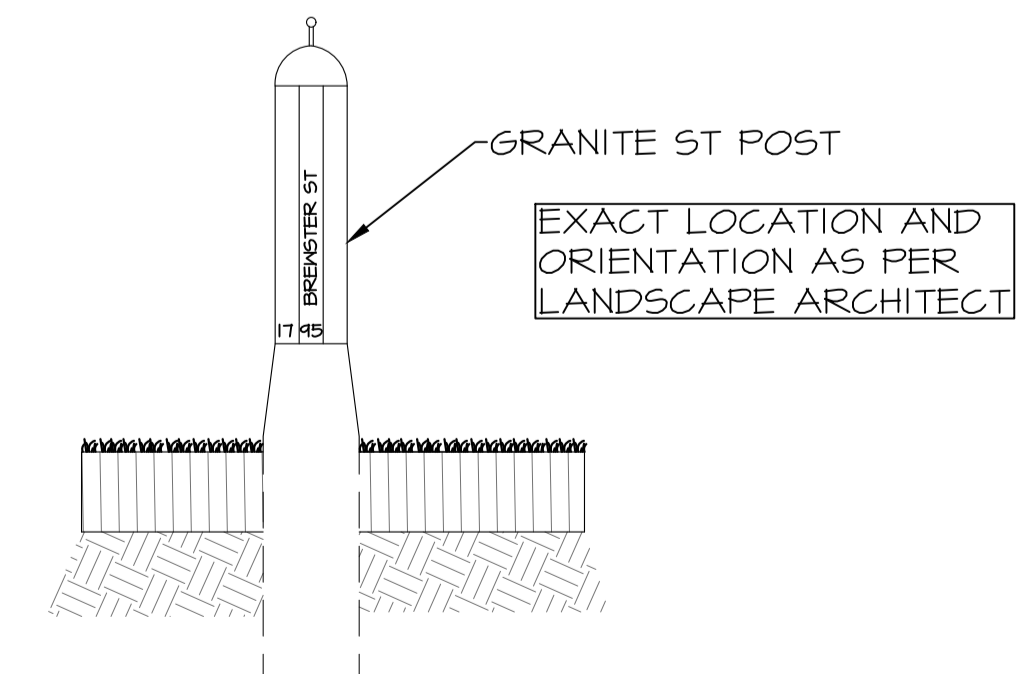
**3 BASKETBALL POST**  
 Scale: 1"=2'  
 C-4



**4 SWINGSET DETAIL**  
 Scale: 1"=2'  
 C-4



**5 DOUBLE SLIDE DETAIL**  
 Scale: 1"=2'  
 C-4



**6 HISTORIC GRANITE BREWSTER ST PILLAR**  
 Scale: NTS  
 C-4

**ROSS ENGINEERING**  
 Civil/Structural Engineering & Surveying

909 Islington St  
 Portsmouth, NH 03801  
 (603) 433-7560

City Review	2/27/19	City Review	2/13/19	No.	Date	Issue Notes
1	2/27/19	2	2/13/19			
Date	2/13/2019	Revision				
Designed By	DDD	Checked By	AR			
Drawn By	DDD	Reviewed By	AR			
Project ID		Submitted By	AR			
Drawing Code		Project Manager				
CAD File Name						
Plot Date						

Design Firm  
 Ross Engineering  
 909 Islington St, Suite 6  
 Portsmouth, NH 03801

Client  
 City of Portsmouth, New Hampshire  
 Department of Community Development

Project Title  
 ROCK STREET PARK

Sheet Title  
 DETAILS SHEET B

Scale  
 SEE SHEET

Sheet No.  
 C-4  
 of  
 10

