

September 6, 2007  
City of Portsmouth, New Hampshire  
Department of Public Works

**Addendum #4**  
**Bid #36-07**  
**High Hanover Parking Facility Stairtower Roof Project**

This addendum forms part of the original document marked Bid #36-07. The following invitation replaces the original invitation.

**High Hanover Parking Facility Stairtower Roof Project**

**INVITATION TO BID**

**Sealed** bid proposals, **plainly marked**, (High Hanover Parking Facility Stairtower Roof Project, Bid Proposal #36-07) **on the outside of the mailing envelope as well as the sealed bid envelope**, addressed to the Finance/Purchasing Department, City Hall, 1 Junkins Avenue, Portsmouth, New Hampshire, 03801, will be accepted until September 26, 2007 @ 2:00 p.m. at which time all bids will be publicly opened and read aloud.

The work shall consist of the design and installation of Atas Aluminum Corp. PC Systems – Snap-On Seam Roofing system, along with miscellaneous demolition and finishing work, to match the existing stairtower roofs installed during the 2000 Parking Garage Expansion Project.

Specifications may be obtained from the Finance/Purchasing Department on the third floor at the above address, by visiting our website at [www.cityofportsmouth.com](http://www.cityofportsmouth.com) or by calling the Purchasing Clerk at 603-610-7227.

Completion date will be 45 calendar days from the date of the Notice to Proceed.  
Liquidated damages shall be assessed at \$50.00 per day.

Bidders must determine the quantities of work required and the conditions under which the work will be performed.

The City of Portsmouth reserves the right to reject any or all bids, to waive technical or legal deficiencies, to re-bid, and to accept any bid that it may deem to be in the best interest of the City.

Each Bidder shall furnish a bid security in the amount of ten percent (10%) of the bid. The Bid Security may be in the form of a certified check drawn upon a bank within the State of New Hampshire or a bid bond executed by a surety company authorized to do business in the State of New Hampshire, made payable to the City of Portsmouth, N.H.

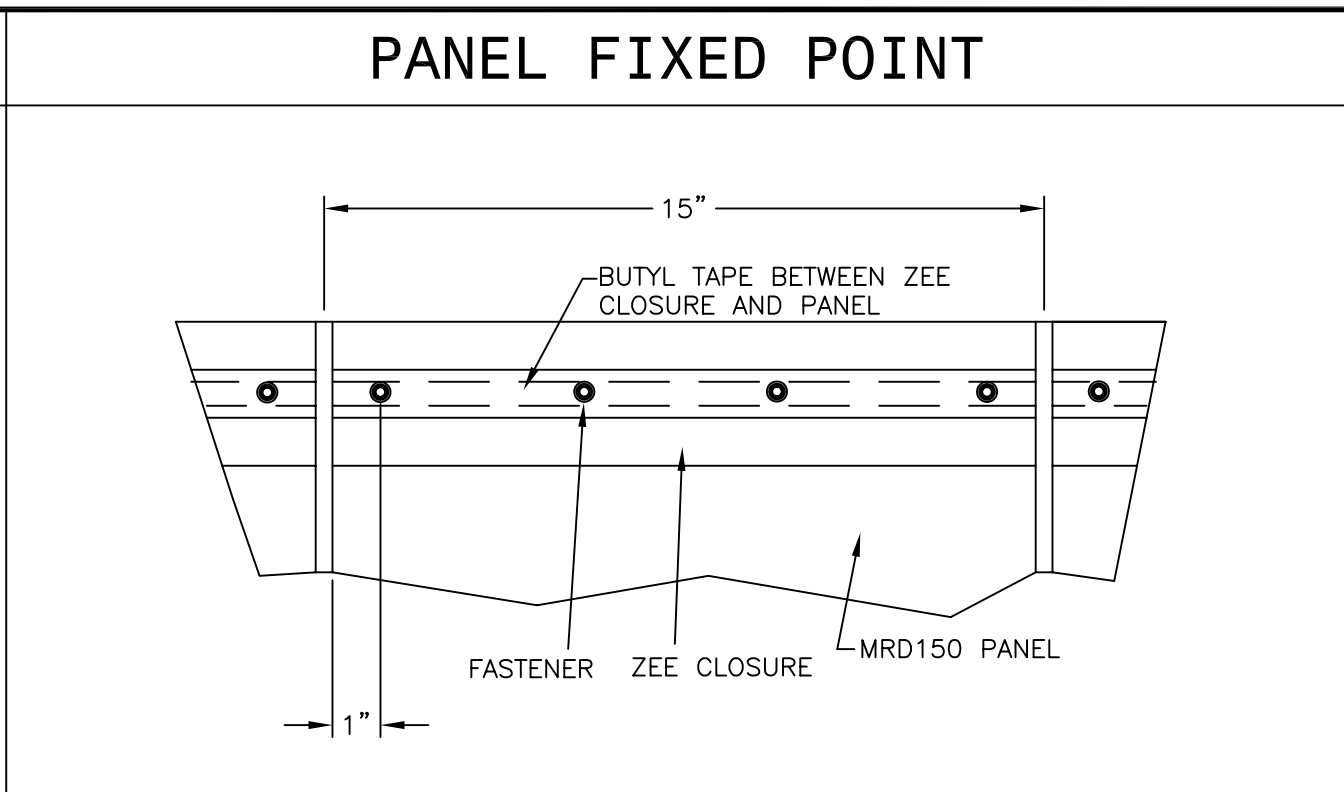
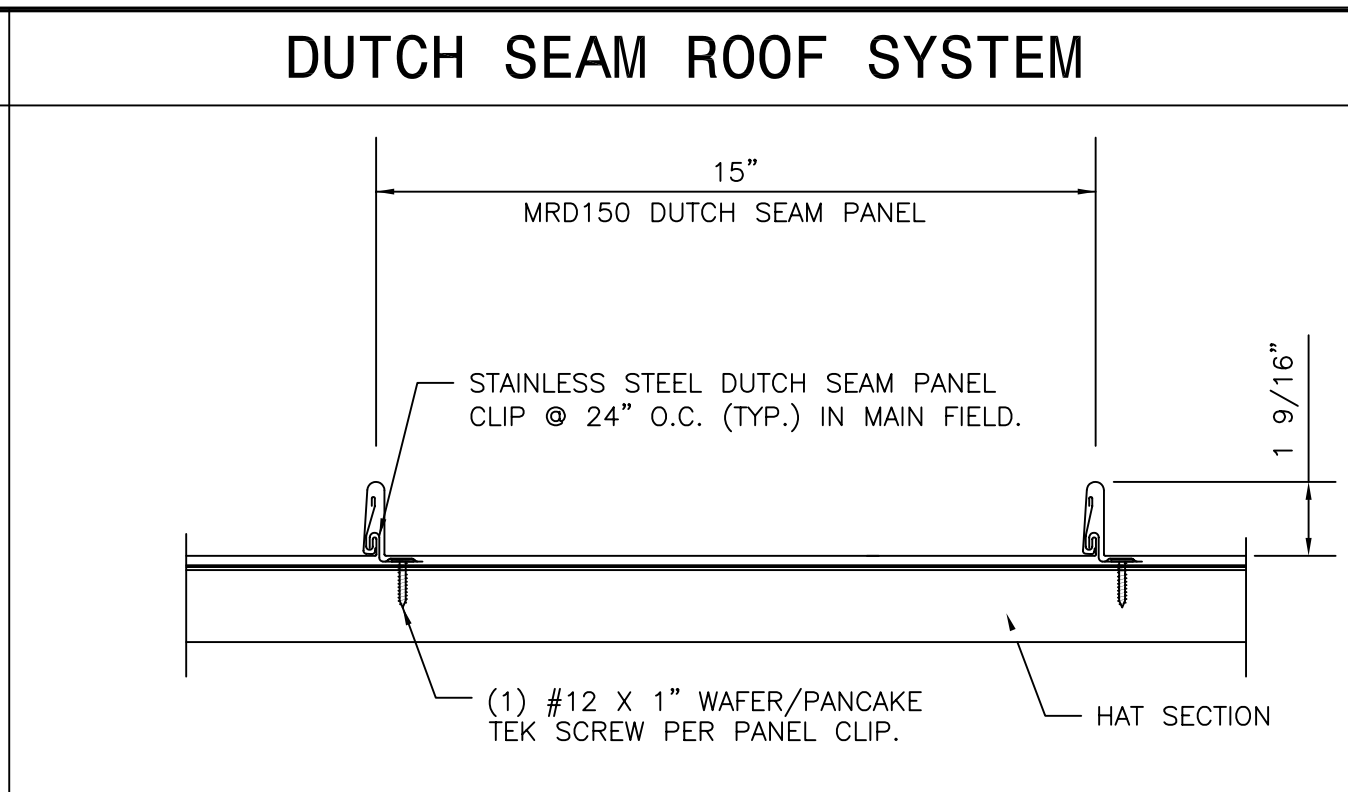
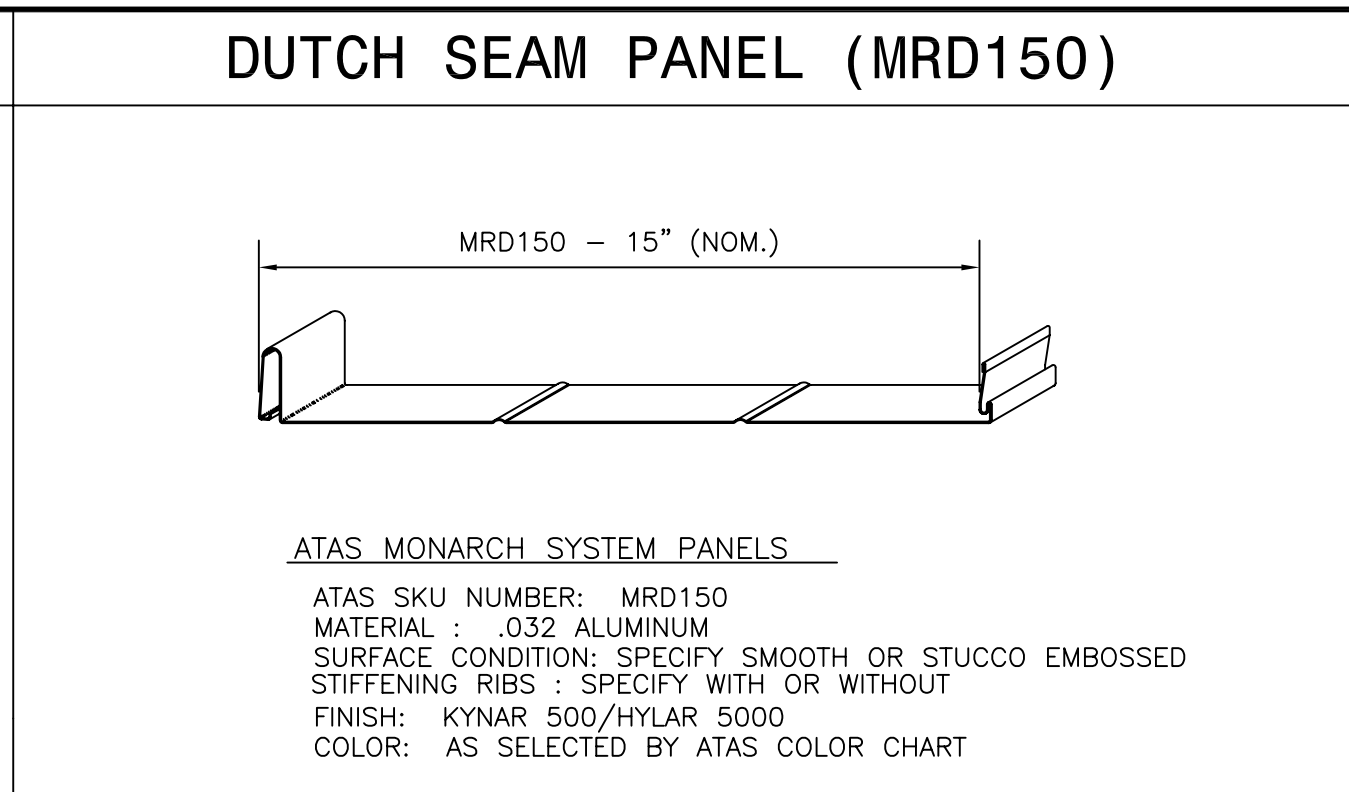
Design drawings for the roofs over stairtowers one and two at the High Hanover Parking Garage will be provided as part of addendum #4. **Please acknowledge receipt of this addendum within your proposal. Failure to do so may subject a vendor to disqualification.**

**SYSTEM DESCRIPTION**

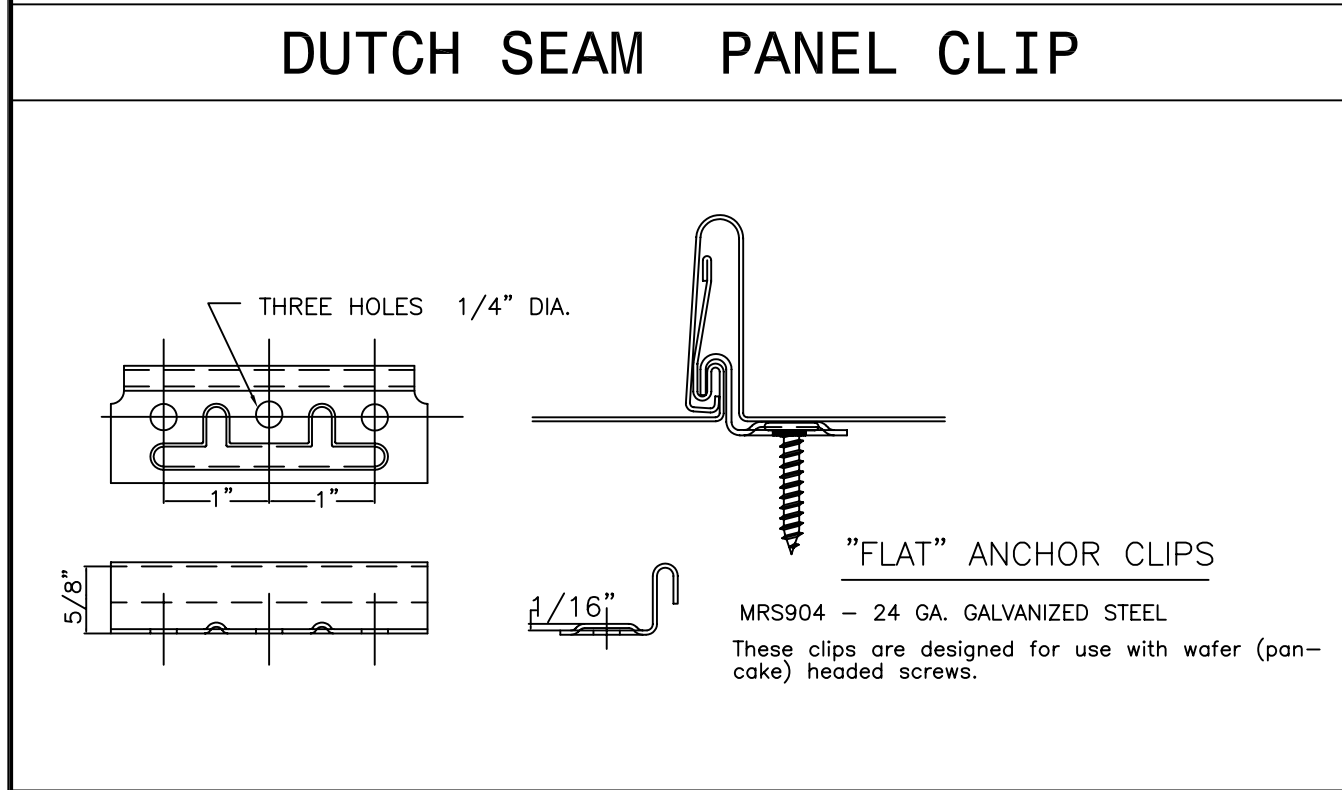
**ROOF PANEL**  
 ROOF PANEL, .032 ALUMINUM MRD150, 1 9/16" HIGH 15" WIDE "DUTCH SEAM" PANEL, AS MANUFACTURED BY ATAS INTERNATIONAL, INC.

**FLASHING**  
 SAME MATERIAL AND FINISH AS ADJACENT SYSTEM, UNLESS NOTED OTHERWISE.

**FINISH FOR PANELS & FLASHING**  
 COLOR TO BE SELECTED FROM ATAS STANDARD COLOR CHART  
 FACE SIDE FINISH TO BE, KYNAR 500, STANDARD DFT OF 1.0 MIL. WITH STANDARD GLOSS.  
 BACK SIDE FINISH TO BE, STANDARD WASHCOAT WITH A DFT OF .5 MIL.



- GENERAL NOTES:**
- 1) ALL MEASUREMENTS MUST BE FIELD AND/OR CUSTOMER VERIFIED.
  - 2) FABRICATION OF MATERIALS WILL NOT BEGIN UNTIL THESE SHOP DRAWINGS ARE APPROVED BY THE CUSTOMER AND RETURNED TO ATAS INTERNATIONAL, INC. (ATAS) AS NOTED THEREON "APPROVED" OR APPROVAL LETTER IS RECEIVED.
  - 3) THE ILLUSTRATIONS SHOWN HEREON ARE SUGGESTED STYLES/SHAPES ONLY AND ATAS CAN NOT ASSUME ANY RESPONSIBILITY FOR ACTUAL SELECTION OR INSTALLATION OF SAME.
  - 4) THE SUBSTRATES TO WHICH METAL PANELS/TRIMS ARE BEING APPLIED SHOULD BE INSPECTED PRIOR TO INSTALLATION OF SAME AND ANY INCONSISTENCIES OF THE SUBSTRATE (SUCH AS "OUT-OF-PLUMB", "NOT-TRUE-AND LEVEL" ETC.) SHOULD BE DULY NOTED AND SUBSEQUENTLY REPORTED TO THE PROPER PARTY(IES) FOR CORRECTIVE ACTION. ANY INCONSISTENCIES IN THE SUBSTRATE MAY CAUSE "OIL-CANNING" AND OTHER SUCH RELATED PROBLEMS WITH THE APPLIED PANELS/TRIM.
  - 5) PLEASE BE AWARE THAT THESE SHOP DRAWINGS ARE BASED SOLELY UPON ATAS' INTERPRETATION OF THE PLANS/SPECIFICATIONS AS SUBMITTED. WRITTEN VERIFICATION AND APPROVAL OF THIS GLEANED DATA MUST BE MADE BEFORE AN ACTUAL PURCHASE AGREEMENT IS ACCEPTED. ANY VARIATIONS FROM THIS MATERIAL/PARTS REFERENCE LISTS, DUE TO DESIGN CHANGES, FIELD CONDITIONS, AND/OR DAMAGES OCCURRED DURING INSTALLATION MAY RESULT IN A PRICE VARIATION.
  - 6) ALL FRAMING TO BE AS PER THE ARCHITECTURAL DRAWINGS AND/OR PREVIOUSLY FORWARDED DOCUMENTS/SKETCHES AND/OR STANDARD CONSTRUCTION PRACTICES UNLESS NOTED HEREIN AS "REQUIRED FOR PANEL SYSTEM".
  - 7) THE CONTRACTOR MUST FOLLOW ALL INSTALLATION INSTRUCTIONS AS SHOWN IN THE "PANEL DESIGN/INSTALLATION GUIDE" UNLESS INSTRUCTED OTHERWISE ON THESE PLANS.
  - 8) THE CONTRACTOR MUST PROVIDE ATAS THE EXACT NUMBER, SIZE AND LOCATION OF ALL ROOF PENETRATIONS AND ROOF TOP EQUIPMENT.
  - 9) THE CONTRACTOR MUST INSTALL ONLY NON-PENETRATING SNOW RETENTION DEVICES ON THE ROOF PANELS. FOLLOW ALL INSTRUCTIONS PROVIDED BY THE SNOW RETENTION MANUFACTURER FOR INSTALLATION. (IF SNOW RETENTION IS REQUIRED)



FOR APPROVAL ONLY - NOT FOR CONSTRUCTION

**NOTE:**  
 CONTRACTOR TO VERIFY ALL DIMENSIONS AND ROOF PITCH ANGLES.

TO: ATAS INTERNATIONAL, INCORPORATED

I/WE HAVE REVIEWED THESE DRAWINGS AND PARTS DRAWINGS/SKETCHES AND:

APPROVE SAME FOR PRODUCTION THEREOF PENDING APPROVED ORDER.

APPROVE PENDING CHANGES AS NOTED HEREIN.

APPROVE PENDING ANY CHANGES TO FOLLOW AFTER FIELD VERIFICATION IS MADE RE TRIMS AND/OR PANELS REQUIRED.

DO NOT APPROVE. WANT CHANGES MADE AS INDICATED HEREIN AND RE-SUBMITTED.

DO NOT APPROVE - SEE ATTACHED REASON FOR SAME.

SIGNATURE: \_\_\_\_\_

PLEASE LETTER NAME: \_\_\_\_\_

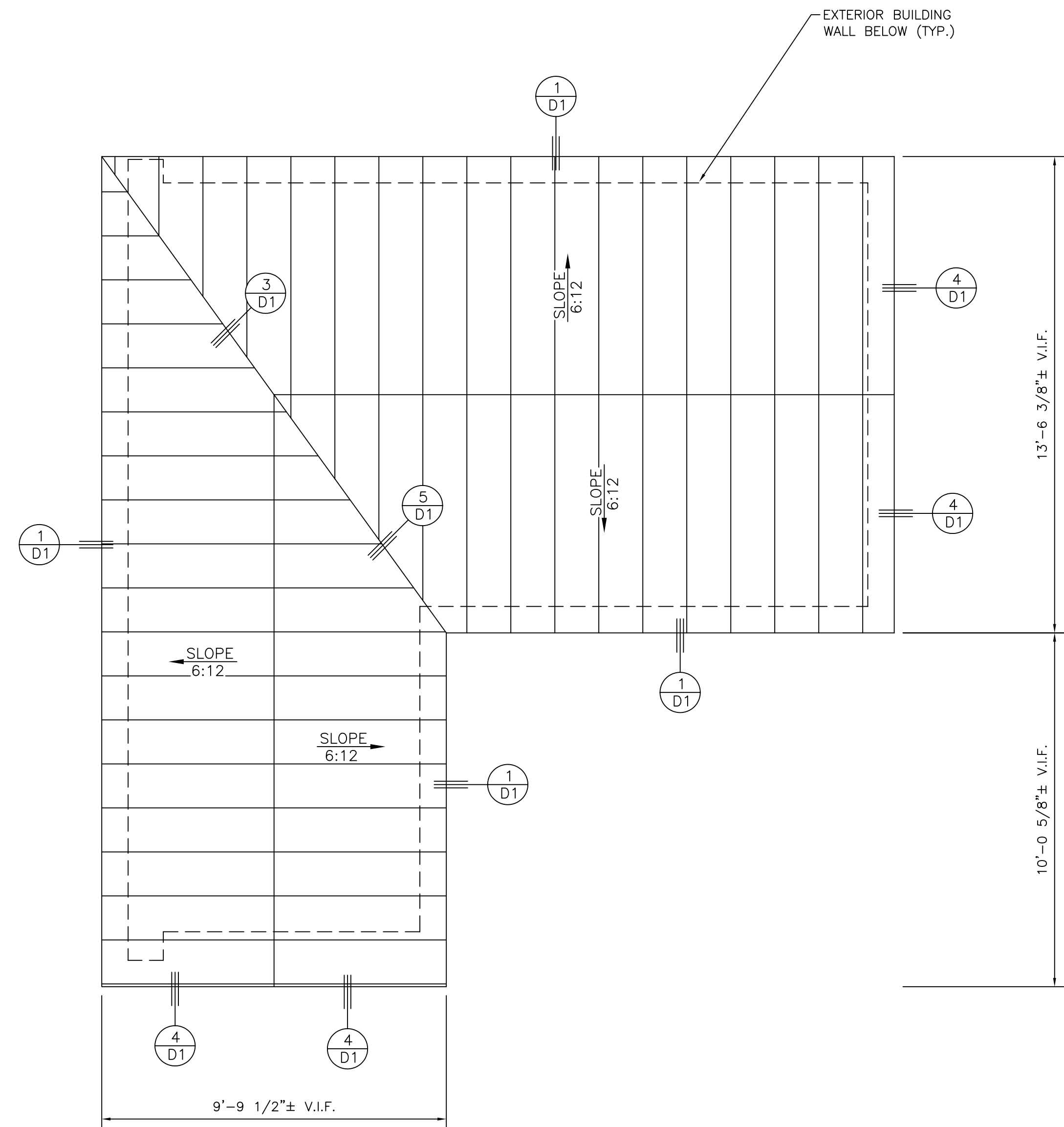
COMPANY: \_\_\_\_\_

DATE: \_\_\_\_\_

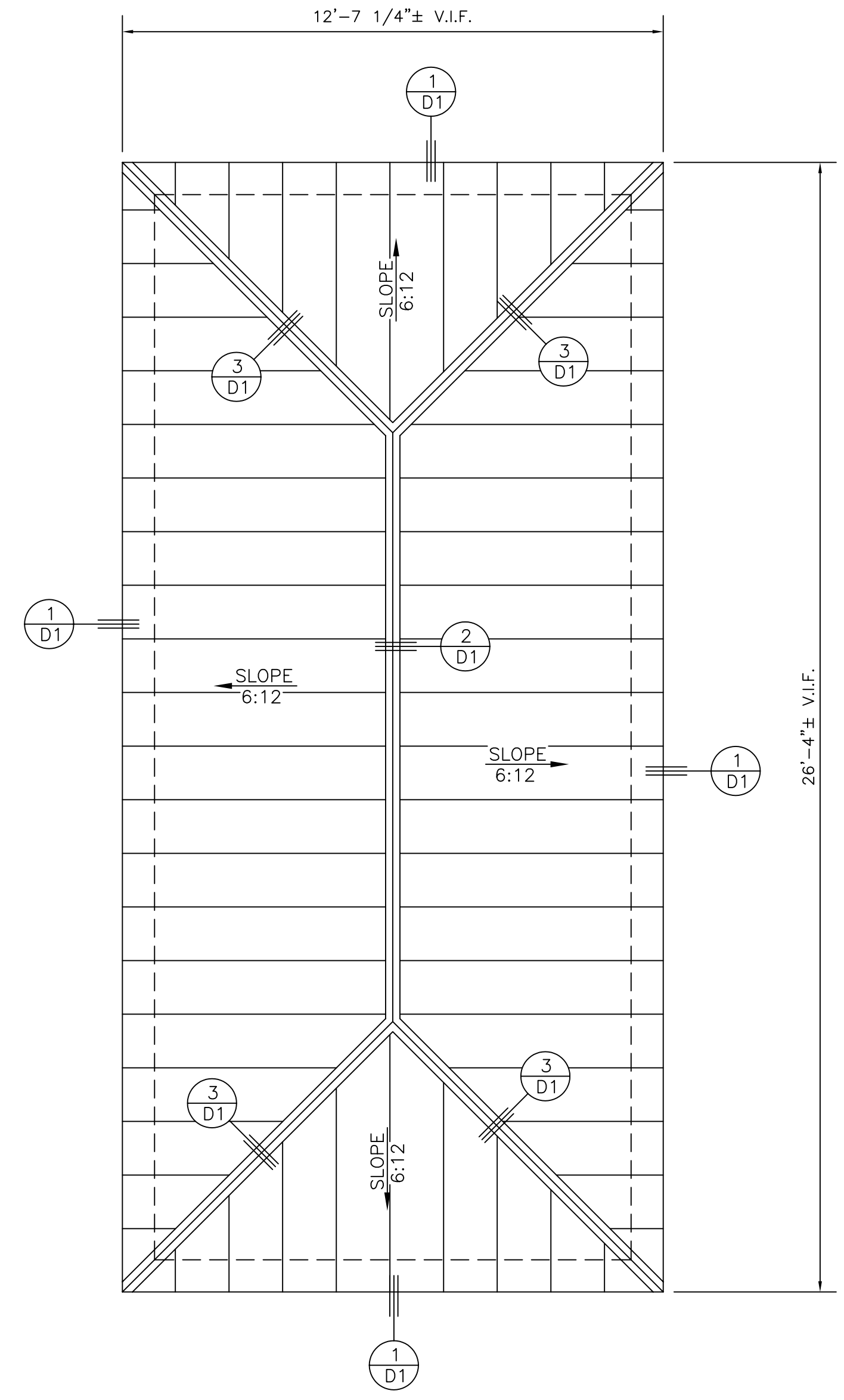
NOTE: IT IS YOUR (CUSTOMER) RESPONSIBILITY TO READ AND HEED ALL NOTES HEREON TO FACILITATE ORDER PRODUCTION, SHIPMENT, AND SUBSEQUENT INSTALLATION AT YOUR SITE.

ALL MATERIAL MUST BE INSPECTED UPON RECEIPT. ATAS IS RESPONSIBLE FOR MATERIAL DEFECTS ONLY. INSTALLATION OF OUR PRODUCTS SHALL DEEM ACCEPTANCE OF MATERIAL. NO CHARGES WILL BE ACCEPTED FOR REMOVAL AND REPLACEMENT OF MATERIAL ONCE SAID MATERIAL HAS BEEN RECEIVED AND SIGNED FOR AT THE DESIGNATED DESTINATION NOR FOLLOWING INSTALLATION OF SAME. PLEASE ASCERTAIN FIELD CONDITIONS AND DIMENSIONS PRIOR TO ACTUAL FABRICATION OF FLASHINGS/TRIM AS WELL AS PANEL LENGTHS. ATAS DOES NOT TAKE RESPONSIBILITY FOR DIMENSIONS PRIOR TO FABRICATION. NOTE: NO MATERIALS WILL BE RELEASED WITHOUT THE RECEIPT OF SIGNED AND DATED "APPROVED" SHOP DRAWINGS. MATERIAL NOT SUPPLIED BY ATAS INTERNATIONAL. NOTE: SPECIFICATION SHEETS ON PROPOSED MOISTURE BARRIER, SEALANT AND FASTENERS MUST BE SUBMITTED AND APPROVED BY ATAS INTERNATIONAL, INC. BEFORE INSTALLATION. IF APPROVAL HAS NOT BEEN ISSUED BY ATAS, THE INSTALLATION MAY BE REJECTED FOR WARRANTY.

- SPECIFIC NOTES**
1. PANEL CLIP SPACING TO BE 24" O.C. IN THE FIELD OF THE ROOF.
  2. ALL FASTENERS FOR THE TRIMS/FLASHINGS SHALL BE LOCATED AT 24" O.C. UNLESS OTHERWISE SPECIFIED HEREIN.
  3. ALL NEOPRENE CLOSURES SHALL BE FURNISHED BY ATAS AND SHALL BE INSTALLED IN THE FIELD BY THE ON-SITE CONTRACTOR BY APPLYING A CONTINUOUS BEAD OF SEALANT ON ALL CONTACTING SURFACES.
  4. ALL UTILITY CLEATS, "Z" CLOSURES, JOGGLE CLEATS AND OTHER ITEMS/PARTS SIMILARLY DESIGNED/APPLIED SHALL BE SEATED IN THE FIELD BY THE ON-SITE CONTRACTOR ON A CONTINUOUS BEAD/STRIP OF AN APPROPRIATE SEALANT.



**ROOF PLAN**  
 SCALE: 1/8" = 1'-0"



**ROOF PLAN**  
 SCALE: 1/8" = 1'-0"

REV.#	DATE	REVISION?	BY WHOM
REVISIONS			

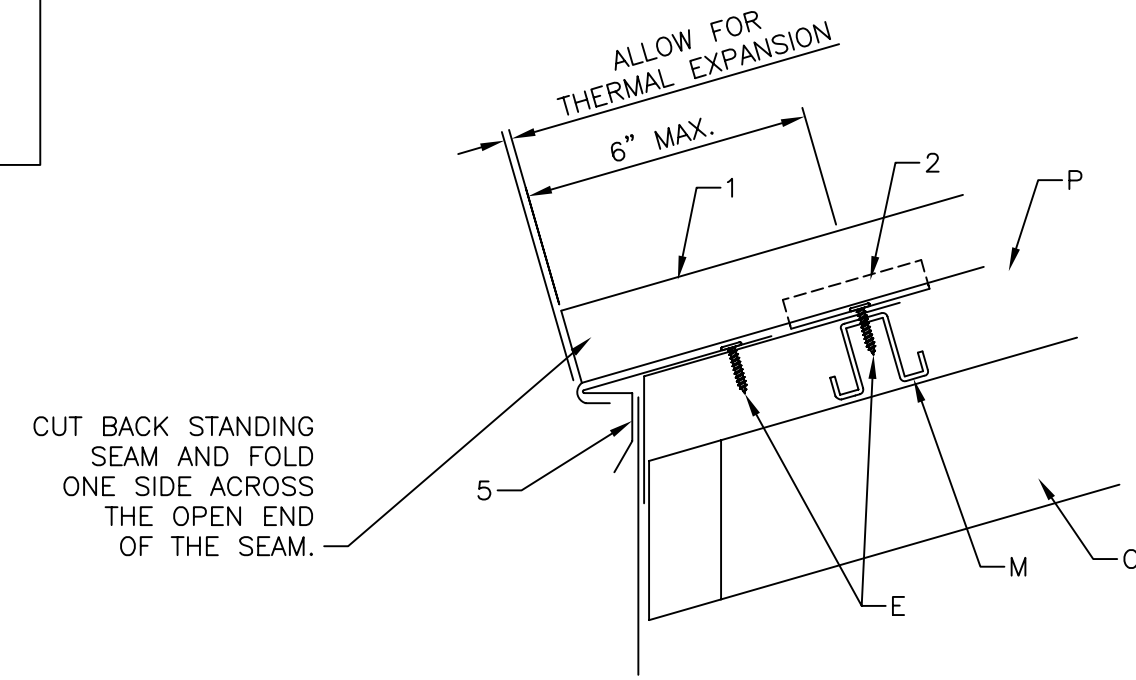
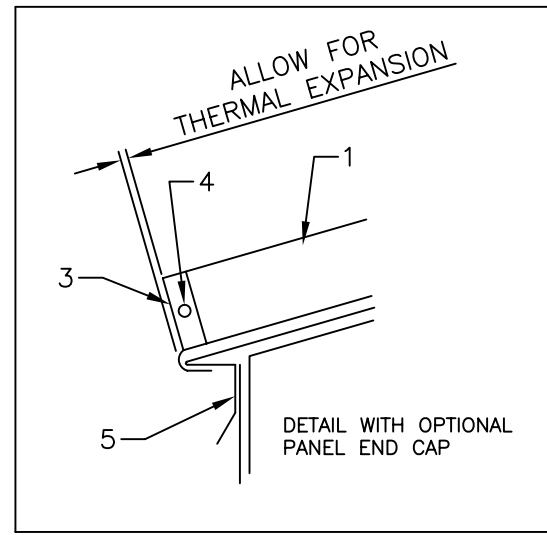
**ATAS International, Inc.**  
 Allentown, Pennsylvania  
 Mesa, Arizona

DRAWN BY: LDS APPROVED BY: DAS

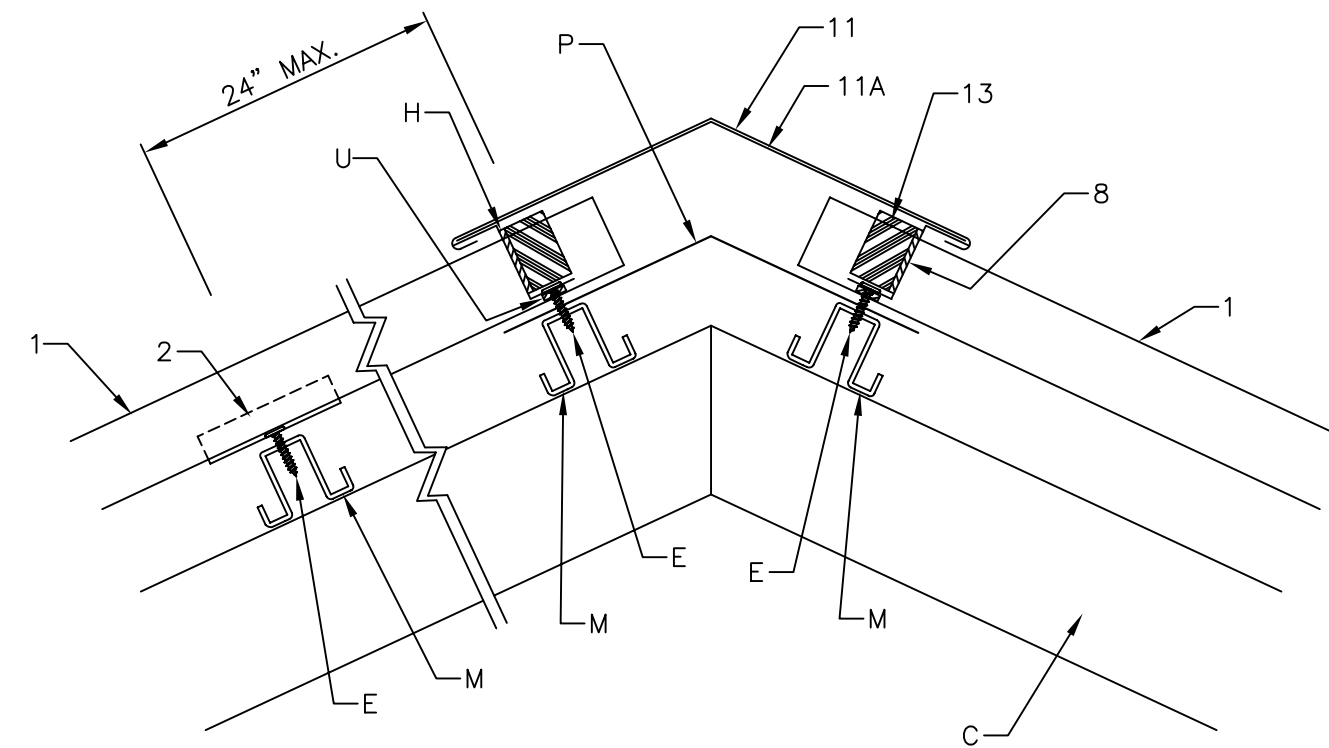
SCALE: AS SHOWN DATE: 8-9-07 PROJECT NUMBER: 200496

PROJECT: Hanover Street Parking Garage  
 Portsmouth, NH

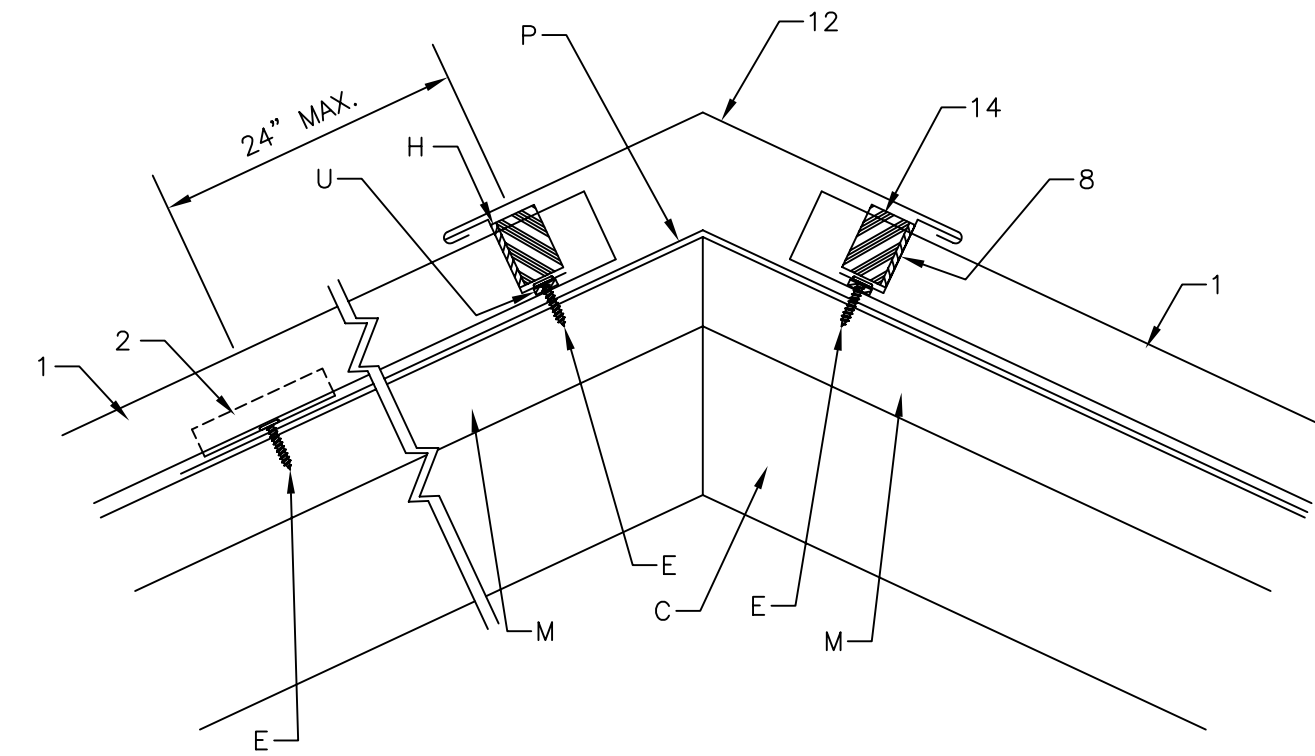
CUSTOMER: City of Portsmouth Public Works DRAWING NUMBER: 200496-A1-SHT. 1 OF 3



1 EAVE DETAIL  
D1 N.T.S.



2 RIDGE DETAIL  
D1 N.T.S.



3 HIP DETAIL  
D1 N.T.S.

PARTS MASTER

REFERENCE:

A) As supplied by ATAS:

NOTE : TRIMS MAY BE FABRICATED BY OTHERS TO ATAS SPECIFICATIONS FROM ATAS FLAT STOCK.

- #1 - ATAS Panel System - MRD150
- #2 - Panel System Anchor Clips
- #3 - Metal Seam End Plugs
- #4 - Painted Pop-Rivets - RSR3XX -
- #5 - Eave Trim -
- #5A - Eave Trim -
- #6 - Standard 7" Box Gutters (.040" aluminum)
- #7 - Gutter straps -
- #8 - Standard "Z" Closure
- #8A - Pocketed "Z" closure
- #9 - Gable/Rake Closure Trim -
- #10 - Gable/Rake Starter Cleat -
- #11 - Ridge Cap -
- #11A - Ridge Cap Splices -
- #12 - Hip Cap -
- #13 - Shaped Neoprene Closures -
- #14 - Straight Neoprene Closures -
- #15 - Vented Ridge Cap
- #15A - Vented Ridge Cap Splice
- #16 - Vented "Z" Closure -
- #17 - Shed Ridge Cap
- #17A - Shed Ridge Cap Splice
- #18 - Shed Ridge Starter Cleat
- #19 - Vented Shed Ridge Starter Cleat
- #20 - Vented Shed Ridge Cap
- #20A - Vented Shed Ridge Splice
- #21 - Curved Gable
- #22 - Counterflashing
- #23 - Sidewall Trim
- #24 - Elbow Type Transition
- #25 - Headwall Transition
- #26 - Vented Headwall Transition
- #27 - Knee Cap
- #28 - Joggle Cleat
- #29 - Valley Pan
- #30 - Inside Corner Trim
- #31 - Outside Corner Trim
- #32 - Plain Sill Trim
- #33 - Closed Bottom Sill Trim
- #34 - "H" Sill Trim
- #35 - Expansion Joint Cover Cap
- #36 - Pipe Boot (1/4" to 4" Pipe Dia.)
- #37 - Pipe Boot (4" to 8" Pipe Dia.)
- #38 - Undersheet - Square Penetrations
- #39 - Top Cover - Square Penetrations
- #40 - Utility Cleat
- #41 - Channel
- #42 - Curved Gable Angle
- #43 - Rapid-Lock Coping
- #44 - Bearing Plate
- #45 - Specify
- #46 - Specify

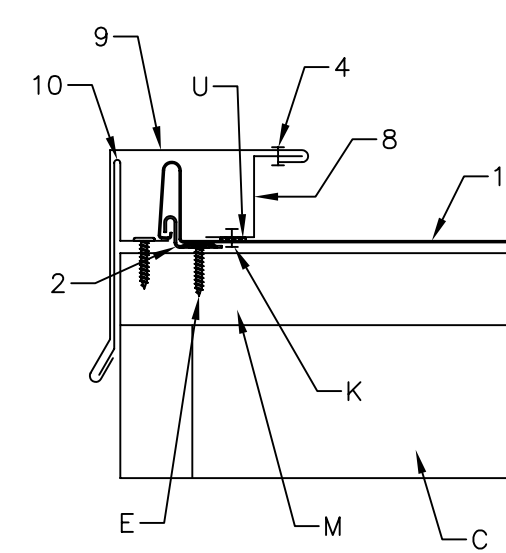
REFERENCE:

B) As supplied by others - not ATAS:

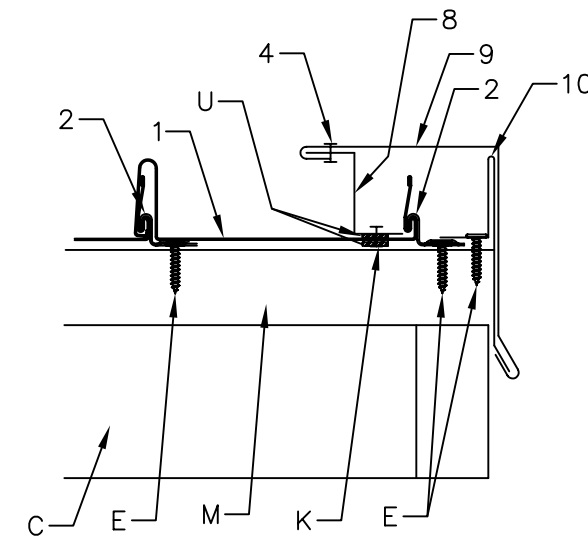
- "A" - 30# (Minimum) Felt with Rosin Paper.
- "A1" - 40 MIL ICE & WATER SHIELD
- "B" - Top of roof deck or insulation
- "C" - Structural
- "D" - Trim boards
- "E" - #12 X 1" Wafer Headed Screws
- "F" - Metal Fascia flashing (May be fabricated/supplied by ATAS).
- "G" - Appropriate anchor screws sufficiently long enough to fully penetrate the solid substrate (Some types/styles available from ATAS.)
- "H" - Appropriate type sealant.
- "I" - Not used for clarity
- "J" - Painted Pop-Rivets
- "K" - Plain Pop-Rivets - Not to penetrate the substrate.
- "L" - Plywood
- "M" - Hat Channel
- "N" - Subgirt Channel
- "O" - Not used for clarity.
- "P" - Support Plate - 18 ga.
- "Q" - Exterior walls
- "R" - Reglet
- "S" - Exterior wall finish system.
- "T" - Soffit system - Could be ATAS' soffit system
- "U" - Butyl Tape Sealant

MATERIALS USED THAT ARE SUPPLIED BY OTHERS MUST BE SUBMITTED AND APPROVED BY ATAS PRIOR TO INSTALLATION.

GENERAL NOTE:  
Unless specified otherwise, all fasteners for trim component attachment are to be at 2'-0" o.c. maximum.



4 GABLE DETAIL  
D1 N.T.S.



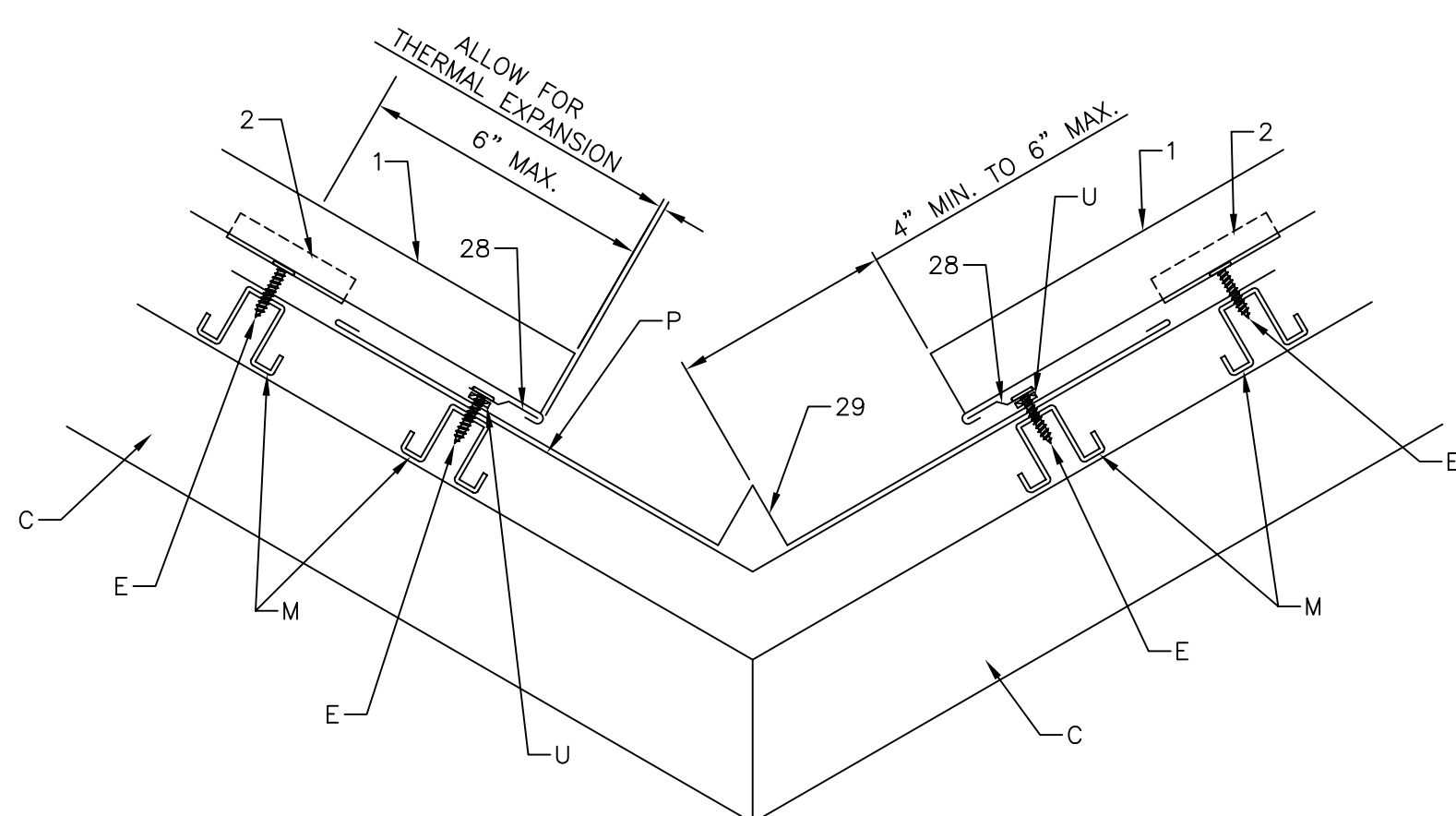
WORK FORM

Name _____ Date XX/XX/01 Page x of x _____ OF0294		Ship-To _____	
Address _____		Address _____	
Customer Signature _____		Customer Signature _____	
Customer # _____		Customer # _____	
Job Reference: _____		Job Reference: _____	
Customer PO NO.: _____		Customer PO NO.: _____	
Contact Person: _____		Contact Person: _____	
Phone: _____		Phone: _____	
Product Name: EAVE TRIM PART # 5		Product Name: STANDARD "Z" CLOSURE PART # 8	
Material ALUMINUM Gauge .032		Material ALUMINUM Gauge .032	
# of Pieces ??? Str. Width 7 1/4"		# of Pieces ??? Str. Width 3 11/16"	
Length 12'-0" Embossed SPECIFY		Length 12'-0" Embossed SPECIFY	
Color SPECIFY Finish KYNAR		Color SPECIFY Finish KYNAR	
Product Name: GABLE/RAKE CLOSURE TRIM PART # 9		Product Name: GABLE/RAKE STARTER CLEAT PART # 10	
Material ALUMINUM Gauge .032		Material ALUMINUM Gauge .032	
# of Pieces ??? Str. Width 9 3/4"		# of Pieces ??? Str. Width 7 1/8"	
Length 12'-0" Embossed SPECIFY		Length 12'-0" Embossed SPECIFY	
Color SPECIFY Finish KYNAR		Color SPECIFY Finish KYNAR	

WORK FORM

Name _____ Date XX/XX/01 Page x of x _____ OF0294		Ship-To _____	
Address _____		Address _____	
Customer Signature _____		Customer Signature _____	
Customer # _____		Customer # _____	
Job Reference: _____		Job Reference: _____	
Customer PO NO.: _____		Customer PO NO.: _____	
Contact Person: _____		Contact Person: _____	
Phone: _____		Phone: _____	
Product Name: RIDGE CAP PART # 11		Product Name: HIP CAP PART # 12	
Material ALUMINUM Gauge .032		Material ALUMINUM Gauge .032	
# of Pieces ??? Str. Width 15"		# of Pieces ??? Str. Width 15"	
Length 12'-0" Embossed SPECIFY		Length 12'-0" Embossed SPECIFY	
Color SPECIFY Finish KYNAR		Color SPECIFY Finish KYNAR	
Product Name: JOGGLE CLEAT PART # 28		Product Name: VALLEY PAN PART # 29	
Material ALUMINUM Gauge .032		Material ALUMINUM Gauge .032	
# of Pieces ??? Str. Width 1 3/4"		# of Pieces ??? Str. Width 24"	
Length 12'-0" Embossed SPECIFY		Length 12'-0" Embossed SPECIFY	
Color SPECIFY Finish KYNAR		Color SPECIFY Finish KYNAR	

\* - Indicates color side.



5 VALLEY DETAIL  
D1 N.T.S.

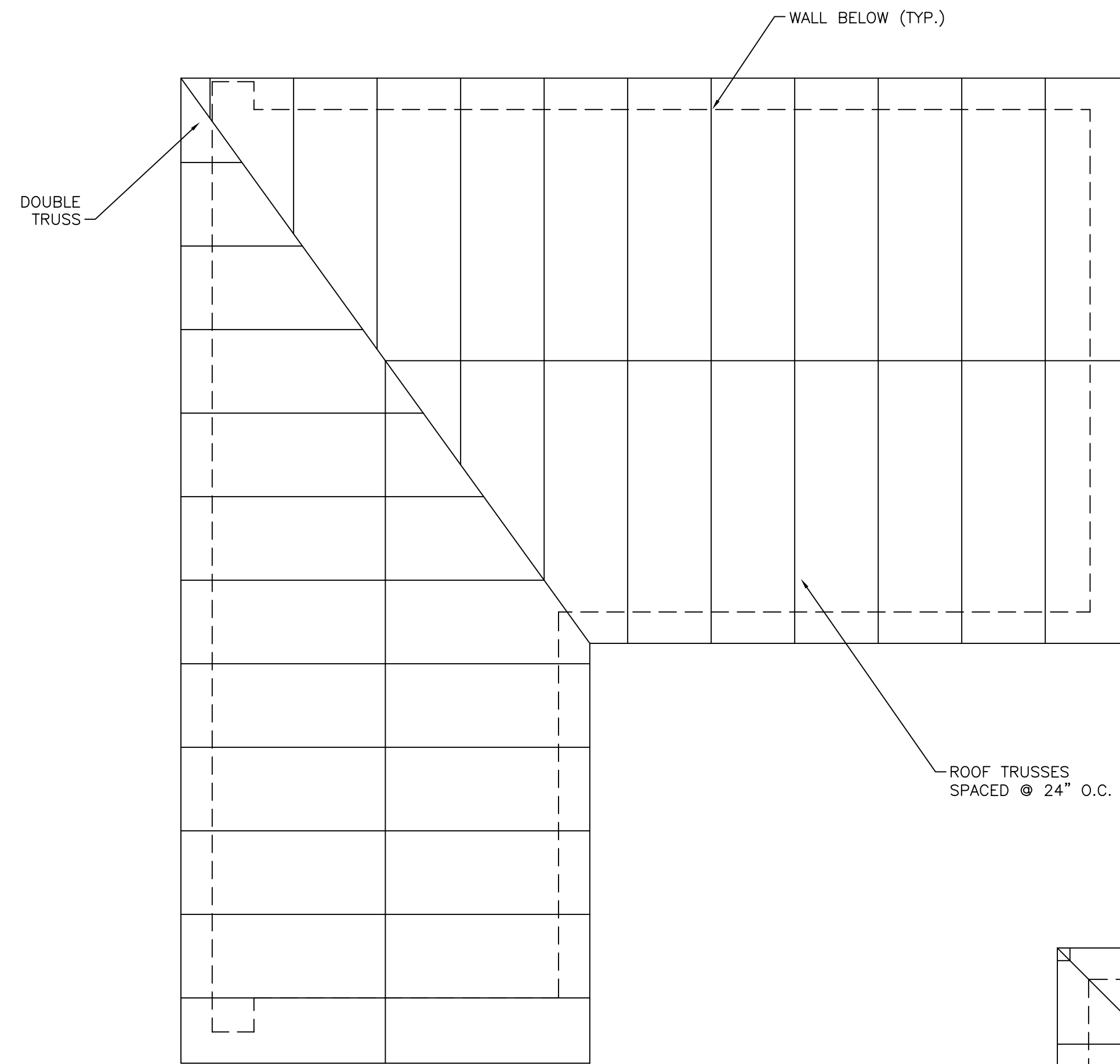
REV.#	DATE	REVISION?	BY WHOM

**ATAS International, Inc.**  
Allentown, Pennsylvania  
Mesa, Arizona

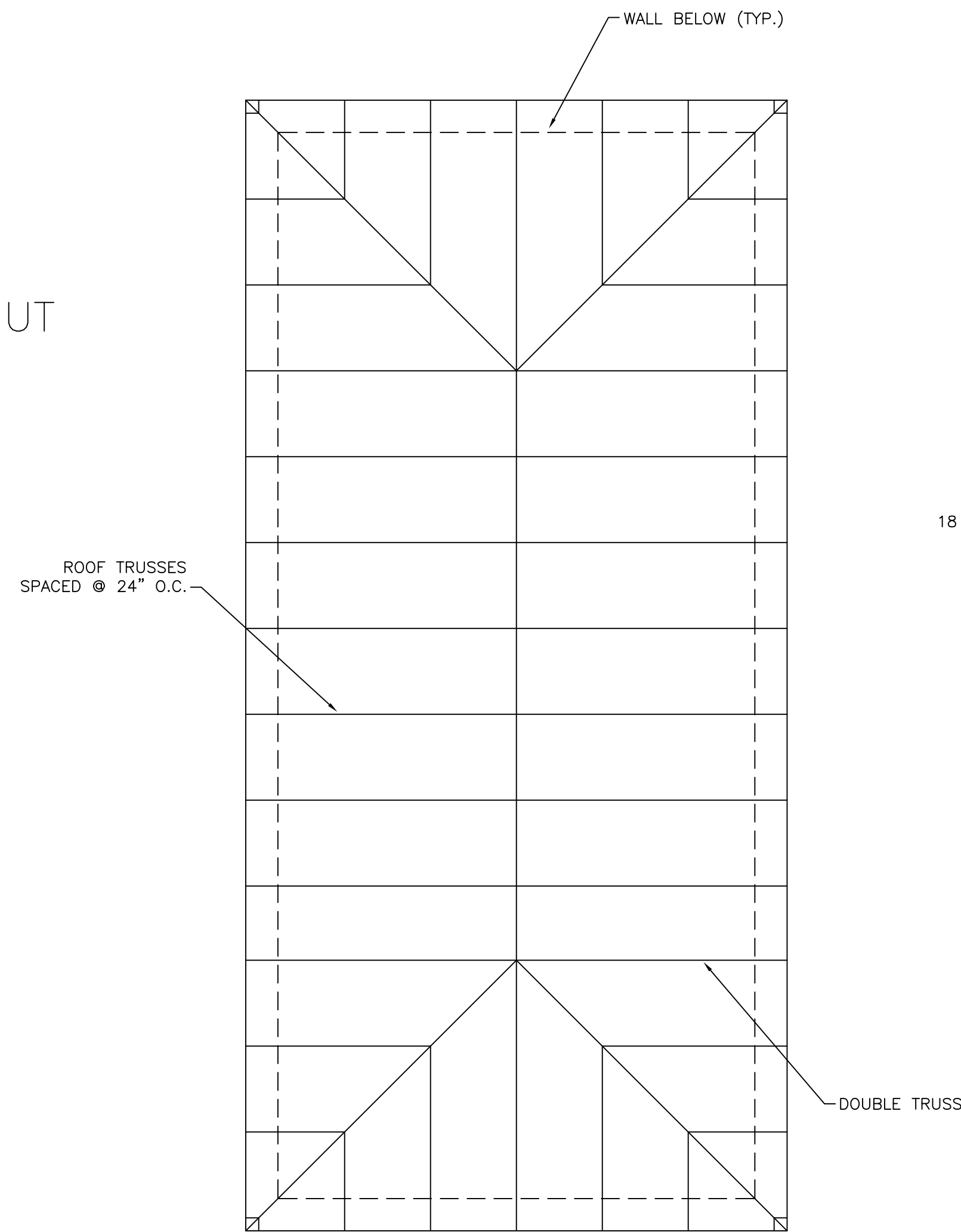
DRAWN BY: LDS APPROVED BY: DAS  
SCALE: AS SHOWN DATE: 8-9-07 PROJECT NUMBER: 200496

PROJECT: Hanover Street Parking Garage  
Portsmouth, NH

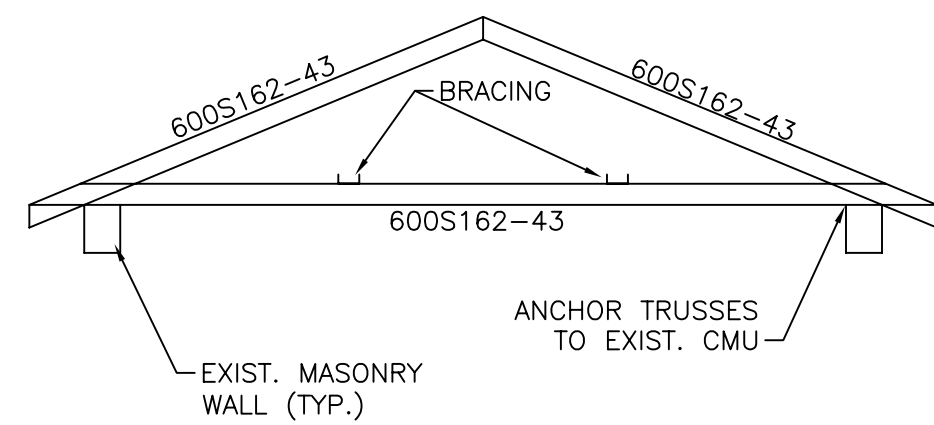
CUSTOMER: City of Portsmouth Public Works DRAWING NUMBER: 200496-D1-SHT. 3 OF 3



FRAMING PLAN - TRUSS LAYOUT  
SCALE: 1/8" = 1'-0"

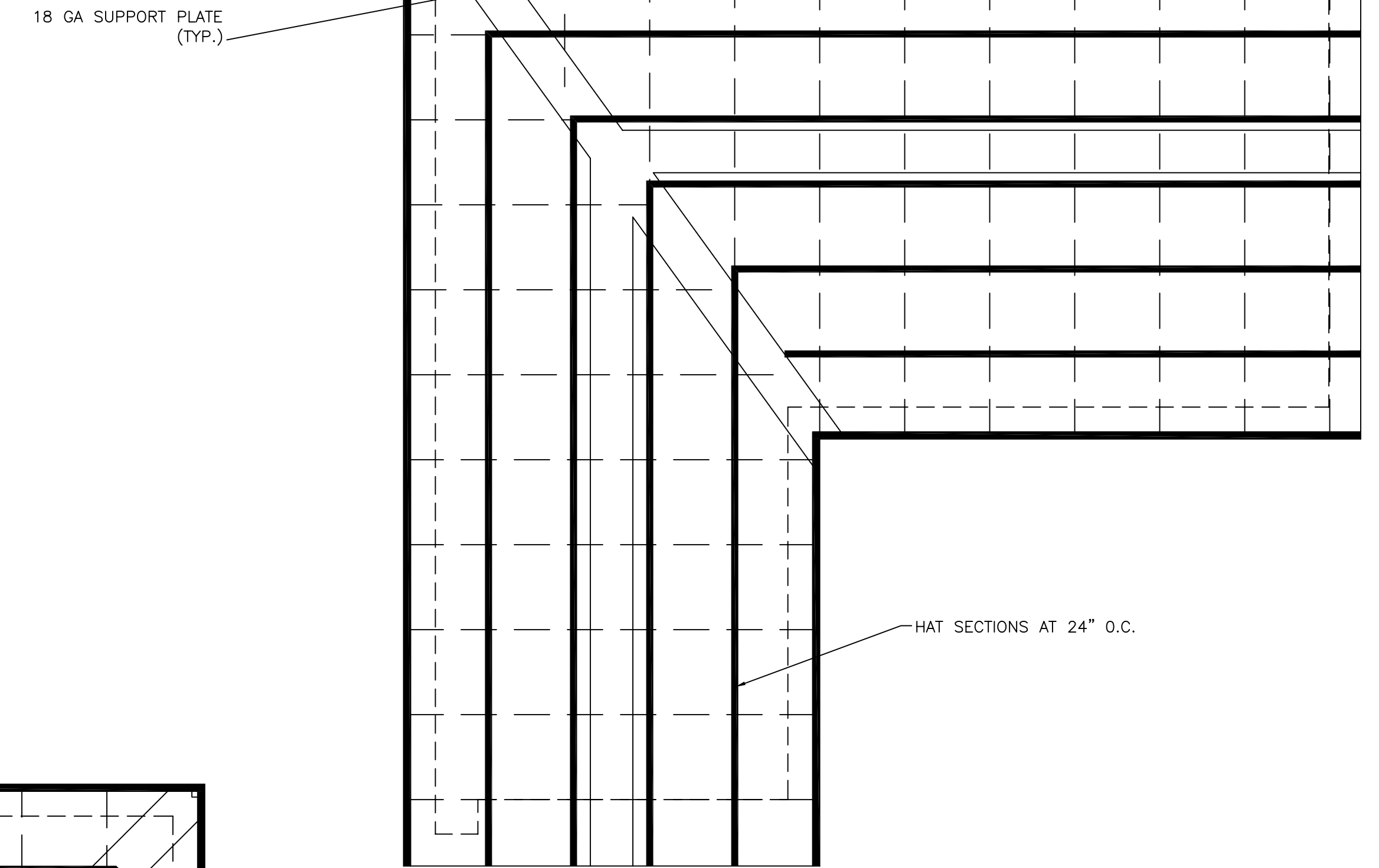


FRAMING PLAN - TRUSS LAYOUT  
SCALE: 1/8" = 1'-0"

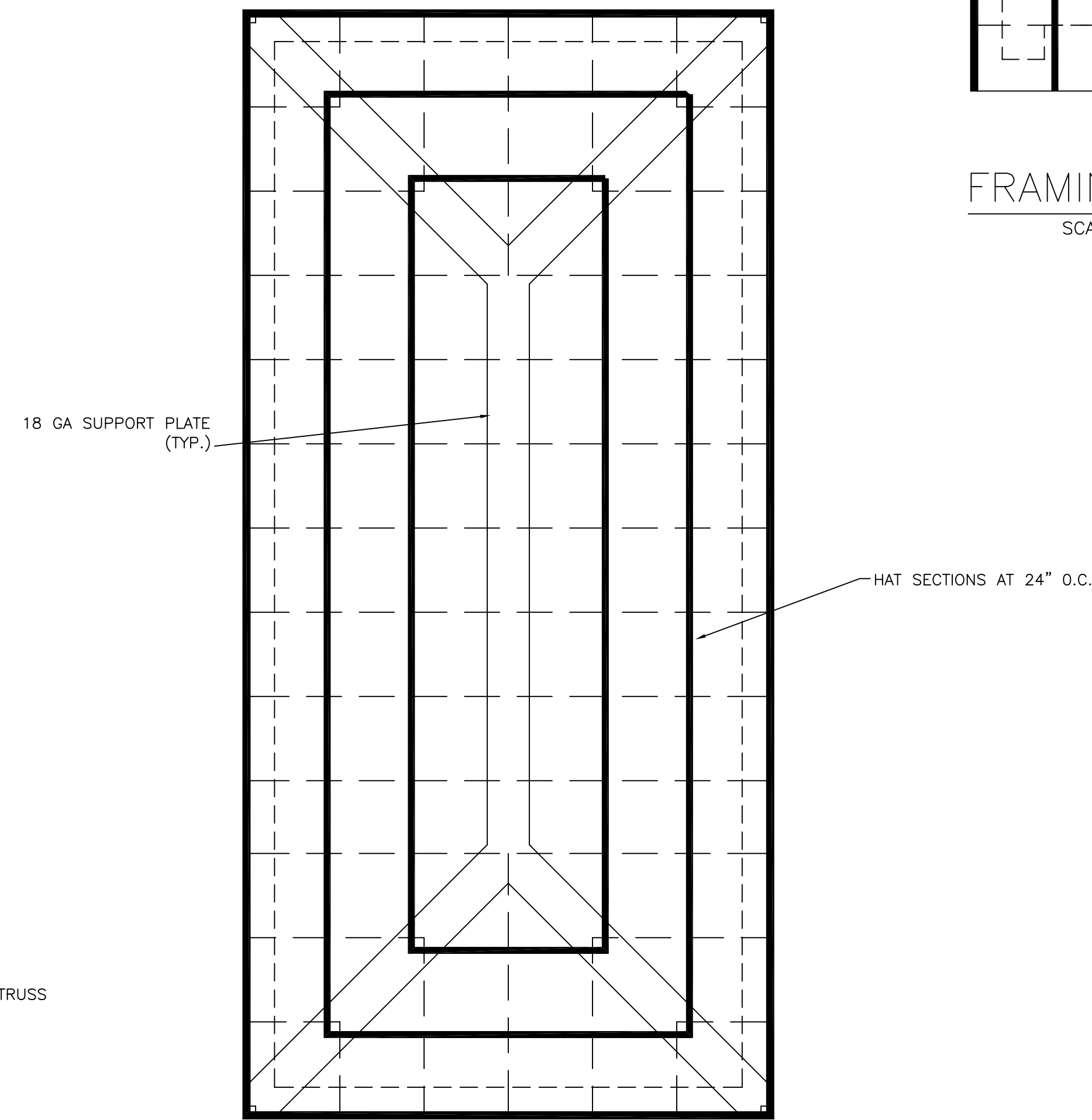


TYPICAL TRUSS SECTION  
SCALE: N.T.S.

NOTE:  
CONTRACTOR TO VERIFY ALL DIMENSIONS.



FRAMING PLAN - HAT SECTIONS  
SCALE: 1/8" = 1'-0"



FRAMING PLAN - HAT SECTIONS  
SCALE: 1/8" = 1'-0"

REV.#	DATE	REVISION?	BY WHOM
REVISIONS			

		<b>ATAS International, Inc.</b> Allentown, Pennsylvania Mesa, Arizona	
		DRAWN BY: LDS DATE: 8-9-07	APPROVED BY: DAS PROJECT NUMBER: 200496
PROJECT: Hanover Street Parking Garage Portsmouth, NH			
CUSTOMER: City of Portsmouth Public Works Portsmouth, NH		DRAWING NUMBER: 200496-A2-SHT. 2 OF 3	