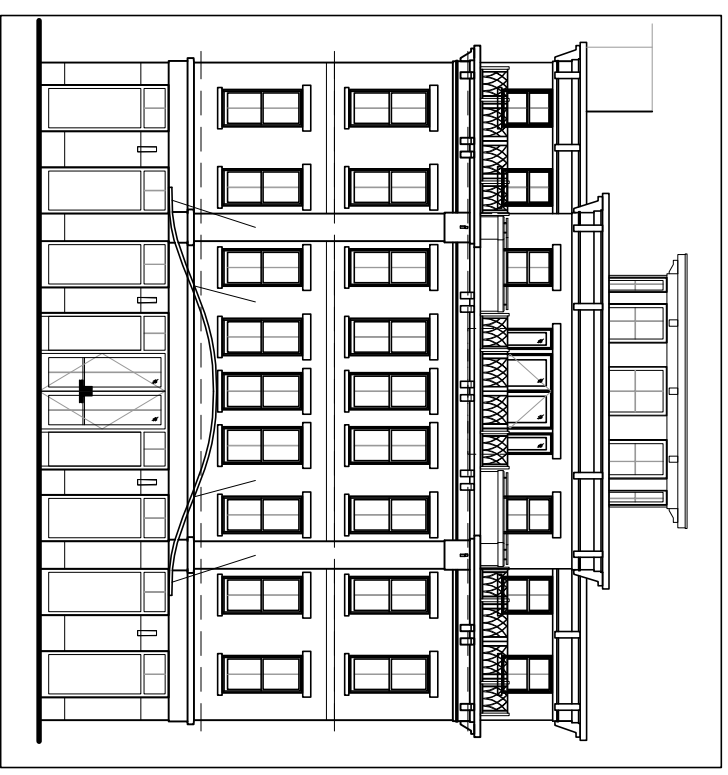


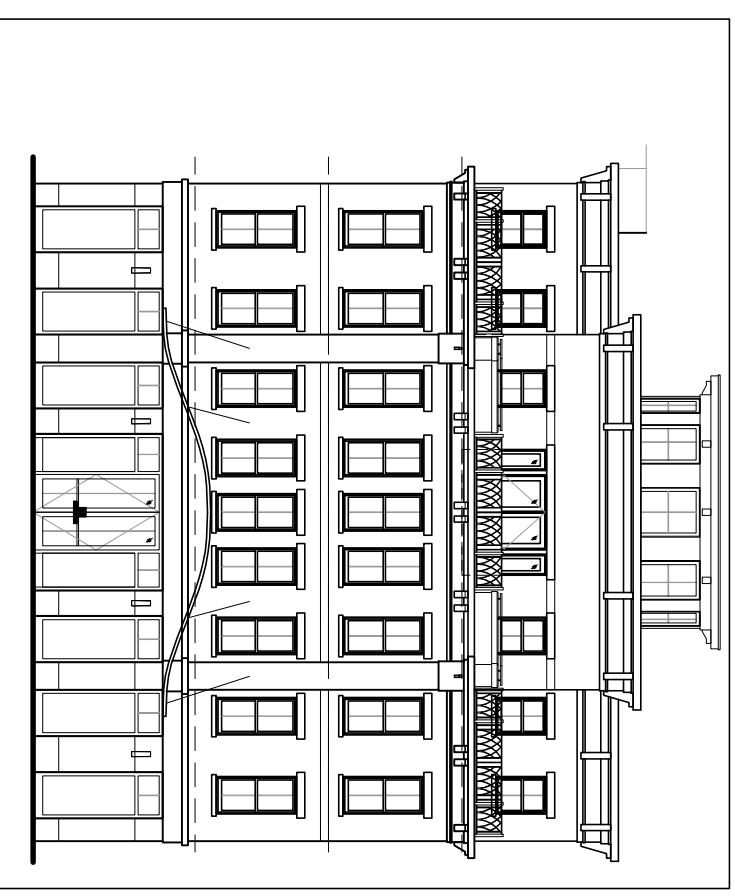
Previously Approved Maplewood Avenue Elevation
SCALE: N.T.S.



Previously Approved Rounded Corner
SCALE: N.T.S.

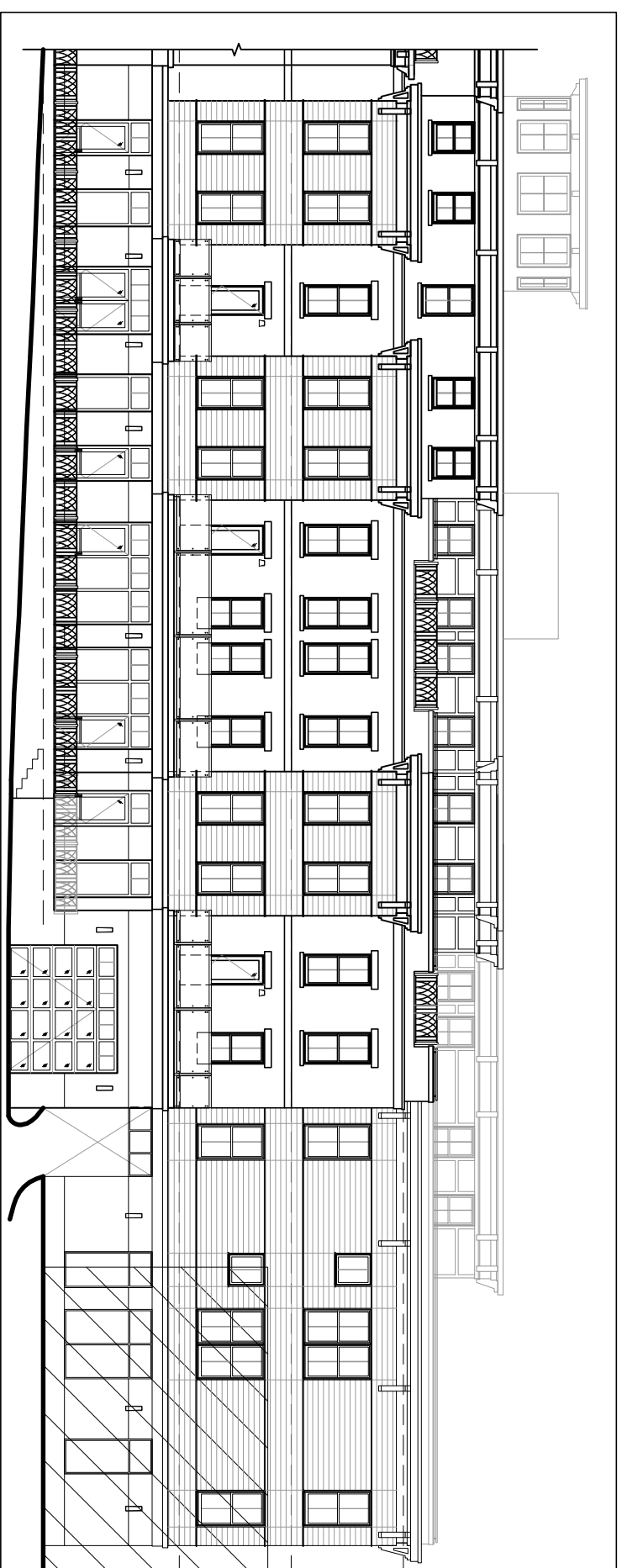


Proposed Maplewood Avenue Elevation
SCALE: N.T.S.

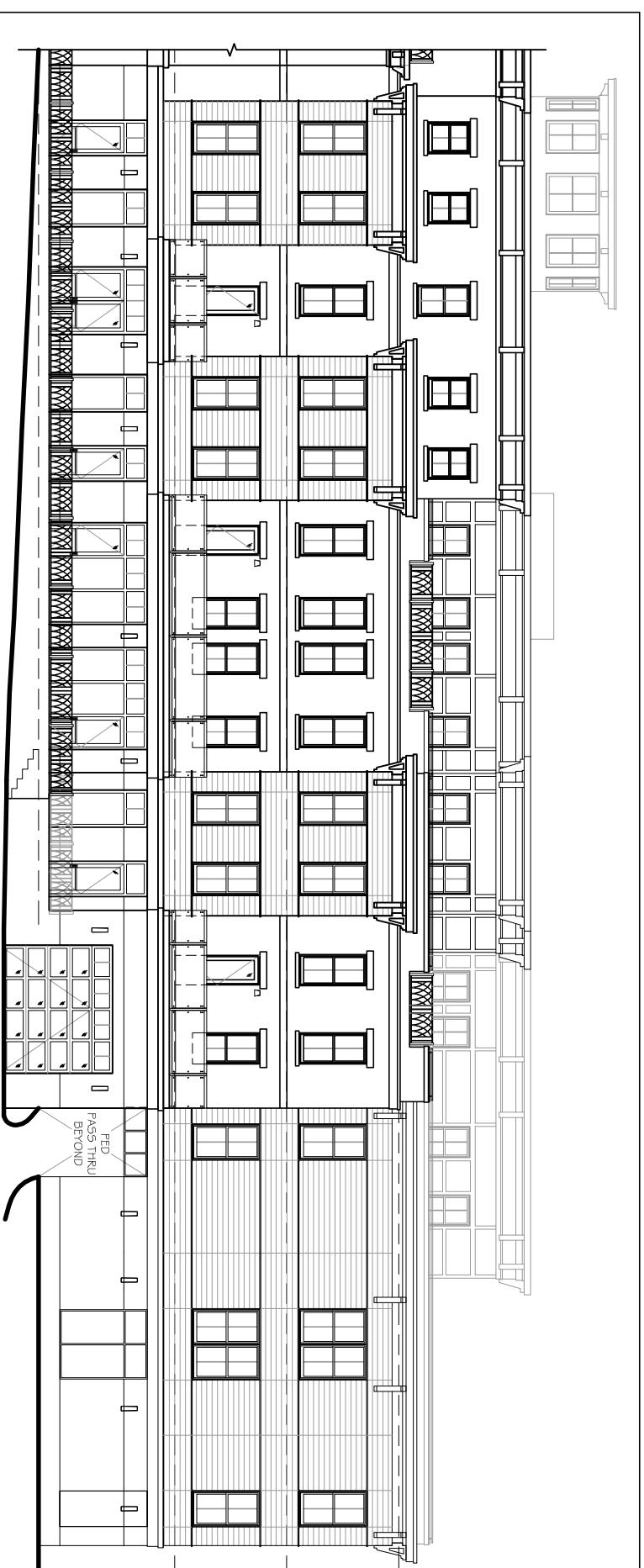


Proposed Rounded Corner
SCALE: N.T.S.

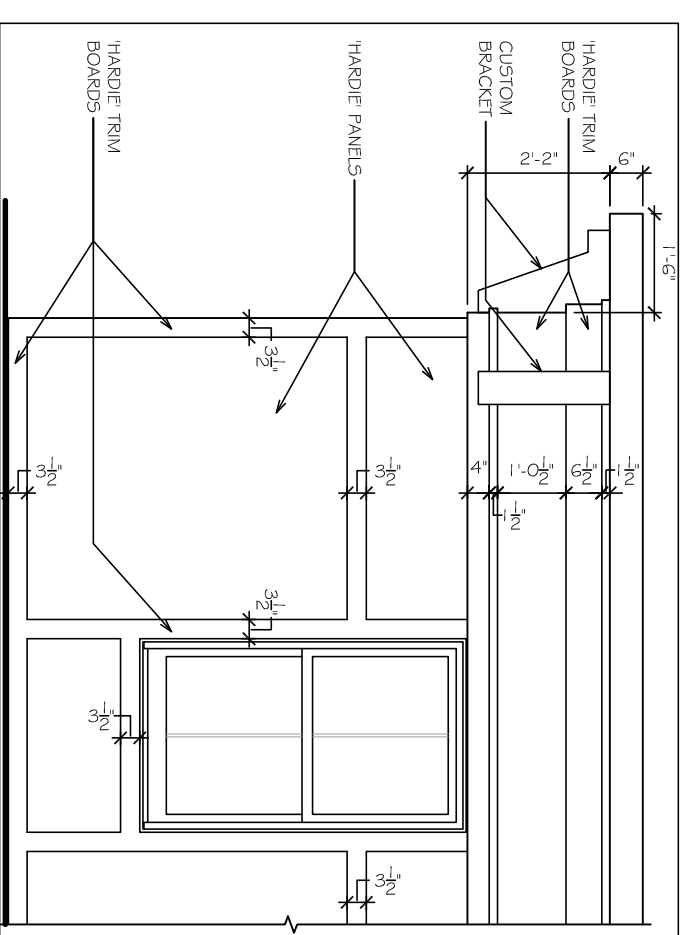




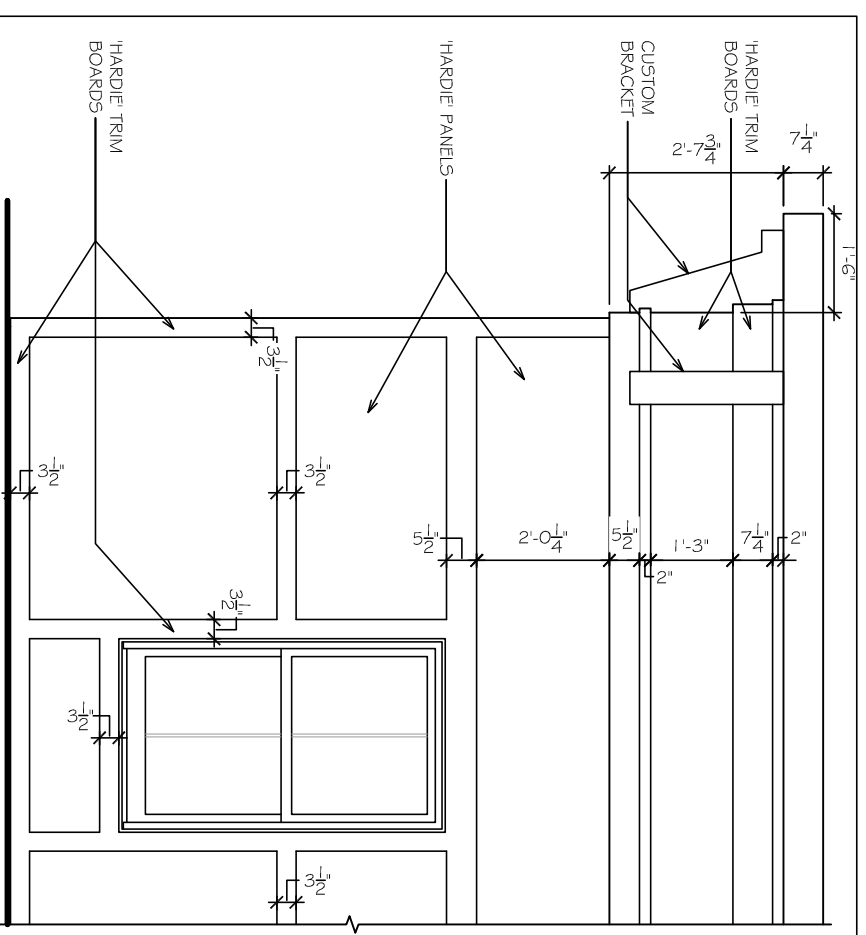
Previously Approved Deer Street Elevation
SCALE: N.T.S.



Proposed Deer Street Elevation
SCALE: N.T.S.



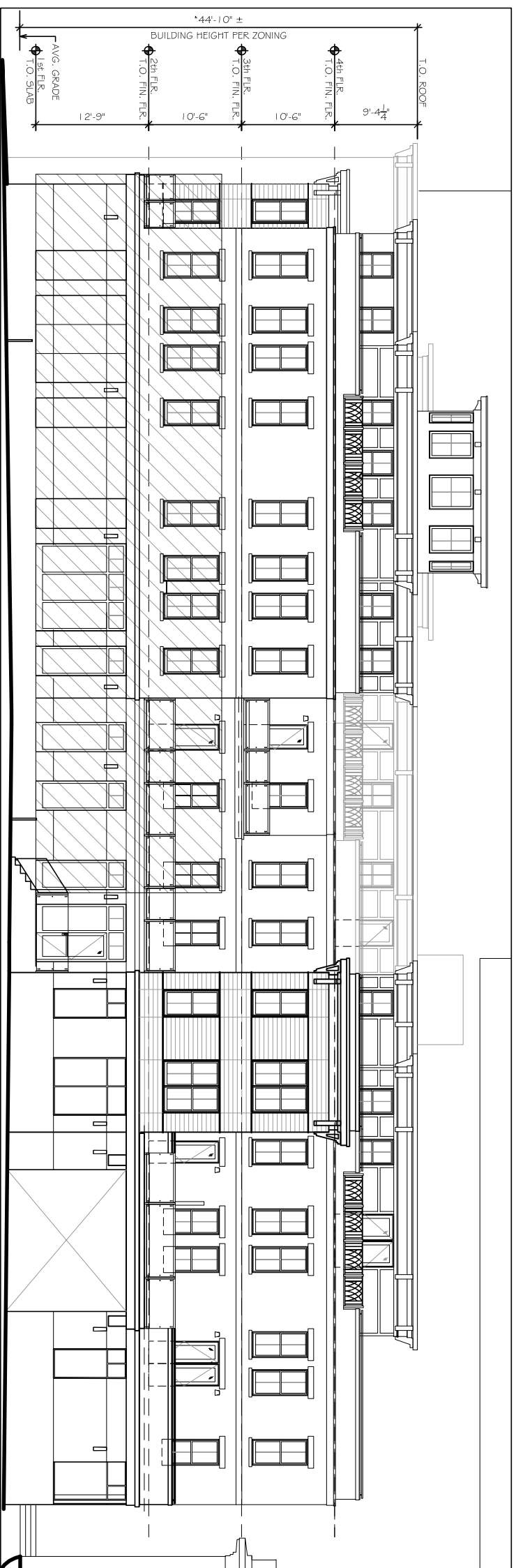
Previously Approved Cornice Detail
SCALE: N.T.S.



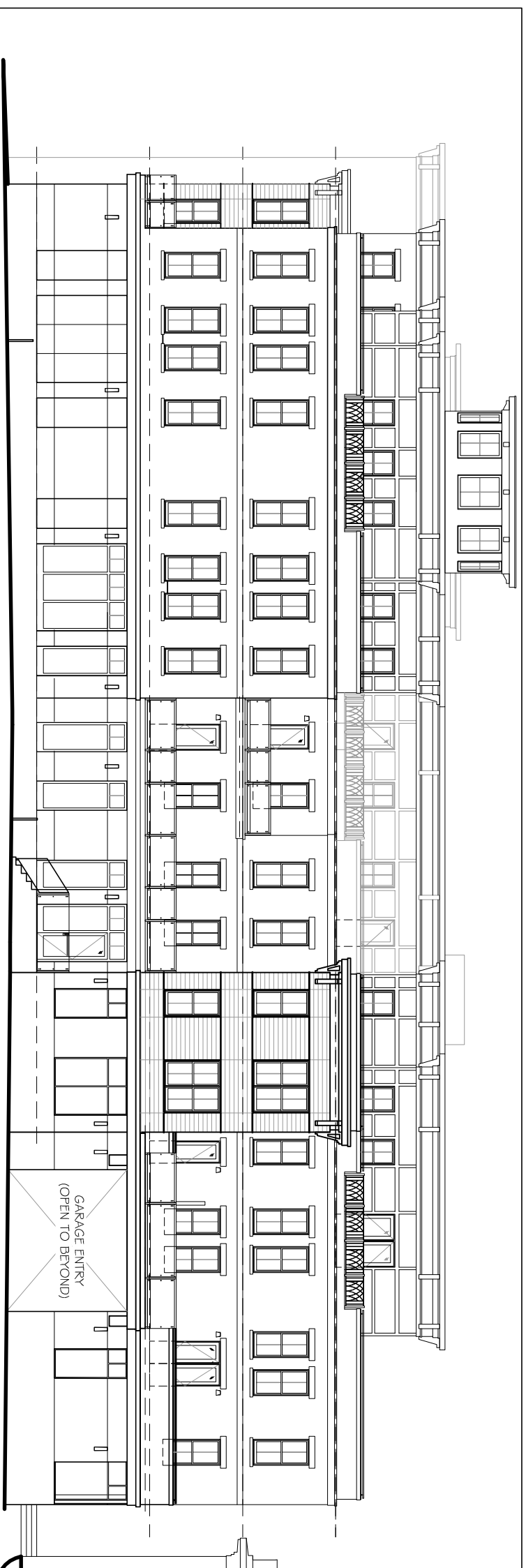
Proposed Cornice Detail
SCALE: N.T.S.

46 Maplewood Avenue, Portsmouth, New Hampshire
SOMMA Studios 603/766.3760 Amoskeag Architectural 603/606.7878





Previously Approved Bridge Street Elevation
SCALE: N.T.S.



Proposed Bridge Street Elevation
SCALE: N.T.S.

46 Maplewood Avenue, Portsmouth, New Hampshire

SOMMA Studios 603/766.3760 Amoskeag Architectural 603/606.7878

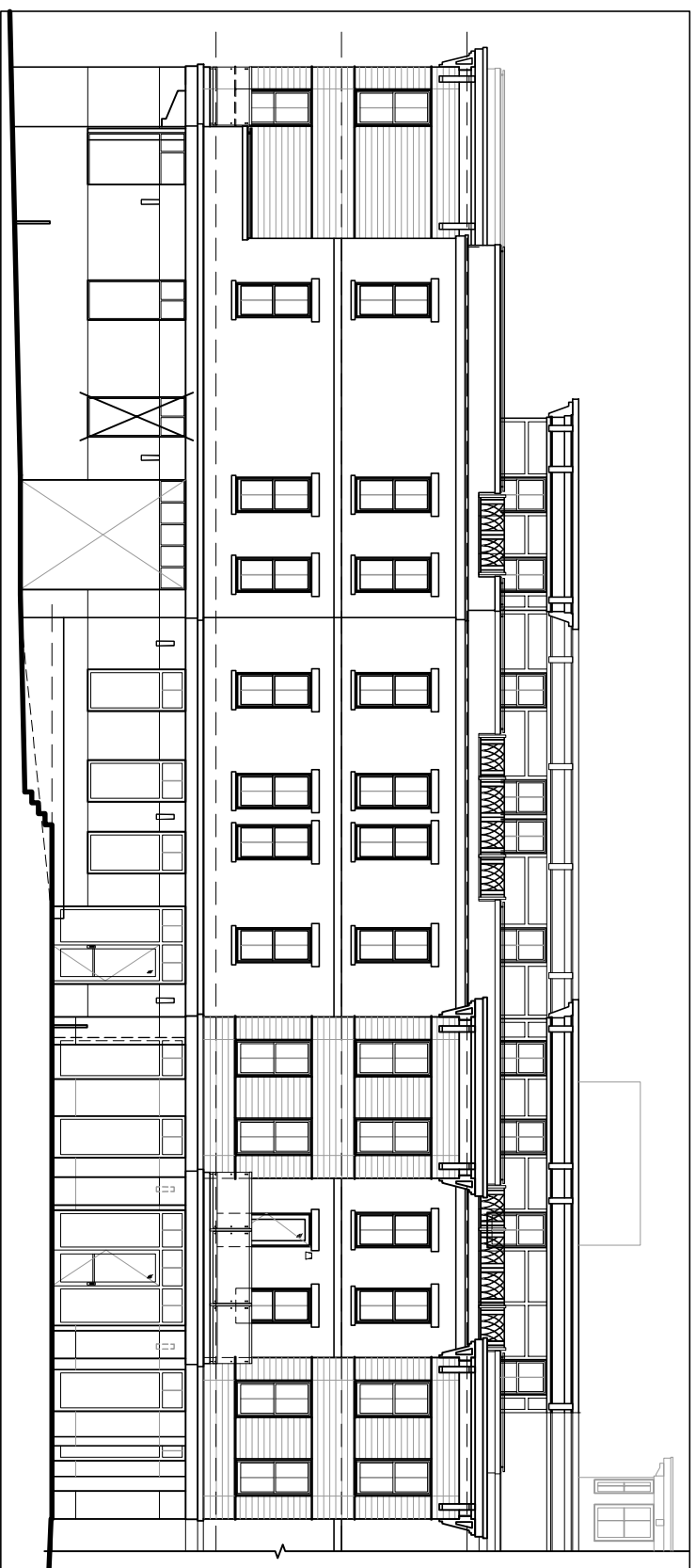
SCALE: AS NOTED

AA

7.11.18

SH. 3





Previously Approved Pedestrian Way Elevation
SCALE: N.T.S.



Proposed Pedestrian Way Elevation
SCALE: N.T.S.

46 Maplewood Avenue, Portsmouth, New Hampshire

SOMMA Studios 603/766.3760

Amoskeag Architectural 603/606.7878

SCALE: AS NOTED

AA

7.11.18

SH. 4

