

PENHALLOW HOUSE

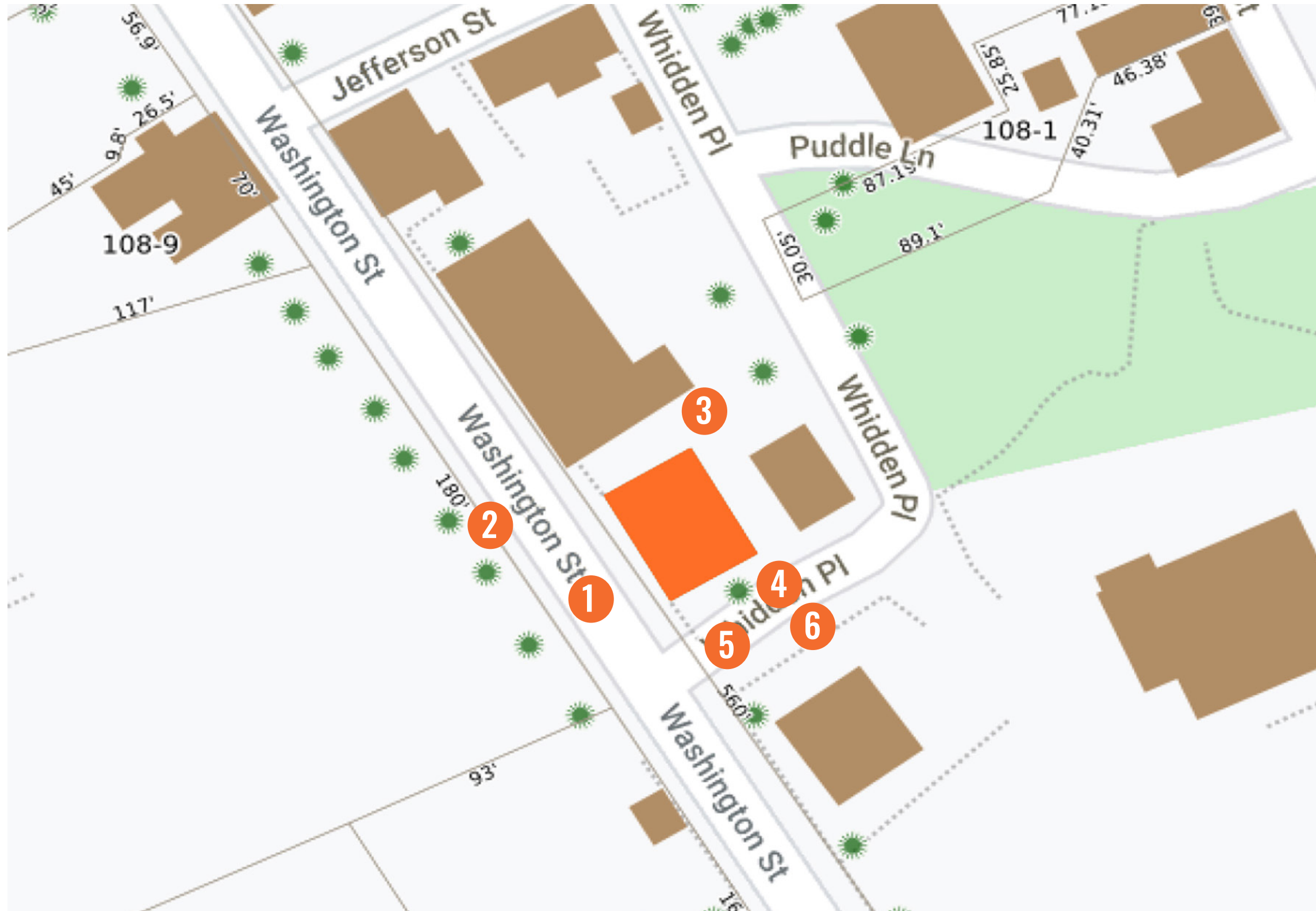
CITY OF PORTSMOUTH
Historic District Commission



PENHALLOW HOUSE, STRAWBERRY BANKE MUSEUM
PORTSMOUTH, NH

EXISTING SITE PLAN

NOT TO SCALE





1 SOUTH WEST FRONT DOORS



2 WEST CORNER



3 NORTH CORNER



4 EAST CORNER



5 SOUTH EAST FACADE



6 BARN AT EAST SIDE (BACK)

HISTORIC PHOTOS

CIRCA. 1933-1939



1 WEST CORNER



2 WEST CORNER (WITH CONTEXT)



3 EAST CORNER



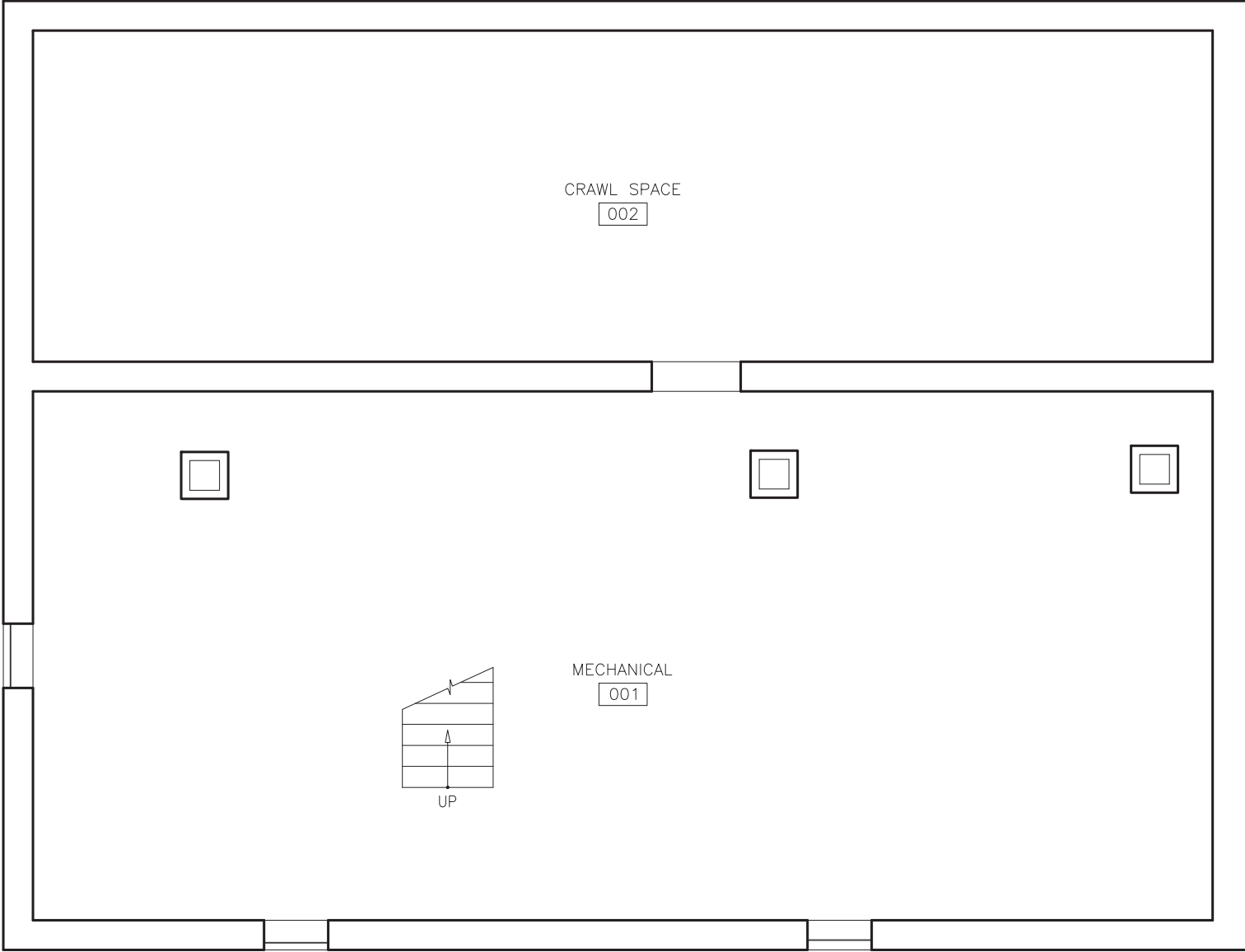
4 SOUTH EAST FACADE



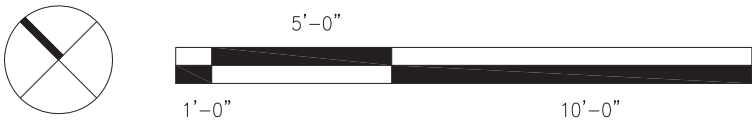
5 SOUTH-EAST PEAK DETAIL

PROPOSED PLANS

SCALE: 3/16"=1'-0"

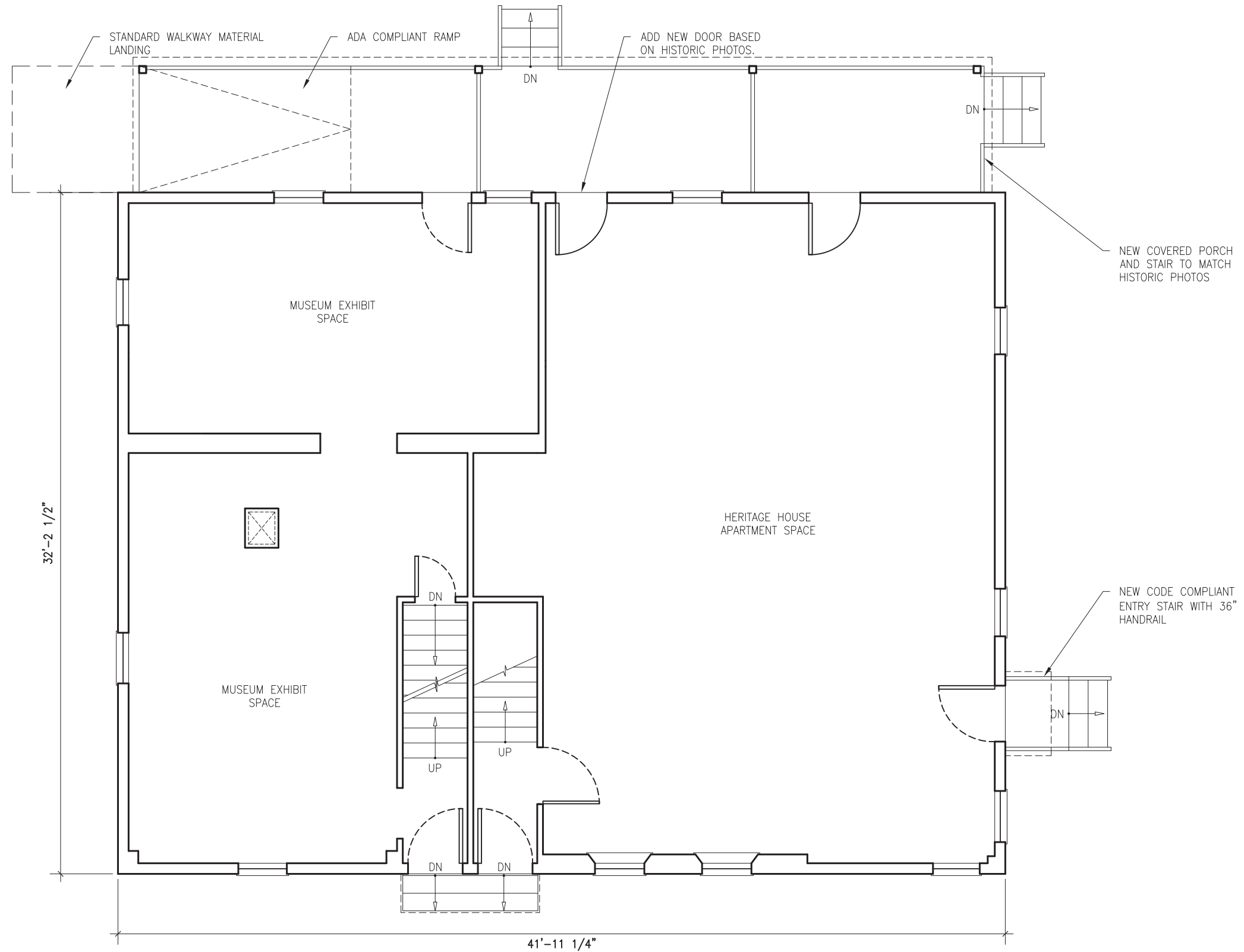


BASEMENT PLAN

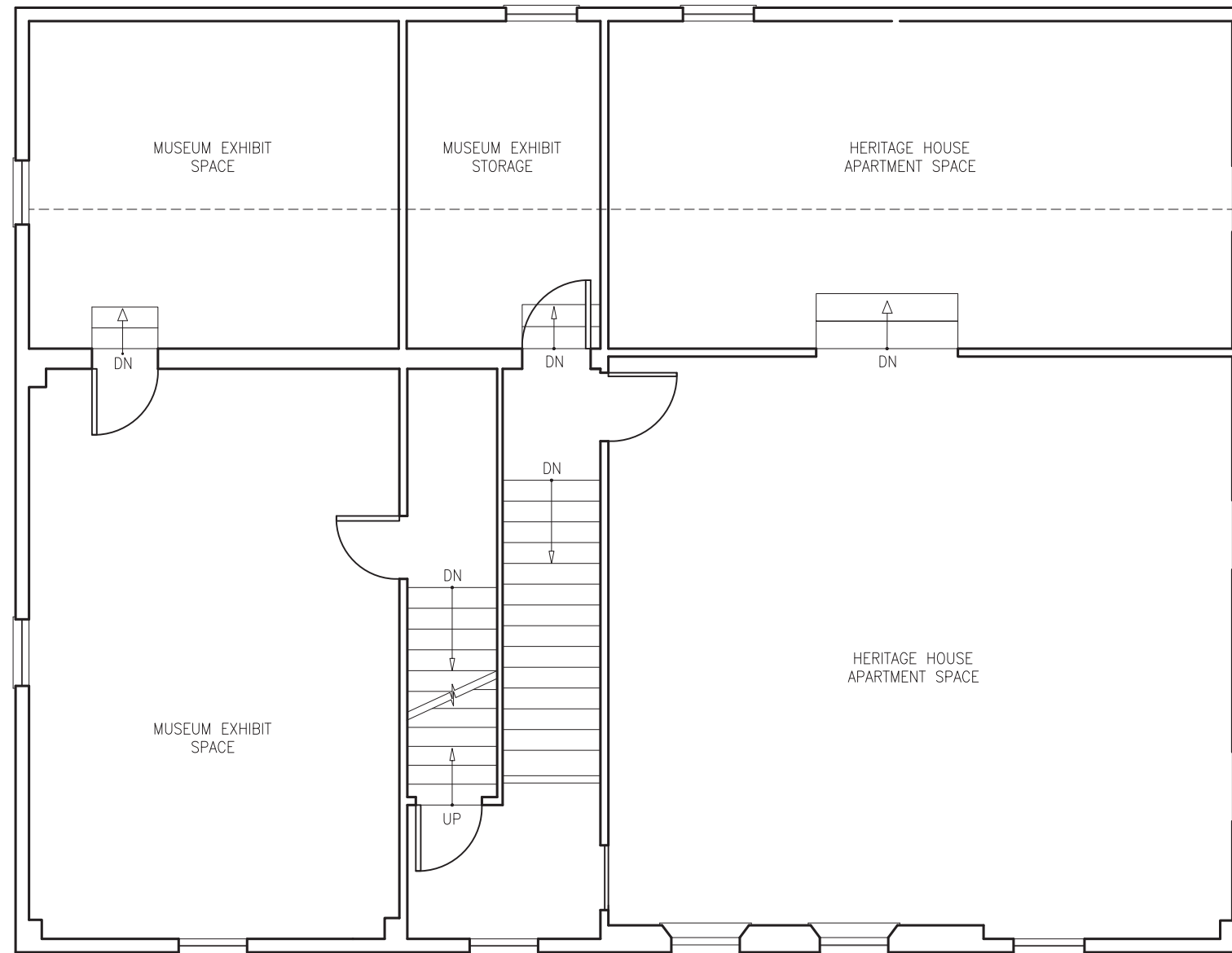


PROPOSED PLANS

SCALE: 3/16"=1'-0"



FIRST FLOOR PLAN

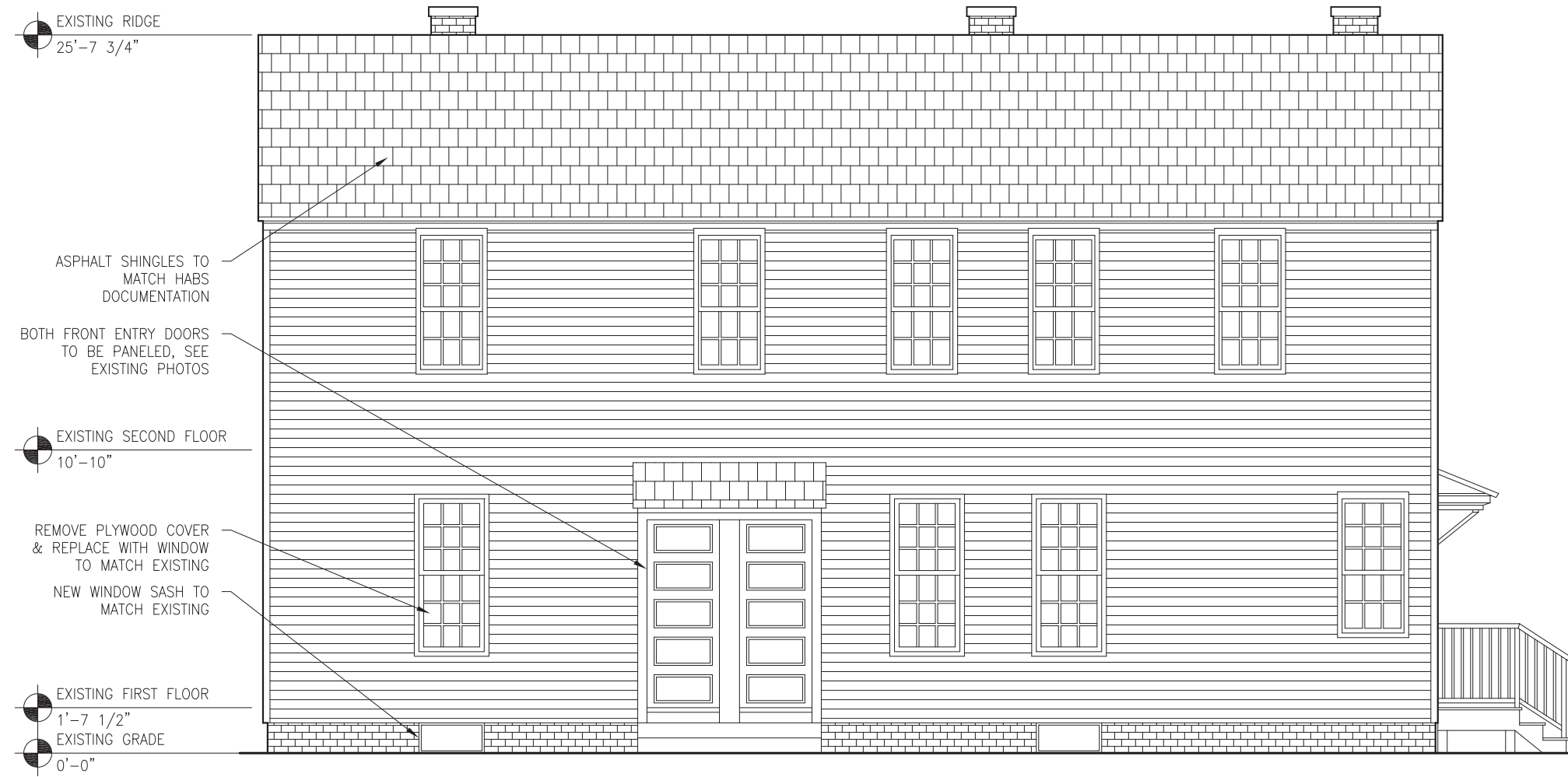


SECOND FLOOR PLAN



PROPOSED ELEVATIONS

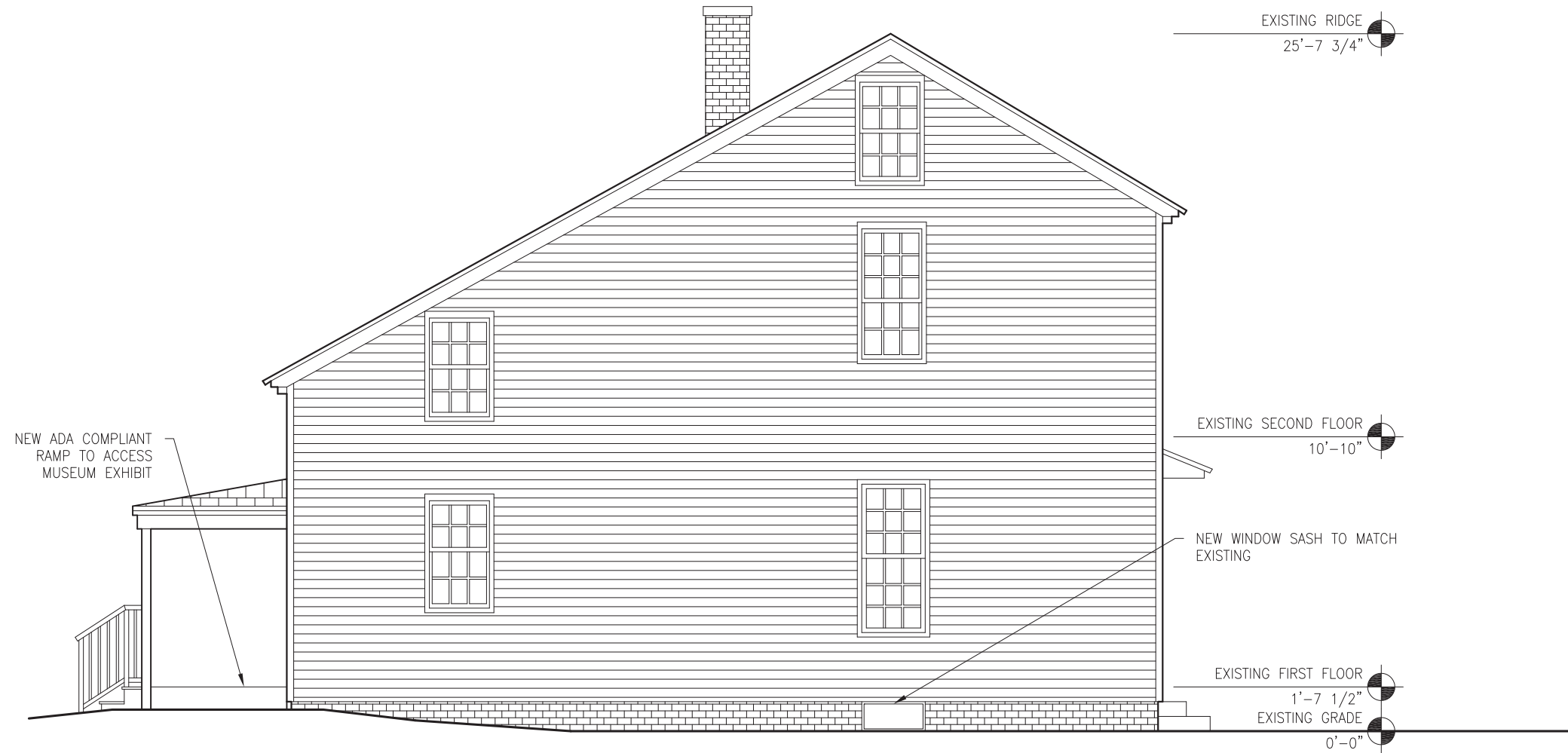
SCALE: 3/16"=1'-0"



SOUTH WEST ELEVATION

PROPOSED ELEVATIONS

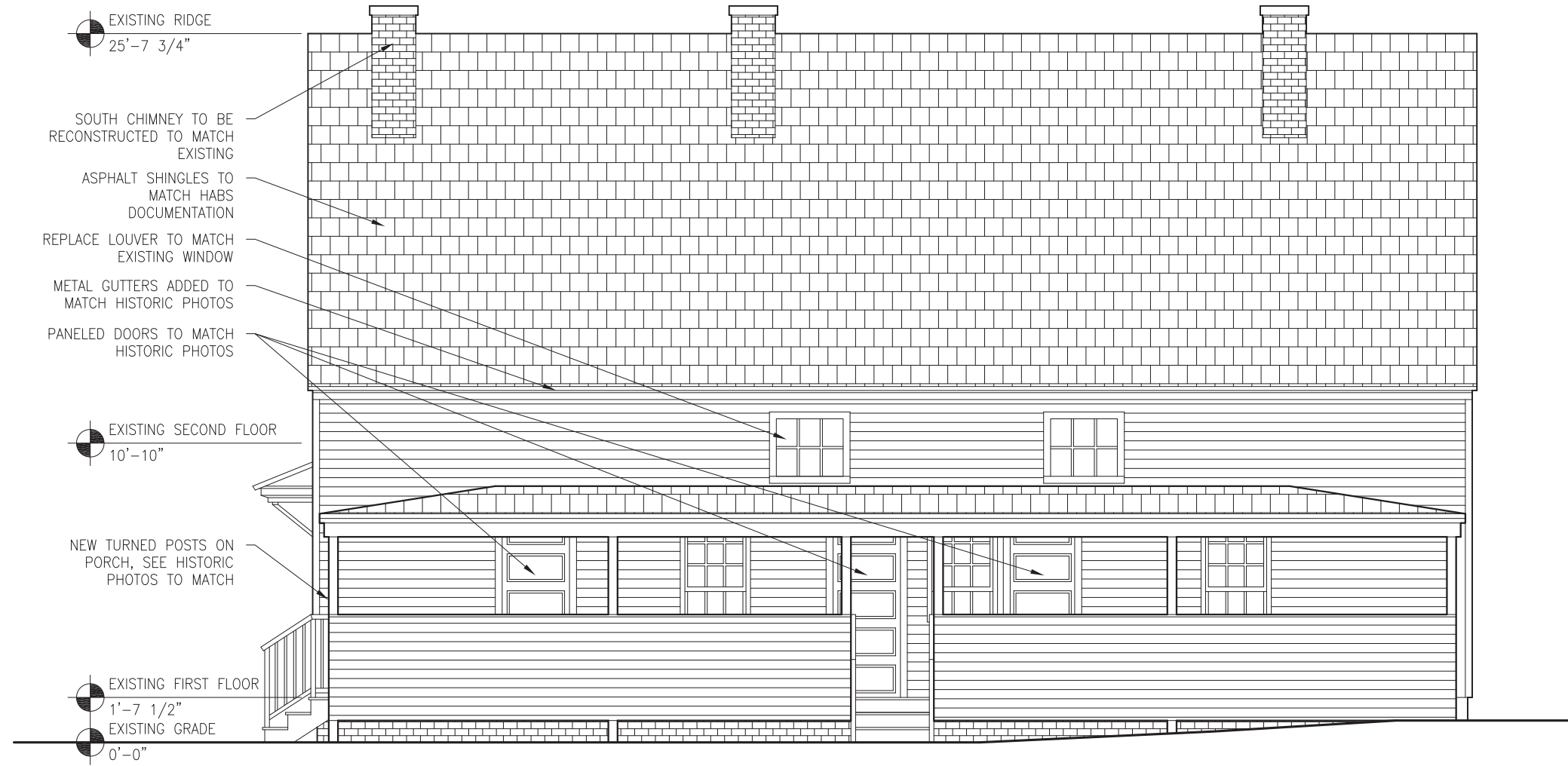
SCALE: 3/16"=1'-0"



NORTH WEST ELEVATION

PROPOSED ELEVATIONS

SCALE: 3/16"=1'-0"



NORTH EAST ELEVATION

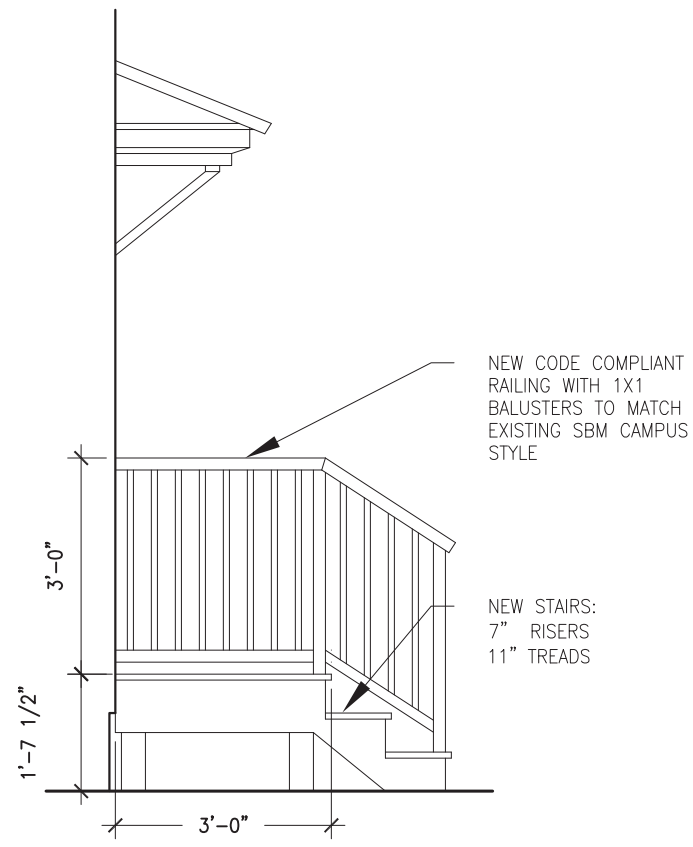
PROPOSED ELEVATIONS

SCALE: 3/16"=1'-0"

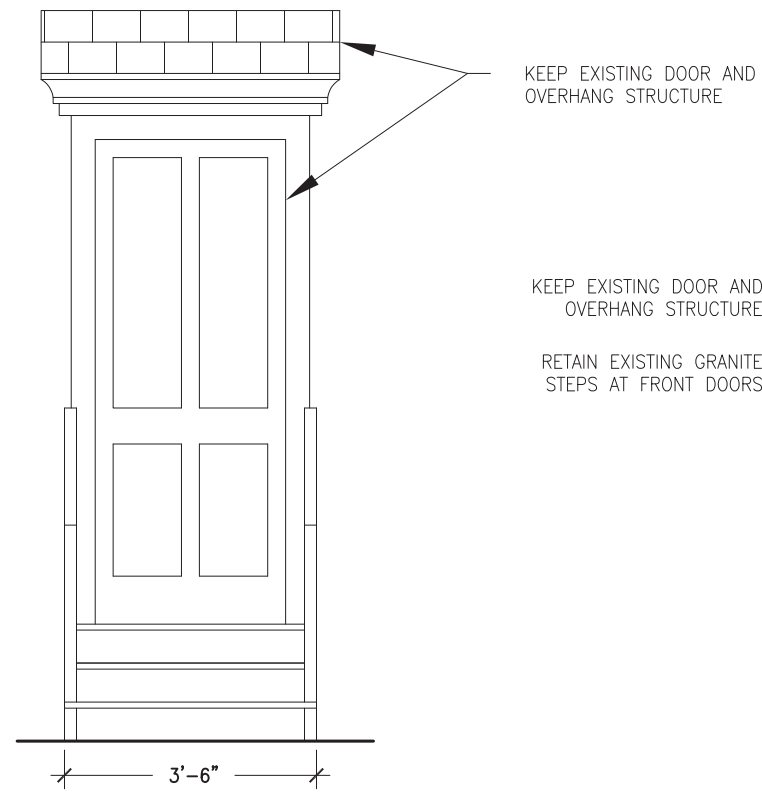


SOUTH EAST ELEVATION

SCALE: 1/8"=1'-0"

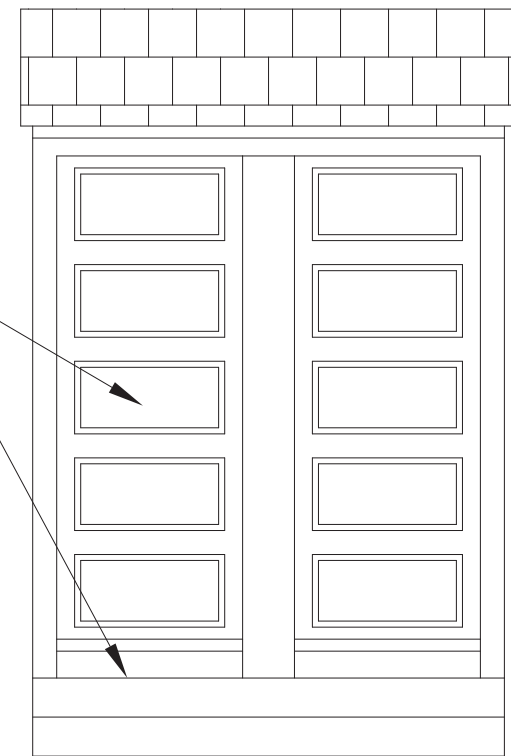


SOUTH EAST STAIR DETAIL



KEEP EXISTING DOOR AND OVERHANG STRUCTURE

RETAIN EXISTING GRANITE STEPS AT FRONT DOORS



FRONT DOOR DETAIL