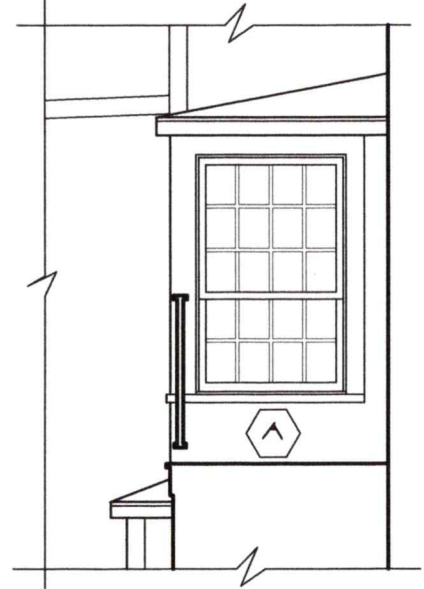
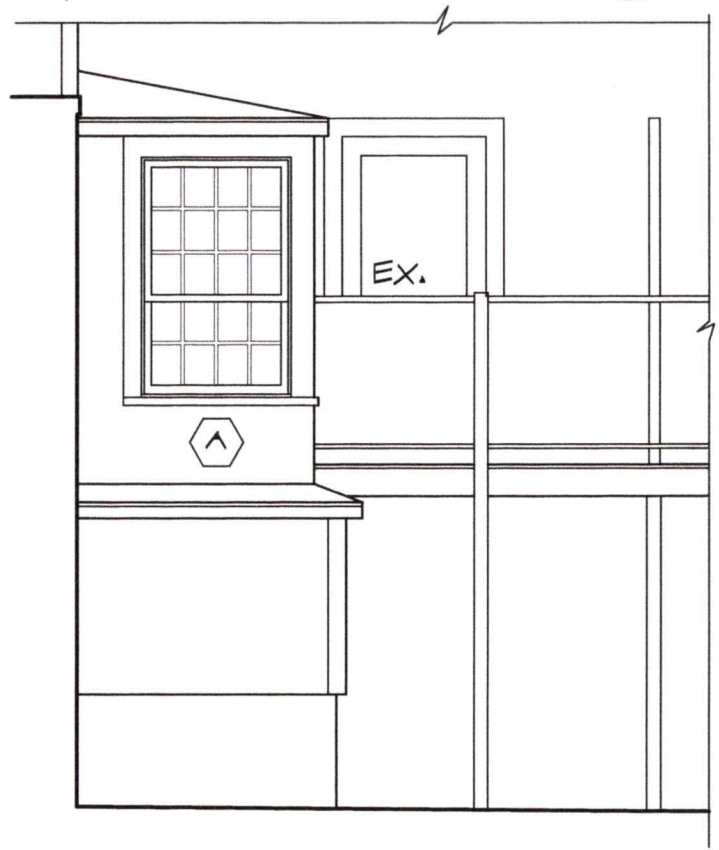
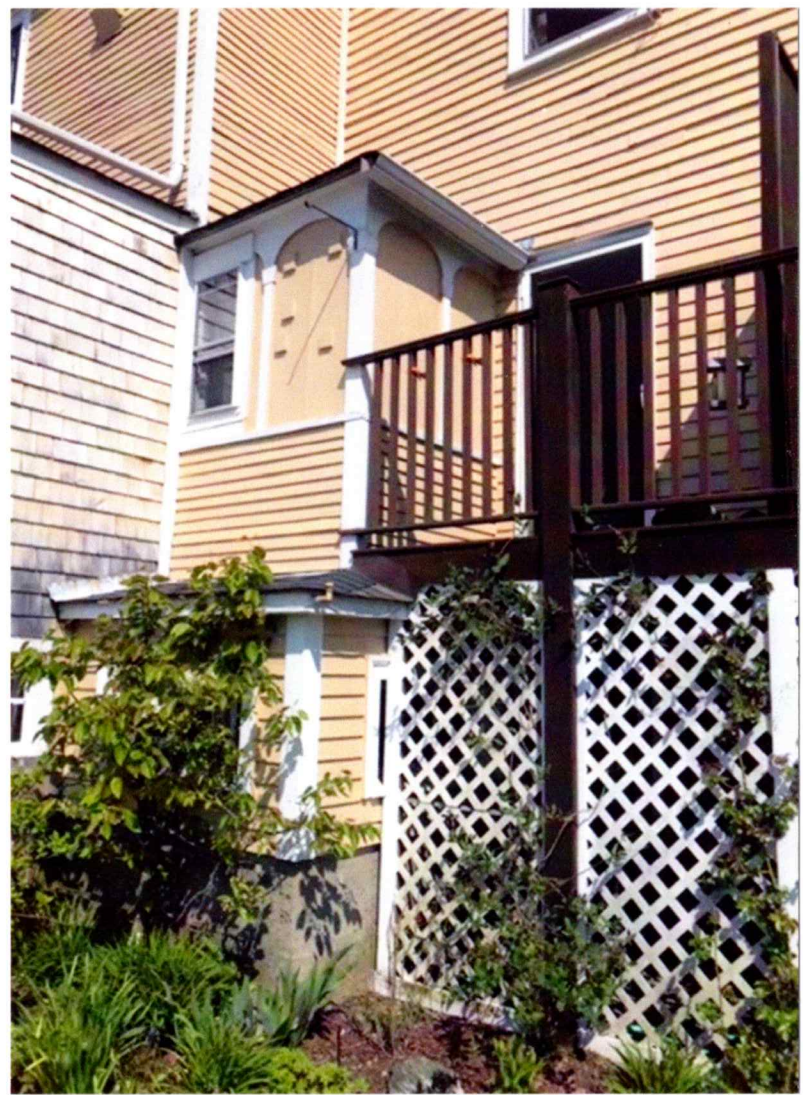


ELEVATIONS & PLAN
SCALE: 1/4" = 1'-0"



Ⓐ ELDH 3860, 12/1 REVERSE COTTAGE
MARVIN INC., ELEVATE, DOUBLETUNG,
7/8" SDL, EBONY CLADDING, RO = 3' 1/2" X 5' 0"



EXISTING REAR VIEW

19 SOUTH ST., UNIT 1

9 Sheafe Street
Portsmouth
NH 03801
603-427-2832





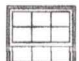
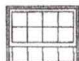
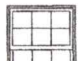
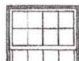
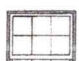
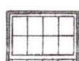
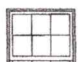
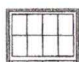
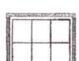
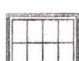


ANNE WHITNEY ARCHITECT

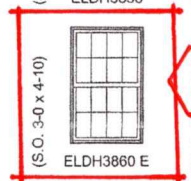
Project:	Date:	
• 2010	6/24/20	1 OF 2

ELEVATE

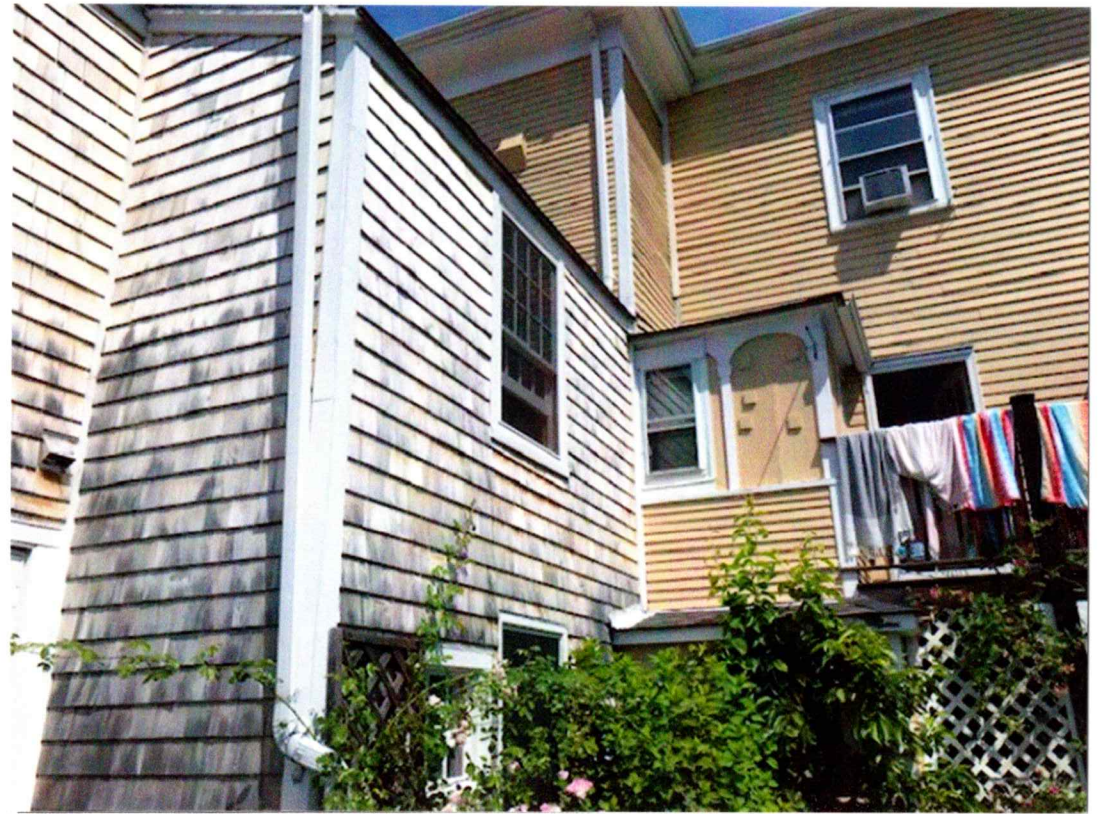
MARVIN ELEVATE™ COLLECTION

DOUBLE HUNG

MO (mm)	3-0 (914)	3-2 (965)
RO (mm)	3-0 1/2 (927)	3-2 1/2 (978)
FS (mm)	2-11 1/2 (902)	3-1 1/2 (953)
DLO (mm)	2-5 11/16 (754)	2-7 11/16 (805)
3-0 (914)		
3-0 1/4 (921)	ELD3636	ELD3836
3-4 (1016)		
3-4 1/4 (1022)	ELD3640	ELD3840
3-8 (1176)		
3-8 1/4 (1124)	ELD3644	ELD3844
4-0 (1219)		
4-0 1/4 (1225)	ELD3648	ELD3848
4-4 (1321)		
4-4 1/4 (1327)	ELD3652	ELD3852
4-8 (1422)		
4-8 1/4 (1429)	ELD3656	ELD3856
5-0 (1524)		
5-0 1/4 (1530)	ELD3660 E	ELD3860 E



12/3 REVERSE COTTAGE



EXISTING REAR VIEW

19 SOUTH ST., UNIT 1

9 Sheafe Street
Portsmouth
NH 03801
603-427-2832



ANNE WHITNEY ARCHITECT

Project:	Date:	
# 2010	6/24/20	2 OF 2