

*For Public Hearing

Application for Certificate of Approval

Historic District Commission

(For projects over \$25,000; Work Sessions are strongly recommended)



Owner: Heitker Frank G Revoc Trust Agreement Applicant (if different): _____
 Address: 37 Skate Street Address: _____
(Street) (Street)
Portsmouth, NH 03801 _____
(City, State, Zip) (City, State, Zip)
 Phone: _____ Phone: _____
 Signature: [Handwritten Signature]

Location of Structure: Map 107 Lot 19 Street Address: 37 Skate Street

Building Permit #: _____

To permit the following: Second story addition over existing kitchen + enlarge existing mudroom

Action Taken by H.D. C. at Public Hearing	
Date of Approval:	
As Per Plan:	
Stipulations:	
Signature of Principal Planner:	

Administrative Use Only:
 Date of Meeting: 12-5-18
 Payment: \$100.00
 Payment Type: OR # 5810
 Index/Permit #: _____

If approved, please acknowledge below:

I hereby acknowledge that all changes or variation in the design as presented shall require further Historic District Commission approval.

Owner _____

37 SHEAFE STREET



Historic District Commission - Work Session/Public Hearing - December 2018, Portsmouth, New Hampshire

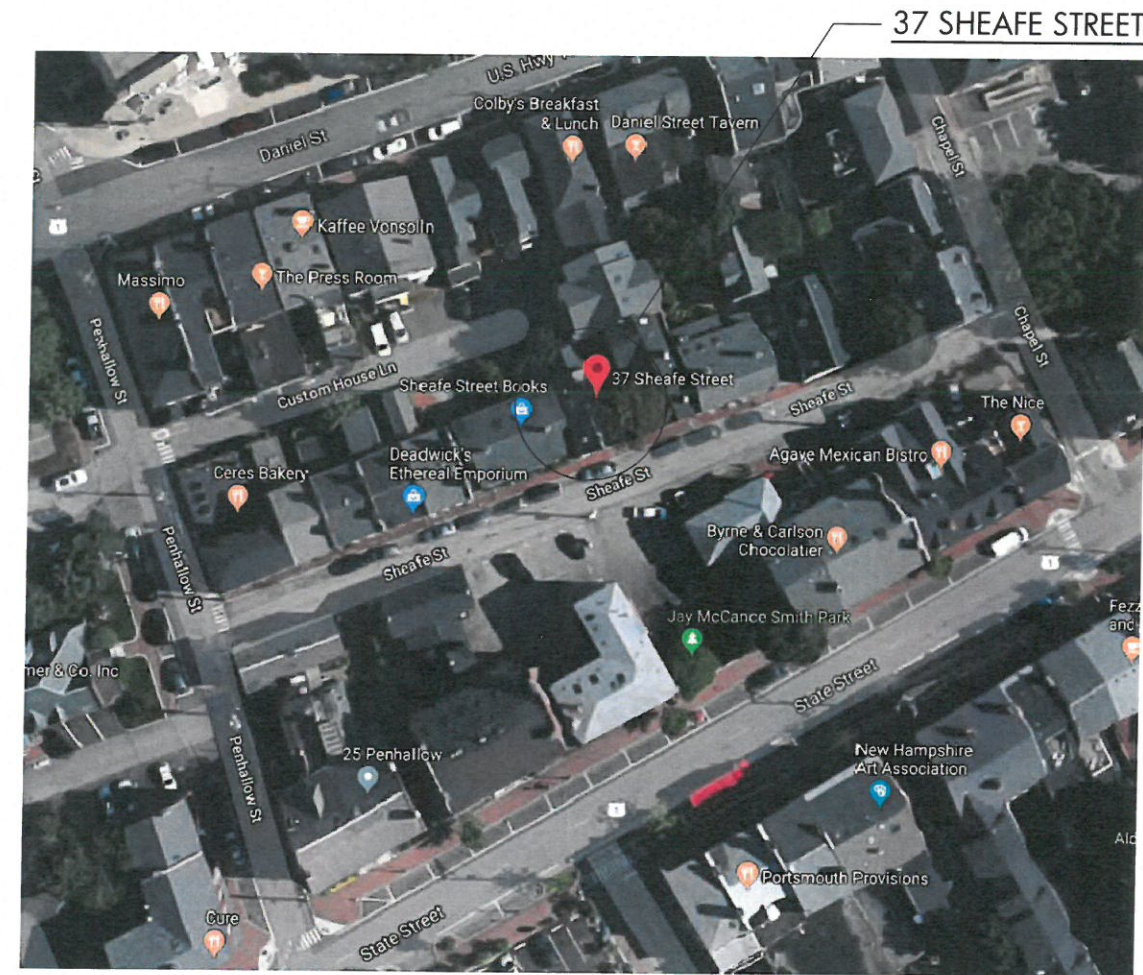
Zoning: CD-4

Project Description:

This project is the renovation and addition to an existing home on 37 Sheafe Street. The proposed project includes extending the second story above the existing kitchen to create a master bed and bathroom and to renovate the existing kitchen and mudroom access.



SHEAFE STREET VIEW



LOCUS MAP



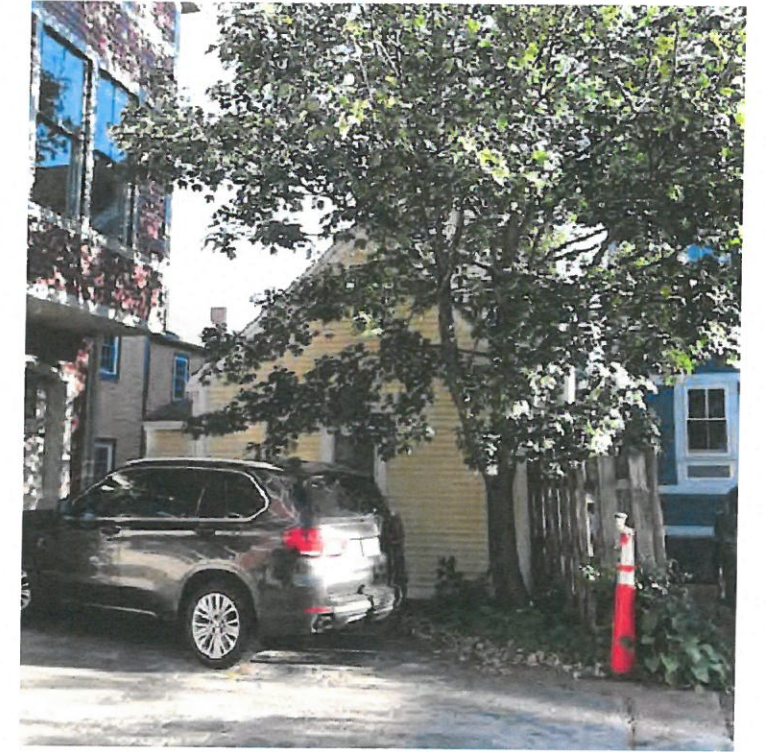
VIEW FROM SHEAFE STREET



VIEW FROM SHEAFE STREET



VIEW DOWN LEFT PROPERTY LINE FROM SHEAFE STREET



VIEW OF PROPERTY FROM CUSTOM HOUSE COURT



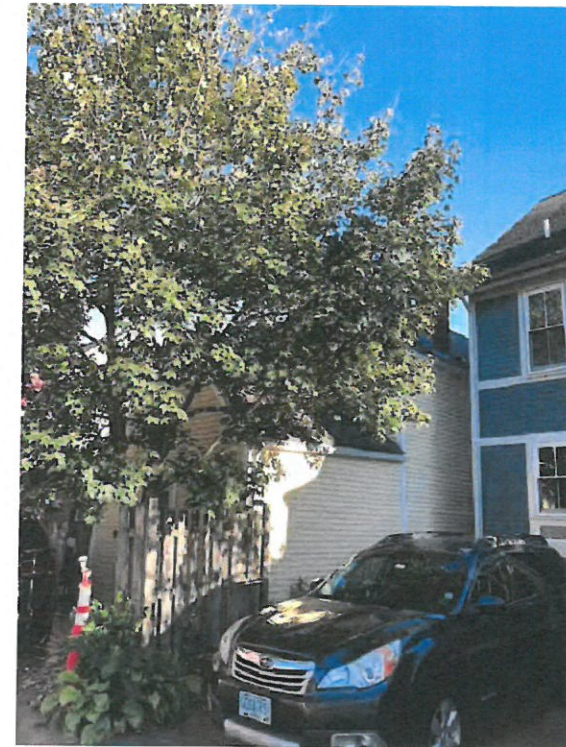
VIEW OF ENTRY SIDE



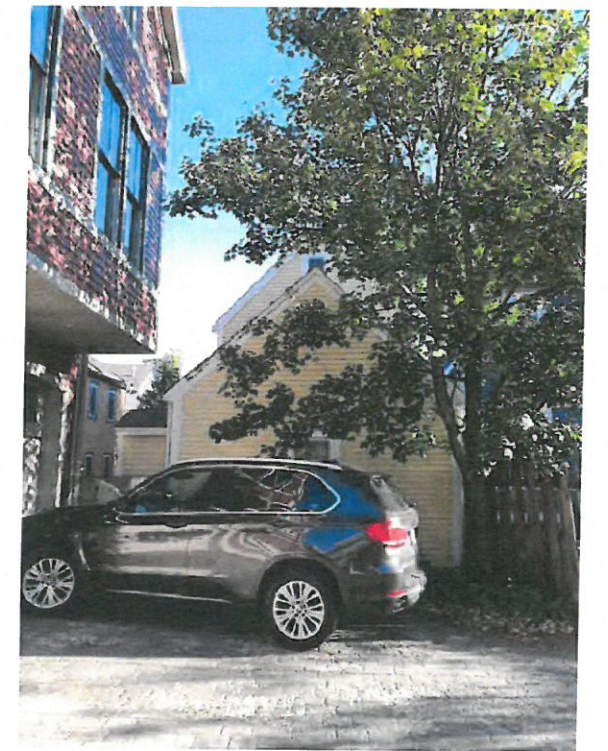
VIEW OF ENTRY SIDE



VIEW OF MUDROOM



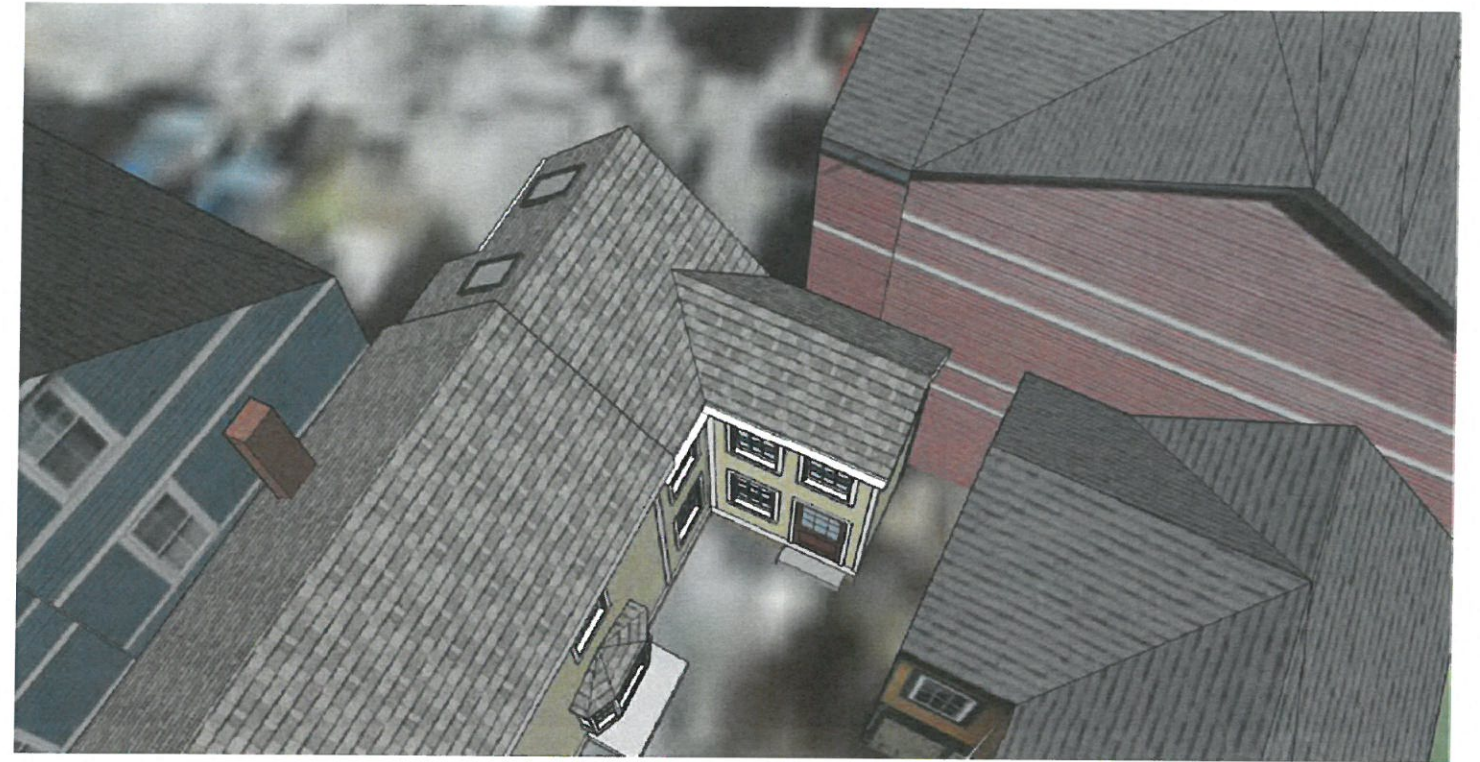
VIEW OF BACK OF BUILDING



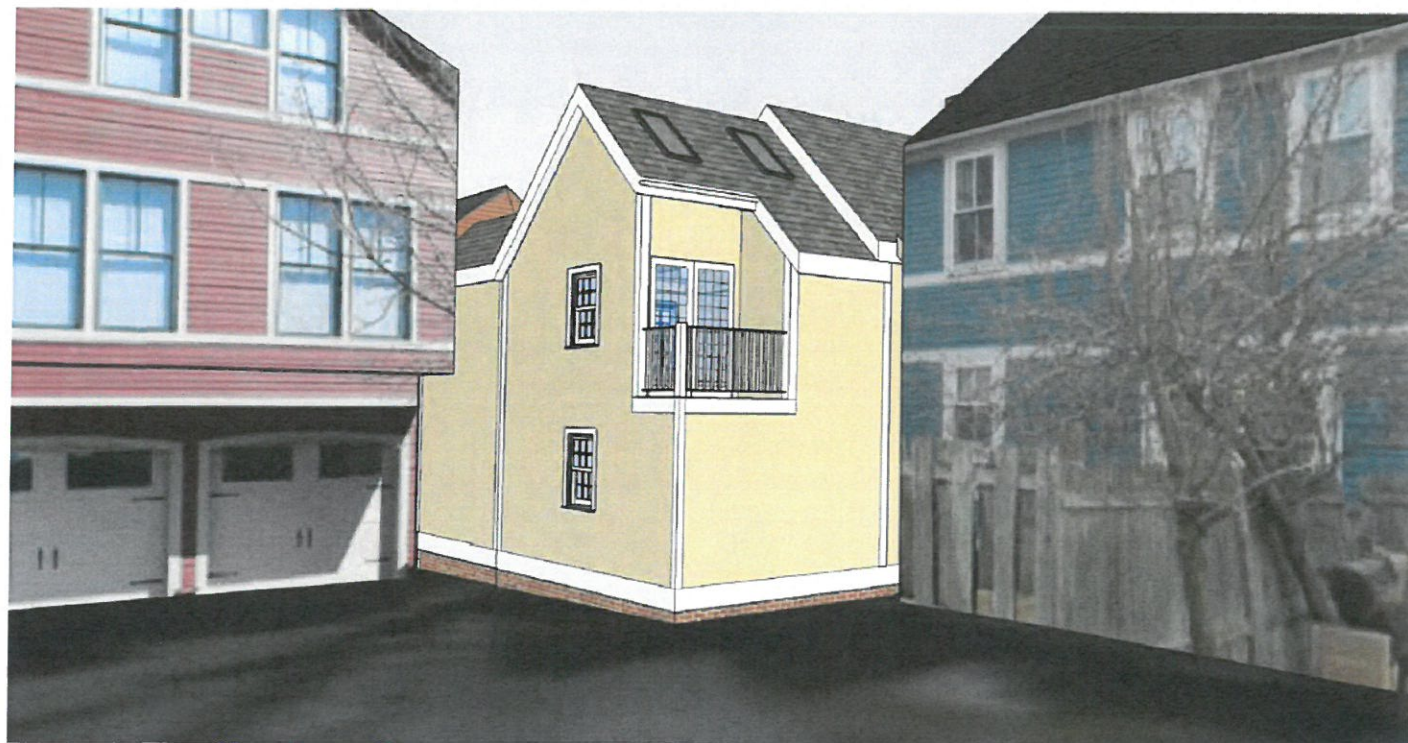
VIEW OF BACK OF BUILDING



VIEW FROM SHEAFE STREET



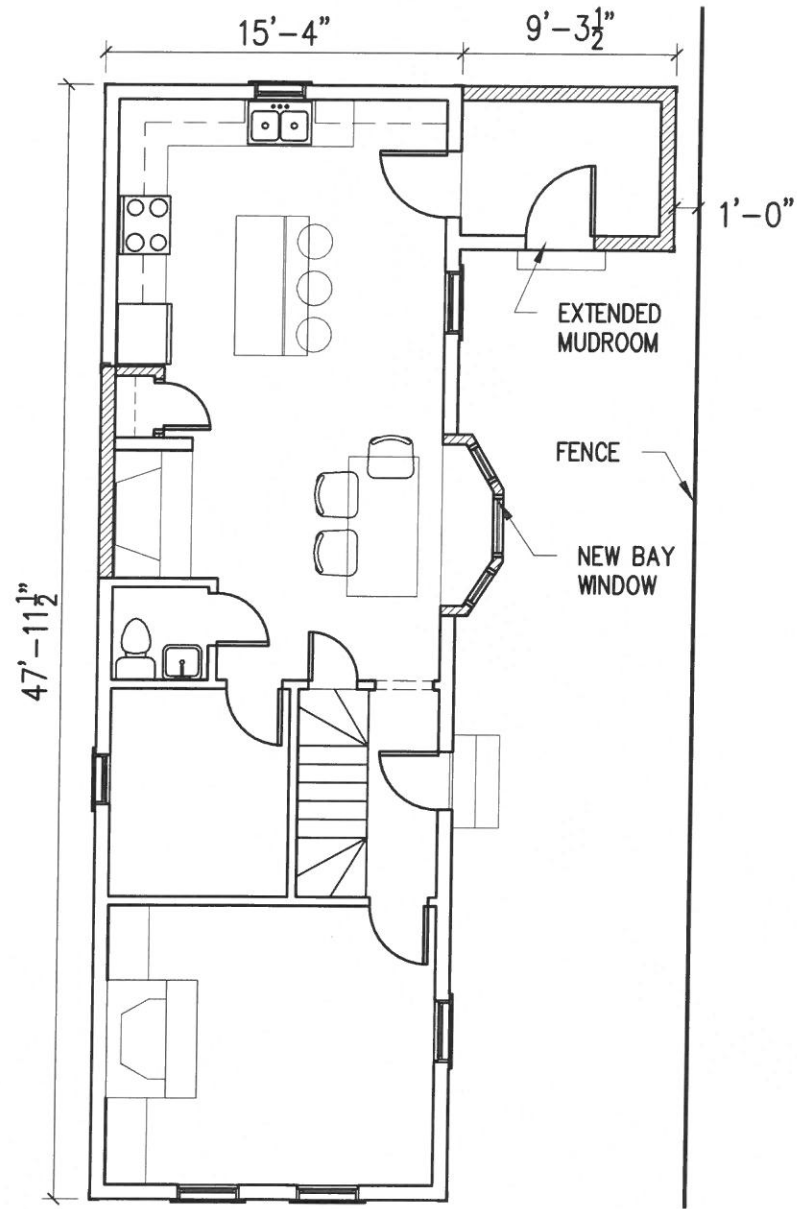
AERIAL VIEW



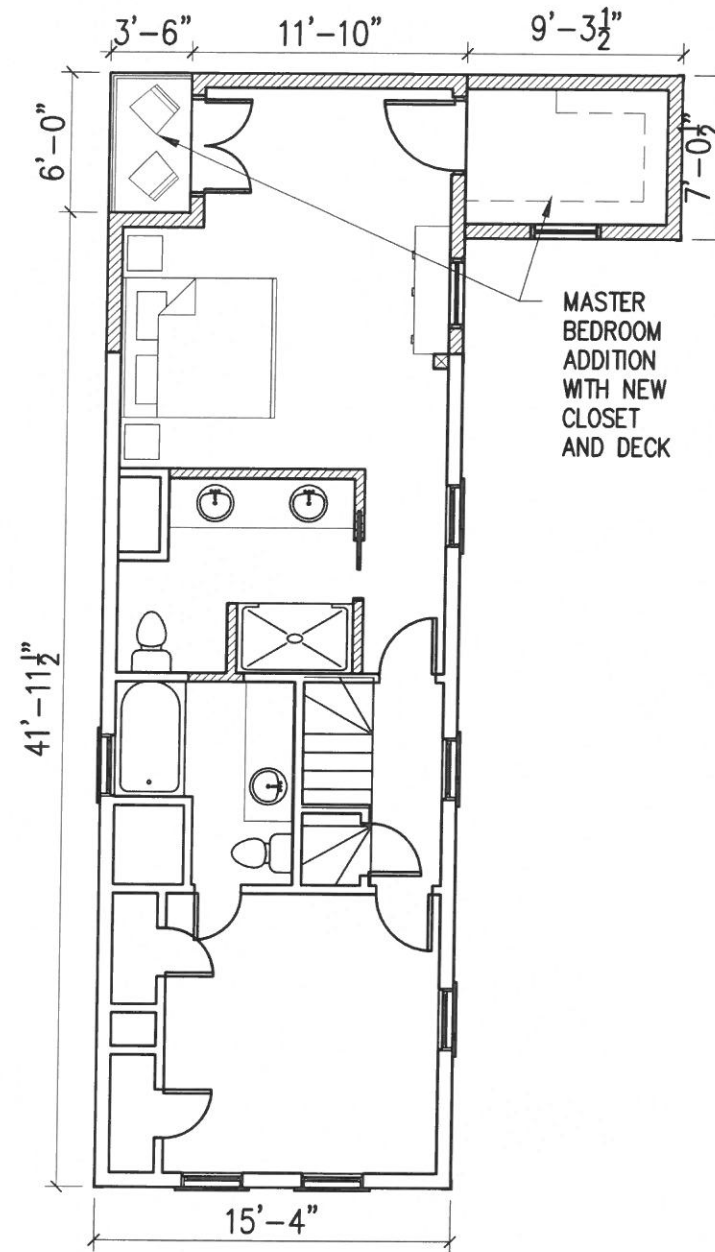
VIEW FROM CUSTOM HOUSE COURT



AERIAL VIEW



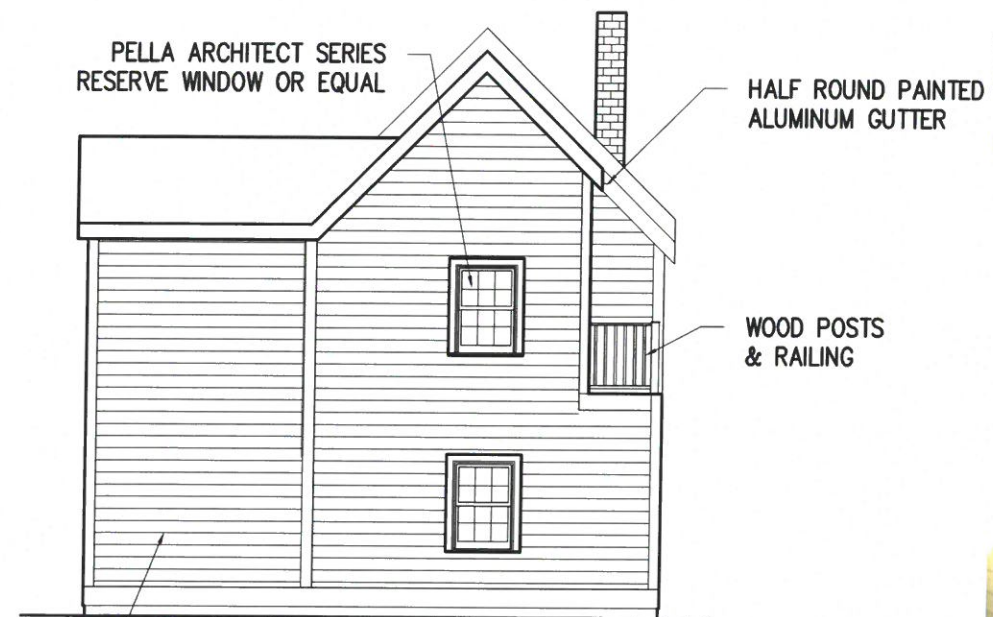
PROPOSED FIRST FLOOR PLAN



PROPOSED SECOND FLOOR PLAN



EAST ELEVATION



NORTH ELEVATION



REUSE/RELOCATE EXISTING GRANITE S



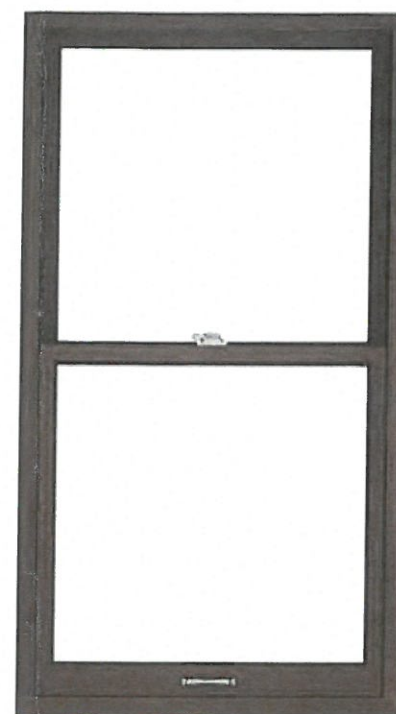
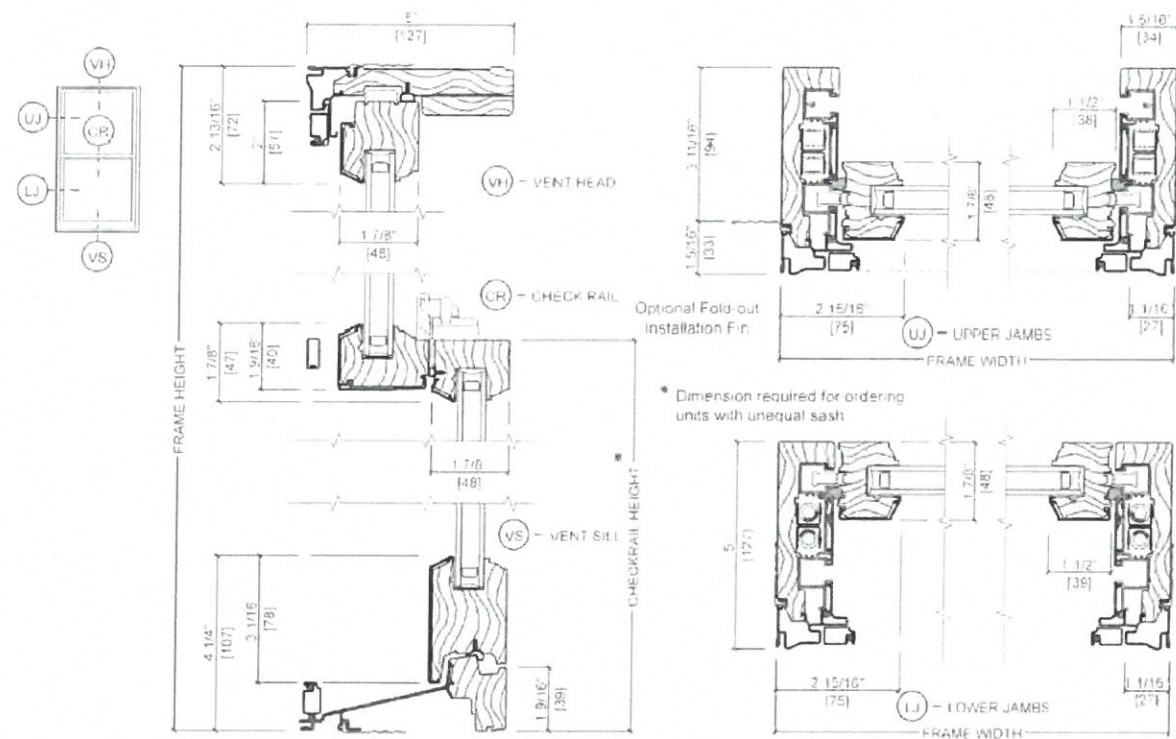
SOUTH ELEVATION



WEST ELEVATION

UNIT SECTIONS

Aluminum-Clad Wood Exterior
Vent and Fixed - Putty Exterior Glazing Profile



WINDOWS

DETAILED PRODUCT DESCRIPTIONS

Aluminum-Clad Exterior
Double-, Single- and Simulated-Hung



FRAME

- Select softwood, immersion treated with Pella's EnduraGuard® wood protection formula in accordance with WDMA 5-4. The EnduraGuard formula includes three active ingredients for protection against the effects of moisture, decay, stains from mold and mildew. Plus, an additional ingredient adds protection against termite damage.
- Interior exposed surfaces are clear pine [mahogany] [Douglas fir]. Any curved member may have white finger-jointed surfaces.
- Exterior surfaces are clad with extruded aluminum but joints at all corners of the sash with through style construction and sealing.
- Corners mortised and tenoned, glued and secured with metal screws.
- Sash thickness is 1.78" (47mm).
- Double Hung: Upper sash has surface-mounted wash locks for easy tilt in cleaning. Single Hung: Fixed upper sash has surface-mounted wash locks. Lower sash has concealed wash locks in lower check rail allowing sash to tilt in for easy cleaning.
- Simulated Hung units have non-operable upper and lower sashes.
- Sash exterior profile is [ogee] [putty glaze] interior profile is ogee.

SASH

- Select softwood, immersion treated with Pella's EnduraGuard® wood protection formula in accordance with WDMA 5-4. The EnduraGuard formula includes three active ingredients for protection against the effects of moisture, decay, stains from mold and mildew. Plus, an additional ingredient adds protection against termite damage.
- Interior exposed surfaces are clear pine [mahogany] [Douglas fir]. Any curved member may have white finger-jointed surfaces.
- Exterior surfaces are clad with extruded aluminum but joints at all corners of the sash with through style construction and sealing.
- Corners mortised and tenoned, glued and secured with metal screws.
- Sash thickness is 1.78" (47mm).
- Double Hung: Upper sash has surface-mounted wash locks for easy tilt in cleaning. Single Hung: Fixed upper sash has surface-mounted wash locks. Lower sash has concealed wash locks in lower check rail allowing sash to tilt in for easy cleaning.
- Simulated Hung units have non-operable upper and lower sashes.
- Sash exterior profile is [ogee] [putty glaze] interior profile is ogee.

WEATHERSTRIPPING

- Water stop semi-rigid neoprene wrapped foam at head and sill.
- Thermoplastic elastomer bulb with slip coating set into lower sash for tight contact at check rail.
- Vinyl-wrapped foam inserted into jamb liner to seal against sides of sash.

GLAZING SYSTEM

- Quikly float glass complying with ASTM C 1025.
- Custom seal high airtight glazing available.
- Silicone glazed dual-pane 1/8" dual-seal [annealed] [tempered] [clear] [Advanced Low E] [SunDefense™ Low E] [NaturaSun Low E] [Advanced Low E] with argon] [Bronze] [gray] [green] [Advanced Low E (with Argon)] [ultra-clear] [Reflective Bronze] - or -
- Silicone glazed dual-pane 1/8" dual-seal [annealed] [tempered] [non-impact laminated glass] [clear] [Advanced Low E] [SunDefense™ Low E] with Argon] [bronze] [gray] [green] [Advanced Low E (with argon)] [Reflective Bronze] - or -

EXTERIOR

- Aluminum-clad exterior shall be finished with EnduraClad® protective finish in a multi-step baked-on finish.
 - Color is [standard] [custom].
- Aluminum-clad exterior shall be finished with EnduraClad Plus protective finish with 70% fluoropolymer resin in a multi-step, baked-on finish.
 - Color is [standard] [custom].

INTERIOR

- [Unfinished, ready for site finishing] [factory primed with one coat acrylic latex] [factory prefinished] [White] [Linen White] [Bright White] [Ivory].

(1) Contact your local Pella sales representative for current design and color options.
 (2) Available in clear or Low E insulating glass only. White exterior grille color is the only option for clear insulating glass.
 (3) For Brown and Putty interior GFS colors are available in single-pane (Biphen Brown, Earth or Putty) or dual-pane. Other colors are also available with Tan or Brown exterior.
 (4) Appearance of exterior grille color will vary depending on Low E coating on glass.
 (5) Full screens are available to user's 96" height.
 (6) Wood View screens are available when screen height is 64" or above but Low E with and frame height is 47"

HARDWARE

- Galvanized hook and tackle balancers are connected to self-locking ball-bearing shoes which are connected to the sashes using zinc die cast terminals and concealed within the frame.
- Sash lock is standard (same as on) [historic spoon style] [low condensation lock] [simulated lock (Single-pane lock ties upper and lower sash together). When removed lower sash becomes operable]. Two sash locks on units with frame width 37" and greater.
- Optional sash lift furnished for field installation. Two lifts on units with frame width 37" and greater.
- Hardware finish is [baked enamel] [Champagne] [White] [Brown] [Matte Black] [Bright Brass] [Satin Nickel] [Oil-rubbed Bronze] [Antique Brass] [Distressed Bronze] [Distressed Nickel].

OPTIONAL PRODUCTS

- Sash**
 - Exterior sash legs.
 - Optional factory applied accessory Exterior finish is [Standard] [Custom].
- Grilles**
 - Integrated Light Technology™ grilles.
 - Interior grilles are [5/8" [17/8" [1 1/4" [2" ogee profile that are solid [laminated] [mahogany] [Douglas fir] interior surfaces are unfinished, ready for site finishing] [factory primed] [Ivory] [factory prefinished] [White] [Linen White] [Bright White] [Ivory].
 - Exterior grilles are [5/8" [putty glaze profile] [1 7/8" [putty glaze] [ogee profile] [1 1/4" [putty glaze] [ogee profile] [2" ogee profile] that are extruded aluminum.
 - Patterns are [Traditional] [Pine Row] [New England] [Victorian].
 - Insulating glass contains non-glaze spaces between the panes of glass.
 - Grilles are adhered to both sides of the insulating glass with M60 weight adhesive tape and aligned with the non-glaze space or
 - Grilles Between the Glass
 - Insulating glass contains 3/4" contoured aluminum grilles permanently installed between two panes of glass.
 - Patterns are [Traditional] [Pine Row] [New England] [Victorian].
 - Interior color is [White] [Ivory] [Brown] [Putty] [Ivory] [Blackstone] [Harvest] [Cordovan].
 - Exterior color is [standard].
- Recessed Removable Grilles**
 - [3/4" [1 1/4" [2" [traditional] [1 1/4" [2" colored] profile with [Traditional] [Pine Row] patterns that are removable solid pine wood bars steel pinned at joints and fitted to sash with steel clips and caps.
 - Interior unfinished, ready for site finishing] [factory primed] [Ivory] [factory prefinished] [White] [Linen White] [Bright White] [Ivory].
 - Exterior [unfinished, ready for site finishing] [factory primed] [Ivory] [color matched to exterior cladding].

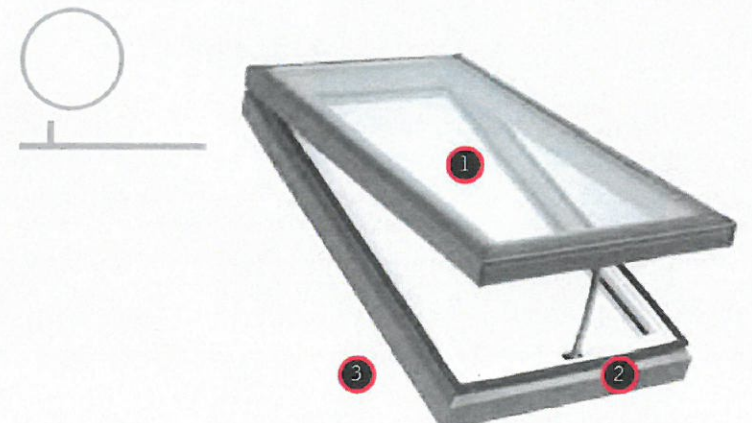
SKYLIGHTS

Skylight Sizes

Manual "Fresh Air" Skylight (1)

VS Size Code	C01	C04	C06	C08	M02	M04	M06	M08	S01	S06
Outside frame (W"xH")	21 1/2 X 27 3/8	21 1/2 X 38 3/8	21 1/2 X 46 1/4	21 1/2 X 54 1/16	30 9/16 X 30 1/2	30 9/16 X 38 3/8	30 9/16 X 46 1/4	30 9/16 X 54 1/16	44 3/4 X 27 3/8	44 3/4 X 46 1/4
Rough opening/ Finished frame (W"xH")	21 x 26 1/8	21 x 37 7/8	21 x 45 3/4	21 x 54 1/16	30 1/16 X 30	30 1/16 X 37 7/8	30 1/16 X 45 3/4	30 1/16 X 54 1/16	44 1/4 X 26 1/8	44 1/4 X 45 3/4

Price Range for a Single Manual "Fresh Air" Skylight Install




- 1 ✓ Clean, Quiet & Safe Glass
- 2 ✓ Manually Operated
- 3 ✓ No Leak Promise
- 4 ✓ Fresh Air

Grilles ARCHITECT SERIES TRADITIONAL

GRILLES

Choose the look of true divided light, removable roomside grilles or make cleaning easier by selecting grilles-between-the-glass.



Ogee Integral Light Technology
7/8", 1-1/4" OR 2"



ALUMINUM GRILLES BETWEEN-THE-GLASS
3/8"

GRILLES-BETWEEN-THE-GLASS INTERIOR COLORS:












WHITE	IVORY	TAN
PUTTY	BROWN	HARVEST
BRICKSTONE	CORDOVAN	BLACK
MORNING SKY GRAY	SAND DUNE	



ROOMSIDE REMOVABLE GRILLES
3/4", 1-1/4" OR 2"

GRILLE PATTERNS

In addition to the patterns shown here, custom grille patterns are available.

					
TRADITIONAL	9 LITE PRAIRIE	12 LITE PRAIRIE	14 LITE PRAIRIE	VICTORIAN	TOP ROW
					
CROSS	NEW ENGLAND	DIAMOND	SIMULATED FRENCH	CUSTOM	

FRENCH DOORS



Architect Series Traditional double-hung window



WOOD

Architect Series Traditional

888-8888

FEATURES

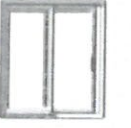
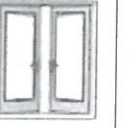
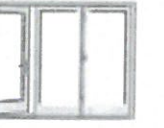
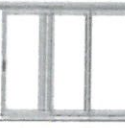
Classic aesthetics featuring fine-furniture details
 Virtually unlimited design choices including custom sizes and grille patterns
 Stunning hardware in rich patinas and other timeless finishes

WINDOW STYLES

Custom sizes and fixed configurations are also available.

				
AWNING	BAY OR BOW	CASEMENT	DOUBLE-HUNG	SINGLE-HUNG

PATIO DOOR STYLES

			
SLIDING	HINGED	BIFOLD	MULTI-SLIDE

