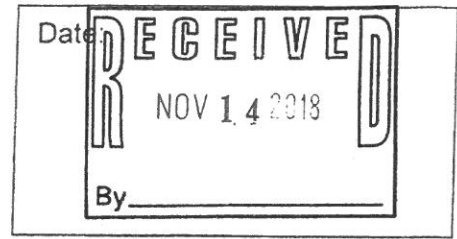


*For Public Hearing

Application for Certificate of Approval

Historic District Commission

(For projects over \$25,000; Work Sessions are strongly recommended)



Owner: Kim Iguchi and Paul Gornitzky Applicant (if different): Kristi Kenney
 Address: 80 Broad St. Unit 808 Address: PO Box 404
(Street) (Street)
Boston, MA 02110 Wells me 04043
(City, State, Zip) (City, State, Zip)
 Phone: 617-901-3508 Phone: 207-832-9199
 Signature: [Handwritten Signature]

Location of Structure: Map 102 Lot 033 Street Address: 50 Salter St.

Building Permit #: _____

To permit the following: Interior renovations replace existing rear door and replace one double hung windows with three new, larger double hung windows

Action Taken by H.D. C. at Public Hearing	
Date of Approval:	
As Per Plan:	
Stipulations:	
Signature of Principal Planner:	

Administrative Use Only:

Date of Meeting: Dec. 5th 2018

Payment: 100⁻

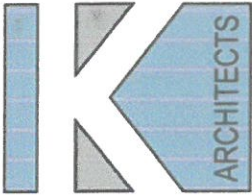
Payment Type: _____

Index/Permit #: _____

If approved, please acknowledge below:

I hereby acknowledge that all changes or variation in the design as presented shall require further Historic District Commission approval.

Owner _____



NOV 14 2018

11/12/2018

Nick Cracknell &
Members of the Historic District Commission
City of Portsmouth
1 Junkins Ave, 3rd Floor
Portsmouth, NH 03801

Dear Mr. Cracknell & Members of the Historic District Commission,

I am applying for approval to some minor renovations to the existing single family house located at 56 Salter Street. Our scope of exterior work is the following:

- Add (3) new double hung windows near and facing the view and the detached garage
- Replace the side yard door from the garage into the house
- Replace the back-yard door from the kitchen into the house
- Add a window on the side façade which will match the existing kitchen window on the same façade.

There will be NO exterior changes to the front, street side façade.

Please feel free to contact me if you have any questions or concerns.

Sincerely,
KW Architects

A handwritten signature in black ink, appearing to read 'K Kenney', is written over a light blue horizontal line.

Kristi Kenney, AIA, Maine Registered Architect

Kristi Kenney, RA/LEED NC BD+C
PO Box 404
Wells, Maine 04090

(207) 332-9199
kristi@maine-architects.com
www.maine-architects.com

Maine Registered Architect

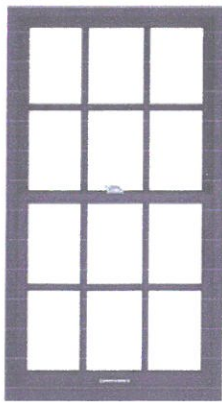
RECEIVED
NOV. 14 2018
By _____



WOOD

Architect Series® Reserve™

\$\$\$\$-\$\$\$\$\$



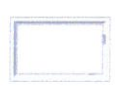
Architect Series Reserve double-hung window

FEATURES

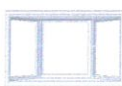
- Historically accurate wood products with detailed craftsmanship
- Exceptional durability with extruded aluminum cladding
- Virtually endless customization with shapes, sizes and colors

WINDOW STYLES

Special shapes, custom sizes and fixed configurations are also available.



AWNING



BAY OR BOW



CASEMENT



DOUBLE-HUNG



SINGLE-HUNG

PATIO DOOR STYLES



SLIDING



HINGED



Colors & Finishes ARCHITECT SERIES® RESERVE™

WOOD TYPES

Choose the wood species that best complements your home's interior. White oak, red oak, cherry and maple are available as custom solutions.



PREFINISHED PINE INTERIOR COLORS

When you select pine, we can prefinish in your choice of seven stains or three paint colors. Unfinished or primed and ready-to-paint are also available.



ALUMINUM-CLAD EXTERIOR COLORS

Our low-maintenance EnduraClad® exterior finish resists fading. Take durability one step further with EnduraClad Plus which also resists chalking and corrosion.¹ Custom colors are also available.



ANODIZED EXTERIOR FINISHES

Choose a premium matte look with a decorative, durable exterior. Custom champagne, medium bronze, extra dark bronze and copper anodized finishes are also available.



¹ EnduraClad Plus protective finish is not available with all colors. See your local Pella sales representative for availability.

Grilles ARCHITECT SERIES® RESERVE™

GRILLES

Choose the look of true divided light, removable roomside grilles or make cleaning easier by selecting grilles-between-the-glass.

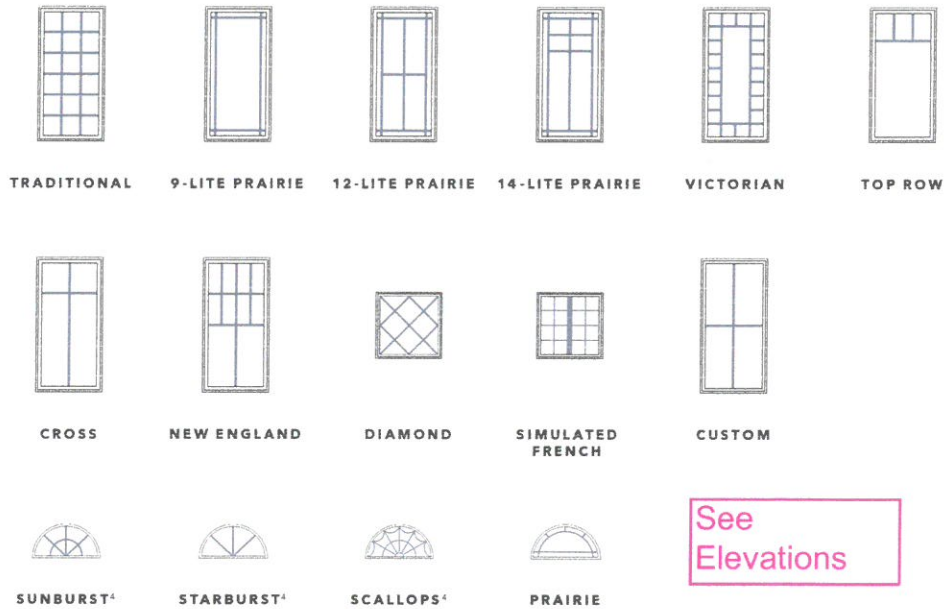


GRILLES-BETWEEN-THE-GLASS INTERIOR COLORS:²



GRILLE PATTERNS

In addition to the patterns shown here, custom grille patterns are available.



See Elevations

¹ Color-matched to your product's interior and exterior color.

² Appearance of exterior grille color may vary depending on the Low-E insulating glass selection.

³ Only available with matching interior and exterior colors.

⁴ Only available with a curved product or curved glass.

Window Hardware ARCHITECT SERIES® RESERVE™

CLASSIC COLLECTION

Get a timeless look with authentic styles in classic finishes.

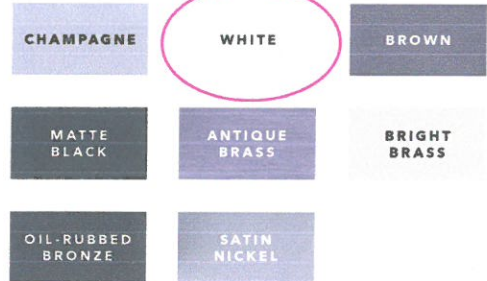


**FOLD-AWAY
CRANK**
Antiek



**SPOON-STYLE
LOCK**

FINISHES:



RUSTIC COLLECTION

Create a distinct and charming look with distressed finishes.



**FOLD-AWAY
CRANK**
Antiek



**SPOON-STYLE
LOCK**

FINISHES:



ESSENTIAL COLLECTION

Select from popular designs and finishes to suit every style.



**FOLD-AWAY
CRANK**



**CAM-ACTION
LOCK**

FINISHES:



Added Security

INSYNCTIVE® TECHNOLOGY

Choose optional built-in security sensors powered by Insynctive technology so you know at a glance if your windows are closed and patio doors are closed and locked.

Patio Door Hardware ARCHITECT SERIES® RESERVE™

CLASSIC COLLECTION

Choose timeless pieces for a look that will never go out of style.



**HINGED PATIO
DOOR HANDLES**
Locus | Virago



**SLIDING PATIO
DOOR HANDLE**
Ambrose

FINISHES:

MATTE
BLACK

ANTIQUE
BRASS

BRIGHT
BRASS

OIL-RUBBED
BRONZE

SATIN
NICKEL

MODERN COLLECTION

Achieve the ultimate contemporary look with sleek finishes.



**HINGED PATIO
DOOR HANDLE**
Spiere



**SLIDING PATIO
DOOR HANDLE**
Plazo

FINISHES:

MATTE
BLACK

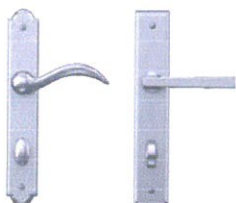
SATIN
NICKEL

POLISHED
CHROME

POLISHED
NICKEL

RUSTIC COLLECTION

Stand out with bold looks and create an utterly unique aesthetic.



**HINGED PATIO
DOOR HANDLES**
Rustiek | Gusto



**SLIDING PATIO
DOOR HANDLE**
Notus

FINISHES:

DISTRESSED
BRONZE

DISTRESSED
NICKEL

ESSENTIAL COLLECTION

Elevate your style and transform your home with elegant selections.



**HINGED PATIO
DOOR HANDLE**



**SLIDING PATIO
DOOR HANDLE**

FINISHES:

CHAMPAGNE

WHITE

BROWN

MATTE
BLACK

BRIGHT
BRASS

OIL-RUBBED
BRONZE

SATIN
NICKEL

Glass ARCHITECT SERIES® RESERVE™

INSULSHIELD® LOW-E GLASS

Advanced Low-E insulating dual- or triple-pane glass with argon or krypton^{1,2}
AdvancedComfort Low-E insulating dual-pane glass with argon¹
NaturalSun Low-E insulating dual- or triple-pane glass with argon or krypton^{1,2}
SunDefense™ Low-E insulating dual- or triple-pane glass with argon or krypton^{1,2}

ADDITIONAL GLASS OPTIONS

HurricaneShield® products with impact-resistant glass^{3,4}
Laminated (non-impact-resistant)^{3,4}, tinted^{1,3} or obscure^{1,3} glass also available on select products
STC (Sound Transmission Class)-improved dual-pane sound glass^{2,5}

Screens®

ROLSCREEN®

Rolscreen soft-closing retractable screens roll out of sight when not in use.
(Available on casement windows and sliding patio doors only.)

INTEGRATED ROLSCREEN

A fully concealed Rolscreen that moves seamlessly with the sash—appearing when you open the window and rolling completely away when you close it.
(Available on single- and double-hung windows only.)

FLAT

InView™ screens are clearer than conventional screens. Vivid View® window screens offer the sharpest view.

ADDITIONAL SCREEN OPTIONS⁷

Optional wood veneer can be added over the metal screen channel on interior screens to provide a more seamless look. Upgrade to a premium exterior screen for a more durable, extruded frame.

Standard Half Screen

¹ Optional high-altitude InsulShield Low-E glass is available with argon on select products.

² Available with Low-E insulating glass with argon on select products.

³ For best performance, the laminated glass may be in the interior or exterior pane of the insulating glass, depending on the product.

⁴ Available on select products only. See your local Pella sales representative for availability.

⁵ Sound control glass consists of dissimilar glass thickness (3mm/5mm).

⁶ Warning: Use caution when children or pets are around open windows and doors. Screens are not designed to retain children or pets.

⁷ Based on comparing written limited warranties of leading national wood window and wood patio door brands.

Want to learn more? Call us at 833-44-PELLA or visit pella.com



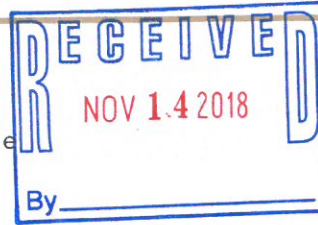
The confidence of Pella's warranty.

Architect Series® products are covered by the best limited lifetime warranty for wood windows and patio doors.⁷ See written limited warranty for details, including exceptions and limitations, at pella.com/warranty.

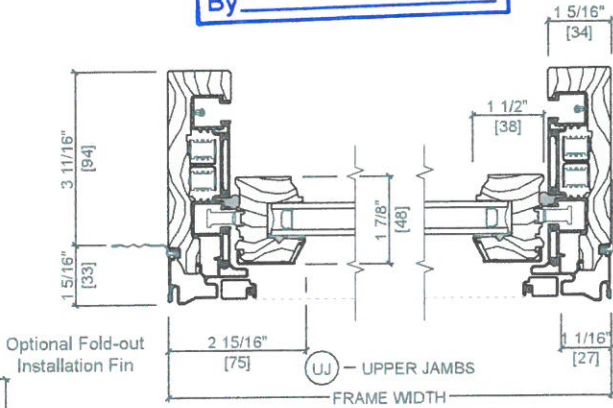
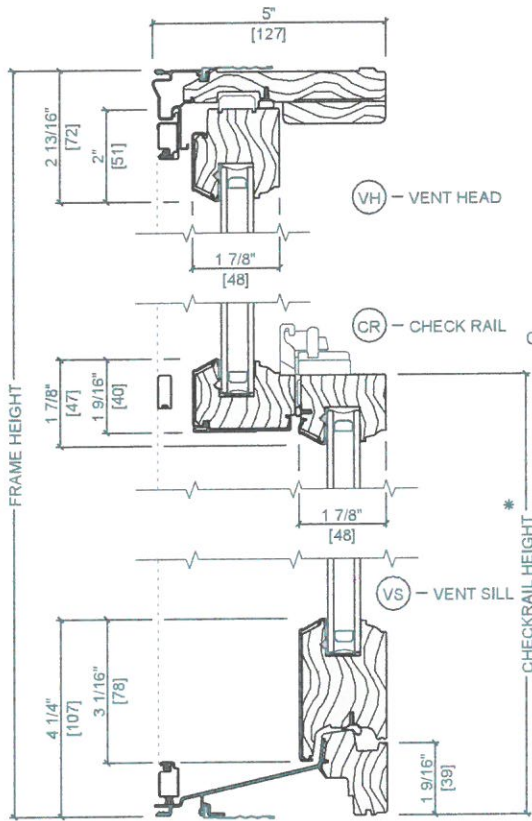
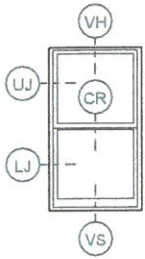
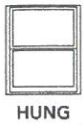


Connect with Pella:

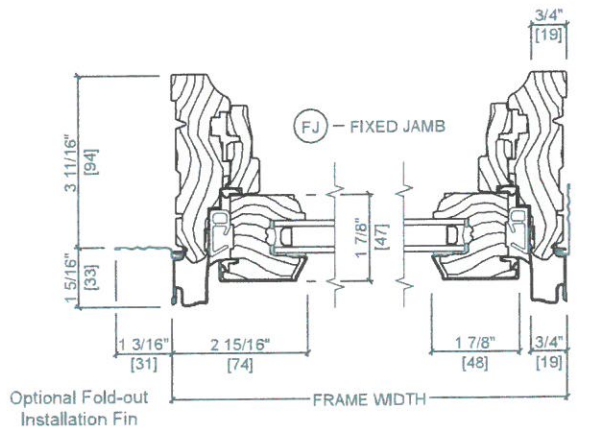
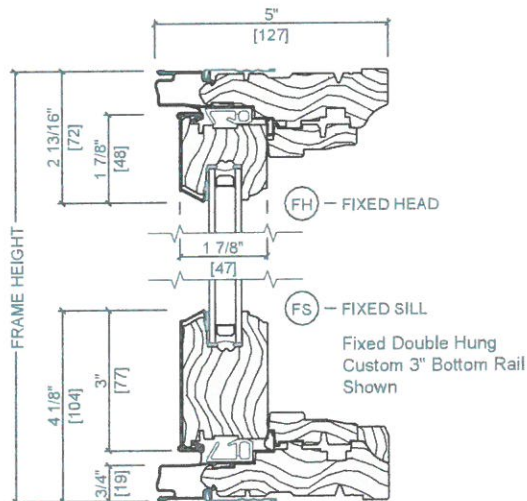
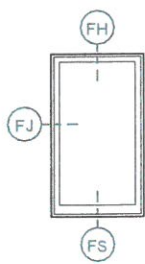
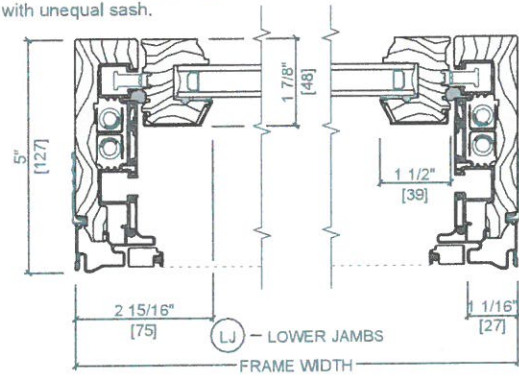




UNIT SECTIONS
 Aluminum-Clad Wood Exterior
 Vent and Fixed - Putty Glaze Exterior Profile



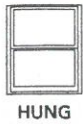
* Dimension required for ordering units with unequal sash.



Scale 3" = 1' 0"

All dimensions are approximate.

See www.PellaADM.com for mullion limitations and reinforcing requirements.



HUNG

DETAILED PRODUCT DESCRIPTIONS

Aluminum-Clad Exterior

Double-, Single- and Simulated-Hung



FRAME

- Select softwood, immersion treated with Pella's EnduraGuard® wood protection formula in accordance with WDMA I.S.-4. The EnduraGuard formula includes three active ingredients for protection against the effects of moisture, decay, stains from mold and mildew. Plus, an additional ingredient adds protection against termite damage.
- Interior exposed surfaces are [clear pine] [mahogany] [douglas fir].
- Exterior surfaces are clad with aluminum.
- Components are assembled with screws, staples and concealed corner locks.
- Overall frame depth is 5" (127mm) for a wall depth of 3-11/16" (94mm).
- Optional factory applied jamb extensions available between 3-13/16" (97mm) and 9-3/16" (233mm).
- Vinyl jamb liner with wood / clad inserts.
- Optional factory installed fold-out installation fins with flexible fin corners.
- Optional factory-applied EnduraClad® exterior trim.

SASH

- Select softwood, immersion treated with Pella's EnduraGuard® wood protection formula in accordance with WDMA I.S.-4. The EnduraGuard formula includes three active ingredients for protection against the effects of moisture, decay, stains from mold and mildew. Plus, an additional ingredient adds protection against termite damage.
- Interior exposed surfaces are [clear pine] [mahogany] [douglas fir]. Any curved member may have visible finger-jointed surfaces.
- Exterior surfaces are clad with extruded aluminum butt-jointed at all corners of the sash with through-stile construction and sealed.
- Corners mortised and tenoned, glued and secured with metal fasteners.
- Sash thickness is 1-7/8" (47mm).
- Double-Hung: Upper sash has surface-mounted wash locks for easy tilt-in cleaning [Single-Hung: Fixed upper sash has surface-mounted wash locks] [Arch Head units have no wash locks].
- Lower sash has concealed wash locks in lower check rail allowing sash to tilt in for easy cleaning.
- Simulated-Hung units have non-operable upper and lower sashes.
- Sash exterior profile is [ogee] [putty glaze], interior profile is ogee.

WEATHERSTRIPPING

- Water-stop santoprene-wrapped foam at head and sill.
- Thermoplastic elastomer bulb with slip-coating set into lower sash for tight contact at check rail.
- Vinyl-wrapped foam inserted into jamb liner to seal against sides of sash.

GLAZING SYSTEM

- Quality float glass complying with ASTM C 1036.
- Custom and high altitude glazing available.
- Silicone-glazed dual-pane 13/16" dual-seal insulating glass [[annealed] [tempered]], [[clear] [[Advanced Low-E] [SunDefense™ Low-E] [NaturalSun Low-E] [Advanced Comfort Low-E] with argon]] [[bronze] [gray] [green] Advanced Low-E [with Argon]] [obscure] [Reflective Bronze].
- Silicone-glazed dual-pane 13/16" dual-seal [[annealed] [tempered]] non-impact laminated glass [[clear] [[Advanced Low-E] [SunDefense Low-E] with Argon]] [[bronze] [gray] [green] Advanced Low-E [with argon]].

EXTERIOR

- Aluminum-clad exteriors shall be finished with EnduraClad® protective finish, in a multi-step, baked-on finish.
 - Color is [standard] [custom]₁.
- Aluminum-clad exteriors shall be finished with EnduraClad Plus protective finish with 70% fluoropolymer resin in a multi-step, baked-on finish.
 - Color is [standard] [custom]₁.
- Aluminum clad exteriors shall be finished with an anodized protective finish.
 - Color is [Clear] [Light Bronze] [Dark Bronze] [Black] [Custom]₁.

INTERIOR

- [Unfinished, ready for site finishing] [factory primed with one coat acrylic latex] [pine: factory prefinished [paint] [stain]₁].

(1) Contact your local Pella sales representative for current designs and color options.

(2) Available in clear or Low-E insulating glass only.

(3) Tan, Brown and Putty Interior GBG colors are available in single-tone (Brown/Brown, Tan/Tan or Putty/Putty). Other interior colors are also available with Tan or Brown exterior.

(4) Appearance of exterior grille color will vary depending on Low-E coating on glass.

(5) Full screens are available on units ≤ 96" height.

(6) Integrated Rolscreen only available on sizes ≥ 34" tall and 21" wide, and ≤ 84" tall and 48" wide.

(7) Vivid View screen is not available when frame height is > 84" or when both frame width and frame height are > 48".

HARDWARE

- Galvanized block-and-tackle balances are connected to self-locking balance shoes which are connected to the sashes using zinc die cast terminals and concealed within the frame.
- Sash lock is [standard (cam-action)] [historic spoon-style] [air-conditioner lock] [simulated lock (Single-piece lock ties upper and lower sash together. When removed lower sash becomes operable)]. Two sash locks on units with frame width 37" and greater.
- Optional sash lift furnished for field installation. Two lifts on units with frame width 37" and greater.
- Hardware finish is [baked enamel [Champagne] [White] [Brown] [Matte Black]] [Bright Brass] [Satin Nickel] [Oil-rubbed Bronze] [Antique Brass] [Distressed Bronze] [Distressed Nickel].

OPTIONAL PRODUCTS

Sash

- Exterior sash lugs
 - Optional factory applied accessory. Exterior finish is [Standard]₁ [Custom]₁.

Grilles

- Integral Light Technology® grilles
 - Interior grilles are [5/8"] [7/8"] [1-1/4"] [2"] ogee profile that are solid [pine] [mahogany] [douglas fir]. Interior surfaces are [unfinished, ready for site finishing] [factory primed] [pine: factory prefinished [paint] [stain] ₁].
 - Exterior grilles are [5/8" putty glaze profile] [7/8" putty glaze] [ogee] profile] [1-1/4" [putty glaze] [ogee] profile] [2" ogee profile] that are extruded aluminum.
 - Patterns are [Traditional] [Prairie] [Top Row] [New England] [Victorian].
 - Insulating glass contains non-glare spacer between the panes of glass.
 - Grilles are adhered to both sides of the insulating glass with VHB acrylic adhesive tape and aligned with the non-glare spacer.
- Grilles-Between-the-Glass₂
 - Insulating glass contains 3/4" contoured aluminum grilles permanently installed between two panes of glass.
 - Patterns are [Traditional] [9-Lite Prairie] [Cross] [Top Row]
 - Interior color is [White] [Tan₃] [Brown₃] [Putty₃] [Black] [Morning Sky Gray] [Ivory] [Sand Dune] [Harvest] [Cordovan] [Brickstone].
 - Exterior color₄ is [standard]₁.

Roomside Removable grilles

- [[3/4"] [1-1/4"] [2"] traditional] [[1-1/4"] [2"] colonial] profile, with [Traditional] [Prairie] patterns that are removable solid pine wood bars steel-pinned at joints and fitted to sash with steel clips and tacks.
- Interior [unfinished, ready for site finishing] [factory primed] [pine: factory prefinished [paint] [stain]₁].
- Exterior [unfinished, ready for site finishing] [factory primed] [finish color matched to exterior cladding₄].

Screens

- Integrated Rolscreen® (for rectangular units only)₆
 - Retractable screen integrated into [lower sash] [both upper and lower sash]. Screen rollers are fixed and concealed within the frame, screen is held to the sash by magnets which release when the bottom sash is tilted for cleaning, and when the upper sash is opened past 18°.
 - InView Screen cloth, black vinyl-coated 18/18 mesh fiberglass screen cloth complying with ASTM D 3656 and the performance requirements of SMA 1201.
- InView™ screens
 - [Half-Size] [Full-Size₄] black vinyl-coated 18/18 mesh fiberglass screen cloth complying with the performance requirements of SMA 1201, set in a [standard roll-form] [premium extruded] aluminum frame fitted to outside of window, supplied complete with all necessary hardware.
 - Full screen spreader bar placed on units > 37" width or > 65" height.
 - Screen frame finish is [standard screen: baked enamel] [premium extruded: [baked enamel] [anodized]], color to match window cladding.
- Vivid View® screens₇
 - [Half-Size] [Full-Size] PVDF 21 / 17 mesh, minimum 78 percent light transmissive screen, set in a [standard roll-form] [premium extruded] aluminum frame fitted to outside of window, supplied complete with all necessary hardware.
 - Full screen spreader bar placed on units > 37" width or > 65" height.
 - Screen frame finish is [standard screen: baked enamel] [premium extruded: [baked enamel] [anodized]], color to match window cladding.

Hardware

- Optional factory applied limited opening device available for vent units in stainless steel; nominal 3-3/4" opening. Limiting device concealed from view.
- Optional factory applied window opening control device. Device allows window to open less than 4" with normal operation, with a release mechanism that allows the sash to open completely. Complies with ASTM F2090-10.

Sensors

- Optional factory installed integrated security sensors available in vent units.



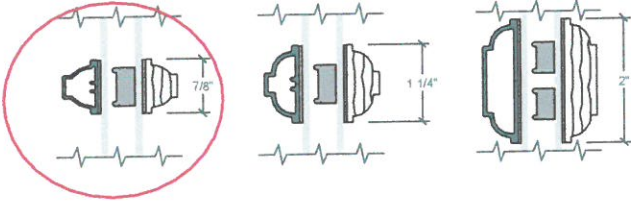
HUNG

GRILLE TYPES

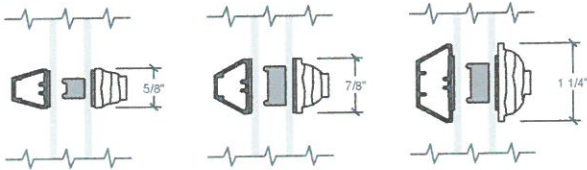
Typical Grille Profiles

Integral Light Technology® Grilles

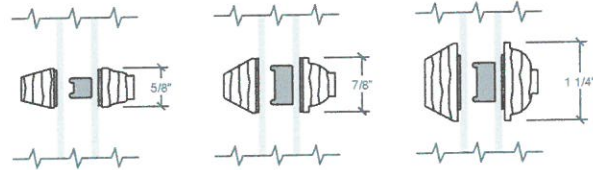
Ogee Grilles
Clad Exterior - Wood Interior



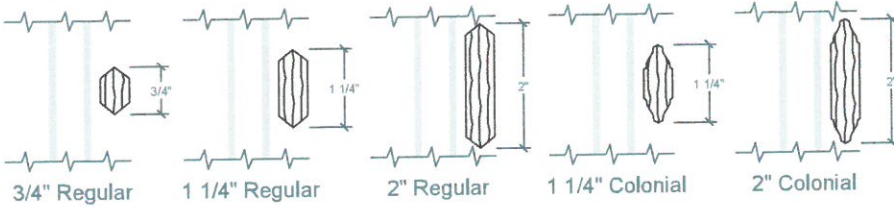
Putty Glaze and Ogee Grilles
Clad Exterior - Wood Interior



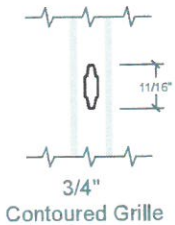
Putty Glaze and Ogee Grilles
Wood Exterior - Wood Interior



Roomside Removable Grilles



Grilles-Between-the-Glass



Interior wood ILT grilles available in Pine, Mahogany or Douglas Fir to match complete unit.
Exterior wood ILT grilles available in Pine or Mahogany to match complete unit.



HUNG

GLAZING PERFORMANCE - TOTAL UNIT

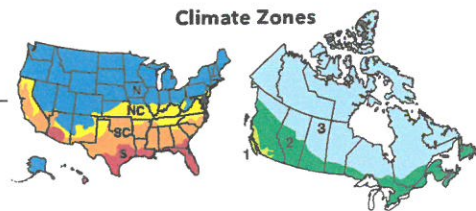
Aluminum-Clad Exterior

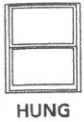


Glazing Thickness	Type of Glazing	NFRC Certified Product #	Glass (mm)		Gap Fill	Performance Values 1				Shaded Areas Meet ENERGY STAR® Performance Criteria in Zones Shown											
			Ext.	Int.		U-Factor	SHGC	VLT %	CR	U. S.		Canada 2									
										Zone	ER	Zone									
										N	NC	SC	S	1 2 3							
VENT																					
11/16"	Clear IG	PEL-N-232-00217-00001	2.5	2.5	air	0.46	0.59	0.62	44												
	with grilles-between-the-glass	PEL-N-232-00218-00001				0.46	0.53	0.55	44												
	with integral grilles	PEL-N-232-00219-00001				0.46	0.53	0.55	44												
11/16"	Clear IG	PEL-N-232-00221-00001	3	3	air	0.46	0.58	0.61	44												
	with grilles-between-the-glass	PEL-N-232-00222-00001				0.46	0.52	0.54	44												
	with integral grilles	PEL-N-232-00223-00001				0.46	0.52	0.54	44												
11/16"	Advanced Low-E IG	PEL-N-232-00253-00001	2.5	2.5	argon	0.29	0.28	0.53	60												
	with grilles-between-the-glass	PEL-N-232-00254-00001				0.29	0.25	0.47	60												
	with integral grilles	PEL-N-232-00255-00001				0.29	0.25	0.47	60												
11/16"	Advanced Low-E IG	PEL-N-232-00257-00001	3	3	argon	0.29	0.28	0.52	59												
	with grilles-between-the-glass	PEL-N-232-00258-00001				0.29	0.25	0.46	59												
	with integral grilles	PEL-N-232-00259-00001				0.29	0.25	0.46	59												
11/16"	SunDefense™ Low-E IG	PEL-N-232-00301-00001	2.5	2.5	argon	0.28	0.21	0.49	60								17				
	with grilles-between-the-glass	PEL-N-232-00302-00001				0.28	0.19	0.43	60								16				
	with integral grilles	PEL-N-232-00303-00001				0.29	0.19	0.43	60												
11/16"	SunDefense™ Low-E IG	PEL-N-232-00305-00001	3	3	argon	0.28	0.21	0.48	60								17				
	with grilles-between-the-glass	PEL-N-232-00306-00001				0.28	0.19	0.43	60								16				
	with integral grilles	PEL-N-232-00307-00001				0.29	0.19	0.43	60												
11/16"	AdvancedComfort Low-E IG	PEL-N-232-00277-00001	2.5	2.5	argon	0.25	0.27	0.51	49								24				
	with grilles-between-the-glass	PEL-N-232-00278-00001				0.25	0.25	0.46	49								23				
	with integral grilles	PEL-N-232-00279-00001				0.26	0.25	0.46	49								22				
11/16"	AdvancedComfort Low-E IG	PEL-N-232-00281-00001	3	3	argon	0.25	0.27	0.51	48								24				
	with grilles-between-the-glass	PEL-N-232-00282-00001				0.25	0.25	0.45	48								23				
	with integral grilles	PEL-N-232-00283-00001				0.26	0.25	0.45	48								22				
11/16"	NaturalSun Low-E IG	PEL-N-232-00229-00001	2.5	2.5	argon	0.30	0.52	0.60	60								32				
	with grilles-between-the-glass	PEL-N-232-00230-00001				0.30	0.47	0.53	60								30				
	with integral grilles	PEL-N-232-00231-00001				0.30	0.47	0.53	60								30				
11/16"	NaturalSun Low-E IG	PEL-N-232-00233-00001	3	3	argon	0.30	0.51	0.59	59								32				
	with grilles-between-the-glass	PEL-N-232-00234-00001				0.30	0.46	0.52	59								29				
	with integral grilles	PEL-N-232-00235-00001				0.30	0.46	0.52	59								29				
TINTED GLAZING																					
11/16"	Bronze Advanced Low-E IG	PEL-N-232-00325-00001	5	3	argon	0.29	0.25	0.34	48												
	with grilles-between-the-glass	PEL-N-232-00326-00001				0.31	0.22	0.30	48												
	with integral grilles	PEL-N-232-00327-00001				0.30	0.22	0.30	48												
11/16"	Gray Advanced Low-E IG	PEL-N-232-00333-00001	5	3	argon	0.29	0.23	0.29	58												
	with grilles-between-the-glass	PEL-N-232-00334-00001				0.31	0.21	0.26	58												
	with integral grilles	PEL-N-232-00335-00001				0.30	0.21	0.26	58												
11/16"	Green Advanced Low-E IG	PEL-N-232-00341-00001	5	3	argon	0.29	0.28	0.46	58												
	with grilles-between-the-glass	PEL-N-232-00342-00001				0.31	0.25	0.25	58												
	with integral grilles	PEL-N-179-01227-00001				0.31	0.26	0.41	58												

R-Value = 1/U-Factor
 SHGC = Solar Heat Gain Coefficient
 VLT % = Visible Light Transmission
 CR = Condensation Resistance
 ER = Canadian Energy Rating

(1) Glazing performance values are calculated for Pine using NFRC 100, NFRC 200 and NFRC 500. Thermal performance of other wood species may vary. ENERGY STAR® values are updated to 2016 (Version 6) criteria.
 (2) The values shown are based on Canada's updated ENERGY STAR® 2015 initiative.
 See the Product Performance section for more detailed information or visit www.energystar.gov for Energy Star guidelines.
 Non Rectangular Unit thermal values will vary slightly.





PRODUCT SELECTION GUIDE
 Size and Performance Data
 Sound Transmission Class - OITC



AIR/WATER/STRUCTURAL PERFORMANCE

Meets or Exceeds AAMA/WDMA Ratings	H-CW30-CW50 Hallmark Certified
Air Infiltration (cfm/ft ² of frame @ 1.57 psf wind pressure) ²	0.11
Water Resistance	4.6-7.5 psf
Design Pressure	30-50 psf

OTHER PERFORMANCE CRITERIA

Forced Entry Resistance Level (Minimum Security Grade) ³	10
Operating Force (lb) Initiate Motion / Maintain Motion (of Hallmark tested size and glazing) ⁴	40/45

SOUND TRANSMISSION CLASS / OUTDOOR-INDOOR TRANSMISSION CLASS

Product	Frame Size Tested ⁵	Glazing System				STC Rating	OITC Rating
		Overall Glazing Thickness	Exterior Glass Thickness	Interior Glass Thickness	Third Pane Thickness		
ARCHITECT SERIES RESERVE CLAD DOUBLE-HUNG WINDOW	WITH INTEGRAL GRILLES						
	45" x 65"	1 1/16"	2.5mm	2.5mm	–	29	26
	45" x 65"	1 1/16"	3mm	5mm	–	34	30
	45" x 65"	1 1/16"	3mm	6mm Laminated	–	35	30
	WITH REMOVABLE OR NO GRILLES						
	45" x 65"	1 1/16"	2.5mm	2.5mm	–	28	24
	45" x 65"	1 1/16"	3mm	5mm	–	32	28
	45" x 65"	1 1/16"	3mm	6mm Laminated	–	33	28

(–) = Not Available

- (1) Maximum performance for single unit when glazed with the appropriate glass thickness. See Design Data pages in this section for specific product performance class and grade values.
- (2) Published performance data for air infiltration is determined by testing a minimum of four (4) products of NFRC model size. Testing is conducted in accordance with ASTM E283. Air infiltration ratings for products will differ by size. The performance data does not apply to combination assemblies unless noted. Actual product performance may vary for a number of reasons including installation and product care.
- (3) The higher the level, the greater the product's ability to resist forced entry.
- (4) Glazing configurations may result in higher operational forces
- (5) ASTM E 1425 defines standard sizes for acoustical testing. Ratings achieved at that size are representative of all sizes of the same configuration.



EXISTING EXTERIOR AND
DETAILS

56 Salter Street

RECEIVED
NOV 14 2018

Salter Street Facade – No changes



Side Elevations



EXISTING STREET FACADE, SIDE AND REAR



56 Salter Street



56 Salter Street

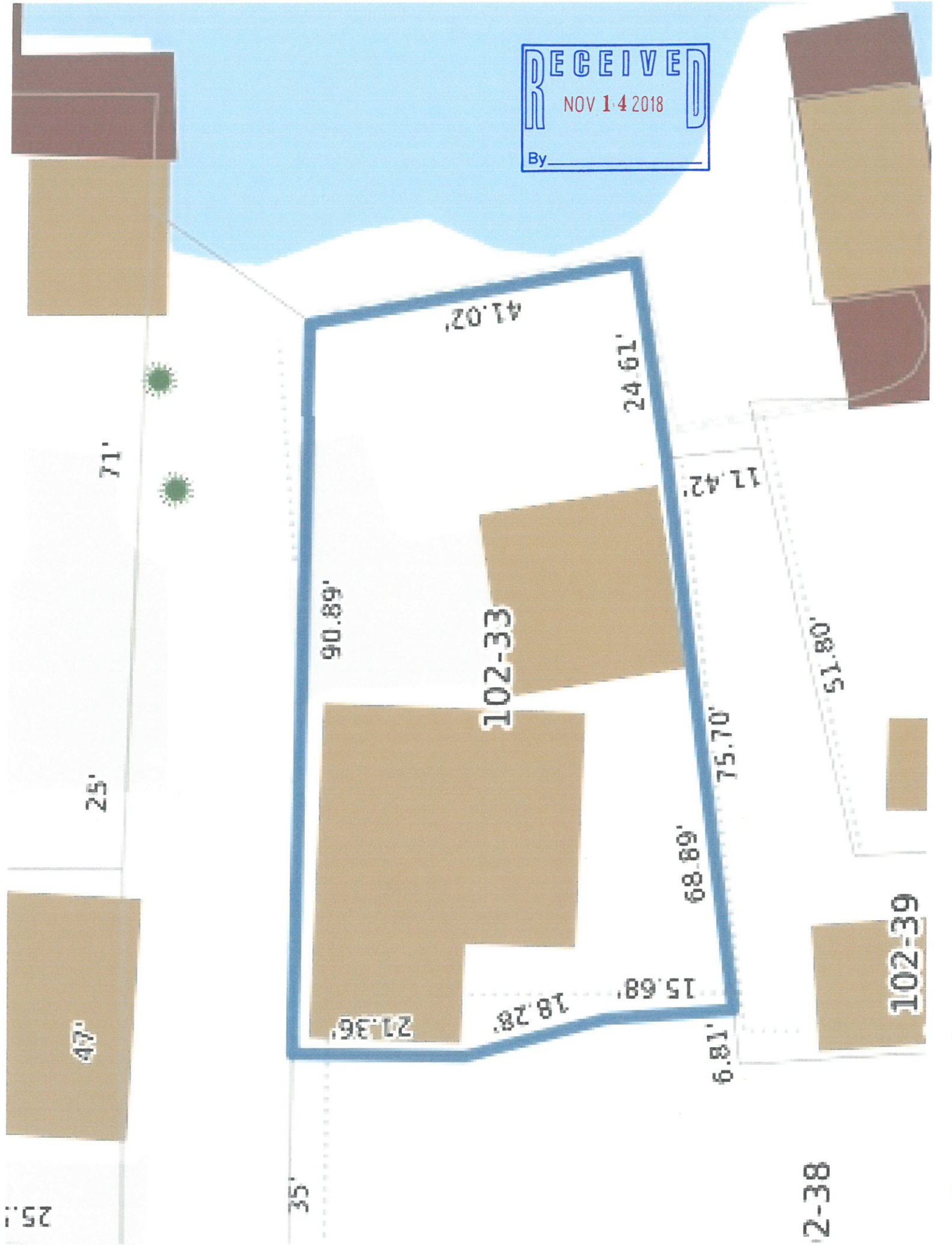
EXISTING SIDE AND REAR

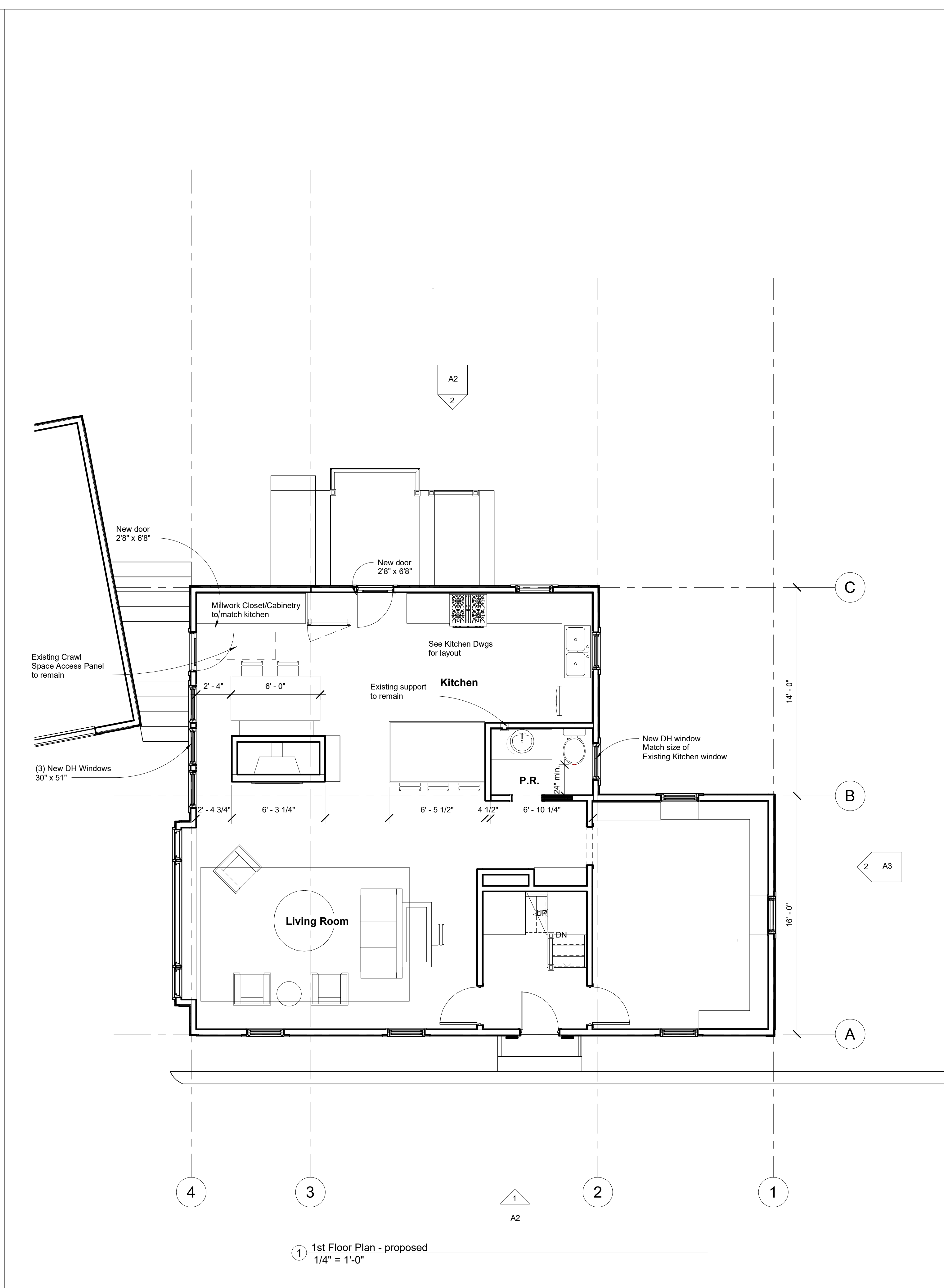
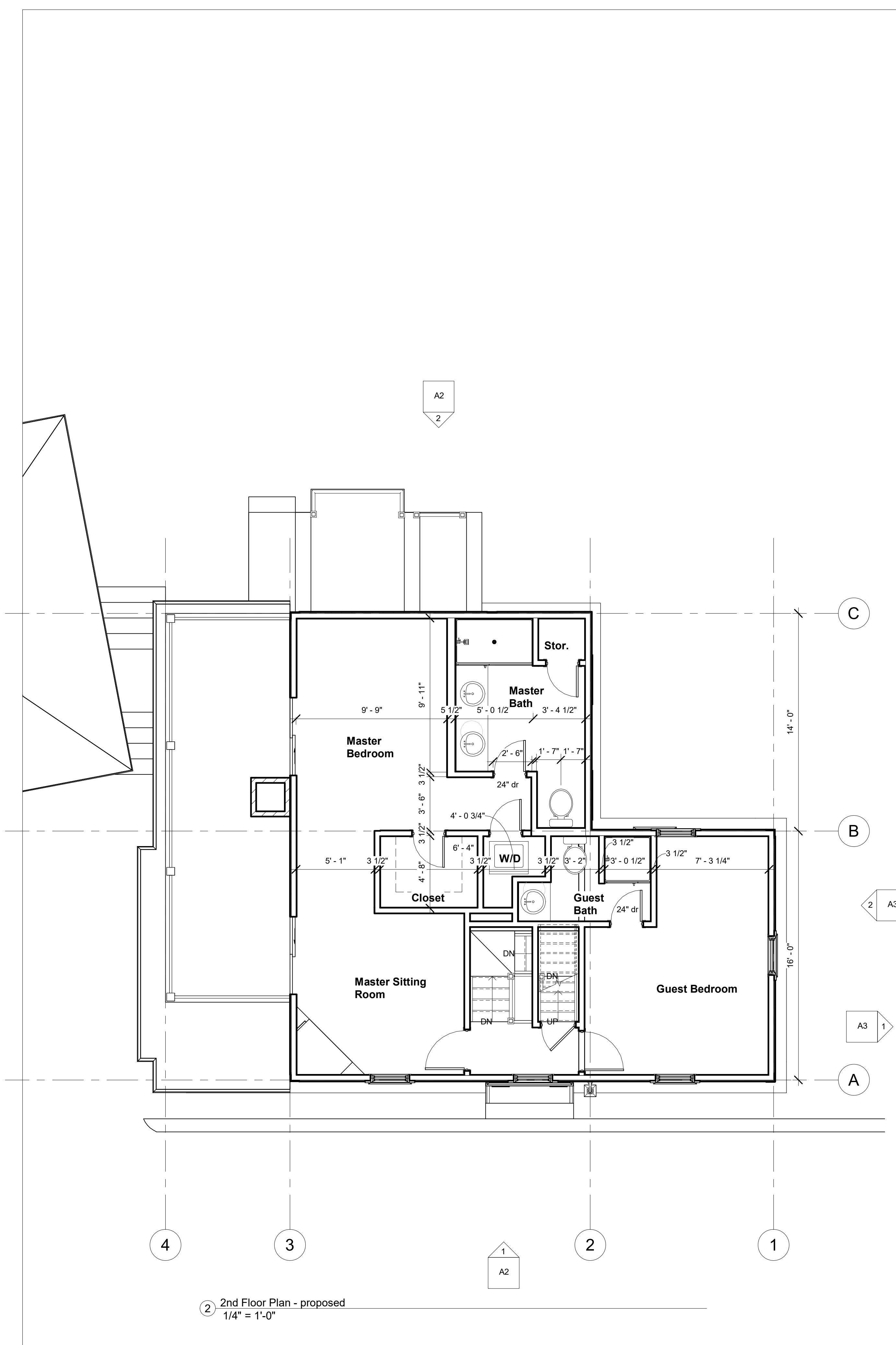


56 Salter Street

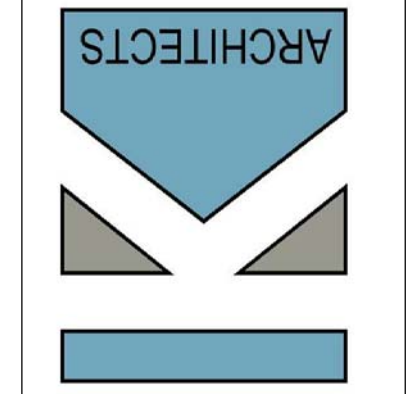
EXISTING STREETSCAPE

RECEIVED
NOV 14 2018
By _____





KW Architects
Kristi Kenney, RA
PO Box 404
Wells, Maine 04090
(207) 332-9199



56 Salter Street
Portsmouth, NH

REVISIONS		
#	Date	Description

Date:	11-6-18
Project #	180906
Drawn By:	AEP
Checked By:	KK
Drawing Scale	1/4" = 1'-0"

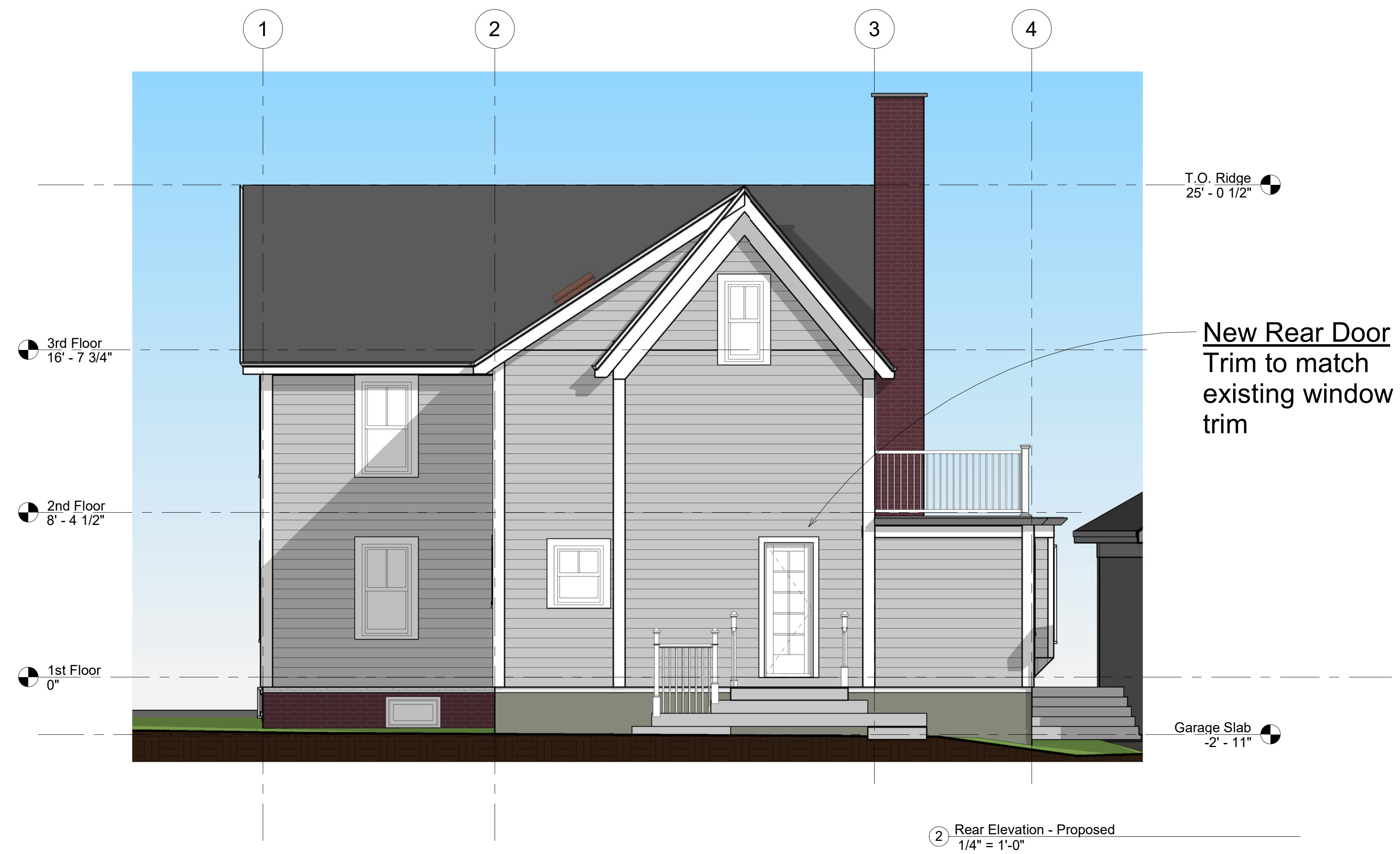
SHEET TITLE
Proposed 1st and 2nd Floor Plan

AI

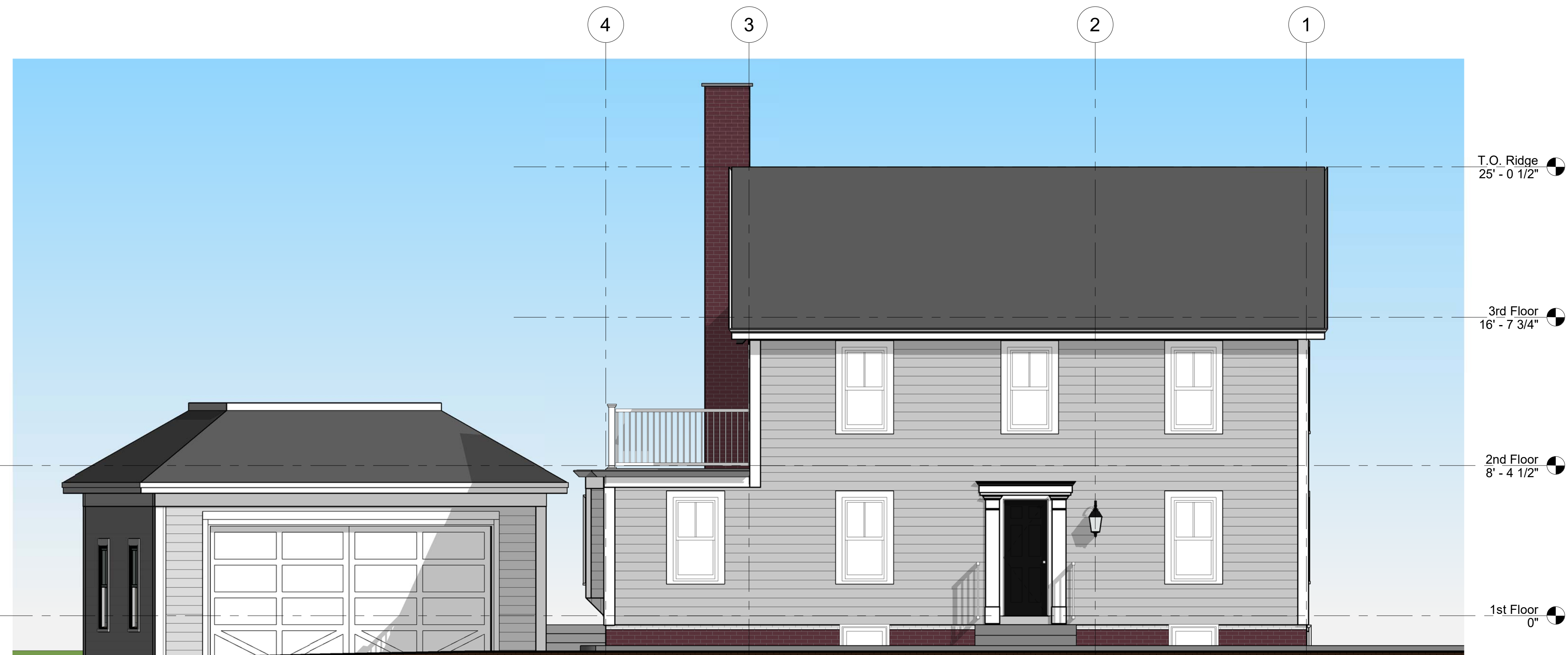
© COPYRIGHT 2018
Reproduction or Release of this Document Without Written Permission of KW Architects is Prohibited

HDC Submittal

11/6/2018 8:30:29 AM AEP

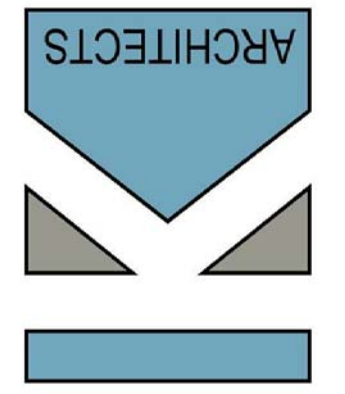


② Rear Elevation - Proposed
1/4" = 1'-0"



① Front Elevation - Salter Street
1/4" = 1'-0"

KW Architects
Kristi Kenney, RA
PO Box 404
Wells, Maine 04090
(207) 332-9199



56 Salter Street
Portsmouth, NH

REVISIONS		
#	Date	Description

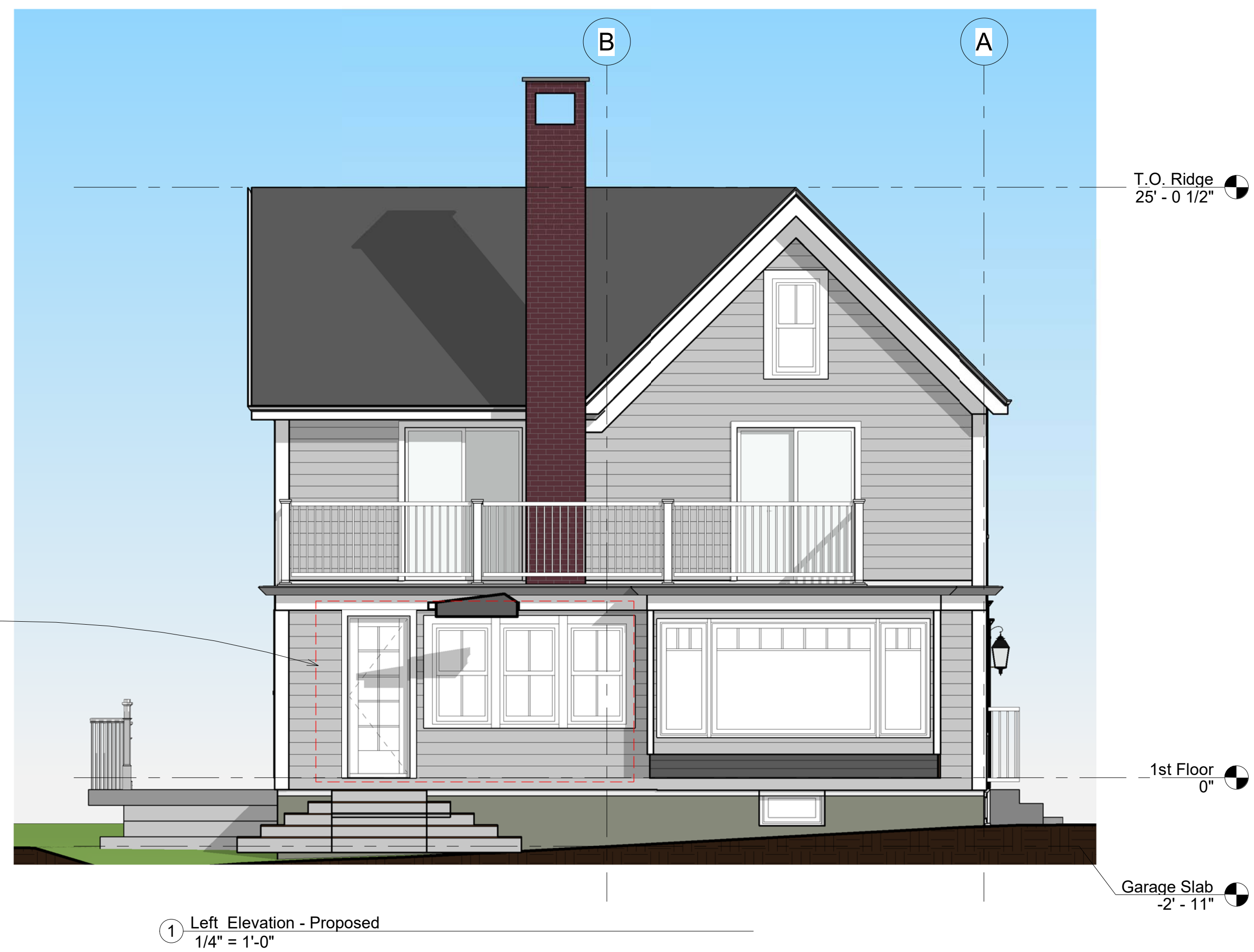
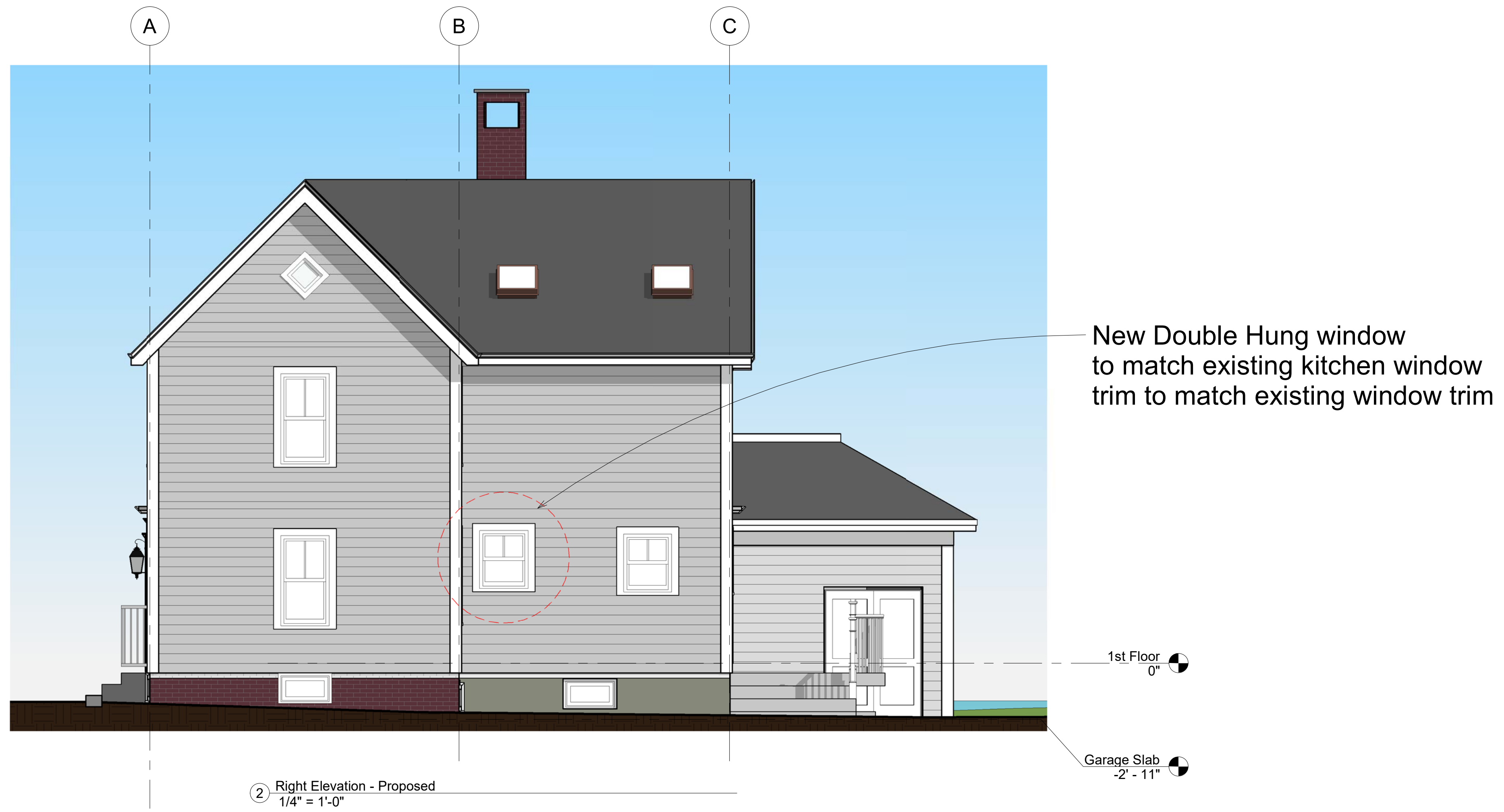
Date:	11-6-18
Project #	180906
Drawn By:	AEP
Checked By:	KK
Drawing Scale	1/4" = 1'-0"

SHEET TITLE
Proposed Elevations

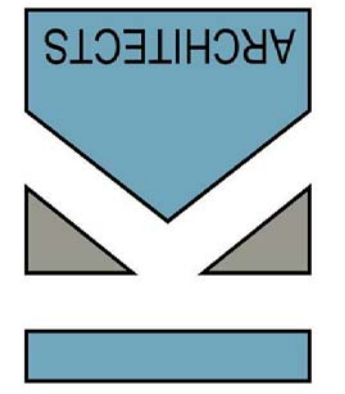
A2

© COPYRIGHT 2018
Reproduction or Release of this Document Without
Written Permission of KW Architects is Prohibited

HDC Submittal



KW Architects
 Kristi Kenney, RA
 PO Box 404
 Wells, Maine 04090
 (207) 332-9199



56 Salter Street
 Portsmouth, NH

REVISIONS		
#	Date	Description

Date:	11-6-18
Project #	180906
Drawn By:	AEP
Checked By:	KK
Drawing Scale	1/4" = 1'-0"

SHEET TITLE
 Proposed Elevations

A3

© COPYRIGHT 2018
 Reproduction or Release of this Document Without
 Written Permission of KW Architects is Prohibited

HDC Submittal

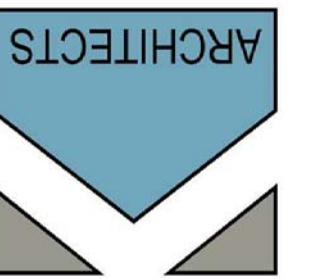


② 3D View - Rear



① 3D View - Front

KW Architects
 Kristi Kenney, RA
 PO Box 404
 Wells, Maine 04090
 (207) 332-9199



56 Salter Street
 Portsmouth, NH

REVISIONS

#	Date	Description

Date:	11-6-18
Project #	180906
Drawn By:	AEP
Checked By:	KK
Drawing Scale	

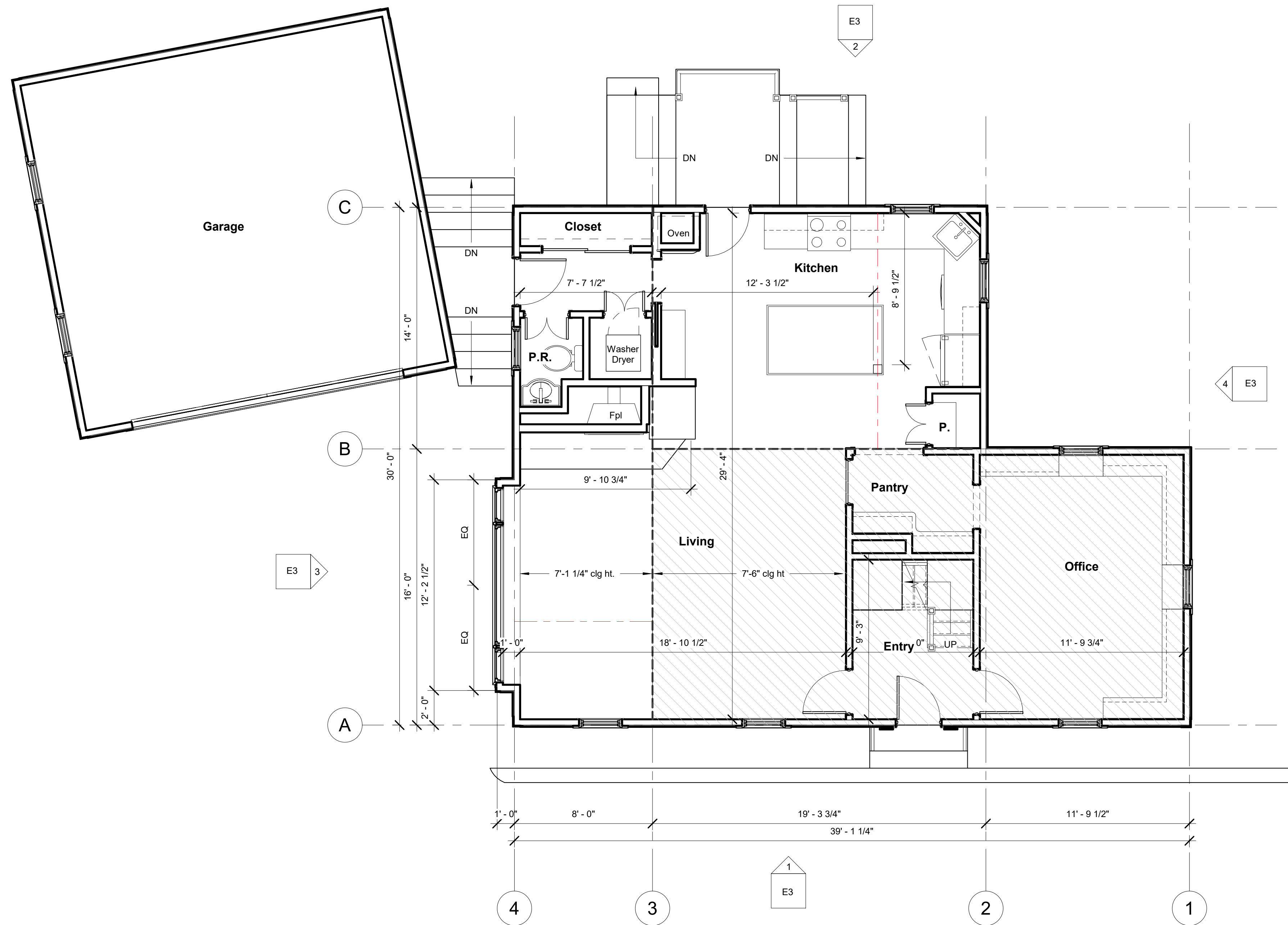
SHEET TITLE

3D Views

RI

© COPYRIGHT 2018
 Reproduction or Release of this Document Without
 Written Permission of KW Architects is Prohibited

HDC Submittal



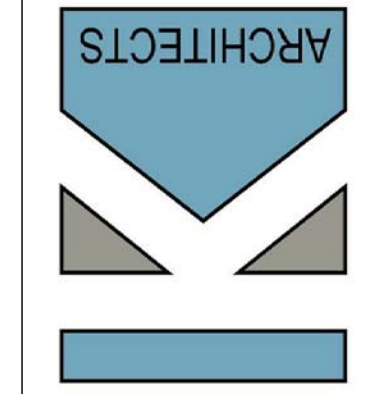
① 1st Floor Plan - existing
1/4" = 1'-0"



② Existing Conditions Photos
1/16" = 1'-0"



KW Architects
Kristi Kenney, RA
PO Box 404
Wells, Maine 04090
(207) 332-9199



56 Salter Street
Portsmouth, NH

REVISIONS

#	Date	Description

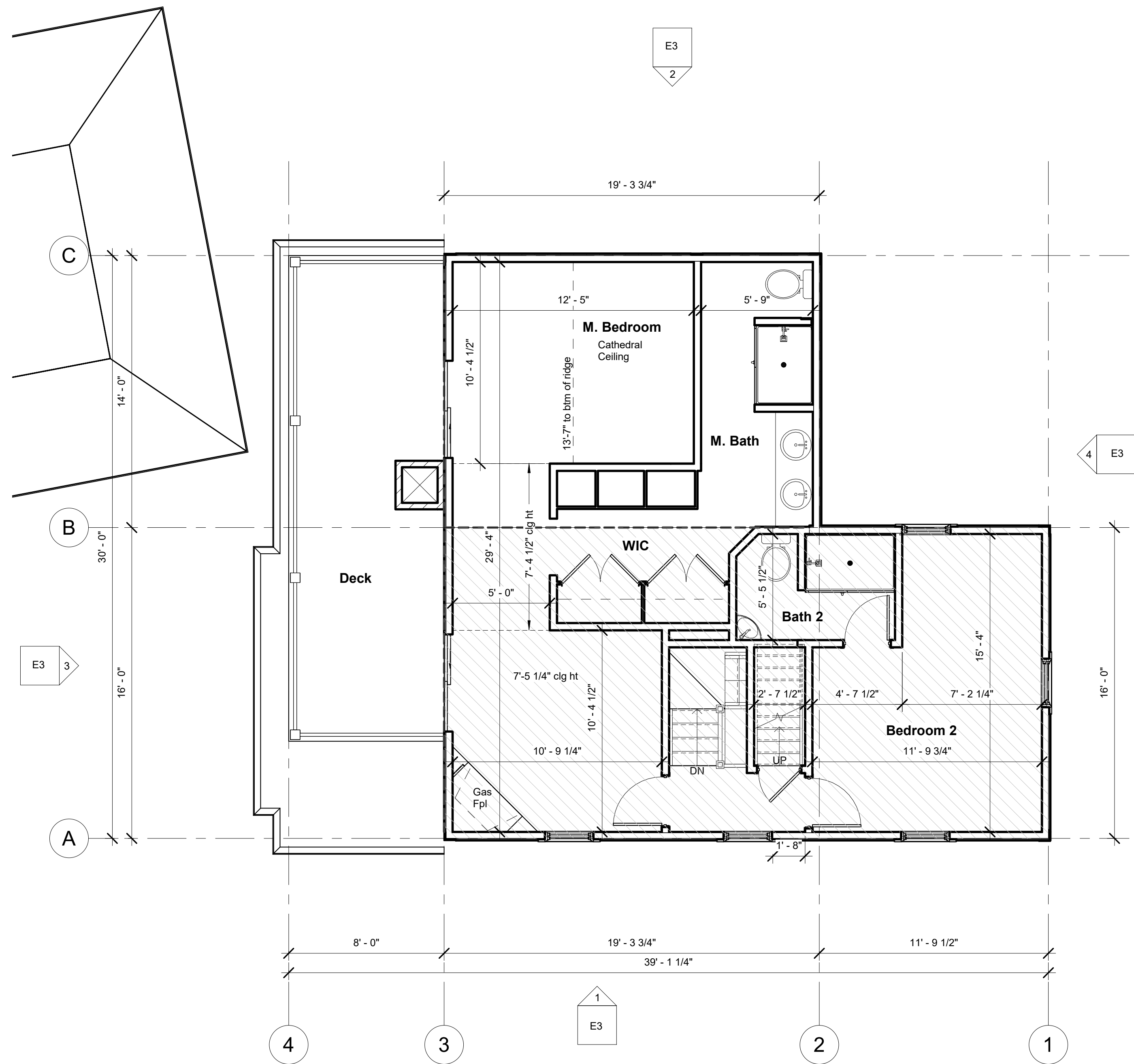
Date:	10/17/18
Project #	180906
Drawn By:	AEP
Checked By:	KK
Drawing Scale	As indicated

SHEET TITLE

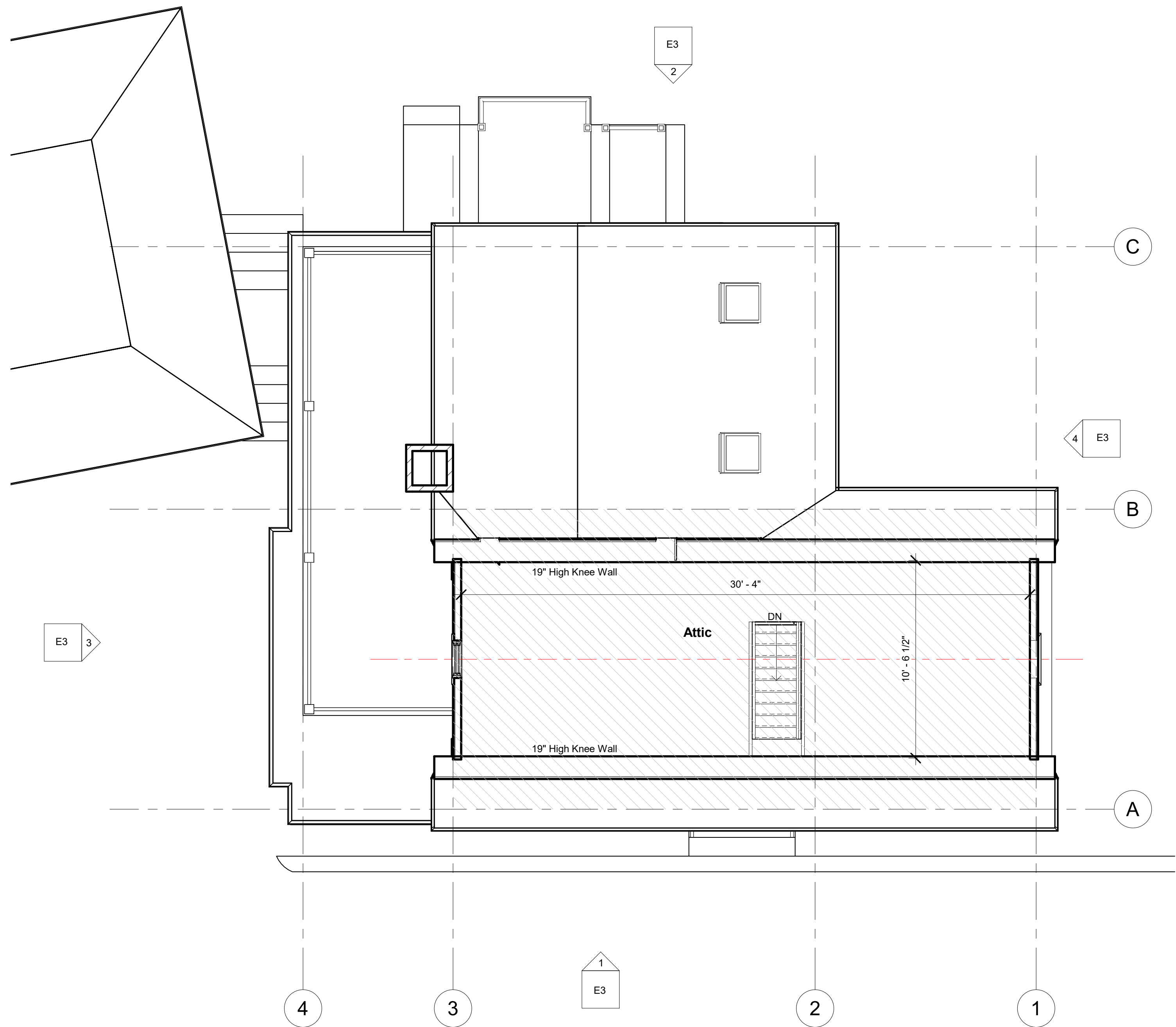
Existing 1st Floor Plan

EI

Existing Conditions

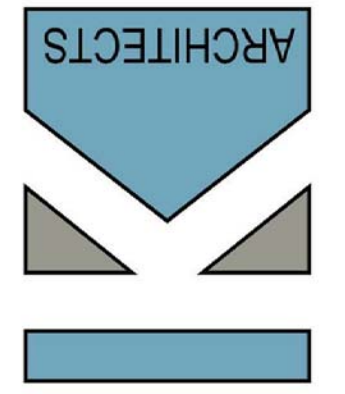


② 2nd Floor Plan - existing
1/4" = 1'-0"



① 3rd Floor - existing
1/4" = 1'-0"

KW Architects
Kristi Kenney, RA
PO Box 404
Wells, Maine 04090
(207) 332-9199



56 Salter Street
Portsmouth, NH

REVISIONS

#	Date	Description

Date:	10/17/18
Project #	180906
Drawn By:	AEP
Checked By:	KK
Drawing Scale	1/4" = 1'-0"

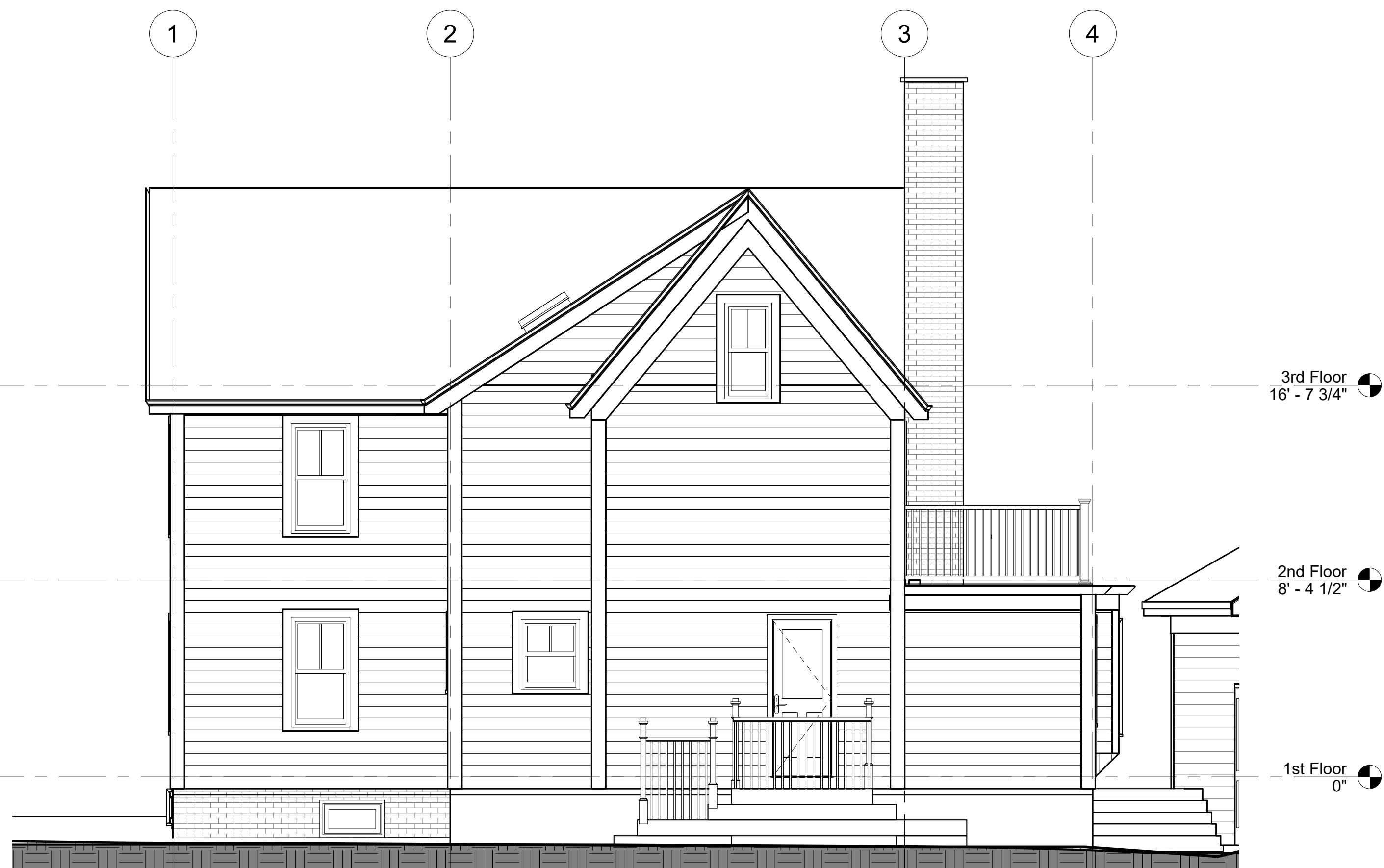
SHEET TITLE

Existing 2nd and 3rd Floor Plans

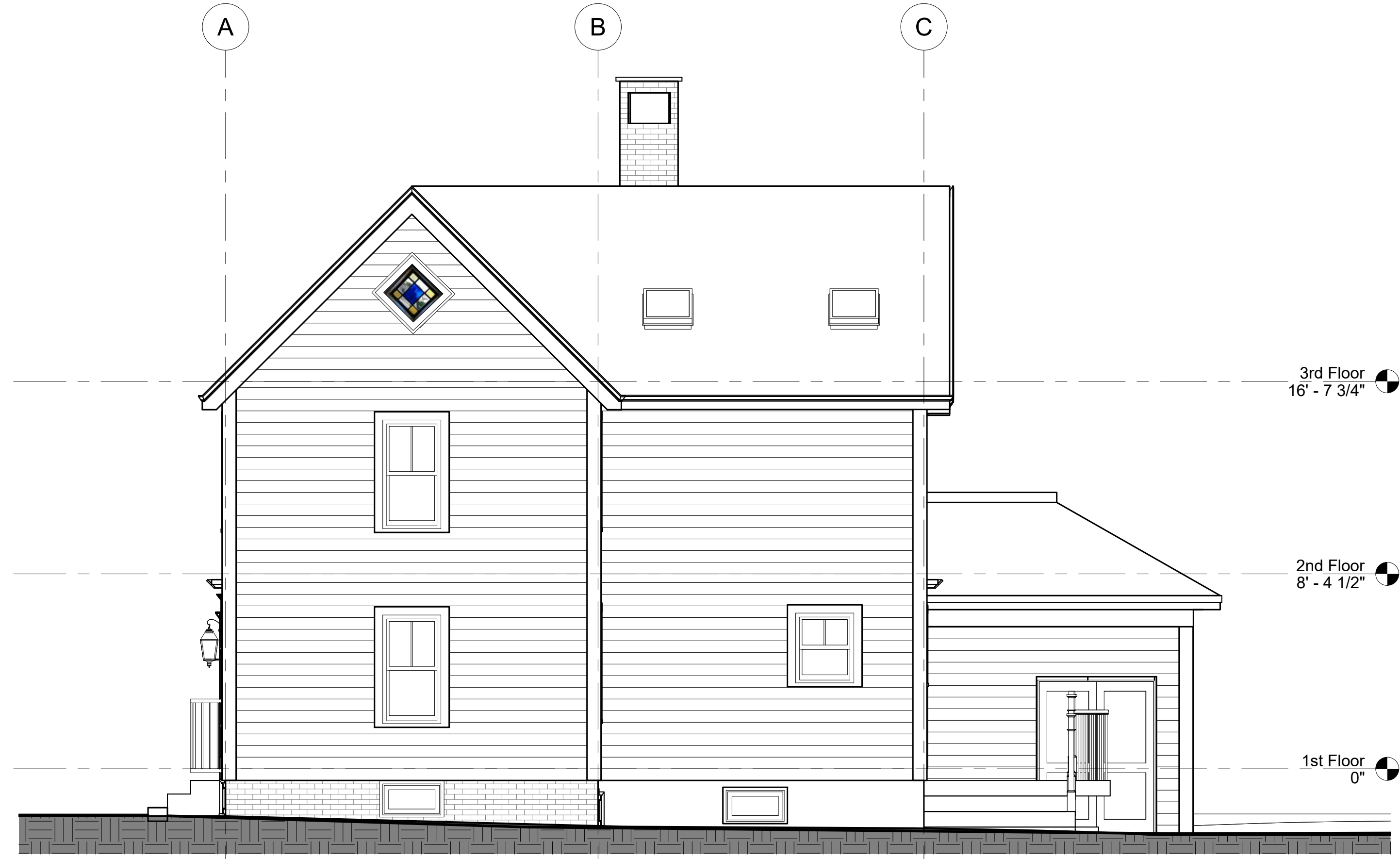
E2

© COPYRIGHT 2018
Reproduction or Release of this Document Without
Written Permission of KW Architects is Prohibited

Existing Conditions



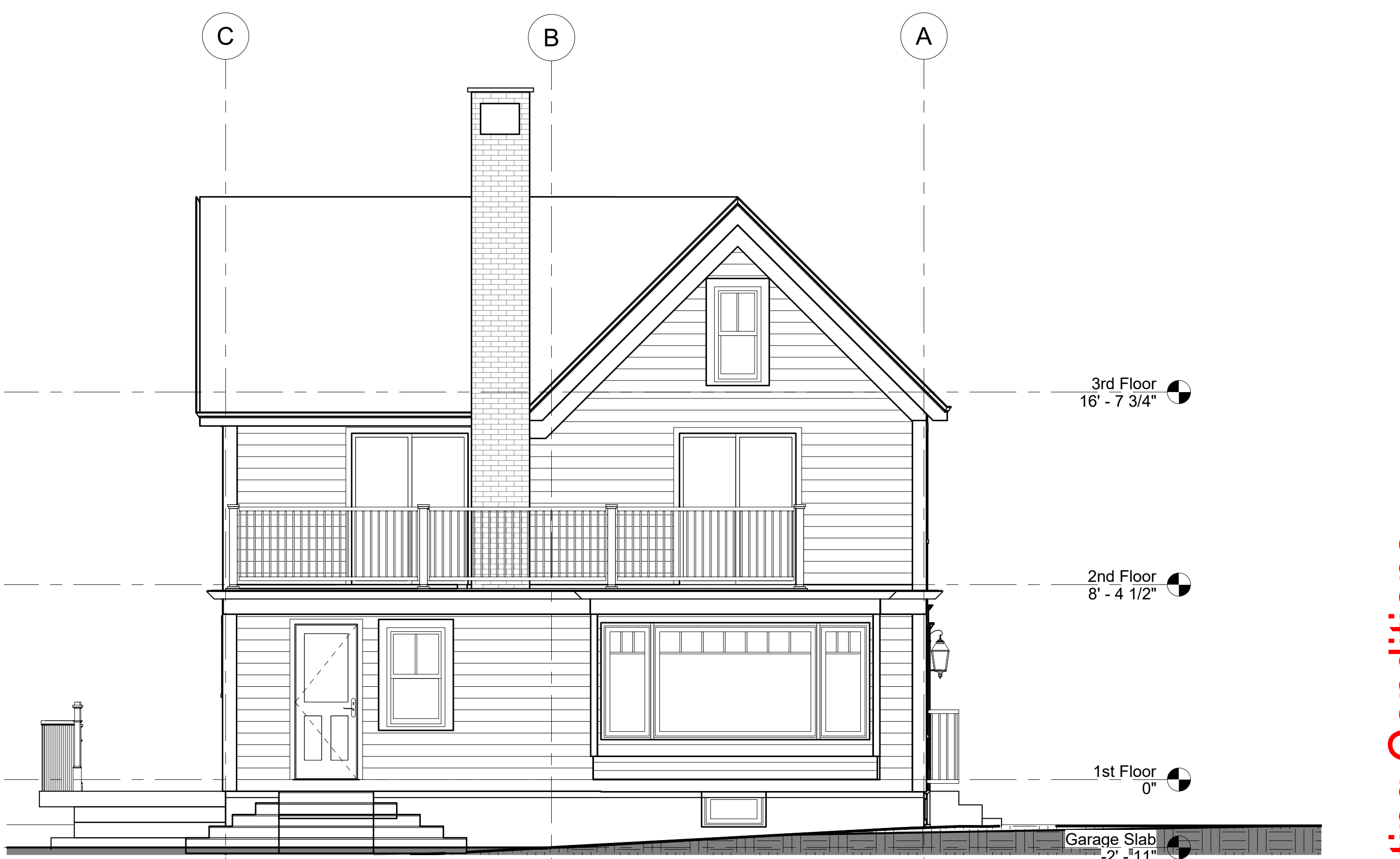
② Rear Elevation - existing
1/4" = 1'-0"



④ Right Elevation - existing
1/4" = 1'-0"

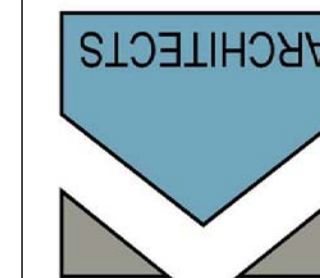


① Front Elevation - existing
1/4" = 1'-0"



③ Left Elevation - existing
1/4" = 1'-0"

KW Architects
Kristi Kenney, RA
PO Box 404
Wells, Maine 04090
(207) 332-9199



56 Salter Street
Portsmouth, NH

REVISIONS

#	Date	Description

Date:	10/17/18
Project #	180906
Drawn By:	AEP
Checked By:	KK
Drawing Scale	As indicated

SHEET TITLE

Existing Elevations

E3

© COPYRIGHT 2018
Reproduction or Release of this Document Without
Written Permission of KW Architects is Prohibited

Existing Conditions