

# 93 PLEASANT STREET



HDC DRAWING SHEET LIST	
P1.1	COVER SHEET
P1.2	PROPOSED FIRST FLOOR PLAN
P1.3	PROPOSED ROOF PLAN
P1.4	CONTEXT VIEW FROM PLEASANT
P1.5	CONTEXT VIEW FROM COURT ST - N
P1.6	CONTEXT VIEW FROM COURT ST - S
P1.7	CONTEXT VIEW FROM STATE ST
P1.8	PERSPECTIVE VIEW - SW
P1.9	PERSPECTIVE VIEW - SE
P1.10	ELEVATION - FRONT
P1.11	ELEVATION - SIDE
P1.12	ELEVATION - REAR
P1.13	PARTIAL EXTERIOR ELEVATIONS
P1.14	PARTIAL EXTERIOR ELEVATIONS
P1.15	PARTIAL EXTERIOR ELEVATIONS
P1.16	PARTIAL EXTERIOR ELEVATIONS
P1.17	PARTIAL EXTERIOR ELEVATIONS
P1.18	PARTIAL EXTERIOR ELEVATIONS
P1.19	MATERIALS

SUMMARY

NEW CONSTRUCTION

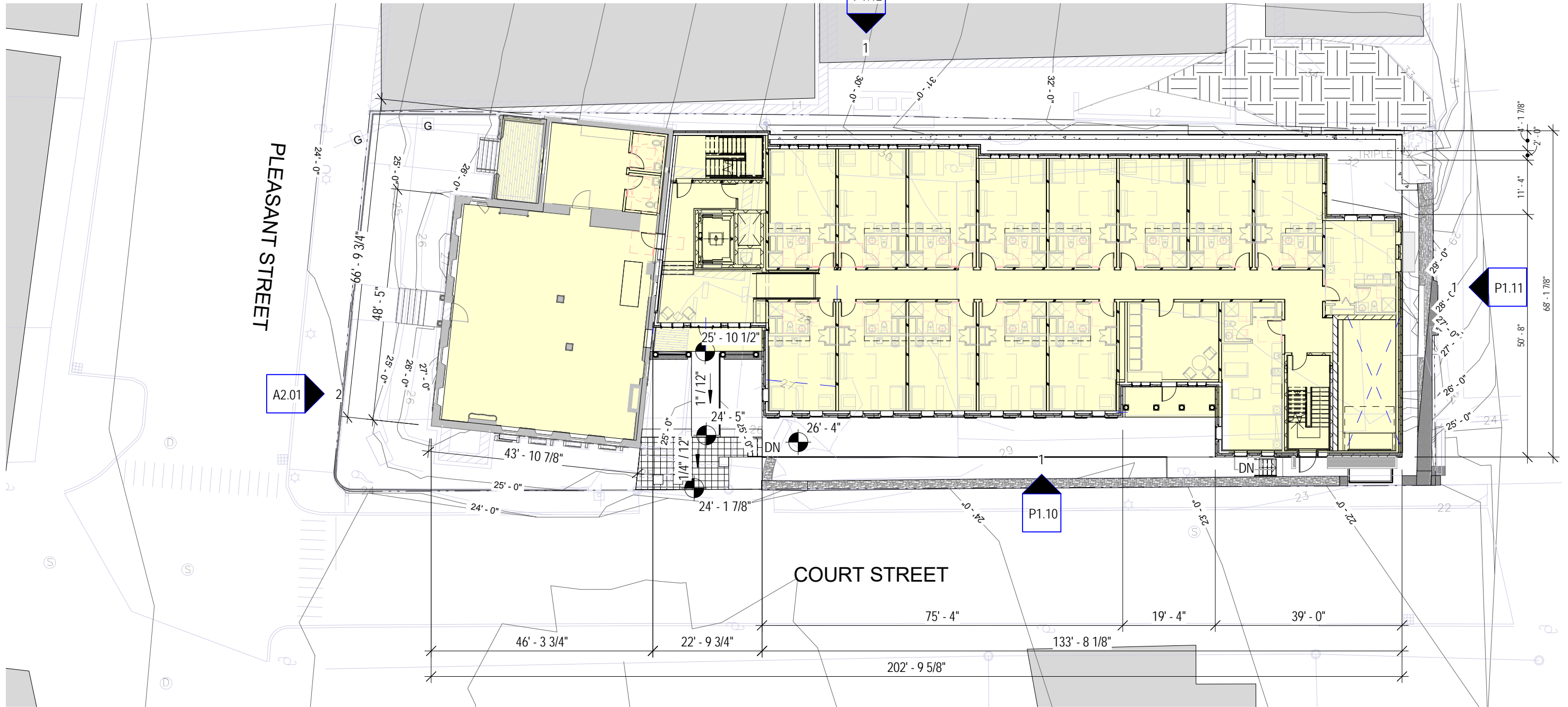
MULTI-FAMILY HOUSING APARTMENTS, NEW STRUCTURE LOCATED IN PARKING LOT BEHIND TREADWELL-JENNESS HOUSE.  
2 STORIES + 3RD SHORT STORY; 1 LEVEL UNDERGROUND PARKING.

P1.1

COVER SHEET

93 PLEASANT STREET  
HDC WORK SESSION 5 - AUGUST 23, 2021





1 HDC PROPOSED FIRST FLOOR PLAN  
3/64" = 1'-0"

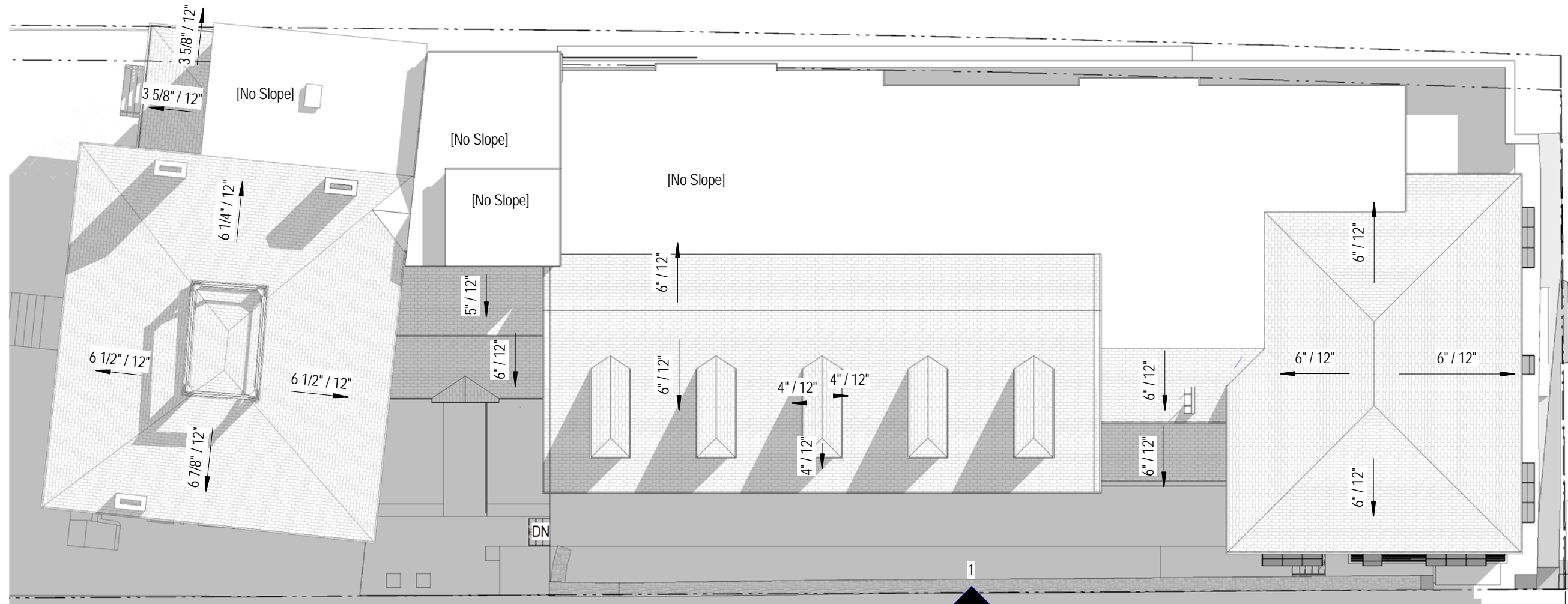
P1.2

## PROPOSED FIRST FLOOR PLAN

93 PLEASANT STREET  
HDCws 5 August 25, 2021

P1.12

1



1

P1.11

P1.10

1

# HDC PROPOSED ROOF PLAN

1/16" = 1'-0"

GRAPHIC SCALE: 1/16" = 1'-0"



P1.3

## PROPOSED ROOF PLAN

93 PLEASANT STREET  
HDCws 5 August 25, 2021

JSA

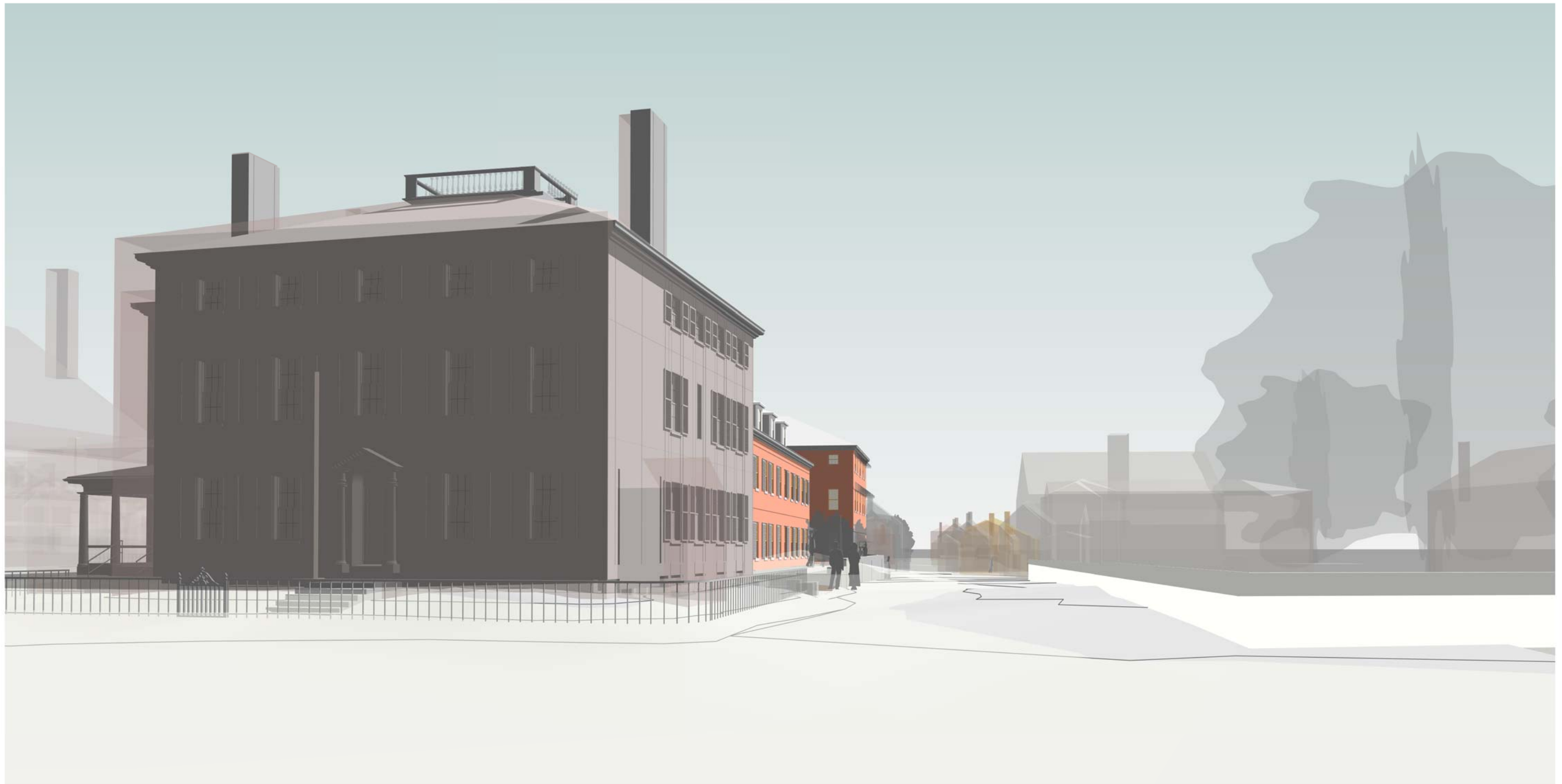
ARCHITECTS  
INTERIORS  
PLANNERS



P1.4

CONTEXT VIEW FROM PLEASANT

93 PLEASANT STREET  
HDC WORK SESSION 5 - AUGUST 23, 2021



P1.5

CONTEXT VIEW FROM COURT ST - N

93 PLEASANT STREET  
HDC WORK SESSION 5 - AUGUST 23, 2021



P1.6

CONTEXT VIEW FROM COURT ST - S

93 PLEASANT STREET  
HDC WORK SESSION 5 - AUGUST 23, 2021





P1.7

CONTEXT VIEW FROM STATE ST

93 PLEASANT STREET  
HDC WORK SESSION 5 - AUGUST 23, 2021



P1.8

PERSPECTIVE VIEW - SW

93 PLEASANT STREET  
HDC WORK SESSION 5 - AUGUST 23, 2021



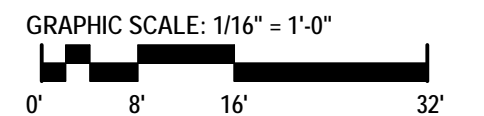
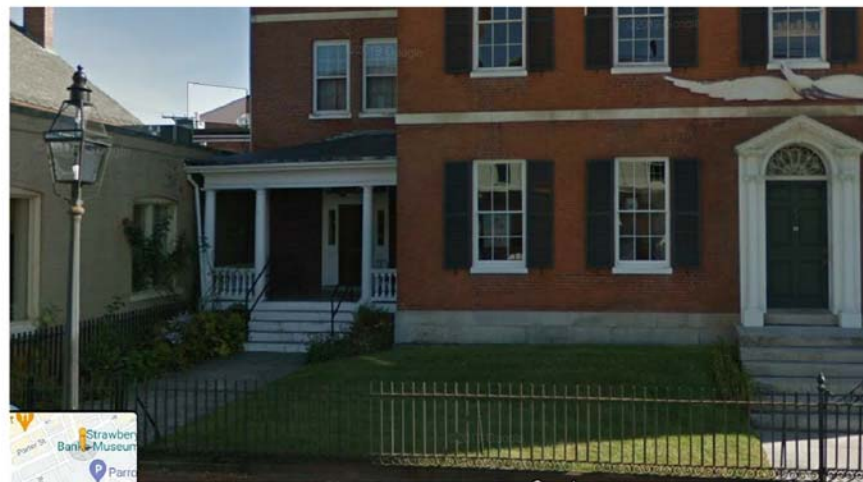
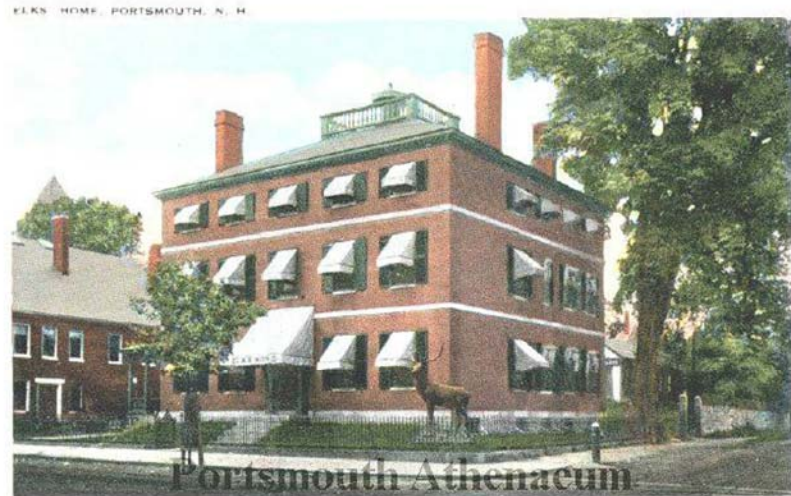
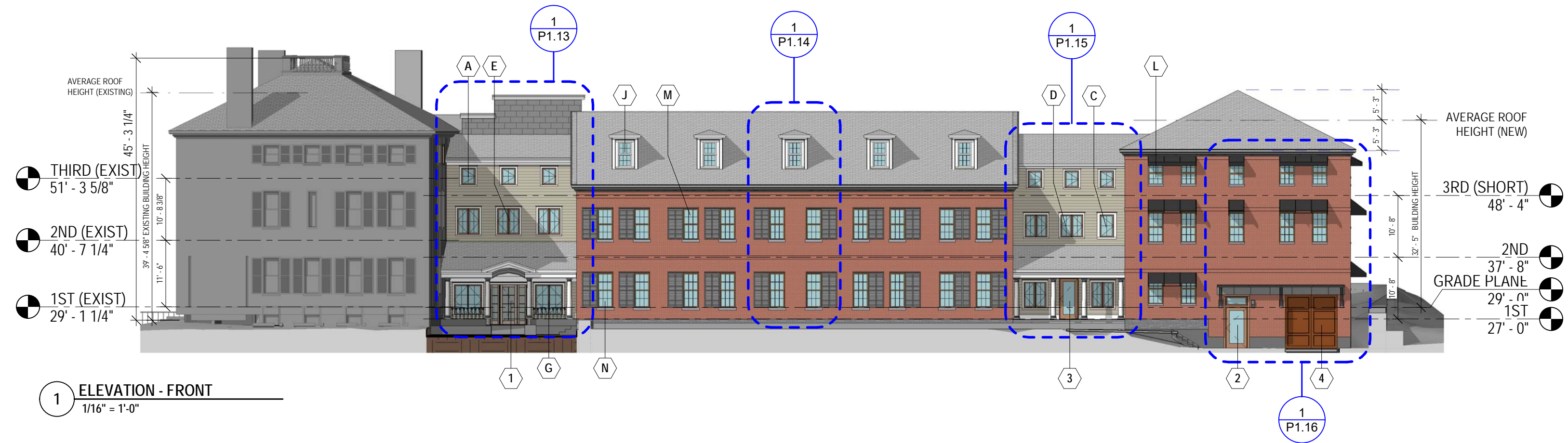


P1.9

PERSPECTIVE VIEW - SE

93 PLEASANT STREET  
HDC WORK SESSION 5 - AUGUST 23, 2021

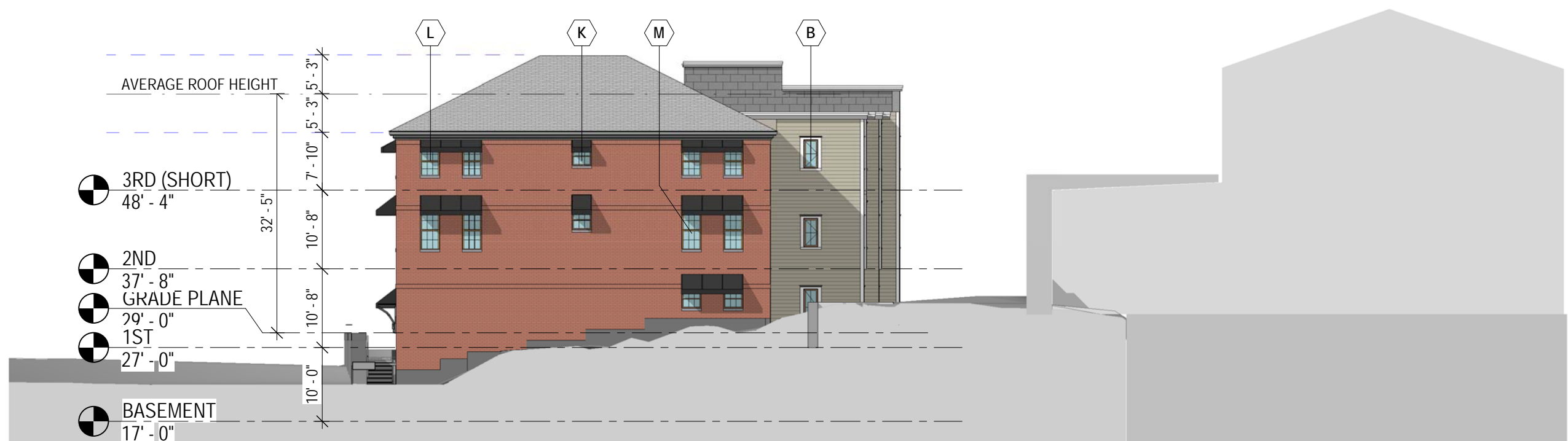




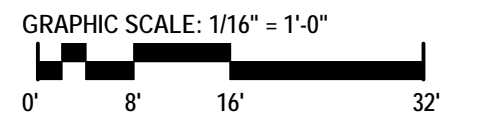
**P1.10**

**ELEVATION - FRONT**

93 PLEASANT STREET  
HDCws 5 August 25, 2021



1 HDC ELEVATION - SIDE  
1/16" = 1'-0"



P1.11

ELEVATION - SIDE  
93 PLEASANT STREET  
HDCws 5 August 25, 2021



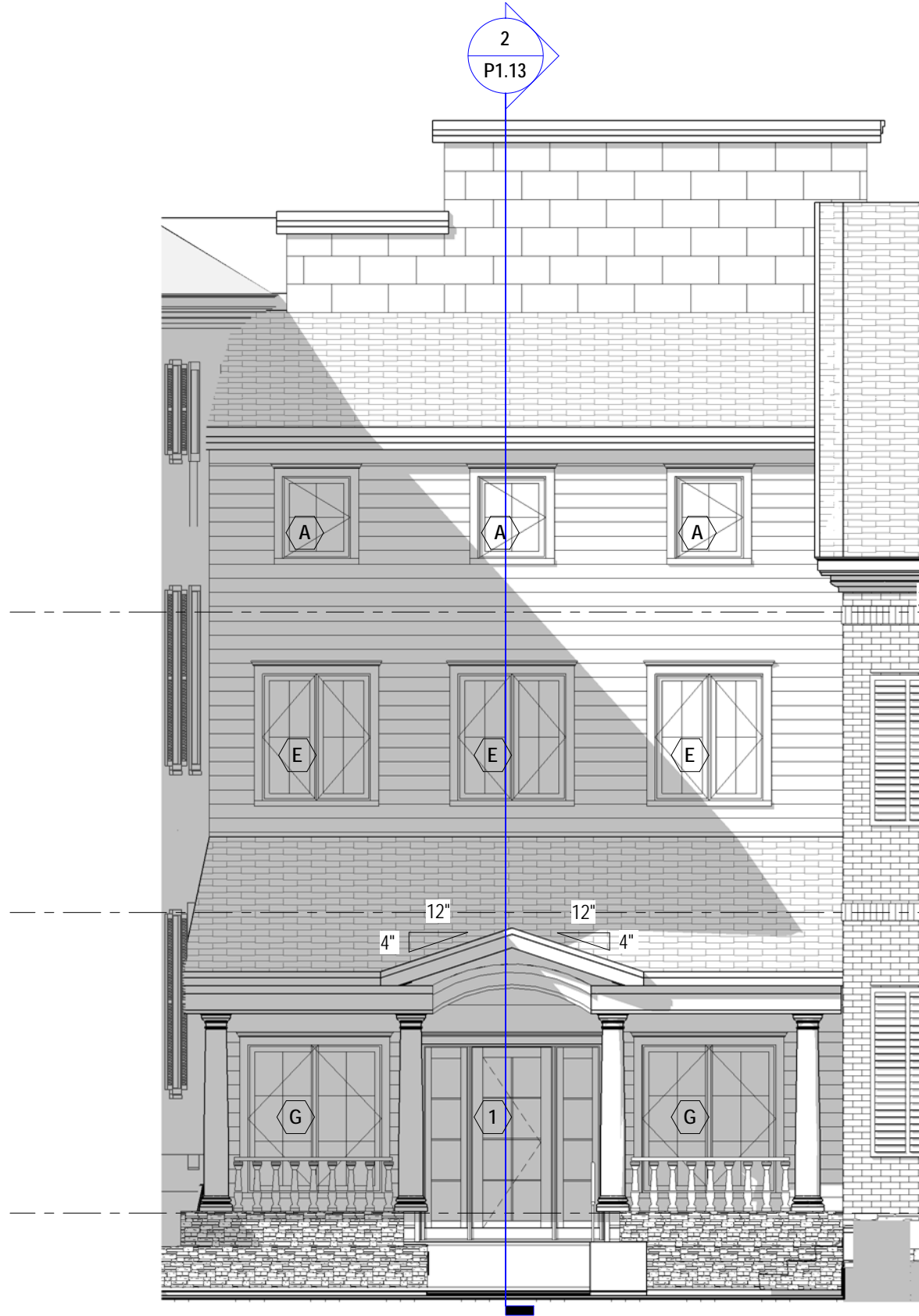


1 HDC ELEVATION - REAR  
1/16" = 1'-0"

P1.12

## ELEVATION - REAR

93 PLEASANT STREET  
HDCws 5 August 25, 2021



3RD (SHORT)  
48' - 4"

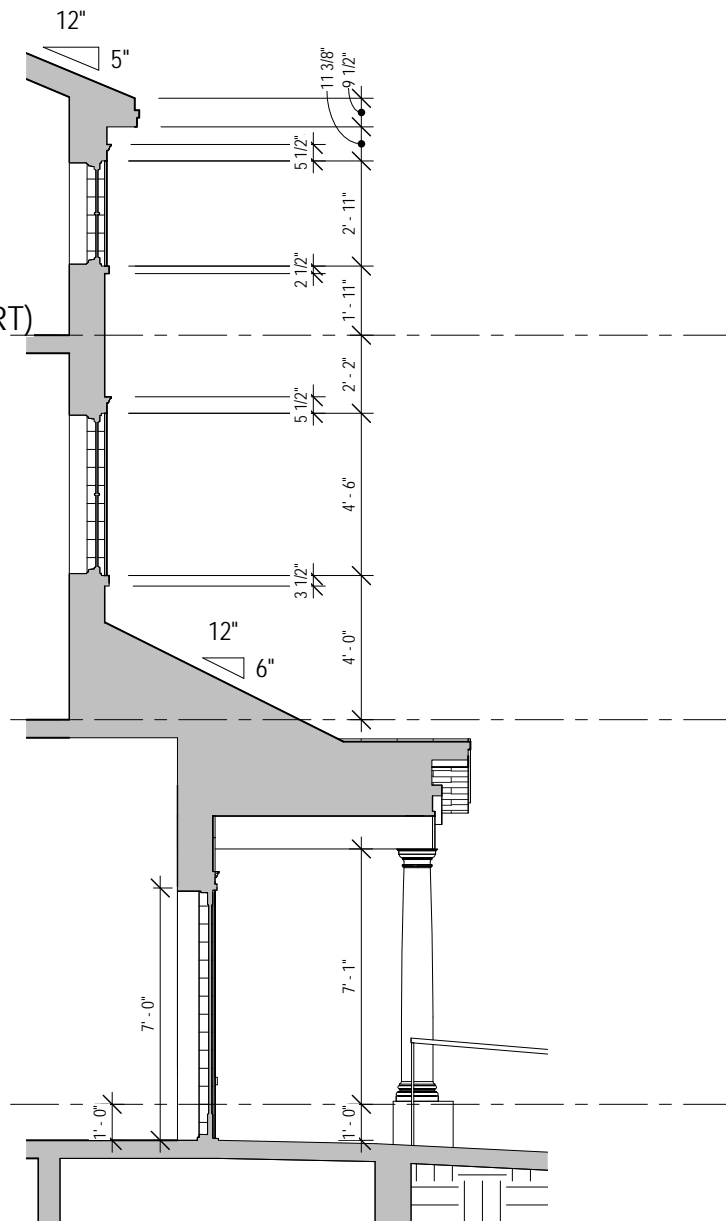
3RD (SHORT)  
48' - 4"

2ND  
37' - 8"

2ND  
37' - 8"

1ST  
27' - 0"

1ST  
27' - 0"



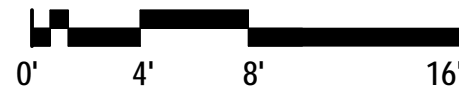
#### ELEVATION LEGEND

	SYNTHETIC SLATE ROOF SHINGLES
	BRICK
	COMPOSITE RAINSCREEN BOARD
	ZINC PANELING

1 HDC ELEVATION - FRONT - NEW MAIN ENTRY  
3/16" = 1'-0"

2 HDC SECTION - THROUGH NEW MAIN ENTRY  
3/16" = 1'-0"

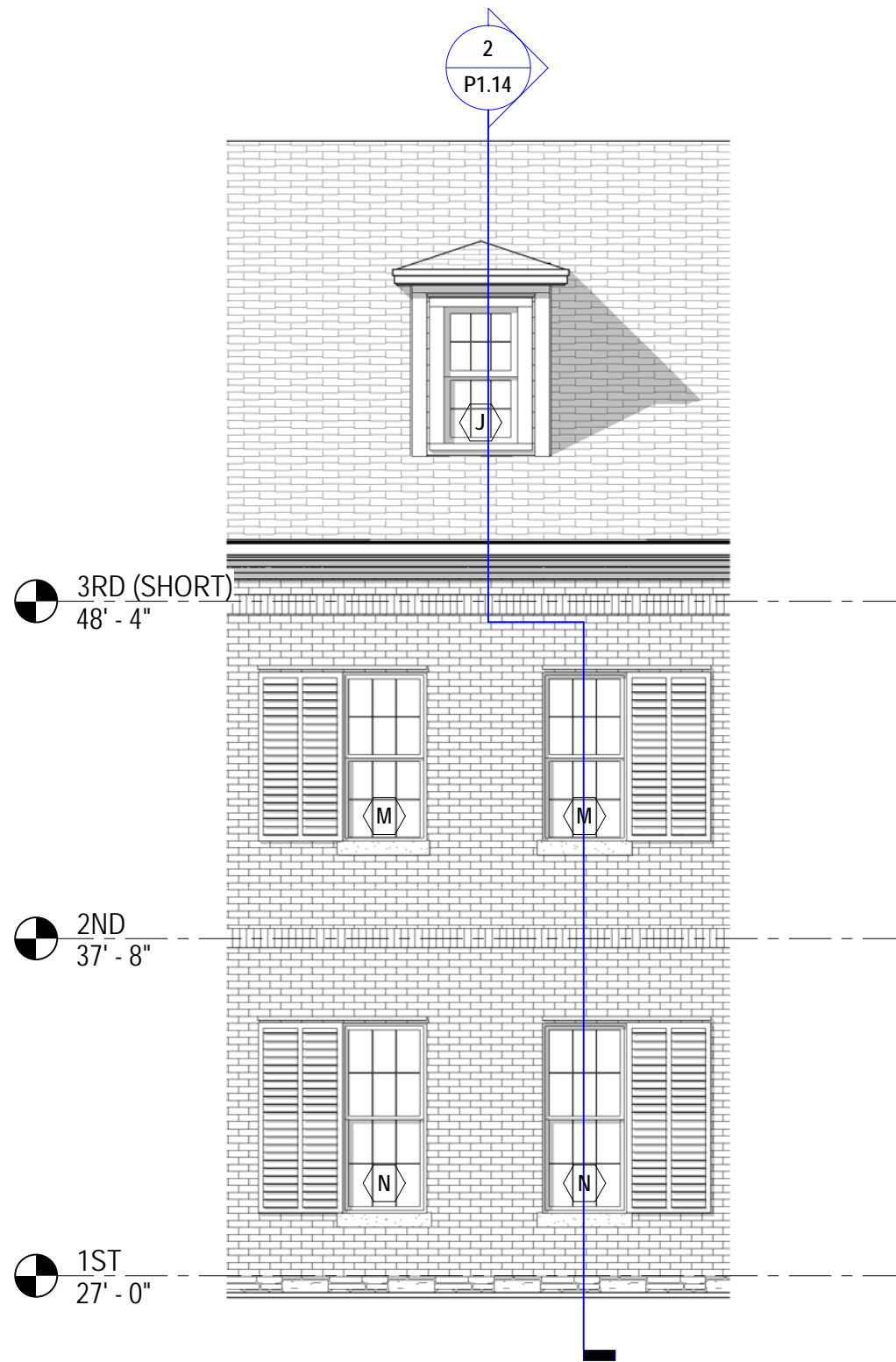
GRAPHIC SCALE: 3/16" = 1'-0"



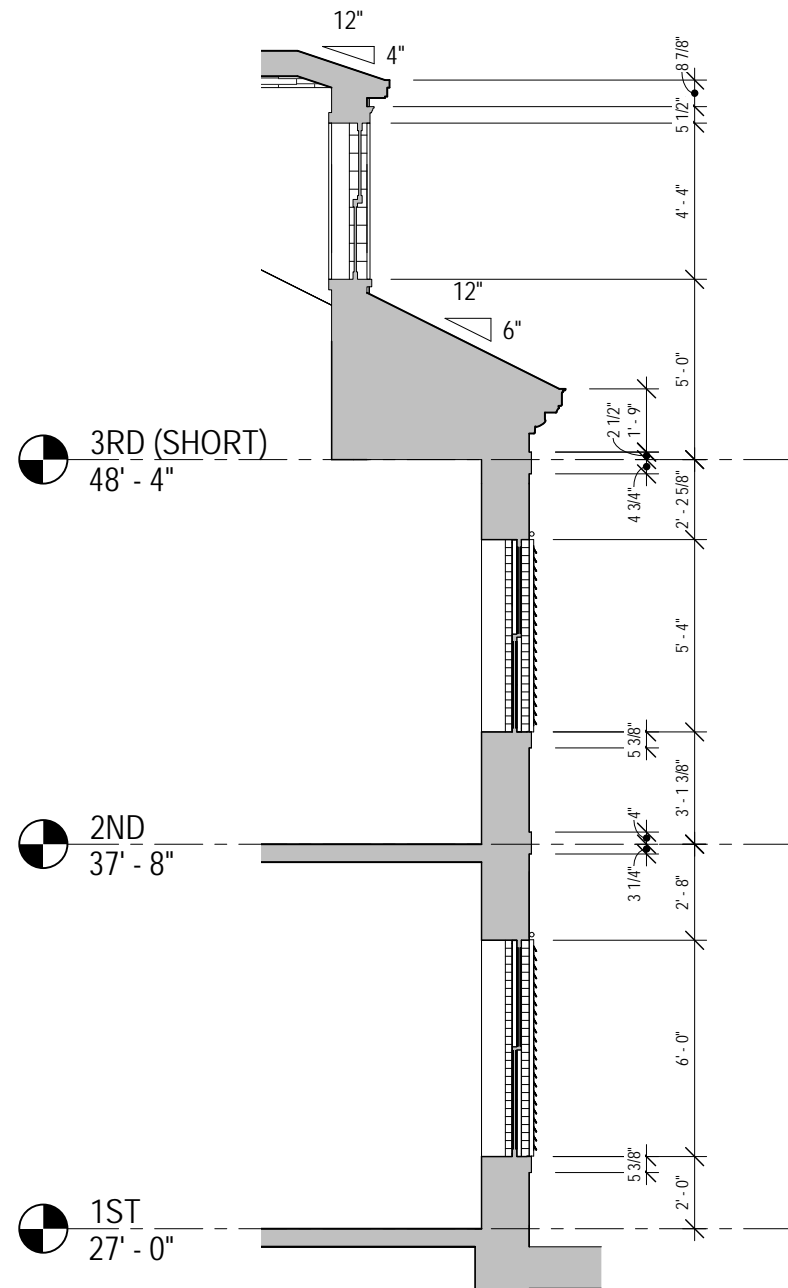
P1.13

## PARTIAL EXTERIOR ELEVATIONS

93 PLEASANT STREET  
HDCws 5 August 25, 2021

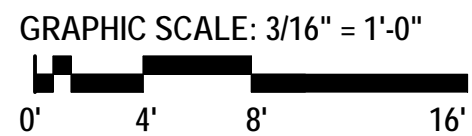


1 HDC ELEVATION - FRONT - NEW DORMER  
3/16" = 1'-0"



2 HDC SECTION - THROUGH DORMER  
3/16" = 1'-0"

ELEVATION LEGEND	
	SYNTHETIC SLATE ROOF SHINGLES
	BRICK
	COMPOSITE RAINSCREEN BOARD
	ZINC PANELING

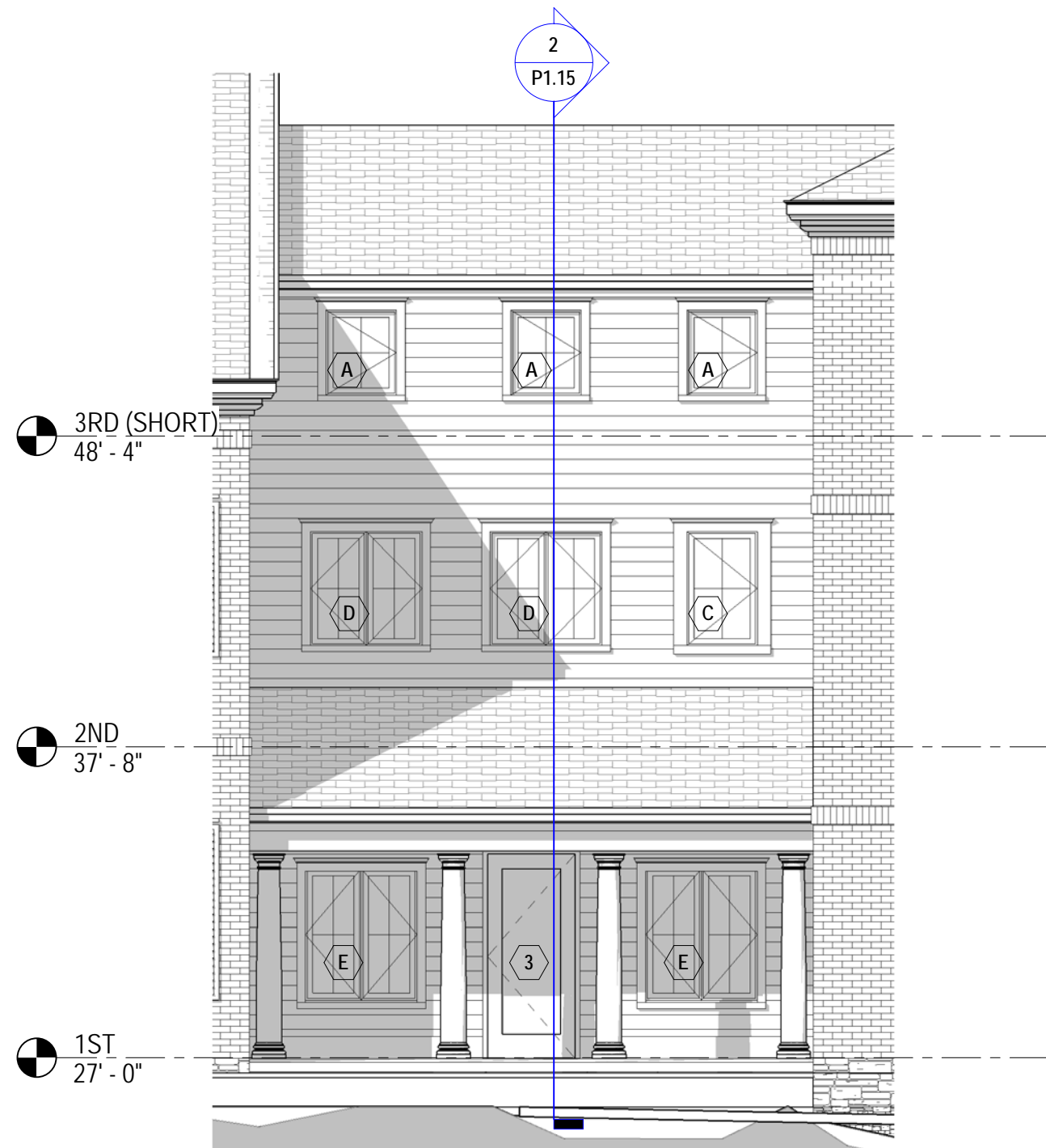


P1.14

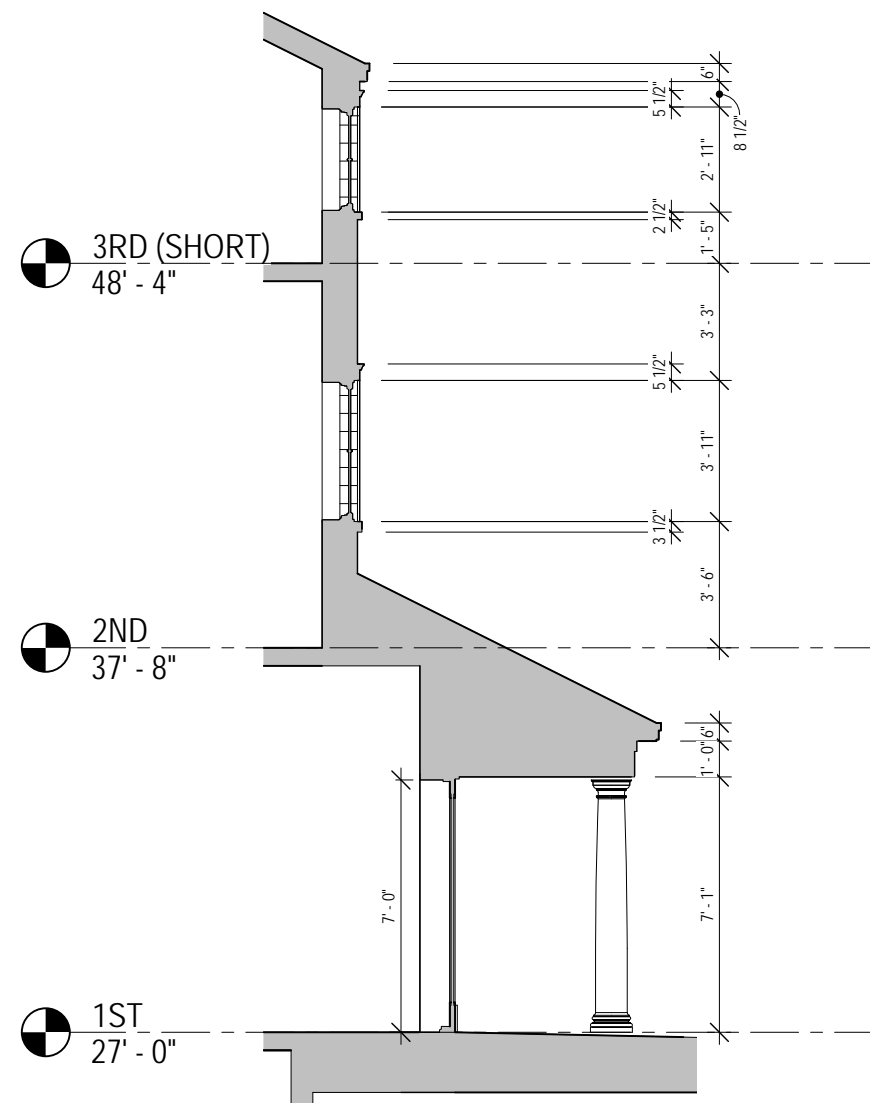
## PARTIAL EXTERIOR ELEVATIONS

93 PLEASANT STREET  
HDCws 5 August 25, 2021





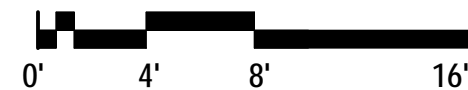
1 HDC ELEVATION - FRONT - NEW SIDE ENTRY  
3/16" = 1'-0"



2 HDC SECTION - THROUGH SIDE ENTRY  
3/16" = 1'-0"

ELEVATION LEGEND	
	SYNTHETIC SLATE ROOF SHINGLES
	BRICK
	COMPOSITE RAINSCREEN BOARD
	ZINC PANELING

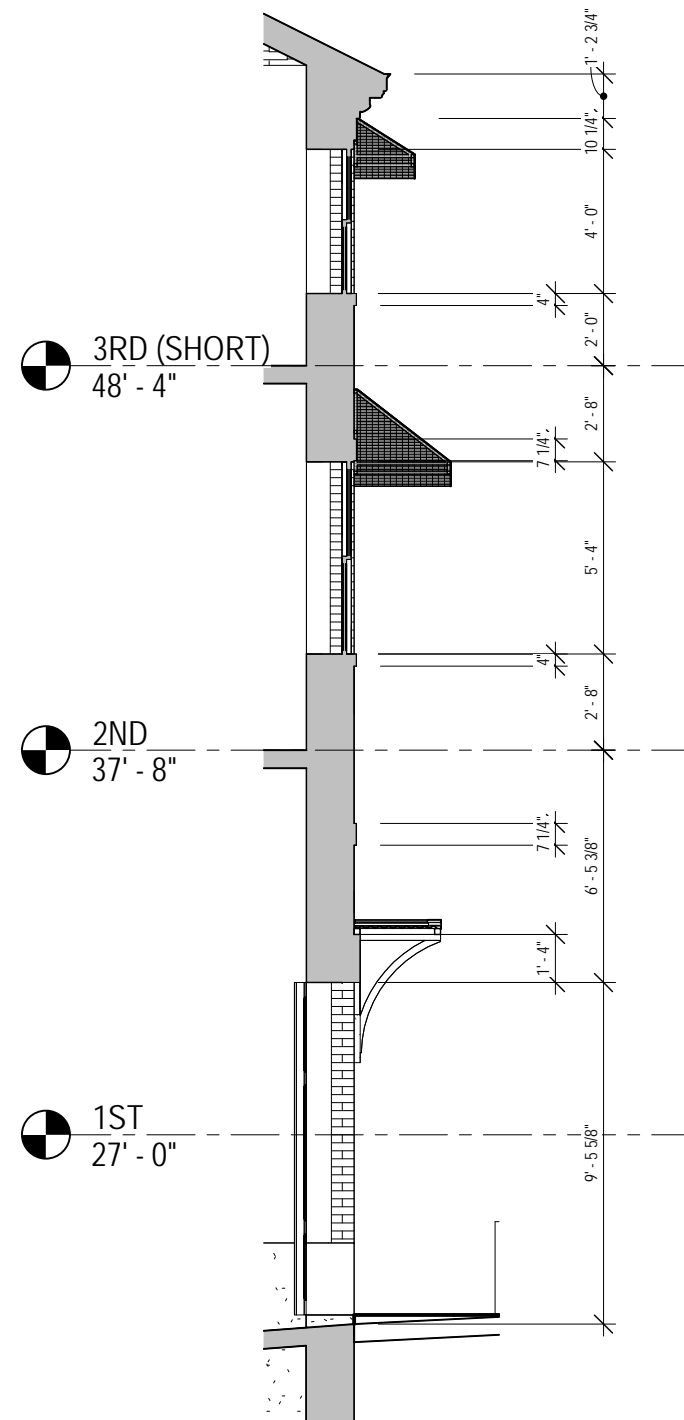
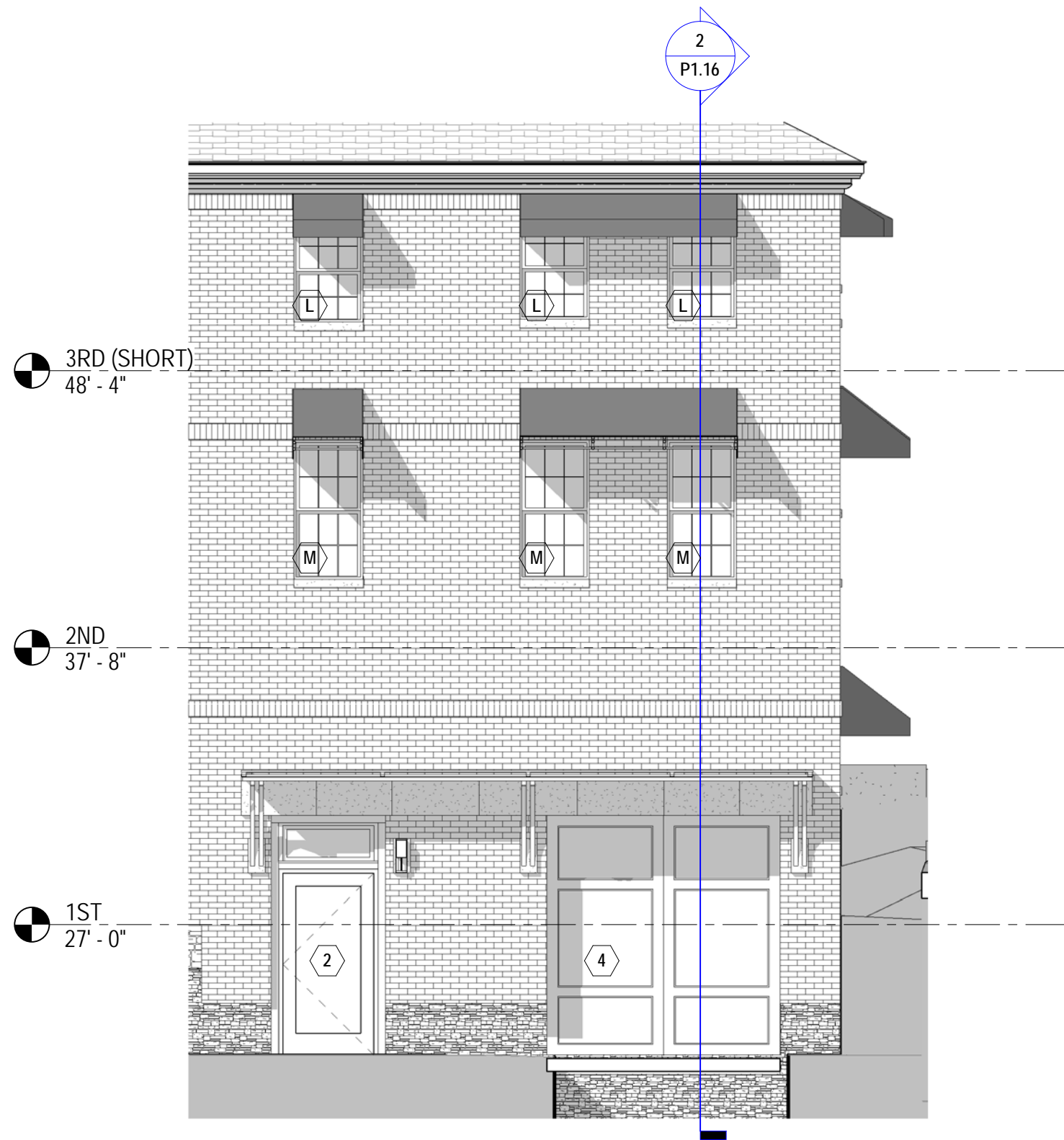
GRAPHIC SCALE: 3/16" = 1'-0"

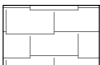
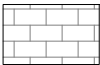
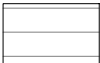
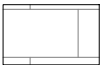


P1.15

## PARTIAL EXTERIOR ELEVATIONS

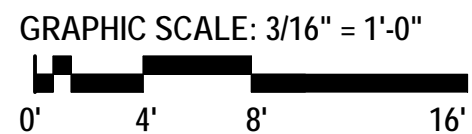
93 PLEASANT STREET  
HDCws 5 August 25, 2021



ELEVATION LEGEND	
	SYNTHETIC SLATE ROOF SHINGLES
	BRICK
	COMPOSITE RAINSCREEN BOARD
	ZINC PANELING

1 HDC ELEVATION - FRONT - NEW ACCESS DOOR & GARAGE DOOR  
3/16" = 1'-0"

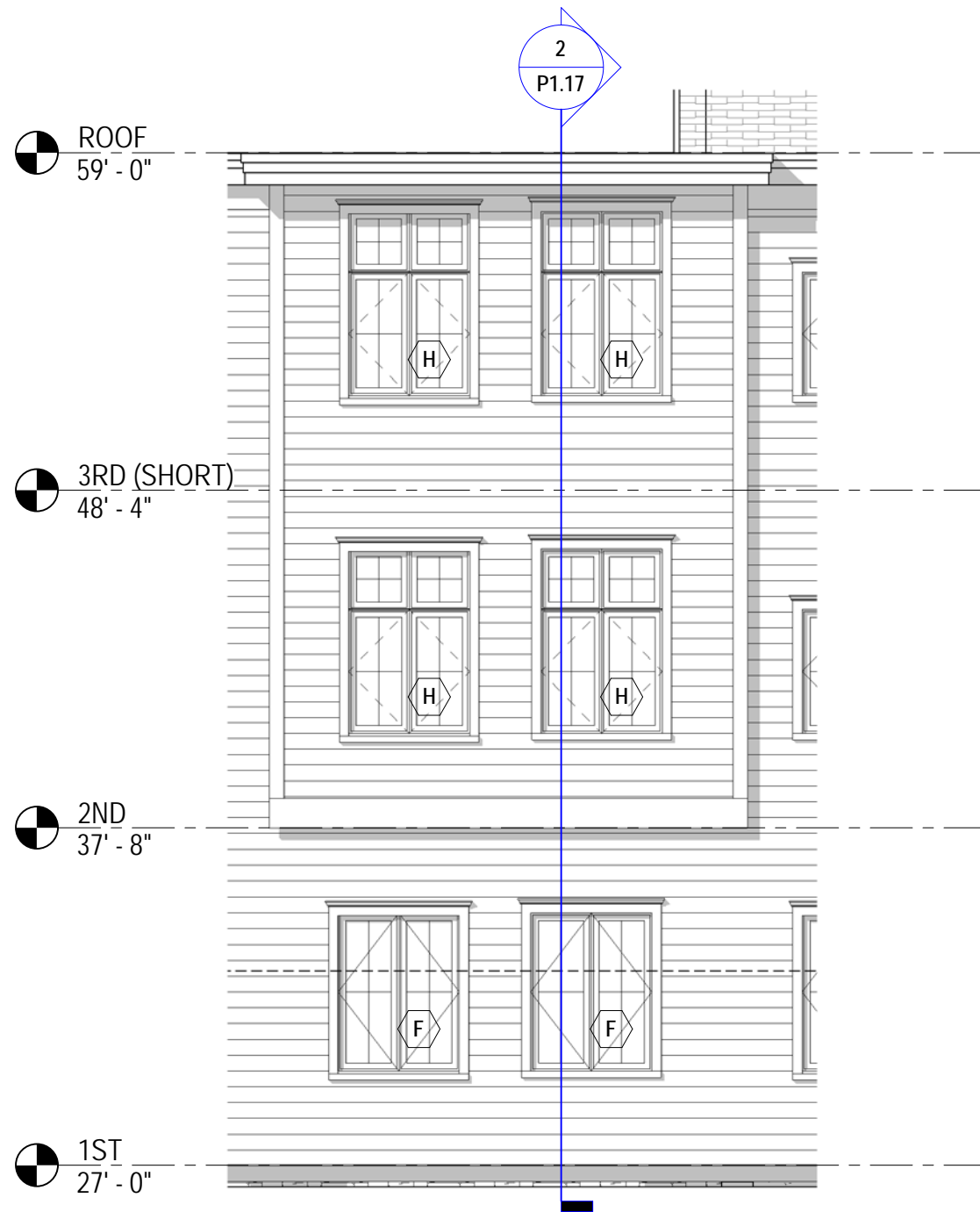
2 HDC SECTION - THROUGH GARAGE DOOR  
3/16" = 1'-0"



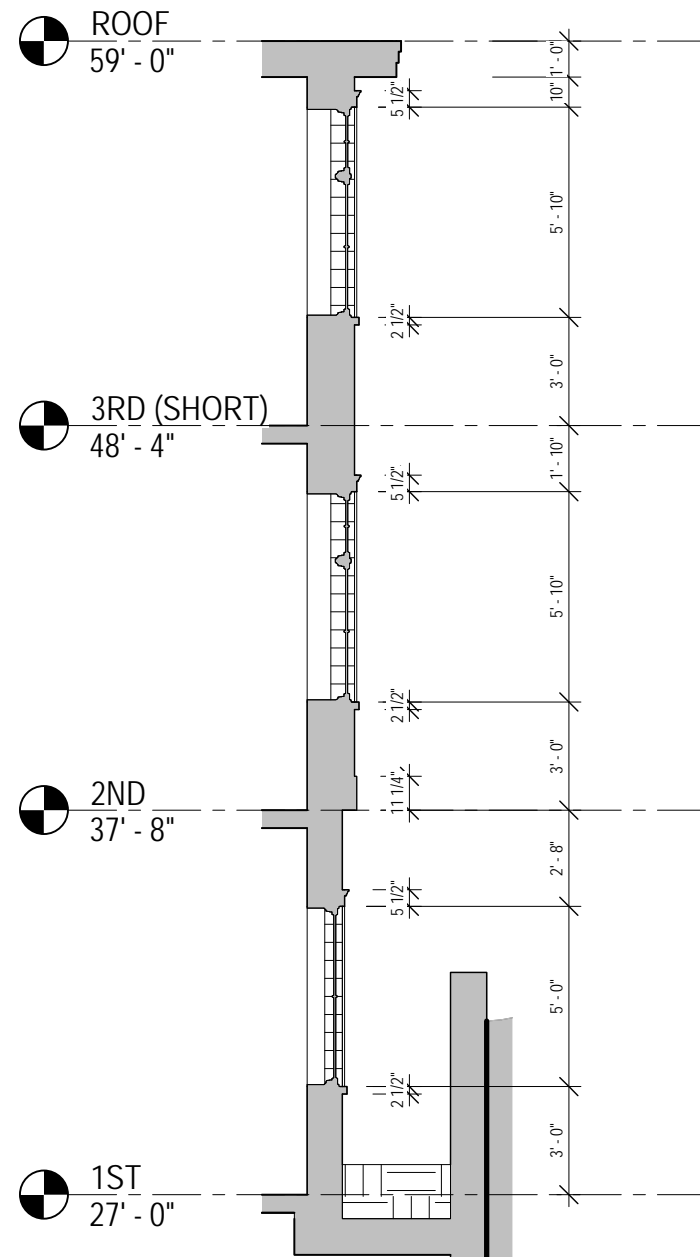
P1.16

## PARTIAL EXTERIOR ELEVATIONS

93 PLEASANT STREET  
HDCws 5 August 25, 2021



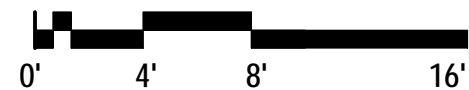
1 HDC ELEVATION - REAR - BUMPOUT  
3/16" = 1'-0"



2 HDC SECTION - THROUGH REAR BUMPOUT  
3/16" = 1'-0"

ELEVATION LEGEND	
	SYNTHETIC SLATE ROOF SHINGLES
	BRICK
	COMPOSITE RAINSCREEN BOARD
	ZINC PANELING

GRAPHIC SCALE: 3/16" = 1'-0"

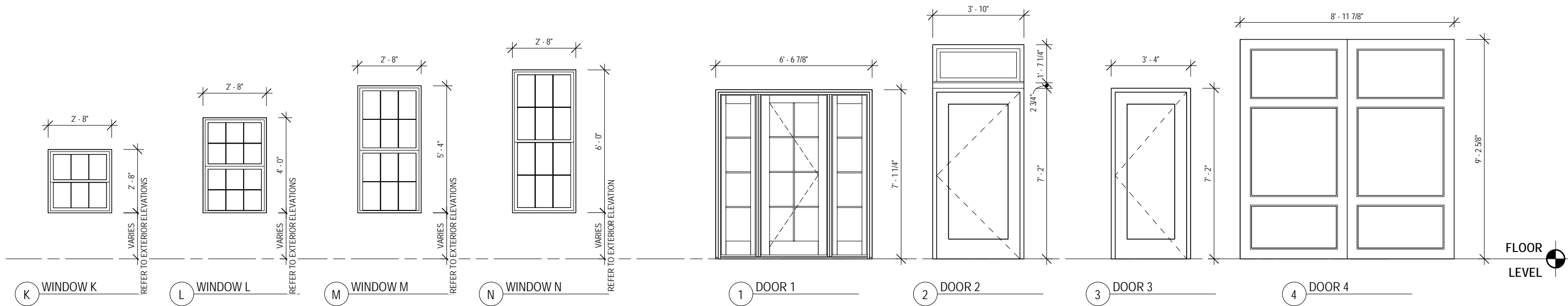
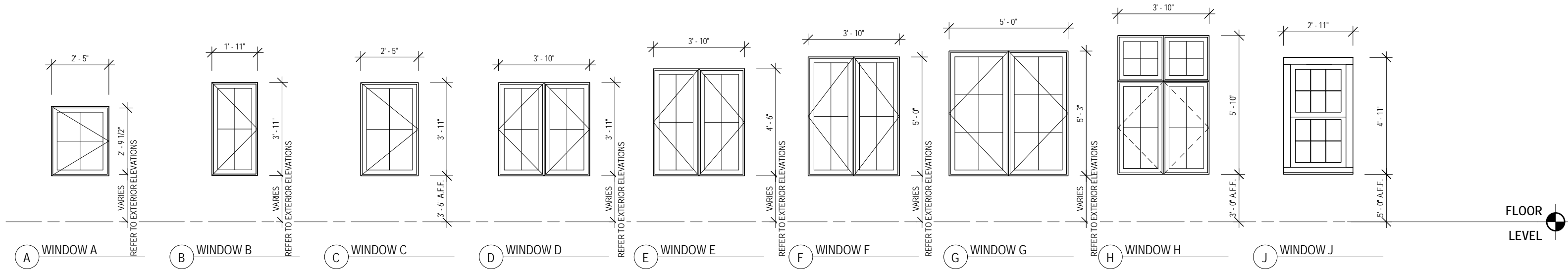


P1.17

## PARTIAL EXTERIOR ELEVATIONS

93 PLEASANT STREET  
HDCws 5 August 25, 2021





**P1.18**

## WINDOW & DOOR TYPES

93 PLEASANT STREET  
HDCws 5 August 25, 2021

93 Pleasant Street - New Construction, Housing

8/25/2021

element	material	manufacturer/model	finish/color
brick	water struck	Morin Brick	royalriver narrow flash range, nb
masonry sills & trim	granite		to match existing building (concord gray?)
siding	composite polyash clapboards	Boral TruExterior	
trim	composite polyash	Boral TruExterior	
roofing	synthetic slate	Eco-star, Empire slate	smoke
windows	alum clad wood: pella or lepage; or fiberglass clad wood:		
doors	kolbe. Doulbe hung & casement		
shutters	kawneer		
	aluminum sliding plantation shutters	Two-USA, Weatherwell Aluminum Shutters	Painted black
		Frame: Gobal Industrian; Awntech H23-6K ; perf metal -	
		McNichols, 16890016 McNICHOLS® Perforated Metal	
		Designer Perforated, Slotted, AIRLINE 1468, Aluminum, Alloy	
		3003-H14, .0630" Thick (14 Gauge), 1-1/2" x 1/4" Square-End	
		Slot, Straight Centers, 68% Open Area	Painted black
awnings	perforated aluminum panel on steel frame		
	corrogated metal decking on steel frame with curved steel		
canopy& brackets (@ garage door & entry)	brackets	General Awnings, Imperial Marquee; W-shaped panels	Painted black
snow guards	brass cleats		
gutters & downspouts	copper		