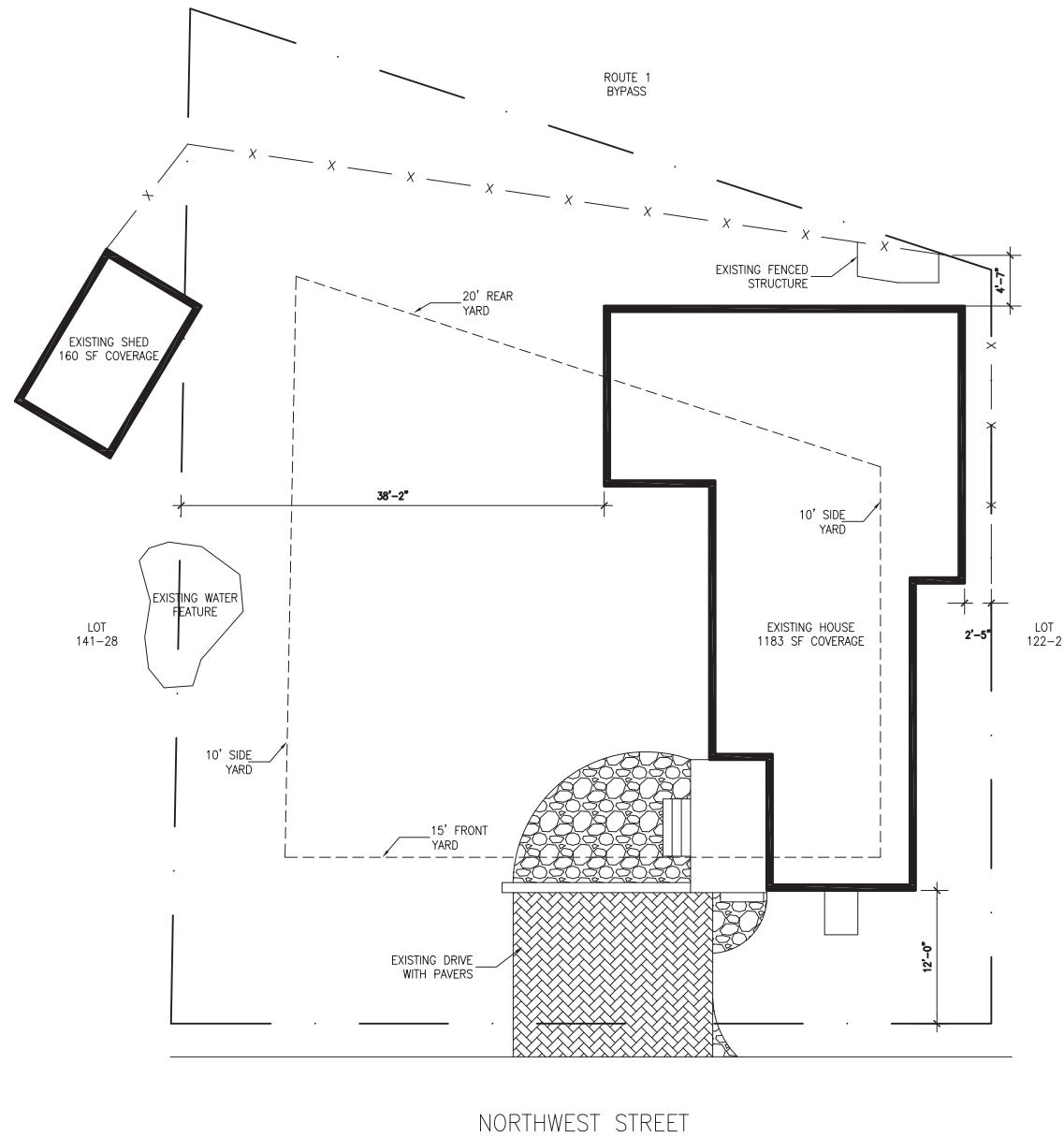


CITY OF PORTSMOUTH  
Historic District Commission  
Public Hearing  
December 2, 2020



# EXISTING SITE PLAN

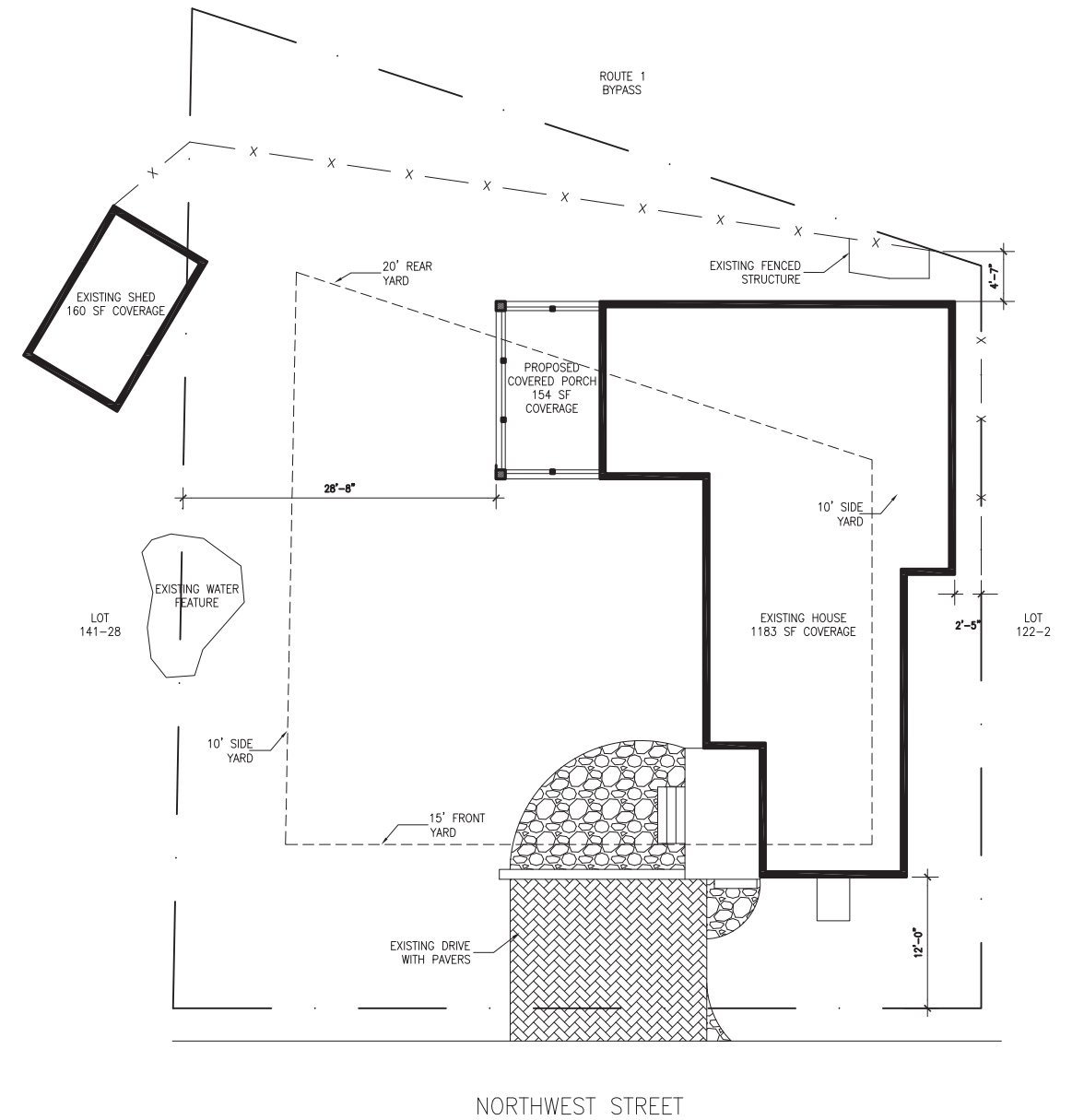
SCALE: 1/8"=1'-0"



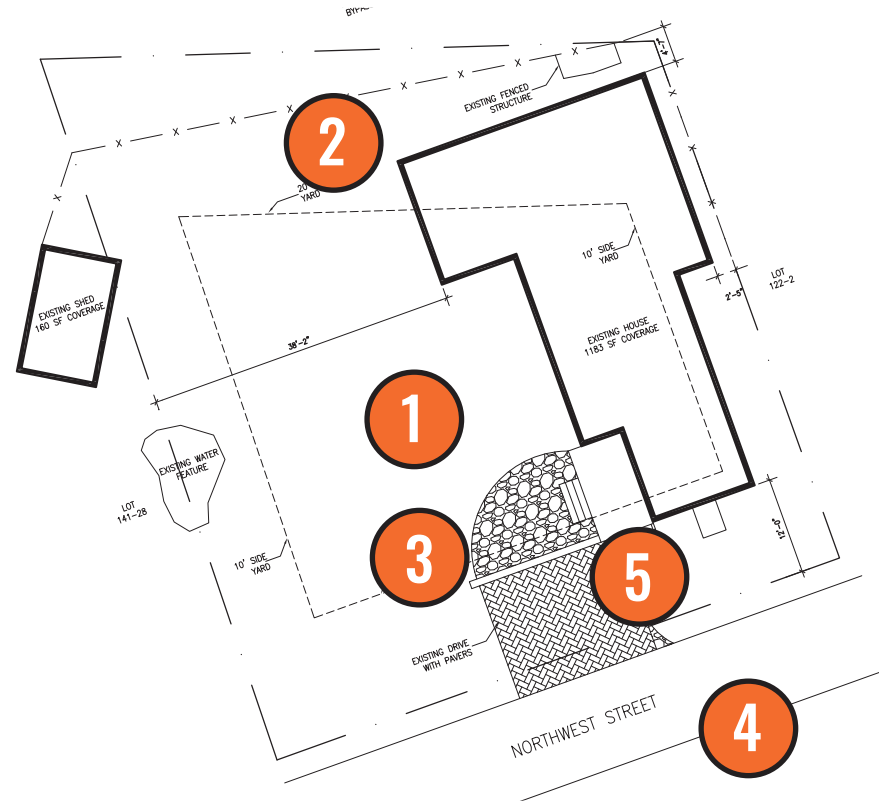
EXISTING SITE PLAN

KEY  
 ——— PROPERTY LINE  
 - - - - - SETBACK  
 ——— EXISTING FENCE

EXISTING LOT COVERAGE:	
HOUSE:	1,265
SHED:	4
TOTAL:	1,269
EXISTING OPEN SPACE:	
SITE:	5,844
HOUSE:	-1,265
SHED:	-4
WALKWAY:	-166
DRIVE:	-212
TOTAL:	4,197
PROPOSED LOT COVERAGE:	
HOUSE:	1,419
SHED:	4
TOTAL:	1,423
PROPOSED OPEN SPACE:	
SITE:	5,844
HOUSE:	-1,419
SHED:	-4
WALKWAY:	-166
DRIVE:	-212
TOTAL:	4,043



PROPOSED SITE PLAN



1 SOUTH CORNER



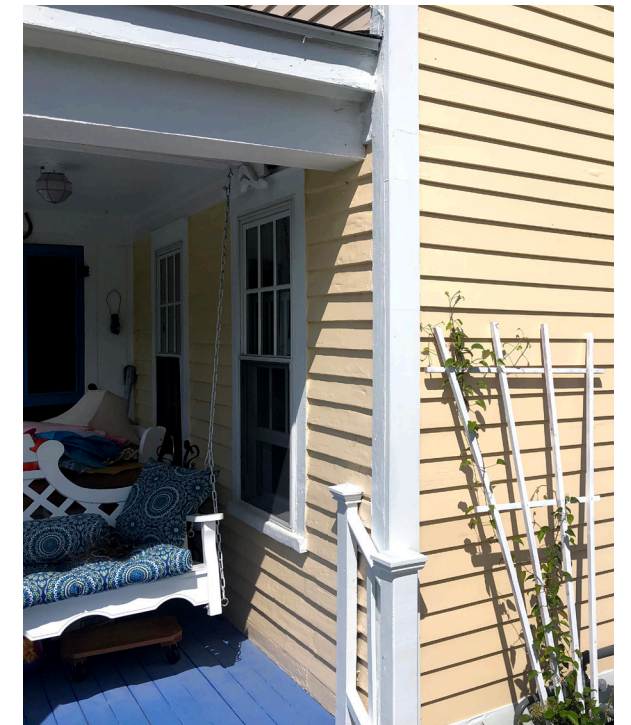
2 NORTH FACADE



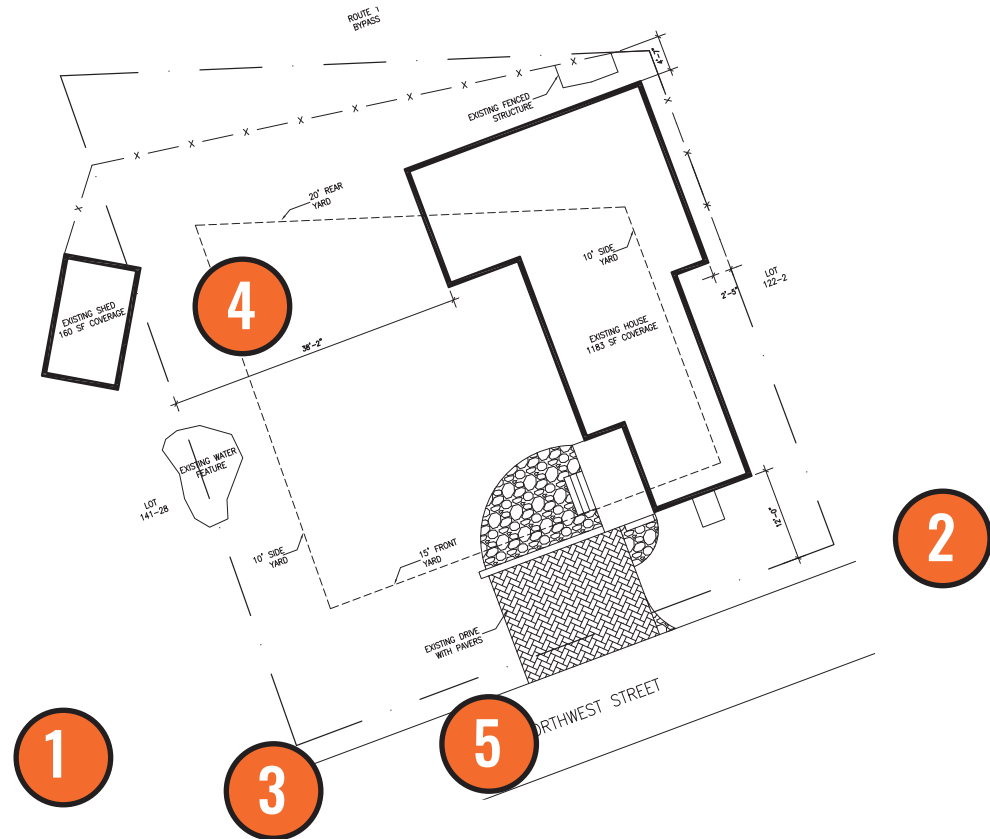
3 WEST FACADE



4 SOUTH FACADE



5 SOUTH PORCH DETAIL



1 SOUTH FACADE FROM ADJACENT YARD



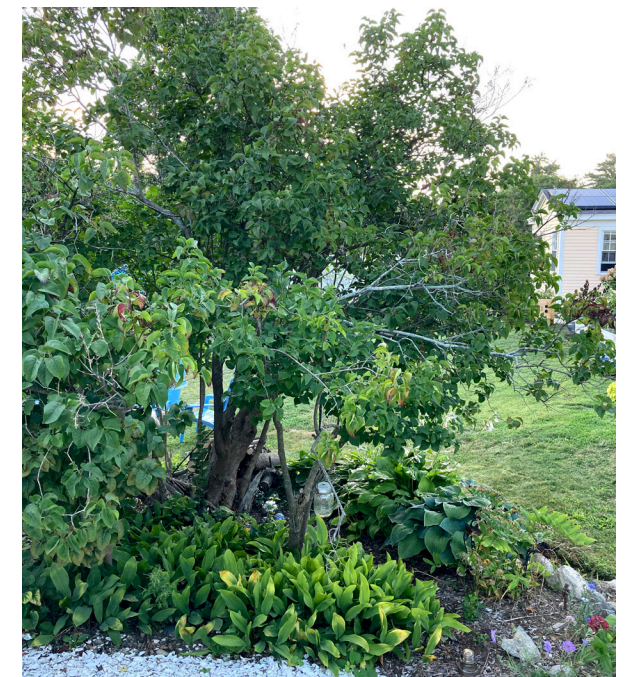
2 NORTHEAST CORNER FROM STREET



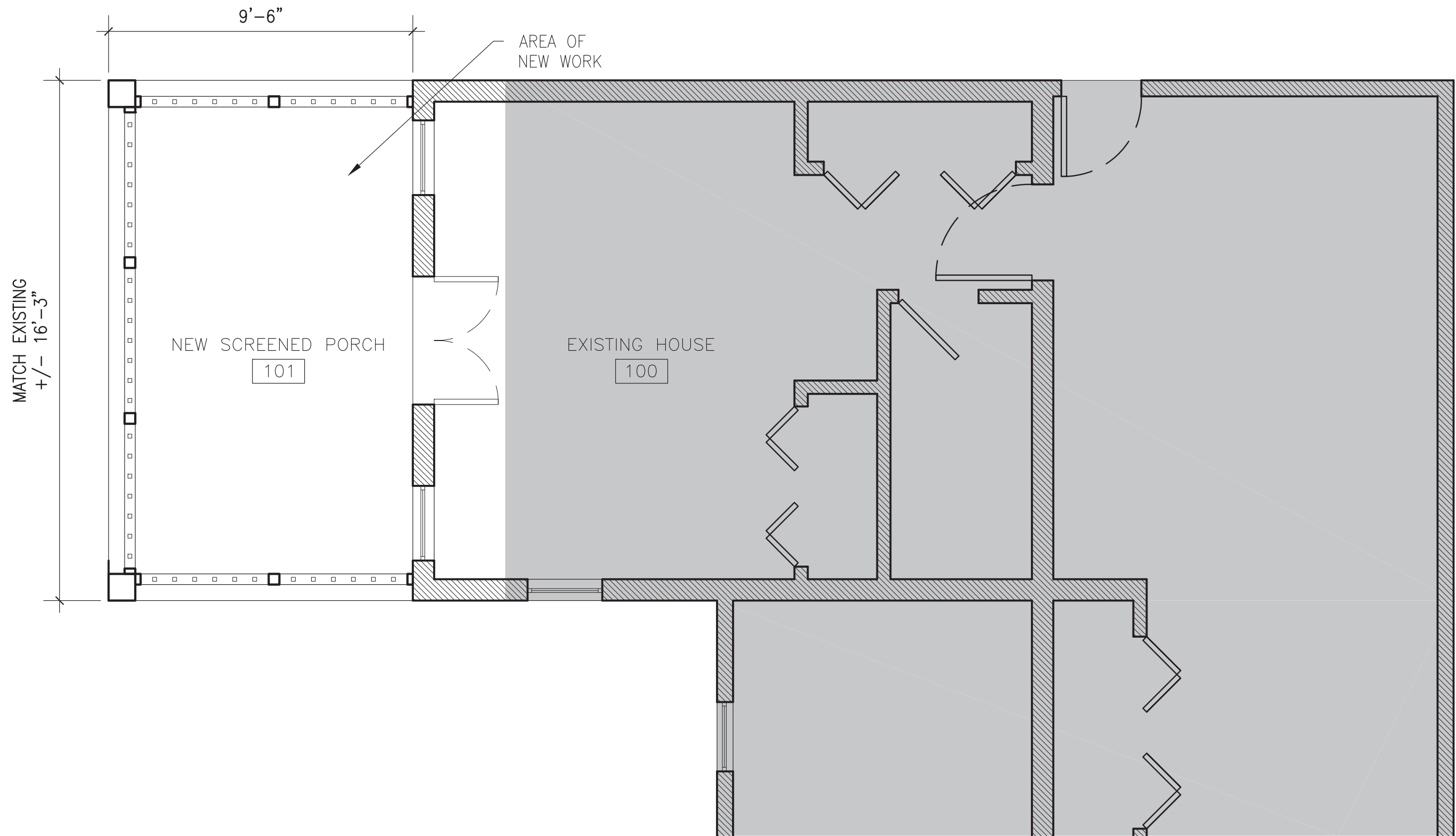
3 SOUTHEAST CORNER FROM STREET



4 SOUTH EAST CORNER FROM YARD

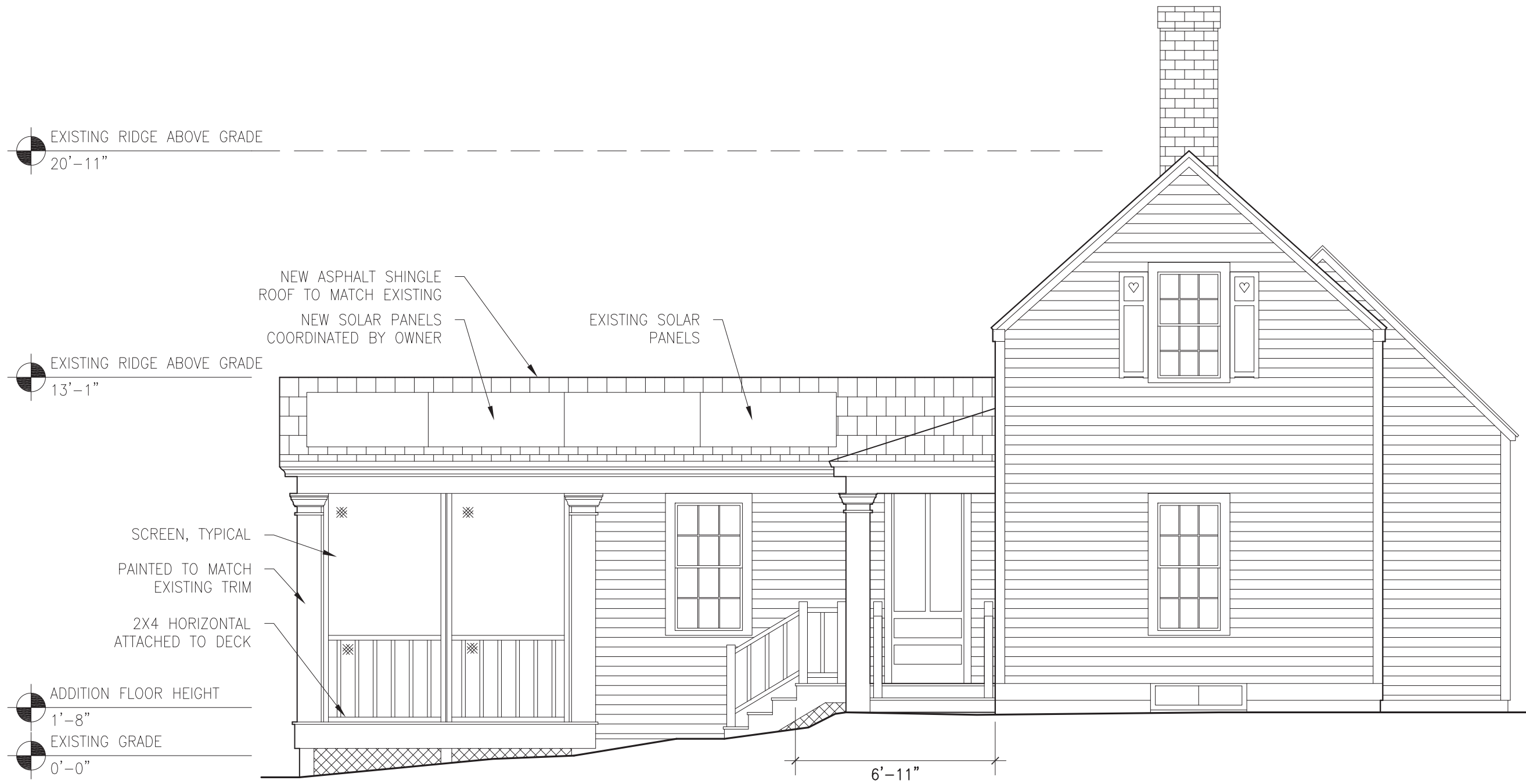


5 AREA OF NEW PORCH FROM STREET



# PROPOSED ELEVATIONS

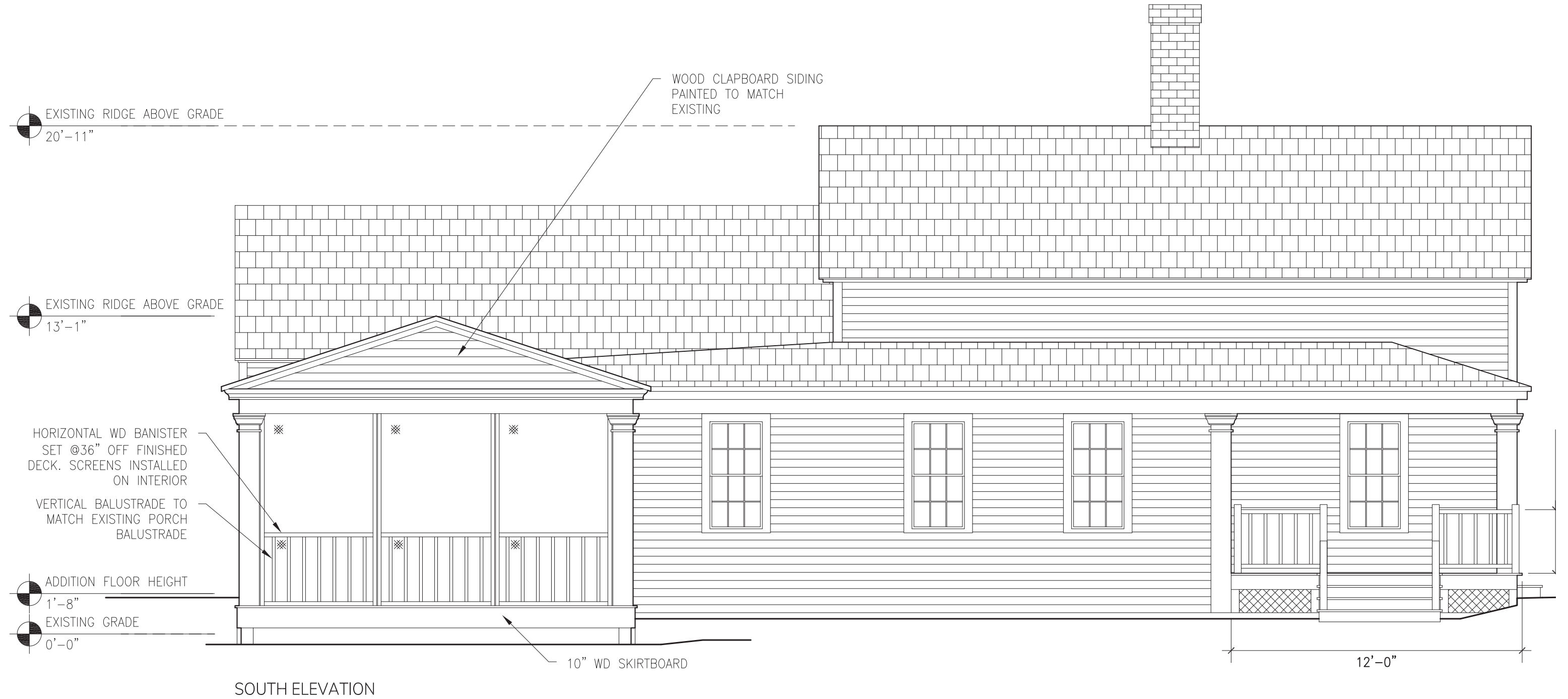
SCALE: 3/16"=1'-0"



EAST ELEVATION

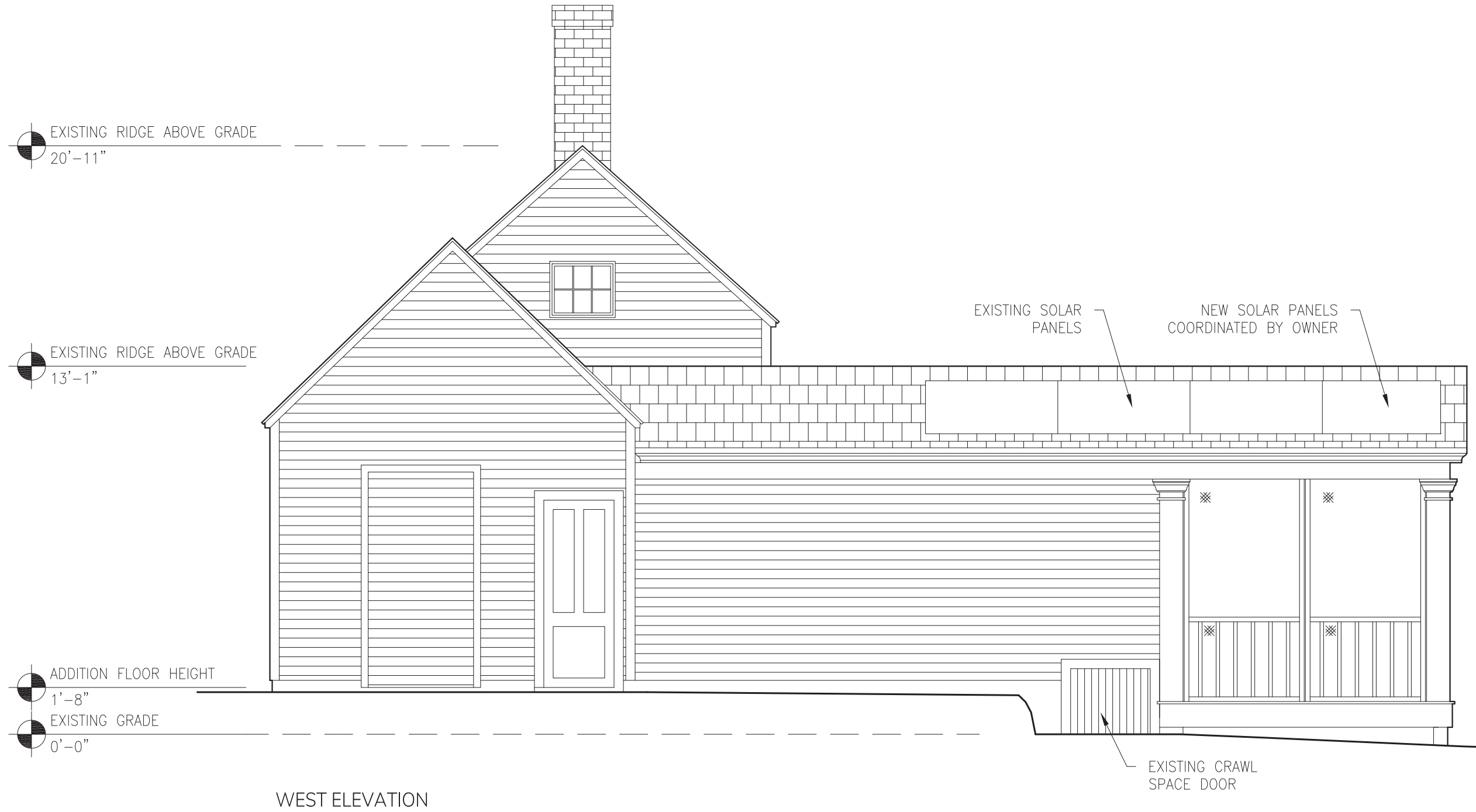
# PROPOSED ELEVATIONS

SCALE: 3/16"=1'-0"



# PROPOSED ELEVATIONS

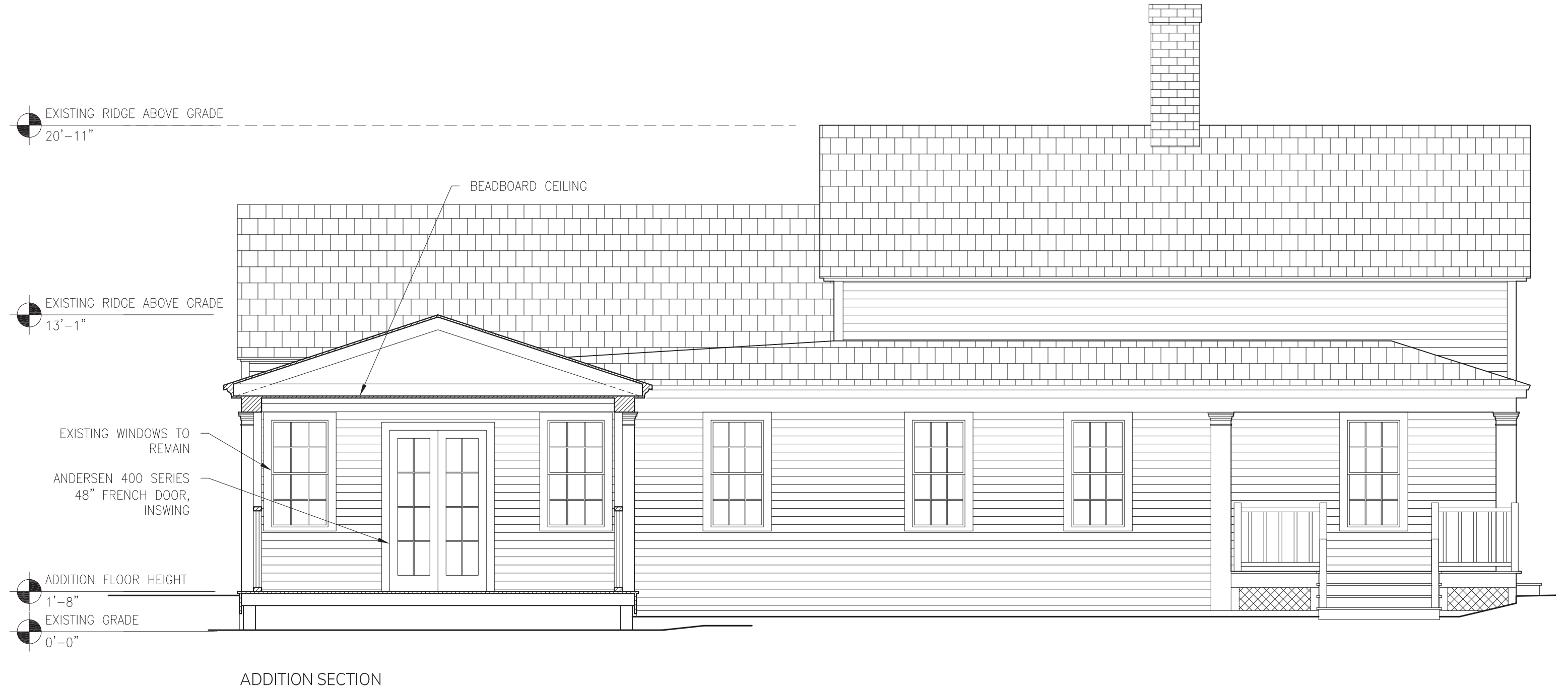
SCALE: 3/16"=1'-0"





# PROPOSED SECTION

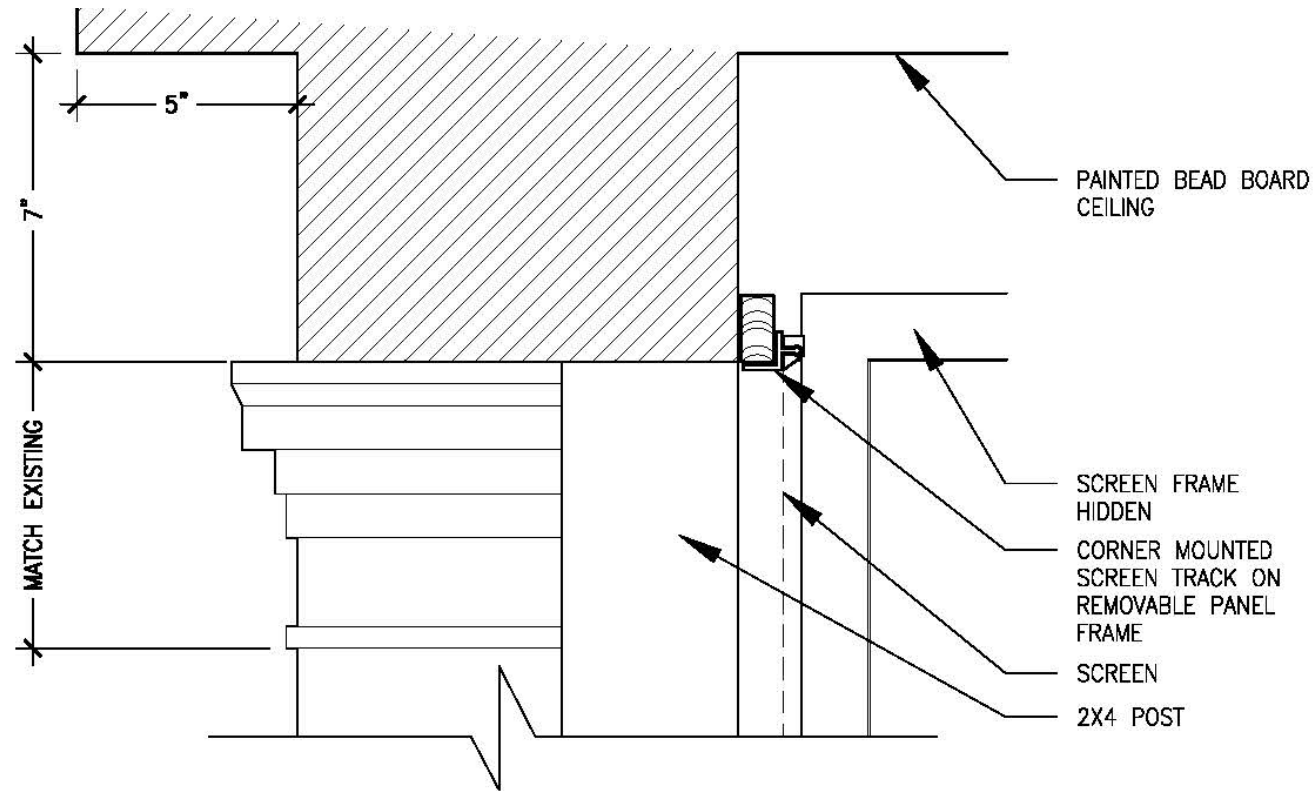
SCALE: 1/4"=1'-0"



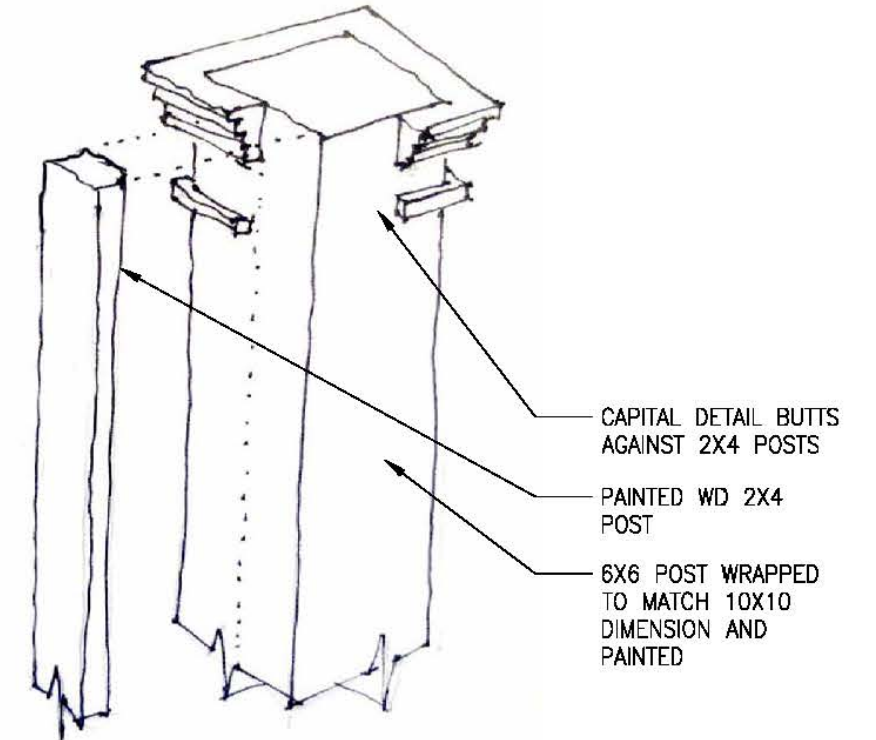
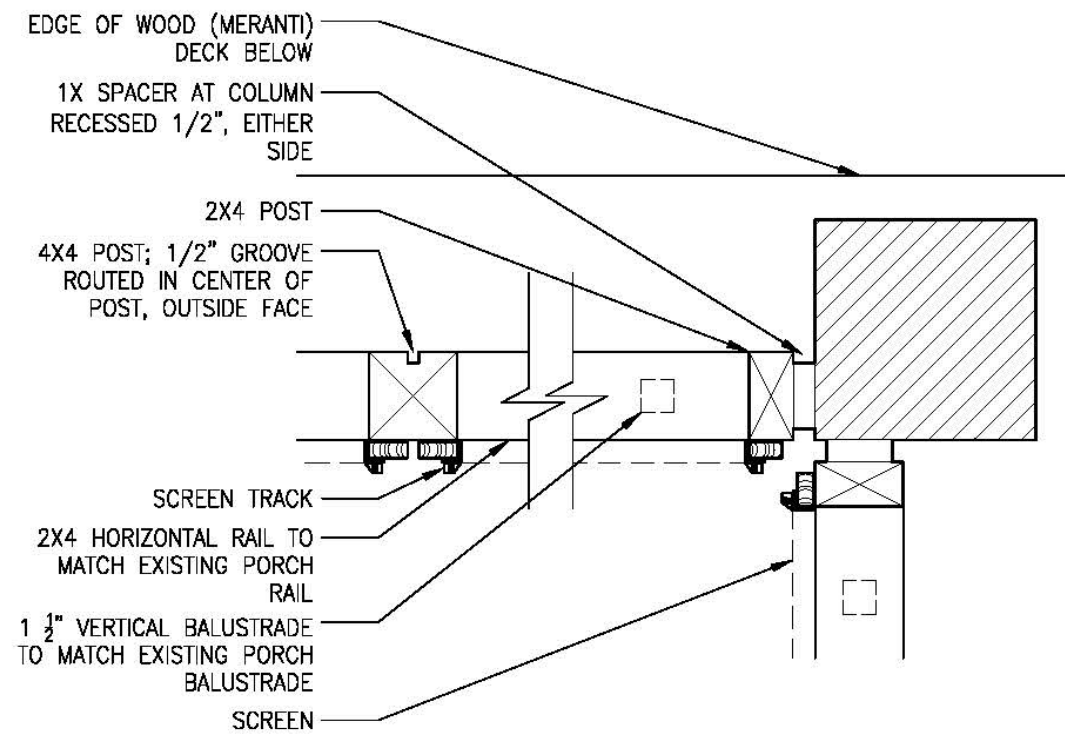
# DETAILS

SCALE: AS NOTED

SECTION DETAIL  
3" = 1'-0"



PLAN DETAIL  
1 1/2" = 1'-0"



POST AT COLUMN CAPITAL  
NOT TO SCALE

PROPOSED DOORS AT NEW CONSTRUCTION



400 SERIES FRENCHWOOD® HINGED PATIO DOOR

GLASS OPTIONS

All patio doors feature tempered glass.

- Low-E4® glass
- Low-E4 glass with HeatLock® Technology
- Low-E4 Sun glass
- Low-E4 SmartSun™ glass
- Low-E4 SmartSun glass with HeatLock Technology

- Virtually maintenance-free
- Perma-Shield® exteriors are low maintenance and never need painting
- Frame exterior is protected by a tough vinyl cover that resists dents and repels water and provides long-lasting protection
- Weather-resistant construction for greater comfort and energy efficiency
- Weatherstrip is designed to help seal out drafts, wind and water
- Frenchwood® gliding patio doors feature adjustable ball-bearing rollers provide smooth, long-lasting\* gliding operation
- Frenchwood hinged patio doors feature adjustable hinges for long-lasting\* performance
- Add style with grilles, exterior trim, art glass or patterned glass



EXISTING WINDOWS TO REMAIN

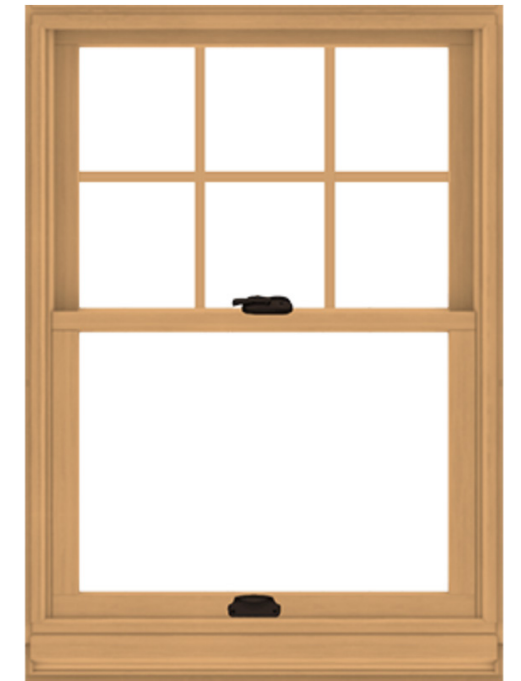


400 SERIES DOUBLE-HUNG WINDOW

GLASS OPTIONS

- Low-E4® glass
- Low-E4 glass with HeatLock® Technology
- Low-E4 Sun glass
- Low-E4 SmartSun™ glass
- Low-E4 SmartSun glass with HeatLock Technology

- Virtually maintenance-free
- Perma-Shield® exteriors never need painting and won't peel, blister, flake or corrode\*
- Frame exterior is protected by a tough vinyl cover that resists dents and repels water and provides long-lasting protection
- Weather-resistant construction for greater comfort and energy efficiency
- Weatherstripping is designed to seal out drafts, wind and water
- Add style with grilles, exterior trim, art glass or patterned glass
- Available with Stormwatch® Protection for coastal areas



PROPOSED SCREEN SYSTEM

# SCREENEZE®

The No-Spline Screen Porch System



A ScreenEze System installed

SCREENEZE CHANNEL  
COLOR: WHITE



INSTALLATION



CORNER MOUNT SYSTEM

