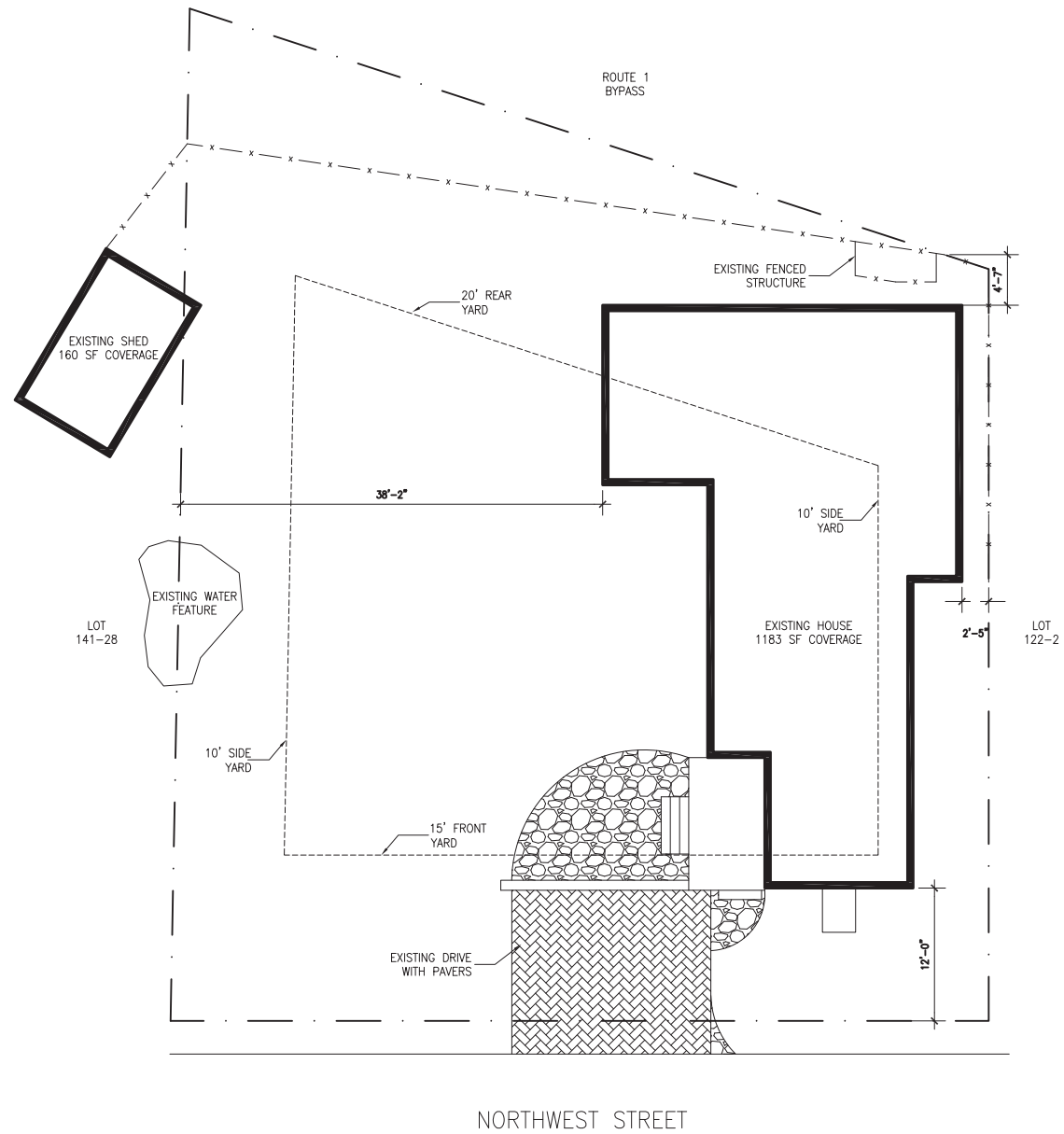


CITY OF PORTSMOUTH
Historic District Commission
Public Hearing
November 4, 2020



EXISTING SITE PLAN

SCALE: 1/8"=1'-0"

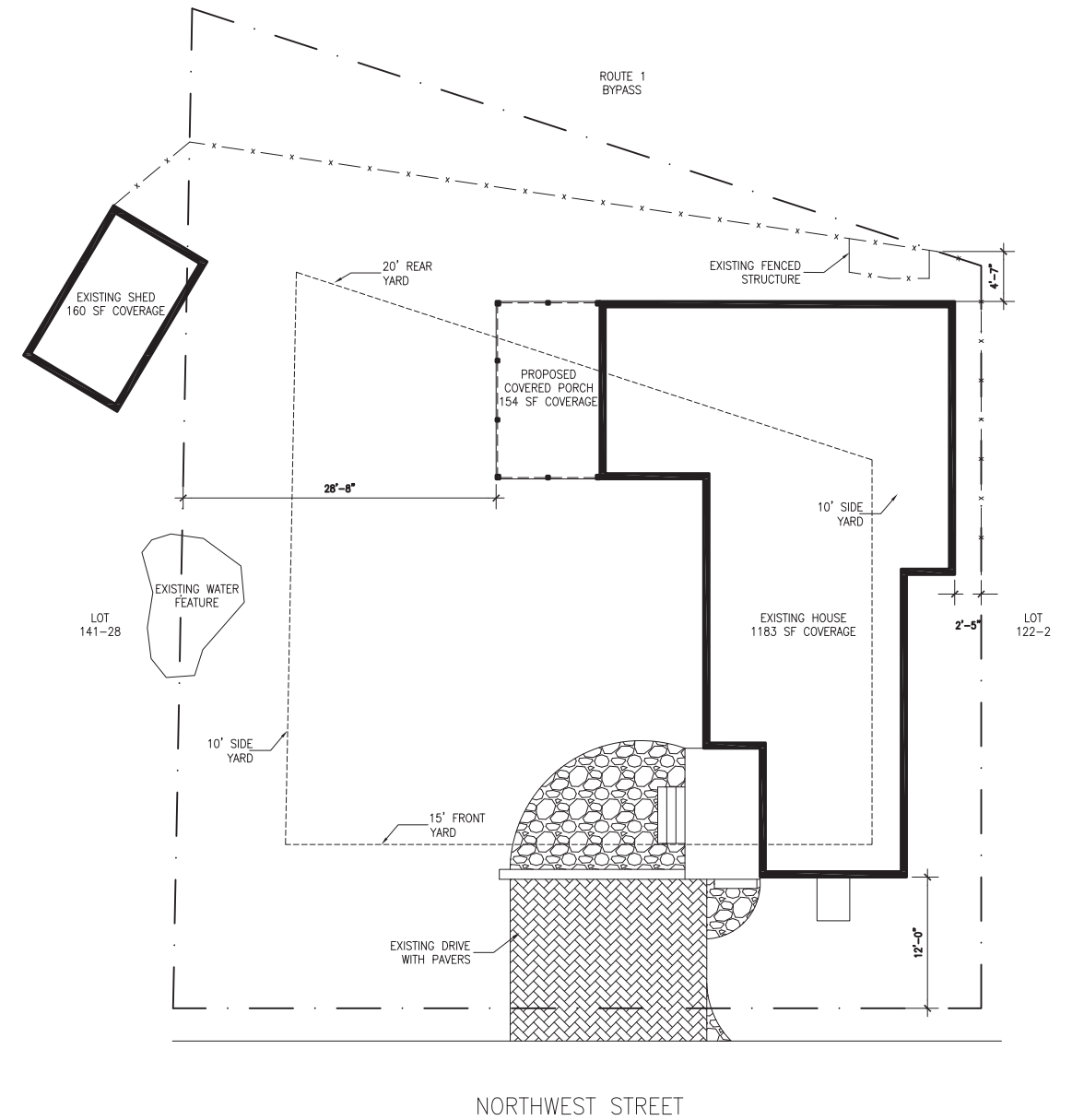


KEY
 ——— PROPERTY LINE
 - - - - - SETBACK
 - x - EXISTING FENCE

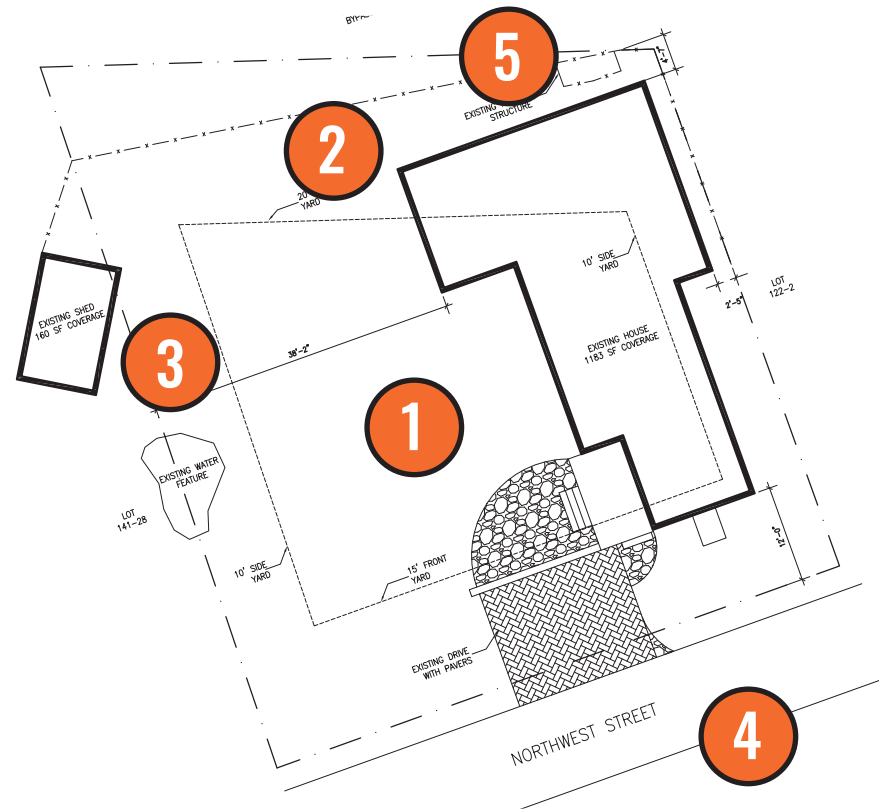
EXISTING LOT COVERAGE:	
HOUSE:	1,265
SHED:	4
TOTAL:	1,269
EXISTING OPEN SPACE:	
SITE:	5,844
HOUSE:	-1,265
SHED:	-4
WALKWAY:	-166
DRIVE:	-212
TOTAL:	4,197
PROPOSED LOT COVERAGE:	
HOUSE:	1,419
SHED:	4
TOTAL:	1,423
PROPOSED OPEN SPACE:	
SITE:	5,844
HOUSE:	-1,419
SHED:	-4
WALKWAY:	-166
DRIVE:	-212
TOTAL:	4,043



EXISTING SITE PLAN



PROPOSED SITE PLAN



1 SOUTH CORNER



2 NORTH FACADE



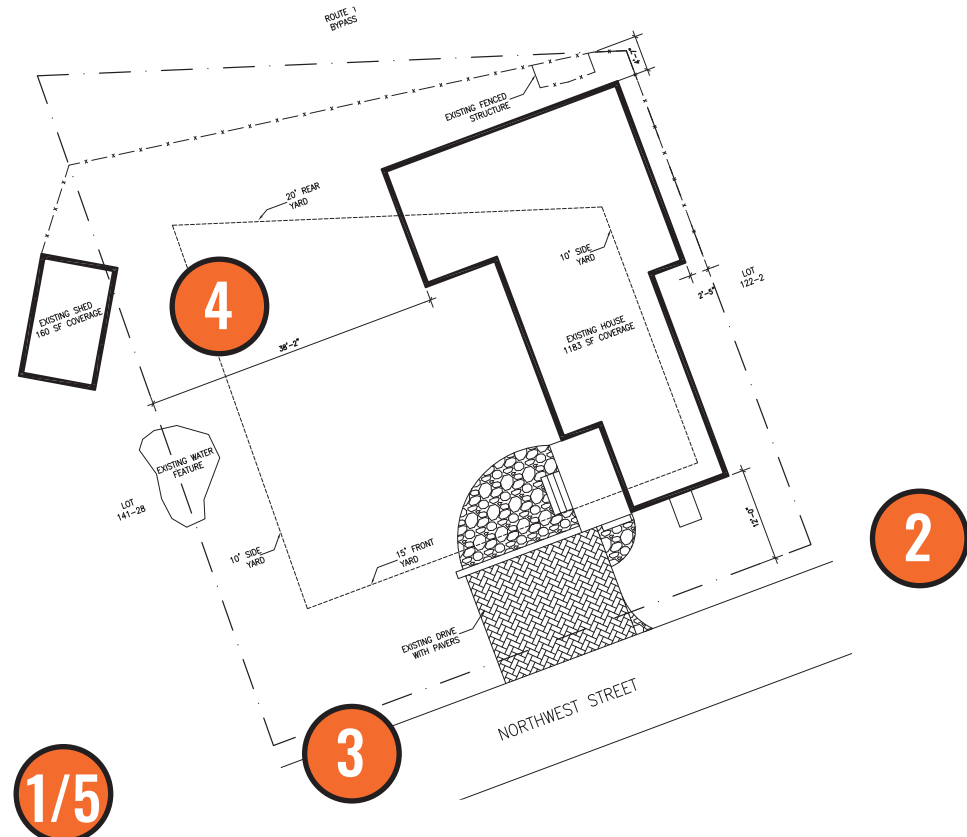
3 WEST FACADE



4 SOUTH FACADE



5 NORTH FACADE



1 SOUTH FACADE FROM ADJACENT YARD



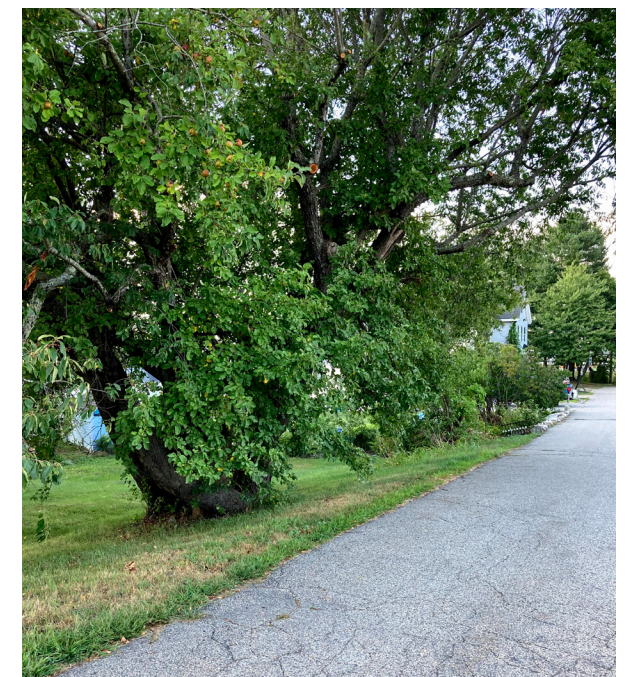
2 NORTHEAST CORNER FROM STREET



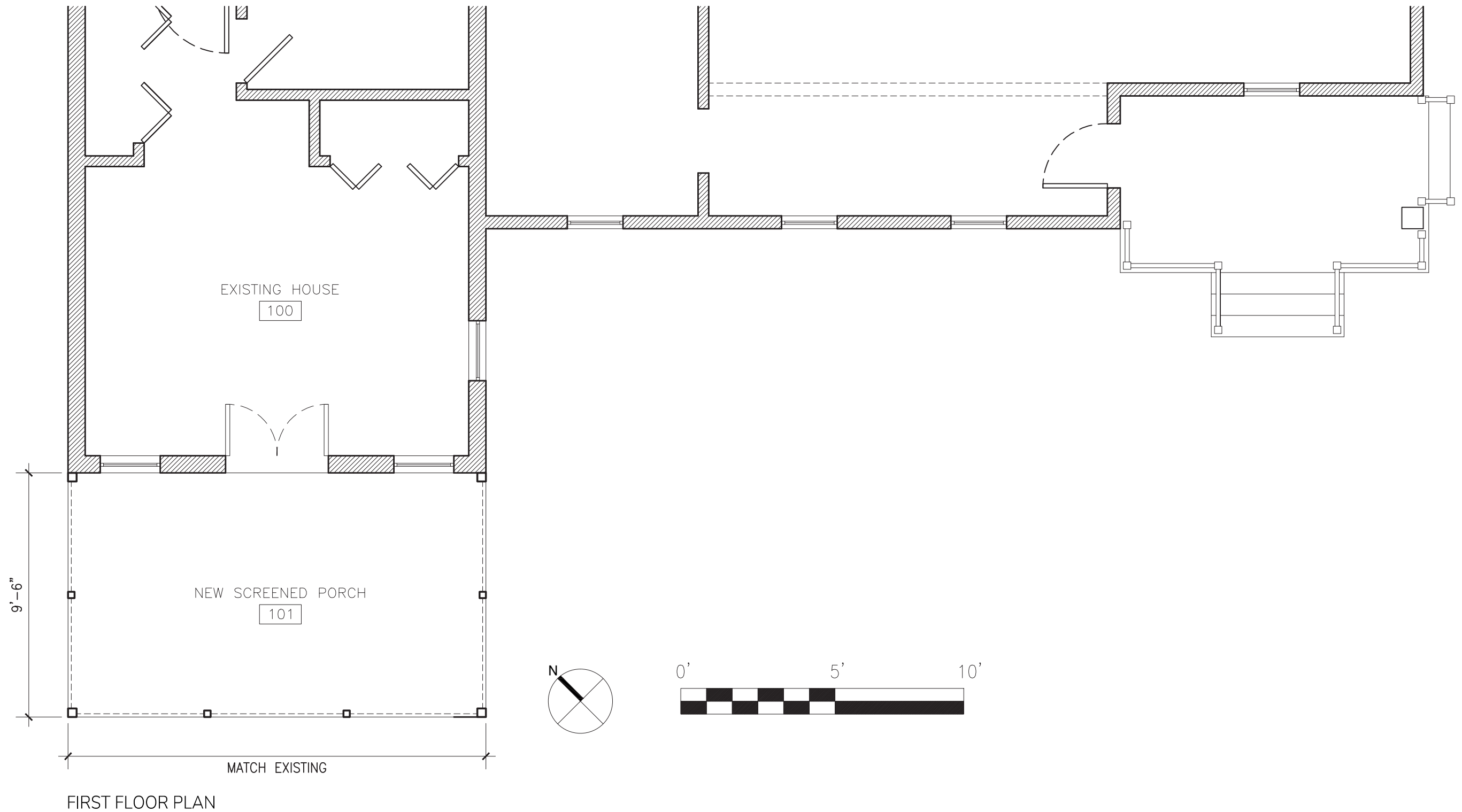
3 SOUTHEAST CORNER FROM STREET



4 SOUTH EAST CORNER FROM YARD

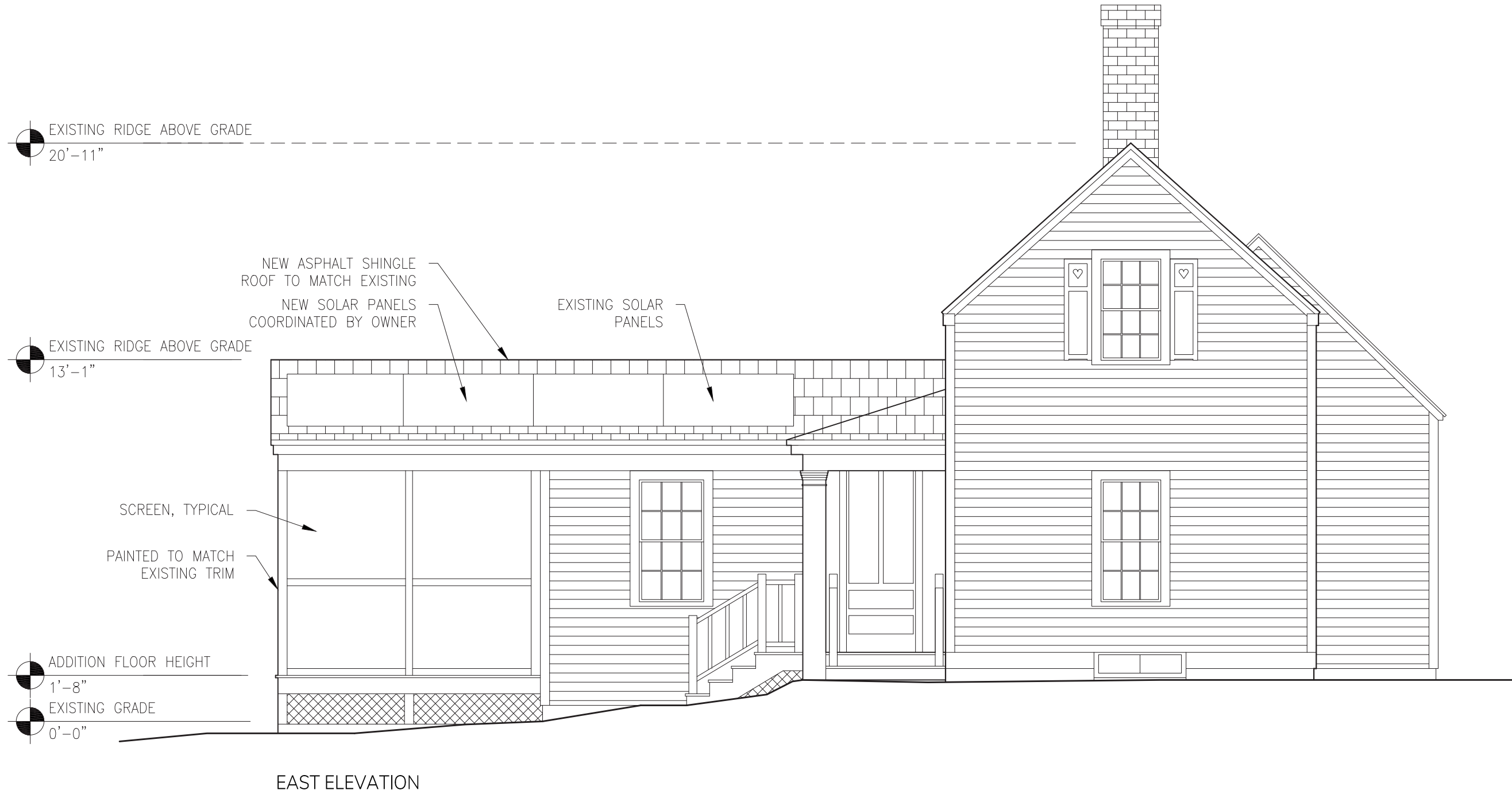


5 SOUTHEAST CORNER FROM STREET



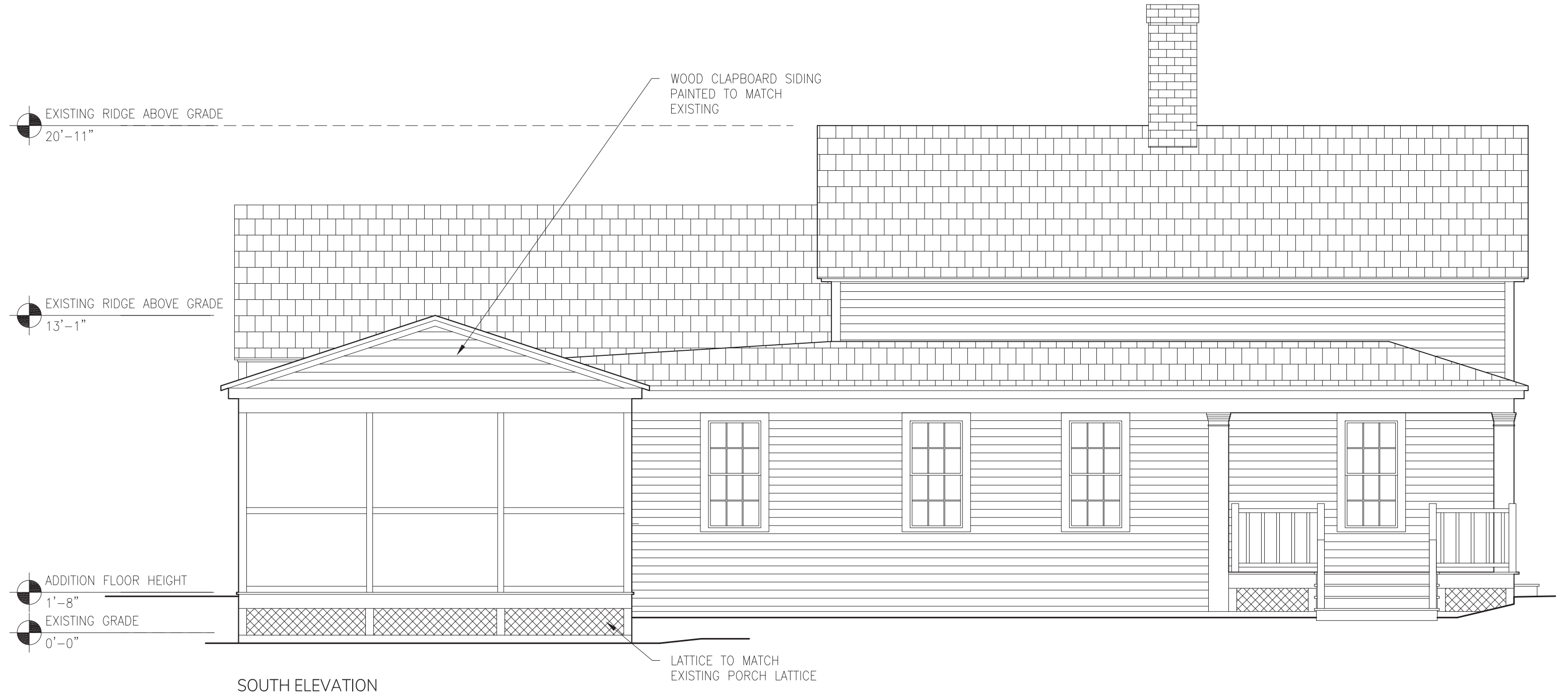
PROPOSED ELEVATIONS

SCALE: 3/16"=1'-0"



PROPOSED ELEVATIONS

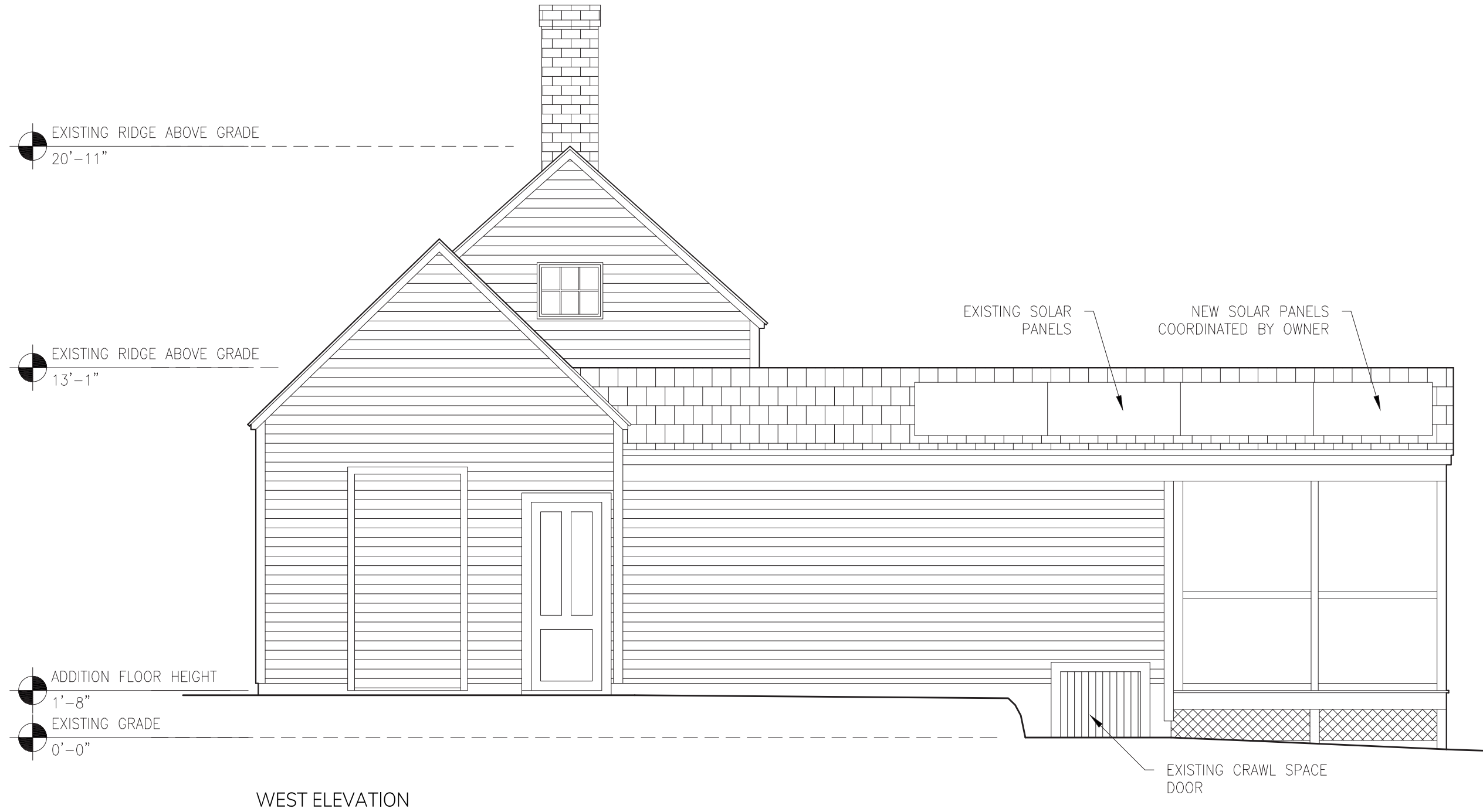
SCALE: 3/16"=1'-0"



121 NORTHWEST STREET
PORTSMOUTH, NH

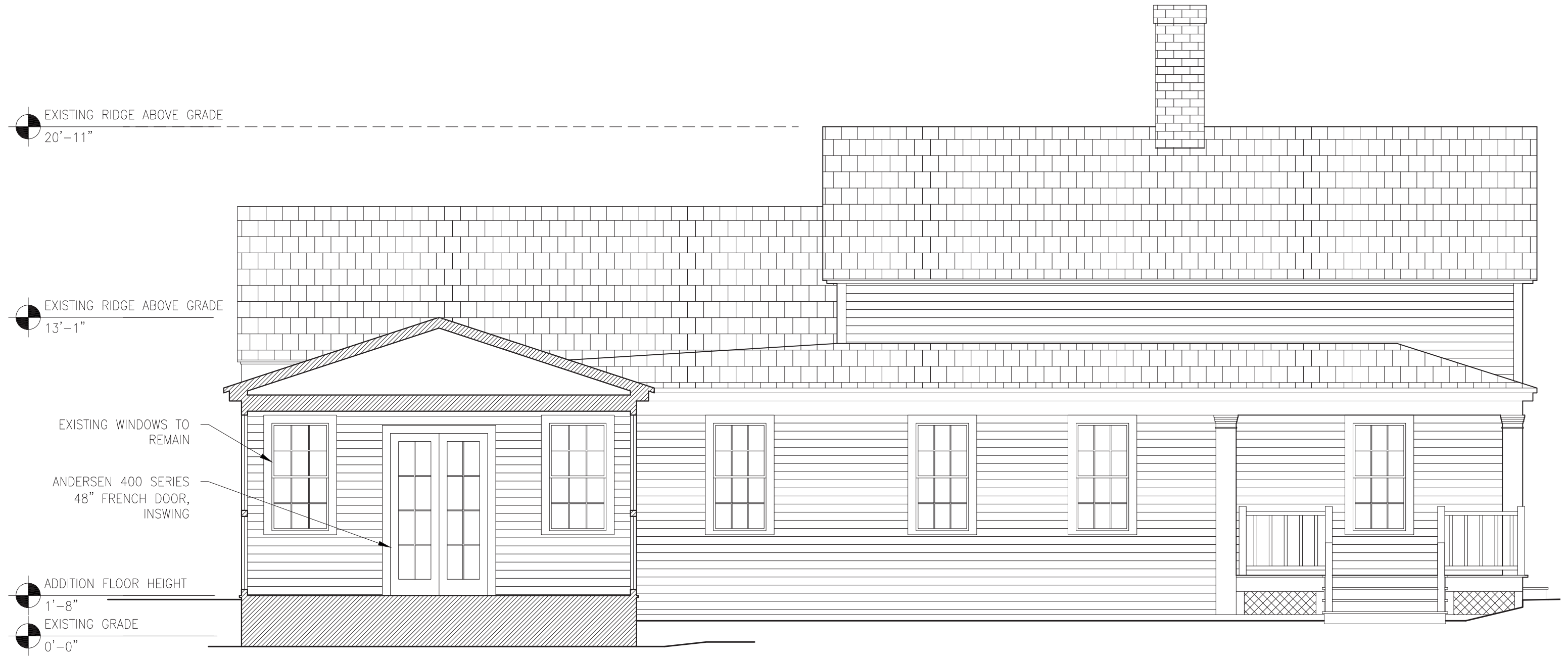
PROPOSED ELEVATIONS

SCALE: 3/16"=1'-0"



PROPOSED SECTION

SCALE: 1/4"=1'-0"



ADDITION SECTION

PROPOSED DOORS AT NEW CONSTRUCTION



400 SERIES FRENCHWOOD® HINGED PATIO DOOR

GLASS OPTIONS

All patio doors feature tempered glass.

- Low-E4® glass
- Low-E4 glass with HeatLock® Technology
- Low-E4 Sun glass
- Low-E4 SmartSun™ glass
- Low-E4 SmartSun glass with HeatLock Technology

- Virtually maintenance-free
- Perma-Shield® exteriors are low maintenance and never need painting
- Frame exterior is protected by a tough vinyl cover that resists dents and repels water and provides long-lasting protection
- Weather-resistant construction for greater comfort and energy efficiency
- Weatherstrip is designed to help seal out drafts, wind and water
- Frenchwood® gliding patio doors feature adjustable ball-bearing rollers provide smooth, long-lasting gliding operation
- Frenchwood hinged patio doors feature adjustable hinges for long-lasting performance
- Add style with grilles, exterior trim, art glass or patterned glass



EXISTING WINDOWS TO REMAIN



400 SERIES DOUBLE-HUNG WINDOW

GLASS OPTIONS

- Low-E4® glass
- Low-E4 glass with HeatLock® Technology
- Low-E4 Sun glass
- Low-E4 SmartSun™ glass
- Low-E4 SmartSun glass with HeatLock Technology

- Virtually maintenance-free
- Perma-Shield® exteriors never need painting and won't peel, blister, flake or corrode*
- Frame exterior is protected by a tough vinyl cover that resists dents and repels water and provides long-lasting protection
- Weather-resistant construction for greater comfort and energy efficiency
- Weatherstripping is designed to seal out drafts, wind and water
- Add style with grilles, exterior trim, art glass or patterned glass
- Available with Stormwatch® Protection for coastal areas

