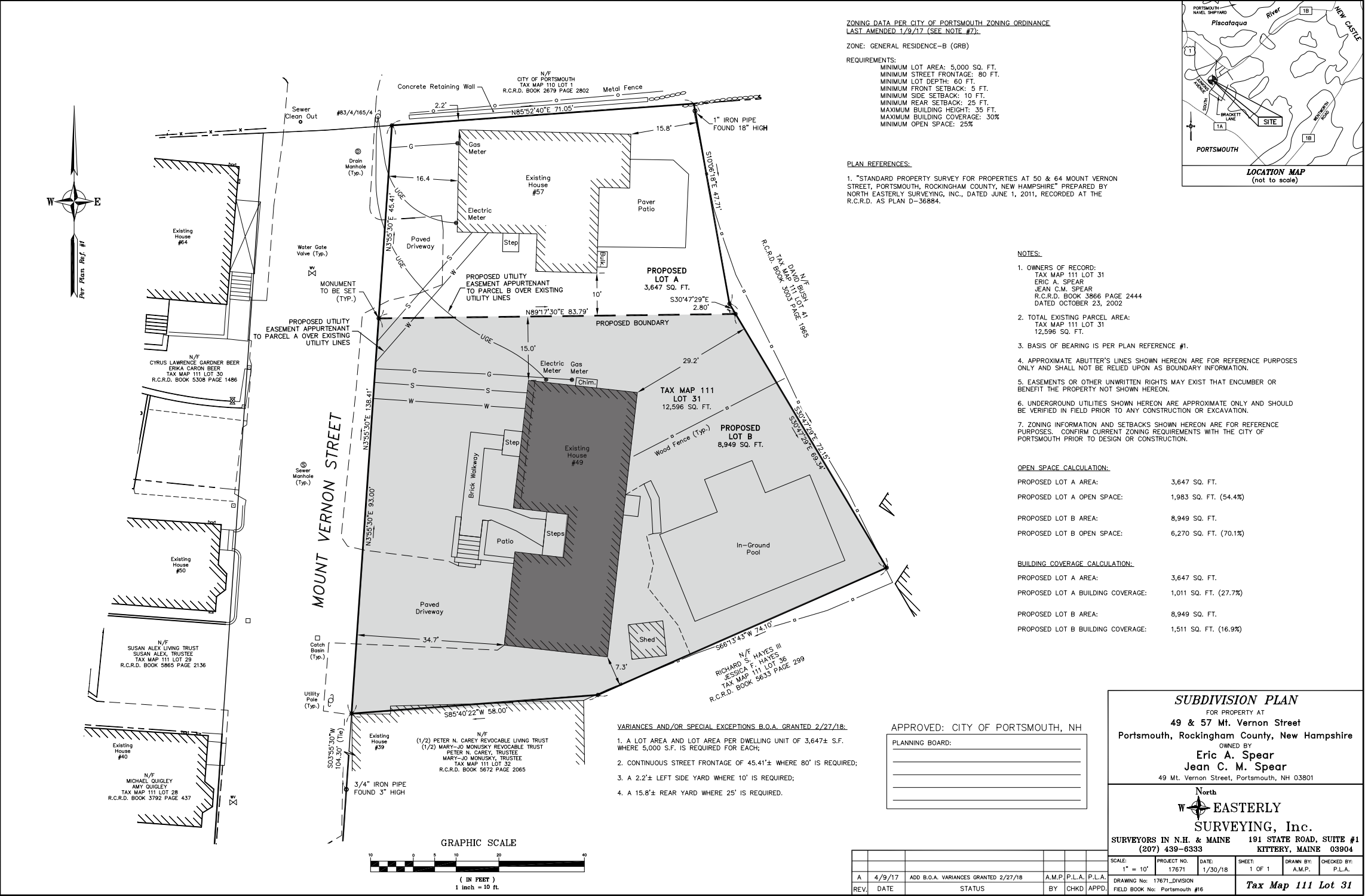


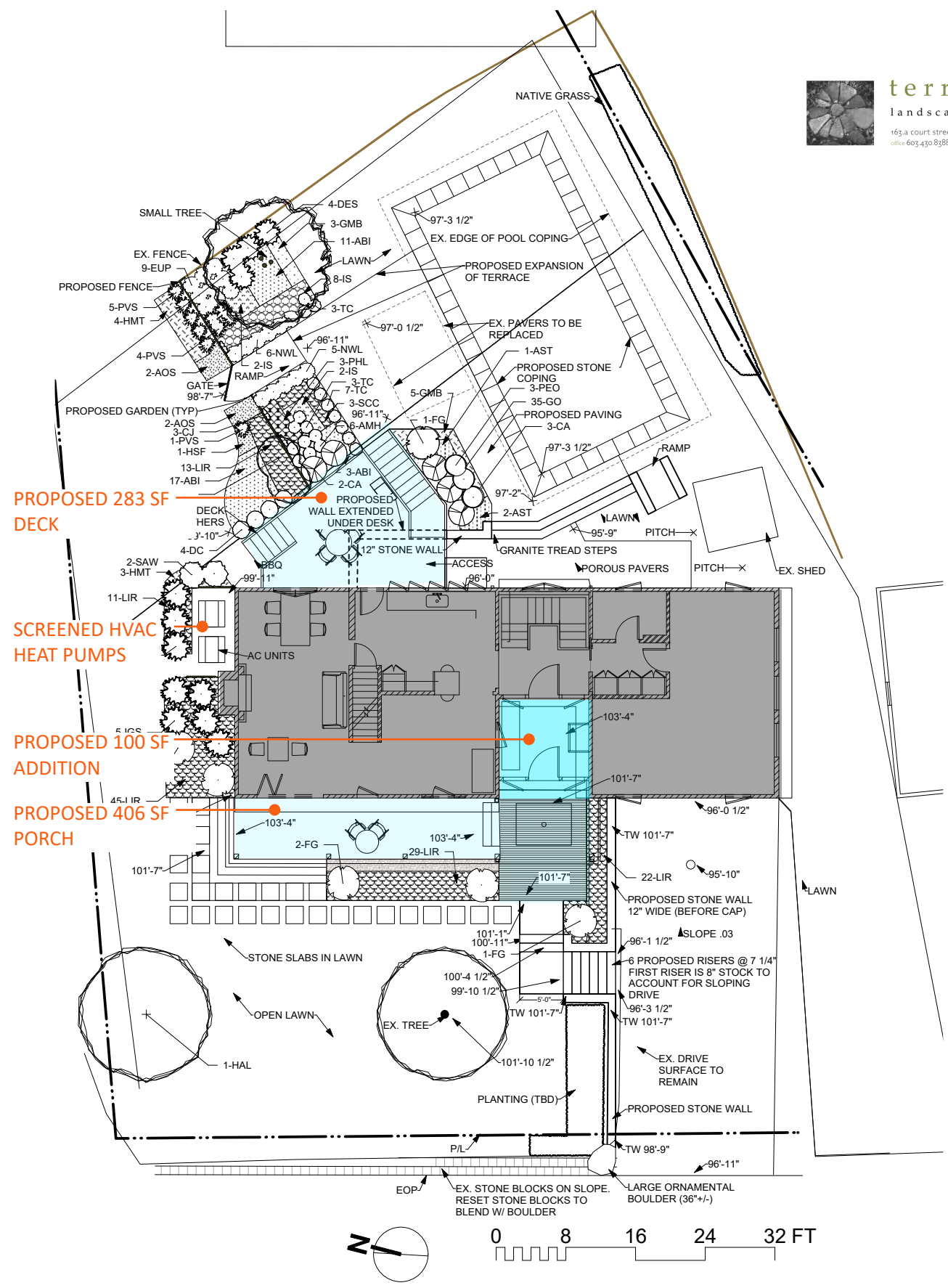
# 49 Mount Vernon Street

CITY OF PORTSMOUTH  
Historic District  
Commission  
Hearing  
March 4, 2020



EXISTING SITE PLAN

49 Mount Vernon Street  
Historic District Commission Hearing  
March 4, 2020



SITE & LANDSCAPE PLAN  
SCALE 1/16"=1'-0"

49 Mount Vernon Street  
Historic District Commission Hearing  
March 4, 2020







WEST FACADE



WEST FACADE



SOUTH AND WEST FACADES



NORTH FACADE



SOUTH FACADE



EAST FACADE

VIEWS OF EXISTING HOUSE

49 Mount Vernon Street  
Historic District Commission Hearing  
March 4, 2020

Placework





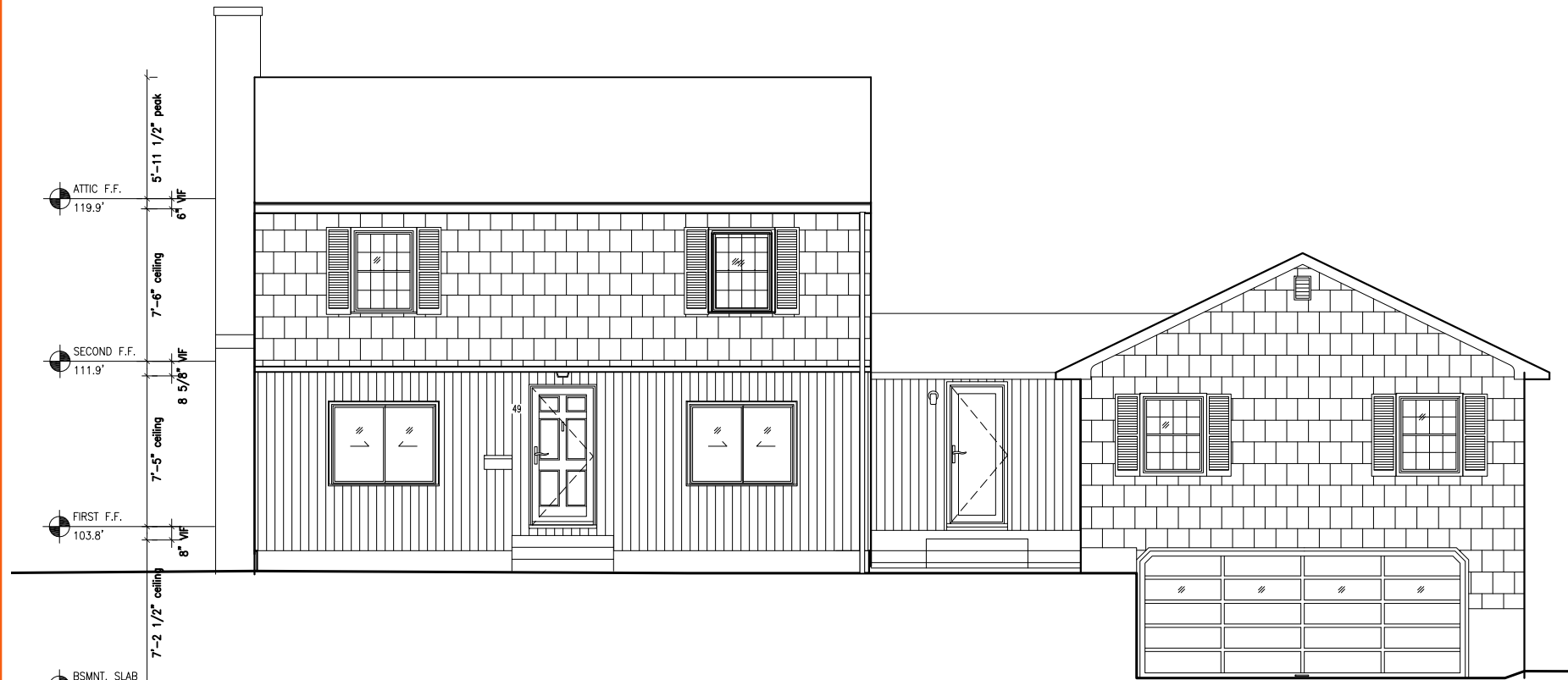
# Mount Vernon Street



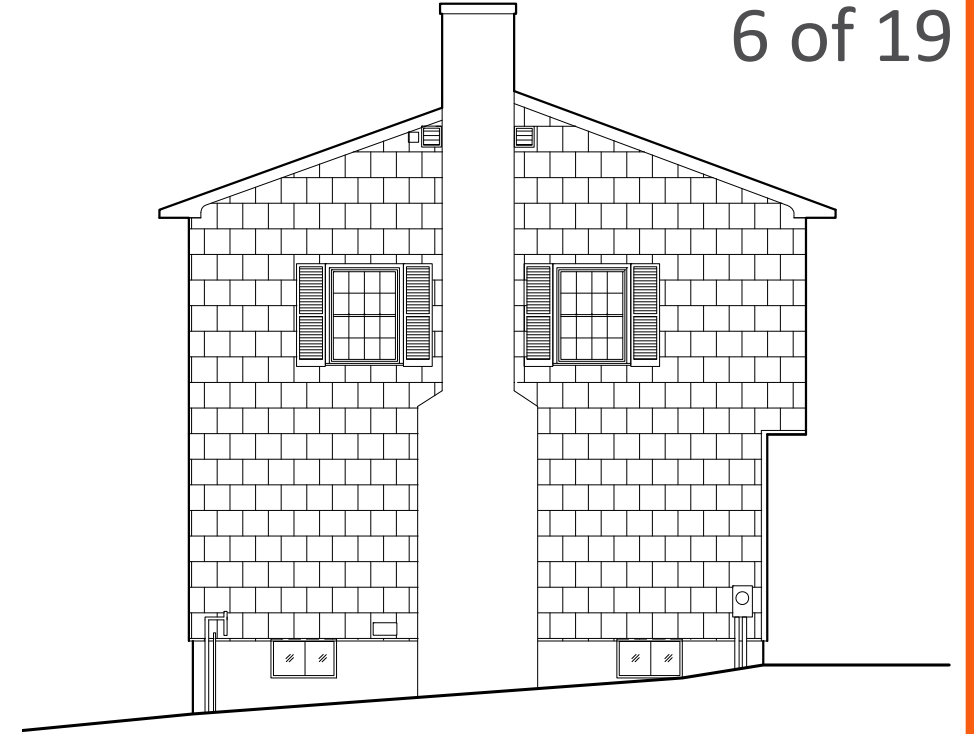
NEIGHBORHOOD CONTEXT PHOTOS  
MOUNT VERNON STREET

49 Mount Vernon Street  
Historic District Commission Hearing  
March 4, 2020

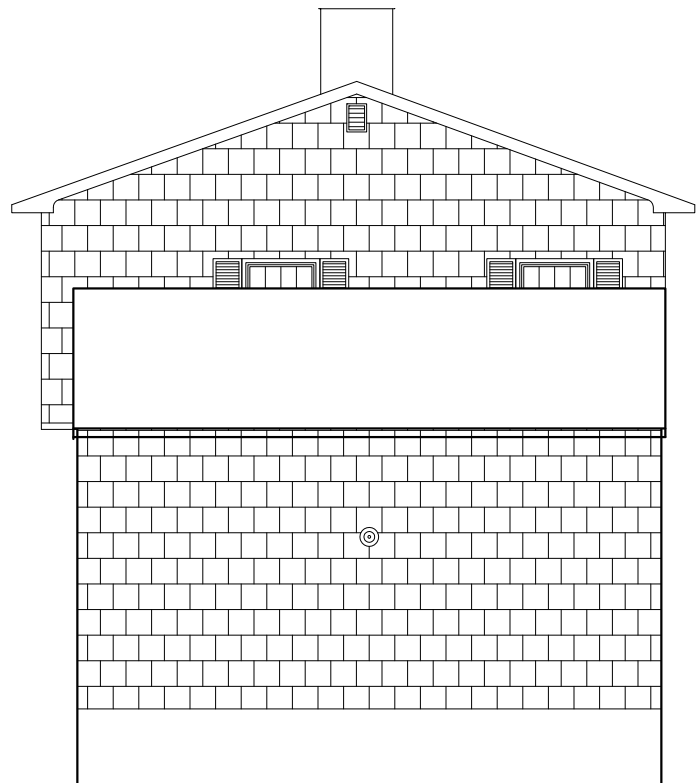




WEST (STREET) FACADE



NORTH FACADE



SOUTH FACADE



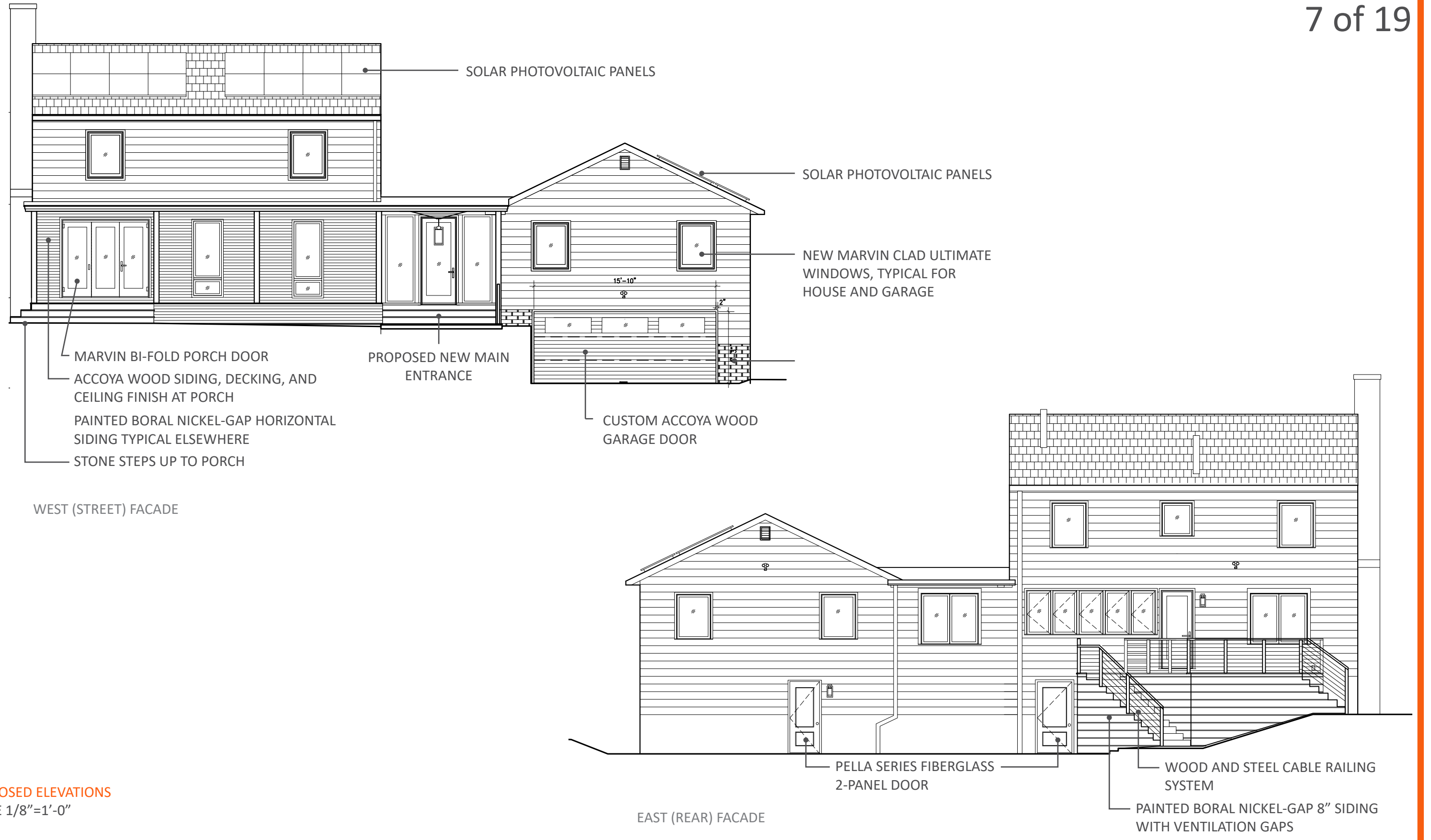
EAST FACADE

EXISTING ELEVATIONS  
SCALE 1/8"=1'-0"

49 Mount Vernon Street  
Historic District Commission Hearing  
March 4, 2020

Placework



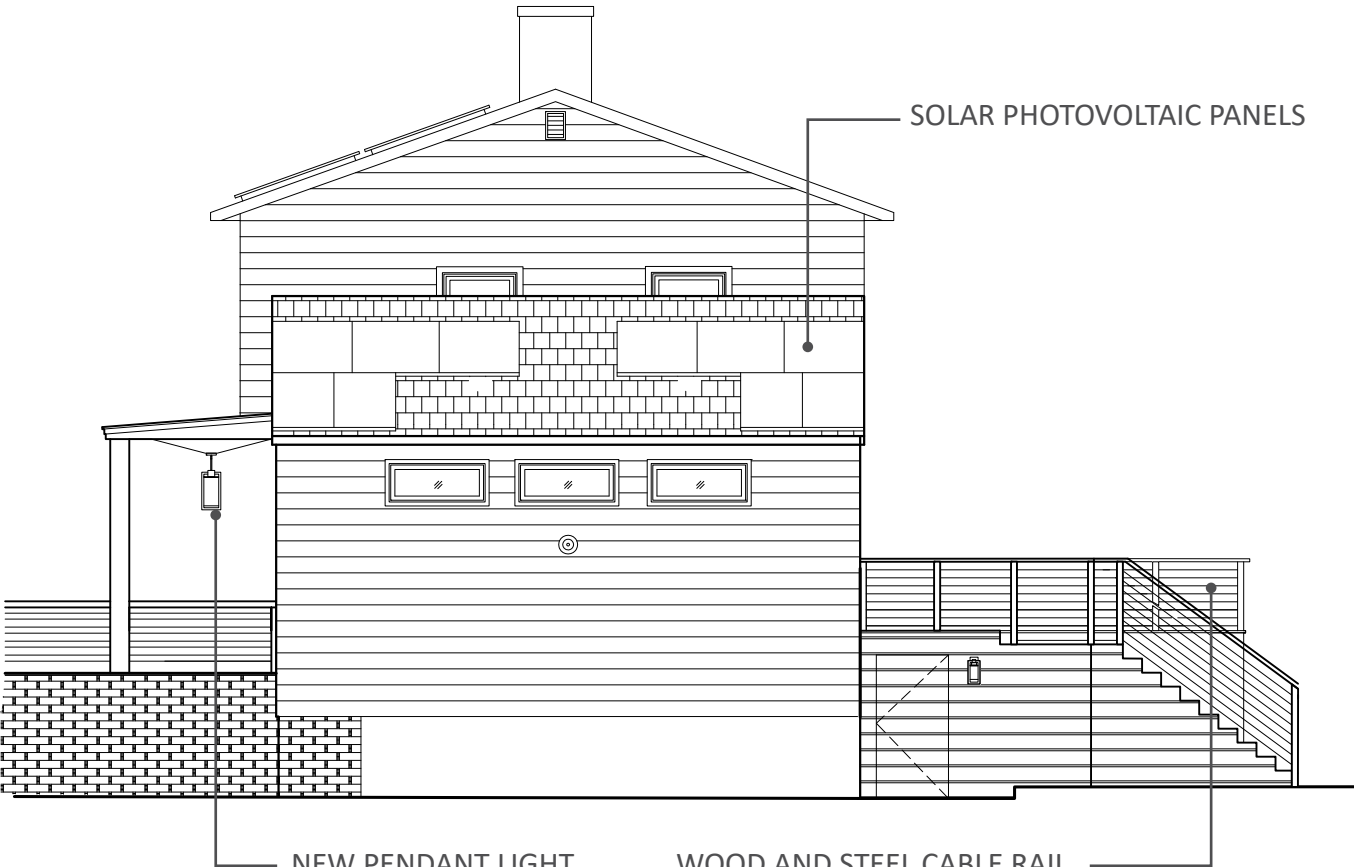


PROPOSED ELEVATIONS  
SCALE 1/8"=1'-0"

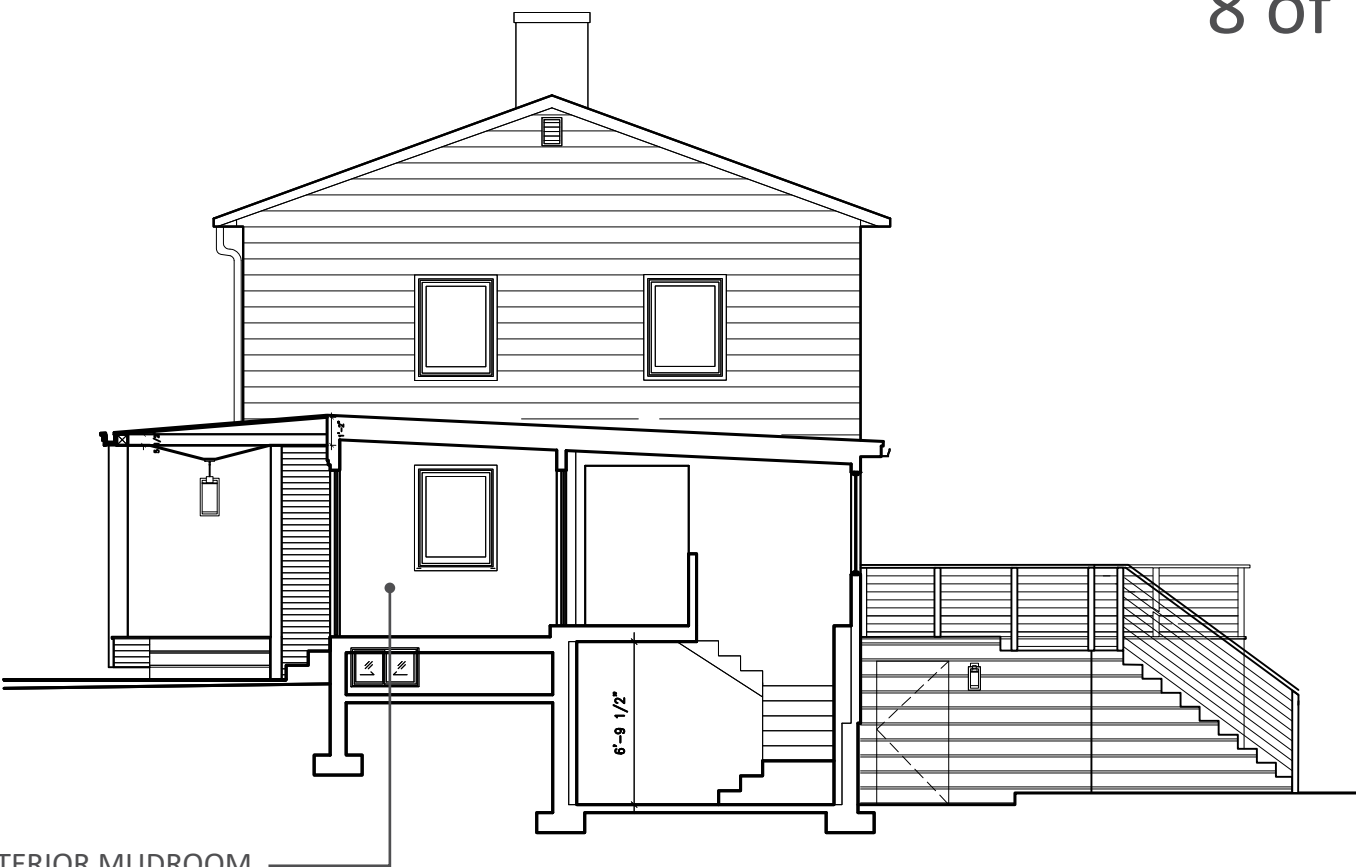
49 Mount Vernon Street  
Historic District Commission Hearing  
March 4, 2020

Placework





SOUTH FACADE



SECTION

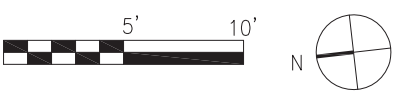
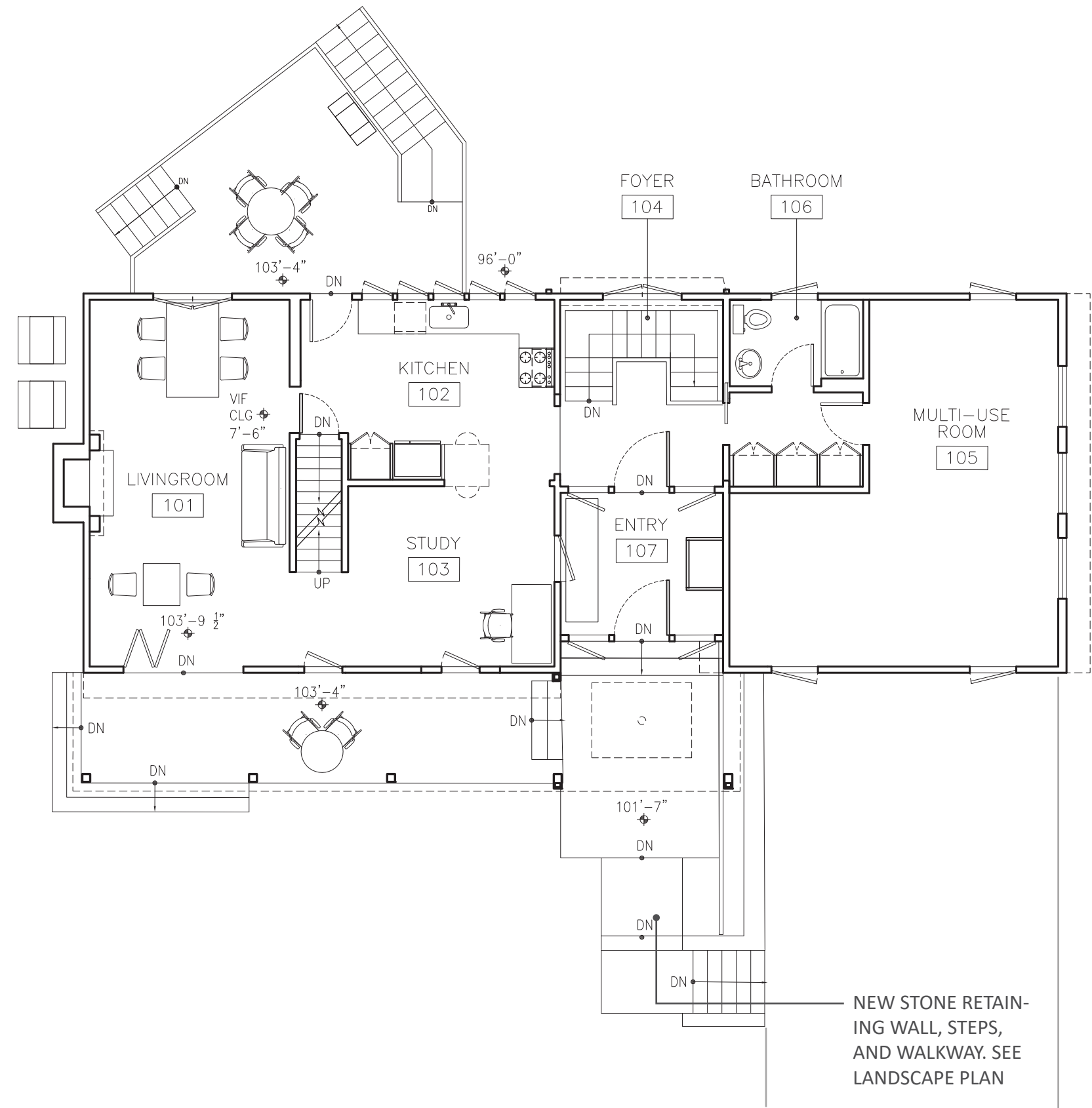


NORTH FACADE

PROPOSED ELEVATIONS  
SCALE 1/8"=1'-0"

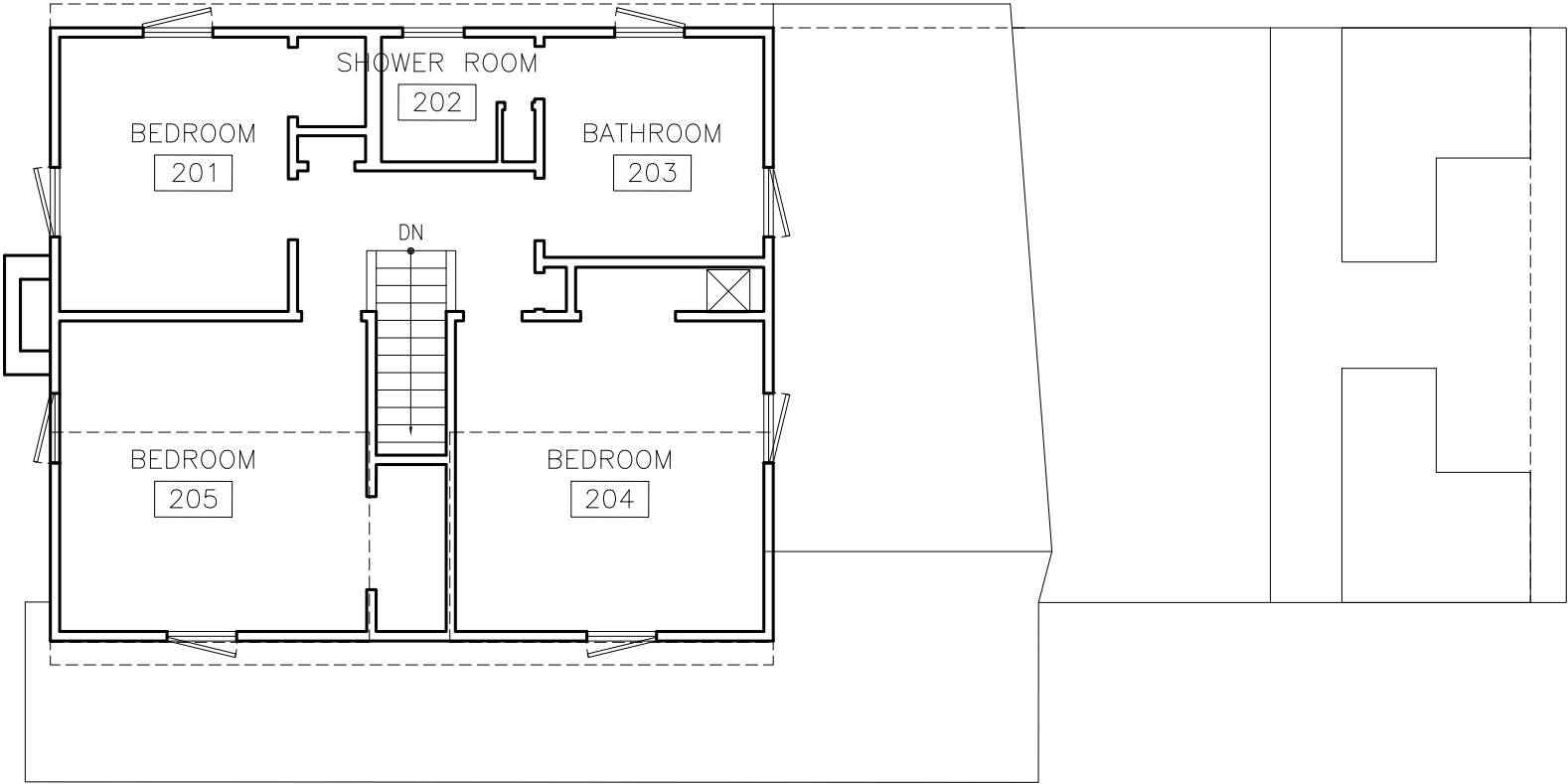
49 Mount Vernon Street  
Historic District Commission Hearing  
March 4, 2020



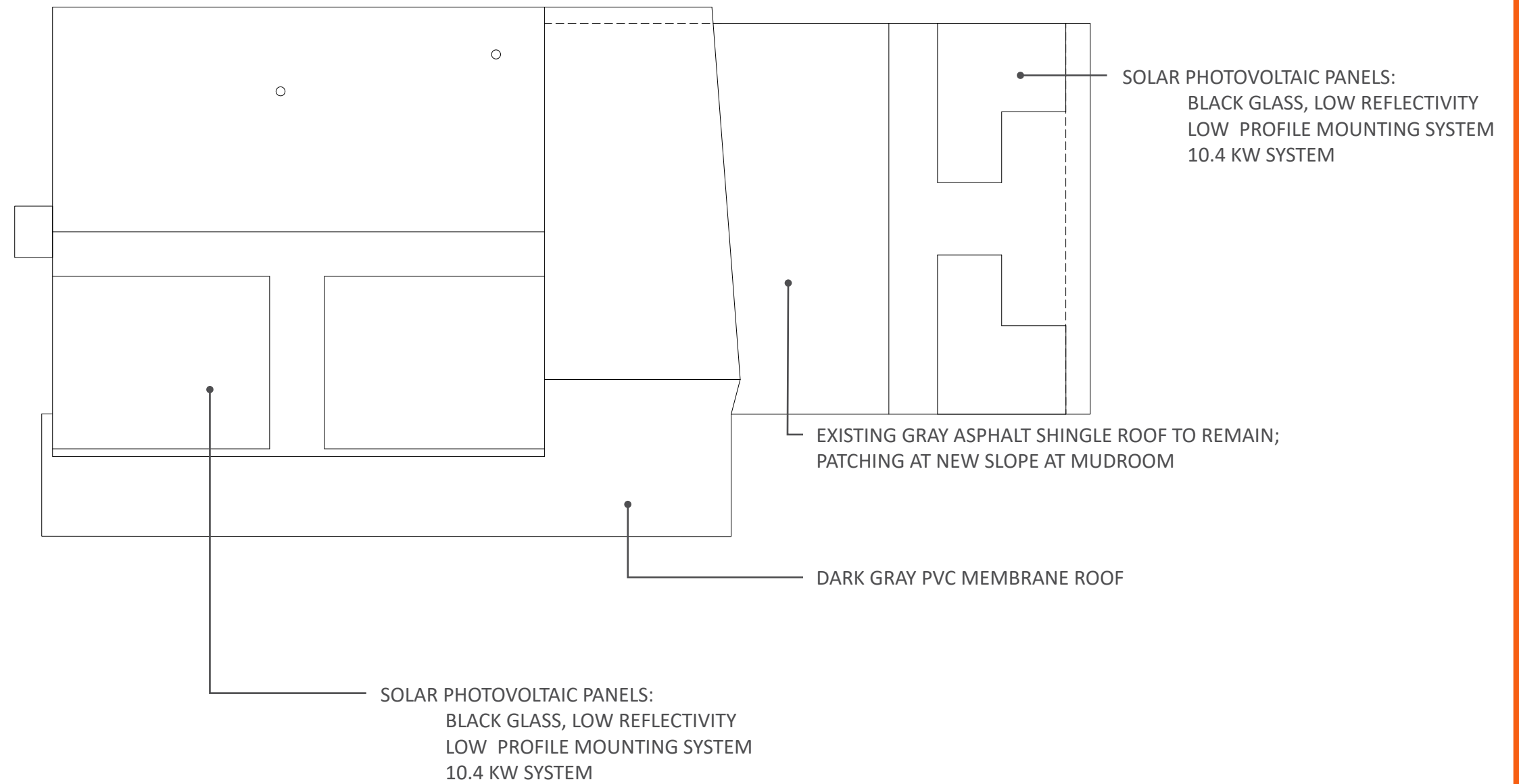


PROPOSED PLAN: FIRST FLOOR  
SCALE: 1/8"=1'-0"

49 Mount Vernon Street  
Historic District Commission Hearing  
March 4, 2020







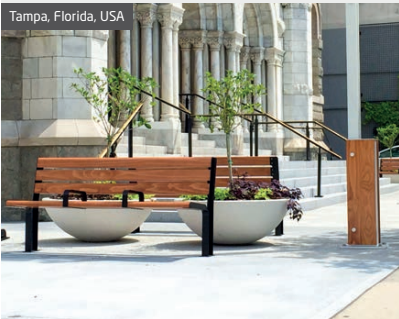


2 1/2" wide Decking  
2 1/2" wide Nickel Gap tongue and groove profile siding/ceiling finished with transparent stain.  
3" accoya trim board at edges.

Standard Lengths  
94.5", 118.1", 141.7", 165.4", 189.0"

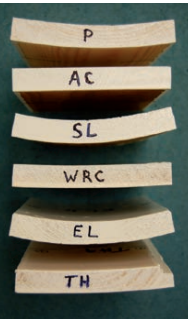
Stability & Durability  
Accoya® wood offers unsurpassed dimension stability and durability. Approved for use in UC3A, UC3B & UC4A categories per AWPA U1, this includes exterior above ground AND ground contact.

Processing  
Processing does not affect the unique properties of Accoya® wood, as it is modified throughout and not leachable. It is easy to process and can be compared to profiling a soft wood species. No special tools are required for cross cutting, ripping, planning, routing and drilling. Sanding before finishing is rarely required.

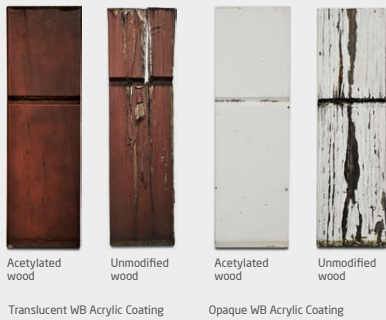


### TRADA SIDING TEST

Accoya® wood (AC) was the only wood that did not cup in this TRADA trial on wooden siding.



### COATING COMPARISON AFTER 13 YEARS OUTDOOR EXPOSURE



### CONTACT US

USA  
5000 Quorum Drive #620  
Dallas, Texas 75254  
T: +1 972 233 6565

ACCSYS GROUP

www.accoya.com



© Accsys Technologies July 2016. Accoya® and the Trimark Device are registered trademarks owned by Titan Wood Limited, a wholly owned subsidiary of Accsys Technologies PLC, and may not be used or reproduced without written permission. To the best of the knowledge and belief of Titan Wood Limited the information contained in this document is in accordance with the facts and is provided on the basis that Titan Wood Limited and/or any of its affiliates, officers, employees or advisers are not liable for any loss or damage whatsoever in respect of the accuracy or completeness of such information or the result of having acted upon it.

## Boral siding by TruExterior

8" Nickel Gap tongue and groove profile. Painted.  
Mitered corners.



### The Popular Look Of Nickel Gap For Inside Or Out

The Nickel Gap profile interlocks with a tongue-and-groove and is self-gapping, creating a consistent nickel-sized space between each board. Use it for interior or exterior applications for a trendy, yet timeless look.

- Durable, poly-ash material resists moisture and bugs
- Virtually no expansion or contraction due to temperature or moisture changes
- Comes pre-primed and ready for paint
- No edge sealing of cuts required
- Suitable for ground contact
- Available in 16' lengths



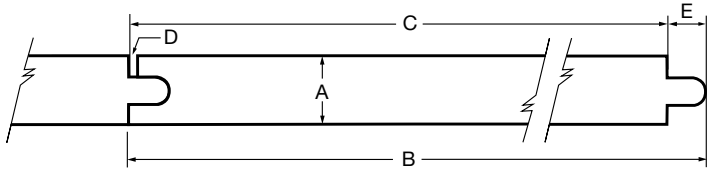
### NICKEL GAP

The tongue-and-groove profile is self-gapping, creating a consistent nickel-sized space between each board.

### Available Finish:



Nominal Size	Actual Thickness (A)	Actual Width (B)	Reveal (C)	Gap (D)	Tongue (E)
1 x 4	0.6875"	3.50"	3.159"	0.08"	0.341"
1 x 6	0.6875"	5.50"	5.159"	0.08"	0.341"
1 x 8	0.6875"	7.25"	6.909"	0.08"	0.341"
1 x 10	0.6875"	9.25"	8.909"	0.08"	0.341"



MATERIALS & PRODUCTS  
EXTERIOR SIDING

49 Mount Vernon Street  
Historic District Commission Hearing  
March 4, 2020

Placework



PELLA SERIES FIBERGLASS ENTRY DOORS AT  
BASEMENT AND GARAGE (REAR OF HOUSE)



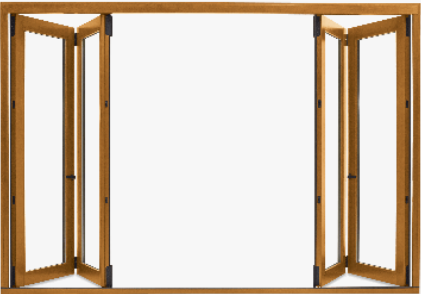
# European 2 Panel Entry Door Solid Panel

Pella®

## Features

- Durable, low-maintenance fiberglass.
- PerformaSeal™ weathertight seal technology.
- AdvantagePlus™ optional low-maintenance protection system.
- Optional multipoint lock system for added security.
- VividGrain™ stain process provides the authentic appearance of wood.
- Optional built-in Insynctive® security sensor.

MARVIN ULTIMATE BI-FOLD DOOR AND  
SWINGING FRENCH DOOR



INTERIOR

EXTERIOR

## Features of the Ultimate Bi-Fold Door

- Choose from 81 operating configurations
- Available in heights up to 10 feet or widths up to 55 feet
- Individual panel sizes available up to 3.5 feet wide by 9.5 feet high
- Optional single swinging active access door panel allows for convenient everyday use
- Integrated multi-point hardware system at folding panels for smooth and effortless operation
- Contemporary hardware for a sleek and simple aesthetic
- Retractable screen available in widths up to 24 feet is nearly invisible when not in use
- Hidden Lock Status Sensor option connects with your smart home to indicate when door is closed and locked
- Performance and high-performance sills available, along with a low-profile, flush universal design sill for accessibility

## Features of the Ultimate Swinging French Door

- Available in heights up to 9 feet or widths up to 14 feet
- Choose a Traditional panel aesthetic with a 8" bottom rail or for a Contemporary look and more daylight opening, select a 4 ¾" bottom rail
- Integrated, concealed multi-point lock offers security and a tight seal with no visible components
- Handles available in a wide range of styles from traditional to contemporary
- Durable sill is engineered for years of energy-efficient and weathertight performance
- Unique multi-point lock offers security and a tight seal with no visible components
- Adjustable hinges for years of smooth operation
- Hidden Lock Status Sensor option connects with your smart home to indicate when door is closed and locked
- Available with IZ3 coastal/hurricane certification. IZ4 available for Ultimate Outswing French Door only.
- CE certified.



INTERIOR

EXTERIOR

MATERIALS & PRODUCTS  
EXTERIOR SIDING


49 Mount Vernon Street  
Historic District Commission Hearing  
March 4, 2020

Placework



MARVIN SIGNATURE ULTIMATE WINDOWS (ALUMINUM CLAD)

TYPICAL WINDOW IS A CASEMENT OR AWNING PUSH OUT WITH INTERIOR SCREEN. SEE PLANS FOR WINDOW SWINGS.



### Features of the Ultimate Casement Push Out Window

- Available in heights up to 8 feet or widths up to 3.5 feet
- Energy efficient even at the largest sizes
- Multi-point locking system ensures a tight seal and security from top to bottom
- Unique wash mode allows access to both sides of the glass from indoors
- CE certified

HANDISWAGE™ CABLE RAILING

The HandiSwage™ System is designed to allow hidden cable fastening utilizing innovative swage components.

OVERVIEW

GALLERY

SPECIFICATIONS & OPTIONS

RESOURCES & DOWNLOADS

REQUEST A QUOTE

FIND A DEALER

SPECIFICATIONS

Straight Sections

Atlantis Rail offers standard rail heights of 36" or 42" for straight sections.

Stair Sections

Rail height for stair sections is available in 36" only.

Note: Railing heights are offered in these dimensions due to nationwide building codes. However, Atlantis Rail can supply custom heights/lengths upon request.

Between Posts Length

Atlantis Rail recommends staying within 4' section lengths to maintain structural integrity. If section lengths exceed 4', Atlantis Rail offers a Cable Stabilizer Kit to minimize cable deflection.

Cable Spacing

The cable is spaced on posts at 3" on-center to comply with nationwide building

OPTIONAL COMPONENTS

Vinyl Post Components

White vinyl sleeves, fitting over a 4x4 post, are available in lengths of 48". Cut post sleeves to appropriate application height. Colonial style white vinyl post cap and base are also available as railing add-ons.

Micro Star™ Lighting

Micro Star™ LED lights can be integrated into the top rail for sublet illumination. Also, the Micro Star™ LED Post Cap fits over standard 4x4 vinyl sleeves and provides sufficient lighting for stairs and walkways.



MATERIALS & PRODUCTS  
WOOD AND STEEL CABLE RAILING SYSTEM

49 Mount Vernon Street  
Historic District Commission Hearing  
March 4, 2020



TYPE A  
24" BOLLARD

Model	Height	Watts	Delivered lumens	LED lumens	CRI	Color °T	Voltage
LEDPATH003D-24	24"	7 W	180 lm	700 lm	90	3000 K	120 V
LEDPATH003D-30	30"	7 W	180 lm	700 lm	90	3000 K	120 V
LEDPATH003D-36	36"	7 W	180 lm	700 lm	90	3000 K	120 V

**Specifications**

Over 50,000 hours of service life  
"X" shaped lighting pattern  
Low power consumption  
120 V AC direct connection  
Available in total height of: 24, 30 and 36"  
Superior color consistency  
Integrated dimmable driver  
Anchor bolts included

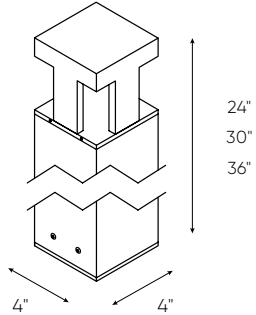
**Finish**

**BK** Black

**Order example**

**LEDPATH003D-36-BK**  
Dimmable LEDPATH003D LED Bollard with a total height of 36" in a black finish

**LEDPATH003D**





TYPE B  
STEP LIGHT

Model	Watts	Delivered lumens	LED lumens	CRI	Color °T	Voltage
LEDSTEP005D	3 W	100 lm	285 lm	80	3000 K	120 V

**Specifications**

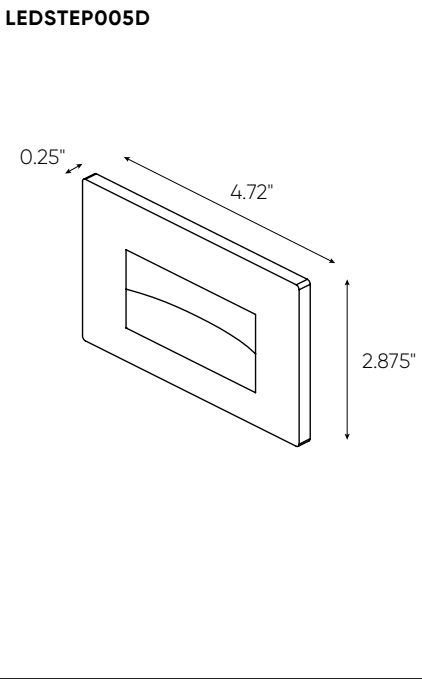
Over 50,000 hours of service life  
Warm white light output  
Optimized light spread  
Low power consumption  
120 V AC direct connection  
Excellent color rendering  
Superior light color consistency  
Aesthetic profile  
Die-cast aluminum housing  
120 V dimmable solution  
Dimmable

**Finish**

**BK** Black  
**BZ** Bronze  
**SG** Silver grey  
**WH** White

**Order example**

**LEDSTEP005D-WH**  
Dimmable LEDSTEP005D step light in a white finish




MATERIALS & PRODUCTS  
EXTERIOR LIGHT FIXTURES

49 Mount Vernon Street  
Historic District Commission Hearing  
March 4, 2020






Placework

TYPE C  
WALL MOUNTED SPOTLIGHT



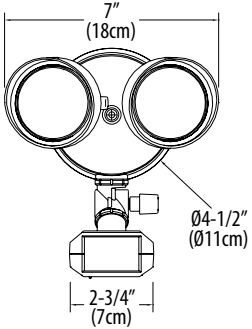
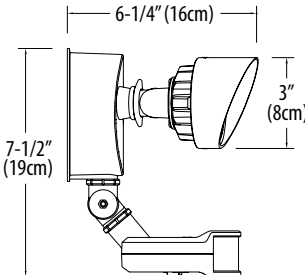
## OLF

LED Security Floodlight with Motion Sensor



**Specifications**

Width:	7.00" (17.8 cm)
Height:	7.5" (19.1 cm)
Depth:	6.25" (15.9 cm)
Weight:	1.5 lbs. (0.68 kg)
Lumen Output:	2,160
Input Power:	25W
Efficacy:	86 Lumens per Watt
Input volage:	120V



Catalog Number

Notes

Type

Hit the Tab key or mouse over the page to see all interactive elements.

### Introduction

The OLF LED security floodlight combines energyefficient LEDs with motion sensing (or occupancy sensing) technology. OLF motion response feature includes 180 degree range, 70 feet forward detection, sensitivity adjustment switch and a test / time switch to adjust the duration to stay illuminated when motion is detected.

OLF 2RH contains two round heads delivering 2,160 lumens using only 25W power. OLF 2RH replaces up to two 90W PAR incandescent lamps and saves 86% energy. A built-in photocell prevents daylight operation, and reduces energy costs further. OLF family is the ideal solution for residential and commercial security floodlighting applications.

### Ordering Information

EXAMPLE: OLF 2RH 40K 120 MO DDB

OLF					
Series	Number of heads	Color Temperature <sup>1</sup>	Voltage	Control	Finish
OLF	2RH 2 heads, round	40K 4000K <sup>1</sup>	120 120 volts	MO PIR motion detection with photocell	DDB Dark Bronze WH White

Complete list of configurations available:

OLF 2RH 40K 120 MO DDB  
OLF 2RH 40K 120 MO WH

NOTES

1. Correlated color temperature (CCT) shown is nominal per ANSI C78, 377-2008.

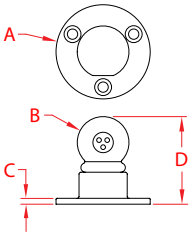
2. LED lifespan based on IESNA LM-80-08 results and calculated per IESNA TM-21-11 methodology.

MATERIALS & PRODUCTS  
EXTERIOR LIGHT FIXTURES

49 Mount Vernon Street  
Historic District Commission Hearing  
March 4, 2020

TYPE D  
DECK ACCENT MICRO-LIGHTS

TRI STAR SURFACE MOUNT LIGHT  
HOUSING: 316 STAINLESS



ITEM	A	B	C	D	COLOR	FAST.	WT
	(size)						(lb)
12 VOLT DC S0803-1000	1-1/8"	2.00"	0.13"	1.86"	white	#8	0.40
CAUTION: USE DC TRANSFORMER ONLY							
NOTE: Self-contained ball housing with 3 LED lights. Mounts to surfaces using 3, #8 screws. Ideal for mounting to railing posts for surface illumination. Use with the low voltage transformer (Micro Star™ Transformer) and wiring.							

ATLANTIS  
RAIL SYSTEMS  
70 Armstrong Road  
Plymouth, MA 02360

(800) 541-6829  
info@atlantisrail.com  
www.atlantisrail.com



Made in USA



Import



Drop Forged



Precision Cast



Precision Machined



Stamped



Wire Formed



Electro-Polished



New Product





PRODUCT DETAILS:

- This stem hung fixture may be hung on a sloped ceiling.
- This fixture includes multiple down stems in various lengths to customize the installation height, including one 6" stem and two 12" stems.
- Suitable for use in damp (interior moist and outdoor no direct rain or sprinkler) locations as defined by NEC and CEC. Meets United States UL Underwriters Laboratories & CSA Canadian Standards Association Product Safety Standards
- 2 year finish warranty
- Sophisticated and streamlined design, durable construction and timeless finish complement any architectural style
- Warm rich light bronze tone

COLFAX

2922BZ

LARGE HANGING LANTERN

The sleek lines of Colfax feature intersecting planes of solid aluminum and a chic cylinder of etched opal glass to create a sophisticated geometric form. The die cast aluminum construction in a Bronze finish brings an Arts & Crafts flair to the transitional design.

DETAILS	
FINISH:	Bronze
MATERIAL:	Aluminum
GLASS:	Etched Opal

DIMENSIONS	
WIDTH:	9.5"
HEIGHT:	18.8"
WEIGHT:	9.5 lbs.

LIGHT SOURCE	
LIGHT SOURCE:	Socket
WATTAGE:	1-100w Med.
VOLTAGE:	120v

MOUNTING	
CANOPY:	5" Dia.
LEAD WIRE:	120"
MAX HEIGHT:	60.3"

SHIPPING	
CARTON LENGTH:	15.5"
CARTON WIDTH:	12"
CARTON HEIGHT:	21.5"
CARTON WEIGHT:	12 lbs.



PRODUCT DETAILS:

- Suitable for use in wet (interior direct splash and outdoor direct rain or sprinkler) locations as defined by NEC and CEC. Meets United States UL Underwriters Laboratories & CSA Canadian Standards Association Product Safety Standards
- 2 year finish warranty
- Sophisticated and streamlined design, durable construction and timeless finish complement any architectural style
- Warm rich light bronze tone

COLFAX

2920BZ

SMALL WALL MOUNT LANTERN

The sleek lines of Colfax feature intersecting planes of solid aluminum and a chic cylinder of etched opal glass to create a sophisticated geometric form. The die cast aluminum construction in a Bronze finish brings an Arts & Crafts flair to the transitional design.

DETAILS	
FINISH:	Bronze
MATERIAL:	Aluminum
GLASS:	Etched Opal

DIMENSIONS	
WIDTH:	6"
HEIGHT:	12.3"
WEIGHT:	3 lbs.
BACK PLATE:	4.5"W X 8.25"H
EXTENSION:	6.8"
TOP TO OUTLET:	4.3"

LIGHT SOURCE	
LIGHT SOURCE:	Socket
WATTAGE:	1-100w Med.
VOLTAGE:	120v

SHIPPING	
CARTON LENGTH:	12"
CARTON WIDTH:	9"
CARTON HEIGHT:	16"
CARTON WEIGHT:	4 lbs.

HINKLEY

HINKLEY  
33000 Pin Oak Parkway  
Avon Lake, OH 44012

PHONE: (440) 653-5500  
Toll Free: 1 (800) 446-5539

hinkley.com

HINKLEY

HINKLEY  
33000 Pin Oak Parkway  
Avon Lake, OH 44012

PHONE: (440) 653-5500  
Toll Free: 1 (800) 446-5539

hinkley.com

This versatile modern thin-trim 2-, 4-, and 6-inch gimbal with multi-directional adjustable swivel produces high light output with minimal glare as a result of its regressed light source. Ideal for general lighting or for areas requiring a directional light to showcase unique elements or to create dramatic wall-wash effects.



Model	Size	Watts	Delivered lumens	LED lumens	CRI	Color °T	Voltage
RGM2-3K	2"	8 W	660 lm	800 lm	90	3000 K	120 V
RGM4-3K	4"	12 W	1050 lm	1400 lm	90	3000 K	120 V
RGM6-3K	6"	15 W	1270 lm	1700 lm	90	3000 K	120 V

## Finish

- Every fixture includes a junction box with integrated dimmable driver
- Can be daisy chained
- Superior LED performance and lifespan
- Regressed light source
- Minimal heat emission
- Aluminum construction
- IC certification (suitable for direct contact with insulation)
- Air-tight certified as per ASTM E283-04
- Suitable for wet locations
- 30° tilting, 360° rotation

**BK** Black  
**SN** Satin Nickel  
**WH** White

**RGM6-3K-SN**  
6" gimbal recessed downlight  
with 1270 Lumens at 3000 K in a  
satin nickel finish

**RFP-UNI**  
Universal rough-in plate

