

RECEIVED  
FEB 15 2019  
By \_\_\_\_\_

148-28

170'

66'

15'

85'

148-29

700 Middle Street

135'

148-30

173'

93'

106'

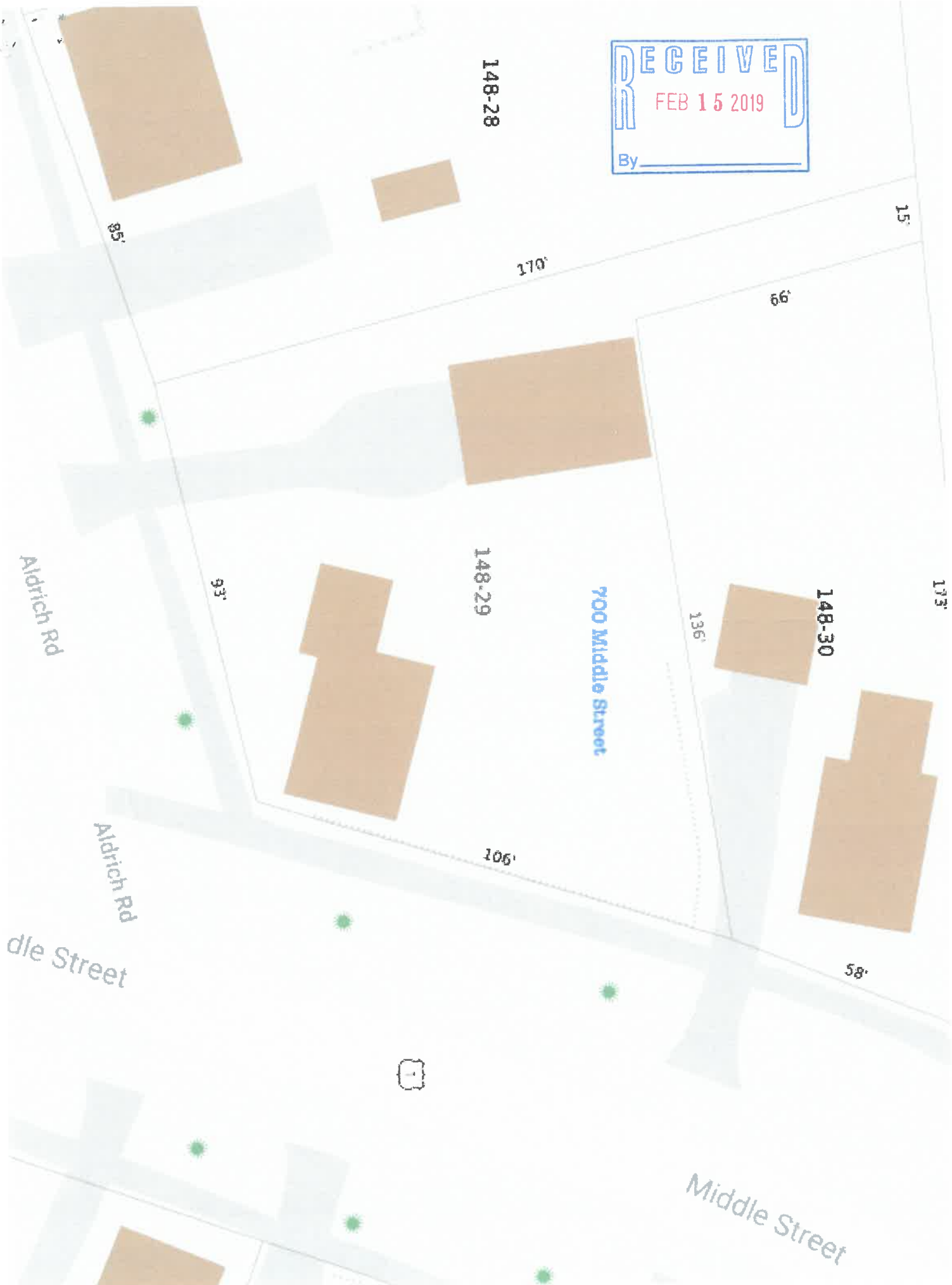
58'

Aldrich Rd

Aldrich Rd

Middle Street

Middle Street





RECEIVED  
FEB 15 2019  
By \_\_\_\_\_



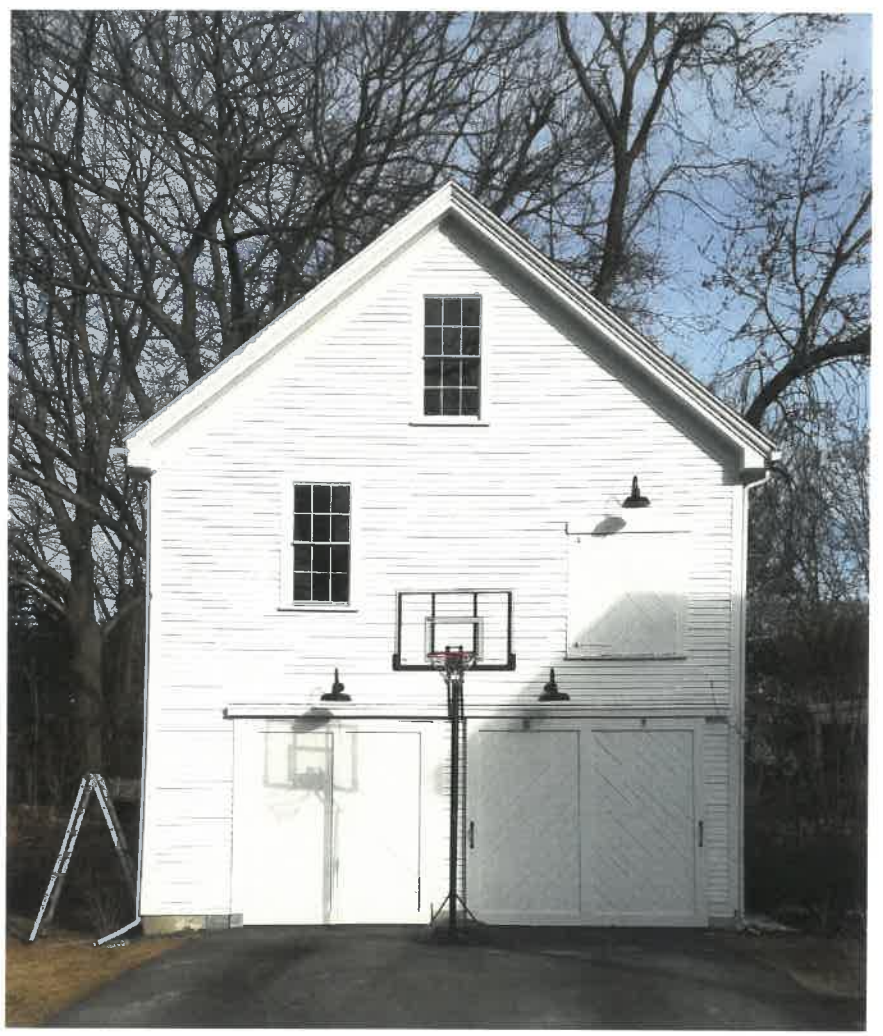
NORTH WALL



WEST WALL



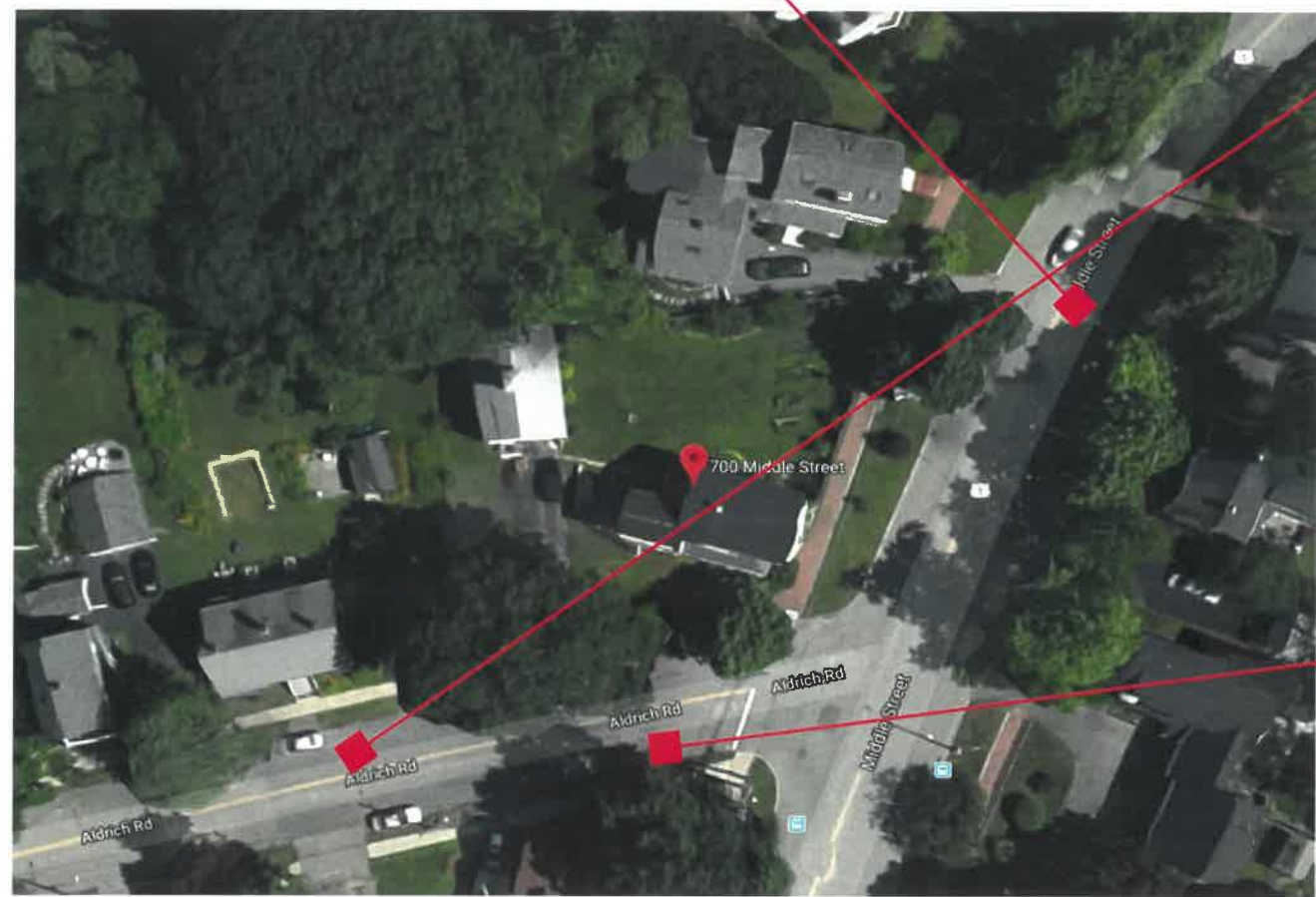
EAST WALL, MIDDLE STREET



SOUTH WALL, ALDRICH STREET



TAYLOR-MYERS BARN RENOVATION



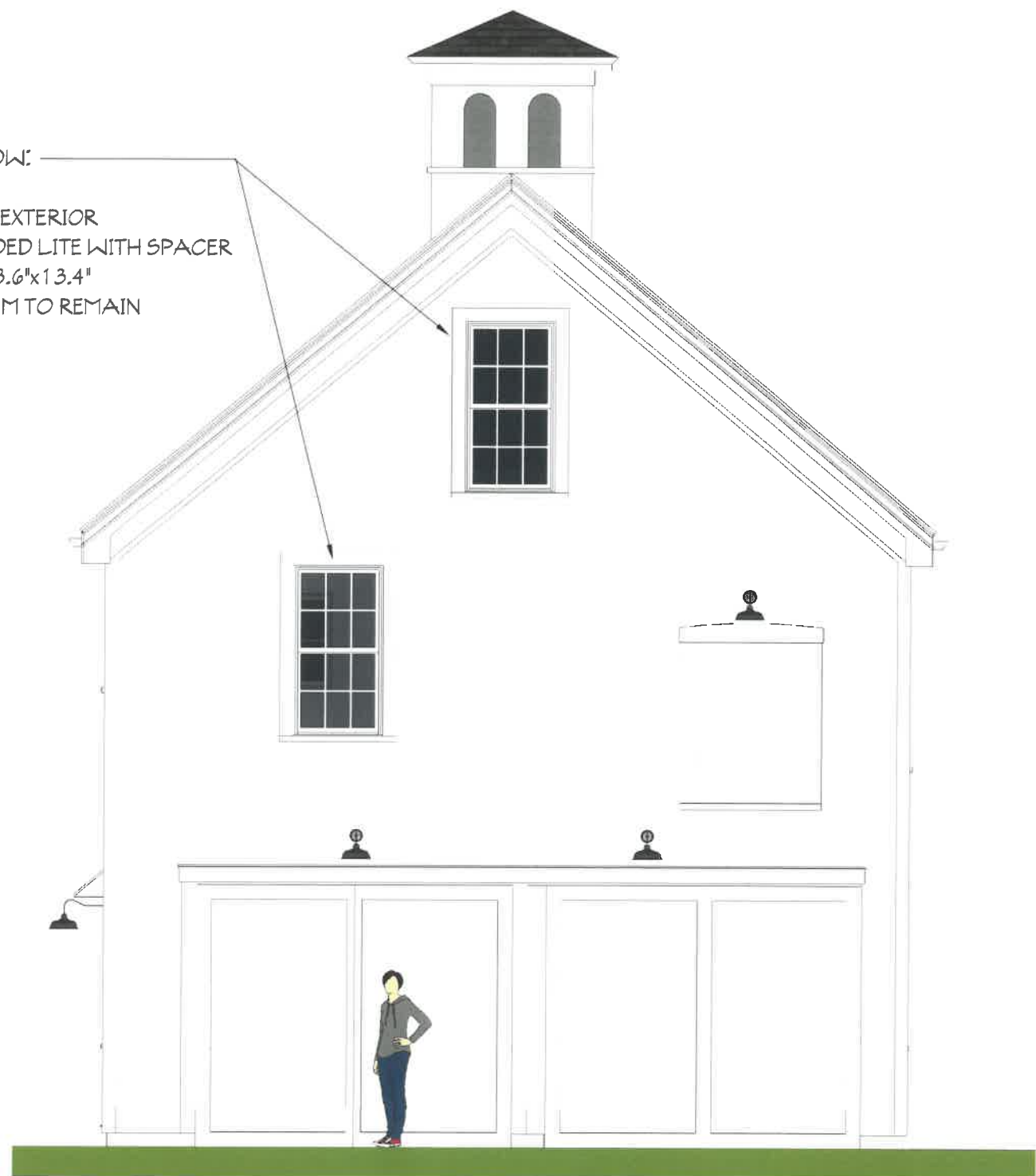


EXISTING DOUBLE HUNG WINDOWS  
DAYLIGHT OPENING: 8.5"x13.5"

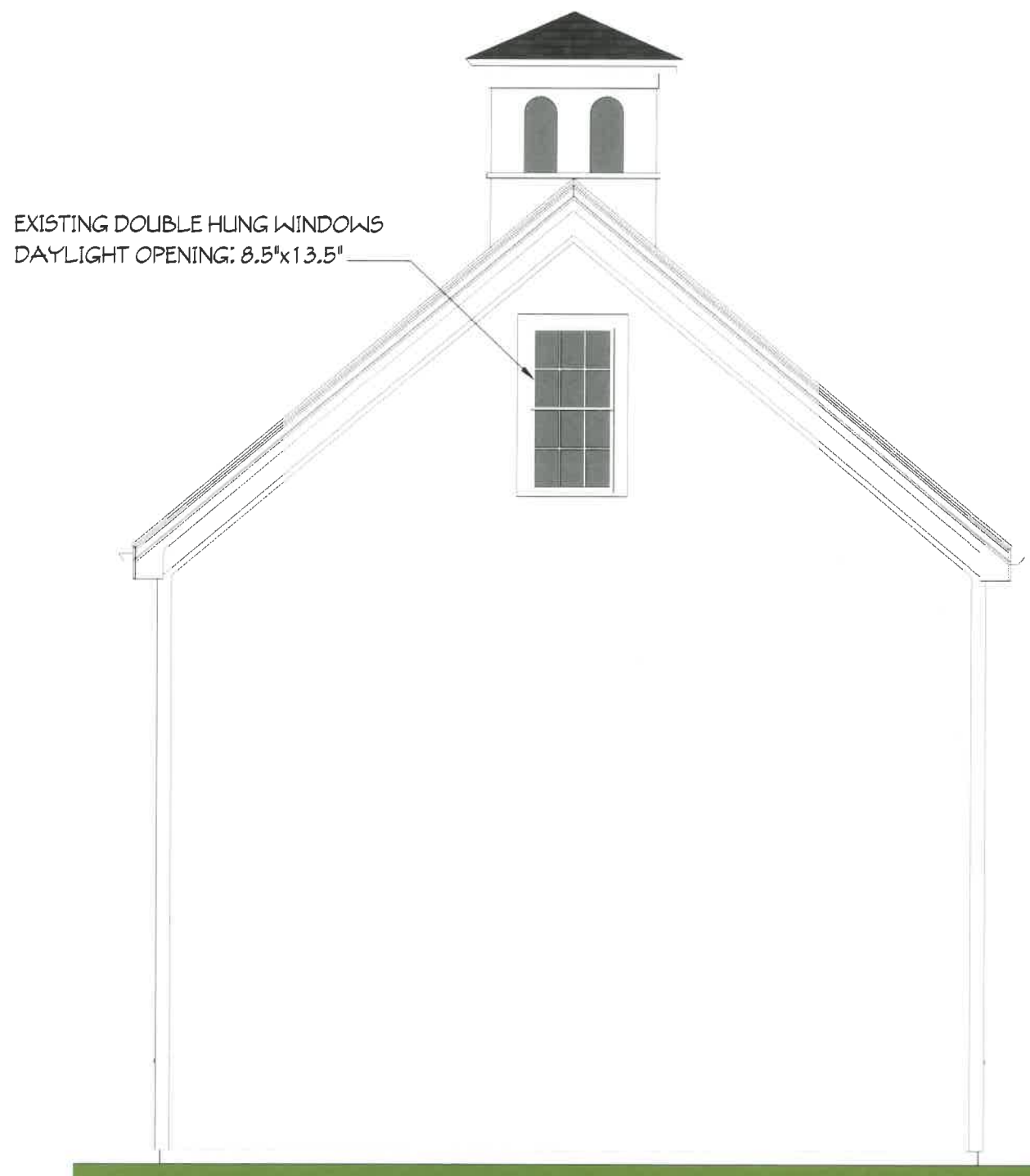
REPLACEMENT WINDOW:  
MARVIN INTEGRITY  
STONE WHITE ULTREX EXTERIOR  
7/8" SIMULATED DIVIDED LITE WITH SPACER  
DAYLIGHT OPENING: 8.6"x13.4"  
EXISTING WINDOW TRIM TO REMAIN



EXISTING ELEVATION



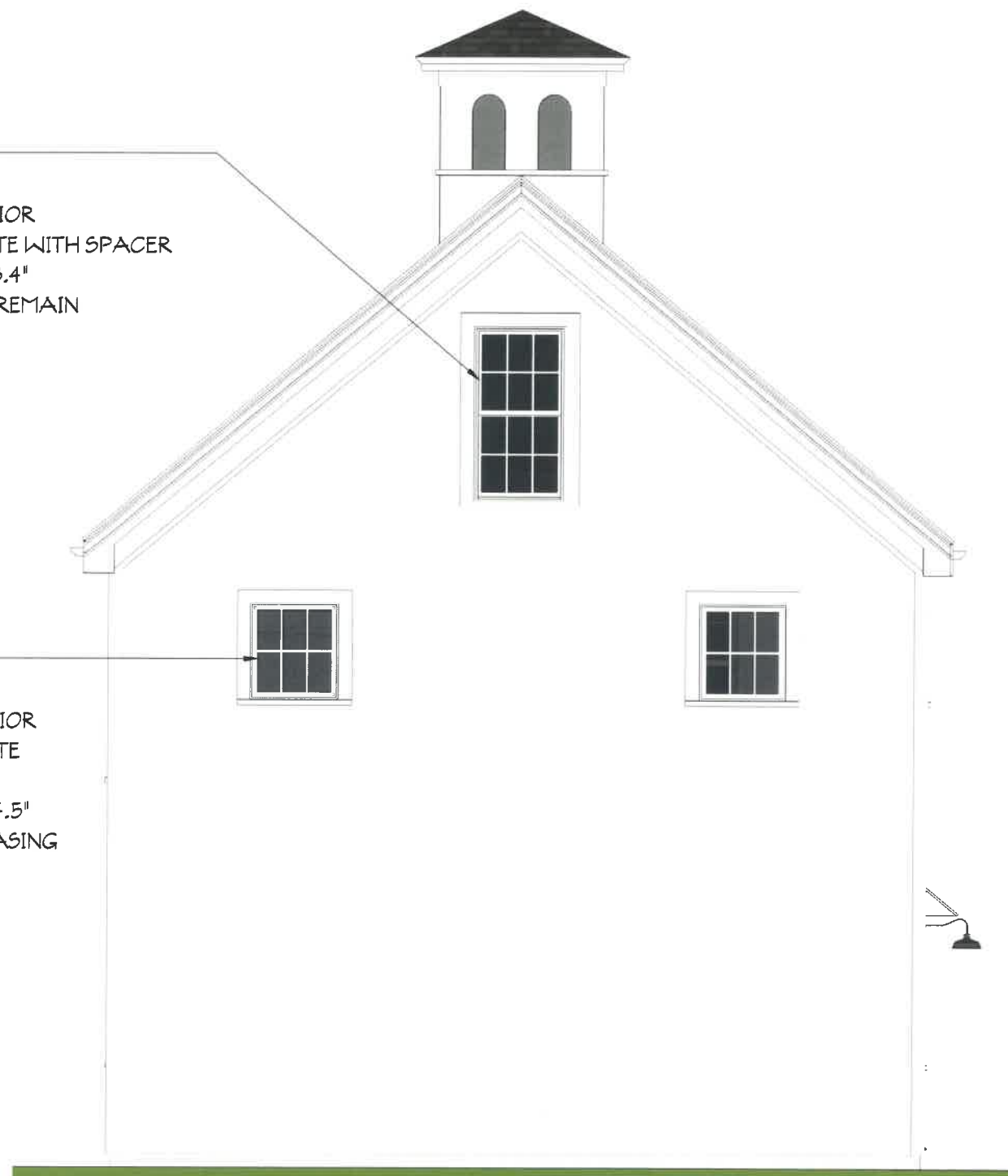
PROPOSED ELEVATION



EXISTING DOUBLE HUNG WINDOWS  
DAYLIGHT OPENING: 8.5"x13.5"

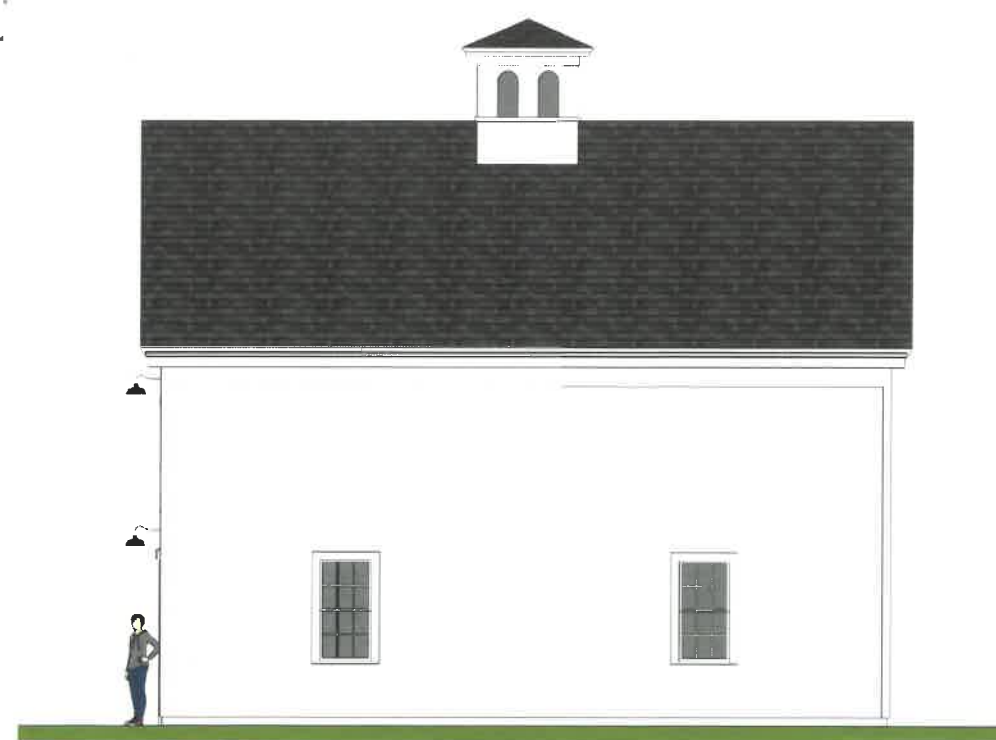
EXISTING ELEVATION

REPLACEMENT WINDOW:  
MARVIN INTEGRITY  
STONE WHITE ULTREX EXTERIOR  
7/8" SIMULATED DIVIDED LITE WITH SPACER  
DAYLIGHT OPENING: 8.6"x13.4"  
EXISTING WINDOW TRIM TO REMAIN



NEW WINDOWS:  
MARVIN INTEGRITY  
STONE WHITE ULTREX EXTERIOR  
7/8" SIMULATED DIVIDED LITE  
WITH SPACER  
DAYLIGHT OPENING: 8.3"x14.5"  
MATCH EXISTING TRIM, 5" CASING  
WITH 2" HISTORIC SILL

PROPOSED ELEVATION



EXISTING ELEVATION  
SCALE: 1/8"=1'-0"

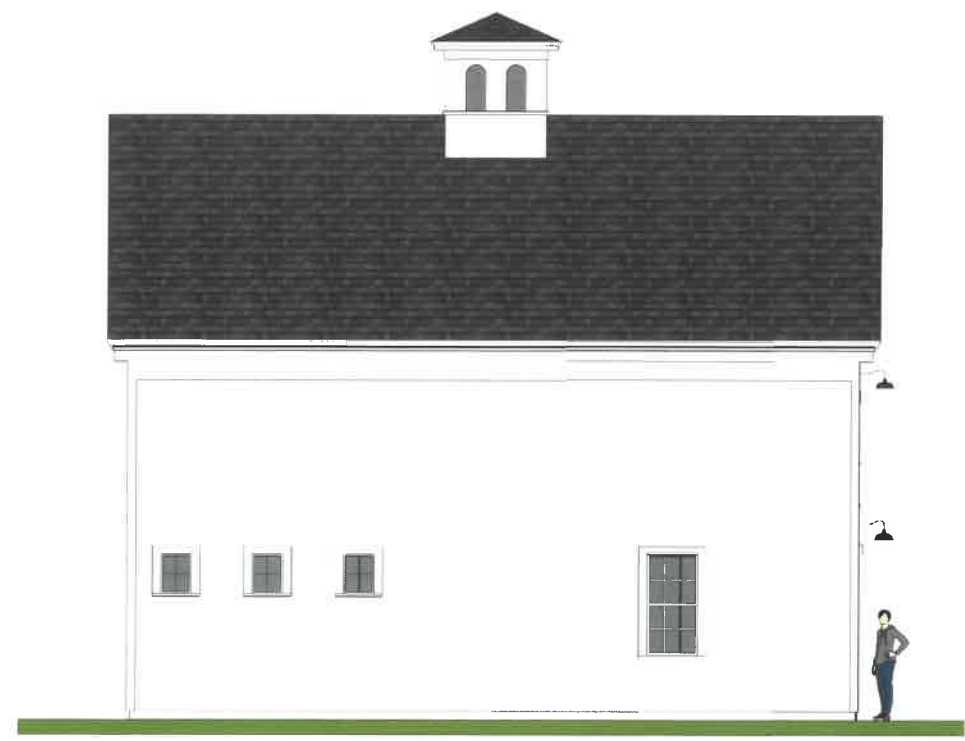
ALL EXISTING TRIM, ROOFING AND SIDING TO REMAIN. REPAIR SIDING AS NEEDED. ALL NEW PAINTED TRIM AND SIDING TO MATCH EXISTING



PROPOSED ELEVATION

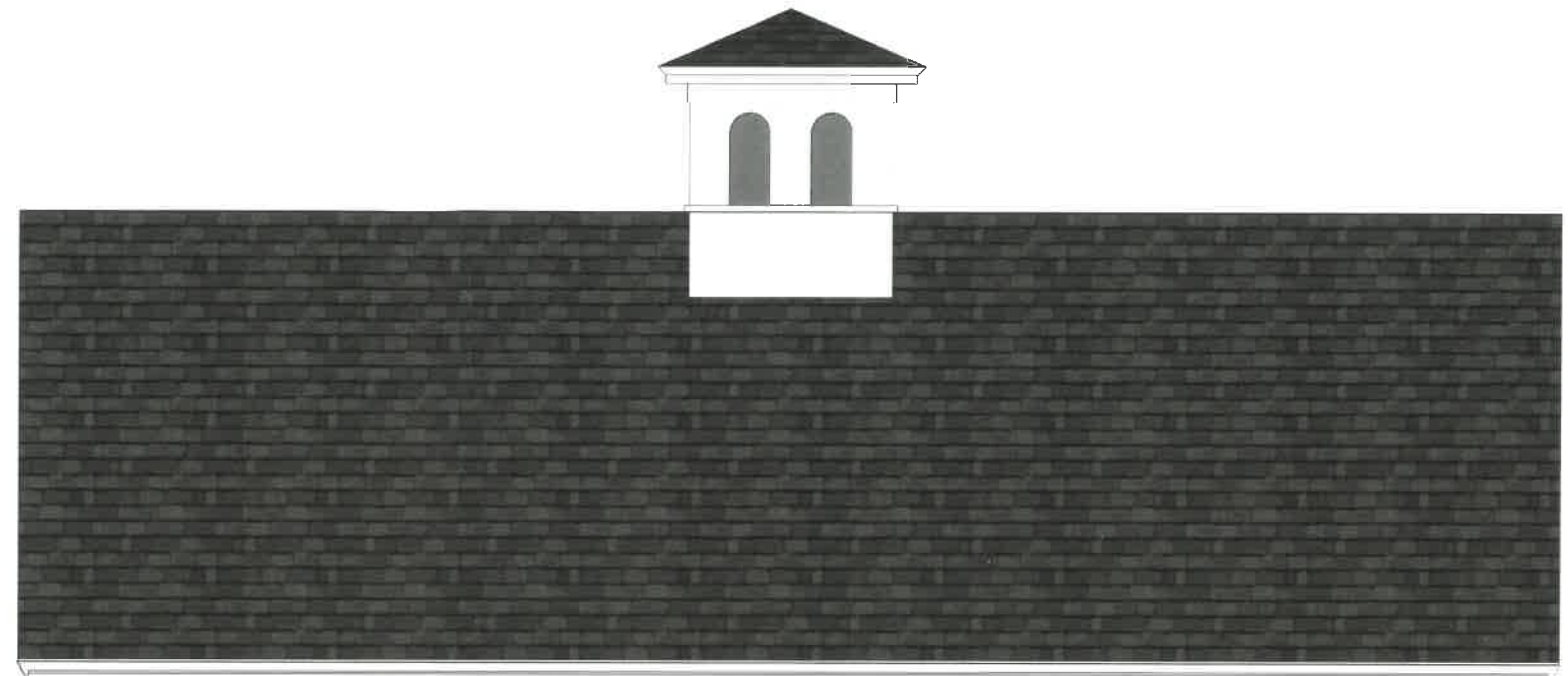
NEW WINDOWS:  
MARVIN INTEGRITY  
STONE WHITE ULTREX EXTERIOR  
7/8" SIMULATED DIVIDED LITE WITH SPACER  
DAYLIGHT OPENING: 8.6"x13.4"  
MATCH EXISTING TRIM, 5" CASING WITH 2" HISTORIC SILL

EXISTING WINDOWS  
DAYLIGHT OPENING: 8.5"x13.5"



EXISTING ELEVATION  
SCALE: 1/8"=1'-0"

ALL EXISTING TRIM, ROOFING AND SIDING TO REMAIN. REPAIR SIDING AS NEEDED. ALL NEW PAINTED TRIM AND SIDING TO MATCH EXISTING



NEW WINDOWS:  
MARVIN INTEGRITY  
STONE WHITE ULTREX EXTERIOR  
7/8" SIMULATED DIVIDED LITE WITH SPACER  
DAYLIGHT OPENING: 8.3"x14.5"  
MATCH EXISTING TRIM, 5" CASING WITH 2" HISTORIC SILL

EXISTING WINDOWS  
DAYLIGHT OPENING: 8"x11"

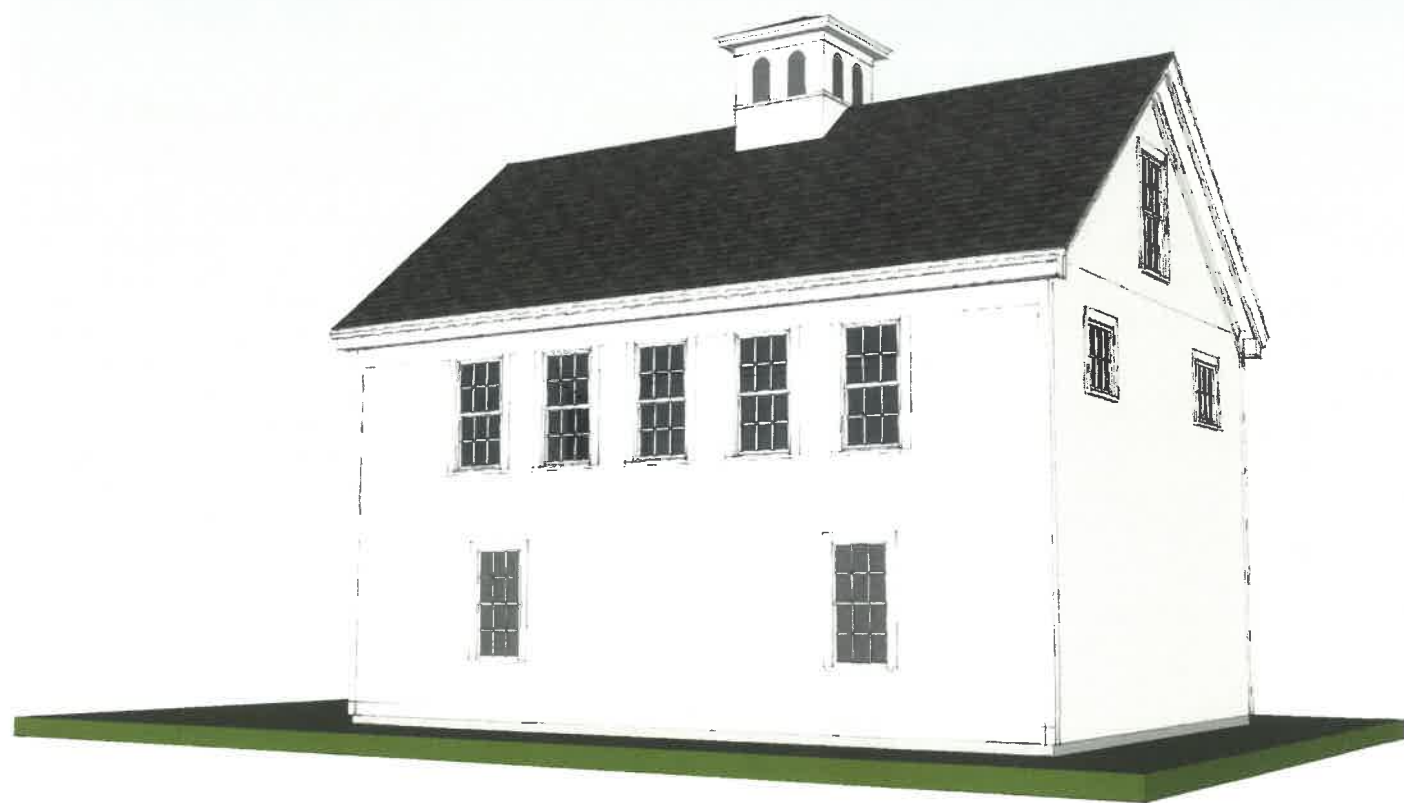
NEW DOOR:  
THERMA-TRU  
SMOOTH PAINTED FIBERGLASS EXTERIOR  
7/8" SIMULATED DIVIDED LITE WITH SPACER  
DAYLIGHT OPENING: ~7.5"x11.5"  
MATCH EXISTING TRIM, 5" CASING  
DOOR HOOD WITH METAL ROOF

EXISTING WINDOW  
D.L.O.: 8.5"x13.5"

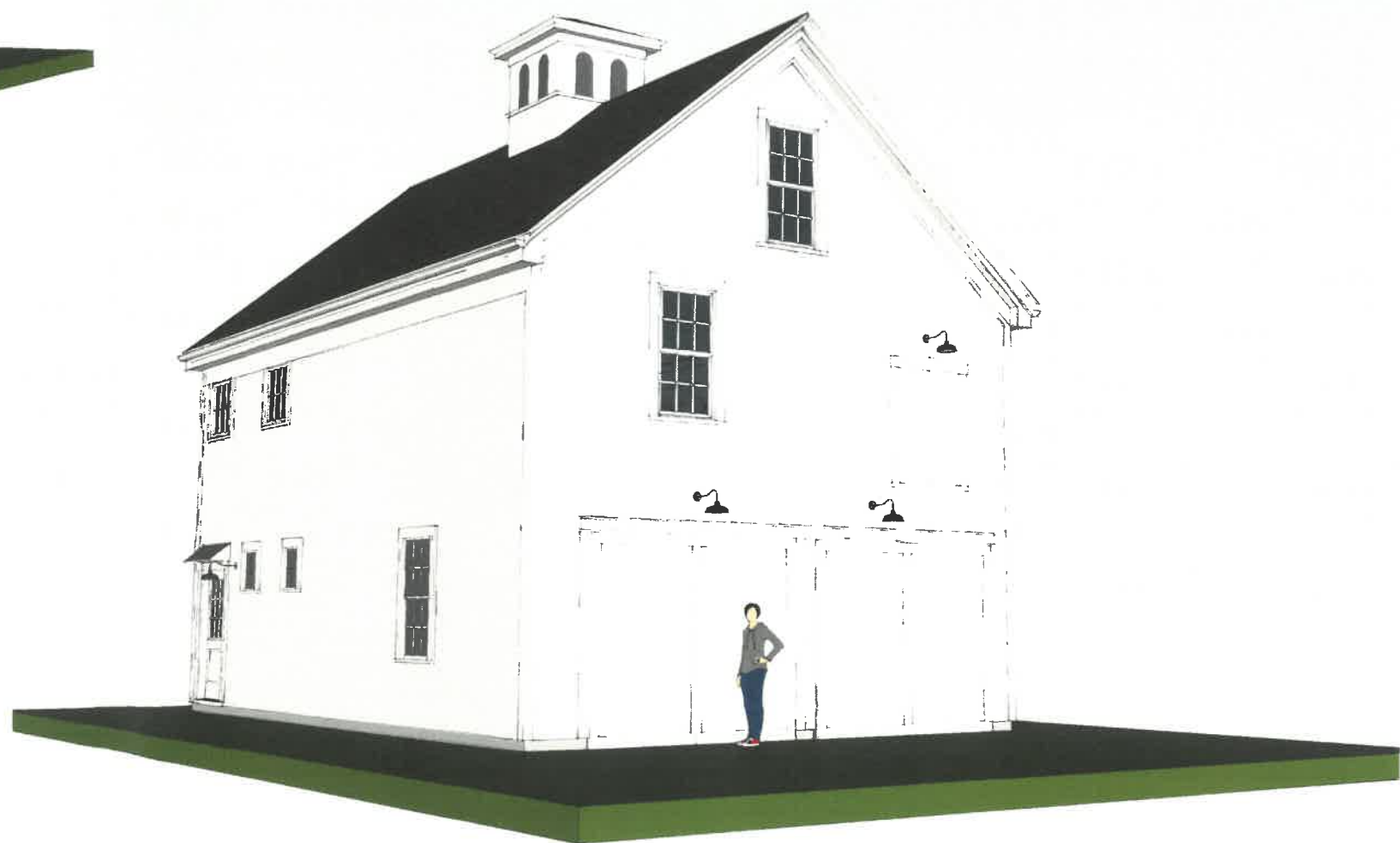
MATCH EXISTING BARN LIGHT FIXTURES

PROPOSED ELEVATION



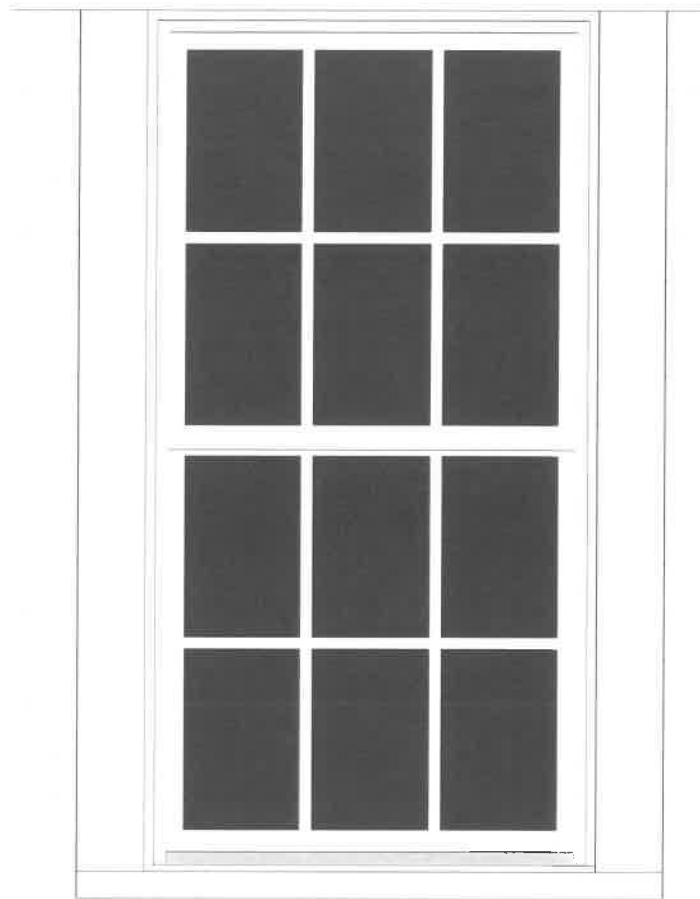


VIEW LOOKING SOUTHWEST



VIEW LOOKING NORTHEAST

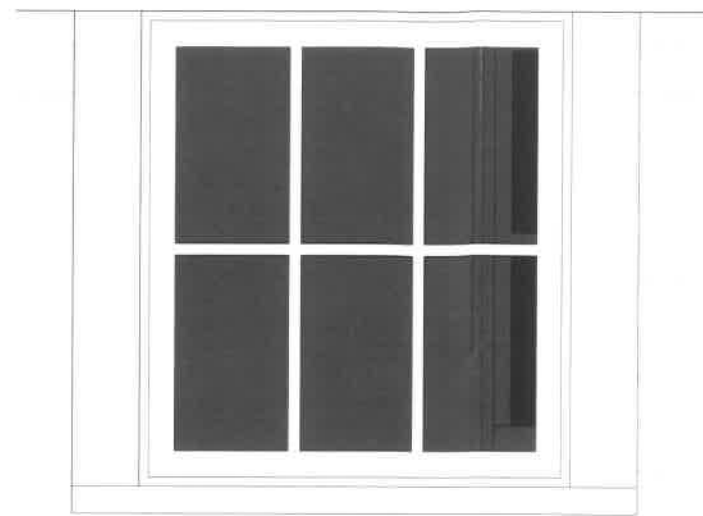




DOUBLE HUNG

MARVIN INTEGRITY WOOD-ULTREX UNIT  
 STONE WHITE ULTREX (FIBERGLASS) EXTERIOR  
 PRE-FINISHED WHITE WOOD INTERIOR  
 INSULATED GLASS  
 7/8" SIMULATED DIVIDED LIGHT WITH SPACER  
 DAYLIGHT OPENING: 8.6" X 13.4"  
 TRIM TO MATCH EXISTING:  
 5" CASING WITH 2" HISTORIC SILL  
 WINDOW CONTROL DEVICE

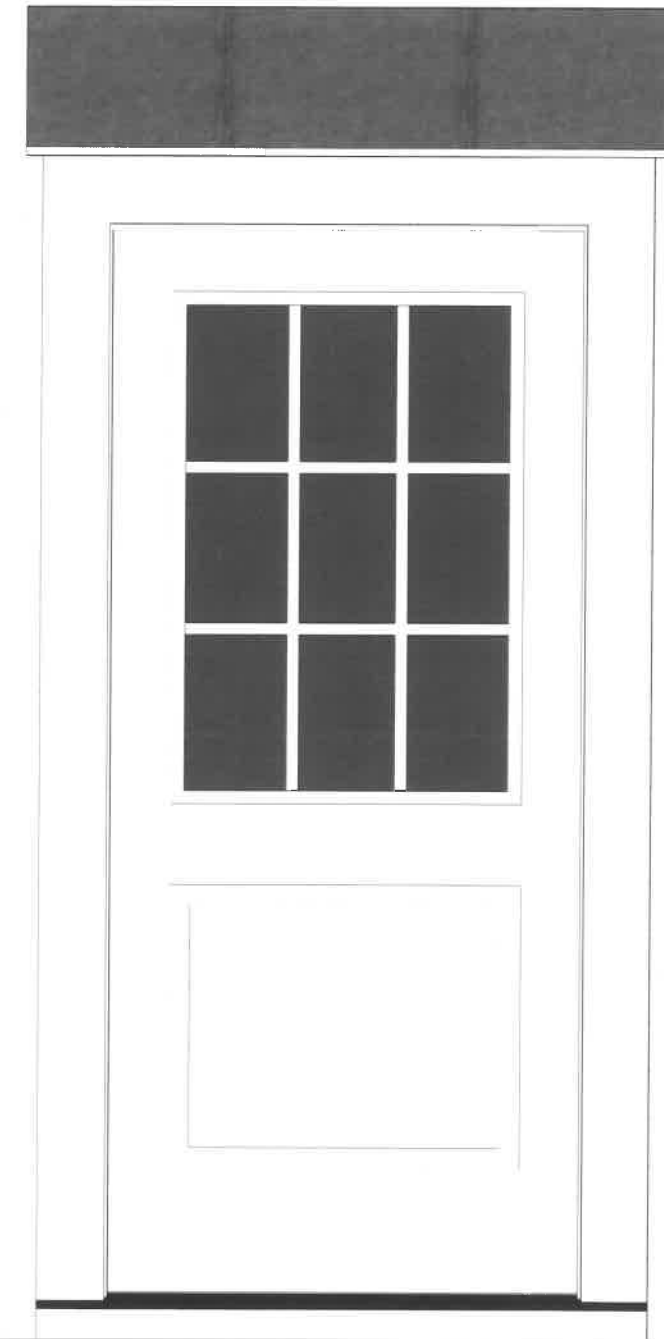
UNIT SIZED TO MATCH EXISTING AS CLOSE AS POSSIBLE  
 BUT ALSO TO MEET EGRESS REQUIREMENTS



AWNING

MARVIN INTEGRITY WOOD-ULTREX UNIT  
 STONE WHITE ULTREX (FIBERGLASS) EXTERIOR  
 PRE-FINISHED WHITE WOOD INTERIOR  
 INSULATED GLASS  
 7/8" SIMULATED DIVIDED LIGHT WITH SPACER  
 DAYLIGHT OPENING: 8.3" X 14.5"  
 TRIM TO MATCH EXISTING:  
 5" CASING WITH 2" HISTORIC SILL

UNIT SIZED TO CLOSELY MATCH SIZE OF SASH IN  
 DOUBLE HUNG UNITS



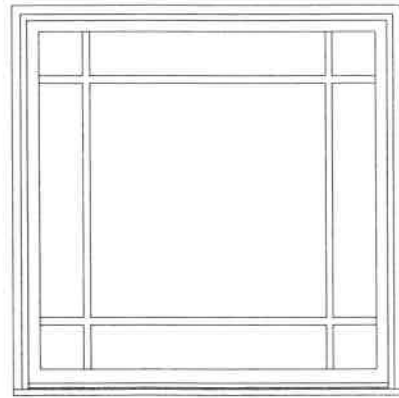
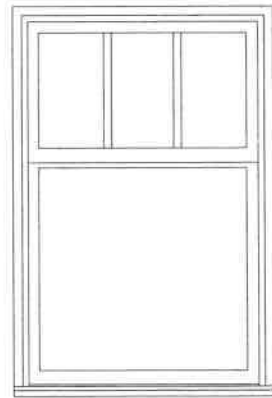
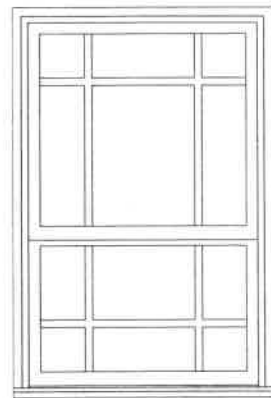
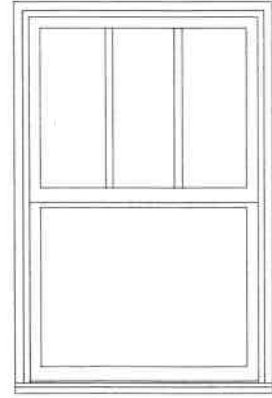
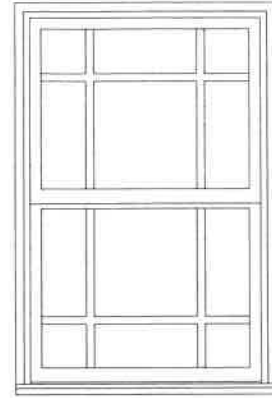
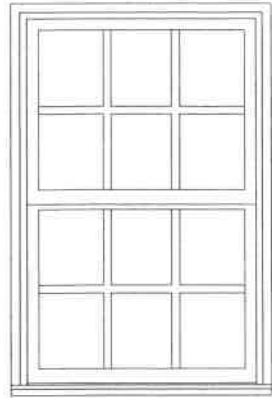
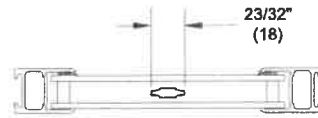
ENTRY DOOR

THERMA-TRU SMOOTH FIBERGLASS DOOR  
 3'-0" X 6'-8" UNIT SIZE  
 PAINTED TO MATCH EXISTING  
 INSULATED GLASS  
 7/8" SIMULATED DIVIDED LIGHT WITH SPACER  
 DAYLIGHT OPENING: ~7.5" X 11.5"  
 CASING TO MATCH EXISTING: 5" CASING  
 DARK BRONZE ALUMINUM SILL  
 PAINTED HOOD WITH METAL ROOF

*All Ultrex Double Hung*

**Section Details: Divided Lite Options**

**Divided Lite Options**



**Conversions Formula:**

$$\frac{\text{Total DLO} - \text{Total Bar Width}}{\text{Number of lites}} = \text{Individual DLO}$$

**Notes:**

- Rectangle GBGs for special size units will default to the next smaller standard size lite pattern. Also available will be Prairie patterns, Cottage patterns, and customer specified equal rectangular lite patterns.
- Prairie available in 9 lite and 6 lite top, bottom, left, and right patterns.
- Cottage GBGs for special sizes units will default to the next smaller standard size lite pattern. Cottage GBGs are also available in customer selected lite patterns.
- Minimum DLO measurement for equal lite GBG option is 3" (76) and will be validated by OMS.
- Standard DLO measurement for Prairie GBG options is 4" (102). Special DLO corners are n/a.
- Standard DLO height measurement for Cottage GBG option is 10" (254). Minimum DLO height is 3" (76) for both one and two high patterns.