

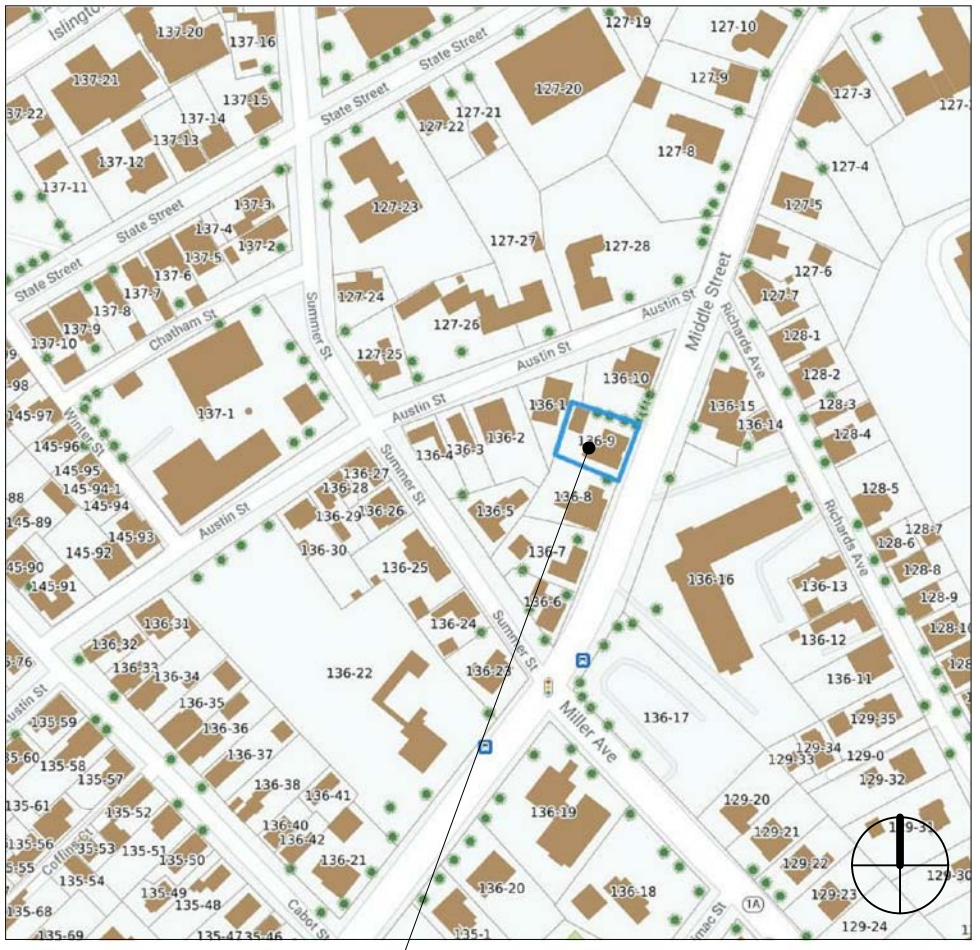
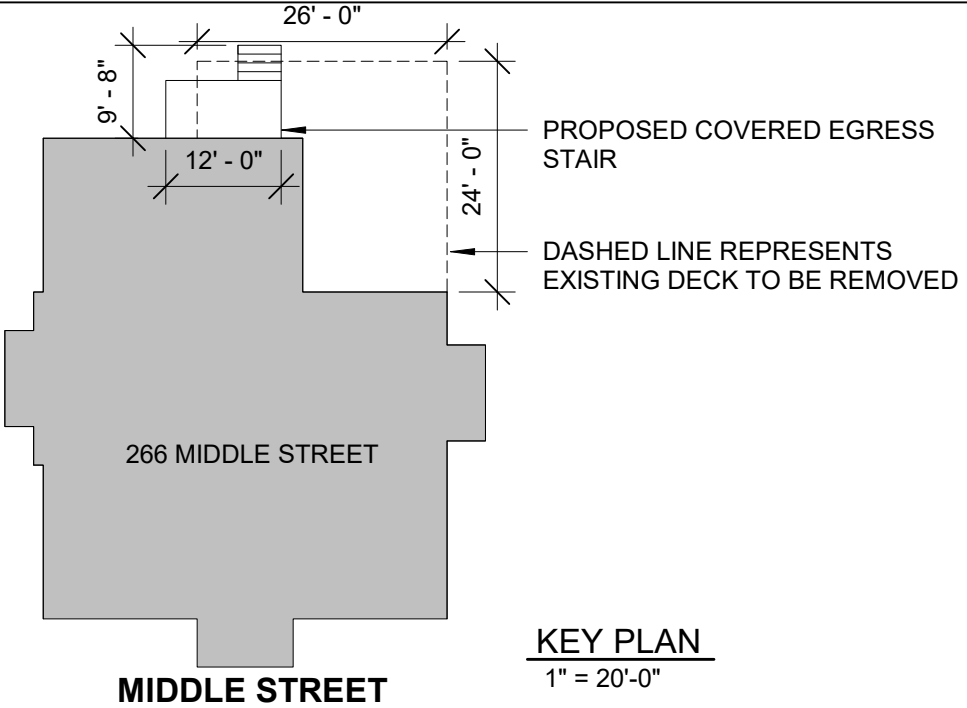
266 MIDDLE STREET COVERED EGRESS STAIR

Historic District Commission Work Session / Public Hearing - October 2021, Portsmouth, New Hampshire

GENERAL PROJECT DESCRIPTION:

- PROPOSED WORK:
- REMOVAL OF THE EXISTING REAR EGRESS DECKS AND CONSTRUCTION OF THE PROPOSED REAR COVERED EGRESS STAIR AND DECK.
 - REMOVAL OF ALL EXISTING VINYL SIDING AND TRIM TO BE REPLACED BY SMOOTH PAINTED HARDIE PLANK AND HARDIE TRIM, REFER TO SHEET A4
 - REMOVE ALL EXISTING VINYL WINDOWS AND WOOD KITCHEN WINDOWS. TO BE REPLACED IN KIND WITH MATHEW BROTHERS PVC WINDOWS, REFER TO SHEET A4

SHEET LIST	
Sheet Number	Sheet Name
C	COVER
A1	IMAGES OF EXISTING CONDITIONS
A2	FLOOR PLAN AND ELEVATIONS
A3	DETAILS AND MATERIALS
A4	MATERIALS AND CUT SHEETS
APPENDIX 01	SPENCER WALCOTT REPLACEMENT WINDOW SCHEDULE
APPENDIX 02	HARDIE PLANK
APPENDIX 03	CORNER BOARD TRIM



266 MIDDLE STREET
PORTSMOUTH, NH 03801

© 2021 McHenry Architecture

COVERED EGRESS STAIR

266 MIDDLE STREET
PORTSMOUTH, NH 03801

COVER

Historic District Commission Work Session / Public Hearing - October 2021

McHENRY ARCHITECTURE

4 Market Street
Portsmouth, New Hampshire

C

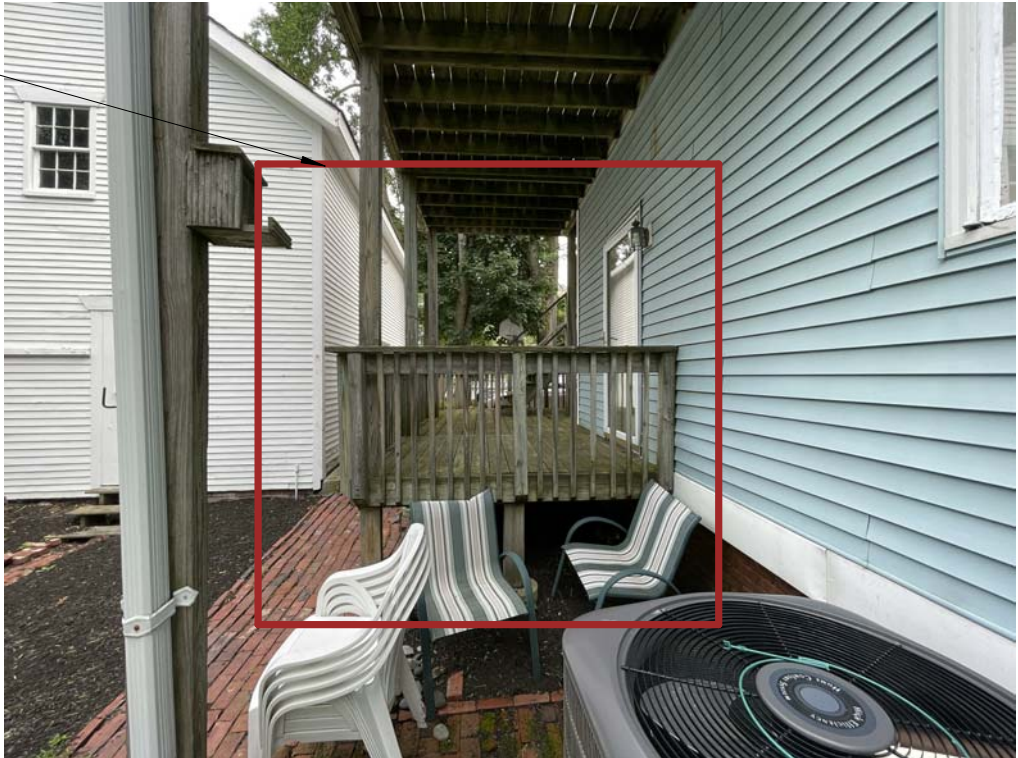
10/06/2021

McHA: RD / SM

AS INDICATED



LOCATION OF PROPOSED
COVERED EGRESS STAIR



© 2021 McHenry Architecture

COVERED EGRESS STAIR
266 MIDDLE STREET
PORTSMOUTH, NH 03801

IMAGES OF EXISTING CONDITIONS
Historic District Commission Work Session / Public Hearing - October 2021

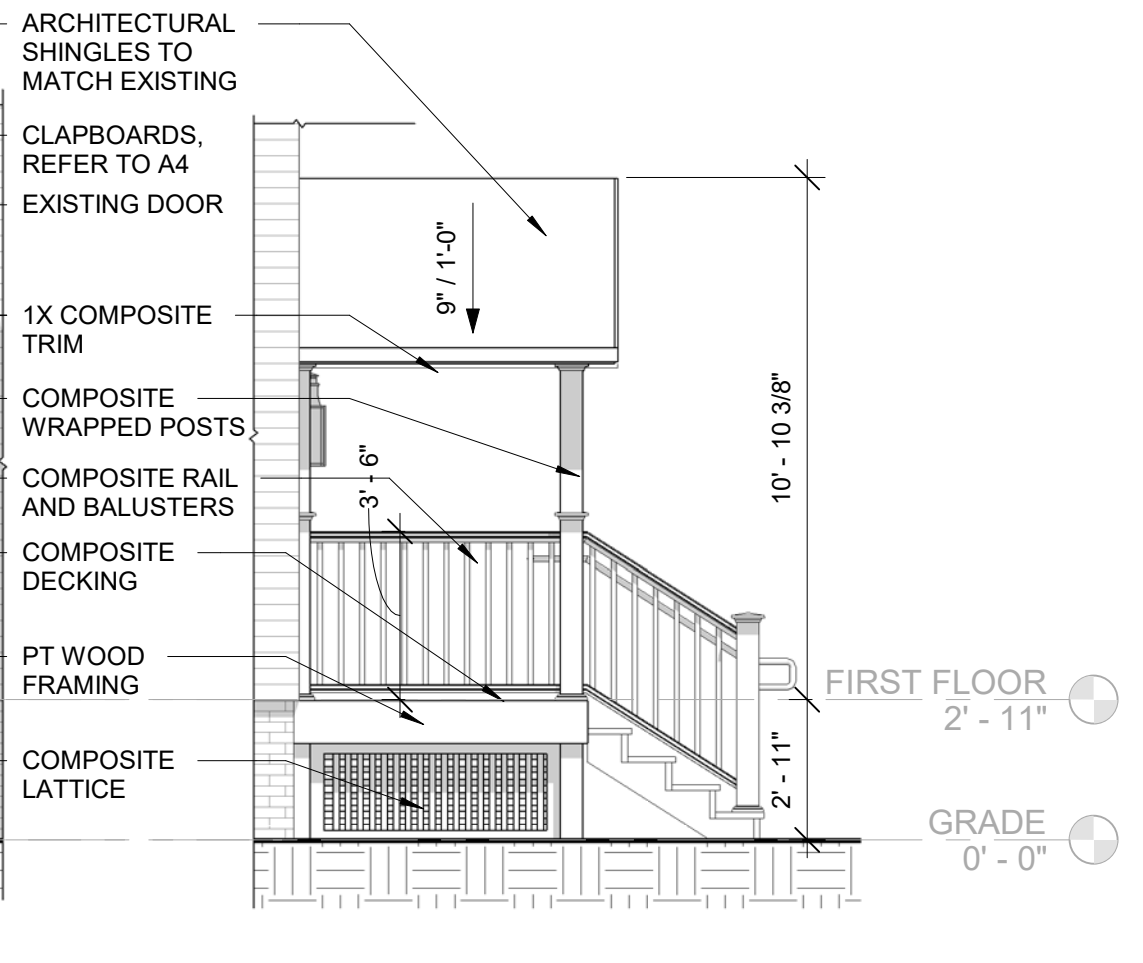
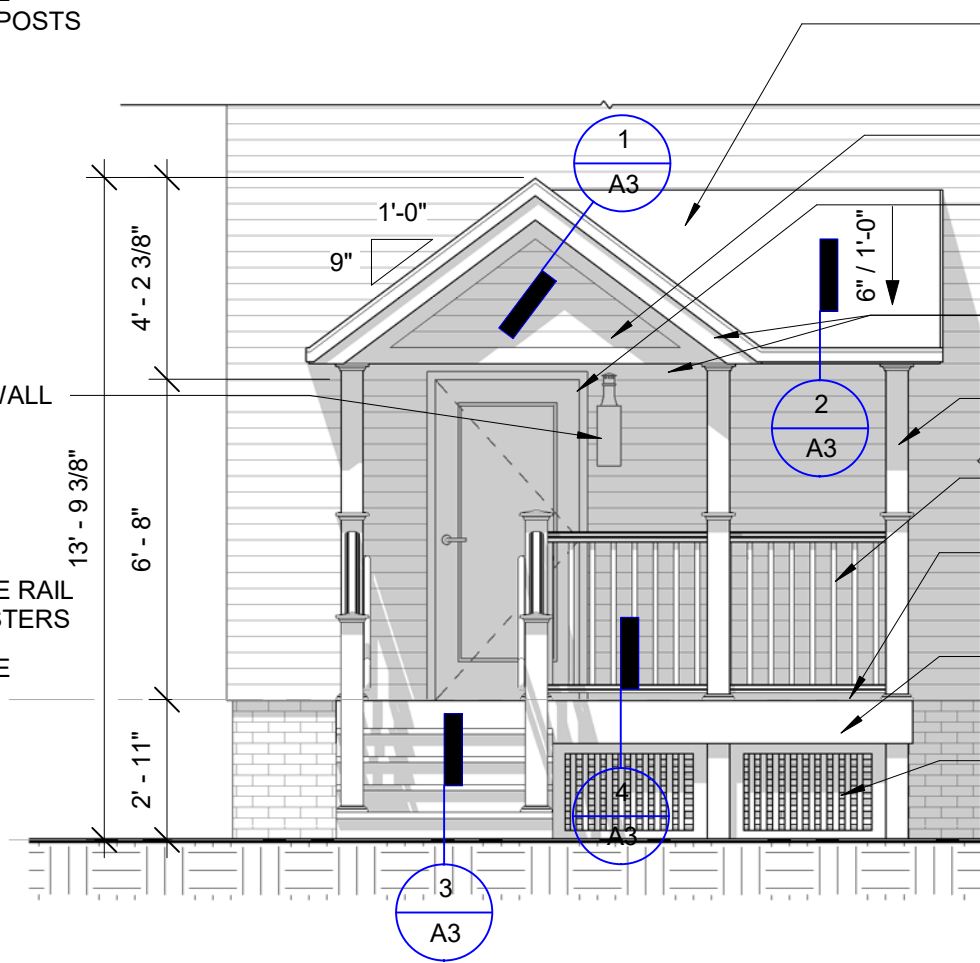
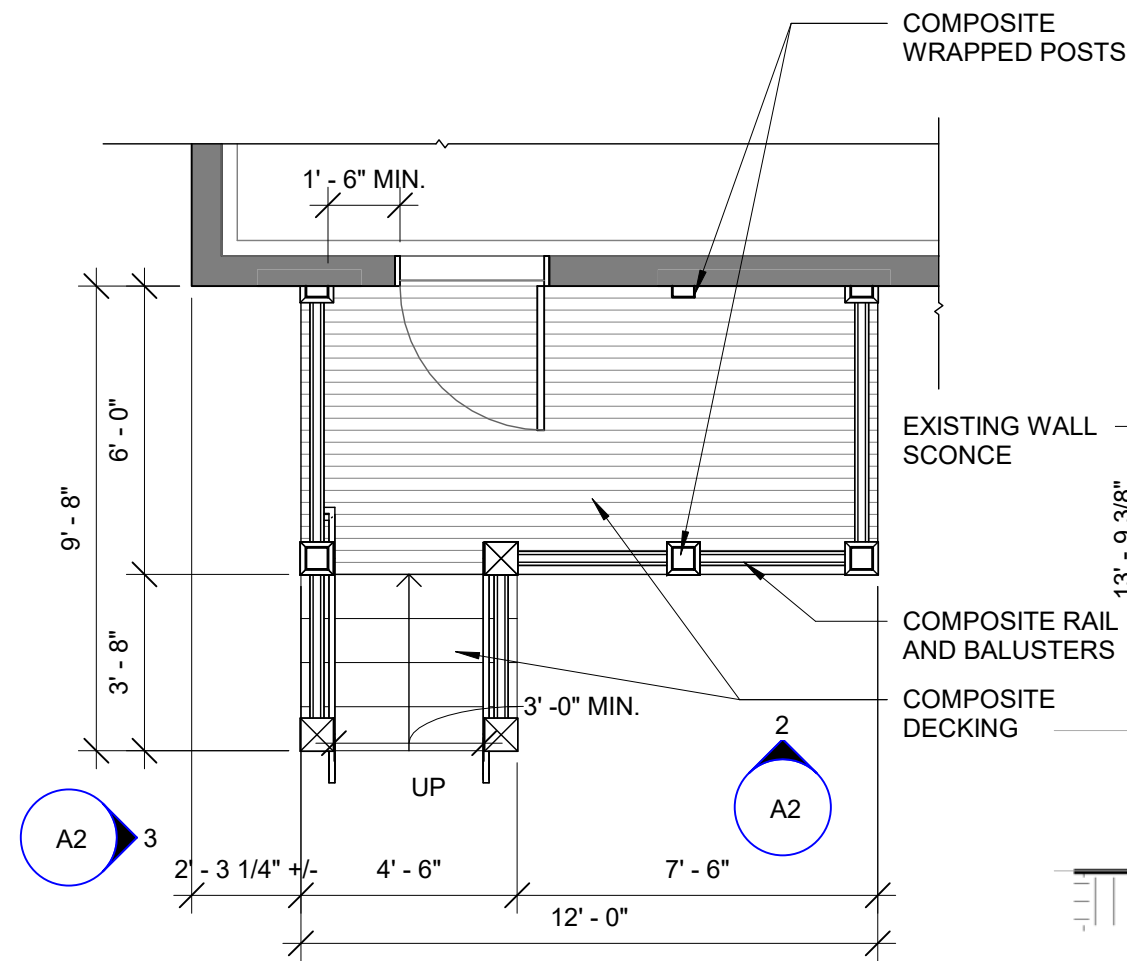
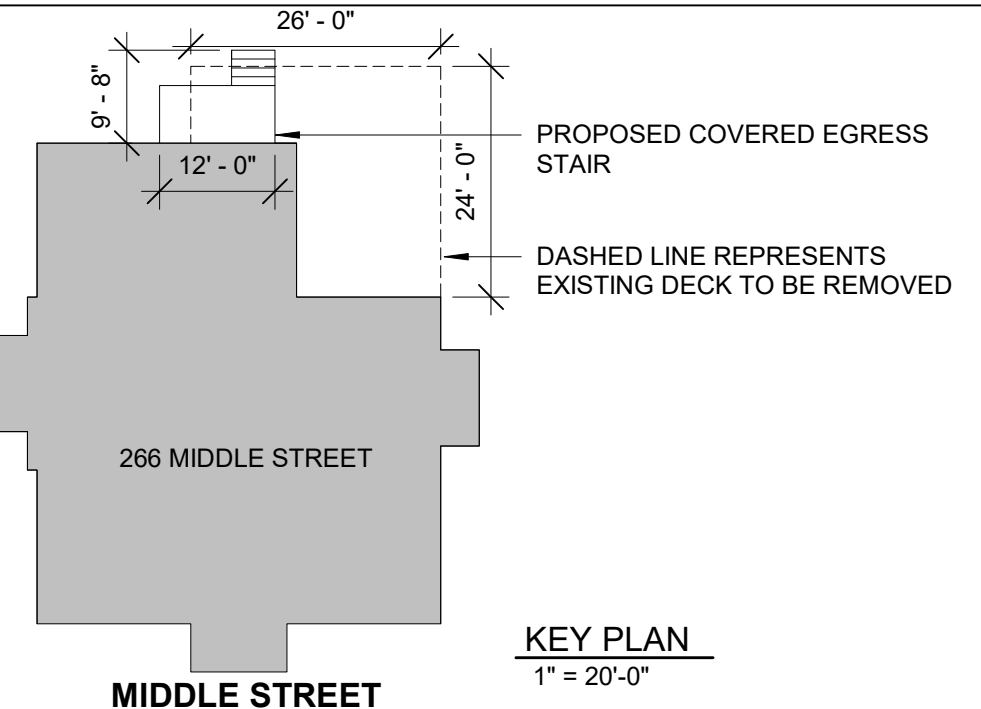
McHENRY ARCHITECTURE
4 Market Street
Portsmouth, New Hampshire

A1

10/06/2021
McHA: RD / SM
NOT TO SCALE

GRAPHIC KEY

- [Solid Line] : EXISTING
- [Dashed Line] : TO BE REMOVED
- [Thick Solid Line] : PROPOSED



COVERED EGRESS STAIR
266 MIDDLE STREET
PORTSMOUTH, NH 03801

FLOOR PLAN AND ELEVATIONS
Historic District Commission Work Session / Public Hearing - October 2021

McHENRY ARCHITECTURE
4 Market Street
Portsmouth, New Hampshire

A2

10/06/2021
McHA: RD / SM
AS INDICATED



AZEK TIMBERTECH CLASSIC COMPOSITE SERIES
RAILING AND GUARDRAIL, OR EQUAL



HANDRAIL EXTENTION



PREMIER RAILING®
TOP RAIL SIZE: 3.5" X 2.7"

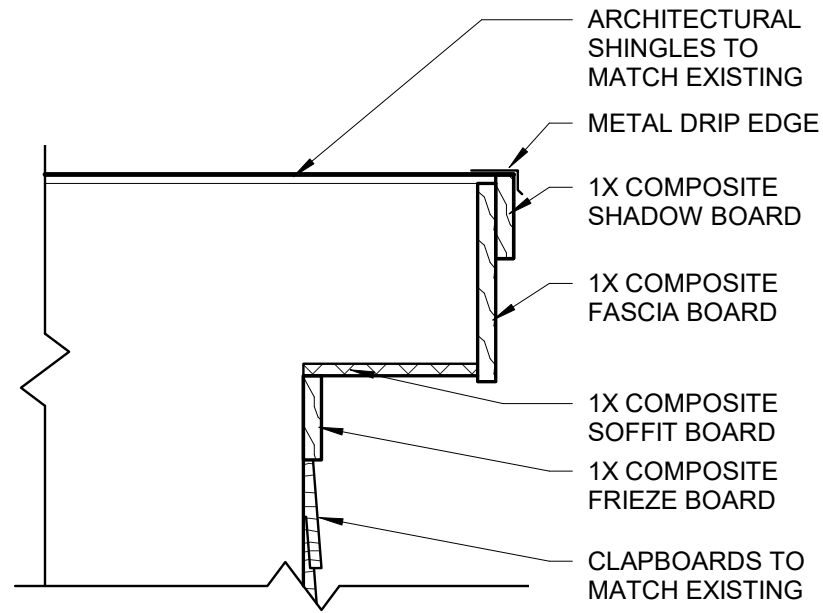
TOP RAIL PROFILE



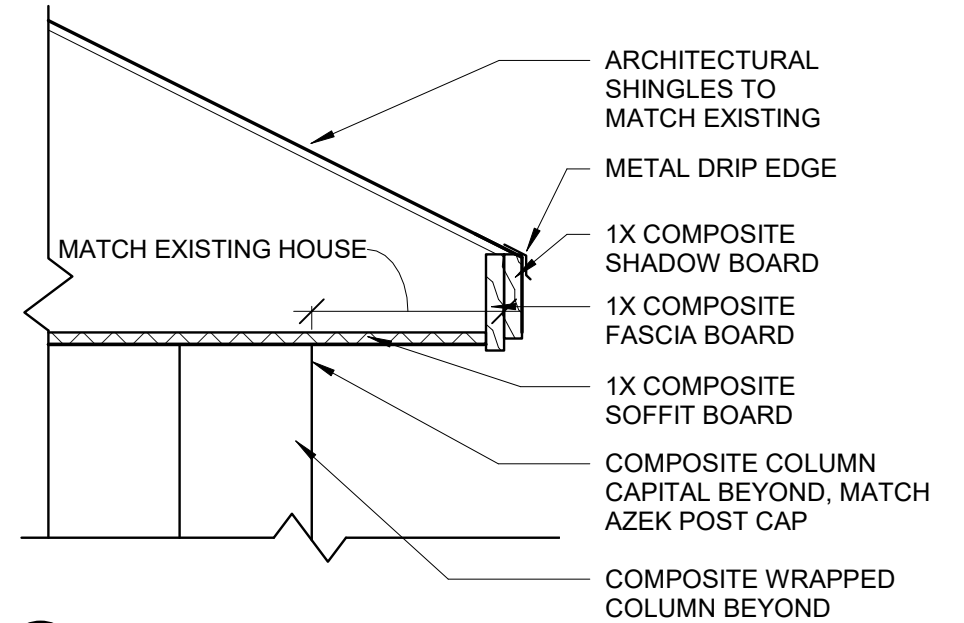
5.5"x5.5" Island Cap

POST CAP

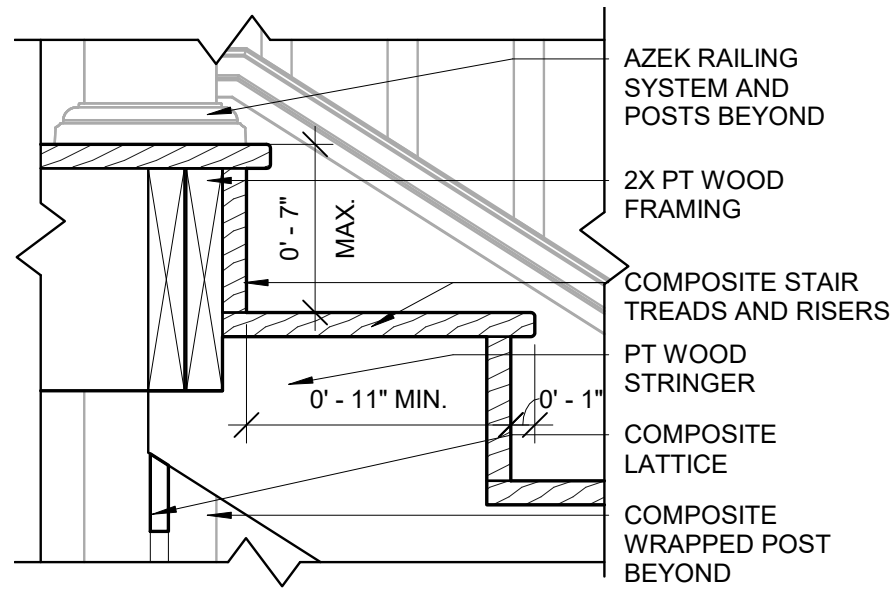
GUARDRAIL AND RAILING DETAILS



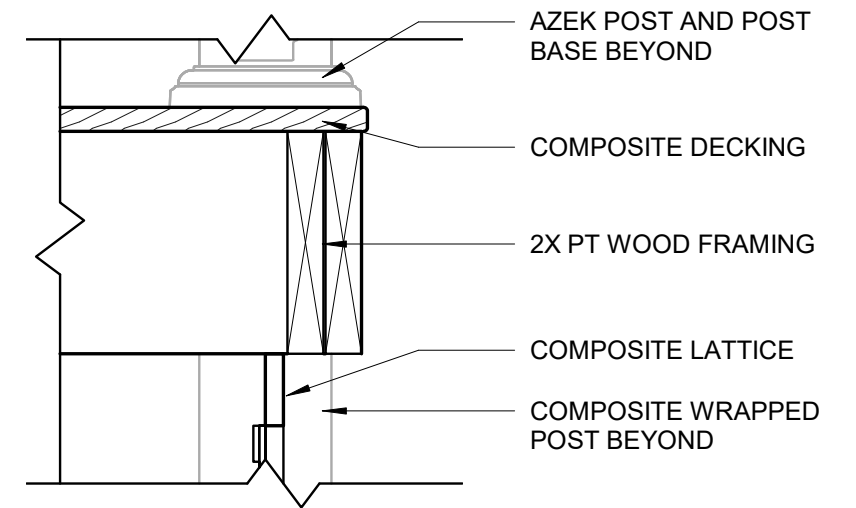
1 RAKE DETAIL
1 1/2" = 1'-0"



2 EAVE DETAIL
1 1/2" = 1'-0"



3 STAIR DETAIL
1 1/2" = 1'-0"



4 DETAIL AT EDGE OF DECK
1 1/2" = 1'-0"

© 2021 McHenry Architecture

COVERED EGRESS STAIR

266 MIDDLE STREET
PORTSMOUTH, NH 03801

DETAILS AND MATERIALS

Historic District Commission Work Session / Public Hearing - October 2021

McHENRY ARCHITECTURE

4 Market Street
Portsmouth, New Hampshire

A3

10/06/2021

McHA: RD / SM

AS INDICATED

Z:\Active Project Files\18041-BOSEN STAIR\BOSEN STAIR.rvt



SMOOTH 5" EXPOSURE HARDIE
PLANK CLAPBOARD SIDING
(LEFT) , PAINTED, REFER TO
APPENDIX 02

COMPOSITE DECKING: AZEK
TIMBERTECH, OR EQUAL



MATHEWS BROTHERS SPENCER WALCOTT PVC WINDOWS TO REPLACE ALL
EXISTING VINYL WINDOWS (DOUBLE HUNG SHOWN) - REFER TO APPENDIX 01

Pop-in 4in Round LED New Construction Recessed Downlight Multi-Pack

By WAC Lighting

LUMENS

LIGHT AND LIVING

Call Us 877.445.4486

Product Options

Quantity: 2-Pack , 6-Pack

Details

- Designed In 2019
- Finish: Electrostatically Powder Coated White
- Material: Aluminum
- Housing Type: IC Remodel Housing
- Trim Type: Deep Reflector
- Dimmer Range: 100-5%
- Title 24 compliant
- Energy Star Qualified
- ETL Listed Wet
- Warranty: 5 Years Functional, 2 Years Finish
- Made In China

Dimensions

Cut-out: Diameter 4.13"
Fixture: Height 4.6", Diameter 5"

Lighting

- 12 Watt (1035 Lumens) 120 Volt/277 Volt Integrated LED: CRI: 90 Color Temp: 3000K

Additional Details

Product URL: <https://www.lumens.com/pop-in-4in-round-led-new-construction-recessed-downlight-multi-pack-by-wac-lighting-WACP312423.html>
Rating: ETL Listed Wet

Product ID: WACP312423

Notes:

SOFFIT MOUNTED RECESSED DOWNLIGHT, OR EQUAL

Double Hung Features

- Patented built-in 3/4" J-Channel is recessed into frame
- Deep pocketed head with compression seal weatherstripping
- Heavy-gauge vinyl frame extrusions for strength and durability
- Top sash tilts in for easy cleaning
- Cam lock and keeper
- Top & bottom sash interlock at meeting rail for added security, and to minimize air infiltration
- Dual layers of wool pile weatherstripping
- 3/4" Insulating glass with Duralite® warm-edge technology
- Bottom sash tilts in for easy cleaning
- Sloped sill drains water away from house
- Integral finger lift on the operating sash for ease of movement
- Rigid screen pocket on sill reduces "screen rattle", even on windy days

EXISTING WINDOWS AT 266 MIDDLE STREET

© 2021 McHenry Architecture

COVERED EGRESS STAIR

266 MIDDLE STREET
PORTSMOUTH, NH 03801

MATERIALS AND CUT SHEETS

Historic District Commission Work Session / Public Hearing - October 2021

McHENRY ARCHITECTURE

4 Market Street
Portsmouth, New Hampshire

A4

10/06/2021
McHA: RD / SM
NOT TO SCALE

Z:\Active Project Files\18041-BOSEN STAIR\BOSEN STAIR.rvt

Tel:
Fax:
Email:

BILL TO:

SHIP TO:

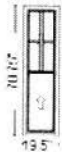
QUOTE #	STATUS	CUSTOMER PO#	DATE QUOTED
541995	None		7/19/2021 1:32:15 PM
QUOTED BY	TERMS	PROJECT NAME	QUOTE NAME
Alan Beasley		BOSEN LAW OFFICES	RICCI INSTALLS

LINE #	DESCRIPTION	QTY	LIST PRICE	NET PRICE	EXTD. PRICE
--------	-------------	-----	------------	-----------	-------------

100-1

1

Walcott Replacement Double Hung
 19.5 X 70.75 Unit Size, White, Insul Low-E & Argon, DLO
 Width Equal, 4/1 Lite SDL, 7/8", White Simulated Divided
 Lite w/ Spacer Bar, 14.62 X 29.87 Clear Opening, 3.03
 SQFT, White Single Lock, No Window Opening Control
 Device, White Standard Tilt Latch, Insert White Full Screen
 Applied
 w/Sill Extender
 Unit 1: UFactor: 0.28, SHG: 0.26, VLT: 0.47, CR: 60



Opening: 19.75" X 71"
 O.S.M.: 19.5" X 70.75"

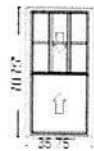
Tag: RECEPTION

LINE #	DESCRIPTION	QTY	LIST PRICE	NET PRICE	EXTD. PRICE
--------	-------------	-----	------------	-----------	-------------

200-1

1

Walcott Replacement Double Hung
 35.75 X 70.75 Unit Size, White, Insul Low-E & Argon, DLO
 Width Equal, 6/1 Lite SDL, 7/8", White Simulated Divided
 Lite w/ Spacer Bar, 30.87 X 28.37 Clear Opening, 6.08
 SQFT, White Dual Lock, No Window Opening Control
 Device, White Standard Tilt Latch, Insert White Full Screen
 Applied
 w/Sill Extender
 Unit 1: UFactor: 0.28, SHG: 0.26, VLT: 0.47, CR: 60



Opening: 36" X 71"
 O.S.M.: 35.75" X 70.75"

Tag: RECEPTION

QUOTE #	STATUS	CUSTOMER PO#	DATE QUOTED
541995	None		7/19/2021 1:32:15 PM
QUOTED BY	TERMS	PROJECT NAME	QUOTE NAME
Alan Beasley		BOSEN LAW OFFICES	RICCI INSTALLS

LINE #	DESCRIPTION	QTY	LIST PRICE	NET PRICE	EXTD. PRICE
--------	-------------	-----	------------	-----------	-------------

300-1

1

Walcott Replacement Double Hung
 19.25 X 70.75 Unit Size, White, Insul Low-E & Argon, DLO
 Width Equal, 4/1 Lite SDL, 7/8", White Simulated Divided
 Lite w/ Spacer Bar, 14.37 X 29.87 Clear Opening, 2.98
 SQFT, White Single Lock, No Window Opening Control
 Device, White Standard Tilt Latch, Insert White Full Screen
 Applied
 w/Sill Extender
 Unit 1: UFactor: 0.28, SHG: 0.26, VLT: 0.47, CR: 60



Opening: 19.5" X 71"
 O.S.M.: 19.25" X 70.75"

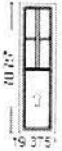
Tag: RECEPTION

LINE #	DESCRIPTION	QTY	LIST PRICE	NET PRICE	EXTD. PRICE
--------	-------------	-----	------------	-----------	-------------

400-1

2

Walcott Replacement Double Hung
 19.375 X 70.75 Unit Size, White, Insul Low-E & Argon,
 DLO Width Equal, 4/1 Lite SDL, 7/8", White Simulated
 Divided Lite w/ Spacer Bar, 14.5 X 29.87 Clear Opening, 3
 SQFT, White Single Lock, No Window Opening Control
 Device, White Standard Tilt Latch, Insert White Full Screen
 Applied
 w/Sill Extender
 Unit 1: UFactor: 0.28, SHG: 0.26, VLT: 0.47, CR: 60



Opening: 19.625" X 71"
 O.S.M.: 19.375" X 70.75"

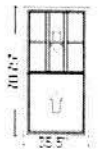
Tag: CONFERENCE ROOM

LINE #	DESCRIPTION	QTY	LIST PRICE	NET PRICE	EXTD. PRICE
--------	-------------	-----	------------	-----------	-------------

500-1

2

Walcott Replacement Double Hung
 35.5 X 70.75 Unit Size, White, Insul Low-E & Argon, DLO
 Width Equal, 6/1 Lite SDL, 7/8", White Simulated Divided
 Lite w/ Spacer Bar, 30.62 X 28.37 Clear Opening, 6.03
 SQFT, White Dual Lock, No Window Opening Control
 Device, White Standard Tilt Latch, Insert White Full Screen
 Applied
 w/Sill Extender
 Unit 1: UFactor: 0.28, SHG: 0.26, VLT: 0.47, CR: 60



Opening: 35.75" X 71"
 O.S.M.: 35.5" X 70.75"

Tag: CONFERENCE ROOM

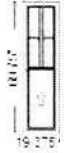
QUOTE #	STATUS	CUSTOMER PO#	DATE QUOTED
541995	None		7/19/2021 1:32:15 PM
QUOTED BY	TERMS	PROJECT NAME	QUOTE NAME
Alan Beasley		BOSEN LAW OFFICES	RICCI INSTALLS

LINE #	DESCRIPTION	QTY	LIST PRICE	NET PRICE	EXTD. PRICE
--------	-------------	-----	------------	-----------	-------------

600-1

4

Walcott Replacement Double Hung
 19.375 X 69.75 Unit Size, White, Insul Low-E & Argon,
 DLO Width Equal, 4/1 Lite SDL, 7/8", White Simulated
 Divided Lite w/ Spacer Bar, 14.5 X 29.37 Clear Opening,
 2.95 SQFT, White Single Lock, No Window Opening
 Control Device, White Standard Tilt Latch, Insert White Full
 Screen Applied
 w/Sill Extender
 Unit 1: UFactor: 0.28, SHG: 0.26, VLT: 0.47, CR: 60



Opening: 19.625" X 70"

O.S.M.: 19.375" X 69.75"

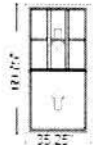
Tag: SHIP ROOM

LINE #	DESCRIPTION	QTY	LIST PRICE	NET PRICE	EXTD. PRICE
--------	-------------	-----	------------	-----------	-------------

700-1

1

Walcott Replacement Double Hung
 35.25 X 69.75 Unit Size, White, Insul Low-E & Argon, DLO
 Width Equal, 6/1 Lite SDL, 7/8", White Simulated Divided
 Lite w/ Spacer Bar, 30.37 X 27.87 Clear Opening, 5.87
 SQFT, White Dual Lock, No Window Opening Control
 Device, White Standard Tilt Latch, Insert White Full Screen
 Applied
 w/Sill Extender
 Unit 1: UFactor: 0.28, SHG: 0.26, VLT: 0.47, CR: 60



Opening: 35.5" X 70"

O.S.M.: 35.25" X 69.75"

Tag: SHIP ROOM

LINE #	DESCRIPTION	QTY	LIST PRICE	NET PRICE	EXTD. PRICE
--------	-------------	-----	------------	-----------	-------------

800-1

1

Walcott Replacement Double Hung
 17.5 X 70.75 Unit Size, White, Insul Low-E & Argon, DLO
 Width Equal, 4/1 Lite SDL, 7/8", White Simulated Divided
 Lite w/ Spacer Bar, 12.62 X 29.87 Clear Opening, 2.61
 SQFT, White Single Lock, No Window Opening Control
 Device, White Standard Tilt Latch, Insert White Full Screen
 Applied
 w/Sill Extender
 Unit 1: UFactor: 0.28, SHG: 0.26, VLT: 0.47, CR: 60



Opening: 17.75" X 71"

O.S.M.: 17.5" X 70.75"

Tag: BREAKROOM

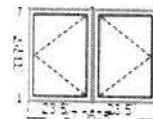
QUOTE #	STATUS	CUSTOMER PO#	DATE QUOTED
541995	None		7/19/2021 1:32:15 PM
QUOTED BY	TERMS	PROJECT NAME	QUOTE NAME
Alan Beasley		BOSEN LAW OFFICES	RICCI INSTALLS

LINE #	DESCRIPTION	QTY	LIST PRICE	NET PRICE	EXTD. PRICE
--------	-------------	-----	------------	-----------	-------------

900-1

1

Walcott New Construction Casement Narrow Vertical Mull
 23.5 X 33.75 Unit Size Left Operating; 23.5 X 33.75 Unit
 Size Right Operating, White, Insul Low-E & Argon, 11.93 X
 28.75 Clear Opening, 2.38 SQFT, No Window Opening
 Control Device, White Handle & Lock, White Screen
 Applied
 w/Nailing Flange, w/J Channel, No Exterior Casing
 Unit 1: UFactor: 0.26, SHG: 0.28, VLT: 0.51, CR: 61
 Energy Star Qualified (Northern)
 Unit 2: UFactor: 0.26, SHG: 0.28, VLT: 0.51, CR: 61
 Energy Star Qualified (Northern)



Opening: 47.5625" X 34.25"

O.S.M.: 47.0625" X 33.75"

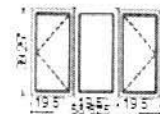
Tag: BREAKROOM

LINE #	DESCRIPTION	QTY	LIST PRICE	NET PRICE	EXTD. PRICE
--------	-------------	-----	------------	-----------	-------------

1000-1

1

Walcott New Construction Casement Narrow Vertical Mull
 19.5 X 39.25 Unit Size Left Operating, 7.93 X 34.25 Clear
 Opening, 1.88 SQFT, No Window Opening Control Device,
 White Handle & Lock, White Screen Applied; 19.5 X 39.25
 Unit Size Picture; 19.5 X 39.25 Unit Size Right Operating,
 7.93 X 34.25 Clear Opening, 1.88 SQFT, No Window
 Opening Control Device, White Handle & Lock, White
 Screen Applied, White, Insul Low-E & Argon
 w/Nailing Flange, w/J Channel, No Exterior Casing
 Unit 1: UFactor: 0.26, SHG: 0.28, VLT: 0.51, CR: 61
 Energy Star Qualified (Northern)
 Unit 2: UFactor: 0.25, SHG: 0.32, VLT: 0.58, CR: 60
 Energy Star Qualified (Northern)
 Unit 3: UFactor: 0.26, SHG: 0.28, VLT: 0.51, CR: 61
 Energy Star Qualified (Northern)



Opening: 59.125" X 39.75"

O.S.M.: 58.625" X 39.25"

Tag: BREAKROOM

LINE #	DESCRIPTION	QTY	LIST PRICE	NET PRICE	EXTD. PRICE
--------	-------------	-----	------------	-----------	-------------

1100-1

1

Walcott Replacement Double Hung
 16.75 X 55.75 Unit Size, White, Insul Low-E & Argon, DLO
 Width Equal, 4/1 Lite SDL, 7/8", White Simulated Divided
 Lite w/ Spacer Bar, 11.87 X 22.37 Clear Opening, 1.84
 SQFT, White Single Lock, No Window Opening Control
 Device, White Standard Tilt Latch, Insert White Full Screen
 Applied
 w/Sill Extender
 Unit 1: UFactor: 0.28, SHG: 0.26, VLT: 0.47, CR: 60



Opening: 17" X 56"

O.S.M.: 16.75" X 55.75"

Tag: POWDER ROOM

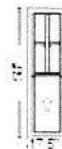
QUOTE #	STATUS	CUSTOMER PO#	DATE QUOTED
541995	None		7/19/2021 1:32:15 PM
QUOTED BY	TERMS	PROJECT NAME	QUOTE NAME
Alan Beasley		BOSEN LAW OFFICES	RICCI INSTALLS

LINE #	DESCRIPTION	QTY	LIST PRICE	NET PRICE	EXTD. PRICE
--------	-------------	-----	------------	-----------	-------------

1200-1

1

Walcott Replacement Double Hung
 17.5 X 58 Unit Size, White, Insul Low-E & Argon, DLO
 Width Equal, 4/1 Lite SDL, 7/8", White Simulated Divided
 Lite w/ Spacer Bar, 12.62 X 23.5 Clear Opening, 2.06 SQFT,
 White Single Lock, No Window Opening Control Device,
 White Standard Tilt Latch, Insert White Full Screen Applied
 w/Sill Extender
 Unit 1: UFactor: 0.28, SHG: 0.26, VLT: 0.47, CR: 60



Opening: 17.75" X 58.25"

O.S.M.: 17.5" X 58"

Tag: MAIL STATION

LINE #	DESCRIPTION	QTY	LIST PRICE	NET PRICE	EXTD. PRICE
--------	-------------	-----	------------	-----------	-------------

1300-1

1

Walcott Replacement Double Hung
 35.75 X 70.75 Unit Size, White, Insul Low-E & Argon, DLO
 Width Equal, 6/1 Lite SDL, 7/8", White Simulated Divided
 Lite w/ Spacer Bar, 30.87 X 28.37 Clear Opening, 6.08
 SQFT, White Dual Lock, No Window Opening Control
 Device, White Standard Tilt Latch, Insert White Full Screen
 Applied
 w/Sill Extender
 Unit 1: UFactor: 0.28, SHG: 0.26, VLT: 0.47, CR: 60



Opening: 36" X 71"

O.S.M.: 35.75" X 70.75"

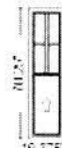
Tag: JOHN'S OFFICE

LINE #	DESCRIPTION	QTY	LIST PRICE	NET PRICE	EXTD. PRICE
--------	-------------	-----	------------	-----------	-------------

1400-1

3

Walcott Replacement Double Hung
 19.375 X 70.25 Unit Size, White, Insul Low-E & Argon,
 DLO Width Equal, 4/1 Lite SDL, 7/8", White Simulated
 Divided Lite w/ Spacer Bar, 14.5 X 29.62 Clear Opening,
 2.98 SQFT, White Single Lock, No Window Opening
 Control Device, White Standard Tilt Latch, Insert White Full
 Screen Applied
 w/Sill Extender
 Unit 1: UFactor: 0.28, SHG: 0.26, VLT: 0.47, CR: 60



Opening: 19.625" X 70.5"

O.S.M.: 19.375" X 70.25"

Tag: JOHN'S OFFICE

QUOTE #	STATUS	CUSTOMER PO#	DATE QUOTED
541995	None		7/19/2021 1:32:15 PM
QUOTED BY	TERMS	PROJECT NAME	QUOTE NAME
Alan Beasley		BOSEN LAW OFFICES	RICCI INSTALLS

LINE #	DESCRIPTION	QTY	LIST PRICE	NET PRICE	EXTD. PRICE
--------	-------------	-----	------------	-----------	-------------

1500-1

1

Walcott Replacement Double Hung
 35.375 X 70.25 Unit Size, White, Insul Low-E & Argon,
 DLO Width Equal, 6/1 Lite SDL, 7/8", White Simulated
 Divided Lite w/ Spacer Bar, 30.5 X 28.12 Clear Opening,
 5.95 SQFT, White Dual Lock, No Window Opening Control
 Device, White Standard Tilt Latch, Insert White Full Screen
 Applied
 w/Sill Extender
 Unit 1: UFactor: 0.28, SHG: 0.26, VLT: 0.47, CR: 60



Opening: 35.625" X 70.5"
 O.S.M.: 35.375" X 70.25"

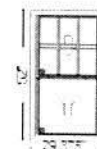
Tag: JOHN'S OFFICE

LINE #	DESCRIPTION	QTY	LIST PRICE	NET PRICE	EXTD. PRICE
--------	-------------	-----	------------	-----------	-------------

1600-1

2

Walcott Replacement Double Hung
 29.375 X 52 Unit Size, White, Insul Low-E & Argon
 Tempered, DLO Width Equal, 6/1 Lite SDL, 7/8", White
 Simulated Divided Lite w/ Spacer Bar, 24.5 X 20.5 Clear
 Opening, 3.48 SQFT, White Single Lock, No Window
 Opening Control Device, White Standard Tilt Latch, Insert
 White Full Screen Applied
 w/Sill Extender
 Unit 1: UFactor: 0.3, SHG: 0.27, VLT: 0.49, CR: 56



Mathews Brothers' Windows specified with Tempered Glass
 cannot be canceled or modified once an order is placed.
 There will be no grace period provided for Windows
 specified with Tempered Glass as they will enter into a
 production schedule immediately. Please review the
 specifications for this Window with Tempered Glass
 carefully to ensure they are correct prior to ordering.

Opening: 29.625" X 52.25"
 O.S.M.: 29.375" X 52"

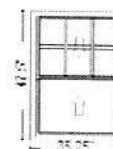
Tag: STAIR WELL

LINE #	DESCRIPTION	QTY	LIST PRICE	NET PRICE	EXTD. PRICE
--------	-------------	-----	------------	-----------	-------------

1700-1

1

Walcott Replacement Double Hung
 35.25 X 47.5 Unit Size, White, Insul Low-E & Argon, DLO
 Width Equal, 6/1 Lite SDL, 7/8", White Simulated Divided
 Lite w/ Spacer Bar, 30.37 X 18.25 Clear Opening, 3.84
 SQFT, White Dual Lock, No Window Opening Control
 Device, White Standard Tilt Latch, Insert White Full Screen
 Applied
 w/Sill Extender
 Unit 1: UFactor: 0.28, SHG: 0.26, VLT: 0.47, CR: 60



Opening: 35.5" X 47.75"
 O.S.M.: 35.25" X 47.5"

Tag: 2ND FLOOR
BATHROOM

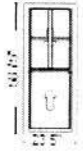
QUOTE #	STATUS	CUSTOMER PO#	DATE QUOTED
541995	None		7/19/2021 1:32:15 PM
QUOTED BY	TERMS	PROJECT NAME	QUOTE NAME
Alan Beasley		BOSEN LAW OFFICES	RICCI INSTALLS

LINE #	DESCRIPTION	QTY	LIST PRICE	NET PRICE	EXTD. PRICE
--------	-------------	-----	------------	-----------	-------------

1800-1

2

Walcott Replacement Double Hung
 23.5 X 58.75 Unit Size, White, Insul Low-E & Argon, DLO
 Width Equal, 4/1 Lite SDL, 7/8", White Simulated Divided
 Lite w/ Spacer Bar, 18.62 X 23.87 Clear Opening, 3.08
 SQFT, White Single Lock, No Window Opening Control
 Device, White Standard Tilt Latch, Insert White Full Screen
 Applied
 w/Sill Extender
 Unit 1: UFactor: 0.28, SHG: 0.26, VLT: 0.47, CR: 60



Opening: 23.75" X 59"
 O.S.M.: 23.5" X 58.75"

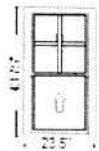
Tag: GREEN OFFICE
 MOLLY

LINE #	DESCRIPTION	QTY	LIST PRICE	NET PRICE	EXTD. PRICE
--------	-------------	-----	------------	-----------	-------------

1900-1

1

Walcott Replacement Double Hung
 23.5 X 43.75 Unit Size, White, Insul Low-E & Argon, DLO
 Width Equal, 4/1 Lite SDL, 7/8", White Simulated Divided
 Lite w/ Spacer Bar, 18.62 X 16.37 Clear Opening, 2.11
 SQFT, White Single Lock, No Window Opening Control
 Device, White Standard Tilt Latch, Insert White Full Screen
 Applied
 w/Sill Extender
 Unit 1: UFactor: 0.28, SHG: 0.26, VLT: 0.47, CR: 60



Opening: 23.75" X 44"
 O.S.M.: 23.5" X 43.75"

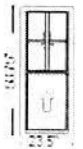
Tag: GREEN OFFICE
 MOLLY

LINE #	DESCRIPTION	QTY	LIST PRICE	NET PRICE	EXTD. PRICE
--------	-------------	-----	------------	-----------	-------------

2000-1

2

Walcott Replacement Double Hung
 23.5 X 58.75 Unit Size, White, Insul Low-E & Argon, DLO
 Width Equal, 4/1 Lite SDL, 7/8", White Simulated Divided
 Lite w/ Spacer Bar, 18.62 X 23.87 Clear Opening, 3.08
 SQFT, White Single Lock, No Window Opening Control
 Device, White Standard Tilt Latch, Insert White Full Screen
 Applied
 w/Sill Extender
 Unit 1: UFactor: 0.28, SHG: 0.26, VLT: 0.47, CR: 60



Opening: 23.75" X 59"
 O.S.M.: 23.5" X 58.75"

Tag: GREEN OFFICE
 MIDDLE

QUOTE #	STATUS	CUSTOMER PO#	DATE QUOTED
541995	None		7/19/2021 1:32:15 PM
QUOTED BY	TERMS	PROJECT NAME	QUOTE NAME
Alan Beasley		BOSEN LAW OFFICES	RICCI INSTALLS

LINE #	DESCRIPTION	QTY	LIST PRICE	NET PRICE	EXTD. PRICE
--------	-------------	-----	------------	-----------	-------------

2100-1

1

Walcott Replacement Double Hung
 39.375 X 52.25 Unit Size, White, Insul Low-E & Argon,
 DLO Width Equal, 6/1 Lite SDL, 7/8", White Simulated
 Divided Lite w/ Spacer Bar, 34.5 X 19.12 Clear Opening,
 4.58 SQFT, White Dual Lock, No Window Opening Control
 Device, White Standard Tilt Latch, Insert White Full Screen
 Applied
 w/Sill Extender
 Unit 1: UFactor: 0.28, SHG: 0.26, VLT: 0.47, CR: 60



Opening: 39.625" X 52.5"
 O.S.M.: 39.375" X 52.25"

Tag: FRONT LEFT
 CORNER

LINE #	DESCRIPTION	QTY	LIST PRICE	NET PRICE	EXTD. PRICE
--------	-------------	-----	------------	-----------	-------------

2200-1

1

Walcott Replacement Double Hung
 23.75 X 59.25 Unit Size, White, Insul Low-E & Argon, DLO
 Width Equal, 4/1 Lite SDL, 7/8", White Simulated Divided
 Lite w/ Spacer Bar, 18.87 X 24.12 Clear Opening, 3.16
 SQFT, White Single Lock, No Window Opening Control
 Device, White Standard Tilt Latch, Insert White Full Screen
 Applied
 w/Sill Extender
 Unit 1: UFactor: 0.28, SHG: 0.26, VLT: 0.47, CR: 60



Opening: 24" X 59.5"
 O.S.M.: 23.75" X 59.25"

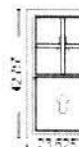
Tag: FRONT LEFT
 CORNER

LINE #	DESCRIPTION	QTY	LIST PRICE	NET PRICE	EXTD. PRICE
--------	-------------	-----	------------	-----------	-------------

2300-1

1

Walcott Replacement Double Hung
 23.625 X 42.75 Unit Size, White, Insul Low-E & Argon,
 DLO Width Equal, 4/1 Lite SDL, 7/8", White Simulated
 Divided Lite w/ Spacer Bar, 18.75 X 15.87 Clear Opening,
 2.06 SQFT, White Single Lock, No Window Opening
 Control Device, White Standard Tilt Latch, Insert White Full
 Screen Applied
 w/Sill Extender
 Unit 1: UFactor: 0.28, SHG: 0.26, VLT: 0.47, CR: 60



Opening: 23.875" X 43"
 O.S.M.: 23.625" X 42.75"

Tag: RUST OFFICE

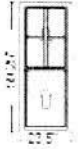
QUOTE #	STATUS	CUSTOMER PO#	DATE QUOTED
541995	None		7/19/2021 1:32:15 PM
QUOTED BY	TERMS	PROJECT NAME	QUOTE NAME
Alan Beasley		BOSEN LAW OFFICES	RICCI INSTALLS

LINE #	DESCRIPTION	QTY	LIST PRICE	NET PRICE	EXTD. PRICE
--------	-------------	-----	------------	-----------	-------------

2400-1

2

Walcott Replacement Double Hung
 23.5 X 59.25 Unit Size, White, Insul Low-E & Argon, DLO
 Width Equal, 4/1 Lite SDL, 7/8", White Simulated Divided
 Lite w/ Spacer Bar, 18.62 X 24.12 Clear Opening, 3.12
 SQFT, White Single Lock, No Window Opening Control
 Device, White Standard Tilt Latch, Insert White Full Screen
 Applied
 w/Sill Extender
 Unit 1: UFactor: 0.28, SHG: 0.26, VLT: 0.47, CR: 60



Opening: 23.75" X 59.5"
 O.S.M.: 23.5" X 59.25"

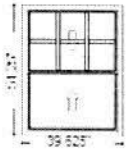
Tag: FRONT RIGHT
 CORNER

LINE #	DESCRIPTION	QTY	LIST PRICE	NET PRICE	EXTD. PRICE
--------	-------------	-----	------------	-----------	-------------

2500-1

1

Walcott Replacement Double Hung
 39.625 X 51.25 Unit Size, White, Insul Low-E & Argon,
 DLO Width Equal, 6/1 Lite SDL, 7/8", White Simulated
 Divided Lite w/ Spacer Bar, 34.75 X 18.62 Clear Opening,
 4.49 SQFT, White Dual Lock, No Window Opening Control
 Device, White Standard Tilt Latch, Insert White Full Screen
 Applied
 w/Sill Extender
 Unit 1: UFactor: 0.28, SHG: 0.26, VLT: 0.47, CR: 60



Opening: 39.875" X 51.5"
 O.S.M.: 39.625" X 51.25"

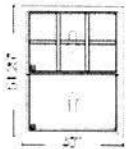
Tag: FRONT RIGHT
 CORNER

LINE #	DESCRIPTION	QTY	LIST PRICE	NET PRICE	EXTD. PRICE
--------	-------------	-----	------------	-----------	-------------

2600-1

1

Walcott Replacement Double Hung
 40 X 51.25 Unit Size, White, Insul Low-E & Argon
 Tempered, DLO Width Equal, 6/1 Lite SDL, 7/8", White
 Simulated Divided Lite w/ Spacer Bar, 35.12 X 20.12 Clear
 Opening, 4.9 SQFT, White Dual Lock, No Window Opening
 Control Device, White Standard Tilt Latch, Insert White Full
 Screen Applied
 w/Sill Extender
 Unit 1: UFactor: 0.3, SHG: 0.27, VLT: 0.49, CR: 56



Mathews Brothers' Windows specified with Tempered Glass
 cannot be canceled or modified once an order is placed.
 There will be no grace period provided for Windows
 specified with Tempered Glass as they will enter into a
 production schedule immediately. Please review the
 specifications for this Window with Tempered Glass
 carefully to ensure they are correct prior to ordering.

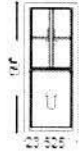
Opening: 40.25" X 51.5"
 O.S.M.: 40" X 51.25"

Tag: FRONT RIGHT
 CORNER

QUOTE #	STATUS	CUSTOMER PO#	DATE QUOTED
541995	None		7/19/2021 1:32:15 PM
QUOTED BY	TERMS	PROJECT NAME	QUOTE NAME
Alan Beasley		BOSEN LAW OFFICES	RICCI INSTALLS

LINE #	DESCRIPTION	QTY	LIST PRICE	NET PRICE	EXTD. PRICE
2700-1		1			

Walcott Replacement Double Hung
 23.625 X 59 Unit Size, White, Insul Low-E & Argon, DLO
 Width Equal, 4/1 Lite SDL, 7/8", White Simulated Divided
 Lite w/ Spacer Bar, 18.75 X 24 Clear Opening, 3.12 SQFT,
 White Single Lock, No Window Opening Control Device,
 White Standard Tilt Latch, Insert White Full Screen Applied
 w/Sill Extender
 Unit 1: UFactor: 0.28, SHG: 0.26, VLT: 0.47, CR: 60



Opening: 23.875" X 59.25"
 O.S.M.: 23.625" X 59"

Tag: SMALL OFFICE

All Prices are net. Quote is good for thirty days. Please review all quantities, specifications, and information for accuracy. Special orders can not be returned for credit. Signature implies acceptance of these specifications. Your order will not be processed without authorized signature.

Thank you for all of your efforts!

CUSTOMER SIGNATURE _____ DATE _____

We appreciate the opportunity to provide you with this quote!

Integrity is ingrained
IN EVERYTHING WE DO.

HardiePlank®
Lap Siding
Evening Blue



The advanced design of HZ5® lap siding improves drainage from top to bottom.

In addition to the enhanced moisture resistance of our product formulation, HardiePlank® HZ5® lap siding features a modified profile with a sloped top and bullnose drip edge for improved drainage over the entire outer face of the board.



Sloped Top

Positive slope at top drains moisture to outer face of lap



Profiled Drip Edge

Bottom bullnose drip edge allows moisture to drain away from lap

Finishing Technology

Primer

A quality primer is the first step to ensuring that the paint color you select beautifully expresses a home's true character now — and for years to come. Our distinctive primer is climate-tested and engineered to enhance the performance of paint on James Hardie® fiber cement siding products. It helps to provide consistent, long-lasting paint adhesion, even in the most demanding conditions.

ColorPlus® Technology

Our advanced ColorPlus® Technology finishes deliver the ultimate in aesthetics and performance. Our products aren't simply painted at the factory. Our proprietary coatings are baked onto the board, creating a vibrant, consistent finish that performs better, lasts longer and looks brighter on your homes.



Exceptional finish adhesion

Our proprietary coating is engineered for exceptional adhesion to our substrate and applied to the surface, edges and features for durable performance.



Superior color retention

Finish is cured onto boards for a stronger bond, which allows for exceptional resistance to cracking, peeling and chipping.



Superior UV resistance

ColorPlus® Technology finishes retain vibrancy longer when compared to vinyl siding and typical field paints on other siding products.



ColorPlus®
Technology



James Hardie Complete Exterior™

Top to bottom, our exterior product line is defined by excellent performance, aesthetics and design options.

Provide protection from the elements, showcase a homeowner's individual style and install peace of mind with exceptional warranties through a single, trusted manufacturer.



HardieShingle®
Siding



HardiePanel® Vertical
Siding & HardieTrim®
Batten Boards



HardiePlank®
Lap Siding



HardieTrim®
Boards



HardieSoffit®
Panels

HardiePlank®

Sleek and strong, HardiePlank® lap siding is not just our best-selling product – it's the most popular brand of siding in America.

With a full spectrum of colors and textures, homeowners can enjoy protection from the elements and the versatility to make their dream home a reality. From Victorians to Colonials, HardiePlank lap siding sets the standard in exterior cladding.

HardieTrim®
Boards
Arctic White

HardiePlank®
Lap Siding
Select Cedarmill®
Khaki Brown

A classic look for
THE HOME OF THEIR DREAMS.

HardiePlank®

Thickness 5/16 in

Length 12 ft planks

SELECT CEDARMILL® & SMOOTH

Width	5.25 in	6.25 in	7.25 in	8.25 in
Exposure	4 in	5 in	6 in	7 in
Prime Pcs/Pallet	360	308	252	230
ColorPlus Pcs/Pallet	324	280	252	210
Pcs/Sq	25.0	20.0	16.7	14.3

SELECT CEDARMILL®



Width	5.25 in	6.25 in	7.25 in	8.25 in
STATEMENT COLLECTION™	✓	✓		
DREAM COLLECTION™	✓	✓	✓	✓
PRIME	✓	✓	✓	✓

SMOOTH



Width	5.25 in	6.25 in	7.25 in	8.25 in
STATEMENT COLLECTION™	✓	✓		
DREAM COLLECTION™	✓	✓	✓	✓
PRIME	✓	✓	✓	✓

BEADED CEDARMILL®

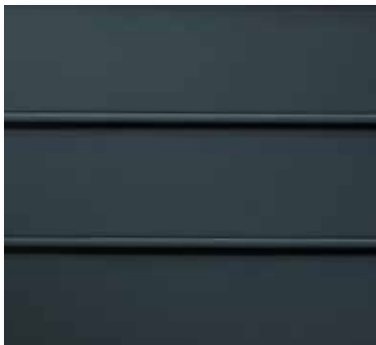


BEADED CEDARMILL® & BEADED SMOOTH

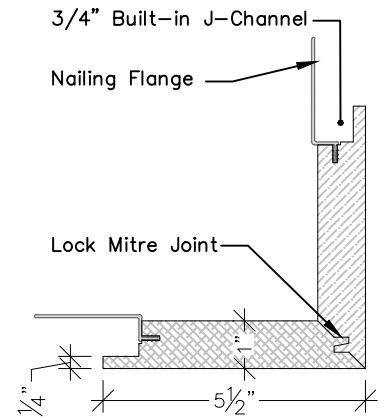
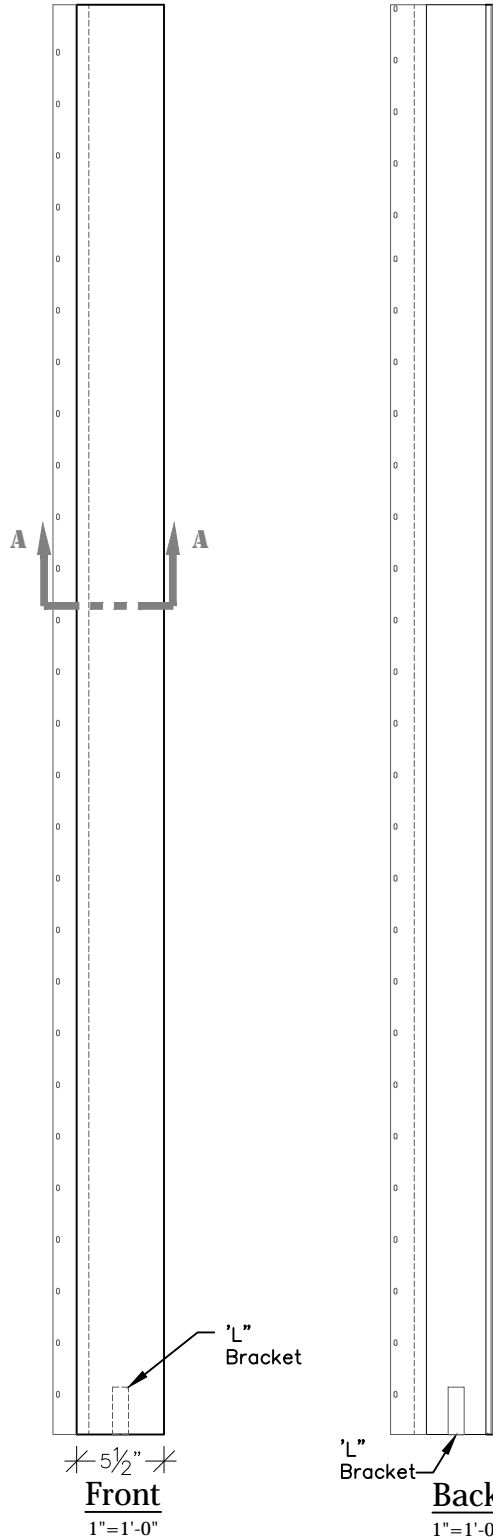
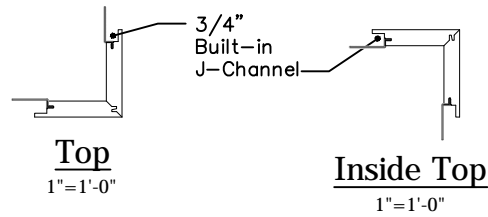
Width	8.25 in
Exposure	7 in
Prime Pcs/Pallet	240
ColorPlus Pcs/Pallet	210
Pcs/Sq	14.3

STATEMENT COLLECTION™	
DREAM COLLECTION™	✓
PRIME	✓

BEADED SMOOTH



APPENDIX 03



Section A-A
3"=1'-0"

Complete With:
Stainless Steel Support Brackets
Water Management System
Continuous Nailing Flange
Stainless Steel Screws

**Available in
10 foot
and
20 foot Lengths**



860.758.7900
trimolutions.net

Trim Solutions, LLC.
132 Main Street, P.O. Box 739
East Windsor, CT 06088

OSC-1

(QUICKTRIM)