



Property Information

Property ID 0103-0059-0000
Location 11 MEETING HOUSE HILL RD
Owner KARABELAS ARGERIS



**MAP FOR REFERENCE ONLY
NOT A LEGAL DOCUMENT**

City of Portsmouth, NH makes no claims and no warranties, expressed or implied, concerning the validity or accuracy of the GIS data presented on this map.

Geometry updated 4/1/2019
Data updated 7/17/2019

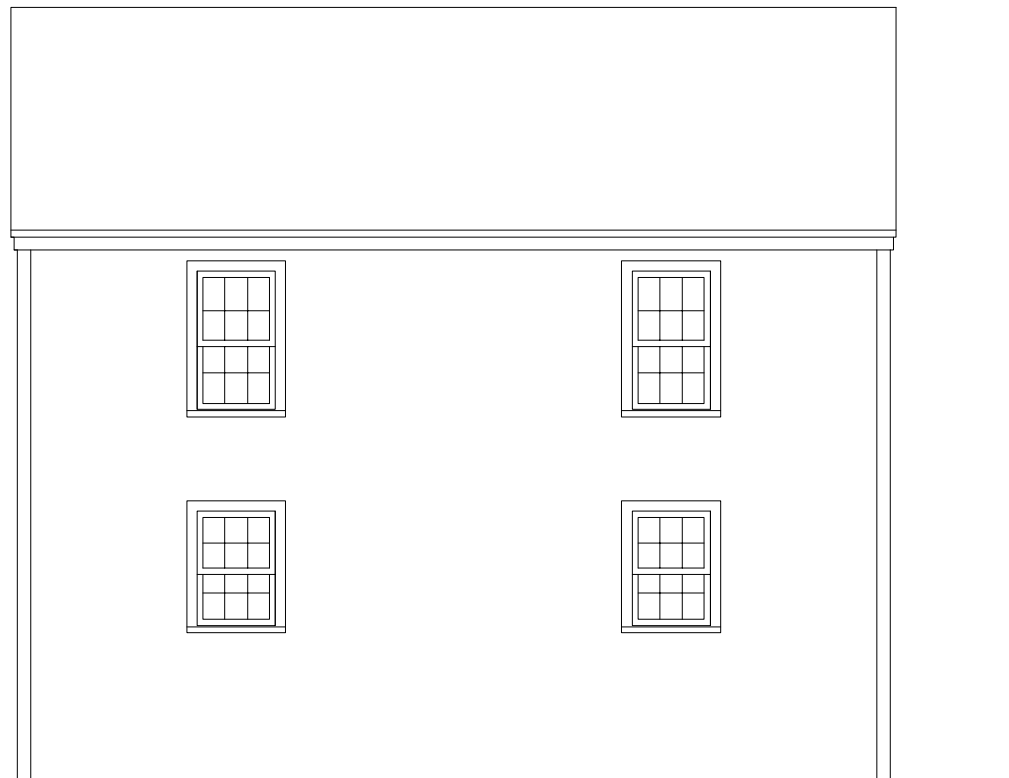


Existing Photo



Neighborhood inspiration for proposed rebuild

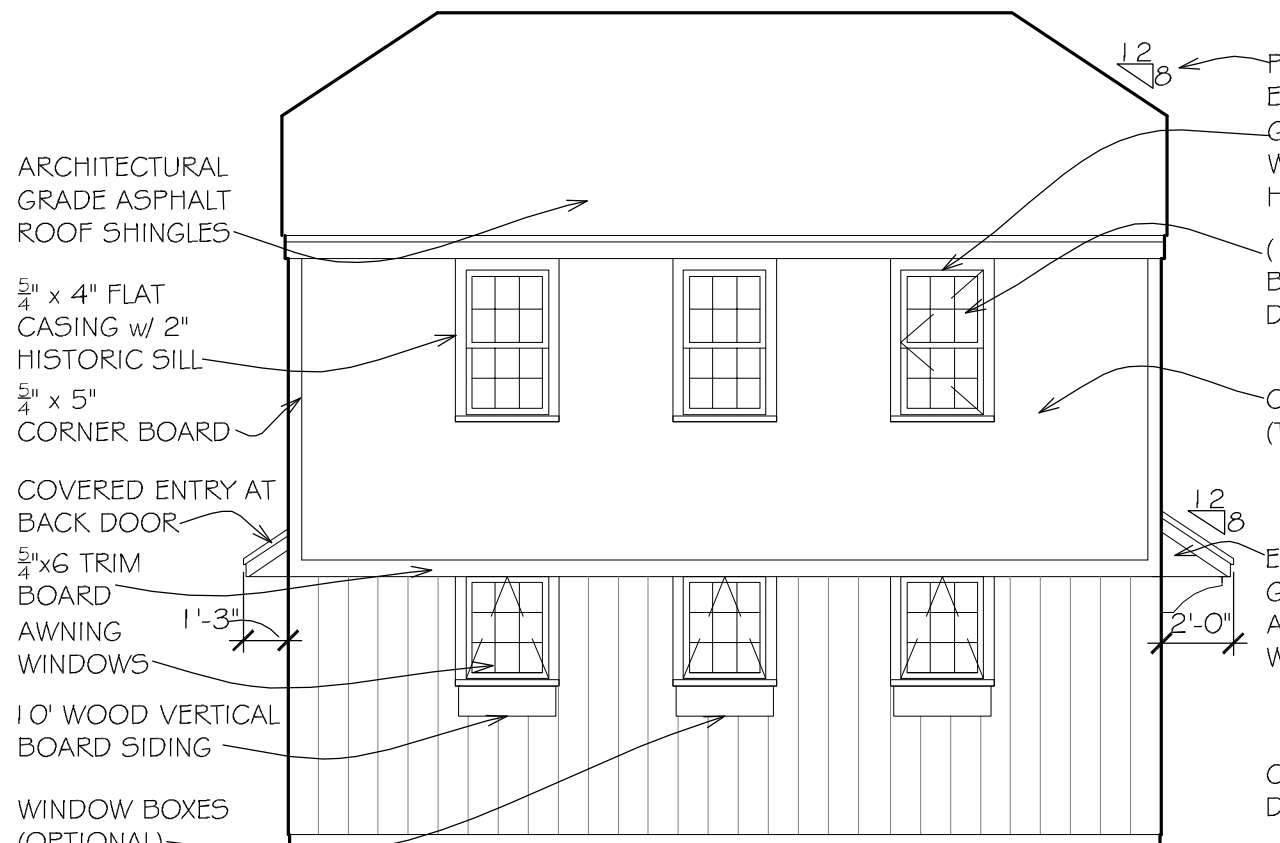




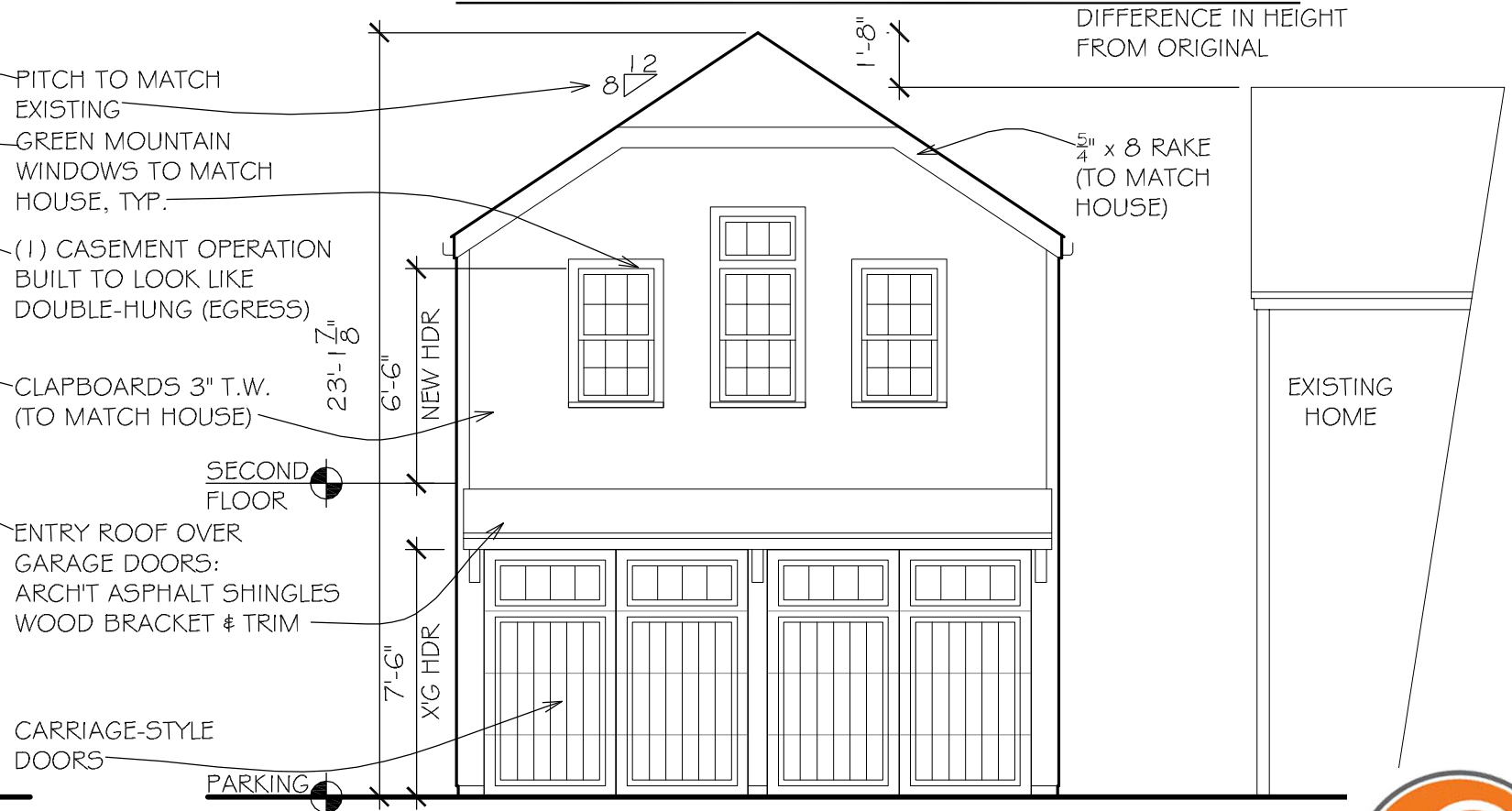
EXISTING MANNING ST. ELEVATION



EXISTING MEETING HOUSE HILL ELEVATION



PROPOSED MANNING ST. ELEVATION



PROPOSED MEETING HOUSE HILL ELEVATION

11 Meeting House Hill, Portsmouth, New Hampshire

SOMMA Studios 603/766.3760

EXISTING/ PROPOSED ELEVATIONS

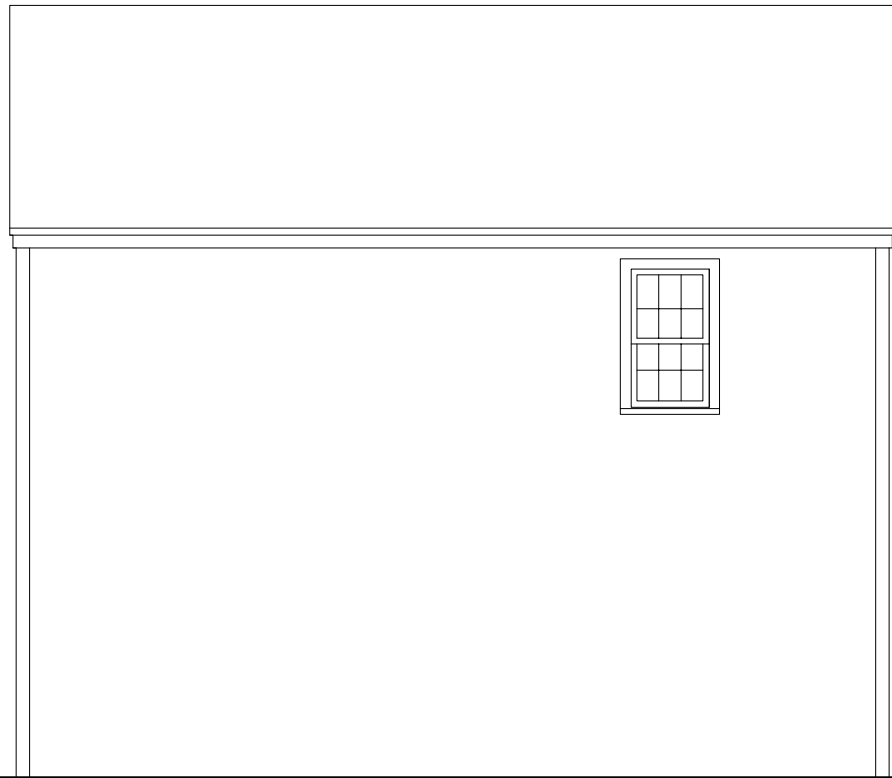
SCALE: $\frac{3}{16}$ "

HDC/WS

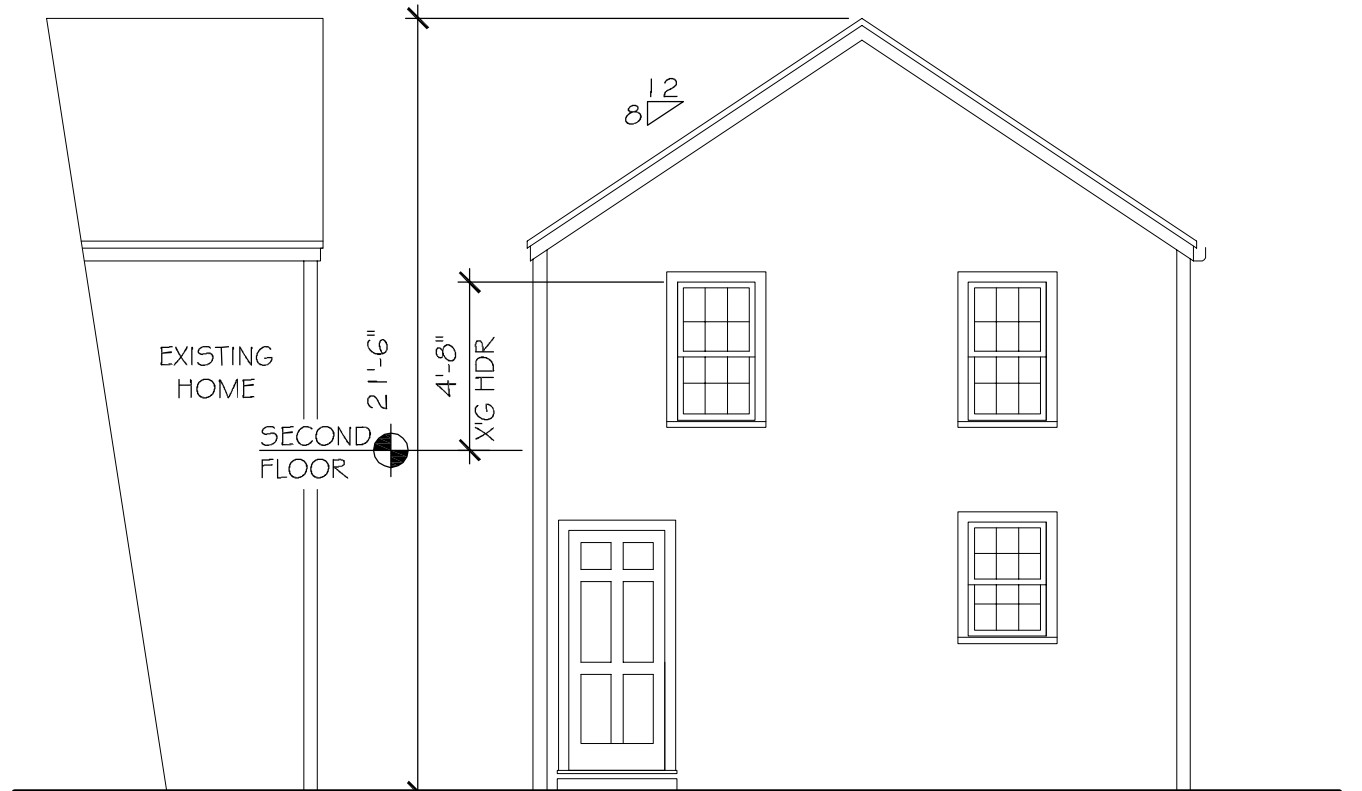
12.201

SH. 3

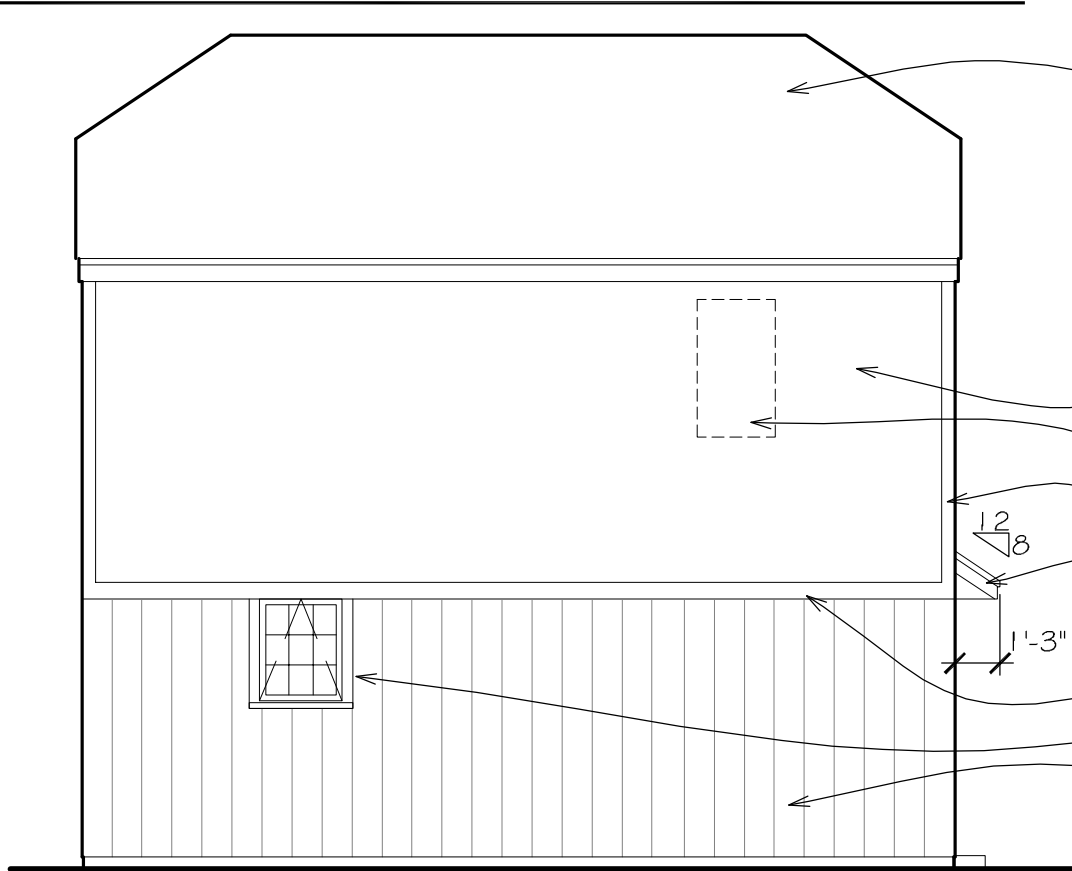




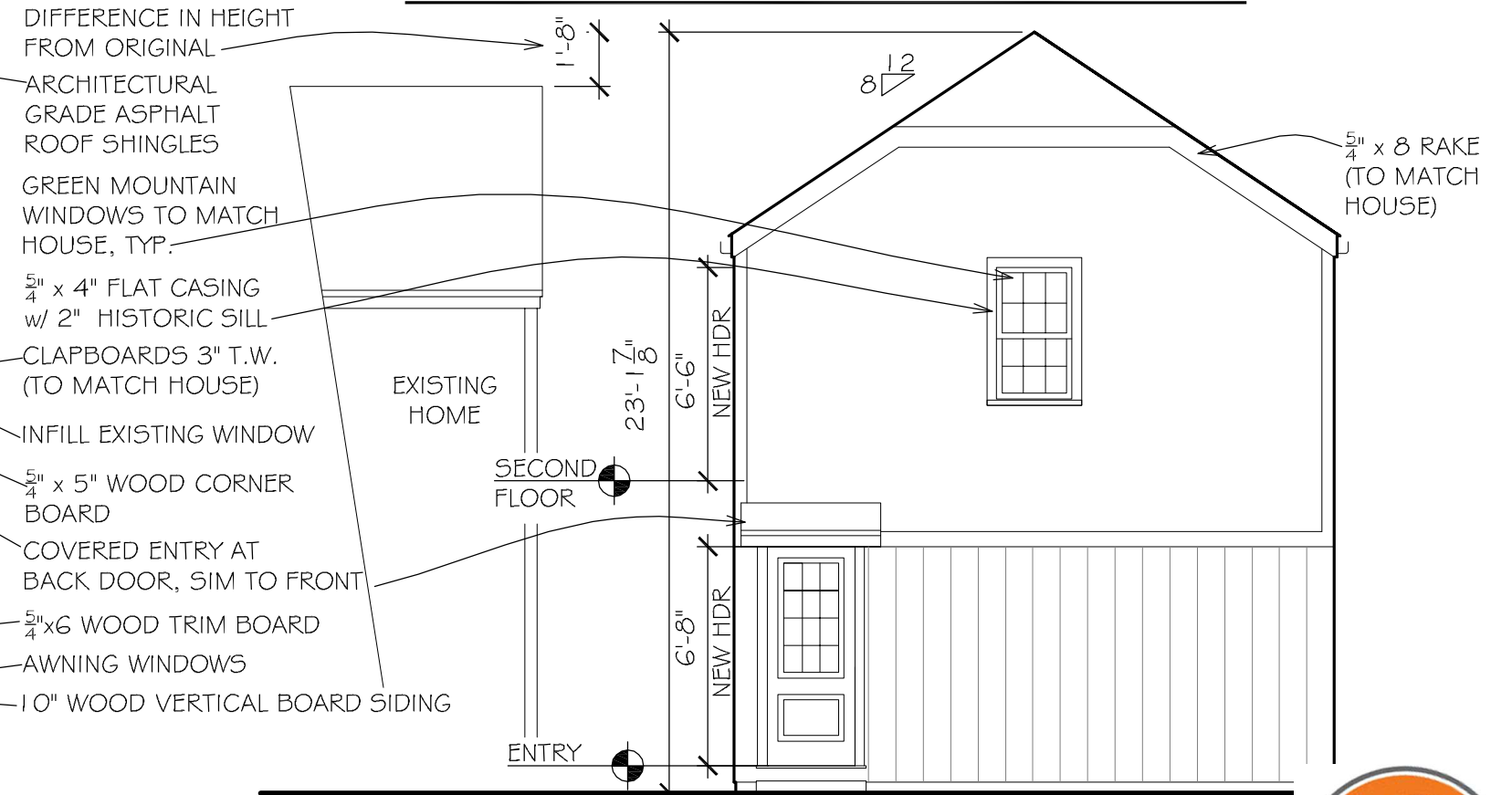
EXISTING HOUSE FACING ELEVATION



EXISTING BACK ELEVATION



PROPOSED HOUSE FACING ELEVATION



PROPOSED BACK ELEVATION ELEVATION

- DIFFERENCE IN HEIGHT FROM ORIGINAL
- ARCHITECTURAL GRADE ASPHALT ROOF SHINGLES
- GREEN MOUNTAIN WINDOWS TO MATCH HOUSE, TYP.
- 5/4 x 4" FLAT CASING w/ 2" HISTORIC SILL
- CLAPBOARDS 3" T.W. (TO MATCH HOUSE)
- INFILL EXISTING WINDOW
- 5/4 x 5" WOOD CORNER BOARD
- COVERED ENTRY AT BACK DOOR, SIM TO FRONT
- 5/4 x 6" WOOD TRIM BOARD
- AWNING WINDOWS
- 1 0" WOOD VERTICAL BOARD SIDING

11 Meeting House Hill, Portsmouth, New Hampshire

SOMMA Studios 603/766.3760

EXISTING/ PROPOSEDELEVATIONS

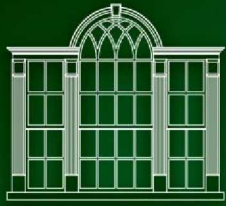
SCALE: 3/16"

HDC/WS

12.201

SH. 4





GREEN MOUNTAIN
WINDOW & DOOR™
COMPANY

News

NEW CONSTRUCTION



GREEN MOUNTAIN WINDOW SPECIALIZES IN NEW CONSTRUCTION WINDOW SOLUTIONS FOR BUILDINGS DESIGNED TO MATCH THE NORTHEAST'S UNIQUE ARCHITECTURAL STYLE. OUR WINDOWS ARE DESIGNED TO BLEND THE DETAILS AND PATTERNS ONCE USED BY LOCAL CRAFTSMAN IN NORTHEASTERN SASH MILLS WITH THE LATEST ENERGY PERFORMANCE TECHNOLOGY.

TWO DIFFERENT NEW CONSTRUCTION SYSTEMS:

- MILESTONE SERIES FOR HISTORICAL ACCURACY AND SUPERIOR ENERGY PERFORMANCE
- CLASSIC SERIES FOR BUDGET DRIVEN PROJECTS THAT STILL DEMAND CORRECT WINDOW PROPORTIONS AND GREAT ENERGY EFFICIENCY



We offer two different product lines to fit any budget:



1. Milestone Series Double Hung: This is the most traditional looking double hung window on the market. The sash and frame details are all proportioned to match the historic widows used around the northeast in the 19th and early 20th century. Modern materials such as vinyl and metal are concealed by our exclusive frame design. The sash can tilt in by releasing our hidden release latches. Our hardware options mimic period appropriate design. Options of 5/8", 7/8" or 1 1/4" wide muntins allow you to design to the architectural period of your choice. And our sash is engineered to hide the fact that it holds the most energy efficient glazing available in a narrow glazing pocket; often people don't even realize that it is insulated glass.

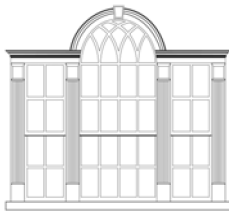
2. Milestone Series Casement / Awning: Do you hate the look and operation of modern crank out hardware? Then this window was designed with you in mind. This is a push out system with hardware to hold the sash in any open position. Wide stiles and rails create an old world charm. And a wood framed screen on the interior compliments the traditional design. We offer a concealed friction hinge version and a butt hinge with a sash stay bar version. The window to the right shows the butt hinge / stay bar option on a French Casement (two sash in one frame).



3. Classic Series Double Hung: With this window you won't be sacrificing much to satisfy a more limited budget. The main difference between the Classic and Milestone double hung is the use of exposed vinyl tracks on the sides of the frame to hold the sash in place. These vinyl tracks make the sash a little more difficult to tilt in, are slightly less air tight and are less historic looking than the Milestone system. However, if your windows are painted white the vinyl will blend right in and no one will know that you paid less since all other features and options are the same as the Milestone. Classic window with transom in photo to the left.

4. Classic Series Casement / Awning: This window line has the roto crank hardware, narrow stiles / rails, and aluminum framed interior screen that is commonly found in modern casement and awning windows. However, creative use of our trim packages and muntin options will still make these windows draw attention. To the right is a Classic Series casement with a wood shutter.





Green Mountain Window Co.

*Having Trouble Finding Traditional Style Windows That Meet Egress Code?
Problem Solved!*



Green Mountain Window's DH Style Egress Window[®]

Meets Egress with Windows As Small As 2'-0" x 3'-10" Sash Size (2' 2" x 4' 0" Frame Size)

Matches the Glazing of a Double Hung with Offset Glass for Top and Bottom Lites

Matches the Dual Sash Appearance of a Double Hung with Offset Sash Plane on Exterior

Available as a new construction window (shown above) or as an insert replacement unit. Any divided lite pattern available (2/2, 6/6, 12/12, etc) with glass sizes and stiles / rail dimensions that match traditional double hung windows. Optional meeting rail sash lock (shown above).

Patents Pending

These drawings, details, photos and specifications are the exclusive property of Green Mountain Window Company. These drawings, details, photos and specifications shall only be used for specifying Green Mountain Window Company products and for no other purposes, other than use by the US Patent and Trademark Office. No other use or reproduction of these drawings and specifications shall be permitted in any form, whether by electronic, mechanical, photocopying, recording or other means, without the prior written consent of Green Mountain Window, and any unauthorized use or reproduction is strictly prohibited.