



11/14/19

Vince Lombardi, Chairman
Historic District Commission
City of Portsmouth, NH

Re Lot 2, 55 Lafayette Road

Attachments:
Plans dated 11/11/19
Specifications Dated 11/14/19
Submittals for Materials and Colors

Dear Commissioners,

Attached is our revised application for the new home proposed for this location.

Included are a few revisions from the previous plans and additions to the submittals. These include the following:

Front Entrance: The front entrance proportions, columns and trim have been simplified in a way that we think is consistent with the rest of the home. These can be seen on the Front Elevation and are described in the Specifications. A more colonial style entrance is included in the 8 ½ x 11 submittals should the board prefer that style.

Transom Window: The twin transom window in the Dining Room has been deleted.

Stud Pockets: Stud pockets and Azek mull trim have been added to the twin windows. The mull trim is 1x5 (4 ½) to match the casing.

Elevations of neighboring homes. We hired TF Moran to survey the first floor elevations and roof ridge elevations for the neighboring homes. Attached is their stamped report in the form of a chart. Since the pictures introduced inaccuracies and 3D modeling was impractical, the data is presented in the chart.

The attached Submittals cover the materials we are requesting to be approved. We have tried to include submittals for all materials and colors to support a thorough review.

Thank you for your consideration and suggestions on this project.

Sincerely,

A handwritten signature in cursive script that reads "Joe Caldarola". The signature is written in dark ink and is positioned above the printed name and title.

Joseph Caldarola
President



Exterior Specifications
Lot 2, 55 Lafayette Road, Portsmouth, NH
11-14-2019

The following Specifications are submitted for Approval

1. Siding:

Hardie Lap Siding, Smooth, 4" exposure.
Color "A": Prefinished in Aged Pewter
Color "B": Field Painted Ben Moore Kendall Charcoal HC 166
See Elevations for locations

2. Windows:

Sanford Hills. Historically accurate vinyl windows by Mathews Brothers. SDL putty-profile grilles, black painted exterior sash and grille, white frame, full screens

3. Window Trim:

1x5 Klear PVC, screws and plugs, applied on 1x4 PT to create siding rabbit.
Klear 7435 Historic Sill

4. Front Door Trim:

5/4x6 Primed Pine, rabbited for siding

5. Corners:

8" rabbited corners, premade in PVC, Azek or equal, applied with screws and plugs
6" rabbited corners on dormers and garage

6. Mudsill:

1x8 Klear PVC per elevations

7. Freeze

1x4 Klear PVC

8. Soffit:

Klear PVC, 1/2" x 18' panels

9. Fascia

Klear PVC 1x6 and 1x3

10. Roofing

IKO Cambridge Architectural Shingles in Dual Black

11. Front and Walk-out Doors:

Front Door: Fir 4 Panel door F-2044. Finished with clear poly on fir toner

Walkout Door: Insulated Steel 4 panel door

12. Garage Door

Door: Amarr Carraige Court Overlay Door with grilles as shown

Trim: 1x6 Klear PVC, screws and plugs, on 1x4 PT Spacers

13. Patio Door

Kasson and Keller/or Mathews Brothers 9' vinyl slider, black exterior, .28 glass.

14. Porch Landing and Steps

Risers: 1x8 Klear PVC

Treads: Aeratis T&G composite porch flooring, 3 ¼ " coverage, field painted.

Railings: None

15. Front Porch Columns and Trim

Simple 11" columns per the front elevation. 11" Frieze

First choice for the columns is 11" square in wood

Other choices are 9"-11" tapered wood, or 10" round fiberglass.

A more colonial style entrance is included in the 8 ½ x 11 submittals should the Board prefer that style.

16. Rear Deck and Steps

1x8 Azek Deck Wrap and Risers

Decking: Azek Select Pebble Grey

Railings: Expanse Select white PVC railing and balusters. 4x4 post wraps and caps

17: Walk and Landscape Steps

Techo Block Blu 80 6 ½ x 13 in Shale Grey, or equal. Steps: Granite Steps

18. Front Planter

Cambridge Amortec Matrix wall stone, Bluestone Blend or native stone equal.

19. AC Condenser

Type and location: York YCD mounted on pad on ground

20. Vents

For bath fans, range vent, gas furnace, and fireplace, as drawn

22. Fence

4' Cedar picket fence

23. Light Fixtures

A and B fixtures per submittals

Sidewalk & First Floor & Building Ridge Heights

Measurements taken at the following locations of the houses indicated
 The sidewalk elevation at the C/L of the driveway for Lot 2 is set at 0.0
 Approximate locations of the measurement points are shown on the attached tax map

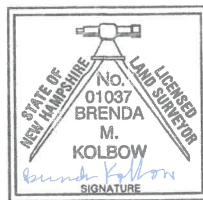
Pictures for ID Only: Not to Scale



See Elevation



Lafayette Road Address:	#39	#55	Lot 2 Proposed	#91	#145	#151	#169
Sidewalk Elevation Relative to 0.0:	-2.61	-1.12	0	-0.16	-0.45	0.39	2.17
Elevation at Bottom of Porch Steps:	-2.83	0.61	3.25	0.04	-0.15	-	5.12
First Floor Elevation above Sidewalk:	0.32	1.46	5.0	3.35	0.06	5.16	8.69
Building Ridge Height above Sidewalk:	33.7	18.7	33.0	25.6	15.4	36.4	37.8



Smithfield Construction
 TFM Project #45407-90
 Date: 2019-11-15



Survey Locations



Elevations, Heights, and Perspectives
39 to 91 Lafayette Road



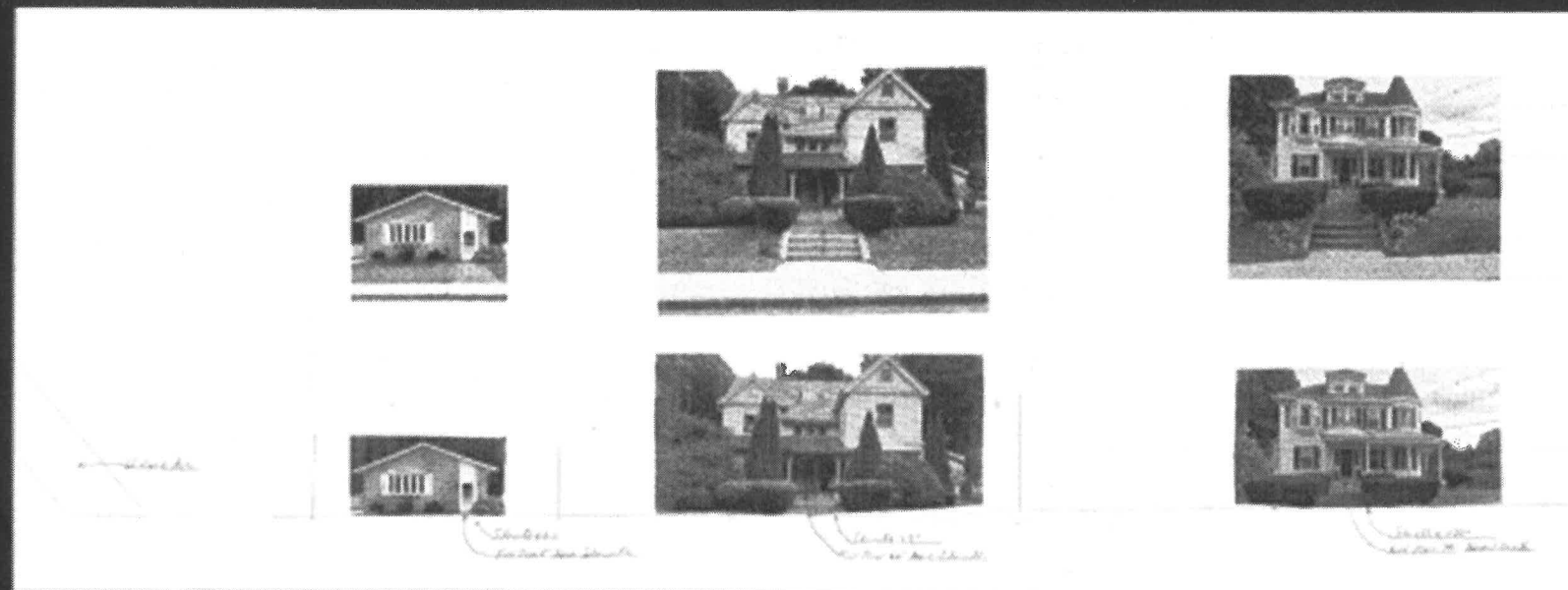
#39
 1st floor @ 35"
 27' Sidewalk to Ridge

#55
 1st Floor @ 31"
 18' sidewalk to Ridge
 56' long

Lot 2
 1st Floor @ 60"
 33' Sidewalk to ridge
 36' long + garage

#91
 1st Floor @ 41"
 24' sidewalk to Ridge
 33' long

Elevations, Heights, and Perspectives
145 to 169 Lafayette Road



Willard Avenue

#145
1st Floor @ 8"
16' sidewalk to ridge

#151
1st Floor @ 66"
42' sidewalk to ridge

#169
1st Floor @ 79"
Similar height to 151



Colonial Style Entrance: Option B



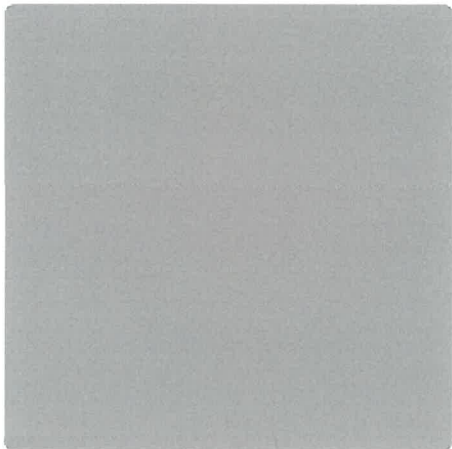
Font Door Fir four panel F-2044



AGED PEWTER

Siding Color: Color "A": Hardie Panel Aged Pewter

Siding Color "B" Ben Moore HC-166 Kendall Charcoal



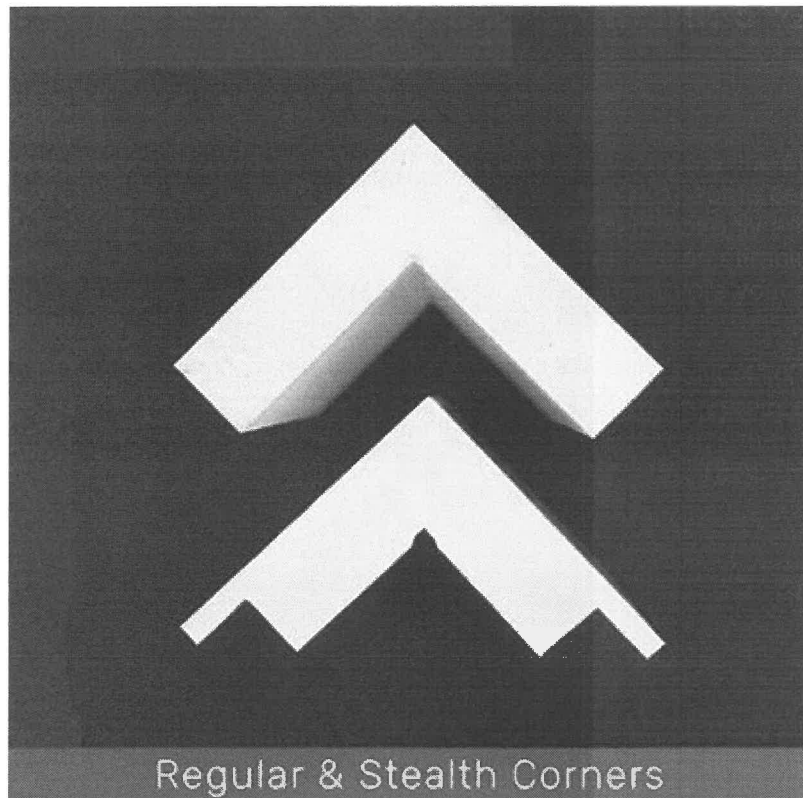
Rabitted Corner Boards

House: 7 1/4", Garage and Dormers: 5 1/2"

VERSATEX Cornerboards

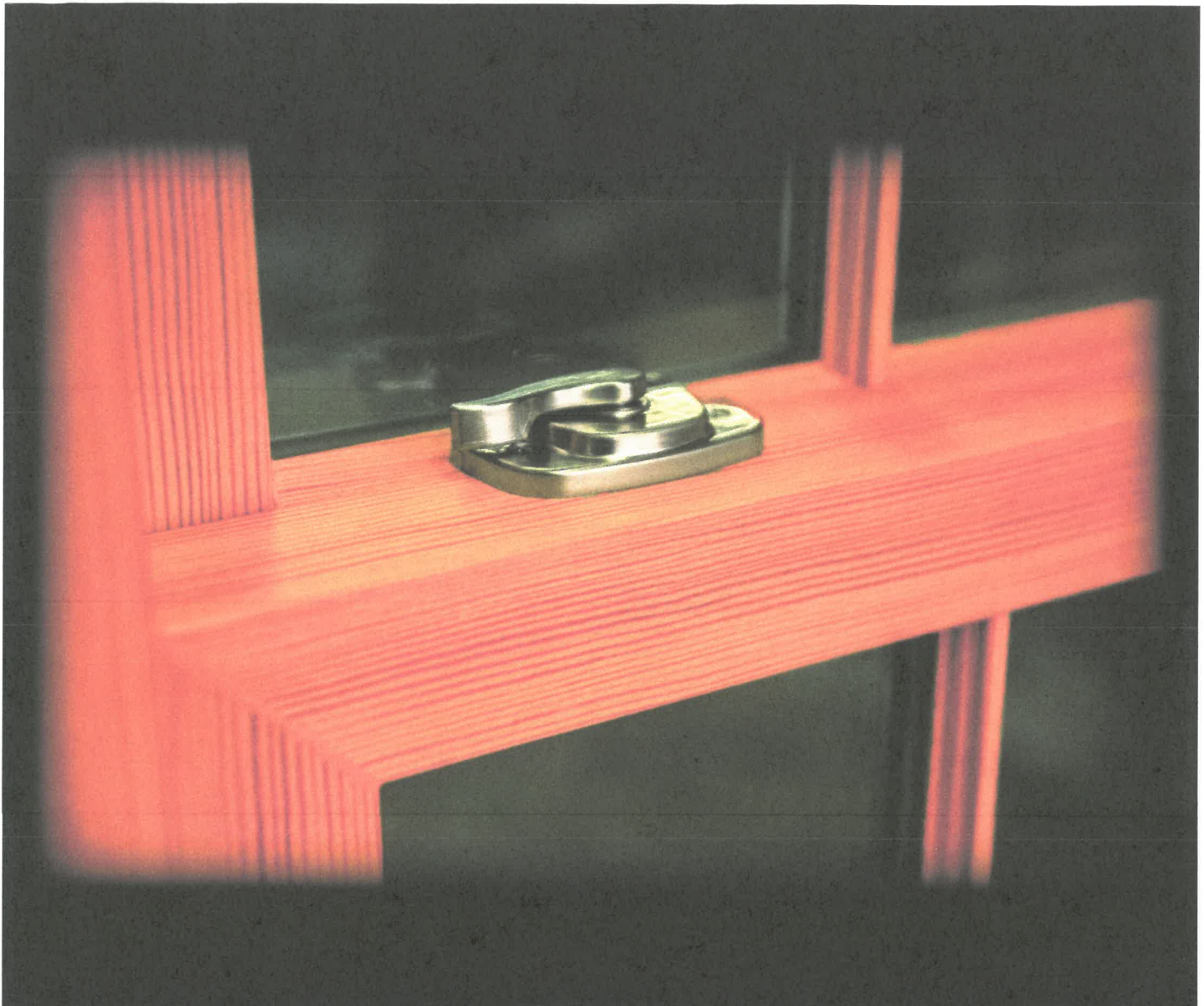
VERSATEX was the first PVC trim company to produce a line of one-piece corners, and we are still the best. Unlike the two-piece cornerboards offered by some competitors, which gather unsightly dirt along the edges, VERSATEX one-piece corners are not only aesthetically superior but easier to install and keep clean. Our cornerboards will look just as attractive ten years from now as they did right after their installation. Plus, our extensive line covers your needs for 12' and 22' lengths up to 10" widths.

When it comes to our Stealth Corners, we give you a full 5/4" (1" actual) board with a true 3/4" X 3/4" pocket to neatly accept fiber cement and other lap siding products. Most competitors work off a scant thickness, meaning shallow pockets and/or thin legs that introduce the risk of breakage. When searching for "rabbeted" cornerboards, make sure it's STEALTH from VERSATEX for a perfect install every time.



5/4 x 6"	1 x 5 1/2"
5/4 x 8"	1 x 7 1/4"





SANFORD
HILLS

 **MATHEWS
BROTHERS**
AMERICA'S OLDEST WINDOW MANUFACTURER



Sanford Hills Mathews, born in Searsmont, moved to Bangor at the age of 19 to learn the trade of joinery. He joined his family in Belfast in 1854 as he continued to learn his trade. Summers he worked, and winters he taught public school. In 1860, he joined his brothers, and the company was renamed "Mathews Brothers Company".

It is said that in his entire career, which spanned 37 years at Mathews Brothers, he never took a vacation, except to attend his son's graduation from the University of Rochester in 1885.

*"His was a life of simplicity, of simple obedience to duty, of earnest toil, and of ready service to those around him."
- Maine Biographies, Harriet B. Coe*

A WINDOW 165 YEARS IN THE MAKING

*For 160 years, **Mathews Brothers** produced putty-glazed wood sash. Millions of them, each and every one hand-glazed. So, the look and feel of wood windows is not only in our heritage, it's in our blood.*

Nearly three decades ago, we added PVC windows to our product line, and were among the first wood window manufacturers in the country to do so. Beautiful windows, highly energy-efficient, low-maintenance, worry-free windows. Wicked Awesome Windows we're proud to make, dealers are proud to distribute, builders are proud to install and homeowners are proud to own.

But, still, we missed the look and feel of our wood windows. We missed the aesthetic of beefy sash rails, the texture of historic muntin bars. We wanted the best of both worlds.

So, we made a bold move. We took our collective decades of experience in the builder's world, learning what they want and need, along with our passion for exceeding customer demands, and coupled it with our generations of experience in producing superior quality windows and doors, both efficiently and accurately, and applied it to the design of this product family.

*The result is our **Sanford Hills** family of products. This breakthrough design is unlike any PVC windows you've ever seen, and the performance is decidedly world-class.*

CLASSIC BEAUTY BREAKTHROUGH DESIGN INCREDIBLE PERFORMANCE

From every angle, the Sanford Hills looks like a classic New England wood window. Starting with a deep 4⁹/₁₆" Master Frame, the window hosts sash that are a full 1³/₄" thick. Traditional 3¹/₂" Flat Casing, 4¹/₂" Banded Casing, Historic Staff Bead Brickmould, as well as Standard or Historic Sill Nosings are available to complete the exterior.

The window's interior is equally impressive. The deep sash rails can accommodate both Low-Profile as well as Hidden Tilt Latches. Choose extruded White, Adobe or Stain-Grade Wood-Based Laminate. Color-matched Jamb Covers and Historic Putty Muntins all hearken back to our Classic wood designs.

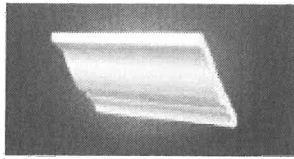
The breakthrough design of the Sanford Hills takes us back to our roots. We emulated the classic 5⁸/₈" muntin bars that we moulded for generations. We copied the historically accurate interior putty beads that we hand-applied for a century and a half. At the same time, we allowed the sash to accommodate both 3⁴/₄" Dual-Glazed, and optional 1¹/₈" Triple-Glazed Insulating Glass Units.

Despite its beauty, the Sanford Hill is incredibly high performing. Performance Grade 50 without any upgrades. Energy Star[®] 6.0 with our standard 3⁴/₄" Low-e/Argon Glazing. Sizes up to 42" x 86" in the Double Hung, and 40" x 84" in the Casement.

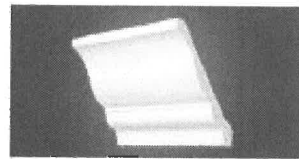
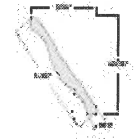
After 165 years, the Sanford Hills has redefined what a window can be.

Table of Contents

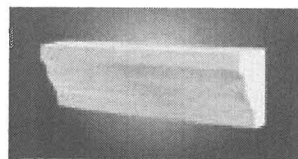
Sanford Hills Mathews	2-3	Understanding Low-e Glazing	14-15
Double Hung		Standard Sizes / Details	
Features	4-5	Double Hung	16-17
Options	6-7	Picture Window/Transom	18-19
Casement/Awning		Casement	20-21
Features	8-9	Awning	22-23
Options	10-11	Casement Picture Unit	24-25
Window Customization	12-13	Window Performance	26
		Useful Links	26
		Hearts and Hands	27



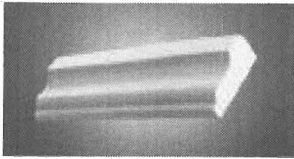
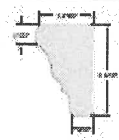
5-1/4" CROWN
#5045K
 Projection: 3-3/4"
 Height: 4-3/16"
 Spring Angle: 37°
 9/16" x 5-1/4" x 16"



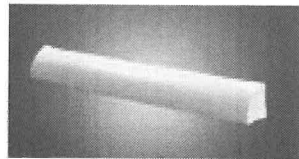
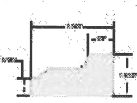
7-1/2" CROWN
#5041K
 Projection: 5"
 Height: 5-1/2"
 Spring Angle: 43°
 1" x 7-1/2" x 16"



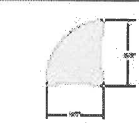
RAM'S CROWN
#5156K
 1-7/16" x 2-1/16" x 16"



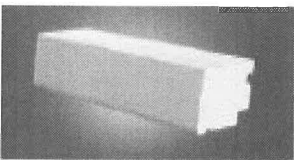
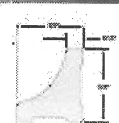
SHINGLE MOULD
#5210K
 1 1/16" x 1-5/8" x 16"



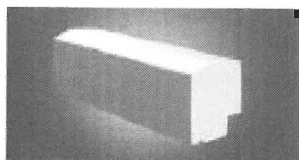
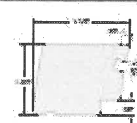
QUARTER ROUND
#5234K
 3/4" x 3/4" x 16"



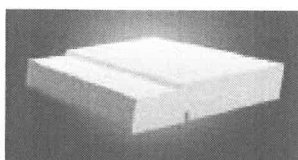
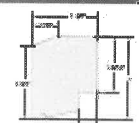
COVE/SCOTIA
#5245K
 3/4" x 3/4" x 16"



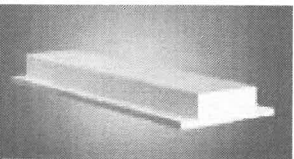
HISTORICAL SILL #1
#7435K
 1-3/4" x 2-5/8" x 16"



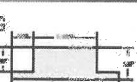
HISTORICAL SILL #2
#7650K
 2" x 1-3/4" x 16"



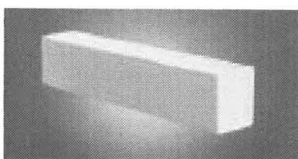
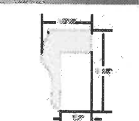
REPLACEMENT SILL
#910810SILL
 1-1/4" x 7-1/4" x 10"



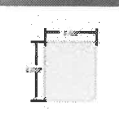
KLEERlok MOULDING
#5800K
 5/8" x 2-1/2" x 16"



WAINSCOT CAP
#5276K
 1-1/8" x 1 3/16" x 16"



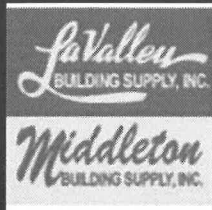
BALUSTER PROFILE
#5150K
 1-1/2" x 1-1/2" x 12"





**MASTerview
WINDOWS**

BY KAS KEL



3200 PATIO DOOR

HIGH PERFORMANCE, LOW MAINTENANCE.

A Natural Fit.



The MasterView 3200 is one of the best built, best performing patio doors available at any price. It's reinforced at key points with heavy-duty aluminum, for a lifetime of trouble-free operation.

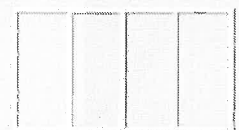
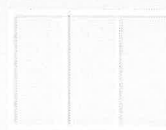
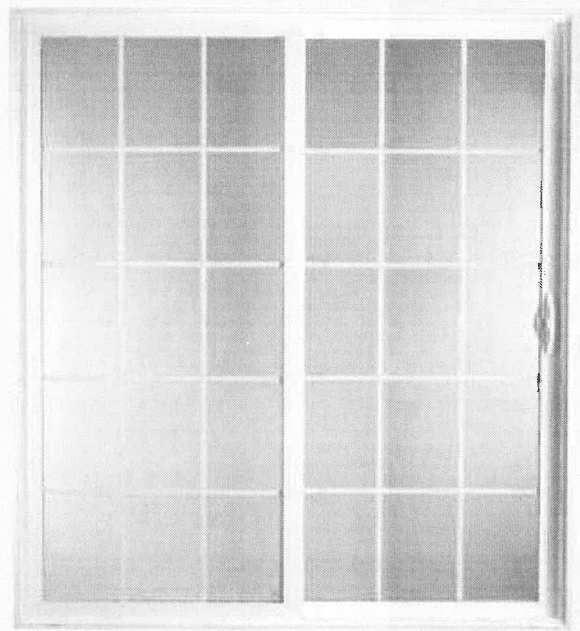
Standard Features

- Sill engineered for excellent drainage
- Integral nail fin and screen track
- Aluminum screen frame with fiberglass mesh screening
- One rolling and one stationary panel
- Interlocking meeting rail
- Adjustable steel rollers
- Dual point locking hardware

Performance Options

- Energy Star Rated glazing package
- 5, 6, 8 foot 2-lite styles
- 9, 12 foot 3-lite styles
- 12 foot 4-lite styles
- Field-applied, pre-cut J-channel
- Field-applied, pre-cut extension jamb
- 4 9/16" or 6 7/16" pre-primed or clear extension jamb
- Profile Grid Package
- Multiple Colors Available

3200 Patio Door





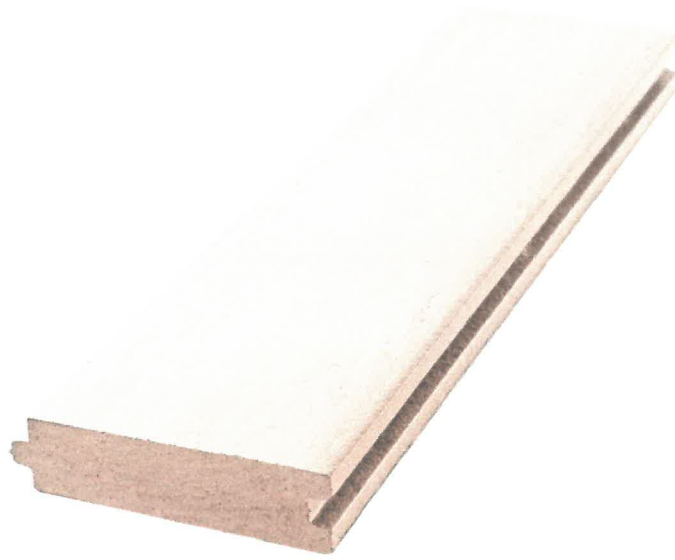
Amar Carriage Court Garage Door



4' Fence Cedar Picket Option



York YCD AC Condenser



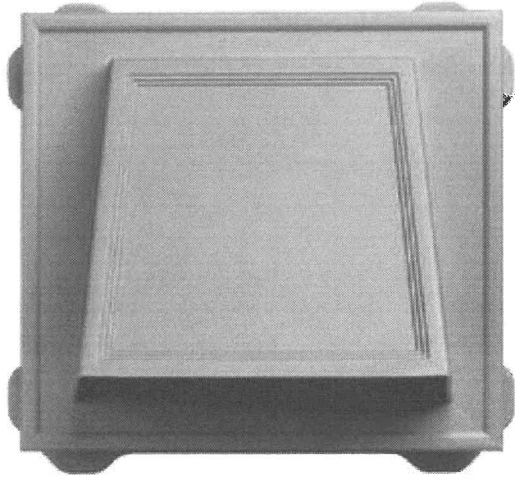
Front Porch Flooring

Aeratis Porch Flooring- Paintable



Rear Deck and Steps

Trex Select Pebble Grey



Vent Hoods

Mid- America Vents- 4" for bath fans and fryer, 6" for range hood.

Paintable to match siding color

© 2011 Mid-America Vents, Inc.



The Durable
Value

SELECT SERIES



Front Walk

Technobloc Blue 80 Slate- Color Shale Grey

6.5 x 13 in Running Bond Pattern



Planter Wall Stone: Cambridge Matrix 6" Split Faced Onyx/Natural



Light Fixture A Globe Electric 44206 with Edison LED bulb

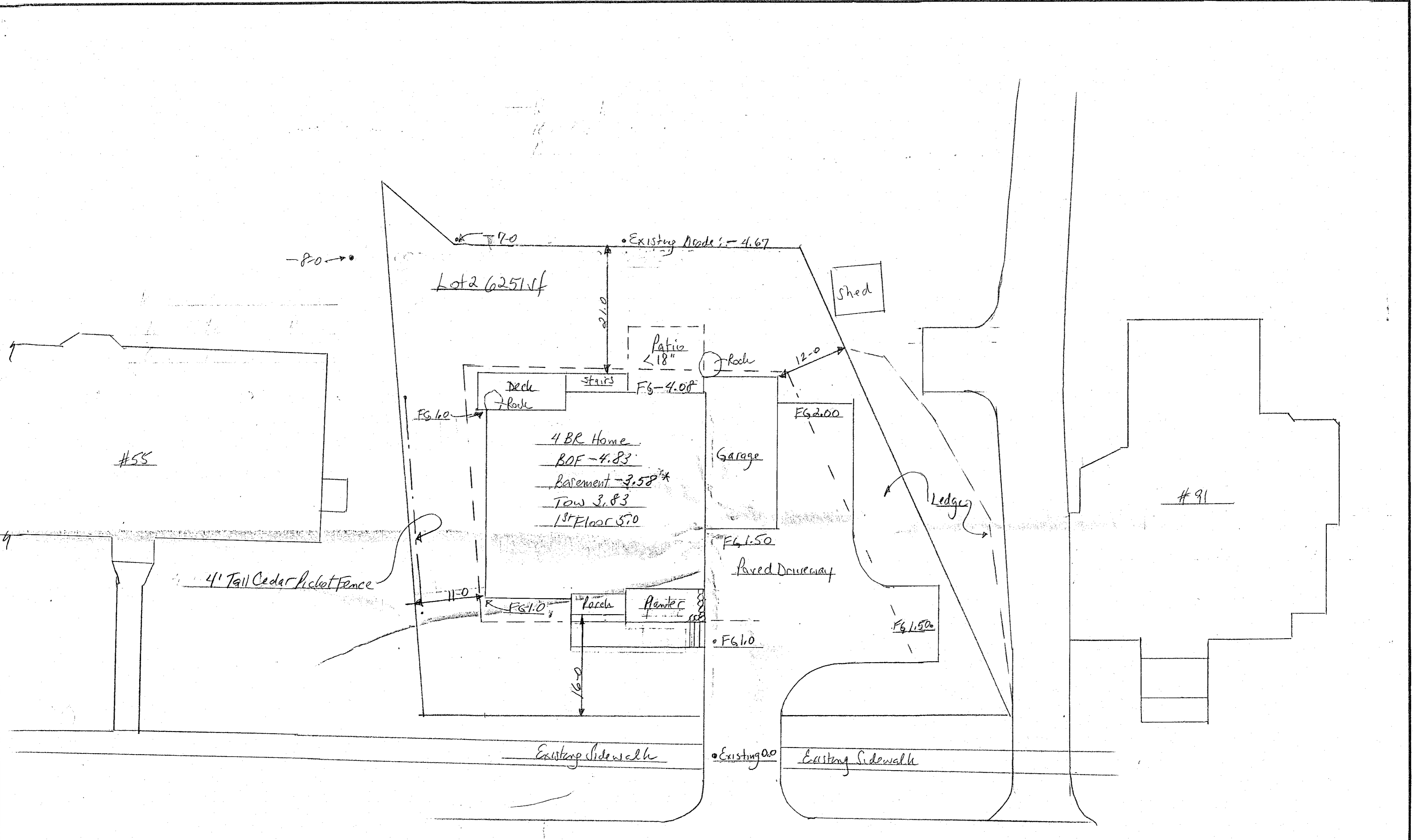


Fixture B, to be in black

Handleset for Front Door

Schlage F59 Addison, in aged bronze





* Foundation Wall Height: 7'-8"
 (7'-10" Wall on 8" Footer with stone placed 2" above footer to allow for 2" Styrofoam)

Lafayette Road

RECEIVED
 NOV 15 2019
 BY: _____

Lot 2 55 Lafayette Road		
SCALE: 1/2" = 10'	APPROVED BY:	DRAWN BY:
DATE: 10/7/19		REVISED:
Smithfield Construction		DRAWING NUMBER
Site Plan		1



Lot 2 55 Lafayette Rd		
SCALE: 1/4"	APPROVED BY:	DRAWN BY
DATE: 11/11/19		REVISED
Smithfield Construction		DRAWING NUMBER
Front Elevation		2

Roof Peak →

28.0

First Floor →

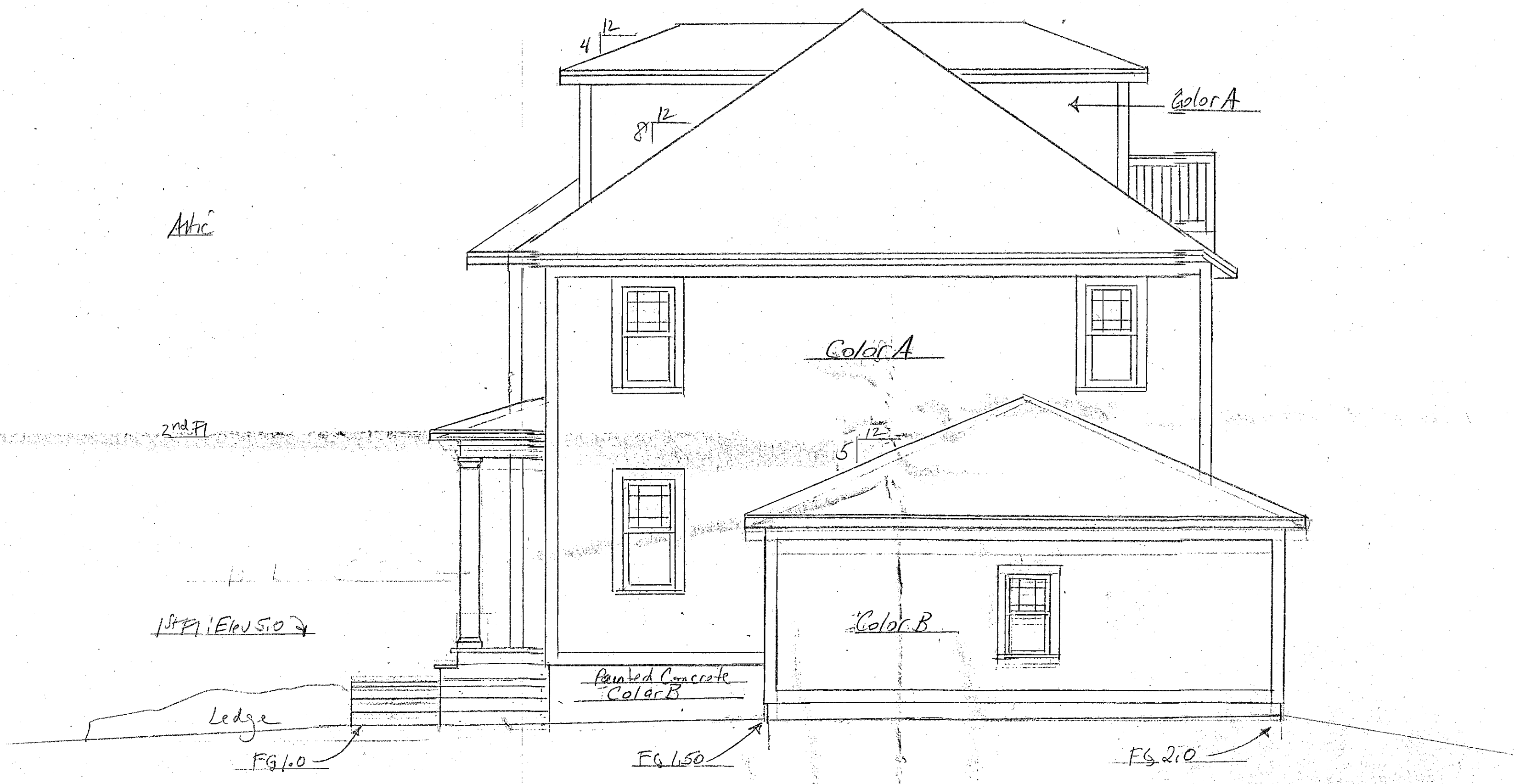
5.0

Sidewalk →

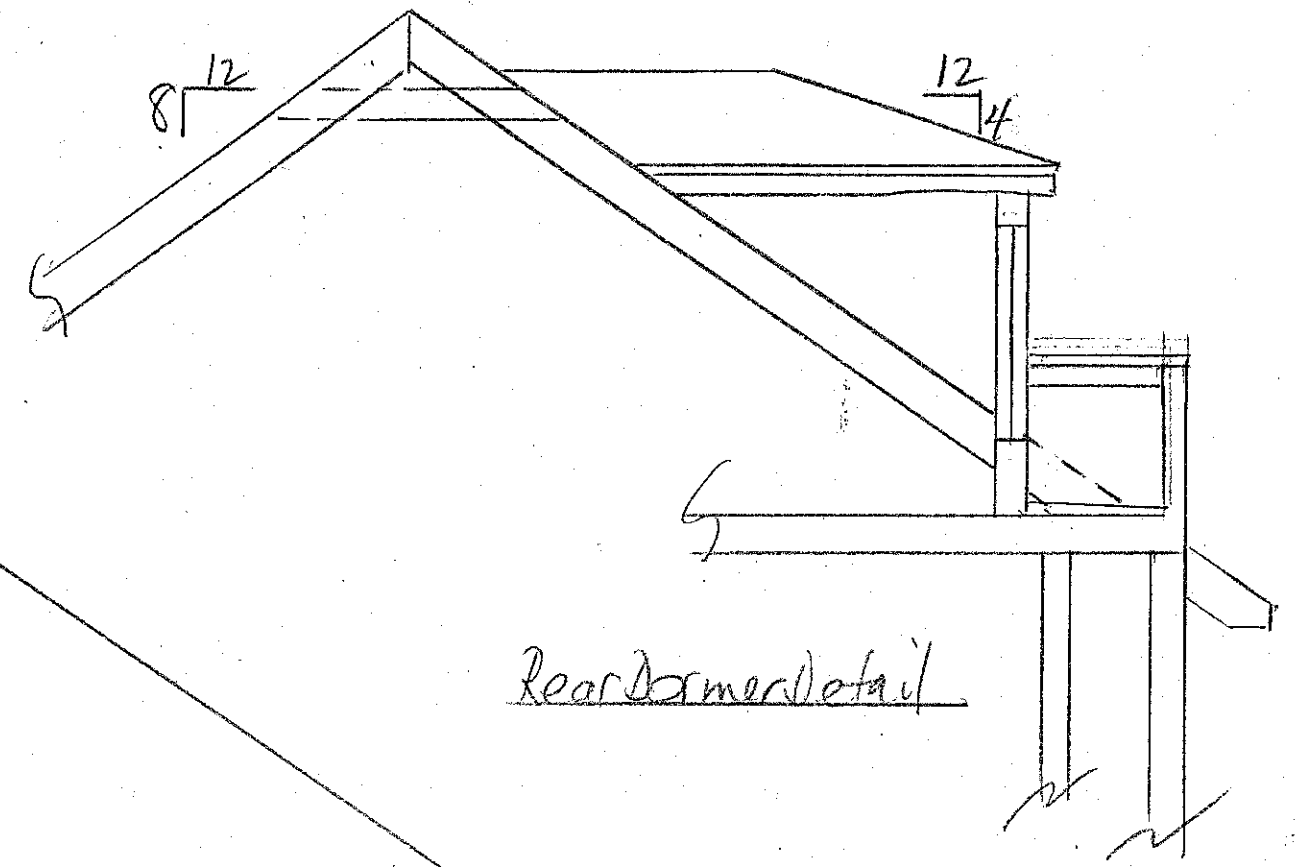
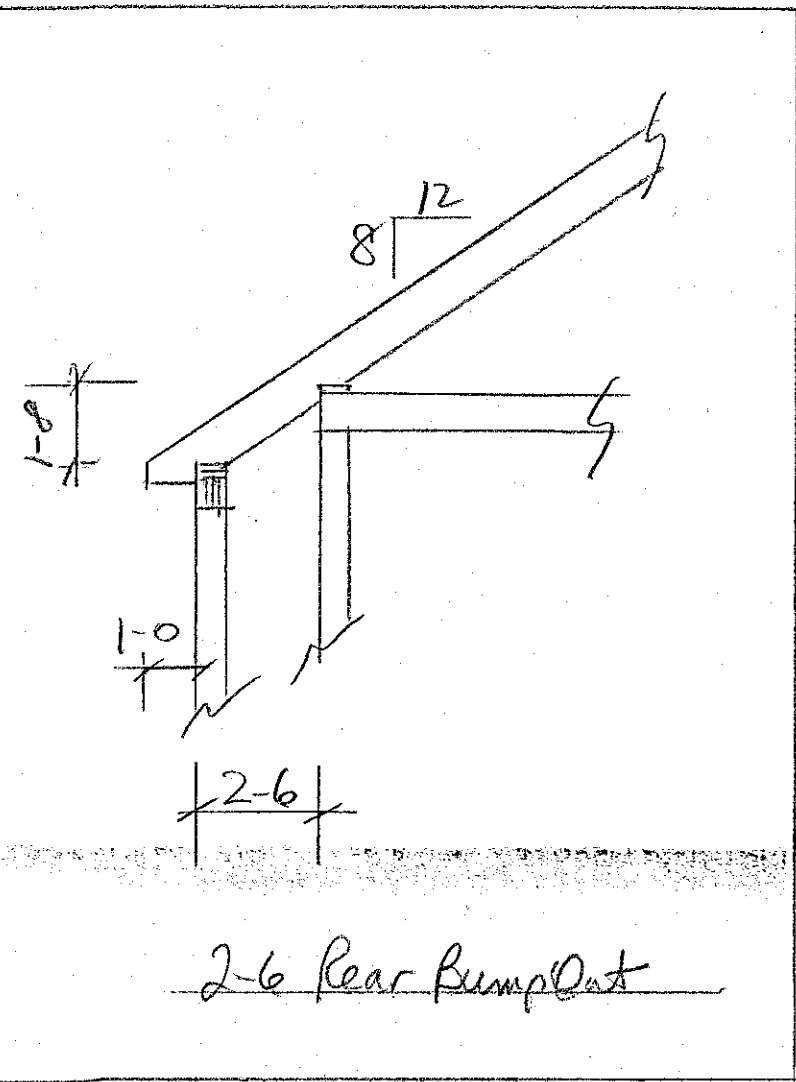


RECEIVED
 NOV 22 2019
 By _____

Lot 2 55 Lafayette Rd		
SCALE: 1/4"	APPROVED BY:	DRAWN BY
DATE: 11/21/19		REVISED
Smithfield Construction		DRAWING NUMBER
Front Elevation		2-B



Lot 2 55 Lafayette Rd		
SCALE: 1/4"	APPROVED BY:	DRAWN BY:
DATE: 11/11/19		REVISED:
Smithfield Construction		DRAWING NUMBER
Right Side Elevation		3



2-6 Rear Pump Out

FG 2.00

Painted Concrete
Color B

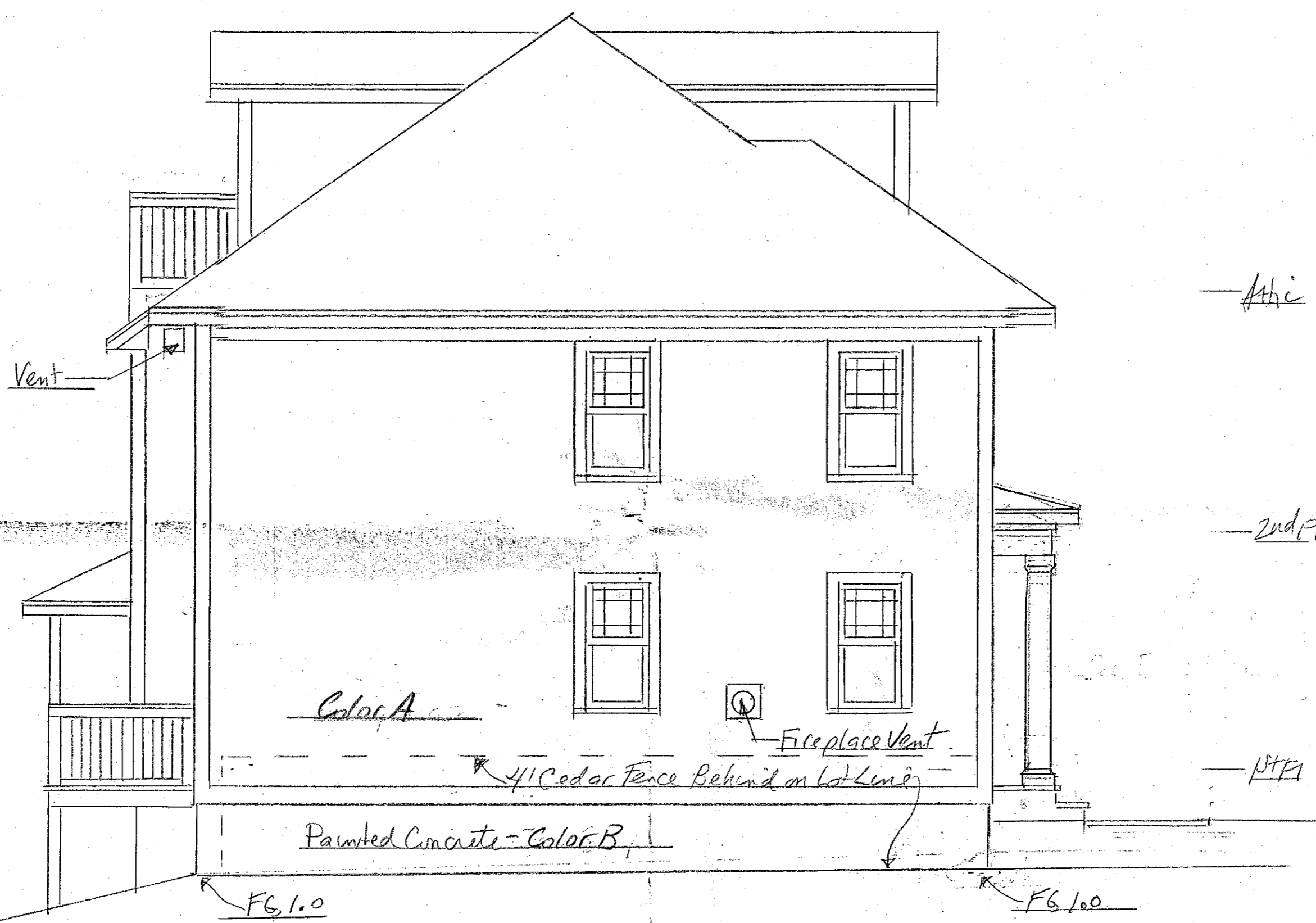
Framed Wall w/ Color B Siding

FG 1-4.08

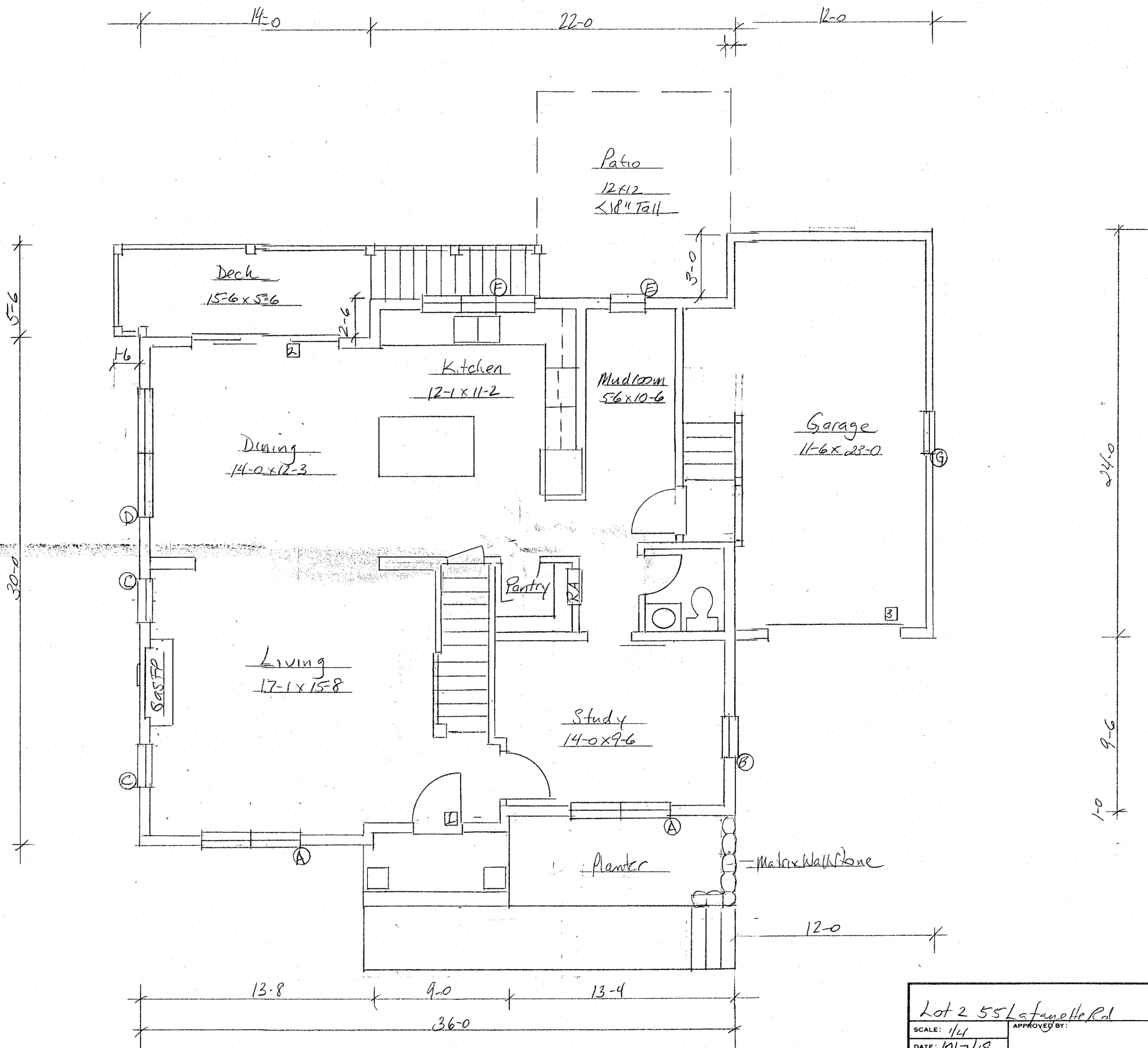
FFG 1.0 at corner

Color B Siding + Painted Concrete

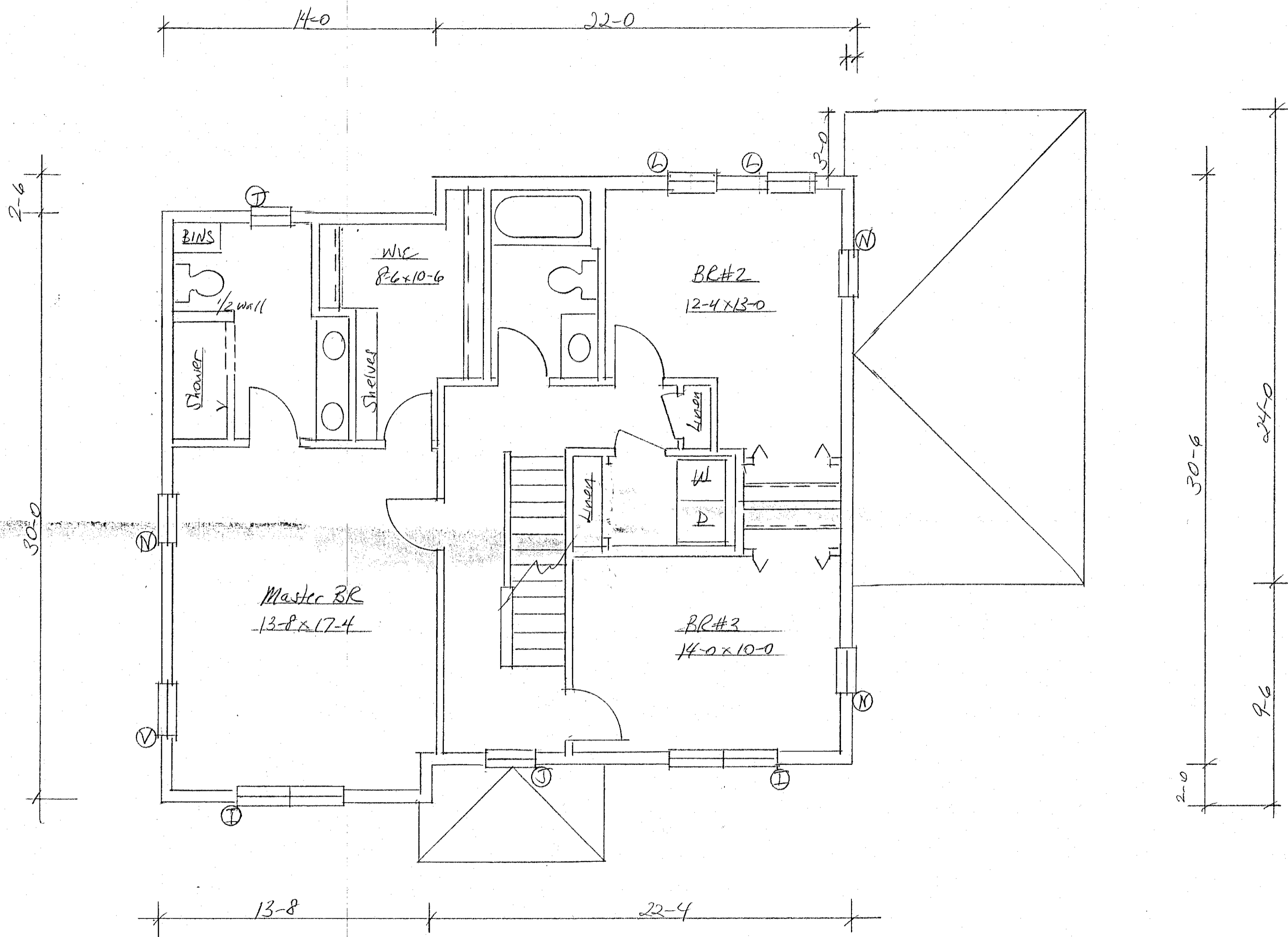
Lot 2 55 Lafayette Rd			
SCALE: 1/4"	APPROVED BY:	DRAWN BY:	
DATE: 11/11/19		REVISED:	
Smithfield Construction			DRAWING NUMBER
Rear Elevation			4



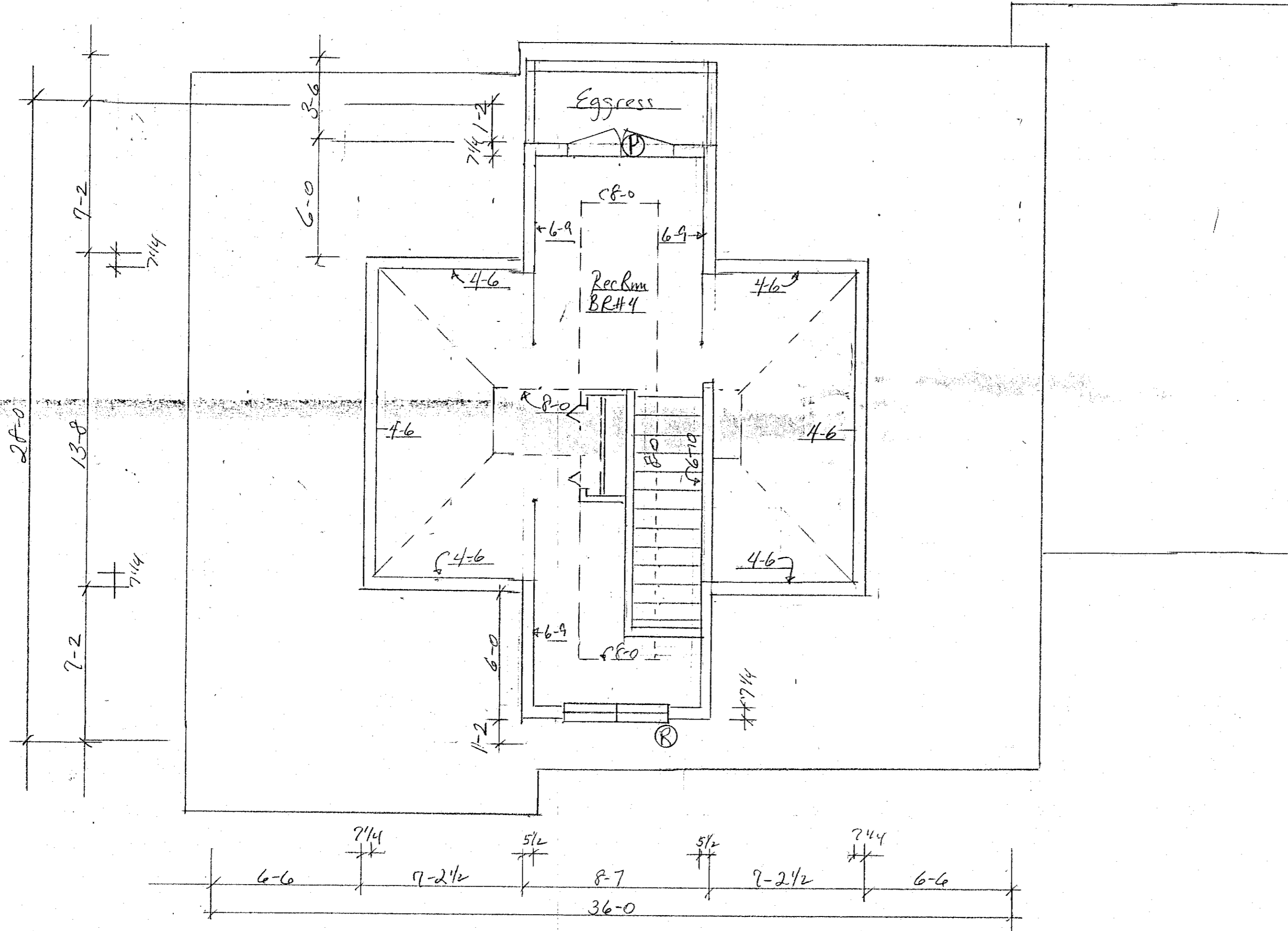
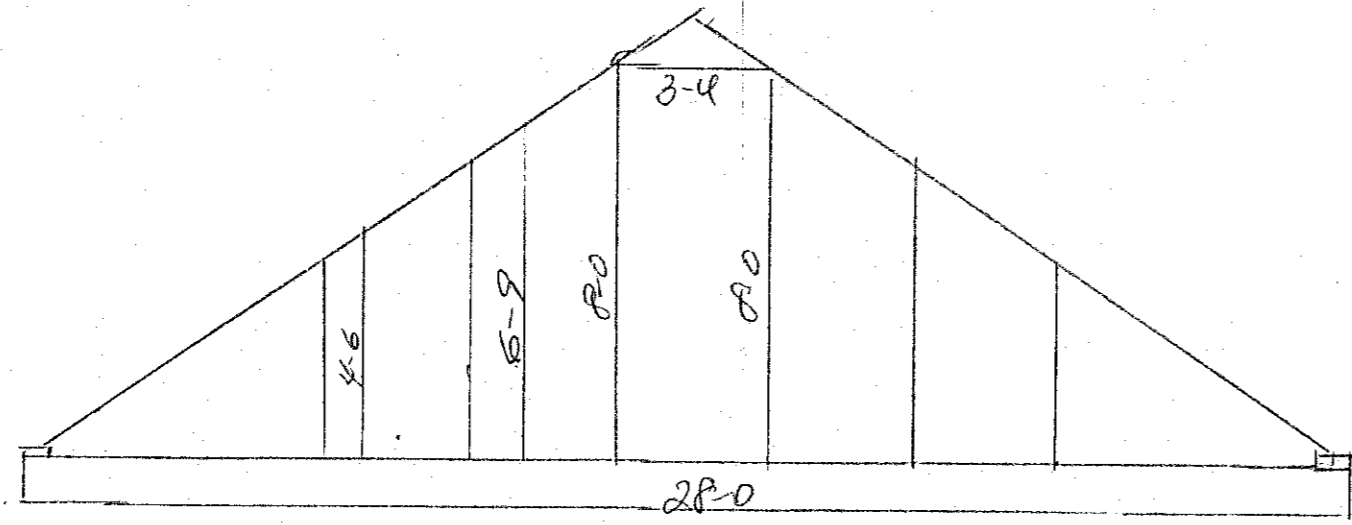
Lot 2 55 Lafayette Rd		
SCALE: 1/4"	APPROVED BY:	DRAWN BY
DATE: 4/10/19		REVISED
Smithfield Construction		DRAWING NUMBER
Left Elevation		5



Lot 2 55 Lafayette Rd		
SCALE: 1/4"	APPROVED BY:	DRAWN BY:
DATE: 10/7/19		REVISED:
Smithfield Construction		DRAWING NUMBER
First Floor Plan		6

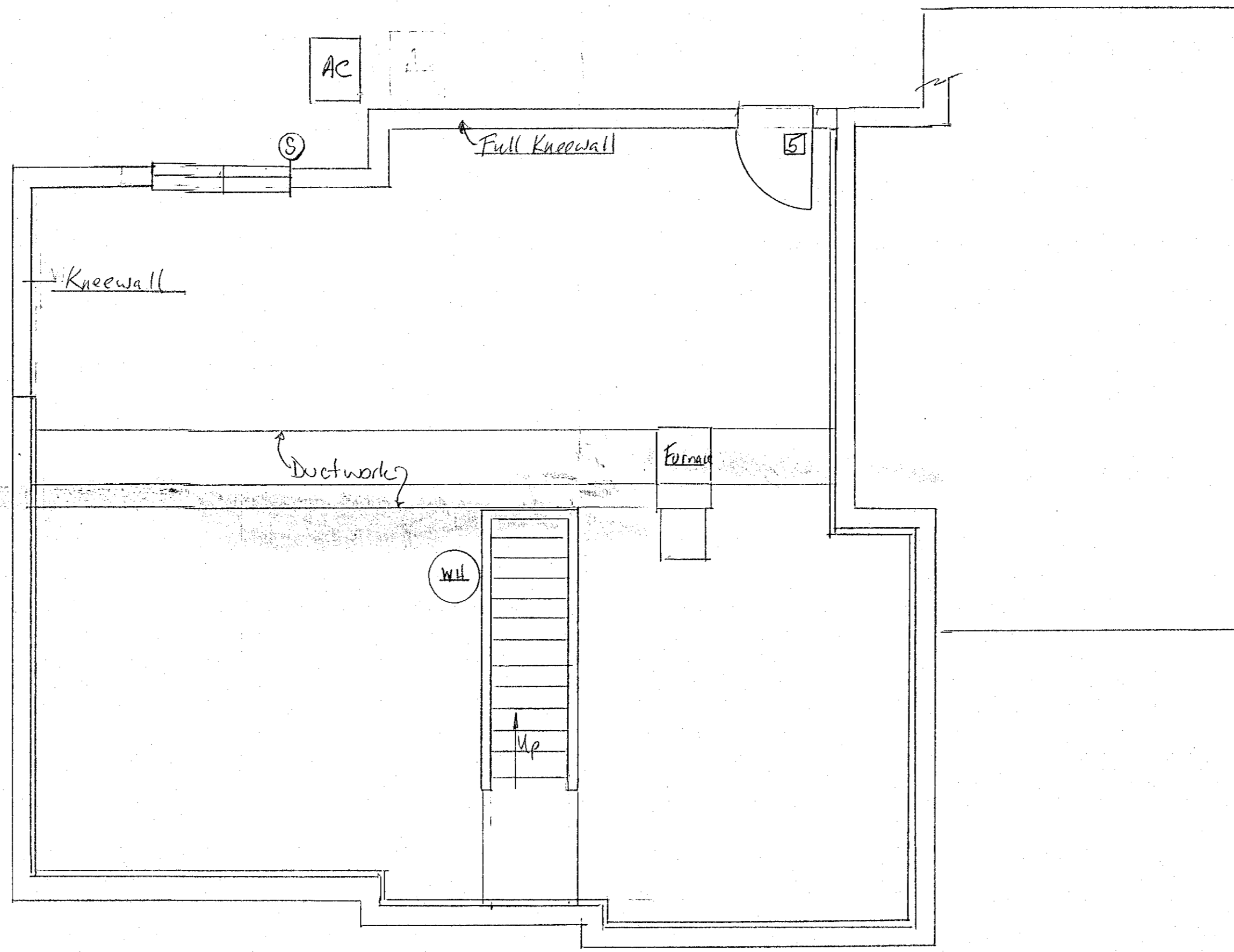


Lot 2 55 Lafayette Rd		
SCALE: 1/4"	APPROVED BY:	DRAWN BY:
DATE: 10/7/19		REVISED:
Smithfield Construction		DRAWING NUMBER
Second Floor Plan		?



Heated Area 4771 sq ft

55 Lafayette Rd Lot 2		DRAWN BY
SCALE: 1/4"	APPROVED BY:	REVISED
DATE: 10/2/19		
Smithfield Construction		DRAWING NUMBER
Attic Floor Plan		81



55 Lafayette Rd Lot 2		
SCALE: 1/4"	APPROVED BY:	DRAWN BY:
DATE: 10/7/19		REVISED:
Smithfield Construction		DRAWING NUMBER
Basement Floor Plan		9

Lot 2 55 Lafayette Road, Lot 2										
Date 11-11-19										
Code	RO	Quantity	Type	Frame	Series	Glass	Grille	Casing	Hist Sill	Stud Pocket
A		2	Oriel DH Twin	68 x 70		Low E	Prairie SDL over none Match top sash size to I	Field 1 x 5 Azek	Kleer 7435	Yes
B		1	Egress Casement	28 x 57			Prairie SDL over none, mullion bar	Field 1x5 Azek	Kleer 7435	
C		2	DH	28 x 54			Prairie SDL over none	"	"	
E		1	DH	26 x 42			Prairie SDL over none	"	"	
F		1	Triple Awning	83.5 x 41		Low E	Prairie SDL	Field 1 x 5 Azek	Kleer 7435	Yes
G		1	DH	26 x 45		Plain Insul	Prairie SDL over none	Field 1 x 5 Azek	Kleer 7435	
I		2	DH Twin	58 x 59		Low E	Prairie SDL over none	Field 1 x 5 Azek	Kleer 7435	Yes
J		1	DH	34 x 55		Low E	Prairie SDL over none	Field 1 x 5 Azek	Kleer 7435	
L		2	DH	30 x 46		Low E	Prairie SDL over none	Field 1 x 5 Azek	Kleer 7435	
N		3	Egress Casement	28 x 54		Low E	Prairie SDL over none, faux mullion	Field 1 x 5 Azek	Kleer 7435	
p		1	Twin Egress Casement	62x 46		Low E	Prairie SDL over none, faux mullion	Field 1 x 4 Azek	Kleer 7435	Yes
R		1	Twin DH	62 x 46		Low E	Prairie SDL over none	Field 1x4 Azek	Kleer 7435	Yes
S		1	Twin DH	72 x 54		Low E	Prairie SDL over none	Field 1x4 Azek	kleer 7435	Yes
T		1	DH	26 x 2 Tempered		Low E	Prairie SDL over none	"	"	
V		1	DH	28 x 54		"	Prairie SDL over none	"	"	
		3	Sliding Patio Door	108 x 80		Low E	None	Field 1 x 4 Azek		

Lot 2 55 Lafayette Rd		
SCALE: N/A	APPROVED BY:	DRAWN BY:
DATE: 11/11/19		REVISED:
Smithfield Construction		DRAWING NUMBER
Window Schedule		10