

Requirements for Granting a Variance

- 1) **The variance is not contrary to public interest:** No, the variance requested will not affect the public interest. This is for 2 small AC condensers on the south side of 356-358 Islington St (a 4-unit) and with only 38" from the neighbors property line and 24' back from the public sidewalk. Highly unlikely this location, on private property, would have any negative impact on the public and any public health or safety issues. Very limited noise from these units and they are only run during hot summer days.
- 2) **Noted above...**
- 3) **Substantial justice is done:** It is felt the benefit to the applicant is not out weighted by the harm to the general public or others. The only impact is to my neighbors (Pete and Morgan Caraviello) and I have attached a letter of approval from them.
- 4) **The values of the surrounding properties would not be diminished:** No. It's the applicants opinion values would NOT be diminished. These condensers are very small and have very little noise.
- 5) **Literal enforcement of the ordinance would result in unnecessary hardship:** This narrow path between the two properties is already being used by other mechanicals and utilities. There are 5 electrical meters, 5 gas meters and several cable boxes and lines. This is a natural place to put all mechanicals, so that other site areas on the property could still be used for bike storage, gardens and/or parking. Adding a second "mechanical area" to the outside would only take away use by its occupants and/or owner.

Thank you!

Dan Hale

Owner 356-358 Islington St

RECEIVED

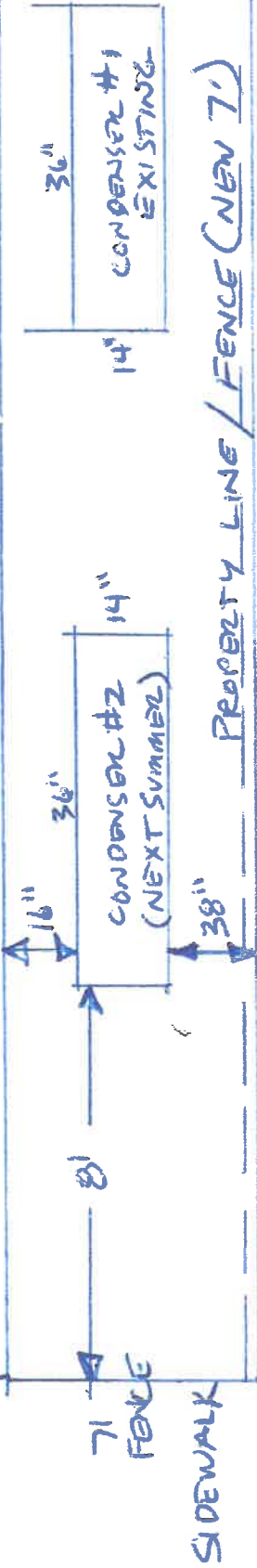
SEP - 5 2019

BY: _____

DAN HALE
356-358 ISLINGTON ST
PORTSMOUTH

SITE PLAN (LOOKING DOWN)
AC CONDENSER UNITS (COOLING-ONLY)

356-358 ISLINGTON



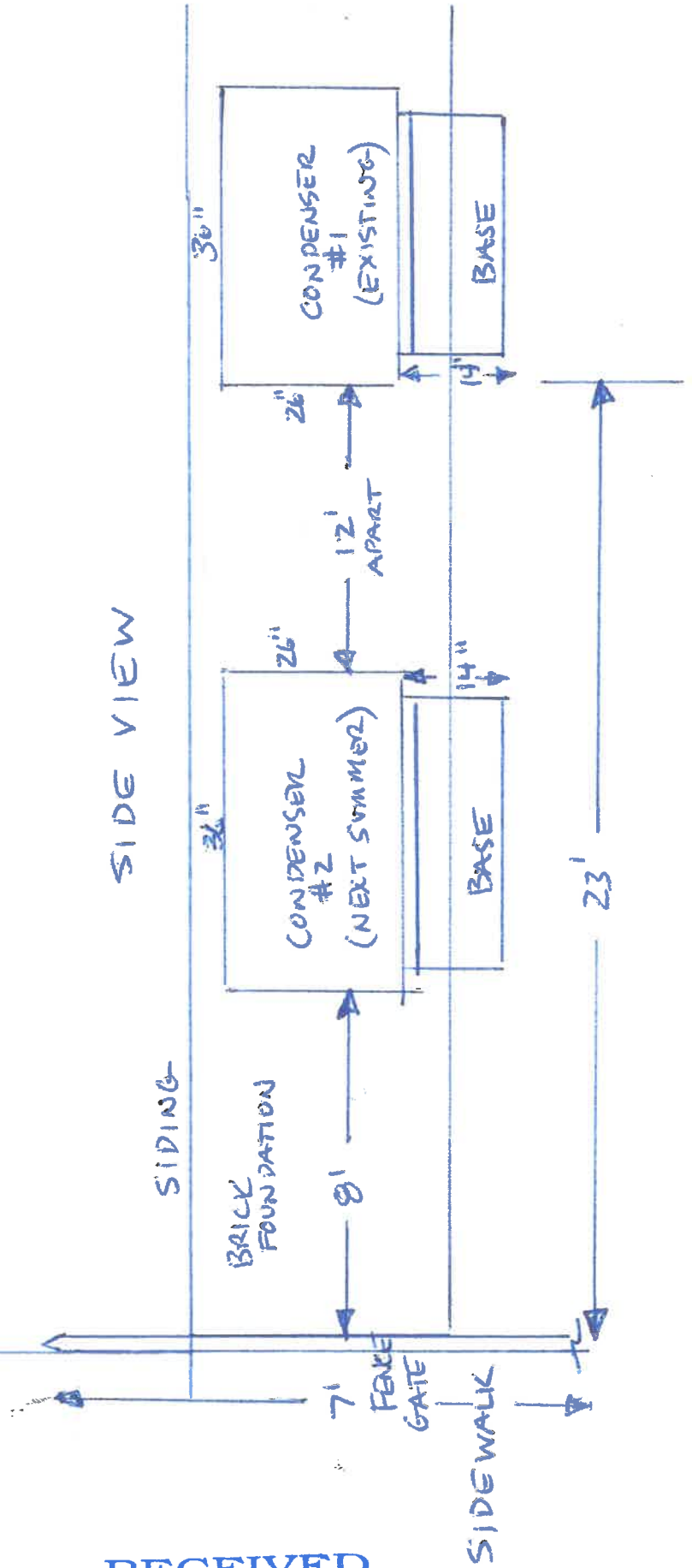
366 ISLINGTON ST.
PETE E MORRAN CARAVIELLO

RECEIVED

SEP - 5 2019

BY: _____

SIDE VIEW



Pete and Morgan Caraviello
366 Islington St.
Portsmouth, NH 03801

8/29/2019

To Whom it May Concern:

As property owners at 366 Islington St., we are completely unopposed to the location and use of the Air Conditioning Condenser unit placed by Dan Hale of 356 Islington St. in the space between our abutting properties.

We encourage anyone to reach out to us directly if any further questions or concerns arise.

Regards,



8/29/19

Pete and Morgan Caraviello
Cell: 617.599.0897

RECEIVED

SEP - 5 2019

BY: _____



CONDENSER #1
PARTIALLY INSTALLED
WAITING APPROVALS

RECEIVED

SEP - 5 2019

BY: _____



356-358 ISLINGTON
NEW 7' FENCE/GATE TO BE INSTALLED
(VIEW FROM PUBLIC SIDEWALK)

RECEIVED

SEP - 5 2019

BY: _____



SOUTHSIDE OF
356-358 ISLINGTON
ALL UTILITIES
ARE LOCATED HERE

RECEIVED

SEP - 5 2019

BY: _____

CONDENSER SPECS

LG's devotion to providing efficient ductless solutions can be seen across the Multi F line of outdoor condensers. The LMU18CHV is a dual zone mini split outdoor condenser capable of supplying ductless heating and cooling to two rooms in your home. With inverter technology and nearly two dozen compatible indoor units in a variety of styles, the LMU18CHV is a great choice for nearly any applications.

Inverter Technology

- LG's outdoor condensers are designed with efficient inverter technology. An electronic expansion valve and a variable speed compressor carefully regulate the refrigerant flow, reducing energy consumption and allowing for consistent, accurate temperatures.

Gold Fin Protection

- To ensure the reliability and longevity of the LMU18CHV's heat exchanger, LG employs a Gold Fin coating that prevents corrosion and improves durability.

Low Ambient Operations

- This outdoor unit supports cooling operations down to 14 degrees Fahrenheit and heating operations down to -4 degrees Fahrenheit. There is also a defrost feature, which removes frost from the condenser coil in frigid conditions.

Quiet Design

- Thanks to a brushless direct current motor and a twin rotary compressor, the LMU18CHV is significantly quieter than traditional air conditioning systems. These components reduce mechanical sound, electrical sound, and vibrations within the unit.

Product Compatible With

- LG LMN077HVT Wall Mounted Mini Split Indoor Unit
- LG LSN090HSV4 Wall Mounted Mini Split Indoor Unit
- LG LSN120HSV4 Wall Mounted Mini Split Indoor Unit
- LG LMN158HVT Wall Mounted Mini Split Indoor Unit
- LG LMAN097HVP Wall Mounted Designer Mini Split Indoor Unit
- LG LMAN127HVP Wall Mounted Designer Mini Split Indoor Unit
- LG LAN090HSV4 Wall Mounted Designer Mini Split Indoor Unit
- LG LAN120HSV4 Wall Mounted Designer Mini Split Indoor Unit
- LG LMCN077HV Ceiling Cassette Mini Split Indoor Unit
- LG LMCN097HV Ceiling Cassette Mini Split Indoor Unit
- LG LMCN125HV Ceiling Cassette Mini Split Indoor Unit
- LG LMDN096HV Concealed Duct Mini Split Indoor Unit
- LG LMDN126HV Concealed Duct Mini Split Indoor Unit

Product Note

This product requires two compatible LG mini split indoor units and the following accessories for installation:

- **Line Set** - This double insulated tubing transfers refrigerant

General Information

Type	Outdoor Condenser
Product Line	Multi F
Operating Mode	Heating and Cooling
Maximum Number of Zones	2
Multi-Zone Compatible	Yes
Refrigerant Type	R-410A
Installation Location	Outdoor
UPC	048231374545

Performance

Cooling BTU	18000
Maximum Sound Level	52 dB
Minimum Outdoor Temperature for Heating	-4 F
Low Ambient Heating	Yes
Minimum Outdoor Temperature for Cooling	14 F

RECEIVED

SEP - 5 2019

BY:

Electrical Data

Voltage	208/230 Volts
Phase	1
Frequency	60 Hz
Recommended Breaker Size	20 Amps

Dimensions

Maximum Line Length	164 Feet
Line Set A Liquid Connection	1/4 Inch
Line Set A Gas Connection	3/8 Inch
Line Set B Liquid Connection	1/4 Inch
Line Set B Gas Connection	3/8 Inch
Product Height	25 19/24 Inches
Product Width	34 1/4 Inches
Product Depth	12 29/48 Inches
Product Weight	100 Pounds