

34 Highland St



Image capture: Sep 2017 © 2020 Google

Portsmouth, New Hampshire



Street View



Andersen Wood SPEC SHEET

Branch Name: New England North

Ship To Location:

SC: Richard O

Job #: 1-RF700HI

Customer Name: JASON LANDER

Measure Tech:

Prepared By:

Date: 02/21/2020

INSTALLER:

ISM:

Pag

NEW WINDOW UNIT																																
ITEM #	Existing Window Type		Andersen Window TYPE	Color/Finish			SC SIZE SOLD (Tip to TIP)			MEASURE TECH SIZE			FULL FRAME ONLY	DH INSERT ONLY	Frame Sash Options	Casement Handling Options				Glass OPTION	Screen (Standard is included in Base price)	Grille Options (PER SASH PRICING)										
	Room	Floor		Location	Existing Window Code	Series Type CODE	Window Style CODE	Exterior Color CODE	Interior Finish Color CODE	TW Jamb Liner Color	SC Standard Size AW Code	Width				Height	TOTAL UI (WIDTH + HEIGHT)	Width	Height			MT/ISM Standard Size CODE	WALL DEPTH	SILL ANGLE	Sash Split	Venting / Handing	Hinge Style	Temp CODE	Screen Options	Grid Type CODE	Exterior Grid Color	Interior Grid Color
1	LIV	1st	DH-HITILT	100	SH	BL	WH			36	65	101									STD	PT-W	GBG	BL	WH	COLO NIAL	1, 1		ALL			
2	BED 1	2nd	DH-HITILT	100	SH	BL	WH			36	65	101									STD	PT-W	GBG	BL	WH	COLO NIAL	1, 1		ALL			
3	BED 1	2nd	DH-HITILT	100	SH	BL	WH			36	65	101									STD	PT-W	GBG	BL	WH	COLO NIAL	1, 1		ALL			
4	BED 1	2nd	DH-HITILT	100	SH	BL	WH			36	65	101									STD	PT-W	GBG	BL	WH	COLO NIAL	1, 1		ALL			

BAY / BOW WINDOW										SC/Installer Notes: (Include Misc. Labor, Mull Stack Options, special conditions, Use Item # to Identify)																	
Projection Angle: (Bay: 30° or 45°)										Top of Window to Soffit (inches)																	
Bay Window Flankers (DH / Casement)										Width of Overhang (inches)																	
Construct Roof 1 (Yes / No)										If tied to Soffit, color of Soffit material																	

†There is no guarantee that new shingles will match existing color.

NEW DOOR UNIT																																				
ITEM #	Existing Door Type		Andersen Door TYPE	Color/Finish			SC SIZE SOLD (Tip to TIP)			MEASURE TECH SIZE			FULL FRAME ONLY	Grille Options (PER SASH PRICING)								Glass OPTION	Screen Option	Hinge Option	Hinged and Gliding Door Options								MULL / STAC OPTIONS			
	Room	Floor		Location	Existing Door Code	Series Type CODE	Window Style CODE	Exterior Color CODE	Interior Finish Color CODE	Standard Size AW Code	Width	Height		TOTAL UI (WIDTH + HEIGHT)	Width	Height	RO / TIP	Ext Jamb Size	Inswing Extension Location	Grid Type CODE	PD Exterior Grid Color				PD Interior Grid Color	Pattern CODE	#Bars Vert (Per Sash)	#Bars Horiz (Per Sash)	Obscure CODE	Screen CODE	IN or OUT	# Panels	Gliding Door Venting / Handing	Hinged Door Venting / Handing	PD Assembly (200, 400, & A-Ser gliding only)	Lock HRDWR Type

Approval _____ Print Name JASON LANDER Title Home Owner

Andersen Wood SPEC SHEET

Branch Name: New England North

Ship To Location:

SC: Richard O

Job #: 1-RF700HI

Customer Name: JASON LANDER

Measure Tech:

Prepared By:

Date: 02/21/2020

INSTALLER:

ISM:

Pag

NEW WINDOW UNIT

ITEM #	Existing Window Type		Andersen Window TYPE	Color/Finish			SC SIZE SOLD (Tip to TIP)			MEASURE TECH SIZE			FULL FRAME ONLY	DH INSERT ONLY	Frame Sash Options	Casement Handling Options				Glass OPTION	Screen (Standard is included in Base price)	Grille Options (PER SASH PRICING)									
	Room	Floor		Series Type CODE	Window Style CODE	Exterior Color CODE	Interior Finish Color CODE	TW Jamb Liner Color	Standard Size AW Code	Width	Height	TOTAL UI (WIDTH + HEIGHT)				Width	Height	MT/SM Standard Size CODE	WALL DEPTH			SILL ANGLE	Sash Split	Venting / Handing	Hinge Style	Temp CODE	Screen Options	Grid Type CODE	Exterior Grid Color	Interior Grid Color	Pattern CODE
5	BED 1	2nd	DH-HITILT	100	SH	BL	WH				36	65	101							STD	PT-W	GBG	BL	WH	COLO NIAL	1, 1		ALL			
6	BED 1	2nd	DH-HITILT	100	SH	BL	WH				32	40	72							STD	PT-W	GBG	BL	WH	COLO NIAL	1, 1		ALL			
7	BED 1	3rd	DH-HITILT	100	SH	BL	WH				28	45	73							STD	PT-W	GBG	BL	WH	COLO NIAL	1, 1		ALL			
8	BED 1	3rd	DH-HITILT	100	C10	BL	WH				32	54	86			R			Eg ss	STD	PT-W	GBG	BL	WH	COLO NIAL	1	1	ALL			

BAY / BOW WINDOW

SC/Installer Notes: (Include Misc. Labor, Mull Stack Options, special conditions, Use Item # to identify)

Projection Angle: (Bay: 30° or 45°)		Top of Window to Soffit (inches)	
Bay Window Flankers (DH / Casement)		Width of Overhang (inches)	
Construct Roof 1 (Yes / No)		If tied to Soffit, color of Soffit material	

1There is no guarantee that new shingles will match existing color.

NEW DOOR UNIT

ITEM #	Existing Door Type		Andersen Door TYPE	Color/Finish			SC SIZE SOLD (Tip to TIP)			MEASURE TECH SIZE			FULL FRAME ONLY			Grille Options (PER SASH PRICING)				Glass OPTION	Screen Option	Hinge Option	Hinged and Gliding Door Options								MULL / STACK OPTIONS					
	Room	Floor		Series Type CODE	Style CODE	Exterior Color CODE	Interior Finish Color CODE	Standard Size AW Code	Width	Height	TOTAL UI (WIDTH + HEIGHT)	Width	Height	RO / TIP to TIP	Ext Jamb Size	Inswing Jamb Location	Grid Type CODE	PD Exterior Grid Color	PD Interior Grid Color				Pattern/vert (Per Sash)	#Bars Horiz (Per Sash)	#Bars Vert (Per Sash)	Obscure CODE	Screen CODE	IN or OUT	# Panels	Gliding Door Venting / Handing	Hinged Door Venting / Handing	PD Assembly (200, 400, & A-Series gliding only)	Lock HRDWR Type	Lock HRDWR Finish	Optional Keyed Lock	Mulled / Stacked

Approval _____ Print Name JASON LANDER Title Home Owner

Andersen Wood SPEC SHEET

Branch Name: New England North

Ship To Location:

SC: Richard O

Job #: 1-RF700HI

Customer Name: JASON LANDER

Measure Tech:

Prepared By:

Date: 02/21/2020

INSTALLER:

ISM:

Pag

NEW WINDOW UNIT																																
ITEM #	Existing Window Type		Andersen Window TYPE	Color/Finish			SC SIZE SOLD (Tip to TIP)			MEASURE TECH SIZE			FULL FRAME ONLY	DH INSERT ONLY	Frame Sash Options	Casement Handling Options				Glass OPTION	Screen (Standard is included in Base price)	Grille Options (PER SASH PRICING)										
	Room	Floor		Existing Window Code	Series Type CODE	Window Style CODE	Exterior Color CODE	Interior Finish Color CODE	TW Jamb Liner Color	Standard Size AW Code	Width	Height				TOTAL UI (WIDTH + HEIGHT)	Width	Height	MT/ISM Standard Size CODE			WALL DEPTH	SILL ANGLE	Sash Split	Venting / Handing	Hinge Style	Temp CODE	Screen Options	Grid Type CODE	Exterior Grid Color	Interior Grid Color	Pattern CODE
9	BED 4	2nd	DH-HITILT	100	SH	BL	WH			36	65	101								STD	PT-W	GBG	BL	WH	COLO NIAL	1, 1		ALL				
10	BED 4	2nd	DH-HITILT	100	SH	BL	WH			36	65	101								STD	PT-W	GBG	BL	WH	COLO NIAL	1, 1		ALL				
11	BED 4	2nd	DH-HITILT	100	SH	BL	WH			36	65	101								STD	PT-W	GBG	BL	WH	COLO NIAL	1, 1		ALL				
12	BED 4	2nd	DH-HITILT	100	SH	BL	WH			36	65	101								STD	PT-W	GBG	BL	WH	COLO NIAL	1, 1		ALL				

BAY / BOW WINDOW										SC/Installer Notes: (Include Misc. Labor, Mull Stack Options, special conditions, Use Item # to Identify)									
Projection Angle: (Bay: 30° or 45°)					Top of Window to Soffit (inches)														
Bay Window Flankers (DH / Casement)					Width of Overhang (inches)														
Construct Roof 1 (Yes / No)					If tied to Soffit, color of Soffit material														

There is no guarantee that new shingles will match existing color.

NEW DOOR UNIT																																		
ITEM #	Existing Door Type		Andersen Door TYPE	Color/Finish			SC SIZE SOLD (Tip to TIP)			MEASURE TECH SIZE			FULL FRAME ONLY			Grille Options (PER SASH PRICING)				Glass OPTION	Screen Option	Hinge Option	Hinged and Gliding Door Options								MULL / STACK OPTIONS			
	Room	Floor		Existing Door Code	Series Type CODE	Style CODE	Exterior Color CODE	Interior Finish Color CODE	Standard Size AW Code	Width	Height	TOTAL UI (WIDTH + HEIGHT)	Width	Height	RO / TIP to TIP	Ext Jamb Size	Inswing Jamb Location	Grid Type CODE	PD Exterior Grid Color				PD Interior Grid Color	Pattern CODE	#Bars Vert (Sash)	#Bars Horiz (Sash)	Obscure CODE	Screen CODE	IN or OUT	# Panels	Gliding Door Venting / Handing	Hinged Door Venting / Handing	PD Assembly (200, 400, & A-Ser gliding only)	Lock HRDWR Type

Approval _____ Print Name JASON LANDER Title Home Owner

Andersen Wood SPEC SHEET

Branch Name: New England North

Ship To Location:

SC: Richard O

Job #: 1-RF700HI

Customer Name: JASON LANDER

Measure Tech:

Prepared By:

Date: 02/21/2020

INSTALLER:

ISM:

Pag

NEW WINDOW UNIT																															
ITEM	Existing Window Type		Andersen Window TYPE	Color/Finish				SC SIZE SOLD (Tip to TIP)			MEASURE TECH SIZE				FULL FRAME ONLY	DH INSERT ONLY	Frame Sash Options	Casement Handling Options				Glass OPTION	Screen (Standard is included in Base price)	Grille Options (PER SASH PRICING)							
	Room	Floor		Series Type CODE	Window Style CODE	Exterior Color CODE	Interior Finish Color CODE	TW Jamb Liner Color	Standard Size AW Code	Width	Height	TOTAL UI (WIDTH + HEIGHT)	Width	Height				MT/ISM Standard Size CODE	WALL DEPTH	SILL ANGLE	Sash Split			Venting / Handing	Hinge Style	Temp CODE	Screen Options	Grid Type CODE	Exterior Grid Color	Interior Grid Color	Pattern CODE
13	BED 4	2nd	DH-HITILT	100	SH	BL	WH				36	65	101								STD	PT-W	GBG	BL	WH	COLO NIAL	1, 1		ALL		
14	BED 4	2nd	DH-HITILT	100	SH	BL	WH				32	40	72								STD	PT-W	GBG	BL	WH	COLO NIAL	1, 1		ALL		
15	BED 4	3rd	DH-HITILT	100	SH	BL	WH				28	45	73								STD	PT-W	GBG	BL	WH	COLO NIAL	1, 1		ALL		
16	BED 4	3rd	DH-HITILT	100	C10	BL	WH				32	54	86			L				Egrees	STD	PT-W	GBG	BL	WH	COLO NIAL	1	1	ALL		

BAY / BOW WINDOW										SC/Installer Notes: (include Misc. Labor, Mull Stack Options, special conditions, Use Item # to identify)									
Projection Angle: (Bay: 30° or 45°)					Top of Window to Soffit (inches)														
Bay Window Flankers (DH / Casement)					Width of Overhang (inches)														
Construct Roof 1 (Yes / No)					If tied to Soffit, color of Soffit material														

NEW DOOR UNIT																																								
ITEM #	Existing Door Type		Andersen Door TYPE	Color/Finish				SC SIZE SOLD (Tip to TIP)				MEASURE TECH SIZE				FULL FRAME ONLY				Grille Options (PER SASH PRICING)								Glass OPTION	Screen Option	Hinge Option	Hinged and Gliding Door Options								MULL / STACK OPTIONS	
	Room	Floor		Series Type CODE	Style CODE	Exterior Color CODE	Interior Finish Color CODE	Standard Size AW Code	Width	Height	TOTAL UI (WIDTH + HEIGHT)	Width	Height	RO / TIP to TIP	Ext Jamb Size	Inswing Jamb Location	Grid Type CODE	PD Exterior Grid Color	PD Interior Grid Color	Pattern CODE	#Bars Vert (Sash)	#Bars Horiz (Sash)	Obscure CODE	Screen CODE	IN or OUT	# Panels	Gliding Door Venting / Handing				Hinged Door Venting / Handing	PD Assembly (200, 400, & A-Series gliding only)	Lock HRDWR Type	Lock HRDWR Finish	Optional Keyed Lock	Mulled / Stacked	Spe Not			

Approval _____ Print Name JASON LANDER Title Home Owner

Andersen Wood SPEC SHEET

Branch Name: New England North

Ship To Location:

SC: Richard O

Job #: 1-RF700HI

Customer Name: JASON LANDER

Measure Tech:

Prepared By:

Date: 02/21/2020

INSTALLER:

ISM:

Page

NEW WINDOW UNIT

ITEM #	Existing Window Type		Andersen Window TYPE	Color/Finish			SC SIZE SOLD (Tip to TIP)			MEASURE TECH SIZE			FULL FRAME ONLY	DH INSERT ONLY	Frame Sash Options	Casement Handling Options				Glass OPTION	Screen (Standard is included in Base price)	Grille Options (PER SASH PRICING)								
	Room	Floor		Series Type CODE	Window Style CODE	Exterior Color CODE	Interior Finish Color CODE	TW Jamb Liner Color	Standard Size AW Code	Width	Height	TOTAL UI (WIDTH + HEIGHT)				Width	Height	MT/ISM Standard Size CODE	WALL DEPTH			SILL ANGLE	Sash Split	Venting / Handling	Hinge Style	Temp CODE	Screen Options	Grid Type CODE	Exterior Grid Color	Interior Grid Color
17	BED 2	1st	DH-HITILT	100	SH	BL	WH		37	69	106								STD	PT-W	GBG	BL	WH	COLO NIAL	1, 1		ALL			
18	BED 2	1st	DH-HITILT	100	SH	BL	WH		37	69	106								STD	PT-W	GBG	BL	WH	COLO NIAL	1, 1		ALL			
19	BED 2	1st	DH-HITILT	100	SH	BL	WH		37	69	106								STD	PT-W	GBG	BL	WH	COLO NIAL	1, 1		ALL			
20	BED 2	1st	DH-HITILT	100	SH	BL	WH		37	61	98								STD	PT-W	GBG	BL	WH	COLO NIAL	1, 1		ALL			

BAY / BOW WINDOW

SC/Installer Notes: (Include Misc. Labor, Mull Stack Options, special conditions, Use Item # to identify)

Projection Angle: (Bay: 30° or 45°)	Top of Window to Soffit (inches)
Bay Window Flankers (DH / Casement)	Width of Overhang (inches)
Construct Roof 1 (Yes / No)	If tied to Soffit, color of Soffit material

1 There is no guarantee that new shingles will match existing color.

NEW DOOR UNIT

ITEM #	Existing Door Type		Andersen Door TYPE	Color/Finish			SC SIZE SOLD (Tip to TIP)			MEASURE TECH SIZE			FULL FRAME ONLY			Grille Options (PER SASH PRICING)				Glass OPTION	Screen Option	Hinge Option	Hinged and Gliding Door Options								MULL / STAC OPTIONS					
	Room	Floor		Series Type CODE	Door Style CODE	Exterior Color CODE	Interior Finish Color CODE	Standard Size AW Code	Width	Height	TOTAL UI (WIDTH + HEIGHT)	Width	Height	RO / TIP to TIP	Ext Jamb Size	Inswing Jamb Location	Grid Type CODE	PD Exterior Grid Color	PD Interior Grid Color				Pattern Code	#Bars Vert (Sash)	#Bars Horiz (Sash)	Obscure CODE	Screen CODE	IN or OUT	# Panels	Gliding Door Venting / Handling	Hinged Door Venting / Handling	PD Assembly (200, 400, & A-Ser gliding only)	Lock HRDWR Type	Lock HRDWR Finish	Optional Keyed Lock	Mulled / Stacked

Approval _____ Print Name JASON LANDER Title Home Owner

Andersen Wood SPEC SHEET

Branch Name: New England North

Ship To Location:

SC: Richard O

Job #: 1-RF700HI

Customer Name: JASON LANDER

Measure Tech:

Prepared By:

Date: 02/21/2020

INSTALLER:

ISM:

Page

NEW WINDOW UNIT

ITEM #	Existing Window Type		Andersen Window TYPE		Color/Finish		SC SIZE SOLD (Tip to TIP)			MEASURE TECH SIZE			FULL FRAME ONLY			DH INSERT ONLY			Frame Sash Options			Casement Handling Options			Glass OPTION		Screen (Standard is included in Base price)		Grille Options (PER SASH PRICING)					
	Room	Floor	Series CODE	Window Style CODE	Exterior Color CODE	Interior Color CODE	TW Jamb Liner Color	Standard Size AW	Width	Height	TOTAL UI (WIDTH + HEIGHT)	Width	Height	MT/ISM Standard Size CODE	WALL DEPTH	SILL ANGLE	Sash Split	Venting / Handling	Hinge Style	Temp CODE	Screen Options	Grid Type CODE	Exterior Grid Color	Interior Grid Color	Pattern CODE	# Bars Vert (per sash)	# Bars Horiz (per sash)	Location CODE	#Bars Vert (Per Sash)	#Bars Horiz (Per Sash)				
21	BED 2	1st	DH-HITILT	100	SH	BL	WH		32	41	73									STD	PT-W	GBG	BL	WH	COLO NIAL	1, 1		ALL						
22	BED 2	1st	DH-HITILT	100	SH	BL	WH		22	37	59									STD	PT-W	GBG	BL	WH	COLO NIAL	1, 1		ALL						
23	BED 3	1st	DH-HITILT	100	SH	BL	WH		37	69	106									STD	PT-W	GBG	BL	WH	COLO NIAL	1, 1		ALL						
24	BED 3	1st	DH-HITILT	100	SH	BL	WH		37	69	106									STD	PT-W	GBG	BL	WH	COLO NIAL	1, 1		ALL						

BAY / BOW WINDOW

SC/Installer Notes: (Include Misc. Labor, Mull Stack Options, special conditions, Use Item # to Identify)

Projection Angle: (Bay: 30° or 45°)	Top of Window to Soffit (inches)
Bay Window Flankers (DH / Casement)	Width of Overhang (inches)
Construct Roof 1 (Yes / No)	If tied to Soffit, color of Soffit material

There is no guarantee that new shingles will match existing color.

NEW DOOR UNIT

ITEM #	Existing Door Type		Andersen Door TYPE		Color/Finish		SC SIZE SOLD (Tip to TIP)			MEASURE TECH SIZE			FULL FRAME ONLY			Grille Options (PER SASH PRICING)						Glass OPTION		Screen Option		Hinge Option		Hinged and Gliding Door Options						MULL / STAC OPTIONS	
	Room	Floor	Series CODE	Door Style CODE	Exterior Color CODE	Interior Color CODE	Standard Size AW	Width	Height	TOTAL UI (WIDTH + HEIGHT)	Width	Height	RO / TIP to TIP	Ext Jamb Size	Inswing Jamb Location	Grid Type CODE	PD Exterior Grid Color	PD Interior Grid Color	Pattern CODE	#Bars Vert (Sash)	#Bars Horiz (Sash)	Obscure CODE	Screen CODE	IN or OUT	# Panels	Gliding Door Venting / Handling	Hinged Door Venting / Handling	PD Assembly (200, 400, & A-Ser gliding only)	Lock HRDWR Type	Lock HRDWR Finish	Optional Keyed Lock	Mulled / Stacked	Spe Not		

Approval _____ Print Name JASON LANDER Title Home Owner

Andersen Wood SPEC SHEET

Branch Name: New England North

Ship To Location:

SC: Richard O

Job #: 1-RF700HI

Customer Name: JASON LANDER

Measure Tech:

Prepared By:

Date: 02/21/2020

INSTALLER:

ISM:

Pag

NEW WINDOW UNIT

ITEM #	Existing Window Type		Andersen Window TYPE	Color/Finish			SC SIZE SOLD (Tip to TIP)			MEASURE TECH SIZE			FULL FRAME ONLY	DH INSERT ONLY	Frame Sash Options	Casement Handling Options				Glass OPTION	Screen (Standard is included in Base price)	Grille Options (PER SASH PRICING)									
	Room	Floor		Existing Window Code	Series Type CODE	Window Style CODE	Exterior Color CODE	Interior Finish Color CODE	TW Jamb Liner Color	Standard Size AW Code	Width	Height				TOTAL UI (WIDTH + HEIGHT)	Width	Height	MT/SM Standard Size CODE			WALL DEPTH	SILL ANGLE	Sash Split	Venting / Handing	Hinge Style	Temp CODE	Screen Options	Grid Type CODE	Exterior Grid Color	Interior Grid Color
25	BED 3	1st	DH-HITILT	100	SH	BL	WH			37	69	106								STD	PT-W	GBG	BL	WH	COLO NIAL	1, 1		ALL			
26	BED 3	1st	DH-HITILT	100	SH	BL	WH			37	61	98								STD	PT-W	GBG	BL	WH	COLO NIAL	1, 1		ALL			
27	BED 3	1st	DH-HITILT	100	SH	BL	WH			32	41	73								STD	PT-W	GBG	BL	WH	COLO NIAL	1, 1		ALL			
28	BED 3	1st	DH-HITILT	100	SH	BL	WH			22	37	59								STD	PT-W	GBG	BL	WH	COLO NIAL	1, 1		ALL			

BAY / BOW WINDOW

SC/Installer Notes: (Include Misc. Labor, Mull Stack Options, special conditions, Use Item # to identify)

Projection Angle: (Bay: 30° or 45°)	Top of Window to Soffit (inches)
Bay Window Flankers (DH / Casement)	Width of Overhang (inches)
Construct Roof 1 (Yes / No)	If tied to Soffit, color of Soffit material

There is no guarantee that new shingles will match existing color.

NEW DOOR UNIT

ITEM #	Existing Door Type		Andersen Door TYPE	Color/Finish			SC SIZE SOLD (Tip to TIP)			MEASURE TECH SIZE			FULL FRAME ONLY			Grille Options (PER SASH PRICING)							Glass OPTION	Screen Option	Hinge Option	Hinged and Gliding Door Options							MULL / STACK OPTIONS				
	Room	Floor		Existing Door Code	Series Type CODE	Style CODE	Exterior Color CODE	Interior Finish Color CODE	Standard Size AW Code	Width	Height	TOTAL UI (WIDTH + HEIGHT)	Width	Height	RO / TIP to TIP	Ext Jamb Size	Inswing Extension Jamb Location	Grid Type CODE	PD Exterior Grid Color	PD Interior Grid Color	Pattern CODE	#Bars Vert (Sash)				#Bars Horiz (Sash)	Obscure CODE	Screen CODE	IN or OUT	# Panels	Gliding Door Venting / Handing	Hinged Door Venting / Handing	PD Assembly (200, 400, & A-Ser gliding only)	Lock HRDWR Type	Lock HRDWR Finish	Optional Keyed Lock	Mulled / Stacked

Approval _____ Print Name JASON LANDER Title Home Owner

Andersen Wood SPEC SHEET

Branch Name: New England North

Ship To Location:

SC: Richard O

Job #: 1-RF700HI

Customer Name: JASON LANDER

Measure Tech:

Prepared By:

Date: 02/21/2020

INSTALLER:

ISM:

Pag

NEW WINDOW UNIT																															
ITEM	Existing Window Type		Andersen Window TYPE	Color/Finish				SC SIZE SOLD (Tip to TIP)			MEASURE TECH SIZE				FULL FRAME ONLY	DH INSERT ONLY	Frame Sash Options	Casement Handling Options				Glass OPTION	Screen (Standard is included in Base price)	Grille Options (PER SASH PRICING)							
	Room	Floor		Series CODE	Window Style CODE	Exterior Color CODE	Interior Finish Color CODE	TW Jamb Liner Color	Standard Size AW	Width	Height	TOTAL UI (WIDTH + HEIGHT)	Width	Height				MT/ISM Standard Size CODE	WALL DEPTH	SILL ANGLE	Sash Split			Venting / Handing	Hinge Style	Temp CODE	Screen Options	Grid Type CODE	Exterior Grid Color	Interior Grid Color	Pattern CODE
29	BS MT	Base	DH-HITILT	100	SH	BL	WH				32	54	86								STD	PT-W	GBG	BL	WH	COLO NIAL	1, 1		ALL		
30	BS MT	Base	DH-HITILT	100	SH	BL	WH				32	54	86								STD	PT-W	GBG	BL	WH	COLO NIAL	1, 1		ALL		
31	BS MT	Base	DH-HITILT	100	SH	BL	WH				32	54	86								STD	PT-W	GBG	BL	WH	COLO NIAL	1, 1		ALL		
32	BS MT	Base	DH-HITILT	100	SH	BL	WH				32	54	86								STD	PT-W	GBG	BL	WH	COLO NIAL	1, 1		ALL		

BAY / BOW WINDOW										SC/Installer Notes: (include Misc. Labor, Mull Stack Options, special conditions, Use Item # to Identify)																	
Projection Angle: (Bay: 30° or 45°)										Top of Window to Soffit (inches)																	
Bay Window Flankers (DH / Casement)										Width of Overhang (inches)																	
Construct Roof 1 (Yes / No)										If tied to Soffit, color of Soffit material																	

NEW DOOR UNIT																																		
ITEM #	Existing Door Type		Andersen Door TYPE	Color/Finish				SC SIZE SOLD (Tip to TIP)			MEASURE TECH SIZE				FULL FRAME ONLY	Grille Options (PER SASH PRICING)							Glass OPTION	Screen Option	Hinge Option	Hinged and Gliding Door Options							MULL / STACK OPTIONS	
	Room	Floor		Series CODE	Style CODE	Exterior Color CODE	Interior Finish Color CODE	Standard Size AW	Width	Height	TOTAL UI (WIDTH + HEIGHT)	Width	Height	RO / TIP		Inswing Ext Jamb Location	Grid Type CODE	PD Exterior Grid Color	PD Interior Grid Color	Pattern CODE	#Bars Vert (Per Sash)	#Bars Horiz (Per Sash)				Obscure CODE	Screen CODE	IN or OUT	# Panels	Gliding Door Venting / Handing	Hinged Door Venting / Handing	PD Assembly (200, 400, & A-Series gliding only)	Lock HRDWR Type	Lock HRDWR Finish

Andersen Wood SPEC SHEET

Branch Name: New England North

Ship To Location:

SC: Richard O

Job #: 1-RF700HI

Customer Name: JASON LANDER

Measure Tech:

Prepared By:

Date: 02/21/2020

INSTALLER:

ISM:

Page

NEW WINDOW UNIT

ITEM #	Existing Window Type		Andersen Window TYPE		Color/Finish			SC SIZE SOLD (Tip to TIP)			MEASURE TECH SIZE			FULL FRAME ONLY	DH INSERT ONLY	Frame Sash Options	Casement Handling Options				Glass OPTION	Screen (Standard is included in Base price)	Grille Options (PER SASH PRICING)									
	Room	Floor	Existing Window Code	Series Type CODE	Window Style CODE	Exterior Color CODE	Interior Finish Color CODE	TW Jamb Liner Color	Standard Size AW Code	Width	Height	TOTAL UI (WIDTH + HEIGHT)	Width				Height	MT/SM Standard Size CODE	WALL DEPTH	SILL ANGLE			Sash Split	Venting / Handing	Hinge Style	Temp CODE	Screen Options	Grid Type CODE	Exterior Grid Color	Interior Grid Color	Pattern CODE	# Bars Vert (per sash)
33	BS MT	Base	DH-HITILT	100	SH	BL	WH			32	54	86								STD	PT-W		GBG	BL	WH	COLO NIAL	1, 1		ALL			

BAY / BOW WINDOW

SC/Installer Notes: (Include Misc. Labor, Mull Stack Options, special conditions, Use Item # to Identify)

Projection Angle: (Bay: 30° or 45°)		Top of Window to Soffit (inches)	
Bay Window Flankers (DH / Casement)		Width of Overhang (inches)	
Construct Roof 1 (Yes / No)		If tied to Soffit, color of Soffit material	

1There is no guarantee that new shingles will match existing color.

NEW DOOR UNIT

ITEM #	Existing Door Type		Andersen Door TYPE		Color/Finish			SC SIZE SOLD (Tip to TIP)			MEASURE TECH SIZE			FULL FRAME ONLY		Grille Options (PER SASH PRICING)						Glass OPTION	Screen Option	Hinge Option	Hinged and Gliding Door Options						MULL / STACK OPTIONS		
	Room	Floor	Existing Door Code	Series Type CODE	Style CODE	Exterior Color CODE	Interior Finish Color CODE	Standard Size AW Code	Width	Height	TOTAL UI (WIDTH + HEIGHT)	Width	Height	RO / TIP to TIP	Ext Jamb Size	Inswing Jamb Location	Grid Type CODE	PD Exterior Grid Color	PD Interior Grid Color	Pattern CODE	#Bars Vert (Sash)				#Bars Horiz (Sash)	Obscure CODE	Screen CODE	IN or OUT	# Panels	Gliding Door Venting / Handing	Hinged Door Venting / Handing	PD Assembly (200, 400, & A-Series gliding only)	Lock HRDWR Type

Approval _____ Print Name JASON LANDER Title Home Owner



A-SERIES
WINDOWS & DOORS

ARCHITECTURALLY INSPIRED,
PREMIUM WOOD WINDOWS & PATIO DOORS

andersenhomedepot.com



A-Series

WINDOWS AND PATIO DOORS

**Authentic to Style.
Authentic to You.**

Your home's architectural style says a lot about you. A-Series products allow it to speak with authenticity and clarity.

The windows and patio doors in this series were designed in conjunction with leading architects to ensure each is authentic to the architectural style you select. Whether it's a stately Queen Anne, a bold Modernist design or anything in between, you can create it with A-Series products.

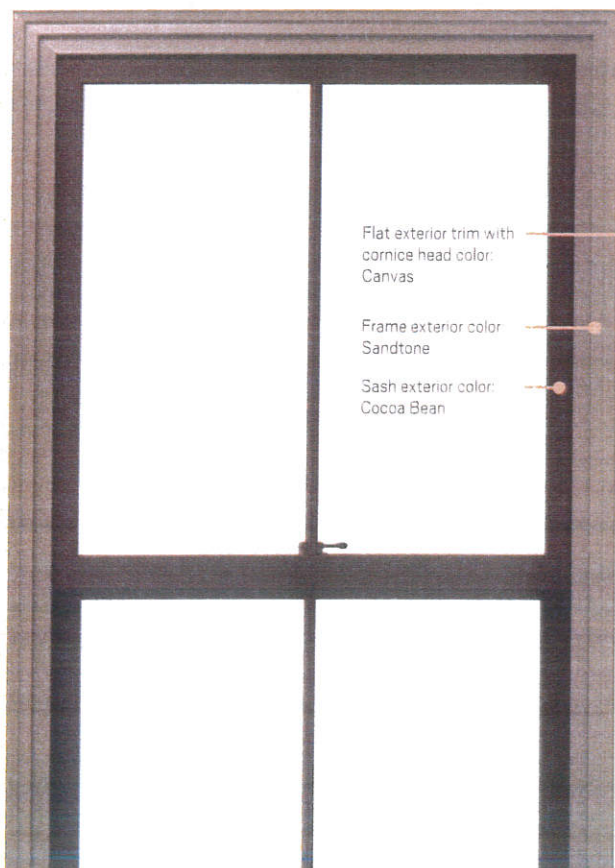


Interior finishes: A-Series windows and patio doors offer six different factory stains, two paint choices or a primed finish to complement any look. **Page 15.**

Exterior colors: With 11 different colors, you can mix and match sash, frame and trim to achieve hundreds of combinations. **Page 12.**



A-Series double-hung windows and Frenchwood® outswing patio doors.



Flat exterior trim with
cornice head color:
Canvas

Frame exterior color:
Sandtone

Sash exterior color:
Cocoa Bean



Architectural Style Made Easy.

The Craftsman Bungalow-style home featured above is shown with quintessential Andersen® A-Series window and patio door combinations. It's one of several styles in the Andersen Home Style Library. For more information about the library, see the following pages or visit andersenhomedepot.com/stylelibrary