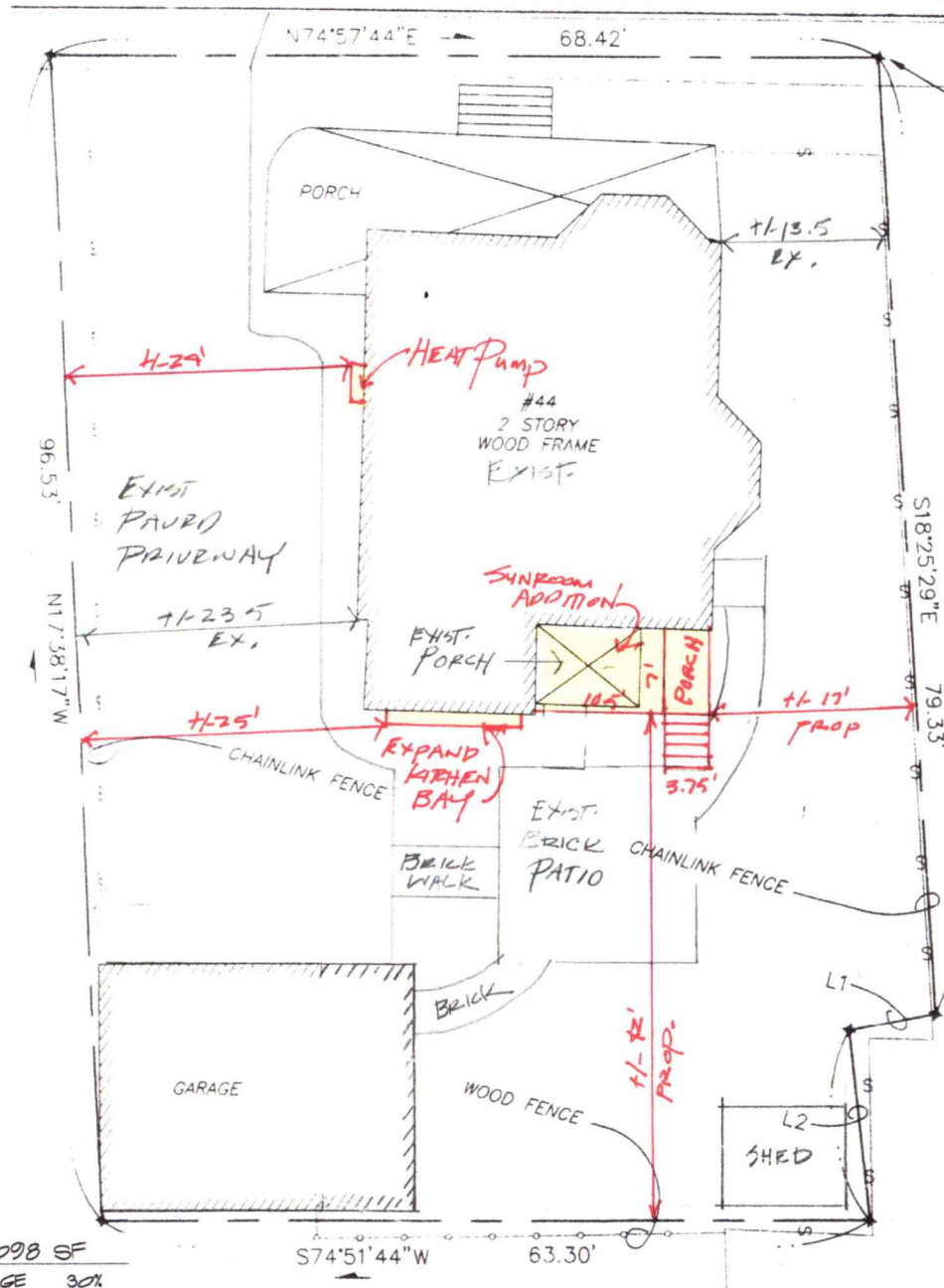


# GARDNER STREET



LOT AREA 6098 SF

ALLOWABLE LOT COVERAGE 30%

**EXISTING LOT COVERAGE**

RESIDENCE	1121 SF
FRONT PORCH	306 SF
REAR PORCH	60 SF
KITCHEN BAY	8 SF
STEPS OVER 18"	35 SF
GARAGE	533 SF
SHED	80 SF

2137 SF (35%)

**PROPOSED LOT COVERAGE**

EX. RESIDENCE	1121 SF
EX. FRONT PORCH	306 SF
EX. FRONT STEPS OVER 18"	35 SF
EX. GARAGE	533 SF
EX. SHED	80 SF
EXPANDED KITCHEN BAY	13 SF
SUNROOM TO REPLACE PORCH	74 SF
NEW REAR PORCH	26 SF
NEW LANDING & STEPS OVER 18"	28 SF

2207 SF (36%)



**PROPOSED LOT PLAN**

SCALE: 1" = 10'-0"

MAP 103 LOT 42  
GENERAL RESIDENCE A (GRA)



3 Granite Street  
Portsmouth  
NH 03801  
603-427-2832

**AWA**

**ANNE WHITNEY ARCHITECT**  
MES RESIDENCE  
44 GARDNER ST, PORTSMOUTH, NH

Project: 1906  
Date: 2/21/20



STAR WINDOW & HEATPUMP LOCATION



HEAT PUMP ENCLOSURE OR EQUAL

W I N D O W      S C H E D U L E

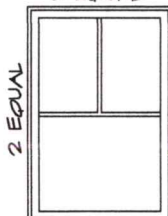
SYM.	UNIT	LITES	ROUGH OPENING	REMARKS	QUAN.
A D D I T I O N					
Ⓐ	UDHG2 2826	2/1	2' 10 1/4" X 5' 0"	MARVIN INC., CLAD DOUBLEHUNG NG, 7/8" SDL w/ Low E Glazing, Cladding - "Stone White" Hardware to be chosen by Owner. Full Screen, New 2x6 Wall	6
Ⓑ	UDHG2 1626	1/1	1' 10 1/4" X 5' 0"	DITTO, Picture Unit	1
Ⓒ	UDHG2 Match Exist.	2/1	Match Existing	DITTO, In Existing Wall	1
Ⓓ	UCA 3248	type 1	2' 9" x 3' 11 5/8"	MARVIN INC., ULTIMATE CLAD CASEMENT, 7/8" SDL w/ Low E Glazing, Cladding - "Stone White" Hardware to be chosen by Owner. Full Screen, New 2x6 Wall	3

E X T E R I O R   D O O R   S C H E D U L E

SYM.	UNIT/SIZE	LITES	ROUGH OPNG.	REMARKS	QUAN.
Ⓘ	UIFD 2868	6	2' 10 7/16" x 6' 10 1/2"	MARVIN INC., CLAD INSWING FRENCH DOOR, 7/8" sdl w/ Low E Glazing, Cladding - Stone White, Hardware to be chosen by Owner.	1

W I N D O W - E X T . D O O R   N O T E S

- SUBMIT FINAL WINDOW/DOOR ORDER & SHOP DRAWINGS TO ARCHITECT FOR APPROVAL BEFORE ORDERING
- TYPE 1, 7/8" SDLs      2 EQUAL



DOUBLE HUNG G2

MO (mm)	1'9 3/4 (552)	2-1 3/4 (654)	2-5 3/4 (756)	2-7 3/4 (806)	2-9 3/4 (857)	2-11 3/4 (908)
RO (mm)	1-10 1/4 (565)	2-2 1/4 (667)	2-6 1/4 (768)	2-8 1/4 (819)	2-10 1/4 (870)	3-0 1/4 (921)
FS (mm)	1-9 1/4 (540)	2-1 1/4 (641)	2-5 1/4 (743)	2-7 1/4 (794)	2-9 1/4 (845)	2-11 1/4 (895)
DLO (mm)	14 47/64 (347)	18 47/64 (476)	22 47/64 (577)	24 47/64 (628)	26 47/64 (679)	28 47/64 (730)
4-7 3/4 (806)						
2-8 (813)						
2-7 1/2 (800)						
10 3/4 (273)						
4-11 3/4 (1518)						
5-0 (1524)						
4-11 1/2 (1511)						
24 3/4 (628)						

CASEMENT / CASEMENT PUSH OUT

MO (mm)	1 - 4 1/2 (419)	1 - 6 1/2 (469)	1 - 8 1/2 (520)	2 - 1/2 (622)	2 - 2 1/2 (673)	2 - 4 1/2 (723)	2 - 6 1/2 (774)	2 - 8 1/2 (825)	3 - 1/2 (900)
RO (mm)	1 - 5 (431)	1 - 7 (482)	1 - 9 (533)	2 - 1 (635)	2 - 3 (685)	2 - 5 (736)	2 - 7 (787)	2 - 9 (838)	3 - 1 (900)
FS (mm)	1 - 4 (406)	1 - 6 (457)	1 - 8 (508)	2 - 0 (609)	2 - 2 (660)	2 - 4 (711)	2 - 6 (762)	2 - 8 (812)	3 - 0 (900)
DLO (mm)	0 - 10 13/64 (259)	1 - 0 13/64 (310)	1 - 2 13/64 (361)	1 - 6 13/64 (462)	1 - 8 13/64 (513)	1 - 10 13/64 (564)	2 - 0 13/64 (615)	2 - 2 13/64 (666)	2 - 6 13/64 (717)
3 - 7 3/8 (1101)									
3 - 7 5/8 (1108)	UCA1644	UCA1844	UCA2044	UCA2444	UCA2644	UCA2844	UCA3044 E	UCA3244 E	UCA364
3 - 7 7/8 (1095)	UCAPO1644	UCAPO1844	UCAPO2044	UCAPO2444	UCAPO2644	UCAPO2844 E	UCAPO3044 E	UCAPO3244 E	UCAPO36
3 - 1 3/8 (1203)									
3 - 11 5/8 (1209)	UCA1648	UCA1848	UCA2048	UCA2448	UCA2648	UCA2848 E	UCA3048 E	UCA3248 E	UCA364
3 - 11 7/8 (1196)	UCAPO1648	UCAPO1848	UCAPO2048	UCAPO2448	UCAPO2648	UCAPO2848 E	UCAPO3048 E	UCAPO3248 E	UCAPO36
3 - 5 21/64 (1050)									

MARVIN SIGNATURE™ COLLECTION | ULTIMATE

1 3/4" INSWING / OUTSWING FRENCH DOOR

6-6R HEIGHT

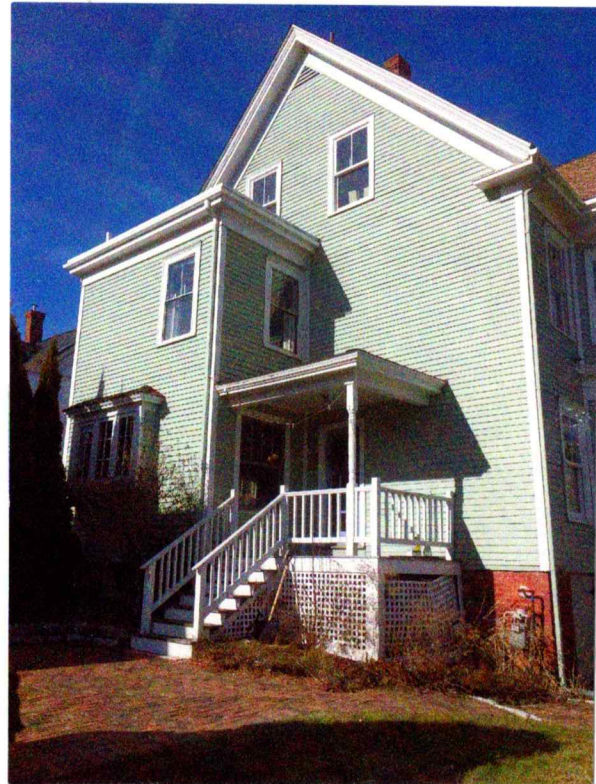
Clad MO (mm)	1-8 11/32 (517)	2-7 1/8 (791)	3-1 1/8 (943)	4-11 1/2 (1511)	5-11 1/2 (1816)	8-9'
Wood MO (mm)	1-10 31/32 (583)	2-9 3/4 (857)	3-3 3/4 (1010)	5-2 1/8 (1578)	6-2 1/8 (1883)	9-0'
RO (mm)	1-8 27/32 (529)	2-7 5/8 (803)	3-1 5/8 (956)	5-0 (1524)	6-0 (1829)	8-10'
FS (mm)	1-7 27/32 (504)	2-6 5/8 (778)	3-0 5/8 (930)	4-11 (1499)	5-11 (1803)	8-9'
DLO (mm)	0-11 1/2 (292)	1-6 25/32 (477)	2-0 25/32 (629)	1-6 25/32 (477)	2-0 25/32 (629)	2-0'

6-7 3/4 (2026)						
6-9 1/16 (2058)	1666R	26R66R	30R66R	50R66R	60R66R	8'
6-8 (2032)						
6-7 1/2 (2019)						
5-3 5/8 (1616)						

6-8 HEIGHT (7-0, 8-0 AND 9-0 HEIGHTS SEE BELOW)

Clad MO (mm)	1-8 11/32 (517)	2-1 15/16 (659)	2-7 15/16 (811)	2-9 15/16 (862)
Wood MO (mm)	1-10 31/32 (583)	2-4 9/16 (726)	2-10 9/16 (878)	3-0 9/16 (929)
RO (mm)	1-8 27/32 (529)	2-2 7/16 (672)	2-8 7/16 (824)	2-10 7/16 (875)
FS (mm)	1-7 27/32 (504)	2-1 7/16 (646)	2-7 7/16 (799)	2-9 7/16 (849)
DLO (mm)	0-11 1/2 (292)	11-1 19/32 (345)	1-7 19/32 (498)	1-9 19/32 (548)

6-10 1/4 (2089)				
6-11 9/16 (2122)	1668	2068	2668	2868
6-10 1/2 (2096)	1670	2070	2670	2870
6-10 (2083)	1680	2080	2680	2880
5-6 5/8 (1680)				



EXISTING REAR ELEVATION



REAR ELEVATION  
SCALE: 3/16" = 1'-0"

LEFT SIDE ELEVATION AT SUNROOM  
SCALE: 3/16" = 1'-0"



VIEWS FROM HUNKING



& MECHANIC STREET

SCHMATIC DESIGN

ANNE WHITNEY ARCHITECT

RENOVATIONS, IVES RESIDENCE

44 GARDNER STREET

PORTSMOUTH, NH

Project: #1906

Date: 2/18/20

Revisions: 3/12/20