

01 FIRST FLOOR PLAN

02 SECOND FLOOR PLAN



Pacer Series 450 End Fold Window/Wall System



AGS

WINDOWS

ENTRANCES

PACER 450

STOREFRONT

CUSTOM FAB

METRA

"Our Pacer entrances can be seen throughout Boston's North end where they give a real European sidewalk cafe feel to the restaurants in summer and close securely with insulated glass for winter comfort."

Brian Long
V.P. AGS



Perfect for use in resort and tourist areas where restaurants and gift shops spill out onto the sidewalk, Pacer units ship across the US and can be seen as far west as Hawaii. The Pacer 450 End-fold works well as an entrance or window style opening. Door units glide smoothly on our top edge roller system (shown left) and are securely held in place with high strength pivots. These units may be used with or without a threshold. For added safety and security, Pacer Series entrances feature a hook-bolt lock. As an alternative, the End Fold units may have a single lever, 2-point locking system for simplicity and pleasing aesthetics. Three quarter diameter back to back pull handles are installed and the units are set up for 1/4" or 1" glazing.

Pacer 450 Window/Walls come in a variety of styles and configurations which can include the addition of transoms and swing doors. Custom sizes are our specialty, so give us your opening dimensions and we will manufacture the perfect Endfold System to meet your needs

Featuring narrow or medium stile sliding, folding and fixed panel configurations, the Pacer Series 450 Window/wall is a perfect compliment to AGS's standard flush glazed systems: both 2" x 4-1/2" Flush Glazed System for 1" glass and 1-3/4" x 4-1/2" System for 1/4" glass.

Our standard hardware is shown (right) for our bi-fold door. It provides two points of security with throw rods engaging vertically into the head and sill. The handle rotates 90° from vertical to horizontal to operate the lock. As shown, it makes an attractive yet secure lock when used with one of our many available wood finishes.



Be sure to check out our ["Design Your Own Lock"](#) page for customization ideas.

[Go to Details](#)

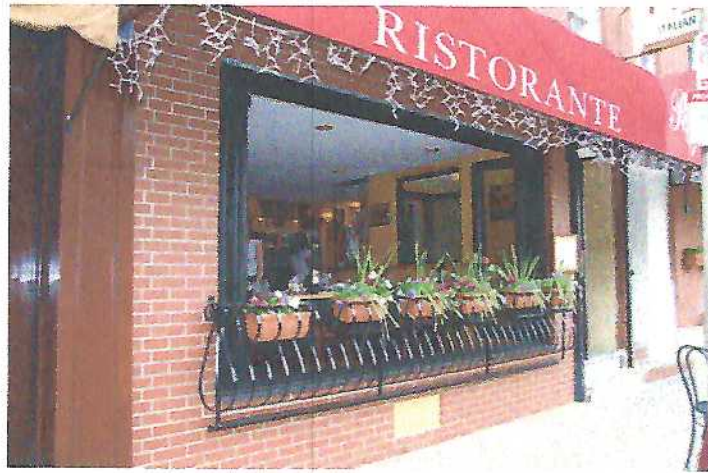
A sidewalk cafe and restaurant can merge when the window wall between them folds away (below).



Shown below, a restaurant interior opens to the street.



A restaurant which can open to enjoy the atmosphere of the street while still maintaining the privacy of a window unit, below



A pastry shop opens on 2 sides to the street .



© 6/2008, Architectural Glazing Systems, Inc.



Customize the Pacer 450 Stacking Door



AGS	WINDOWS	ENTRANCES	PACER 450	STOREFRONT	CUSTOM FAB	METRA
AGS	WINDOWS	ENTRANCES	PACER 450	STOREFRONT	CUSTOM FAB	METRA

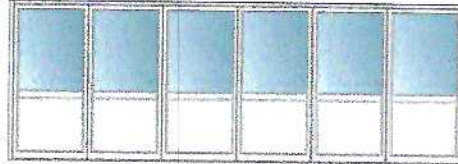
Design Your Own Look

"As a custom fabricator, we offer our customers unique opportunities to creat a custom look for their projects"

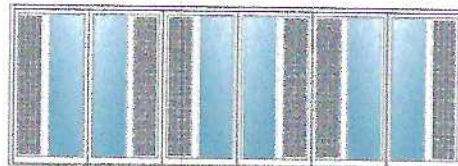
Brian Long

Consider the possibilities! The panels of the Pacer 450 System are constructed from our standard narrow or medium stile door extrusions. Anything design concepts possible in our standard entrances can be achieved in these panels as well.

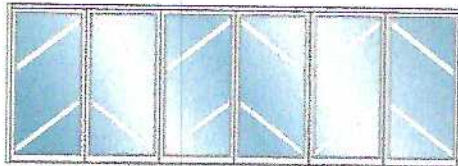
Take your choice of intermediate rails, muntins and panels, then use your imagination to create your perfect entrance! Send us a sketch and see how we can make your dream door a reality.



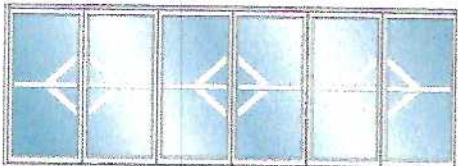
Panels



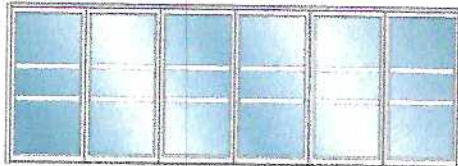
Panels with Patterns, Woodgrain, Painted, or Anodized Finishes



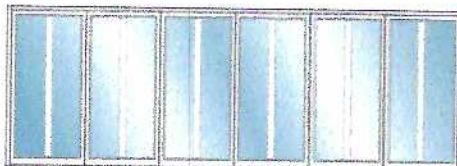
Intermediate Rails



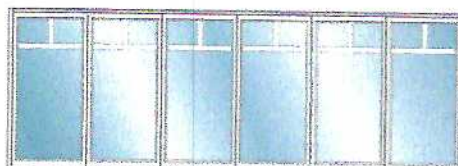
Intermediate Rails



Intermediate Rails

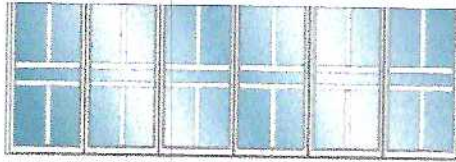


Intermediate Rails

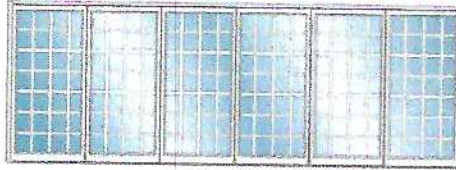


Intermediate Rails

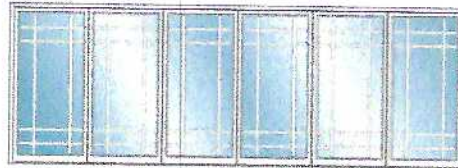
Pacer Series 450 Customization ideas



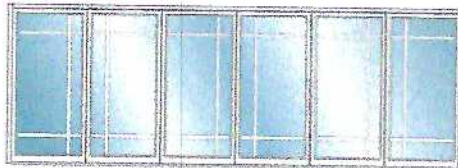
Intermediate Rails



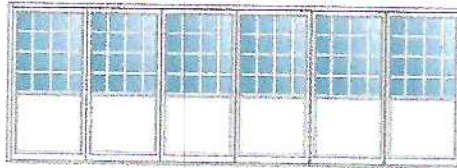
Muntins



Muntins



Muntins

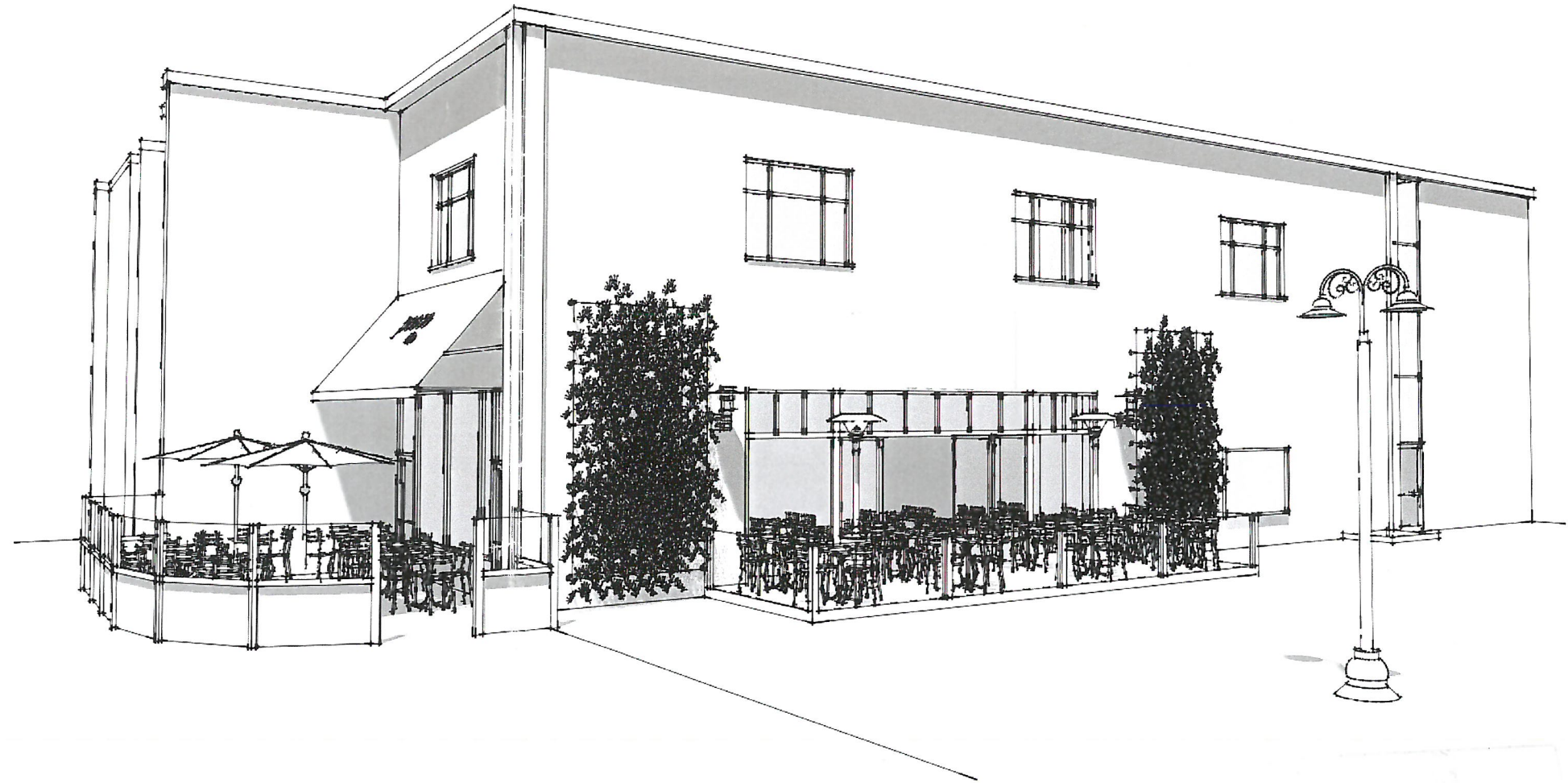


Combine Muntins, Panels, and Rails

© 6/2008, Architectural Glazing Systems, Inc.

SUMNERDAVISARCHITECTS

959 Islington Street • Portsmouth, NH • 603-436-8891 P • 603-436-1121 F



103 Congress Street
Portsmouth, NH 03801



INFORMATION

Issue Date: JUNE 2009
Drawn By: ETNM
Checked By: WKD
Project Number: -

Revision:

- 1.
- 2.
- 3.
- 4.

TITLE

CONCEPTUAL
RENDERING

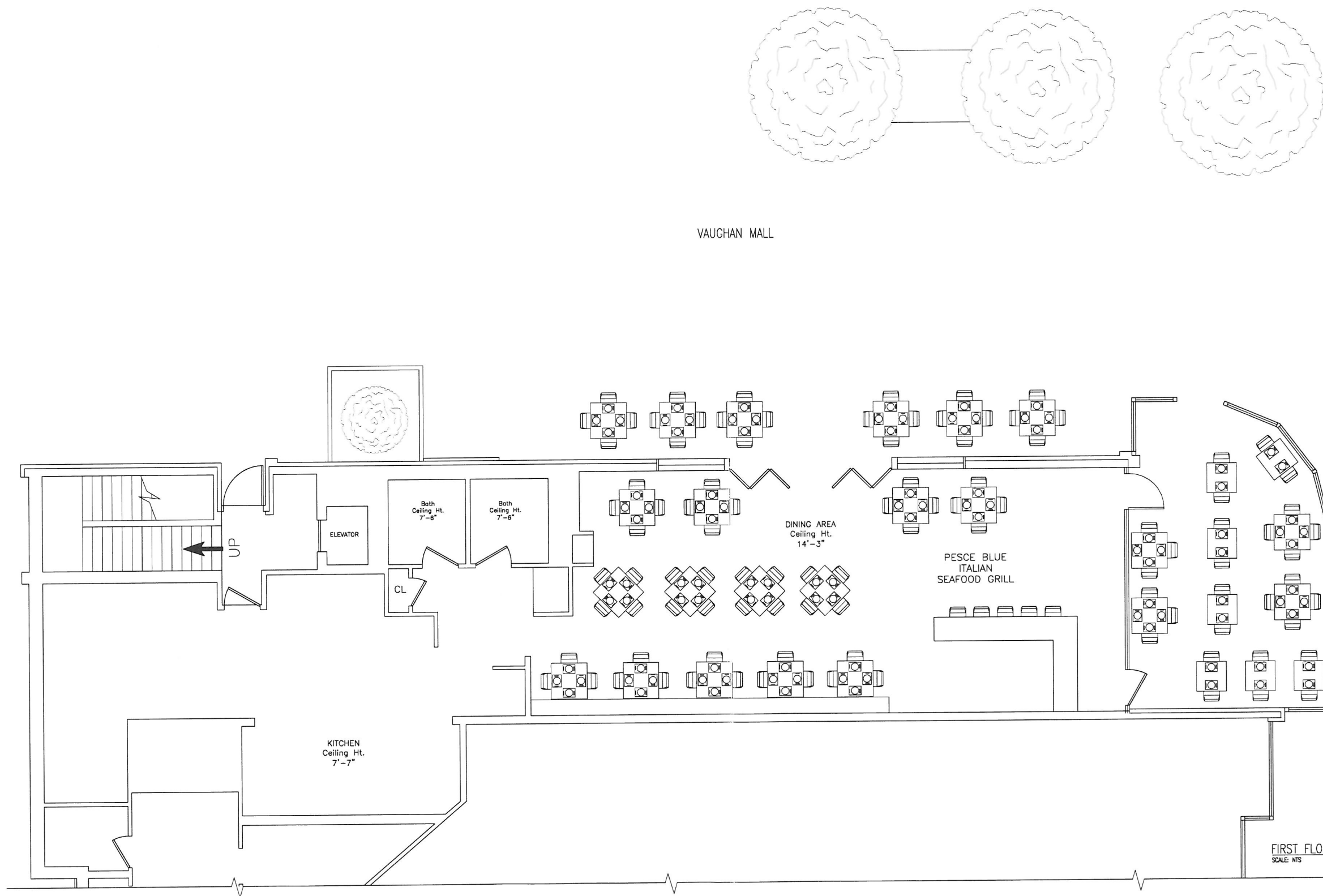
SCALE: AS NOTED

©2008 Sumner Davis Architects Inc. All rights reserved. Information, material, and designs in this document are proprietary to and owned by Sumner Davis Architects Inc. and may not be disclosed to any third party, reproduced, posted on a global computer information network, or distributed in any way without the written consent from Sumner Davis Architects Inc.

A0.01

SHEET NUMBER

103 Congress Street
 Portsmouth, NH 03801



INFORMATION

Issue Date: JUNE 2009
 Drawn By: ETNM
 Checked By: WKD
 Project Number: -

Revision:

- 1.
- 2.
- 3.
- 4.

TITLE

PROPOSED
 FLOOR PLAN

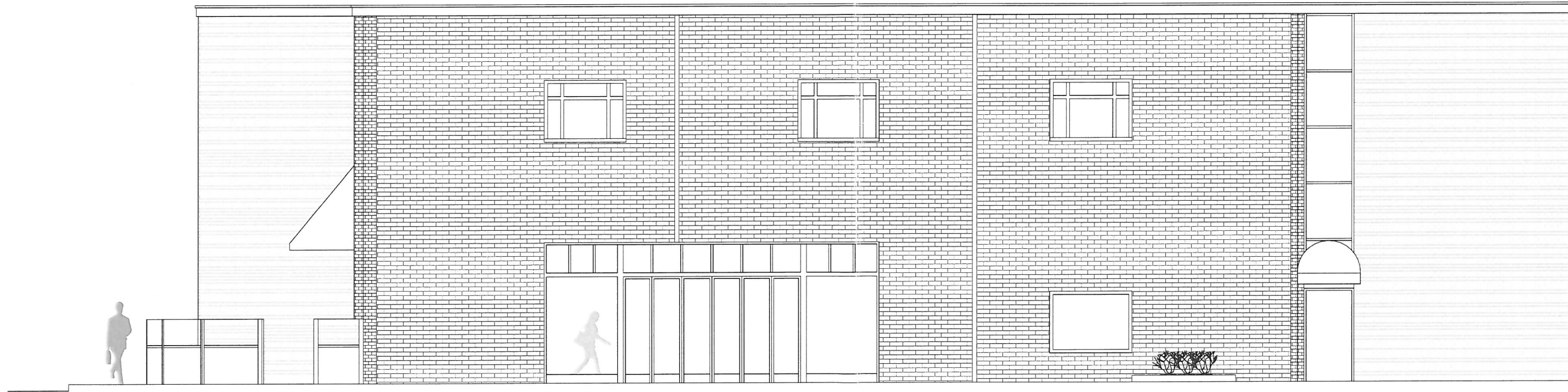
SCALE: AS NOTED

©2009 Sumner Davis Architects Inc. All rights reserved. Information, material, and designs in this document are proprietary to and owned by Sumner Davis Architects Inc. and may not be disclosed to any third party, reproduced, posted on a global computer information network, or distributed in any way without the written consent from Sumner Davis Architects Inc.

A1.01

SHEET NUMBER

103 Congress Street
Portsmouth, NH 03801



VAUGHAN MALL ELEVATION
SCALE: NTS

INFORMATION

Issue Date: JUNE 2009
Drawn By: ETNM
Checked By: WKD
Project Number: -

Revision:

- 1.
- 2.
- 3.
- 4.

TITLE

PROPOSED
ELEVATION

SCALE: AS NOTED

©2009 Sumner Davis Architects Inc. All rights reserved. Information, material, and designs in this document are proprietary to and owned by Sumner Davis Architects Inc. and may not be disclosed to any third party, reproduced, posted on a global computer information network, or distributed in any way without the written consent from Sumner Davis Architects Inc.

A2.01

SHEET NUMBER