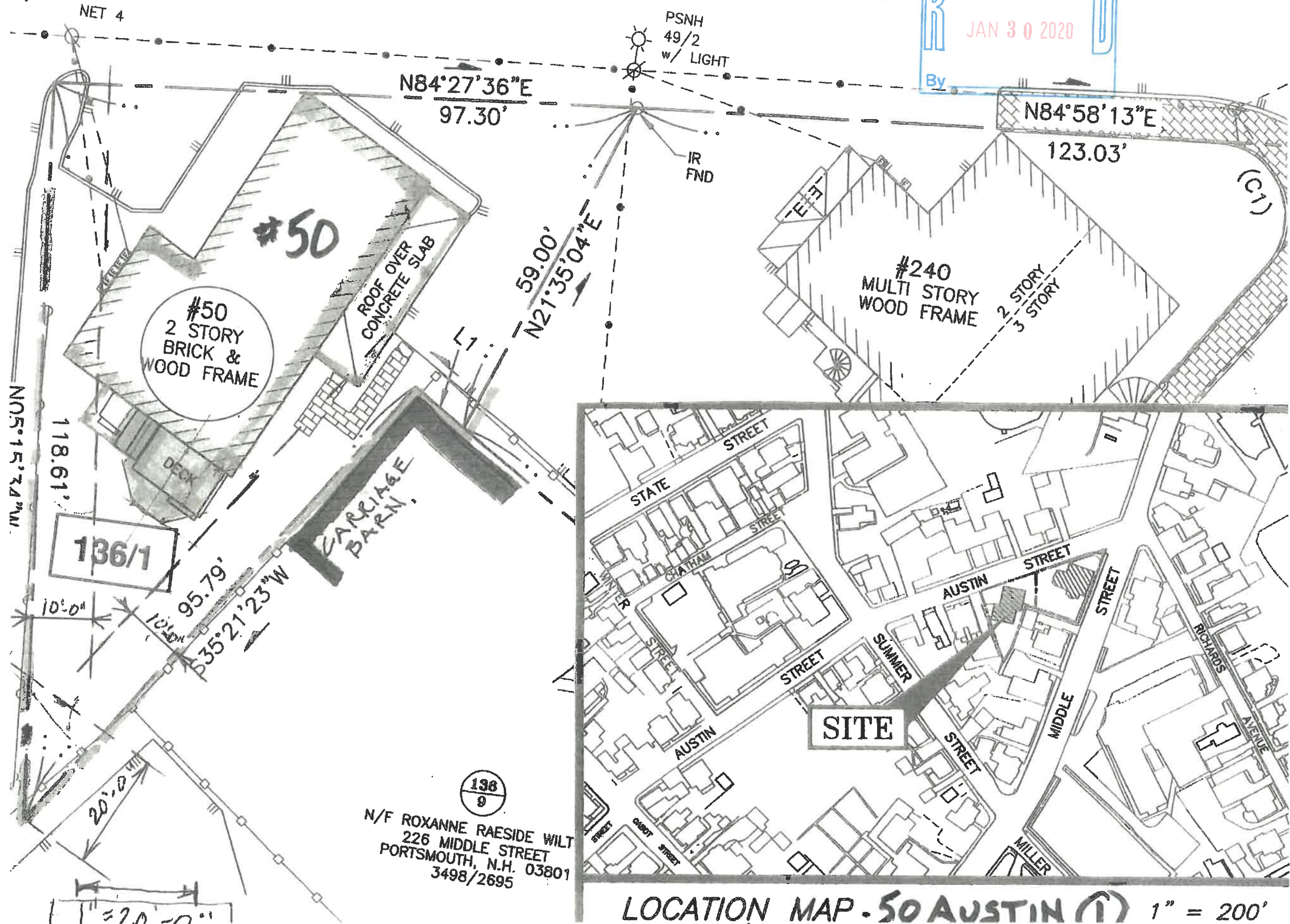


AUSTIN

STREET

RECEIVED
JAN 30 2020
By

6247



SECTION 10.520 Residential and Mixed Residential Districts

10.521 Table of Dimensional Standards – Residential and Mixed Residential Districts

	R	SRA	SRB	GRA	GRB	GRC	GA/MH	MRO	MRB	50 AUSTIN
Minimum Lot Dimensions										
Lot area	5 acres	1 acre	15,000 sf	7,500 sf	5,000 sf	3,500 sf ✓	5 acres	7,500 sf	7,500 sf	6297sf 6297
Lot area per dwelling unit	5 acres	1 acre	15,000 sf	7,500 sf	5,000 sf	3,500 sf ✗	10,000 sf	7,500 sf	7,500 sf	
Continuous street frontage	NA	150'	100'	100'	80'	70' ✓	N/A	100'	100'	97.30'
Depth	NA	200'	100'	70'	60'	50' ✓	N/A	80'	80'	118' varies
Minimum Yard Dimensions										
Front	50'	30'	30' ¹	15'	5'	5' ✗	30' ¹	5'	5' ¹	Coverage exist - Bldg. 1164 sq ft - 524 1448
Side	20'	20'	10'	10'	10'	10' ✗	25'	10'	10'	
Rear	40'	40'	30'	20'	25'	20' ✓	25'	15'	15'	
Maximum Structure Dimensions										
Structure height	35'	35'	35'	35'	35'	35' ² ✓	35' ²	40'	40'	Addition - 244
Roof appurtenance height	8'	8'	8'	8'	8'	8' ✓	8'	10'	10'	
Building coverage	5%	10%	20%	25%	30%	35% ✓	20%	40%	40%	27%
Minimum open space	75%	50%	40%	30%	25%	20% ✓	50%	25%	25%	45524

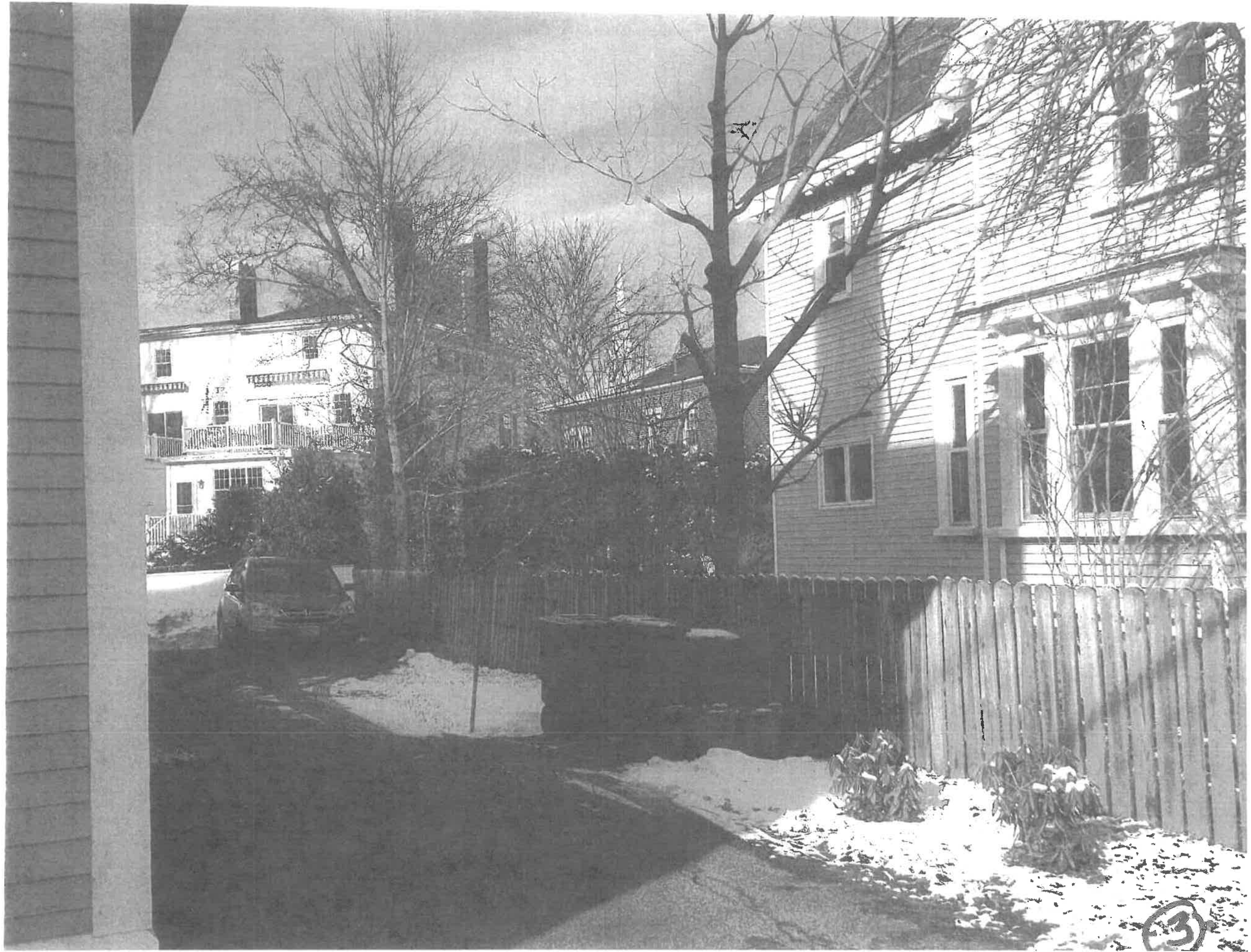
Notes:

NA = Not Applicable NR = No Requirement

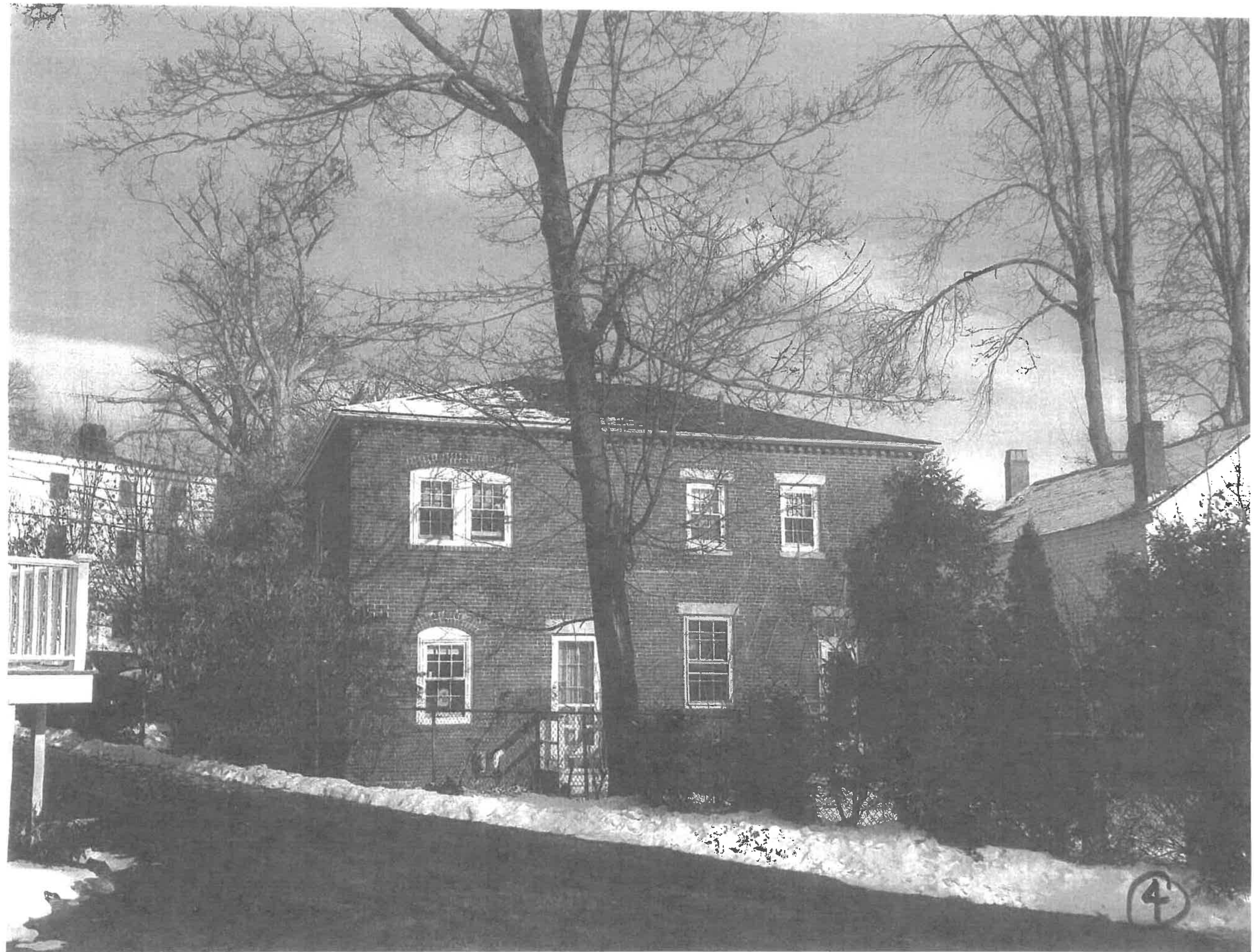
- See Section 10.533 for special requirements on Lafayette Road.
- Within the General Residence C and Garden Apartment/Mobile Home Park districts an additional 8' of height may be added to the maximum structure height in order to provide for multifamily dwellings that include vehicular parking spaces located within the residential building itself, if the additional height results in increased open space when compared to a site plan showing what open spaces would remain if required parking spaces were located in the open and in accessory structures.

10.516.40





3

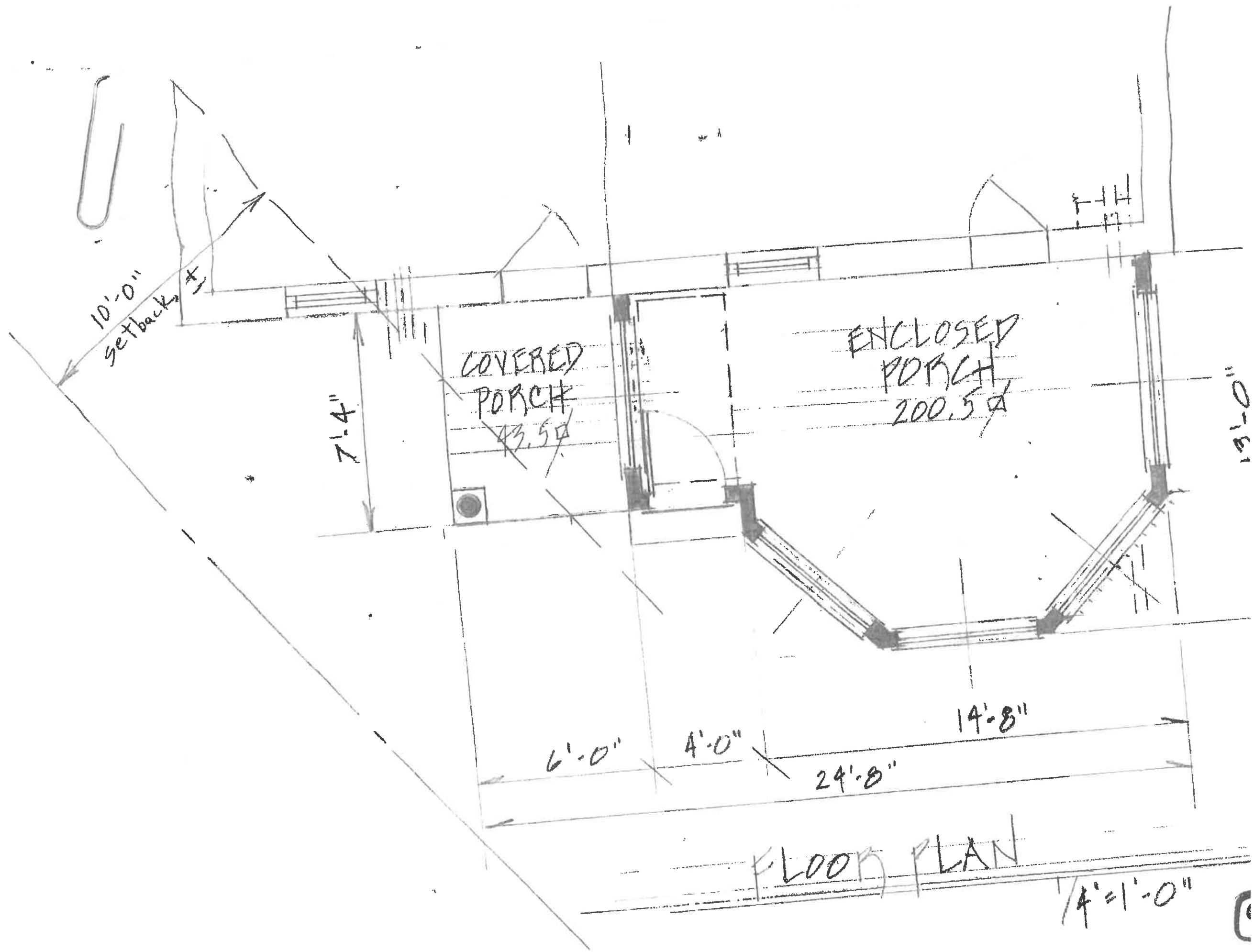


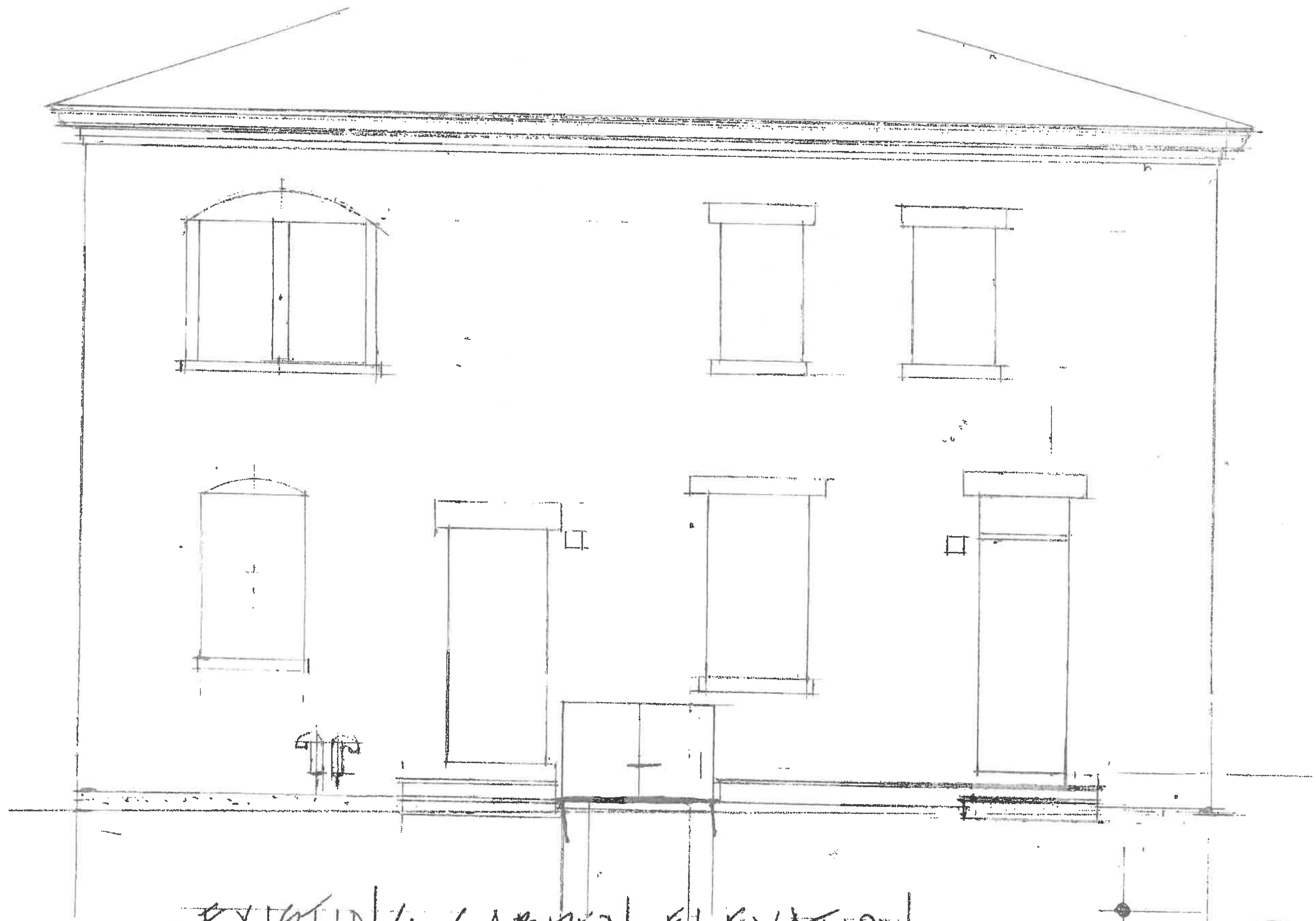






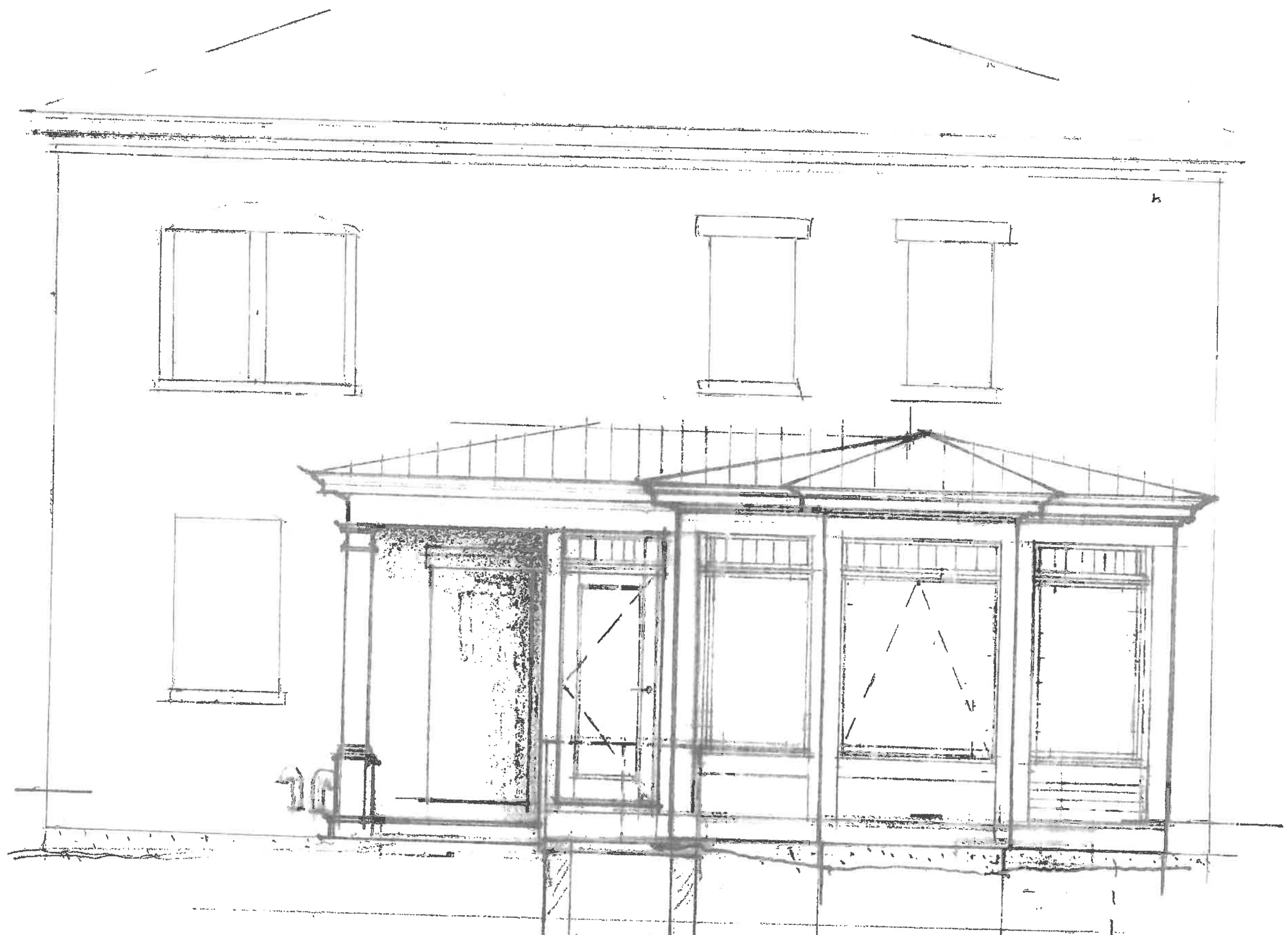






EXISTING GARDEN ELEVATION - 1/8" = 1'-0"

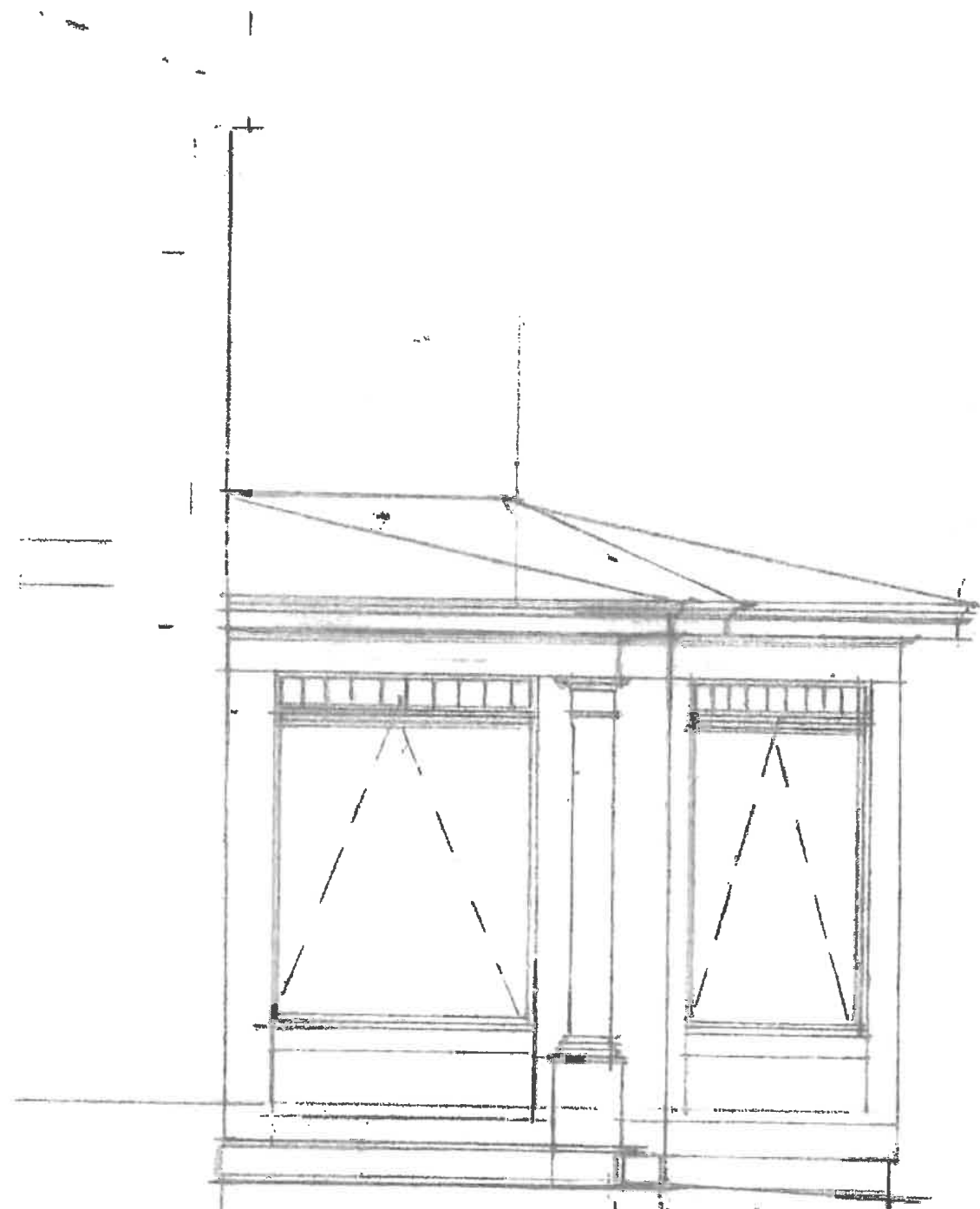
(10)



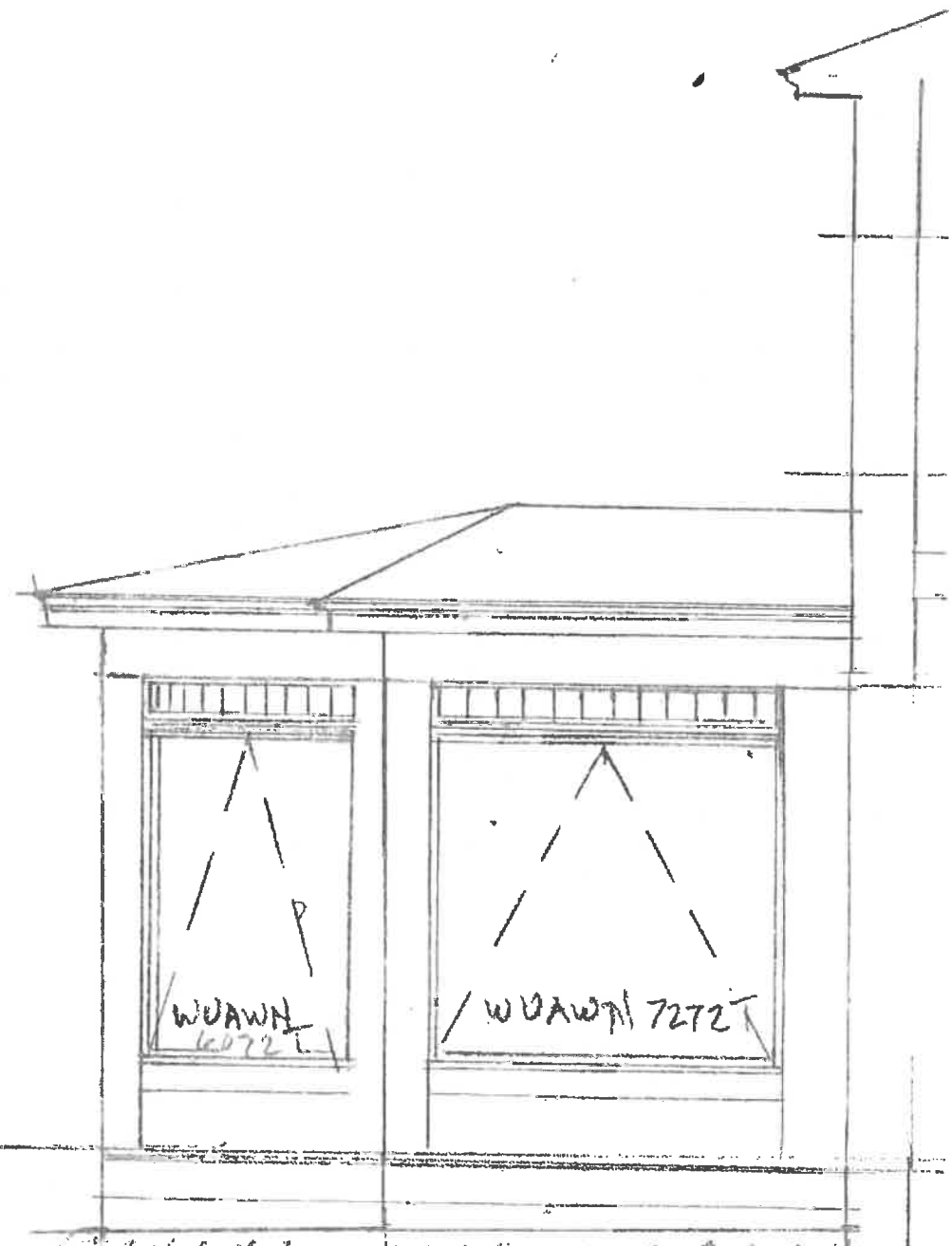
GARDEN ELEVATION

1/11/11

(11)



L. SIDE ELEVATION



R. SIDE ELEVATION

1/4" = 1'-0"

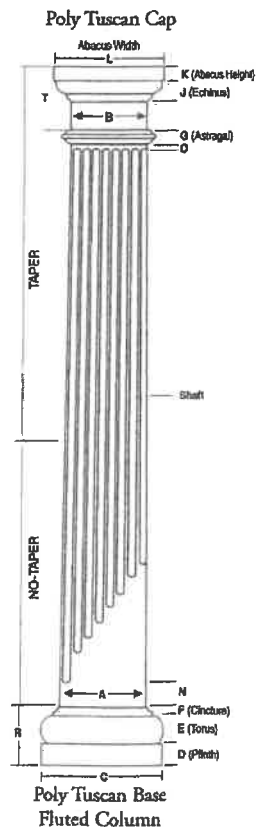
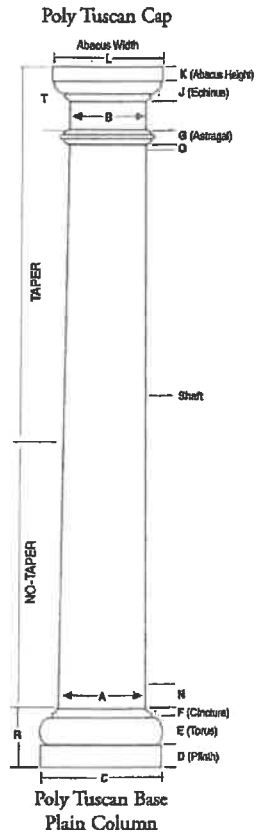
(12)

Round Tapered PERMACast® Columns

COL. SIZE	A	B	C	D	E	F	G	J	K	L	O	N	R	T	LENGTHS AVAIL. (ft.)
6"	5 3/4"	4 1/4"	9"	1 1/4"	1 1/4"	3/4"	3/4"	1 1/4"	1 3/4"	8"	1"	6 1/4"	3 3/4"	4 1/4"	4, 6, 8
8"	7 1/4"	6 1/4"	10 1/2"	1 3/4"	1 3/4"	3/4"	3/4"	1 1/4"	1 3/4"	9 1/4"	1 1/2"	2 1/4"	4 1/4"	4 1/4"	5, 6, 8, 10, 12
10"	9 1/4"	8 1/4"	13 1/2"	2"	2 1/4"	3/4"	3/4"	1 1/4"	1 3/4"	11 1/4"	1 3/4"	2 1/4"	5 1/4"	5"	6, 8, 10, 12, 14, 16, 18, 20, 22, 24, 26, 28, 30
12"	11 1/4"	9 3/4"	16 1/2"	2 1/4"	2 3/4"	3/4"	3/4"	1 1/4"	2 1/4"	13 3/4"	1 3/4"	2 1/4"	6 1/4"	5 1/4"	8, 10, 12, 14, 16, 18, 20, 22, 24, 26, 28, 30
14"	13 1/4"	11 1/4"	19 1/2"	3"	3 1/4"	1 1/4"	1"	2"	2 1/4"	17"	3/4"	2 1/4"	7 1/4"	7"	10, 12, 14, 16, 18, 20, 22, 24, 26, 28, 30
16"	15 1/4"	13 1/4"	22"	3 1/4"	3 3/4"	1 1/4"	1 1/4"	2 1/4"	2 1/4"	19 1/4"	1"	3"	8 1/4"	8"	10, 12, 14, 16, 18, 20, 22, 24, 26, 28, 30
18"	17 1/4"	15 1/4"	24 1/2"	4"	4"	1 1/4"	1 1/4"	2 1/4"	3 1/4"	22 1/4"	1 1/2"	10 1/4"	9 1/4"	8 1/4"	10, 12, 14, 16, 18, 20, 22, 24, 26, 28, 30
20"	19 1/4"	17 1/4"	27"	4 1/4"	4 1/2"	2"	1 1/4"	2 1/4"	3 1/4"	24 1/4"	1 1/2"	10 3/4"	11 1/4"	9"	10, 12, 14, 16, 18, 20, 22, 24, 26, 28, 30
22"	21 1/4"	19 1/4"	30 1/4"	5"	5"	2"	1 1/4"	3"	3 1/4"	27 1/4"	1 1/2"	10 3/4"	12"	10 1/4"	10, 12, 14, 16, 18, 20, 22, 24, 26, 28, 30
24"	23 1/4"	21 1/4"	33 1/4"	6"	5 1/4"	2 1/4"	2"	3 1/4"	4"	30 1/4"	1 1/2"	10 3/4"	13 1/4"	11 1/4"	10, 12, 14, 16, 18, 20, 22, 24, 26, 28, 30
28"	28"	24 1/4"	38"	6 1/4"	6 1/4"	2 3/4"	2 1/4"	3 1/4"	4 1/4"	33 1/4"	1 1/2"	10 3/4"	15 1/4"	11 1/4"	10, 12, 14, 16, 18, 20, 22, 24, 26, 28, 30
30"	29 1/4"	26 1/4"	41 1/4"	6 1/4"	5 3/4"	2 1/2"	3"	4"	4 1/4"	38 1/4"	1 1/2"	10 3/4"	14 1/4"	14 1/4"	10, 12, 14, 16, 18, 20, 22, 24, 26, 28, 30

*There may be a variance of up to 1/4" in all dimensions. Fluted columns available in all diameters. See page 16 for Parallel dimensions. See page 18 for Decorative Capital dimensions. □ Standard Fluted Column (Fluted in mold)

• Split columns are not load bearing.



COLUMN-LOC®

Column-Loc® creates a continuous connection from floor to beam/header without the expense of splitting and reattaching the column. This labor saving product is easy to install and delivers wind uplift resistance especially important in coastal and high wind areas. Currently available for 8" and 10" round (tapered and no-taper) and square PermaCast® columns. Kits are available with and without threaded rod in lengths up to 12'*

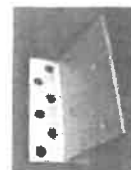


PLUMB-FIT®

To make installation even easier our 6"-12" round and square poly Tuscan Cap and Base Sets with flashing cap come with the Plumb-Fit® patented (Patent 9689674) installation system included.

ROUND PERMACAST® PORCH INSTALLATION BRACKET

The HB&G Porch Installation Bracket includes the bracket and all required hardware. The bracket fits 20" - 30" Plain Round PermaCast® Columns and will secure a 2nd story porch to our PermaCast® Columns. Three brackets are required for each column.



ROUND PERMACAST® INSIDE DIMENSIONS

Inside dimension may vary up to 1/8". Splitting a column will decrease inside dimension 1/8".



COLUMN SIZE	TOP I.D.	BOT I.D.
6"	3 3/4"	4 1/4"
8"	5 1/2"	6 1/4"
10"	7 1/4"	8 1/4"
12"	8 3/4"	10 1/4"
14"	10 1/4"	12 1/4"
16"	12 1/4"	15"
18"	14 1/4"	16 1/4"
20"	16 1/4"	18 1/4"
22"	18 1/4"	20 1/4"
24"	20"	22 1/4"
28"	22 1/4"	26 1/4"
30"	25 1/4"	28 1/4"

*Plain columns only

Marvin

CLAD ULTIMATE PUSH OUT AWNING

CONSTRUCTION DETAILS

