



Greenleaf Woods Condominium

3 Greenleaf Woods Dr, Portsmouth, NH 03801

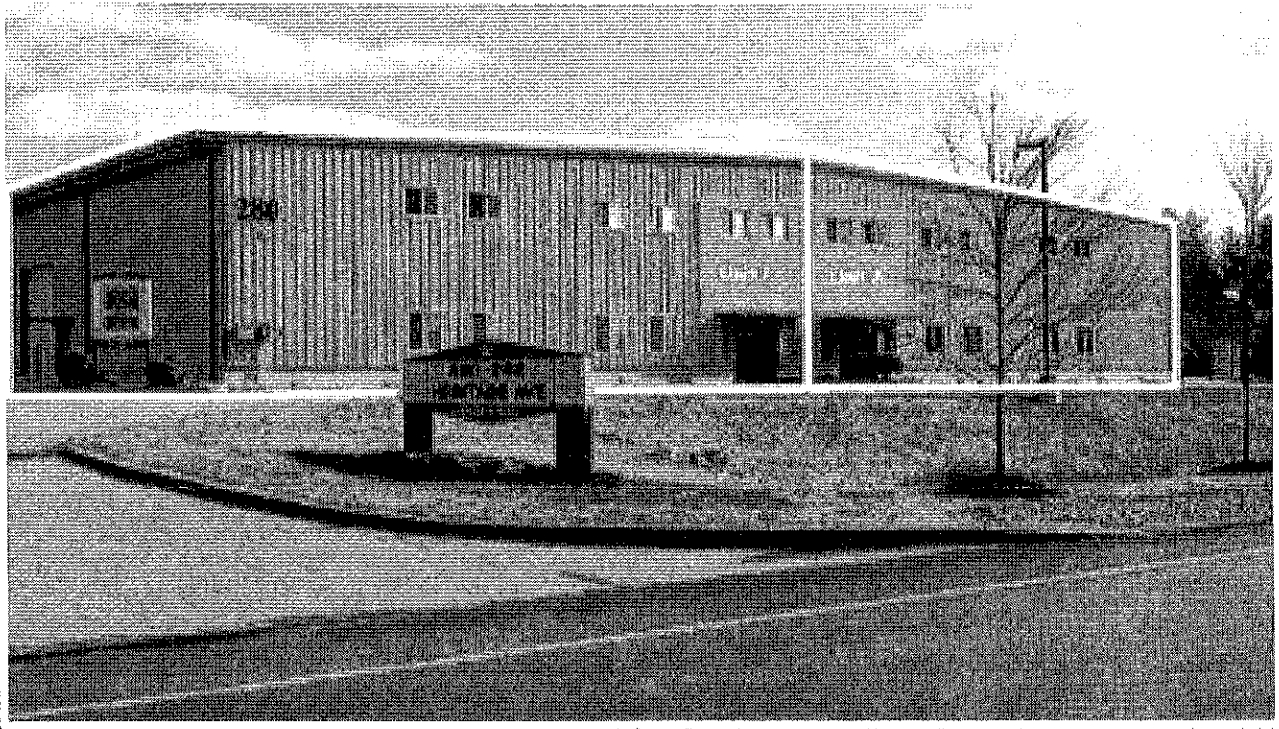
One office condo for sale or lease at Greenleaf Woods Condominiums. Building 3, Unit 102 is 720+/- square feet on the lower level consisting of ...

Andy Fleisher, CCIM – NAI Norwood Group

| | |
|----------|----------|
| Price: | \$59,000 |
| Size: | 720 SF |
| Zoning: | GATEWAY |
| Ceiling: | 8 ft. |

Office

Business Park, Office Building



280 Heritage Avenue

280 Heritage Ave, Portsmouth, NH 03801

FOR SALE - excellent investment opportunity at 280 Heritage Avenue in Portsmouth, NH. The property entails two fully leased industrial/flex condos ...

Christopher Healey – CB Richard Ellis/New England

| | |
|----------|--------------|
| Price: | See Agent |
| Size: | 5,100 SF |
| Zoning: | INDUSTRIAL |
| Ceiling: | 24 ft. Clear |
| Loading: | 1 Door |

Industrial

Flex Space, Light Industrial



Successful Hair Studio/Retail Condo Available For Sale

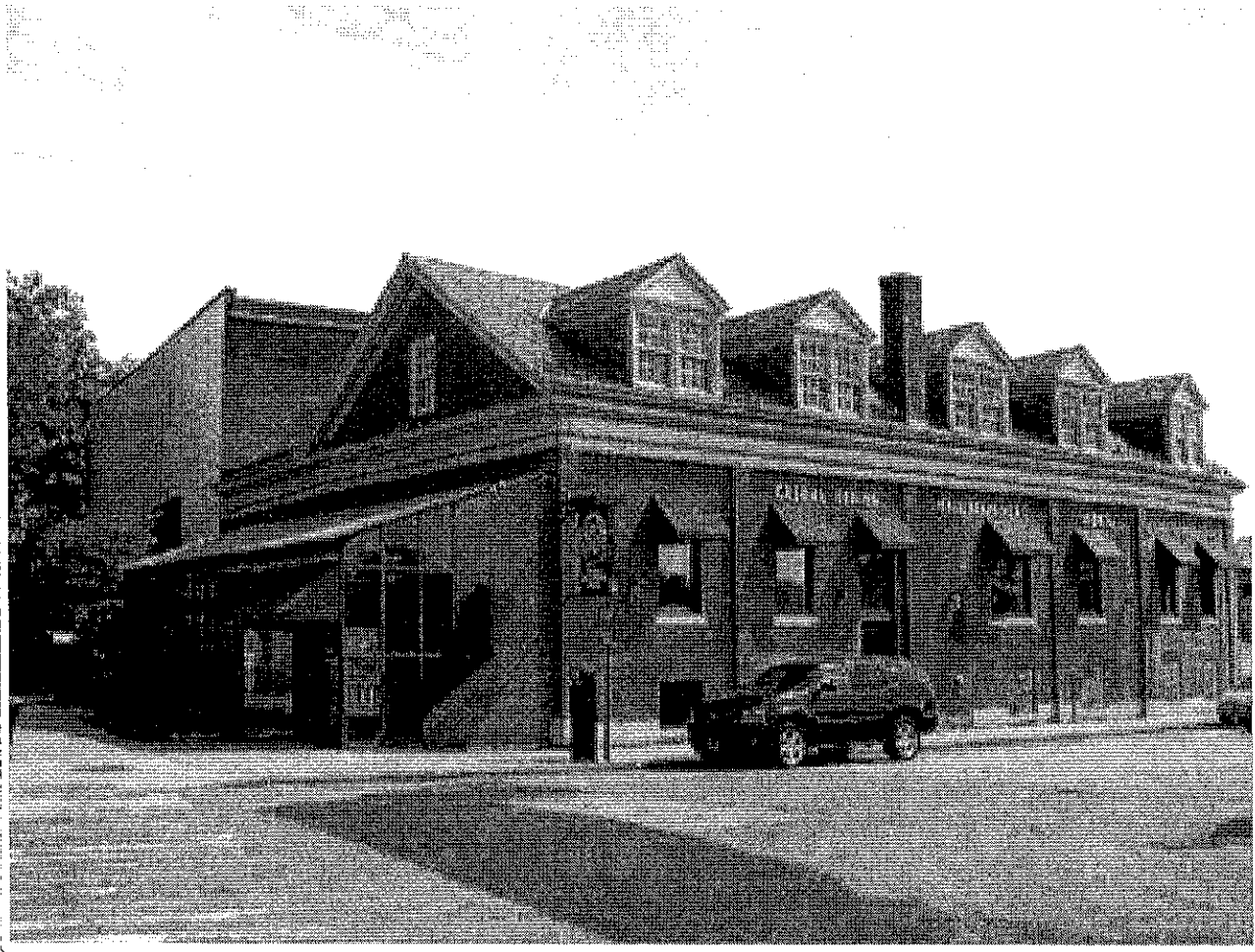
2425 Lafayette Rd, Portsmouth, NH 03801

Successful hair salon and retail condo is now available for sale. This offering includes the retail condo and all of the furniture and fixtures of ...

Margaret O'Brien – Margaret O'Brien Realty

| | |
|----------|-----------|
| Price : | \$139,900 |
| Size : | 726 SF |
| Zoning : | RETAIL |

Retail-Commercial
Other



14,000+/- SF Mixed Use Building

172 Hanover St, Portsmouth, NH 03801

Price Improved! Downtown Portsmouth, NH - Mixed Use Building - For Sale or Lease or Joint Venture! The Free Standing Building [approx 14,000 sf ...

Fred Attalla – Weichert Realtors, Points East - Yankee Trader

| | |
|------------|-------------|
| Price: | \$2,795,000 |
| Size: | 14,000 SF |
| Land Size: | 0.13 Acres |
| Zoning: | CBB |

Retail-Commercial

Free-Standing Building, Mixed Use



Stand-Alone Office Building - Pease Tradeport

73 Corporate Drive, Portsmouth, NH 03801

This 12,390 +/- SF building is on two levels of 6,150 +/- SF with the second floor accessible by an elevator and two stairwells. The building is ...

Christian Stallkamp – CBRE | Portsmouth

| | |
|---------|---------------------|
| Price: | \$1,499,000 |
| Size: | 12,390 SF |
| Zoning: | BUSINESS/COMMERCIAL |

Office
Office Building



1150 Sagamore Avenue - Wentworth Mobil Assemblage

1150 Sagamore Avenue, Portsmouth, NH 03801

This property is an assemblage of two tax parcels, including the parcel that the original Wentworth Mobil Station sits on, as well as a parcel that ...

Chris McInnis – Nautilus Realty Group

| | |
|------------|-------------|
| Price: | \$1,050,000 |
| Size: | 1,600 SF |
| Land Size: | 0.84 Acres |
| Zoning: | MRB |

Retail-Commercial
Convenience Store, Service Station/Gas Station



12 Unit Mixed Use Investment

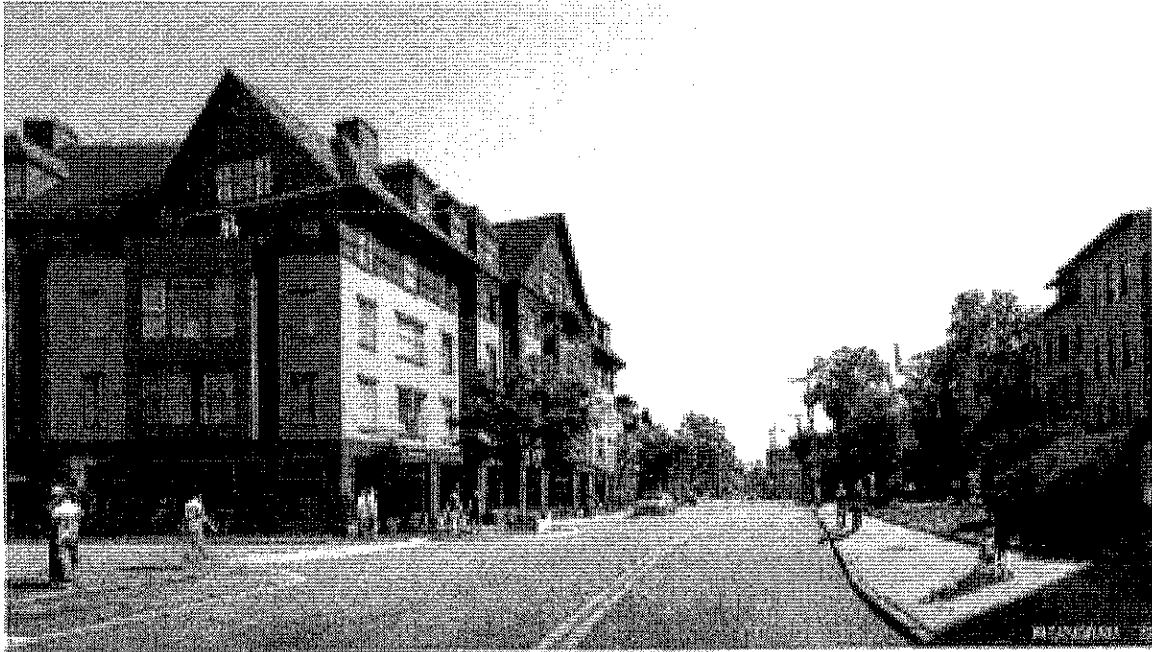
189, 191, 195 State St & 12 Penhallow St, Portsmouth, NH 03801

Twelve (12) unit mixed use brick building with frontage on State Street and Penhallow, two major downtown arteries. A very rare offering in downtown ...

Janet Faulkner – KW Commercial

| | |
|---------|-------------|
| Price: | \$2,500,000 |
| Size: | 8,500 SF |
| Zoning: | CBB |
| Units: | 12 |

Multi-Family
Low-Rise/Garden



Downtown Portsmouth, 51 Islington Street

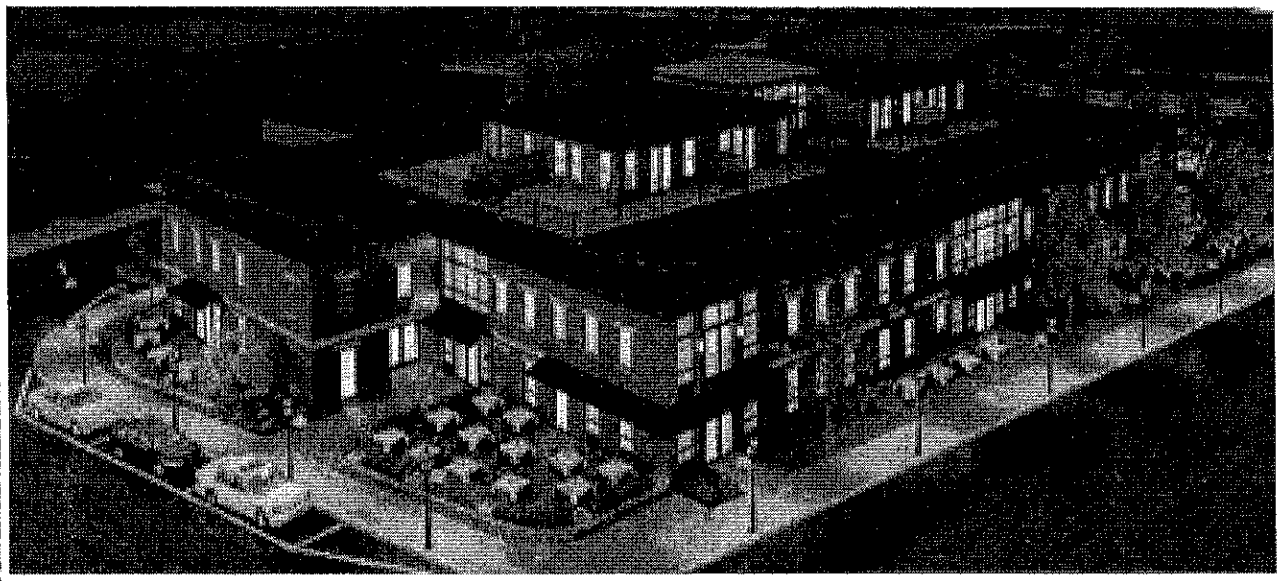
51 Islington Street, Portsmouth, NH 03801

FOR SALE OR LEASE 1,325 SF & 1,135 SF of build-to-suit first floor office/retail space is available. This newly constructed residential/commercial ...

Jody A. Skaff – The Kane Company, Inc.

| | |
|---------|-----------|
| Price: | \$280 PSF |
| Size: | 2,460 SF |
| Zoning: | CBB |

Retail-Commercial
Mixed Use



Downtown Portsmouth, 30 Maplewood Ave

30 Maplewood Ave, Portsmouth, NH 03801

FOR LEASE OR SALE Located at the newly revitalized gateway to historic downtown Portsmouth, this build-to-suit opportunity will give your business ...

Jody A. Skaff – The Kane Company, Inc.

Price: \$325 PSF
Size: 6,000 SF
Zoning: CBB

Retail-Commercial
Other



Carlisle Park Industrial Unit H

280 Heritage Ave, Portsmouth, NH 03801

Industrial Units in Carlisle Park lead the way on the Seacoast of New Hampshire with quality, condition, appeal and utility . 10'X14' overhead ...

David Lefebvre – Berkshire Hathaway Verani Realty-Portsmouth

| | |
|-----------|--------------|
| Price : | \$257,500 |
| Size : | 2,550 SF |
| Zoning : | INDUSTRIAL |
| Ceiling : | 22 ft. Clear |

Industrial

Flex Space, Industrial-Business Park



Carlisle Park Unit F

280 Heritage Ave, Portsmouth, NH 03801

Carlisle Park, situated in the Portsmouth Industrial Park, has probably the best quality of construction of industrial condominium units on the ...

David Lefebvre – Berkshire Hathaway Verani Realty-Portsmouth

| | |
|------------|----------------|
| Price: | \$575,000 |
| Size: | 5,100 SF |
| Land Size: | 4.93 Acres |
| Zoning: | INDUSTRIA |
| Ceiling: | 22 ft. Clear |
| Loading: | 1 Dock, 1 Door |

Industrial

Flex Space, Industrial-Business Park





Sports Medicine & Atlantic Orthopaedics Property for Sale

150 US Route 1 Bypass, Portsmouth, NH 03801

Colliers International is pleased to introduce the availability of a medical office building at 150 US Route 1 Bypass in Portsmouth, New Hampshire. ...

Andrew M. Ward – Colliers International | New Hampshire

| | |
|------------|--------------------|
| Price: | \$2,000,000 |
| Size: | 10,832 SF |
| Land Size: | 2.99 Acres |
| Zoning: | SINGLE RESIDENCE B |

Office
Medical, Office Building





10 Vaughan Mall - Ste 2-17

10 Vaughan Mall - Ste 2-17, Portsmouth, NH 03801

Office condos for sale on the second floor in the Worth Block Building in downtown Portsmouth, NH. All sales are subject to the existing lease terms ...

Kent White – CBRE | Portsmouth

| | |
|---------|-----------|
| Price: | \$116,000 |
| Size: | 700 SF |
| Zoning: | See Agent |

Office
Executive Suites





10 Vaughan Mall - Ste 2-16

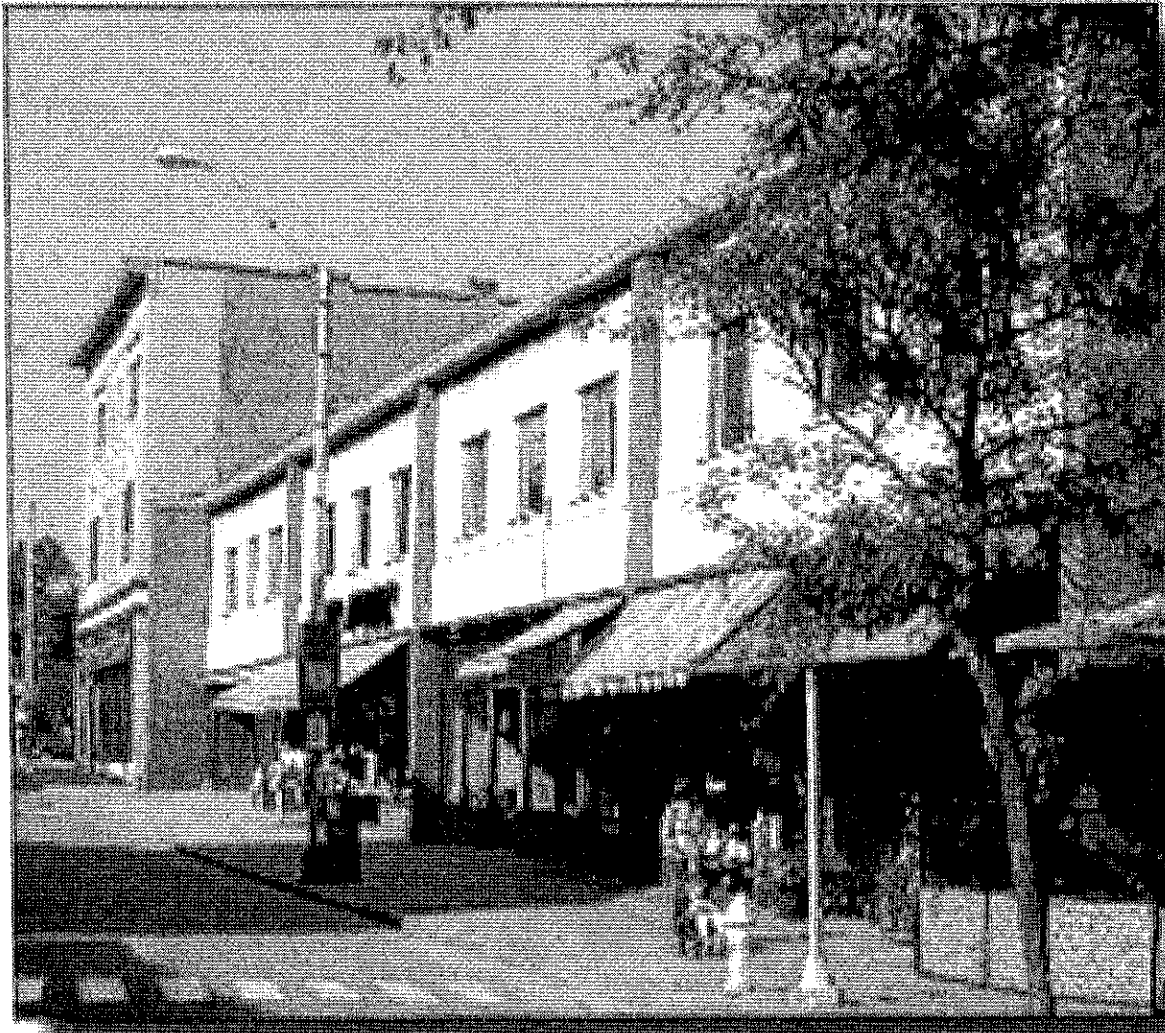
10 Vaughan Mall - Ste 2-16, Portsmouth, NH 03801

Office condos for sale on the second floor in the Worth Block Building in downtown Portsmouth, NH. All sales are subject to the existing lease terms ...

Kent White – CBRE | Portsmouth

| | |
|---------|-----------|
| Price: | \$202,000 |
| Size: | 1,222 SF |
| Zoning: | See Agent |

Office
Executive Suites



10 Vaughan Mall - Ste 2-13

10 Vaughan Mall - Ste 2-13, Portsmouth, NH 03801

Office condos for sale on the second floor in the Worth Block Building in downtown Portsmouth, NH. All sales are subject to the existing lease terms ...

Kent White – CBRE | Portsmouth

| | |
|---------|-----------|
| Price: | \$126,000 |
| Size: | 762 SF |
| Zoning: | See Agent |

Office

Executive Suites





10 Vaughan Mall - Ste 2-12

10 Vaughan Mall - Ste 2-12, Portsmouth, NH 03801

Office condos for sale on the second floor in the Worth Block Building in downtown Portsmouth, NH. All sales are subject to the existing lease terms ...

Kent White – CBRE | Portsmouth

| | |
|---------|-----------|
| Price: | \$40,000 |
| Size: | 235 SF |
| Zoning: | See Agent |

Office
Executive Suites





10 Vaughan Mall - Ste 2-7A

10 Vaughan Mall - Ste 2-7A, Portsmouth, NH 03801

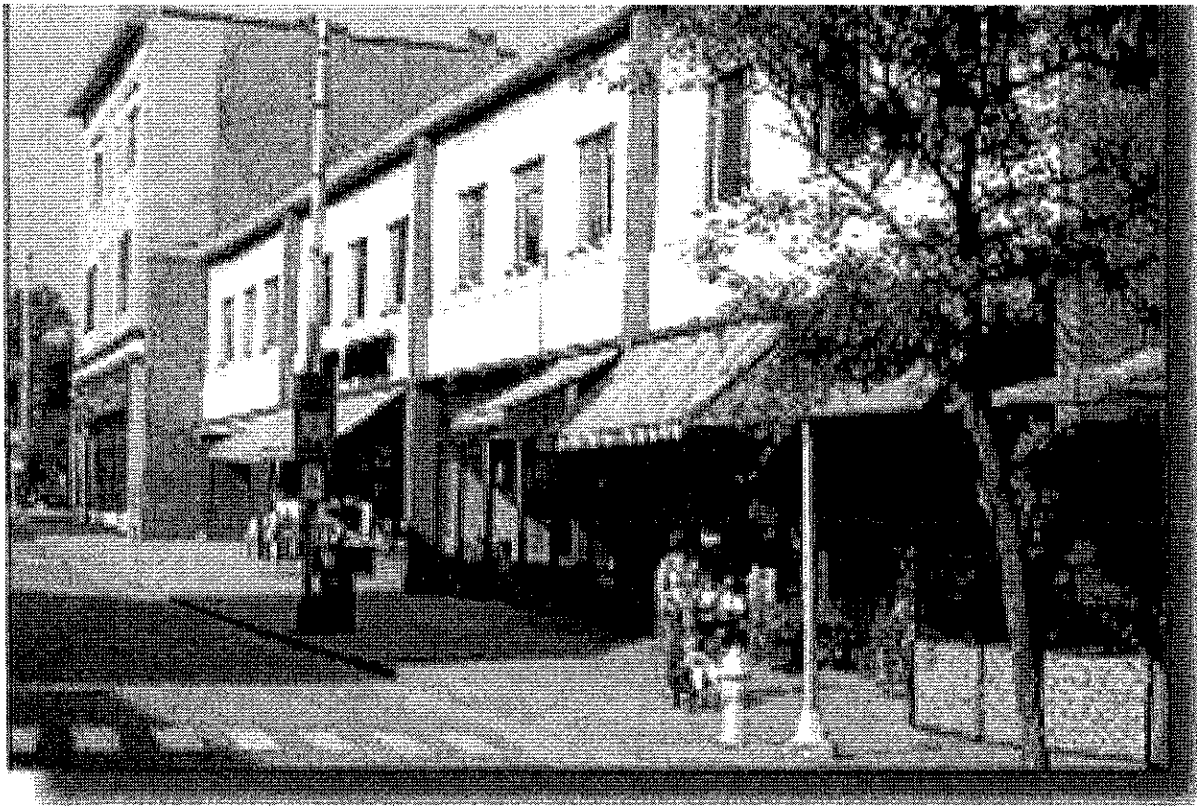
Office condos for sale on the second floor in the Worth Block Building in downtown Portsmouth, NH. All sales are subject to the existing lease terms ...

Kent White – CBRE | Portsmouth

| | |
|---------|-----------|
| Price: | \$78,000 |
| Size: | 472 SF |
| Zoning: | See Agent |

Office
Executive Suites





10 Vaughan Mall - Ste 2-7

10 Vaughan Mall - Ste 2-7, Portsmouth, NH 03801

Office condos for sale on the second floor in the Worth Block Building in downtown Portsmouth, NH. All sales are subject to the existing lease terms ...

Kent White – CBRE | Portsmouth

| | |
|---------|-----------|
| Price: | \$255,000 |
| Size: | 1,546 SF |
| Zoning: | See Agent |

Office
Executive Suites





10 Vaughan Mall - Ste 2-6

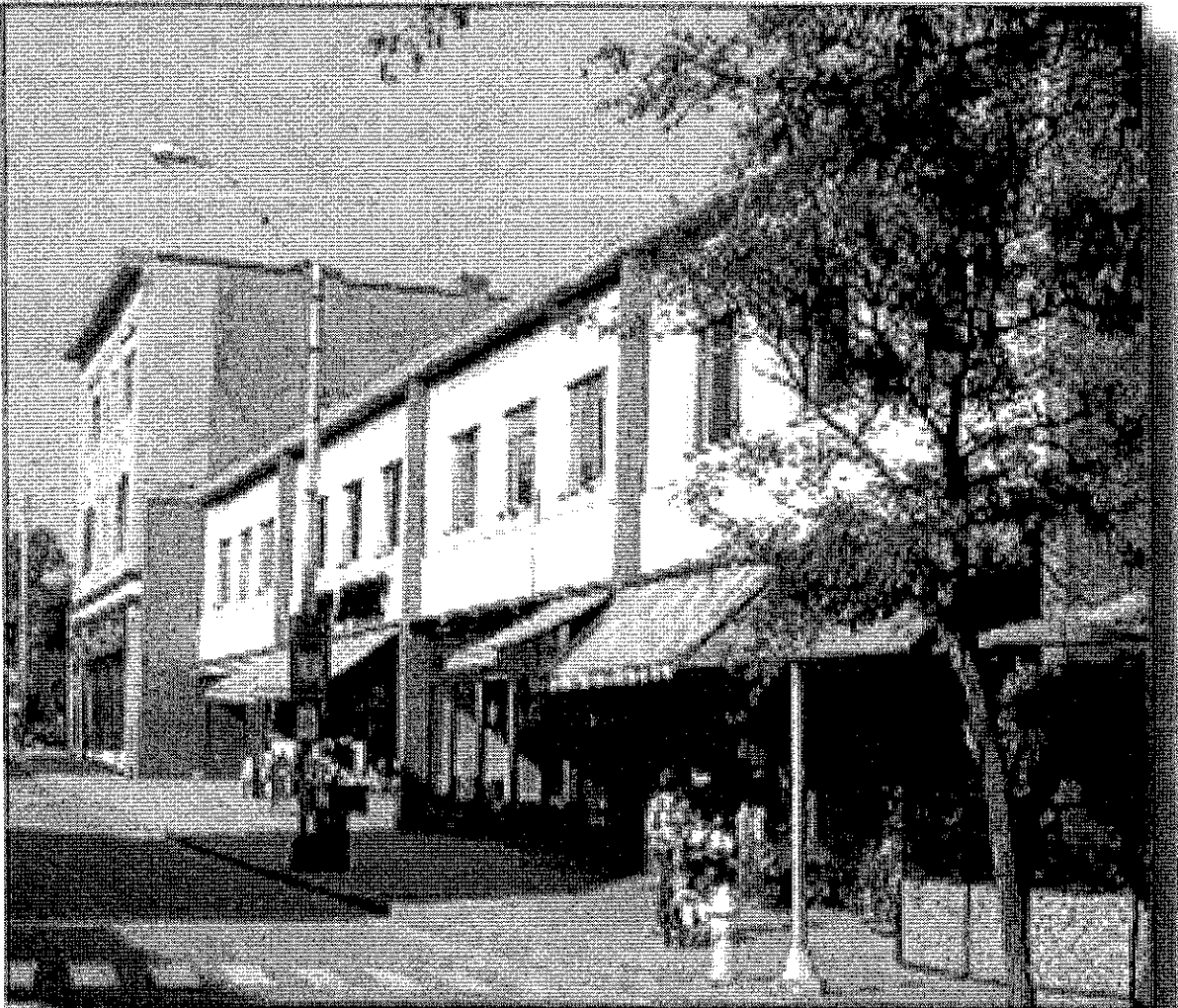
10 Vaughan Mall - Ste 2-6, Portsmouth, NH 03801

Office condos for sale on the second floor in the Worth Block Building in downtown Portsmouth, NH. All sales are subject to the existing lease terms ...

Kent White – CBRE | Portsmouth

| | |
|---------|-----------|
| Price: | \$177,000 |
| Size: | 1,070 SF |
| Zoning: | See Agent |

Office
Executive Suites



10 Vaughan Mall - Ste 2-5

10 Vaughan Mall - Ste 2-5, Portsmouth, NH 03801

Office condos for sale on the second floor in the Worth Block Building in downtown Portsmouth, NH. All sales are subject to the existing lease terms ...

Kent White – CBRE | Portsmouth

| | |
|---------|-----------|
| Price: | \$157,000 |
| Size: | 952 SF |
| Zoning: | See Agent |

Office
Executive Suites





10 Vaughan Mall - Ste 2-11

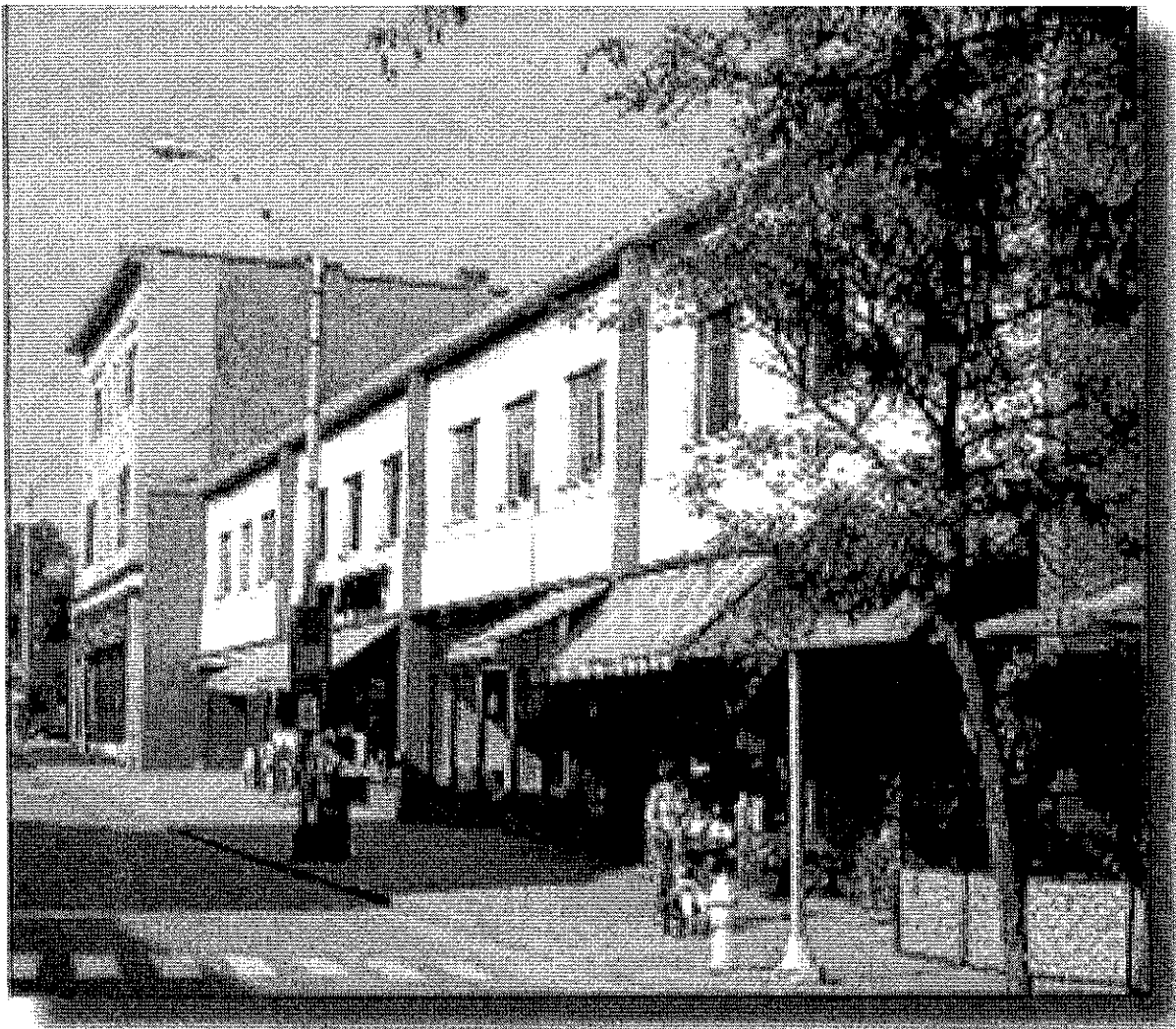
10 Vaughan Mall - Ste 2-11, Portsmouth, NH 03801

Office condos for sale on the second floor in the Worth Block Building in downtown Portsmouth, NH. All sales are subject to the existing lease terms ...

Kent White – CBRE | Portsmouth

| | |
|---------|-----------|
| Price: | \$106,000 |
| Size: | 645 SF |
| Zoning: | See Agent |

Office
Executive Suites



10 Vaughan Mall - Ste 2-4

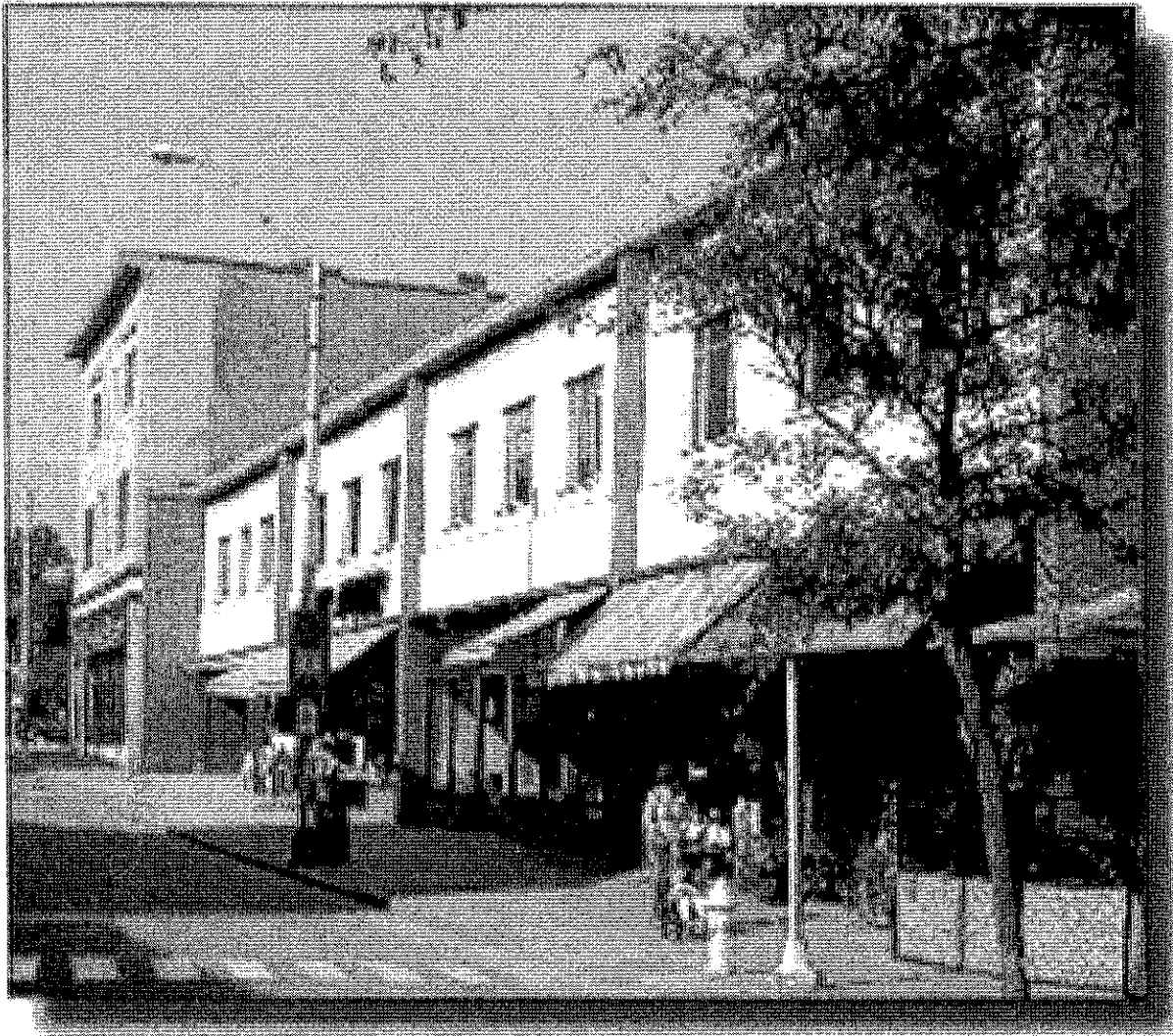
10 Vaughan Mall - Ste 2-4, Portsmouth, NH 03801

Office condos for sale on the second floor in the Worth Block Building in downtown Portsmouth, NH. All sales are subject to the existing lease terms ...

Kent White – CBRE | Portsmouth

| | |
|---------|-----------|
| Price: | \$125,000 |
| Size: | 756 SF |
| Zoning: | See Agent |

Office
Executive Suites



10 Vaughan Mall - Ste 2-3

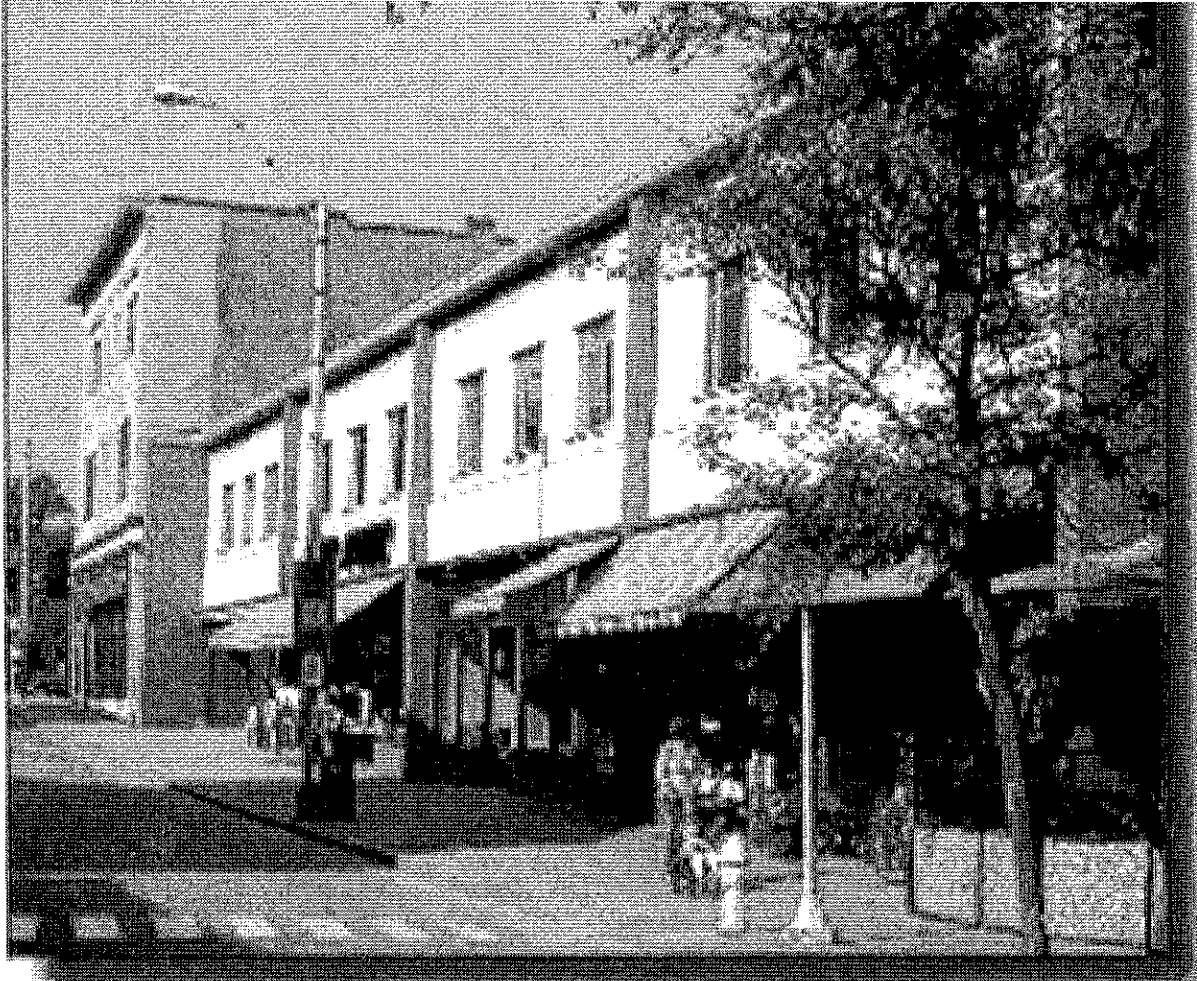
10 Vaughan Mall - Ste 2-3, Portsmouth, NH 03801

Office condos for sale on the second floor in the Worth Block Building in downtown Portsmouth, NH. All sales are subject to the existing lease terms ...

Kent White – CBRE | Portsmouth

| | |
|---------|-----------|
| Price: | \$85,000 |
| Size: | 516 SF |
| Zoning: | See Agent |

Office
Executive Suites



10 Vaughan Mall - Ste 2-1

10 Vaughan Mall - Ste 2-1, Portsmouth, NH 03801

Office condos for sale on the second floor in the Worth Block Building in downtown Portsmouth, NH. All sales are subject to the existing lease terms ...

Kent White – CBRE | Portsmouth

Price: \$125,000

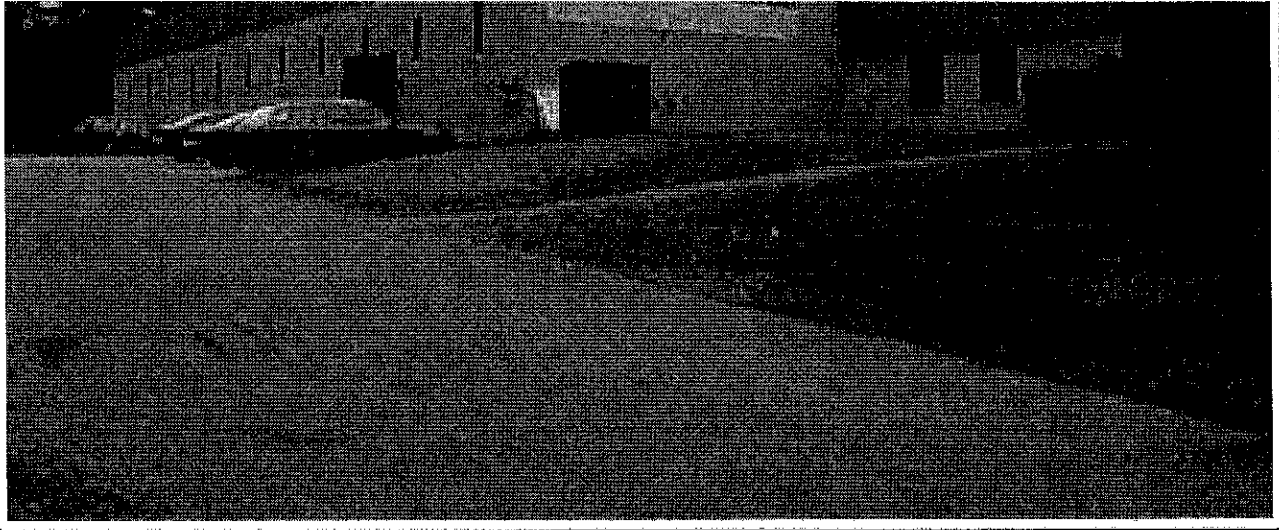
Size: 756 SF

Zoning: CBB

Office

Executive Suites





235 Heritage Avenue

235 Heritage Ave , Portsmouth, NH 03801

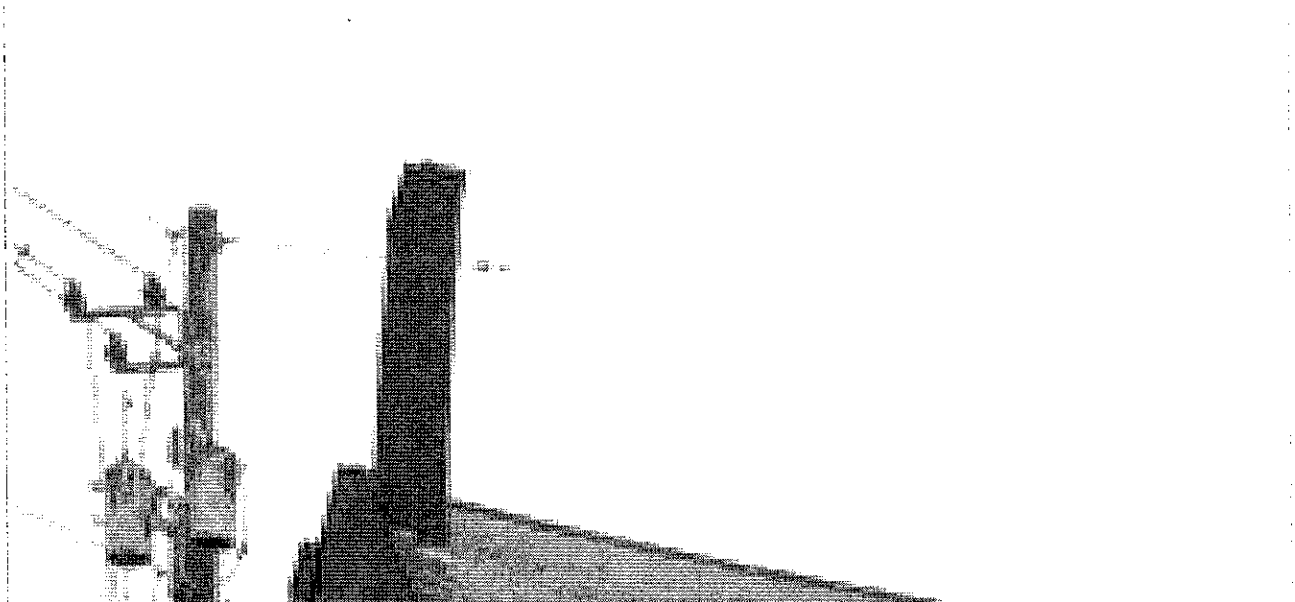
Fully leased single story light industrial building on 4.7 acres available for sale. The original 25,400 SF (16' ceiling) was built in 1978 and is ...

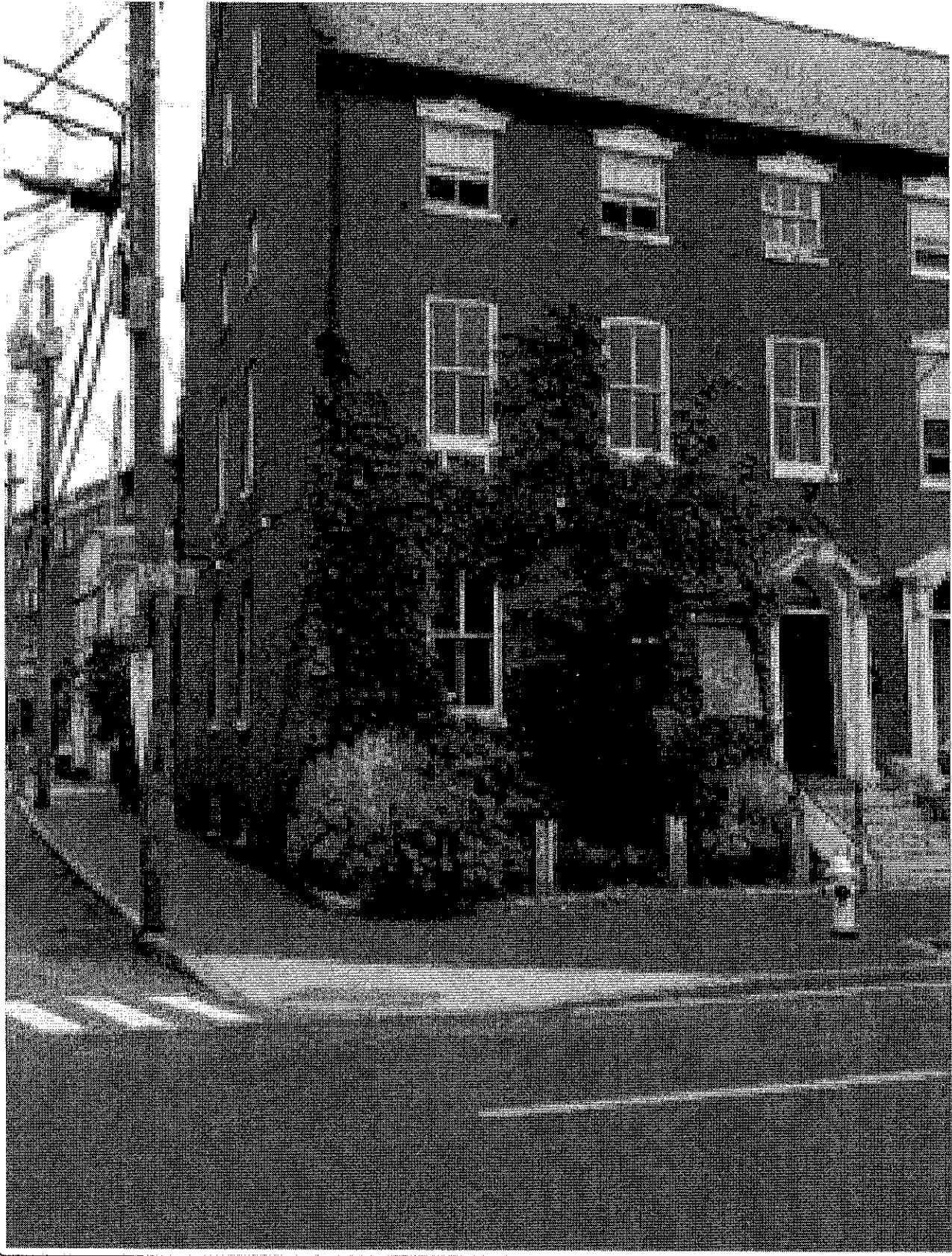
William J. Luers – Tamposi-Nash R E Group Inc

| | |
|------------|-------------|
| Price: | \$4,500,000 |
| Size: | 51,700 SF |
| Land Size: | 4.70 Acres |
| Zoning: | INDUSTRIAL |
| Ceiling: | 20 ft. |
| Loading: | 6 Docks |

Industrial

Manufacturing, Light Industrial





177 State St

177 State St, Portsmouth, NH 03801

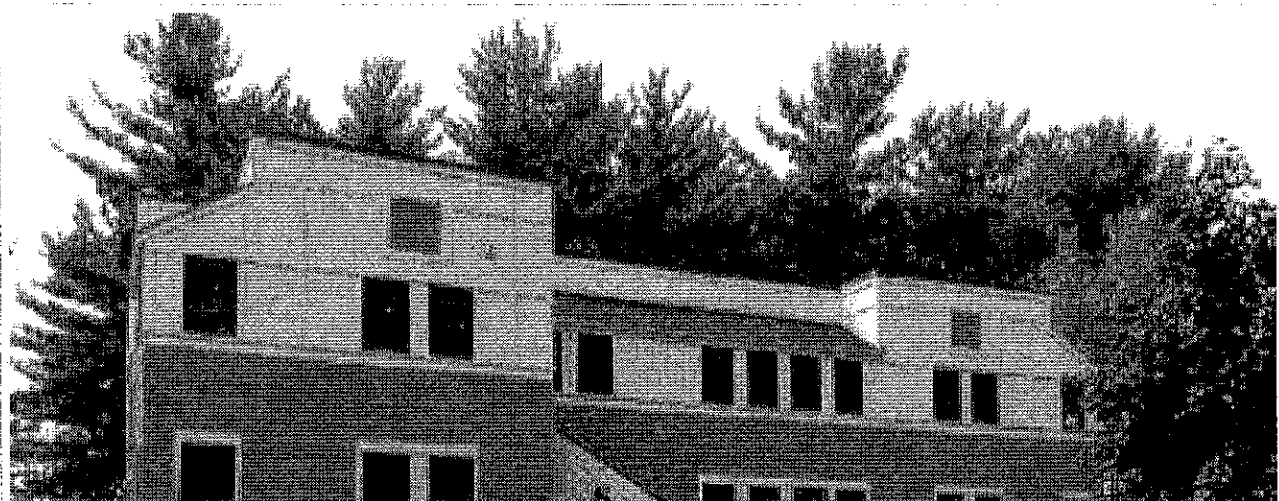
Elegant 1850 4 1/2 story brick multi unit townhouse with lots of possibilities for development. Great location a block

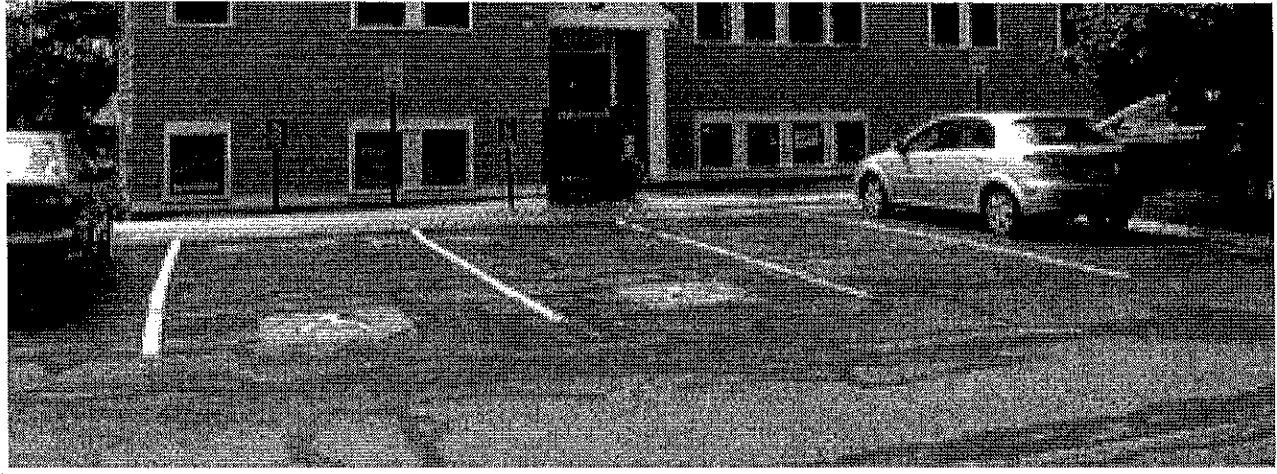
from Market Square and the ...

Bill Mouflouze – Bill Mouflouze Real

Price: \$1,200,000
Size: 6,218 SF
Zoning: CBB
Units: 2

Multi-Family
Duplex/Fourplex, Mixed Use





5 Greenleaf Woods - Office Unit

5 Greenleaf Woods Dr, Portsmouth, NH 03801

Wonderful Condo with immediate cashflow! Tenant in place for one year starting July 1. 3 Large Size Offices with ample windows in each, and a ...

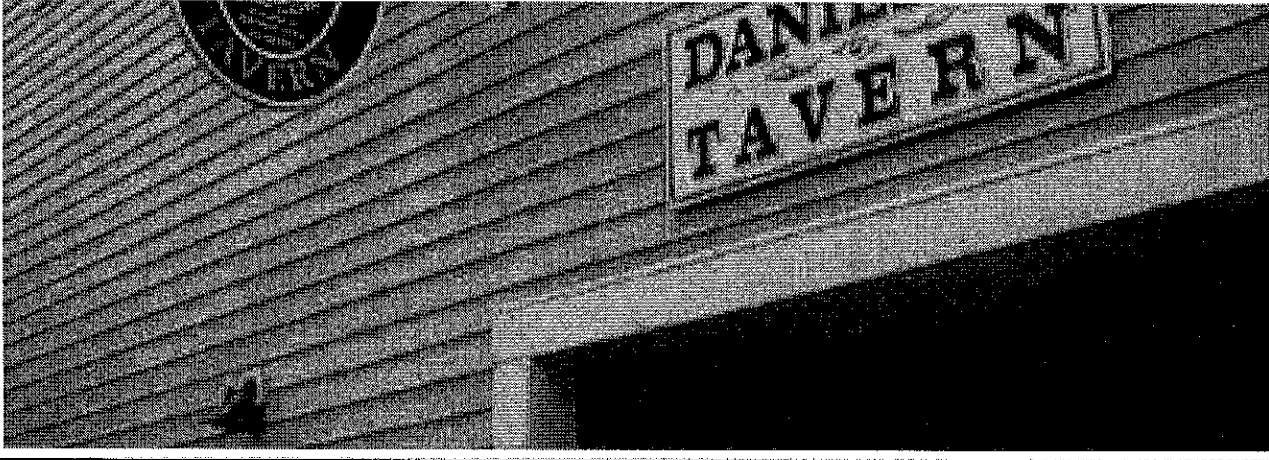
Gerry O'Connell – KW Commercial Coastal Land & Commercial Group (CLCG)

| | |
|----------|------------------|
| Price: | \$69,999 |
| Size: | 720 SF |
| Zoning: | GENERAL BUSINESS |
| Ceiling: | 8 ft. |

Office

Business Park, Office Building





Downtown Portsmouth Tavern

109 Daniel Street, Portsmouth, NH 03801

Rare opportunity to own a well established downtown business. The Daniel Street Tavern is located one block from Market Square and steps to the ...

Bill Mouflouze – Bill Mouflouze Real

Price: \$169,000

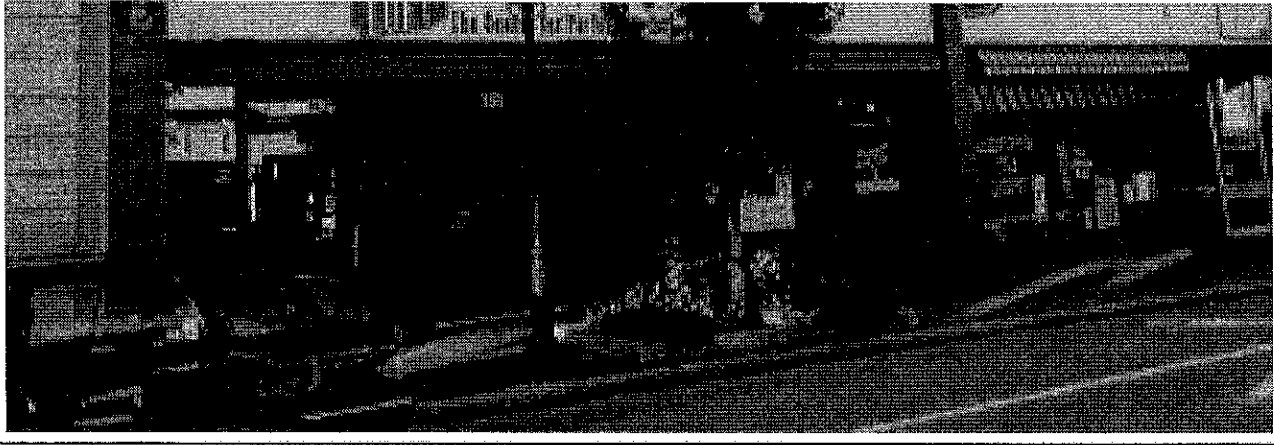
Size: 1,950 SF

Zoning: CBB

Retail-Commercial

Restaurant, Tavern/Bar/Nightclub





Downtown Portsmouth Office!

10 Vaughan Mall, Portsmouth, NH 03801

GREAT PRICE! Below other units in the building! The Worth Block at 10 Vaughan Mall is comfortably located in the heart of downtown Portsmouth, ...

David Lefebvre – Berkshire Hathaway Verani Realty-Portsmouth

| | |
|----------|-----------|
| Price: | \$299,900 |
| Size: | 2,738 SF |
| Zoning: | CBB |
| Ceiling: | 9 ft. |

Office

Mixed Use, Flex Space



Islington Street Redevelopment Opportunity

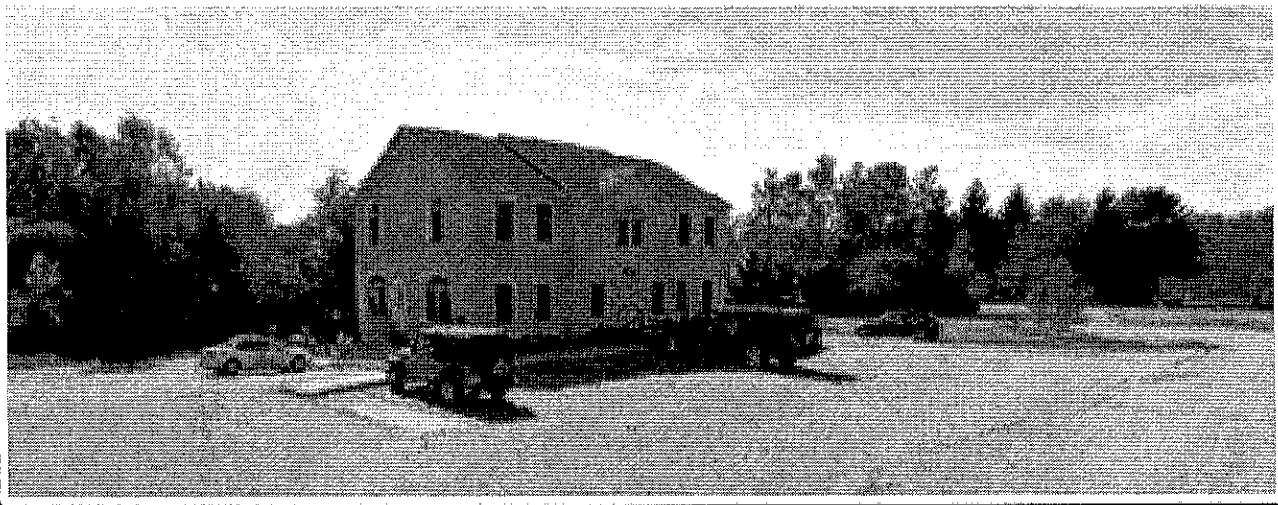
180 Islington St, Portsmouth, NH 03801

Prime redevelopment opportunity located in the Central Business B zone near the center of downtown Portsmouth. Situated on this .091+/- acre parcel ...

Andy Fleisher, CCIM – NAI Norwood Group

| | |
|------------|--------------------|
| Price: | \$565,000 |
| Size: | 4,353 SF |
| Land Size: | 0.09 Acres |
| Zoning: | CENTRAL BUSINESS B |
| Ceiling: | 9 ft. |

Retail-Commercial
Convenience Store, Free-Standing Building



Portsmouth, 3201-3203 Lafayette Road

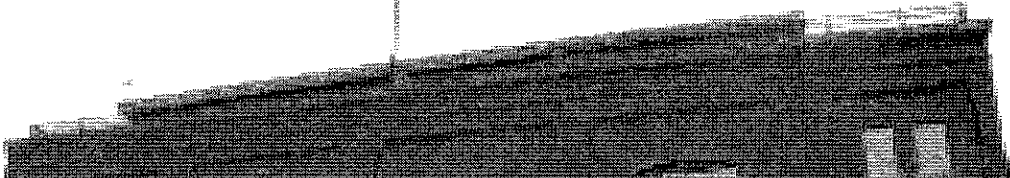
3201-3203 Lafayette Rd, Portsmouth, NH 03801

• Zoned: Commercial • Acres: 6.02 • Frontage: 561.33' • Parking: Paved - Asphalt • Traffic: 17,000 VPD • Utilities City water/sewer Asking Price: ...

Jean M. Kane – The Kane Company, Inc.

| | |
|------------|-------------|
| Price: | \$2,000,000 |
| Land Size: | 6.02 Acres |
| Zoning: | COMMERCIAL |

Vacant Land
Other





121 Bow Street Unit C1

121 Bow St, Portsmouth, NH 03801

What a location for your business! Distinctive, water-side office condo located in the historic, waterfront Bow Street neighborhood in the heart of ...

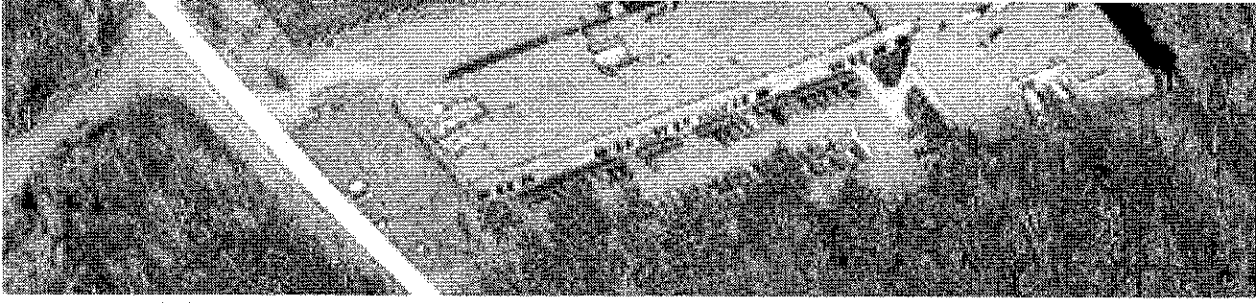
Patrick Carey – Carey and Giampa, LLC, Realtors

| | |
|---------|-----------|
| Price: | \$589,000 |
| Size: | 1,736 SF |
| Zoning: | See Agent |

Office

Mixed Use





Carlisle Park Industrial Unit D

280 Heritage Avenue, Portsmouth, NH 03801

Probably the highest quality industrial building on the NH Seacoast with a minimal total of 10 units in the building. Each unit shares in a ...

David Lefebvre – Berkshire Hathaway Verani Realty-Portsmouth

| | |
|----------|--------------|
| Price: | \$267,500 |
| Size: | 2,550 SF |
| Zoning: | INDUSTRIAL |
| Ceiling: | 22 ft. Clear |
| Loading: | 1 Dock |

Industrial

Flex Space, Industrial-Business Park





233 Vaughan

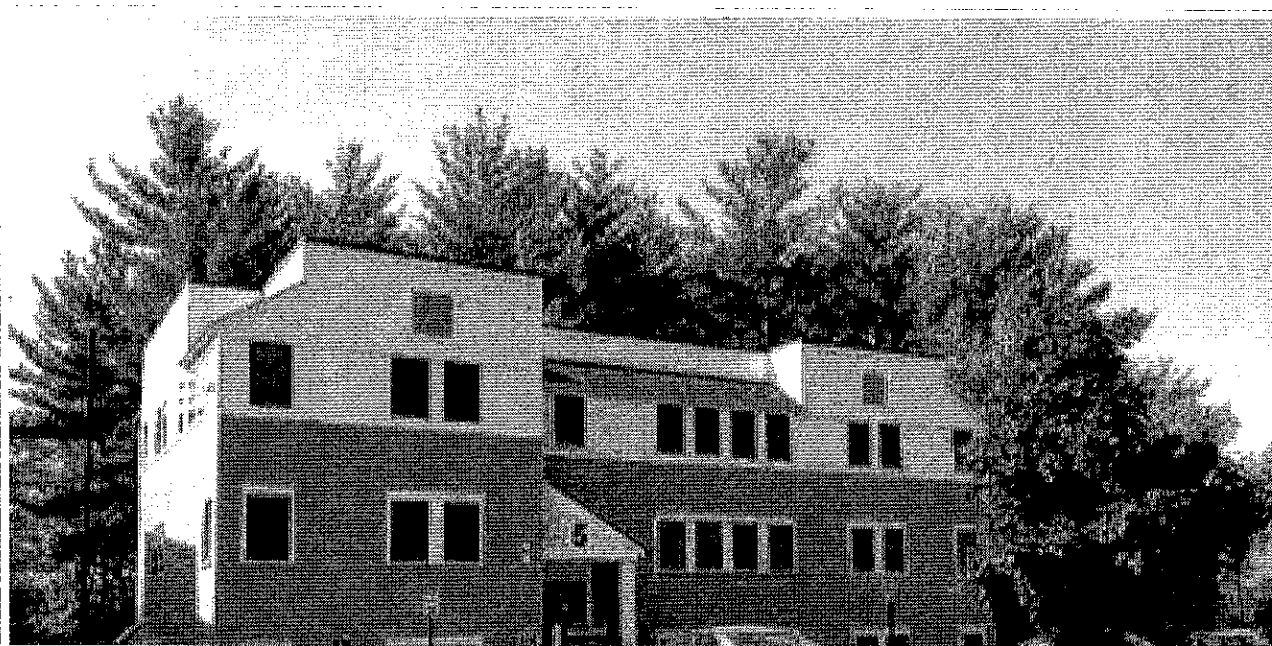
233 Vaughan St, Portsmouth, NH 03801

A perfect location for a destination retail or office. Up to three units on the first level, the selective buyer enjoys the location and presence ...

David Lefebvre – Berkshire Hathaway Verani Realty-Portsmouth

| | |
|------------|------------|
| Price: | \$325 PSF |
| Size: | 1,155 SF |
| Land Size: | 0.45 Acres |
| Zoning: | CBA |

Retail-Commercial
Mixed Use





Greenleaf Woods Building 5 Unit 302

5 Greenleaf Woods Dr, Portsmouth, NH 03801

Recently renovated Greenleaf Woods, with beautifully appointed office (see floorplan). View of Marsh, windows in every office, small kitchenette, ...

David Lefebvre – Berkshire Hathaway Verani Realty-Portsmouth

| | |
|----------|-----------|
| Price: | \$135,000 |
| Size: | 1,418 SF |
| Zoning: | GB |
| Ceiling: | 7.5 ft. |

Office

Office Building





Greenleaf Woods Condominium

4 Greenleaf Woods Dr #101, Portsmouth, NH 03801

Probably the best, nicest, office buildout in Greenleaf Woods. An office of which to be proud! A popular office destination in Portsmouth, ...

David Lefebvre – Berkshire Hathaway Verani Realty-Portsmouth

| | |
|-----------|-----------|
| Price: | \$150,000 |
| Cap Rate: | 11.50% |
| Size: | 1,418 SF |
| Zoning: | GB |

Office
Office Building



Greenleaf Woods Condominium

4 Greenleaf Woods Dr #301, Portsmouth, NH 03801

Probably the best, nicest, office buildout in Greenleaf Woods. An office of which to be proud! A popular office destination in Portsmouth, ...

David Lefebvre – Berkshire Hathaway Verani Realty-Portsmouth

| | |
|-----------|-----------|
| Price: | \$150,000 |
| Cap Rate: | 11.50% |
| Size: | 1,418 SF |
| Zoning: | GB |

Office

Office Building





Portsmouth Redevelopment site

203 Maplewood Ave, Portsmouth, NH 03801

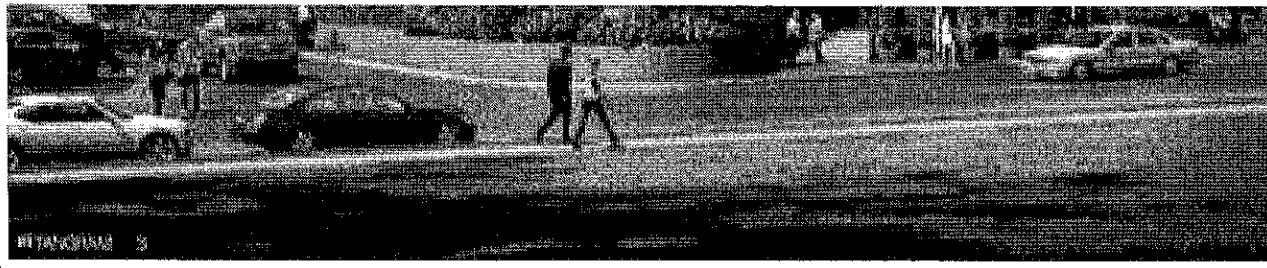
A +/- 6,500 SF parcel in the Central Business District "A", with a myriad of potential commercial and residential uses for redevelopment. See ...

David Lefebvre – Berkshire Hathaway Verani Realty-Portsmouth

| | |
|------------|------------|
| Price: | \$600,000 |
| Land Size: | 0.15 Acres |
| Zoning: | CBA |

Vacant Land
Multi-Family, Office





233 Vaughan Street

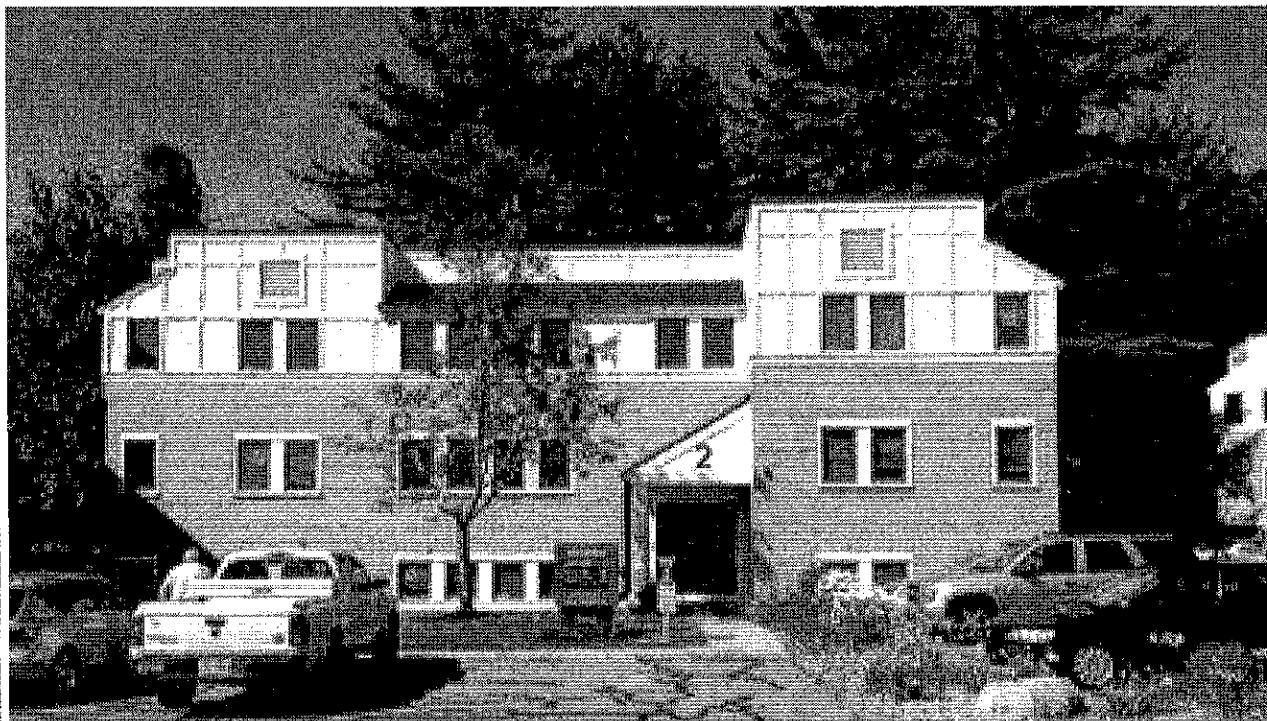
233 Vaughan Street, Portsmouth, NH 03801

Long awaited, this impressive building has potential LEED certification, geothermal heating/cooling, rooftop terrace gardens and swimming pool, ...

David Lefebvre – Berkshire Hathaway Verani Realty-Portsmouth

| | |
|------------|------------|
| Price: | \$325 PSF |
| Size: | 6,693 SF |
| Land Size: | 0.45 Acres |
| Zoning: | CBA |
| Ceiling: | 10 ft. |

Retail-Commercial
Mixed Use, Street Retail





Greenleaf Woods 2/201

2 Greenleaf Woods Dr , Portsmouth, NH 03801

This unit is owned by the Greenleaf Woods Condominium Association and is ready for purchase. At this time there are a couple of tenants in the unit ...

David Lefebvre – Berkshire Hathaway Verani Realty-Portsmouth

Price: \$139,000

Size: 1,418 SF

Zoning: GB

Office

Office Building





21,872 +/- SF Warehouse for Sale or Lease

105 Bartlett Street, Portsmouth, NH 03801

This 21,872 +/- SF industrial building was most recently used for food processing. Its features include two coolers (1,088 +/- SF & 1,292 +/- SF), ...

Kent White – CBRE | Portsmouth

| | |
|----------|-----------------------|
| Price: | \$995,000 |
| Size: | 21,872 SF |
| Zoning: | See Agent |
| Ceiling: | 20 ft. / 16 ft. Clear |

Industrial

Cold Storage, Food Processing