

Bump out at Leavitt Avenue intersection



Add ENTERING RESIDENTIAL AREA sign here.

PEVERLY HILL RD

LEAVITT AVE



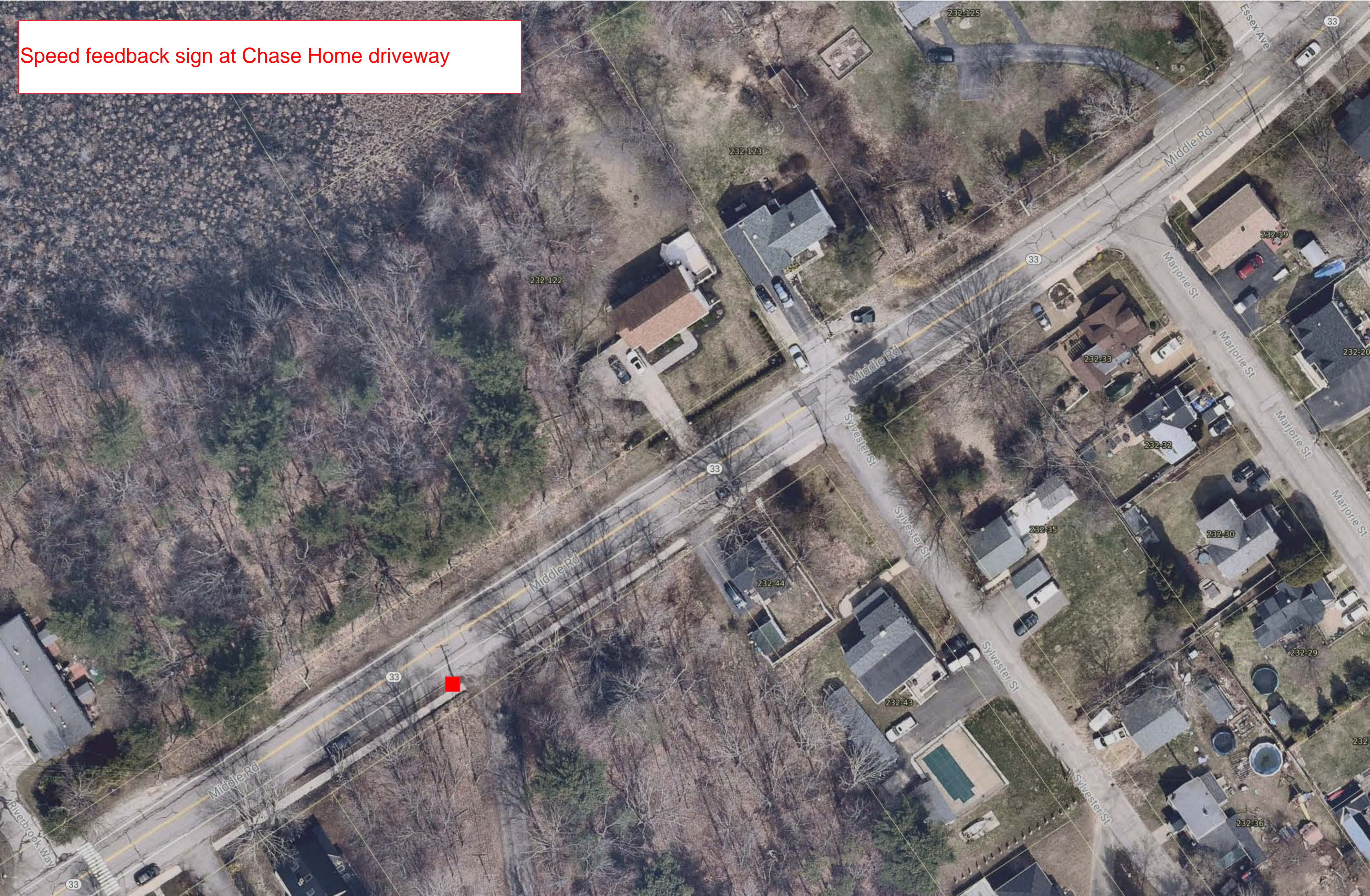
Possible pedestrian flags

ENTERING RESIDENTIAL AREA sign moved to Leavitt Avenue

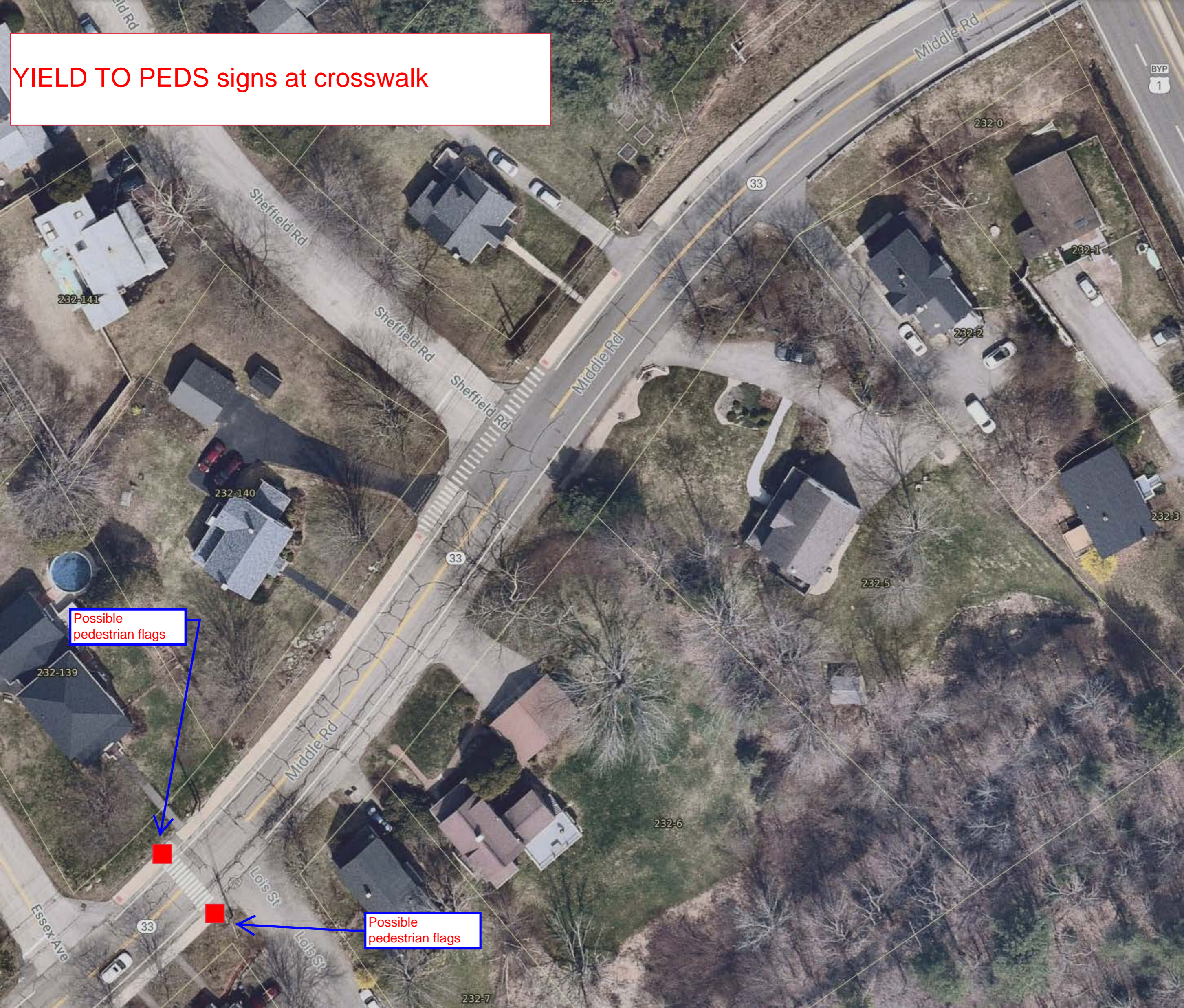
Possible pedestrian flags

Gateway bump outs

Speed feedback sign at Chase Home driveway



YIELD TO PEDS signs at crosswalk



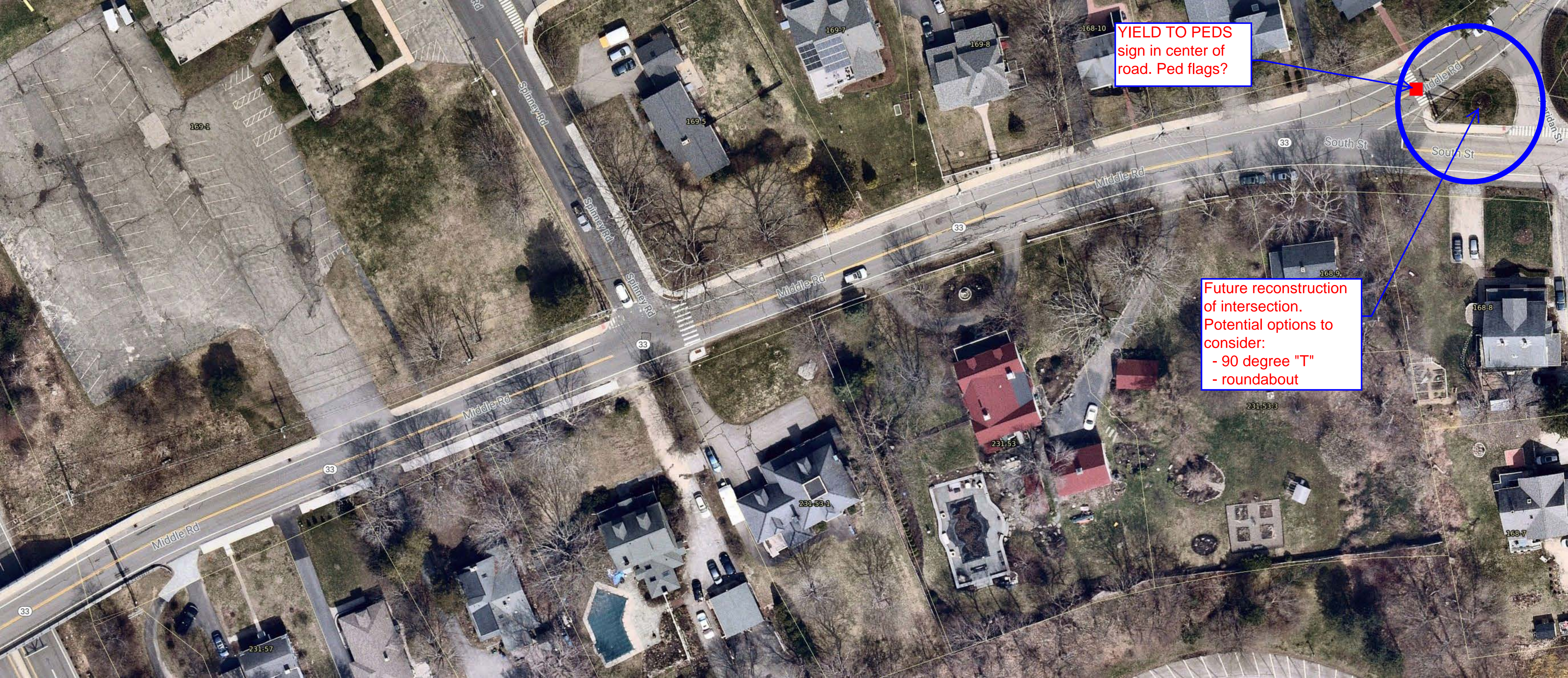
Possible pedestrian flags

Possible pedestrian flags

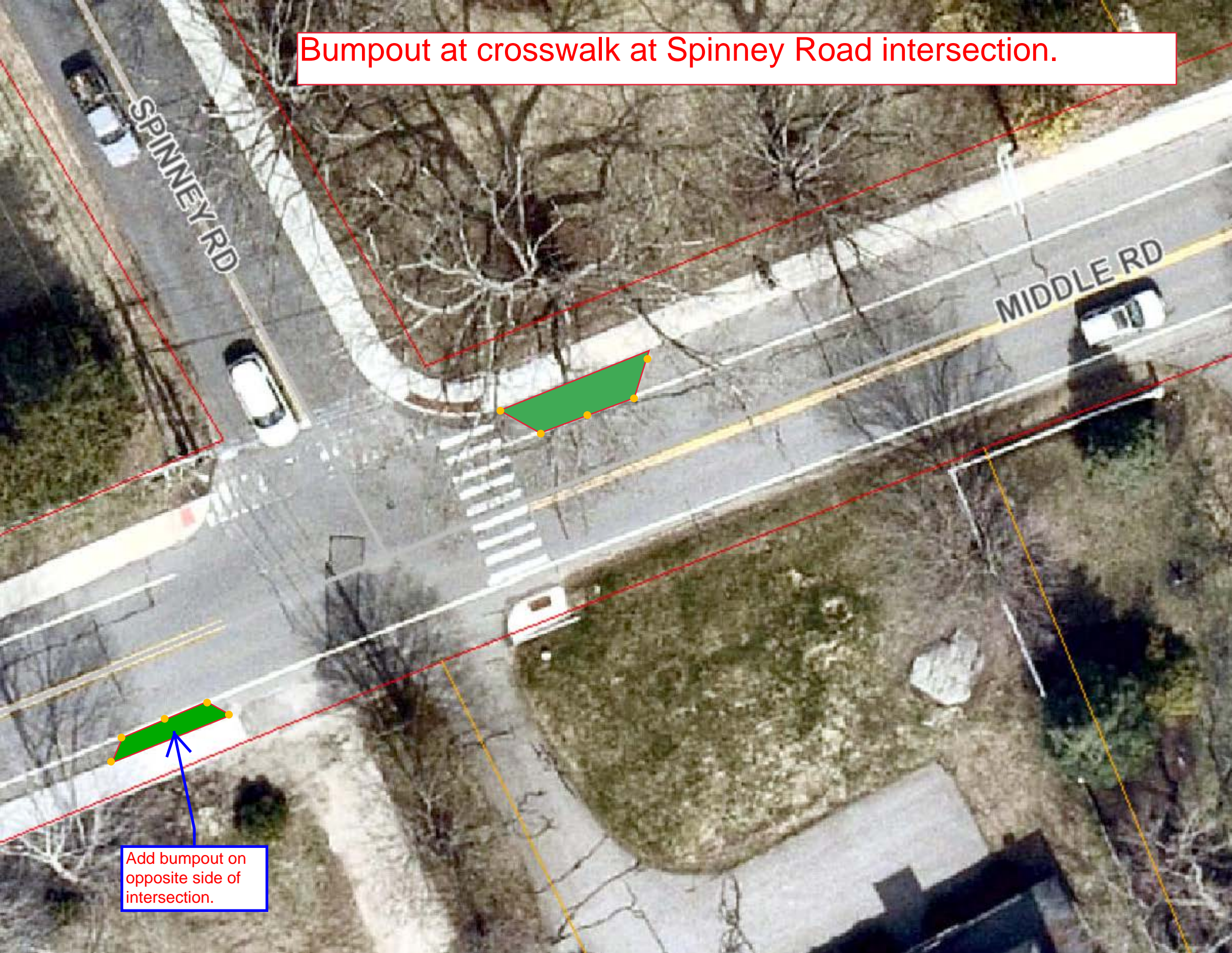
YIELD TO PEDS
sign in center of
road. Ped flags?



Future reconstruction
of intersection.
Potential options to
consider:
- 90 degree "T"
- roundabout

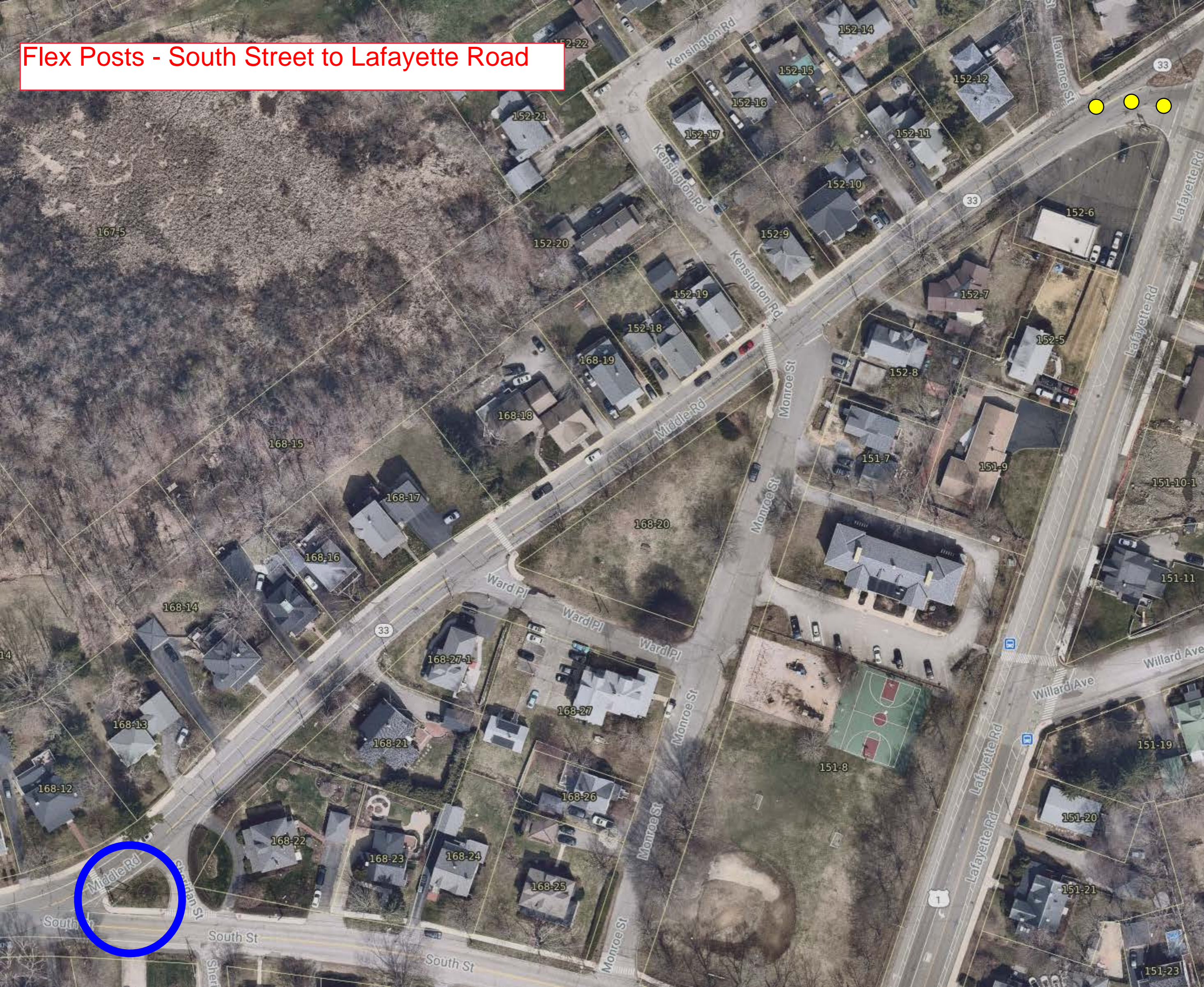


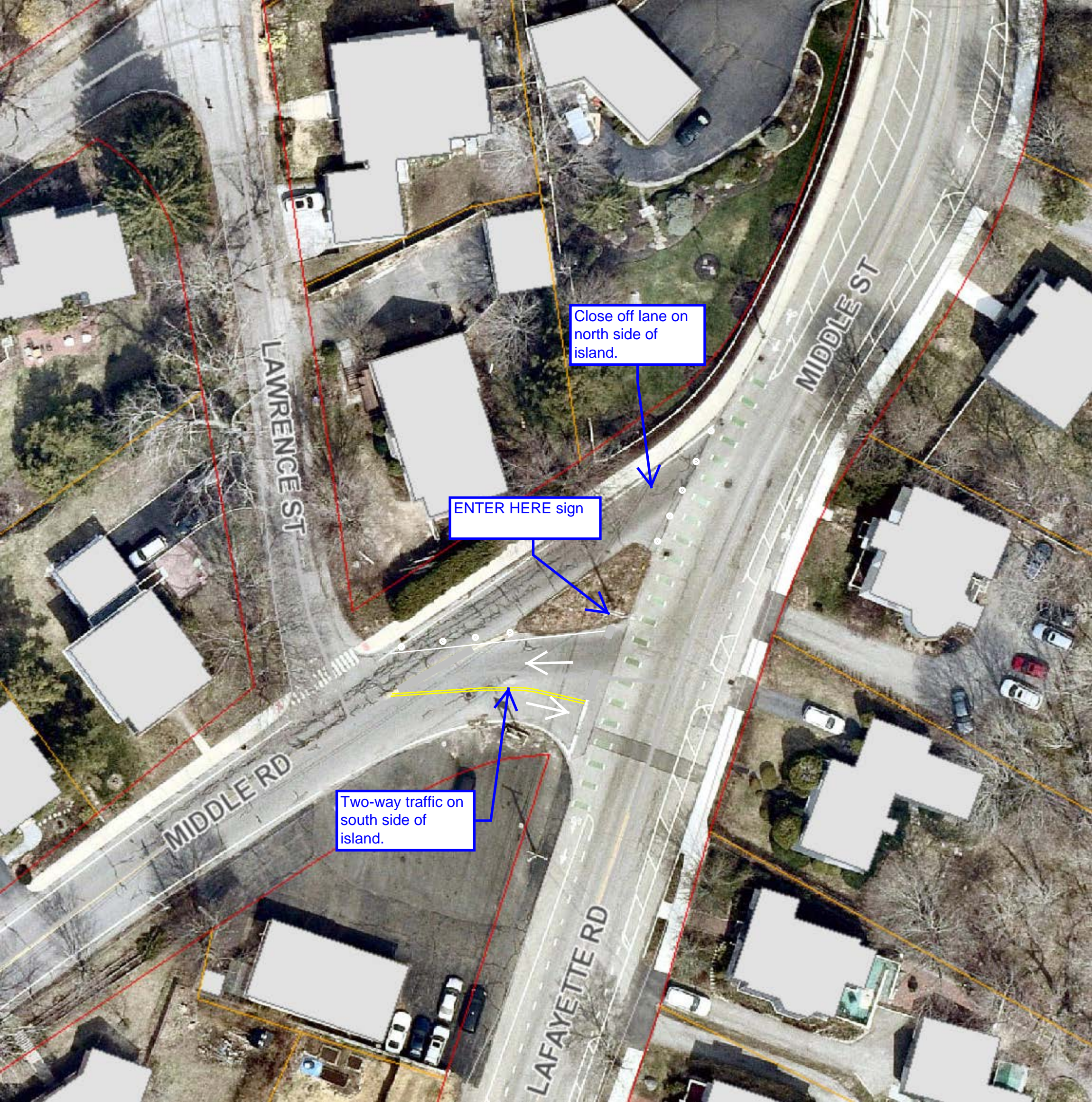
Bumpout at crosswalk at Spinney Road intersection.



Add bumpout on opposite side of intersection.

Flex Posts - South Street to Lafayette Road





Close off lane on north side of island.

ENTER HERE sign

Two-way traffic on south side of island.

LAWRENCE ST

MIDDLE RD

LAFAYETTE RD

MIDDLE ST