



# FORMER PEASE AIR FORCE BASE PFAS REMEDIAL INVESTIGATION

## COMMUNITY FACT SHEET

Join us on May 19, 2021 for a live Question & Answer session. See Page 2 for sign up information

## INVESTIGATION SUMMARY

In 2020, the Air Force engaged Wood PLC to conduct a Remedial Investigation at the former Pease Air Force Base and the surrounding area to define the nature and extent of per- and poly-fluoroalkyl substances (PFAS) and evaluate potential exposure pathways to protect human health and the environment.

The Remedial Investigation includes a sampling program that has been developed from

a review of historical environmental reports, PFAS sampling results collected since 2013, and the results of data gathering efforts within the community. Collection of more than 600 groundwater, surface water, soil, sediment, and storm water, samples is planned as part of this program.

This fact sheet describes the sampling process, and where you are likely to see the Project Team collecting samples.

## WHAT IS HAPPENING NOW

Planning activities have now been completed for the current phase of work and sampling will begin in May 2021.

### What Will You See?

**Collecting samples:** You may see members of our team collecting samples from streams, drains, soils and sediment in small bottles. Collection of approximately 40 surface water, seep and sediment samples, and 90 storm water samples are planned. Approximately 400 soil samples are planned, either from the soil surface or by drilling.

### Drilling and installing

**monitoring wells:** You may see members of our team at a number of locations working with a drill rig, installing monitoring wells. Collection of approximately 80 groundwater samples are planned.



A mobile drilling rig will be used to install monitoring wells.

## WHERE ARE THE SAMPLING SITES?

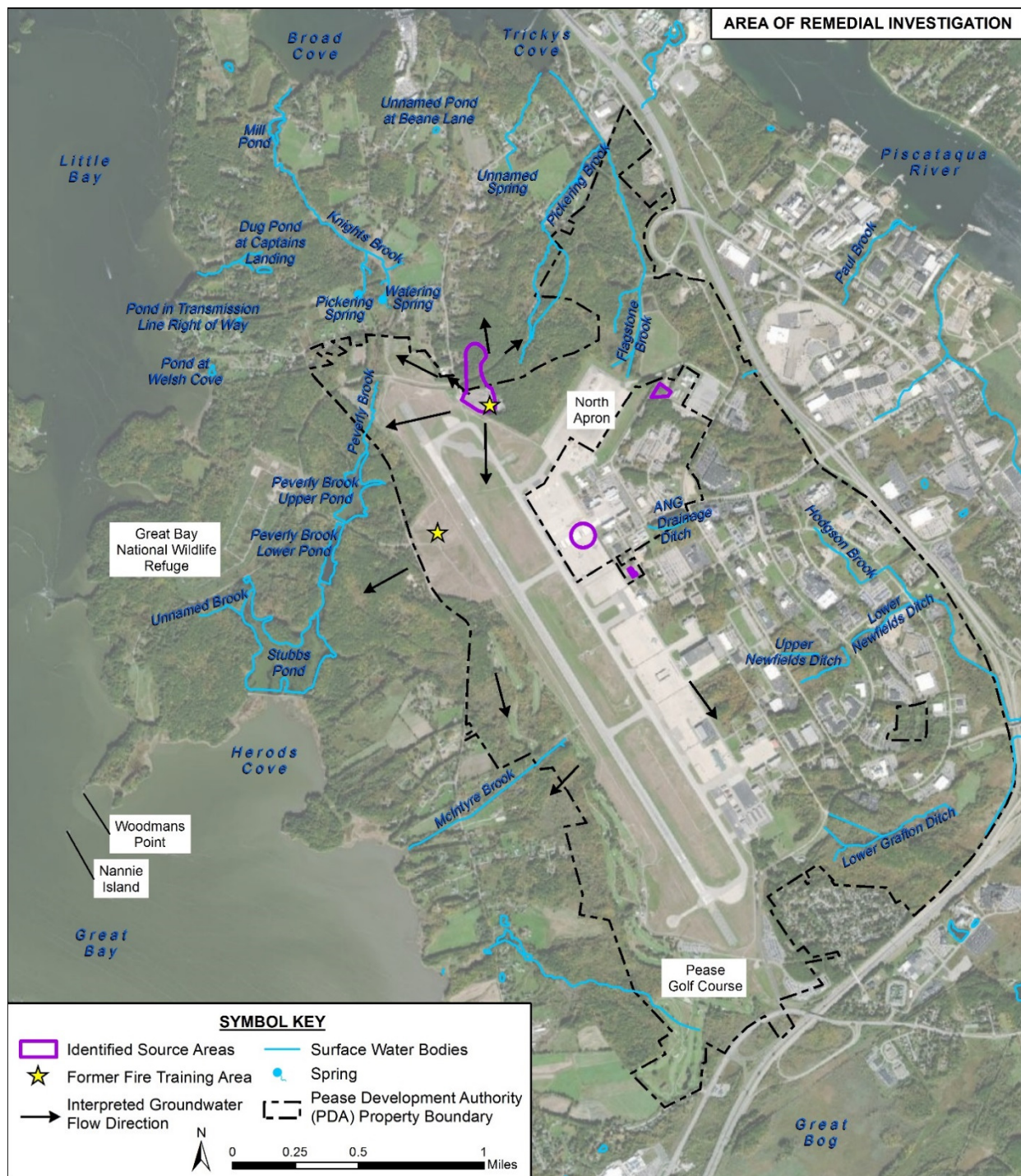
The map on the next page identifies the Pease Development Authority boundary, the surrounding area, and the main waterbodies. Samples will be collected at various locations throughout this area including Pickering Brook, Knights Brook, and Flagstone Brook.

## WHEN WILL THE SAMPLING OCCUR?

Field work will occur through fall 2021, with additional work in spring 2022 as needed. Activities will be limited to business hours (8am to 6pm) where possible and timing will depend on weather and approvals with land owners.

**For your safety, stay clear of work areas.**

April 22, 2021



## WHAT'S NEXT?

All sampling results will be shared with regulators and used to inform the next steps of the investigation. Planned completion of the Remedial Investigation is fall 2022. Progress reports will be provided at Pease Restoration Advisory Board meetings and the final Remedial Investigation report will become part of the public record for Pease.

If you have any questions about the Remedial Investigation please contact the Wood PLC project team at 978 614 0329 or e-mail us at [Pease.RI@woodplc.com](mailto:Pease.RI@woodplc.com). Please visit the BRAC Pease website to register for the upcoming Question & Answer session on May 19, 2021: <https://www.afcec.af.mil/Home/BRAC/Pease/> Pre-registration is required and submitting questions in advance is recommended.